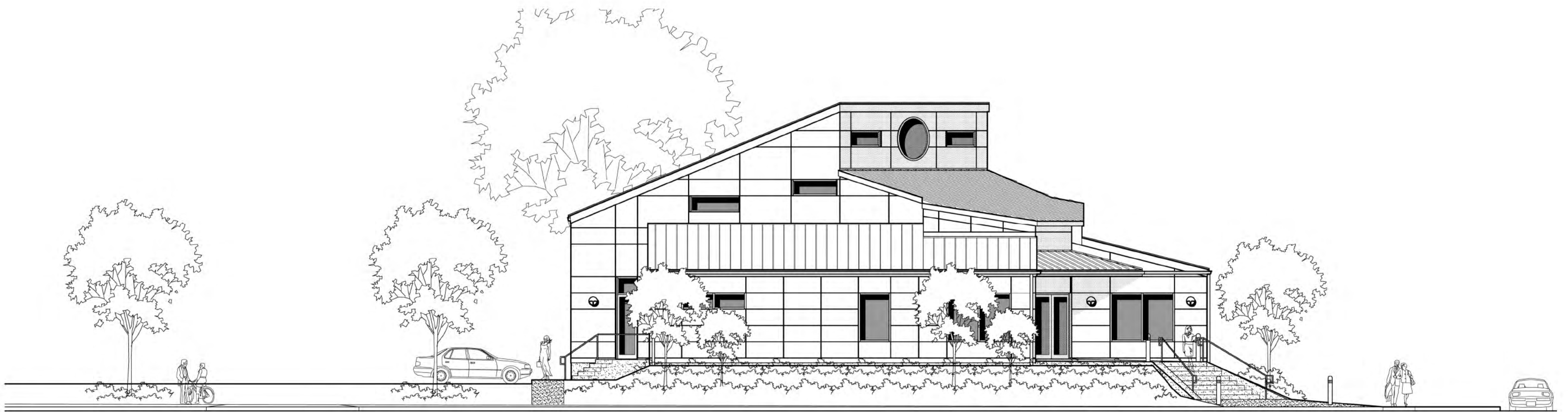


A NEW BUILDING FOR THE
Community Church Unitarian Universalist
 NEW ORLEANS, LA



Brian Gille
 ARCHITECTS



The Community Church Unitarian Universalist features a contemporary aesthetic on both the interior and exterior, reflecting the contemporary principles upheld by the congregation. The building uses large windows to allow for natural light, energy-efficient lighting and mechanical systems, and spray-foam insulation to reduce energy consumption and operating costs.

Building Type: House of Worship
 Total SF: 4,221 SF
 Energy Cost/SF: \$0.67/SF
 Site Energy Use Intensity: 24 kBtu/sf/yr
 Source Energy Use Intensity: 80 kBtu/sf/yr
 Total Annual Site Energy Use: 50,624 kBtu/yr
 Total Annual Source Energy Use: 169,083 kBtu/yr
 Energy Star Rating: 80



1. Lobby
2. Fellowship Hall
3. Sanctuary
4. Crying Room
5. Office/Library
6. Minister's Office
7. Storage
8. Men's Restroom
9. Women's Restroom
10. Mechanical
11. Existing Structure