

handout 1/25

NOAA / National Marine Fisheries Service
Overview of Issues Related to the Alaska Marine Ecosystem Forum
January 25, 2010

- **American Recovery and Reinvestment Act Funding** – NOAA Fisheries received approximately \$167M nationwide in 2009 for shovel-ready habitat restoration projects that create jobs. Over 800 proposals were submitted for over \$3B worth of projects. Four Alaska projects were funded: Eyak Lake restoration in Cordova, Daves Creek fish passage improvements on the Kenai peninsula, breaching a causeway to restore estuarine hydrology in Klawock, and marine debris removal at 16 locations throughout rural coastal Alaska including removal of a large derelict vessel in a fur seal rookery on St. Paul Island.
- **Arctic Fishery Management Plan** – NOAA Fisheries assisted North Pacific Fishery Management Council staff with the development of a new Fishery Management Plan for the Chukchi and Beaufort Seas under the Magnuson-Stevens Fishery Conservation and Management Act. The Council voted to adopt the new plan in February 2009. The Secretary of Commerce approved the plan in August 2009 and NOAA Fisheries developed implementing regulations which took effect in December 2009. Federal waters of the Arctic are now closed to all commercial fishing except for traditional fisheries until sufficient information is available to support sustainable harvests.
- **Ice Seals** – On October 15, 2009, NOAA Fisheries determined that listing spotted seals under the Endangered Species Act (ESA) is not warranted for the two populations in and near Alaska, and that a third smaller population of 3,300 seals off China and Russia should be listed as threatened. Climate change may alter all three populations' habitats, but the two northern populations exceed 200,000 individuals which have many offspring and have a broad distribution, diminishing their need for protection under the ESA. The southern population is smaller and more vulnerable to a decline in sea ice. Importation of these animals or their parts into the U.S. would be regulated under the ESA. NOAA Fisheries previously determined that ribbon seals should not be listed under the ESA. Status reviews for ringed and bearded seals are underway and NOAA Fisheries will publish listing determinations for them this fall.
- **Cook Inlet Beluga Whales** – NOAA Fisheries listed Cook Inlet beluga whales as endangered effective December 22, 2008. We published a proposed Critical Habitat designation on December 2, 2009, and will hold public hearings in Soldotna, Homer, Wasilla and Anchorage in early February 2010. Comments on the Critical Habitat designation are due by March 3, 2010, and we expect to publish a final designation this fall.
- **NOAA Action Plan for the Arctic** – NOAA is developing a strategic plan to articulate the agency's role and priorities for the Arctic. The plan will build upon a preliminary draft that was developed in 2009. The plan will identify critical near term activities, longer term investment priorities to address operational needs, interaction with partner agencies, and funding requirements. The team developing the plan is being led by Doug DeMaster, director of the Alaska Fisheries Science Center, and Laura Furgione, Assistant Administrator for Program Planning and Integration. An internal draft is due by April 30, 2010.



Briefing for the Alaska Marine Ecosystem Forum

January 25, 2010

Essential Fish Habitat Review

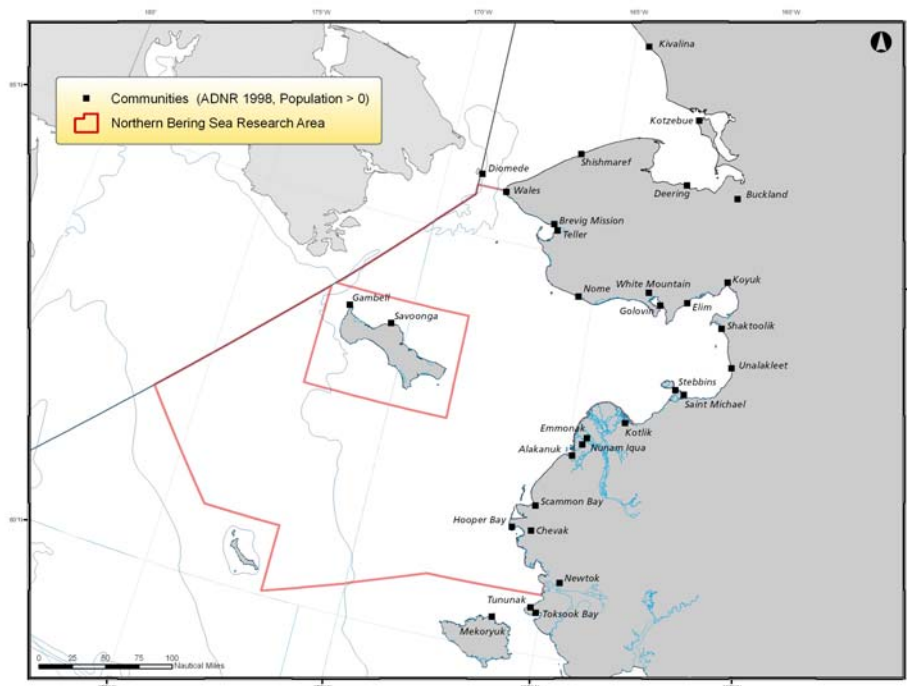
NMFS and the Council are undertaking a five-year review of the specification of essential fish habitat distribution for each of the fish stocks managed under the Council’s Fishery Management Plans. The review will be completed in April 2010, and may result in minor changes to the description and distribution of essential fish habitat (EFH) for managed species.

The review will also reevaluate non-fishing impacts on essential fish habitat; federal agencies are required to consult with NMFS before engaging in marine activities within areas identified as EFH. New conservation and enhancement recommendations for non-fishing threats to EFH have been identified as part of the review, and will likely be adopted by the Council following public review.

Northern Bering Sea Research Plan

The Council and the NOAA Alaska Fisheries Science Center (AFSC) are working on developing a research plan for the northern Bering Sea which would investigate the effects of bottom trawling on benthic habitat. The AFSC and the Council are trying to collect available ecological baseline data for this area. The plan and subsequent management measures would first identify protection areas for crab, marine mammals, ESA-listed species (such as the spectacled eider), and subsistence needs.

The AFSC is hosting a community and subsistence workshop to gather information on subsistence use of the area, in Anchorage on February 24-25, 2010.





Steller sea lions

The Council is expecting NMFS to issue a draft Biological Opinion on fishery interactions with Steller sea lions (SSLs) in March 2010. The SSL population in portions of the Aleutian Islands continues to decline. Depending on the conclusions of the BiOp, the Council will likely examine alternative proposals for changing SSL protection measures, which currently restrict groundfish fishing, especially for SSL prey species (pollock, Pacific cod, and Atka mackerel). It is possible that changes to the management of Aleutian Islands groundfish fishing may result from this process.

Chum salmon bycatch in the Bering Sea pollock fisheries

The Council is evaluating alternatives to limit the bycatch of chum salmon in the Bering Sea pollock trawl fishery. The management options include time/area closures and transferable bycatch limits for the annual reduction of chum salmon bycatch in the pollock fishery. The analysis is structured similarly to the recent Council action on Chinook salmon bycatch in the same fishery, where the Council instituted a hard cap that will close the pollock fishery for the rest of the year once Chinook salmon bycatch reaches a certain level. Under the current schedule, the Council will be taking final action on chum salmon in fall 2011.

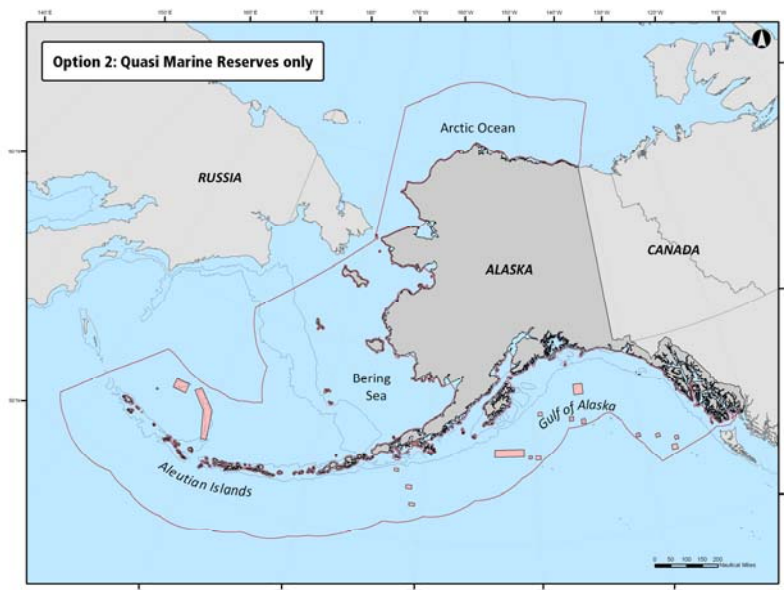
Comments on Coastal and Marine Spatial Planning framework

The eight regional fishery management councils intend to submit comments on the newly-released Coastal and Marine Spatial Planning framework.

National Marine Protected Area framework

NMFS has formally contacted the Council with a partial list of the Council's fishery closures, in order to begin the consultation process as to whether and which of the closures may appropriately be entered on the national MPA registry. In December 2009, the Council considered the proposed list, and also a revised list of closures based on different criteria (e.g., eligible closures that are quasi-marine reserves), and will review this issue again once NOAA provides anticipated guidance on the agency's interpretation of the requirement to 'avoid harm to the extent practicable'.

The Council also requested a discussion paper from staff evaluating what are the Council's obligations for the 'avoid harm' provision with respect to other agencies' listed MPAs (there are currently four in Alaska, all identified by agencies of the Department of Interior). Further discussion is scheduled for June 2010.



Minerals Management Service - Alaska Region - Environmental StudiesESS Home page: <http://www.mms.gov/alaska/ess/index.htm>

Program Lead	Region	Topic Code	NSL #	Start FY	TITLE
PLANNED STUDIES (FY-2010)					
MMS	CH / BS	PO	NT-08-02	10	U.S. Arctic Coupled Ice-ocean Modeling
MMS / NMML	CH / BS	MM	09-02	09	COMIDA: Passive Acoustic Detection and Monitoring of Endangered Whales in the Arctic (Award Pending)
MMS / PMEL	CH / BS	PO	09-02	09	COMIDA: Ecosystem Observations in the Chukchi Sea: Biophysical Moorings and Climate Modeling (Award Pending)
MMS / NMML/ Canada DFO	CH / BS	MM	10-01	10	Bowhead Whale Feeding Variability in the Western Alaskan Beaufort Sea: Satellite Tracking of Bowhead Whales (Extension)
MMS / NMML	CH / BS	MM	10-02	10	Bowhead Whale Feeding Variability in the Western Alaskan Beaufort Sea: Oceanography and Feeding (Extension)
MMS	AK	IM	10-04	10	Management, Logistics, and Warehouse Storage of Oceanographic Equipment
MMS	CH	MM	10-05	10	COMIDA: Distribution and Relative Abundance of Marine Mammals: Aerial Surveys (Extension)
MMS / NMFS	BS	HE	10-06	10	Beaufort Sea Marine Fish Monitoring Survey in the Central Beaufort Sea
MMS	AK	PO	10-07	10	Evaluation of the Use of Hindcast Model Data for OSRA in a Period of Rapidly Changing Conditions (Workshop)
MMS / NMFS / AEB		HE	10-08	10	North Aleutian Basin Monitoring in Drilling Area (NABMIDA): Nearshore Benthic Biota Habitat Baseline & Community Based Long-Term Monitoring
MMS	CH / BS	HE	10-09	10	Joint Funding Opportunities in Existing Marine Fish Studies
MMS / FWS		HE	10-10	10	Seabird Distribution and Abundance in the Offshore Environment
MMS		SS	10-11	10	North Aleutian Basin Socio-economic Indicators
MMS / TBD		MM	10-12	10	Seasonal Habitat Use by Endangered Steller Sea Lions of the North Aleutian Basin Sale Area
MMS / TBD		MM	10-13	10	Occurrence and Distribution of Endangered Humpback and Fin Whales in the NAB Area
MMS	AK	IM	10-14	10	Alaska State-Wide Oceans Research and Studies Project Browser Covering the Alaska Offshore and Coastal Areas
*Note: The procurement of any study is contingent upon availability of funding					
ONGOING STUDIES					
Physical Oceanography					
MMS/NOPP	AK	PO	NOPP	07	Comprehensive Modeling Approach Towards Understanding and Prediction of the Alaskan Coastal System Response to Changes in an Ice Diminished Arctic
MMS	BS	PO	06-03	06	Feasibility and Study Design for Boundary Oceanography of the Beaufort Sea
MMS / CMI	BS	PO	93-48-65	06	Idealized Process Model Studies of Circulation in the Landfast Ice Zone of the Alaskan Beaufort Sea.
MMS/UAF	BS	PO	06-x13	06	Support of the Collection of Meteorological Data on the North Slope and Beaufort Sea, Alaska
MMS/NOPP	BS	PO	NOPP	07	Circulation, Cross-Sheff Exchange, Sea Ice, & Marine Mammal Habitats on the AK Beaufort Sea Shelf
MMS / NOPP	BS + other	PO	04-08	04	Surface Circulation Radar Mapping in Alaskan Coastal Waters: Field Study Beaufort Sea and Cook Inlet
MMS/CMI	CH	PO	09-04	09	Mapping and Characterization of Recurring Polynyas and Landfast Ice in the Chukchi Sea
MMS/CMI	CH	PO	09-06	09	Surface Current Circulation High Frequency (HF) Radar Mapping in the Chukchi Sea
MMS	CH / BS	PO	06-05	06	Beaufort/Chukchi Seas Mesoscale Meteorology Modeling Study Phase II
MMS		PO	07-x14	07	Modeling of Circulation in the North Aleutian Basin
Fates & Effects					
MMS / CMI	BS	FE	93-48-61	05	Assessment of the Direction and Rate of Alongshore Transport of Sand and Gravel In Petroleum Development Region of the North Slope of Alaska
MMS / CMI	BS	FE	93-48-64	06	Synthesis of Time Interval changes in Trace Metals & Hydrocarbons in Nearshore Sediments of the AK Beaufort Sea: A Statistical Analysis
MMS/NOPP	BS	FE	NOPP	07	Toward a Predictive Model of Arctic Coastal Retreat in a Warming Climate, Beaufort Sea, Alaska
MMS	CH	FE	08-03	08	COMIDA: Chemistry and Benthos (CAB)
MMS	CH / BS	FE	05-x12	05	Updates to the Fault Tree Approach to Oil Spill Occurrence Estimators for the Beaufort and Chukchi Sea
Habitat and Ecology					
MMS		HE	08-07	09	Juvenile and Maturing Salmon Use of the North Aleutian Basin Lease Area
MMS/NOAA		HE	08-08	09	Spatial and Temporal Mapping of Nearshore Juvenile Fish & Settling Crab in the North Aleutian Basin
MMS/BRD	BS	HE	n/a	06	Testing Molecular & Otolith Tools to Investigate Population-of-Origin & Mitigation in Arctic Cisco Found in Colville River, Alaska
MMS / CMI	BS	HE	08-12-02	08	Recovery in a High Arctic Kelp Community
MMS / NMFS	BS	HE	06-04	07	Beaufort Sea Marine Fish Monitoring: Pilot Survey and Test of Hypotheses
MMS / CMI	BS	HE	93-48-60	04	Evaluating a Potential Relict Arctic Invertebrate and Algal Community on the West Side of Cook Inlet
MMS / CMI	CH	HE	93-48-67	07	Current & Historic Distribution & Ecology of Demersal Fishes in the Chukchi Sea Planning Area
MMS / CMI	CH	HE	08-12-05	09	Trophic Links: Forage Fish, Their Prey, and Ice Seals in the Northeast Chukchi Sea
MMS/BRD	CH / BS	HE	07-05	09	Arctic Fish Ecology Catalogue
MMS/NOPP	CH / BS	HE	NOPP	07	Upwelling of Zooplankton within a Bowhead Whale Feeding Area Near Barrow, AK
MMS / CMI	CH / BS	HE	08-12-06	09	Population Connectivity and Larval Dispersal in Bering, Chukchi, & Beaufort Sea Snow Crab Populations: Estimating Spatial Scales of Disturbance Impacts
MMS / CMI		HE	08-12-03	08	Biogeochemical Assessment of the North Aleutian Basin Ecosystem: Current Status & Vulnerability to Climate Change
Marine Mammals and Protected Species					
MMS/BRD	CH / BS	MM	09-05	09	Demography and Behavior of Polar Bears Summering on Shore in Alaska
MMS / CMI	BS	MM	93-48-56	04	Premigratory Movements and Physiology of Shorebirds Staging on Beaufort Littoral Zone

Program Lead	Region	Topic Code	NSL #	Start FY	TITLE
MMS / Canada	BS + other	MM	05-05	05	Assessing Reproduction and Body Condition of the Ringed Seal Near Sachs Harbour, Northwest Territory, Canada, through a Harvest-based Sampling Program
MMS	CH	MM	08-02	08	COMIDA: Distribution and Relative Abundance of Marine Mammals: Aerial Survey
MMS / BRD	CH	MM	07-04a	07	Monitoring Marine Birds of Concern in the Eastern Chukchi Nearshore Area (Loons)
MMS / NMML	CH	MM	07-08	07	Pinniped Movements and Foraging: Bearded Seals
MMS/TBD	CH	MM	09-01	09	Pinniped Movements and Foraging: Walrus Habitat Use in the Potential Drilling Area (Chukchi)
MMS / NMML/ Canada DFO	CH / BS	MM	06-01	05	Bowhead Feeding Variability in the Western AK Beaufort Sea: Satellite Tracking of Bowhead Whales
MMS / NMML	CH / BS	MM	06-01	05	Bowhead Feeding Variability in the Western AK Beaufort Sea: Oceanography and Feeding
MMS / NMML	CH / BS	MM	07-01	07	Monitoring the Distribution of Arctic Whales
MMS/ Canada	CH / BS	MM	05-02	05	Population and Sources of Recruitment in Polar Bears
MMS/BRD	CH / BS	MM	09-03	09	Migration and Habitat Use by Threatened Spectacled Eiders in the Eastern Chukchi Near and Offshore Environment (BRD)
MMS / NMML		MM	07-x13	07	Distribution, Abundance, and Habitat Use of North Pacific Right Whales
MMS / NMML	Cook Inlet	MM	03-10	03	Distribution and Abundance of Harbor Seals in Cook Inlet
MMS / NMML	Cook Inlet	MM	04-07	04	Movements and Habitat Use of Harbor Seals in Cook Inlet
Social Systems					
MMS	AK	SS	08-10	09	Testing, Improvement, and New Alaska Data for MAG-PLAN
MMS/NSSI	BS	SS	08-09	09	Aggregate Effects Research & Environmental Mitigation Monitoring of Oil Operations in the Vicinity of Nuiqsut
MMS	AK	SS	03-12	03	Social and Economic Assessment of Major Oil Spill Litigation Settlement for the Alaska OCS Region
MMS / NMML	BS	SS	08-01	08	Continuation of Impact Assessment for Cross Island Whaling Activities-Beaufort Sea
MMS	BS	SS	02-07	02	Subsistence Mapping of Nuiqsut, Kaktovik and Barrow: Past and Present Comparison
MMS / CMI	BS	SS	08-12-04	09	Subsistence Use and Knowledge of Beaufort Salmon Populations
MMS	CH	SS	08-04	09	COMIDA: Impact Monitoring for Offshore Subsistence Hunting
MMS / CMI	CH	SS	93-48-68	07	Traditional Knowledge Regarding Bowhead Whales in the Chukchi Sea
MMS / CESU (UAF) / NSF	CH / BS	SS	05-04a	07	Study of Sharing Networks to Assess the Vulnerabilities of Local Communities to O&G Development Impacts in Arctic Alaska
MMS		SS	08-06	08	Subsistence Study for North Aleutian Basin
Multidisciplinary					
MMS	BS	MULTI	03-14-01	03	Continuation of Arctic Nearshore Impact Monitoring in Development Area (cANIMIDA)
MMS	BS	MULTI	03-14-02	03	TO#2 - Hydrocarbons and Metal Characterization of Sediments in the cANIMIDA Study Area
MMS	BS	MULTI	03-14-05	03	TO#5 - Integrated Biomonitoring and Bioaccumulation of Contaminants in the cANIMIDA Study Area.
Information Management					
MMS / CMI	AK	IM	08-12-01	08	MMS-University of Alaska Fairbanks-State of Alaska Coastal Marine Institute Management
NPRB / MMS	AK	IM	10-03	10	Alaska Marine Science Symposium (co-sponsor)
MMS	AK	IM	07-02	07	Management, Logistics, and Warehouse Storage of Oceanographic Equipment
MMS	AK	IM	07-06	08	Conference Management and Reports on MMS Results
Other (Research Partnerships)					
					MMS Technology Assessment and Research Program (TAR)
					MMS-University of Alaska Fairbanks-State of Alaska Coastal Marine Institute (CMI)
					Cooperative Ecosystem Studies Unit (CESU); University of Alaska Fairbanks (UAF); University of Washington (UW)
					USGS/Biological Resources Division (BRD)
					National Oceanographic Partnership Program; eg. <i>Comprehensive Modeling Approach Towards Understanding and Prediction of the Alaskan Coastal System Response to Changes in an Ice Diminished Arctic</i>
					Federal Inter-agency Agreements: eg. NOAA-National Marine Fisheries Service (NMFS) / National Marine Mammal Laboratory (NMML) / US Fish and Wildlife Service (FWS) / PMEL (Pacific Marine Environmental Laboratory)
					National Science Foundation (NSF)
					North Slope Science Initiative (NSSI)
					North Pacific Research Board (NPRB)
					National Aeronautics and Space Administration (NASA)
					National Fish and Wildlife Foundation
					Alaska Ocean Observing System (AOOS)
					Aleutians East Borough (AEB)
					Alaska Department of Fish and Game (ADF&G)
					Industry Studies
					Arctic Monitoring and Assessment Programme (AMAP)
					Canadian Department of Fisheries/Oceans (DFO)

Region Codes

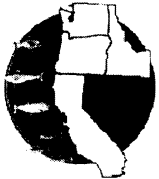
Beaufort Sea	BS
BS + Other regions	BS + other
Chukchi Sea	CH
Chukchi & Beaufort Sea	CH / BS
North Aleutian Basin	
Cook Inlet	C.I.
All	AK
Chukchi & North Aleutian Basin	



January 25, 2010



Dr. Jane Lubchenco, Administrator
National Oceanic and Atmospheric Administration
1401 Constitution Avenue, NW, Room 5128
Washington, DC 20230



Dr. Lubchenco:

{We wish to make you aware of the following comments which were submitted to the White House Council on Environmental Quality via their comment website, and respectfully request your assistance in following through on these comments as the CMSP Framework is finalized.}



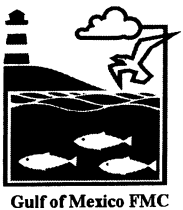
Please consider the following comments from the Council Coordination Committee (CCC), consisting of the Chairs, Vice-chairs, and Executive Directors of the eight Regional Fishery Management Councils (Councils) regarding the proposed Interim Framework for Coastal and Marine Spatial Planning (Framework). The CCC met recently with NOAA Fisheries leadership and reviewed the draft Framework prior to developing these collective comments. The Councils, created in 1976 by the Magnuson-Stevens Fishery Conservation and Management Act (Magnuson-Stevens Act), are responsible for the development and maintenance of fishery management plans (FMPs) and regulations for waters within the U.S. Exclusive Economic Zone (EEZ), subject to review and approval by the Secretary of Commerce.



The Councils, as executive agencies of the Department of Commerce and direct partners with NOAA Fisheries in the management of our Nation's fisheries resources, are responsible not only for management of fishing activities directly, but also develop plans and regulations which may indirectly affect other activities. These include establishment of spatially-based marine managed areas developed by each Council which restrict, or prohibit, fishing activities to protect habitat, reduce interactions with marine mammals or seabirds, address bycatch concerns, or address other management issues. Many of these closure areas are considered to be marine protected areas (MPAs) by the MPA Center and are being considered for inclusion in the National System of MPAs.



The CCC applauds the efforts of the Administration to develop a more comprehensive approach to coastal and marine planning, and we realize that fisheries management is only one of the many critical aspects to be considered. However, given that a substantial portion of the scientific and other information to be assembled under the draft Framework is already under the purview of the Councils and NOAA Fisheries, and given that the processes envisioned under the draft Framework are already successfully in place under the purview of the Councils and NOAA Fisheries, it is imperative to explicitly recognize these roles and include them in the draft Framework.



The Framework states that CMS plans would be developed using a regional approach by National Ocean Council (NOC) established regional planning bodies. While the draft Framework specifically recognizes Federal, State, regional governance structures, and tribal representation (including Native or indigenous communities) on the regional planning bodies, it does not specify which Federal and State agencies, nor does it even mention the Councils. The CCC discussed the need to have Federal and State fisheries management agencies at the table in the development of CMS plans, as well as each regional Council. **We strongly urge that the next iteration of the Framework, or any potential Executive Order implementing the Framework, explicitly list the Councils, NOAA Fisheries, and relevant State fisheries agencies as members and signatories of the regional planning bodies.**

A related primary concern is whether the implementation of the proposed Framework could effectively supercede the existing authorities of the Councils under the Magnuson-Stevens Act. The Framework states that “*CMSP processes would be carried out consistent with and under the authority of existing statutes...and that CMSP is not intended to supercede them....*” However, the Framework also implies, at various places, that individual ‘agencies’ would be required to work within their respective authorities to comply with the plans developed by the regional planning bodies (or justify why they are not doing so), thereby implying an indirect regulatory authority. The draft Framework also states that “*State and Federal agencies would also be expected to formally incorporate relevant components of the CMS plan into their ongoing operations or activities consistent with existing law*”. Further, in the particular case of the Councils, it is unclear of their standing relative to the term ‘agencies’. Finally, the draft Framework makes reference (page 23) to enforcement of “*CMSP related laws*”. If no regulatory authority is vested within the CMS plans, then it is unclear what is meant by this phrase. **We recommend that the Framework more explicitly clarify the relationship of the CMS plans to existing regulatory processes and authorities, and ensure it does not undermine or impair successful processes already in place.**

The CCC has previously gone on record opposing legislation which would create large, new bureaucratic processes which have the potential to undermine, or be redundant to, existing, successful regulatory processes such as that epitomized within the Magnuson-Stevens Act. The draft Framework describes a very large and ambitious process for development of the regional CMS plans, and associated data and other scientific information, which will necessarily interact with existing authorities and which will subsume enormous resources to compile. We urge that the Framework clarify these authorities, particularly as they relate to the RFMCs, and specify the resources necessary to fully develop the CMS plans as envisioned. **It appears possible that the development of the centralized CMS plans could override, or subsume, the expertise, authority, and decision making processes of individual agencies, including the Councils. We believe that the Administration should consider a more limited approach, such as developing more generalized policy guidance for CMSP rather than the detailed, centralized plans as envisioned.**

In addition to the primary concerns described above, we offer the following more specific comments:

- Regional planning bodies would consist of Federal, State, tribal, local authorities, and regional governance structures – given the potentially large number of entities involved (particularly in order to accommodate numerous tribal, Native, or indigenous communities), it will be very difficult to appoint a regional planning body of a small enough size to operate effectively. **The Framework should be more explicit about the composition of the regional planning bodies, and the process for appointing these bodies.**

- The Framework calls for the regional planning bodies to investigate, assess, forecast, and analyze an enormous body of information and data (page 15), comprising virtually every known body of scientific information potentially available. However, the Framework does not identify the resources, or lead agency, expected to compile this vast array of information. It is highly unlikely that the

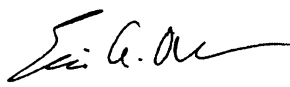
members of the regional planning bodies themselves have the wherewithal to undertake this task. There is concern on the part of the CCC that financial and human resources under NOAA Fisheries (and the Councils) will be diverted from their current mission in order to fulfill this ambitious undertaking. **We recommend that the Framework directly address the human and financial resources necessary to accomplish these tasks.**

- Following the compilation of this baseline information, the Framework calls for the preparation of a draft CMS plan *“with supporting environmental impact analysis, including alternatives...for appropriate public review and comment”*. Similar to the point above, the CCC is concerned with regard to the resources necessary to compile these analyses. The CCC also questions whether this would either implicitly or explicitly be a NEPA process, which is typically associated with a ‘federal action’. If no direct regulatory authority is associated with these plans, then is it necessary to go through a NEPA process prior to approval? **We recommend further clarification regarding the process for approval of CMS plans.**

- NOAA, and the Councils, are currently engaged in a process to identify and list Marine Protected Areas in the National MPA inventory. We believe that the Framework should clarify the relationship between this process and the CMS plans. For example, does CMSP dictate how MPAs will be designated, or do designated MPAs factor into the larger CMS plans? And, who makes that determination? **We recommend that the Framework directly address and clarify this relationship.**

We appreciate the opportunity to comment on this important initiative, and stand ready to assist in its development. However, we also recognize the enormity of the tasks outlined in the draft Framework and caution against the potential deterioration of existing ocean and fisheries management processes in order to accomplish the ambitious objectives of the Framework. **We believe that existing processes, such as the Council process under the Magnuson-Stevens Act, can be effectively leveraged to facilitate the success of this initiative, and we urge that the Framework recognize and rely upon those processes.**

Sincerely,



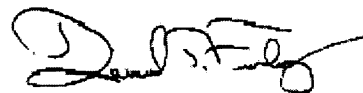
Eric A. Olson
Chair, NPFMC



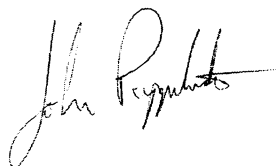
Chris Oliver
Executive Director, NPFMC



Richard B. Robbins, Jr.
Chair, MAFMC



Daniel T. Furlong
Executive Director, MAFMC



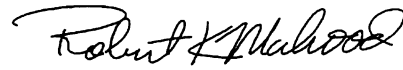
John W. Pappalardo
Chair, NEFMC



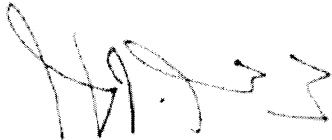
Paul J. Howard
Executive Director, NEFMC



Charles Duane Harris
Chair, SAFMC



Robert K. Mahood
Executive Director, SAFMAC



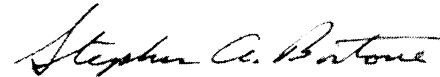
Eugenio Piñeiro-Soler
Chair, CFMC



Miguel A. Rolon
Executive Director, CFMC



Robert Shipp
Chair, GMFMC



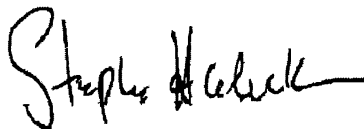
Steve Bortone
Executive Director, GMFMC



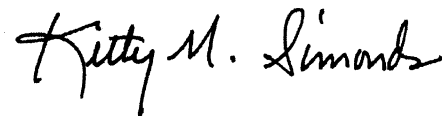
David Ortmann, Chair
Chair, PFMC



Donald McIsaac
Executive Director, PFMC



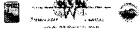
Stephen Haleck
Chair, WPFMC



Kitty M. Simonds
Executive Director, WPFMC

CC: Mr. Sam Rauch
Ms. Monica Medina

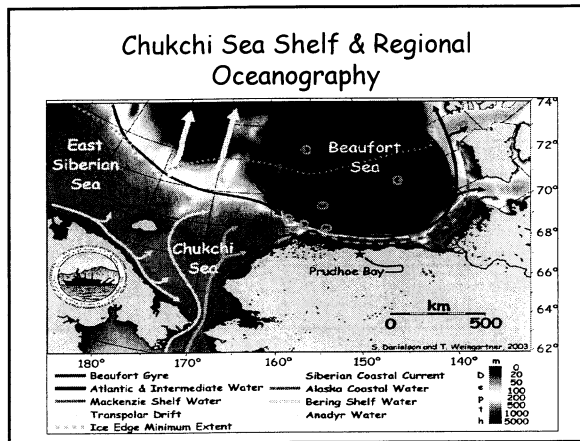
Nandart 1/25/2010
Doug Dasher

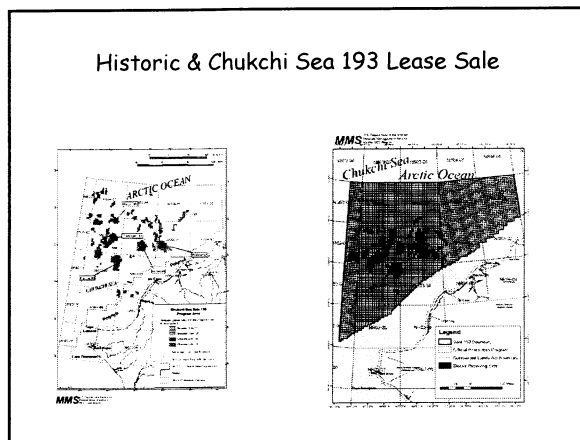


Alaska Monitoring and Assessment Program Chukchi Sea Monitoring and Assessment Phase I - 2010 - 2012

Presentation to Alaska Marine Ecosystem Forum
January 25, 2010
By Douglas Dasher, PE* & Terri Lomax
Alaska Department of Environmental Conservation
Division of Water
Alaska Monitoring and Assessment Program Lead

*Trainer for Texas PE practice 2010

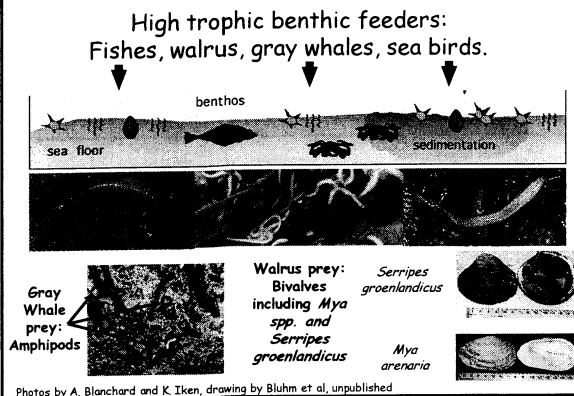




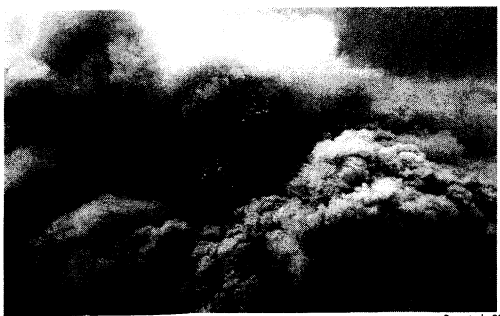
Anthropogenic Effects

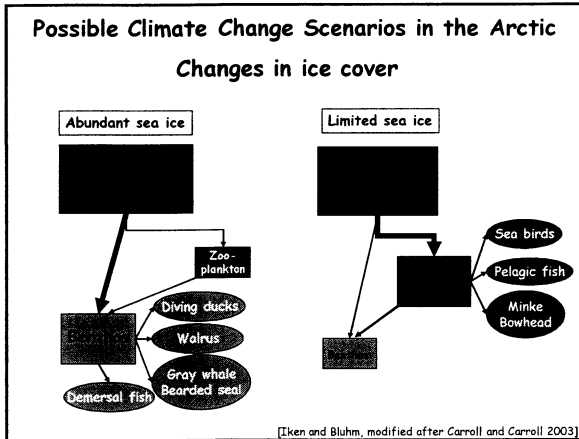
- Discharges at drilling sites and oil wells should result in localized changes.
- Sea bed floor pipeline construction.
- Invasive species.
- Large-scale impacts may result from oil spills with temporally persistent effects on upper trophic levels.
- Cumulative effects make predictions difficult.

Schematic Food Web for Arctic Systems



Pacific walrus: Benthic bioturbator of Beringia (Roy et al., 2006)





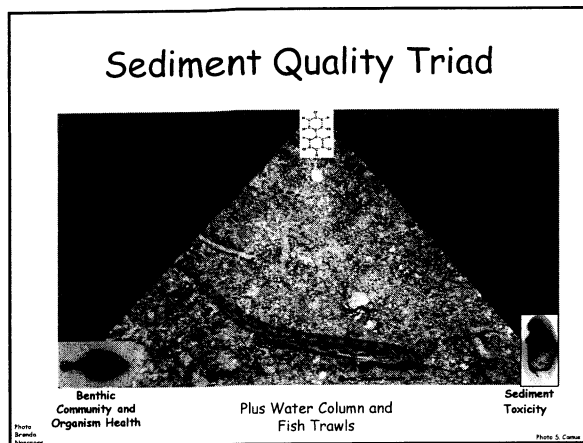
AKMAP Overarching Applied Research Statement

- Estimate the current status of selected aquatic resource indicators within the target population of the coastal Chukchi Sea with known confidence.
 - Estimate the geographic coverage and extent of the ecological resources with known confidence.
 - Seek associations between indicators of natural and oil/gas development activities of condition of ecological resources.
 - Provide for long-term status and trends assessments based on the initial monitoring and assessment work.

AKMAP Sampling Scheme

- Use a probabilistic spatially balanced sampling to assess ecological status over large region.
- At certain locations, use transect sampling or other design to assess concentrations of and changes in select indicators.
- Advantages
 - Gain unbiased estimate of the current status of the region.
 - Gain geographic coverage of percent area sampled for indicators.
 - Can use small-scale grid data for traditional analyses of local variations.

The text block includes three small diagrams. The top one is a line graph with a curve. The middle one is a circular diagram with a grid. The bottom one is a map of the Chukchi Sea with a sampling grid.



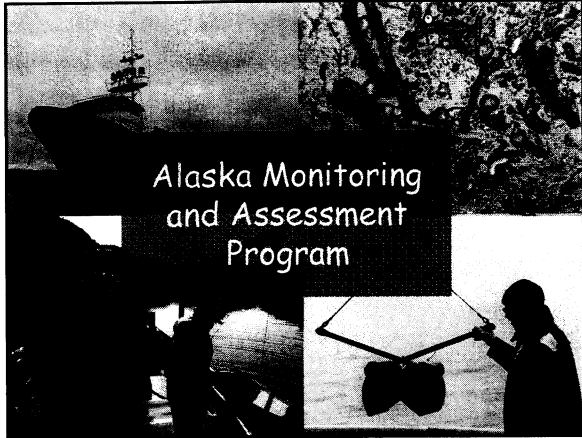
AKMAP Needs Partnerships

ADEC AKMAP requires partners to accomplish current and status long-term trend coastal monitoring and assessment:

- University of Alaska Fairbanks School of Fisheries and Ocean Sciences - Chukchi Sea partner.
- Others
- NOAA National Status and Trends (2009 Kachemak Bay/Cook Inlet). Chukchi Sea ?
- AOOs, North Slope Borough, US Geological Survey, US Fish and Wildlife.

Alaska Arctic Coastal Plain 5 Year National Aquatic Resource Survey Plan

- 2011 - Wetland Survey.
- 2012 - Lakes
- 2013 - Rivers
- 2014 - Streams
- 2015 - Coastal (potential for integrated multi-sampling effort of the Chukchi and Beaufort over the 2011-2015 period.)





[Home](#)
[Project Background](#)
[Team](#)
[Plan](#)
[Meetings](#)
[Documents](#)
[Contacts](#)

Aleutian Islands Risk Assessment Project Home






Updated: January 20, 2010 12:24

Project Update – January 19, 2010

Phase A Draft Vessel Traffic & Spill Report Available for Review

The first draft reports from the Aleutian Island Risk project are now available for review. These reports are intended to provide a high-level understanding of relative risks, taking into consideration types of vessels and hazardous substances and locations where discharges are most likely to occur. Results of these studies, and the upcoming Consequence Analysis (due in April), will allow the Advisory Panel and Management Team to perform a preliminary ranking of risk reduction measures.

The reports can be downloaded as a PDF file, either the entire report (6.9 MB) or as individual sections.

Phase A Work Products	
Name of Document	Download
Draft AIRA Phase A Preliminary Risk Assessment eReport (complete report - 6.9 MB PDF)	
Phase A Report broken into smaller files:	
Draft AIRA Phase A Preliminary Risk Assessment eReport w/o Appendices (594 KB PDF)	
Appendix A – Task 1 (2.5 MB PDF)	
Appendix B – Task 2a (811 KB PDF)	
Appendix C – Task 2b (4.3 MB PDF)	

News/Highlights

Vessel traffic in the Aleutians . . .



Public Comments

The Management Team welcomes public comments on these draft reports. Because of limited time and resources, responses to public comments will not be possible, but all public comments will be considered while developing final revisions to the reports.

Comments are due by 4 PM ADT February 1, 2010.

Please submit your comments using the following [form](#) or by emails to AIRAccomments@nukaresearch.com.

[On-line Comment Form](#)

In order for comments to be considered, please provide the following information:

- your name,
- the section of the report to which your comment applies,
- the page number(s) to which your comment applies,
- your comment or concern clearly stated,
- your recommended changes stated as specifically as possible, and
- any other supporting information that may be helpful, such as web links, reference documents, or data.

For previous Highlight pages, please see:

[Highlights - Where the Sea Breaks Its Back - January 2010](#)

[Highlights - A Call to Students: Design a Salvage Tug for the Aleutian Islands Environment - December 2009](#)

[Highlights from the 3rd Annual Emergency Towing Exercise - October/November 2009](#)

[Highlights from the Advisory Panel Meeting in Unalaska - September 2009](#)

Add your name to our Distribution List for Project Updates



"));