

ANNUAL REPORT OF THE
WESTWARD FLEET COOPERATIVE
YEAR 2011

PREPARED FOR:

NORTH PACIFIC FISHERY MANAGEMENT COUNCIL

MARCH 6, 2012

PREPARED BY:

NATURAL RESOURCES CONSULTANTS, INC.
SEATTLE, WASHINGTON

POINT OF CONTACT:

STEVE HUGHES (206) 285-3480

**ANNUAL REPORT OF THE
WESTWARD FLEET COOPERATIVE
YEAR 2011**

**Presented to the
North Pacific Fishery Management Council
MARCH 6, 2012**

TABLE OF CONTENTS

	Page
INTRODUCTION	1
WESTWARD FLEET MEMBER VESSELS AND CO-OP MANAGEMENT.....	1
WFC BERING SEA POLLOCK ALLOCATION, TRANSFERS AND CATCH	3
OUTSIDE WESTWARD PROCESSOR DELIVERIES.....	4
BYCATCH IN THE BERING SEA POLLOCK FISHERY	4
SIDEBOARD LIMITATIONS, ALLOCATIONS AND CATCHES	5
DIRECTED BERING SEA COD AND GULF POLLOCK FISHERY	5
CATCHES BY GULF SIDEBOARD EXEMPT MEMBER VESSELS.....	6
WFC PROHIBITED SPECIES CATCH TOTALS	6
WFC MONITORING AND ENFORCEMENT	7
EXHIBITS	8-20
ATTACHMENT 1	

LIST OF EXHIBITS

	Page
Exhibit 1. Schematic of Westward Fleet Cooperative operations, 2011.....	8
Exhibit 2. Percent distribution of 2011 Bering Sea “inshore pollock allocation” between the seven inshore AFA pollock cooperatives.....	9
Exhibit 3. Westward Fleet Cooperative member vessel initial pollock allocations expressed as a percentage of the co-op total, as a percentage of the Bering Sea inshore directed pollock fishery, and in metric tons for 2011.	10
Exhibit 4. Westward Fleet Cooperative member vessel final Bering Sea directed pollock allocations for 2011 after within co-op transfers and trades.....	11
Exhibit 5. Comparison of Westward Fleet Cooperative member vessels directed Bering Sea pollock catches with final allocations, 2011.	12
Exhibit 6. Directed pollock fishing catch and bycatch and PSC's for the Westward Fleet Cooperative member vessels, 2011.....	13
Exhibit 7. BSAI sideboard limits and aggregate catch by the Westward Fleet Cooperative member vessels, 2011.	14
Exhibit 8. GOA sideboard limits and aggregate catch by the Westward Fleet Cooperative member vessels, 2011.	15
Exhibit 9. Comparison of Westward Fleet Cooperative member vessels directed Bering Sea Pacific cod catches with final allocations, 2011.	16
Exhibit 10. Directed Pacific cod fishing catch and bycatch for the Westward Fleet Cooperative member vessels, 2011.	17
Exhibit 11. Transfers of Westward Fleet Cooperative Gulf of Alaska pollock sideboard limits to other catcher vessel co-ops, 2011.	18
Exhibit 12. Westward Fleet Cooperative vessel-by-vessel prohibited species catch, 2011.	19
Exhibit 13. Westward Fleet Cooperative vessel-by-vessel total groundfish catch (landed and discarded), 2011.....	20

**ANNUAL REPORT OF THE
WESTWARD FLEET COOPERATIVE
YEAR 2011**

**Presented to the
North Pacific Fishery Management Council
March 6, 2012**

INTRODUCTION

Westward Fleet Cooperative (WFC) is pleased to submit this document and results of their 2011 Bering Sea fishery to the North Pacific Fishery Management Council (NPFMC) in compliance with annual reporting requirements of the 1998 American Fisheries Act (AFA).

Year 2011 was the twelfth year of WFC operations under the AFA. The Westward fleet was managed and operated during 2011 following the successful model established during the previous eleven year's fisheries—basically without change. This document format and 13 exhibits herein reporting WFC co-op members, management, allocations, catches, sideboard limits, prohibited species catches and enforcement is also consistent with WFC's earlier years reporting to the NPFMC. We believe this reporting format and detail is both in keeping with AFA reporting requirements and provides easy comparison to the prior year results.

WESTWARD FLEET MEMBER VESSELS AND CO-OP MANAGEMENT

Managing members representing 11 catcher vessels signed their WFC co-op membership agreement addendum for the 2011 fishing year on December 1, 2010, which enabled them to operate under the laws of the AFA in a fishery cooperative delivering pollock to Westward Seafood Inc., through the 2011 fishing season (Attachment 1) under terms of these agreements. The 2011 managing member owners and their respective vessels are listed below:

F. Gregory Baker, Managing Member

- Viking Limited Partnership F/V *Viking* 130 ft LOA
- Alaskan Command LLC, F/V *Alaskan Command* 185 ft LOA
- Westward Limited Partnership, F/V *Westward I* 127 ft LOA
- Pacific Knight LLC, F/V *Pacific Knight* 165 ft LOA
- Ocean Dynasty Limited Partnership, F/V *Chelsea K* 149 ft LOA

John and Robert Dooley, Managing Member

- Pacific Prince LLC, F/V *Pacific Prince* 148 ft LOA
- Caitlin Ann LLC, F/V *Caitlin Ann* 104 ft LOA

Donald Johnson, Managing Member, Hickory Wind LLC

- F/V *Hickory Wind* 104 ft LOA

Dan Green, Managing Member, Wa'atch, Inc.

- F/V *Alyeska* 125 ft LOA

Bob Desautel, Managing Member, Dona Martita LLC

- F/V *Arctic Wind* 123 ft LOA
- F/V *Dona Martita* 165 ft LOA

Co-op management and administration continued during 2011 basically unchanged from management and administration of the prior co-op years (Exhibit 1). Mr. Robert Dooley continued to serve as the president of WFC and Mr. Tim Cusick served as the co-op coordinator. Coordination of information on allocations, transfers, pollock catches, sideboard catches and prohibited species catches between the Westward plant in Dutch Harbor, the member vessels, Sea State, the Inter co-op Manager and the National Marine Fisheries Service all continued during 2011 as established in year 2000 and as conducted in 2001 through 2010.

WFC BERING SEA POLLOCK ALLOCATION, TRANSFERS AND CATCH

In 2011, the initial pollock allocation to WFC represented 18.488% of the AFA inshore-directed pollock allocation. WFC was the third largest tonnage co-op of the seven AFA inshore co-ops (Exhibit 2). WFC's 11 member vessels received AFA Bering Sea pollock allocations that totaled 102,194 mt. This co-op allocation was distributed among the 11 member vessels. Exhibit 3 provides details of the 11 vessel's initial pollock allocations. Individual vessel Bering Sea pollock allocations are expressed in tonnage, expressed as a percentage of the WFC total allocation and expressed as a percentage of the 2011 inshore directed pollock fishery.

Within the WFC, all of the 11 member vessels transferred pollock allocations among themselves. Two member vessels, *F/V Pacific Knight*, and *F/V Alyeska* transferred most of their allocation to other member vessels and remained inactive in the Bering pollock fishery during 2011. Exhibit 4 identifies the transfers of Bering Sea pollock within the co-op by member vessel and the resulting final allocations to member vessels after transfers were completed. The final allocations shown in Exhibit 4 represented tonnages of Bering Sea pollock available to member vessels for harvesting during the 2011 fishing seasons.

Individual WFC member vessels directed Bering Sea pollock catches by the nine vessels that operated are provided in Exhibit 5 and are compared to their respective final pollock allocations. The WFC total directed Bering Sea pollock catch of their co-op's allocation totaled 90,642.044 mt. Of this total catch, 85,960.239 mt was delivered by WFC vessels and 4,681.805 mt was delivered by four non-WFC vessels (Amendment 69 contract delivery). WFC total pollock deliveries were 88.7% of WFC pollock allocation.

OUTSIDE WESTWARD PROCESSOR DELIVERIES

Member vessels delivered 98.9% of WFC pollock catch to the co-op's affiliated processor--Westward Seafoods, Inc. Only one vessel, the F/V *Hickory Wind* delivered 64.4% of its pollock (965.953 mt) to the M/V *Northern Victor*. Accordingly, WFC member vessels were in compliance with AFA Section (210)(b)(6), which provides that up to 10% of the pollock harvested within a co-op, can be delivered to processors other than the co-op's affiliated processor.

BYCATCH IN THE BERING SEA POLLOCK FISHERY

Bycatch of other groundfish, herring, halibut, crab and salmon from the directed Bering Sea pollock fishery is detailed by member vessel in Exhibit 6. Pollock represented 99.0% of the catch of pollock plus all other groundfish.

Vessel-level detail of salmon bycatch in the directed Bering Sea pollock fishery is reported for WFC in 2011 to meet additional reporting requirements implemented in 2008 under Amendment 84 (salmon bycatch ICA). Specifically, Exhibit 6 summarizes the seasonal (A and B) catches of Chinook and chum salmon (other salmon), and the number of appearances of each vessel on the "dirty 20" lists for both salmon species. To appear on the "dirty 20" list, a vessel must have exceeded the salmon bycatch base rate for that weekly period and have been among the top 20 vessels with the highest salmon bycatch rate for that weekly period.

Additional salmon bycatch measures were in effect under Amendment 91 in 2011. We have been advised that further details of salmon bycatch in 2011 (including the effectiveness of reduction measures) are to be provided in a Chinook salmon IPA annual report and the non-Chinook salmon ICA annual report – both of which are prepared at the Interco-op level.

SIDEBOARD LIMITATIONS, ALLOCATIONS AND CATCHES

The laws of the AFA place limits on AFA qualified catcher vessels whereby their harvest of groundfish other than Bering Sea pollock is limited to historic levels. Halibut bycatch (PSC) is also limited through the co-op sideboard allocations. By AFA definition, all catch of groundfish sideboard species made by non-exempt AFA catcher vessels, whether as targeted catch or incidental catch, are to be deducted from the sideboard limits. These are reported in the final harvest specifications for both the BSAI and GOA (76 FR 11139, 76 FR 11111) and are intended to be a cap on all catches of these species.

Initial BSAI sideboard limits for all AFA CV cooperatives totaled 48,597 mt for all sideboard species. Of this total, only BSAI Pacific cod was allocated further to AFA co-ops and the allocation to WFC vessels totaled 2,913 mt and no Pacific cod was transferred from WFC to other co-ops. A total of 1,724 mt of BSAI sideboard species were caught by WFC vessels and 1,665 mt of WFC allocated sideboards were left unharvested (Exhibit 7). Aggregate differences between catch and sideboard limits for all AFA CV cooperatives will be reported in the Interco-op Report.

Initial GOA sideboard limits for all AFA CV cooperatives totaled 38,375 mt for all sideboard species. Primarily pollock and Pacific cod were allocated further to AFA co-ops and this allocation to WFC vessels totaled 4,528 mt. Of this total, 441 mt were transferred from WFC to other co-ops leaving 4,087 mt of sideboard available to WFC vessels (Exhibit 8). WFC member vessels did not conduct fisheries for pollock or for other species of groundfish in the GOA management region and all GOA sideboard limits were left unharvested.

DIRECTED BERING SEA COD AND GULF POLLOCK FISHERY

WFC's directed Bering Sea Pacific cod allocations, transfers and catches for 2011 are presented in Exhibit 9 by member vessel. Member vessel directed Bering

Sea Pacific cod allocations totaled 2,911.00 mt of which 859.84 mt were harvested by WFC co-op vessels. Only two member vessels participated in the WFC directed Bering Sea Pacific cod harvest. A total of 2,051.16 mt of the final WFC cod allocation remained unharvested.

Bycatch of other groundfish, halibut, herring, crab and salmon in the WFC directed Bering Sea cod fishery is detailed in Exhibit 10. Cod comprised 82.0% of the cod plus other groundfish catch in WFC's directed Bering Sea cod fishery.

As earlier noted in Exhibit 8, WFC's Gulf of Alaska pollock and cod sideboard allocations totaled 4,014 mt and consisted of 3,292 mt Area 610 pollock, 370 mt of Area 620 pollock, 141 mt of Area 630 pollock and 210 mt of Area 640 pollock. Of this total, there were 441 mt transferred to other co-ops as reported in Exhibit 11. WFC member vessels did not fish Gulf of Alaska pollock in 2011 leaving 3,706 mt of Gulf of Alaska pollock un-harvested and un-transferred to other co-ops.

CATCHES BY GULF SIDEBOARD EXEMPT MEMBER VESSELS

One WFC member vessel (*Hickory Wind*) is Gulf of Alaska sideboard exempt. WFC operated within co-op guidelines and did not lease any of their Bering Sea pollock or cod.

WFC PROHIBITED SPECIES AND ALL GROUND FISH CATCH TOTALS

WFC member vessel prohibited species catch totals for halibut, herring, Bristol Bay red king crab, *bairdi* Tanner crab, other Tanner crab, Chinook salmon and other salmon are provided in Exhibit 12. WFC member vessels total catch (landings and discards) by groundfish species, area and vessel is shown in Exhibit 13.

WFC MONITORING AND ENFORCEMENT

All WFC directed Bering Sea pollock and cod catches, as well as sideboard catches and the halibut PSC were successfully managed and did not exceed allocations. The co-op was accordingly not required to take any enforcement actions.

Exhibit 1. Schematic of Westward Fleet Cooperative operations, 2011.

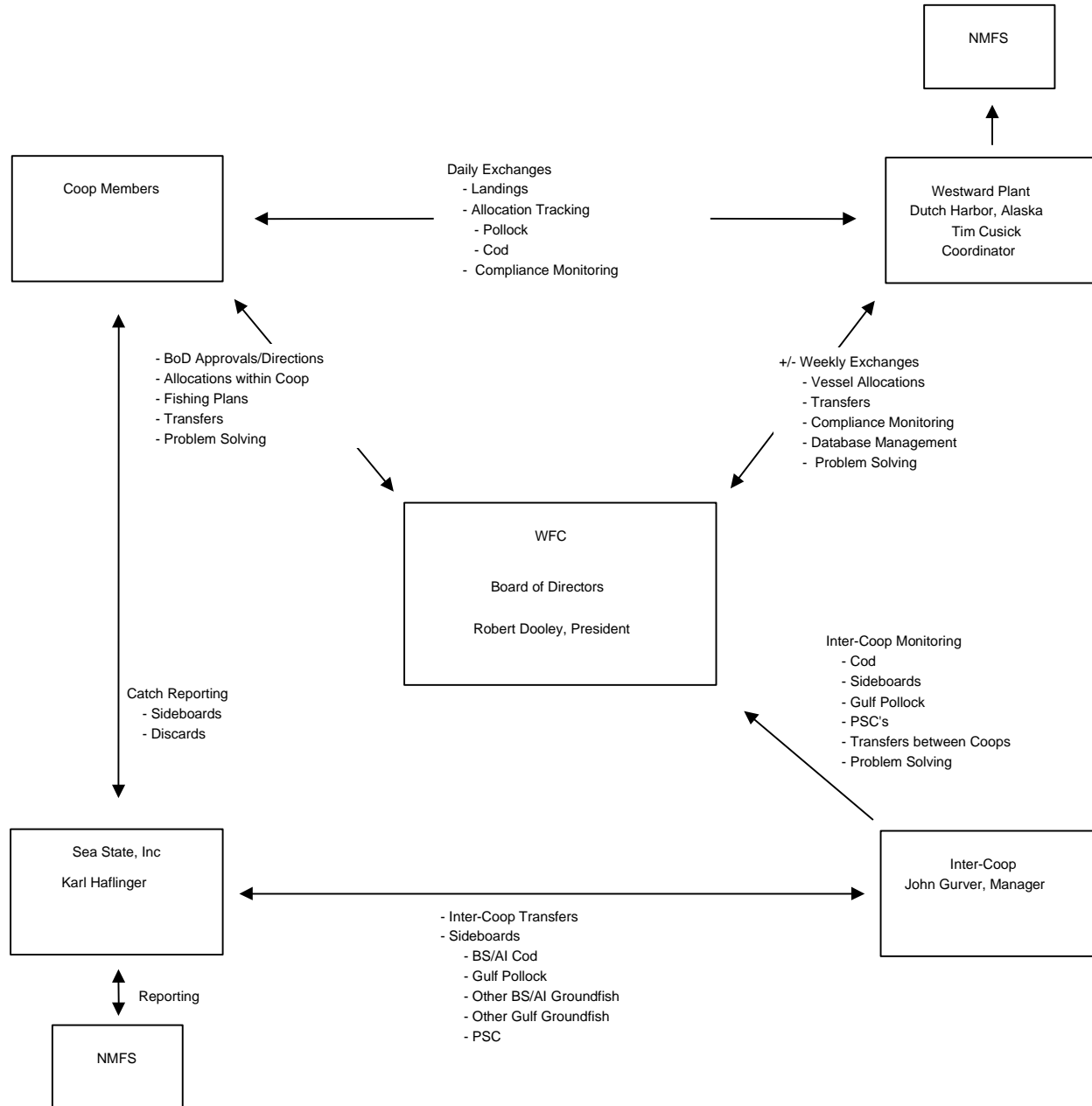


Exhibit 2. Percent distribution of 2011 Bering Sea "inshore pollock allocation" between the seven inshore AFA pollock cooperatives.

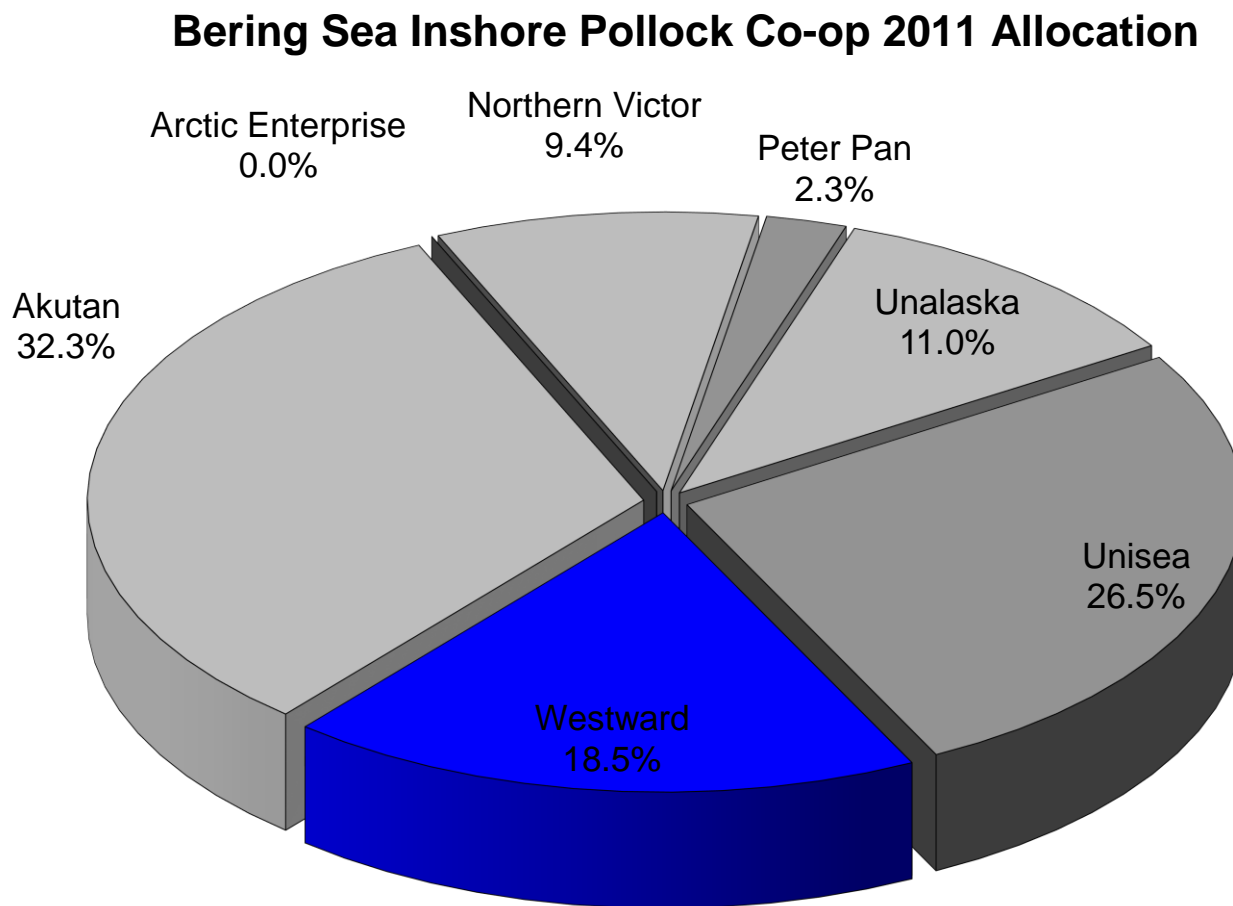


Exhibit 3. Westward Fleet Cooperative member vessel initial pollock allocations expressed as a percentage of the co-op total, as a percentage of the Bering Sea inshore directed pollock fishery, and in metric tons for 2011.

Company Name	Member Vessels	% of Co-op Allocation	% of AFA Inshore Directed Pollock Fishery	Annual Allocation (MT)
Alaskan Command LLC	Alaskan Command	2.012%	0.372%	2,056.164
Wa'atch, Inc.	Alyeska	6.547%	1.210%	6,690.708
Dona Martita LLC	Arctic Wind	5.983%	1.106%	6,114.328
Caitlin Ann LLC	Caitlin Ann	5.183%	0.958%	5,296.768
Ocean Dynasty Limited Partnership	Chelsea K	25.194%	4.658%	25,747.014
Dona Martita LLC	Dona Martita	11.398%	2.107%	11,648.189
Hickory Wind LLC	Hickory Wind	1.557%	0.288%	1,591.176
Pacific Knight LLC	Pacific Knight	11.824%	2.186%	12,083.539
Pacific Prince LLC	Pacific Prince	12.888%	2.383%	13,170.894
Viking Limited Partnership	Viking	8.984%	1.661%	9,181.201
Westward Limited Partnership	Westward 1	8.429%	1.558%	8,614.018
Cooperative Total		100.000%	18.488%	102,194.000 *

* Some totals are rounded. Vessel percentages are as published in cooperative harvest schedule and final allocations are derived using harvest schedule percentages and the final cooperative pollock allocation posted at; http://www.fakr.noaa.gov/sustainablefisheries/afa/11bsaicoopallocations_rev.pdf

Exhibit 4. Westward Fleet Cooperative member vessel final Bering Sea directed pollock allocations for 2011 after within co-op transfers and trades.

Company Name	Member Vessels	Annual Allocation (MT)	Within Co-op Net Transfer In (+) MT & Out (-) MT	Within Co-op Trades In (+) MT & Out (-) MT	Final Pollock Allocation (MT)
Alaskan Command LLC	Alaskan Command	2,056.164	+13,536.692	0.000	15,592.856
Wa'atch, Inc.	Alyeska	6,690.708	-5,913.257	0.000	777.451
Dona Martita LLC	Arctic Wind	6,114.328	+3,942.676	0.000	10,057.005
Caitlin Ann LLC	Caitlin Ann	5,296.768	-286.206	0.000	5,010.562
Ocean Dynasty Limited Partnership	Chelsea K	25,747.014	-88.172	0.000	25,658.842
Dona Martita LLC	Dona Martita	11,648.189	-3,942.676	0.000	7,705.512
Hickory Wind LLC	Hickory Wind	1,591.176	-93.437	0.000	1,497.739
Pacific Knight LLC	Pacific Knight	12,083.539	-10,132.301	0.000	1,951.238
Pacific Prince LLC	Pacific Prince	13,170.894	+374.378	0.000	13,545.272
Viking Limited Partnership	Viking	9,181.201	+1,668.952	0.000	10,850.153
Westward Limited Partnership	Westward 1	8,614.018	+933.351	0.000	9,547.370
Cooperative Total		102,194.000	0.000	0.000	102,194.000 *

* Some totals are rounded.

Exhibit 5. Comparison of Westward Fleet Cooperative member vessels directed Bering Sea pollock catches with final allocations, 2011.

Company Name	Member Vessels	Final Pollock Allocation (MT)	Directed Bering Sea Pollock Catch by Vessel (MT)	Difference Over (+) Under (-)
Alaskan Command LLC	Alaskan Command	15,592.856	15,463.628	-129.228
Wa'atch, Inc.	Alyeska	777.451	0.000	-777.451
Dona Martita LLC	Arctic Wind	10,057.005	9,142.814	-914.191
Caitlin Ann LLC	Caitlin Ann	5,010.562	5,010.412	-0.150
Ocean Dynasty Limited Partnership	Chelsea K	25,658.842	22,089.258	-3,569.583
Dona Martita LLC	Dona Martita	7,705.512	4,681.805 *	-3,023.708
Hickory Wind LLC	Hickory Wind	1,497.739	1,499.012	+1.273
Pacific Knight LLC	Pacific Knight	1,951.238		-1,951.238
Pacific Prince LLC	Pacific Prince	13,545.272	13,544.399	-0.873
Viking Limited Partnership	Viking	10,850.153	10,312.615	-537.538
Westward Limited Partnership	Westward 1	9,547.370	8,898.102	-649.268
Cooperative Total		102,194.000	90,642.044	-11,551.956

* Directed catch includes Amendment 69 contractual fishing amounts as reported by the Co-op where 4,681.805 mt of F/V Dona Martita allocation was delivered by four non-WFC vessels. Some totals are rounded.

Exhibit 6. Directed pollock fishing catch and bycatch and PSC's for the Westward Fleet Cooperative member vessels, 2011.

Company Name	Member Vessels	Directed Bering Sea Pollock Catch by Vessel (MT)	Other Groundfish (MT)	Herring (MT)	Halibut Mortality (MT)	Red King Crab (#)	<i>Bairdi</i> Tanner Crab (#)	<i>Other</i> Tanner Crab (#)	A Season**		B Season**	
									Chinook Salmon # (D2)	Other Salmon # (D2)	Chinook Salmon # (D2)	Other Salmon # (D2)
Alaskan Command LLC	Alaskan Command	15,463.628	143.081	0	5	0	0	0	168 (0)	0 (0)	511 (0)	4,365 (8)
Wa'atch, Inc.	Alyeska	0.000	0.000	0	0	0	0	0	0 (0)	0 (0)	0 (0)	0 (0)
Dona Martita LLC	Arctic Wind	9,142.814	103.843	0	1	0	0	3	84 (0)	0 (0)	287 (0)	1,833 (6)
Caitlin Ann LLC	Caitlin Ann	5,010.412	90.826	4	0	0	0	0	10 (0)	0 (0)	74 (0)	1,558 (5)
Ocean Dynasty Limited Partnership	Chelsea K	22,089.258	159.365	6	5	0	0	0	187 (0)	1 (0)	784 (0)	4,178 (7)
Dona Martita LLC	Dona Martita*	4,681.805	46.062	0	0	0	0	0	184 (0)	1 (0)	171 (0)	1,135 (0)
Hickory Wind LLC	Hickory Wind	1,499.012	27.770	0	0	0	0	0	14 (0)	0 (0)	43 (0)	855 (1)
Pacific Knight LLC	Pacific Knight	0.000	0.000	0	0	0	0	0	0 (0)	0 (0)	0 (0)	0 (0)
Pacific Prince LLC	Pacific Prince	13,544.399	138.021	7	1	0	0	31	70 (0)	3 (0)	157 (0)	3,574 (5)
Viking Limited Partnership	Viking	10,312.615	97.638	2	4	0	0	0	73 (0)	1 (0)	327 (0)	2,201 (8)
Westward Limited Partnership	Westward 1	8,898.102	107.718	1	6	0	14	8	78 (0)	1 (0)	134 (0)	1,068 (3)
Cooperative Total		90,642.044	914.325	20	23	0	14	42	868	7	2,488	20,767

Directed pollock catch totals are from Westward. All other PSCs and Other Groundfish are from Seastate.

* All F/V Dona Martita catches are from Amendment 69 contractual fishing by four other vessels.

** Chinook and other salmon counts per vessel by season and number of appearances of each vessel on the weekly "dirty 20" list (D2)

Exhibit 7. BSAI sideboard limits and aggregate catch by the Westward Fleet Cooperative member vessels, 2011.

BSAI Sideboard Species Limits from 2011 Final Specs Table 13*	Total AFA CV Sideboard Limit (mt)	Initial WFC* Sideboard Limit (mt)	Inter-Co-op Sideboard Transfer (mt)	Final Sideboard Limit (mt)**	WFC Co-op Catch (mt)	Difference Over "+" (mt) Under "-" (mt)
BSAI Pacific cod	38,729	2,913	0	2,913	1,248	-1,665
BS Sablefish	110	NA	NA	NA	0	NA
AI Sablefish	26	NA	NA	NA	0	NA
Eastern BSAI Atka mackerel	58	NA	NA	NA	0	NA
Central AI Atka mackerel	1	NA	NA	NA	0	NA
Western AI Atka mackerel	0	NA	NA	NA	0	NA
BSAI rock sole	2,588	NA	NA	NA	42	NA
BS Greenland turbot	192	NA	NA	NA	0	NA
AI Greenland turbot	27	NA	NA	NA	0	NA
BSAI arrowtooth flounder	1,519	NA	NA	NA	107	NA
BSAI Kamchatka flounder	1,038	NA	NA	NA	0	NA
BSAI Alaska plaice	600	NA	NA	NA	0	NA
BSAI other flatfish	112	NA	NA	NA	44	NA
BSAI flathead sole	1,874	NA	NA	NA	198	NA
BS Pacific ocean perch	485	NA	NA	NA	9	NA
Eastern AI Pacific ocean perch	39	NA	NA	NA	0	NA
Central AI Pacific ocean perch	11	NA	NA	NA	0	NA
Western AI Pacific ocean perch	0	NA	NA	NA	0	NA
BSAI northern rockfish	34	NA	NA	NA	0	NA
BSAI shortraker rockfish	1	NA	NA	NA	0	NA
EBS/EAI rougheye rockfish	1	NA	NA	NA	0	NA
CAI/WAI rougheye rockfish	1	NA	NA	NA	0	NA
BS other rockfish	2	NA	NA	NA	0	NA
AI other rockfish	4	NA	NA	NA	0	NA
BSAI squid	138	NA	NA	NA	16	NA
BSAI skates	759	NA	NA	NA	54	NA
BSAI sharks	2	NA	NA	NA	0	NA
BSAI octopuses	7	NA	NA	NA	0	NA
BSAI sculpins	239	NA	NA	NA	6	NA
Co-op All Species Sideboard Total	48,597	NA	0	NA	1,724	-1,665

PSC limited halibut for Bering Sea
Directed cod fishery

28

Note: Some totals are rounded. Catch totals are from Seastate data
Yellowfin sole exempted as sideboard species by 679.64(b)(6).

* WFC sideboard allocations are made from total AFA CV sideboard limit when a directed fishery may occur - for 2011 this was for Pacific cod only as directed fishing is prohibited (see Table 13, 76FR11139) for all BSAI sideboard species except Pacific cod and yellowfin sole (see note* above).

** Final sideboard limit totals may also include amounts withheld for bycatch requirements.

Exhibit 8. GOA sideboard limits and aggregate catch by the Westward Fleet Cooperative member vessels, 2011.

GOA Sideboard Species Limits from 2011 Final Specs Table 14*	Total AFA CV Sideboard Limit (mt)	Initial WFC* Sideboard Limit (mt)	Inter-Co-op Sideboard Transfer (mt)	Final Sideboard Limit (mt)**	WFC Co-op Catch (mt)	Difference Over "+" (mt) Under "-" (mt)
Area 610 "A" season pollock	2,895	583	0	583	0	-583
Area 620 "A" season pollock	1,388	118	-110	8	0	-8
Area 630 "A" season pollock	908	31	-31	0	0	0
Area 610 "B" season pollock	2,895	583	0	583	0	-583
Area 620 "B" season pollock	1,661	141	-130	11	0	-11
Area 630 "B" season pollock	434	15	-15	0	0	0
Area 610 "C" season pollock	5,278	1,063	0	1,063	0	-1,063
Area 620 "C" season pollock	656	56	0	56	0	-56
Area 630 "C" season pollock	1,381	47	-22	25	0	-25
Area 610 "D" season pollock	5,278	1,063	0	1,063	0	-1,063
Area 620 "D" season pollock	656	56	0	56	0	-56
Area 630 "D" season pollock	1,381	47	0	47	0	-47
Area 640 Annual pollock	817	210	0	210	0	-210
Area 650 Annual pollock	3,231	NA	NA	NA	0	NA
Western "A" season GOA Pacific cod	1,819	133	-133	0	0	0
Central "A" season GOA Pacific cod	1,677	129	0	129	0	-129
Western "B" season GOA Pacific cod	1,214	89	0	89	0	-89
Central "B" season GOA Pacific cod	1,117	95	0	95	0	-95
Eastern Annual GOA Pacific cod	16	NA	NA	NA	0	NA
Western GOA deep-water flatfish	0	0	0	0	0	NA
Central GOA deep-water flatfish	189	10	0	10	0	-10
Eastern GOA deep-water flatfish	27	NA	NA	NA	0	NA
Western GOA rex sole	1	NA	NA	NA	0	NA
Central GOA rex sole	242	13	0	13	0	-13
Eastern GOA rex sole	3	NA	NA	NA	0	NA
Western GOA flathead sole	7	NA	NA	NA	0	NA
Central GOA flathead sole	107	NA	NA	NA	0	NA
Eastern GOA flathead sole	2	NA	NA	NA	0	NA
Western GOA shallow-water flatfish	70	NA	NA	NA	0	NA
Central GOA shallow-water flatfish	763	0	0	0	0	0
Eastern GOA shallow-water flatfish	15	NA	NA	NA	0	NA
Western GOA arrowtooth flounder	17	NA	NA	NA	0	NA
Central GOA arrowtooth flounder	840	45	0	45	0	-45
Eastern GOA arrowtooth flounder	1	NA	NA	NA	0	NA
Western GOA sablefish	0	0	0	0	0	NA
Central GOA sablefish	61	NA	NA	NA	0	NA
Eastern GOA sablefish	11	NA	NA	NA	0	NA
Western GOA Pacific ocean perch	6	NA	NA	NA	0	NA
Central GOA Pacific ocean perch	776	NA	NA	NA	0	NA
Eastern GOA Pacific ocean perch	90	NA	NA	NA	0	NA
Western GOA shortraker rockfish	0	0	0	0	0	NA
Central GOA shortraker rockfish	7	NA	NA	NA	0	NA
Eastern GOA shortraker rockfish	5	NA	NA	NA	0	NA
Western GOA rougheye rockfish	0	0	0	0	0	NA
Central GOA rougheye rockfish	21	NA	NA	NA	0	NA
Eastern GOA rougheye rockfish	5	NA	NA	NA	0	NA
Western GOA other rockfish	1	NA	NA	NA	0	NA
Central GOA other rockfish	86	NA	NA	NA	0	NA
Eastern GOA other rockfish	0	0	0	0	0	NA
Western GOA northern rockfish	1	NA	NA	NA	0	NA
Central GOA northern rockfish	63	NA	NA	NA	0	NA
Western GOA pelagic shelf rockfish	0	0	0	0	0	NA
Central GOA pelagic shelf rockfish	0	0	0	0	0	NA
Eastern GOA pelagic shelf rockfish	3	NA	NA	NA	0	NA
Western GOA thornyhead rockfish	12	NA	NA	NA	0	NA
Central GOA thornyhead rockfish	18	NA	NA	NA	0	NA
Eastern GOA thornyhead rockfish	20	NA	NA	NA	0	NA
Western GOA big skates	4	NA	NA	NA	0	NA
Central GOA big skates	13	NA	NA	NA	0	NA
Eastern GOA big skates	4	NA	NA	NA	0	NA
Western GOA longnose skates	1	NA	NA	NA	0	NA
Central GOA longnose skates	13	NA	NA	NA	0	NA
Eastern GOA longnose skates	5	NA	NA	NA	0	NA
GOA other skates	13	NA	NA	NA	0	NA
SEO GOA demersal shelf rockfish	1	NA	NA	NA	0	NA
GOA Atka mackerel	62	NA	NA	NA	0	NA
GOA squids	7	NA	NA	NA	0	NA
GOA sharks	39	NA	NA	NA	0	NA
GOA octopuses	6	NA	NA	NA	0	NA
GOA sculpins	35	NA	NA	NA	0	NA
Co-op All Species Sideboard Total	38,375	4,528	-441	4,087	0	-4,087

Note: Some totals are rounded. Catch totals are from Westward & Seastate data.

* WFC sideboard allocations are made from total AFA CV sideboard limit (Table 14, 76FR11111) when a directed fishery may occur.

** Final sideboard limit totals may also include amounts withheld for bycatch requirements.

Exhibit 9. Comparison of Westward Fleet Cooperative member vessels directed Bering Sea Pacific cod catches with final allocations, 2011.

Company Name	Member Vessels	Initial Coop Cod Allocation (MT)	Within Coop Net Transfer In (+) & Out (-)	InterCoop Transfers (MT) In (+), Out (-)	Westward Coop Final Adjusted Cod Allocation (MT)	Directed Bering Sea Cod Catch by Vessel (MT)	Difference Over (+) Under (-)
Alaskan Command LLC	Alaskan Command	0.00	0.00	0.00	0.00	0.00	0.00
Wa'atch, Inc.	Alyeska	0.00	0.00	0.00	0.00	0.00	0.00
Dona Martita LLC	Arctic Wind	454.73	0.00	0.00	454.73	0.00	-454.73
Caitlin Ann LLC	Caitlin Ann	464.65	+431.39	0.00	896.03	666.53	-229.50
Ocean Dynasty Limited Partnership	Chelsea K	83.26	-83.26	0.00	0.00	0.00	0.00
Dona Martita LLC	Dona Martita	404.53	0.00	0.00	404.53	0.00	-404.53
Hickory Wind LLC	Hickory Wind	132.08	+83.26	0.00	215.34	193.31	-22.03
Pacific Knight LLC	Pacific Knight	179.05	0.00	0.00	179.05	0.00	-179.05
Pacific Prince LLC	Pacific Prince	431.39	-431.39	0.00	0.00	0.00	0.00
Viking Limited Partnership	Viking	393.34	0.00	0.00	393.34	0.00	-393.34
Westward Limited Partnership	Westward 1	367.98	0.00	0.00	367.98	0.00	-367.98
Coop Total		2,911.00	0.00	0.00	2,911.00	859.84	-2,051.16

Exhibit 10. Directed Pacific cod fishing catch and bycatch for the Westward Fleet Cooperative member vessels, 2011.

Company Name	Member Vessels	Directed Bering Sea Cod Catch by Vessel (MT)	Other Groundfish Catch (MT)	Halibut Mortality (MT)	Herring Catch (MT)	Red King Catch (#)	<i>Bairdi</i> Tanner Catch (#)	Other Tanner Catch (#)	Chinook Salmon (#)	Other Salmon (#)
Alaskan Command LLC	Alaskan Command	0.000	0.000	0	0	0	0	0	0	0
Wa'atch, Inc.	Alyeska	0.000	0.000	0	0	0	0	0	0	0
Dona Martita LLC	Arctic Wind	0.000	0.000	0	0	0	0	0	0	0
Caitlin Ann LLC	Caitlin Ann	666.530	149.095	5	0	0	4	3	0	0
Ocean Dynasty Limited Partnership	Chelsea K	0.000	0.000	0	0	0	0	0	0	0
Dona Martita LLC	Dona Martita	0.000	0.000	0	0	0	0	0	0	0
Hickory Wind LLC	Hickory Wind	193.310	39.910	2	0	0	66	63	0	0
Pacific Knight LLC	Pacific Knight	0.000	0.000	0	0	0	0	0	0	0
Pacific Prince LLC	Pacific Prince	0.000	0.000	0	0	0	0	0	0	0
Viking Limited Partnership	Viking	0.000	0.000	0	0	0	0	0	0	0
Westward Limited Partnership	Westward 1	0.000	0.000	0	0	0	0	0	0	0
Coop Total		859.840	189.005	7	0	0	70	66	0	0

Pacific cod catch totals are from Westward. All other PSCs and Other Groundfish are from Seastate.

Exhibit 11. Transfers of Westward Fleet Cooperative Gulf of Alaska pollock and cod sideboard limits to other catcher vessel co-ops, 2011.

Gulf Area/Season	Transfers To	Transfer Amount (MT)
WGOA Cod A Season	Peter Pan	133.000
620 A Season	Unalaska Co-op	110.000
620 B Season	Unalaska Co-op	130.000
630 A Season	Unalaska Co-op	41.000
630 B Season	Unalaska Co-op	27.000
Total GOA Transfers		441.000

* Some transfer amounts are preliminary.

Exhibit 12. Westward Fleet Cooperative vessel-by-vessel prohibited species catch, 2011.

Company Name	Member Vessels	Total Halibut Mortality (MT)	Total Herring Catch (MT)	Total Red King Crab (#)	Total Bairdi Tanner Crab (#)	Total Other Tanner Crab (#)	Total Chinook Salmon (#)	Total Other Salmon (#)
Alaskan Command LLC	Alaskan Command	5	0	0	0	0	168	4,365
Wa'atch, Inc.	Alyeska	0	0	0	0	0	0	0
Dona Martita LLC	Arctic Wind	1	0	0	0	3	84	1,833
Caitlin Ann LLC	Caitlin Ann	5	4	0	4	3	10	1,558
Ocean Dynasty Limited Partnership	Chelsea K	5	6	0	0	0	187	4,178
Dona Martita LLC	Dona Martita	0	0	0	0	0	184	1,135
Hickory Wind LLC	Hickory Wind	2	0	0	66	63	14	855
Pacific Knight LLC	Pacific Knight	0	0	0	0	0	0	0
Pacific Prince LLC	Pacific Prince	1	7	0	0	31	70	3,574
Viking Limited Partnership	Viking	4	2	0	0	0	73	2,201
Westward Limited Partnership	Westward 1	6	1	0	14	8	78	1,068
Coop Total		30	20	0	84	108	868	20,767

Exhibit 13. Westward Fleet Cooperative vessel-by-vessel total groundfish catch (landed and discarded mt), 2011.

	GF Spp/Area	AK Command	Alyeska	Arctic Wind	Caitlin Ann	Chelsea K	Dona Martita*	Hickory Wind	Pacific Knight	Pacific Prince	Viking	Westward II	WFC Total
Landed Catch (mt)	Pollock BS	15,464	0	9,143	5,010	22,089	4,682	1,499	0	13,544	10,313	8,898	90,642
	Pcod BSAI	62	0	54	690	74	22	205	0	50	51	40	1,248
	Flathead BSAI	39	0	23	13	41	6	2	0	26	21	26	198
	Arrowtooth BSAI	20	0	10	5	16	10	1	0	13	10	22	107
	Skates BSAI	6	0	11	4	11	3	1	0	7	5	7	54
	Oflats BSAI	9	0	4	3	5	2	0	0	11	5	7	44
	Rocksole BSAI	6	0	1	4	12	3	1	0	6	4	6	42
	Squid BSAI	0	0	0	0	0	0	0	0	15	0	0	16
	POP BS	0	0	0	0	0	0	0	0	8	0	0	9
	Sculpins BSAI	1	0	1	0	1	0	0	0	1	1	0	6
	Yellowfin BSAI	0	0	0	0	0	0	0	0	0	0	0	1
	ORockfish BS	0	0	0	0	0	0	0	0	0	0	0	0
	Turbot BS	0	0	0	0	0	0	0	0	0	0	0	0
	Octopus BSAI	0	0	0	0	0	0	0	0	0	0	0	0
	Mackerel BS/541	0	0	0	0	0	0	0	0	0	0	0	0
	Northern BSAI	0	0	0	0	0	0	0	0	0	0	0	0
	AKPlaice BSAI	0	0	0	0	0	0	0	0	0	0	0	0
	Sharks BSAI	0	0	0	0	0	0	0	0	0	0	0	0
	Sablefish BS	0	0	0	0	0	0	0	0	0	0	0	0
	Shortraker BSAI	0	0	0	0	0	0	0	0	0	0	0	0
Kamchatka BSAI	0	0	0	0	0	0	0	0	0	0	0	0	
Discarded Catch (mt)	Pollock BS	3	0	2	58	5	2	21	0	2	1	1	96
	Pcod BSAI	0	0	0	4	0	0	0	0	0	0	0	4
	Flathead BSAI	0	0	0	4	0	0	2	0	0	0	0	5
	Arrowtooth BSAI	0	0	0	3	0	0	2	0	0	0	0	5
	Skates BSAI	0	0	0	5	0	0	2	0	0	0	0	7
	Oflats BSAI	0	0	0	1	0	0	0	0	0	0	0	1
	Rocksole BSAI	0	0	0	17	0	0	3	0	0	0	0	20
	Squid BSAI	0	0	0	0	0	0	0	0	0	0	0	0
	POP BS	0	0	0	0	0	0	0	0	0	0	0	0
	Sculpins BSAI	0	0	0	6	0	0	2	0	0	0	0	7
	Yellowfin BSAI	0	0	0	0	0	0	0	0	0	0	0	0
	ORockfish BS	0	0	0	0	0	0	0	0	0	0	0	0
	Turbot BS	0	0	0	0	0	0	0	0	0	0	0	0
	Octopus BSAI	0	0	0	0	0	0	0	0	0	0	0	0
	Mackerel BS/541	0	0	0	0	0	0	0	0	0	0	0	0
	Northern BSAI	0	0	0	0	0	0	0	0	0	0	0	0
	AKPlaice BSAI	0	0	0	0	0	0	0	0	0	0	0	0
	Sharks BSAI	0	0	0	0	0	0	0	0	0	0	0	0
	Sablefish BS	0	0	0	0	0	0	0	0	0	0	0	0
	Shortraker BSAI	0	0	0	0	0	0	0	0	0	0	0	0
Kamchatka BSAI	0	0	0	0	0	0	0	0	0	0	0	0	

* fished by four other vessels under Amendment 69 contract.

Note:

Total landings and discards by vessel are provided by WFC and Seastate and may not include adjustments from final NMFS observer data and represent all directed or incidental catch of both landings and discards taken in all WFC fishing in 2011.

ATTACHMENT 1

WFC MEMBERSHIP AGREEMENT 2011 ADDENDUM

WESTWARD FLEET COOPERATIVE

MEMBERSHIP AGREEMENT


2011 ADDENDUM

Each of the undersigned hereby acknowledges and agrees that the terms and conditions of the Westward Fleet Cooperative Membership Agreement dated as of December 23, 1999, as amended by that First Amendment to Membership Agreement dated as of January 15, 2004, that Membership Agreement Addendum dated as of January 12, 2006, and that Membership Agreement Addendum dated as of November 16, 2010 shall be in full force and effect among the undersigned for the year 2011, and that Exhibit A attached hereto supersedes Exhibit A to the Membership Agreement and to all prior amendments and addenda thereto.


In addition, each of the undersigned hereby certifies that the vessel on behalf of which it is executing this Addendum: (i) delivered more pollock to Westward Seafoods, Inc. than to any other AFA inshore processor in the last year in which the vessel engaged in directed fishing for pollock in the BSAI for delivery to the inshore sector; (ii) is a qualified catcher vessel; (iii) is otherwise eligible to fish for groundfish in the BSAI; (iv) has an AFA catcher vessel permit with an inshore endorsement; and (v) has no permit sanctions or other type of sanctions against it that would prevent it from fishing for groundfish in the BSAI.

Dated effective as of December 1, 2010.

F/V ALASKAN COMMAND
Alaskan Command L.L.C.

By: 
Its: ENG MNGR

F/V ALYESKA
Wa'atch, Inc.

By: 
Its: PofA

F/V ARCTIC WIND
Dona Martita LLC

By: _____
Its: _____

F/V CAITLIN ANN
Caitlin Ann, LLC

By: _____
Its: _____

[SIGNATURES CONTINUE ON PAGE 2]

WESTWARD FLEET COOPERATIVE

MEMBERSHIP AGREEMENT

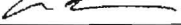
2011 ADDENDUM

Each of the undersigned hereby acknowledges and agrees that the terms and conditions of the Westward Fleet Cooperative Membership Agreement dated as of December 23, 1999, as amended by that First Amendment to Membership Agreement dated as of January 15, 2004, that Membership Agreement Addendum dated as of January 12, 2006, and that Membership Agreement Addendum dated as of November 16, 2010 shall be in full force and effect among the undersigned for the year 2011, and that Exhibit A attached hereto supersedes Exhibit A to the Membership Agreement and to all prior amendments and addenda thereto.

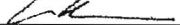
In addition, each of the undersigned hereby certifies that the vessel on behalf of which it is executing this Addendum: (i) delivered more pollock to Westward Seafoods, Inc. than to any other AFA inshore processor in the last year in which the vessel engaged in directed fishing for pollock in the BSAI for delivery to the inshore sector; (ii) is a qualified catcher vessel; (iii) is otherwise eligible to fish for groundfish in the BSAI; (iv) has an AFA catcher vessel permit with an inshore endorsement; and (v) has no permit sanctions or other type of sanctions against it that would prevent it from fishing for groundfish in the BSAI.

Dated effective as of December 1, 2010.

F/V ALASKAN COMMAND
Alaskan Command L.L.C.

By: 
Its: ENG MNGR

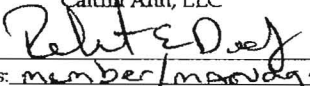
F/V ALYESKA
Wa'atch, Inc.

By: 
Its: Pat A

F/V ARCTIC WIND
Dona Martita LLC

By: _____
Its: _____

F/V CAITLIN ANN
Caitlin Ann, LLC

By: 
Its: member/manager

[SIGNATURES CONTINUE ON PAGE 2]

WESTWARD FLEET COOPERATIVE

MEMBERSHIP AGREEMENT

2011 ADDENDUM

Each of the undersigned hereby acknowledges and agrees that the terms and conditions of the Westward Fleet Cooperative Membership Agreement dated as of December 23, 1999, as amended by that First Amendment to Membership Agreement dated as of January 15, 2004, that Membership Agreement Addendum dated as of January 12, 2006, and that Membership Agreement Addendum dated as of November 16, 2010 shall be in full force and effect among the undersigned for the year 2011, and that Exhibit A attached hereto supersedes Exhibit A to the Membership Agreement and to all prior amendments and addenda thereto.

In addition, each of the undersigned hereby certifies that the vessel on behalf of which it is executing this Addendum: (i) delivered more pollock to Westward Seafoods, Inc. than to any other AFA inshore processor in the last year in which the vessel engaged in directed fishing for pollock in the BSAI for delivery to the inshore sector; (ii) is a qualified catcher vessel; (iii) is otherwise eligible to fish for groundfish in the BSAI; (iv) has an AFA catcher vessel permit with an inshore endorsement; and (v) has no permit sanctions or other type of sanctions against it that would prevent it from fishing for groundfish in the BSAI.

Dated effective as of December 1, 2010.

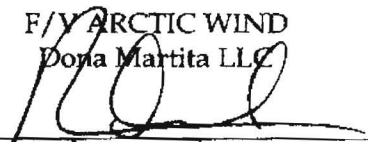
F/V ALASKAN COMMAND
Alaskan Command L.L.C.

By: _____
Its: _____

F/V ALYESKA
Wa'atch, Inc.

By: _____
Its: _____

F/V ARCTIC WIND
Dona Martita LLC

By:  _____
Its: *Vice chair* _____

F/V CAITLIN ANN
Caitlin Ann, LLC

By: _____
Its: _____

[SIGNATURES CONTINUE ON PAGE 2]

F/V CHELSEA K
Ocean Dynasty Limited Partnership

By: 
Its: ENG MNGR


F/V DONA MARTITA
Dona Martita LLC

By: _____
Its: _____

F/V HICKORY WIND
Hickory Wind, LLC

By: _____
Its: _____

F/V PACIFIC KNIGHT
Pacific Knight LLC

By: 
Its: ENG MNGR


F/V PACIFIC PRINCE
Pacific Prince, LLC

By: _____
ITS: _____


F/V VIKING
Viking Limited Partnership

By: 
Its: ENG MNGR

F/V WESTWARD 1
Westward Limited Partnership

By: 
Its: ENG MNGR

WESTWARD FLEET COOPERATIVE

By: 
Its: EXECUTIVE DIRECTOR

F/V CHELSEA K
Ocean Dynasty Limited Partnership

By: [Signature]
Its: ENG MGR

F/V DONA MARTITA
Dona Martita LLC

By: _____
Its: _____

F/V HICKORY WIND
Hickory Wind, LLC

By: _____
Its: _____

F/V PACIFIC KNIGHT
Pacific Knight LLC

By: [Signature]
Its: ENG MGR

F/V PACIFIC PRINCE
Pacific Prince, LLC

By: [Signature]
Its: member/manager

F/V VIKING
Viking Limited Partnership

By: [Signature]
Its: ENG MGR

F/V WESTWARD 1
Westward Limited Partnership

By: [Signature]
Its: ENG MGR

WESTWARD FLEET COOPERATIVE

By: _____
Its: _____

F/V CHELSEA K
Ocean Dynasty Limited Partnership

By: [Signature]
Its: ENG MNGR

F/V DONA MARTITA
Dona Martita LLC

By: _____
Its: _____

F/V HICKORY WIND
Hickory Wind, LLC

By: [Signature]
Its: OWNER

F/V PACIFIC KNIGHT
Pacific Knight LLC

By: [Signature]
Its: ENG MNGR

F/V PACIFIC PRINCE
Pacific Prince, LLC

By: _____
Its: _____

F/V VIKING
Viking Limited Partnership

By: [Signature]
Its: ENG MNGR

F/V WESTWARD 1
Westward Limited Partnership

By: [Signature]
Its: ENG MNGR

WESTWARD FLEET COOPERATIVE

By: _____
Its: _____

F/V CHELSEA K
Ocean Dynasty Limited Partnership

By: _____
Its: _____

F/V DONA MARTITA
Dona Martita LLC

By: _____
Its: My Member

F/V HICKORY WIND
Hickory Wind, LLC

By: _____
Its: _____

F/V PACIFIC KNIGHT
Pacific Knight LLC

By: _____
Its: _____

F/V PACIFIC PRINCE
Pacific Prince, LLC

By: _____
ITS: _____

F/V VIKING
Viking Limited Partnership

By: _____
Its: _____

F/V WESTWARD 1
Westward Limited Partnership

By: _____
Its: _____

WESTWARD FLEET COOPERATIVE

By: _____
Its: _____

WESTWARD FLEET COOPERATIVE
EXHIBIT A TO 2011 ADDENDUM

BERING SEA/ALEUTIAN ISLANDS POLLOCK FISHERY
HARVEST SCHEDULE

<i>Member</i>	<i>Vessel</i>	<i>Percentage of Allocation</i>
Alaskan Command L.L.C.	ALASKAN COMMAND	2.012
Wa'atch, Inc.	ALYESKA	6.547
Dona Martita LLC	ARCTIC WIND	5.983
Caitlin Ann, LLC	CAITLIN ANN	5.183
Ocean Dynasty Limited Partnership	CHELSEA K	25.194
Dona Martita LLC	DONA MARTITA	11.398
Hickory Wind, LLC	HICKORY WIND	1.557
Pacific Knight LLC	PACIFIC KNIGHT	11.824
Pacific Prince, LLC	PACIFIC PRINCE	12.888
Viking Limited Partnership	VIKING	8.984
Westward Limited Partnership	WESTWARD 1	8.429
TOTAL		100.000%