

**AUDIT OF SALMON CLOSURE ZONE COMPLIANCE MONITORING,  
BERING SEA POLLOCK FISHERY, 2009**

**FINAL REPORT**

Prepared for

**Sea State Inc.**  
PO Box 74  
Vashon, WA 98070

Prepared by

Christopher S. Swingley  
**ABR, Inc.—Environmental Research & Services**  
PO Box 80410  
Fairbanks, AK 99708

February 2010



*Printed on recycled paper.*



## TABLE OF CONTENTS

LIST OF TABLES .....	iii
LIST OF FIGURES .....	iv
LIST OF APPENDICES .....	iv
BACKGROUND .....	1
STUDY OBJECTIVES.....	1
ASSUMPTIONS.....	1
AUDIT METHODS.....	2
SUBSET SELECTION .....	2
IDENTIFICATION OF CANDIDATE CLOSURE ZONE VIOLATIONS .....	3
BUFFER FILTER .....	3
TIER STATUS FILTER .....	4
SPEED FILTER .....	5
VISUAL EXAMINATION.....	5
VESSEL LOGBOOKS .....	6
COMPARISON WITH SEA STATE DETERMINATIONS.....	6
RESULTS AND DISCUSSION.....	6
IDENTIFICATION OF CANDIDATE CLOSURE ZONE VIOLATIONS .....	6
IDENTIFYING CANDIDATE VIOLATIONS.....	6
CATEGORIZING CANDIDATE VIOLATIONS.....	7
ANALYSIS OF VMS LOCATION SYSTEMS.....	7
COMPARISON WITH SEA STATE DETERMINATIONS.....	8
CONCLUSIONS .....	8
LITERATURE CITED .....	9

## LIST OF TABLES

Table 1.	Number of vessel locations considered at different stages of the closure violation audit, Bering Sea pollock fishery, 2009 .....	10
Table 2.	Results of ABR review of candidate violations of the closure zones, Bering Sea pollock fishery, 2009 .....	10
Table 3.	Speed analysis of four different VMS location providers, Bering Sea Pollock fishery, 2009 .....	11
Table 4.	Standard deviation analysis of speed and heading for data windows along vessel tracks for each VMS location provider, Bering Sea Pollock fishery, 2009 .....	11
Table 5.	Keating analysis of speed and heading data for each VMS location provider, Bering Sea Pollock fishery, 2009 .....	11

Table 6.	Comparison of ABR and uncategorized Sea State Inc. assessments of closure zone violations for the 10% catch of vessel/days reviewed by ABR, Bering Sea Pollock fishery, 2009 .....	12
Table 7.	Comparison of ABR and categorized Sea State Inc. assessments of closure zone violations for the 10% catch of vessel/days reviewed by ABR, Bering Sea Pollock fishery, 2009 .....	12

### **LIST OF FIGURES**

Figure 1.	Closure violation assessment flowchart.....	13
Figure 2.	Location of fishing violation in closure region, 11 July 2009.....	14

### **LIST OF APPENDICES**

Appendix 1.	Audited hauls for the Bering Sea pollock fishery, 2009 .....	15
Appendix 2.	Selected trips for the closure zone audit, Bering Sea Pollock fishery, 2009.....	39
Appendix 3.	Logbook entry for violation, 11 July 2009.....	42
Appendix 4.	Candidate violations and verdicts by ABR and Sea State, Inc. for a selected subset of the Bering Sea pollock fishery, 2009 .....	43

## **BACKGROUND**

Closure zones were established for the Bering Sea pollock (*Theragra calcogramma*) fishery to ensure that fishing vessels would avoid areas with the potential for substantial bycatch of chinook and chum salmon (*Oncorhynchus tshawytscha* and *O. keta*). Vessel Monitoring System (VMS) units monitored the movement and location of fishing vessels, and fisheries observers and vessel logbooks recorded whether vessels were actively fishing. Sea State, Inc. establishes these closure zones and monitors vessel compliance of these zones using VMS data. In addition to these requirements, The National Oceanic and Atmospheric Administration (NOAA) Fisheries, Alaska Region, requires “an external audit designed to evaluate the accuracy of the approach used by Sea State to monitor compliance” be prepared for the pollock fishery. The audit, which NOAA required be based on an “[e]xamination of a randomly selected subset of vessel/days representing 10% of the catch” was conducted by ABR, Inc.—Environmental Research and Services (hereafter, ABR) for Sea State, Inc. This report presents the methods used to meet the selection criteria and the analytical methods and results of the audit.

## **STUDY OBJECTIVES**

The objectives of the audit were twofold: (1) assess the compliance of fishing vessels within salmon closure zones by sampling 10% of the 2009 fishing effort, and (2) compare the audit findings with Sea State’s conclusions regarding closure violations.

## **ASSUMPTIONS**

The audit is based upon the following assumptions, which we have not independently verified:

- 1) Observer data and vessel logbook records are always correct, and these sources never report non-fishing activity when fishing actually was occurring.
- 2) The following data provided by Sea State are free from errors: the table of VMS locations; the tables of observer data indicating haul start and stop times, and catch weights; and the table of fish ticket data indicating trip start and stop dates, and catch weights.

- 3) All coordinates specified in the VMS location tables and vessel closure announcements were in the same horizontal datum, namely World Geodetic System 1984 (WGS1984).

## **AUDIT METHODS**

### **SUBSET SELECTION**

The pollock fishery has three major sectors and we applied the 10% sampling criteria within each sector:

- Catcher/processors (CP)
- Catcher vessels supplying motherships (CVM)
- Catcher vessels supplying shoreside fish processors (CVS)

Although the NOAA Fisheries requirement stipulated that “vessel/days representing 10% of the catch” were to be audited, we did not interpret this literally because fish catches were not reported by day. Catch was reported for each haul and/or for each individual fishing trip. These catch totals might cover a portion of a day or portions of multiple days. We believe our sampling method, described below, was consistent with the intent of the permit stipulation.

Data collected by fisheries observers provided full coverage for the CP and CVM sectors, with start times, stop times, and catch weight for each haul. To randomly select vessel/days representing 10% of the catch (separately for each sector), individual hauls were selected without replacement until the total proportion of the catch exceeded 10% (Appendix 1).

Only partial fisheries-observer data were available for the CVS sector because smaller CVS vessels only had an observer 30% of the time. The fish-ticket data provided full coverage for the fishing effort of the CVS sector. Fish tickets reported the catch for whole fishing trips rather than by day or by haul. To randomly sample vessel/days representing 10% catch in the CVS sector, fishing trips were selected without replacement until the total proportion of the catch exceeded 10% (Appendix 2). For both observer and unobserved trips, data on vessel locations were assessed during hauls from 12:00 AM on the reported “trip start date” until 11:59:59 PM on the day after the reported “activity date.”

## IDENTIFICATION OF CANDIDATE CLOSURE ZONE VIOLATIONS

Before performing any analyses on the VMS location data, we verified the closure locations and tier status information by examining all closure notification memos and building closure polygons based on these memos. The dates that a closure applied for each Permit cooperative unit (coop) was also recorded from the original memos.

All VMS points (i.e., a 'point' is a specific latitude-longitude coordinate for the fishing vessel) were then passed through a series of geoprocessing operations and database filters to reduce the full set of data down to a limited number of potential closure zone violations (Figure 1).

First, the VMS points were intersected with the dataset of closure polygons (i.e., the geographic area of the closure zones) for all points that were within a closure when the closure was operational. This overlay excluded all points that were outside of closure zones, or were inside zones when the closure was not in effect. Each occurrence of a point within a closure zone resulted in an output table row linking the VMS point with the closure zone.

Next, these intersections of VMS points and closures were reduced by removing all intersections that weren't part of the 10% random sample of trips or hauls we generated earlier. The remaining point / closure intersections represent the list of 'candidate' (i.e. possible) violation points.

### BUFFER FILTER

There were four data providers for VMS locations, Faria, SkyMate / Nobletec , CLS America, and Thrane and Thrane. We only have information on the accuracy of the Thrane and Thrane system. For these locations we applied a two-stage buffering operation, forming a polygon from each point by adding and subtracting a pair of data transmission error terms ( $\pm 0.000333$  degrees for rounding errors and  $\pm 0.000667$  degrees for truncation errors) to each location, and then applying a second 30 meter buffer representing the positional accuracy of the satellite locations. For the other three systems, we had no information on how the data was transmitted, so we applied a simple 30 meter buffer around each point.

The buffered polygon boundaries around each location point were next compared to closure zone boundaries. When the buffer polygons were partially outside the closure zone of interest, the

corresponding points were flagged as “excluded by buffer” and these points were eliminated from further consideration.

Because of the uncertainty surrounding the different systems, we performed three analyses designed to characterize the quality of the data for each system. The first was a simple pass through the data to determine the speed and heading of each vessel from each point to the next point along their path, counting the number of points where speed exceeds a reasonable threshold (15 knots) for vessels in the fleet. We also performed a window analysis of the speed and heading data, calculating the standard deviation of speed and heading for moving windows of 16 points across each vessel track and averaging these deviations for all windows and all tracks that were part of each system. Finally, we used an approach used for characterizing animal telemetry data based on the angle between three consecutive points and the speeds traveled along each leg (Keating 1994) of that triangle. Points where the central angle is small (< 20 degrees in our analysis) and the speeds are high (> 5.6 knots) are much more likely to be inaccurate than those that don’t pass these thresholds.

The results of these analyses are not adequate to characterize the accuracy of individual points and were not used in filtering process, but they are useful in determining the data quality of each VMS provider.

#### TIER STATUS FILTER

Location points that still remained as candidate violations were then compared to the tier status reports to determine whether the vessel was exempt from the closure restrictions at the time of the candidate violation. Some closures applied to all vessels, regardless of tier status. Other closures were advisory only, and so technically did not apply to any vessels. The remainder of closures applied to only certain vessels—some vessels were exempt, based on past performance of their coop at avoiding salmon bycatch. Candidate violations that occurred when the vessel was exempt from closure restrictions were flagged as “exempt from closure due to tier status” and excluded from further consideration.

At this point, all remaining observations with observer data were considered closure zone violations. These observations were flagged as “possible violation.”



## SPEED FILTER

The remaining undetermined location points were all from unobserved CVS-sector fishing trips. Because no observer was reporting when the vessel was actually fishing, the travel routes to and from the fishing areas were included, although vessels are allowed to travel through closure zones as long as they are not fishing. To deal with this problem, we applied the simple speed threshold we developed for our assessment of the 2006 season (Macander and Dissing 2007). This is an automated way to filter out many points that clearly corresponded to rapid vessel travel, rather than potential fishing activity.

The speed filter applied several criteria to candidate violations to determine whether they could be excluded on the basis of vessel speed. Locational points met the speed test criteria and were excluded based on a high sustained speed, if they had 1) GPS coordinates, 2) at least 5-min elapsed time from the previous point, 3) at least 5-min elapsed time to the next point, 4) a calculated speed of  $>5.6$  knots from the previous point, and 5) a calculated speed of  $>5.6$  knots to the next point. Accuracy of the speed filter was able to predict fishing activity correctly for 99.83% of examined points in 2006 (Macander and Dissing 2007). The low failure rate of this method is acceptable, especially because visual examination of the points in question is likely to have a similar, if not higher, failure rate.

To develop the data necessary to apply the speed filter, the minimum sustained speed and the time interval to and from successive VMS locations was calculated for all of the selected CVS trips. Speeds were calculated from the difference in time and the distance between successive VMS locations. These values corresponded to a minimum speed because vessels traveling a zig-zag course between two observations would have a speed higher than the calculated speed. Candidate violations from the unobserved CVS sector that met our speed test criteria were flagged as “excluded due to high sustained speed.” These data were excluded from further consideration.

## VISUAL EXAMINATION

The remaining CVS-sector candidate violations were reviewed manually. Clearly, some of the points that did not pass the conservative speed test corresponded to non-fishing activity. For example, some points, which were just below the speed threshold, were along a straight line with several other points that did meet the criteria of the speed filter. Points that did not meet the speed

test, but which were determined to correspond to running out to the fishing ground (based on visual review), were flagged as “excluded by manual review: vessel running.” These data were excluded from further consideration.

## **VESSEL LOGBOOKS**

For the remaining CVS-sector candidate violations without observer data, logbook records were requested to determine whether the vessel was fishing at the time of the candidate violation. Points that were determined to correspond to non-fishing activity (based on review of logbooks) were flagged as “excluded based on vessel logbook review: vessel not fishing.” If the logbook was illegible, semi-legible, or inconsistent and a definitive determination could not be made, the point was flagged as “possible violation: logbook unclear.” Remaining points corresponded to fishing in closure zones, and were flagged as “possible violation: logbook indicates fishing in closure.”

Violations were reported to Sea State and the North Pacific Fisheries Management Council (NPFMC). A database containing the relevant attribute data for these violations, and maps for each violation, were provided to Sea State and NPFMC. The names of the vessels we identified as violations are not included in this draft report, because the vessels are entitled to appeal and the cases have not yet been officially resolved.

## **COMPARISON WITH SEA STATE DETERMINATIONS**

A comparison of the violations reported by ABR was made to those reported by Sea State. All of the location points that were part of ABR’s 10% selection were considered in this assessment.

## **RESULTS AND DISCUSSION**

### **IDENTIFICATION OF CANDIDATE CLOSURE ZONE VIOLATIONS**

#### **IDENTIFYING CANDIDATE VIOLATIONS**

The identification of candidate violations was entirely automated, without any interpretation or subjective thresholds (Table 1). This automated approach efficiently reduced the number of points requiring closer examination from 662,968 for the total fishery to the 559 locations that were assessed for potential closure zone violation.

## CATEGORIZING CANDIDATE VIOLATIONS

A small degree of subjectivity is involved in setting the buffer distances and vessel speed thresholds, as well as in the process of reviewing vessel tracks manually. We believe, however, that our approach was cautious, well-documented, and reasonable. The buffers, tier status, and speed threshold tests, as applied here, reduced the number of candidate violation points from 559 to 30 (Table 2).

These 30 points required manual examination. Visual examination to identify a vessel running and not fishing excluded an additional 27 points, leaving 3 points from three vessels. To determine the fishing status of these points, we requested the logbook for each. Two vessels were exonerated as the logbooks indicated they were not fishing while inside the salmon closure zone. These points were flagged as “excluded based on vessel logbook review: vessel not fishing.”

Logbooks for the third vessel (Appendix 3) showed that they were fishing inside the closure area, a potential violation (Figure 2). Sea State also identified this potential violation, but indicated they did not feel they had a strong enough case for this single-point violation. While we agree with the weakness of the case for this violation, due to the combination of uncertainty surrounding the VMS provider used on that vessel (SkyMate / Nobletec) and the nature of the ship track surrounding the violating point, according to our criteria this point represents a violation of the closure zone restriction on that date.

## ANALYSIS OF VMS LOCATION SYSTEMS

Tables 3, 4, and 5 show the results of our analysis of the accuracy of each of the VMS location providers. Of primary concern in these results is the high frequency of points from the SkyMate / Nobletec system where the speed calculated from one point to the next was greater than any of the vessels in the fleet could travel over the course of the typical VMS reporting interval (30 minutes). The SkyMate / Nobletec system also had the highest average standard deviation for both speed (which makes sense given the high speeds recorded) and heading when averaged over a complete set of moving windows through the vessel tracks. The Keating 1994 angle and speed analysis of all related sets of three points found such a high rate of inaccurate points for all VMS providers that we believe this technique is not applicable for this type of data. It may be that the VMS reporting interval is too large to assume three points in a series are along a similar path, or that the nature of fishing activities automatically yields a lot of suspect data with

this technique. We recommend the data providers be required to identify the accuracy of their systems, preferably in such a way that the accuracy of individual points can be assessed, and that the reporting interval be more frequent.

## **COMPARISON WITH SEA STATE DETERMINATIONS**

A complete list of candidate violations was compiled and for each candidate violation we identified, our verdict and the verdict of Sea State are listed (Appendix 4). A summary of the ABR and Sea State determinations (Tables 6 and 7) categorizes all verdicts. Table 6 shows all the candidate locations that were automatically excluded in Sea State's process, but which fell into one of our filters and were similarly excluded. Table 7 shows the combination of Sea State and ABR verdicts and how they were reached. We found that our verdicts agreed with Sea State's determination in all cases. Our 10% subsample did not identify any errors in Sea State's original determinations, and we did not further investigate locations outside of our subsample.

## **CONCLUSIONS**

Overall, ABR agreed with the determinations of Sea State for the 10% sample that we examined. Of points examined, our determination agreed with Sea State for all 27,329 candidate locations in our subsample. Minor discrepancies in the reason points were excluded were found, but this is because our filtering methods differed. Some points included in ABR's list of candidate violations were excluded from the Sea State analysis by preliminary filters based on other criteria, including instantaneous speed and tier status, and we were able to eliminate a lot of points from consideration using our speed filtering. Despite differences in methods, however, there was complete agreement by ABR and Sea State on final verdicts of all fishing.

With the exception of the closure zone data, which we reconstruct from the closure documents, ABR's assessment was based on our review and processing of data tables developed and provided by Sea State, Inc. As a result, our audit does not systematically assess any errors that might have occurred during Sea State's data compilation process. This could be addressed in the future by extending the compliance audit to include a systematic comparison of raw data (for example, fish tickets and VMS files) with Sea State's tables for a fraction of each table.

## LITERATURE CITED

Keating, K.A. 1994. An alternative index of satellite telemetry location error. *The Journal of Wildlife Management*. Vol. 58, No. 3, pp. 414-421.

Macander, M.J. and D, Dissing. 2007. Audit of salmon closure zone compliance monitoring Bering Sea pollock fishery. ABR, Inc.-Environmental Research & Services, Fairbanks, AK, 99708. pp. 48.

Table 1. Number of vessel locations considered at different stages of the closure violation audit, Bering Sea pollock fishery, 2009.

	Catcher/Processor (CP)	Catcher Vessel/ Mothership (CVM)	Catcher Vessel/ Shoreside, no Observer (CVS_NO)	Catcher Vessel/ Shoreside, Observer (CVS_O)	Total
All VMS Locations		(Not separated by sector)			662,968
Select 10% of Hauls or Trips	3,364	1,994	18,436	3,480	27,274
Points in Closure when Closed (Candidate Violations)	1	0	486	72	559
Violations	0	0	1	0	1

Table 2. Results of ABR review of candidate violations of the closure zones, Bering Sea pollock fishery, 2009.

	Catcher/Processor (CP)	Catcher Vessel/ Mothership (CVM)	Catcher Vessel/ Shoreside, no Observer (CVS_NO)	Catcher Vessel/ Shoreside, Observer (CVS_O)	Total
Candidate Violations	1	0	486	72	559
Excluded by Buffer	0	0	7	0	7
Excluded based on tier status	1	0	319	72	392
Excluded by speed filter	n/a	n/a	130	n/a	130
Excluded by visual review	n/a	n/a	27	n/a	27
Excluded by review of vessel logbook	n/a	n/a	2	n/a	2
Violations	0	0	1	0	1

Table 3. Speed analysis of four different VMS location providers, Bering Sea Pollock fishery, 2009.

VMS location system	Total locations	Locations with unlikely speeds	Frequency (%)
Faria	15,412	3	0.02
CLS America	34,354	4	0.01
SkyMate / Nobletec	74,041	707	0.95
Thrane and Thrane	363,916	99	0.03

Table 4. Standard deviation analysis of speed and heading for data windows along vessel tracks for each VMS location provider, Bering Sea Pollock fishery, 2009.

VMS location system	Total locations	Average standard deviation, Speed (knots)	Average standard deviation, Heading (degrees)
Faria	15,412	1.42	44.2
CLS America	34,354	1.40	59.6
SkyMate / Nobletec	74,041	2.22	75.8
Thrane and Thrane	363,916	1.53	61.4

Table 5. Keating analysis of speed and heading data for each VMS location provider, Bering Sea Pollock fishery, 2009.

VMS location system	Total locations	Locations classified as inaccurate	Frequency (%)
Faria	15,129	2,434	16.1
CLS America	32,804	5,052	15.4
SkyMate / Nobletec	65,842	4,552	6.9
Thrane and Thrane	349,126	39,911	11.4

Table 6. Comparison of ABR and uncategorized Sea State Inc. assessments of closure zone violations for the 10% catch of vessel/days reviewed by ABR, Bering Sea Pollock fishery, 2009.

ABR Verdict	Sea State Inc. Verdict	Number of Locations (Points)	Verdict in agreement?
Excluded: buffer	Excluded	4	Yes
Excluded: manual review, running	Excluded	8	Yes
Excluded: high sustained speed	Excluded	106	Yes
Excluded: tier status	Excluded	350	Yes
	Total Locations:	468	

Table 7. Comparison of ABR and categorized Sea State Inc. assessments of closure zone violations for the 10% catch of vessel/days reviewed by ABR, Bering Sea Pollock fishery, 2009.

ABR Verdict	Sea State Inc. Verdict	Number of Locations (Points)	Verdict in agreement?
Excluded: buffer	Excluded: manual review, running	3	Yes
Excluded: high sustained speed	Excluded: manual review, running	11	Yes
Excluded: high sustained speed	Excluded: logbook review, not fishing	7	Yes
Excluded: high sustained speed	Excluded: Observed trip, not fishing	6	Yes
Excluded: manual review, running	Excluded: Observed trip, not fishing	1	Yes
Excluded: manual review, running	Excluded: manual review, running	16	Yes
Excluded: manual review, running	Excluded: logbook review, not fishing	2	Yes
Excluded: tier status	Excluded: tier status	42	Yes
Excluded: logbook review, not fishing	Excluded: logbook review, not fishing	2	Yes
Possible violation	Possible violation	1	Yes
	Total Locations:	91	



# Closure Violation Assessment Flowchart

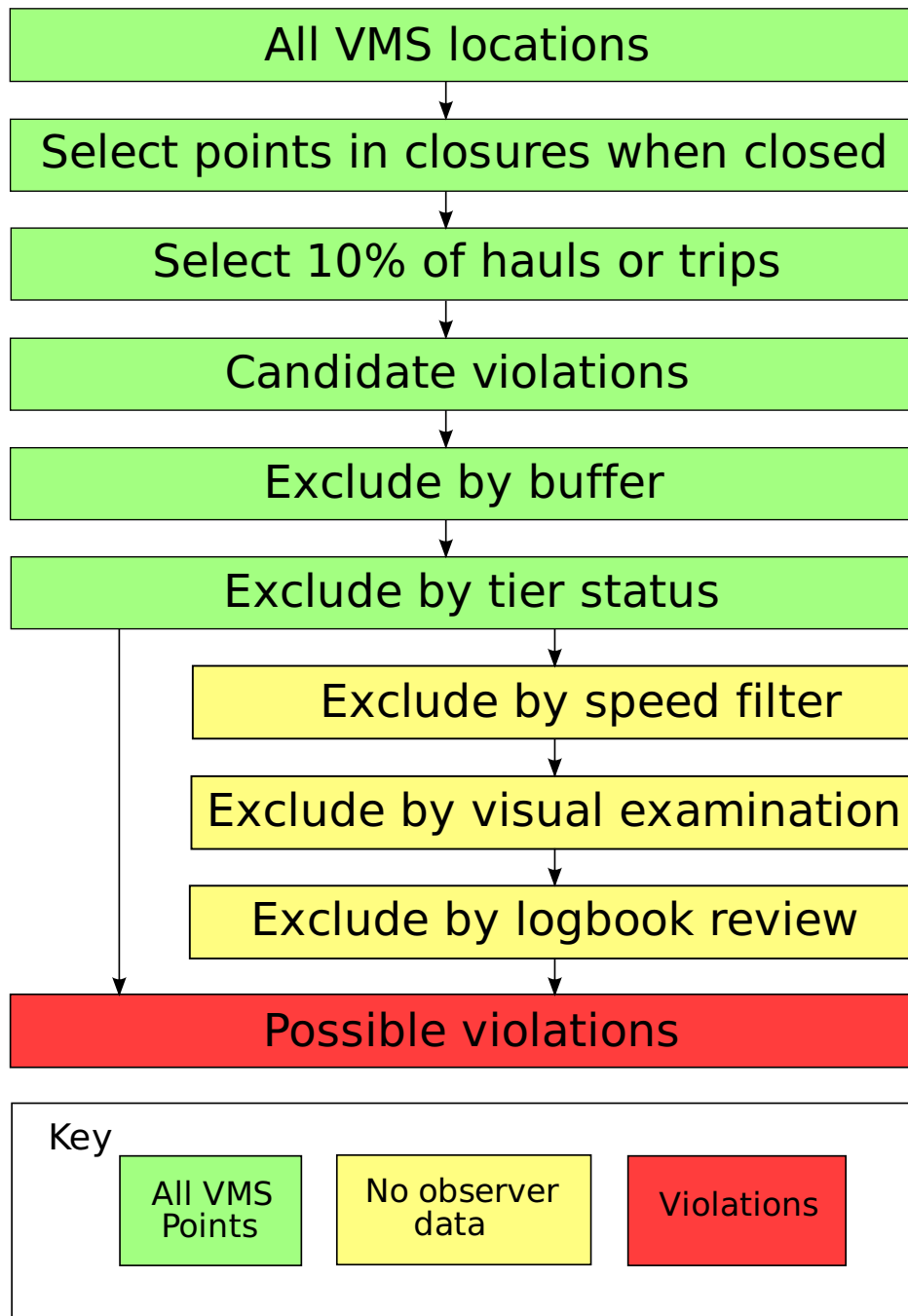


Figure 1. Closure violation assessment flowchart.

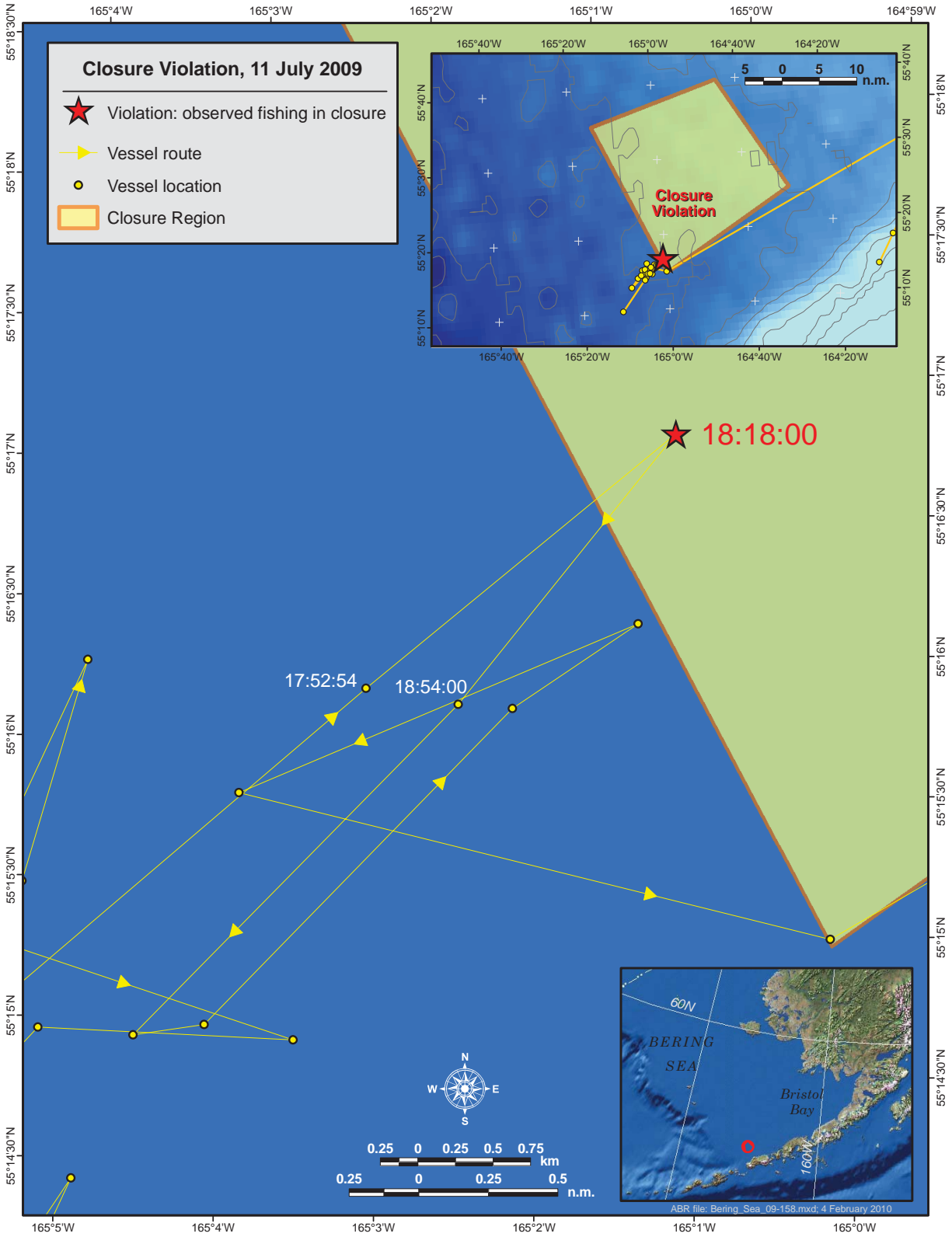


Figure 2. Location of fishing violation in closure region, 11 July 2009.

Appendix 1. Audited hauls for the Bering Sea pollock fishery, 2009.

Sector	Vessel	Start of Haul	End of Haul	Pollock Weight (Metric tons)
CVS_O	Alaskan Command	02/28/2009 01:57	02/28/2009 09:14	43.45
CVS_O	Alaskan Command	02/28/2009 20:05	03/01/2009 08:12	77.09
CVS_O	Alaskan Command	03/02/2009 00:52	03/02/2009 08:49	49.50
CVS_O	Alaskan Command	03/02/2009 16:12	03/02/2009 21:44	39.66
CVS_O	Alaskan Command	03/02/2009 23:45	03/03/2009 08:38	135.19
CVS_O	Alaskan Command	03/23/2009 00:30	03/23/2009 09:46	0.00
CVS_O	Alaskan Command	03/23/2009 13:07	03/23/2009 20:20	17.09
CVS_O	Alaskan Command	03/24/2009 11:45	03/24/2009 16:58	92.07
CVS_O	Alaskan Command	03/24/2009 18:53	03/25/2009 07:15	248.56
CVS_O	Alaskan Command	06/25/2009 04:06	06/25/2009 08:41	58.71
CVS_O	Alaskan Command	06/25/2009 12:45	06/25/2009 21:38	78.06
CVS_O	Alaskan Command	06/26/2009 00:28	06/26/2009 08:53	132.32
CVS_O	Alaskan Command	06/26/2009 10:56	06/26/2009 19:10	127.76
CVS_O	Alaskan Command	06/26/2009 21:32	06/27/2009 07:35	186.73
CVS_O	Alaskan Command	07/06/2009 22:47	07/07/2009 08:53	78.22
CVS_O	Alaskan Command	07/07/2009 10:45	07/07/2009 20:19	136.02
CVS_O	Alaskan Command	07/07/2009 23:37	07/08/2009 12:04	57.43
CVS_O	Alaskan Command	07/08/2009 13:49	07/08/2009 22:27	97.61
CVS_O	Alaskan Command	07/09/2009 00:02	07/09/2009 08:40	71.70
CVS_O	Alaskan Command	07/09/2009 10:17	07/09/2009 12:41	126.75
CVS_O	Alaskan Command	08/05/2009 01:20	08/05/2009 08:29	229.54
CVS_O	Alaskan Command	08/05/2009 14:31	08/05/2009 15:27	50.00
CP	Alaska Ocean	01/25/2009 03:40	01/25/2009 06:40	52.60
CP	Alaska Ocean	01/25/2009 07:30	01/25/2009 11:20	37.91
CP	Alaska Ocean	01/26/2009 03:20	01/26/2009 05:25	27.12
CP	Alaska Ocean	01/27/2009 10:15	01/27/2009 11:50	67.91
CP	Alaska Ocean	01/27/2009 21:40	01/28/2009 00:05	34.81
CP	Alaska Ocean	01/28/2009 01:10	01/28/2009 03:20	27.51
CP	Alaska Ocean	01/28/2009 08:30	01/28/2009 10:00	11.03
CP	Alaska Ocean	01/28/2009 18:05	01/28/2009 22:15	44.66
CP	Alaska Ocean	01/31/2009 16:00	01/31/2009 21:15	69.77
CP	Alaska Ocean	02/01/2009 12:15	02/01/2009 16:35	87.08
CP	Alaska Ocean	02/03/2009 00:50	02/03/2009 09:20	111.05
CP	Alaska Ocean	02/04/2009 02:55	02/04/2009 09:15	54.37
CP	Alaska Ocean	02/05/2009 06:30	02/05/2009 12:00	52.53
CP	Alaska Ocean	02/07/2009 20:15	02/07/2009 23:30	50.48
CP	Alaska Ocean	02/08/2009 06:15	02/08/2009 11:00	144.96
CP	Alaska Ocean	02/13/2009 22:25	02/14/2009 02:20	157.49
CP	Alaska Ocean	02/16/2009 18:15	02/16/2009 20:50	12.90
CP	Alaska Ocean	02/18/2009 08:35	02/18/2009 13:25	58.04
CP	Alaska Ocean	02/20/2009 05:15	02/20/2009 11:35	80.09
CP	Alaska Ocean	02/20/2009 12:35	02/20/2009 16:15	52.82
CP	Alaska Ocean	02/27/2009 10:00	02/27/2009 14:00	1.29
CP	Alaska Ocean	02/27/2009 23:20	02/28/2009 04:00	76.81
CP	Alaska Ocean	03/02/2009 20:20	03/03/2009 00:25	52.55
CP	Alaska Ocean	03/04/2009 19:10	03/04/2009 22:10	92.11
CP	Alaska Ocean	03/07/2009 09:00	03/07/2009 14:50	90.60
CP	Alaska Ocean	03/10/2009 23:55	03/11/2009 01:40	111.86
CP	Alaska Ocean	03/12/2009 03:25	03/12/2009 06:40	88.79
CP	Alaska Ocean	03/14/2009 07:50	03/14/2009 10:35	47.78

Appendix 1. Continued.

Sector	Vessel	Start of Haul	End of Haul	Pollock Weight (Metric tons)
CP	Alaska Ocean	03/15/2009 16:20	03/15/2009 18:55	170.34
CP	Alaska Ocean	03/17/2009 00:50	03/17/2009 04:20	112.82
CP	Alaska Ocean	06/10/2009 23:55	06/11/2009 05:15	114.08
CP	Alaska Ocean	06/14/2009 07:15	06/14/2009 12:45	115.88
CP	Alaska Ocean	06/15/2009 10:30	06/15/2009 14:10	104.95
CP	Alaska Ocean	06/16/2009 14:05	06/16/2009 18:15	65.82
CP	Alaska Ocean	06/17/2009 22:00	06/17/2009 23:50	16.86
CP	Alaska Ocean	06/21/2009 23:10	06/22/2009 00:50	10.70
CP	Alaska Ocean	06/22/2009 09:35	06/22/2009 12:45	77.30
CP	Alaska Ocean	06/23/2009 21:50	06/24/2009 02:00	115.15
CP	Alaska Ocean	06/24/2009 14:45	06/24/2009 16:50	9.98
CP	Alaska Ocean	06/26/2009 22:00	06/27/2009 03:55	135.94
CP	Alaska Ocean	06/28/2009 17:00	06/28/2009 19:25	10.16
CP	Alaska Ocean	06/29/2009 09:00	06/29/2009 12:00	73.84
CP	Alaska Ocean	06/29/2009 12:30	06/29/2009 16:15	103.70
CP	Alaska Ocean	07/08/2009 07:50	07/08/2009 10:20	67.94
CP	Alaska Ocean	07/08/2009 18:50	07/09/2009 01:10	83.94
CP	Alaska Ocean	07/10/2009 18:50	07/11/2009 00:10	82.09
CP	Alaska Ocean	07/13/2009 12:30	07/13/2009 13:30	71.28
CP	Alaska Ocean	07/14/2009 08:45	07/14/2009 11:00	99.30
CP	Alaska Ocean	07/17/2009 00:50	07/17/2009 03:35	109.73
CP	Alaska Ocean	07/18/2009 00:50	07/18/2009 01:20	0.35
CP	Alaska Ocean	07/19/2009 03:00	07/19/2009 05:50	82.71
CP	Alaska Ocean	07/21/2009 09:55	07/21/2009 13:55	83.67
CP	Alaska Ocean	07/22/2009 09:40	07/22/2009 17:30	78.12
CP	Alaska Ocean	07/24/2009 16:25	07/24/2009 18:10	156.78
CP	Alaska Ocean	08/01/2009 13:00	08/01/2009 14:50	108.92
CP	Alaska Ocean	08/01/2009 15:45	08/01/2009 17:45	148.80
CP	Alaska Ocean	08/02/2009 03:05	08/02/2009 05:40	129.90
CP	Alaska Ocean	08/05/2009 15:55	08/05/2009 18:55	10.52
CP	Alaska Ocean	08/08/2009 17:50	08/08/2009 22:40	121.65
CP	Alaska Ocean	08/12/2009 22:25	08/13/2009 00:45	88.52
CVS_O	Aldebaran	01/29/2009 19:20	01/30/2009 08:08	19.58
CVS_O	Aldebaran	01/30/2009 13:45	01/30/2009 18:00	3.23
CVS_O	Aldebaran	08/20/2009 16:25	08/20/2009 22:35	2.75
CVS_O	Aldebaran	08/21/2009 00:05	08/21/2009 10:15	43.85
CVS_O	Aldebaran	08/21/2009 13:55	08/21/2009 22:00	5.03
CVS_O	Aldebaran	08/22/2009 01:05	08/22/2009 10:00	29.97
CVS_O	Aldebaran	08/22/2009 23:40	08/23/2009 08:15	29.47
CVM	Aleutian Challenger	01/21/2009 16:00	01/21/2009 20:45	26.97
CVM	Aleutian Challenger	02/09/2009 23:15	02/10/2009 10:15	37.57
CVM	Aleutian Challenger	02/11/2009 17:15	02/12/2009 03:50	44.35
CVM	Aleutian Challenger	06/27/2009 03:40	06/27/2009 11:00	63.95
CVM	Aleutian Challenger	07/01/2009 13:30	07/02/2009 00:30	51.57
CVM	Aleutian Challenger	07/02/2009 01:20	07/02/2009 08:40	15.33
CVM	Aleutian Challenger	07/06/2009 12:00	07/06/2009 23:00	55.30
CVM	Aleutian Challenger	07/13/2009 16:30	07/13/2009 23:59	33.20
CVM	Aleutian Challenger	07/19/2009 11:40	07/19/2009 17:50	62.65
CVM	Aleutian Challenger	07/22/2009 07:00	07/22/2009 16:15	49.92
CVM	Aleutian Challenger	07/25/2009 00:00	07/25/2009 10:45	44.38

Appendix 1. Continued.

Sector	Vessel	Start of Haul	End of Haul	Pollock Weight (Metric tons)
CVM	Aleutian Challenger	07/25/2009 11:45	07/25/2009 16:15	67.56
CVM	Alyeska	01/28/2009 21:00	01/29/2009 07:40	52.72
CVM	Alyeska	01/31/2009 01:35	01/31/2009 12:00	53.40
CVM	Alyeska	02/08/2009 16:20	02/09/2009 01:00	39.81
CVM	Alyeska	02/12/2009 01:40	02/12/2009 17:00	48.85
CVM	Alyeska	02/19/2009 04:30	02/19/2009 11:30	54.69
CVM	American Beauty	02/18/2009 21:50	02/19/2009 02:10	57.51
CVM	American Beauty	02/22/2009 16:22	02/22/2009 23:00	60.62
CVM	American Beauty	02/23/2009 02:40	02/23/2009 07:05	54.68
CVM	American Beauty	02/28/2009 05:30	02/28/2009 16:45	34.25
CVM	American Beauty	06/20/2009 12:10	06/20/2009 15:05	60.52
CVM	American Beauty	08/09/2009 15:55	08/10/2009 03:30	54.94
CVM	American Beauty	08/27/2009 01:00	08/27/2009 05:30	56.14
CVM	American Beauty	08/29/2009 12:10	08/30/2009 02:50	45.74
CVS_O	American Eagle	03/02/2009 21:00	03/02/2009 23:30	17.16
CP	American Triumph	01/24/2009 18:50	01/24/2009 23:20	47.83
CP	American Triumph	01/27/2009 11:20	01/27/2009 13:30	109.90
CP	American Triumph	01/29/2009 10:00	01/29/2009 16:45	50.02
CP	American Triumph	02/01/2009 11:30	02/01/2009 14:20	87.95
CP	American Triumph	02/12/2009 03:40	02/12/2009 06:00	77.10
CP	American Triumph	02/12/2009 07:00	02/12/2009 09:55	36.86
CP	American Triumph	02/16/2009 15:40	02/16/2009 21:15	66.77
CP	American Triumph	03/03/2009 06:20	03/03/2009 13:00	59.24
CP	American Triumph	03/05/2009 00:10	03/05/2009 03:50	69.90
CP	American Triumph	03/06/2009 06:30	03/06/2009 13:30	34.20
CP	American Triumph	03/16/2009 22:30	03/17/2009 08:10	81.08
CP	American Triumph	07/02/2009 09:10	07/02/2009 12:40	148.71
CP	American Triumph	07/06/2009 14:20	07/06/2009 15:50	6.62
CP	American Triumph	07/10/2009 23:00	07/11/2009 00:15	10.75
CP	American Triumph	07/12/2009 17:40	07/12/2009 20:20	182.27
CP	American Triumph	07/14/2009 04:00	07/14/2009 06:45	93.76
CP	American Triumph	07/21/2009 16:15	07/21/2009 19:35	137.96
CP	American Triumph	07/22/2009 02:40	07/22/2009 07:20	78.62
CP	American Triumph	07/24/2009 00:35	07/24/2009 06:00	63.77
CP	American Triumph	07/24/2009 08:20	07/24/2009 10:00	85.13
CP	American Triumph	07/26/2009 12:05	07/26/2009 13:15	140.39
CP	American Triumph	07/28/2009 11:25	07/28/2009 13:25	49.24
CP	American Triumph	07/30/2009 03:15	07/30/2009 08:05	170.23
CP	American Triumph	07/31/2009 19:45	07/31/2009 22:35	95.16
CP	American Triumph	08/07/2009 13:45	08/07/2009 17:10	109.23
CP	American Triumph	08/09/2009 15:05	08/09/2009 16:45	127.11
CP	American Triumph	08/10/2009 17:30	08/10/2009 20:10	31.52
CP	American Triumph	08/17/2009 01:10	08/17/2009 06:10	103.28
CP	American Triumph	08/22/2009 20:40	08/22/2009 23:20	36.95
CP	American Triumph	08/24/2009 18:25	08/24/2009 23:15	76.30
CP	American Triumph	08/25/2009 11:50	08/25/2009 16:25	58.77
CP	American Triumph	09/01/2009 11:00	09/01/2009 15:00	29.26
CP	American Triumph	09/02/2009 13:15	09/02/2009 20:10	96.26
CP	American Triumph	09/06/2009 02:15	09/06/2009 09:30	48.41
CP	American Triumph	09/16/2009 06:40	09/16/2009 11:40	114.00

Appendix 1. Continued.

Sector	Vessel	Start of Haul	End of Haul	Pollock Weight (Metric tons)
CP	American Triumph	09/16/2009 16:50	09/16/2009 23:30	103.06
CP	American Triumph	09/17/2009 11:40	09/17/2009 15:00	96.47
CP	American Triumph	09/20/2009 14:05	09/20/2009 19:25	52.16
CVS_O	Arctic Explorer	01/22/2009 11:20	01/22/2009 20:00	11.25
CVS_O	Arctic Explorer	01/23/2009 00:30	01/23/2009 09:15	68.71
CVS_O	Arctic Explorer	01/23/2009 10:35	01/23/2009 14:50	59.97
CVS_O	Arctic Explorer	01/23/2009 15:35	01/23/2009 21:30	52.68
CVS_O	Arctic Explorer	01/23/2009 22:30	01/24/2009 06:15	48.08
CVS_O	Arctic Explorer	01/24/2009 08:00	01/24/2009 15:15	5.67
CVS_O	Arctic Explorer	02/06/2009 20:30	02/07/2009 10:00	88.43
CVS_O	Arctic Explorer	02/07/2009 11:50	02/07/2009 18:45	29.17
CVS_O	Arctic Explorer	02/07/2009 22:50	02/08/2009 07:35	64.12
CVS_O	Arctic Explorer	02/08/2009 09:30	02/08/2009 10:00	0.84
CVS_O	Arctic Explorer	02/08/2009 22:00	02/09/2009 03:35	17.30
CVS_O	Arctic Explorer	07/04/2009 23:23	07/05/2009 08:00	18.06
CVS_O	Arctic Explorer	07/05/2009 10:00	07/05/2009 15:30	67.90
CVS_O	Arctic Explorer	07/05/2009 16:30	07/05/2009 19:15	58.87
CVS_O	Arctic Explorer	07/05/2009 20:15	07/06/2009 00:50	44.81
CVS_O	Arctic Explorer	07/06/2009 02:35	07/06/2009 06:30	5.32
CVS_O	Arctic Explorer	07/06/2009 08:30	07/06/2009 15:00	94.46
CVS_O	Arctic Explorer	07/24/2009 09:55	07/24/2009 11:15	104.79
CVS_O	Arctic Explorer	07/24/2009 13:00	07/24/2009 15:00	100.03
CVS_O	Arctic Explorer	07/24/2009 16:30	07/24/2009 17:10	109.56
CP	Arctic Fjord	01/26/2009 04:40	01/26/2009 10:40	45.75
CP	Arctic Fjord	01/26/2009 18:00	01/27/2009 01:30	86.21
CP	Arctic Fjord	01/27/2009 02:30	01/27/2009 08:30	51.09
CP	Arctic Fjord	02/02/2009 12:45	02/02/2009 18:35	34.09
CP	Arctic Fjord	02/04/2009 01:00	02/04/2009 05:30	25.21
CP	Arctic Fjord	02/10/2009 08:15	02/10/2009 15:05	18.68
CP	Arctic Fjord	02/10/2009 22:50	02/11/2009 07:10	78.72
CP	Arctic Fjord	02/11/2009 21:45	02/11/2009 23:15	107.17
CP	Arctic Fjord	02/13/2009 07:50	02/13/2009 13:30	56.55
CP	Arctic Fjord	02/17/2009 05:35	02/17/2009 08:30	96.54
CP	Arctic Fjord	02/19/2009 09:00	02/19/2009 10:30	112.93
CP	Arctic Fjord	02/24/2009 20:50	02/24/2009 22:40	112.39
CP	Arctic Fjord	02/28/2009 20:40	02/28/2009 22:40	63.75
CP	Arctic Fjord	03/10/2009 15:40	03/10/2009 17:00	117.75
CP	Arctic Fjord	03/11/2009 23:40	03/12/2009 00:45	85.67
CP	Arctic Fjord	03/13/2009 05:05	03/13/2009 08:05	92.46
CP	Arctic Fjord	03/18/2009 03:15	03/18/2009 06:15	93.10
CP	Arctic Fjord	03/27/2009 00:20	03/27/2009 05:20	105.89
CP	Arctic Fjord	03/29/2009 09:00	03/29/2009 09:45	118.92
CP	Arctic Fjord	06/11/2009 05:10	06/11/2009 11:00	40.04
CP	Arctic Fjord	06/13/2009 08:00	06/13/2009 12:00	99.51
CP	Arctic Fjord	06/18/2009 00:25	06/18/2009 02:40	102.35
CP	Arctic Fjord	06/18/2009 16:50	06/19/2009 00:15	85.65
CP	Arctic Fjord	06/19/2009 19:25	06/19/2009 21:15	87.20
CP	Arctic Fjord	06/29/2009 14:45	06/29/2009 18:25	88.65
CP	Arctic Fjord	06/29/2009 19:20	06/30/2009 00:20	84.17
CP	Arctic Fjord	07/04/2009 03:05	07/04/2009 10:05	97.22

Appendix 1. Continued.

Sector	Vessel	Start of Haul	End of Haul	Pollock Weight (Metric tons)
CP	Arctic Fjord	07/09/2009 05:55	07/09/2009 12:10	73.81
CP	Arctic Fjord	07/11/2009 03:10	07/11/2009 07:10	57.58
CP	Arctic Fjord	07/11/2009 17:30	07/11/2009 20:40	100.36
CP	Arctic Fjord	07/15/2009 10:00	07/15/2009 14:45	26.19
CP	Arctic Fjord	07/17/2009 15:05	07/17/2009 21:05	84.57
CP	Arctic Fjord	07/23/2009 21:25	07/23/2009 23:55	100.10
CP	Arctic Fjord	07/24/2009 13:15	07/24/2009 15:15	123.79
CP	Arctic Fjord	07/29/2009 21:10	07/30/2009 01:35	108.72
CP	Arctic Fjord	07/30/2009 04:10	07/30/2009 05:25	94.27
CP	Arctic Fjord	08/02/2009 23:00	08/03/2009 03:00	65.61
CP	Arctic Fjord	08/16/2009 03:00	08/16/2009 05:00	73.96
CP	Arctic Fjord	08/18/2009 01:25	08/18/2009 06:25	83.21
CP	Arctic Fjord	08/19/2009 17:30	08/19/2009 22:45	90.72
CP	Arctic Fjord	09/09/2009 16:35	09/10/2009 00:30	76.82
CP	Arctic Storm	01/20/2009 19:10	01/20/2009 22:10	85.93
CP	Arctic Storm	01/21/2009 00:05	01/21/2009 04:45	96.76
CP	Arctic Storm	01/25/2009 01:45	01/25/2009 12:55	73.68
CP	Arctic Storm	01/25/2009 23:25	01/26/2009 03:30	84.26
CP	Arctic Storm	01/26/2009 19:25	01/27/2009 02:10	102.36
CP	Arctic Storm	01/31/2009 14:45	01/31/2009 20:30	20.28
CP	Arctic Storm	01/31/2009 22:05	02/01/2009 02:30	46.51
CP	Arctic Storm	02/09/2009 06:30	02/09/2009 10:05	62.04
CP	Arctic Storm	02/22/2009 06:00	02/22/2009 11:50	49.94
CP	Arctic Storm	02/26/2009 11:15	02/26/2009 21:15	64.74
CP	Arctic Storm	03/04/2009 06:10	03/04/2009 06:45	168.10
CP	Arctic Storm	03/04/2009 23:40	03/05/2009 00:50	124.40
CP	Arctic Storm	03/07/2009 21:00	03/07/2009 23:30	104.65
CP	Arctic Storm	03/10/2009 19:30	03/10/2009 20:50	129.00
CP	Arctic Storm	03/12/2009 22:30	03/13/2009 00:30	105.54
CP	Arctic Storm	03/19/2009 02:50	03/19/2009 07:50	127.12
CP	Arctic Storm	03/24/2009 11:15	03/24/2009 12:20	81.62
CP	Arctic Storm	06/11/2009 03:30	06/11/2009 08:05	117.80
CP	Arctic Storm	06/11/2009 23:45	06/12/2009 02:45	113.16
CP	Arctic Storm	06/12/2009 20:45	06/12/2009 23:15	115.14
CP	Arctic Storm	06/13/2009 04:55	06/13/2009 07:30	68.26
CP	Arctic Storm	06/18/2009 01:20	06/18/2009 05:10	68.90
CP	Arctic Storm	06/29/2009 21:30	06/30/2009 01:15	39.54
CP	Arctic Storm	07/02/2009 11:00	07/02/2009 13:30	6.59
CP	Arctic Storm	07/16/2009 14:30	07/16/2009 17:40	128.30
CP	Arctic Storm	07/17/2009 21:45	07/18/2009 01:35	38.40
CP	Arctic Storm	07/20/2009 06:30	07/20/2009 14:15	87.87
CP	Arctic Storm	07/21/2009 23:30	07/22/2009 05:45	72.27
CP	Arctic Storm	07/22/2009 14:45	07/22/2009 21:35	133.19
CP	Arctic Storm	07/23/2009 20:10	07/23/2009 20:40	144.22
CP	Arctic Storm	07/28/2009 04:30	07/28/2009 10:40	43.16
CP	Arctic Storm	08/07/2009 15:05	08/07/2009 20:00	112.53
CP	Arctic Storm	08/13/2009 10:00	08/13/2009 14:30	126.89
CP	Arctic Storm	08/14/2009 13:10	08/14/2009 20:30	77.32
CP	Arctic Storm	08/15/2009 03:30	08/15/2009 05:30	96.64
CP	Arctic Storm	08/21/2009 19:30	08/21/2009 23:10	126.55

Appendix 1. Continued.

Sector	Vessel	Start of Haul	End of Haul	Pollock Weight (Metric tons)
CP	Arctic Storm	08/22/2009 01:10	08/22/2009 05:00	119.67
CP	Arctic Storm	08/24/2009 11:35	08/24/2009 20:30	189.92
CP	Arctic Storm	08/24/2009 22:00	08/25/2009 01:50	120.04
CP	Arctic Storm	08/25/2009 02:30	08/25/2009 11:55	131.01
CP	Arctic Storm	08/28/2009 22:30	08/29/2009 00:30	6.83
CP	Arctic Storm	08/29/2009 13:50	08/29/2009 16:10	117.99
CVS_O	Arctic Wind	07/01/2009 05:45	07/01/2009 14:45	9.64
CVS_O	Arctic Wind	07/02/2009 00:15	07/02/2009 05:30	98.53
CVS_O	Arctic Wind	07/02/2009 11:30	07/02/2009 17:45	9.86
CVS_O	Arctic Wind	07/02/2009 23:45	07/03/2009 01:00	9.96
CVS_O	Arctic Wind	07/03/2009 01:45	07/03/2009 05:45	24.89
CVS_O	Arctic Wind	07/03/2009 17:45	07/04/2009 00:05	99.54
CVS_O	Arcturus	02/02/2009 05:45	02/02/2009 08:45	22.86
CVS_O	Auriga	03/15/2009 17:40	03/15/2009 22:00	129.93
CVS_O	Auriga	03/15/2009 22:15	03/16/2009 00:55	142.18
CVS_O	Auriga	03/16/2009 02:30	03/16/2009 05:00	184.38
CVS_O	Auriga	03/16/2009 06:40	03/16/2009 09:30	100.30
CVS_O	Auriga	06/15/2009 16:05	06/15/2009 21:30	71.11
CVS_O	Auriga	06/16/2009 03:45	06/16/2009 14:50	151.70
CVS_O	Auriga	06/16/2009 17:15	06/17/2009 00:05	121.18
CVS_O	Auriga	06/17/2009 01:35	06/17/2009 16:45	180.15
CVS_O	Aurora	08/03/2009 03:10	08/03/2009 10:30	95.27
CVS_O	Aurora	08/03/2009 12:15	08/03/2009 13:45	79.83
CVS_O	Aurora	08/03/2009 15:30	08/03/2009 16:50	69.72
CVS_O	Aurora	08/03/2009 22:10	08/04/2009 09:50	187.46
CVS_O	Aurora	08/04/2009 12:10	08/04/2009 17:30	112.47
CVS_O	Aurora	08/13/2009 16:10	08/13/2009 22:45	108.20
CVS_O	Aurora	08/14/2009 00:15	08/14/2009 04:25	199.24
CVS_O	Aurora	08/14/2009 06:05	08/14/2009 16:30	73.55
CVS_O	Aurora	08/14/2009 17:35	08/15/2009 03:00	29.64
CVS_O	Bering Rose	07/28/2009 20:20	07/28/2009 21:20	0.29
CVS_O	Bering Rose	07/29/2009 15:30	07/29/2009 16:30	166.61
CVS_O	Bering Rose	07/29/2009 18:40	07/29/2009 19:30	166.61
CVS_O	Bering Rose	07/29/2009 20:35	07/29/2009 21:10	34.30
CVS_O	Bristol Explorer	02/19/2009 20:28	02/20/2009 08:21	80.35
CVS_O	Bristol Explorer	02/20/2009 09:41	02/20/2009 13:49	16.64
CVS_O	Bristol Explorer	02/20/2009 14:51	02/20/2009 20:02	7.44
CVS_O	Bristol Explorer	02/20/2009 21:31	02/21/2009 02:21	57.11
CVS_O	Bristol Explorer	02/21/2009 03:18	02/21/2009 10:00	23.64
CVS_O	Bristol Explorer	03/03/2009 03:35	03/03/2009 07:59	116.00
CVS_O	Bristol Explorer	03/03/2009 18:14	03/03/2009 19:07	118.74
CVS_O	Bristol Explorer	03/03/2009 20:28	03/03/2009 23:59	113.07
CVS_O	Bristol Explorer	03/20/2009 06:10	03/20/2009 09:50	103.13
CVS_O	Bristol Explorer	03/20/2009 11:30	03/20/2009 15:30	107.47
CVS_O	Bristol Explorer	03/20/2009 17:30	03/20/2009 21:10	32.32
CVS_O	Bristol Explorer	03/21/2009 02:00	03/21/2009 08:10	119.45
CVS_O	Caitlin Ann	08/09/2009 01:45	08/09/2009 11:50	76.21
CVS_O	Caitlin Ann	08/09/2009 13:55	08/09/2009 21:00	13.15
CVS_O	Caitlin Ann	08/09/2009 22:00	08/10/2009 09:15	32.91
CVS_O	Caitlin Ann	08/10/2009 14:10	08/10/2009 16:00	52.26



Appendix 1. Continued.

Sector	Vessel	Start of Haul	End of Haul	Pollock Weight (Metric tons)
CVS_O	Caitlin Ann	08/10/2009 17:05	08/10/2009 20:30	78.92
CVS_O	Caitlin Ann	08/10/2009 22:00	08/11/2009 00:45	30.69
CVM	California Horizon	03/07/2009 00:15	03/07/2009 00:50	43.14
CVM	California Horizon	06/21/2009 18:10	06/21/2009 22:30	50.07
CVM	California Horizon	06/22/2009 11:52	06/22/2009 15:50	60.63
CVM	California Horizon	07/07/2009 19:45	07/08/2009 08:35	18.55
CVM	California Horizon	07/10/2009 11:22	07/10/2009 13:00	55.84
CVS_O	Commodore	02/19/2009 12:10	02/19/2009 15:40	88.03
CVS_O	Commodore	02/19/2009 17:40	02/20/2009 06:20	35.52
CVS_O	Commodore	02/20/2009 09:40	02/20/2009 12:45	1.09
CVS_O	Commodore	02/20/2009 15:00	02/20/2009 16:40	53.17
CVS_O	Commodore	02/28/2009 11:30	02/28/2009 12:40	12.00
CVS_O	Commodore	02/28/2009 13:45	02/28/2009 15:00	11.55
CVS_O	Commodore	02/28/2009 19:40	02/28/2009 22:20	9.76
CVS_O	Commodore	02/28/2009 23:10	03/01/2009 00:30	8.89
CVS_O	Commodore	03/01/2009 01:45	03/01/2009 08:50	40.14
CVS_O	Commodore	07/28/2009 12:15	07/28/2009 17:00	18.82
CVS_O	Commodore	07/28/2009 21:00	07/28/2009 23:00	37.66
CVS_O	Commodore	07/29/2009 18:00	07/29/2009 23:45	61.93
CVS_O	Commodore	07/30/2009 02:00	07/30/2009 08:30	34.83
CVS_O	Commodore	07/30/2009 10:00	07/30/2009 12:00	13.38
CVS_O	Commodore	07/30/2009 14:40	07/30/2009 20:30	24.38
CVS_O	Commodore	08/19/2009 02:30	08/19/2009 09:00	13.72
CVS_O	Commodore	08/20/2009 02:30	08/20/2009 09:00	29.68
CVS_O	Commodore	08/20/2009 23:50	08/21/2009 08:30	65.23
CVS_O	Commodore	08/21/2009 23:50	08/22/2009 07:00	52.00
CVS_O	Defender	02/26/2009 23:05	02/27/2009 06:45	160.33
CVS_O	Defender	02/27/2009 08:00	02/27/2009 19:00	17.86
CVS_O	Defender	02/27/2009 20:30	02/28/2009 04:45	143.92
CVS_O	Defender	02/28/2009 05:30	02/28/2009 10:00	65.63
CVS_O	Defender	02/28/2009 21:00	03/01/2009 02:30	83.15
CVS_O	Defender	03/01/2009 03:00	03/01/2009 08:30	67.62
CVS_O	Defender	07/07/2009 03:30	07/07/2009 16:45	60.48
CVS_O	Defender	07/08/2009 22:15	07/09/2009 14:45	187.37
CVS_O	Defender	07/09/2009 21:00	07/10/2009 03:00	208.97
CVS_O	Defender	07/10/2009 04:00	07/10/2009 12:00	156.73
CVS_O	Defender	07/10/2009 13:15	07/10/2009 15:45	89.95
CVS_O	Defender	07/31/2009 22:00	08/01/2009 05:00	227.89
CVS_O	Defender	08/01/2009 06:10	08/01/2009 15:15	228.59
CVS_O	Defender	08/01/2009 16:30	08/02/2009 06:25	228.59
CVS_O	Destination	03/05/2009 21:45	03/06/2009 06:00	160.42
CVS_O	Destination	03/06/2009 07:30	03/06/2009 18:00	48.07
CVS_O	Destination	03/06/2009 21:15	03/07/2009 03:30	160.34
CVS_O	Destination	03/07/2009 05:30	03/07/2009 09:30	87.46
CVS_O	Destination	07/13/2009 16:15	07/13/2009 19:30	150.71
CVS_O	Destination	07/14/2009 21:00	07/15/2009 10:15	80.66
CVS_O	Destination	07/15/2009 11:30	07/15/2009 23:40	99.26
CVS_O	Destination	07/16/2009 01:00	07/16/2009 08:50	153.88
CVS_O	Dominator	02/23/2009 14:05	02/23/2009 15:25	142.07
CVS_O	Dominator	02/23/2009 17:15	02/23/2009 21:15	108.12

Appendix 1. Continued.

Sector	Vessel	Start of Haul	End of Haul	Pollock Weight (Metric tons)
CVS_O	Dominator	02/23/2009 22:40	02/24/2009 08:35	42.25
CVS_O	Elizabeth F	02/16/2009 16:00	02/16/2009 20:30	34.60
CVS_O	Elizabeth F	02/16/2009 22:15	02/17/2009 08:30	37.78
CP	Excellence	02/11/2009 06:20	02/11/2009 19:30	31.31
CP	Excellence	02/12/2009 03:00	02/12/2009 05:32	42.24
CP	Excellence	02/18/2009 15:10	02/18/2009 15:47	41.94
CP	Excellence	02/22/2009 22:40	02/23/2009 04:45	45.77
CP	Excellence	02/23/2009 12:35	02/23/2009 22:20	20.03
CP	Excellence	02/27/2009 23:21	02/28/2009 01:45	29.44
CP	Excellence	02/28/2009 00:25	02/28/2009 09:20	39.64
CP	Excellence	03/01/2009 04:15	03/01/2009 09:50	14.13
CP	Excellence	03/02/2009 08:05	03/02/2009 09:10	28.72
CP	Excellence	03/03/2009 01:20	03/03/2009 04:07	45.08
CP	Excellence	03/07/2009 00:15	03/07/2009 00:50	43.14
CP	Excellence	03/08/2009 06:20	03/08/2009 08:15	53.61
CP	Excellence	03/08/2009 10:40	03/08/2009 11:50	57.31
CP	Excellence	03/09/2009 05:50	03/09/2009 14:30	58.35
CP	Excellence	03/11/2009 15:45	03/11/2009 17:40	54.38
CP	Excellence	03/13/2009 23:30	03/14/2009 01:14	54.91
CP	Excellence	03/14/2009 03:22	03/14/2009 11:40	49.74
CP	Excellence	06/19/2009 12:45	06/19/2009 16:05	56.01
CP	Excellence	06/19/2009 13:10	06/19/2009 20:55	56.92
CP	Excellence	06/20/2009 12:50	06/20/2009 14:10	55.37
CP	Excellence	06/22/2009 04:30	06/22/2009 11:00	57.17
CP	Excellence	06/25/2009 04:05	06/25/2009 11:25	48.11
CP	Excellence	06/25/2009 18:35	06/26/2009 06:15	56.88
CP	Excellence	06/30/2009 09:35	06/30/2009 17:00	24.37
CP	Excellence	07/07/2009 10:50	07/07/2009 19:10	25.97
CP	Excellence	07/09/2009 15:20	07/09/2009 23:10	56.64
CP	Excellence	07/13/2009 12:10	07/13/2009 16:50	46.20
CP	Excellence	07/13/2009 13:25	07/13/2009 19:50	45.36
CP	Excellence	07/13/2009 21:10	07/14/2009 13:20	43.68
CP	Excellence	07/15/2009 20:20	07/16/2009 09:40	24.29
CP	Excellence	07/19/2009 16:35	07/19/2009 23:40	40.63
CP	Excellence	07/19/2009 16:55	07/19/2009 22:20	45.03
CP	Excellence	07/20/2009 08:50	07/20/2009 12:50	47.13
CP	Excellence	07/20/2009 11:35	07/20/2009 17:05	58.03
CP	Excellence	07/25/2009 19:15	07/26/2009 05:52	46.37
CP	Excellence	07/31/2009 00:10	07/31/2009 03:24	41.43
CP	Excellence	07/31/2009 08:25	07/31/2009 14:30	50.57
CP	Excellence	08/01/2009 00:35	08/01/2009 10:10	50.64
CP	Excellence	08/01/2009 18:35	08/01/2009 22:05	55.00
CP	Excellence	08/01/2009 20:10	08/02/2009 09:55	54.99
CP	Excellence	08/02/2009 05:10	08/02/2009 10:11	46.26
CP	Excellence	08/02/2009 18:28	08/02/2009 19:30	51.32
CP	Excellence	08/05/2009 22:55	08/06/2009 08:45	47.96
CP	Excellence	08/07/2009 15:15	08/07/2009 18:10	39.90
CP	Excellence	08/07/2009 22:22	08/08/2009 09:20	54.18
CP	Excellence	08/08/2009 03:45	08/08/2009 13:10	45.91
CP	Excellence	08/11/2009 11:10	08/11/2009 16:50	57.91

Appendix 1. Continued.

Sector	Vessel	Start of Haul	End of Haul	Pollock Weight (Metric tons)
CVS_O	Fierce Allegiance	03/16/2009 22:00	03/17/2009 00:15	46.23
CVS_O	Fierce Allegiance	03/17/2009 01:45	03/17/2009 10:00	42.32
CVS_O	Fierce Allegiance	03/17/2009 19:30	03/18/2009 09:00	167.89
CVS_O	Fierce Allegiance	03/18/2009 11:30	03/18/2009 18:30	46.69
CVS_O	Fierce Allegiance	03/18/2009 20:00	03/19/2009 01:00	75.19
CVS_O	Fierce Allegiance	07/19/2009 18:00	07/20/2009 03:30	129.87
CVS_O	Fierce Allegiance	07/20/2009 04:30	07/20/2009 14:00	62.53
CVS_O	Fierce Allegiance	07/20/2009 16:00	07/21/2009 06:30	67.04
CVS_O	Fierce Allegiance	07/21/2009 09:30	07/21/2009 12:00	96.20
CP	Golden Alaska	01/30/2009 06:15	01/30/2009 14:35	52.64
CP	Golden Alaska	02/01/2009 20:30	02/02/2009 01:00	42.92
CP	Golden Alaska	02/02/2009 07:07	02/02/2009 18:20	60.42
CP	Golden Alaska	02/08/2009 10:14	02/08/2009 19:50	4.66
CP	Golden Alaska	02/20/2009 15:22	02/20/2009 16:14	62.97
CP	Golden Alaska	02/22/2009 21:28	02/23/2009 04:45	57.42
CP	Golden Alaska	02/24/2009 00:20	02/24/2009 05:40	49.16
CP	Golden Alaska	02/27/2009 20:30	02/27/2009 23:55	40.20
CP	Golden Alaska	02/28/2009 20:02	03/01/2009 02:30	48.76
CP	Golden Alaska	02/28/2009 20:14	03/01/2009 01:33	51.44
CP	Golden Alaska	03/01/2009 04:20	03/01/2009 19:30	42.18
CP	Golden Alaska	03/01/2009 09:25	03/02/2009 01:45	59.05
CP	Golden Alaska	03/02/2009 23:30	03/03/2009 01:55	51.20
CP	Golden Alaska	03/03/2009 01:10	03/03/2009 04:45	53.43
CP	Golden Alaska	03/03/2009 16:00	03/03/2009 23:30	57.47
CP	Golden Alaska	03/11/2009 19:50	03/11/2009 23:10	64.49
CP	Golden Alaska	03/11/2009 22:30	03/12/2009 02:00	56.42
CP	Golden Alaska	03/12/2009 03:10	03/12/2009 07:05	62.87
CP	Golden Alaska	03/13/2009 21:00	03/14/2009 01:25	57.46
CP	Golden Alaska	03/14/2009 17:00	03/14/2009 23:00	49.66
CP	Golden Alaska	03/15/2009 00:40	03/15/2009 03:18	52.13
CP	Golden Alaska	03/24/2009 07:00	03/24/2009 15:00	62.64
CP	Golden Alaska	03/27/2009 04:00	03/27/2009 06:00	51.39
CP	Golden Alaska	03/28/2009 06:30	03/28/2009 09:52	58.64
CP	Golden Alaska	06/15/2009 18:20	06/15/2009 23:20	30.98
CP	Golden Alaska	06/16/2009 17:35	06/16/2009 22:00	61.59
CP	Golden Alaska	06/16/2009 23:55	06/17/2009 10:15	31.78
CP	Golden Alaska	06/17/2009 04:00	06/17/2009 12:00	25.81
CP	Golden Alaska	06/20/2009 02:00	06/20/2009 07:40	69.87
CP	Golden Alaska	06/20/2009 06:30	06/20/2009 12:10	57.57
CP	Golden Alaska	06/30/2009 01:15	06/30/2009 09:05	30.72
CP	Golden Alaska	06/30/2009 02:30	06/30/2009 11:45	30.78
CP	Golden Alaska	06/30/2009 16:09	06/30/2009 22:40	4.36
CP	Golden Alaska	07/01/2009 17:21	07/02/2009 03:10	64.58
CP	Golden Alaska	07/02/2009 19:30	07/02/2009 23:00	6.79
CP	Golden Alaska	07/03/2009 10:30	07/03/2009 15:20	68.29
CP	Golden Alaska	07/07/2009 13:30	07/07/2009 21:00	34.00
CP	Golden Alaska	07/10/2009 18:42	07/10/2009 22:50	60.99
CP	Golden Alaska	07/10/2009 22:15	07/11/2009 08:40	68.20
CP	Golden Alaska	07/11/2009 06:20	07/11/2009 13:10	58.75
CP	Golden Alaska	07/11/2009 16:30	07/11/2009 17:30	25.17

Appendix 1. Continued.

Sector	Vessel	Start of Haul	End of Haul	Pollock Weight (Metric tons)
CP	Golden Alaska	07/13/2009 18:24	07/14/2009 11:00	30.82
CP	Golden Alaska	07/19/2009 11:40	07/19/2009 17:50	62.65
CP	Golden Alaska	07/19/2009 15:40	07/19/2009 20:30	64.72
CP	Golden Alaska	07/20/2009 07:37	07/20/2009 15:20	48.56
CP	Golden Alaska	07/20/2009 17:27	07/20/2009 18:21	61.25
CP	Golden Alaska	07/20/2009 19:44	07/21/2009 08:44	71.25
CP	Golden Alaska	07/21/2009 14:35	07/21/2009 17:05	60.99
CP	Golden Alaska	07/21/2009 23:29	07/22/2009 12:10	38.99
CP	Golden Alaska	07/22/2009 07:00	07/22/2009 16:15	49.92
CP	Golden Alaska	07/23/2009 04:10	07/23/2009 11:55	57.43
CP	Golden Alaska	07/23/2009 21:15	07/24/2009 09:40	27.70
CP	Golden Alaska	08/02/2009 02:00	08/02/2009 09:36	60.93
CP	Golden Alaska	08/03/2009 00:35	08/03/2009 06:46	58.06
CP	Golden Alaska	08/03/2009 05:20	08/03/2009 11:00	70.53
CP	Golden Alaska	08/04/2009 04:55	08/04/2009 12:00	64.11
CP	Golden Alaska	08/04/2009 21:00	08/05/2009 04:00	61.19
CP	Golden Alaska	08/05/2009 11:00	08/05/2009 14:28	64.33
CP	Golden Alaska	08/08/2009 09:26	08/08/2009 15:00	61.19
CP	Golden Alaska	08/09/2009 09:18	08/09/2009 18:27	60.53
CP	Golden Alaska	08/13/2009 07:22	08/13/2009 16:42	15.22
CP	Golden Alaska	08/15/2009 00:35	08/15/2009 05:50	58.58
CP	Golden Alaska	08/15/2009 14:20	08/15/2009 17:40	53.65
CP	Golden Alaska	08/16/2009 02:00	08/16/2009 13:30	47.19
CP	Golden Alaska	08/22/2009 22:40	08/23/2009 07:40	50.93
CP	Golden Alaska	08/25/2009 10:40	08/25/2009 19:15	27.31
CP	Golden Alaska	08/25/2009 18:12	08/26/2009 11:48	47.29
CP	Golden Alaska	08/27/2009 16:20	08/27/2009 20:55	7.17
CP	Golden Alaska	08/27/2009 23:30	08/28/2009 11:50	36.17
CP	Golden Alaska	08/28/2009 16:40	08/28/2009 17:10	54.66
CP	Golden Alaska	08/31/2009 00:45	08/31/2009 05:20	44.86
CP	Golden Alaska	08/31/2009 06:10	08/31/2009 08:40	43.46
CP	Golden Alaska	09/05/2009 06:16	09/05/2009 08:59	35.74
CP	Golden Alaska	09/06/2009 12:07	09/06/2009 13:37	50.08
CP	Golden Alaska	09/09/2009 08:05	09/09/2009 16:40	53.49
CP	Golden Alaska	09/11/2009 08:51	09/11/2009 16:34	5.42
CP	Golden Alaska	09/17/2009 01:00	09/17/2009 14:15	55.67
CVS_O	Golden Dawn	02/06/2009 16:02	02/06/2009 23:12	71.14
CVS_O	Golden Dawn	02/07/2009 00:37	02/07/2009 10:26	47.06
CVS_O	Golden Dawn	02/07/2009 13:24	02/07/2009 16:44	2.57
CVS_O	Golden Dawn	02/07/2009 22:34	02/08/2009 08:19	44.87
CVS_O	Golden Dawn	02/08/2009 11:44	02/08/2009 12:39	3.06
CVS_O	Golden Dawn	03/10/2009 00:14	03/10/2009 11:01	77.62
CVS_O	Golden Dawn	03/10/2009 14:51	03/10/2009 19:17	131.59
CVS_O	Golden Dawn	03/10/2009 20:37	03/10/2009 22:30	114.29
CVS_O	Golden Dawn	03/22/2009 02:11	03/22/2009 03:26	116.09
CVS_O	Golden Dawn	07/28/2009 15:15	07/28/2009 16:16	92.92
CVS_O	Golden Dawn	07/28/2009 17:24	07/28/2009 18:48	156.15
CVS_O	Golden Dawn	07/28/2009 20:41	07/28/2009 21:01	78.26
CVS_O	Golden Dawn	09/14/2009 00:43	09/14/2009 09:39	49.51
CVS_O	Golden Dawn	09/14/2009 12:14	09/14/2009 17:41	12.08

Appendix 1. Continued.

Sector	Vessel	Start of Haul	End of Haul	Pollock Weight (Metric tons)
CVS_O	Golden Dawn	09/15/2009 01:02	09/15/2009 11:03	38.74
CVS_O	Golden Dawn	09/15/2009 12:25	09/15/2009 22:08	21.69
CVS_O	Golden Dawn	09/16/2009 00:36	09/16/2009 12:53	33.62
CVS_O	Golden Dawn	09/17/2009 22:25	09/18/2009 09:51	57.73
CVS_O	Golden Dawn	09/21/2009 02:22	09/21/2009 10:55	27.07
CVS_O	Golden Dawn	09/21/2009 13:33	09/21/2009 21:37	12.32
CVS_O	Golden Dawn	09/21/2009 22:45	09/22/2009 09:40	49.26
CVS_O	Golden Dawn	09/22/2009 16:50	09/22/2009 21:21	2.60
CVS_O	Great Pacific	02/24/2009 00:47	02/24/2009 10:45	19.73
CVS_O	Great Pacific	02/26/2009 20:03	02/27/2009 03:36	121.07
CVS_O	Great Pacific	02/27/2009 04:48	02/27/2009 06:17	37.71
CVS_O	Great Pacific	03/17/2009 23:13	03/18/2009 10:24	103.13
CVS_O	Gun-mar	02/26/2009 21:36	02/27/2009 07:00	182.28
CVS_O	Gun-mar	02/27/2009 11:25	02/27/2009 14:00	1.57
CVS_O	Gun-mar	02/27/2009 20:15	02/28/2009 05:00	157.38
CVS_O	Gun-mar	02/28/2009 06:20	02/28/2009 10:30	74.39
CVS_O	Gun-mar	02/28/2009 20:30	03/01/2009 06:00	85.33
CVS_O	Gun-mar	03/02/2009 20:45	03/03/2009 06:00	151.08
CVS_O	Gun-mar	03/20/2009 20:00	03/21/2009 00:30	143.22
CVS_O	Gun-mar	03/21/2009 02:10	03/21/2009 06:00	122.61
CVS_O	Gun-mar	03/21/2009 07:00	03/21/2009 08:30	203.54
CVS_O	Gun-mar	03/21/2009 10:30	03/21/2009 14:15	92.07
CVS_O	Gun-mar	07/22/2009 21:15	07/23/2009 10:00	144.75
CVS_O	Gun-mar	07/23/2009 11:20	07/23/2009 21:00	174.46
CVS_O	Gun-mar	07/23/2009 22:30	07/24/2009 10:45	116.30
CVS_O	Gun-mar	07/24/2009 14:00	07/24/2009 14:20	58.15
CVS_O	Gun-mar	07/24/2009 15:20	07/24/2009 16:55	96.92
CP	Island Enterprise	02/01/2009 22:30	02/02/2009 05:45	38.04
CP	Island Enterprise	02/02/2009 08:45	02/02/2009 12:15	86.63
CP	Island Enterprise	02/04/2009 06:05	02/04/2009 10:40	42.54
CP	Island Enterprise	02/05/2009 02:05	02/05/2009 06:45	1.73
CP	Island Enterprise	02/05/2009 14:45	02/05/2009 20:40	9.21
CP	Island Enterprise	02/09/2009 21:30	02/10/2009 02:25	64.45
CP	Island Enterprise	02/15/2009 20:40	02/15/2009 22:25	76.65
CP	Island Enterprise	02/21/2009 14:20	02/21/2009 19:40	18.48
CP	Island Enterprise	02/23/2009 05:40	02/23/2009 07:40	90.48
CP	Island Enterprise	02/23/2009 11:00	02/23/2009 13:00	70.61
CP	Island Enterprise	02/23/2009 17:20	02/23/2009 19:25	68.07
CP	Island Enterprise	02/28/2009 04:35	02/28/2009 06:15	88.88
CP	Island Enterprise	02/28/2009 22:35	02/28/2009 23:20	67.57
CP	Island Enterprise	03/01/2009 15:00	03/01/2009 19:00	74.62
CP	Island Enterprise	03/02/2009 21:00	03/02/2009 21:30	72.70
CP	Island Enterprise	03/09/2009 11:00	03/09/2009 14:40	66.69
CP	Island Enterprise	03/11/2009 16:20	03/11/2009 20:25	13.58
CP	Island Enterprise	03/13/2009 05:45	03/13/2009 08:00	103.12
CP	Island Enterprise	07/02/2009 16:50	07/02/2009 23:30	20.66
CP	Island Enterprise	07/24/2009 22:50	07/25/2009 02:20	31.44
CP	Island Enterprise	07/27/2009 23:20	07/28/2009 05:10	71.90
CP	Island Enterprise	07/29/2009 04:50	07/29/2009 08:00	94.50
CP	Island Enterprise	07/29/2009 13:00	07/29/2009 14:10	99.37

Appendix 1. Continued.

Sector	Vessel	Start of Haul	End of Haul	Pollock Weight (Metric tons)
CP	Island Enterprise	07/30/2009 04:00	07/30/2009 05:20	61.90
CP	Island Enterprise	07/31/2009 08:45	07/31/2009 13:35	98.18
CP	Kodiak Enterprise	01/30/2009 04:05	01/30/2009 10:00	25.45
CP	Kodiak Enterprise	02/01/2009 14:15	02/01/2009 18:10	76.99
CP	Kodiak Enterprise	02/03/2009 05:30	02/03/2009 14:30	26.95
CP	Kodiak Enterprise	02/03/2009 22:10	02/04/2009 01:20	34.75
CP	Kodiak Enterprise	02/24/2009 07:55	02/24/2009 14:00	41.45
CP	Kodiak Enterprise	03/01/2009 05:50	03/01/2009 06:30	84.10
CP	Kodiak Enterprise	06/14/2009 04:00	06/14/2009 06:45	69.83
CP	Kodiak Enterprise	06/15/2009 13:30	06/15/2009 15:35	91.69
CP	Kodiak Enterprise	06/15/2009 21:10	06/15/2009 23:25	71.51
CP	Kodiak Enterprise	06/24/2009 09:00	06/24/2009 11:00	78.86
CP	Kodiak Enterprise	06/28/2009 00:15	06/28/2009 02:10	90.75
CP	Kodiak Enterprise	06/29/2009 14:55	06/29/2009 16:30	87.26
CP	Kodiak Enterprise	07/10/2009 20:25	07/11/2009 02:25	70.69
CP	Kodiak Enterprise	07/13/2009 04:20	07/13/2009 05:35	61.30
CP	Kodiak Enterprise	07/15/2009 21:10	07/15/2009 22:45	77.73
CP	Kodiak Enterprise	07/26/2009 13:00	07/26/2009 14:30	65.05
CP	Kodiak Enterprise	07/27/2009 02:15	07/27/2009 03:45	68.15
CP	Kodiak Enterprise	07/28/2009 20:10	07/28/2009 21:00	98.90
CVS_O	Majesty	07/07/2009 16:00	07/07/2009 20:10	110.65
CVS_O	Majesty	07/07/2009 22:00	07/08/2009 05:40	64.28
CVS_O	Majesty	07/12/2009 15:00	07/12/2009 18:45	125.53
CVS_O	Majesty	07/12/2009 20:30	07/13/2009 02:00	43.38
CVS_O	Majesty	09/25/2009 22:12	09/25/2009 23:10	0.10
CVS_O	Majesty	09/26/2009 00:20	09/26/2009 01:30	1.42
CVM	Margaret Lyn	02/11/2009 11:30	02/11/2009 21:25	10.60
CVM	Margaret Lyn	02/14/2009 08:45	02/14/2009 14:20	4.97
CVM	Margaret Lyn	02/14/2009 22:20	02/15/2009 03:00	40.88
CVM	Margaret Lyn	03/03/2009 05:55	03/03/2009 13:32	10.83
CVM	Margaret Lyn	03/07/2009 22:45	03/08/2009 01:45	59.07
CVM	Margaret Lyn	03/08/2009 08:16	03/08/2009 14:20	57.30
CVM	Margaret Lyn	06/24/2009 02:30	06/24/2009 09:10	46.15
CVM	Margaret Lyn	06/27/2009 08:30	06/27/2009 12:00	33.10
CVM	Margaret Lyn	06/29/2009 08:30	06/29/2009 13:30	45.12
CVM	Margaret Lyn	06/30/2009 13:50	06/30/2009 19:55	5.46
CVM	Margaret Lyn	07/09/2009 01:35	07/09/2009 10:05	57.34
CVM	Margaret Lyn	07/14/2009 18:40	07/15/2009 05:30	57.69
CVM	Margaret Lyn	08/07/2009 00:15	08/07/2009 10:20	56.63
CVM	Mar-gun	02/04/2009 07:15	02/04/2009 14:45	42.23
CVM	Mar-gun	02/07/2009 02:00	02/07/2009 10:30	24.15
CVM	Mar-gun	02/11/2009 08:15	02/11/2009 22:15	23.97
CVM	Mar-gun	02/12/2009 23:15	02/13/2009 02:35	45.23
CVM	Mark I	02/07/2009 06:30	02/07/2009 18:20	25.23
CVM	Mark I	02/10/2009 16:46	02/10/2009 22:35	45.72
CVM	Mark I	02/14/2009 22:53	02/15/2009 07:10	29.52
CVM	Mark I	02/19/2009 18:25	02/19/2009 19:35	54.55
CVM	Mark I	06/21/2009 05:20	06/21/2009 10:30	52.03
CVM	Mark I	06/23/2009 15:35	06/23/2009 22:20	46.85
CVM	Mark I	07/16/2009 01:55	07/16/2009 10:38	15.51

Appendix 1. Continued.

Sector	Vessel	Start of Haul	End of Haul	Pollock Weight (Metric tons)
CVM	Mark I	07/17/2009 22:46	07/18/2009 10:37	33.58
CVM	Mark I	07/21/2009 05:00	07/21/2009 11:00	57.64
CVM	Mark I	07/29/2009 13:30	07/29/2009 20:15	35.06
CVM	Mark I	07/31/2009 09:10	07/31/2009 17:30	37.73
CVM	Mark I	08/01/2009 08:26	08/01/2009 11:47	56.42
CVM	Mark I	08/02/2009 18:50	08/02/2009 21:15	59.43
CVM	Mark I	08/02/2009 22:15	08/03/2009 04:50	55.40
CVM	Misty Dawn	02/21/2009 16:25	02/21/2009 18:00	53.60
CVM	Misty Dawn	03/09/2009 08:30	03/09/2009 12:40	50.03
CVM	Misty Dawn	03/10/2009 16:10	03/10/2009 19:00	51.42
CVM	Misty Dawn	06/23/2009 10:45	06/23/2009 14:05	48.39
CVM	Misty Dawn	07/07/2009 21:30	07/08/2009 06:40	21.61
CVM	Misty Dawn	07/13/2009 13:25	07/13/2009 19:50	45.36
CVM	Misty Dawn	07/14/2009 19:45	07/15/2009 01:50	36.00
CVM	Misty Dawn	07/16/2009 20:15	07/16/2009 22:15	55.66
CVM	Misty Dawn	07/25/2009 15:00	07/25/2009 18:35	55.86
CVM	Misty Dawn	07/31/2009 15:45	07/31/2009 19:20	46.66
CVM	Misty Dawn	08/01/2009 11:45	08/01/2009 18:15	56.98
CVM	Misty Dawn	08/05/2009 22:55	08/06/2009 08:45	47.96
CVS_O	Morning Star	03/02/2009 22:15	03/03/2009 02:50	129.33
CVS_O	Morning Star	03/03/2009 05:30	03/03/2009 07:30	150.00
CVS_O	Morning Star	03/03/2009 09:35	03/03/2009 12:40	19.00
CVS_O	Morning Star	03/03/2009 17:25	03/03/2009 21:16	88.56
CVS_O	Morning Star	06/24/2009 11:35	06/24/2009 18:25	5.00
CVS_O	Morning Star	06/25/2009 04:45	06/25/2009 12:45	132.86
CVS_O	Morning Star	06/25/2009 14:30	06/25/2009 17:10	132.86
CVS_O	Morning Star	06/25/2009 20:50	06/26/2009 03:00	122.64
CVS_O	Morning Star	06/28/2009 18:10	06/29/2009 07:00	112.00
CVS_O	Morning Star	08/23/2009 20:59	08/24/2009 02:40	120.00
CVS_O	Morning Star	08/24/2009 04:45	08/24/2009 10:05	125.00
CVS_O	Morning Star	08/24/2009 16:00	08/24/2009 19:29	100.00
CVS_O	Morning Star	09/06/2009 00:55	09/06/2009 07:00	140.16
CVS_O	Morning Star	09/06/2009 10:30	09/06/2009 17:20	140.16
CVS_O	Morning Star	09/06/2009 19:10	09/06/2009 23:50	50.06
CVM	Nordic Fury	02/07/2009 01:30	02/07/2009 08:35	39.49
CVM	Nordic Fury	02/09/2009 15:20	02/10/2009 02:30	26.81
CVM	Nordic Fury	02/10/2009 05:50	02/10/2009 16:25	17.33
CVM	Nordic Fury	02/15/2009 04:40	02/15/2009 12:55	23.11
CVM	Nordic Fury	03/08/2009 06:20	03/08/2009 06:40	50.17
CVM	Nordic Fury	06/18/2009 22:20	06/19/2009 06:25	52.09
CVM	Nordic Fury	06/19/2009 08:35	06/19/2009 10:05	51.50
CVM	Nordic Fury	06/22/2009 03:25	06/22/2009 09:00	28.23
CVM	Nordic Fury	06/27/2009 07:30	06/27/2009 13:20	5.62
CVM	Nordic Fury	06/27/2009 18:20	06/27/2009 21:50	53.99
CVM	Nordic Fury	07/02/2009 08:45	07/02/2009 20:20	15.59
CVM	Nordic Fury	07/12/2009 18:35	07/13/2009 08:10	33.71
CVM	Nordic Fury	07/13/2009 09:50	07/13/2009 21:50	26.53
CVM	Nordic Fury	07/20/2009 03:55	07/20/2009 08:50	54.05
CVM	Nordic Fury	07/30/2009 01:30	07/30/2009 09:50	14.64
CVM	Nordic Fury	07/30/2009 21:25	07/31/2009 09:50	52.43

Appendix 1. Continued.

Sector	Vessel	Start of Haul	End of Haul	Pollock Weight (Metric tons)
CVM	Nordic Fury	08/01/2009 11:55	08/01/2009 21:30	35.67
CVM	Nordic Fury	08/05/2009 05:20	08/05/2009 08:00	58.68
CVM	Nordic Fury	08/05/2009 19:05	08/05/2009 22:35	51.42
CP	Northern Eagle	01/25/2009 20:35	01/26/2009 01:40	55.76
CP	Northern Eagle	01/29/2009 23:20	01/30/2009 03:00	56.61
CP	Northern Eagle	01/30/2009 04:45	01/30/2009 08:25	30.06
CP	Northern Eagle	02/01/2009 17:20	02/01/2009 23:00	126.28
CP	Northern Eagle	02/14/2009 12:18	02/14/2009 15:30	10.55
CP	Northern Eagle	02/15/2009 05:10	02/15/2009 07:25	105.92
CP	Northern Eagle	02/19/2009 11:45	02/19/2009 13:55	124.00
CP	Northern Eagle	02/22/2009 21:50	02/23/2009 03:30	100.90
CP	Northern Eagle	02/23/2009 08:09	02/23/2009 13:20	122.61
CP	Northern Eagle	02/25/2009 04:35	02/25/2009 06:00	30.15
CP	Northern Eagle	02/27/2009 22:30	02/28/2009 02:10	81.81
CP	Northern Eagle	02/28/2009 02:45	02/28/2009 06:00	91.10
CP	Northern Eagle	02/28/2009 22:15	03/01/2009 01:00	84.69
CP	Northern Eagle	03/04/2009 09:55	03/04/2009 11:00	10.26
CP	Northern Eagle	03/06/2009 20:45	03/06/2009 23:20	148.33
CP	Northern Eagle	03/09/2009 08:05	03/09/2009 14:55	105.16
CP	Northern Eagle	03/13/2009 07:50	03/13/2009 13:40	83.13
CP	Northern Eagle	03/14/2009 11:54	03/14/2009 18:40	82.73
CP	Northern Eagle	03/18/2009 04:00	03/18/2009 06:10	101.21
CP	Northern Eagle	03/19/2009 04:40	03/19/2009 07:45	74.80
CP	Northern Eagle	03/20/2009 09:00	03/20/2009 14:35	72.78
CP	Northern Eagle	06/28/2009 18:15	06/28/2009 19:15	18.14
CP	Northern Eagle	06/30/2009 19:45	06/30/2009 21:50	6.20
CP	Northern Eagle	07/03/2009 13:40	07/03/2009 20:35	56.29
CP	Northern Eagle	07/06/2009 01:20	07/06/2009 06:45	84.78
CP	Northern Eagle	07/07/2009 14:30	07/07/2009 19:10	57.59
CP	Northern Eagle	07/15/2009 20:10	07/16/2009 00:20	73.13
CP	Northern Eagle	07/16/2009 07:45	07/16/2009 11:00	125.09
CP	Northern Eagle	07/23/2009 08:05	07/23/2009 13:30	40.76
CP	Northern Eagle	07/23/2009 22:50	07/24/2009 00:45	88.45
CP	Northern Eagle	07/24/2009 01:45	07/24/2009 04:10	108.16
CP	Northern Eagle	07/26/2009 12:35	07/26/2009 13:35	103.26
CP	Northern Eagle	07/26/2009 22:10	07/27/2009 03:50	96.56
CP	Northern Eagle	07/27/2009 23:20	07/28/2009 06:20	77.24
CP	Northern Eagle	07/29/2009 18:45	07/30/2009 01:05	75.35
CP	Northern Eagle	08/11/2009 19:50	08/11/2009 23:45	46.01
CP	Northern Eagle	08/18/2009 06:00	08/18/2009 12:00	70.03
CP	Northern Eagle	08/19/2009 01:05	08/19/2009 07:05	66.39
CP	Northern Eagle	08/19/2009 08:00	08/19/2009 15:00	64.56
CP	Northern Eagle	08/21/2009 19:00	08/22/2009 01:10	38.38
CP	Northern Eagle	08/30/2009 18:50	08/31/2009 00:01	42.77
CP	Northern Eagle	09/06/2009 04:45	09/06/2009 10:10	36.50
CP	Northern Eagle	09/09/2009 18:00	09/09/2009 23:40	39.12
CP	Northern Eagle	09/10/2009 10:50	09/10/2009 15:35	36.35
CP	Northern Eagle	09/12/2009 08:45	09/12/2009 13:45	95.18
CP	Northern Eagle	09/13/2009 14:00	09/13/2009 19:15	69.90
CP	Northern Eagle	09/15/2009 15:30	09/15/2009 18:30	15.69



Appendix 1. Continued.

Sector	Vessel	Start of Haul	End of Haul	Pollock Weight (Metric tons)
CP	Northern Eagle	09/16/2009 01:20	09/16/2009 04:00	27.22
CP	Northern Eagle	09/16/2009 11:15	09/16/2009 17:00	113.25
CP	Northern Eagle	09/21/2009 04:55	09/21/2009 12:25	62.78
CP	Northern Eagle	09/23/2009 00:45	09/23/2009 08:45	88.57
CP	Northern Eagle	09/24/2009 00:35	09/24/2009 09:05	91.99
CP	Northern Eagle	09/30/2009 12:40	09/30/2009 16:50	60.24
CP	Northern Eagle	10/03/2009 07:45	10/03/2009 11:10	64.87
CP	Northern Glacier	01/25/2009 13:30	01/25/2009 21:07	42.30
CP	Northern Glacier	01/30/2009 01:40	01/30/2009 09:00	44.01
CP	Northern Glacier	01/30/2009 12:40	01/30/2009 19:45	52.98
CP	Northern Glacier	02/04/2009 22:25	02/05/2009 02:05	19.43
CP	Northern Glacier	02/07/2009 16:40	02/07/2009 18:10	1.46
CP	Northern Glacier	02/08/2009 03:45	02/08/2009 05:35	67.55
CP	Northern Glacier	02/10/2009 03:05	02/10/2009 05:20	42.40
CP	Northern Glacier	02/15/2009 21:45	02/15/2009 23:10	72.25
CP	Northern Glacier	02/20/2009 12:45	02/20/2009 18:05	35.59
CP	Northern Glacier	02/22/2009 00:50	02/22/2009 02:00	21.39
CP	Northern Glacier	02/22/2009 02:45	02/22/2009 05:05	9.41
CP	Northern Glacier	03/01/2009 02:10	03/01/2009 07:35	29.65
CP	Northern Glacier	03/01/2009 10:00	03/01/2009 12:00	6.15
CP	Northern Glacier	03/02/2009 00:05	03/02/2009 01:50	60.15
CP	Northern Glacier	03/03/2009 07:35	03/03/2009 08:00	43.50
CP	Northern Glacier	03/11/2009 22:35	03/11/2009 23:00	28.64
CP	Northern Glacier	03/15/2009 02:45	03/15/2009 04:00	88.26
CP	Northern Glacier	03/15/2009 10:45	03/15/2009 14:25	50.47
CP	Northern Glacier	03/19/2009 00:10	03/19/2009 01:05	45.40
CP	Northern Hawk	01/25/2009 01:05	01/25/2009 08:48	47.79
CP	Northern Hawk	01/27/2009 20:25	01/27/2009 23:55	37.35
CP	Northern Hawk	01/30/2009 05:05	01/30/2009 07:50	53.66
CP	Northern Hawk	01/31/2009 02:45	01/31/2009 05:45	35.42
CP	Northern Hawk	02/01/2009 20:20	02/02/2009 00:10	97.12
CP	Northern Hawk	02/02/2009 04:00	02/02/2009 08:10	108.97
CP	Northern Hawk	02/06/2009 10:10	02/06/2009 14:30	11.33
CP	Northern Hawk	02/07/2009 11:10	02/07/2009 14:20	1.60
CP	Northern Hawk	02/13/2009 19:30	02/14/2009 00:01	68.31
CP	Northern Hawk	02/15/2009 06:25	02/15/2009 09:45	28.38
CP	Northern Hawk	02/20/2009 02:55	02/20/2009 06:45	134.00
CP	Northern Hawk	02/22/2009 10:00	02/22/2009 14:05	106.58
CP	Northern Hawk	02/27/2009 22:25	02/28/2009 05:10	94.32
CP	Northern Hawk	03/02/2009 21:45	03/03/2009 01:10	82.96
CP	Northern Hawk	03/05/2009 10:00	03/05/2009 16:50	14.84
CP	Northern Hawk	03/10/2009 11:35	03/10/2009 15:55	94.06
CP	Northern Hawk	03/12/2009 23:15	03/13/2009 00:40	77.70
CP	Northern Hawk	03/19/2009 02:05	03/19/2009 04:00	113.75
CP	Northern Hawk	07/14/2009 12:35	07/14/2009 17:35	108.85
CP	Northern Hawk	07/15/2009 14:05	07/15/2009 15:55	167.31
CP	Northern Hawk	07/18/2009 00:45	07/18/2009 02:35	14.38
CP	Northern Hawk	07/26/2009 05:00	07/26/2009 08:00	72.86
CP	Northern Hawk	08/01/2009 14:40	08/01/2009 17:50	47.07
CP	Northern Hawk	08/04/2009 06:35	08/04/2009 12:20	91.53

Appendix 1. Continued.

Sector	Vessel	Start of Haul	End of Haul	Pollock Weight (Metric tons)
CP	Northern Hawk	08/05/2009 02:10	08/05/2009 08:10	48.79
CP	Northern Hawk	08/14/2009 00:45	08/14/2009 07:10	120.08
CP	Northern Hawk	08/16/2009 11:40	08/16/2009 14:30	73.53
CP	Northern Hawk	08/17/2009 22:10	08/18/2009 05:40	118.68
CP	Northern Hawk	08/19/2009 04:25	08/19/2009 10:20	104.24
CP	Northern Hawk	08/20/2009 06:05	08/20/2009 12:05	64.54
CP	Northern Hawk	08/20/2009 20:50	08/20/2009 22:20	14.89
CP	Northern Hawk	08/21/2009 17:20	08/21/2009 22:10	66.77
CP	Northern Hawk	08/26/2009 15:05	08/26/2009 20:30	84.77
CP	Northern Hawk	09/07/2009 12:30	09/07/2009 13:05	1.39
CP	Northern Hawk	09/08/2009 09:55	09/08/2009 15:30	68.76
CP	Northern Hawk	09/12/2009 06:25	09/12/2009 09:30	19.65
CP	Northern Hawk	09/21/2009 07:45	09/21/2009 11:35	40.53
CP	Northern Jaeger	07/06/2009 14:44	07/06/2009 15:59	28.44
CP	Northern Jaeger	07/06/2009 19:31	07/07/2009 01:10	53.85
CP	Northern Jaeger	07/13/2009 11:10	07/13/2009 13:00	79.31
CP	Northern Jaeger	07/14/2009 19:00	07/14/2009 22:55	123.46
CP	Northern Jaeger	07/15/2009 20:06	07/15/2009 22:35	96.14
CP	Northern Jaeger	07/29/2009 15:35	07/29/2009 20:08	112.47
CP	Northern Jaeger	08/02/2009 08:13	08/02/2009 12:40	95.94
CP	Northern Jaeger	08/06/2009 08:10	08/06/2009 12:15	65.55
CP	Northern Jaeger	08/10/2009 15:48	08/10/2009 15:54	2.17
CP	Northern Jaeger	08/23/2009 02:24	08/23/2009 07:55	90.27
CP	Northern Jaeger	08/24/2009 06:24	08/24/2009 10:45	74.97
CP	Northern Jaeger	08/24/2009 18:30	08/24/2009 21:27	61.51
CP	Northern Jaeger	08/25/2009 05:51	08/25/2009 12:25	95.31
CP	Northern Jaeger	09/01/2009 19:58	09/02/2009 02:00	79.97
CP	Northern Jaeger	09/04/2009 02:59	09/04/2009 05:52	100.47
CP	Northern Jaeger	09/06/2009 10:38	09/06/2009 15:45	66.56
CP	Northern Jaeger	09/07/2009 21:57	09/08/2009 04:30	60.94
CP	Northern Jaeger	09/13/2009 15:35	09/13/2009 22:17	88.45
CP	Northern Jaeger	09/14/2009 13:20	09/14/2009 17:03	98.65
CP	Northern Jaeger	09/19/2009 23:40	09/20/2009 02:35	85.32
CP	Northern Jaeger	09/20/2009 03:40	09/20/2009 07:45	81.08
CP	Northern Jaeger	09/20/2009 23:05	09/21/2009 03:10	96.68
CP	Northern Jaeger	09/21/2009 04:35	09/21/2009 08:52	97.67
CP	Northern Jaeger	09/22/2009 22:50	09/23/2009 04:15	110.30
CP	Northern Jaeger	09/29/2009 17:55	09/29/2009 22:18	117.20
CVS_O	Northern Patriot	03/21/2009 04:07	03/21/2009 05:48	115.06
CVS_O	Northern Patriot	03/21/2009 07:08	03/21/2009 08:10	82.84
CVS_O	Northern Patriot	03/21/2009 09:40	03/21/2009 12:04	82.84
CVS_O	Northern Patriot	03/21/2009 13:12	03/21/2009 14:26	115.30
CVS_O	Northern Patriot	07/25/2009 11:45	07/25/2009 16:33	116.09
CVS_O	Northern Patriot	07/25/2009 20:28	07/26/2009 07:26	83.17
CVS_O	Northern Patriot	07/26/2009 10:47	07/26/2009 18:39	47.25
CVS_O	Northern Patriot	07/27/2009 09:15	07/27/2009 18:45	116.93
CVS_O	Northern Patriot	08/13/2009 05:45	08/13/2009 09:33	75.91
CVS_O	Northern Patriot	08/13/2009 10:30	08/13/2009 15:58	18.41
CVS_O	Northern Patriot	08/13/2009 19:31	08/13/2009 21:03	111.48
CVS_O	Northern Patriot	08/13/2009 23:08	08/14/2009 04:58	120.24

Appendix 1. Continued.

Sector	Vessel	Start of Haul	End of Haul	Pollock Weight (Metric tons)
CVS_O	Northwest Explorer	08/06/2009 11:31	08/06/2009 14:50	137.22
CVS_O	Northwest Explorer	08/06/2009 16:35	08/06/2009 19:54	147.78
CVS_O	Northwest Explorer	08/06/2009 21:12	08/06/2009 22:30	137.22
CVS_O	Ocean Hope 3	03/02/2009 15:40	03/02/2009 19:30	12.55
CVS_O	Ocean Hope 3	03/02/2009 21:00	03/03/2009 00:10	16.02
CVS_O	Ocean Hope 3	03/03/2009 01:20	03/03/2009 08:05	31.61
CVS_O	Ocean Hope 3	07/06/2009 02:41	07/06/2009 07:15	8.91
CVS_O	Ocean Hope 3	07/06/2009 11:14	07/06/2009 16:17	10.18
CVS_O	Ocean Hope 3	07/06/2009 20:11	07/06/2009 23:19	3.61
CVS_O	Ocean Hope 3	07/07/2009 02:09	07/07/2009 08:08	3.00
CVS_O	Ocean Hope 3	07/07/2009 09:08	07/07/2009 15:16	13.08
CVS_O	Ocean Hope 3	07/07/2009 21:05	07/08/2009 06:30	9.83
CVM	Oceanic	02/01/2009 03:50	02/01/2009 06:10	49.91
CVM	Oceanic	02/01/2009 19:35	02/01/2009 23:05	48.70
CVM	Oceanic	02/03/2009 12:10	02/03/2009 21:20	57.16
CVM	Oceanic	02/03/2009 22:55	02/04/2009 04:40	47.55
CVM	Oceanic	02/14/2009 03:00	02/14/2009 07:00	43.12
CVM	Oceanic	02/14/2009 22:48	02/15/2009 02:35	37.53
CVM	Oceanic	02/18/2009 04:05	02/18/2009 06:00	43.24
CVM	Oceanic	02/19/2009 04:30	02/19/2009 05:50	46.62
CVM	Oceanic	03/04/2009 11:12	03/04/2009 14:53	24.76
CVM	Oceanic	03/08/2009 05:35	03/08/2009 06:45	52.50
CVM	Oceanic	06/18/2009 16:02	06/18/2009 19:19	53.34
CVM	Oceanic	06/24/2009 06:26	06/24/2009 12:17	39.46
CVM	Oceanic	06/25/2009 02:20	06/25/2009 04:50	40.35
CVM	Oceanic	06/27/2009 03:30	06/27/2009 10:20	31.87
CVM	Oceanic	07/02/2009 09:26	07/02/2009 13:34	46.22
CVM	Oceanic	07/03/2009 02:42	07/03/2009 09:45	7.17
CVM	Oceanic	07/03/2009 14:44	07/03/2009 21:58	39.17
CVM	Oceanic	07/18/2009 06:15	07/18/2009 10:50	50.77
CVM	Oceanic	07/26/2009 15:47	07/26/2009 21:50	57.34
CVM	Oceanic	08/02/2009 00:30	08/02/2009 04:45	40.50
CVM	Oceanic	08/02/2009 11:05	08/02/2009 11:49	57.05
CVM	Ocean Leader	01/31/2009 20:40	02/01/2009 07:55	51.22
CVM	Ocean Leader	02/13/2009 03:40	02/13/2009 10:10	38.06
CVM	Ocean Leader	02/18/2009 00:50	02/18/2009 07:38	41.34
CVM	Ocean Leader	02/18/2009 21:45	02/19/2009 00:05	38.47
CVM	Ocean Leader	03/01/2009 22:40	03/02/2009 03:03	48.22
CVM	Ocean Leader	03/14/2009 00:07	03/14/2009 08:57	47.63
CVM	Ocean Leader	03/14/2009 13:40	03/14/2009 20:00	5.95
CVM	Ocean Leader	03/15/2009 22:14	03/16/2009 02:32	40.38
CVM	Ocean Leader	03/21/2009 17:42	03/21/2009 22:48	62.24
CVM	Ocean Leader	03/23/2009 23:20	03/24/2009 03:33	63.77
CVM	Ocean Leader	06/17/2009 17:55	06/17/2009 21:50	49.56
CVM	Ocean Leader	07/12/2009 10:37	07/12/2009 18:30	46.99
CVM	Ocean Leader	07/13/2009 07:55	07/13/2009 16:10	30.74
CVM	Ocean Leader	08/02/2009 01:02	08/02/2009 07:50	57.46
CVM	Ocean Leader	08/05/2009 15:50	08/05/2009 22:50	69.61
CVM	Ocean Leader	08/12/2009 11:11	08/12/2009 16:50	61.49
CVM	Ocean Leader	08/21/2009 15:50	08/21/2009 21:50	68.27

Appendix 1. Continued.

Sector	Vessel	Start of Haul	End of Haul	Pollock Weight (Metric tons)
CVM	Ocean Leader	08/29/2009 17:20	08/30/2009 03:36	55.11
CVM	Ocean Leader	09/06/2009 00:07	09/06/2009 02:03	50.22
CVM	Ocean Leader	09/10/2009 11:01	09/10/2009 20:56	16.98
CVM	Ocean Leader	09/17/2009 09:37	09/17/2009 22:17	45.91
CP	Ocean Peace	06/17/2009 12:04	06/17/2009 19:30	85.56
CP	Ocean Phoenix	01/31/2009 09:00	01/31/2009 13:00	49.61
CP	Ocean Phoenix	01/31/2009 10:25	01/31/2009 14:30	48.30
CP	Ocean Phoenix	02/03/2009 18:15	02/04/2009 01:30	49.11
CP	Ocean Phoenix	02/04/2009 08:30	02/04/2009 11:40	50.59
CP	Ocean Phoenix	02/08/2009 01:50	02/08/2009 09:25	50.20
CP	Ocean Phoenix	02/08/2009 22:00	02/09/2009 10:55	1.53
CP	Ocean Phoenix	02/10/2009 16:46	02/10/2009 22:35	45.72
CP	Ocean Phoenix	02/11/2009 02:35	02/11/2009 14:46	48.31
CP	Ocean Phoenix	02/12/2009 23:20	02/13/2009 02:30	40.47
CP	Ocean Phoenix	02/15/2009 06:15	02/15/2009 13:25	6.97
CP	Ocean Phoenix	02/19/2009 04:30	02/19/2009 06:05	46.29
CP	Ocean Phoenix	02/20/2009 03:39	02/20/2009 05:15	46.68
CP	Ocean Phoenix	02/24/2009 07:23	02/24/2009 11:00	4.52
CP	Ocean Phoenix	02/26/2009 02:25	02/26/2009 09:00	46.87
CP	Ocean Phoenix	02/28/2009 22:40	03/01/2009 03:00	41.74
CP	Ocean Phoenix	03/03/2009 01:00	03/03/2009 06:55	33.76
CP	Ocean Phoenix	03/04/2009 00:25	03/04/2009 03:30	55.95
CP	Ocean Phoenix	03/04/2009 00:50	03/04/2009 02:20	51.62
CP	Ocean Phoenix	03/04/2009 07:00	03/04/2009 11:00	53.09
CP	Ocean Phoenix	03/06/2009 18:05	03/06/2009 20:30	1.17
CP	Ocean Phoenix	03/08/2009 17:44	03/08/2009 20:00	52.24
CP	Ocean Phoenix	06/16/2009 22:10	06/16/2009 23:58	38.41
CP	Ocean Phoenix	06/18/2009 02:32	06/18/2009 06:15	52.27
CP	Ocean Phoenix	06/18/2009 17:40	06/19/2009 01:31	49.40
CP	Ocean Phoenix	06/19/2009 01:10	06/19/2009 04:40	48.20
CP	Ocean Phoenix	06/19/2009 17:57	06/19/2009 21:27	52.70
CP	Ocean Phoenix	06/20/2009 03:45	06/20/2009 06:05	51.64
CP	Ocean Phoenix	06/20/2009 08:38	06/20/2009 10:11	44.65
CP	Ocean Phoenix	06/20/2009 17:00	06/20/2009 21:00	51.66
CP	Ocean Phoenix	06/21/2009 08:45	06/21/2009 10:50	47.18
CP	Ocean Phoenix	06/21/2009 13:10	06/21/2009 17:50	8.49
CP	Ocean Phoenix	06/22/2009 03:07	06/22/2009 09:50	35.36
CP	Ocean Phoenix	06/23/2009 17:25	06/23/2009 22:00	56.62
CP	Ocean Phoenix	06/23/2009 23:17	06/24/2009 09:10	53.92
CP	Ocean Phoenix	06/24/2009 11:20	06/24/2009 14:45	10.99
CP	Ocean Phoenix	06/25/2009 04:00	06/25/2009 06:25	33.34
CP	Ocean Phoenix	06/25/2009 09:35	06/25/2009 17:10	19.01
CP	Ocean Phoenix	06/26/2009 05:16	06/26/2009 09:05	53.85
CP	Ocean Phoenix	06/27/2009 18:40	06/27/2009 20:55	49.70
CP	Ocean Phoenix	06/28/2009 14:40	06/28/2009 20:30	9.31
CP	Ocean Phoenix	07/03/2009 02:42	07/03/2009 09:45	7.17
CP	Ocean Phoenix	07/03/2009 22:50	07/04/2009 07:35	48.21
CP	Ocean Phoenix	07/03/2009 23:17	07/04/2009 05:50	48.97
CP	Ocean Phoenix	07/04/2009 08:45	07/04/2009 16:00	55.16
CP	Ocean Phoenix	07/05/2009 11:45	07/05/2009 15:30	52.64

Appendix 1. Continued.

Sector	Vessel	Start of Haul	End of Haul	Pollock Weight (Metric tons)
CP	Ocean Phoenix	07/10/2009 19:06	07/11/2009 09:40	17.96
CP	Ocean Phoenix	07/13/2009 10:37	07/13/2009 18:00	51.99
CP	Ocean Phoenix	07/15/2009 01:45	07/15/2009 08:10	43.58
CP	Ocean Phoenix	07/15/2009 08:45	07/15/2009 14:12	45.96
CP	Ocean Phoenix	07/15/2009 15:57	07/15/2009 17:25	51.01
CP	Ocean Phoenix	07/15/2009 17:55	07/15/2009 20:55	57.66
CP	Ocean Phoenix	07/15/2009 22:27	07/16/2009 09:33	35.33
CP	Ocean Phoenix	07/18/2009 15:00	07/18/2009 18:10	57.31
CP	Ocean Phoenix	07/19/2009 07:10	07/19/2009 08:10	43.53
CP	Ocean Phoenix	07/22/2009 02:28	07/22/2009 12:05	46.44
CP	Ocean Phoenix	07/22/2009 10:10	07/22/2009 21:10	47.43
CP	Ocean Phoenix	07/22/2009 17:40	07/23/2009 05:35	58.45
CP	Ocean Phoenix	07/22/2009 22:35	07/23/2009 03:15	57.20
CP	Ocean Phoenix	07/23/2009 13:20	07/23/2009 14:40	52.63
CP	Ocean Phoenix	07/25/2009 07:00	07/25/2009 11:00	25.71
CP	Ocean Phoenix	07/26/2009 23:31	07/27/2009 05:15	57.50
CP	Ocean Phoenix	07/27/2009 19:37	07/27/2009 20:56	53.76
CP	Ocean Phoenix	07/29/2009 04:05	07/29/2009 08:45	47.77
CP	Ocean Phoenix	07/29/2009 21:16	07/30/2009 07:15	16.66
CP	Ocean Phoenix	07/29/2009 22:48	07/30/2009 08:10	22.27
CP	Ocean Phoenix	07/30/2009 21:40	07/31/2009 00:20	58.63
CP	Ocean Phoenix	07/31/2009 02:15	07/31/2009 06:00	53.31
CP	Ocean Phoenix	07/31/2009 09:10	07/31/2009 17:30	37.73
CP	Ocean Phoenix	08/01/2009 11:55	08/01/2009 21:30	35.67
CP	Ocean Phoenix	08/01/2009 13:10	08/01/2009 21:40	14.60
CP	Ocean Phoenix	08/02/2009 00:15	08/02/2009 06:50	53.70
CP	Ocean Phoenix	08/02/2009 11:05	08/02/2009 11:49	57.05
CP	Ocean Phoenix	08/02/2009 17:30	08/02/2009 17:40	7.95
CP	Ocean Phoenix	08/02/2009 18:50	08/02/2009 21:15	59.43
CP	Ocean Phoenix	08/05/2009 06:05	08/05/2009 09:45	44.28
CP	Ocean Phoenix	08/06/2009 00:30	08/06/2009 03:30	55.40
CP	Ocean Phoenix	08/06/2009 17:25	08/06/2009 19:00	49.49
CP	Ocean Phoenix	08/07/2009 14:15	08/07/2009 19:40	49.45
CP	Ocean Rover	01/24/2009 16:25	01/24/2009 17:55	21.58
CP	Ocean Rover	01/26/2009 04:20	01/26/2009 09:30	57.73
CP	Ocean Rover	01/28/2009 10:45	01/28/2009 15:40	80.51
CP	Ocean Rover	02/01/2009 17:35	02/01/2009 21:25	61.25
CP	Ocean Rover	02/02/2009 06:25	02/02/2009 10:15	20.08
CP	Ocean Rover	02/02/2009 17:30	02/02/2009 21:45	38.00
CP	Ocean Rover	02/11/2009 16:55	02/11/2009 17:05	0.00
CP	Ocean Rover	02/13/2009 02:40	02/13/2009 05:20	77.98
CP	Ocean Rover	02/14/2009 03:10	02/14/2009 06:40	71.77
CP	Ocean Rover	02/15/2009 17:20	02/15/2009 20:40	140.29
CP	Ocean Rover	02/16/2009 02:15	02/16/2009 05:40	120.80
CP	Ocean Rover	02/17/2009 05:25	02/17/2009 11:20	65.99
CP	Ocean Rover	02/18/2009 03:55	02/18/2009 08:45	69.12
CP	Ocean Rover	03/03/2009 07:50	03/03/2009 16:30	98.59
CP	Ocean Rover	03/04/2009 07:10	03/04/2009 11:30	124.28
CP	Ocean Rover	03/12/2009 10:25	03/12/2009 13:20	115.64
CP	Ocean Rover	03/18/2009 13:15	03/18/2009 15:00	112.35

Appendix 1. Continued

Sector	Vessel	Start of Haul	End of Haul	Pollock Weight (Metric tons)
CP	Ocean Rover	03/24/2009 23:15	03/25/2009 02:55	66.55
CVM	Pacific Challenger	02/11/2009 20:27	02/12/2009 05:45	56.47
CVM	Pacific Challenger	02/14/2009 03:30	02/14/2009 06:07	47.28
CVM	Pacific Challenger	02/22/2009 15:32	02/22/2009 20:00	40.16
CVM	Pacific Challenger	03/16/2009 00:20	03/16/2009 05:00	50.91
CVM	Pacific Challenger	03/22/2009 06:10	03/22/2009 10:15	61.04
CVM	Pacific Challenger	03/28/2009 05:30	03/28/2009 07:38	73.55
CVM	Pacific Challenger	08/15/2009 22:30	08/16/2009 09:25	57.06
CVM	Pacific Challenger	08/26/2009 07:55	08/26/2009 12:50	2.74
CVM	Pacific Fury	02/04/2009 04:50	02/04/2009 08:05	42.57
CVM	Pacific Fury	02/07/2009 07:50	02/07/2009 16:10	10.16
CVM	Pacific Fury	03/08/2009 12:20	03/08/2009 12:50	49.78
CVM	Pacific Fury	06/16/2009 10:25	06/16/2009 17:20	40.57
CVM	Pacific Fury	06/20/2009 22:50	06/21/2009 02:00	50.74
CVM	Pacific Fury	06/23/2009 03:45	06/23/2009 05:35	50.16
CVM	Pacific Fury	06/25/2009 08:30	06/25/2009 16:45	37.49
CVM	Pacific Fury	06/27/2009 22:05	06/27/2009 23:50	51.90
CVM	Pacific Fury	07/15/2009 01:45	07/15/2009 08:10	43.58
CVM	Pacific Fury	07/18/2009 21:50	07/19/2009 05:15	41.55
CVM	Pacific Fury	07/26/2009 00:45	07/26/2009 03:50	53.80
CVM	Pacific Fury	07/29/2009 04:05	07/29/2009 08:45	47.77
CVM	Pacific Fury	08/07/2009 06:48	08/07/2009 10:45	52.03
CP	Pacific Glacier	06/22/2009 13:05	06/22/2009 14:45	20.31
CP	Pacific Glacier	06/22/2009 18:25	06/22/2009 22:16	43.59
CP	Pacific Glacier	07/02/2009 16:50	07/02/2009 22:00	55.70
CP	Pacific Glacier	07/03/2009 19:40	07/04/2009 02:05	64.49
CP	Pacific Glacier	07/09/2009 03:50	07/09/2009 09:30	25.22
CP	Pacific Glacier	07/09/2009 19:45	07/10/2009 00:40	6.78
CP	Pacific Glacier	07/15/2009 15:50	07/15/2009 18:10	30.93
CP	Pacific Glacier	07/19/2009 00:05	07/19/2009 05:55	69.91
CP	Pacific Glacier	07/24/2009 03:25	07/24/2009 05:40	61.58
CP	Pacific Glacier	07/27/2009 07:25	07/27/2009 09:50	98.34
CP	Pacific Glacier	07/30/2009 14:00	07/30/2009 16:10	99.73
CP	Pacific Glacier	08/07/2009 10:50	08/07/2009 16:15	96.61
CP	Pacific Glacier	08/07/2009 22:10	08/08/2009 04:00	99.53
CP	Pacific Glacier	08/10/2009 16:00	08/10/2009 18:00	43.77
CP	Pacific Glacier	08/21/2009 11:15	08/21/2009 14:00	88.03
CP	Pacific Glacier	08/27/2009 21:30	08/28/2009 01:10	60.25
CP	Pacific Glacier	09/02/2009 07:15	09/02/2009 11:00	73.34
CP	Pacific Glacier	09/03/2009 08:00	09/03/2009 12:00	92.54
CP	Pacific Glacier	09/05/2009 17:30	09/05/2009 21:00	89.48
CP	Pacific Glacier	09/08/2009 01:15	09/08/2009 09:25	55.98
CP	Pacific Glacier	09/16/2009 18:45	09/17/2009 02:45	115.76
CVS_O	Pacific Prince	07/22/2009 03:30	07/22/2009 14:30	64.64
CVS_O	Pacific Prince	07/22/2009 21:00	07/23/2009 08:00	141.43
CVS_O	Pacific Prince	07/23/2009 09:30	07/23/2009 17:30	122.90
CVS_O	Pacific Prince	07/23/2009 19:00	07/24/2009 04:00	150.98
CVS_O	Pacific Prince	07/26/2009 11:30	07/27/2009 03:30	162.18
CVS_O	Pacific Viking	06/11/2009 06:50	06/11/2009 16:10	111.10
CVS_O	Pacific Viking	06/11/2009 18:30	06/12/2009 09:34	102.38

Appendix 1. Continued.

Sector	Vessel	Start of Haul	End of Haul	Pollock Weight (Metric tons)
CVS_O	Pacific Viking	06/12/2009 11:02	06/12/2009 12:27	40.06
CVS_O	Pacific Viking	07/27/2009 13:57	07/27/2009 23:32	16.06
CVS_O	Pacific Viking	07/28/2009 00:17	07/28/2009 14:53	62.31
CVS_O	Pacific Viking	07/28/2009 17:22	07/29/2009 09:21	64.09
CVS_O	Pacific Viking	07/29/2009 10:29	07/29/2009 16:02	37.23
CVS_O	Pacific Viking	08/23/2009 23:29	08/24/2009 00:18	61.85
CVS_O	Pacific Viking	08/24/2009 01:19	08/24/2009 08:36	88.82
CVS_O	Pacific Viking	08/24/2009 10:56	08/24/2009 17:04	70.79
CVS_O	Pacific Viking	08/25/2009 22:08	08/26/2009 02:58	14.73
CVS_O	Pacific Viking	08/26/2009 14:02	08/26/2009 18:20	9.29
CVS_O	Progress	07/18/2009 10:49	07/18/2009 11:36	67.71
CVS_O	Progress	07/18/2009 13:02	07/18/2009 14:07	73.20
CVS_O	Progress	07/18/2009 17:51	07/18/2009 18:42	52.29
CVS_O	Progress	07/19/2009 13:49	07/19/2009 14:14	0.04
CVS_O	Royal Atlantic	03/11/2009 13:08	03/11/2009 14:51	110.09
CVS_O	Royal Atlantic	03/11/2009 16:11	03/11/2009 17:11	119.90
CVS_O	Royal Atlantic	06/26/2009 00:04	06/26/2009 11:06	38.51
CVS_O	Royal Atlantic	06/26/2009 12:00	06/26/2009 15:14	37.67
CVS_O	Royal Atlantic	06/26/2009 17:22	06/26/2009 22:12	112.57
CVS_O	Royal Atlantic	06/26/2009 23:42	06/27/2009 04:47	36.44
CVS_O	Royal Atlantic	07/03/2009 16:51	07/03/2009 23:50	50.49
CVS_O	Royal Atlantic	07/04/2009 00:52	07/04/2009 08:53	69.98
CVS_O	Royal Atlantic	07/04/2009 09:57	07/04/2009 17:59	30.29
CVS_O	Royal Atlantic	07/04/2009 19:08	07/05/2009 00:17	10.10
CVS_O	Royal Atlantic	07/05/2009 20:09	07/05/2009 20:29	60.58
CP	Seattle Enterprise	02/04/2009 20:20	02/04/2009 22:40	1.35
CP	Seattle Enterprise	02/08/2009 04:00	02/08/2009 09:30	83.52
CP	Seattle Enterprise	02/19/2009 12:05	02/19/2009 13:10	91.52
CP	Seattle Enterprise	02/22/2009 23:35	02/23/2009 02:15	95.17
CP	Seattle Enterprise	03/02/2009 12:30	03/02/2009 18:20	16.24
CP	Seattle Enterprise	03/05/2009 21:10	03/05/2009 23:25	66.08
CP	Seattle Enterprise	03/06/2009 19:40	03/06/2009 21:50	76.54
CP	Seattle Enterprise	03/06/2009 22:30	03/06/2009 23:55	73.49
CP	Seattle Enterprise	03/09/2009 12:00	03/09/2009 14:45	61.66
CP	Seattle Enterprise	03/10/2009 14:30	03/10/2009 17:00	75.28
CP	Seattle Enterprise	06/30/2009 06:25	06/30/2009 09:10	75.82
CP	Seattle Enterprise	07/03/2009 00:40	07/03/2009 01:50	24.36
CP	Seattle Enterprise	07/05/2009 02:30	07/05/2009 07:50	48.97
CP	Seattle Enterprise	07/14/2009 19:40	07/15/2009 01:30	14.45
CP	Seattle Enterprise	07/15/2009 21:50	07/15/2009 23:50	94.68
CP	Seattle Enterprise	07/25/2009 03:45	07/25/2009 11:00	99.22
CP	Seattle Enterprise	07/25/2009 11:40	07/25/2009 12:35	105.23
CP	Seattle Enterprise	07/28/2009 13:10	07/28/2009 15:00	73.55
CP	Seattle Enterprise	07/31/2009 20:25	08/01/2009 01:35	73.00
CP	Seattle Enterprise	08/01/2009 15:10	08/01/2009 17:45	18.70
CP	Seattle Enterprise	08/12/2009 23:40	08/13/2009 00:20	0.00
CP	Seattle Enterprise	08/13/2009 04:25	08/13/2009 08:15	67.16
CP	Seattle Enterprise	08/15/2009 03:45	08/15/2009 04:55	59.66
CP	Seattle Enterprise	08/15/2009 09:45	08/15/2009 12:00	56.17
CP	Seattle Enterprise	08/16/2009 17:15	08/16/2009 22:20	74.98

Appendix 1. Continued.

Sector	Vessel	Start of Haul	End of Haul	Pollock Weight (Metric tons)
CP	Seattle Enterprise	08/23/2009 19:15	08/24/2009 00:45	70.95
CP	Seattle Enterprise	08/25/2009 16:40	08/25/2009 21:50	72.80
CP	Seattle Enterprise	08/29/2009 05:40	08/29/2009 09:50	11.55
CP	Seattle Enterprise	08/30/2009 17:10	08/30/2009 21:00	68.38
CP	Seattle Enterprise	09/06/2009 21:21	09/07/2009 02:40	63.17
CP	Seattle Enterprise	09/07/2009 03:15	09/07/2009 09:25	37.95
CP	Seattle Enterprise	09/10/2009 11:55	09/10/2009 12:45	80.70
CP	Seattle Enterprise	09/11/2009 19:20	09/11/2009 21:35	1.05
CVS_O	Sovereignty	02/17/2009 20:00	02/18/2009 01:55	67.17
CVS_O	Sovereignty	02/18/2009 03:30	02/18/2009 11:30	24.08
CVS_O	Sovereignty	02/18/2009 18:30	02/19/2009 01:10	41.48
CVS_O	Sovereignty	02/19/2009 02:15	02/19/2009 09:55	34.09
CVS_O	Sovereignty	02/19/2009 12:00	02/19/2009 19:05	2.28
CVS_O	Sovereignty	02/19/2009 21:30	02/20/2009 02:03	9.46
CVS_O	Sovereignty	06/18/2009 11:30	06/18/2009 17:30	123.59
CVS_O	Sovereignty	06/18/2009 20:00	06/18/2009 23:59	75.46
CVS_O	Sovereignty	06/19/2009 08:00	06/19/2009 16:30	152.11
CVS_O	Sovereignty	07/22/2009 20:30	07/23/2009 08:00	26.64
CVS_O	Sovereignty	07/23/2009 13:30	07/24/2009 07:00	33.27
CVS_O	Sovereignty	07/24/2009 09:30	07/24/2009 16:30	41.86
CVS_O	Sovereignty	07/24/2009 20:00	07/24/2009 21:45	1.85
CP	Starbound	01/26/2009 06:55	01/26/2009 12:30	15.57
CP	Starbound	02/03/2009 15:35	02/03/2009 17:15	3.69
CP	Starbound	02/05/2009 21:00	02/06/2009 00:40	92.29
CP	Starbound	02/13/2009 08:35	02/13/2009 16:30	54.59
CP	Starbound	02/21/2009 04:35	02/21/2009 09:00	56.29
CP	Starbound	02/27/2009 09:50	02/27/2009 15:40	55.60
CP	Starbound	03/02/2009 05:25	03/02/2009 06:10	95.17
CP	Starbound	03/23/2009 15:15	03/23/2009 19:23	88.57
CP	Starbound	03/23/2009 20:30	03/24/2009 02:05	35.18
CP	Starbound	03/24/2009 07:10	03/24/2009 10:10	88.30
CP	Starbound	06/11/2009 10:30	06/11/2009 13:45	75.32
CP	Starbound	06/17/2009 01:30	06/17/2009 05:35	109.08
CP	Starbound	06/23/2009 06:50	06/23/2009 07:40	2.87
CP	Starbound	06/26/2009 21:15	06/27/2009 00:30	107.71
CP	Starbound	07/07/2009 11:48	07/07/2009 14:45	102.46
CP	Starbound	07/10/2009 15:15	07/10/2009 18:50	91.56
CP	Starbound	07/14/2009 11:02	07/14/2009 17:55	70.60
CP	Starbound	07/23/2009 10:55	07/23/2009 15:00	80.14
CP	Starbound	07/26/2009 10:40	07/26/2009 13:05	84.36
CP	Starbound	07/26/2009 17:40	07/26/2009 18:15	116.91
CP	Starbound	07/27/2009 00:30	07/27/2009 02:40	90.90
CP	Starbound	07/29/2009 14:10	07/29/2009 15:50	77.32
CP	Starbound	08/04/2009 07:45	08/04/2009 13:30	93.28
CP	Starbound	08/04/2009 14:15	08/04/2009 16:10	95.84
CP	Starbound	08/05/2009 06:30	08/05/2009 11:25	51.67
CP	Starbound	08/09/2009 08:10	08/09/2009 12:45	67.27
CP	Starbound	08/10/2009 03:15	08/10/2009 06:10	107.92
CP	Starbound	08/17/2009 05:35	08/17/2009 11:30	38.44
CP	Starbound	08/18/2009 10:45	08/18/2009 15:35	91.89



Appendix 1. Continued.

Sector	Vessel	Start of Haul	End of Haul	Pollock Weight (Metric tons)
CP	Starbound	08/20/2009 14:15	08/20/2009 17:15	65.33
CP	Starbound	08/23/2009 12:40	08/23/2009 14:15	3.37
CP	Starbound	08/25/2009 07:33	08/25/2009 10:15	71.16
CP	Starbound	09/13/2009 07:05	09/13/2009 15:00	83.12
CP	Starbound	09/14/2009 06:00	09/14/2009 14:10	88.90
CP	Starbound	09/15/2009 04:15	09/15/2009 12:15	107.67
CVS_O	Starward	06/27/2009 11:50	06/27/2009 16:55	115.00
CVS_O	Starward	06/27/2009 18:15	06/28/2009 07:00	64.28
CVS_O	Storm Petrel	07/09/2009 06:30	07/09/2009 22:30	51.28
CVS_O	Storm Petrel	07/10/2009 02:00	07/10/2009 17:00	34.38
CVS_O	Storm Petrel	07/10/2009 17:45	07/11/2009 07:30	20.87
CVS_O	Storm Petrel	07/11/2009 09:00	07/11/2009 12:40	0.92
CVS_O	Storm Petrel	07/11/2009 18:15	07/12/2009 08:00	8.48
CVS_O	Storm Petrel	07/19/2009 22:40	07/19/2009 23:10	1.96
CVS_O	Storm Petrel	07/20/2009 00:02	07/20/2009 00:30	0.50
CVM	Traveler	02/14/2009 06:05	02/14/2009 08:30	35.60
CVM	Traveler	02/18/2009 15:10	02/18/2009 15:47	41.94
CVM	Traveler	02/19/2009 23:50	02/20/2009 02:00	39.80
CVM	Traveler	02/22/2009 14:43	02/22/2009 19:08	46.64
CVM	Traveler	08/01/2009 20:10	08/02/2009 09:55	54.99
CVM	Vanguard	03/16/2009 01:30	03/16/2009 06:00	68.45
CVM	Vanguard	03/17/2009 02:16	03/17/2009 06:00	60.36
CVM	Vanguard	03/17/2009 15:00	03/17/2009 23:50	61.71
CVM	Vanguard	07/01/2009 17:21	07/02/2009 03:10	64.58
CVM	Vanguard	07/13/2009 13:06	07/13/2009 17:12	57.10
CVM	Vanguard	07/22/2009 13:44	07/22/2009 21:44	63.48
CVM	Vanguard	08/04/2009 04:55	08/04/2009 12:00	64.11
CVM	Vanguard	08/11/2009 13:27	08/12/2009 02:18	69.53
CVM	Vesteraalen	01/31/2009 21:08	02/01/2009 00:00	54.99
CVM	Vesteraalen	02/01/2009 14:06	02/01/2009 17:31	54.66
CVM	Vesteraalen	02/04/2009 03:51	02/04/2009 06:35	51.70
CVM	Vesteraalen	02/08/2009 20:00	02/09/2009 08:15	10.07
CVM	Vesteraalen	02/14/2009 23:09	02/15/2009 03:40	33.68
CVM	Vesteraalen	02/16/2009 05:34	02/16/2009 11:29	45.54
CVM	Vesteraalen	02/18/2009 04:27	02/18/2009 12:39	15.48
CVS_O	Viking	03/07/2009 23:30	03/08/2009 03:30	109.55
CVS_O	Viking	03/08/2009 05:00	03/08/2009 08:00	117.87
CVS_O	Viking	03/08/2009 10:00	03/08/2009 11:30	109.80
CVS_O	Viking	08/18/2009 02:00	08/18/2009 05:30	110.00
CVS_O	Viking	08/18/2009 07:00	08/18/2009 11:00	115.00
CVS_O	Viking	08/18/2009 13:30	08/18/2009 15:45	119.95
CVS_O	Viking	08/23/2009 22:30	08/24/2009 11:15	132.66
CVS_O	Viking Explorer	03/04/2009 18:15	03/04/2009 18:40	1.07
CVS_O	Viking Explorer	03/05/2009 19:05	03/05/2009 23:30	56.97
CVS_O	Viking Explorer	03/06/2009 01:00	03/06/2009 07:15	112.44
CVS_O	Viking Explorer	03/06/2009 08:50	03/06/2009 10:25	0.97
CVS_O	Viking Explorer	03/06/2009 12:30	03/06/2009 17:35	44.94
CVS_O	Viking Explorer	07/14/2009 10:00	07/14/2009 21:30	31.14
CVS_O	Viking Explorer	07/14/2009 22:40	07/15/2009 09:10	27.44
CVS_O	Viking Explorer	07/15/2009 10:50	07/15/2009 15:20	2.01

Appendix 1. Continued.

Sector	Vessel	Start of Haul	End of Haul	Pollock Weight (Metric tons)
CVS_O	Viking Explorer	07/15/2009 18:50	07/16/2009 05:10	18.24
CVS_O	Viking Explorer	08/10/2009 09:00	08/10/2009 13:00	101.04
CVS_O	Viking Explorer	08/10/2009 14:30	08/10/2009 15:30	2.08
CVS_O	Viking Explorer	08/10/2009 20:20	08/11/2009 02:45	102.42
CVS_O	Viking Explorer	08/12/2009 22:25	08/13/2009 01:45	14.63
CVM	Western Dawn	02/10/2009 17:50	02/11/2009 00:50	49.75
CVM	Western Dawn	02/21/2009 16:45	02/21/2009 19:00	51.78
CVM	Western Dawn	03/11/2009 22:45	03/11/2009 23:45	58.20
CVM	Western Dawn	06/24/2009 06:00	06/24/2009 17:30	17.50
CVM	Western Dawn	06/28/2009 16:05	06/28/2009 18:05	52.56
CVM	Western Dawn	07/15/2009 13:10	07/15/2009 18:30	56.28
CVM	Western Dawn	08/11/2009 18:15	08/11/2009 22:20	47.39
CVS_O	Westward I	02/27/2009 20:05	02/28/2009 00:05	99.87
CVS_O	Westward I	02/28/2009 01:50	02/28/2009 08:00	63.62
CVS_O	Westward I	02/28/2009 21:00	03/01/2009 08:40	82.59
CVS_O	Westward I	06/24/2009 10:30	06/24/2009 19:15	14.97
CVS_O	Westward I	06/25/2009 00:30	06/25/2009 04:20	30.64
CVS_O	Westward I	06/25/2009 08:30	06/25/2009 14:45	30.57
CVS_O	Westward I	06/25/2009 17:20	06/25/2009 21:30	23.02
CVS_O	Westward I	07/13/2009 15:00	07/13/2009 17:10	0.43
CVS_O	Westward I	07/13/2009 22:20	07/13/2009 23:50	89.97
CVS_O	Westward I	07/14/2009 05:30	07/14/2009 09:50	13.50
CVS_O	Westward I	07/14/2009 18:10	07/14/2009 23:15	11.25
CVS_O	Westward I	07/15/2009 01:50	07/15/2009 13:45	98.96
CVS_O	Westward I	07/15/2009 15:20	07/16/2009 05:30	67.47
CVS_O	Westward I	08/18/2009 01:30	08/18/2009 03:50	99.69
CVS_O	Westward I	08/18/2009 05:20	08/18/2009 09:40	99.79
CVS_O	Westward I	08/18/2009 11:20	08/18/2009 13:35	90.72

Appendix 2. Selected trips for the closure zone audit, Bering Sea Pollock fishery, 2009.

Sector	Vessel	Start of Haul	End of Haul	Pollock Weight (Metric tons)
CVS_O	Alaskan Command	02/28/2009	03/05/2009	379.97
CVS_O	Alaskan Command	03/23/2009	03/26/2009	373.50
CVS_O	Alaskan Command	06/25/2009	06/29/2009	579.67
CVS_O	Alaskan Command	07/06/2009	07/11/2009	568.57
CVS_O	Alaskan Command	08/04/2009	08/08/2009	610.54
CVS_NO	Alaska Rose	07/24/2009	07/28/2009	373.75
CVS_O	Aldebaran	01/29/2009	01/31/2009	21.72
CVS_O	Aldebaran	08/20/2009	08/23/2009	111.23
CVS_NO	Alsea	07/12/2009	07/16/2009	438.17
CVS_NO	American Eagle	02/22/2009	02/24/2009	188.58
CVS_O	American Eagle	02/27/2009	03/02/2009	193.70
CVS_NO	American Eagle	07/03/2009	07/06/2009	73.53
CVS_NO	Anita J	02/28/2009	03/03/2009	122.80
CVS_NO	Anita J	03/08/2009	03/10/2009	220.94
CVS_NO	Anita J	06/18/2009	06/20/2009	220.81
CVS_NO	Anita J	07/15/2009	07/17/2009	56.33
CVS_NO	Anita J	08/08/2009	08/12/2009	162.67
CVS_O	Arctic Explorer	01/22/2009	01/25/2009	265.75
CVS_O	Arctic Explorer	02/06/2009	02/10/2009	187.74
CVS_O	Arctic Explorer	07/05/2009	07/07/2009	289.09
CVS_O	Arctic Explorer	07/24/2009	07/26/2009	314.31
CVS_O	Arctic Wind	07/01/2009	07/05/2009	250.09
CVS_NO	Arctic Wind	07/17/2009	07/22/2009	250.23
CVS_O	Arcturus	02/02/2009	02/02/2009	23.64
CVS_NO	Argosy	08/04/2009	08/08/2009	370.27
CVS_O	Auriga	03/15/2009	03/18/2009	558.05
CVS_O	Auriga	06/15/2009	06/19/2009	524.54
CVS_O	Aurora	08/03/2009	08/07/2009	573.57
CVS_O	Aurora	08/13/2009	08/17/2009	411.26
CVS_NO	Bering Rose	06/25/2009	06/27/2009	316.47
CVS_O	Bering Rose	07/26/2009	07/30/2009	352.49
CVS_NO	Bering Rose	08/21/2009	08/26/2009	229.61
CVS_O	Bristol Explorer	02/19/2009	02/22/2009	206.95
CVS_O	Bristol Explorer	03/03/2009	03/05/2009	347.33
CVS_O	Bristol Explorer	03/20/2009	03/22/2009	361.84
CVS_O	Caitlin Ann	08/09/2009	08/13/2009	286.07
CVS_NO	Columbia	03/09/2009	03/10/2009	166.49
CVS_NO	Columbia	03/13/2009	03/15/2009	215.52
CVS_NO	Columbia	03/16/2009	03/18/2009	228.12
CVS_NO	Columbia	07/12/2009	07/15/2009	228.60
CVS_NO	Columbia	09/05/2009	09/08/2009	250.26
CVS_O	Commodore	02/19/2009	02/21/2009	182.19
CVS_O	Commodore	02/28/2009	03/02/2009	81.98
CVS_O	Commodore	07/28/2009	07/31/2009	199.31
CVS_O	Commodore	08/19/2009	08/22/2009	163.51
CVS_O	Defender	02/26/2009	03/02/2009	543.09
CVS_O	Defender	07/07/2009	07/12/2009	707.98
CVS_O	Defender	07/31/2009	08/04/2009	684.00
CVS_O	Destination	03/05/2009	03/09/2009	440.42
CVS_O	Destination	07/13/2009	07/18/2009	486.39

Appendix 2. Continued.

Sector	Vessel	Start of Haul	End of Haul	Pollock Weight (Metric tons)
CVS_O	Dominator	02/23/2009	02/25/2009	305.40
CVS_O	Elizabeth F	02/14/2009	02/16/2009	86.35
CVS_NO	Excalibur Ii	02/03/2009	02/05/2009	99.14
CVS_NO	Excalibur Ii	02/22/2009	02/24/2009	148.51
CVS_NO	Excalibur Ii	02/26/2009	02/28/2009	150.46
CVS_NO	Excalibur Ii	06/28/2009	06/29/2009	153.89
CVS_NO	Excalibur Ii	07/04/2009	07/05/2009	28.60
CVS_NO	Excalibur Ii	07/06/2009	07/09/2009	59.21
CVS_O	Fierce Allegiance	03/16/2009	03/20/2009	374.28
CVS_O	Fierce Allegiance	07/19/2009	07/24/2009	354.36
CVS_NO	Gladiator	07/10/2009	07/12/2009	147.22
CVS_O	Golden Dawn	02/06/2009	02/09/2009	150.51
CVS_O	Golden Dawn	03/10/2009	03/12/2009	322.89
CVS_O	Golden Dawn	03/22/2009	03/24/2009	111.01
CVS_O	Golden Dawn	07/28/2009	07/31/2009	322.53
CVS_O	Golden Dawn	09/14/2009	09/17/2009	185.68
CVS_O	Golden Dawn	09/20/2009	09/24/2009	83.74
CVS_NO	Gold Rush	01/20/2009	01/22/2009	77.83
CVS_NO	Gold Rush	01/24/2009	01/25/2009	155.12
CVS_NO	Gold Rush	02/09/2009	02/11/2009	148.30
CVS_NO	Gold Rush	06/10/2009	06/11/2009	120.95
CVS_O	Great Pacific	02/24/2009	02/28/2009	181.66
CVS_O	Great Pacific	03/17/2009	03/19/2009	113.34
CVS_NO	Great Pacific	06/30/2009	07/03/2009	189.81
CVS_O	Gun-mar	02/26/2009	03/02/2009	422.22
CVS_O	Gun-mar	03/20/2009	03/24/2009	559.46
CVS_O	Gun-mar	07/22/2009	07/27/2009	589.31
CVS_NO	Hazel Lorraine	06/17/2009	06/19/2009	69.31
CVS_NO	Hazel Lorraine	07/10/2009	07/13/2009	72.11
CVS_NO	Leslie Lee	06/29/2009	07/01/2009	140.38
CVS_NO	Leslie Lee	07/11/2009	07/13/2009	127.84
CVS_NO	Lisa Melinda	02/21/2009	02/24/2009	96.93
CVS_NO	Majesty	06/18/2009	06/22/2009	167.87
CVS_O	Majesty	07/07/2009	07/08/2009	178.39
CVS_O	Majesty	07/12/2009	07/13/2009	167.55
CVS_O	Majesty	09/25/2009	09/26/2009	1.54
CVS_NO	Marcy J	06/16/2009	06/18/2009	127.78
CVS_NO	Miss Berdie	02/21/2009	02/24/2009	96.70
CVS_NO	Miss Berdie	03/04/2009	03/05/2009	91.68
CVS_O	Morning Star	03/02/2009	03/06/2009	380.05
CVS_O	Morning Star	06/24/2009	06/28/2009	391.93
CVS_O	Morning Star	08/23/2009	08/27/2009	335.96
CVS_O	Morning Star	09/06/2009	09/09/2009	330.24
CVS_O	Northern Patriot	03/21/2009	03/23/2009	395.02
CVS_O	Northern Patriot	07/25/2009	07/28/2009	367.68
CVS_O	Northern Patriot	08/13/2009	08/16/2009	328.02
CVS_O	Northwest Explorer	08/06/2009	08/09/2009	421.18
CVS_O	Ocean Hope 3	03/02/2009	03/05/2009	64.59
CVS_O	Ocean Hope 3	07/06/2009	07/08/2009	70.60
CVS_O	Pacific Prince	07/22/2009	07/26/2009	479.87

Appendix 2. Continued.

Sector	Vessel	Start of Haul	End of Haul	Pollock Weight (Metric tons)
CVS_NO	Pacific Ram	01/22/2009	01/24/2009	22.78
CVS_NO	Pacific Ram	01/25/2009	01/26/2009	117.74
CVS_O	Pacific Viking	06/11/2009	06/13/2009	253.60
CVS_O	Pacific Viking	07/27/2009	07/30/2009	183.88
CVS_O	Pacific Viking	08/23/2009	08/25/2009	220.89
CVS_O	Pacific Viking	08/25/2009	08/27/2009	24.21
CVS_NO	Pegasus	03/24/2009	03/26/2009	95.51
CVS_NO	Poseidon	02/15/2009	02/17/2009	218.71
CVS_NO	Poseidon	02/23/2009	02/25/2009	110.73
CVS_NO	Poseidon	09/14/2009	09/16/2009	231.71
CVS_NO	Predator	07/26/2009	07/30/2009	65.88
CVS_NO	Progress	02/24/2009	02/28/2009	164.22
CVS_O	Progress	07/18/2009	07/20/2009	192.86
CVS_NO	Raven	02/16/2009	02/17/2009	120.07
CVS_NO	Royal Atlantic	02/08/2009	02/10/2009	187.51
CVS_O	Royal Atlantic	03/11/2009	03/13/2009	229.60
CVS_O	Royal Atlantic	06/26/2009	06/28/2009	233.66
CVS_O	Royal Atlantic	07/03/2009	07/07/2009	220.56
CVS_NO	Seadawn	03/20/2009	03/23/2009	317.99
CVS_NO	Seadawn	08/05/2009	08/08/2009	297.03
CVS_NO	Seeker	03/23/2009	03/26/2009	132.01
CVS_NO	Seeker	08/28/2009	08/31/2009	129.19
CVS_NO	Seeker	10/02/2009	10/03/2009	134.28
CVS_O	Sovereignty	02/17/2009	02/20/2009	206.98
CVS_O	Sovereignty	06/18/2009	06/21/2009	349.84
CVS_O	Sovereignty	07/22/2009	07/25/2009	102.30
CVS_NO	Starfish	06/24/2009	06/27/2009	289.03
CVS_NO	Starfish	07/22/2009	07/26/2009	271.48
CVS_NO	Starfish	08/01/2009	08/05/2009	287.77
CVS_NO	Starward	03/30/2009	04/01/2009	227.41
CVS_O	Starward	06/23/2009	06/27/2009	225.17
CVS_O	Storm Petrel	07/09/2009	07/12/2009	115.29
CVS_O	Storm Petrel	07/19/2009	07/20/2009	3.76
CVS_NO	Storm Petrel	07/23/2009	07/24/2009	64.12
CVS_NO	Storm Petrel	08/21/2009	08/24/2009	255.99
CVS_NO	Topaz	06/17/2009	06/19/2009	128.38
CVS_O	Viking	03/07/2009	03/09/2009	335.54
CVS_O	Viking	08/18/2009	08/23/2009	352.76
CVS_O	Viking Explorer	03/04/2009	03/08/2009	193.72
CVS_NO	Viking Explorer	03/14/2009	03/17/2009	210.23
CVS_O	Viking Explorer	07/14/2009	07/17/2009	80.57
CVS_O	Viking Explorer	08/10/2009	08/13/2009	221.48
CVS_O	Westward I	02/27/2009	03/03/2009	214.35
CVS_O	Westward I	06/24/2009	06/27/2009	296.36
CVS_O	Westward I	07/13/2009	07/18/2009	280.06
CVS_O	Westward I	08/18/2009	08/22/2009	301.43

Appendix 3: Logbook entry for violation, 11 July 2009.

2009B-46

Date (M-D-Y): 7-11-09 PAGE 76

OBSERVEK INF-UKRAIKUN  
OBSERVER NAME AND CRUISE #  
OBSERVER'S NAME AND CRUISE #

OBSERVER'S NAME AND CRUISE #

TOWAL GEAR ONLY (Circle one) RKCSA  
COBLZ

FEDERAL REPORTING AREA 51

CREW SIZE 4

REACH

CATCHER VESSEL DFL  
GROUNDFISH  
TRAWL GEAR

MANAGEMENT PROGRAM  
COO  Ekempted   
Research  AIP

INACTIVE  REACH

GEAR TYPE (circle one) (Multiple trawl)

START END

HAUL NO. 105

TIME OF GEAR DEPLOYMENT 1345

BEGIN POSITION OF HAUL  
LATITUDE 55 13

LONGITUDE 165 05

AVE SEA DEPTH (Circle M or F) 59

ARE GEAR DEPTH (Circle M or F) 49

DATE AND TIME OF GEAR RETRIEVAL 2233

END POSITION OF HAUL  
LATITUDE 55 13

LONGITUDE 165 00.5

TARGET SPECIES CODE 270

TOTAL HAUL WEIGHT (lbs or kg) 85

CATCH BY HAUL

CATCH DELIVERY INFORMATION  
CHECK HERE IF DELIVERIES ARE UNSORTED FOR ENDS  
CHECK HERE IF DELIVERIES ARE PRESORTED AT SEA IF FISH PRESORTED, INDICATE WHOLE DISCARDS AND DISPOSITION  
For groundfish and Pacific herring, check box or for Pacific halibut, Pacific salmon, King crab, and Trawl crab, record a number

SPECIES CODE 121

PRODUCT CODE 98

BALANCE FORWARD 0

DAILY TOTAL 1

CARD/DISPOSITION

01/28/2010 18:05 2064637371 WSI  
SEP-25-2009 09:07  
PAGE 03/12 907486588 P.001

Appendix 4. Candidate violations and verdicts by ABR and Sea State, Inc. for a selected subset (10% vessel/day catch) of the Bering Sea pollock fishery, 2009. The names of vessels associated with potential violations have been removed pending final resolution of the cases.

Vessel	Observation Date/Time	ABR Verdict	Sea State Verdict
Alaskan Command	2009-03-03 15:51:00	excluded due to high sustained speed	excluded
Alaskan Command	2009-03-03 16:21:00	excluded due to high sustained speed	excluded
Alaskan Command	2009-03-03 16:52:00	excluded due to high sustained speed	excluded
Alaskan Command	2009-07-06 07:17:00	exempt due to tier status	excluded
Alaskan Command	2009-07-06 07:47:00	exempt due to tier status	excluded
Alaskan Command	2009-07-06 08:17:00	exempt due to tier status	excluded
Alaskan Command	2009-07-06 09:00:00	exempt due to tier status	excluded
Alaskan Command	2009-07-09 11:00:00	exempt due to tier status	excluded
Alaskan Command	2009-07-09 11:30:00	exempt due to tier status	excluded
Alaskan Command	2009-07-09 12:00:00	exempt due to tier status	excluded
Aldebaran	2009-01-30 22:28:00	excluded due to high sustained speed	excluded
Aldebaran	2009-01-30 22:58:00	excluded due to high sustained speed	excluded
Aldebaran	2009-01-30 23:28:00	excluded due to high sustained speed	excluded
Aldebaran	2009-01-30 23:58:00	excluded due to high sustained speed	excluded
American Eagle	2009-02-23 17:40:00	exempt due to tier status	excluded
American Eagle	2009-02-23 18:10:00	exempt due to tier status	excluded
American Eagle	2009-02-23 18:40:00	exempt due to tier status	excluded
American Eagle	2009-02-23 19:10:00	exempt due to tier status	excluded
American Eagle	2009-02-23 19:40:00	exempt due to tier status	excluded
American Eagle	2009-02-23 20:10:00	exempt due to tier status	excluded
American Eagle	2009-02-23 20:40:00	exempt due to tier status	excluded
American Eagle	2009-02-23 21:10:00	exempt due to tier status	excluded
American Eagle	2009-02-23 21:40:00	exempt due to tier status	excluded
American Eagle	2009-02-23 22:10:00	exempt due to tier status	excluded
American Eagle	2009-02-23 22:40:00	exempt due to tier status	excluded
American Eagle	2009-02-23 23:10:00	excluded due to high sustained speed	excluded by manual review: vessel running
American Eagle	2009-02-23 23:40:00	exempt due to tier status	excluded
American Eagle	2009-03-01 04:58:00	excluded due to high sustained speed	excluded
American Eagle	2009-03-01 05:28:00	excluded due to high sustained speed	excluded
American Eagle	2009-03-01 05:58:00	excluded due to high sustained speed	excluded
American Eagle	2009-03-01 06:28:00	excluded due to high sustained speed	excluded
American Eagle	2009-03-01 06:56:00	excluded due to high sustained speed	excluded
American Eagle	2009-03-01 07:26:00	excluded due to high sustained speed	excluded

Appendix 4. Continued.

Vessel	Observation Date/Time	ABR Verdict	Sea State Verdict
American Eagle	2009-03-01 07:56:00	excluded due to high sustained speed	excluded
American Eagle	2009-03-01 08:26:00	excluded due to high sustained speed	excluded
Anita J	2009-02-28 00:36:00	excluded due to high sustained speed	excluded
Anita J	2009-02-28 01:06:00	excluded due to high sustained speed	excluded
Anita J	2009-02-28 01:36:00	excluded due to high sustained speed	excluded
Anita J	2009-02-28 02:06:00	excluded due to high sustained speed	excluded
Anita J	2009-02-28 02:36:00	excluded due to high sustained speed	excluded
Anita J	2009-02-28 03:06:00	excluded due to high sustained speed	excluded
Anita J	2009-02-28 03:36:00	excluded due to high sustained speed	excluded
Anita J	2009-02-28 04:06:00	excluded due to high sustained speed	excluded
Anita J	2009-02-28 04:36:00	excluded due to high sustained speed	excluded
Anita J	2009-03-02 17:00:00	excluded due to high sustained speed	excluded
Anita J	2009-03-02 17:30:00	excluded due to high sustained speed	excluded
Anita J	2009-03-02 18:00:00	excluded due to high sustained speed	excluded
Anita J	2009-03-02 18:30:00	excluded due to high sustained speed	excluded
Anita J	2009-03-02 19:00:00	excluded due to high sustained speed	excluded
Anita J	2009-03-02 19:30:00	excluded due to high sustained speed	excluded
Anita J	2009-03-02 20:00:00	excluded due to high sustained speed	excluded
Anita J	2009-07-15 03:20:00	excluded due to high sustained speed	excluded
Anita J	2009-07-16 13:48:00	excluded by manual review: vessel running	excluded by logbook review: not fishing
Anita J	2009-07-16 14:18:00	excluded due to high sustained speed	excluded by logbook review: not fishing
Anita J	2009-07-16 14:48:00	excluded due to high sustained speed	excluded by logbook review: not fishing
Anita J	2009-07-16 15:18:00	excluded due to high sustained speed	excluded by logbook review: not fishing
Anita J	2009-07-16 15:46:00	excluded due to high sustained speed	excluded



Appendix 4. Continued.

Vessel	Observation Date/Time	ABR Verdict	Sea State Verdict
Arctic Explorer	2009-02-06 12:36:00	excluded due to high sustained speed	excluded
Arctic Explorer	2009-02-06 13:06:00	excluded due to high sustained speed	excluded
Arctic Explorer	2009-02-06 13:36:00	excluded due to high sustained speed	excluded
Arctic Explorer	2009-02-06 14:06:00	excluded due to high sustained speed	excluded
Arctic Explorer	2009-02-06 14:36:00	excluded due to high sustained speed	excluded
Arctic Explorer	2009-02-06 15:06:00	excluded due to high sustained speed	excluded
Arctic Explorer	2009-02-09 06:30:00	excluded due to high sustained speed	excluded
Arctic Explorer	2009-02-09 07:00:00	excluded due to high sustained speed	excluded
Arctic Explorer	2009-02-09 07:30:00	excluded due to high sustained speed	excluded
Auriga	2009-03-15 00:14:00	exempt due to tier status	excluded
Auriga	2009-03-15 00:44:00	exempt due to tier status	excluded
Auriga	2009-03-15 01:14:00	exempt due to tier status	excluded
Auriga	2009-03-16 20:04:00	exempt due to tier status	excluded
Auriga	2009-03-16 20:36:00	exempt due to tier status	excluded
Auriga	2009-03-16 21:06:00	exempt due to tier status	excluded
Auriga	2009-03-16 21:36:00	exempt due to tier status	excluded
Auriga	2009-03-16 22:06:00	exempt due to tier status	excluded
Auriga	2009-03-16 22:36:00	exempt due to tier status	excluded
Aurora	2009-08-16 15:44:00	exempt due to tier status	excluded
Aurora	2009-08-16 16:14:00	exempt due to tier status	excluded
Aurora	2009-08-16 16:44:00	exempt due to tier status	excluded
Aurora	2009-08-16 17:14:00	exempt due to tier status	excluded
Aurora	2009-08-16 17:44:00	exempt due to tier status	excluded
Aurora	2009-08-16 18:14:00	exempt due to tier status	excluded
Aurora	2009-08-16 18:44:00	exempt due to tier status	excluded
Aurora	2009-08-16 19:14:00	exempt due to tier status	excluded
Aurora	2009-08-16 19:44:00	exempt due to tier status	excluded
Aurora	2009-08-16 20:14:00	exempt due to tier status	excluded
Aurora	2009-08-16 20:44:00	exempt due to tier status	excluded
Aurora	2009-08-16 21:14:00	exempt due to tier status	excluded
Aurora	2009-08-16 21:44:00	exempt due to tier status	excluded
Aurora	2009-08-16 22:14:00	exempt due to tier status	excluded
Aurora	2009-08-16 22:44:00	exempt due to tier status	excluded
Aurora	2009-08-16 23:14:00	exempt due to tier status	excluded
Aurora	2009-08-16 23:44:00	exempt due to tier status	excluded
Bering Rose	2009-08-25 22:00:00	exempt due to tier status	excluded
Bering Rose	2009-08-25 22:30:00	exempt due to tier status	excluded
Bering Rose	2009-08-25 23:00:00	exempt due to tier status	excluded
Bering Rose	2009-08-25 23:30:00	exempt due to tier status	excluded
Bering Rose	2009-08-26 00:00:00	exempt due to tier status	excluded

Appendix 4. Continued.

Vessel	Observation Date/Time	ABR Verdict	Sea State Verdict
Columbia	2009-03-14 14:30:00	excluded due to high sustained speed	excluded
Columbia	2009-03-17 21:22:00	excluded due to high sustained speed	excluded
Columbia	2009-07-14 18:48:00	excluded: logbook review, not fishing (retrieval time 17:40)	excluded by logbook review: not fishing
Columbia	2009-07-14 19:48:00	excluded by manual review: vessel running	excluded by logbook review: not fishing
Columbia	2009-07-14 20:48:00	excluded due to high sustained speed	excluded by logbook review: not fishing
Columbia	2009-07-14 21:48:00	excluded due to high sustained speed	excluded by logbook review: not fishing
Columbia	2009-07-14 22:48:00	excluded due to high sustained speed	excluded by logbook review: not fishing
Columbia	2009-07-14 23:48:00	excluded due to high sustained speed	excluded
Columbia	2009-09-05 09:46:00	excluded by buffer	excluded by logbook review: not fishing
Columbia	2009-09-05 20:46:00	excluded by buffer	excluded by logbook review: not fishing
Commodore	2009-02-19 04:16:00	exempt due to tier status	excluded
Commodore	2009-02-19 04:46:00	exempt due to tier status	excluded
Commodore	2009-02-19 06:46:00	excluded by buffer	excluded
Commodore	2009-02-19 07:16:00	exempt due to tier status	excluded
Commodore	2009-02-19 07:46:00	exempt due to tier status	excluded
Commodore	2009-02-19 08:16:00	exempt due to tier status	excluded
Commodore	2009-02-19 09:16:00	exempt due to tier status	excluded
Commodore	2009-02-19 09:46:00	exempt due to tier status	excluded
Commodore	2009-02-19 10:16:00	exempt due to tier status	excluded
Commodore	2009-02-19 10:46:00	exempt due to tier status	excluded
Commodore	2009-02-19 11:16:00	exempt due to tier status	excluded
Commodore	2009-02-19 11:46:00	exempt due to tier status	excluded
Commodore	2009-02-19 12:16:00	exempt due to tier status	exempt due to tier status
Commodore	2009-02-19 12:46:00	exempt due to tier status	exempt due to tier status
Commodore	2009-02-19 13:16:00	exempt due to tier status	exempt due to tier status
Commodore	2009-02-19 13:46:00	exempt due to tier status	exempt due to tier status
Commodore	2009-02-19 14:16:00	exempt due to tier status	exempt due to tier status
Commodore	2009-02-19 14:46:00	exempt due to tier status	exempt due to tier status
Commodore	2009-02-19 15:16:00	exempt due to tier status	exempt due to tier status
Commodore	2009-02-19 15:46:00	exempt due to tier status	excluded
Commodore	2009-02-19 16:16:00	exempt due to tier status	excluded
Commodore	2009-02-19 16:46:00	exempt due to tier status	excluded
Commodore	2009-02-19 17:16:00	exempt due to tier status	excluded
Commodore	2009-02-19 17:46:00	exempt due to tier status	exempt due to tier status
Commodore	2009-02-19 18:16:00	exempt due to tier status	exempt due to tier status
Commodore	2009-02-19 18:46:00	exempt due to tier status	exempt due to tier status
Commodore	2009-02-19 19:16:00	exempt due to tier status	exempt due to tier status
Commodore	2009-02-19 19:46:00	exempt due to tier status	exempt due to tier status

Appendix 4. Continued.

Vessel	Observation Date/Time	ABR Verdict	Sea State Verdict
Commodore	2009-02-19 20:16:00	exempt due to tier status	exempt due to tier status
Commodore	2009-02-19 20:44:00	exempt due to tier status	exempt due to tier status
Commodore	2009-02-19 21:14:00	exempt due to tier status	exempt due to tier status
Commodore	2009-02-19 21:44:00	exempt due to tier status	exempt due to tier status
Commodore	2009-02-19 22:14:00	exempt due to tier status	exempt due to tier status
Commodore	2009-02-19 22:44:00	exempt due to tier status	exempt due to tier status
Commodore	2009-02-19 23:14:00	exempt due to tier status	exempt due to tier status
Commodore	2009-02-19 23:44:00	exempt due to tier status	exempt due to tier status
Commodore	2009-02-20 00:14:00	exempt due to tier status	exempt due to tier status
Commodore	2009-02-20 00:44:00	exempt due to tier status	exempt due to tier status
Commodore	2009-02-20 01:14:00	exempt due to tier status	exempt due to tier status
Commodore	2009-02-20 01:44:00	exempt due to tier status	exempt due to tier status
Commodore	2009-02-20 02:14:00	exempt due to tier status	exempt due to tier status
Commodore	2009-02-20 02:44:00	exempt due to tier status	exempt due to tier status
Commodore	2009-02-20 03:14:00	exempt due to tier status	exempt due to tier status
Commodore	2009-02-20 03:44:00	exempt due to tier status	exempt due to tier status
Commodore	2009-02-20 04:14:00	exempt due to tier status	exempt due to tier status
Commodore	2009-02-20 04:44:00	exempt due to tier status	exempt due to tier status
Commodore	2009-02-20 05:14:00	exempt due to tier status	exempt due to tier status
Commodore	2009-02-20 05:44:00	exempt due to tier status	exempt due to tier status
Commodore	2009-02-20 06:14:00	exempt due to tier status	exempt due to tier status
Commodore	2009-02-20 06:44:00	exempt due to tier status	excluded
Commodore	2009-02-20 07:14:00	exempt due to tier status	excluded
Commodore	2009-02-20 07:44:00	exempt due to tier status	excluded
Commodore	2009-02-20 08:14:00	exempt due to tier status	excluded
Commodore	2009-02-20 08:44:00	exempt due to tier status	excluded
Commodore	2009-02-20 09:14:00	exempt due to tier status	excluded
Commodore	2009-02-20 09:44:00	exempt due to tier status	exempt due to tier status
Commodore	2009-02-20 10:14:00	exempt due to tier status	exempt due to tier status
Commodore	2009-02-20 10:44:00	exempt due to tier status	exempt due to tier status
Commodore	2009-02-20 11:14:00	exempt due to tier status	exempt due to tier status
Commodore	2009-02-20 11:44:00	exempt due to tier status	exempt due to tier status
Commodore	2009-02-20 12:14:00	exempt due to tier status	exempt due to tier status
Commodore	2009-02-20 12:44:00	exempt due to tier status	exempt due to tier status
Commodore	2009-02-20 13:14:00	exempt due to tier status	excluded
Commodore	2009-02-20 13:44:00	exempt due to tier status	excluded
Commodore	2009-02-20 14:14:00	exempt due to tier status	excluded
Commodore	2009-02-20 14:44:00	exempt due to tier status	excluded
Commodore	2009-02-20 15:14:00	exempt due to tier status	exempt due to tier status
Commodore	2009-02-20 15:44:00	exempt due to tier status	exempt due to tier status
Commodore	2009-02-20 18:42:00	excluded due to high sustained speed	excluded
Commodore	2009-02-20 19:12:00	excluded due to high sustained speed	excluded
Commodore	2009-02-20 19:42:00	excluded due to high sustained speed	excluded
Commodore	2009-02-20 20:12:00	exempt due to tier status	excluded
Commodore	2009-07-29 13:36:00	excluded due to high sustained speed	excluded

Appendix 4. Continued.

Vessel	Observation Date/Time	ABR Verdict	Sea State Verdict
Commodore	2009-07-29 14:06:00	excluded due to high sustained speed	excluded
Destination	2009-03-05 08:30:00	exempt due to tier status	excluded
Destination	2009-03-05 09:00:00	exempt due to tier status	excluded
Destination	2009-03-05 09:30:00	exempt due to tier status	excluded
Destination	2009-03-05 10:00:00	exempt due to tier status	excluded
Destination	2009-03-05 10:30:00	exempt due to tier status	excluded
Destination	2009-03-05 11:00:00	excluded by buffer	excluded
Excalibur Ii	2009-02-22 00:56:00	exempt due to tier status	excluded
Excalibur Ii	2009-02-22 01:54:00	exempt due to tier status	excluded
Golden Dawn	2009-02-06 09:04:00	excluded due to high sustained speed	excluded
Golden Dawn	2009-02-06 09:34:00	excluded due to high sustained speed	excluded
Golden Dawn	2009-02-06 10:04:00	excluded due to high sustained speed	excluded
Golden Dawn	2009-02-06 10:34:00	excluded due to high sustained speed	excluded
Golden Dawn	2009-02-06 11:04:00	excluded due to high sustained speed	excluded
Golden Dawn	2009-02-06 11:34:00	excluded by manual review: vessel running	excluded
Golden Dawn	2009-02-06 12:04:00	excluded by manual review: vessel running	excluded
Golden Dawn	2009-03-11 20:18:00	excluded due to high sustained speed	excluded
Golden Dawn	2009-09-16 15:02:00	excluded due to high sustained speed	excluded
Golden Dawn	2009-09-16 15:32:00	excluded due to high sustained speed	excluded
Golden Dawn	2009-09-16 16:02:00	excluded due to high sustained speed	excluded
Golden Dawn	2009-09-16 16:32:00	excluded due to high sustained speed	excluded
Golden Dawn	2009-09-16 17:02:00	excluded due to high sustained speed	excluded
Golden Dawn	2009-09-16 17:32:00	excluded due to high sustained speed	excluded
Golden Dawn	2009-09-16 18:02:00	excluded due to high sustained speed	excluded
Golden Dawn	2009-09-16 18:32:00	excluded due to high sustained speed	excluded
Golden Dawn	2009-09-16 19:02:00	excluded due to high sustained speed	excluded
Gold Rush	2009-02-10 18:56:00	excluded due to high sustained speed	excluded by manual review: vessel running
Gold Rush	2009-02-10 19:22:00	excluded due to high sustained speed	excluded by manual review: vessel running

Appendix 4. Continued.

Vessel	Observation Date/Time	ABR Verdict	Sea State Verdict
Gold Rush	2009-02-10 19:28:45	excluded by manual review: vessel running	excluded by manual review: vessel running
Gold Rush	2009-02-10 20:00:00	excluded by manual review: vessel running	excluded by manual review: vessel running
Gold Rush	2009-02-10 20:26:00	excluded due to high sustained speed	excluded by manual review: vessel running
Gold Rush	2009-02-10 21:35:06	excluded due to high sustained speed	excluded by manual review: vessel running
Gold Rush	2009-02-10 22:12:00	excluded due to high sustained speed	excluded by manual review: vessel running
Gold Rush	2009-02-10 22:40:00	excluded due to high sustained speed	excluded by manual review: vessel running
Gold Rush	2009-02-10 23:22:00	excluded due to high sustained speed	excluded by manual review: vessel running
Gold Rush	2009-02-10 23:39:35	excluded by manual review: vessel running	excluded by manual review: vessel running
Gold Rush	2009-02-10 23:58:00	excluded by manual review: vessel running	excluded by manual review: vessel running
Great Pacific	2009-02-27 15:30:00	exempt due to tier status	excluded
Great Pacific	2009-02-27 16:00:00	exempt due to tier status	excluded
Great Pacific	2009-02-27 16:30:00	exempt due to tier status	excluded
Great Pacific	2009-02-27 17:00:00	exempt due to tier status	excluded
Great Pacific	2009-02-27 17:30:00	exempt due to tier status	excluded
Great Pacific	2009-02-27 18:00:00	exempt due to tier status	excluded
Great Pacific	2009-02-27 18:00:00	exempt due to tier status	excluded
Great Pacific	2009-02-27 18:30:00	exempt due to tier status	excluded
Great Pacific	2009-02-27 19:00:00	exempt due to tier status	excluded
Great Pacific	2009-02-27 19:30:00	exempt due to tier status	excluded
Great Pacific	2009-02-27 20:00:00	excluded by buffer	excluded
Gun-mar	2009-02-26 13:22:00	exempt due to tier status	excluded
Gun-mar	2009-02-26 13:52:00	exempt due to tier status	excluded
Gun-mar	2009-02-26 14:22:00	exempt due to tier status	excluded
Gun-mar	2009-02-26 14:52:00	exempt due to tier status	excluded
Gun-mar	2009-02-26 15:22:00	exempt due to tier status	excluded
Gun-mar	2009-02-26 15:52:00	exempt due to tier status	excluded
Gun-mar	2009-02-26 16:22:00	exempt due to tier status	excluded
Gun-mar	2009-03-01 13:46:00	excluded due to high sustained speed	excluded
Gun-mar	2009-03-01 14:16:00	excluded due to high sustained speed	excluded
Gun-mar	2009-03-01 14:46:00	excluded due to high sustained speed	excluded
Gun-mar	2009-03-01 15:16:00	excluded due to high sustained speed	excluded
Gun-mar	2009-03-01 15:46:00	excluded due to high sustained speed	excluded
Gun-mar	2009-03-01 16:16:00	excluded due to high sustained speed	excluded

Appendix 4. Continued.

Vessel	Observation Date/Time	ABR Verdict	Sea State Verdict
Gun-mar	2009-03-01 16:46:00	excluded due to high sustained speed	excluded
Hazel Lorraine	2009-07-10 03:58:00	excluded due to high sustained speed	excluded by manual review: vessel running
Hazel Lorraine	2009-07-10 04:32:00	excluded due to high sustained speed	excluded by manual review: vessel running
Leslie Lee	2009-07-11 18:18:00	possible violation: 674m inside closure while fishing by log-book	possible violation
Leslie Lee	2009-07-11 22:40:39	excluded by buffer	excluded by logbook review: not fishing
Lisa Melinda	2009-02-21 00:23:14	excluded by manual review: vessel running	excluded by manual review: vessel running
Lisa Melinda	2009-02-21 00:52:00	excluded by manual review: vessel running	excluded by manual review: vessel running
Lisa Melinda	2009-02-21 01:33:39	excluded by manual review: vessel running	excluded by manual review: vessel running
Lisa Melinda	2009-02-21 02:09:28	excluded by manual review: vessel running	excluded by manual review: vessel running
Lisa Melinda	2009-02-21 02:09:52	excluded by manual review: vessel running	excluded by manual review: vessel running
Lisa Melinda	2009-02-21 02:38:00	excluded by manual review: vessel running	excluded by manual review: vessel running
Lisa Melinda	2009-02-21 03:08:00	excluded by manual review: vessel running	excluded by manual review: vessel running
Lisa Melinda	2009-02-21 03:40:00	excluded by manual review: vessel running	excluded by manual review: vessel running
Lisa Melinda	2009-02-21 04:14:00	excluded by manual review: vessel running	excluded by manual review: vessel running
Lisa Melinda	2009-02-21 04:51:43	excluded by manual review: vessel running	excluded by manual review: vessel running
Lisa Melinda	2009-02-21 05:18:00	excluded by manual review: vessel running	excluded by manual review: vessel running
Lisa Melinda	2009-02-22 00:38:00	excluded due to high sustained speed	excluded
Lisa Melinda	2009-02-22 01:10:00	excluded due to high sustained speed	excluded
Lisa Melinda	2009-02-22 01:40:00	excluded due to high sustained speed	excluded
Lisa Melinda	2009-02-22 02:10:00	excluded by manual review: vessel running	excluded
Lisa Melinda	2009-02-22 02:10:43	excluded by manual review: vessel running	excluded
Miss Berdie	2009-02-21 20:28:00	exempt due to tier status	excluded
Miss Berdie	2009-02-21 21:02:00	exempt due to tier status	excluded
Miss Berdie	2009-02-21 21:34:00	exempt due to tier status	excluded
Miss Berdie	2009-02-21 22:04:00	exempt due to tier status	excluded
Miss Berdie	2009-02-21 22:05:03	exempt due to tier status	excluded
Miss Berdie	2009-02-21 23:06:00	exempt due to tier status	excluded

Appendix 4. Continued.

Vessel	Observation Date/Time	ABR Verdict	Sea State Verdict
Miss Berdie	2009-02-21 23:38:00	exempt due to tier status	excluded
Miss Berdie	2009-02-22 00:08:00	exempt due to tier status	excluded
Miss Berdie	2009-03-04 23:21:43	excluded by manual review: vessel running	excluded by manual review: vessel running
Morning Star	2009-03-02 02:16:00	excluded due to high sustained speed	excluded
Morning Star	2009-03-02 02:46:00	excluded due to high sustained speed	excluded
Morning Star	2009-03-02 18:44:00	exempt due to tier status	excluded
Morning Star	2009-03-02 19:14:00	exempt due to tier status	excluded
Morning Star	2009-08-26 21:56:00	exempt due to tier status	excluded
Morning Star	2009-08-26 22:26:00	exempt due to tier status	excluded
Morning Star	2009-08-26 22:56:00	exempt due to tier status	excluded
Morning Star	2009-08-26 23:26:00	exempt due to tier status	excluded
Morning Star	2009-08-26 23:56:00	exempt due to tier status	excluded
Northern Patriot	2009-03-22 18:38:00	excluded due to high sustained speed	excluded
Northern Patriot	2009-03-22 19:08:00	excluded due to high sustained speed	excluded
Ocean Hope 3	2009-03-02 00:52:00	excluded by manual review: vessel running	excluded
Ocean Hope 3	2009-03-02 01:44:00	excluded by manual review: vessel running	excluded
Ocean Hope 3	2009-03-04 10:16:00	excluded due to high sustained speed	excluded
Ocean Hope 3	2009-03-04 11:16:00	excluded by manual review: vessel running	excluded
Ocean Rover	2009-03-04 11:30:00	exempt due to tier status	excluded
Pacific Viking	2009-08-26 04:20:00	excluded due to high sustained speed	excluded: observed not fishing
Pacific Viking	2009-08-26 05:20:00	excluded due to high sustained speed	excluded: observed not fishing
Pacific Viking	2009-08-26 06:20:00	excluded due to high sustained speed	excluded: observed not fishing
Pacific Viking	2009-08-26 07:20:00	excluded due to high sustained speed	excluded
Pacific Viking	2009-08-26 10:18:00	excluded by manual review: vessel running	excluded: observed not fishing
Pacific Viking	2009-08-26 11:18:00	excluded due to high sustained speed	excluded: observed not fishing
Pacific Viking	2009-08-26 12:18:00	excluded due to high sustained speed	excluded: observed not fishing
Poseidon	2009-02-15 00:50:00	excluded by manual review: vessel running	excluded
Poseidon	2009-02-15 01:20:00	excluded due to high sustained speed	excluded
Poseidon	2009-02-24 14:56:00	excluded by buffer	excluded
Poseidon	2009-02-24 15:26:00	exempt due to tier status	excluded
Poseidon	2009-02-24 15:56:00	exempt due to tier status	excluded

Appendix 4. Continued.

Vessel	Observation Date/Time	ABR Verdict	Sea State Verdict
Poseidon	2009-02-24 16:26:00	exempt due to tier status	excluded
Poseidon	2009-02-24 16:28:00	exempt due to tier status	excluded
Poseidon	2009-02-24 16:58:00	exempt due to tier status	excluded
Poseidon	2009-02-24 17:28:00	exempt due to tier status	excluded
Poseidon	2009-02-24 17:58:00	exempt due to tier status	excluded
Progress	2009-02-27 14:15:39	exempt due to tier status	excluded
Progress	2009-02-27 14:34:00	exempt due to tier status	excluded
Progress	2009-02-27 15:15:24	exempt due to tier status	excluded
Progress	2009-02-27 15:17:40	exempt due to tier status	excluded
Progress	2009-02-27 15:52:16	exempt due to tier status	excluded
Progress	2009-02-27 16:02:34	exempt due to tier status	excluded
Progress	2009-02-27 16:20:00	exempt due to tier status	excluded
Progress	2009-02-27 16:54:00	exempt due to tier status	excluded
Progress	2009-02-27 17:22:00	exempt due to tier status	excluded
Progress	2009-02-27 17:58:00	exempt due to tier status	excluded
Progress	2009-02-27 18:28:00	exempt due to tier status	excluded
Royal Atlantic	2009-07-05 10:26:00	excluded due to high sustained speed	excluded
Royal Atlantic	2009-07-05 10:56:00	excluded due to high sustained speed	excluded
Royal Atlantic	2009-07-05 11:26:00	excluded due to high sustained speed	excluded
Royal Atlantic	2009-07-06 06:24:00	excluded due to high sustained speed	excluded
Royal Atlantic	2009-07-06 06:54:00	excluded due to high sustained speed	excluded
Royal Atlantic	2009-07-06 07:24:00	excluded due to high sustained speed	excluded
Royal Atlantic	2009-07-06 07:54:00	excluded due to high sustained speed	excluded
Seeker	2009-08-28 12:08:00	excluded due to high sustained speed	excluded
Sovereignty	2009-02-19 19:36:00	excluded: logbook review, not fishing (retrieval time 19:05)	excluded by logbook review: not fishing
Sovereignty	2009-02-19 20:36:00	excluded due to high sustained speed	excluded by logbook review: not fishing
Sovereignty	2009-07-23 10:42:00	excluded due to high sustained speed	excluded: observed not fishing
Viking	2009-08-20 18:49:00	exempt due to tier status	excluded
Viking	2009-08-20 19:19:00	exempt due to tier status	excluded
Viking	2009-08-20 19:49:00	exempt due to tier status	excluded
Viking	2009-08-20 20:20:00	exempt due to tier status	excluded
Viking	2009-08-20 20:50:00	exempt due to tier status	excluded
Viking	2009-08-20 21:20:00	exempt due to tier status	excluded
Viking	2009-08-20 21:50:00	exempt due to tier status	excluded
Viking	2009-08-20 22:20:00	exempt due to tier status	excluded
Viking	2009-08-20 22:50:00	exempt due to tier status	excluded
Viking	2009-08-20 23:20:00	exempt due to tier status	excluded



Appendix 4. Continued.

Vessel	Observation Date/Time	ABR Verdict	Sea State Verdict
Viking	2009-08-20 23:50:00	exempt due to tier status	excluded
Viking	2009-08-21 00:20:00	exempt due to tier status	excluded
Viking	2009-08-21 00:50:00	exempt due to tier status	excluded
Viking	2009-08-21 01:20:00	exempt due to tier status	excluded
Viking	2009-08-21 01:50:00	exempt due to tier status	excluded
Viking	2009-08-21 02:20:00	exempt due to tier status	excluded
Viking	2009-08-21 02:50:00	exempt due to tier status	excluded
Viking	2009-08-21 03:20:00	exempt due to tier status	excluded
Viking	2009-08-21 03:51:00	exempt due to tier status	excluded
Viking	2009-08-21 04:21:00	exempt due to tier status	excluded
Viking	2009-08-21 04:51:00	exempt due to tier status	excluded
Viking	2009-08-21 05:21:00	exempt due to tier status	excluded
Viking	2009-08-21 05:51:00	exempt due to tier status	excluded
Viking	2009-08-21 06:21:00	exempt due to tier status	excluded
Viking	2009-08-21 06:51:00	exempt due to tier status	excluded
Viking	2009-08-21 07:21:00	exempt due to tier status	excluded
Viking	2009-08-21 07:51:00	exempt due to tier status	excluded
Viking	2009-08-21 08:21:00	exempt due to tier status	excluded
Viking	2009-08-21 08:51:00	exempt due to tier status	excluded
Viking	2009-08-21 08:59:00	exempt due to tier status	excluded
Viking	2009-08-21 09:22:00	exempt due to tier status	excluded
Viking	2009-08-21 09:52:00	exempt due to tier status	excluded
Viking	2009-08-21 10:22:00	exempt due to tier status	excluded
Viking	2009-08-21 10:52:00	exempt due to tier status	excluded
Viking	2009-08-21 11:22:00	exempt due to tier status	excluded
Viking	2009-08-21 11:52:00	exempt due to tier status	excluded
Viking	2009-08-21 12:22:00	exempt due to tier status	excluded
Viking	2009-08-21 12:52:00	exempt due to tier status	excluded
Viking	2009-08-21 13:22:00	exempt due to tier status	excluded
Viking	2009-08-21 13:52:00	exempt due to tier status	excluded
Viking	2009-08-21 14:22:00	exempt due to tier status	excluded
Viking	2009-08-21 14:53:00	exempt due to tier status	excluded
Viking	2009-08-21 15:23:00	exempt due to tier status	excluded
Viking	2009-08-21 15:53:00	exempt due to tier status	excluded
Viking	2009-08-21 16:23:00	exempt due to tier status	excluded
Viking	2009-08-21 16:53:00	exempt due to tier status	excluded
Viking	2009-08-21 17:23:00	exempt due to tier status	excluded
Viking	2009-08-21 17:53:00	exempt due to tier status	excluded
Viking	2009-08-21 18:23:00	exempt due to tier status	excluded
Viking	2009-08-21 18:53:00	exempt due to tier status	excluded
Viking	2009-08-21 19:23:00	exempt due to tier status	excluded
Viking	2009-08-21 19:53:00	exempt due to tier status	excluded
Viking	2009-08-21 20:23:00	exempt due to tier status	excluded
Viking	2009-08-21 20:53:00	exempt due to tier status	excluded
Viking	2009-08-21 21:23:00	exempt due to tier status	excluded
Viking	2009-08-21 21:54:00	exempt due to tier status	excluded
Viking	2009-08-21 22:24:00	exempt due to tier status	excluded
Viking	2009-08-21 22:54:00	exempt due to tier status	excluded
Viking	2009-08-21 23:24:00	exempt due to tier status	excluded
Viking	2009-08-21 23:54:00	exempt due to tier status	excluded

Appendix 4. Continued.

Vessel	Observation Date/Time	ABR Verdict	Sea State Verdict
Viking	2009-08-22 00:24:00	exempt due to tier status	excluded
Viking	2009-08-22 00:54:00	exempt due to tier status	excluded
Viking	2009-08-22 01:24:00	exempt due to tier status	excluded
Viking	2009-08-22 01:54:00	exempt due to tier status	excluded
Viking	2009-08-22 02:24:00	exempt due to tier status	excluded
Viking	2009-08-22 02:54:00	exempt due to tier status	excluded
Viking	2009-08-22 03:24:00	exempt due to tier status	excluded
Viking	2009-08-22 03:54:00	exempt due to tier status	excluded
Viking	2009-08-22 04:25:00	exempt due to tier status	excluded
Viking	2009-08-22 04:55:00	exempt due to tier status	excluded
Viking	2009-08-22 05:25:00	exempt due to tier status	excluded
Viking	2009-08-22 05:55:00	exempt due to tier status	excluded
Viking	2009-08-22 06:25:00	exempt due to tier status	excluded
Viking	2009-08-22 06:55:00	exempt due to tier status	excluded
Viking	2009-08-22 07:25:00	exempt due to tier status	excluded
Viking	2009-08-22 07:55:00	exempt due to tier status	excluded
Viking	2009-08-22 08:25:00	exempt due to tier status	excluded
Viking	2009-08-22 08:55:00	exempt due to tier status	excluded
Viking	2009-08-22 09:00:00	exempt due to tier status	excluded
Viking	2009-08-22 09:26:00	exempt due to tier status	excluded
Viking	2009-08-22 09:56:00	exempt due to tier status	excluded
Viking	2009-08-22 10:26:00	exempt due to tier status	excluded
Viking	2009-08-22 10:56:00	exempt due to tier status	excluded
Viking	2009-08-22 11:26:00	exempt due to tier status	excluded
Viking	2009-08-22 11:56:00	exempt due to tier status	excluded
Viking	2009-08-22 12:26:00	exempt due to tier status	excluded
Viking	2009-08-22 12:56:00	exempt due to tier status	excluded
Viking	2009-08-22 13:26:00	exempt due to tier status	excluded
Viking	2009-08-22 13:56:00	exempt due to tier status	excluded
Viking	2009-08-22 14:27:00	exempt due to tier status	excluded
Viking	2009-08-22 14:57:00	exempt due to tier status	excluded
Viking	2009-08-22 15:27:00	exempt due to tier status	excluded
Viking	2009-08-22 15:57:00	exempt due to tier status	excluded
Viking	2009-08-22 16:27:00	exempt due to tier status	excluded
Viking	2009-08-22 16:57:00	exempt due to tier status	excluded
Viking	2009-08-22 17:27:00	exempt due to tier status	excluded
Viking	2009-08-22 17:57:00	exempt due to tier status	excluded
Viking	2009-08-22 18:27:00	exempt due to tier status	excluded
Viking	2009-08-22 18:57:00	exempt due to tier status	excluded
Viking	2009-08-22 19:27:00	exempt due to tier status	excluded
Viking	2009-08-22 19:57:00	exempt due to tier status	excluded
Viking	2009-08-22 20:27:00	exempt due to tier status	excluded
Viking	2009-08-22 20:58:00	exempt due to tier status	excluded
Viking	2009-08-22 21:28:00	exempt due to tier status	excluded
Viking	2009-08-22 21:58:00	exempt due to tier status	excluded
Viking	2009-08-22 22:28:00	exempt due to tier status	excluded
Viking	2009-08-22 22:58:00	exempt due to tier status	excluded
Viking	2009-08-22 23:28:00	exempt due to tier status	excluded
Viking	2009-08-22 23:58:00	exempt due to tier status	excluded
Viking	2009-08-23 22:31:00	exempt due to tier status	excluded

Appendix 4. Continued.

Vessel	Observation Date/Time	ABR Verdict	Sea State Verdict
Viking	2009-08-23 23:01:00	exempt due to tier status	excluded
Viking	2009-08-23 23:31:00	exempt due to tier status	excluded
Viking	2009-08-24 00:02:00	exempt due to tier status	excluded
Viking	2009-08-24 00:32:00	exempt due to tier status	excluded
Viking	2009-08-24 01:02:00	exempt due to tier status	excluded
Viking	2009-08-24 01:32:00	exempt due to tier status	excluded
Viking	2009-08-24 02:02:00	exempt due to tier status	excluded
Viking	2009-08-24 02:32:00	exempt due to tier status	excluded
Viking	2009-08-24 03:02:00	exempt due to tier status	excluded
Viking	2009-08-24 03:32:00	exempt due to tier status	excluded
Viking	2009-08-24 04:02:00	exempt due to tier status	excluded
Viking	2009-08-24 04:32:00	exempt due to tier status	excluded
Viking	2009-08-24 05:02:00	exempt due to tier status	excluded
Viking	2009-08-24 05:33:00	exempt due to tier status	excluded
Viking	2009-08-24 06:03:00	exempt due to tier status	excluded
Viking	2009-08-24 06:33:00	exempt due to tier status	excluded
Viking	2009-08-24 07:03:00	exempt due to tier status	excluded
Viking	2009-08-24 07:33:00	exempt due to tier status	excluded
Viking	2009-08-24 08:03:00	exempt due to tier status	excluded
Viking	2009-08-24 08:33:00	exempt due to tier status	excluded
Viking	2009-08-24 09:00:00	exempt due to tier status	excluded
Viking	2009-08-24 09:03:00	exempt due to tier status	excluded
Viking	2009-08-24 09:33:00	exempt due to tier status	excluded
Viking	2009-08-24 10:03:00	exempt due to tier status	excluded
Viking	2009-08-24 10:34:00	exempt due to tier status	excluded
Viking	2009-08-24 11:04:00	exempt due to tier status	excluded
Viking Explorer	2009-03-04 01:38:00	excluded due to high sustained speed	excluded
Viking Explorer	2009-03-04 02:38:00	excluded due to high sustained speed	excluded
Viking Explorer	2009-03-07 21:28:00	excluded due to high sustained speed	excluded
Viking Explorer	2009-03-07 22:28:00	excluded due to high sustained speed	excluded by manual review: vessel running
Viking Explorer	2009-03-15 14:10:00	excluded due to high sustained speed	excluded
Viking Explorer	2009-03-15 15:10:00	excluded due to high sustained speed	excluded
Viking Explorer	2009-07-15 16:30:00	excluded due to high sustained speed	excluded
Viking Explorer	2009-07-15 17:30:00	excluded due to high sustained speed	excluded
Westward I	2009-02-27 00:22:00	exempt due to tier status	excluded
Westward I	2009-02-27 00:52:00	exempt due to tier status	excluded
Westward I	2009-03-01 09:01:00	excluded due to high sustained speed	excluded
Westward I	2009-03-01 09:31:00	excluded due to high sustained speed	excluded
Westward I	2009-03-01 10:01:00	excluded due to high sustained speed	excluded

Appendix 4. Continued.

Vessel	Observation Date/Time	ABR Verdict	Sea State Verdict
Westward I	2009-03-01 10:32:00	excluded due to high sustained speed	excluded
Westward I	2009-03-01 11:02:00	excluded due to high sustained speed	excluded
Westward I	2009-03-01 11:32:00	excluded due to high sustained speed	excluded
Westward I	2009-03-01 12:02:00	excluded due to high sustained speed	excluded
Westward I	2009-03-01 12:32:00	excluded due to high sustained speed	excluded
Westward I	2009-03-01 13:02:00	excluded due to high sustained speed	excluded
Westward I	2009-08-20 09:37:00	exempt due to tier status	excluded
Westward I	2009-08-20 10:07:00	exempt due to tier status	excluded
Westward I	2009-08-20 10:37:00	exempt due to tier status	excluded
Westward I	2009-08-20 11:07:00	exempt due to tier status	excluded
Westward I	2009-08-20 11:37:00	exempt due to tier status	excluded
Westward I	2009-08-20 12:07:00	exempt due to tier status	excluded
Westward I	2009-08-20 12:38:00	exempt due to tier status	excluded
Westward I	2009-08-20 13:08:00	exempt due to tier status	excluded
Westward I	2009-08-20 13:38:00	exempt due to tier status	excluded
Westward I	2009-08-20 14:08:00	exempt due to tier status	excluded
Westward I	2009-08-20 14:38:00	exempt due to tier status	excluded
Westward I	2009-08-20 15:08:00	exempt due to tier status	excluded
Westward I	2009-08-20 15:38:00	exempt due to tier status	excluded
Westward I	2009-08-20 16:08:00	exempt due to tier status	excluded
Westward I	2009-08-20 16:38:00	exempt due to tier status	excluded
Westward I	2009-08-20 17:08:00	exempt due to tier status	excluded
Westward I	2009-08-20 17:39:00	exempt due to tier status	excluded
Westward I	2009-08-20 18:09:00	exempt due to tier status	excluded
Westward I	2009-08-20 18:39:00	exempt due to tier status	excluded
Westward I	2009-08-20 19:09:00	exempt due to tier status	excluded
Westward I	2009-08-20 19:39:00	exempt due to tier status	excluded
Westward I	2009-08-20 20:09:00	exempt due to tier status	excluded
Westward I	2009-08-20 20:39:00	exempt due to tier status	excluded
Westward I	2009-08-20 21:09:00	exempt due to tier status	excluded
Westward I	2009-08-20 21:39:00	exempt due to tier status	excluded
Westward I	2009-08-20 22:09:00	exempt due to tier status	excluded
Westward I	2009-08-20 22:39:00	exempt due to tier status	excluded
Westward I	2009-08-20 23:10:00	exempt due to tier status	excluded
Westward I	2009-08-20 23:40:00	exempt due to tier status	excluded
Westward I	2009-08-21 00:10:00	exempt due to tier status	excluded
Westward I	2009-08-21 00:40:00	exempt due to tier status	excluded
Westward I	2009-08-21 01:10:00	exempt due to tier status	excluded
Westward I	2009-08-21 01:40:00	exempt due to tier status	excluded
Westward I	2009-08-21 02:10:00	exempt due to tier status	excluded
Westward I	2009-08-21 02:40:00	exempt due to tier status	excluded
Westward I	2009-08-21 03:10:00	exempt due to tier status	excluded
Westward I	2009-08-21 03:40:00	exempt due to tier status	excluded
Westward I	2009-08-21 04:11:00	exempt due to tier status	excluded

Appendix 4. Continued.

Vessel	Observation Date/Time	ABR Verdict	Sea State Verdict
Westward I	2009-08-21 04:41:00	exempt due to tier status	excluded
Westward I	2009-08-21 05:11:00	exempt due to tier status	excluded
Westward I	2009-08-21 05:41:00	exempt due to tier status	excluded
Westward I	2009-08-21 06:11:00	exempt due to tier status	excluded
Westward I	2009-08-21 06:41:00	exempt due to tier status	excluded
Westward I	2009-08-21 07:11:00	exempt due to tier status	excluded
Westward I	2009-08-21 07:41:00	exempt due to tier status	excluded
Westward I	2009-08-21 08:11:00	exempt due to tier status	excluded
Westward I	2009-08-21 08:41:00	exempt due to tier status	excluded
Westward I	2009-08-21 08:59:00	exempt due to tier status	excluded
Westward I	2009-08-21 09:11:00	exempt due to tier status	excluded
Westward I	2009-08-21 09:42:00	exempt due to tier status	excluded
Westward I	2009-08-21 10:12:00	exempt due to tier status	excluded
Westward I	2009-08-21 10:42:00	exempt due to tier status	excluded
Westward I	2009-08-21 11:12:00	exempt due to tier status	excluded
Westward I	2009-08-21 11:42:00	exempt due to tier status	excluded
Westward I	2009-08-21 12:12:00	exempt due to tier status	excluded
Westward I	2009-08-21 12:42:00	exempt due to tier status	excluded
Westward I	2009-08-21 13:12:00	exempt due to tier status	excluded
Westward I	2009-08-21 13:42:00	exempt due to tier status	excluded
Westward I	2009-08-21 14:12:00	exempt due to tier status	excluded
Westward I	2009-08-21 14:42:00	exempt due to tier status	excluded
Westward I	2009-08-21 15:13:00	exempt due to tier status	excluded
Westward I	2009-08-21 15:43:00	exempt due to tier status	excluded
Westward I	2009-08-21 16:13:00	exempt due to tier status	excluded
Westward I	2009-08-21 16:43:00	exempt due to tier status	excluded
Westward I	2009-08-21 17:13:00	exempt due to tier status	excluded
Westward I	2009-08-21 17:43:00	exempt due to tier status	excluded
Westward I	2009-08-21 18:13:00	exempt due to tier status	excluded
Westward I	2009-08-21 18:43:00	exempt due to tier status	excluded
Westward I	2009-08-21 19:13:00	exempt due to tier status	excluded
Westward I	2009-08-21 19:43:00	exempt due to tier status	excluded
Westward I	2009-08-21 20:13:00	exempt due to tier status	excluded
Westward I	2009-08-21 20:44:00	exempt due to tier status	excluded
Westward I	2009-08-21 21:14:00	exempt due to tier status	excluded
Westward I	2009-08-21 21:44:00	exempt due to tier status	excluded
Westward I	2009-08-21 22:14:00	exempt due to tier status	excluded
Westward I	2009-08-21 22:44:00	exempt due to tier status	excluded
Westward I	2009-08-21 23:14:00	exempt due to tier status	excluded
Westward I	2009-08-21 23:44:00	exempt due to tier status	excluded