



# Legal Services Corporation

## Fact Book 2009

*June 2010*

*A publication of*

Legal Services Corporation  
3333 K Street, NW  
Washington, DC 20007  
[www.lsc.gov](http://www.lsc.gov)

*For further information, contact*

John Meyer, Director  
Office of Information Management  
202-295-1505  
[meyerj@lsc.gov](mailto:meyerj@lsc.gov)



## PREFACE

I am pleased to present the 2009 Legal Services Corporation Fact Book. This Fact Book contains selected national data on 2009 LSC program funding, legal services to clients including Private Attorney Involvement (PAI), client demographics, and program staffing. Also included is selected historical data from prior years.

The 2009 LSC Fact Book contains actual data with no extrapolations or estimates. Most of the data is derived from the Grant Activity Reports, a data collection process required of all LSC-funded programs in which data is submitted to LSC in March of each year. The remainder of the data is collected from budget and funding records of LSC-funded programs.

The 2009 LSC Fact Book concisely compiles these vital statistics on LSC-funded programs for easy use and reference. This information offers a national perspective on the resources available to and the services provided by LSC-funded programs. It is a useful reference for the LSC community and can also be used in presenting and explaining to those outside the LSC community what LSC-funded civil legal aid programs do for low-income persons in need of civil legal assistance.

I would like to thank Mulumebet Wolde and the staff of the LSC Office of Information Management, under the direction of John Meyer, for their careful and painstaking work in preparing this 2009 LSC Fact Book.

We are very interested in answering any questions you may have or receiving comments about this document, including suggestions for other data compilations that would be useful to all programs. Please feel free to contact John Meyer, Director of LSC's Office of Information Management, at [meyerj@lsc.gov](mailto:meyerj@lsc.gov) or at 202-295-1505.

A handwritten signature in blue ink, appearing to read "Victor M. Fortuno", written over a horizontal line.

Victor M. Fortuno, President  
Legal Services Corporation  
June 2010

# Table of Contents

<b>2009 AT A GLANCE</b>	<b>1</b>
<b>FUNDING</b>	<b>2</b>
1976 – 2009 Annual LSC Appropriations	3
2009 Poverty Population and LSC Funding Summary by State	4
2009 LSC and Non-LSC Funding Received by LSC-Funded Programs by State	5
2009 LSC and Non-LSC Funding Summary (Pie Chart)	7
2009 LSC and Non-LSC Funding Summary	8
<b>CLIENT SERVICES</b>	<b>9</b>
2000 – 2009 Total LSC-Eligible Cases Closed by LSC-Funded Programs	10
2009 LSC-Eligible Case Services Summary by Reason for Closure (Pie Chart)	11
2009 LSC-Eligible Cases Closed by Case Type and Reason for Closure	12
2009 LSC-Eligible Case Services Summary by Case Type (Pie Chart)	15
2009 LSC-Eligible Cases Closed by Case Type	16
<b>CLIENT DEMOGRAPHICS</b>	<b>17</b>
2009 Ethnicity of LSC Clients (Pie Chart)	18
2009 Age and Gender of LSC Clients (Pie Chart)	19
2009 Age, Ethnicity and Gender of LSC Clients	20
<b>PRIVATE ATTORNEY INVOLVEMENT</b>	<b>21</b>
2009 Private Attorney Involvement (PAI) for LSC Programs	22
2008 – 2009 PAI with Percentage Change for LSC Programs	23
<b>STAFFING</b>	<b>24</b>
2009 Staffing Levels with Average Salary and Experience for LSC Programs	25
2009 Staff Ethnicity and Gender for LSC Programs (Pie Chart)	26
2009 Summary of Staff Positions by Job Classification, Ethnicity and Gender for LSC Programs	27
2009 Summary of LSC Program Staffing Levels by Job Classification, Years of Experience in Profession and Average Salary	28
2008 – 2009 Staffing Levels for LSC Programs	30
<b>LSC ORGANIZATIONAL CHART</b>	<b>31</b>

# LEGAL SERVICES CORPORATION

## 2009 AT A GLANCE

<b>Amount of LSC Funding and Related Support</b>	<b>\$365,800,000</b>
<b>Number of Programs Receiving Grants</b>	<b>136</b>
<b>Number of Offices</b>	<b>918</b>
<b>Number of Service Areas <sup>[1]</sup></b>	<b>206</b>

### Local LSC-Funded Programs

<b>Amount of Non-LSC Funding and Related Support</b>	<b>\$526,533,297</b>
<b>Number of Full-time Staff as of December 31, 2009</b>	
Attorneys	4,174 <sup>[2]</sup>
Paralegals	1,577
Other Staff	3,134
<b>Total</b>	<b>8,885</b>
<b>Number of Cases Closed</b>	
Basic Field - General (Program Staff Only)	800,711
Private Attorney Involvement	103,753
Basic Field - Native American	11,275
Basic Field - Migrant Farmworkers	4,708
<b>Total</b>	<b>920,447</b>
<b>Number of Cases Open on December 31, 2009</b>	<b>257,840</b>
<b>Total Number of Individual Clients Served During the Year</b>	<b>919,910 <sup>[3]</sup></b>

<sup>1</sup> There are three types of service areas: Basic Field – General, which are geographical areas that are States and other political jurisdictions or portions thereof, collectively covering all of the United States and serving all client-eligible persons therein; Basic Field – Migrant, which are entire States or political jurisdictions, but are limited to serving eligible Migrant Farmworkers therein; and Basic Field – Native American, which are descriptive and only approximately geographical and serve only Native Americans therein. Grantee programs may, and often do, serve more than one service area.

<sup>2</sup> The computation of the number of attorneys includes all Job Codes 5 to 11 (Litigation Director to Staff Attorney) and all Directors and Deputy Directors who are attorneys. It does not include the small number of attorneys serving in non-attorney positions – e.g. Management Professionals who are attorneys.

<sup>3</sup> This number is less than the number of cases closed because some clients have more than one case.

# Funding

## 1976 – 2009 Annual LSC Appropriations

Grant Year	Annual LSC Appropriations <sup>[4]</sup> (\$)	Percentage Change from Prior Year	Annual LSC Appropriations in 2009 Dollars
1976	116,960,000 <sup>[5]</sup>		440,988,530
1977	125,000,000	6.9%	442,526,820
1978	205,000,000	64.0%	674,541,180
1979	270,000,000	31.7%	797,864,880
1980	300,000,000	11.1%	781,081,310
1981	321,300,000	7.1%	758,313,950
1982	241,000,000	-25.0%	535,786,700
1983	241,000,000	0.0%	519,110,610
1984	275,000,000	14.1%	567,831,330
1985	305,000,000	10.9%	608,120,680
1986	292,363,000	-4.1%	572,287,230
1987	305,500,000	4.5%	576,945,890
1988	305,500,000	0.0%	554,024,120
1989	308,555,000	1.0%	533,842,450
1990	316,525,000	2.6%	519,558,710
1991	328,182,000	3.7%	516,939,660
1992	350,000,000	6.6%	535,195,650
1993	357,000,000	2.0%	530,032,590
1994	400,000,000	12.0%	579,047,230
1995	400,000,000	0.0%	563,089,240
1996	278,000,000	-30.5%	380,122,920
1997	283,000,000	1.8%	378,280,190
1998	283,000,000	0.0%	372,478,350
1999	300,000,000	6.0%	386,321,130
2000	303,841,000	1.3%	378,543,190
2001	329,274,000	8.4%	398,878,920
2002	329,300,000	0.0%	392,701,690
2003	336,645,488	2.2%	392,515,260
2004	335,282,450	-0.4%	380,785,570
2005	330,803,705	-1.3%	363,388,110
2006	326,577,984	-1.3%	347,535,040
2007	348,578,000	6.7%	360,674,050
2008	350,490,000	0.5%	349,243,030
2009	390,000,000	11.3%	390,000,000

<sup>4</sup> Not including special supplemental emergency funds, and Veterans Court funds.

<sup>5</sup> The 1976 figure includes \$24,630,000 supplemental appropriations due to the Fiscal Year change from July 1 to October 1 and therefore includes five quarters' funding.

## 2009 Poverty Population and LSC Funding Summary by State

State*	Total Poverty Population	Basic Field General Poverty Population	Basic Field Migrant Poverty Population	Basic Field General Amount (\$)	Basic Field Migrant Amount (\$)	Basic Field Nat. American Amount (\$) <sup>6</sup>	Basic Field Total (\$)
Alabama	698,097	694,540	3,557	6,850,344	35,083	0	6,885,427
Alaska	80,405	80,405	0	793,046	0	577,924	1,370,970
Arizona	698,669	682,618	16,051	6,732,756	158,313	3,469,661	10,360,730
Arkansas	411,777	403,232	8,545	3,977,133	84,280	0	4,061,413
California	4,706,130	4,420,741	285,389	43,602,380	2,814,831	944,111	47,361,322
Colorado	388,952	372,896	16,056	3,677,925	158,362	102,625	3,938,912
Connecticut	259,514	257,713	1,801	2,541,859	0	16,729	2,558,588
Delaware	69,901	67,217	2,684	662,971	26,473	0	689,444
District of Columbia	109,500	109,500	0	1,080,014	0	0	1,080,014
Florida	1,952,629	1,855,536	97,093	18,301,409	957,642	0	19,259,051
Georgia	1,033,793	991,407	42,386	9,778,384	418,059	0	10,196,443
Guam	34,792	34,792	0	343,158	0	0	343,158
Hawaii	150,439	142,989	7,450	1,483,801	0	244,785	1,728,586
Idaho	148,732	128,525	20,207	1,267,660	199,304	69,426	1,536,390
Illinois	1,291,958	1,264,971	26,987	12,476,584	266,177	0	12,742,761
Indiana	559,484	547,192	12,292	5,397,030	121,238	0	5,518,268
Iowa	258,008	253,929	4,079	2,504,537	40,232	0	2,544,769
Kansas	257,829	256,544	1,285	2,530,329	12,674	0	2,543,003
Kentucky	621,096	616,495	4,601	6,080,575	45,380	0	6,125,955
Louisiana	851,113	848,136	2,977	8,365,283	29,363	0	8,394,646
Maine	135,501	127,741	7,760	1,259,927	133,172	68,877	1,461,976
Maryland	438,676	428,847	9,829	4,229,777	96,945	0	4,326,722
Massachusetts	573,421	571,622	1,799	5,637,987	0	0	5,637,987
Michigan	1,021,605	956,530	65,075	9,434,388	641,844	175,912	10,252,144
Micronesia	178,317	178,317	0	1,758,765	0	0	1,758,765
Minnesota	380,476	358,846	21,630	3,539,348	213,340	255,379	4,008,067
Mississippi	548,079	541,909	6,170	5,344,923	60,856	88,831	5,494,610
Missouri	637,891	629,084	8,807	6,204,742	86,865	0	6,291,607
Montana	128,355	122,454	5,901	1,207,781	58,202	170,153	1,436,136
Nebraska	161,269	156,698	4,571	1,545,534	45,084	35,323	1,625,941
Nevada	205,685	205,413	272	2,026,017	2,683	142,099	2,170,799
New Hampshire	78,530	77,455	1,075	763,949	0	0	763,949
New Jersey	699,668	686,623	13,045	6,772,259	128,665	0	6,900,924
New Mexico	328,933	319,491	9,442	3,151,184	93,128	520,798	3,765,110
New York	2,692,202	2,662,277	29,925	26,258,406	295,154	0	26,553,560
North Carolina	958,667	900,725	57,942	8,883,975	571,490	233,222	9,688,687
North Dakota	73,457	60,926	12,531	600,922	123,595	287,855	1,012,372
Ohio	1,170,698	1,157,080	13,618	11,412,441	134,316	0	11,546,757
Oklahoma	491,235	484,470	6,765	4,778,395	66,724	874,972	5,720,091
Oregon	388,740	328,520	60,220	3,240,238	593,958	197,267	4,031,463
Pennsylvania	1,304,117	1,286,199	17,918	12,685,958	176,728	0	12,862,686
Puerto Rico	1,818,687	1,787,255	31,432	17,627,944	310,018	0	17,937,962
Rhode Island	120,548	120,357	191	1,187,098	0	0	1,187,098
South Carolina	547,869	526,485	21,384	5,192,794	210,913	0	5,403,707
South Dakota	95,900	95,471	429	941,643	4,231	997,769	1,943,643
Tennessee	746,789	739,932	6,857	7,298,051	67,632	0	7,365,683
Texas	3,117,609	2,967,441	150,168	29,268,281	1,481,128	33,445	30,782,854
Utah	206,328	198,995	7,333	1,962,715	72,326	87,916	2,122,957
Vermont	55,506	54,630	876	538,823	0	0	538,823
Virgin Islands	34,931	34,931	0	344,529	0	0	344,529
Virginia	656,641	639,590	17,051	6,308,366	168,176	0	6,476,542
Washington	612,370	533,459	78,911	5,261,580	778,310	304,414	6,344,304
West Virginia	315,794	311,842	3,952	3,075,741	38,979	0	3,114,720
Wisconsin	451,538	441,695	9,843	4,356,498	97,083	165,766	4,619,347
Wyoming	54,777	53,432	1,345	437,202	5,528	76,942	519,672
	<b>36,013,627</b>	<b>34,776,120</b>	<b>1,237,507</b>	<b>342,985,359</b>	<b>12,124,484</b>	<b>10,142,201</b>	<b>365,252,044</b>

\* State includes territories and other jurisdictions.

<sup>6</sup> Funding for Basic Field – Native American service areas is not calculated by Native American poverty population. In many instances, accurate Native American poverty population figures are not available. Native American service areas are not always by county or other political subdivision. These service areas are sometimes described by language such as: Native Americans living in or near the \_\_\_ Reservation and members of the \_\_\_\_\_ Tribe living off reservation who have cases which require litigation in the Tribal Court.

**Source: LSC Funding Tables – 2009; Poverty Population 2000 U.S. Census**



**2009 LSC and Non-LSC Funding Received by LSC-Funded Programs by State<sup>17</sup>**

	LSC Basic Field Grants	LSC Derivative Income	Other LSC Funds	LSC Total	Other Federal Grants	State and Local Grants	IOLTA	Private Grants	Non-LSC Derivative Income	Other Non-LSC Funds	Non-LSC Total	LSC & Non-LSC Total	Non-LSC %
Alabama	6,885,427	1,303,139	76,296	8,264,862	1,156,808	27,227	327,935	56,150	0	146,666	1,714,786	9,979,648	17.2
Alaska	1,370,970	70,437	0	1,441,407	506,243	831,740	65,138	10,723	3,891	256,669	1,674,404	3,115,811	53.7
Arizona	10,360,730	457,089	33,843	10,851,662	1,001,021	990,777	799,001	620,147	903,910	481,709	4,796,565	15,648,227	30.7
Arkansas	4,061,413	78,631	174,240	4,314,284	123,342	923,962	416,817	50,079	276,807	424,777	2,215,784	6,530,068	33.9
California	47,361,322	2,506,414	465,633	50,333,369	6,532,462	14,806,525	6,225,716	8,219,229	3,272,555	10,586,475	49,642,962	99,976,331	49.7
Colorado	3,938,912	110	104,550	4,043,572	1,344,641	1,138,909	2,418,532	1,597,513	4,950,429	76,365	11,526,389	15,569,961	74.0
Connecticut	2,558,588	86,466	17,450	2,662,504	0	55,681	129,998	0	0	53,157	238,836	2,901,340	8.2
Delaware	689,444	2,150	0	691,594	49,408	0	150,000	0	24,000	203,722	427,130	1,118,724	38.2
District of Columbia	1,080,014	28,485	0	1,108,499	0	0	38,750	0	457,960	780,515	1,277,225	2,385,724	53.5
Florida	19,259,051	868,631	551,393	20,679,075	3,722,340	5,516,480	5,450,705	1,462,561	2,940,592	1,857,587	20,950,265	41,629,340	50.3
Georgia	10,196,443	12,948	68,913	10,278,304	2,655,847	2,703,069	3,054,501	2,742,985	360,622	1,766,631	13,283,655	23,561,959	56.4
Guam	343,158	96,890	112	440,160	566,142	0	0	0	36,819	65,632	668,593	1,108,753	60.3
Hawaii	1,728,586	210	0	1,728,796	2,836,206	2,656,674	150,000	250,738	560,000	808,584	7,262,202	8,990,998	80.8
Idaho	1,536,390	0	0	1,536,390	557,151	59,363	183,500	67,479	0	33,834	901,327	2,437,717	37.0
Illinois	12,742,761	413,107	20,850	13,176,718	3,689,805	3,262,443	4,625,045	2,388,886	38,132	2,883,951	16,888,262	30,064,980	56.2
Indiana	5,518,268	319,521	26,292	5,864,081	633,369	1,251,452	0	336,308	620,791	378,703	3,220,623	9,084,704	35.5
Iowa	2,544,769	43,218	36,500	2,624,487	754,135	2,285,372	706,824	1,496,328	395,582	235,285	5,873,526	8,498,013	69.1
Kansas	2,543,003	1,901	37,674	2,582,578	956,733	2,924,907	145,250	598,964	0	472,856	5,098,710	7,681,288	66.4
Kentucky	6,125,955	446,085	109,701	6,681,741	1,573,291	4,294,973	941,276	1,266,865	2,881,096	735,169	11,692,670	18,374,411	63.6
Louisiana	8,394,646	404,374	205,889	9,004,909	477,200	809,355	1,566,527	749,694	1,038,066	287,038	4,927,880	13,932,789	35.4
Maine	1,461,976	1,459	43,914	1,507,349	604,468	1,290,708	499,821	192,868	1,721,838	644,437	4,954,140	6,461,489	76.7
Maryland	4,326,722	5,931	12,500	4,345,153	370,175	8,263,782	7,553,586	566,250	0	2,748,914	19,502,707	23,847,860	81.8
Massachusetts	5,637,987	307,535	42,225	5,987,747	102,166	4,167	292,135	212,201	474,053	485,108	1,569,830	7,557,577	20.8
Michigan	10,252,144	230,194	8,350	10,490,688	1,808,239	2,503,691	1,049,720	6,470,270	1,485,031	1,364,689	14,681,640	25,172,328	58.3
Micronesia	1,758,765	0	0	1,758,765	0	400,641	0	7,310	0	34,266	442,217	2,200,982	20.1
Minnesota	4,008,067	33,924	6,488	4,048,479	1,033,676	7,691,878	1,109,170	1,040,924	281,627	2,578,893	13,736,168	17,784,647	77.2
Mississippi	5,494,610	207,186	0	5,701,796	343,758	458,128	793,377	37,500	797,877	1,234,903	3,665,543	9,367,339	39.1
Missouri	6,291,607	49,016	27,041	6,367,664	1,836,458	5,848,353	1,692,847	2,351,852	519,860	1,638,528	13,887,898	20,255,562	68.6
Montana	1,436,136	1,912	168,105	1,606,153	1,106,642	0	250,000	65,163	42,555	289,919	1,754,279	3,360,432	52.2
Nebraska	1,625,941	0	0	1,625,941	0	567,738	200,000	0	0	0	767,738	2,393,679	32.1
Nevada	2,170,799	273,083	0	2,443,882	36,924	522,523	70,000	12,047	0	40,110	681,604	3,125,486	21.8
New Hampshire	763,949	498	6,250	770,697	43,223	0	39,500	0	0	43,691	126,414	897,111	14.1
New Jersey	6,900,924	809,005	240	7,710,169	2,331,168	29,104,674	2,867,821	388,970	2,656,817	3,631,036	40,980,486	48,690,655	84.2
New Mexico	3,765,110	7,540	7,316	3,779,966	22,877	2,430,655	0	287,505	-225	147,104	2,887,916	6,667,882	43.3
New York	26,553,560	1,712,817	122,926	28,389,303	5,450,684	31,947,202	10,485,555	5,159,851	15,228,464	1,832,294	70,104,050	98,493,353	71.2
North Carolina	9,688,687	976,532	281,660	10,946,879	864,290	5,625,781	2,230,000	1,282,694	1,220,577	935,060	12,158,402	23,105,281	52.6

**2009 LSC and Non-LSC Funding Received by LSC-Funded Programs by State<sup>7</sup>**

	LSC Basic Field Grants	LSC Derivative Income	Other LSC Funds	LSC Total	Other Federal Grants	State and Local Grants	IOLTA	Private Grants	Non-LSC Derivative Income	Other Non-LSC Funds	Non-LSC Total	LSC & Non-LSC Total	Non-LSC %
North Dakota	1,012,372	81,040	2,323	1,095,735	368,600	109,503	85,000	76,940	299,884	56,793	996,720	2,092,455	47.6
Ohio	11,546,757	452,382	446,500	12,445,639	3,897,419	5,502,308	14,117,465	2,617,515	10,048,995	1,712,020	37,895,722	50,341,361	75.3
Oklahoma	5,720,091	261,183	531	5,981,805	702,087	1,886,271	470,000	710,784	1,677,576	557,508	6,004,226	11,986,031	50.1
Oregon	4,031,463	316,309	0	4,347,772	692,298	2,691,477	597,609	363,116	0	370,590	4,715,090	9,062,862	52.0
Pennsylvania	12,862,686	382,522	54,254	13,299,462	5,027,788	9,662,433	1,860,632	1,441,958	2,481,983	1,813,907	22,288,701	35,588,163	62.6
Puerto Rico	17,937,962	362,245	23,636	18,323,843	241,574	3,932,790	0	3,209	0	1,205	4,178,778	22,502,621	18.6
Rhode Island	1,187,098	0	0	1,187,098	460,836	1,001,375	731,760	25,000	0	277,844	2,496,815	3,683,913	67.8
South Carolina	5,403,707	480,695	0	5,884,402	416,252	1,699,039	1,726,132	135,452	0	206,157	4,183,032	10,067,434	41.6
South Dakota	1,943,643	178,360	7,825	2,129,828	523,781	5,255	20,000	120,404	3,973	202,717	876,130	3,005,958	29.1
Tennessee	7,365,683	278,684	457,366	8,101,733	4,812,761	4,578,692	676,700	623,293	897,280	2,101,175	13,689,901	21,791,634	62.8
Texas	30,782,854	639,786	244,210	31,666,850	997,593	5,274,046	6,688,189	1,792,059	580,003	7,890,849	23,222,739	54,889,589	42.3
Utah	2,122,957	30,112	64,330	2,217,399	519,418	436,397	60,000	392,244	581,114	10,589	1,999,762	4,217,161	47.4
Vermont	538,823	46,755	39,500	625,078	0	0	50,000	5,000	0	7,548	62,548	687,626	9.1
Virgin Islands	344,529	0	0	344,529	245,073	787,500	35,000	64,672	0	20,814	1,153,059	1,497,588	77.0
Virginia	6,476,542	92,218	78,500	6,647,260	393,258	7,004,711	794,645	672,562	2,361,534	325,386	11,552,096	18,199,356	63.5
Washington	6,344,304	247,451	314,074	6,905,829	457,305	11,916,099	101,325	240,735	1,996,574	138,993	14,851,031	21,756,860	68.3
West Virginia	3,114,720	8	5,000	3,119,728	311,769	3,796,179	262,620	232,432	0	230,676	4,833,676	7,953,404	60.8
Wisconsin	4,619,347	588,681	530	5,208,558	1,367,415	1,425,359	120,349	194,683	1,194,455	1,014,930	5,317,191	10,525,749	50.5
Wyoming	519,672	0	0	519,672	33,254	0	0	0	0	0	33,254	552,926	6.0
	<b>365,252,044</b>	<b>16,194,869</b>	<b>4,394,930</b>	<b>385,841,843</b>	<b>66,559,373</b>	<b>202,908,264</b>	<b>84,926,473</b>	<b>49,702,112</b>	<b>65,313,097</b>	<b>57,123,978</b>	<b>526,533,297</b>	<b>912,375,140</b>	<b>57.7</b>

<sup>7</sup> LSC Derivative Income includes LSC interest/investment income, publication income, and carryover funds.

Other LSC Funds includes LSC funding other than Basic Field, such as Technology Initiative Grants (TIG) and Emergency Grants

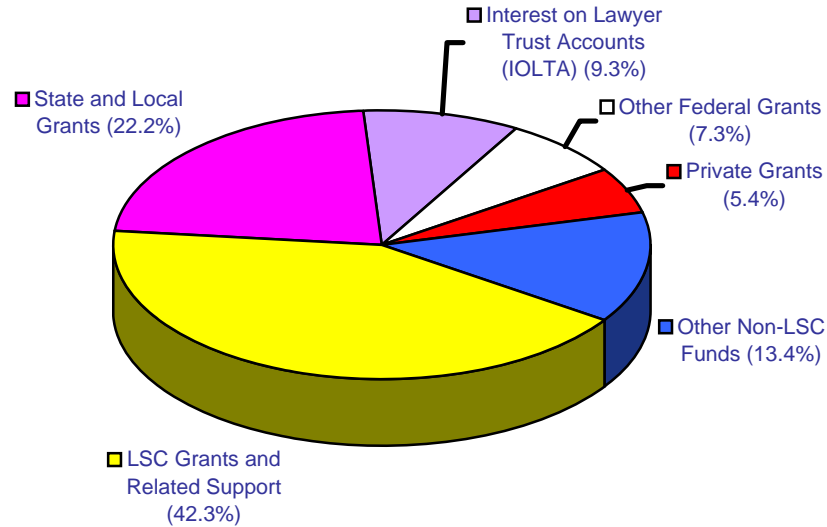
Other Federal Grants includes Title XX, Older Americans Act, Violence Against Women Act, other federal and community development block grants

IOLTA also includes filing fees distributed to LSC programs through State IOLTA funders

Private Grants includes United Way, private foundation and bar association grants.

Non-LSC Derivative Income includes publication income and carryover funds.

## 2009 LSC and Non-LSC Funding Summary



Funding Type <sup>18)</sup>	Amount (\$)	Percent*
LSC Grants and Related Support	385,841,843	42.3%
State and Local Grants	202,908,264	22.2%
Interest on Lawyer Trust Accounts (IOLTA)	84,926,473	9.3%
Other Federal Grants	66,559,373	7.3%
Private Grants	49,702,112	5.4%
Other Non-LSC Funds	122,437,075	13.4%
<b>Total</b>	<b>912,375,140</b>	<b>100.0%</b>

\* Percentages do not total exactly because of rounding.

<sup>8</sup> **LSC Grants and Related Support** includes LSC Basic Field grants, interest/investment income, publication income, carryover funds, and other LSC funds.

**IOLTA** also includes filing fees distributed to LSC programs through State IOLTA funders

**Other Federal Grants** includes Title XX, Older Americans Act, Violence Against Women Act, other federal and community development block grants.

**Private Grants** includes United Way, private foundation and bar association grants.

**Other Non-LSC Funds** includes carryover, other derivative income, and other non-LSC funds.

## 2009 LSC and Non-LSC Funding Summary

Amount \$	Percent of Programs' Total Funding*
--------------	--

### LSC FUNDING SOURCES:

<b>Basic Field Grants</b>	365,252,044	40.0%
<b>LSC Derivative Income</b>		
Interest/Investment Income	562,789	0.1%
Attorney Fee Awards - LSC Case(s) <sup>9]</sup>	9,668	0.0%
Publication Income	900	0.0%
Carryover Funds	15,621,512	1.7%
<b>Other LSC Funds</b>	4,394,930	0.5%
<b>Subtotal LSC Sources:</b>	<b>385,841,843</b>	<b>42.3%</b>

### NON - LSC FUNDING SOURCES:

<b>Other Federal Grants</b>		
Title XX of Social Security Act	4,572,831	0.5%
Older Americans Act	19,802,339	2.2%
Violence Against Women Act	11,452,410	1.3%
Other Federal Grants	27,513,056	3.0%
Community Development Block Grants	3,218,737	0.4%
<b>State and Local Grants</b>		
State Grants	154,716,123	17.0%
Local Grants	48,192,141	5.3%
<b>Private Grants</b>		
United Way	13,113,044	1.4%
Foundation Grants	29,608,746	3.2%
Bar Association Grants	6,980,322	0.8%
<b>IOLTA</b>	84,926,473	9.3%
<b>Non-LSC Derivative Income</b>		0.0%
Attorney Fee Awards <sup>9]</sup>	188,579	0.0%
Publication Income	947,614	0.1%
Carryover Funds	64,176,904	7.0%
<b>Other Non-LSC Funds</b>	57,123,978	6.3%
<b>Subtotal NON-LSC Sources:</b>	<b>526,533,297</b>	<b>57.7%</b>

<b>TOTAL FUNDING:</b>	<b>912,375,140</b>	<b>100.0%</b>
-----------------------	--------------------	---------------

\* Percentages do not total exactly because of rounding.

<sup>9</sup> Refers to cases on which work was performed prior to 4/24/96.

**Source: Grant Activity Reports – 2009**

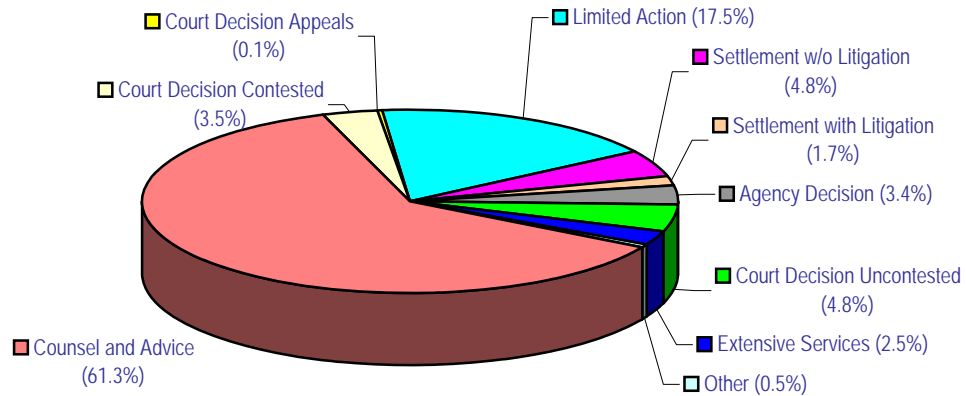
# Client Services

## 2000 – 2009 Total LSC-Eligible Cases Closed by LSC-Funded Programs

Basic Field - General							
Program Staff	Private Attorneys	Totals	Basic Field Nat. American	Basic Field Migrant	Totals	Change From Prior Year	
2000	873,199	121,030	994,229	11,481	6,658	1,012,368	
2001	877,492	118,749	996,241	10,334	7,538	1,014,113	0.2%
2002	847,642	114,632	962,274	10,053	6,507	978,834	-3.5%
2003	806,735	112,300	919,035	9,986	6,772	935,793	-4.4%
2004	782,793	102,256	885,049	10,527	5,491	901,067	-3.7%
2005	792,644	97,493	890,137	10,967	5,234	906,338	0.6%
2006	786,923	93,922	880,845	9,796	4,847	895,488	-1.2%
2007	793,997	97,531	891,528	9,716	5,263	906,507	1.2%
2008	781,501	93,174	874,675	9,552	4,928	889,155	-1.9%
2009	800,711	103,753	904,464	11,275	4,708	920,447	3.5%

Source: Grant Activity Reports - 2009

## 2009 LSC-Eligible Case Services Summary by Reason for Closure



Reason for Closure <sup>[10]</sup>	Total	
	Closed Cases	Percent
Counsel and Advice	564,546	61.3%
Limited Action	161,275	17.5%
Settlement w/o Litigation	15,409	1.7%
Settlement with Litigation	43,882	4.8%
Agency Decision	31,030	3.4%
Court Decision Uncontested	44,092	4.8%
Court Decision Contested	31,984	3.5%
Court Decision Appeals	499	0.1%
Extensive Services	23,347	2.5%
Other Closure Method	4,383	0.5%
<b>Total</b>	<b>920,447</b>	<b>100.0%</b>

**10** LSC significantly revised/updated the criteria for case reporting/closure in the 2008 CSR Handbook. Four categories -- C-Referred After Legal Assessment, D-Insufficient Merit, E-Client Withdrew, J-Change in Eligibility -- were discontinued. One, L-Extensive Service, was added, and the title of one, B-Brief Service, was changed to Limited Action. See descriptions below of these two and of Counsel and Advice.

**Counsel and Advice** -A case closed in which the program provided legal advice to an eligible client should be closed as Counsel and Advice (e.g., the advocate ascertained and reviewed relevant facts, exercised judgment in interpreting the particular facts presented by the client and in applying the relevant law to the facts presented, and counseled the client concerning his or her legal problem).

**Limited Action** - A case closed in which the program took limited action(s) on behalf of an eligible client that addressed the client's legal problem that is not so complex or extended as to meet the requirements for CSR Category L should be closed as Limited Action. Examples include, communications by letter, telephone or other means to a third party; preparation of a simple legal document such as a routine will or power of attorney

**Extensive Service** - A case closed in which the program undertook extensive research, preparation of complex legal documents, extensive interaction with third parties on behalf of an eligible client, or extensive on-going assistance to clients who are proceeding pro se should be closed as Extensive Service. Some examples of extensive service include preparation of complex advance directives, wills, contracts, real estate documents or other legal documents, or the provision of extensive transactional work.

**Source: Grant Activity Reports – 2009**

## 2009 LSC-Eligible Cases Closed by Case Type and Reason for Closure

	Counsel And Advice	Limited Action	Negotiated Settlement w/o Litig.	Negotiated Settlement with Litig.	Admin Agency Decision	Uncontested Court Decision	Contested Court Decision	Appeals	Other	Extensive Service	Total	Percent*
<b>CONSUMER/FINANCE</b>												
01 – Bankruptcy/Debtor Relief	28,498	2,526	82	135	42	4,724	556	2	210	759	37,534	4.1%
02 – Collection (Including Repossession/Deficiency/Garnishment)	36,755	7,094	865	2,604	82	1,189	1,691	13	164	1,080	51,537	5.6%
03 – Contracts/Warranties	6,267	1,026	219	169	9	67	123	2	29	125	8,036	0.9%
04 – Collection Practices/Creditor Harassment	2,447	835	60	79	4	49	148	2	7	44	3,675	0.4%
05 – Predatory Lending Practices (Not Mortgages)	157	41	7	21	0	0	4	5	2	4	241	0.0%
06 – Loans/Installment Purchase (Not Collections)	867	209	26	24	18	9	13	0	6	25	1,197	0.1%
07 – Public Utilities	2,771	1,379	227	23	26	17	13	0	16	115	4,587	0.5%
08 – Unfair and Deceptive Sales & Practices (Not Real Property)	1,034	209	39	25	8	10	21	0	3	27	1,376	0.1%
09 – Other Consumer/Finance	5,103	1,078	116	113	30	43	68	4	28	104	6,687	0.7%
	<b>83,899</b>	<b>14,397</b>	<b>1,641</b>	<b>3,193</b>	<b>219</b>	<b>6,108</b>	<b>2,637</b>	<b>28</b>	<b>465</b>	<b>2,283</b>	<b>114,870</b>	<b>12.5%</b>
<b>EDUCATION</b>												
12 – Discipline (Including Expulsion and Suspension)	477	130	107	24	126	2	10	4	22	47	949	0.1%
13 – Special Education/Learning Disabilities	717	248	476	84	134	0	16	0	11	174	1,860	0.2%
14 – Access (Including Bilingual, Residency, Testing)	153	494	48	9	5	4	0	0	2	36	751	0.1%
15 – Vocational Education	42	22	4	0	2	0	0	0	0	2	72	0.0%
16 – Student Financial Aid	351	297	11	1	30	0	1	0	2	14	707	0.1%
19 – Other Education	743	1,545	70	11	36	8	10	0	11	48	2,482	0.3%
	<b>2,483</b>	<b>2,736</b>	<b>716</b>	<b>129</b>	<b>333</b>	<b>14</b>	<b>37</b>	<b>4</b>	<b>48</b>	<b>321</b>	<b>6,821</b>	<b>0.7%</b>
<b>EMPLOYMENT</b>												
21 – Employment Discrimination	2,425	176	30	53	46	27	22	2	10	24	2,815	0.3%
22 – Wage Claims and other FLSA Issues	2,072	556	232	210	115	16	44	1	48	106	3,400	0.4%
23 – EITC (Earned Income Tax Credit)	655	697	44	13	88	6	5	0	1	265	1,774	0.2%
24 – Taxes (Not EITC)	1,704	1,382	239	24	317	25	12	1	38	326	4,068	0.4%
25 – Employee Rights	3,208	268	56	10	100	2	31	2	3	23	3,703	0.4%
26 – Agricultural Worker Issues (Not Wage Claims/FLSA Issues)	116	62	53	19	4	0	2	1	1	28	286	0.0%
29 – Other Employment	7,527	2,362	93	93	223	449	89	6	63	176	11,081	1.2%
	<b>17,707</b>	<b>5,503</b>	<b>747</b>	<b>422</b>	<b>893</b>	<b>525</b>	<b>205</b>	<b>13</b>	<b>164</b>	<b>948</b>	<b>27,127</b>	<b>2.9%</b>
<b>FAMILY</b>												
30 Adoption	1,681	169	4	27	1	583	109	2	76	72	2,724	0.3%
31 Custody/Visitation	66,517	9,055	454	4,841	15	3,098	4,668	40	360	1,543	90,591	9.8%
32 Divorce/Separation	76,653	14,280	410	4,623	23	15,828	5,204	78	768	4,825	122,692	13.3%
33 Guardianship	3,317	900	20	87	2	1,083	164	5	64	166	5,808	0.6%
34 Name Change	1,939	588	5	5	7	836	43	0	63	50	3,536	0.4%
35 Parental Rights Termination	1,345	146	1	18	4	53	87	0	7	22	1,683	0.2%
36 Paternity	4,755	1,004	20	145	11	281	287	4	31	151	6,689	0.7%
37 Domestic Abuse	16,987	4,108	408	7,309	23	7,828	7,335	39	177	2,367	46,581	5.1%
38 Support	21,721	2,757	110	1,207	94	763	1,833	16	122	511	29,134	3.2%
39 Other Family	6,971	1,924	56	181	28	410	288	18	101	154	10,131	1.1%
	<b>201,886</b>	<b>34,931</b>	<b>1,488</b>	<b>18,443</b>	<b>208</b>	<b>30,763</b>	<b>20,018</b>	<b>202</b>	<b>1,769</b>	<b>9,861</b>	<b>319,569</b>	<b>34.7%</b>



## 2009 LSC-Eligible Cases Closed by Case Type and Reason for Closure (cont'd)

	Counsel And Advice	Limited Action	Negotiated Settlement w/o Litig.	Negotiated Settlement with Litig.	Admin Agency Decision	Uncontested Court Decision	Contested Court Decision	Appeals	Other	Extensive Service	Total	Percent*
<b>JUVENILE</b>												
41 – Delinquent	297	60	36	707	3	290	626	1	0	34	2,054	0.2%
42 – Neglected/Abused/Dependent	1,540	172	28	358	35	933	1,305	6	19	198	4,594	0.5%
43 – Emancipation	975	569	2	3	34	178	12	0	2	74	1,849	0.2%
44 – Minor Guardian/Conservatorship	3,376	1,117	9	75	2	1,060	221	0	30	360	6,250	0.7%
49 – Other Juvenile	236	89	22	64	20	105	70	1	11	9	627	0.1%
	<b>6,424</b>	<b>2,007</b>	<b>97</b>	<b>1,207</b>	<b>94</b>	<b>2,566</b>	<b>2,234</b>	<b>8</b>	<b>62</b>	<b>675</b>	<b>15,374</b>	<b>1.7%</b>
<b>HEALTH</b>												
51 – Medicaid	9,529	6,350	1,054	679	2,003	20	42	15	67	597	20,356	2.2%
52 – Medicare	909	1,061	48	13	49	2	1	1	2	40	2,126	0.2%
53 – Government Children's Health Insurance Prog.	158	154	34	9	10	1	1	0	1	9	377	0.0%
54 – Home and Community Based Care	190	149	17	23	83	0	5	0	4	23	494	0.1%
55 – Private Health Insurance	201	60	10	0	4	0	1	0	3	13	292	0.0%
56 – Long Term Health Care Facilities	214	116	28	33	42	0	6	0	1	20	460	0.0%
57 – State and Local Health	1,911	833	46	29	35	0	1	0	4	13	2,872	0.3%
59 – Other Health	2,013	2,221	122	54	133	8	10	6	49	164	4,780	0.5%
	<b>15,125</b>	<b>10,944</b>	<b>1,359</b>	<b>840</b>	<b>2,359</b>	<b>31</b>	<b>67</b>	<b>22</b>	<b>131</b>	<b>879</b>	<b>31,757</b>	<b>3.5%</b>
<b>HOUSING</b>												
61 – Federally Subsidized Housing	21,084	9,686	2,217	3,834	1,650	356	1,169	33	150	750	40,929	4.4%
62 – Homeownership/Real Property (Not Foreclosure)	7,287	2,248	357	408	56	156	233	11	113	481	11,350	1.2%
63 – Private Landlord/Tenant	88,525	15,856	1,854	10,245	190	1,171	3,255	29	298	846	122,269	13.3%
64 – Public Housing	6,213	10,651	642	1,208	522	162	404	9	49	220	20,080	2.2%
65 – Mobile Homes	2,088	456	102	239	3	34	104	0	4	48	3,078	0.3%
66 – Housing Discrimination	322	115	85	27	15	2	5	1	4	31	607	0.1%
67 – Mortgage Foreclosures (Not Predatory Lending/Practices)	13,983	3,344	516	735	19	165	335	5	121	713	19,936	2.2%
68 – Mortgage Predatory Lending/Practices	1,044	228	24	62	1	10	45	2	12	65	1,493	0.2%
69 – Other Housing	7,263	2,675	216	434	86	157	188	18	40	278	11,355	1.2%
	<b>147,809</b>	<b>45,259</b>	<b>6,013</b>	<b>17,192</b>	<b>2,542</b>	<b>2,213</b>	<b>5,738</b>	<b>108</b>	<b>791</b>	<b>3,432</b>	<b>231,097</b>	<b>25.1%</b>
<b>INCOME</b>												
71 – TANF	5,505	3,389	978	702	1,308	4	17	5	42	284	12,234	1.3%
72 – Social Security (Not SSDI)	1,874	594	50	10	286	7	9	2	28	89	2,949	0.3%
73 – Food Stamps	10,043	5,706	814	458	620	3	13	2	33	158	17,850	1.9%
74 – SSDI	7,584	1,457	116	37	2,160	12	12	2	47	324	11,751	1.3%
75 – SSI	15,059	4,173	298	186	10,695	23	54	24	197	1,724	32,433	3.5%
76 – Unemployment Compensation	15,172	2,210	56	63	6,627	65	271	49	56	157	24,726	2.7%
77 – Veterans Benefits	428	107	6	6	33	0	2	1	1	19	603	0.1%
78 – State and Local Income Maintenance	2,198	1,600	236	263	295	5	5	0	10	122	4,734	0.5%
79 – Other Income Maintenance	2,320	1,876	345	57	273	113	38	4	21	156	5,203	0.6%
	<b>60,183</b>	<b>21,112</b>	<b>2,899</b>	<b>1,782</b>	<b>22,297</b>	<b>232</b>	<b>421</b>	<b>89</b>	<b>435</b>	<b>3,033</b>	<b>112,483</b>	<b>12.2%</b>

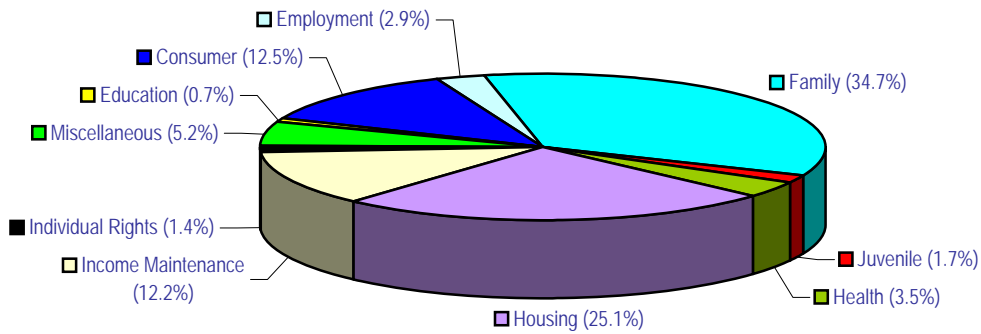
## 2009 LSC-Eligible Cases Closed by Case Type and Reason for Closure (cont'd)

	Counsel And Advice	Limited Action	Negotiated Settlement w/o Litig.	Negotiated Settlement with Litig.	Admin Agency Decision	Uncontested Court Decision	Contested Court Decision	Appeals	Other	Extensive Service	Total	Percent*
<b>INDIVIDUAL</b>												
81 – Immigration/Naturalization	2,054	984	36	18	1,766	12	7	3	71	329	5,280	0.6%
82 – Mental Health	256	78	77	6	4	10	18	0	5	11	465	0.1%
84 – Disability Rights	189	66	11	3	17	2	3	1	1	9	302	0.0%
85 – Civil Rights	497	51	8	12	5	12	5	3	1	10	604	0.1%
86 – Human Trafficking	6	2	0	1	71	0	1	0	0	11	92	0.0%
89 – Other Individual Rights	4,198	1,640	47	68	32	267	98	6	31	77	6,464	0.7%
	7,200	2,821	179	108	1,895	303	132	13	109	447	13,207	1.4%
<b>MISC</b>												
91 – Legal Assistance to Non-Profit Org or Group ( Incl Incorp/Dissolution)	112	90	6	3	22	3	2	0	3	91	332	0.0%
92 – Indian/Tribal Law	685	276	27	352	14	92	60	6	1	96	1,609	0.2%
93 – Licenses (Drivers, Occupational, and Others)	1,664	2,698	23	32	33	35	12	1	4	43	4,545	0.5%
94 – Torts	2,687	301	26	83	0	21	70	0	15	30	3,233	0.4%
95 – Wills/Estates	8,332	6,732	66	31	8	885	122	2	254	751	17,183	1.9%
96 – Advance Directives/Powers of Attorney	2,111	7,520	21	4	2	11	3	0	51	335	10,058	1.1%
97 – Municipal Legal Needs	62	39	0	2	0	0	0	0	2	0	105	0.0%
99 – Other Miscellaneous	6,177	3,909	101	59	111	290	226	3	79	122	11,077	1.2%
	21,830	21,565	270	566	190	1,337	495	12	409	1,468	48,142	5.2%
<b>Totals</b>	<b>564,546</b>	<b>161,275</b>	<b>15,409</b>	<b>43,882</b>	<b>31,030</b>	<b>44,092</b>	<b>31,984</b>	<b>499</b>	<b>4,383</b>	<b>23,347</b>	<b>920,447</b>	
<b>Percentages</b>	<b>61.3%</b>	<b>17.5%</b>	<b>1.7%</b>	<b>4.8%</b>	<b>3.4%</b>	<b>4.8%</b>	<b>3.5%</b>	<b>0.1%</b>	<b>0.5%</b>	<b>2.5%</b>	<b>100.0%</b>	

\* Percentages do not total exactly because of rounding.

Source: Grant Activity Reports – 2009

## 2009 LSC-Eligible Case Services Summary by Case Type



Type of Case	Total Closed Cases	Percent*
Consumer	114,870	12.5%
Education	6,821	0.7%
Employment	27,127	2.9%
Family	319,569	34.7%
Juvenile	15,374	1.7%
Health	31,757	3.5%
Housing	231,097	25.1%
Income Maintenance	112,483	12.2%
Individual Rights	13,207	1.4%
Miscellaneous	48,142	5.2%
<b>Total</b>	<b>920,447</b>	<b>100.00%</b>

\* Percentages do not total exactly because of rounding.

Source: Grant Activity Reports – 2009

## 2009 LSC-Eligible Cases Closed by Case Type

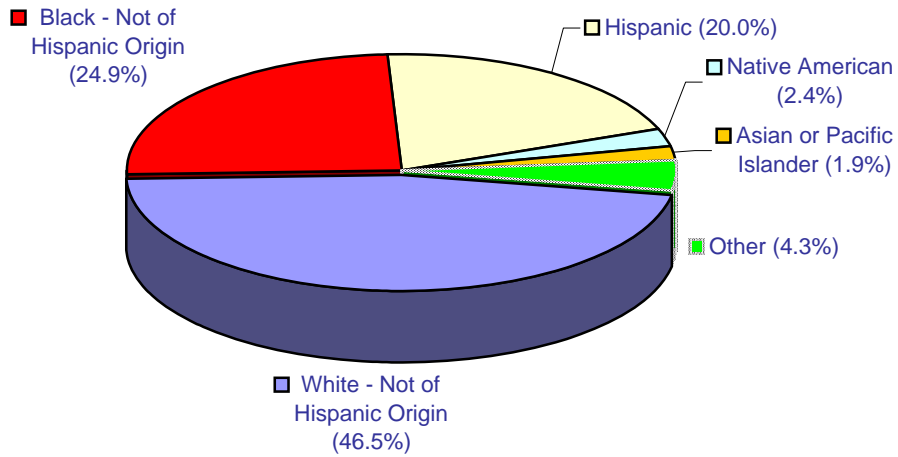
	Number of Cases	Percent*		Number of Cases	Percent*
<b>Consumer/Finance</b>			<b>Health</b>		
Bankruptcy/Debtor Relief	37,534	4.1%	Medicaid	20,356	2.2%
Collection (Incl Repossession/Deficiency/Garnishment)	51,537	5.6%	Medicare	2,126	0.2%
Contracts/Warranties	8,036	0.9%	Government Children's Health Insurance Programs	377	0.0%
Collection Practices/Creditor Harassment	3,675	0.4%	Home and Community Based Care	494	0.1%
Predatory Lending Practices (Not Mortgages)	241	0.0%	Private Health Insurance	292	0.0%
Loans/Installment Purchase (Not Collections)	1,197	0.1%	Long Term Health Care Facilities	460	0.0%
Public Utilities	4,587	0.5%	State and Local Health	2,872	0.3%
Unfair & Deceptive Sales & Prac (Not Real Property)	1,376	0.1%	Other Health	4,780	0.5%
Other Consumer/Finance	6,687	0.7%	<b>Total</b>	<b>31,757</b>	<b>3.5%</b>
<b>Total</b>	<b>114,870</b>	<b>12.5%</b>	<b>Housing</b>		
<b>Education</b>			<b>Income Maintenance</b>		
Discipline (Incl Expulsion and Suspension)	949	0.1%	Federally Subsidized Housing	40,929	4.4%
Special Education/Learning Disabilities	1,860	0.2%	Homeownership/Real Property (Not Foreclosure)	11,350	1.2%
Access (Including Bilingual, Residency, Testing)	751	0.1%	Private Landlord/Tenant	122,269	13.3%
Vocational Education	72	0.0%	Public Housing	20,080	2.2%
Student Financial Aid	707	0.1%	Mobile Homes	3,078	0.3%
Other Education	2,482	0.3%	Housing Discrimination	607	0.1%
<b>Total</b>	<b>6,821</b>	<b>0.7%</b>	Mortgage Foreclosures (Not Predatory Lending/Practices)	19,936	2.2%
<b>Employment</b>			Mortgage Predatory Lending/Practices	1,493	0.2%
Employment Discrimination	2,815	0.3%	Other Housing	11,355	1.2%
Wage Claims and other FLSA Issues	3,400	0.4%	<b>Total</b>	<b>231,097</b>	<b>25.1%</b>
EITC (Earned Income Tax Credit)	1,774	0.2%	<b>Individual Rights</b>		
Taxes (Not EITC)	4,068	0.4%	Immigration/Naturalization	5,280	0.6%
Employee Rights	3,703	0.4%	Mental Health	465	0.1%
Agricultural Worker Issues (Not Wage Claims/FLSA)	286	0.0%	Disability Rights	302	0.0%
Other Employment	11,081	1.2%	Civil Rights	604	0.1%
<b>Total</b>	<b>27,127</b>	<b>2.9%</b>	Human Trafficking	92	0.0%
<b>Family</b>			Other Individual Rights	6,464	0.7%
Adoption	2,724	0.3%	<b>Total</b>	<b>13,207</b>	<b>1.4%</b>
Custody/Visitation	90,591	9.8%	<b>Miscellaneous</b>		
Divorce/Separation	122,692	13.3%	Lgl Assist to Non-Profit Org or Grp (Incl Incorp/Dissol)	332	0.0%
Guardianship	5,808	0.6%	Indian/Tribal Law	1,609	0.2%
Name Change	3,536	0.4%	Licenses (Drivers, Occupational, and Others)	4,545	0.5%
Parental Rights Termination	1,683	0.2%	Torts	3,233	0.4%
Paternity	6,689	0.7%	Wills/Estates	17,183	1.9%
Domestic Abuse	46,581	5.1%	Advance Directives/Powers of Attorney	10,058	1.1%
Support	29,134	3.2%	Municipal Legal Needs	105	0.0%
Other Family	10,131	1.1%	Other Miscellaneous	11,077	1.2%
<b>Total</b>	<b>319,569</b>	<b>34.7%</b>	<b>Total</b>	<b>48,142</b>	<b>5.2%</b>
<b>Juvenile</b>			<b>Total</b>		
Delinquent	2,054	0.2%	<b>920,447</b>	<b>100.0%</b>	
Neglected/Abused/Dependent	4,594	0.5%			
Emancipation	1,849	0.2%			
Minor Guardian/Conservatorship	6,250	0.7%			
Other Juvenile	627	0.1%			
<b>Total</b>	<b>15,374</b>	<b>1.7%</b>			

\* Percentages do not total exactly because of rounding.

Source: Grant Activity Reports – 2009

# Client Demographics

## 2009 Ethnicity of LSC Clients

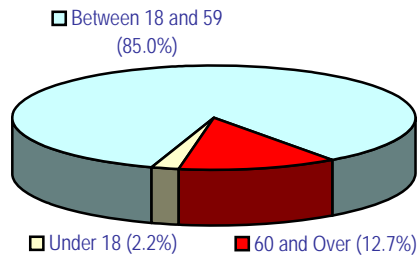


Ethnic Group	Total Individual Clients	Percent*
White - Not of Hispanic Origin	427,866	46.5%
Black - Not of Hispanic Origin	229,102	24.9%
Hispanic	183,941	20.0%
Native American	21,980	2.4%
Asian or Pacific Islander	17,464	1.9%
Other	39,190	4.3%
<b>Total</b>	<b>919,543</b>	<b>100.0%</b>

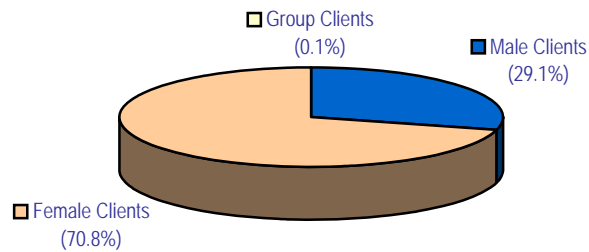
\* Percentages do not total exactly because of rounding.

**Source: Grant Activity Reports – 2009**

## 2009 Age and Gender of LSC Clients<sup>11</sup>



Age Group	Total Individual Clients	Percent
Under 18	20,420	2.2%
Between 18 and 59	782,069	85.0%
60 and Over	117,054	12.7%
<b>Total</b>	<b>919,543</b>	<b>100.0%</b>



Gender/Type	Total Clients	Percent
Male Clients	267,828	29.1%
Female Clients	651,507	70.8%
Group Clients	575	0.1%
<b>Total</b>	<b>919,910</b>	<b>100.0%</b>

<sup>11</sup> Totals by age are not equal to the totals by gender because a few programs were not able to provide complete information.

## 2009 Age, Ethnicity and Gender of LSC Clients<sup>[12]</sup>

	<b>Under Age 18</b>	<b>Ages 18 through 59</b>	<b>Age 60 and Over</b>	<b>Total Individual Clients</b>
White - Not of Hispanic Origin	4,109	363,954	59,803	427,866
Black - Not of Hispanic Origin	3,447	199,041	26,614	229,102
Hispanic Origin	6,374	157,438	20,129	183,941
Native American	654	18,103	3,223	21,980
Asian or Pacific Islander	195	14,319	2,950	17,464
Other	5,641	29,214	4,335	39,190
<b>Total</b>	<b>20,420</b>	<b>782,069</b>	<b>117,054</b>	<b>919,543</b>

<b>Men</b>	267,828
<b>Women</b>	651,507
<b>Groups</b>	575
<b>Total</b>	<b>919,910</b>

<sup>12</sup> Totals by age and ethnicity are not equal to the totals by gender because a few programs were not able to provide complete information.



# Private Attorney Involvement

## 2009 Private Attorney Involvement (PAI) for LSC Programs <sup>[13]</sup>

Component Type <sup>[14]</sup>	Cases Referred	Cases Closed	Attorneys Accepting Referrals
Pro Bono	69,404	65,022	27,928
Contract/Judicare	36,566	33,653	2,654
Other PAI	17,614	5,069	3,507
<b>Total</b>	<b>123,584</b>	<b>103,744</b>	<b>34,089</b>

**13 Private Attorney Involvement (PAI)** is an LSC program to involve private attorneys (those not working for an LSC grantee) in the delivery of legal services to low-income clients eligible for LSC-funded legal assistance. As provided in 45 C.F.R. 1614, LSC grantees are required to devote at least 12.5% of the amount of their LSC Basic Field-General funding to this method of delivery of legal services.

**14 Pro Bono** – PAI programs in which attorneys are recruited and assisted to provide legal services to eligible clients without compensation.

**Contract/Judicare** – PAI programs in which attorneys are compensated at a reduced rate to provide legal services to eligible clients, either

(1) Under a **contract** with the grantee program under which an attorney receives a reduced fee either for a single case or for a set number of cases.

(2) As a member of a “**Judicare**” panel where all private attorneys who practice in the service area are invited to participate. Attorneys may elect on a case-by-case basis whether to take a client. Under some models clients may choose among panel attorneys while under others, panel attorneys are assigned to a client by rotation.

**Other PAI** – Any PAI program not falling into the pro bono or contract/Judicare category, such as co-counseling arrangements with individual attorneys or law firms.

**Source: Grant Activity Reports – 2009**

## 2008 - 2009 PAI with Percentage Change for LSC Programs

### Pro Bono

	Cases Closed	Attorneys Accepting Referrals
2008	57,719	26,749
2009	65,022	27,928
Percentage Change	12.7%	4.4%

### Contract/Judicare

	Cases Closed	Attorneys Accepting Referrals
2008	31,052	4,942
2009	33,653	2,654
Percentage Change	8.4%	-46.3%

### Other PAI

	Cases Closed	Attorneys Accepting Referrals
2008	4,397	4,027
2009	5,069	3,507
Percentage Change	15.3%	-12.9%

# Staffing

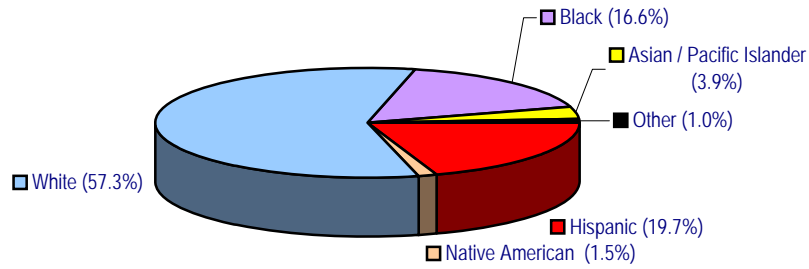
## 2009 Staffing Level with Average Salary and Experience for LSC Programs\*

Position	Full-time	Attorneys	Women	Men	Average Years In Profession	Average Salary
<b>Executive Director</b>	136	132	47	89	29.9	109,361
<b>Deputy Director</b>	93	80	49	44	26.9	94,905
<b>Director of Litigation</b>	77	77	27	50	28.1	88,827
<b>Managing Attorney</b>	644	644	357	287	21.3	72,016
<b>Supervising Attorney</b>	445	444	268	177	19.2	73,416
<b>Staff Attorney</b>	2,802	2,797	1,914	888	10.5	55,015
<b>Paralegal</b>	1,577	12	1,298	279	16.4	39,137
<b>Information Technology Staff</b>	127	11	32	95	13.8	55,129
<b>PAI Coordinator</b>	115	34	99	16	18.5	49,720
<b>Training Responsible Person</b>	7	4	6	1	22.1	69,285
<b>Financial Professional</b>	254	5	190	64	23.3	57,417
<b>Management Professional</b>	250	22	198	52	21.9	62,926
<b>Law Clerk</b>	96	4	70	26	0.9	25,114
<b>Senior Aide</b>	4	0	3	1	8.5	25,375
<b>Administrative Assistant</b>	348	0	336	12	21.8	40,258
<b>Secretarial/Clerical</b>	1,566	5	1,521	45	17.5	32,569
<b>Other Position/Job</b>	344	29	263	81	13.7	38,801
<b>Total / Average</b>	<b>8,885</b>	<b>4,300</b>	<b>6,678</b>	<b>2,207</b>	<b>15.9</b>	<b>50,630</b>

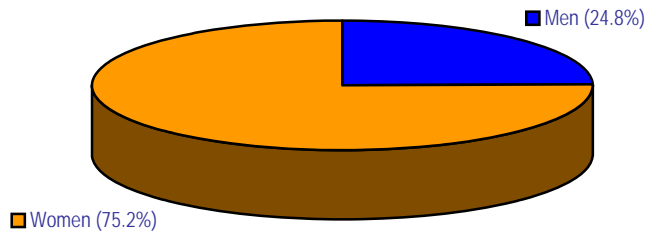
\* Figures include all full-time (90% and above) staff members who were employed for over 6 months in 2009 even if terminated prior to 12/31/09. Figures do not include sub-recipient staffing.

Source: Grant Activity Reports – 2009

## 2009 Staff Ethnicity and Gender for LSC Programs\*



Ethnic Group	Number of Staff	Percent
White	5,094	57.3%
Black	1,479	16.6%
Hispanic	1,752	19.7%
Native American	130	1.5%
Asian / Pacific Islander	343	3.9%
Other	87	1.0%
<b>Total</b>	<b>8,885</b>	<b>100.0%</b>



Gender	Number of Staff	Percent
Men	2,207	24.8%
Women	6,678	75.2%
<b>Total</b>	<b>8,885</b>	<b>100.0%</b>

\* Figures include all full-time (90% and above) staff members who were employed for over 6 months in 2009 even if terminated prior to 12/31/09. Figures do not include sub-recipient staffing.

Source: Grant Activity Reports – 2009

## 2009 Summary of Staff Positions by Job Classification, Ethnicity and Gender for LSC Programs\*

	White		Black		Hispanic		Native American		Asian/Pac		Other		Total		Total
	Male	Female	Male	Female	Male	Female	Male	Female	Male	Female	Male	Female	Male	Female	
01-Executive Director	70	26	10	10	5	6	2	3	2	1	0	1	89	47	136
03-Deputy Director	35	39	4	4	5	3	0	0	0	2	0	1	44	49	93
05-Director of Litigation	46	21	1	2	1	3	1	1	1	0	0	0	50	27	77
07-Managing Attorney	212	251	26	58	38	38	3	3	8	6	0	1	287	357	644
09-Supervising Attorney	138	192	14	42	16	23	1	2	7	7	1	2	177	268	445
11-Staff Attorney	668	1,279	61	250	107	218	5	24	36	113	11	31	888	1,915	2,803
13-Paralegal	114	581	50	301	93	347	0	22	19	31	3	16	279	1,298	1,577
14-Information Technology Staff	61	21	11	5	11	4	1	2	10	0	1	0	95	32	127
15-PAI Coordinator	10	57	1	25	3	15	0	0	2	2	0	0	16	99	115
17-Training Responsible Person	1	2	0	3	0	1	0	0	0	0	0	0	1	6	7
18-Financial Professional	36	111	11	34	9	21	0	5	7	17	1	2	64	190	254
19-Management Professional	29	95	5	62	16	34	1	0	0	6	1	1	52	198	250
21-Law Clerk	15	42	2	14	3	9	1	1	5	2	0	2	26	70	96
23-Senior Aide	1	1	0	2	0	0	0	0	0	0	0	0	1	3	4
25-Administrative Assistant	7	140	3	73	1	110	0	8	1	3	0	2	12	336	348
27-Secretarial/Clerical	14	622	8	334	20	486	1	36	1	35	1	8	45	1,521	1,566
99-Other Position/Job	28	129	14	39	31	75	2	5	6	13	0	1	81	262	343
<b>Total</b>	<b>1,485</b>	<b>3,609</b>	<b>221</b>	<b>1,258</b>	<b>359</b>	<b>1,393</b>	<b>18</b>	<b>112</b>	<b>105</b>	<b>238</b>	<b>19</b>	<b>68</b>	<b>2,207</b>	<b>6,678</b>	<b>8,885</b>

\* Figures include all full-time (90% and above) staff members who were employed for over 6 months in 2009 even if terminated prior to 12/31/09. Figures do not include sub-recipient staffing.

Source: Grant Activity Reports – 2009

## 2009 Summary of LSC Program Staffing Levels by Job Classification, Years of Experience and Average Salary<sup>15</sup>

YEARS OF EXPERIENCE	DIRECTOR		DEPUTY DIRECTOR		DIRECTOR OF LITIGATION		MANAGING ATTORNEY	
	# OF POSITIONS	AVERAGE SALARY	# OF POSITIONS	AVERAGE SALARY	# OF POSITIONS	AVERAGE SALARY	# OF POSITIONS	AVERAGE SALARY
0-1 YEAR	0	0	0	0	0	0	2	48,218
2 YEARS	0	0	0	0	0	0	2	59,962
3 YEARS	0	0	0	0	0	0	7	44,224
4 YEARS	0	0	0	0	0	0	8	47,292
5 YEARS	0	0	1	47,000	0	0	11	49,153
6-7 YEARS	1	111,057	0	0	2	55,650	28	54,626
8-9 YEARS	1	120,647	1	52,730	2	53,900	30	61,866
10-14 YEARS	6	83,010	9	69,738	3	64,952	92	66,062
15-19 YEARS	7	106,236	10	84,134	3	82,798	98	71,440
20 OR MORE YEARS	121	110,742	72	100,797	67	92,199	366	77,784
<b>Total Count / Avg. Salary</b>	<b>136</b>	<b>109,361</b>	<b>93</b>	<b>94,905</b>	<b>77</b>	<b>88,827</b>	<b>644</b>	<b>72,016</b>

YEARS OF EXPERIENCE	SUPERVISING ATTORNEY		STAFF ATTORNEY		PARALEGAL		INFORMATION TECHNOLOGY STAFF	
	# OF POSITIONS	AVERAGE SALARY	# OF POSITIONS	AVERAGE SALARY	# OF POSITIONS	AVERAGE SALARY	# OF POSITIONS	AVERAGE SALARY
0-1 YEAR	2	53,950	204	42,833	70	27,414	3	32,960
2 YEARS	1	56,450	293	45,289	104	29,572	4	45,007
3 YEARS	7	50,566	291	46,063	64	31,539	4	39,658
4 YEARS	9	54,396	259	47,183	78	32,489	6	49,535
5 YEARS	9	56,336	188	49,260	55	33,144	6	46,523
6-7 YEARS	29	59,707	254	52,632	96	33,997	14	45,638
8-9 YEARS	34	62,389	203	56,088	88	35,548	17	49,488
10-14 YEARS	64	68,007	338	58,918	226	38,545	26	54,867
15-19 YEARS	86	73,833	252	64,496	193	41,259	15	60,406
20 OR MORE YEARS	204	81,375	520	69,879	603	45,244	32	67,958
<b>Total Count / Avg. Salary</b>	<b>445</b>	<b>73,416</b>	<b>2,802</b>	<b>55,015</b>	<b>1,577</b>	<b>39,137</b>	<b>127</b>	<b>55,129</b>

<sup>15</sup> Years of Experience rounded to the nearest year. Figures include all full-time (90% and above) staff members who were for over 6 months in 2009, even if terminated prior to 12/31/09. Figures do not include sub-recipient staffing.



**2009 Summary of LSC Program Staffing Levels by Job Classification,  
Years of Experience and Average Salary<sup>15</sup>**

YEARS OF EXPERIENCE	PAI COORDINATOR		TRAINING RESPONSIBLE PERSON		FINANCIAL PROFESSIONAL		MANAGEMENT PROFESSIONAL		LAW CLERK	
	# OF POSITIONS	AVERAGE SALARY	# OF POSITIONS	AVERAGE SALARY	# OF POSITIONS	AVERAGE SALARY	# OF POSITIONS	AVERAGE SALARY	# OF POSITIONS	AVERAGE SALARY
0-1 YEAR	2	36,807	0	0	1	50,000	1	38,800	79	22,026
2 YEARS	7	35,906	0	0	4	52,185	5	52,731	9	33,733
3 YEARS	0	0	0	0	3	47,099	6	43,704	4	41,872
4 YEARS	6	45,872	0	0	3	41,547	4	47,217	1	56,009
5 YEARS	4	42,229	0	0	6	34,362	7	45,387	0	0
6-7 YEARS	4	38,423	0	0	9	51,597	15	53,329	1	43,300
8-9 YEARS	6	44,515	2	54,375	9	51,511	11	54,680	0	0
10-14 YEARS	12	45,689	1	31,452	25	52,159	32	60,551	0	0
15-19 YEARS	19	49,781	0	0	31	55,788	30	63,017	2	50,244
20 OR MORE YEARS	55	55,160	4	86,199	163	60,685	139	67,846	0	0
<b>Total Count / Avg. Salary</b>	<b>115</b>	<b>49,720</b>	<b>7</b>	<b>69,285</b>	<b>254</b>	<b>57,417</b>	<b>250</b>	<b>62,926</b>	<b>96</b>	<b>25,114</b>

YEARS OF EXPERIENCE	SENIOR AIDE		ADMINISTRATIVE ASSISTANT		SECRETARIAL/ CLERICAL		OTHER	
	# OF POSITIONS	AVERAGE SALARY	# OF POSITIONS	AVERAGE SALARY	# OF POSITIONS	AVERAGE SALARY	# OF POSITIONS	AVERAGE SALARY
0-1 YEAR	1	19,760	5	29,689	47	23,639	26	27,862
2 YEARS	0	0	6	26,439	75	26,757	21	31,593
3 YEARS	0	0	6	35,465	72	26,515	17	32,748
4 YEARS	0	0	7	33,192	60	27,054	11	29,320
5 YEARS	0	0	9	33,902	53	27,903	12	46,589
6-7 YEARS	1	34,593	16	32,412	87	27,893	34	38,623
8-9 YEARS	0	0	24	38,464	124	29,615	26	39,340
10-14 YEARS	2	23,574	39	38,230	233	32,066	68	43,770
15-19 YEARS	0	0	36	43,241	160	34,161	31	39,543
20 OR MORE YEARS	0	0	200	42,315	655	36,394	98	40,643
<b>Total Count / Avg. Salary</b>	<b>4</b>	<b>25,375</b>	<b>348</b>	<b>40,258</b>	<b>1,566</b>	<b>32,569</b>	<b>344</b>	<b>38,801</b>

<sup>15</sup> Years of Experience rounded to the nearest year. Figures include all full-time (90% and above) staff members who were employed for over 6 months in 2009, even if terminated prior to 12/31/09. Figures do not include sub-recipient staffing.

## 2008 - 2009 Staffing Levels for LSC Programs

Position	2008	2009	Percentage Change From 2008
Attorneys <sup>[16]</sup>	4,144	4,174	0.7%
Paralegals	1,582	1,577	-0.3%
Other Staff Members	3,166	3,134	-1.0%
<b>Total</b>	<b>8,892</b>	<b>8,885</b>	<b>-0.1%</b>

\* Figures include all full-time (90% and above) staff members who were employed for over 6 months in 2009 even if terminated prior to 12/31/09. Figures do not include sub-recipient staffing.

## 2009 Full-Time Equivalentents (FTE's) - As of 12/31/09

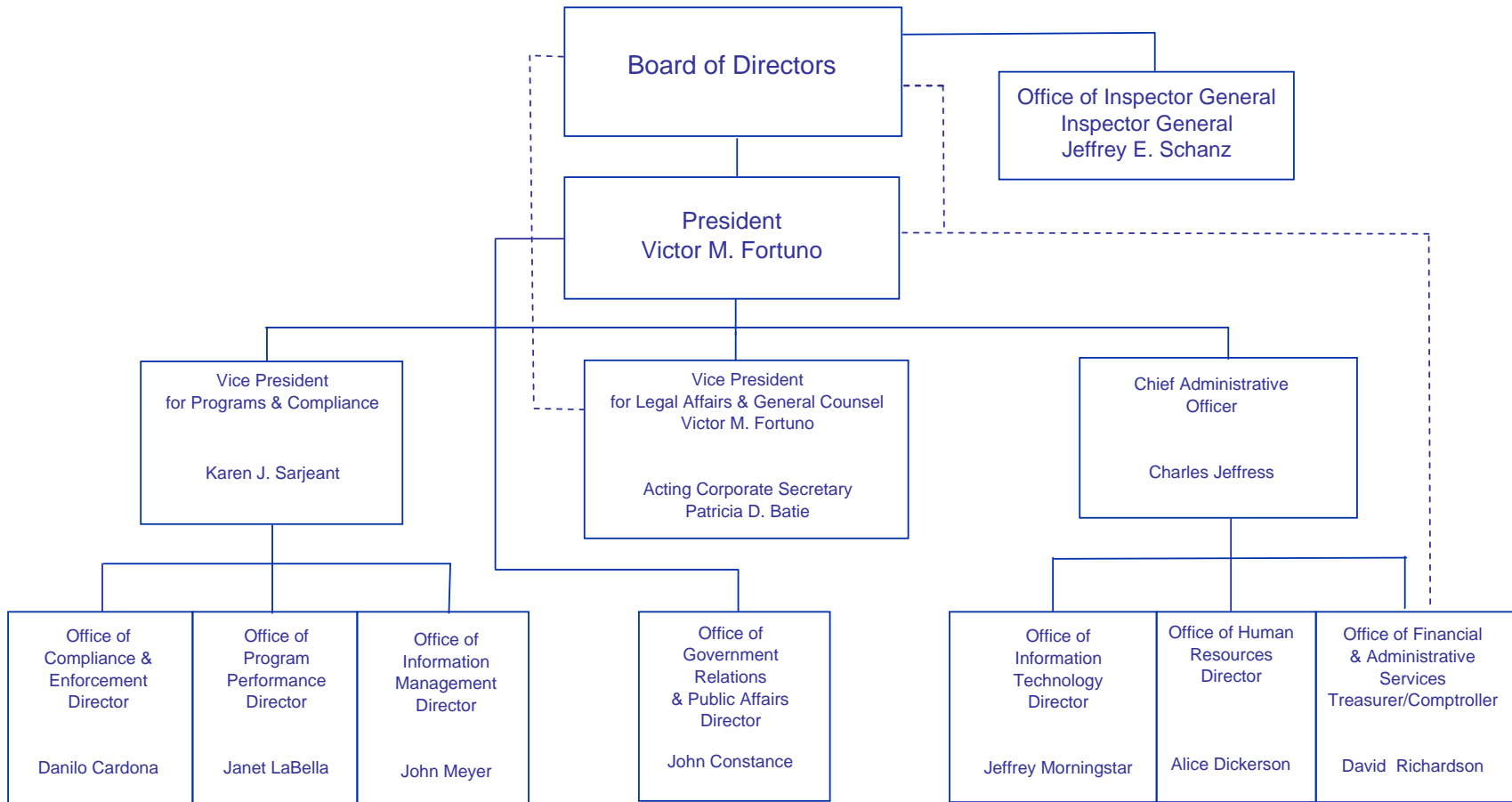
Attorneys	4,606
Paralegals	1,735
Other	3,503
<b>Total</b>	<b>9,844</b>

<sup>16</sup> The computation of the number of attorneys includes all Job Codes 5 to 11 (Litigation Director to Staff Attorney) and all Directors and Deputy Directors who are attorneys. It does not include the small number of attorneys serving in non-attorney positions – e.g. Management Professionals who are attorneys.

Source: Grant Activity Reports – 2009

# LSC Organizational Chart

(as of June 2010)



# LEGAL SERVICES CORPORATION

## Board of Directors

**John G. Levi**  
Chicago, Illinois  
Chairman

**Martha Minow**  
Cambridge, Massachusetts  
Vice Chair

**Sharon L. Browne**  
Sacramento, California

**Jonann C. Chiles**  
Little Rock, Arkansas

**Thomas A. Fuentes**  
Lake Forest, California

**Robert J. Grey, Jr.**  
Richmond, Virginia

**Charles N. W. Keckler**  
Arlington, Virginia

**Victor B. Maddox**  
Louisville, Kentucky

**Thomas R. Meites**  
Chicago, Illinois

**Laurie Mikva**  
Evanston, Illinois

**Hon. Sarah M. Singleton**  
Santa Fe, New Mexico

---

**Victor M. Fortuno**  
President