

# Final 2011 Sport Halibut Harvest Estimates

## Alaska Department of Fish and Game

### 1. Area 2C Harvest:

Table 1.1. Area 2C sport halibut harvest estimates by sector and subarea, 2011.

Subarea	Charter			Non-Charter		
	Avg. Wt. (lb) <sup>a</sup>	No. Fish	Yield (lb)	Avg. Wt. (lb)	No. Fish	Yield (lb)
Ketchikan	10.5	2,575	27,106	14.8	4,176	61,661
Prince of Wales Island	8.7	8,419	72,863	11.7	8,457	98,937
Petersburg/Wrangell	14.3	1,585	22,719	21.6	6,954	149,861
Sitka	8.7	14,486	125,611	21.5	3,943	84,657
Juneau	9.8	3,693	36,079	12.8	10,602	135,986
Haines/Skagway		0	0	12.8	706	9,055
Glacier Bay	10.2	5,787	59,246	19.7	7,364	145,292
Area 2C	9.4	36,545	343,625	16.2	42,202	685,450

<sup>a</sup>-Average net weight (headed and gutted), rounded to the nearest 0.1 lb.

Table 1.2. Approximate 95% confidence intervals for yield estimates (million pounds).

Sector	Estimate	StdErr <sup>a</sup>	Lower Limit	Upper Limit
Charter	0.344	0.015	0.315	0.372
Noncharter	0.685	0.046	0.595	0.776
Overall	1.029	0.051	0.929	1.129

<sup>a</sup>-Standard errors are preliminary estimates.

Table 1.3. Comparison of October 2011 yield projections to final estimates (million pounds).

Sector	Projection	Final	Projection Error (%)
Charter	0.388	0.344	+12.9%
Noncharter	0.925	0.685	+34.9%
Overall	1.313	1.029	+27.6%

Table 1.4. Area 2C sport halibut harvest history by sector.

Year	Charter				Non-Charter			Total Sport Harvest			
	No. Fish	Avg. Wt. (lb)	Yield (M lb)	GHL (M lb)	No. Fish	Avg. Wt. (lb)	Yield (M lb)	No. Fish	Avg. Wt. (lb)	Yield (M lb)	
1995	49,615	19.9	0.986	No GHL	39,707	19.3	0.765	89,322	19.6	1.751	
1996	53,590	22.1	1.187		41,307	22.8	0.943	94,897	22.4	2.129	
1997	51,181	20.2	1.034		53,205	21.4	1.139	104,386	20.8	2.172	
1998	54,364	29.1	1.584		42,580	21.5	0.917	96,944	25.8	2.501	
1999	52,735	17.8	0.939		44,301	20.4	0.904	97,036	19.0	1.843	
2000	57,208	19.7	1.130		54,432	20.6	1.121	111,640	20.2	2.251	
2001	66,435	18.1	1.202		43,519	16.6	0.721	109,954	17.5	1.923	
2002	64,614	19.7	1.275		40,199	20.3	0.814	104,813	19.9	2.090	
2003	73,784	19.1	1.412		1.432	45,697	18.5	0.846	119,481	18.9	2.258
2004	84,327	20.7	1.750		1.432	62,989	18.8	1.187	147,316	19.9	2.937
2005	102,206	19.1	1.952	1.432	60,364	14.0	0.845	162,570	17.2	2.798	
2006	90,471	19.9	1.804	1.432	50,520	14.3	0.723	140,991	17.9	2.526	
2007	109,835	17.5	1.918	1.432	68,498	16.5	1.131	178,333	17.1	3.049	
2008	102,965	19.4	1.999	0.931	66,296	19.1	1.265	169,261	19.3	3.264	
2009	53,602	23.3	1.249	0.788	65,549	17.3	1.133	119,151	20.0	2.383	
2010	41,202	26.4	1.086	0.788	52,896	16.7	0.885	94,098	20.9	1.971	
2011	36,545	9.4	0.344	0.788	42,202	16.2	0.685	78,747	13.1	1.029	

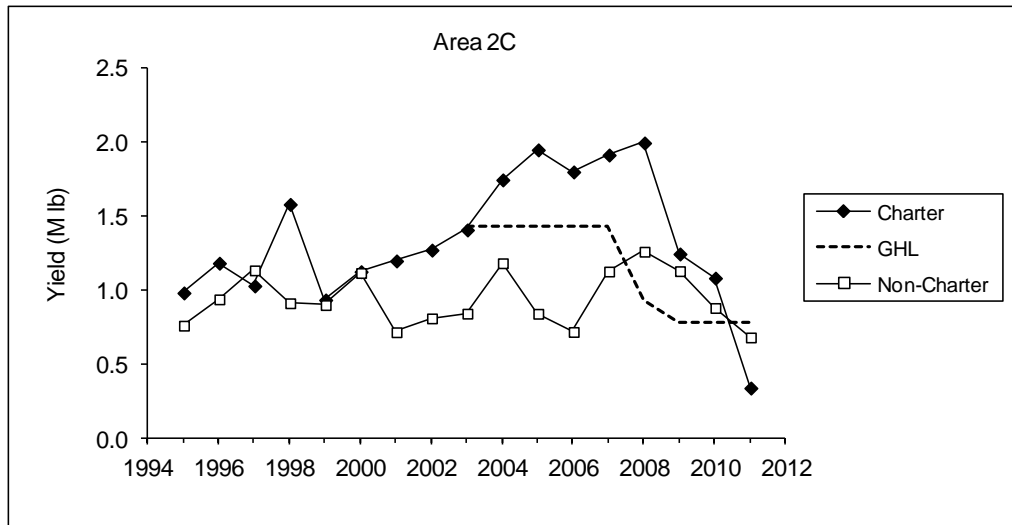


Table 1.5. History of Area 2C charter regulations.

Year	Charter Regulations
1995-2005	Two-fish bag limit (no size restrictions), no limit on crew retention.
2006	Two-fish bag limit (no size limit), state EO prohibiting crew harvest 5/26-12/31.
2007	Two-fish bag limit (1 under 32" eff. 6/1), no crew retention 5/1-12/31 (State EO and Federal Rule).
2008	Two-fish bag limit (1 under 32"), except one-fish bag limit Jun 1-10 (halted by injunction).
2009	One fish (no size limit), no harvest by skipper & crew, line limit (effective June 5).
2010	One fish (no size limit), no harvest by skipper & crew, line limit.
2011	One fish with maximum size limit of 37", no harvest by skipper and crew, line limit.

## 2. Area 3A Harvest:

Table 2.1. Area 3A sport halibut harvest estimates by sector and subarea, 2011.

Subarea	Charter			Non-Charter		
	Avg. Wt. (lb) <sup>a</sup>	No. Fish	Yield (lb)	Avg. Wt. (lb)	No. Fish	Yield (lb)
Central Cook Inlet	14.6	45,535	664,249	13.3	35,961	478,212
Lower Cook Inlet	14.8	74,485	1,102,176	11.3	47,547	536,460
Kodiak	14.5	12,984	188,582	15.9	8,172	130,260
North Gulf Coast	13.9	39,250	546,737	10.2	16,432	167,454
Eastern PWS	19.6	5,132	100,644	14.7	8,213	120,636
Western PWS	16.1	2,730	44,085	14.4	11,129	160,153
Yakutat	35.0	3,576	125,307	21.1	1,010	21,340
Glacier Bay	35.9	601	21,587		0	0
Area 3A	15.2	184,293	2,793,367	12.6	128,464	1,614,514

<sup>a</sup> – Average net weight, rounded to the nearest 0.1 lb.

Table 2.2. Approximate 95% confidence intervals for yield estimates (million pounds).

Sector	Estimate	StdErr	Lower Limit	Upper Limit
Charter	2.793	0.128	2.542	3.045
Non-Charter	1.615	0.090	1.438	1.791
Overall	4.408	0.158	4.099	4.717

Table 2.3. Comparison of October 2011 yield projections to final estimates (million pounds).

Sector	Projection	Final	Projection Error (%)
Charter	2.837	2.793	1.6%
Non-Charter	1.704	1.615	5.5%
Overall	4.541	4.408	3.0%

Table 2.4. Area 3A sport halibut harvest history by sector.

Year	Charter				Non-Charter			Total Sport Harvest		
	No. Fish	Avg. Wt. (lb)	Yield (M lb)	GHL (M lb)	No. Fish	Avg. Wt. (lb)	Yield (M lb)	No. Fish	Avg. Wt. (lb)	Yield (M lb)
1995	137,843	20.6	2.845	No GHL	95,206	17.5	1.666	233,049	19.4	4.511
1996	142,957	19.7	2.822		108,812	17.6	1.918	251,769	18.8	4.740
1997	152,856	22.3	3.413		119,510	17.6	2.100	272,366	20.2	5.514
1998	143,368	20.8	2.985		105,876	16.2	1.717	249,244	18.9	4.702
1999	131,726	19.2	2.533		99,498	17.0	1.695	231,224	18.3	4.228
2000	159,609	19.7	3.140		128,427	16.9	2.165	288,036	18.4	5.305
2001	163,349	19.2	3.132		90,249	17.1	1.543	253,598	18.4	4.675
2002	149,608	18.2	2.724		93,240	15.9	1.478	242,848	17.3	4.202
2003	163,629	20.7	3.382		118,004	17.3	2.046	281,633	19.3	5.427
2004	197,208	18.6	3.668		134,960	14.4	1.937	332,168	16.9	5.606
2005	206,902	17.8	3.689	127,086	15.6	1.984	333,988	17.0	5.672	
2006	204,115	17.9	3.664	114,887	14.6	1.674	319,002	16.7	5.337	
2007	236,133	16.9	4.002	166,338	13.7	2.281	402,471	15.6	6.283	
2008	198,108	17.0	3.378	145,286	13.4	1.942	343,394	15.5	5.320	
2009	167,599	16.3	2.734	150,205	13.5	2.023	317,804	15.0	4.758	
2010	177,460	15.2	2.698	124,088	12.8	1.587	301,548	14.2	4.285	
2011	184,293	15.2	2.793	3.650	128,464	12.6	1.615	312,757	14.1	4.408

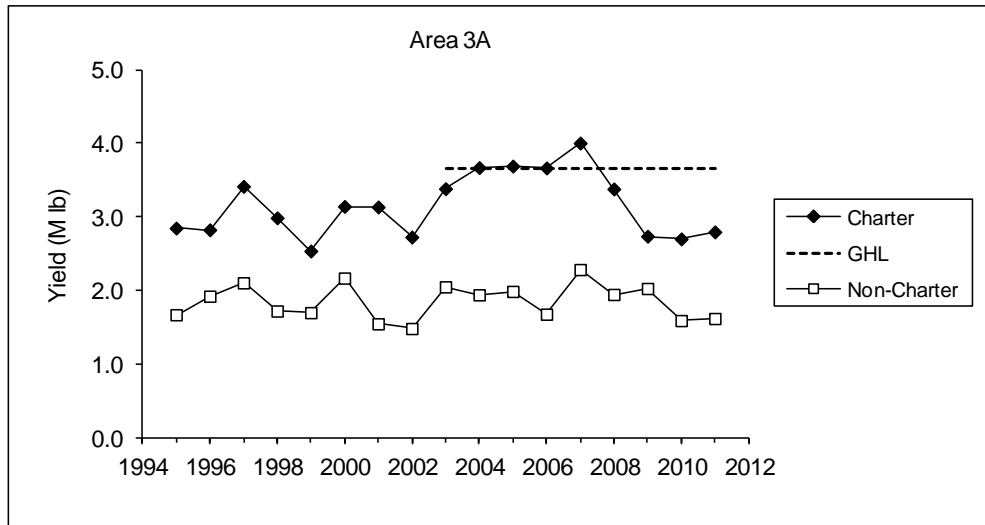


Table 2.5. History of Area 3A charter regulations.

Year	Charter Regulations
1995-2006	Two-fish bag limit (no size restrictions), no limit on crew retention
2007	Two-fish bag limit (no size restrictions), state EO prohibiting crew harvest 5/1-12/31.
2008	Two-fish bag limit (no size restrictions), state EO prohibiting crew harvest 5/24-9/1.
2009	Two-fish bag limit (no size restrictions), state EO prohibiting crew harvest 5/23-9/1.
2010	Two-fish bag limit (no size restrictions), no limit on crew retention
2011	Two-fish bag limit (no size restrictions), no limit on crew retention

### 3. Comparison of Logbook and Statewide Harvest Survey Estimates

Table 3.1. Comparison of estimates of charter halibut harvest biomass (yield) based on numbers of fish from logbooks and from Statewide Harvest Survey estimates, 2006-2011.

Area	Year	Logbook		Statewide Harvest Survey	
		Yield (M lb)	StdErr <sup>a</sup>	Yield (M lb)	StdErr
2C	2006	2.063	0.052	1.804	0.089
	2007	2.015	0.028	1.918	0.085
	2008	1.974	0.025	1.999	0.099
	2009	1.187	0.022	1.249	0.071
	2010	1.249	0.040	1.086	0.077
	2011	0.452	0.005	0.344	0.015
3A	2006	4.689	0.072	3.664	0.108
	2007	4.229	0.059	4.002	0.120
	2008	3.865	0.063	3.378	0.142
	2009	3.044	0.055	2.734	0.133
	2010	3.238	0.123	2.698	0.116
	2011	3.308	0.133	2.793	0.128

<sup>a</sup>-Standard errors for Area 2C are preliminary.

