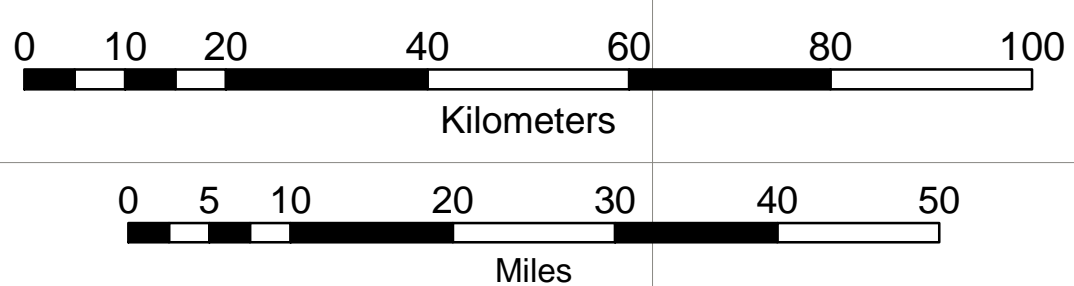
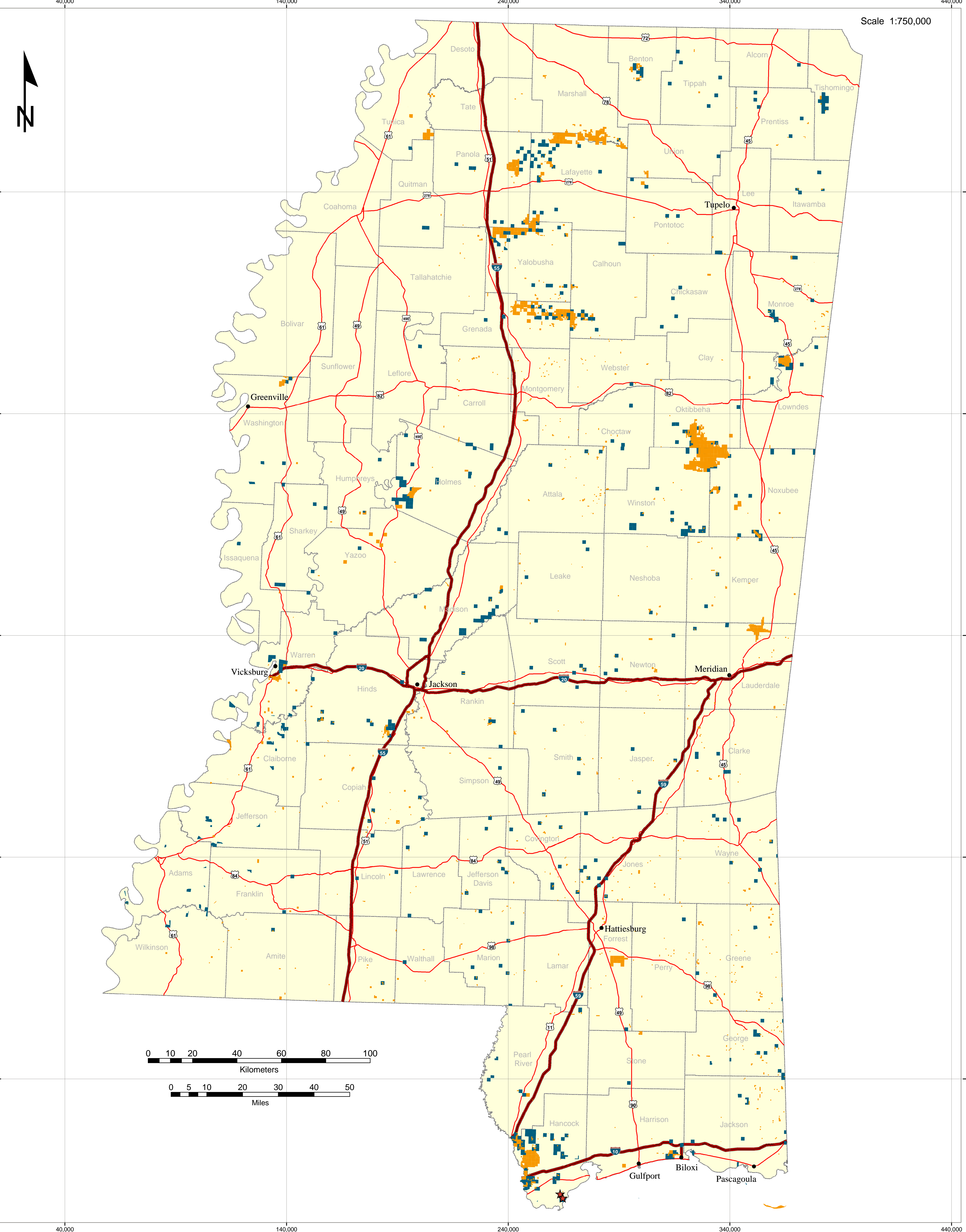


Mississippi

Federal Mineral Ownership

Scale 1:750,000



Federal Mineral Ownership

- Aliquot Part*
- Nominal Section**

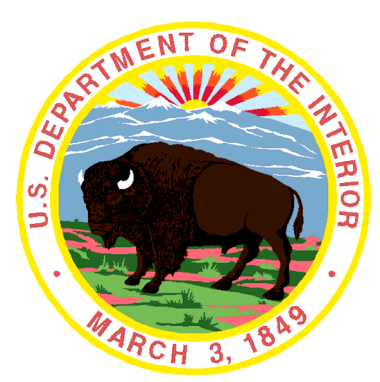
* Parcels described as aliquot parts are based on specific aliquot part legal descriptions.

** Parcels described as nominal sections contain federal minerals within the section but are not based on aliquot part descriptions.

- ★ BLM Land Tracts
- Interstate Highway
- U.S. Highway
- County Boundary
- Cities

Projection: UTM 16 N
Datum: North American Datum 1983

Sources: BLM, Jackson Field Office
USGS - National Elevation Data
Environmental Systems Research Institute
Geographic Data Technologies



No warranty is made by the Bureau of Land Management as to the accuracy, reliability, or completeness of this data for individual use or aggregate use with other data.

This map does not include Federal Mineral Ownership under U.S. Forest Service lands.