

Investigating the Role of Biogeochemical and Biophysical Processes in the NHL Using an Efficient Scalable Earth System

Atul K Jain

Laxmikant Kalé, Rahul Barman, Celso Mendes,
Gengbin Zheng, Radha Nandkumar

University of Illinois, Urbana, IL 61801

Email: jain1@uiuc.edu

Collaborators

Gordon Bonan (NCAR), Mariana Vertenstein (NCAR)
A. David McGuire (U of A), Forrest Hoffman (ORNL)

Objectives

- Using the coupled ISAM-CESM framework to evaluate key interactions amongst Earth's climate and terrestrial processes in the Northern High Latitude regions (NHL).
 - ISAM is a land surface model (equivalent to NCAR's land surface model CLM)
- Applying a novel load-balancing mechanisms to the ISAM to achieve dynamic and improved modeling scalability.

*Studying the key interactions
amongst Earth's climate and
terrestrial processes in the
Northern High Latitude (NHL)
regions*

Background and Issues

- Studying the vulnerability of permafrost Carbon using models require new process knowledge
 - Particularly the processes that affect
 - thawing permafrost
 - wetland drying
 - fires/land use change
- Key Areas of Progress Needed:
 - Improvements of
 - large-scale permafrost models
 - coupled large-scale permafrost-carbon models
 - coupled large-scale permafrost-carbon cycle - climate models

Missing Gaps in Modeling Studies

- *Driving Data Sets (Initial Conditions):* What new data sets can be developed to drive models or to specify model initial conditions?
 - soil carbon maps, wetland maps, ground ice maps, etc.
- *Model Evaluation:* What new data sets can be developed to better evaluate models?
 - soil carbon maps, active layer dynamics, etc.

Missing Gaps in Modeling Studies

- *Driving Data Sets (Initial Conditions):* What new data sets can be developed to drive models or to specify model initial conditions?
 - soil carbon maps, wetland maps, ground ice maps, etc.
- *Model Evaluation:* What new data sets can be developed to better evaluate models?
 - soil carbon maps, active layer dynamics, etc.

Community level efforts are needed

Next Generation Ecosystem Experiment (NGEE)

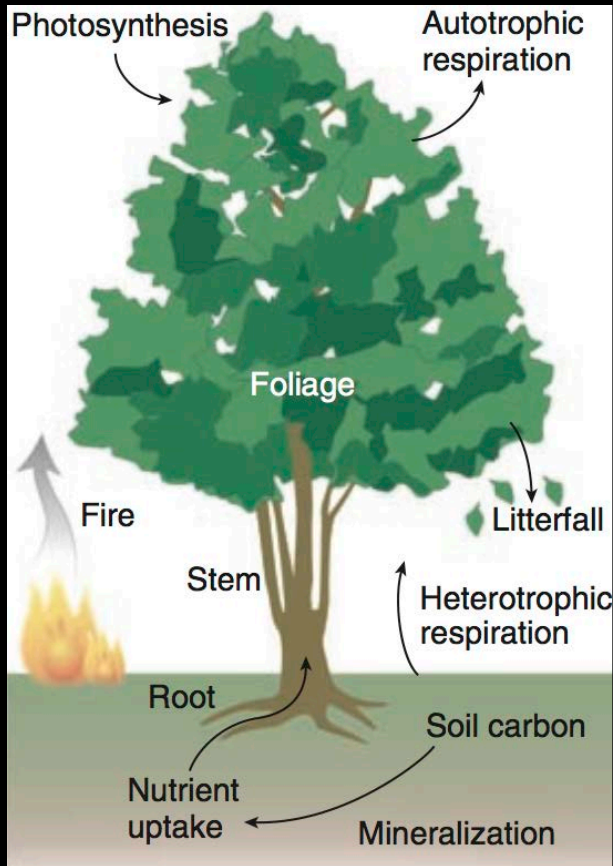
Vulnerability of Permafrost Carbon Research Coordination Network (RCN)

Carbon-Land Model Intercomparison Project (C-LAMP) ⁶

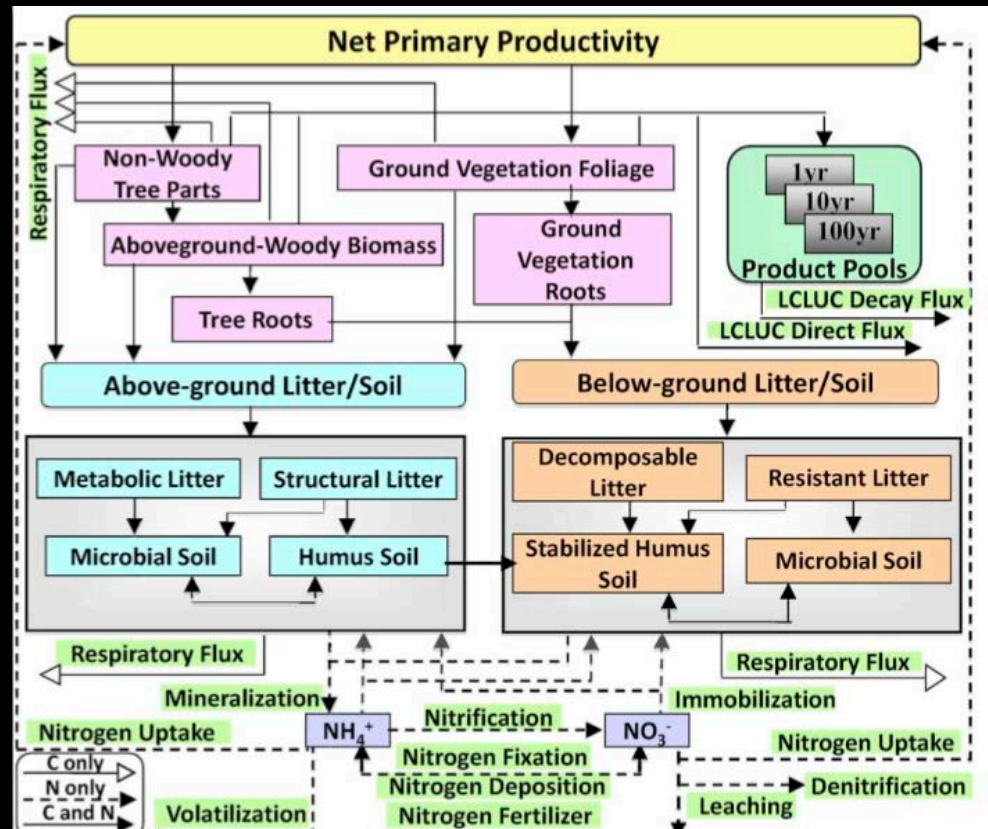
Missing Gaps in Modeling Studies (cont.)

- *Formulations/parameters:* How should models represent relationships between outputs and driving variables as well as the parameters in those relationships
 - Biogeochemistry: C-N interactions, decomp relationships, rate-limiting parameters of decomp, temperature sensitivity parameters, etc.
 - Biogeophysics: Snow hydrological (wind compaction, depth hoar formation) and energy processes etc.

ISAM Land-Surface Model



Carbon and Nitrogen Cycling



Calculate fluxes of carbon, nitrogen, energy, water, and the dynamical processes that alter these fluxes

- 18 Biome types
- 0.5 x 0.5 degree resolution
- 30 minutes temporal scale
- Season-to-interannual variability (phenology)

Jain and Yang (2005, GBC)

Jain et al. (2005, GRL)

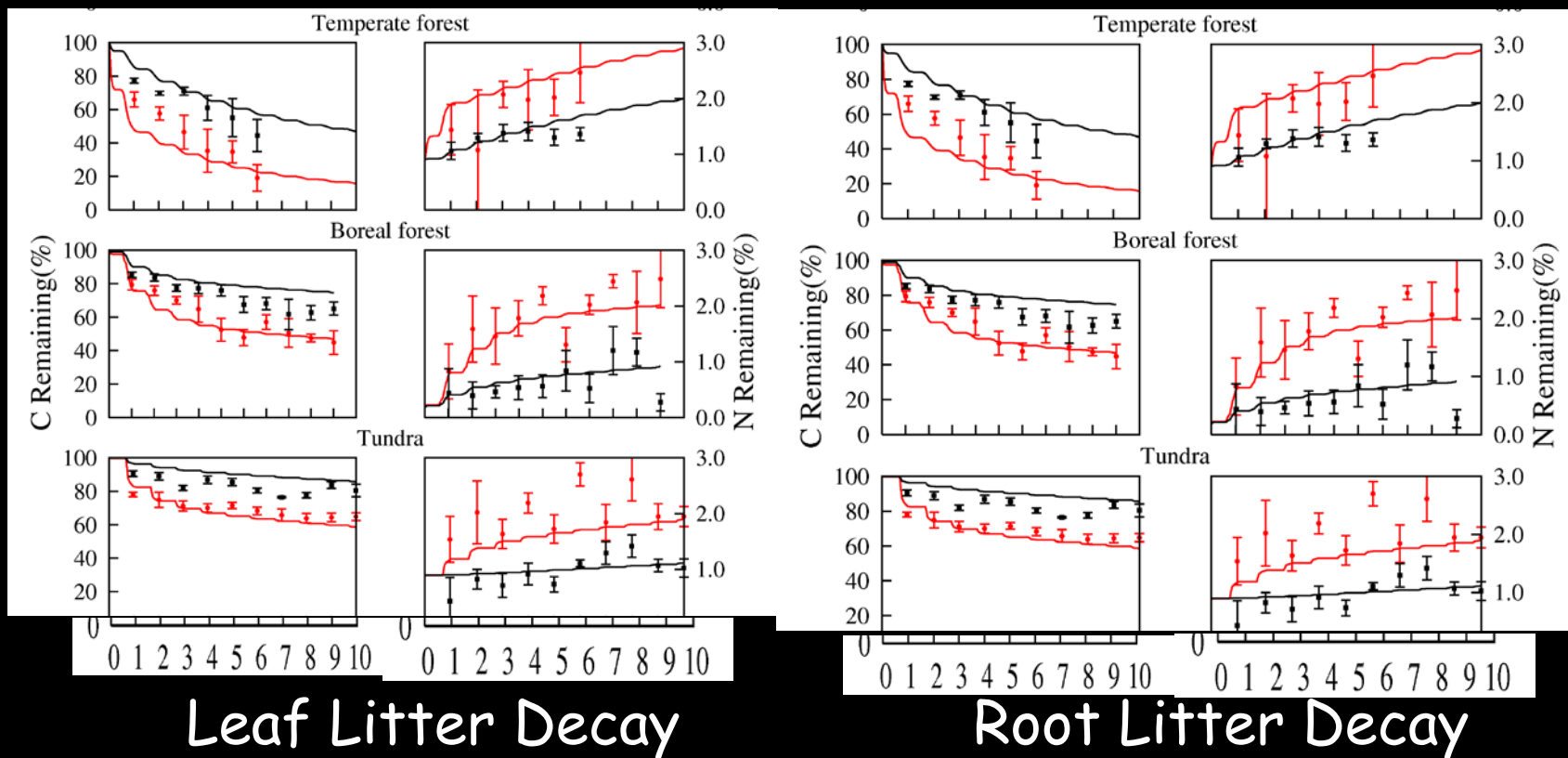
Jain et al. (2006, JGR)

Jain et al. (2009, GBC)

Yang et al (2009, GBC)

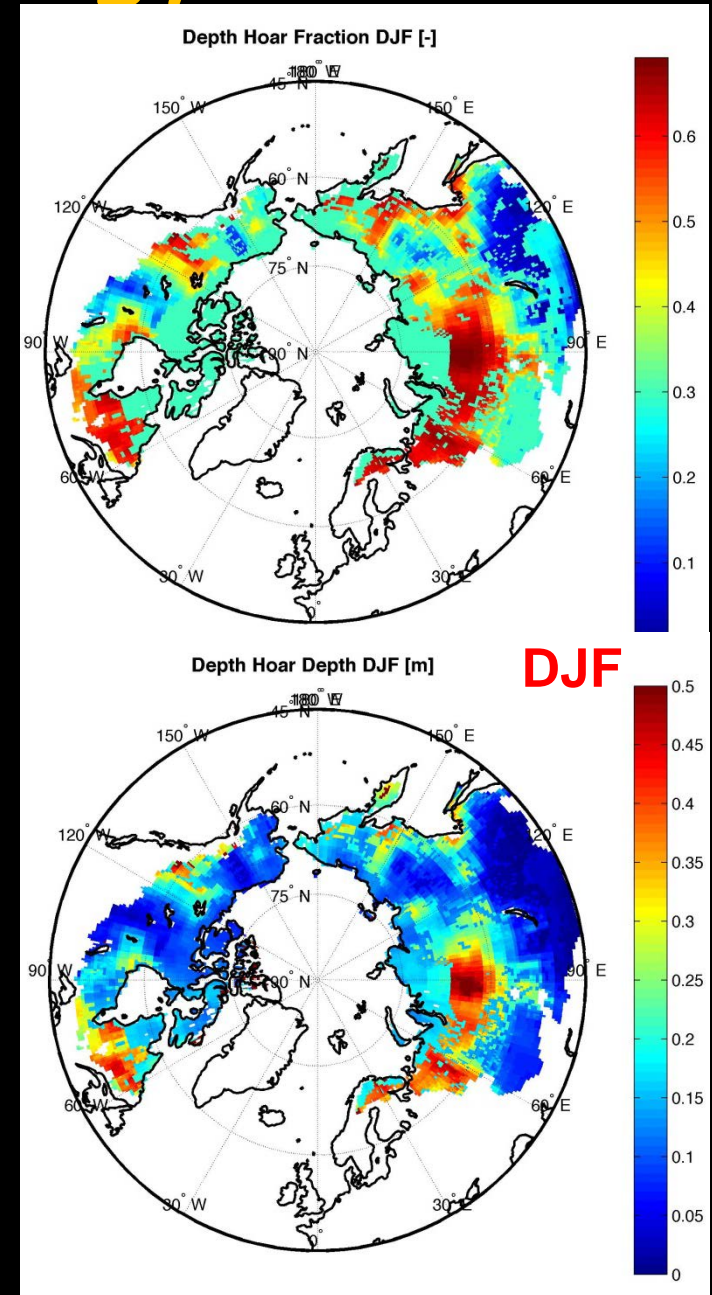
Yang et al. (2010, Biogeoscience)

Evaluation of N-C cycle - Below and Above Ground N and C Masses

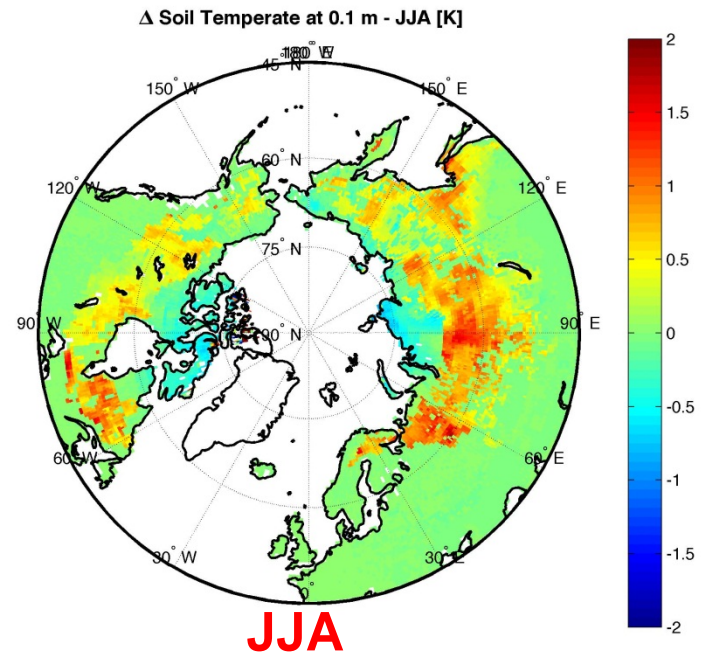
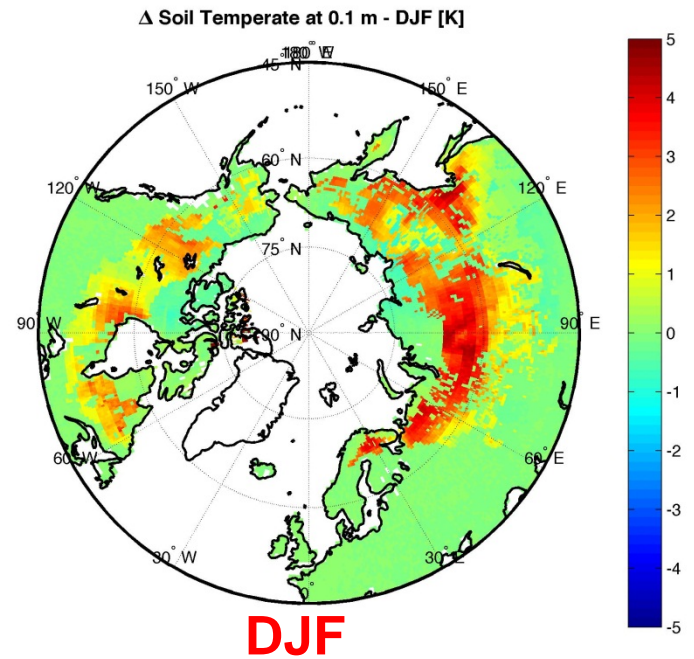


Snow Hydrology

- Soil crystals (or Depth Hoar, DH)
 - formation depends on snow cover type (Stern et al., 1995)
 - has low thermal conductivity
- Implementation of DH fraction and depth in ISAM

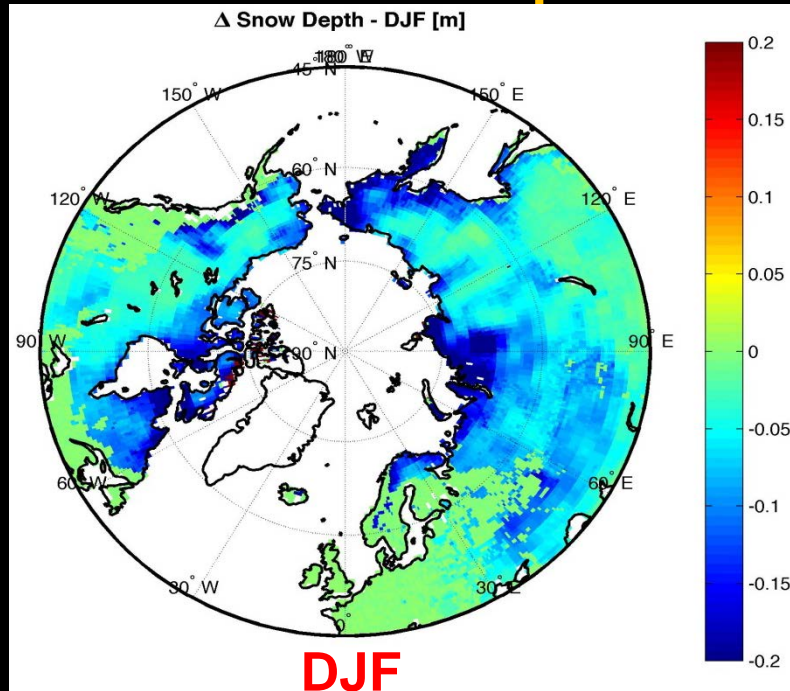


Depth Hoar Effect of Soil Temperature



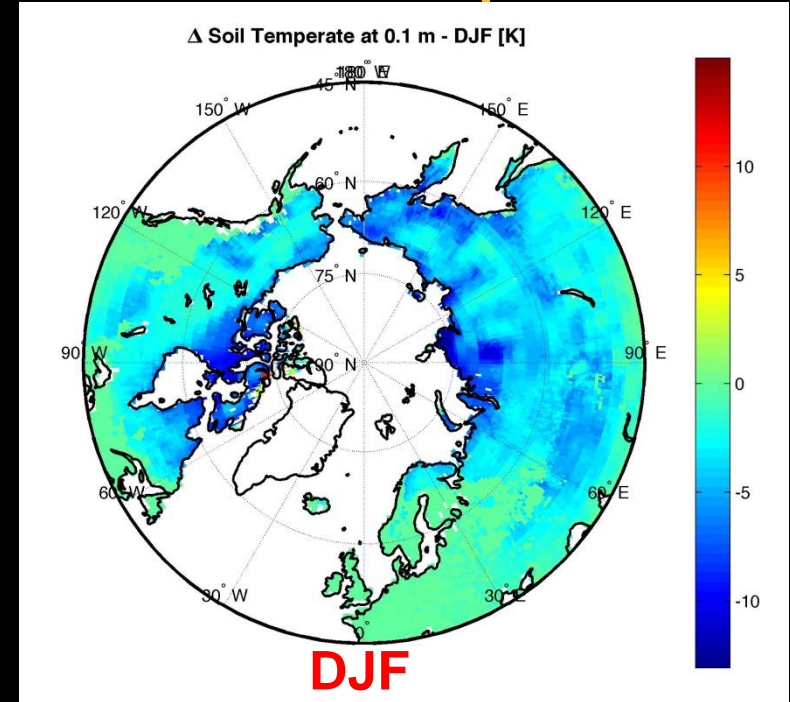
ISAM Estimated Wind Compaction Effect

on Snow Depth



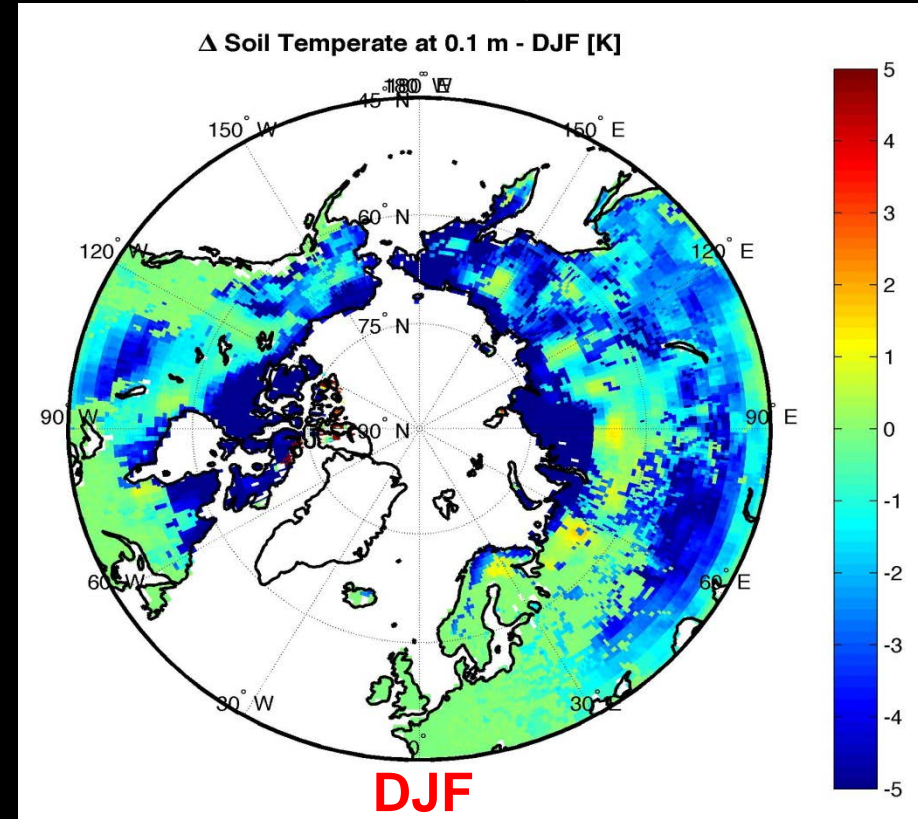
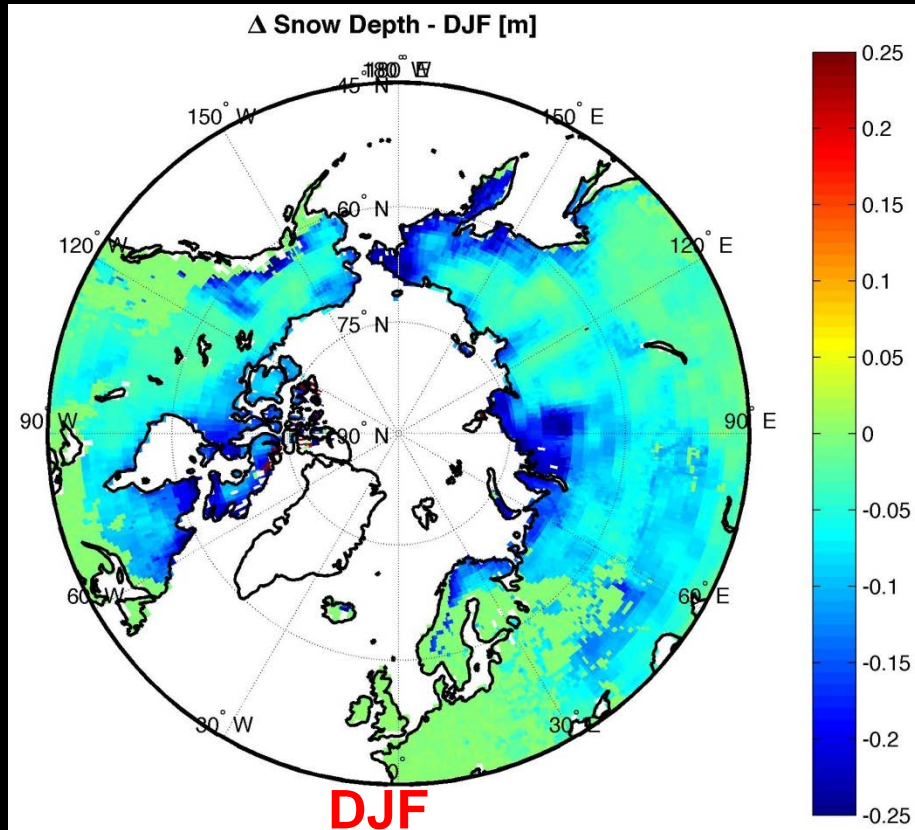
Significant decrease of
Snow Depth in Tundra
snow class

on Soil Temperature



Cooler Soil Temperatures
due to more efficient
heat flow out of the soil
in Winter.

ISAM Estimated Combined Effect (Wind Compaction & Depth Hoar) on Snow Depth on Soil Temperature



Net significant cooling in the Tundra snow class; Net warming in the Taiga snow class

Permafrost Extent & Active Layer Depth

Near-Surface Permafrost Extent and Active Layer Thickness 1970–1990

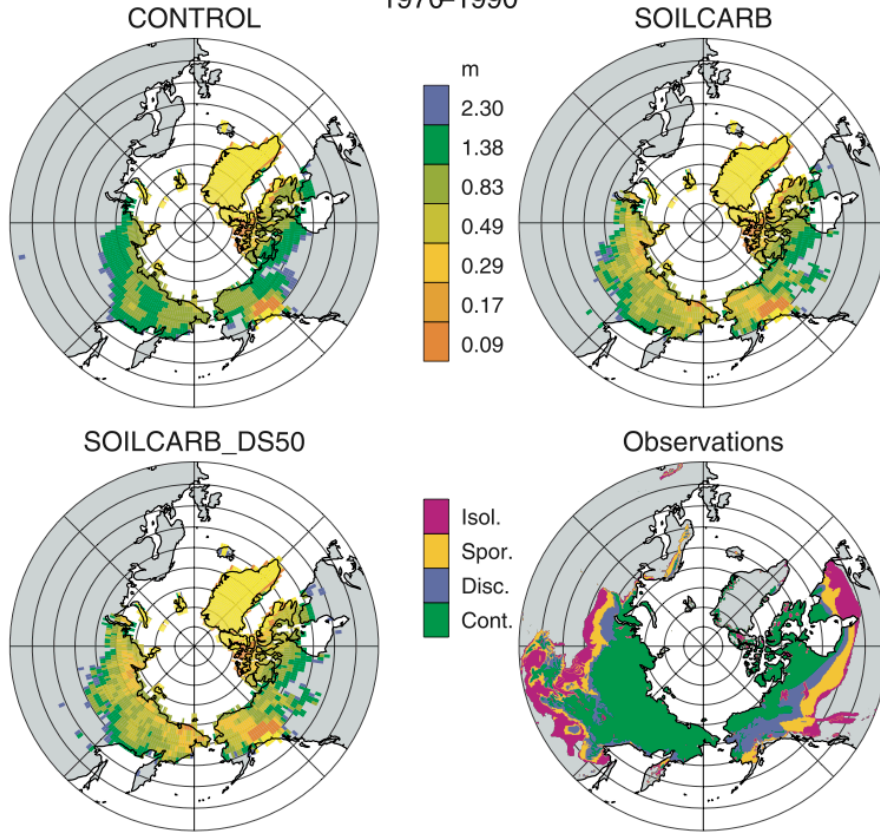
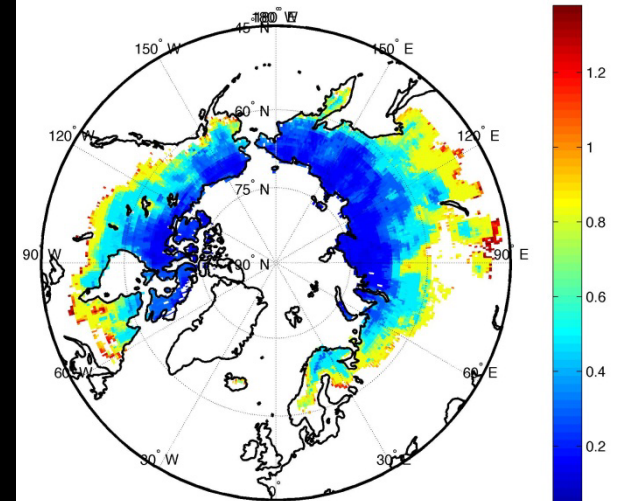


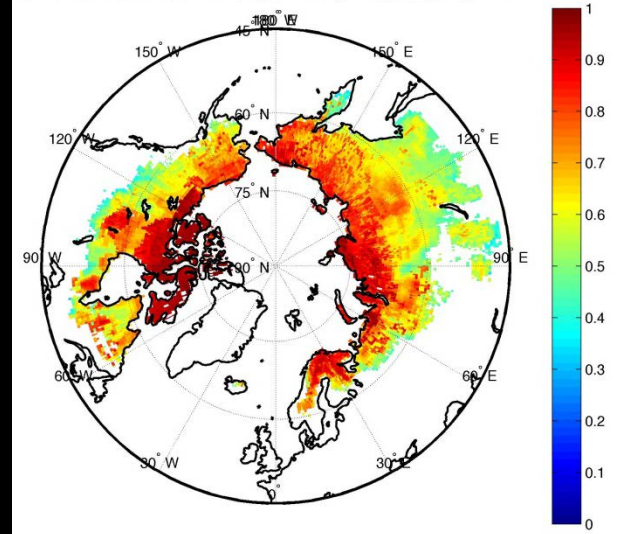
Figure 3. Modeled near-surface permafrost extent and ALT for off-line experiments CONTROL, SOILCARB, and SOILCARB_DS50 averaged over the period 1970–1990. Yellow denotes area where the dominant land unit in the CLM surface data set is glacier. Also shown are observed estimates of permafrost extent (continuous, discontinuous, sporadic, and isolated).

Source: Lawrence et al., 2008, JGR

Active Layer Depth [m] for Permafrost Extent



Permafrost Zone - Ice Fraction [0-1m soil] - DS_SOC_DH_WIND



ISAM Estimates

Permafrost Extent & Active Layer Depth

Near-Surface Permafrost Extent and Active Layer Thickness 1970-1990

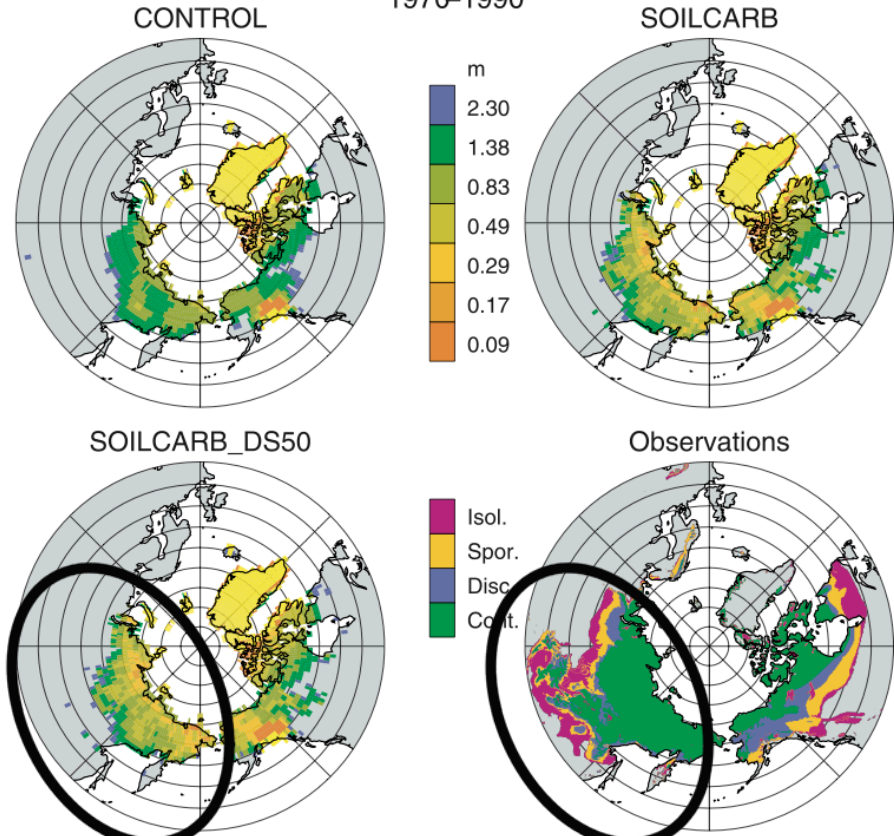
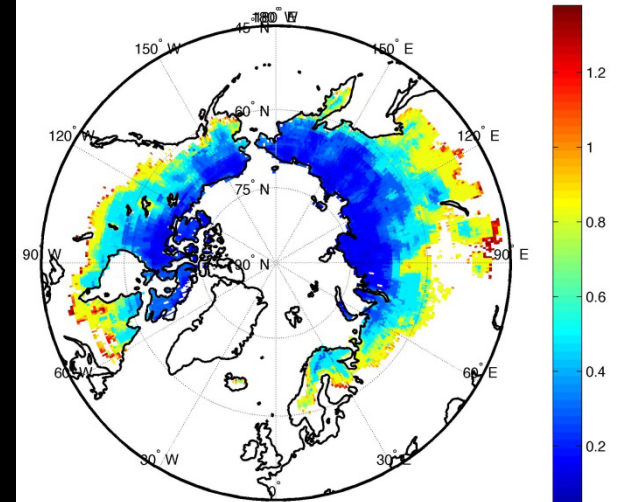


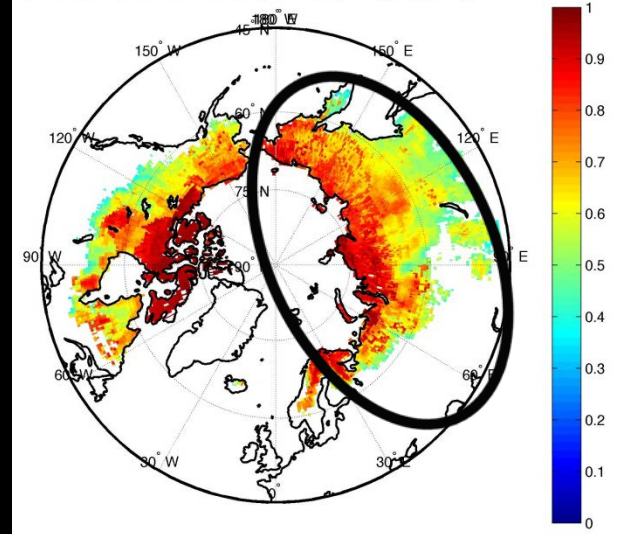
Figure 3. Modeled near-surface permafrost extent and ALT for off-line experiments CONTROL, SOILCARB, and SOILCARB_DS50 averaged over the period 1970-1990. Yellow denotes area where the dominant land unit in the CLM surface data set is glacier. Also shown are observed estimates of permafrost extent (continuous, discontinuous, sporadic, and isolated).

Source: Lawrence et al., 2008, JGR

Active Layer Depth [m] for Permafrost Extent

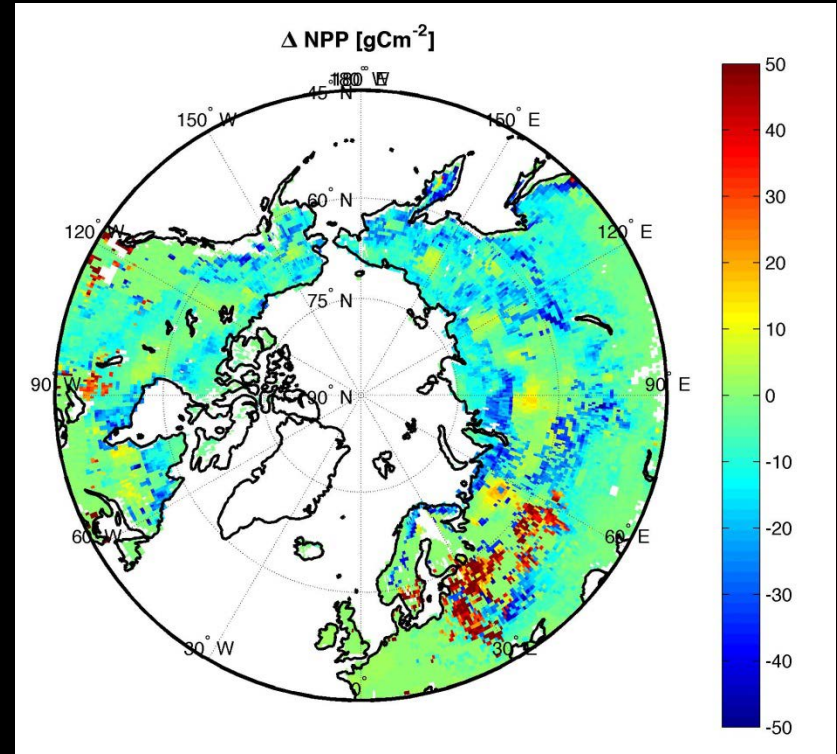
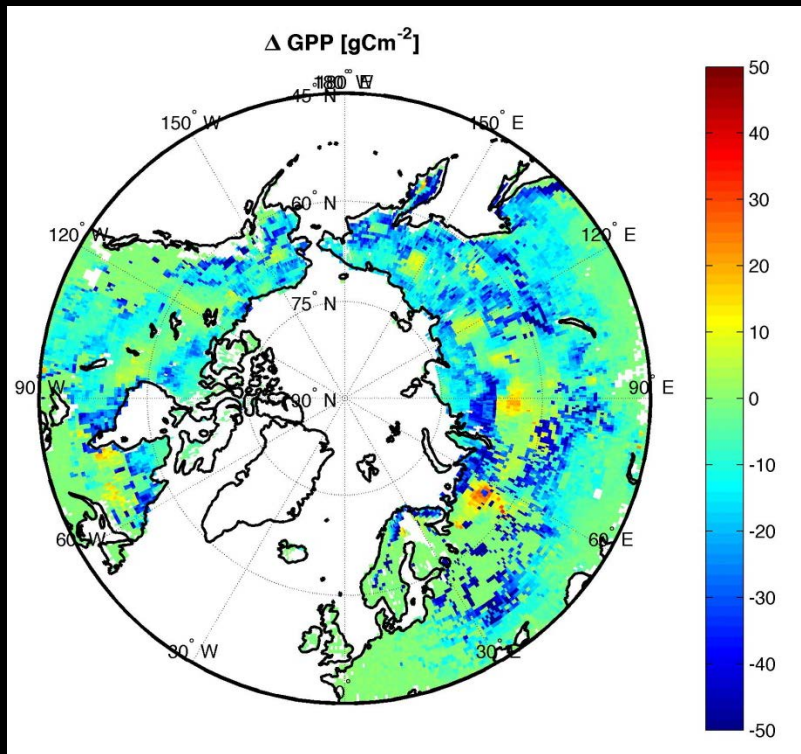


Permafrost Zone - Ice Fraction [0-1m soil] - DS_SOC_DH_WIND



ISAM Estimates

Effect on Biogeochemistry - Change in Annual GPP, NPP



Model results suggest temperature driven response in annual GPP & NPP

ISAM CURRENT EFFORTS:

Coupling of Land Model with Climate

CSEM Model

- Atmosphere
- Ocean
- Sea-ice
- Other components



CLM



ISAM Land

- Biogeochemistry
- Permafrost
- Biogeophysics

Objectives:

- Compare the performance of CESM-ISAM with the CESM-CLM and to identify areas of major disagreements, and
- Gain a better understanding of the impact of alternative representations of ISAM formulations in climate feedbacks.

Collaborators:

- Mariana Vertenstein (NCAR)
- Forrest Hoffman (ORNL)
- Robert Jacob (ANL)

Research Plan - Short Term Goals

- Evaluate the performance of ISAM-CESM modeling framework
 - Use the Carbon-Land Model intercomparison Project (C-LAMP) as a diagnostic framework to compare results with data and other models.
- Perform coupled ISAM-CESM modeling experiments to evaluate key climate-carbon interactions and feedbacks
 - Study the magnitude and dynamics of the permafrost and terrestrial carbon cycle feedback.

Research Plan - Long Term Goals

- Couple the permafrost models to models of ecosystem structure and function to study:
 - vertical distribution of soil temperature and C & N with time.
 - landscape-level effects of thaw:
 - Surface Subsidence (thermokarst)
 - Cryoturbation
 - Wetland expansion/contraction
 - the effects of disturbance (like fire) on ecosystem structure.

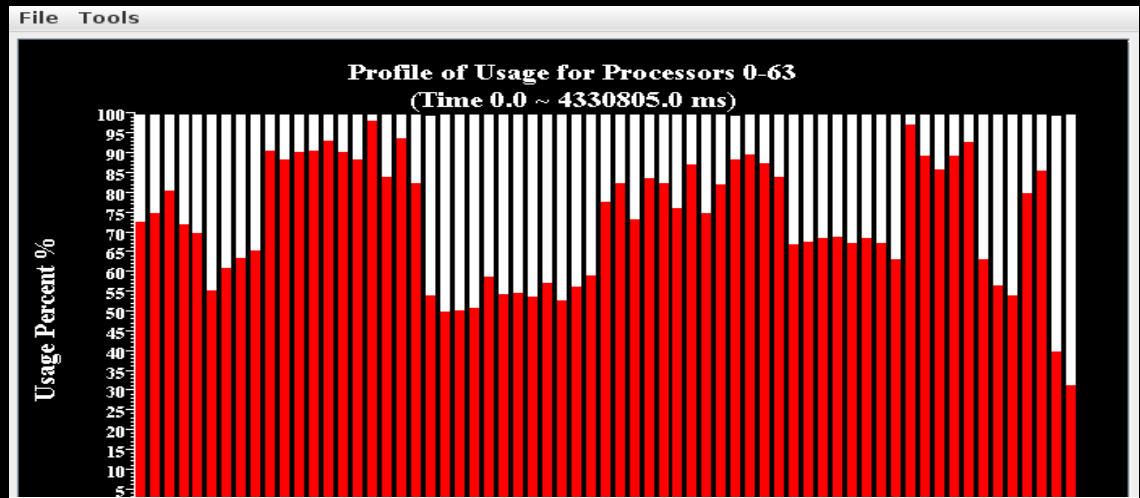
Applying novel load-balancing mechanisms to the ISAM to achieve dynamic and improved modeling scalability

Background:

Current Imbalance in ISAM

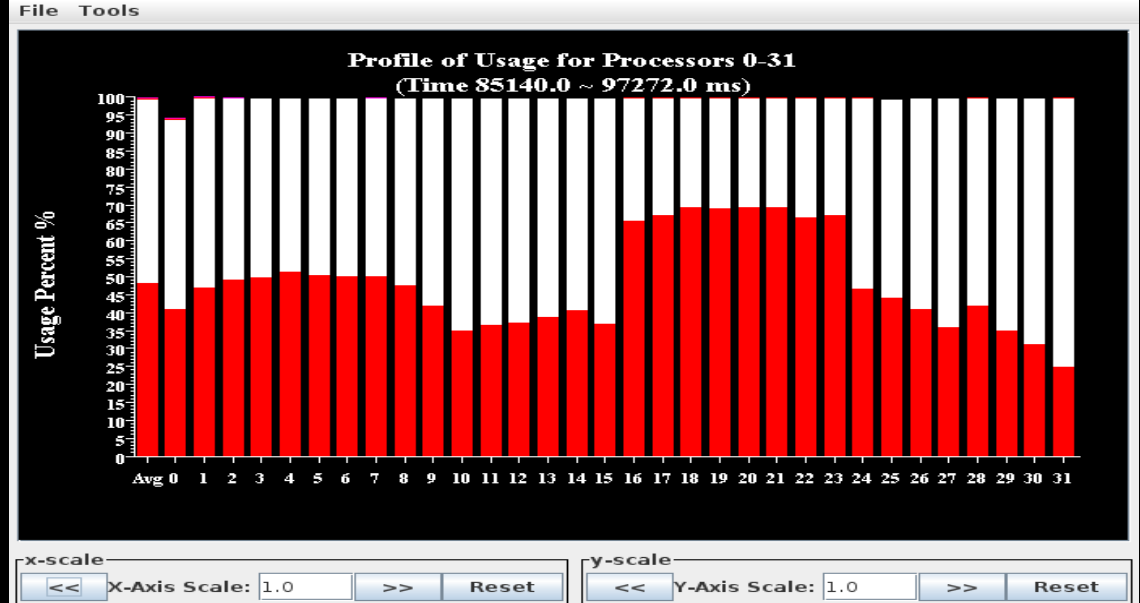
Biogeophysics

Component:
MPI, P=64,
10-year
simulation



Biogeochemistry

Component:
MPI, P=32,
4-year simulation



Near and Long Term Project Goals

➤ Near Term Goals

- Use advanced load balancing algorithms using Charm++/Adaptive-MPI (AMPI) systems -to balance the load of ISAM when running standalone
 - AMPI employs migratable objects, enabling dynamic load balancing and enhanced scalability

➤ Long Term Goals

- Use AMPI to balance the load of coupled ISAM+CESM
 - This may require development of new load balancers, tuned to CESM's characteristics

The End

Extra Slides

AMPI: Motivation

- **Challenges**

- New generation parallel applications are:
 - Dynamically varying: load shifting during execution
 - Adaptively refined
 - Composed of multi-physics modules

- **Typical MPI Implementations:**

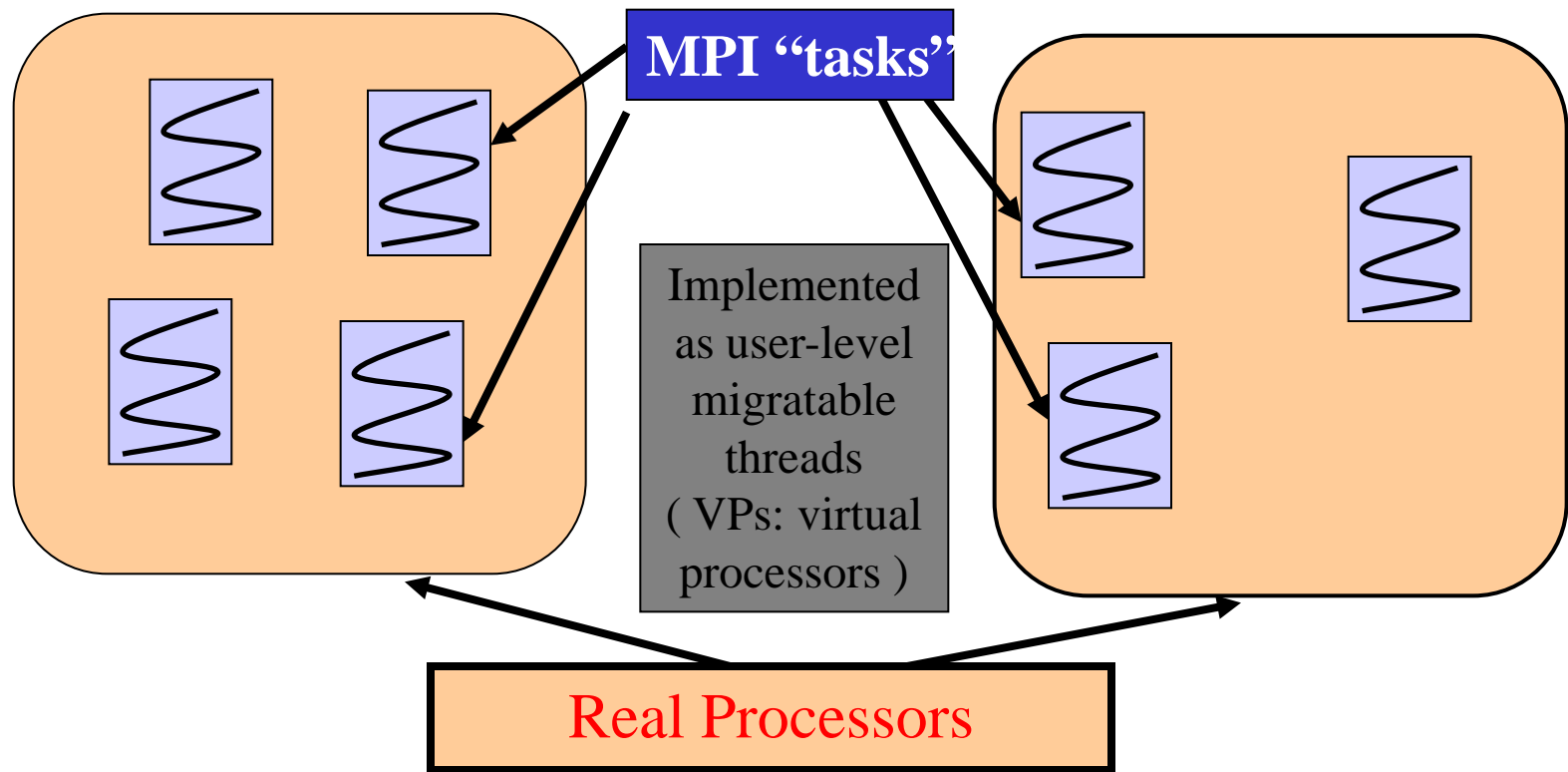
- Not naturally suitable for dynamic applications
- Available processor set may not match algorithm

- **Alternative: Adaptive MPI (AMPI)**

- MPI & Charm++ virtualization: VP (“Virtual Processors”)

AMPI: Overview

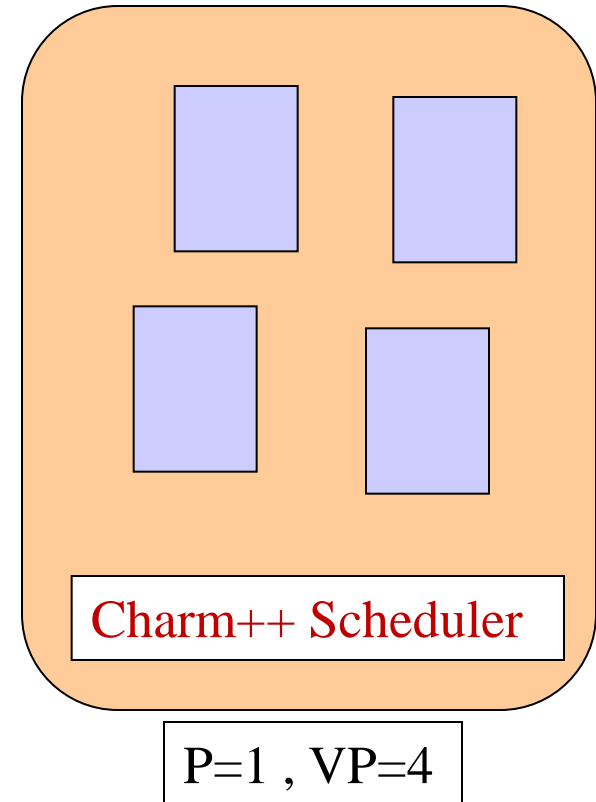
- **Virtualization:** MPI ranks \rightarrow Charm++ threads



AMPI: Overview (cont.)

- **AMPI Execution Model:**

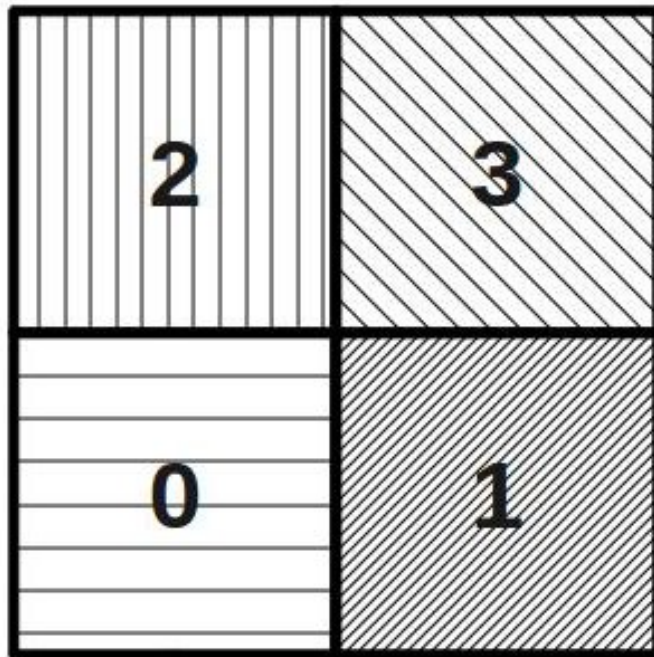
- Multiple user-level threads per process
- Typically, one process per physical processor
- Charm++ Scheduler coordinates execution
- Threads (VPs) can migrate across processors
- Virtualization ratio:
 $R = \#VP / \#P$
(over-decomposition)



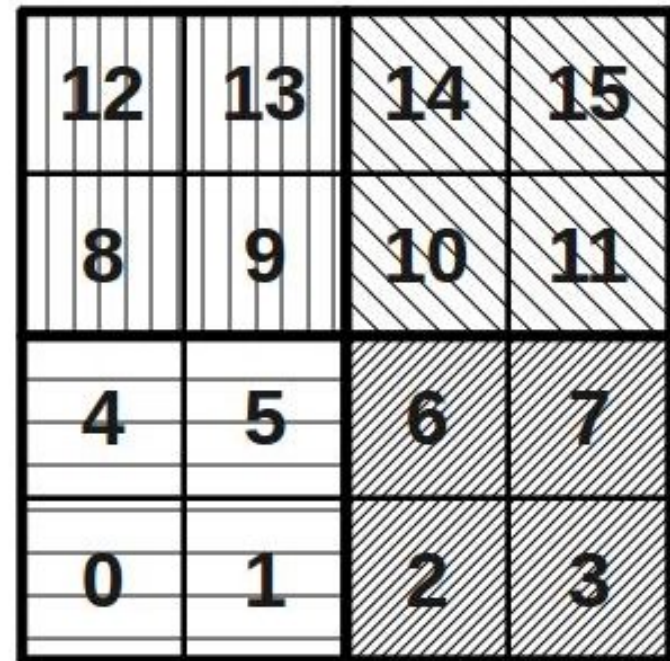
AMPI: Overview (cont.)

- AMPI's Over-Decomposition in Practice

MPI: $P=4$, ranks=4

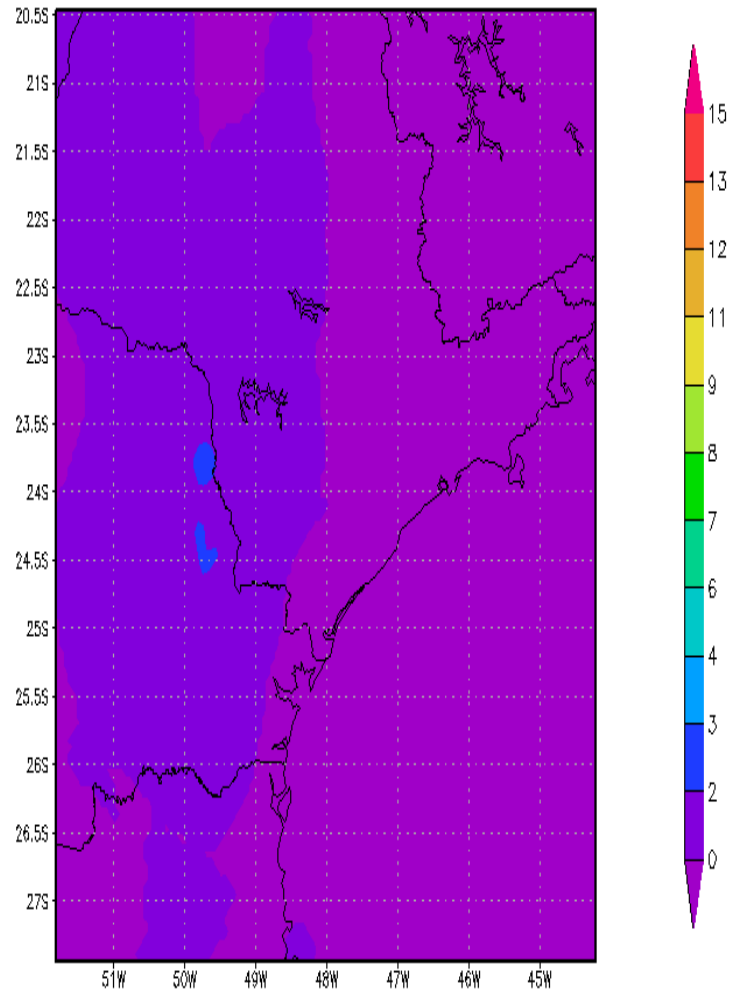


AMPI: $P=4$, VP=ranks=16



Load Imbalance Example

BRAMS Forecast

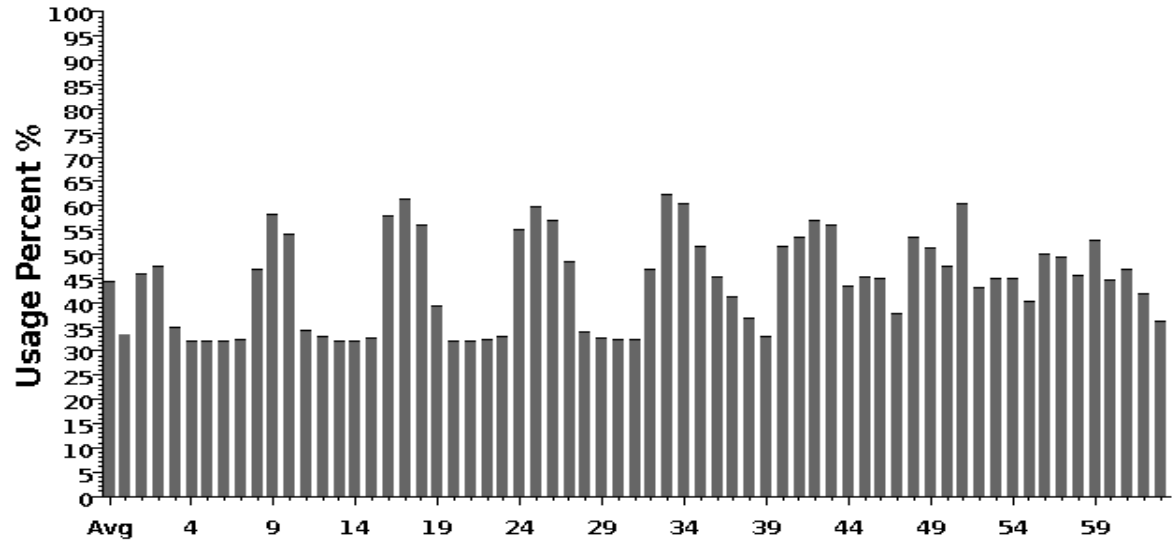


Processor Loads (MPI)



Processor Utilizations in BRAMS

Original (MPI)



After AMPI
Load Balancing

