

Submit your Mashup

The USGS has heard from many users and developers that they would like to showcase their efforts and learn more about using *The National Map* services, viewers, and data.

At the 2011 *the National Map* Users Conference in Denver May 12-13, a Mashathon session will be held for developers and users to showcase their "mashup" using *The National Map*.

How the Mashathon will work

You do not need to attend *The National Map* Users Conference to participate or win. Place your submission on <http://ngp.ideascale.com> following the instructions in this handout.

This is a great networking opportunity for sharing ideas within the geospatial communities. You also can vote and comment on other submissions.

What is a Mashup?

A data mashup is something built using multiple data sources and can be in any form: a map, a viewer, an application, a mobile tool – you name it. It does not need to be a fully completed live application; it can be a prototype, beta, alphas- any state of *The National Map* in use.

Submit any mashup, tool or solution using *The National Map*: In Map Viewers, using the data, making poster, in social media, mobile app or link to your catalog.

Submission Categories

Categories for this Mashathon are:

- Earth Science Apps and Maps
- Federal Government Planning and Management
- Local, Tribal, Project Case Study
- Innovative Technology – Any use in a unique or different tool, Client, Map, or Mobile application

A submission in any of these categories can be any Map, Application, Tool, Mashup, Viewer, etc. that uses *The National Map* or National Atlas® data, services or tools in a user story about one of these categories. When submitting make sure to indicate the category.

Submission Rules

- Submission must include and cite:
- *The National Map* or National Atlas® in use in a short abstract - mashups NOT using such will not be considered.
 - Credit yourself and the organization you represent. Credit other data sources used in your mashup, application, site, service
 - Summarize who uses it or is intended for and what problem it is solving
 - Abstract should NOT EXCEED 80 words

Submissions need to include a publicly accessible URL/link to the site or application. If this is not possible, provide a demo in the form of presentation slides, PDF, poster, or YouTube video. Also, do such if the mashup requires plug-ins or installation.

Submission Voting

Anyone who logs into the IdeaScale site can vote. This includes conference attendees, USGS GIS Workshop attendees, or anyone that stumbles upon the site. This means people not attending the conference can submit and/or vote.

Winning Submission

Anyone submitting a mashup is automatically, win or not, seen by others on the submission site. Winners will be cited on *The National Map* publications and highlighted. Further information will be provided about the winning submissions at the conference.

Getting Started

All ideas for consideration must be put on the <http://ngp.ideascale.com> site no later than Noon, MDT, May 12. Early submission is encouraged as voting starts immediately.

NOTE: Logging into the ngp.ideascale.com site is required. A facebook, twitter, google, OpenID, etc. can be used rather than creating an IdeaScale account if desired.

Any submissions deemed in violation of laws will be removed immediately.

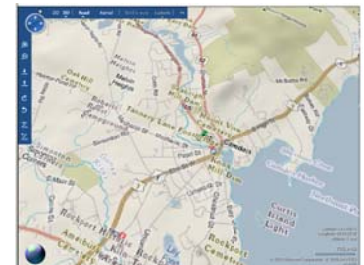


Figure 1,2,3. (left to right) A mashathon submission can be a shortcut link to *The National Map* Viewer showcasing a mashup, interesting solutions using any *The National Map* product such as any data or the US Topo, or using *The National Map* services or data in any tool.