



## SITE OT-16A

### Shaw Air Force Base, S.C.

One of the four, off-base, active cleanup sites here is OT-16A, located on the west side of the base. Approximately 30 feet below ground in the shallow Lang Syne Aquifer, it was discovered in 1995 and contains a dieldrin plume.

#### BACKGROUND

**Dieldrin:** From the 1950s until the 1970s, farmers in South Carolina commonly used dieldrin as a pesticide on crops including corn and cotton. The Environmental Protection Agency banned dieldrin use in 1974, except to control termites, because of concerns about damage to the environment and potentially to humans. In 1987, EPA banned all use. There are no federal drinking water standards for dieldrin.

The Air Force never used dieldrin here. It purchased the property in the 1950s and built a vehicle maintenance area on the site in 1954. Before its Air Force use, the land was private cotton fields. The Air Force believes the dieldrin at the site is from the old agricultural use.

#### CLEANUP

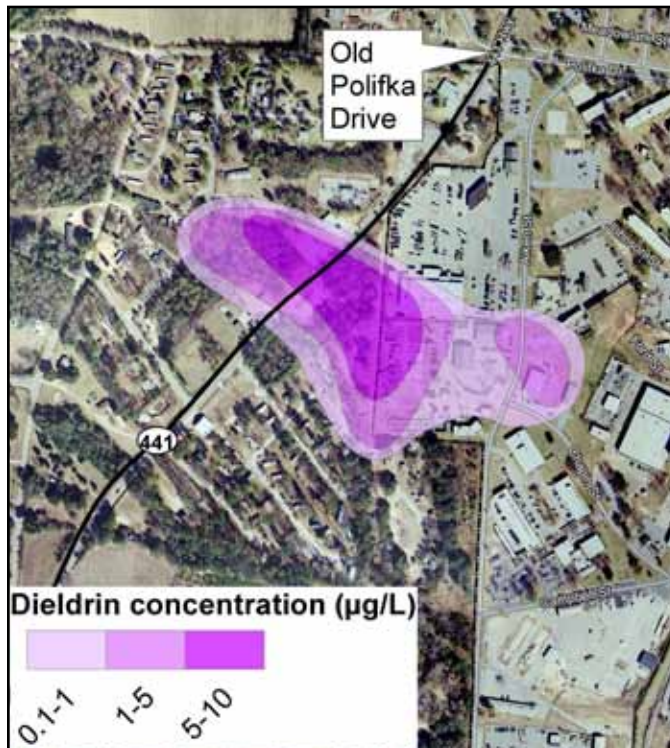
Even though your Air Force did not create the dieldrin problem, it is committed to cleaning up the soil and groundwater. So, in cooperation with the South Carolina Department of Health and Environmental Control, in January 2002, the Air Force removed 161 tons of dieldrin contaminated soil, disposed of the soil at a hazardous waste landfill and refilled the site with 390 tons of clean soil.

Tests have shown that the dieldrin in the groundwater is not moving. There are no exposure pathways to humans through soil or water. Also, the Air Force has monitored the groundwater and has set up some land use controls at the site. Monitoring will continue until at least 2025.

These cleanup efforts require the cooperation and effort of many people and groups. The Air Force, DHEC, environmental contractors and the base's neighbors all work together to successfully protective human health and the environment.

#### SITE OT-16A AT A GLANCE:

- Discovered: 1995
- Contaminant: Dieldrin
- Possible source: Believed to be pesticide use on cotton before 1954
- Location: Shallow "Lang Syne" Aquifer
- Cleanup remedy: Surface soil removed and replaced in 2002
- Status: Plume monitored; no exposure paths



Map depicting the dieldrin plume at site OT-16A at Shaw A.F.B., S.C.



Site OT-16A was a private cotton field prior to being purchased by the Air Force in the 1950s. The Air Force believes that the dieldrin found in groundwater at the site is due to agricultural pesticide used on cotton crops before 1954.

---

## **POINTS OF CONTACT**

### **Mr. Rob Sexton**

Chief, Community Relations  
20<sup>th</sup> Fighter Wing Office of Public Affairs  
345 Cullen Street  
Shaw AFB, SC 29152  
803-895-2019 / robert.sexton@shaw.af.mil

### **Ms. Rachel Poole**

Bureau of Land and Waste Management  
South Carolina Department of Health & Environmental Control  
2600 Bull Street  
Columbia, SC 29201  
803-896-4073 / poolerd@dhec.sc.gov

## **FOR MORE INFORMATION**

U.S. Environmental Protection Agency: [www.epa.gov](http://www.epa.gov)  
South Carolina Department of Health & Environmental Control: [www.scdhec.gov](http://www.scdhec.gov)

