



# Overview

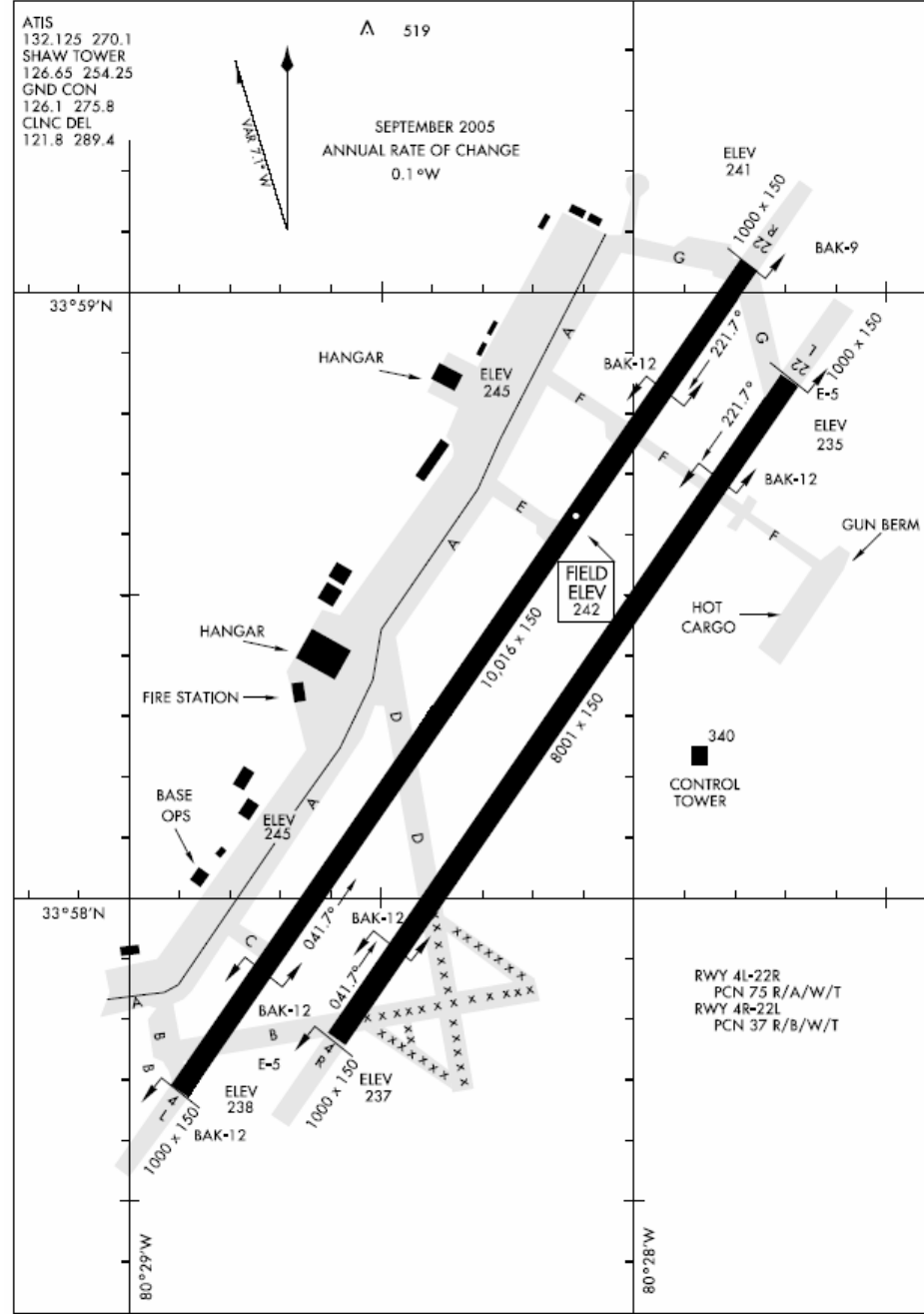


- **Shaw AFB Layout**
- **Airspace**
  - **GAMECOCK/BULLDOG MOAs**
  - **LOCAL RANGES**
- **Emergencies**



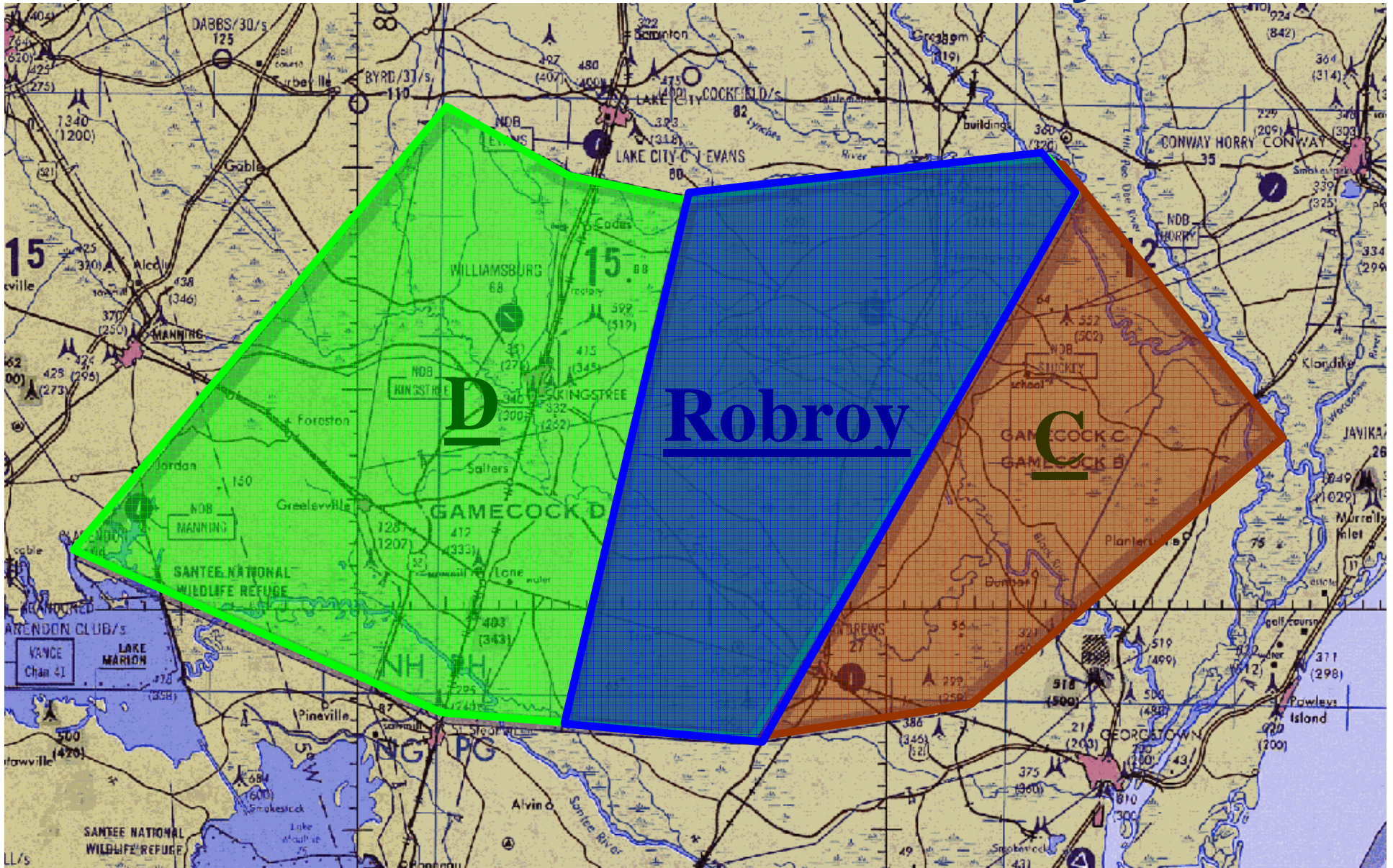
# Airfield Layout

- Parking
- Normal Ops
  - Tower (126.65/254.25)
- Taxi Routes
  - RWY 22
  - RWY 04
- Runway
  - Cable Configuration
- Ground EPs
  - Hot Brakes





# Gamecock C / D / Robroy

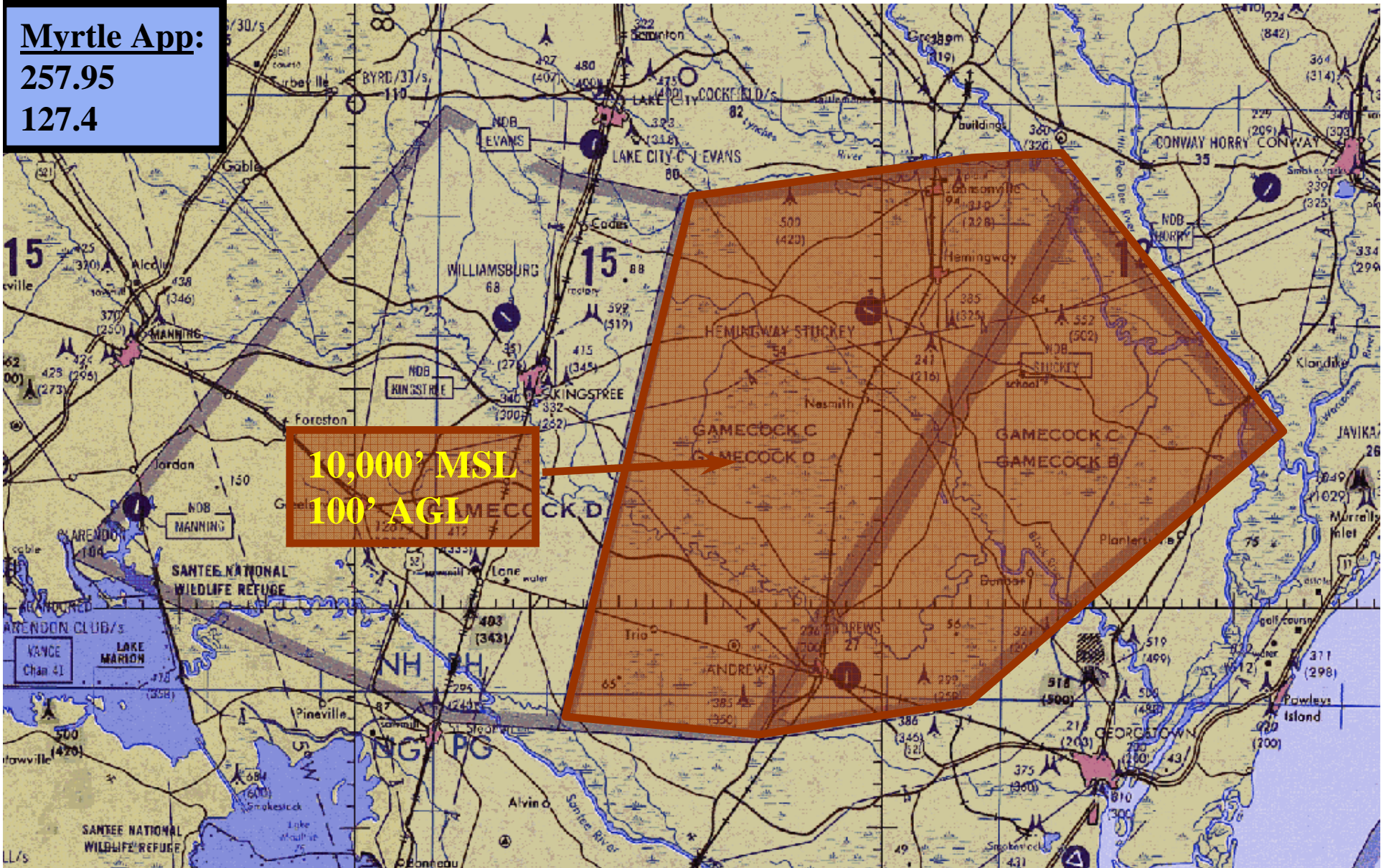




# Gamecock C



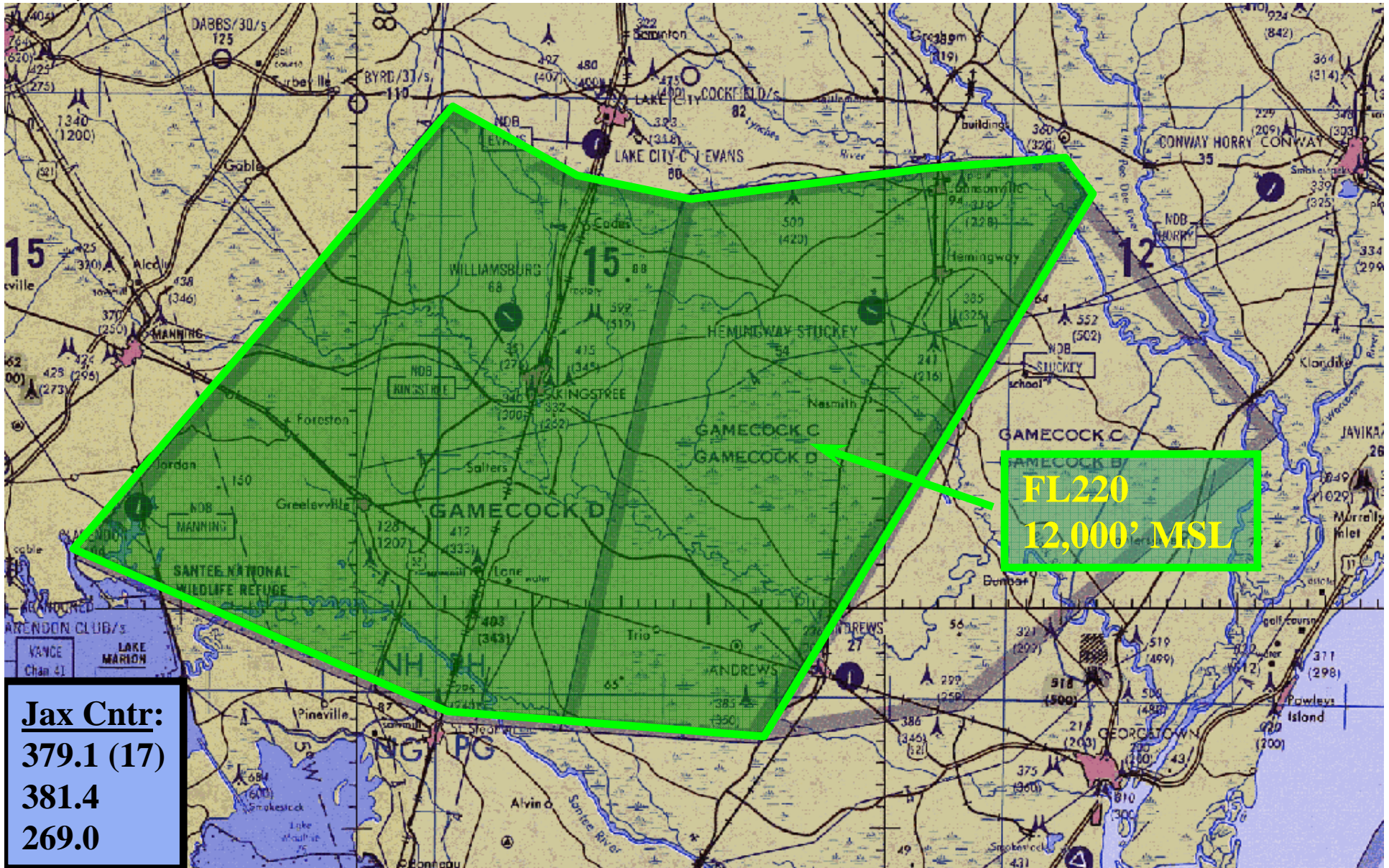
**Myrtle App:**  
**257.95**  
**127.4**



**10,000' MSL**  
**100' AGL**



# Gamecock D



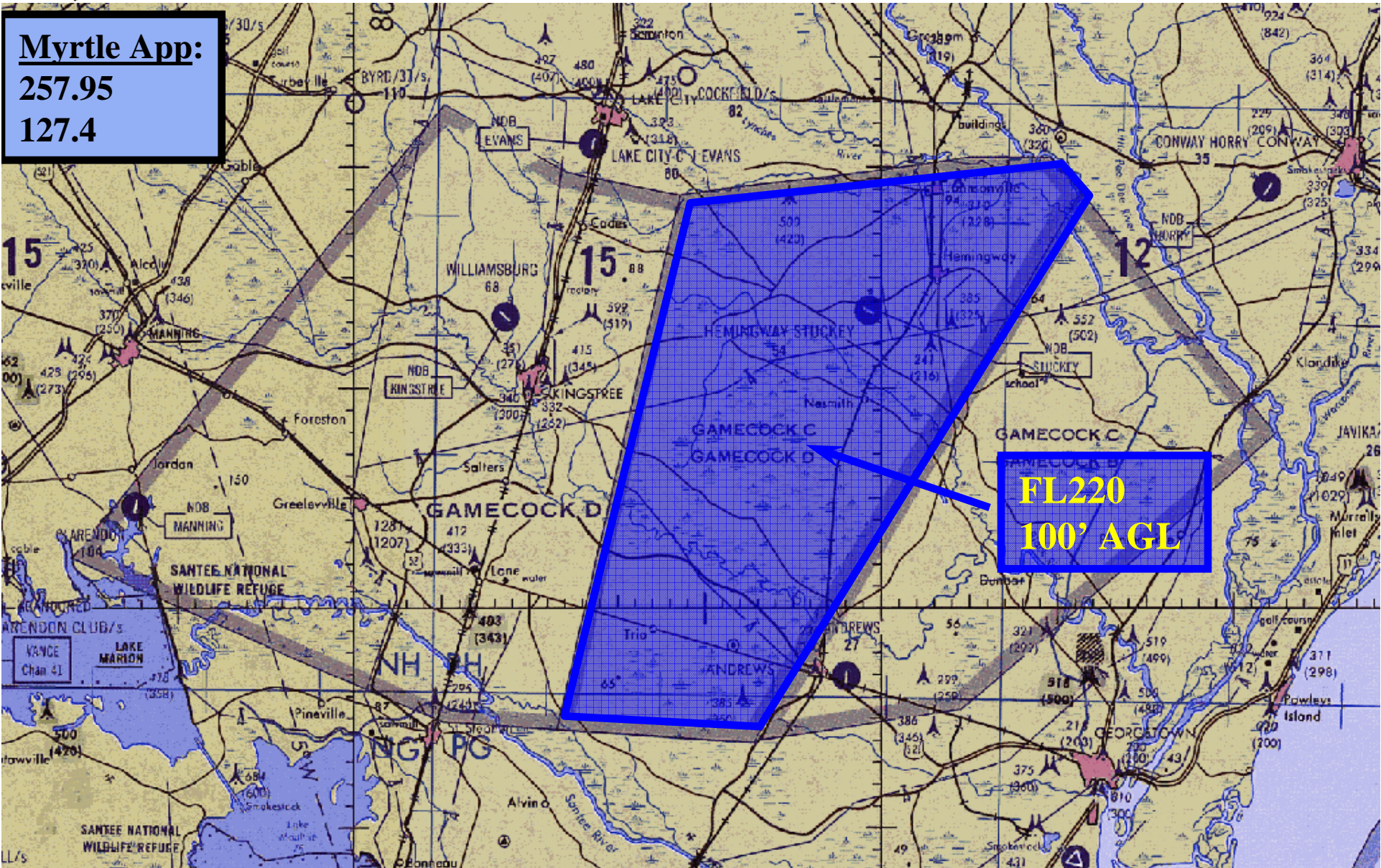
<b>Jax Cntr:</b>
<b>379.1 (17)</b>
<b>381.4</b>
<b>269.0</b>



# Robroy



**Myrtle App:**  
**257.95**  
**127.4**

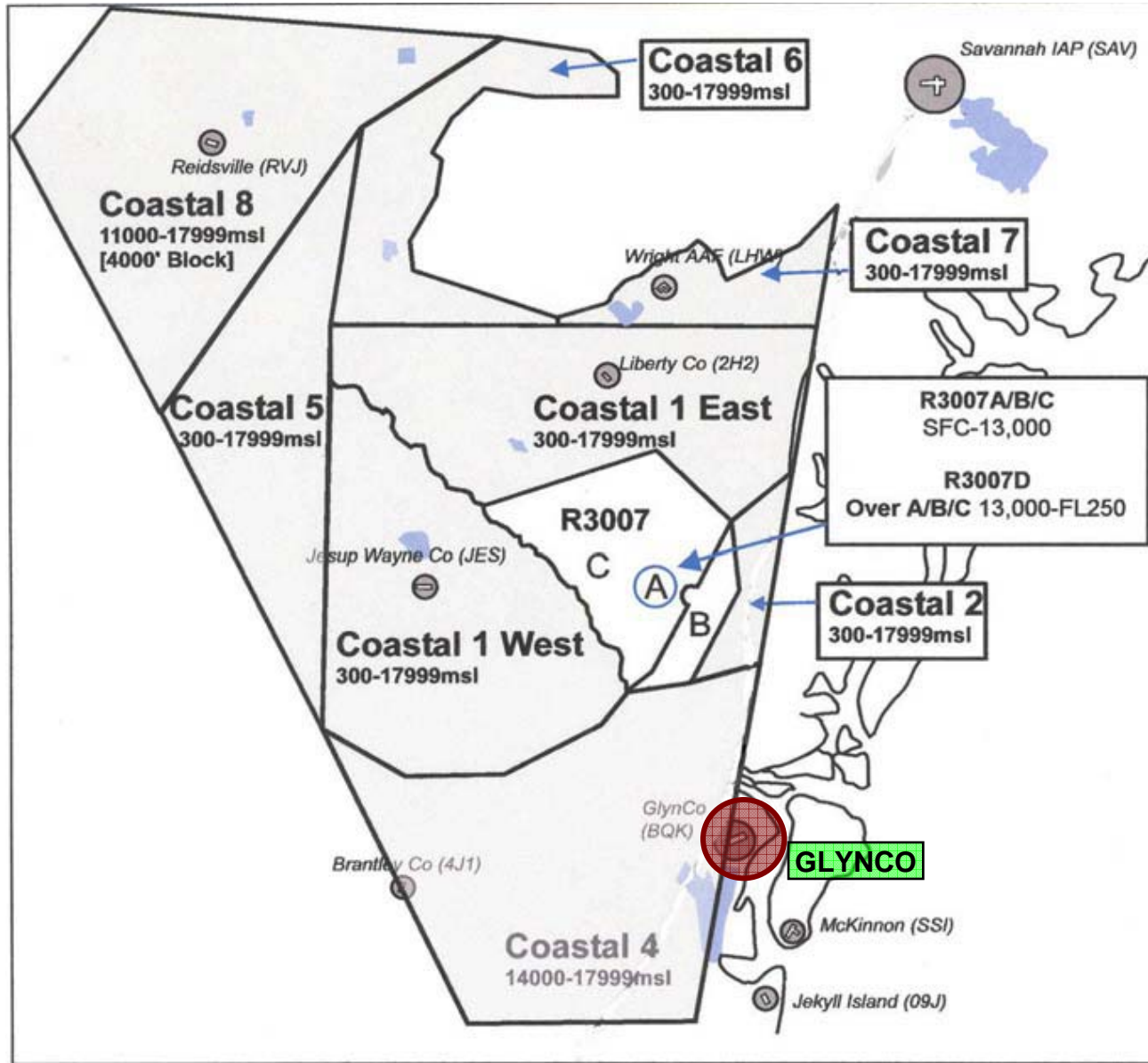


**FL220**  
**100' AGL**





# Coastal MOA/ATCAA Complex



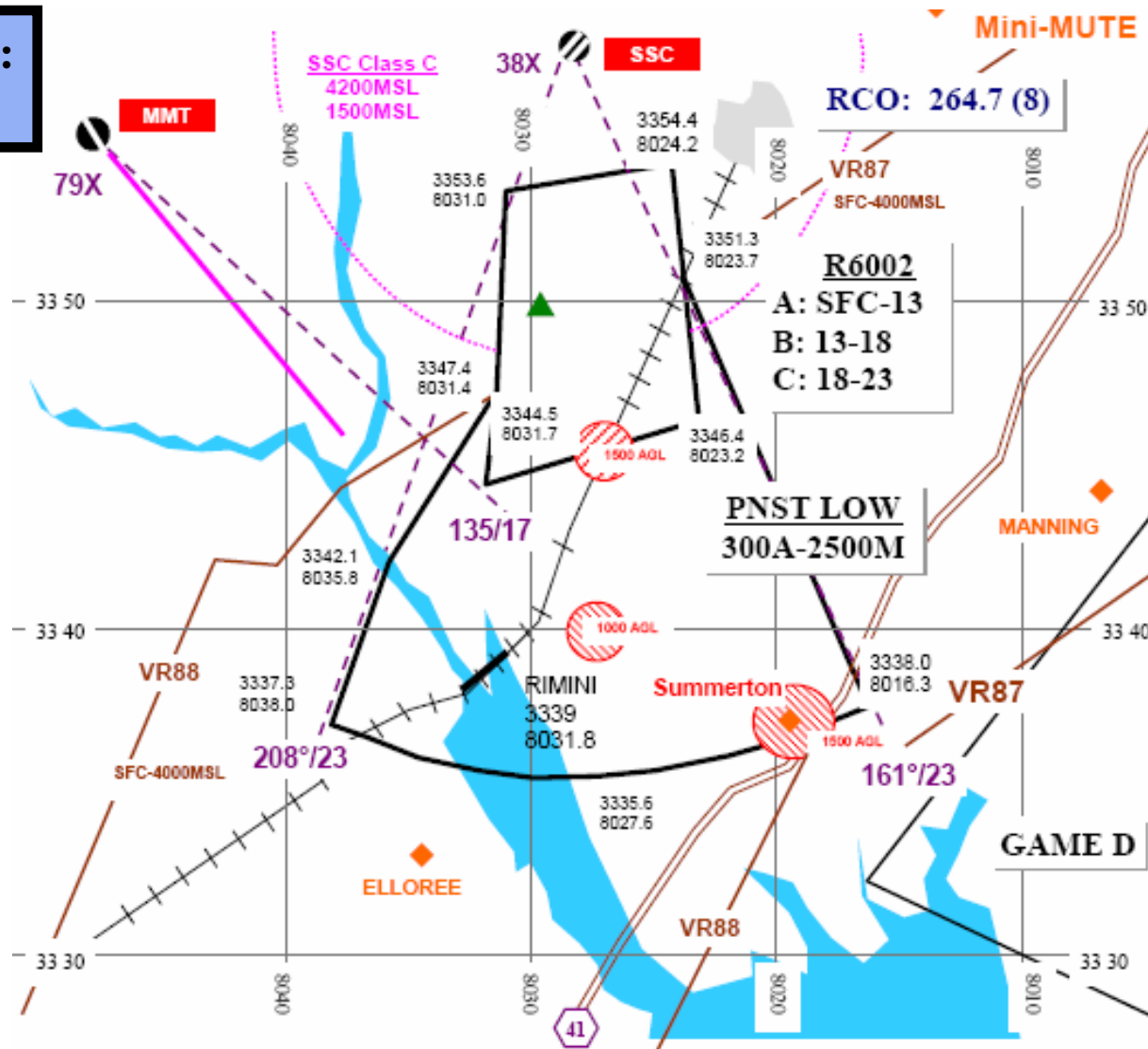




# Poinsett Range

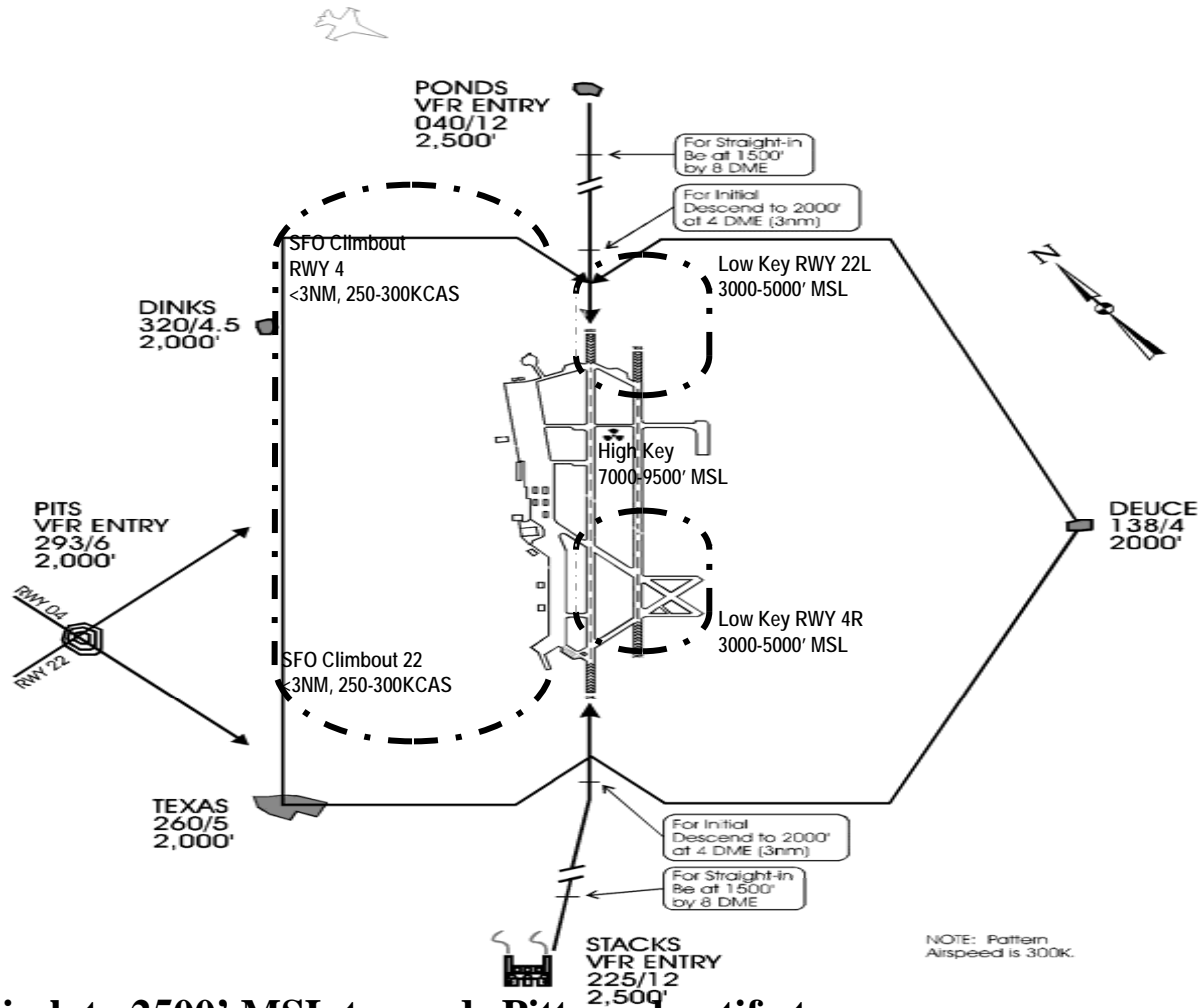


**Shaw Approach:**  
**385.6 / 125.4**





# Shaw VFR Traffic Pattern



**Breakout:** Climb to 2500' MSL towards Pitts and notify tower

**SFO:** Airspace is 9500' and below within 3NM

**Low Closed:** 1,300' MSL normally to full stop, breakouts to radar

**Tac Initial:** FL over asgn RWY, Wg 6000' LAB, 350 KCAS



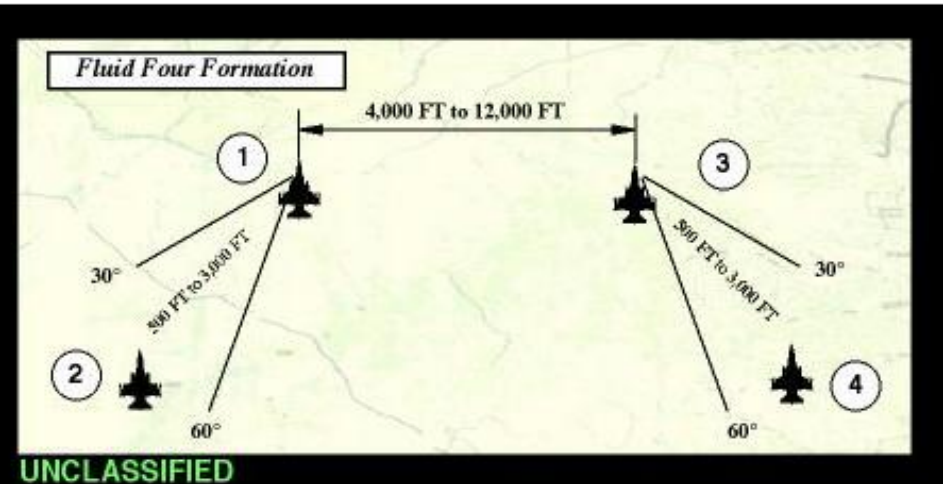
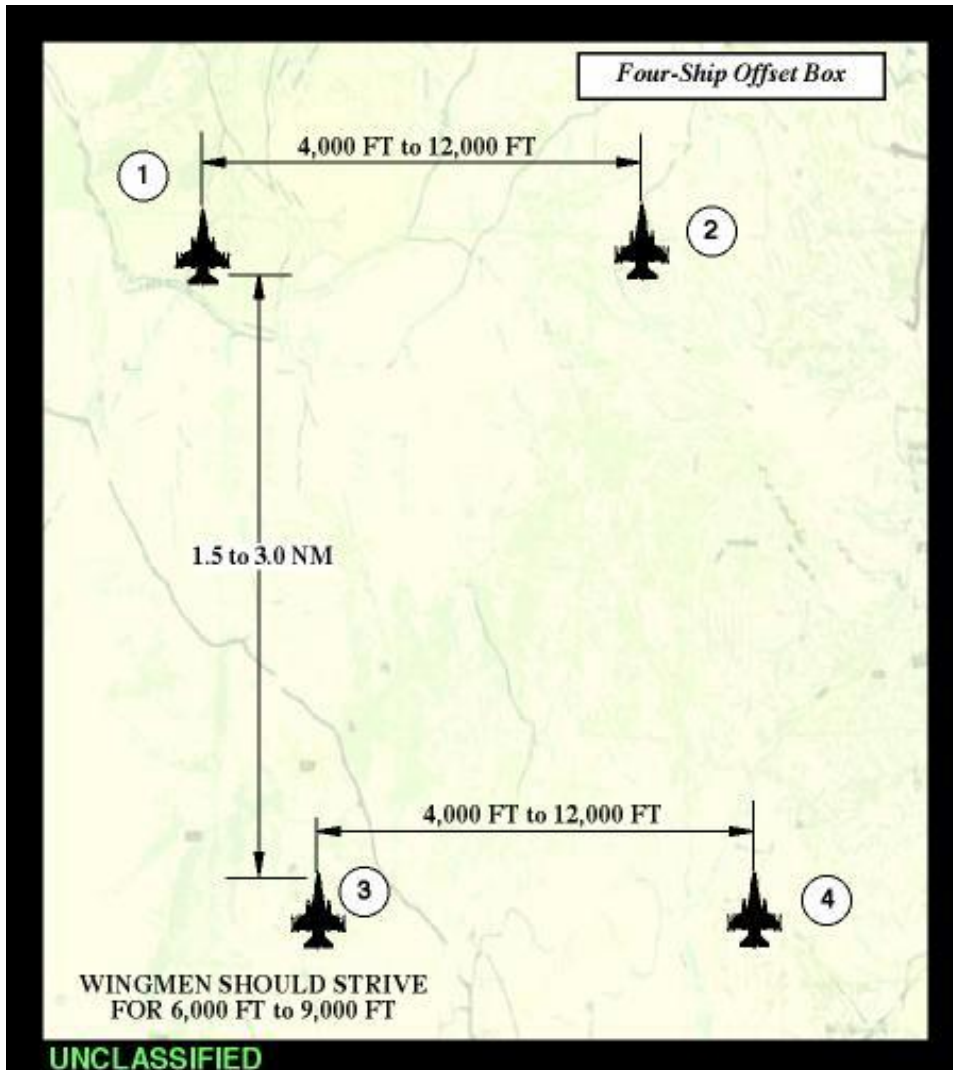
# Emergencies



- **Helpful Agencies**
  - Shaw Tower (126.65/254.25)
  - Jacksonville Center
- **Emergency / Alternate Airfields**
  - **McEntire (9000')**
    - Tower (132.4)
  - **Charleston (9000')**
    - Tower (126.0)
  - **Beaufort (12,000')**
  - **Myrtle Beach (9000')**
  - **Cherry Point (9000')**



# Common Flight Formations





# Rescue Assets



- **Coast Guard Primary (monitoring Guard)**
  - **Charleston**
  - **Beaufort**
  - **Wilmington**
  - **Morehead City**