



Eleventh Air Force

Integrity - Service - Excellence

Alaska Civil/Military Aviation Council

Welcome!

Please Check in at Sign-up Table



Eleventh Air Force

Integrity - Service - Excellence

Airspace Management Team **Joint Base Elmendorf-Richardson**

Maj Bill Moody



Eleventh Air Force

Integrity - Service - Excellence

ADMINISTRATION

Silence cell phones and other accessories

Please ensure you have signed in

Hold questions until the end of presentations

Introductions

11 AF/CV – ACMAC Chairman

Breaks



Eleventh Air Force

Integrity - Service - Excellence

Alaska Civil/Military Aviation Council

Col Patrick Moylan



353d Combat Training Squadron



RED FLAG-Alaska FY-11 ACMAC Update



**Major Mark Schmidt
Operations, 353 CTS**

U.S. AIR FORCE



RF-A Exercise Plan



- **RF-A 11-1 (14-29 April 11)**

- **Fam Day (15 Apr 11)**

- **Eielson** **12 x F-16C+**
 - **Kunsan** 12 x F-16
 - **Kadena** 12 x F-15C / 1 x E-3
 - **Netherlands** 11 x F-16
 - **JBER** 1 x E-3
 - **Dyess** 3 x C-130
 - **TTF** 5 x KC-135
-
- **50+ aircraft / 1,300 participants**
 - **Netherlands DF 9 Mar – 14 Apr**

- **NE-11 (09-24 June 11)**

- **Fam Day (10 Jun 11)**

- **USAF**
 - 14 x F-15E
 - 32 x F-15C
 - 12 x F-22
 - 12 x F-16
 - 3 x B-52
 - 3 x E-3
 - 20 x KC-135
- **Navy/Marines**
 - 32 x F/A-18
 - 3 x P-3
 - 3 x KC-130
- **90+ aircraft / 9,000 participants**
- **GPS Jamming**



RF-A Exercise Plan



■ RF-A 11-2 (07-22 July 11)

■ Fam Day (08 Jul 11)

- Osan 12 x F-16 / 10 x A-10
- Kadena 12 x F-15C / 1 x E-3
- Shaw & NJ 24 x F-16
- Eielson 12 x F-16
- JBER 1 x E-3
- Mpls & Yokota 5 x C-130
- Singapore 8 x F-15SG
- Australia 8 x F-18F
- Japan 6 x F-15J / 1 x E-767
- 2 x KC-767 / 3 x C-130
- Thailand 1 x C-130
- Romania 1 x C-130
- **60+ aircraft / 1,600 participants**

■ RF-A 11-3 (11 – 26 Aug 11)

■ Fam Day (12 Aug 11)

- JBER 12 x F-22 / 1 x E-3
- Misawa 12 x F-16
- Eielson 12 x F-16
- Kunsan 12 x F-16
- Whidbey 5 x EA-18G
- 39 BS 3 x B-52
- TTF 6 x KC-135
- Kadena 1 x E-3
- Canada 10 x CF-18 / C-130
- UK ? x GR-4 / 1 x E-3D
- **60+ aircraft / 1,100 participants**
- **GPS JAMMING**

RED FLAG-Alaska

Questions?



ALASKA CIVIL/MILITARY AVIATION COUNCIL

Integrity - Service - Excellence

AIRFIELD STATUS UPDATE



Airport Presentations from:

- Ted Stevens Int'l – Mr. Iagulli
 - Elmendorf AFB – 1Lt Harencak
 - Fairbanks Int'l – Ms. Osborn
 - Allen Army Airfield – Mr. Knight
 - LADD Army Airfield – Mr. Ferguson
 - Bryant Army Airfield – CW3 Malone
 - Eielson AFB – Capt Stimpfel
-

Ted Stevens International

Major Airfield Projects 2011-2013

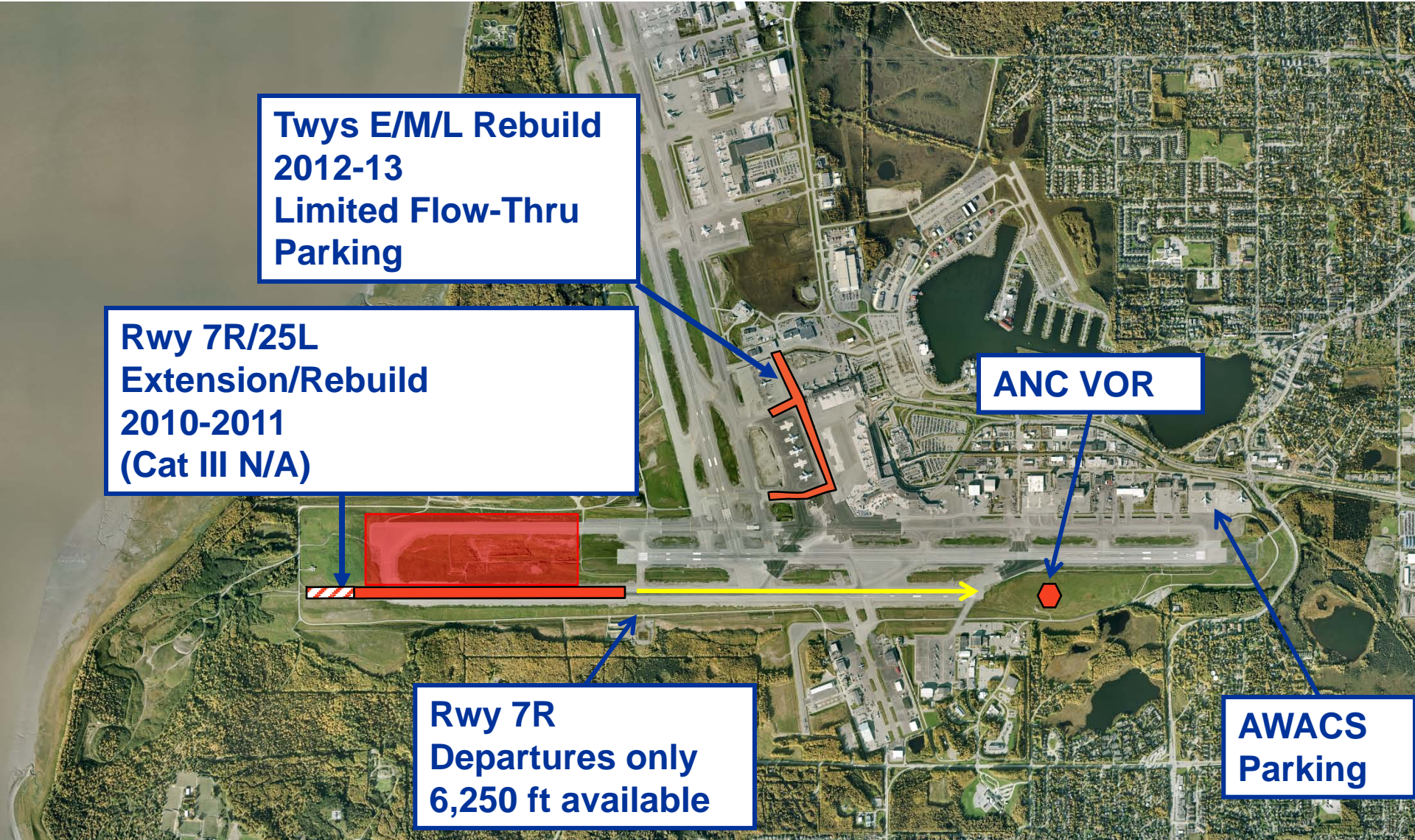
Twys E/M/L Rebuild
2012-13
Limited Flow-Thru
Parking

Rwy 7R/25L
Extension/Rebuild
2010-2011
(Cat III N/A)

ANC VOR

Rwy 7R
Departures only
6,250 ft available

AWACS
Parking



Ted Stevens Anchorage International

CONSTRUCTION PROJECTS / NAVAIDS	CONSTRUCTION PERIOD	EFFECTS/LIMFACs/ TEMPORARY OPS
Rebuild/Extend Rwy 7R/25L	West half – Summer 2011	2010 Const Complete 2011 No Cat III avail
Rwy 7L Cat II Upgrade	Spring 2010	Complete and commissioned
Twy E/L/M Rebuild	Summer 2013	Limited Heavy Acft Parking
Rwy 7L Rebuild ???	Summer 2014	Limited Taxi routes

Elmendorf AFB



F22 Shelters ETIC: Mar 11

Strategic Impact

Tango Row Clsd until 22 Mar 11

Charlie 9 -16 Clsd until 22 Mar 11

Taxiway E/J restricted to wing-span 182ft or less

Ops Ramp Spots 6, 7, and 9-12 Clsd until Jul 11

FTE Complex ECD: Aug 2011

12

April – Jun 2011 Snapshot

Twy K Clsd for HS28 repairs 1 May – 15 Jun 11

HS28 Clsd for repairs 1 May – 15 Jun 11

Charlie Loop Twy Lght Installation 1 May – 31 Jul 11

Charlie Loop spots 8-16 clsd for resurface 1 May – 31 Jul 11

Strategic Impact

Ops Ramp Spots 6, 7, and 9-12 Clsd until Jul 11

Runway 06/24 Clsd 1 May – 2 Jun 11

Charlie Loop spots 8-16 clsd for resurfacing 1 May – 31 Jul 11

Charlie Loop taxiway lights installation 1 May – 31 Jul 11

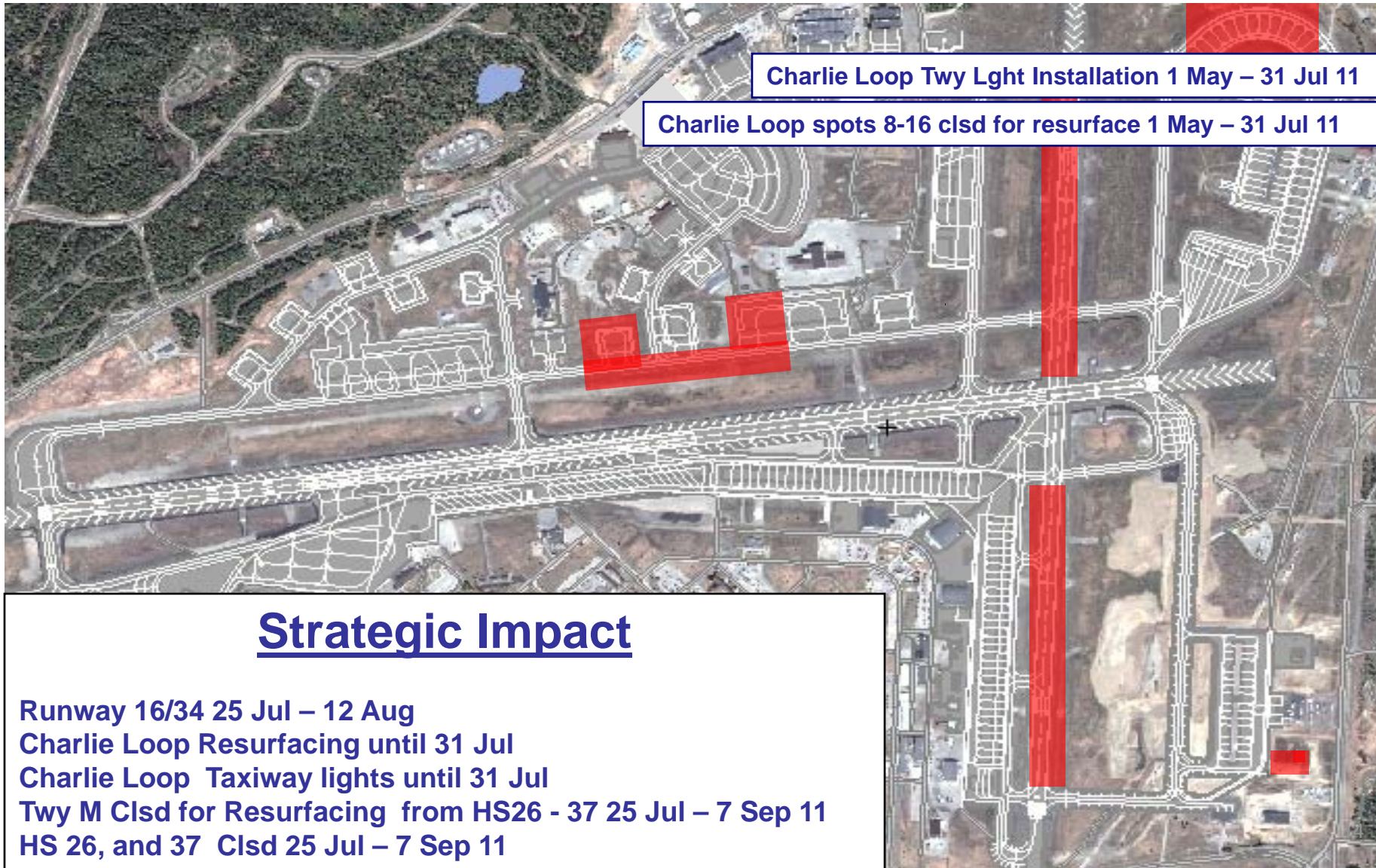
Twy K clsd from HS35- 28 for HS28 repairs

HS28 Clsd shoulder repairs 1 May – 15 Jun 11

Twy P Resurfacing TBD

FTE Complex ETIC: Aug 2011

July – Sep 11 Snapshot



Elmendorf AFB

Short-Term

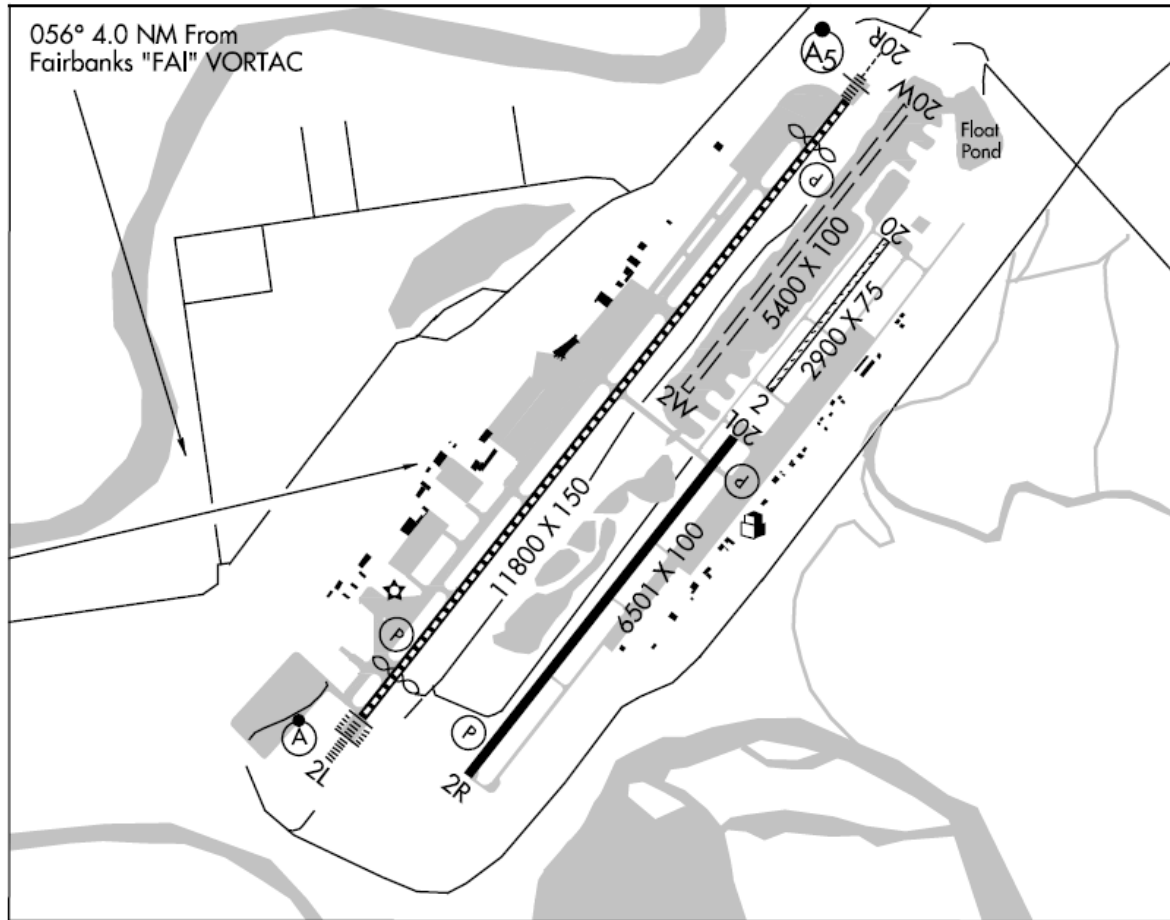
CONSTRUCTION PROJECTS / NAVAIDS	CONSTRUCTION PERIOD	EFFECTS/LIMFACs/ TEMPORARY OPS
Rwy 06/24 Clsd for Annual repairs	1 May – 2 Jun 11	One rwy ops
Rwy 16/34 Clsd for annual repairs	25 Jul -12 Aug 11	Fix barriers 4/5
Ops Ramp South	Aug 2011	Limited Transient Parking
Charlie Loop spots 8-16 clsd re-asphalt	1 May – 31 Jul 11	Limited fighter parking
HS28 Clsd shoulder upgrades	1 May – 15 Jun	176 ANG parking
Twy M Clsd from HS37- HS25	25 Jul -7 Sep 11	Limited transient parking and 176 ANG parking

Elmendorf AFB

Long-Term

CONSTRUCTION PROJECTS / NAVAIDS	CONSTRUCTION PERIOD	EFFECTS/LIMFACs/ TEMPORARY OPS
Complete Fighter town	Aug 11	

Fairbanks International



Fairbanks International

Short-Term

CONSTRUCTION PROJECTS / NAVAIDS	CONSTRUCTION PERIOD	EFFECTS/LIMFACs/ TEMPORARY OPS
20R Glideslope antenna modification	May 23-27	Glideslope outage Flight check required
02L Localizer antenna cabling replacement	June 20-29	ILS outage Flight check required
Approach light grout repair-RWY 02L/20R	TBA-1 week duration	30 min PPR for unscheduled acft at night
Twy B width reduction east side 2L/20R	TBA-Summer 2011	None
Jetway 1 & 2 repositioning	TBA-Summer 2011	Temporarily relocate Alaska Airlines jets to common use gates

Fairbanks International Long-Term

CONSTRUCTION PROJECTS / NAVAIDS	CONSTRUCTION PERIOD	EFFECTS/LIMFACs/ TEMPORARY OPS
ARFF Remodel	2012	None
West side pavement rehabilitation	2012	West side compass rose/VOR checkpoint relocation

Allen Army Airfield



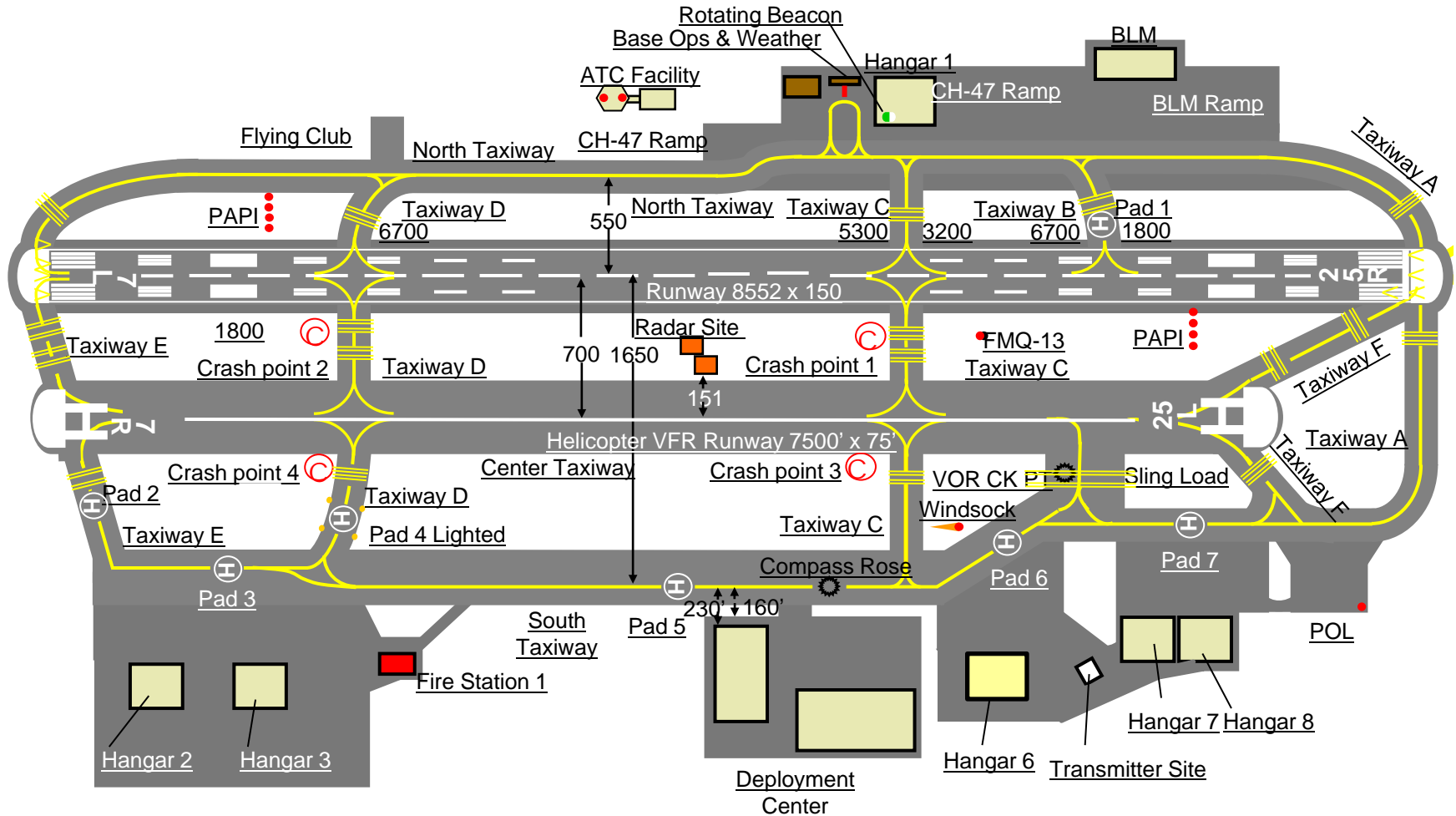
Integrity - Service - Excellence

Allen Army Airfield

Short-Term

CONSTRUCTION PROJECTS / NAVAIDS	CONSTRUCTION PERIOD	EFFECTS/LIMFACs/ TEMPORARY OPS
None		

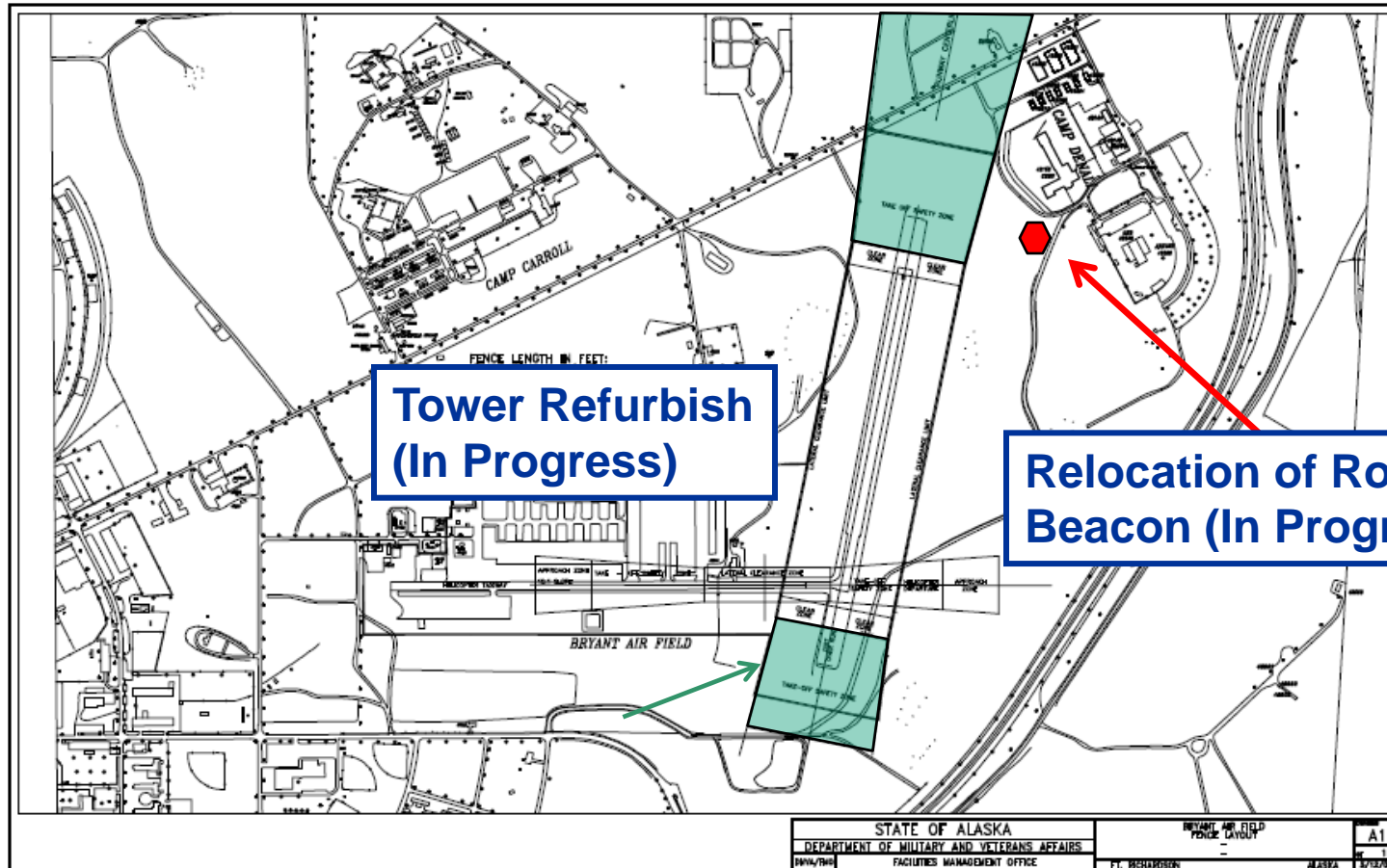
LADD Army Airfield



LADD Army Airfield Long-Term

CONSTRUCTION PROJECTS / NAVAIDS	CONSTRUCTION PERIOD	EFFECTS/LIMFACs/ TEMPORARY OPS
NEW AV BDE FACILITIES SW CORNER OF LAAF	JUN 11-OCT 13	NO LOW OVERFLIGHT OF CONSTRUCTION SITE

Bryant Army Airfield



Bryant AAF

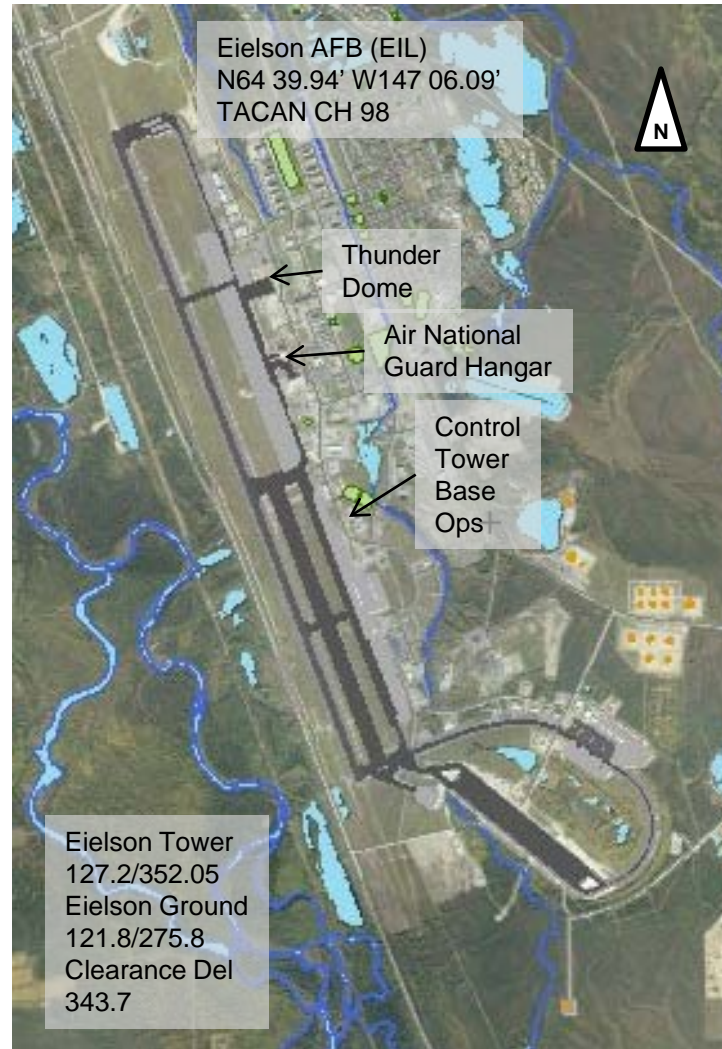
Short-Term

CONSTRUCTION PROJECTS / NAVAIDS	CONSTRUCTION PERIOD	EFFECTS/LIMFACs/ TEMPORARY OPS
Tower Refurbish/Upgrade	Underway	A/F Lighting Sporadic



Integrity - Service - Excellence

Eielson AFB



Eielson AFB

Short-Term

CONSTRUCTION PROJECTS / NAVAIDS	CONSTRUCTION PERIOD	EFFECTS/LIMFACs/ TEMPORARY OPS
Runway Keel Project	1 May – 7 Sep	Eielson closed nightly, Eielson closed on selected weekends
Taxiway Golf (Phase 1)	1 May – 30 Jun	RED FLAG arming moved to north Twy G
Taxiway Golf East Shoulder (add 25' shoulder)	1 May – 31 Aug	2 phases, south (May/Jun), north (Jul/Aug)
Taxiway Golf Lighting	1 May – 31 Aug	Coincide with shoulder work
Repair POL damage to 18 AGRS parking area in front of 8-bay/4-bay	1 May – 31 May	Local fighters will be temporarily moved outdoors.

Runway Keel Execution

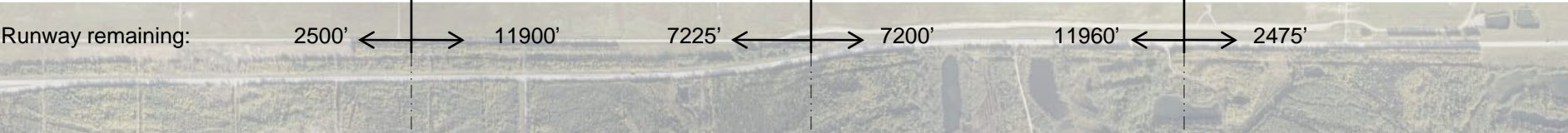


GENERAL SCOPE

- Estimated work schedule is between 1 May - 7 Sep 11
- Work at night: Mon– Sun 2000-0600
 - *Contractor will work 2000 Fri – 0600 Mon on designated weekends
- Contractor to repaint affected area each night
- Estimated cost FY11: \$5M

IMPACTS

- No usable runway during construction periods
- Contractor will have 30 min notification to exit runway for 168 ARW Alert mission/IFE—MUST keep to minimum
- FOD potential



Phase 4 (2500')	Phase 2 (4730')	Phase 1 (4730')	Phase 3 (2475')
<p>16 Aug – 7 Sep</p> <ul style="list-style-type: none"> • RF-A 11-3 (11 - 26 Aug) <p>Wknd Closures: 20-21 Aug 2-5 Sep</p>	<p>13 Jun – 24 Jul</p> <ul style="list-style-type: none"> • Northern Edge (9 - 24 Jun) • RF-A 11-2 (7 - 22 Jul) <p>Wknd Closures: 18-19 Jun 1-3 Jul 9-10 Jul</p>	<p>1 May – 12 Jun</p> <ul style="list-style-type: none"> • RF-A 11-1 (14 - 29 Apr) • Northern Edge (6 - 24 Jun) <p>Wknd Closures: 7-8 May 14-15 May 27-30 May 11-12 Jun</p>	<p>25 Jul – 15 Aug</p> <ul style="list-style-type: none"> • RF-A 11-3 (11 - 26 Aug) <p>Wknd Closures: 30-31 Jul 13-14 Aug</p>

Eielson AFB

Long-Term

CONSTRUCTION PROJECTS / NAVAIDS	CONSTRUCTION PERIOD	EFFECTS/LIMFACs/ TEMPORARY OPS
Repair Taxiway Golf (Phases 2 - 5)	AWT Funding	Golf Closed; will affect RED FLAG Arming
Repair South Loop (Phases 1 - 2)	AWT Funding	South Loop Closed; will affect RED FLAG weapons load area

QUESTIONS?



Eleventh Air Force



Integrity - Service - Excellence

BREAK TIME



NORTHERN EDGE

Alaska's Premier Joint Training Exercise

NE11 - UPDATE

Mike Cabral, Maj, USAF

ALCOM J711



Background

NORTHERN EDGE – one in a series of US Pacific Command exercises preparing Joint Forces to respond to crisis in the Asian-Pacific region.

Biennial exercise, with origins dating back to 1975 – formally renamed NORTHERN EDGE in 1993

All uniformed services and interagency





Overview

PACOM War Plan Exercise

Service Component inputs drive focus
Tactically focused, air & maritime centric

Comprehensive, Realistic Training Design

Air-to-Air, Air-to-Surface, Tactical Command & Control
Live-Virtual-Constructive integration enhances training

Fully utilizes Alaska's training Ranges

Joint Pacific-Alaska Range Complex (JPARC)
Gulf of Alaska (GOA)
Connected to worldwide DoD sites
(DMOC, NWDC, sims)





NE11 Live Participants

USAF Unit	Platform	Location
3WG / 90FS / 525FS	F-22	Elmendorf
18 WG / 67FS	F-15C	Eielson
366FW / 391FS	F-15E	Eielson
53WG / 422TES	F-15	Elmendorf
53WG / 85TES	F-15	Elmendorf
354FW / 18AGRS	F-16C	Eielson
57WG / 65AGRS	F-15C	Elmendorf
2BW / 96BS	B-52	Eielson
18WG / 961AACS	E-3	Elmendorf
552ACW / 963AACS	E-3	Elmendorf
3WG / 962AACS	E-3	Elmendorf
Tanker Task Force	KC-135	Eielson

USMC Unit	Platform	Location
3MAW / VMFA-121	F/A-18	Elmendorf
4MAW / VMGR-452	KC-130	Eielson
3MAW / MACS-23 / 1	TPS-59	Eiel / Kodiak

USA Unit	Platform	Location
USARAK/ 4-25/3ASOS	JFO/JTAC	Ft Wainwright

USN Unit	Platform	Location
CVN / CVW	Multiple	GOA
CRUDES	CG / DDG	GOA
USCG	Cutters	GOA
FFC / VX-9	F/A-18	Elmendorf
NSAWC	F/A-18	Elmendorf
CPF / CPRW10/2	P-3	Elmendorf
USN / VRC-30 Det 4	C-2	Elmendorf
Navy Det Dallas	P-3 LSRS	Elmendorf

Other / Contract	Platform	Location
Commercial Air Svc	Multiple	Elmendorf
JEPAC	BAK1-11	Elmendorf
BIS/MDI	G-2	Elmendorf
Comml Surface Vessel	100' Ships	GOA

TOTAL PARTICIPANTS (as of 4 Apr 11)
UNITS: 31 Ships: 14 Aircraft: 210

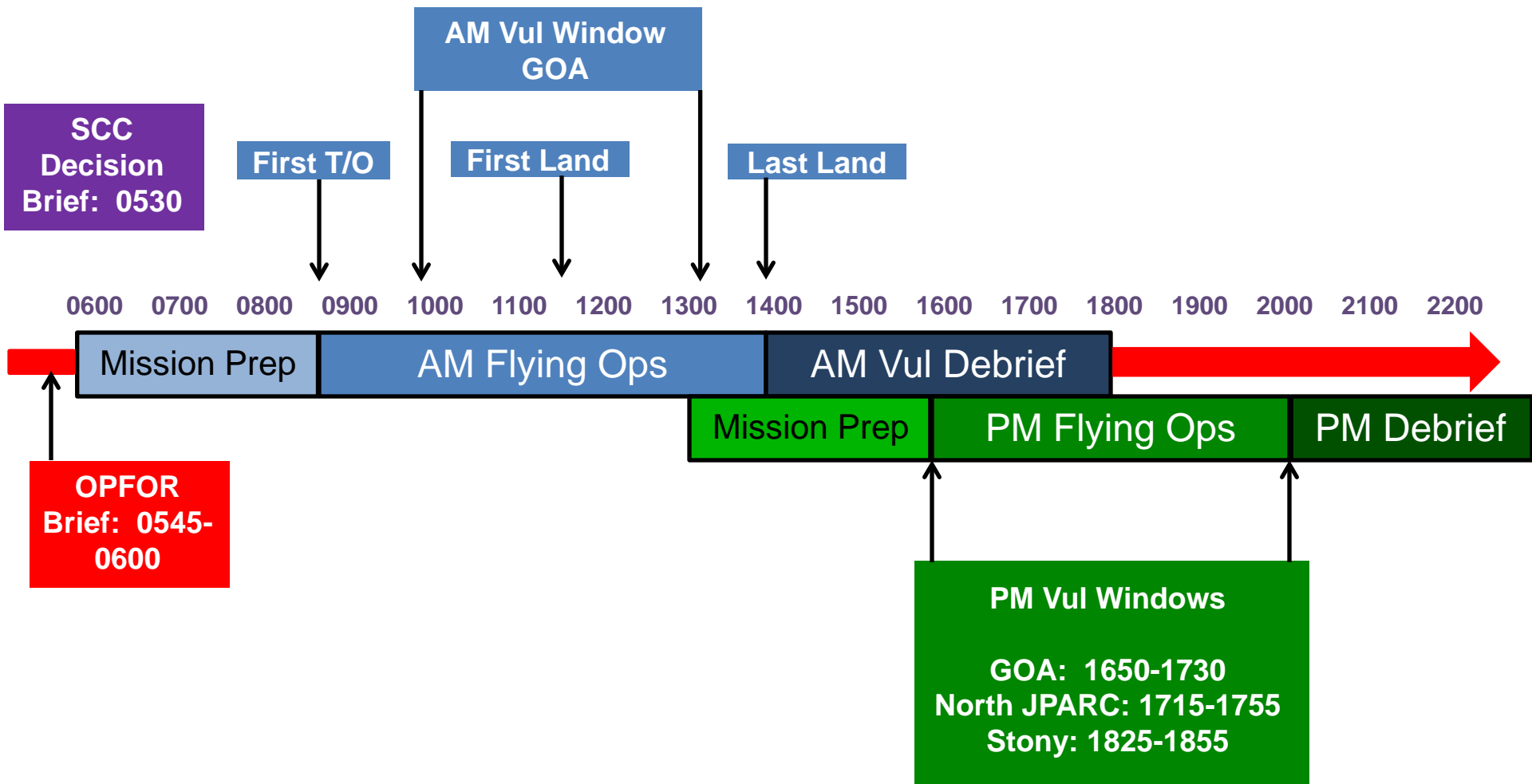


NE11 Calendar

JUNE 2011

SUN	MON	TUES	WED	THUR	FRI	SAT
5	6	7	8	9	10	11
	ARRIVAL IN THEATER			EXERCISE In-Briefs	Local Area Orientation	JECG Training
12	13	14	15	16	17	18
Mission Planning	AM FTX Execution – Gulf of Alaska					
	PM FTX Execution – GOA, Stony MOA, JPARC Overland					
19	20	21	22	23	24	25
	AM FTX Execution – Gulf of Alaska					
	PM FTX Execution – GOA, Stony MOA, JPARC Overland					REDEPLOY
26	27	28	29	30		
	REDEPLOY					

NE11 Daily Schedule





NE11 Highlights

Largest Joint Electronic Warfare Exercise in history

75% of all air platforms with advanced EA capabilities

100% of air platforms employing some type of EA

GPS Jamming, Comm Jamming, Surveillance & Early Warning
Jamming, Air/Surface Jamming, Datalink denial

Experimentation, Science & Technology

12 high-end experiments and simulations

Addressing 6 PACOM Integrated Priority List gaps

Joint, Pacific, and DoD level technology and tactics development



NE11 Highlights

Over 10,400 Joint Exercise participants

31 units, 10 ships, 208 aircraft

All uniformed services, including US Coast Guard

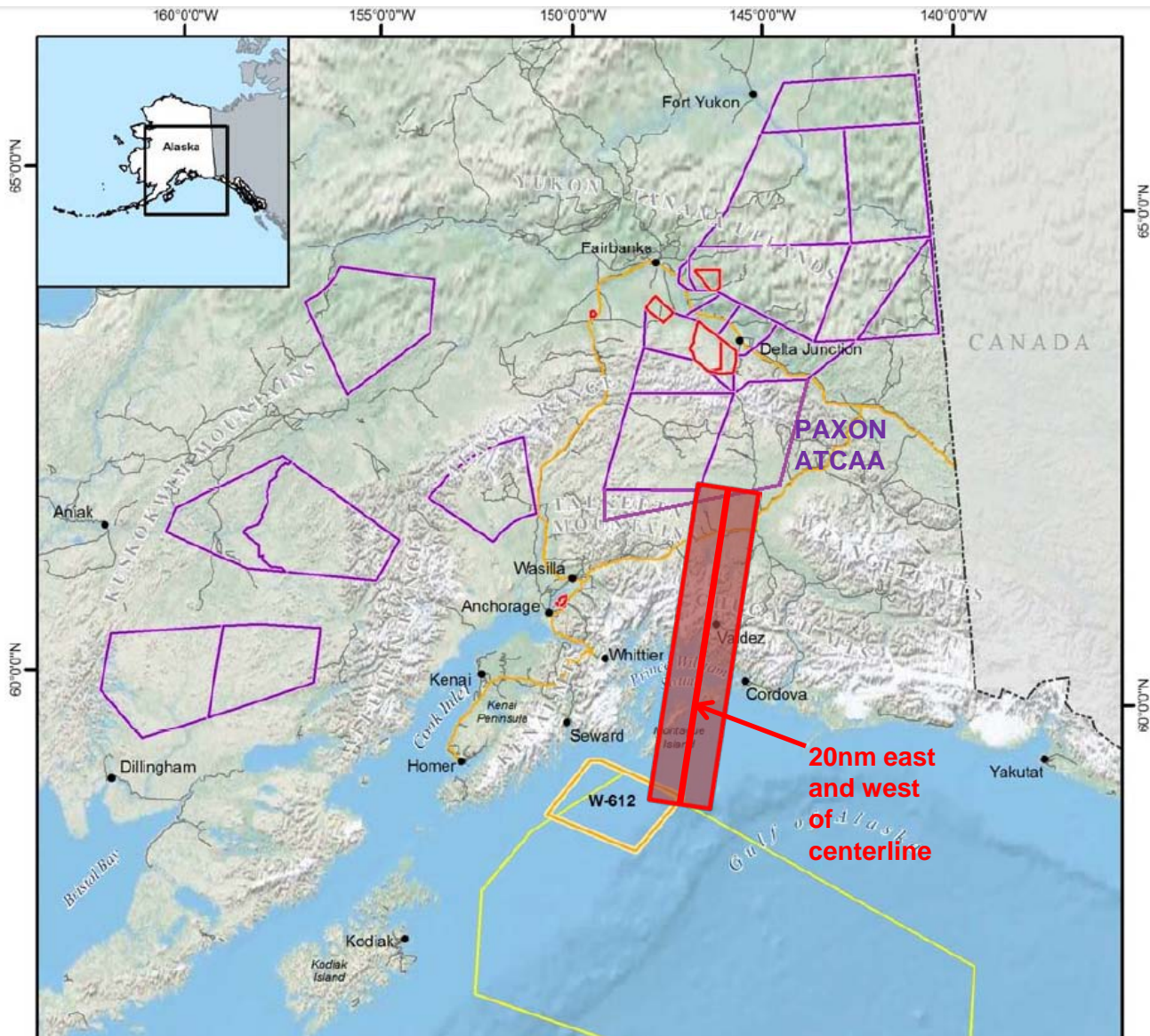
Cooperative support of FAA also essential to exercise success

Extensive use of Alaska's military infrastructure

JB Elmendorf-Richardson, Ft Wainwright, Eielson AFB, Kodiak Coast Guard Station, JPARC and GOA

Traffic Routing

- Traffic flow IAW NE11 Ops and Procedures LOA, 12 Jun 09
- Eielson departures and recoveries via stationary ALTRV, 20nm east and west of centerline N6226W14615 to N5922W14705, FL230-270
- Elmendorf via SP-906 and Chugach recovery, 15K MSL to FL200
- 10nm spacing between flights, max of 4 aircraft per flight
- ALTRV activated 30minutes before and after GOA airspace window



GPS Jamming

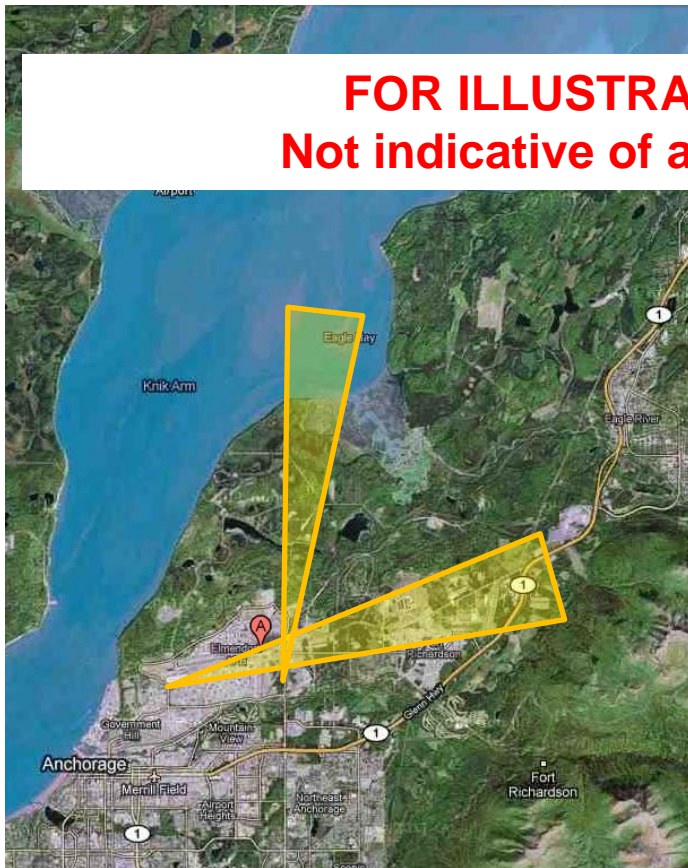
- 2 scenarios for NE11:
 - Airfield denial at Eielson and Elmendorf
 - Tac employment denial in Gulf-of-Alaska

DATE	EIELSON AFB	JBER	GOA	CEASE BUZZER
13 JUN	2-3 hours prior to AM vul (~ 0700-0900)	2-3 hours prior to AM vul (~ 0700-0900)	Takeoff +3hrs (~1000-1200)	2 methods to pass cease jamming order
15 JUN	2-3 hours prior to AM vul (~ 0700-0900)	2-3 hours prior to AM vul (~ 0700-0900)		
16 JUN	BACKUP	BACKUP		Executable within 30 seconds of "cease buzzer"

GPS Jamming: Airfields

- Airfield jamming: directional, narrow azimuth, away from critical ATC facilities, targeted <500'AGL

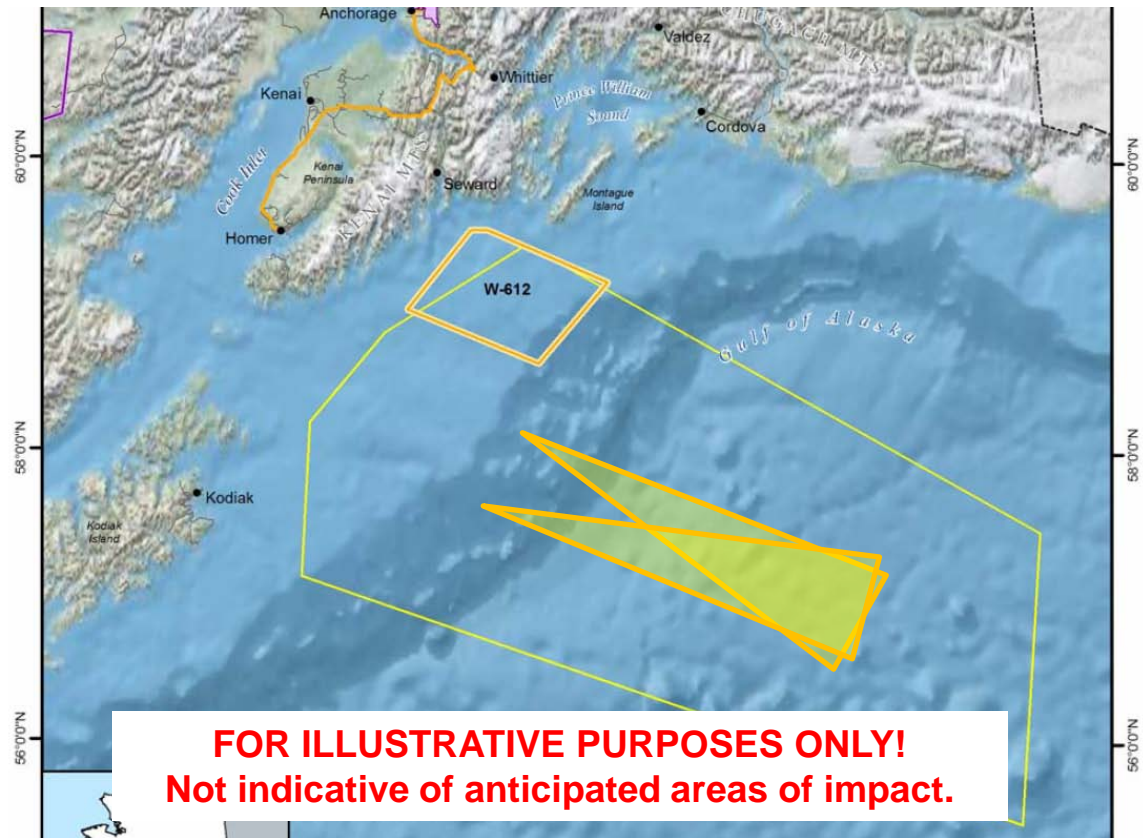
FOR ILLUSTRATIVE PURPOSES ONLY!
Not indicative of anticipated areas of impact.



GPS Jamming: Gulf of Alaska

- GOA jamming: directional, narrow azimuth, away from critical ATC facilities, targeted FL250

- 2 x ship borne GPS jammers
- Targeted area-of-denial is center of GOA
- Jamming directionally oriented towards eastern GOA
- Optimized to target participant aircraft at FL250 and below





GPS Jamming

- Notification methods
 - Public information: this briefing, Public Affairs releases, formal FAA notification (NOTAM)
- What effects will I see?
 - Likely, none. Possible blanking similar to that noticed during periods of intermittent coverage
- What should I do if I note adverse impacts?
 - Specific procedures to be released pending FAA approval (times, contact frequencies, etc.)
 - Notify controlling agency, coordinate alternate navigation
 - Emergency: “cease buzzer” call on GUARD



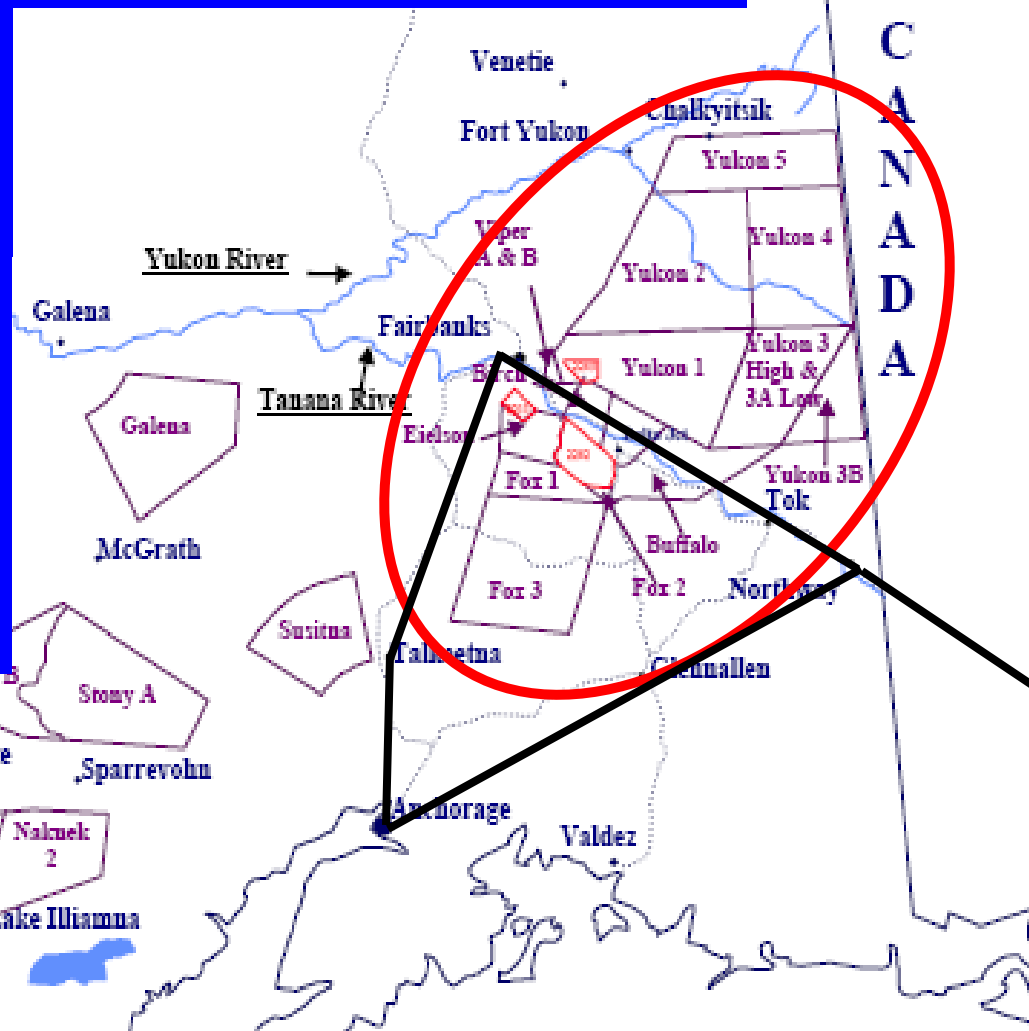
GPS Jamming

QUESTIONS?



Military Operations Areas

- Eastern Alaska MOA complex over 300 miles across
- Too large to fly around!
- AOPA and Alaska Aviation groups demanded real-time information



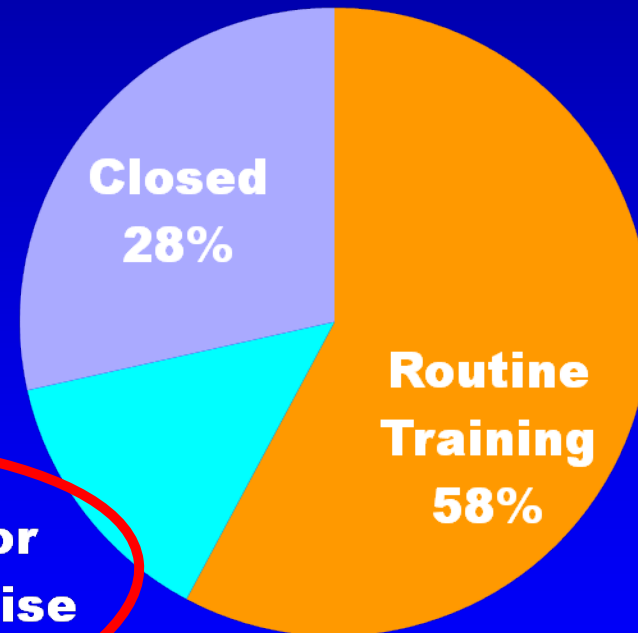
MOA Complex Use

Closed: 100+ days/yr
Routine training: 200+
Major Exercises: 50

- 70+ aircraft at once
- 10 day exercises
- Mock air war
- US and foreign forces

Pilots should avoid
these times if possible!

Annual Usage



**Major
Exercise
14%**

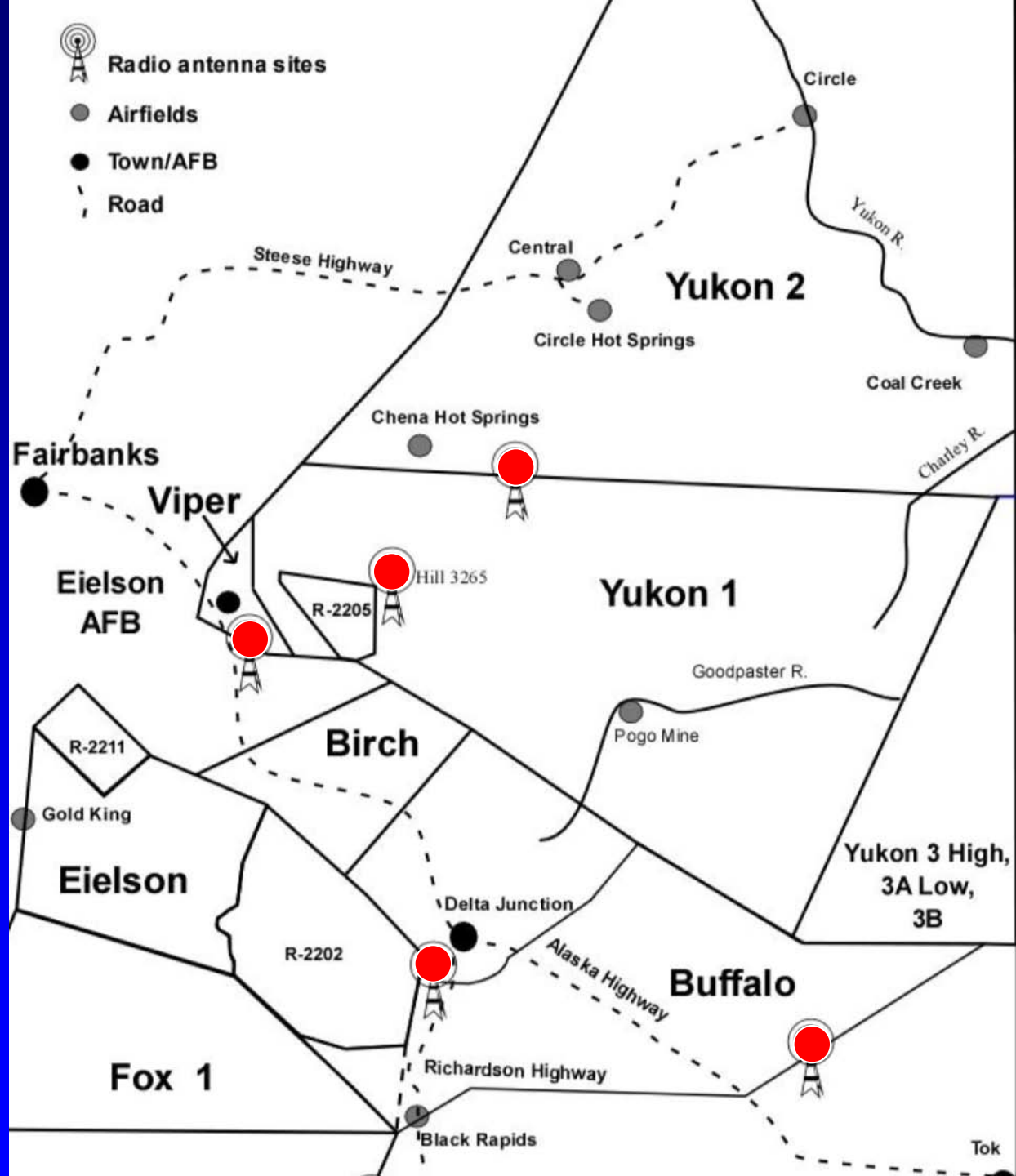
Special Use Airspace Information Service

operated by
Eielson Range
Control

VHF 125.3

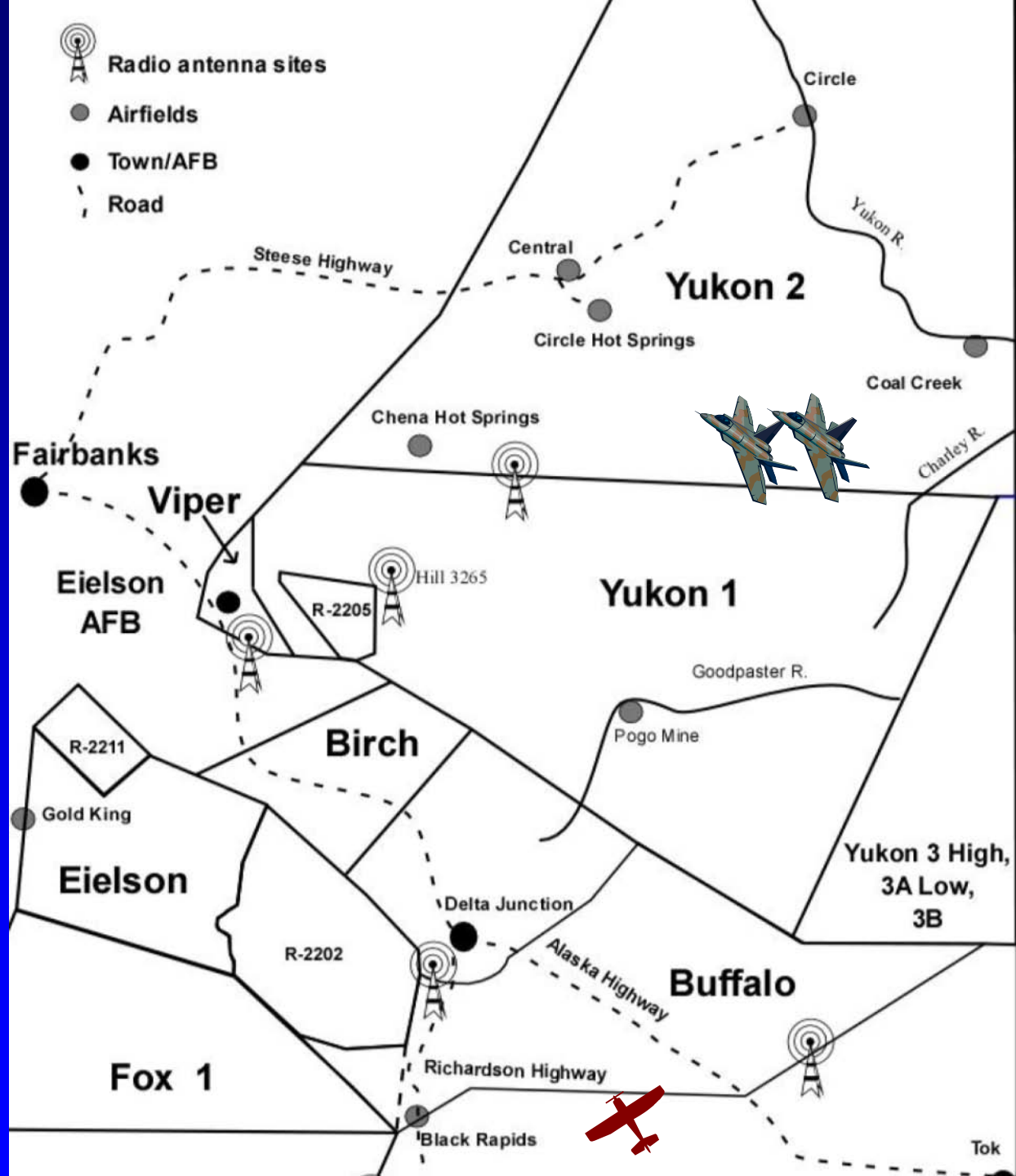
**1-800-758-8723
(907) 372-6913**

 Radio repeaters



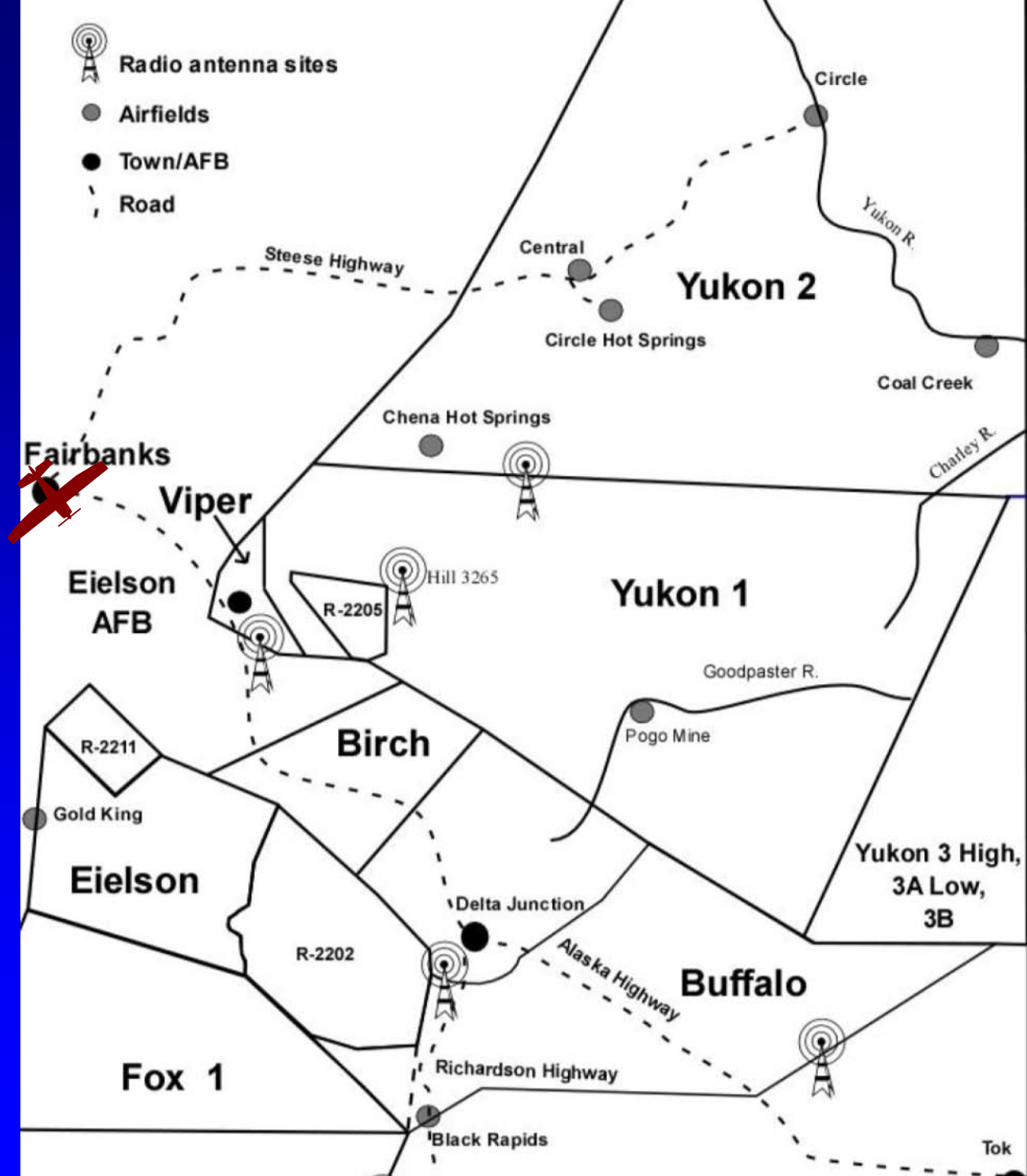
Scenario 1

- Aircraft inbound to Fairbanks
- *"Eielson Range Control, Cessna 1234X 20 SE Delta Jctn, at 6,500' enroute to FAI."*
- Range control advises aircraft of any military traffic, may assign transponder code.
- Range control then contacts military traffic and advises of civil aircraft
- All aircraft have improved situational awareness of each other.



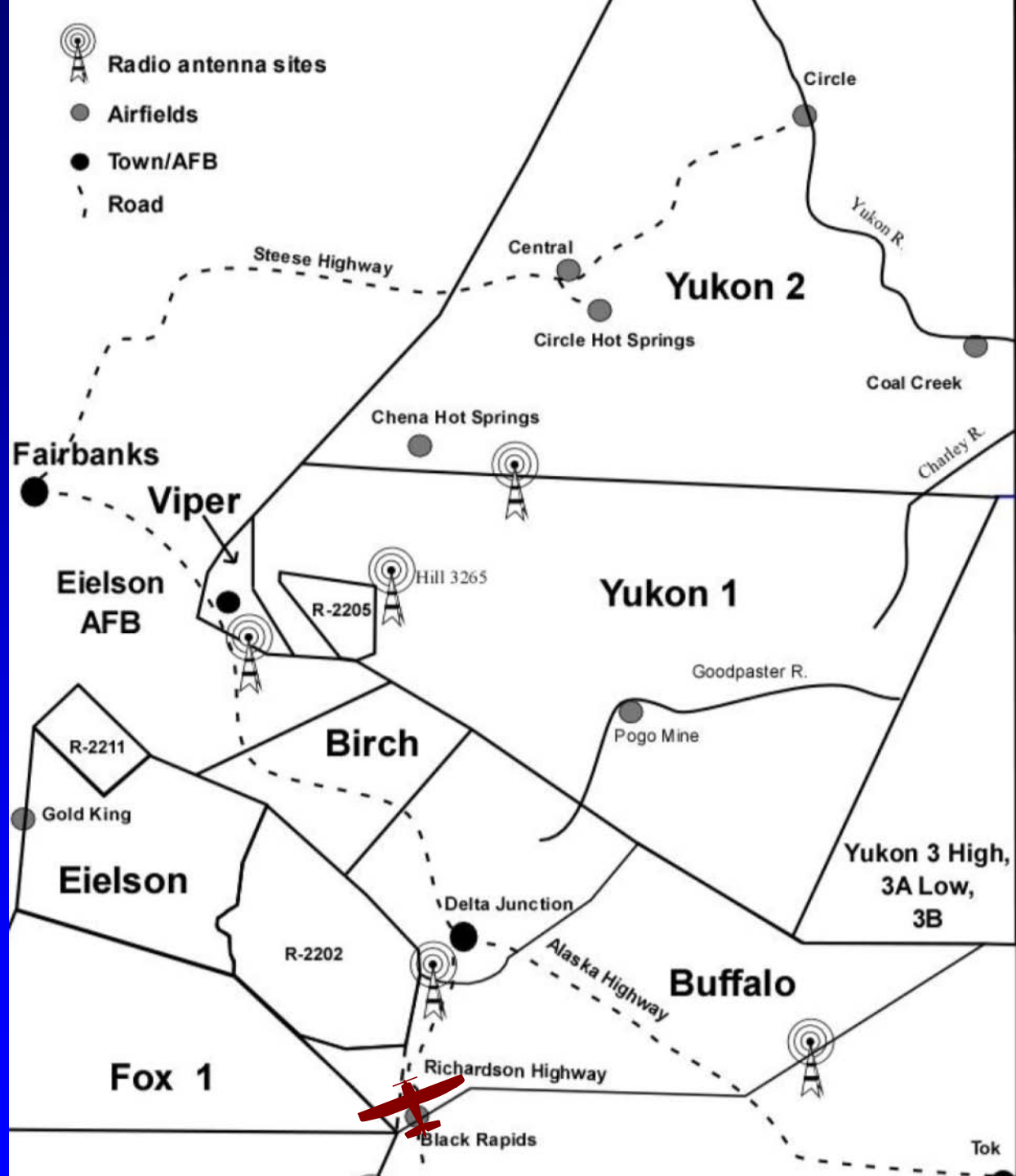
Scenario 2

- Pilot calls Range Control phone number the evening before a flight through the MOAs.
- Recorded message (when airspace is closed) advises pilot of Red Flag exercise next morning.
- Pilot calls the next morning, learns specific times, and departs early to avoid Red Flag operations



Scenario 3

- Aircraft inbound to Fairbanks from the south calls Eielson Range control via radio:
- *“Eielson Range Control, Cessna 1234X over Black Rapids. Is R2202 in use?”*
- Range control advises aircraft that next use will be in 20 minutes, and Cessna 1234X proceeds through R2202, saving time to FAI



More information:

<http://www.jber.af.mil/11af/alaskaairspaceinfo/>

Click on “Special Use Airspace Information”

Download:

- SUAIS Brochure with maps
- Dates of Major Flying Exercises
- Military Training Routes Info & Maps

- Frequency charted on Sectional Maps

SUAIS

Then & Now



Bill Moody, Major, USAF
611 AOC/CODK
Airspace/Range Team Chief



WHAT IS SUAIS?



- **Special Use Airspace Information Service**
- **Early '90s response to additional AK SUA proposals – aka, the '95 EIS**



WHY SUAIS?



- **Concern for safety of shared airspace**
- **More Co\$t Efficient Use of Airspace**
 - **DoD gets more training**
 - **Civ users avoid circumnavigating SUA**





GOALS OF SUAIS



- **Real time increased situational awareness to all users of MOA activity via in-flight advisories**
- **GA Planning capability to avoid short active periods of SUA**
- **Enhance Flight Safety For All**

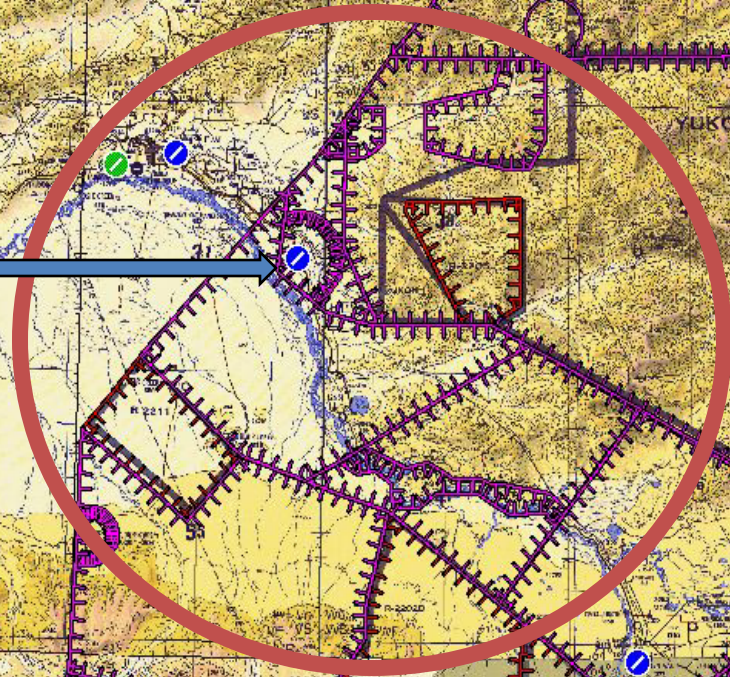


EARLY SUAIS



- **By late '93, AF had VHF 123.5**
- **Existing/avail radios near Eielson**
- **Coverage = 50-75 mile radius**
 - **BIRCH & EIELSON MOAs**
 - **Most of 3 Restricted Areas**
 - **R2202, R2205, R2211**
- **Toll Free Dial-In Number**

Eielson AFB



Approximate Reception Range in '93



EARLY PROBLEMS



- **No One Answers Radio/Phone**
- **Reception Range Low**
- **No Way To Plan Outside Ops Hrs**



IMPROVEMENTS

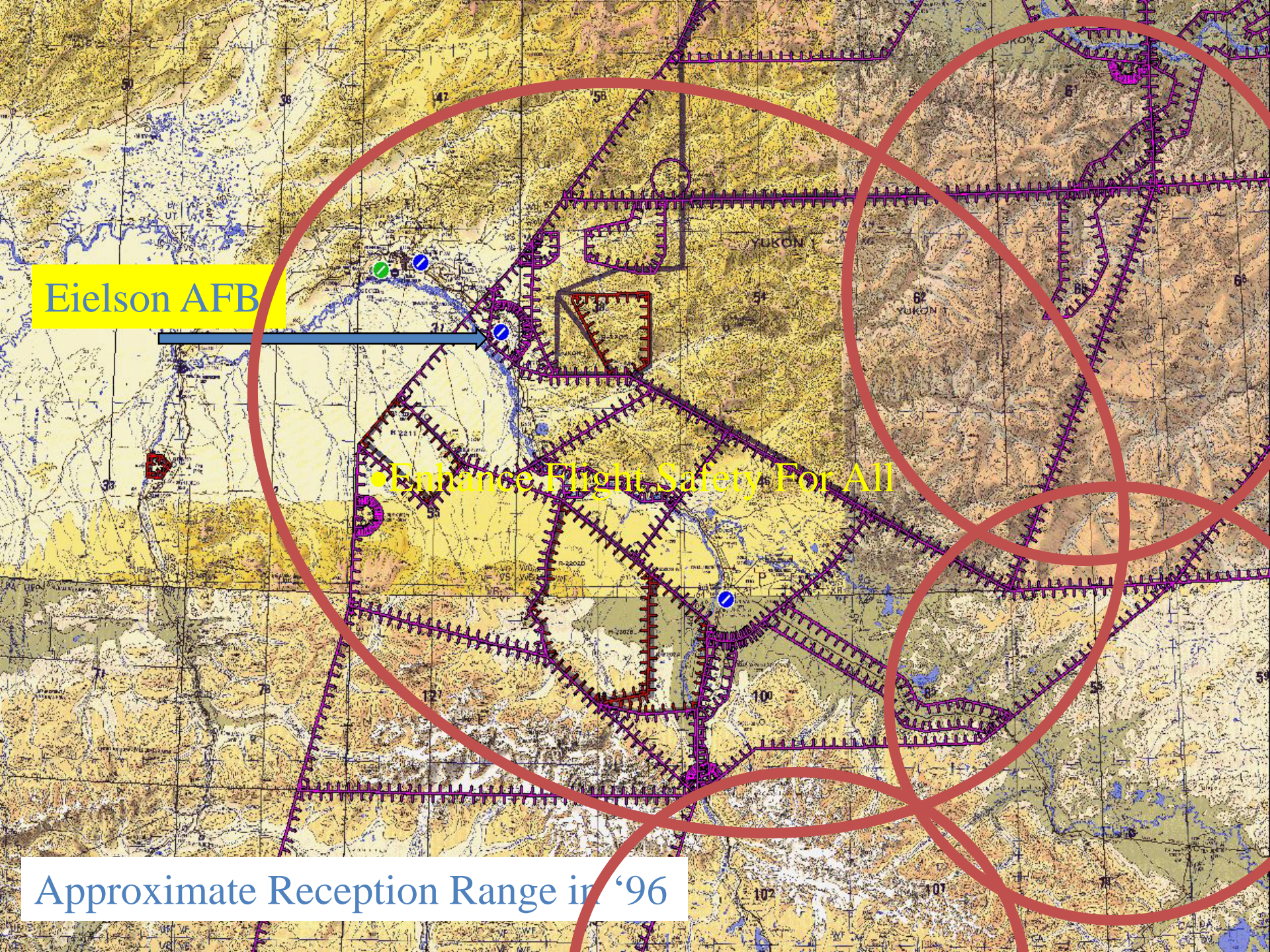


- **Recorded message added to offer 24 hour service**
 - **Radio and telephone**
- **Radio Repeaters added**

Eielson AFB

• Enhance Flight Safety For All

Approximate Reception Range in '96



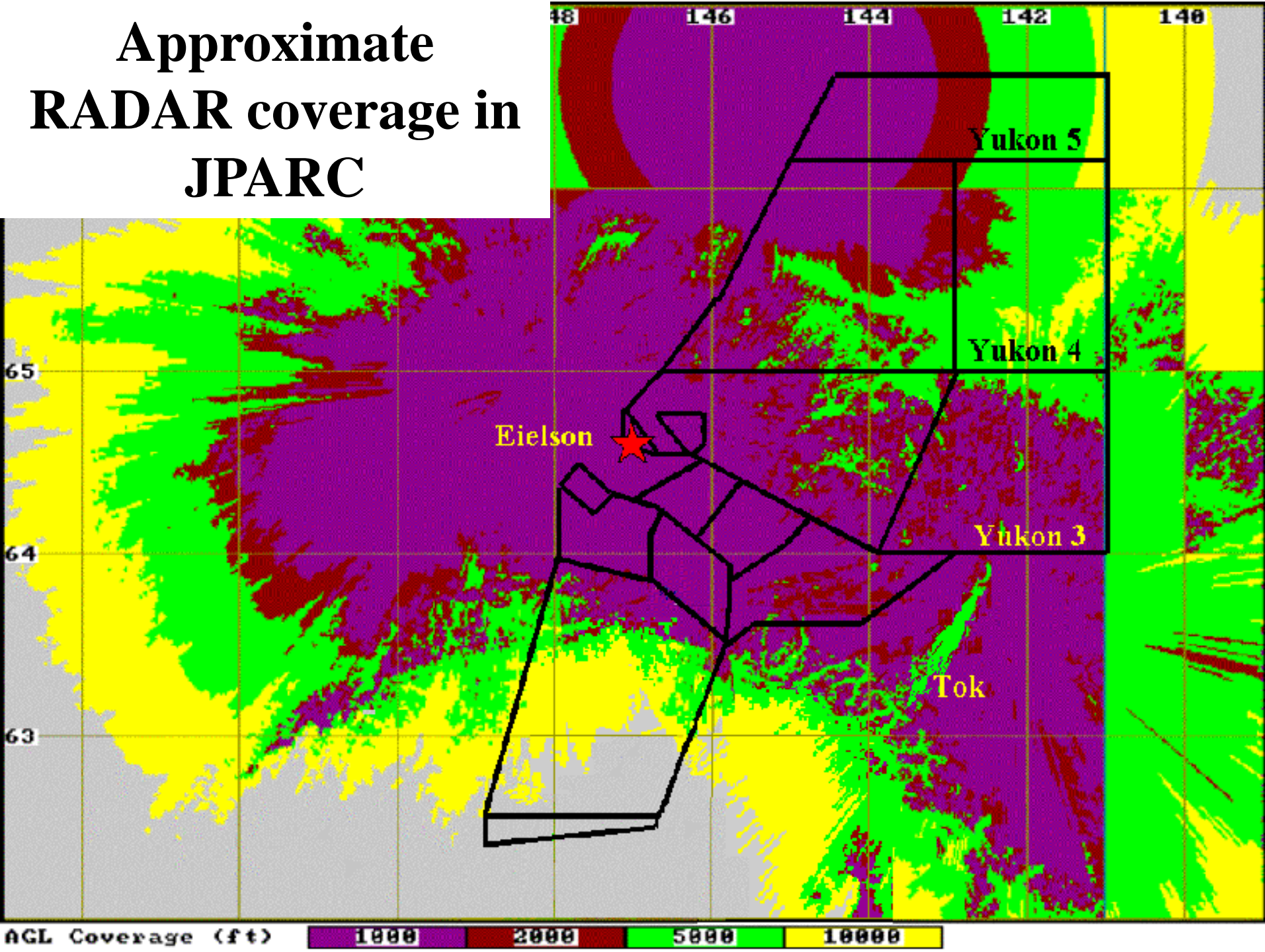


RADAR



- **FAA + MIL Radar feeds combined**
- **Good vis of JPARC North of the AK Range**
- **Transponder HUGE help for small aircraft**
- **Otherwise, update position reports**

Approximate RADAR coverage in JPARC





CURRENT STATUS



- **Good Radar Coverage**
 - **All but FOX MOA and NE Yukon**
- **Good Radio Coverage**
 - **All but western FOX MOA**
 - **FOX Relay coming soon**



SO, WHAT EQUIPMENT IS REQUIRED?



- '95 EIS led to SUAIS LOA ('99)– FAA/MIL**
- **Specifies Radios**
 - **Specifies SUA Concerned**
 - **Radio-Out Mitigations**
 - **Multiple Failures = Raised MOA Floor**



CURRENT SYSTEM STATUS



- **Knob Ridge Radio OTS**
 - **Area covered by other Radios**
- **Additional Radios in Service**
 - **Mt Taylor, Snowy Pk, Gulkana**
- **FOX Relay in Place**
 - **Tie-In Equipment Next Step**



COMMENTS



- **How can we improve the service?**
- **What additional methods can we use to get the word out?**
- **What questions do you have?**



SOLUTIONS?



Eleventh Air Force

Integrity - Service - Excellence

OPEN FORUM



Eleventh Air Force

Integrity - Service - Excellence

CLOSING COMMENTS

Col Patrick Moylan