



C-17 GLOBEMASTER III





Overview



- **C-17 Missions**
- **Beddown Status**
- **Training Profiles**
- **Anchorage Traffic**



C-17 GLOBEMASTER III



Global Direct Delivery



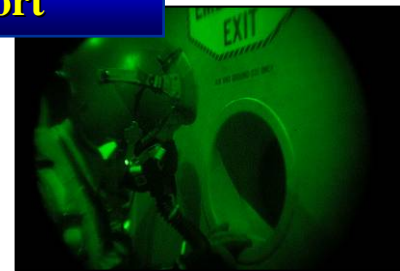
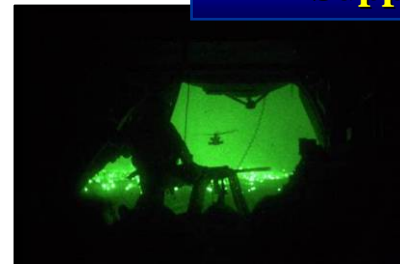
Rapid Outsized Strategic Airlift



Strategic Brigade Airdrop



Special Operations Support





C-17 GLOBEMASTER III



C-17 ALZ

**Average
Airfield
(C-141/KC-135)**

**International
Airport
(B-747 & C-5)**

**ALZ TRAINING CRITICAL TRAINING
REQUIREMENT**



Beddown Status



- **7 Aircraft (3 on global missions)**
- **8th on Dec 7 (4 on global mission)**
- **9th possible w/o increase in ops**
- **Two squadrons of aircrew**
 - **517 AS Active Duty**
 - **249 AS AKANG Associate**
- **Crew buildup lags aircraft build**



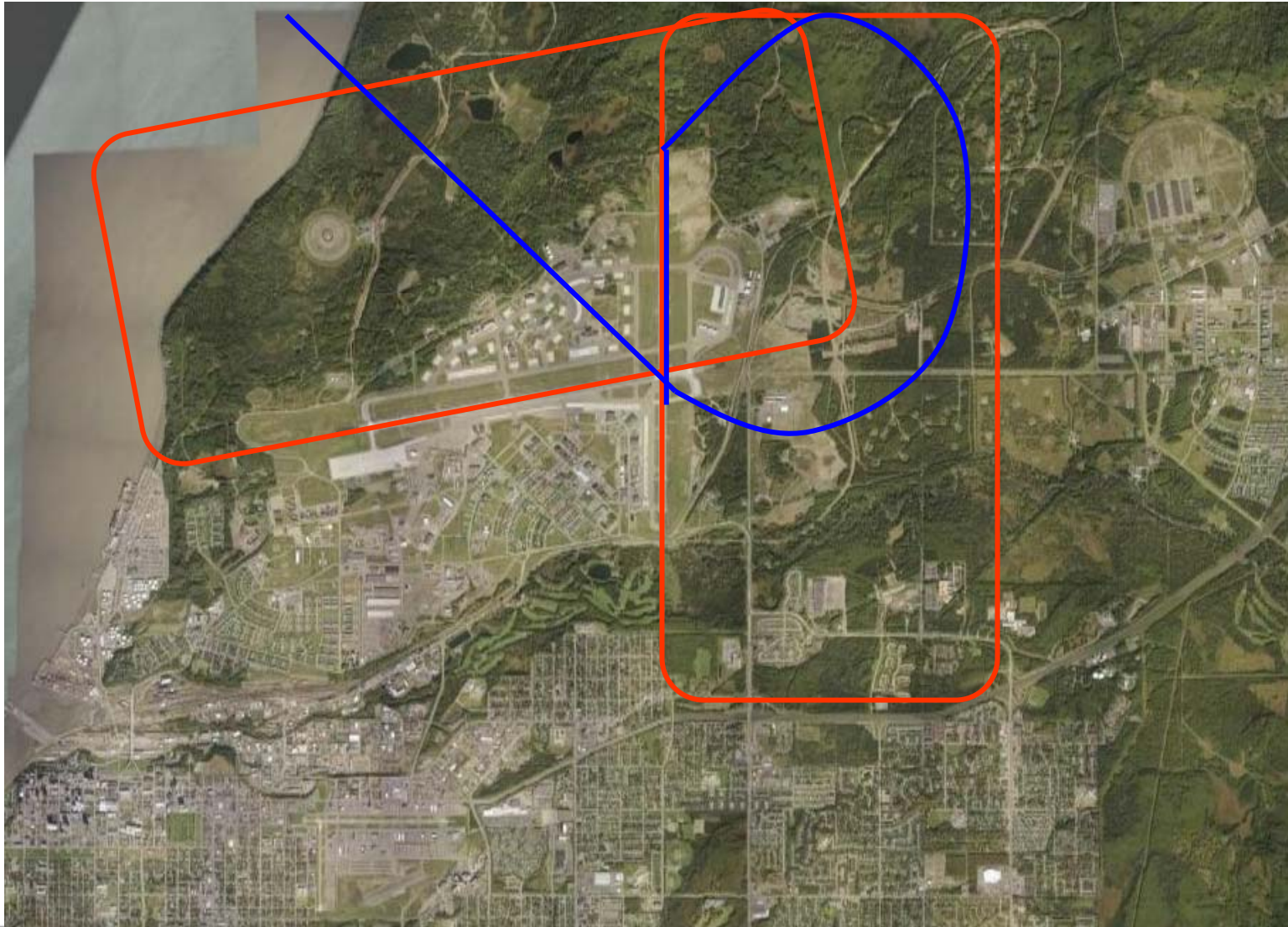
Training Profile



- **Typical Training**
- **Air land Mission**
 - **Low-Level Training (MTR or LATN)**
 - **Air Refueling Training in Northern AR tracks**
 - **ALZ Training at Allen AAF or Elmendorf AFB**
- **Airdrop Mission**
 - **2-Ship or Multi-Element Formations**
 - **Low-Level Training (MTR or LATN)**
 - **Airdrop at Malamute or Northern Drop Zones**
 - **ALZ Training at Allen AAF or Elmendorf AFB**

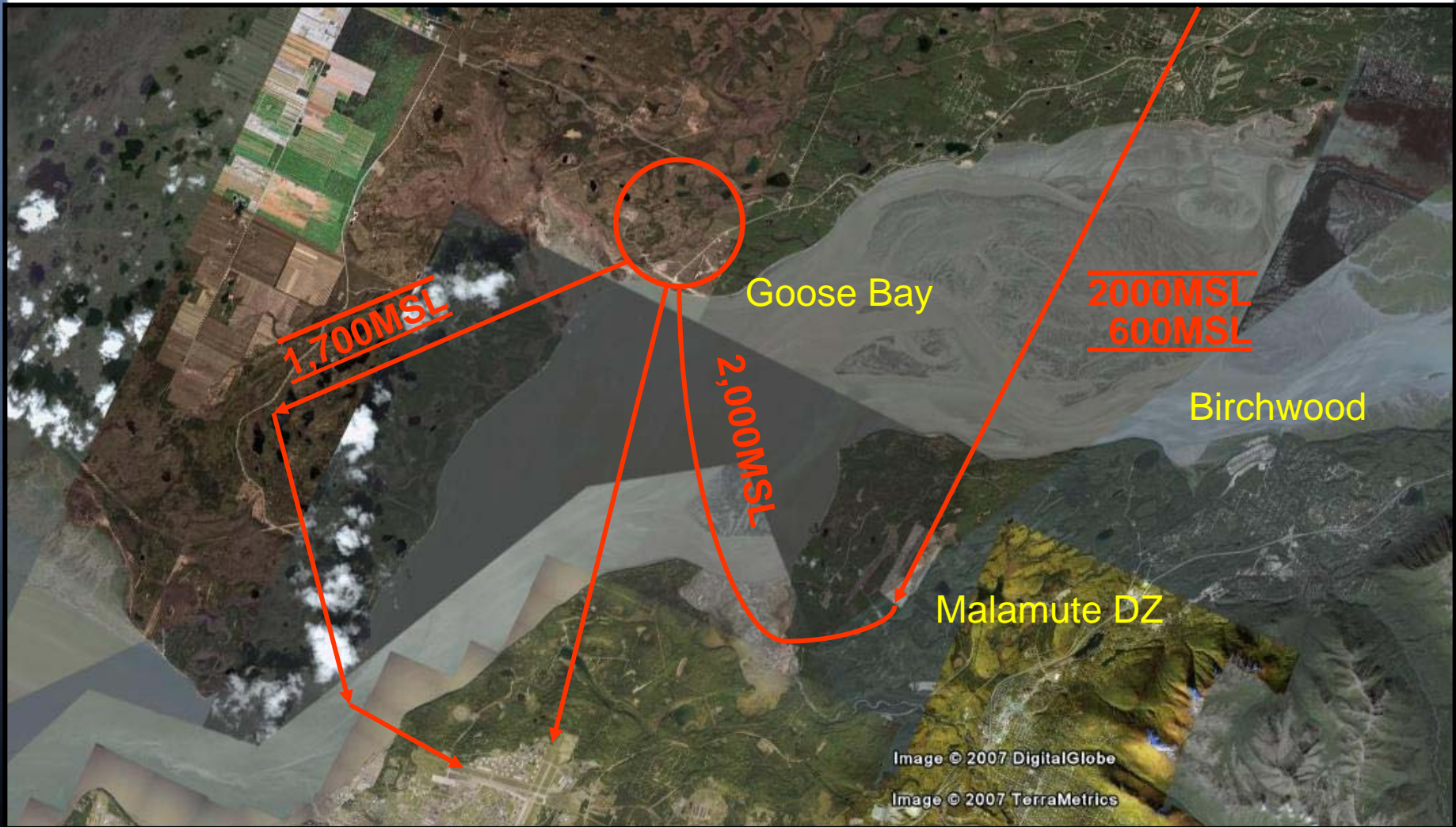


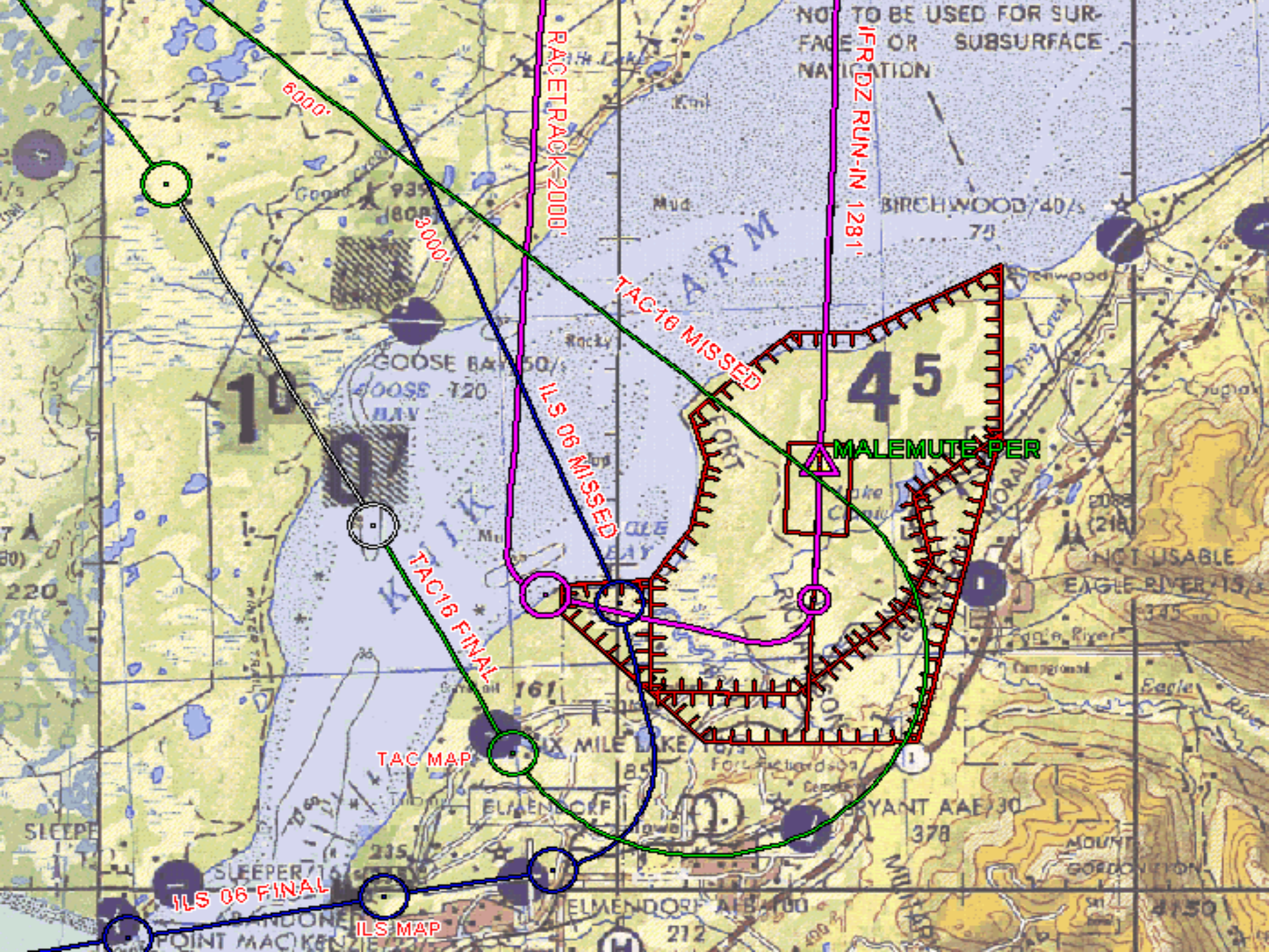
C-17 Pattern





C-17 Airdrop Training







QUESTIONS