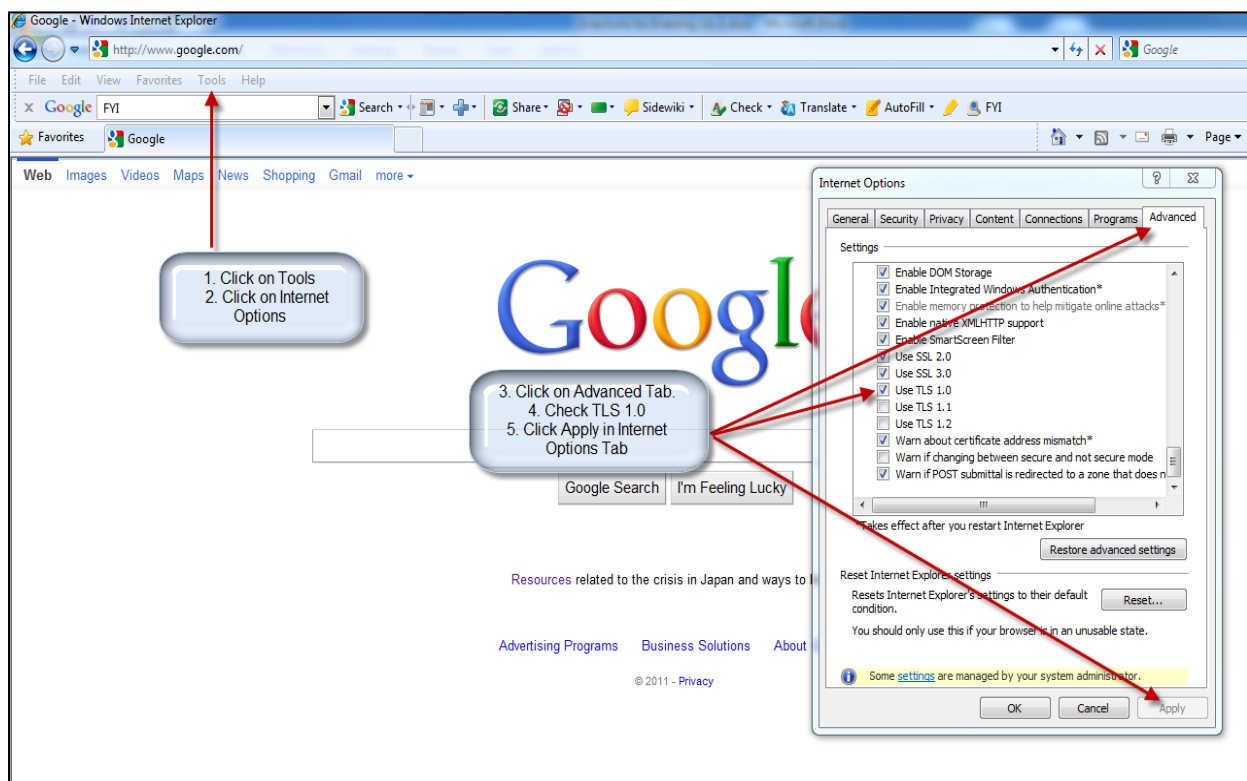


# Directions for Enabling TLS 1.0 for Internet Explorer, Firefox, Safari, and Chrome

## Internet Explorer

In order to enable TLS 1.0 the desktop user will be required to open Internet Explorer (IE) and follow the below steps:

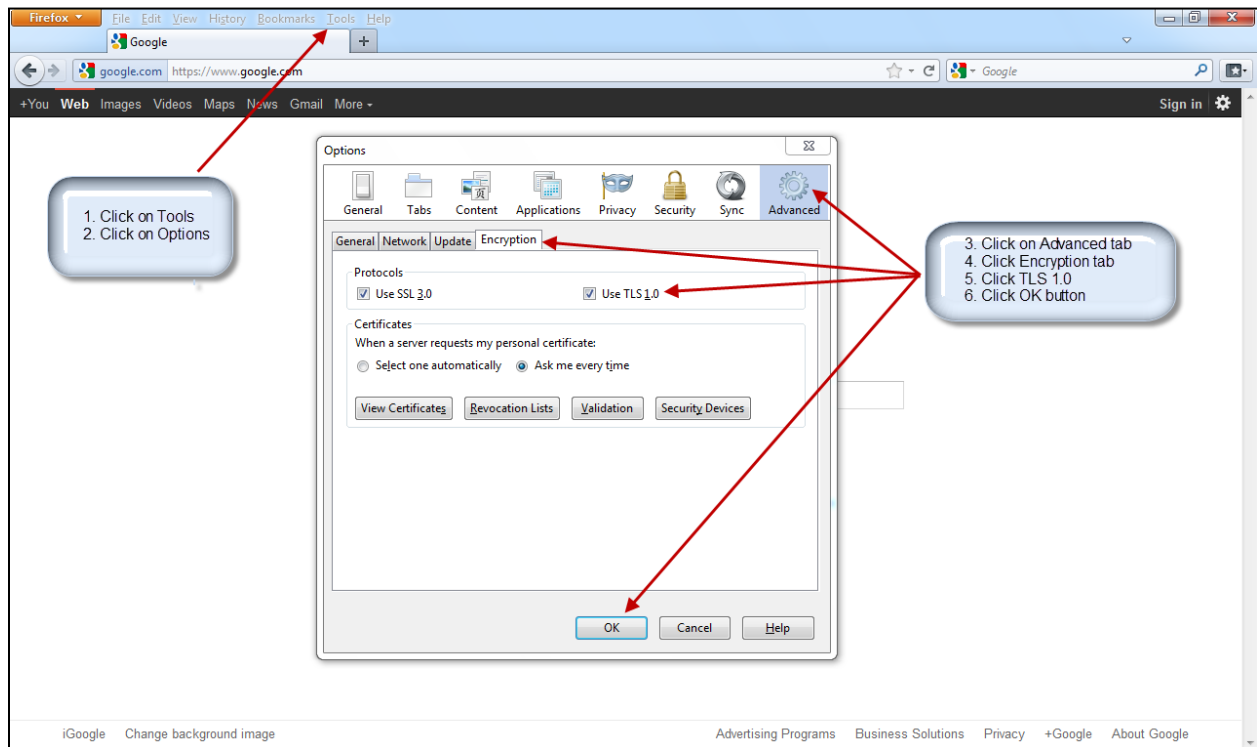
1. Click on “Tools” in the top menu bar of the IE browser
2. Click on “Internet Options”
3. Click on the “Advanced” tab within the Internet Options window
4. Scroll down in the “Advanced” tab and select the “TLS 1.0” checkbox
5. Click “Apply” in the Internet Options tab



## Firefox

In order to enable TLS 1.0 the desktop user will be required to open Firefox and follow the below steps:

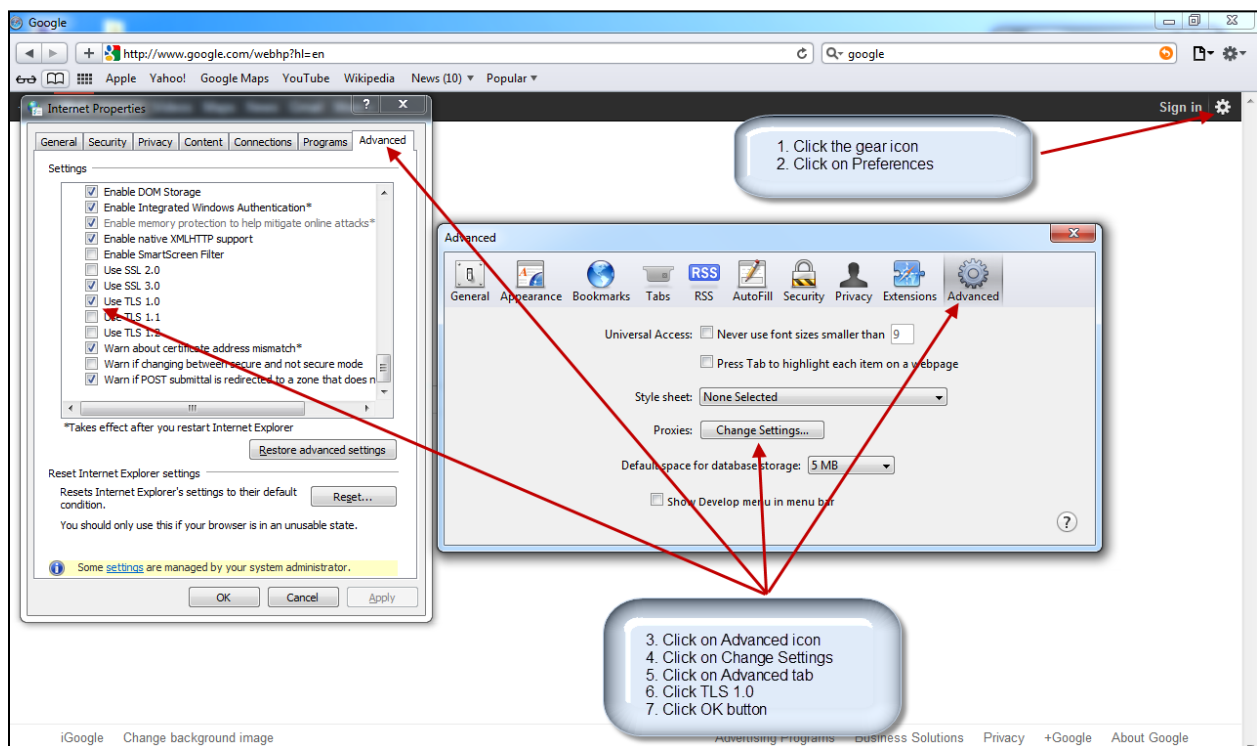
1. Click on “Tools” in the top menu bar of the Firefox browser
2. Click on “Options”
3. Click on the “Advanced” icon within the Options window
4. Click on the “Encryption” tab
5. Select the “TLS 1.0” checkbox
6. Click the “OK” button



## Safari

In order to enable TLS 1.0 the desktop user will be required to open Internet Explorer (IE) and follow the below steps:

1. Click on the gear icon on the right-hand side of the address bar in the Safari browser
2. Click on “Preferences”
3. Click on the “Advanced” icon within the Advanced window
4. Click the “Change Settings...” button
5. Click on the “Advanced” tab within the Internet Properties window
6. Scroll down in the “Settings” section and select the “TLS 1.0” checkbox
7. Click the “OK” button



## Chrome

In order to enable TLS 1.0 the desktop user will be required to open Chrome and follow the below steps:

1. Click on the wrench icon on the right-hand side of the address bar in the Chrome browser
2. Click on “Options”
3. Click on “Under the Hood”
4. Click on the “Change proxy settings...” button
5. Click on the “Advanced” tab icon within the Internet Properties window
6. Scroll down in the “Settings” section and select the “TLS 1.0” checkbox
7. Click the “OK” button

