

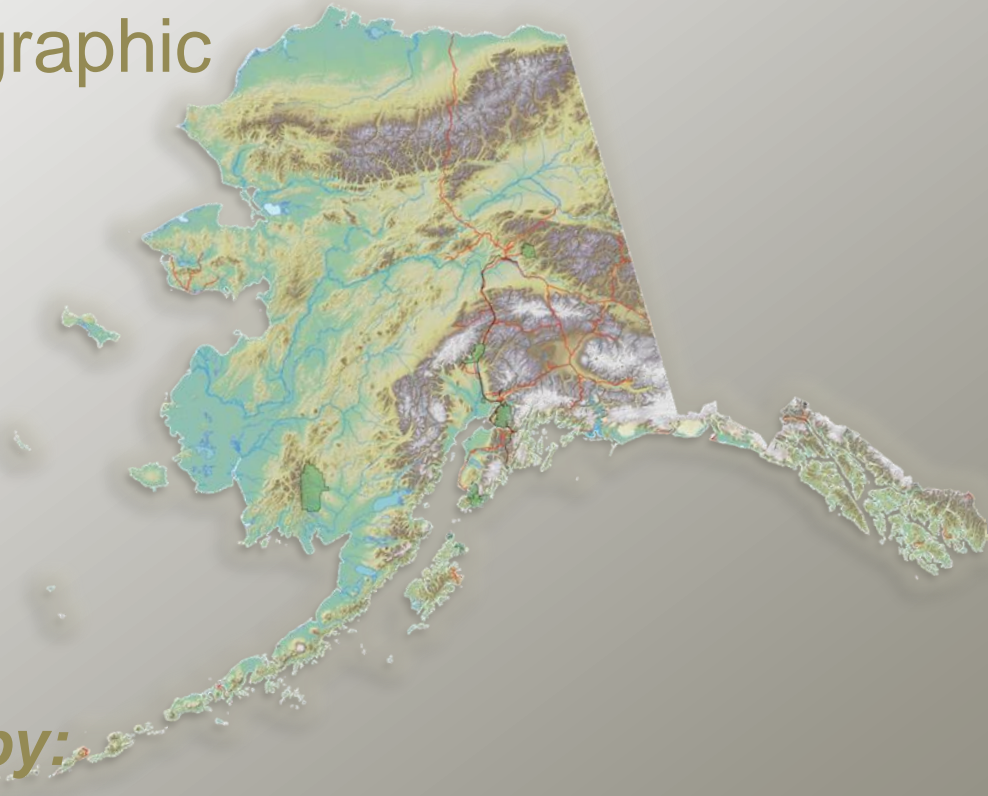
Putting Alaska on the Map

Alaska Statewide Topographic
Mapping Roundtable
June 28, 2012



Presented by:

Mead Treadwell, Lieutenant Governor





*Our
Neighborhood:*

**United States
(Alaska)**

Canada

**Denmark
(Greenland)**

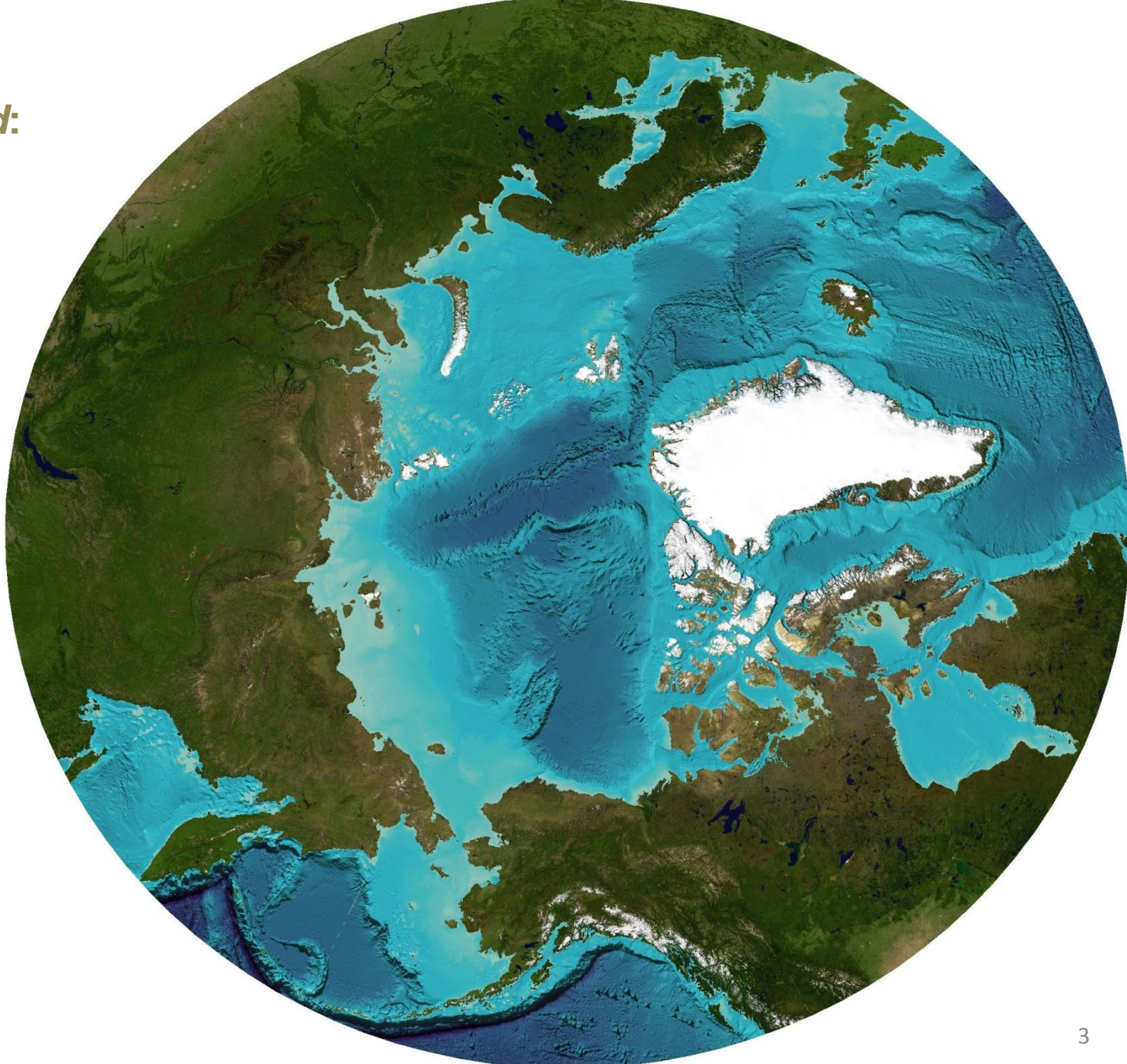
Iceland

Norway

Sweden

Finland

**Russian
Federation**



The *worst* **inaccuracy** of all!



The State of Alaska is committed to supporting statewide digital mapping



1. FY2012 budget included \$1.75 million in state general funds for SDMI
2. FY2013 budget includes \$3.7 million in state general funds for SDMI; up to \$15.9 million total with federal funds
3. Alaska agencies together developed Alaska Geospatial Strategic Plan
4. Alaska continues to engage federal partnerships

Alaska's Commercial Opportunities



1. Keep the Alaska Pipeline Full
2. Capitalize on our Strategic Location
Air Cargo Transit, Shipping Routes, Military Training
3. Develop our Rare Earth Elements
4. Manage Sustainable Fisheries
5. Promote a Robust Aerospace Industry

→ All of these depend on accurate elevation data