



Alaska Department of Transportation & Public Facilities

**Federal Roundtable
Washington DC
Nick Mastrodicasa**

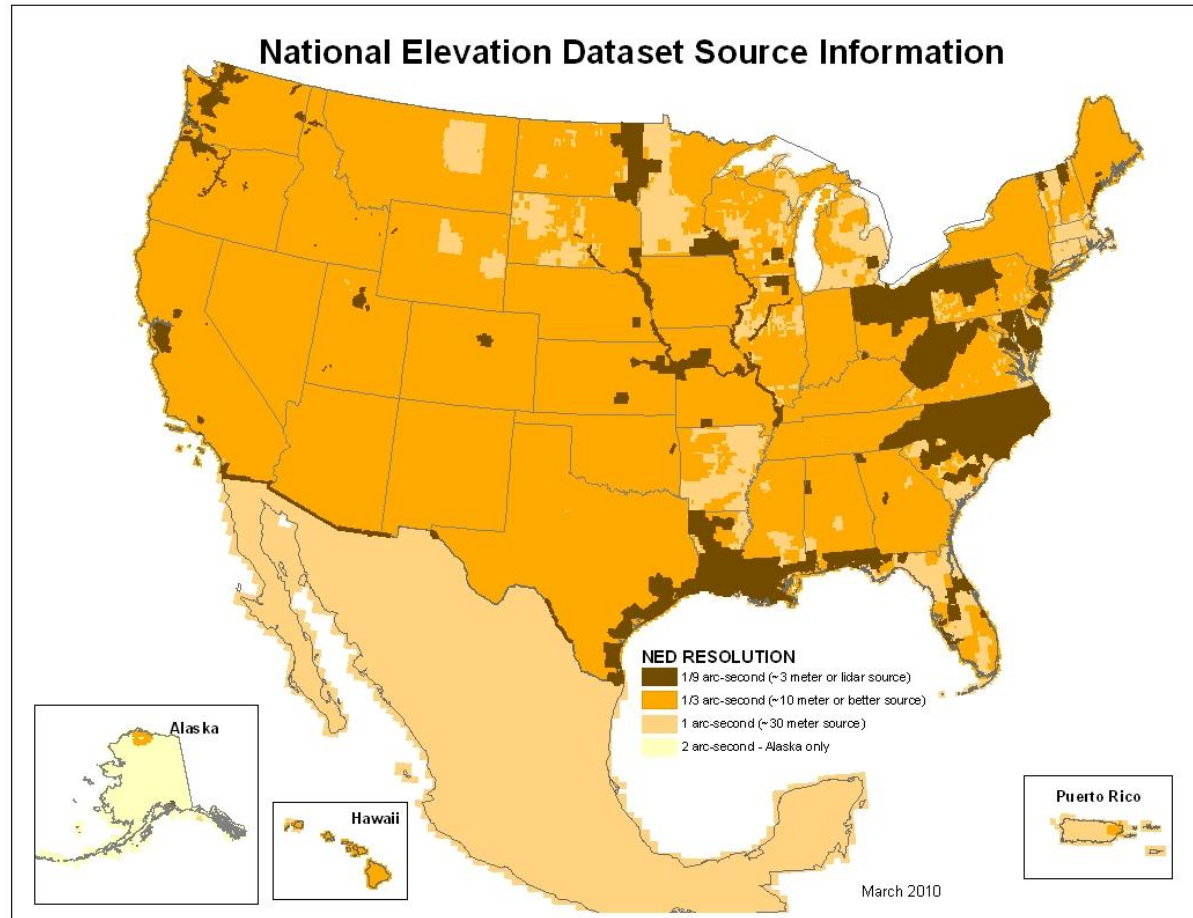
6/28/12



AK STATUS 2010

ALASKA'S MAP:

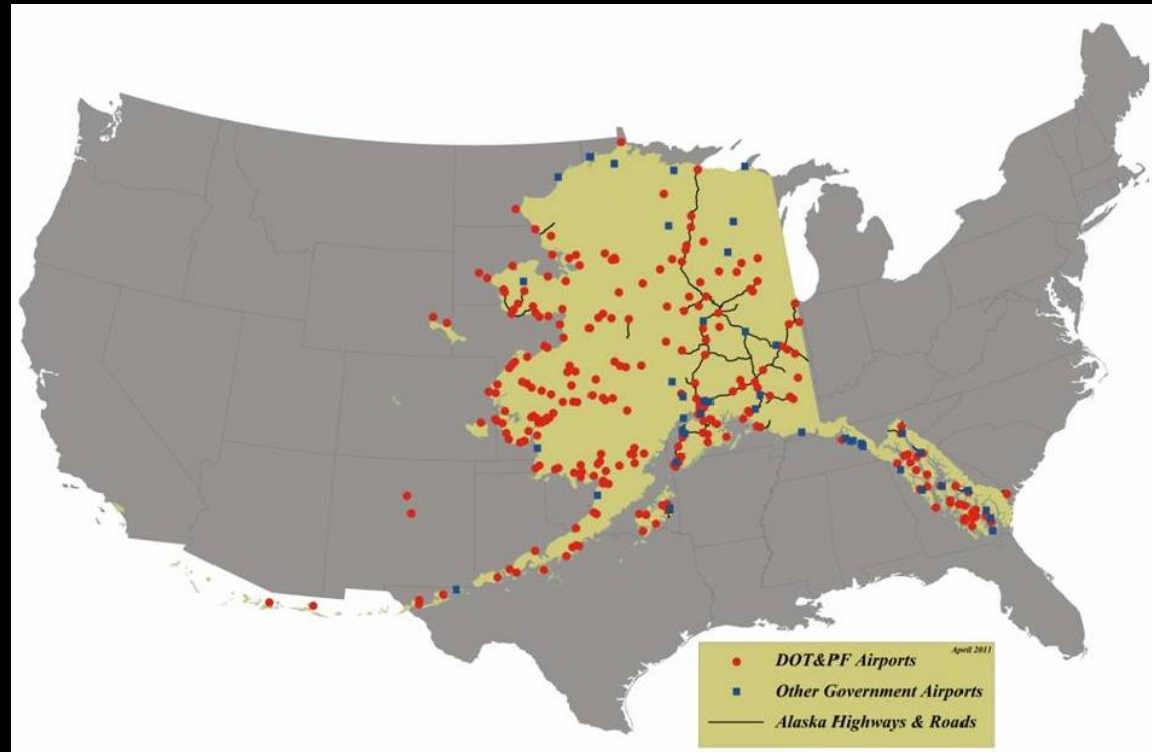
- Created 1950's
- Never met National Map Accuracy Standards;
- No statewide digital maps
- Widely considered grossly inaccurate and incapable of supporting modern practices





PROPER PERSPECTIVE

- 586,412 square miles
- 1,518,880 Km²
- 43,000 miles of coastline

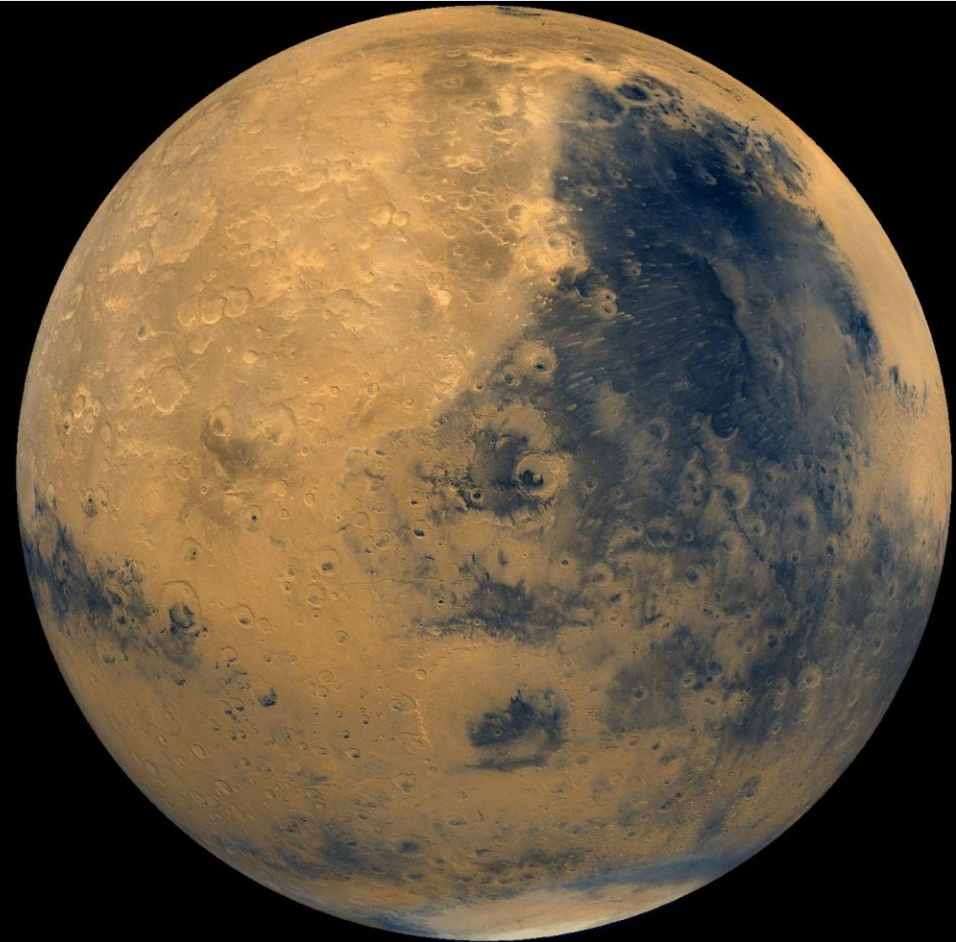




AK STATUS 2010

MARS:

- More accurately, more extensively, and more recently mapped than Alaska
- 20 m/pixel resolution
- NASA Viking missions





2010 IfSAR COLLECTION

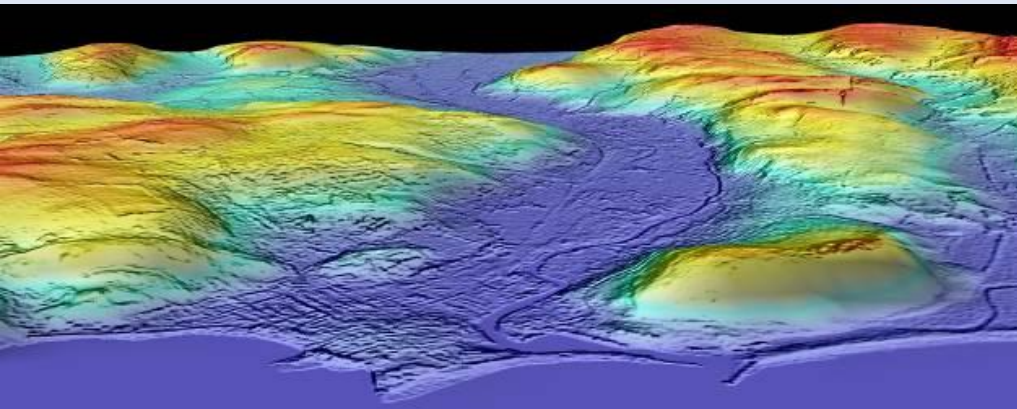
- 157,000 Km² contracted collected & processed
- 50,603 Km² coincidental collect
- 28,113 Km² coincidental collect processed
- +/- 90,000 gallons jet fuel



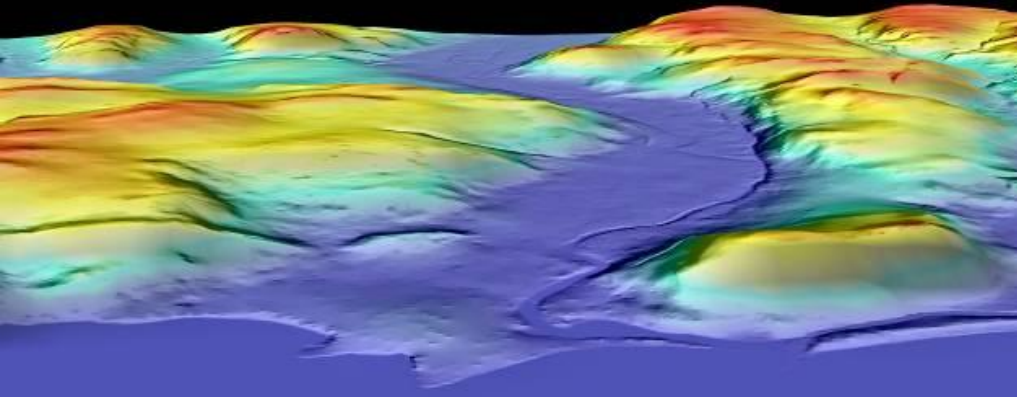
Fugro GeoSAR (Gulfstream) Fairbanks, AK 2010



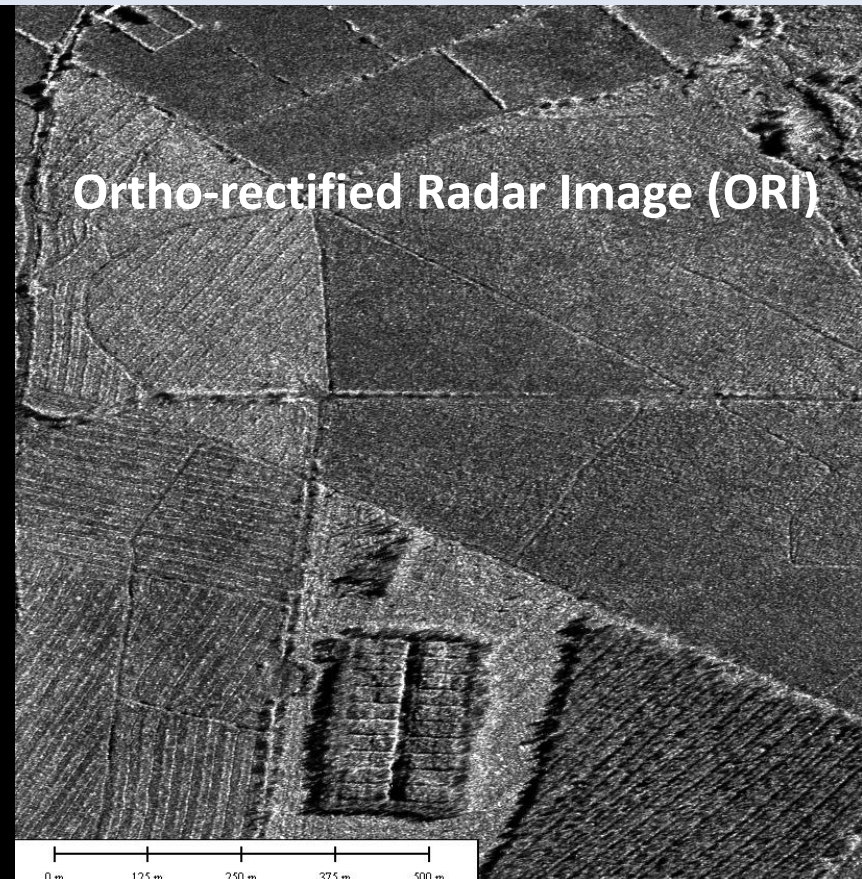
DELIVERABLES



DSM Digital Surface Model



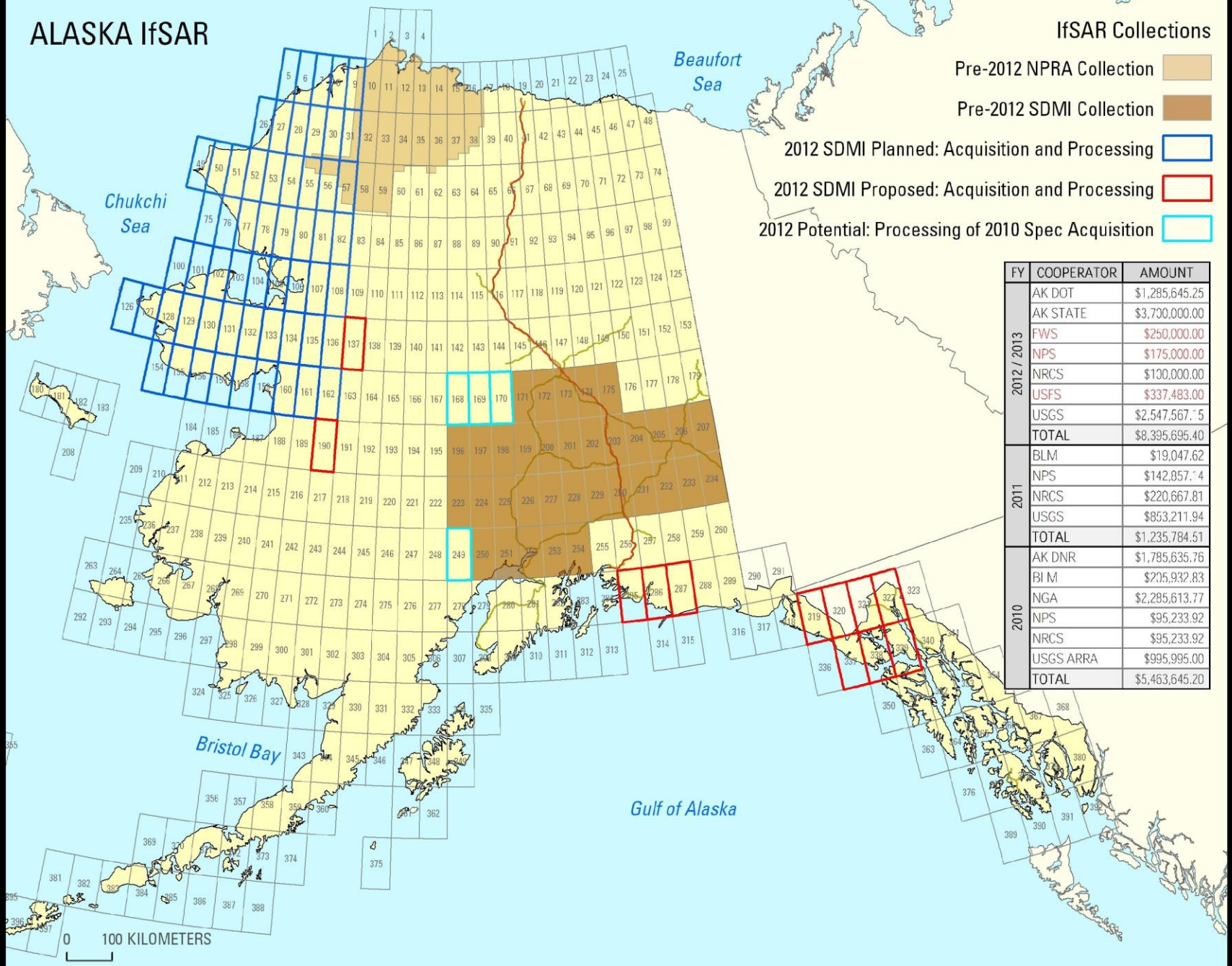
DTM Digital Terrain Model (Bare Earth)



Ortho-rectified Radar Image (ORI)

Radar images may be the only imagery available in areas of perpetual cloud cover

ALASKA IfSAR



IfSAR Collections

- Pre-2012 NPRA Collection
- Pre-2012 SDMI Collection
- 2012 SDMI Planned: Acquisition and Processing
- 2012 SDMI Proposed: Acquisition and Processing
- 2012 Potential: Processing of 2010 Spec Acquisition

FY	COOPERATOR	AMOUNT
2012 / 2013	AK DOT	\$1,285,645.25
	AK STATE	\$3,730,000.00
	FWS	\$250,000.00
	NPS	\$175,000.00
	NRCS	\$130,000.00
	USFS	\$337,483.00
	USGS	\$2,547,567.75
TOTAL	\$8,395,695.40	
2011	BLM	\$19,047.62
	NPS	\$142,857.74
	NRCS	\$220,667.81
	USGS	\$853,211.94
TOTAL	\$1,235,784.51	
2010	AK DNR	\$1,785,635.76
	BIM	\$205,932.83
	NGA	\$2,285,613.77
	NPS	\$95,233.92
	NRCS	\$95,233.92
	USGS ARRA	\$995,995.00
TOTAL	\$5,463,645.20	

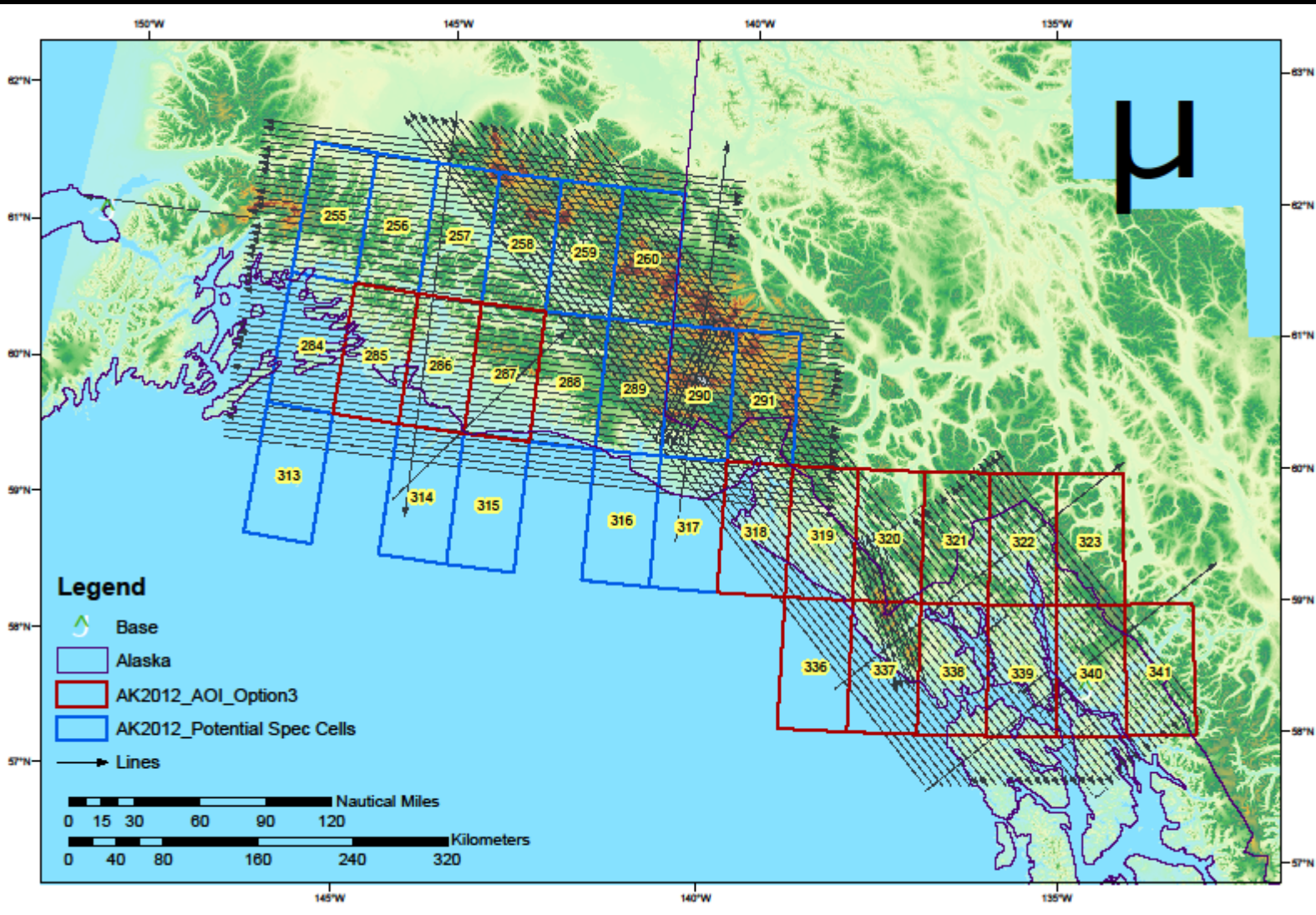


AK IfSAR STATUS 2012

FISCAL YEAR	STATE	FEDERAL	TOTAL	PERCENT FEDERAL PARTICIPATION	ACQUIRED	CUMULATIVE COMPLETED	REMAINING	PERCENT OF STATE COMPLETE
	(Dollars in millions)				(Area in square kilometers)			
2010	\$1.78	\$3.67	\$5.45	67%	157,434	249,790	1,269,010	16.45%
2011	\$0.00	\$1.23	\$1.23	100%	28,113	277,903	1,240,897	18.30%
2012	\$1.29	\$3.41	\$4.70	73%	226,757	504,660	1,014,140	33.23%
2013	\$3.70	<i>not started</i>	\$3.70	<i>unknown</i>				
TOTAL	\$6.77	\$8.31	\$15.08M	55%				

ONE THIRD COMPLETE

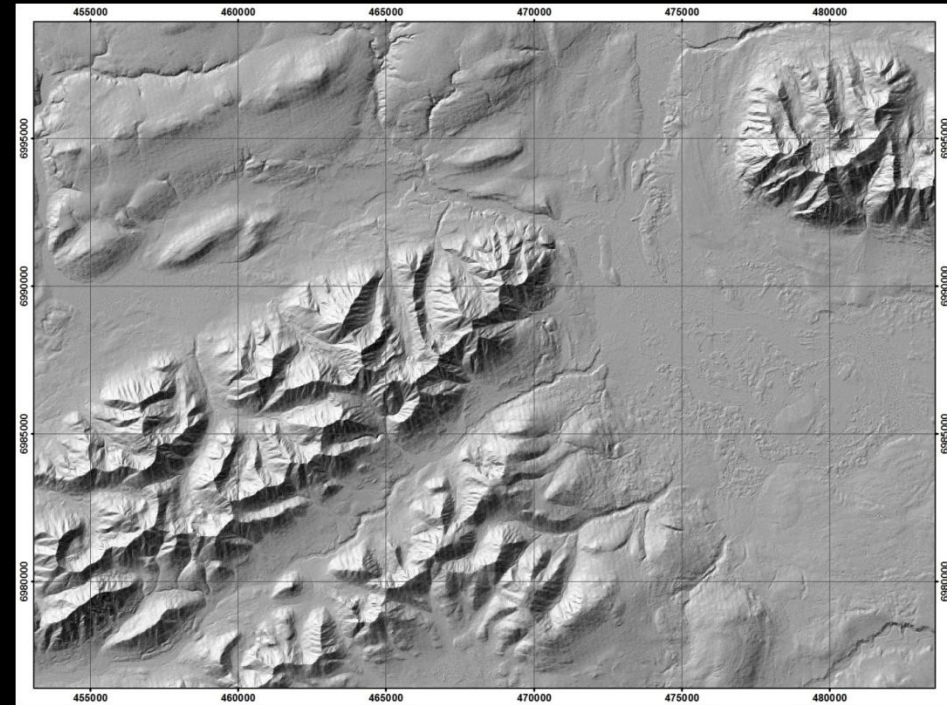
\$37.6M TO COMPLETE ELEVATION COMPONENT





2012 UNPROCESSED

- 226,757 Km² contracted for collection & processing
- 119,000 Km² anticipated coincidental collect
- \$3.8M to process coincidental

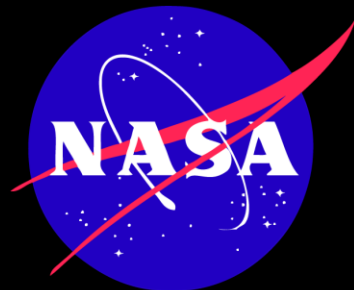


F-22 Raptor crash site Denali, AK 2010



TAIGA

Terrain &
Atmospheric
Information for
General
Aviation



An aviation Fatality occurs every two weeks in
Alaska on average. +/-50% CFIT



SUPPORT

LETTERS OF SUPPORT GREATLY APPRECIATED

SDMI
Nick Mastrodicasa
Dept Of Transportation
4451 Aircraft Dr., Suite H
Anchorage, AK 99502



FINAL BOARDING CALL

