

**U.S. Department of Energy**  
National Energy Technology Laboratory  
Office of Public Affairs  
P.O. Box 10940  
Pittsburgh, PA 15236-0940

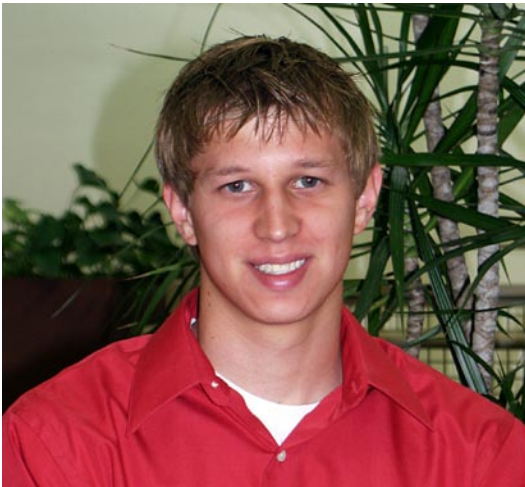


**U.S. Department of Energy**  
National Energy Technology Laboratory  
Office of Public Affairs  
P.O. Box 880  
Morgantown, WV 26507-0880

## ***NETL* REPORTS:**

News Media Contact:  
Joe Culver, 304/285-4822 or 304/282-7381

For Immediate Release  
July 1, 2009



Micahel Hoffman, a senior at West Virginia University, was selected as a research associate at the National Energy Technology Laboratory (NETL) under the U.S. Department of Energy's Oak Ridge Institute for Science & Education (ORISE) program. Hoffman is completing the 10-week summer appointment at NETL's Morgantown, W.Va., research site. NETL also has major research facilities in Pittsburgh, Pa., and Albany, Ore.

A native of New Freeport, Pa., Hoffman is pursuing a bachelor's degree in industrial and management systems engineering. He is working with his mentor, NETL researcher Chris Guenther, on a project employing the analysis of fiber optic and high speed video data to examine how the particles in a circulating fluidized bed travel and interact with the gas, group together to form clusters and extract the speed at which these particles and clusters travel within the bed. The work has potential for the characterization of the large-scale circulating fluidized bed at NETL and provides model validation data for multi-phase computational fluid dynamic models. Circulating fluidized bed technology is one of the technologies being considered by the Department of Energy for coal-fueled, near-zero emissions power plants.

The ORISE program offers summer appointments to undergraduate students, post-graduates, graduate students, post-doctoral researchers, and university professors to work part-time or full-time at NETL. Mentored by scientists and researchers, the research associates are assigned specific projects intended to teach them how to use their skills and qualifications to solve energy-related problems. The appointment provides research associates the opportunity to develop their professional, technical, leadership and communication skills, while promoting careers in energy, particularly in fossil fuel research and development.

NETL is one of the U.S. Department of Energy's national laboratories. NETL – “the ENERGY lab” – focuses on America's economic prosperity, which requires secure, reliable energy supplies at sustainable prices. Three overarching issues characterize the energy situation in the United States. They are energy affordability, supply security, and environmental quality. The Department of Energy's only government-owned, government-operated national lab, NETL is a research and technology center where these energy challenges converge and energy solutions emerge. NETL implements a broad spectrum of energy and environmental research and development programs through its own research staff and through funded research at other labs, universities, and industry that will return benefits for generations to come.