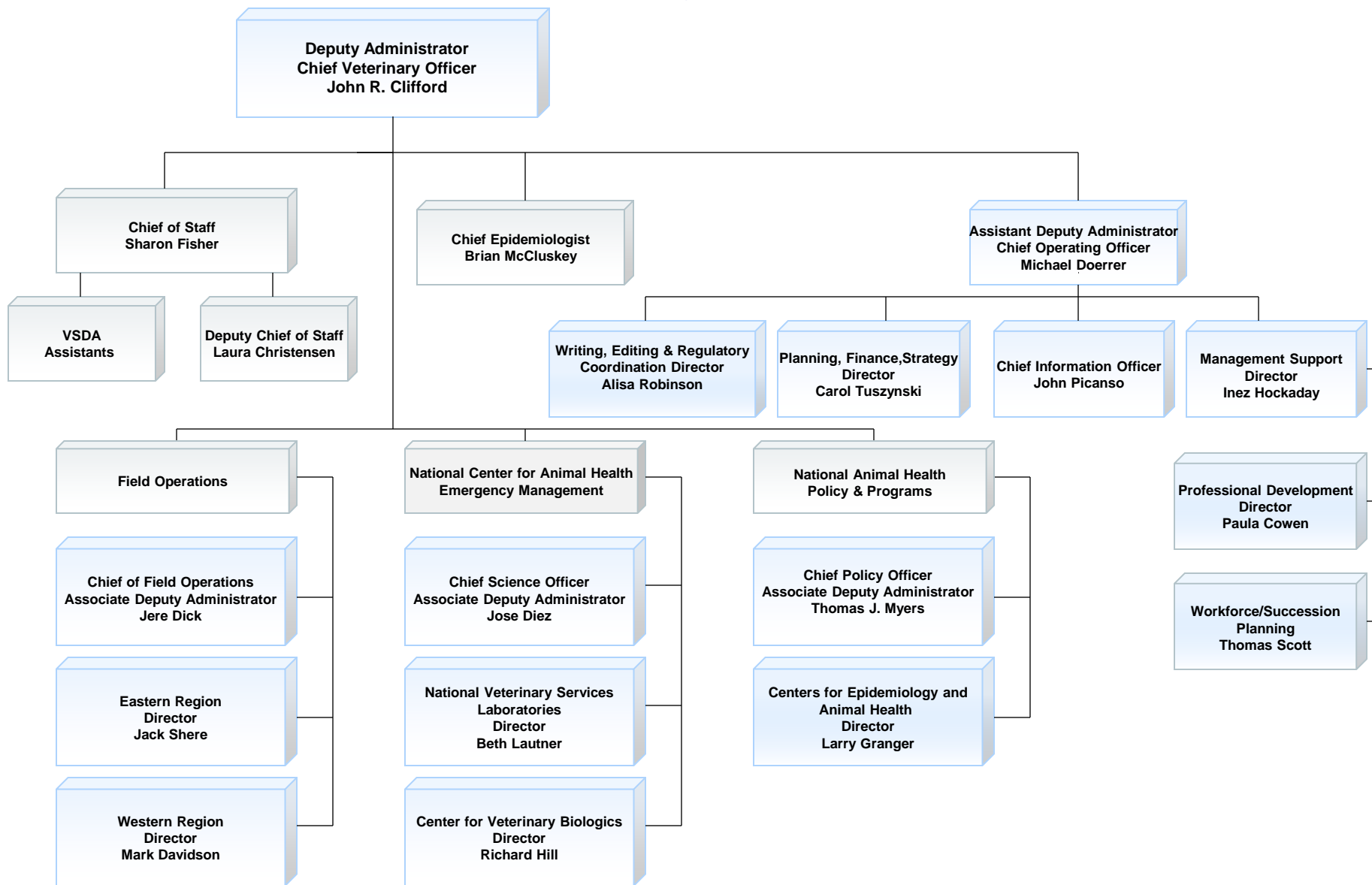
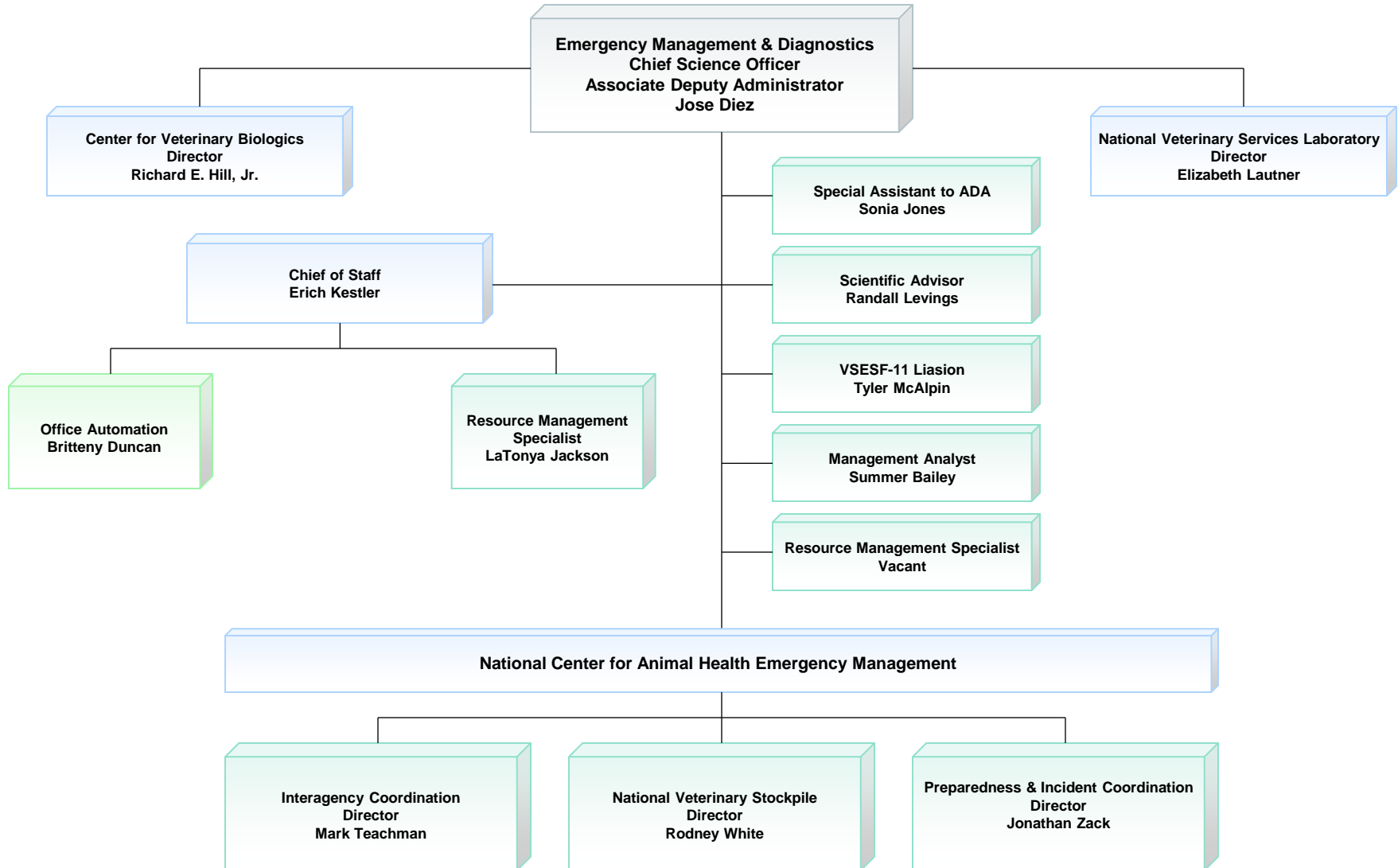


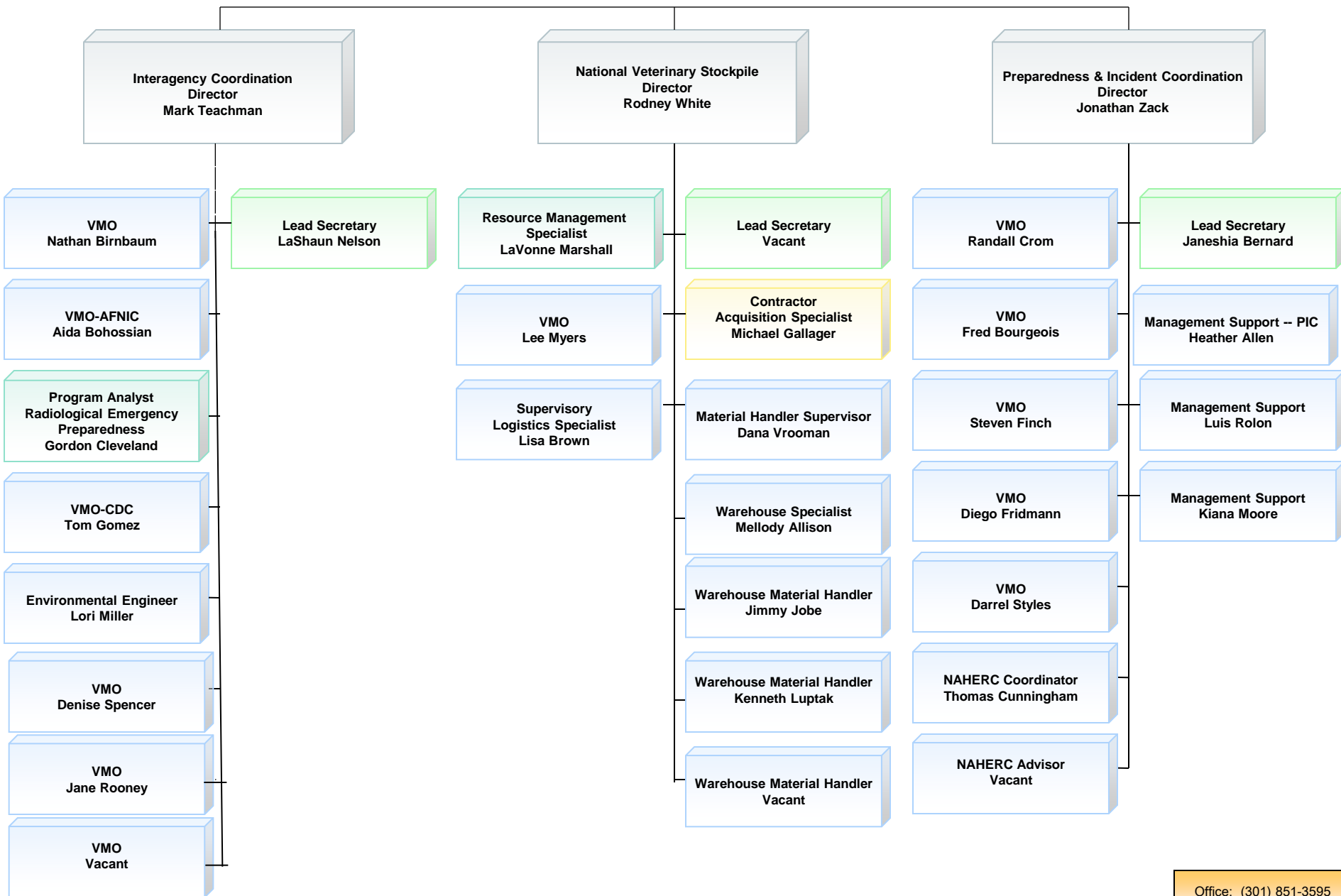
# Veterinary Services



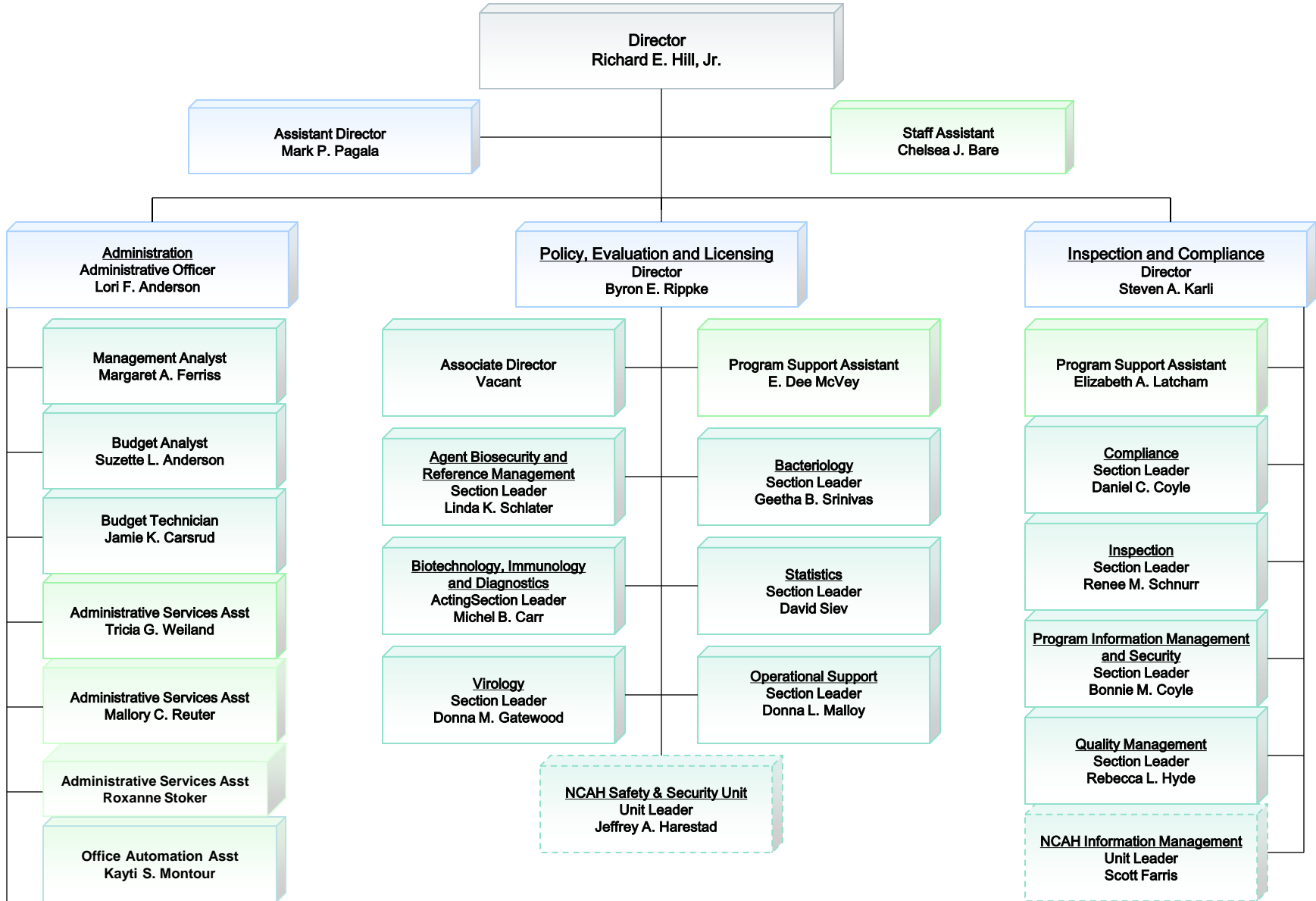
# Emergency Management and Diagnostics



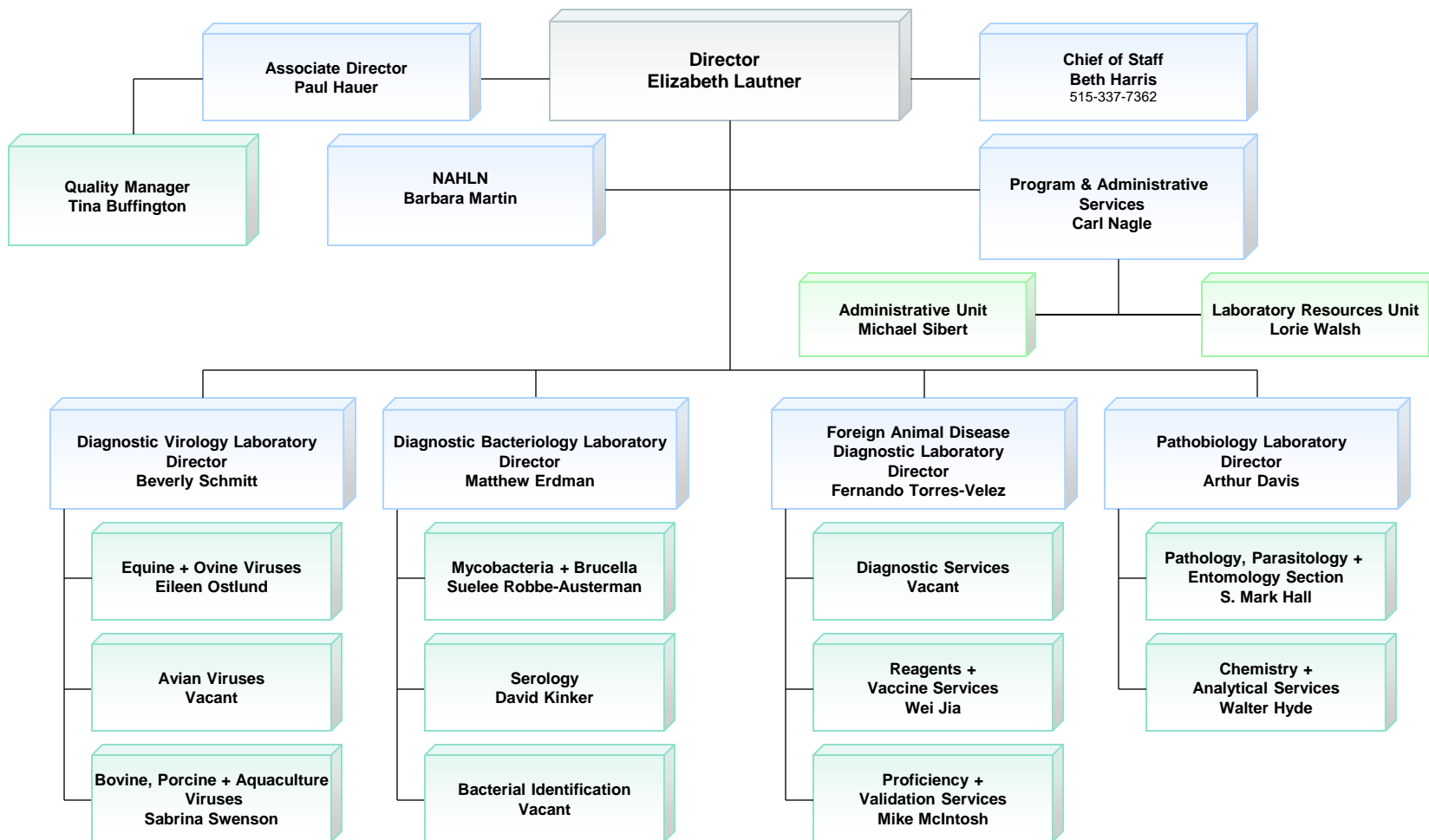
# National Center for Animal Health Emergency Management



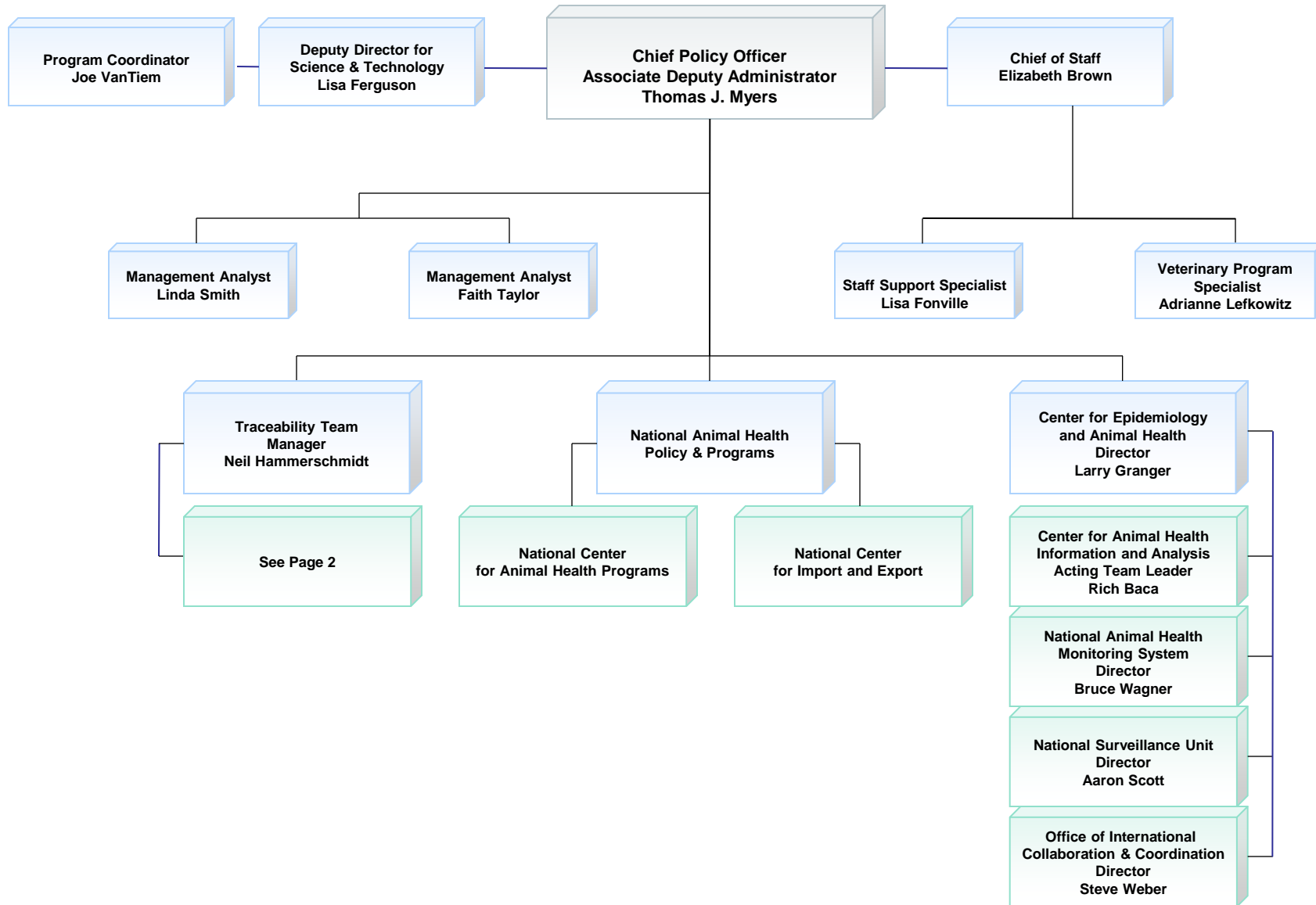
# Center for Veterinary Biologics



# National Veterinary Services Laboratories (NVSL)

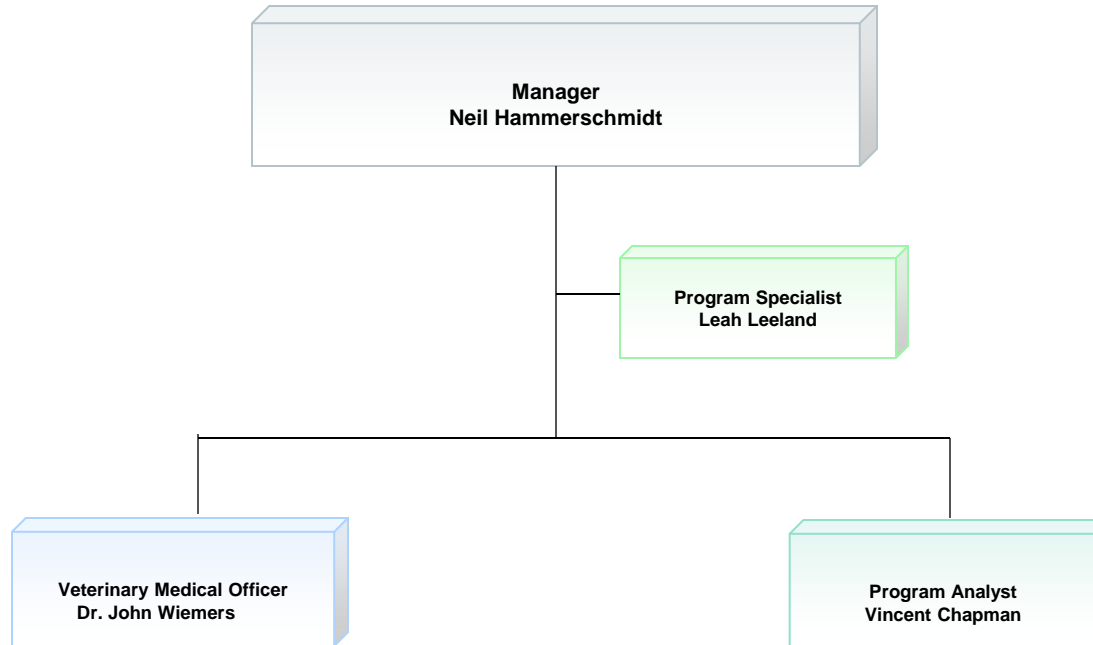


# National Animal Health Policy and Programs

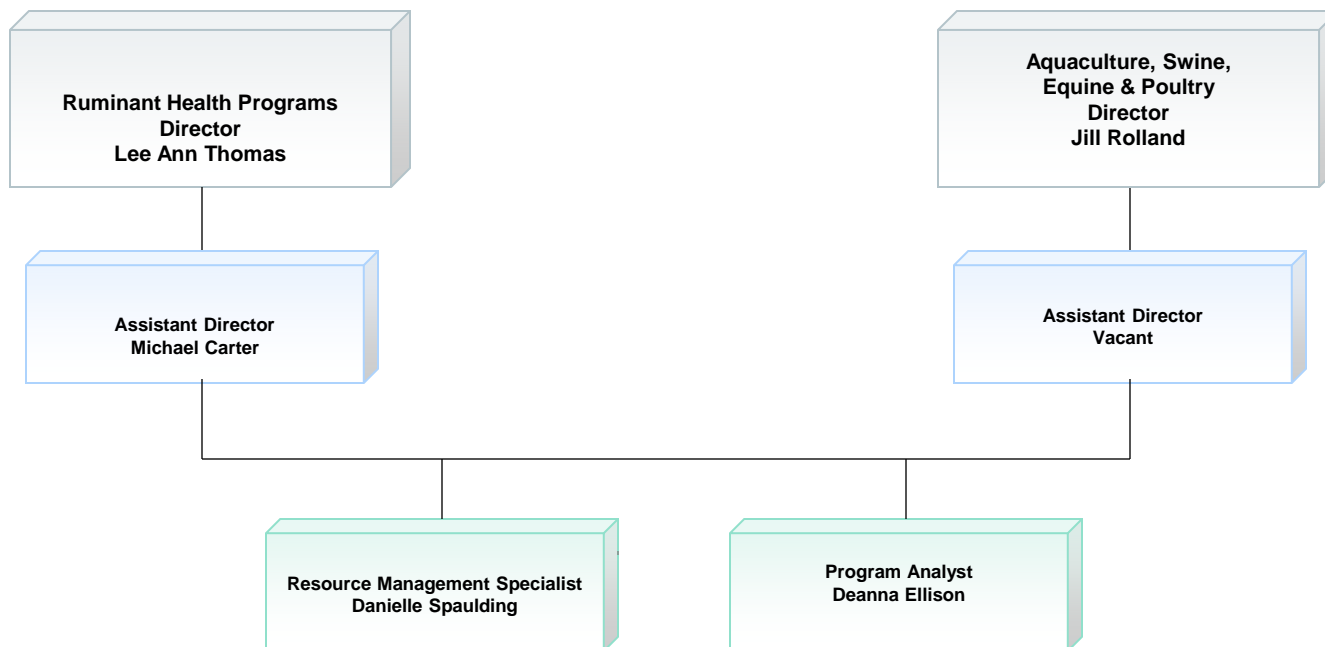


# National Animal Health Policy and Programs

## Traceability Team

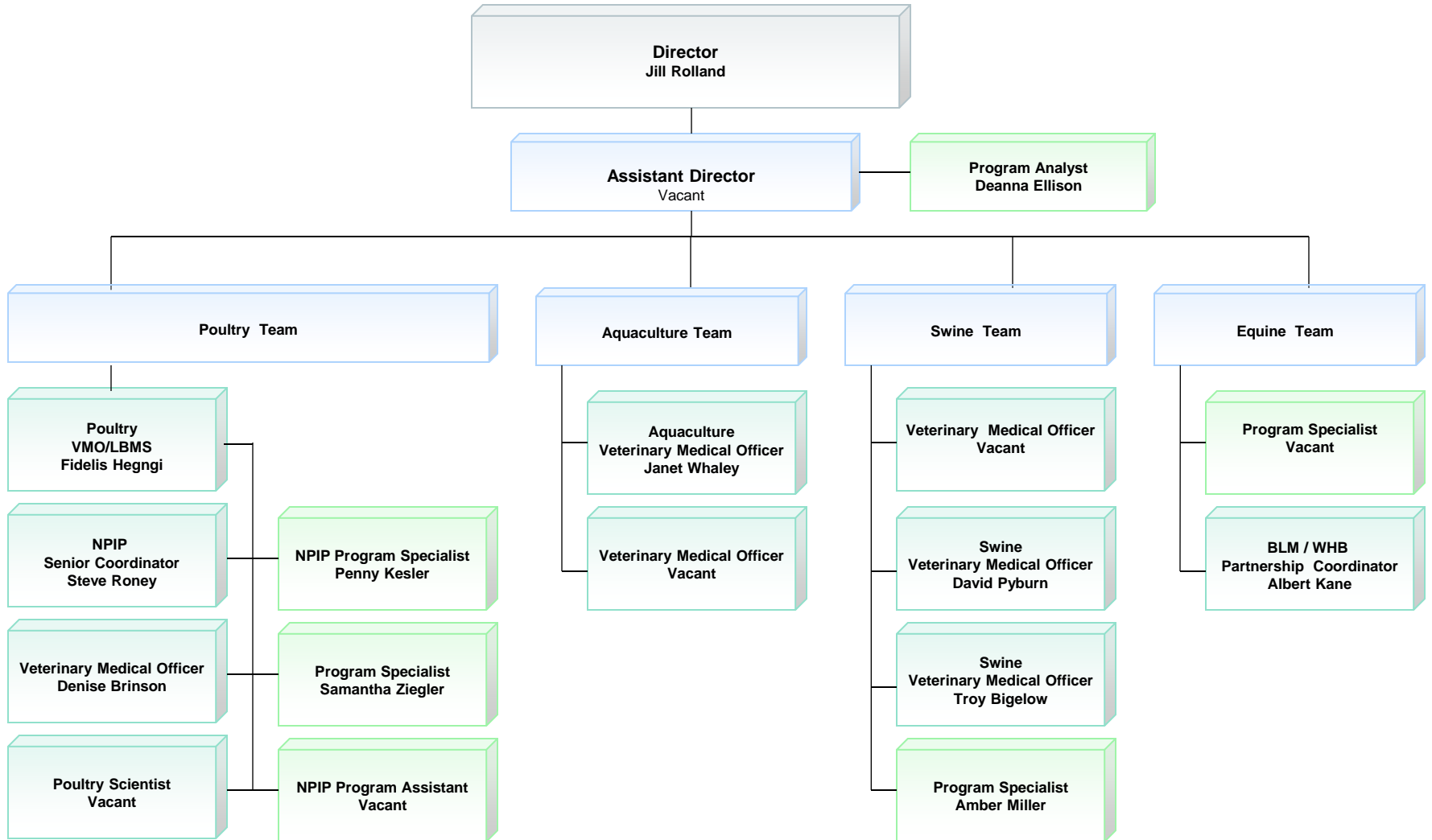


# National Center for Animal Health Programs (NCAHP)

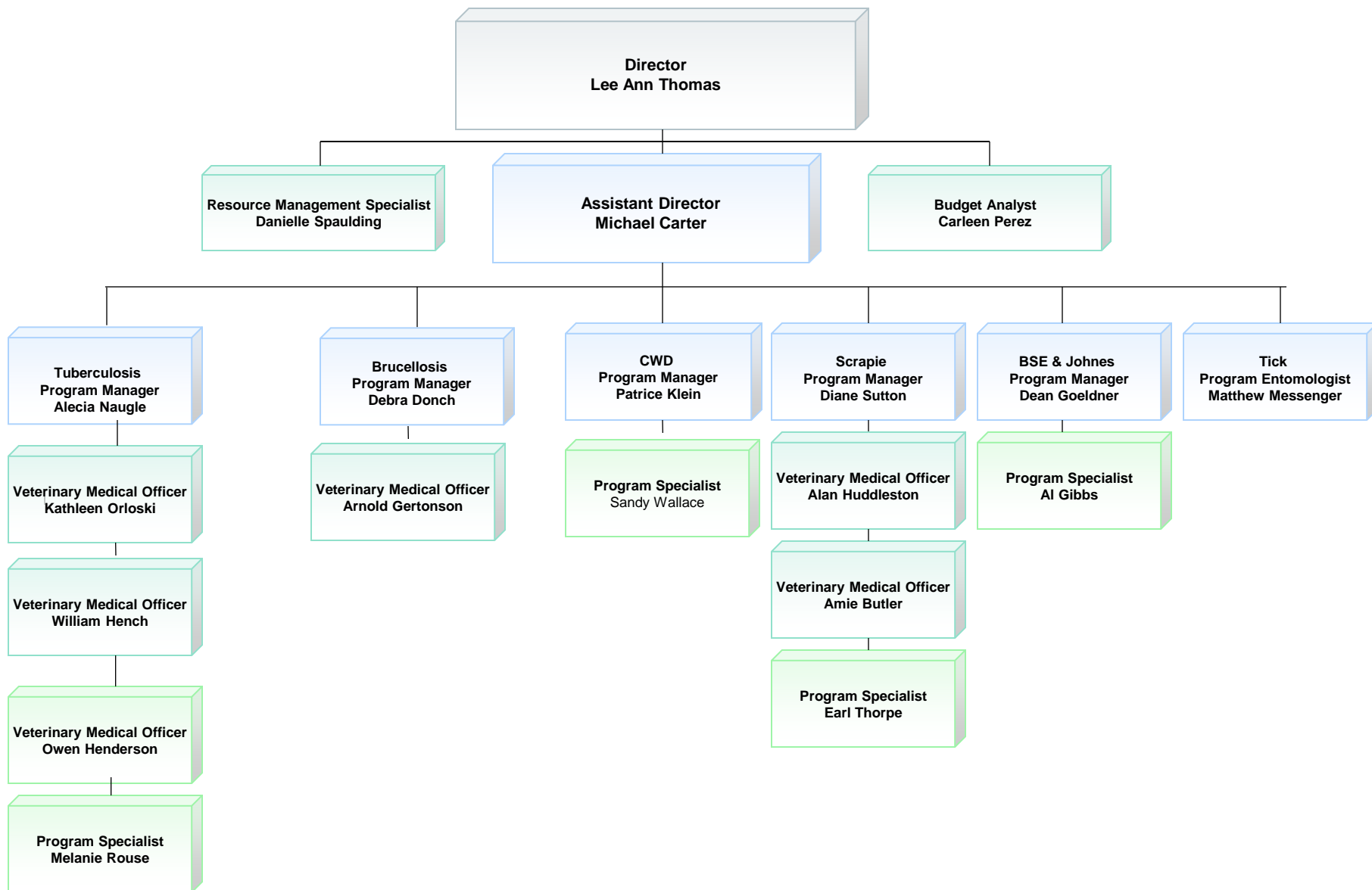




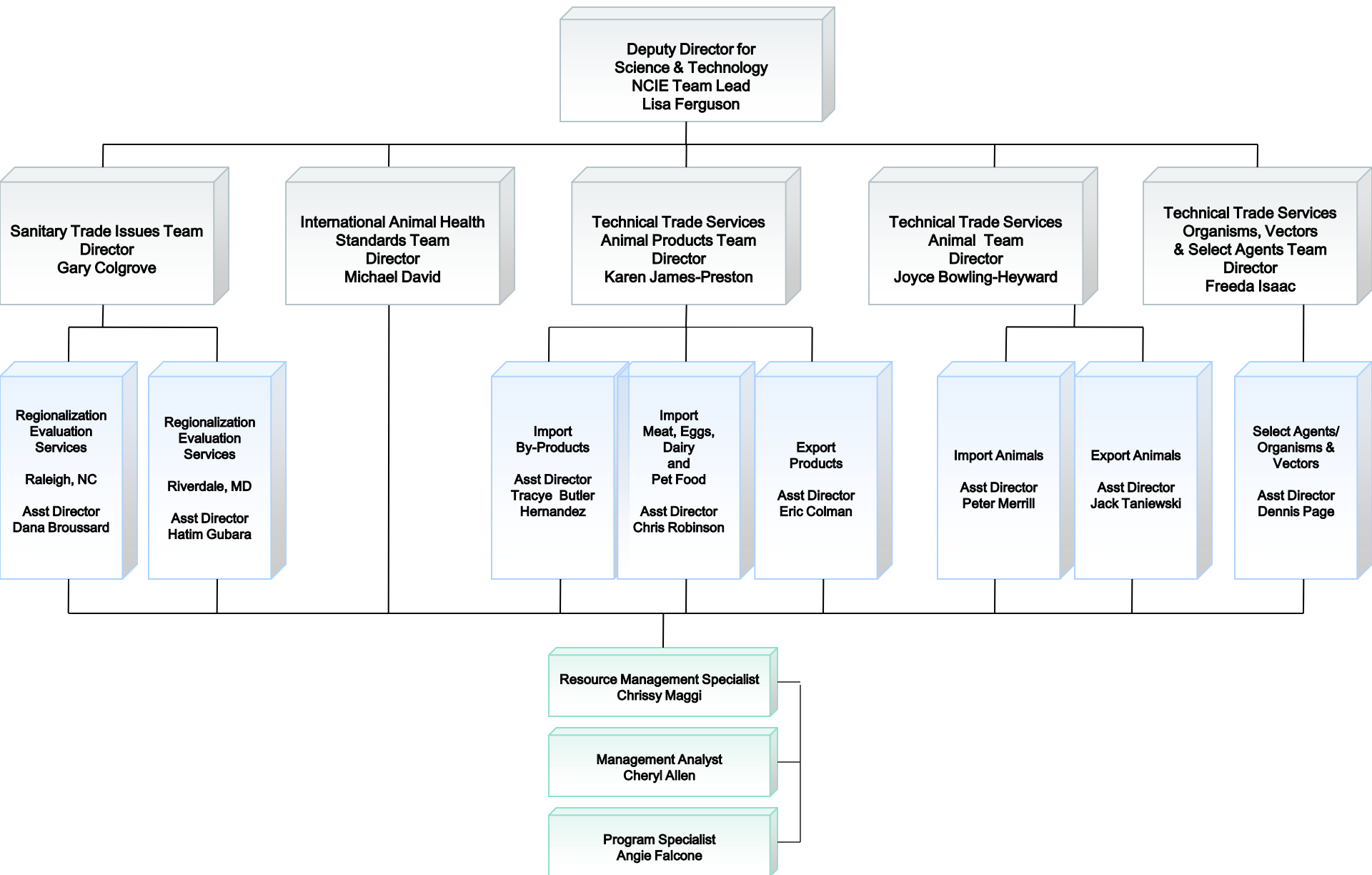
# NCAHP – Aquaculture, Swine, Equine & Poultry



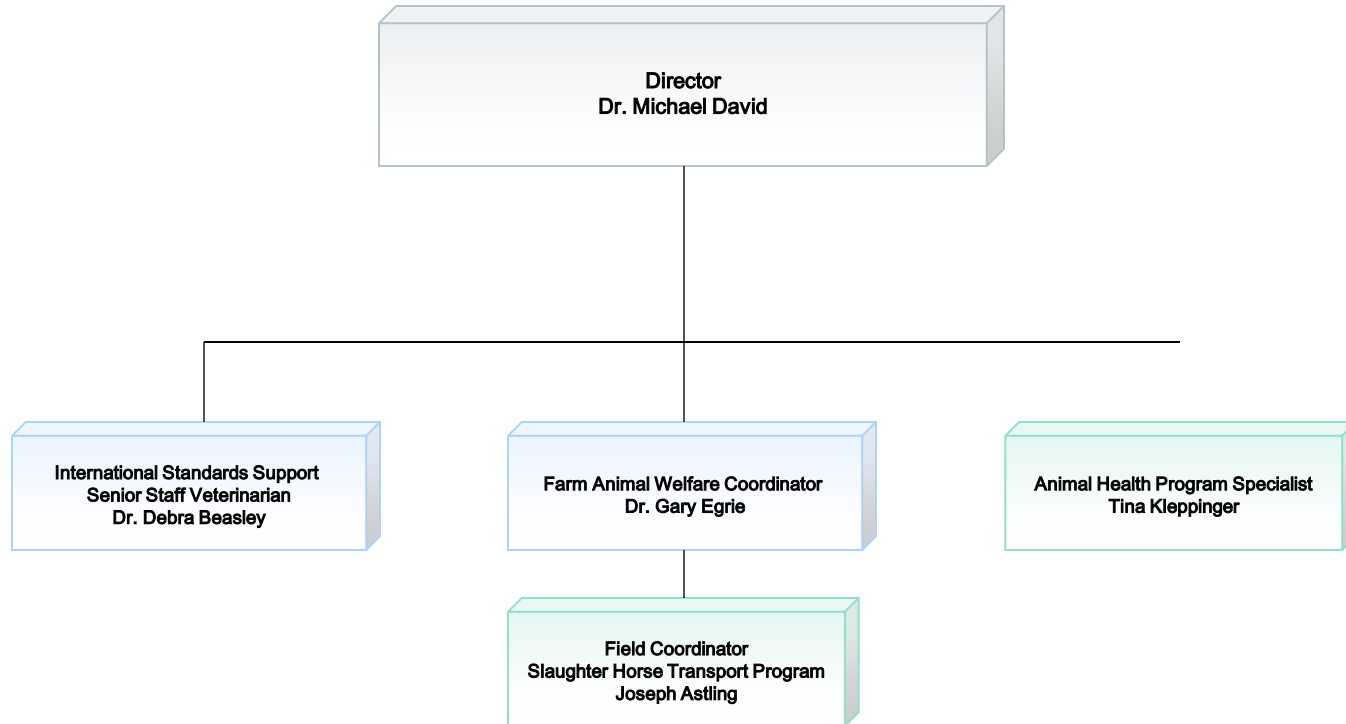
# NCAHP - Ruminant Health Program



# National Center for Import and Export (NCIE)



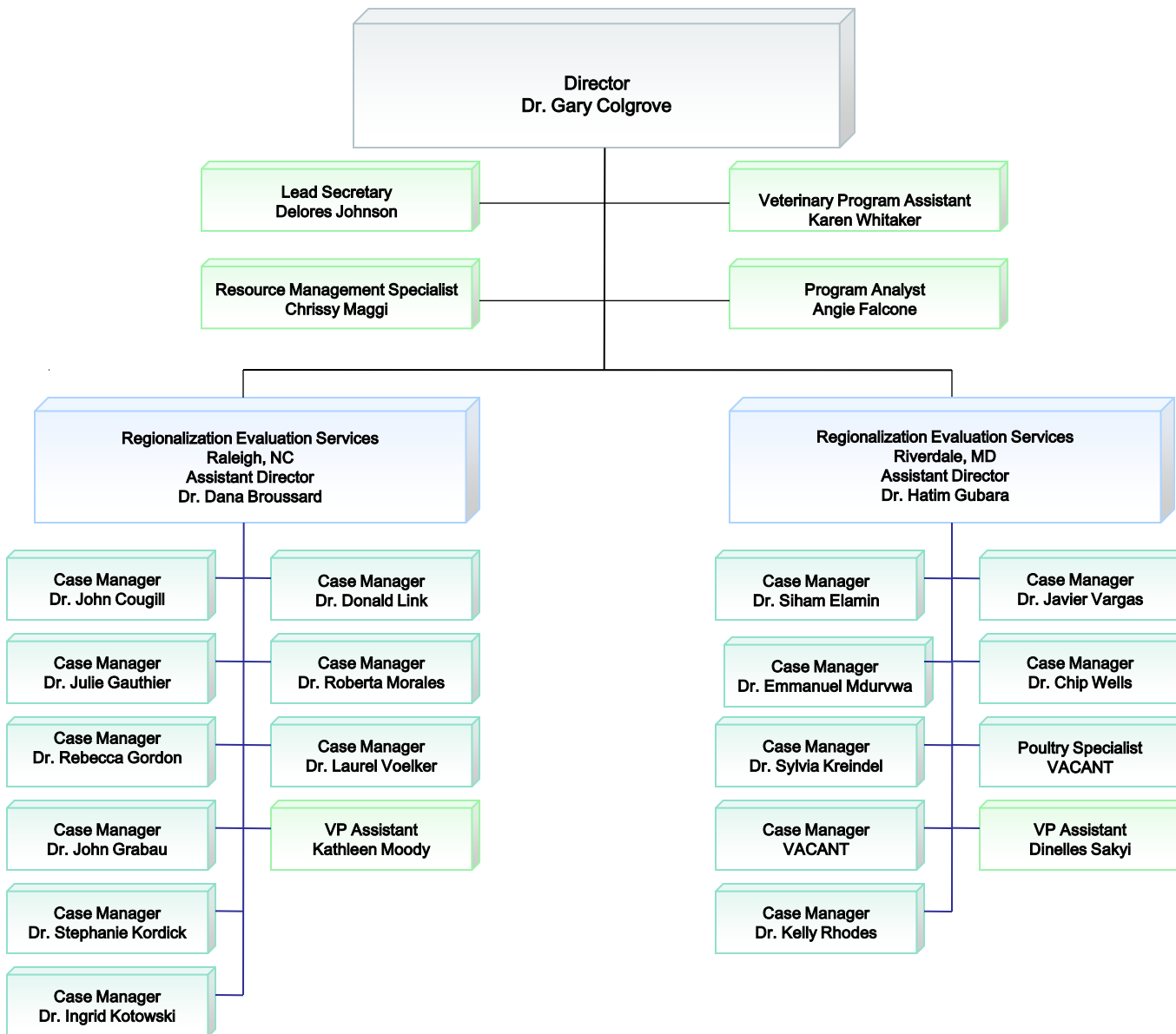
# NCIE - International Animal Health Standards Team (IAHST)



June 4, 2012 (Updated)

Office: (301) 851-3300  
Fax: (301) 734-6402

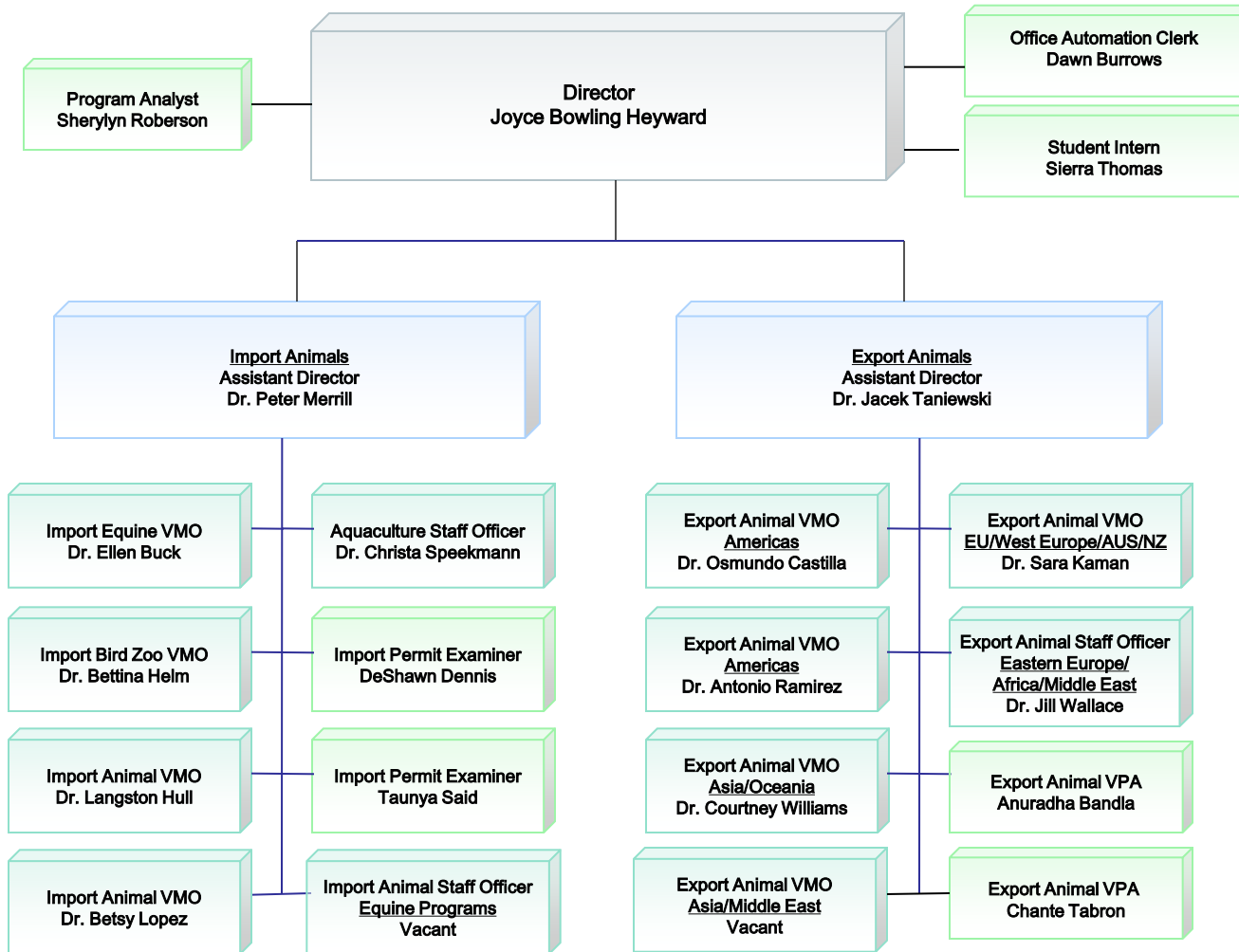
# NCIE – Sanitary Trade Issues



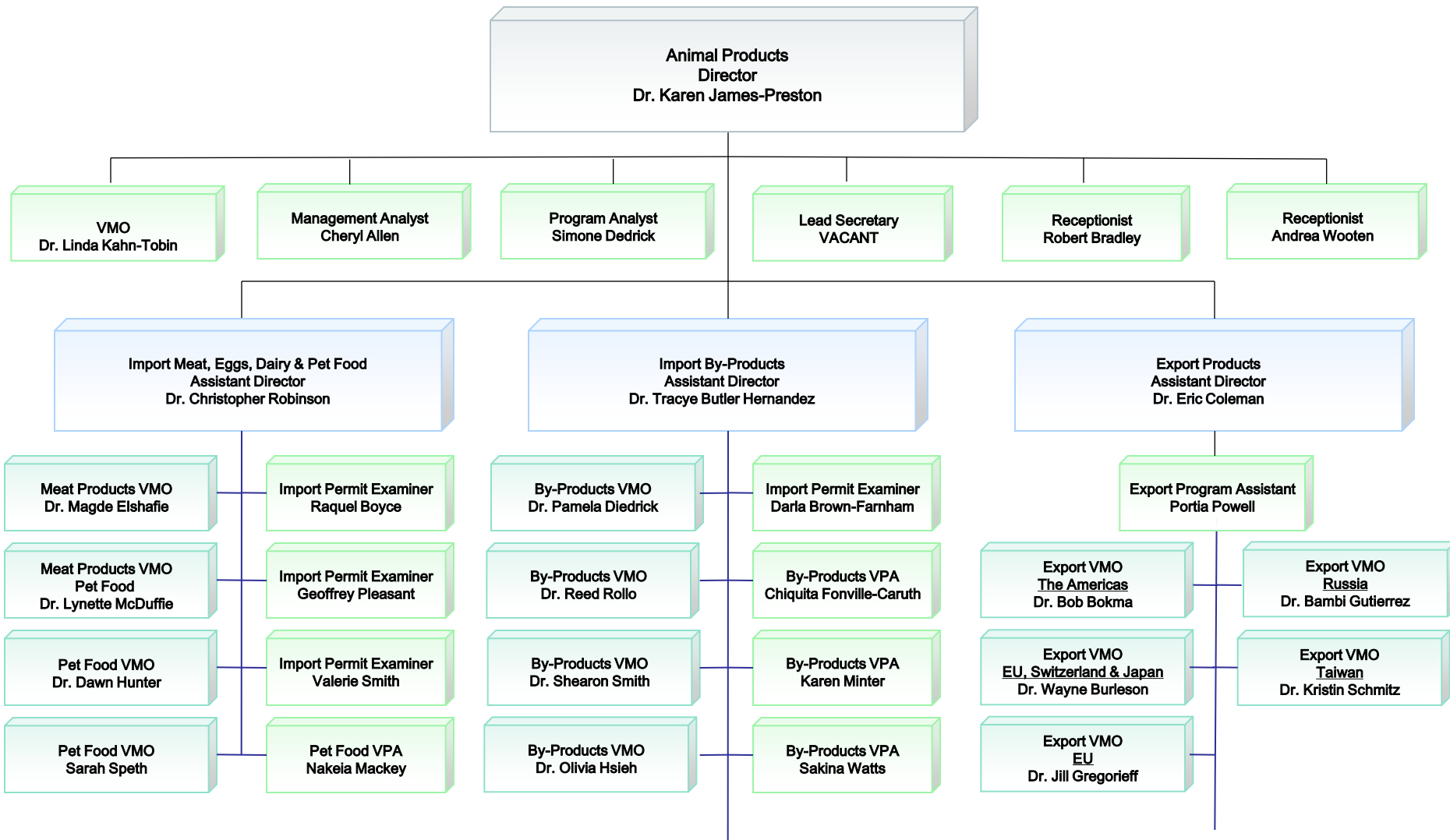
Riverdale  
Office: (301) 851-3300  
Fax: (301) 734-3222

Raleigh  
Office: (919) 855-7739  
Fax: (919) 855-7749

# NCIE – Technical Trade Services - Animals



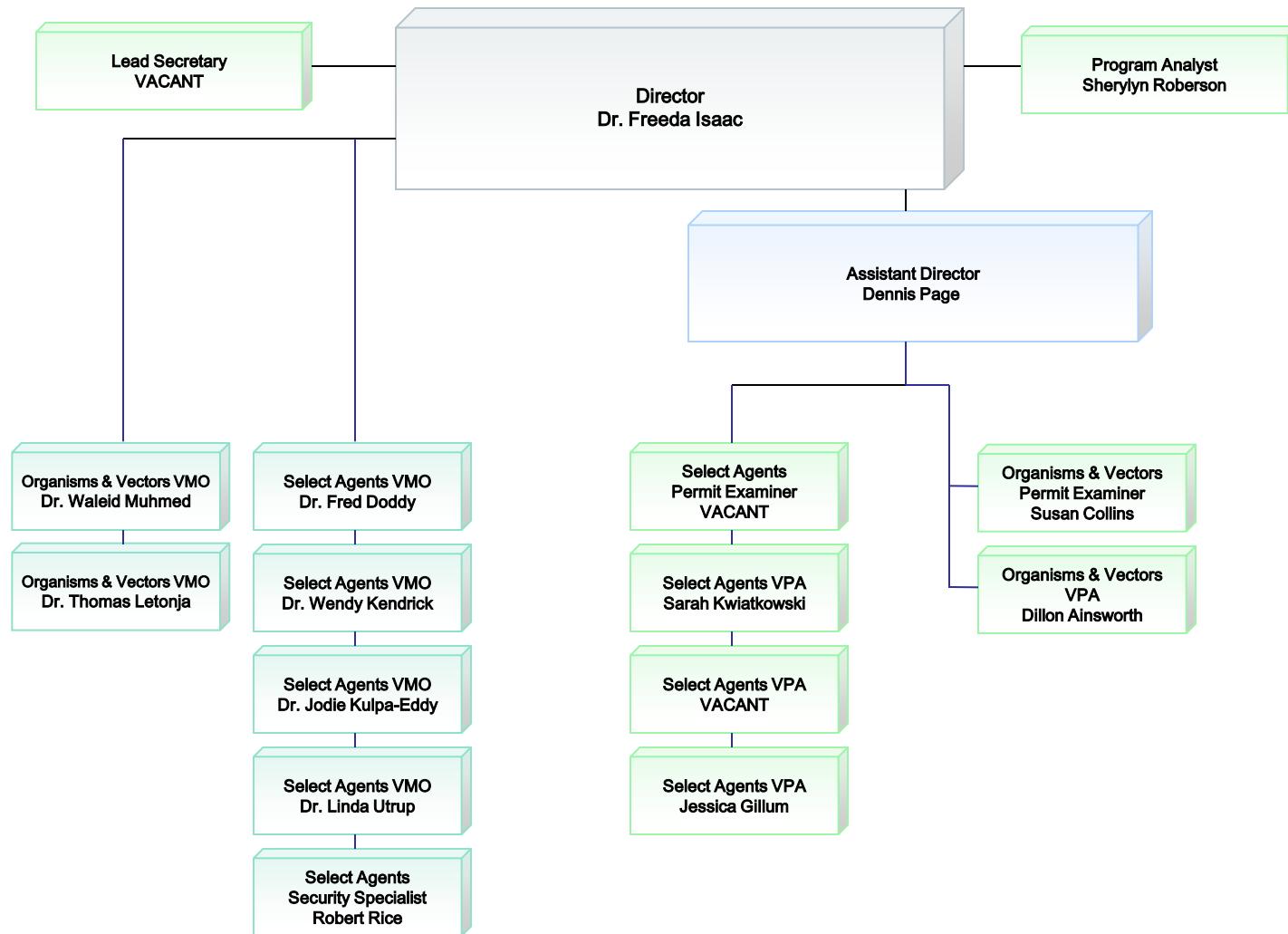
# NCIE – Technical Trade Services – Animal Products



June 4, 2012 (Updated)

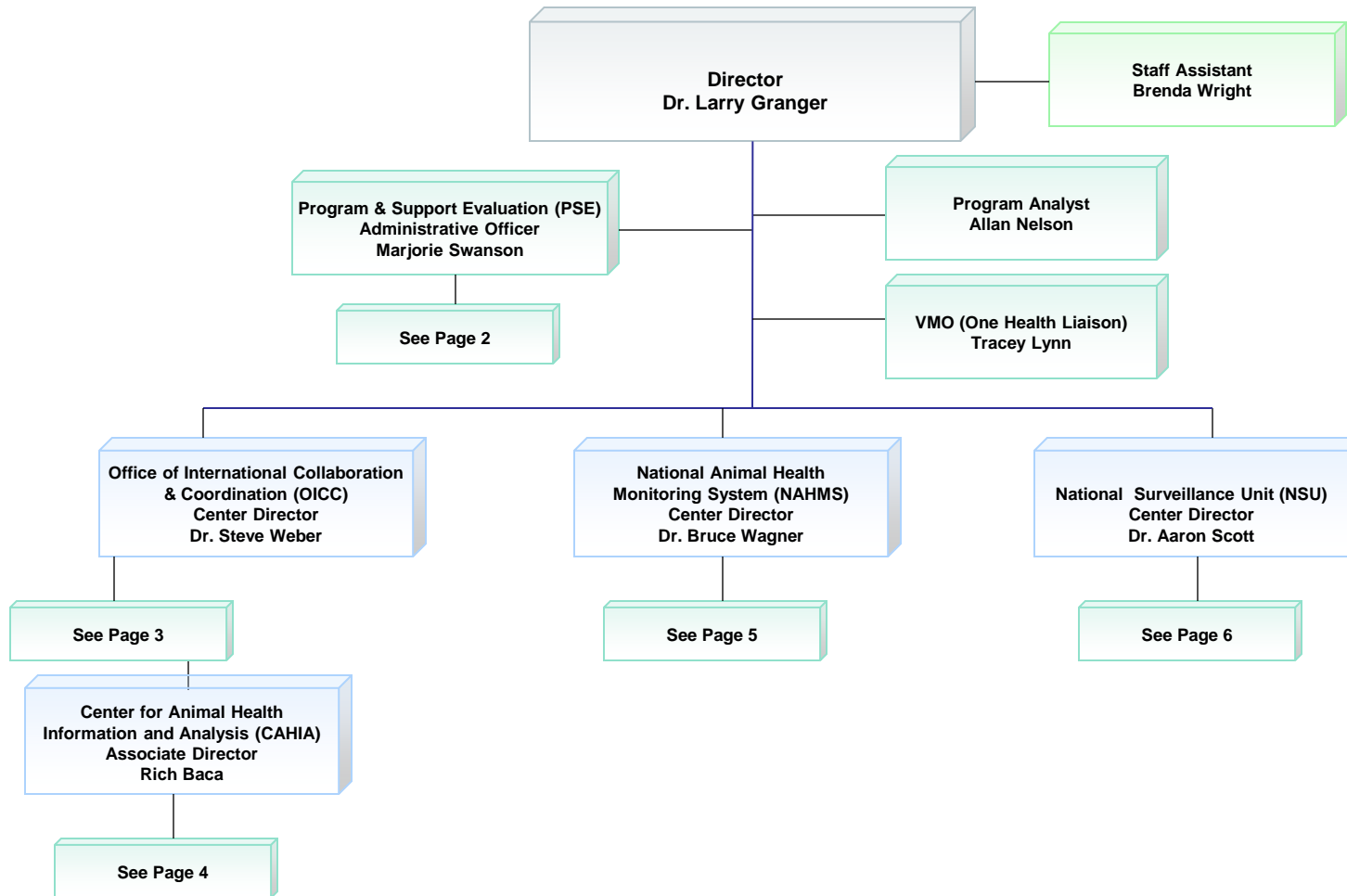
Office: (301) 851-3300  
Fax: (301) 734-3222

# NCIE – Technical Trade Services – Select Agents, Organisms & Vectors (SAO&V)



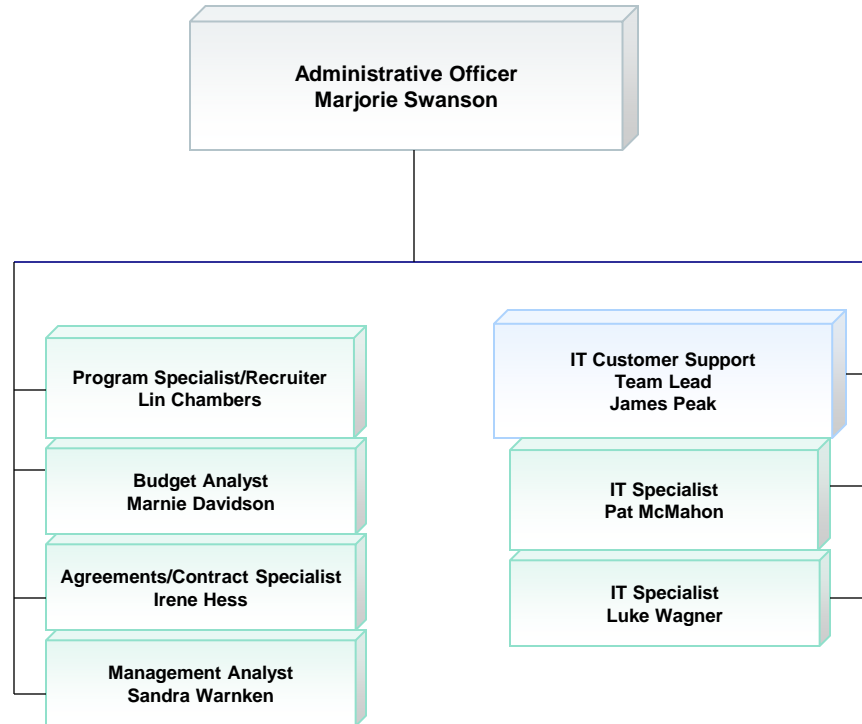


# Centers for Epidemiology and Animal Health (CEAH)



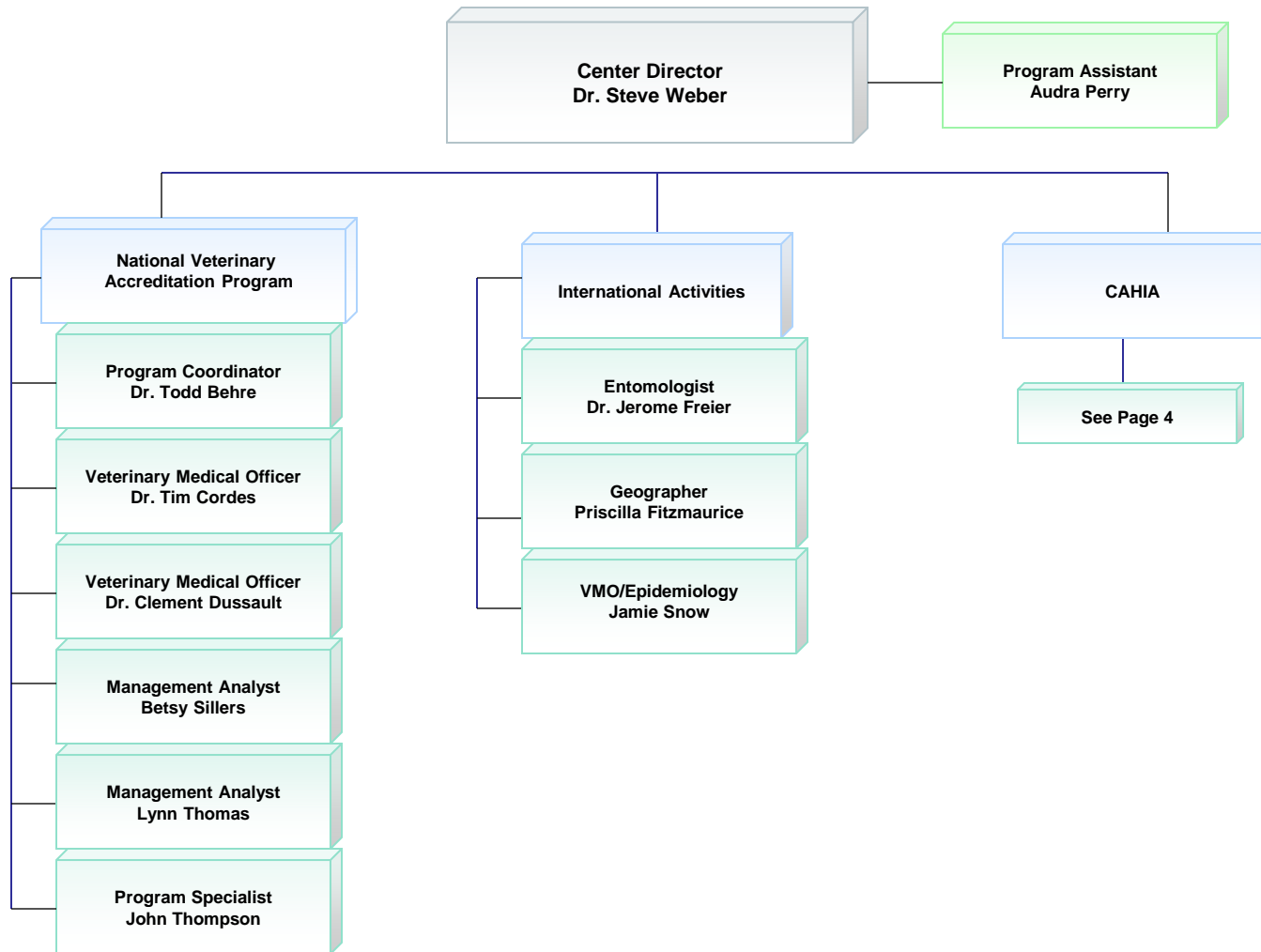
# Centers for Epidemiology and Animal Health (CEAH)

## Program Support and Evaluation (PSE)



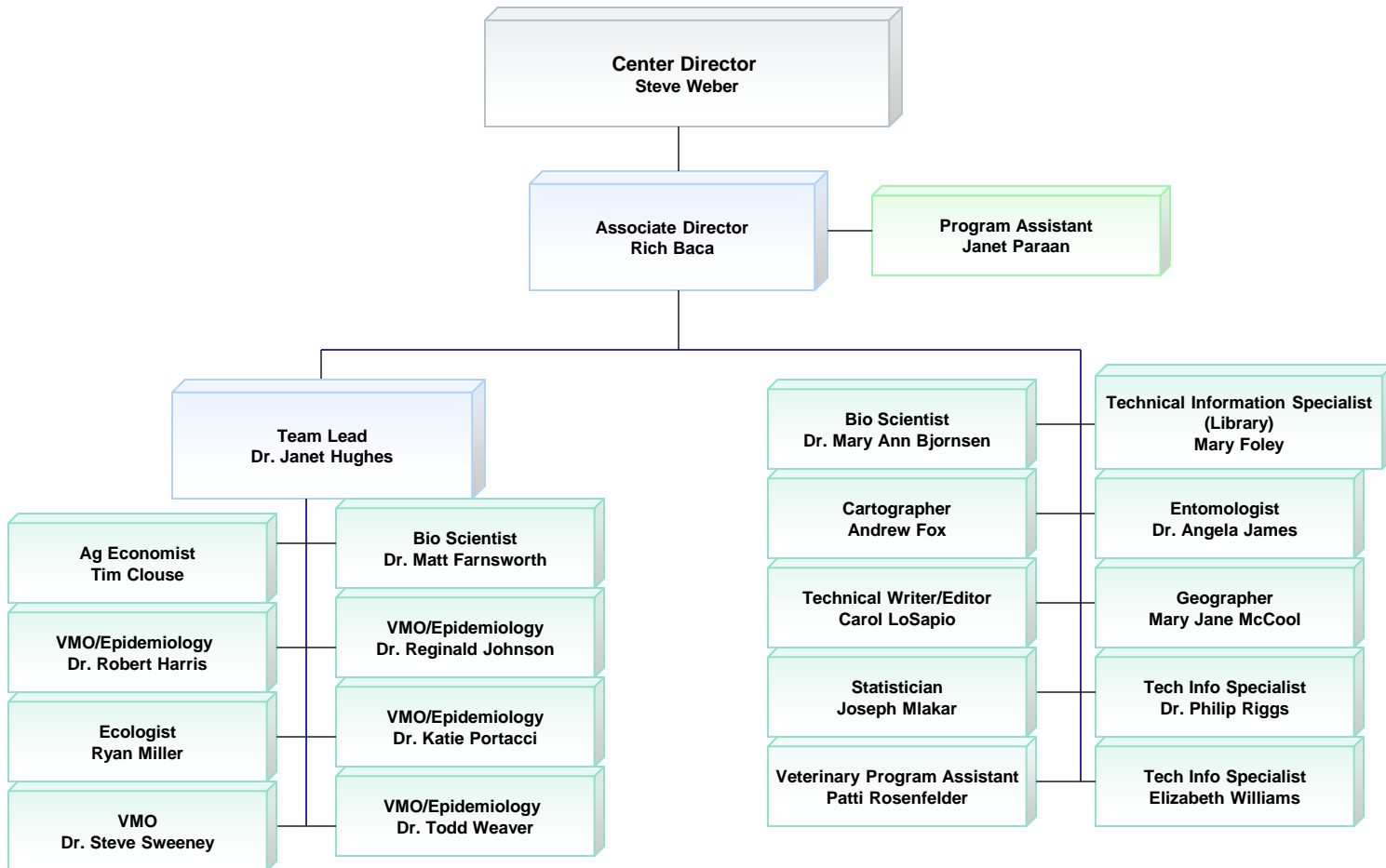
# Centers for Epidemiology and Animal Health (CEAH)

## Office of International Collaboration & Coordination (OICC)



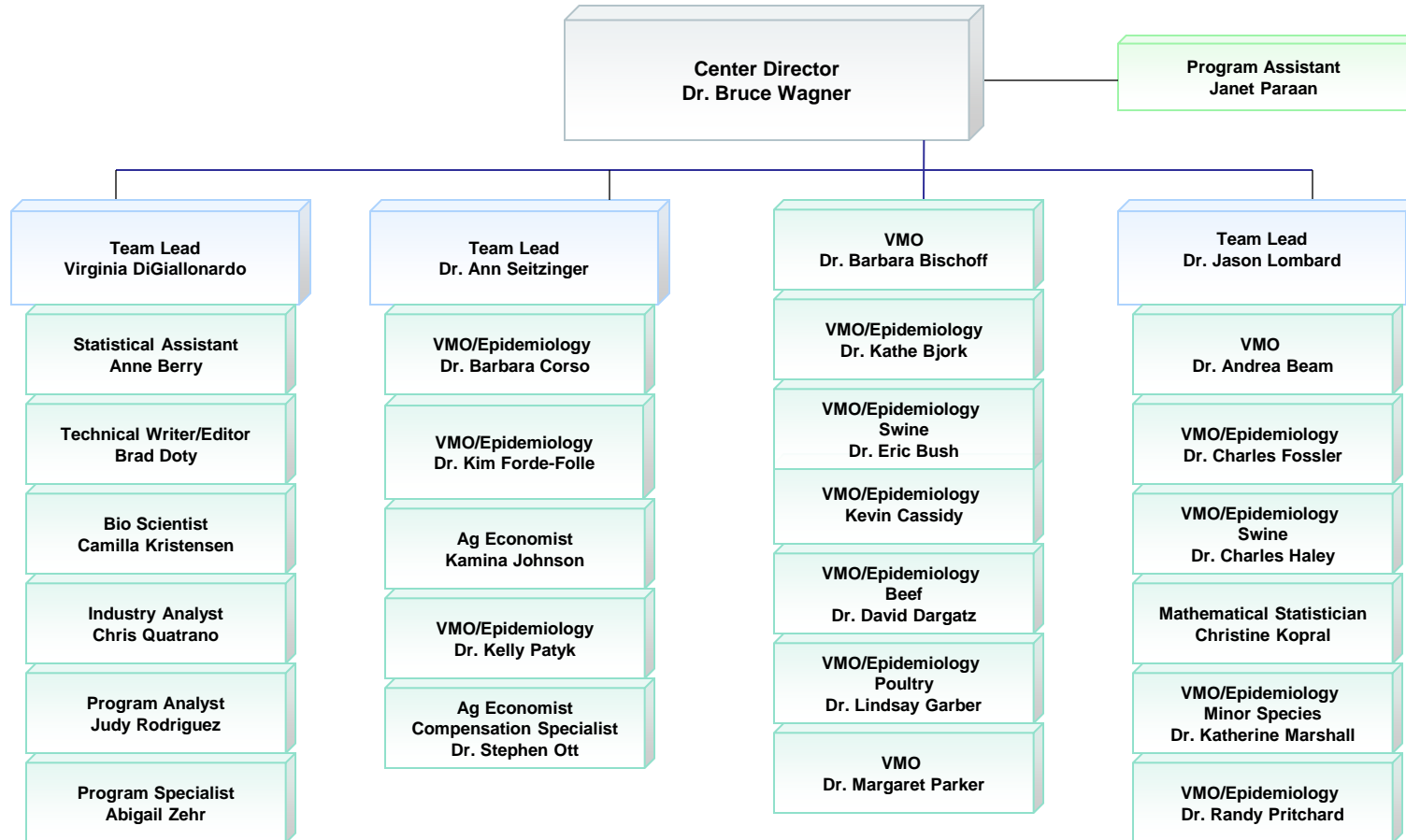
# Centers for Epidemiology and Animal Health (CEAH)

## Center for Animal Health Information & Analysis (CAHIA)



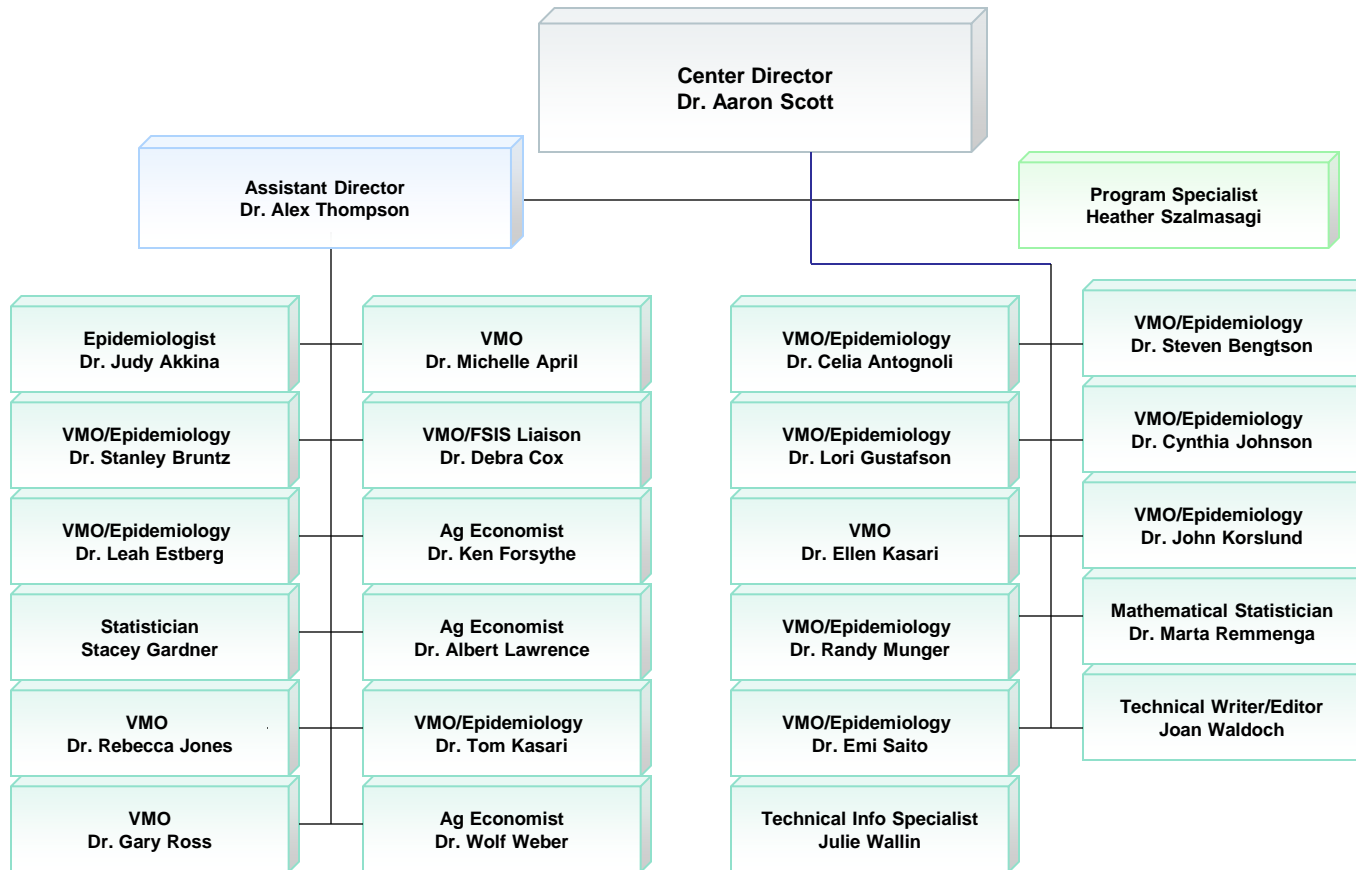
# Centers for Epidemiology and Animal Health (CEAH)

## National Animal Health Monitoring System (NAHMS)

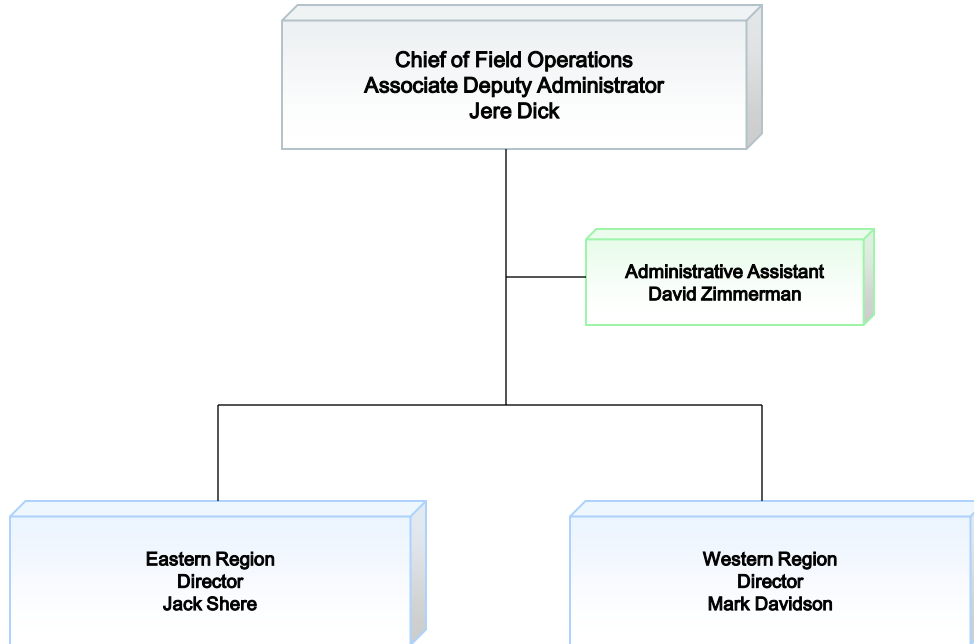


# Centers for Epidemiology and Animal Health (CEAH)

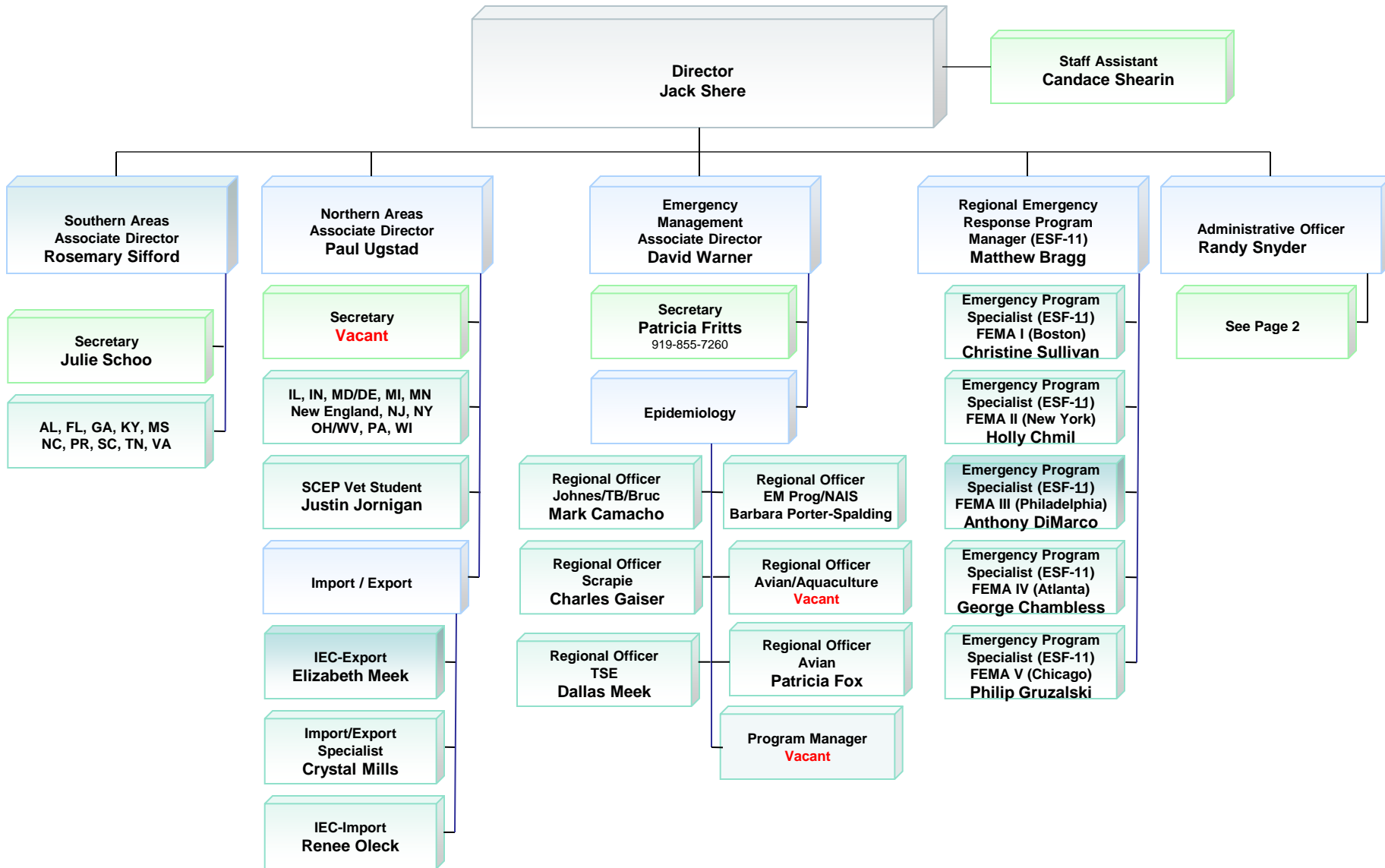
## National Surveillance Unit (NSU)



# VS Field Operations

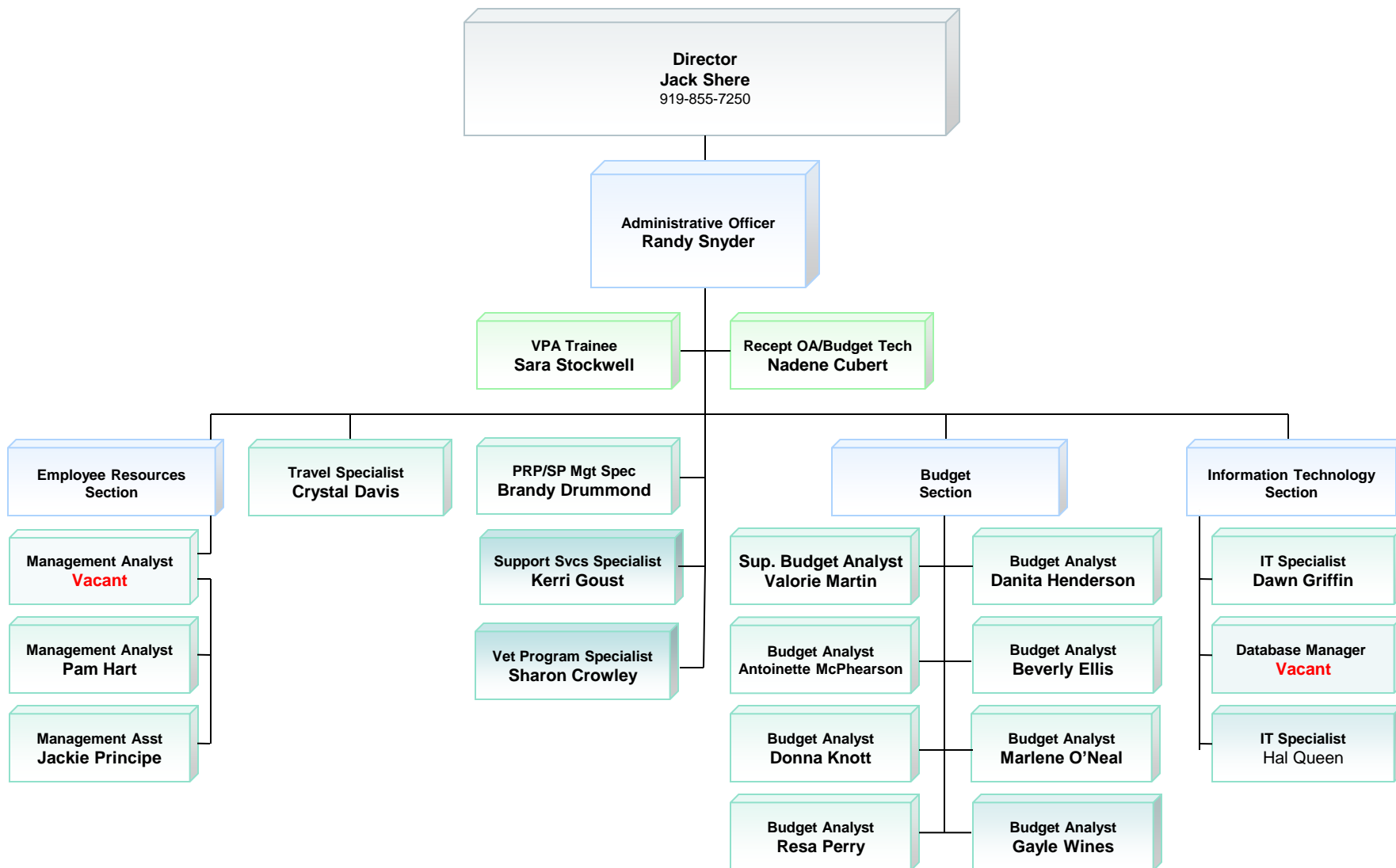


# VS Eastern Regional Office





# VS Eastern Regional Office (Page 2)



# VS Western Regional Office

**Director**  
Mark Davidson

**Staff Assistant**  
Janell Nelson

**Associate Director**  
Burke Healey

**Secretary**  
Debbie Beaugh

**WR Epidemiologist**  
Scrapie, BSE, CWD  
Dianne Norden

**WR Epidemiologist**  
Swine Health, TB  
Mark Schoenbaum

**Logistics Mgmt Specialist**  
Chris Berger

**Associate Director**  
Don Herriott

**WR Epidemiologist**  
BR, FAD, Traceability  
John Belfrage

**WR Epidemiologist**  
One Health, Aquaculture  
Lynn Creekmore

**WR Program Manager**  
Poultry, Equine  
Angela Pelzel

**WR Epidemiologist**  
GYA  
Ryan Clarke

GYA Issues

**VMO - Wildlife**  
WILDIT  
Jack Rhyan

**Wildlife Biologist**  
GYA  
Rebecca Frey

**Pauline Noll**  
Matt McCollum  
Karl Held

**Associate Director**  
*Vacant*

**GIS Specialist**  
William Kelley

**Import/Export**  
Coordinator (Animals)  
Ted Williams

**Import/Export**  
Coordinator (Products)  
Vicki Bridges

**Secretary**  
Heather Jackson

**Administrative Officer**  
David Bartling

**Lead Agreements Spec**  
Tania Hepburn

**Agreements Spec**  
Lourdes Kramer

**Supv Budget Analyst**  
Stephanie Stevens

**Lead IT Specialist**  
Vincent Baxter

**IT Specialist**  
Mark Carpenter

**Lead Mgmt Analyst**  
Richard Snyder

**Program Assistant**  
Penny Strang

**Secretary**  
Lauren Garrison

Agreements

Budget

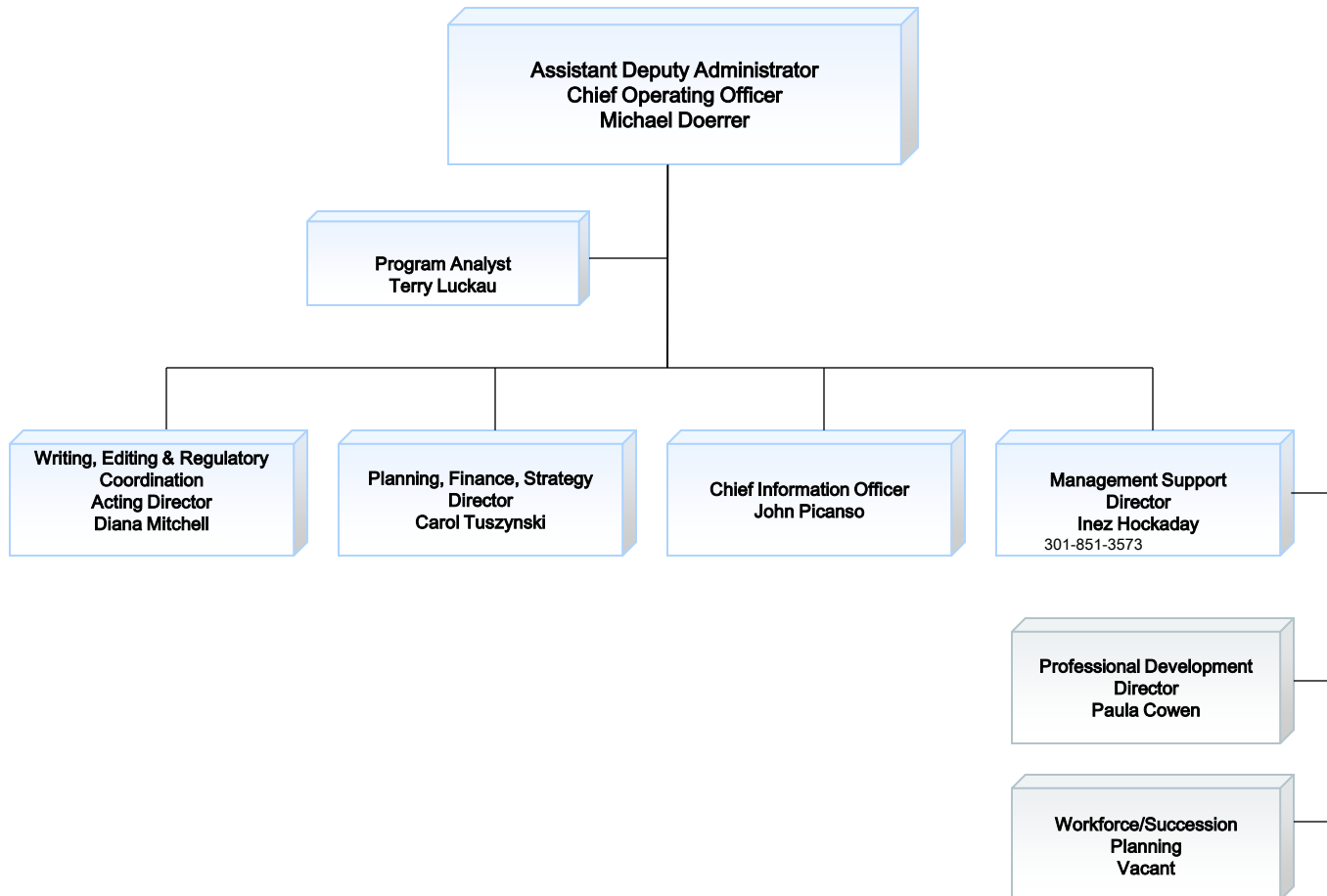
Information Technology

Management Analysis

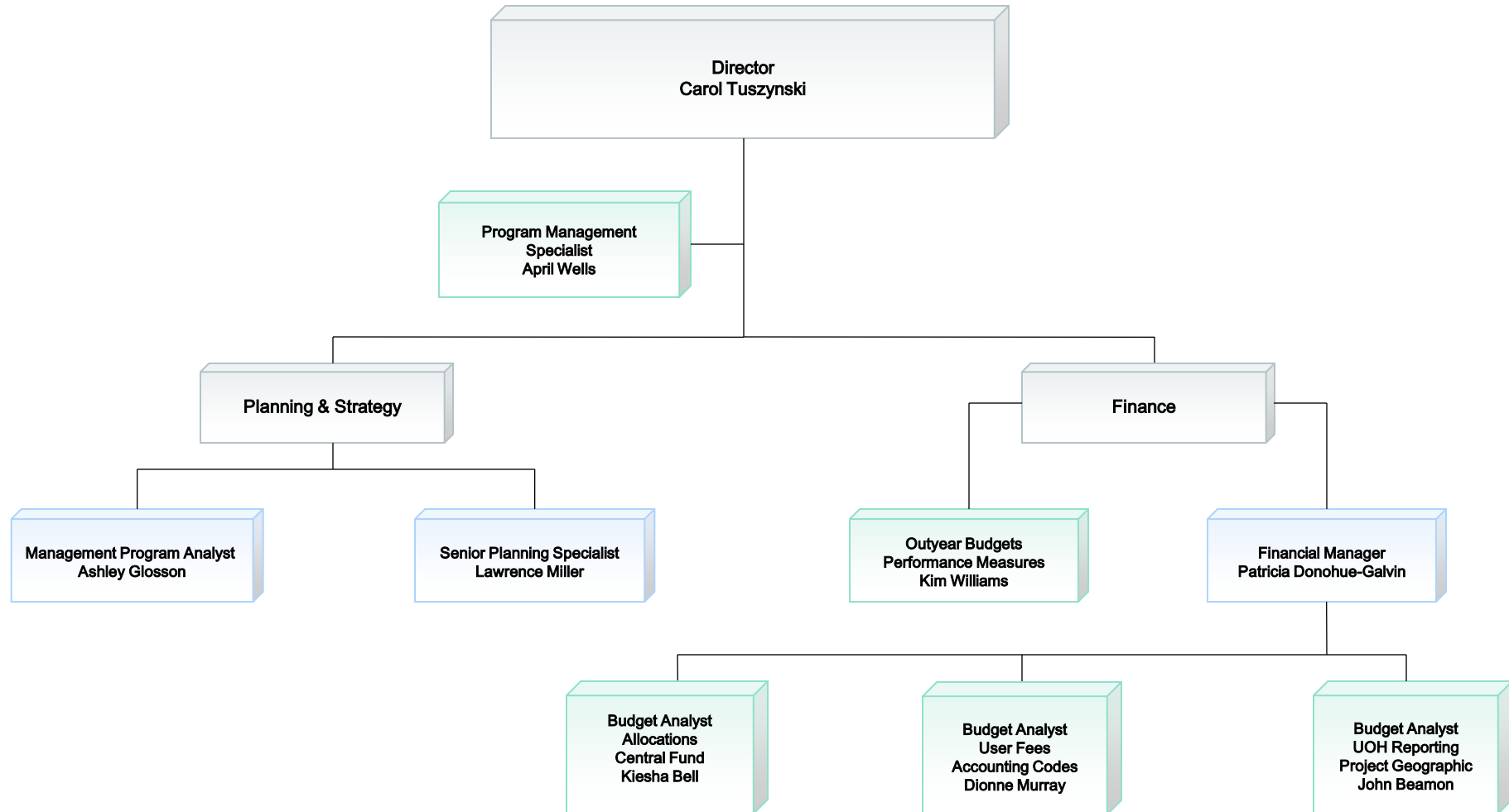
**SOUTHERN AREAS**  
AR: B. Brewer,  
CA/NV/HI: G. Brickler  
CO: S. Geiser-Novotny  
KS: K. Kirkham  
NM/AZ: P. Sciglibaglio  
OK: B. Schick,  
TX: K. Varner  
UT: R. De Carolis

**NORTHERN AREAS**  
IA: K. Petersburg  
ID: C. Gaborick  
MO: D. Hopson,  
MT: T. Linfield  
NE: K. Akin  
ND: L. Schuler  
SD: L. Tesar  
WA/AK/OR: J. Huntley  
WY: M. McDole

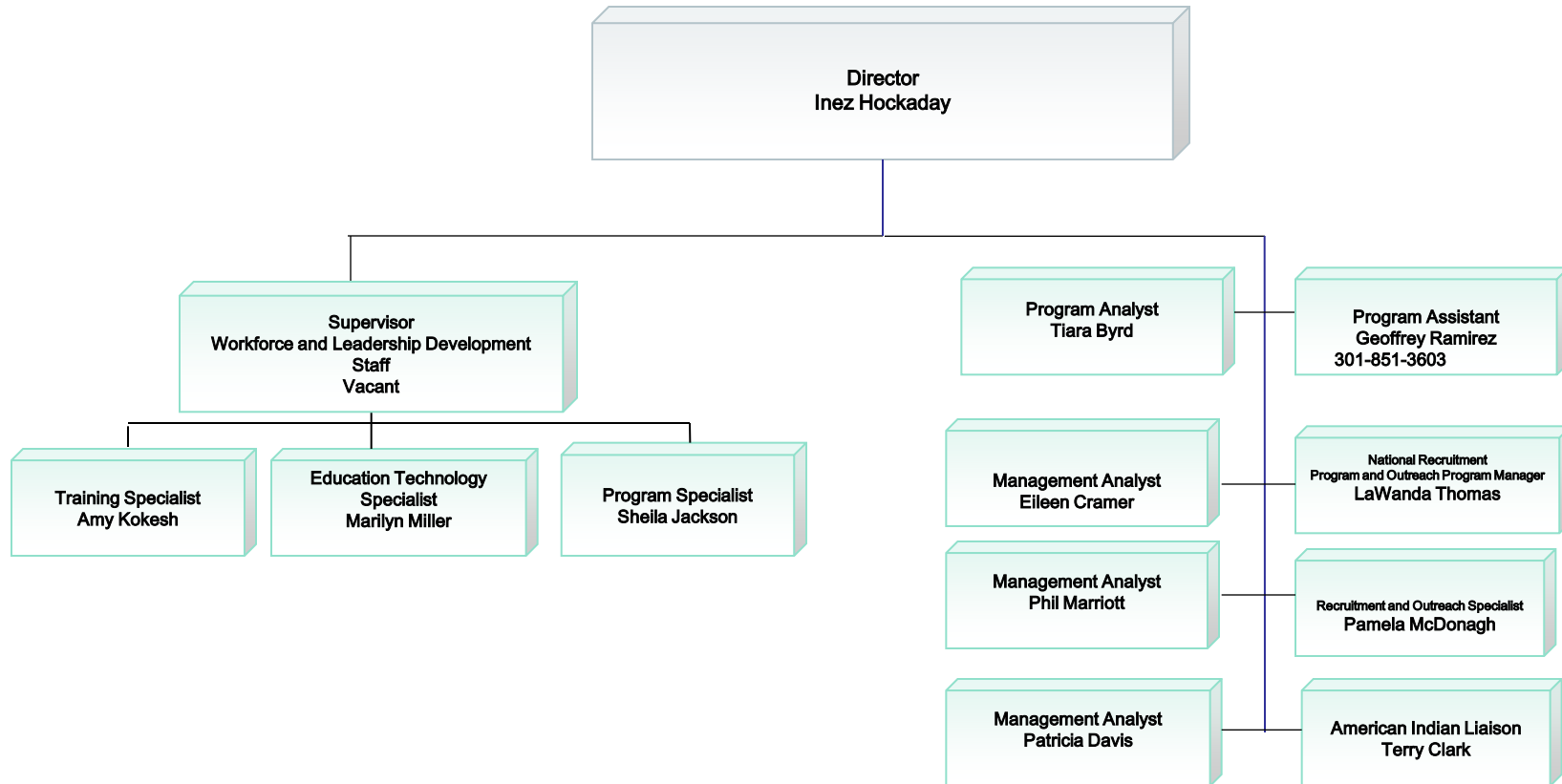
# Office of the VS Chief Operating Officer



# Planning, Finance, Strategy



# Management Support Staff - Administrative



# MSS – Professional Development Staff

Director  
Inez Hockaday

Director  
Paula Cowen

Eastern Region  
Raleigh, NC

Veterinary Medical Officer  
Robert Dickens

Veterinary Medical Officer  
Marvirstine Briggs-Fisher

Headquarters  
Riverdale, MD

Resource Management Specialist  
Melanie Adams

Training Technician  
Leon White

Training Technician  
Alicia Love

Training Technician  
Amy Klotz

Western Region  
Ft. Collins, CO

Veterinary Medical Officer  
Jason Baldwin

Veterinary Medical Officer  
Teresa Drotar

Training Specialist  
Kristin Keller

Program Analyst  
Therese Mindemann

Training Technician  
Stacey Williams

Laboratories  
Plum Island, NY

Training Specialist  
Liz Clark

NVSL  
Ames, IA

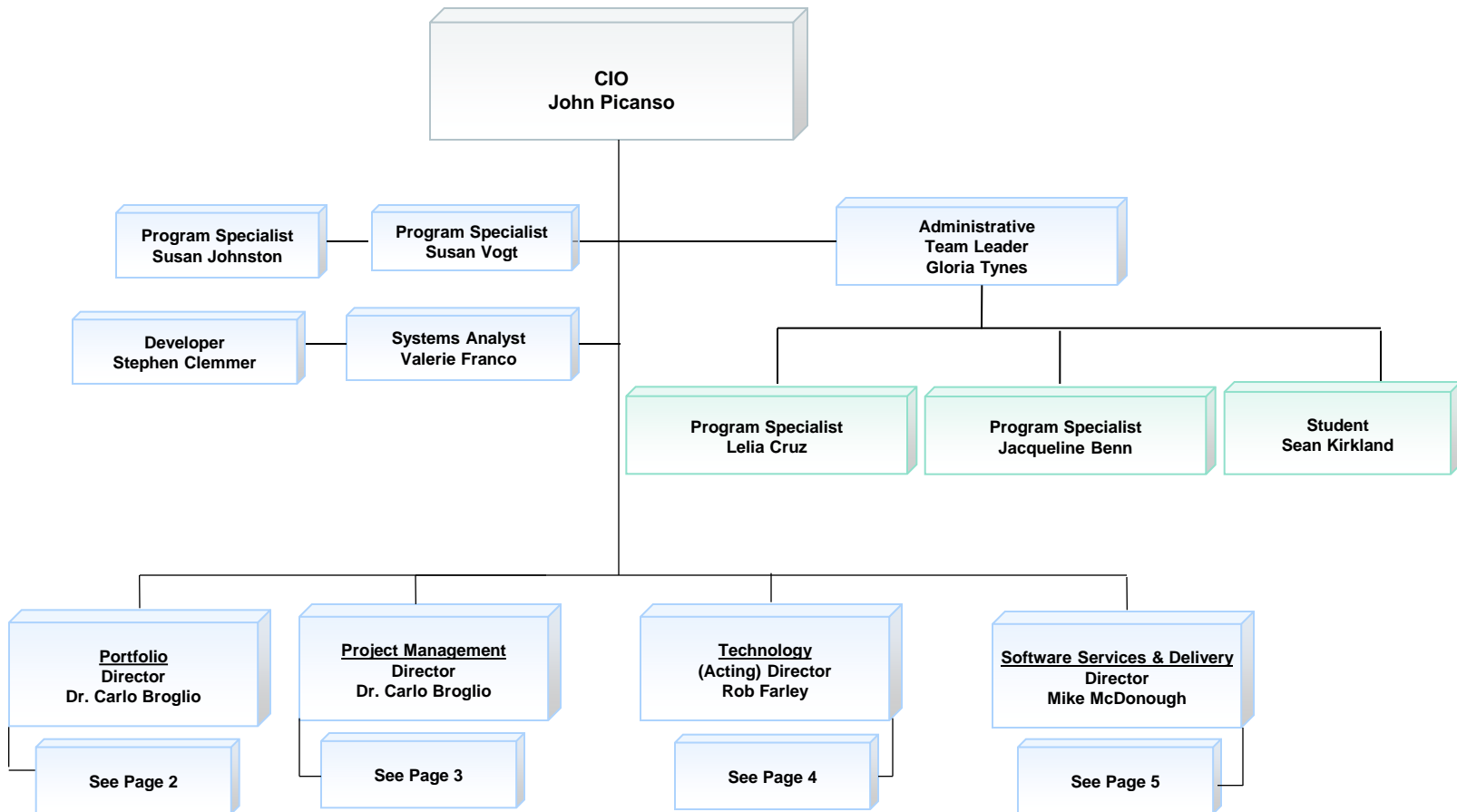
Veterinary Medical Officer  
Narda Huyke

Veterinary Medical Officer  
John Bare

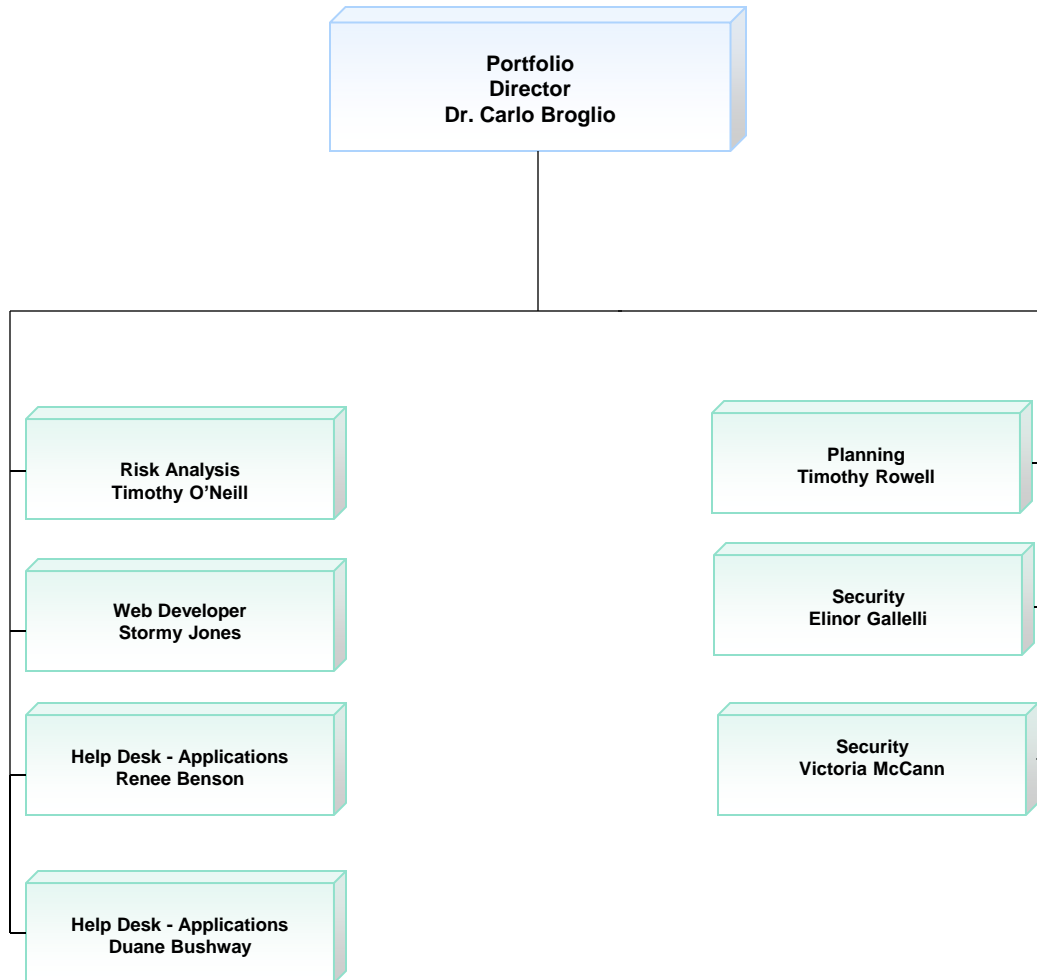
Training Specialist  
Nancy Platter

Training Technician  
Susan Hoover

# Office of the VS Chief Information Officer

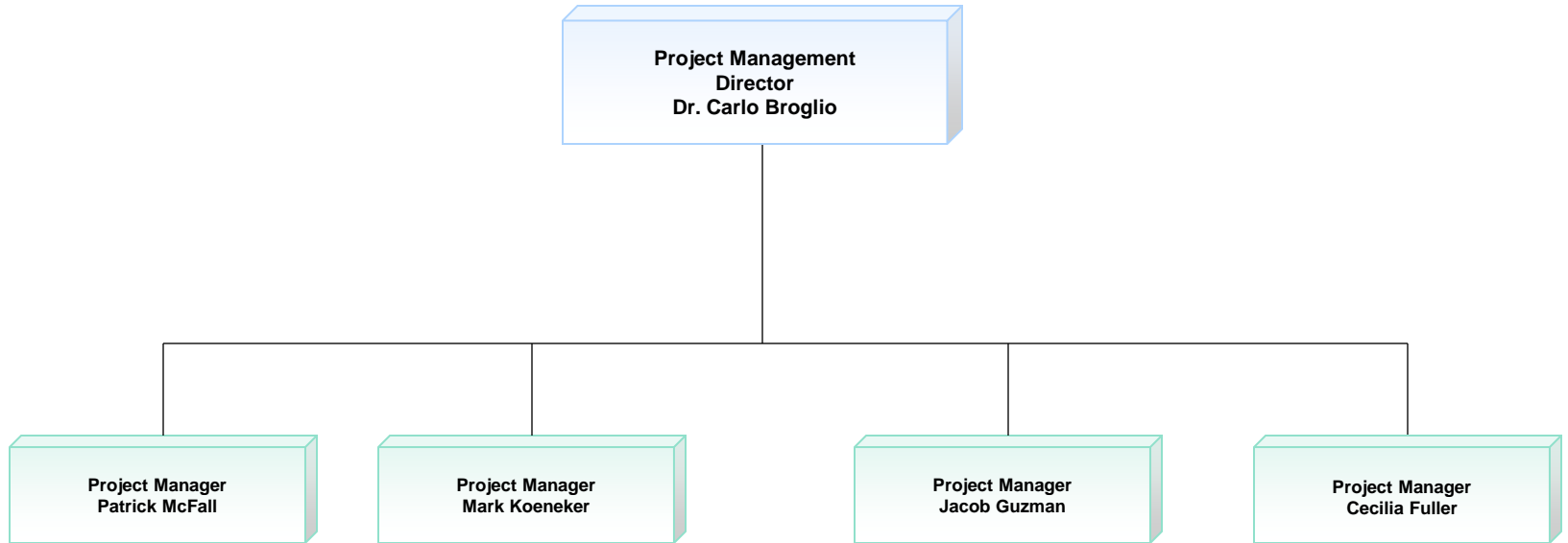


# Office of the VS Chief Information Officer

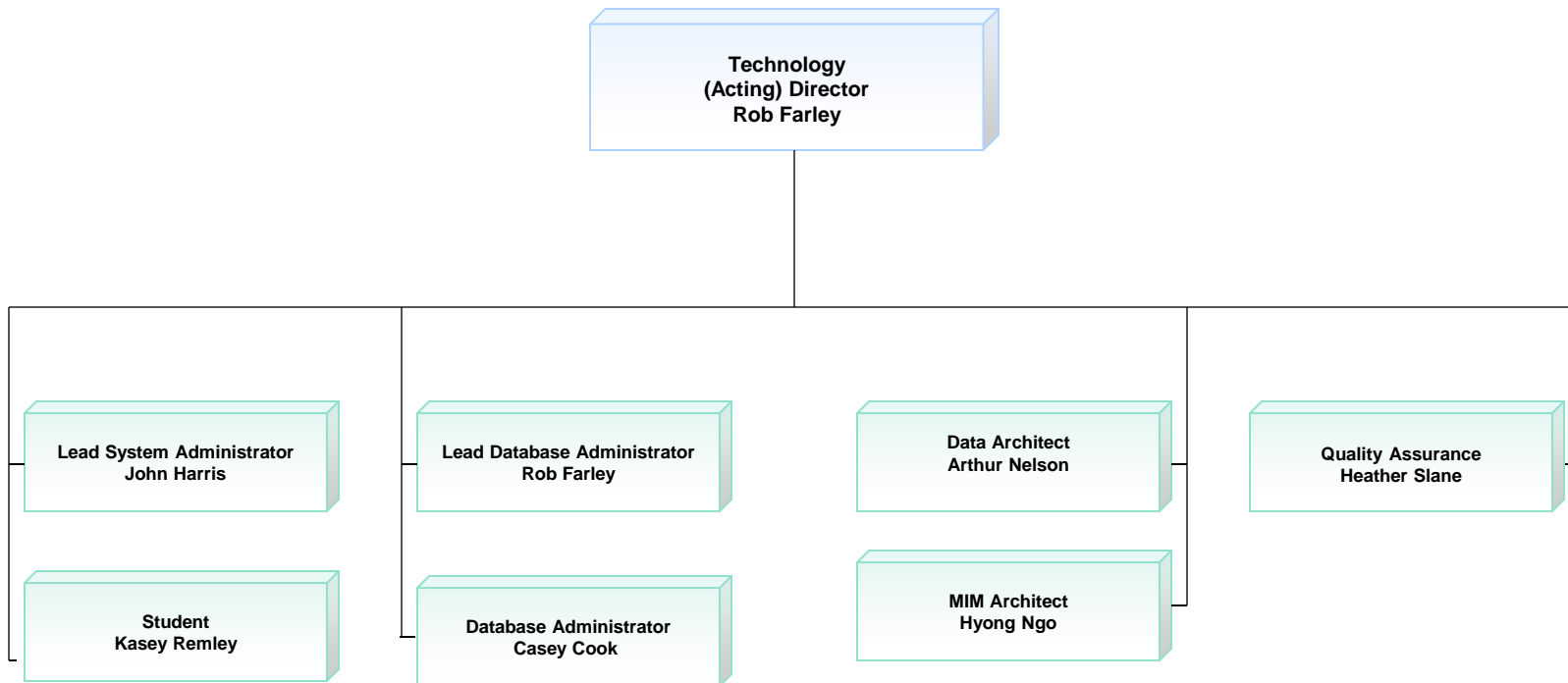




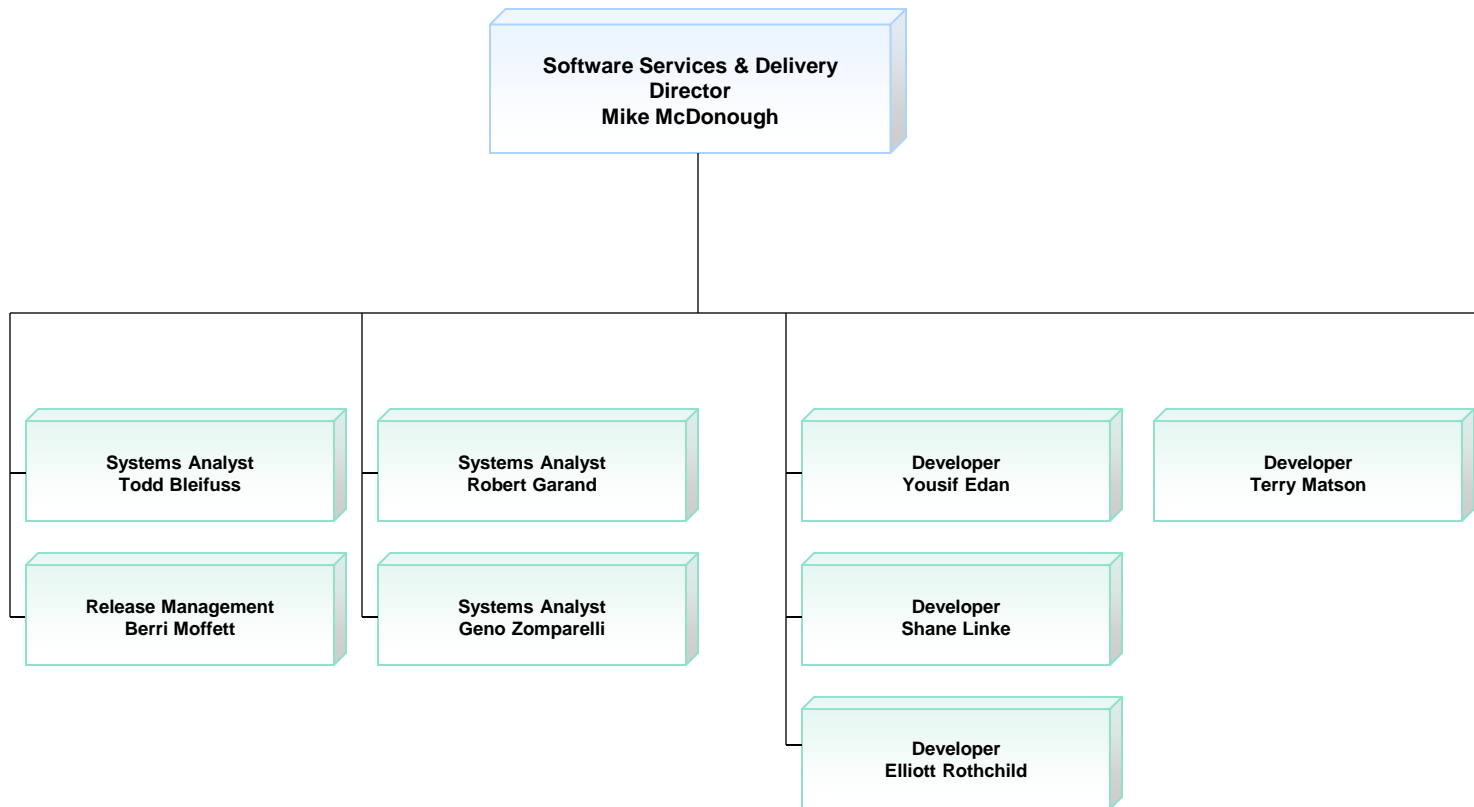
# Office of the VS Chief Information Officer



# Office of the VS Chief Information Officer



# Office of the VS Chief Information Officer



# Writing, Editing, and Regulatory Coordination Staff

