



# SAM

Shared Accounting Module

## GWA DAY 2012 Overview

*December 11, 2012*

# Shared Accounting Module Overview

Prepare Your Agency To Report The CARS Way With SAM

- What is SAM's role in CARS reporting?
- How will my ALC work with the SAM team?
- What tools and reference data are available to my agency?

# SAM's Role in CARS

- SAM's purpose is to validate or derive TAS-BETC data for all FPA transactions.
- Transactions will flow through SAM for all system types (Collections / IPAC / Payments).
- SAM ensures valid TAS-BETC is attached to each transaction.
- Allowing you to classify transactions in near real-time.

# SAM Operates in Three Modes

- SAM validates TAS-BETC on IPAC & Payment transactions (**Validation Mode**).
- SAM translates classification keys (C-Keys) into TAS/BETCs for Collections, RITS & TRACS transactions (**Translation Mode**).
- SAM provides a fail-safe in the event a TAS-BETC cannot be validated for any reason (**Default Mode**).

# CARS Transaction Life Cycle

## Collections



## IPA C



## Payments



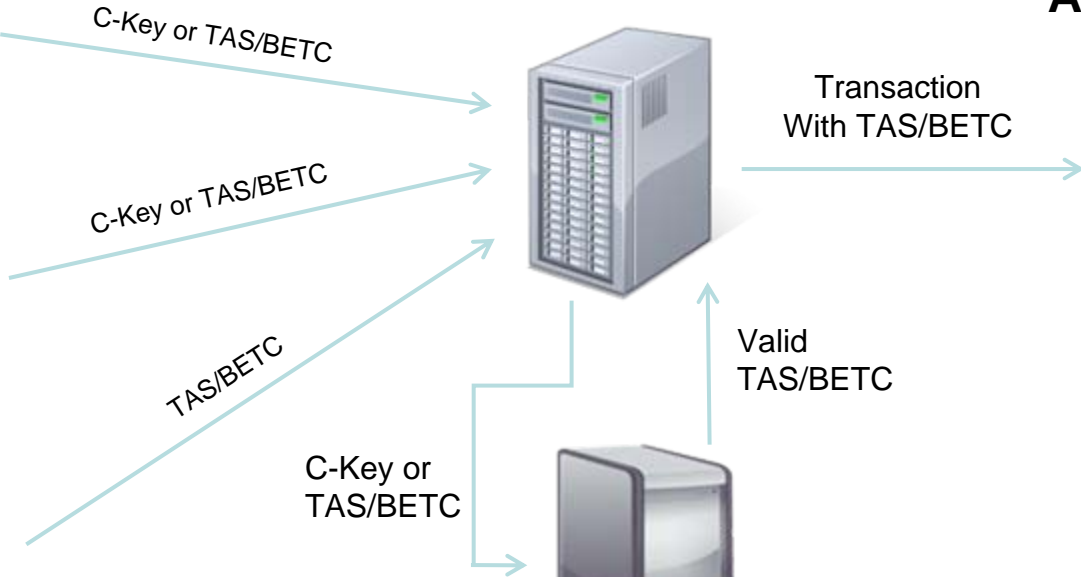
## CAFE



## SAM



## CARS Account Statement



## **Agencies Work With SAM Team To:**

- Provide TAS-BETC information for SAM cash flow profiles
- Establish Access Group Structure in SAM.
- Complete SAM Pilot Set-Up (prior to start of CARS pilot)

## **SAM Cash Flow Profile (CFP)**

- Excel template uploaded in SAM prior to CARS pilot.
- Required for collections, RITS and TRACS.
- Contains C-Key name/value which point to a TAS-BETC.
- SAM Team works with agency to complete CFP.
- ALC may need to update TAS listed on CFP yearly.

## SAM Classification Keys (C-Keys)

- Essential element of a SAM Cash Flow Profile.
- C-Key Name/Value have predetermined formats.
- Agency provides TAS for each C-Key.
- SAM links C-Key to TAS-BETC on CFP.



# C-Key Examples

<u>Mechanism</u>	<u>C-Key Name</u>	<u>C-Key Value</u>
OTCNet	Agency Accounting Code	TAS/Accounting Code
PAYGOV	PAYGOV ALC+2	99999999 + 00
Credit Card	Merchant ID	4445000123456
ECP	ECP ALC+2	99999999 + 00
Fedwire	CGFEDWIRE	8 + 99999999 + 000
ACH REX	CGACH	8 + 99999999 + 000
TRACS	ALC Number	99999999
RITS	Payroll Office Number	88888888

# SAM Translates C-Key

C-Key Value

TAS-BETC Combination

Ckey Value	Description	Distribution Rule	SP	ATA	AID	BPOA	EPOA	A	MAIN	SUB	BETC	%
89001602	Agency Location Code	Credit			089			X	5068	000	COLL	100

*SAM Crosswalks the C-Key Value to your TAS-BETC*

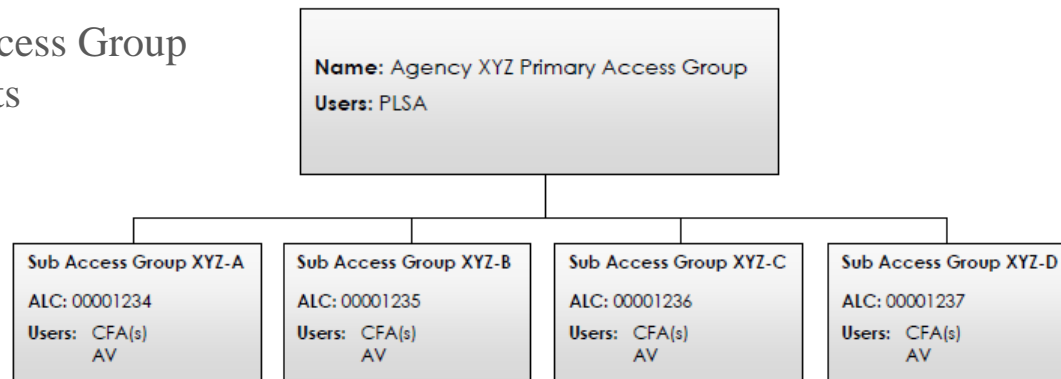
## After The Translation Is Completed:

- SAM validates the TAS-BETC listed on CFP to verify it is open for use.
- SAM sends the transaction with TAS/BETC to CARS.

# SAM Access Group

- ALC's account within the Shared Accounting Module.
- Two basic types – Single Primary or Primary w/Descendant(s).
- Must be established before beginning a CARS pilot phase.

**Example:** Access Group  
w/Descendants



# SAM Pilot Set- Up

- SAM team meets with ALC prior to start of CARS Pilot.
- Host conference call to discuss access group structure.
- Explain user roles and how to submit required form(s).
- Work with ALC to complete cash flow profile(s).
- Work with ALC to enter SAM default rules.

# Electronic Training

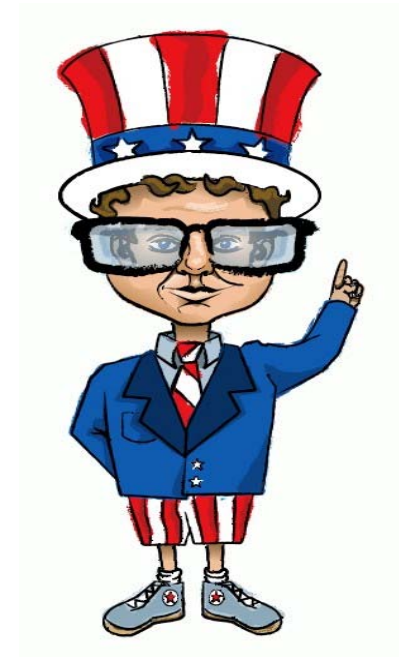
- SAM offers electronic training modules to help assist users with navigating the system
- Step-by-step video tutorials based on the user role and application functionality

# Things to Consider

- Your agency can work with the SAM team now to complete a cash flow profile and establish a SAM access group structure.
- ALCs are required to maintain the SAM cash flow profile upon completion of the pilot phase.
- Any collection mechanisms added after an ALC becomes a CARS reporter will require an additional CFP.
- Fiscal year TAS need to be updated in SAM each year.

# Additional Tools & Resources

- SAM Public Website
- Enterprise Reference Data Options



# SAM Public Website

## Go To Source For TAS-BETC Information

- TAS-BETC Listings for all system types.
- Includes component TAS-BETC.
- Provides crosswalk to two-digit fiscal year string TAS.
- Variety of file formats to choose from.
- Username and password are not required.
- Updated daily (available 6 a.m. EDT).



# SAM Public Website

<https://www.sam.fms.treas.gov/sampublic/>

**FMS-RD**  
Financial Management Service Reference Data

Home  
GWA Reference Data  
Treasury Accounts  
Reference Data  
Contact Us

**Select Treasury Accounts**

Welcome to the Financial Management Service's Reference Data web site. This site provides a list of values for Treasury Account Symbols (TAS) and Business Event Type Codes (BETC), part of FMS Accounting Data Standards (FADS). Agency Location Codes (ALC) are also FADS, and can be found at the Shared Accounting Module (SAM). A user id is necessary to access ALC information.

TAS components are eight meaningful pieces of business data, which combine to identify an account of the US Treasury. These components are joined with a Business Event Type Code (BETC) to report Federal government financial transactions.

Per Commissioner David Lebyk's January 14, 2011 letter to the CFO community [ <http://www.fms.treas.gov/ccmm/final-CFO-letter-01-14-11.pdf> ], FMS will use and collect the Component TAS and business event type code (BETC) from all internal and external systems as of October 1, 2014. For more information on transitioning to the Component TAS, refer to [http://fms.treas.gov/cars/factsheet\\_tas.html](http://fms.treas.gov/cars/factsheet_tas.html).

**What's New?**

A new Business Transaction Type has been introduced. Non Treasury Disbursing Office (NTDO) Payment files are now available for download.

All files in XML format will follow FMS Treasury Account Symbol Records Message v3.0 Schema. The schema may be obtained at <http://fms.treas.gov/data/index.html>. Select Current FMS XML Release to download the current suite of schemas. The Treasury Account Symbol schema is located in the TAS folder. If you have any questions, please contact [sam\\_testing@stls.frb.org](mailto:sam_testing@stls.frb.org).

**Available Reference Files**

This website also provides reference data download files in multiple formats, as well as mappings from the current TAS formats to the new Component TAS format.

# SAM Public Website

<https://www.sam.fms.treas.gov/sampublic/>

The screenshot shows a web browser window with the URL <https://www.sam.fms.treas.gov/sampublic/tasbetc.h>. The page title is "Treasury Accounts". The main content area features the "FMS-RD Financial Management Service Reference Data" logo and a navigation menu with "Home", "GWA Reference Data", and "Contact Us". The "Treasury Accounts" section is active, displaying instructions on how to view and retrieve files. A table lists various data types and their available file formats with approximate sizes. A red box highlights the "Intragovernmental" data type, and a red oval highlights the file format options: XML - ZIP, XML, CSV - ZIP, CSV, Excel CSV - ZIP, and Excel CSV. A red arrow points to this oval with the text "Multiple File Formats Available".

Click on a file's link to view it in a separate browser window.

To retrieve a file in compressed format, right-click on the ZIP hyperlink, select "Save Target As..." and save the file to your computer. Note: CSV and CSV for Excel files of more than 65,500 lines must be saved to disk and opened in a text editor (e.g., Wordpad or Notepad), as Excel cannot open them due to size limitations.

Data Type	Data Files (and approximate file sizes)					
	XML - ZIP	XML	CSV - ZIP	CSV	Excel CSV - ZIP	Excel CSV
Intragovernmental	1 MB	42 MB	710 KB	16 MB	800 KB	18 MB
Collection	1 MB	40 MB	740 KB	16 MB	750 KB	17 MB
Payment	640 KB	22 MB	440 KB	7 MB	450 KB	8 MB
NTDO Payment	1 MB	40 MB	700 KB	18 MB	700 KB	19 MB
Authority Transaction	2 MB	108 MB	1 MB	55 MB	2 MB	60 MB
Total Files	2 MB	140 MB	1 MB	70 MB	2 MB	75 MB

These files contain all data elements and attributes necessary to map between the STAR TAS, GWA TAS, and new Component TAS.

# SAM TAS-BETC Listing

	A	B	C	D	E	F	G	H	I	J	K	L	M	N	O
1	Outbound Time Stamp 2012-11-24T02:00:00-05:00 Inbound Last Received Time Stamp 2012-11-23T21:02:49-05:00 Inbound Last Changed Time Stamp 2012-11-23T21:02:49-05:00														
2	SP	ATA	AID	BPOA	EPOA	A	MAIN	SUB	Admin Bu	GWA TAS	GWA TAS Name	Agency Name	BETC	BETC Name	Effective Date
22993			020			X	0101	000	01	20X0101	SALARIES AND EX	DEPARTM	COLLAJ	Adjustme	1987-10-01
22994			020			X	0101	000	01	20X0101	SALARIES AND EX	DEPARTM	DISB	Gross Dist	1987-10-01
22995			020			X	0101	000	01	20X0101	SALARIES AND EX	DEPARTM	DISBAJ	Adjustme	1987-10-01
22996			020	2007	2008		0101	000	01	2007/0801	SALARIES AND EX	DEPARTM	COLL	Offsetting	2006-10-01
22997			020	2007	2008		0101	000	01	2007/0801	SALARIES AND EX	DEPARTM	COLLAJ	Adjustme	2006-10-01
22998			020	2007	2008		0101	000	01	2007/0801	SALARIES AND EX	DEPARTM	DISB	Gross Dist	2006-10-01
22999			020	2007	2008		0101	000	01	2007/0801	SALARIES AND EX	DEPARTM	DISBAJ	Adjustme	2006-10-01
23000			020	2008	2008		0101	000	01	20080101	SALARIES AND EX	DEPARTM	COLL	Offsetting	2007-10-01
23001			020	2008	2008		0101	000	01	20080101	SALARIES AND EX	DEPARTM	COLLAJ	Adjustme	2007-10-01
23002			020	2008	2008		0101	000	01	20080101	SALARIES AND EX	DEPARTM	DISB	Gross Dist	2007-10-01
23003			020	2008	2008		0101	000	01	20080101	SALARIES AND EX	DEPARTM	DISBAJ	Adjustme	2007-10-01
23004			020	2008	2008		0101	000	01	20080101	SALARIES AND EX	DEPARTM	DISBCA	Payments	2007-10-01
23005			020	2008	2008		0101	000	01	20080101	SALARIES AND EX	DEPARTM	DISBCAAJ	Adjustme	2007-10-01



Component TAS



String TAS



BETC

**SAM Public Website TAS/BETC Files Are Updated Daily**

# Breaking Down the TAS

- TAS - Treasury Account Symbol
  - aka TAFS, fund symbols, appropriation accounts, and receipt accounts
- Format Standardization - move to Component TAS
  - Expansion of Dept Agency Codes from 2 to 3 digits
  - Expansion of Fiscal Year into 3 separate fields
  - Elimination of Standard Subclasses – replaced by BETC

# Component TAS Structure

Component Name	Acronym /Field Length	Definition
1. Sub-Level Prefix Code	SP/2	A programmatic breakdown of the account for Treasury publication purposes.
2. Allocation Transfer Agency Identifier	ATA/3	The Agency Identifier of the agency receiving funds through an allocation transfer.
3. Agency Identifier	AID/3	Represents the department, agency, or establishment of the U.S. Government that is responsible for the TAS. Used in conjunction with the main account code.

- Current standard sub class codes will be replaced by a BETC.
- Agency Identifiers are 3 digits in length.

# Component TAS Structure (cont'd)

Component Name	Acronym/Field Length	Definition
4. Beginning Period of Availability	BPOA/4	In annual and multi-year funds, identifies the first year of availability under law that an appropriation account may incur new obligations.
5. Ending Period of Availability	EPOA/4	In annual and multi-year funds, identifies the last year of funds availability under law that an appropriation account may incur new obligation.
6. Availability Type Code	A/1	Identifies no-year accounts “X”, clearing/suspense accounts “F”, Treasury’s central summary general ledger accounts “A”.

- BPOA and EPOA must be the entire 4-digit year (ex: 2012).
- Period of Availability (BPOA/EPOA) and Availability Type Code are mutually exclusive.



# Component TAS Structure (cont'd)

Component Name	Acronym/Field Length	Definition
7. Main Account Code	MAIN/4	Identifies the type and purpose of the fund.
8. Sub-Account Code	Sub/3	Identifies an available receipt or other Treasury-defined subdivision of the main account.

- Main Account Code remains the same.
- Sub-Account Code is a mandatory field.

# Component TAS Example

## Beginning / Ending Period of Availability

Component

*Example:* SP      ATA      AID      BPOA      EPOA      A      MAIN      SUB      BETC  
                 075      070      2009      2014                0714      000      DISB



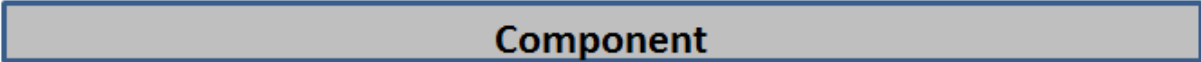
String

75-7009/140714



# Component TAS Example

## Multi-Year



Example: SP      ATA      AID      BPOA      EPOA      A      MAIN      SUB      BETC  
                        012   X              5010      001      COLL



12X5010.1

# Business Event Type Code (BETC) Definition

- Acronym for Business Event Type Code, BETC refers to an 8-character code that indicates the type of activity being reported (e.g. receipt, disbursement, etc.).
- BETC determines the transaction effect on the Treasury Account Symbol's Fund Balance with Treasury.
- BETC replaces transaction codes and standard sub-classes but at a more intuitive level of detail.

# Business Event Type Code (BETC) Examples

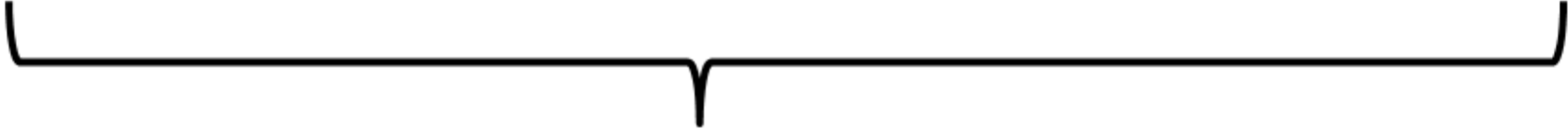
BETC	BETC Description	Transaction Effect	Transaction Code	Standard Subclass
DISB	Gross Disbursement	Dr (Decrease)	61	
DISBAJ	Adjustment To Gross Disbursements	Cr (Increase)	61	
DISBCA	Payments for Obligations Of Closed Accounts	Dr (Decrease)	61	46
INVNGSEC	Investment In Non-Guaranteed Government Agency Securities	Dr (Decrease)	61	81
FHOTXD	Funds Held Outside The Treasury	Dr (Decrease)	61	41

# Component TAS Example

## Funds Held Outside Treasury

Component

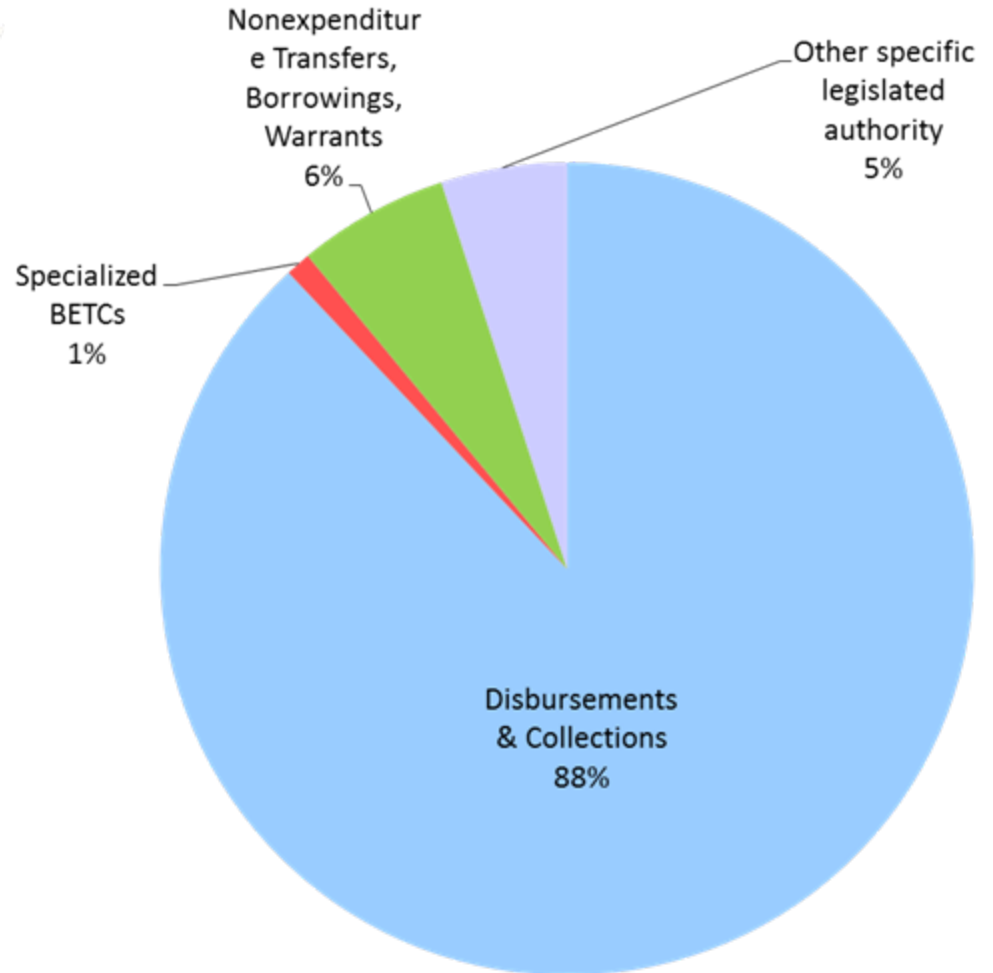
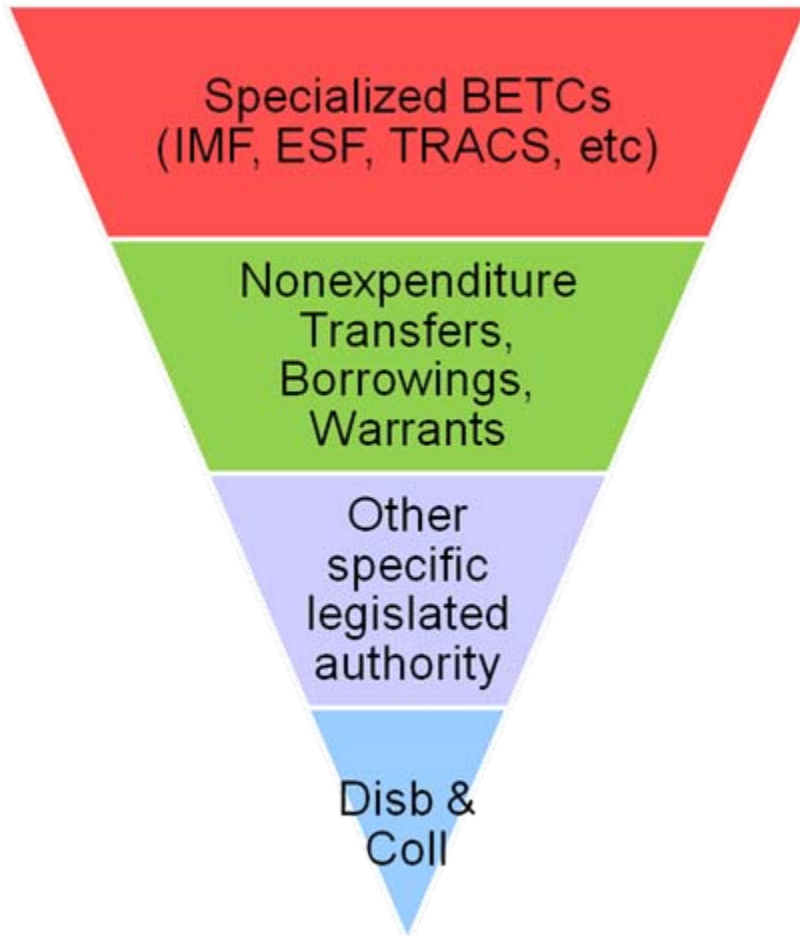
*Example:*   **SP**        **ATA**        **AID**        **BPOA**      **EPOA**      **A**        **MAIN**      **SUB**        **BETC**  
                                070        2012        2012                   0610        000        FHOTXD



String

(41)70120610

# Breaking Down the BETC



# SAM Enterprise Reference Data

- SAM Enterprise Reference Data consist of Agency Location Code, TAS/BETC and ABA data
- Upon request SAM can provide ERD information to business partners on a daily, weekly or monthly basis.
- Data is available via web service (preferred method), email, drop file or message.
- For more information, please download the Trading Partner Integration Guide at [http://fms.treas.gov/sam/ent\\_ref\\_data.html](http://fms.treas.gov/sam/ent_ref_data.html)

# **SAM Team**

## **Contact Information**

Becky Baumhoegger	(314) 444.8667
Harold Grice	(314) 444.4238
Beckie White	(314) 444.6248
Teresa Wright	(314) 444.4274

SAM Team Email: [sam.conversion@stls.frb.org](mailto:sam.conversion@stls.frb.org)

### **Additional Websites:**

**SAM FMS Page:** <http://fms.treas.gov/sam/>  
**SAM Application:** <http://sam.fms.treas.gov/>  
**SAM Public Website:** <http://sam.fms.treas.gov/sampublic/>

# Questions?

