

United States Department of Agriculture
National Agricultural Statistics Service

**CROP PRODUCTION – ANNUAL
GRAIN STOCKS
RICE STOCKS
WINTER WHEAT SEEDINGS
JANUARY CROP PRODUCTION**

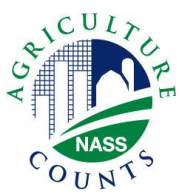
Executive Summary



Contents

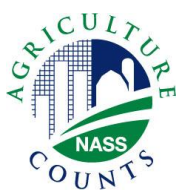


Field Crops	Stocks	Fruits/Nuts
Planted Acres	Corn	Citrus
Harvested Acres	Soybeans	
Yield	Cotton	
Production	Sorghum	
Winter Wheat Seedings	Rice	
	Hay	
	All Wheat	



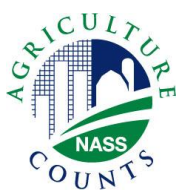
Survey Overview

	December Ag Survey
Survey Type	Farmer Reported
Collection Method	Mail, Phone, Internet, Personal Interview
Crops Included	Field Crops
States	All except AK and HI
Sample Size	83,365
Collection Period	Nov. 26 – Dec. 18



U.S. Principal Crops Planted

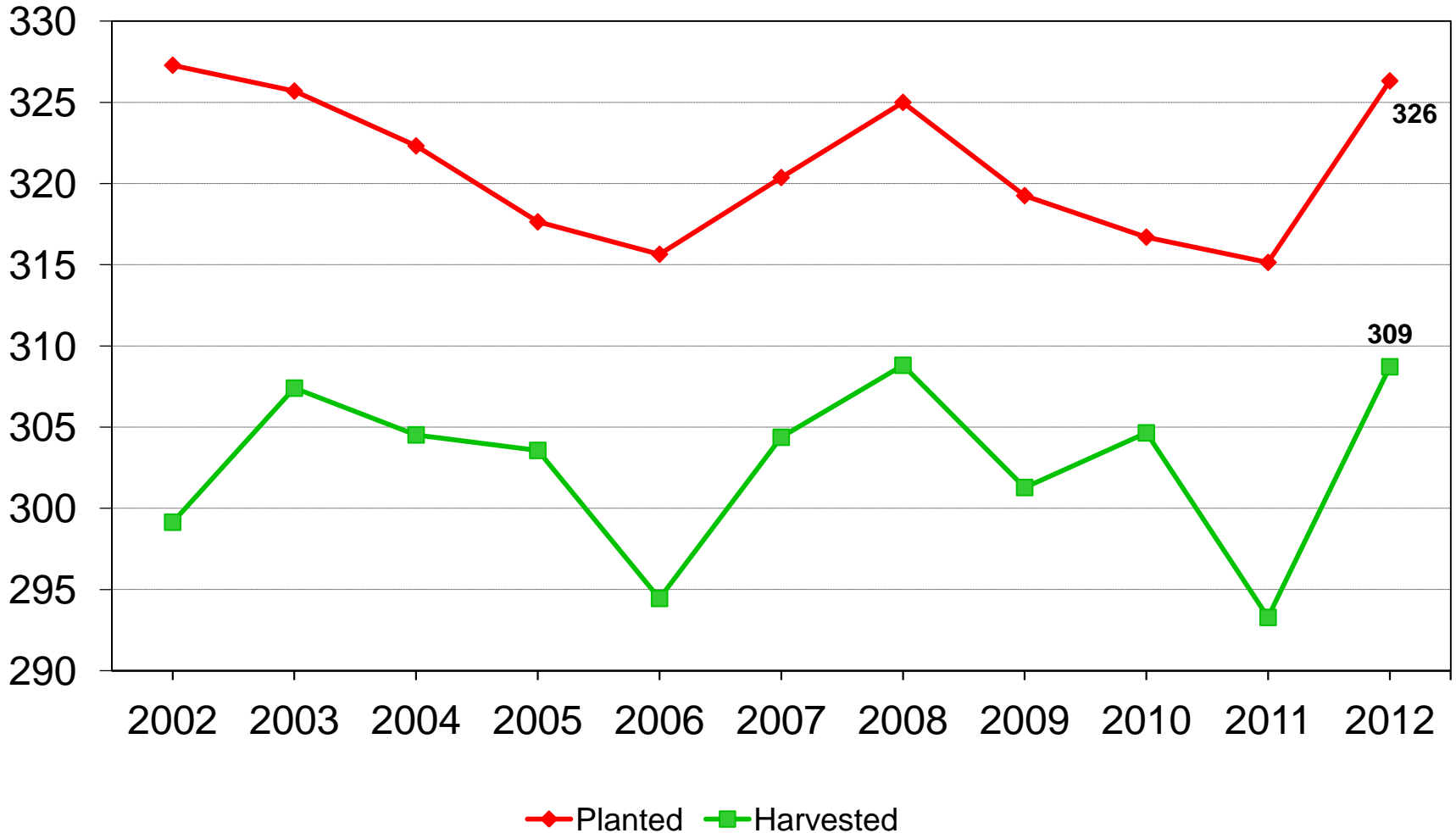
Year	Principal Crops	Change from Previous Year
<i>---Million acres---</i>		
2003	325.7	- 1.6
2004	322.3	- 3.4
2005	317.6	- 4.7
2006	315.6	- 2.0
2007	320.4	+ 4.7
2008	325.0	+ 4.6
2009	319.3	- 5.7
2010	316.7	- 2.6
2011	315.1	- 1.6
2012	326.3	+ 11.2



U.S. Principal Crop Acres

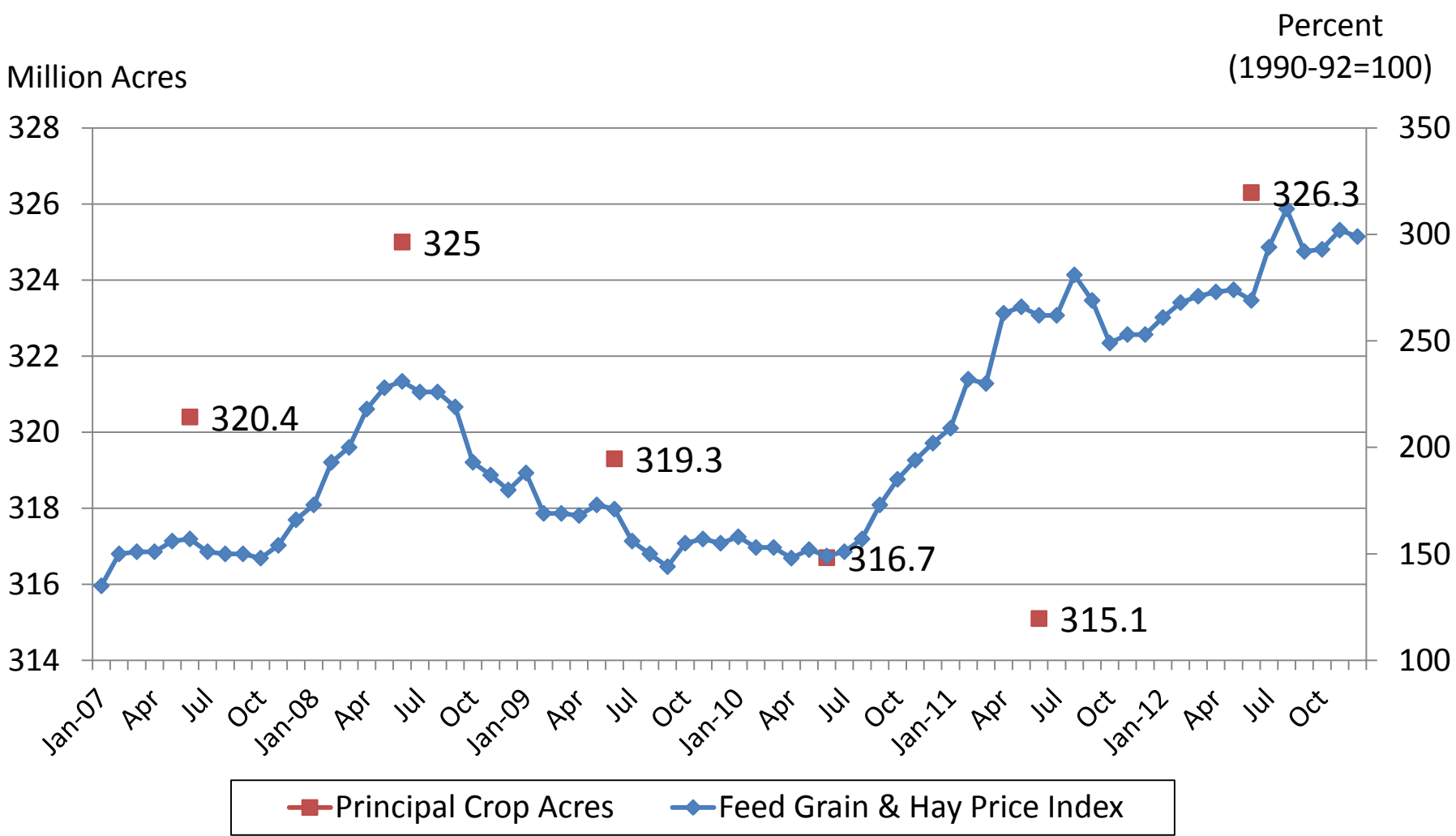


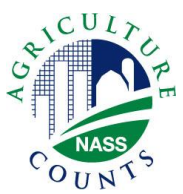
Million acres





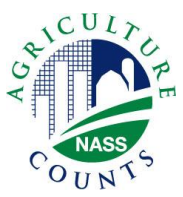
Feed Grain & Hay Price Index and Principal Crop Acres (2007-2012)





Crop Production 2012 Annual

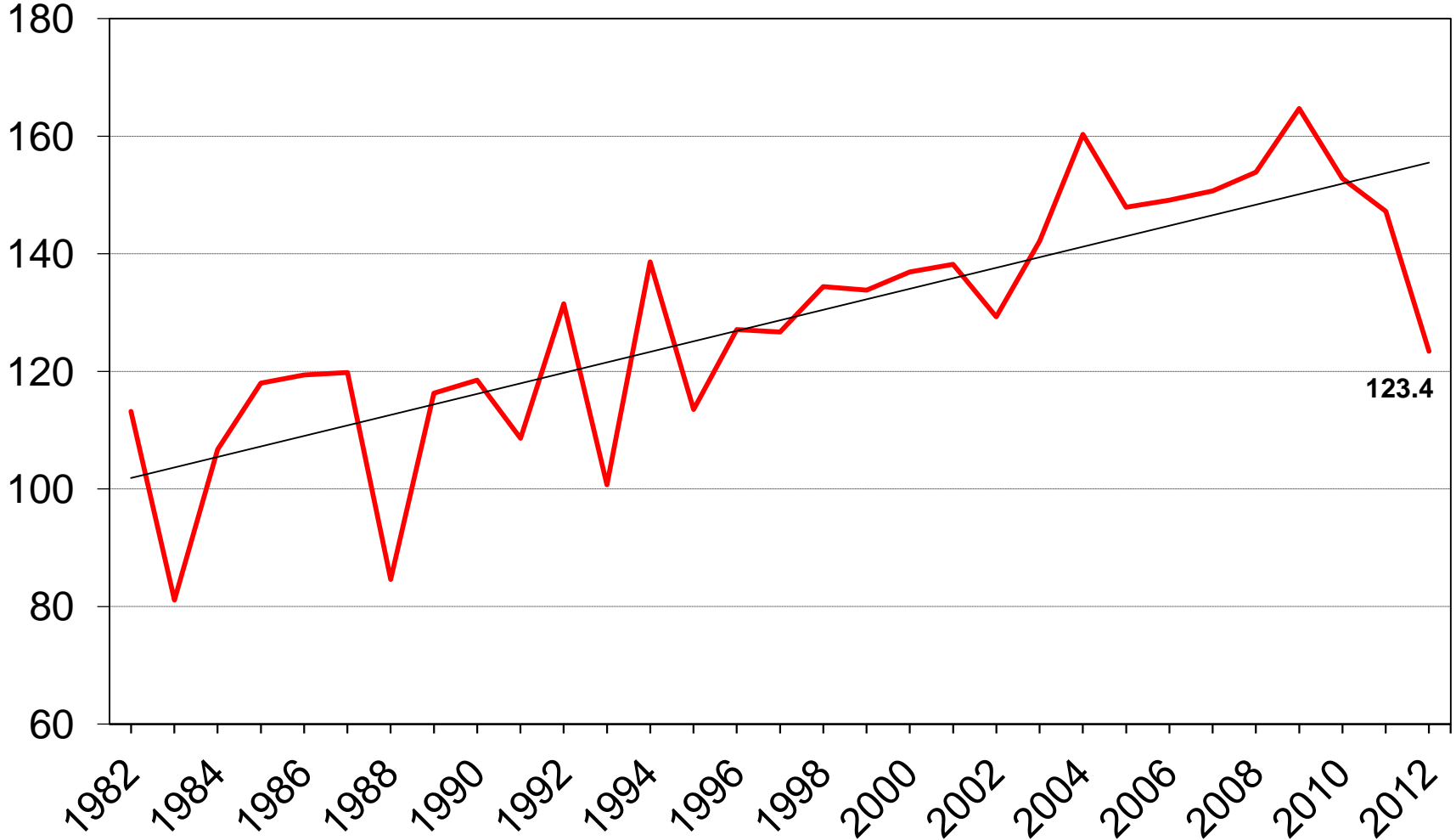
Crop	Unit	2012	% Change from Previous Forecast	% Change from Previous Season
Corn				
Planted	Mil Ac	97.2	+ 0.2	+ 5.7
Harvested	Mil Ac	87.4	- 0.4	+ 4.0
Yield	Bu/Ac	123.4	+ 0.9	- 16.2
Production	Bil Bu	10.8	+ 0.5	- 12.8
Dec Stocks	Bil Bu	8.03	---	- 16.8

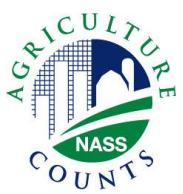


U.S. Corn Yield



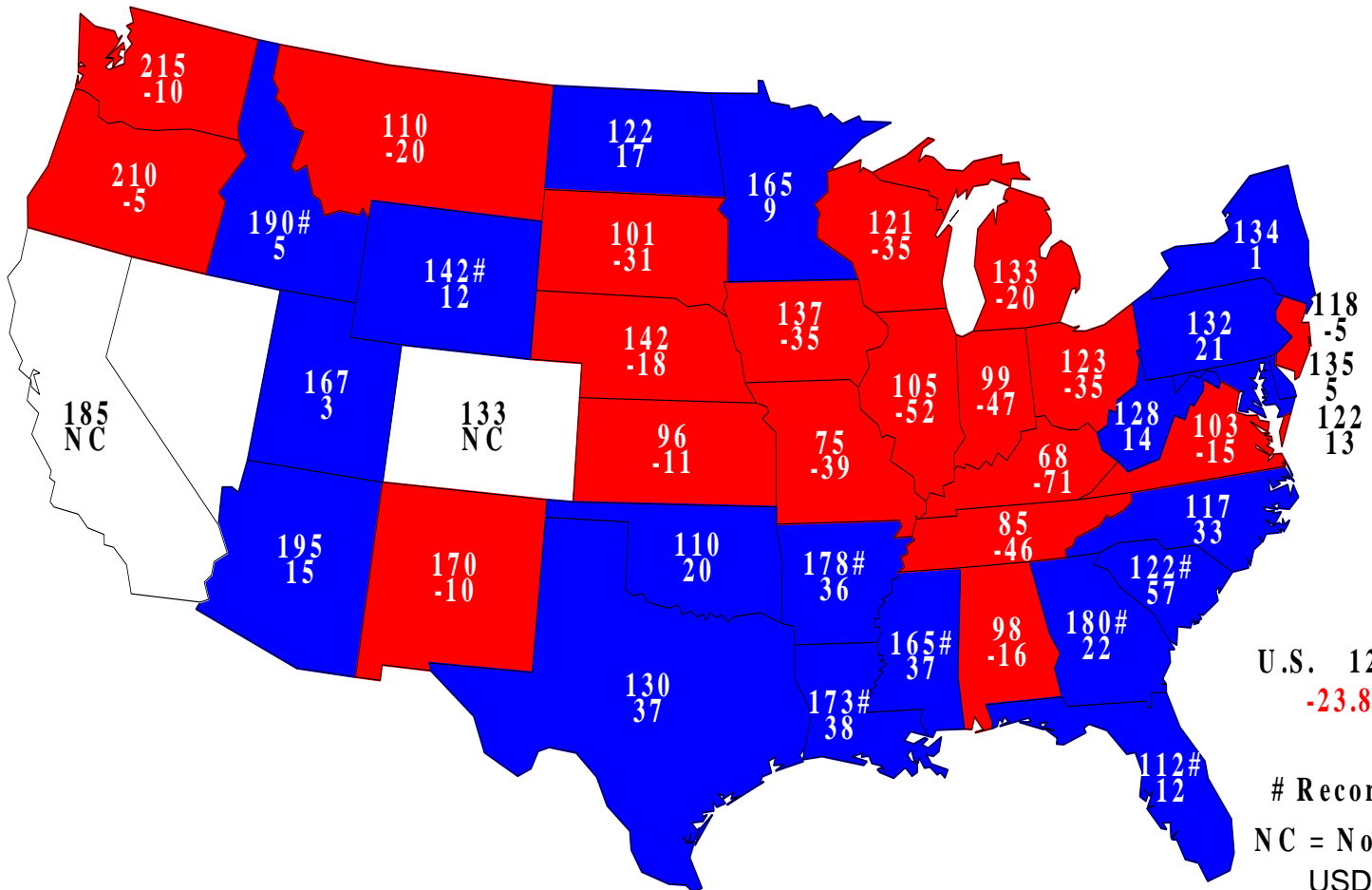
Bushels/acre





Corn for Grain Yields, 2012

Bushels and Change From Previous Year



U.S. 123.4
-23.8

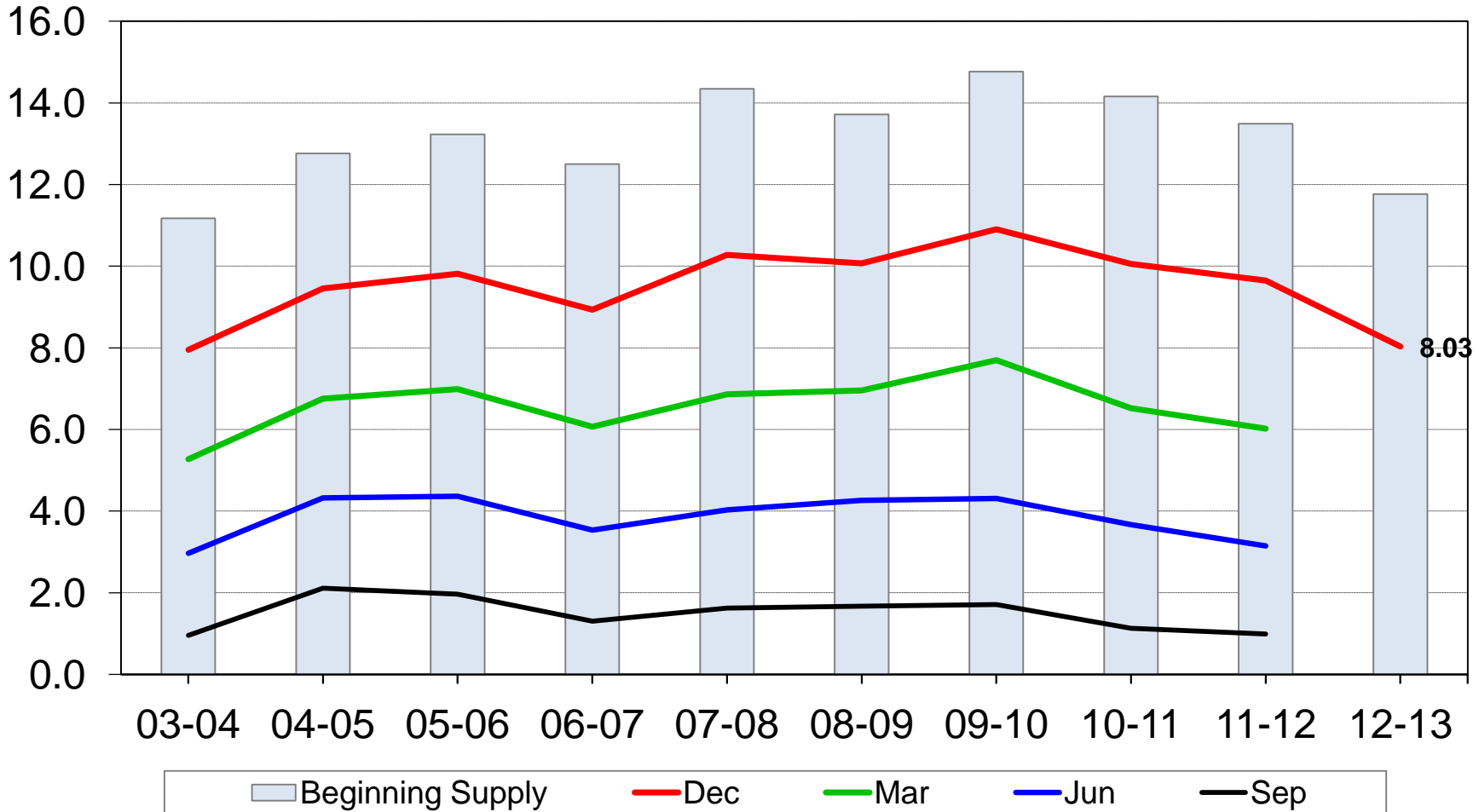
Record High
NC = No Change
USDA-NASS
01-11-13

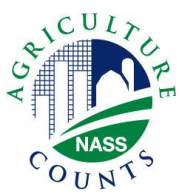


U.S. Corn Stocks



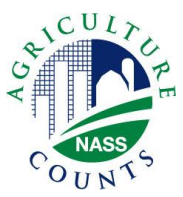
Billion bushels





Crop Production 2012 Annual

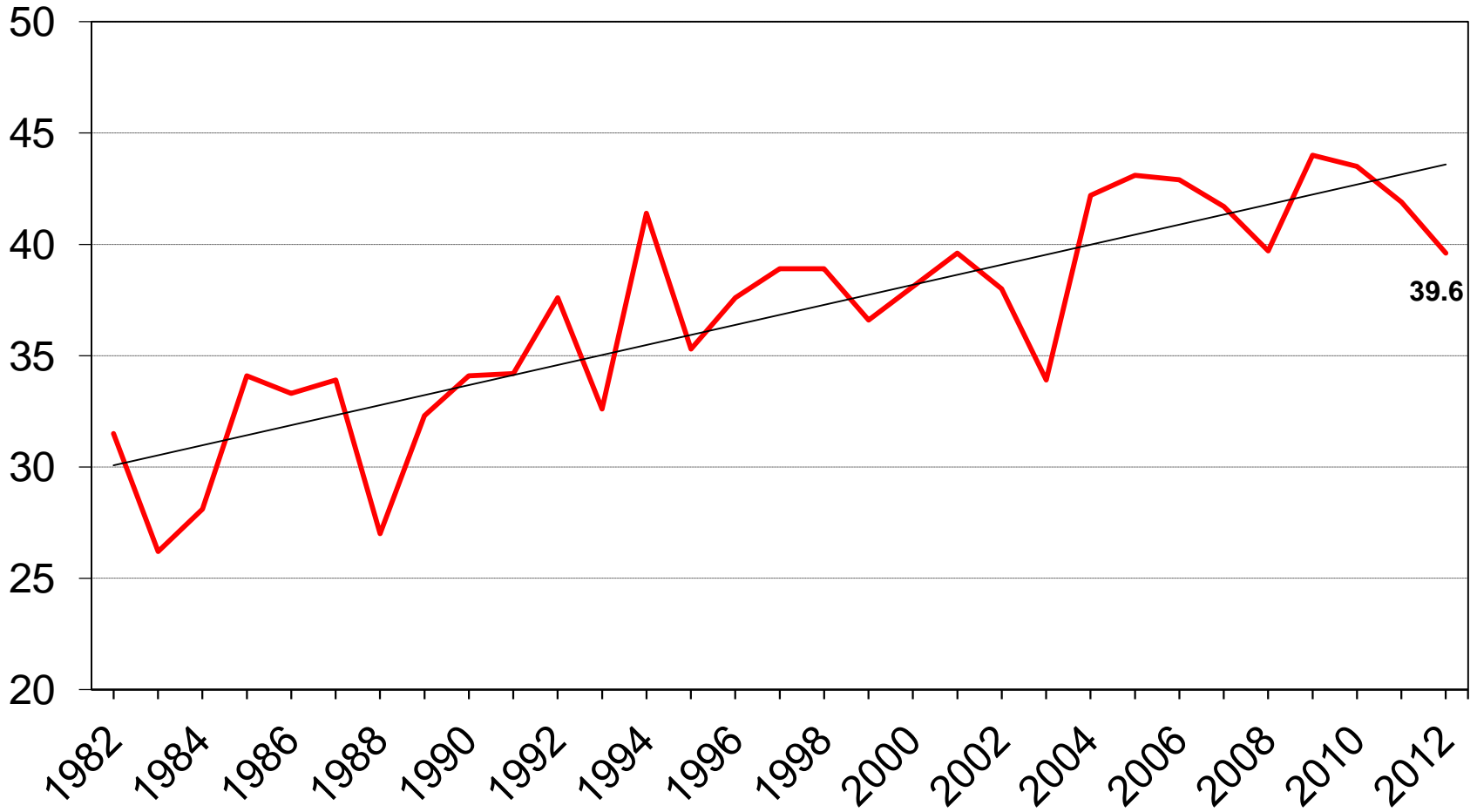
Crop	Unit	2012	% Change from Previous Forecast	% Change from Previous Season
Soybeans				
Planted	Mil Ac	77.2	- <0.1	+ 2.9
Harvested	Mil Ac	76.1	+ 0.5	+ 3.2
Yield	Bu/Ac	39.6	+ 0.8	- 5.5
Production	Bil Bu	3.01	+ 1.5	- 2.5
Dec Stocks	Bil Bu	1.97	---	- 17.1



U.S. Soybean Yield



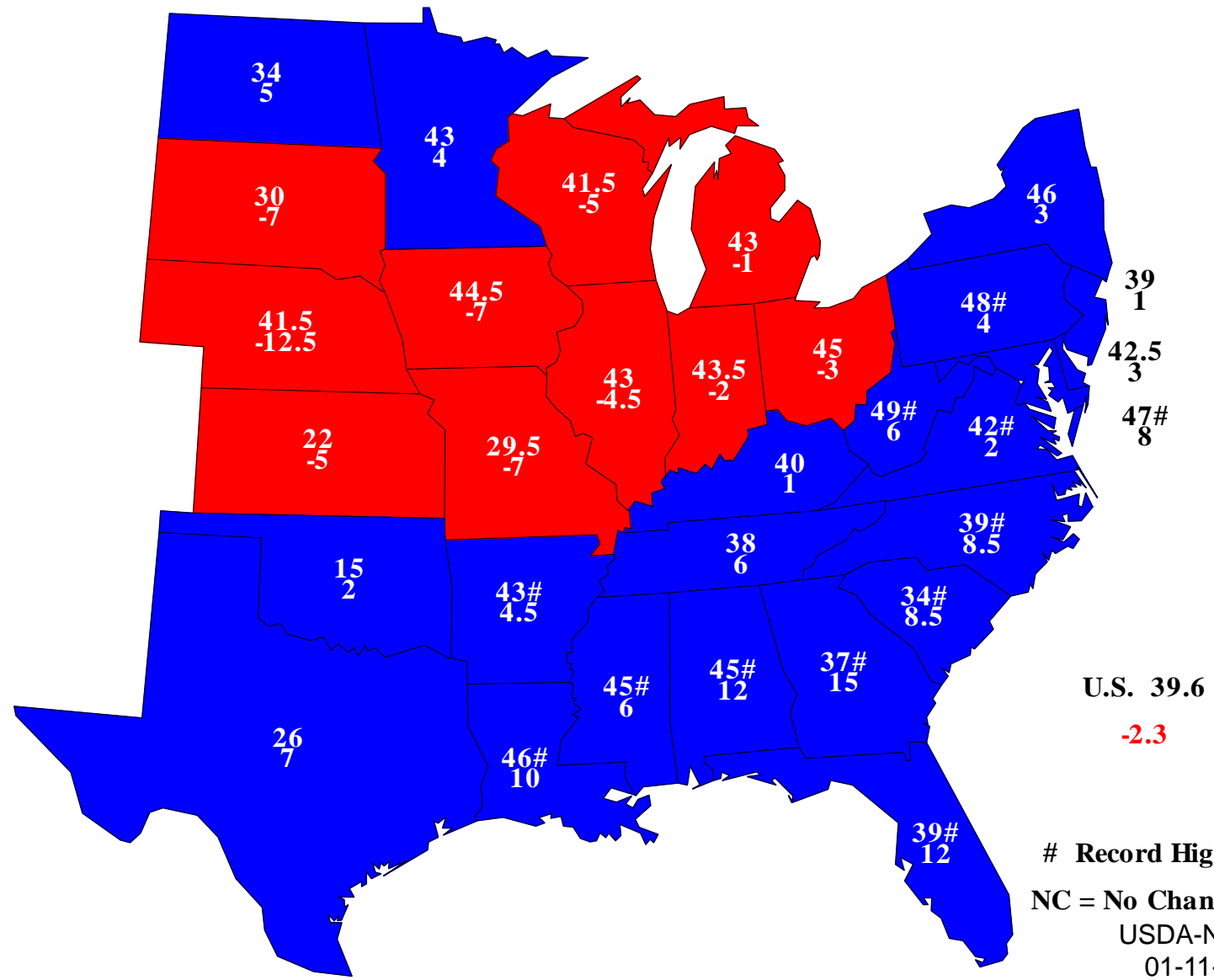
Bushels/acre



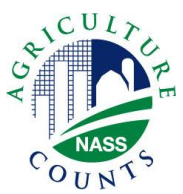


Soybean Yields, 2012

Bushels and Change From Previous Year



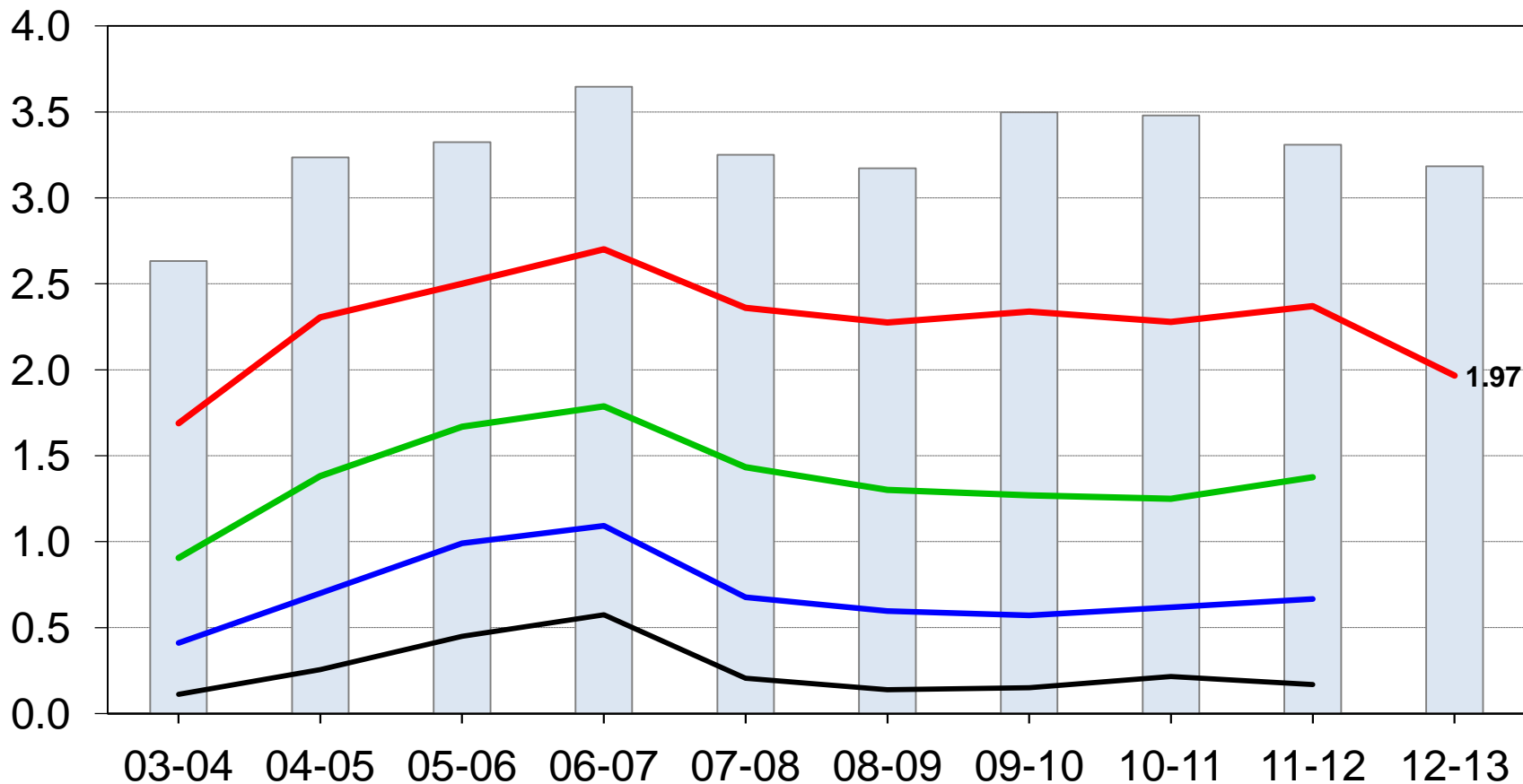
Record High
 NC = No Change
 USDA-NASS
 01-11-13

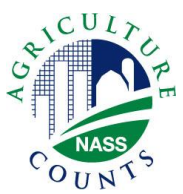


U.S. Soybean Stocks



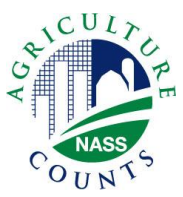
Billion bushels





Crop Production 2012 Annual

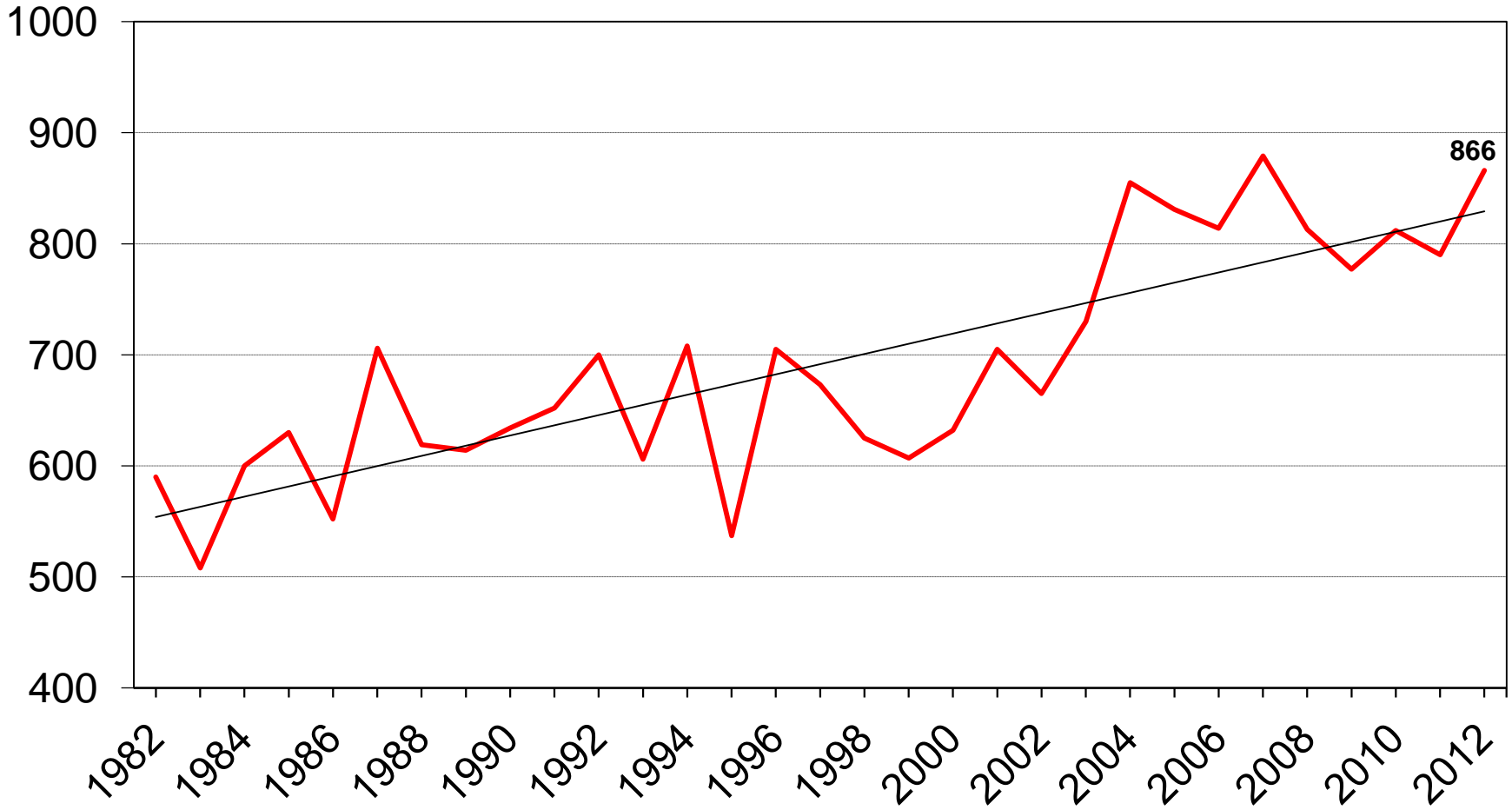
Crop	Unit	2012	% Change from Previous Forecast	% Change from Previous Season
All Cotton				
Planted	Mil Ac	12.3	- 0.4	- 16.4
Harvested	Mil Ac	9.43	- 9.7	- 0.4
Yield	Lbs/Ac	866	+ 9.2	+ 9.6
Production	Mil Bales	17.0	- 1.4	+ 9.2

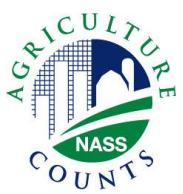


U.S. All Cotton Yield



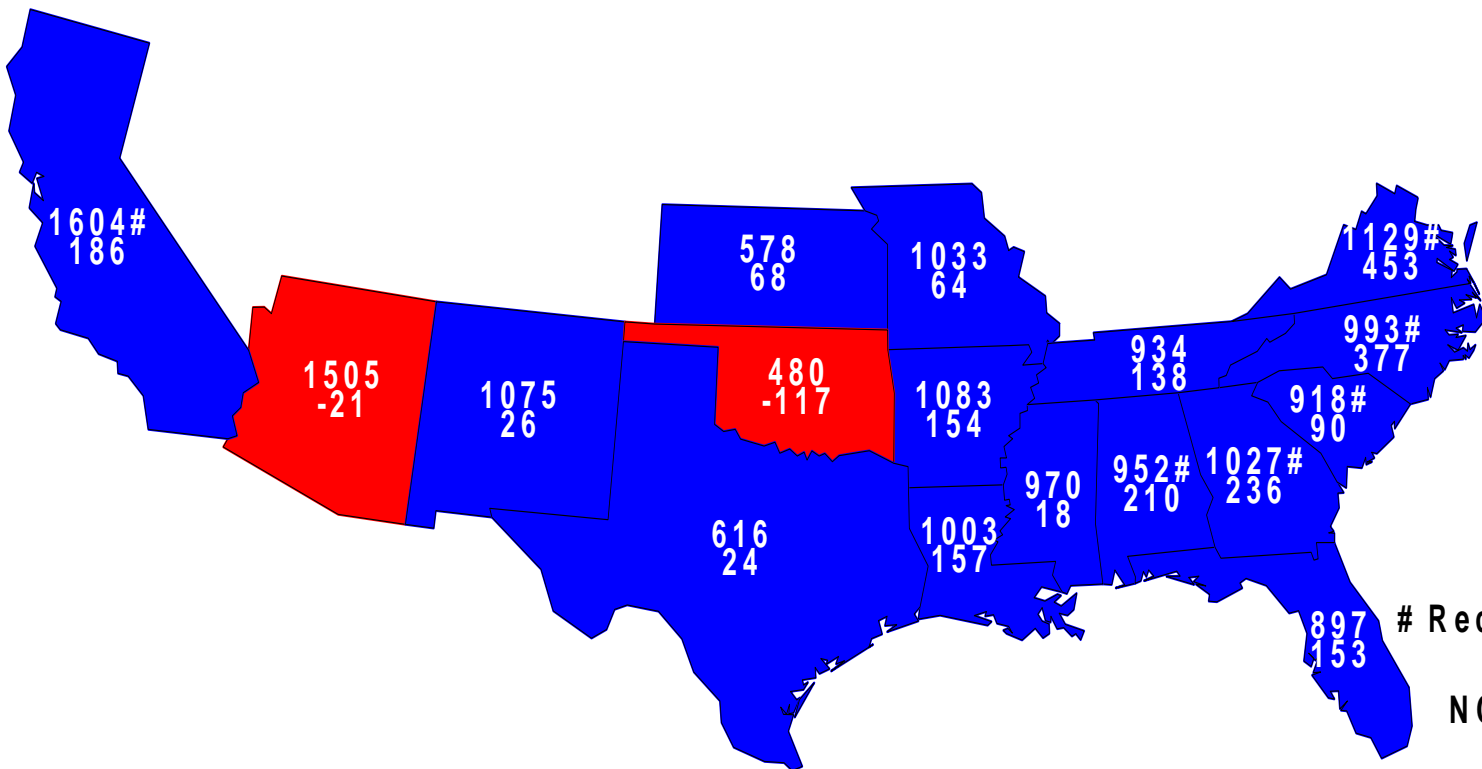
Pounds/acre





All Cotton Yield, 2012

Pounds and Change From Previous Year



U.S. 866
76

Record High Yield

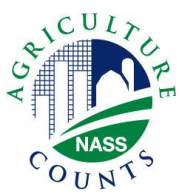
NC = No Change

USDA-NASS
01-11-13



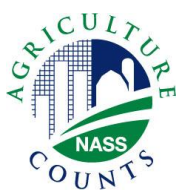
Crop Production 2012 Annual

Crop	Unit	2012	% Change from Previous Forecast	% Change from Previous Season
Sorghum				
Planted	Mil Ac	6.24	+ 0.1	+ 13.9
Harvested	Mil Ac	4.96	- 1.2	+ 26.1
Yield	Bu/Ac	49.8	- 2.5	- 8.8
Production	Mil Bu	247	- 3.6	+ 15.2
Dec Stocks	Mil Bu	139	---	- 7.9



Crop Production 2012 Annual

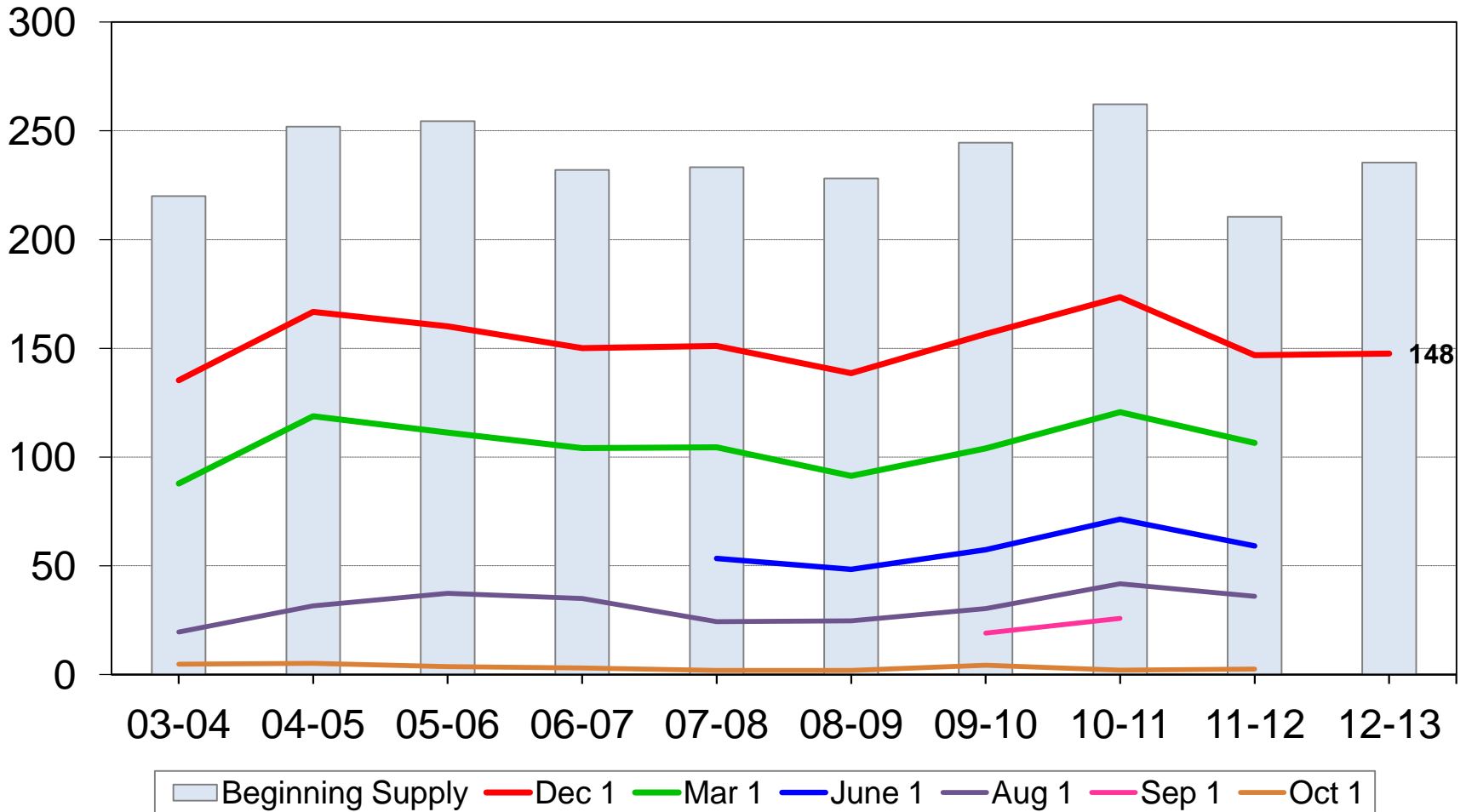
Crop	Unit	2012	% Change from Previous Forecast	% Change from Previous Season
Rice				
Planted	Mil Ac	2.70	NC	+0.4
Harvested	Mil Ac	2.68	+0.8	+2.3
Yield	Lbs/Ac	7,449	+0.4	+5.4
Production	Mil Cwt	199	+0.5	+7.9
Dec Stocks	Mil Cwt	148	---	+0.5

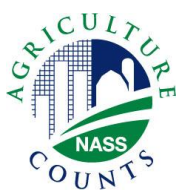


U.S. Rough Rice Stocks



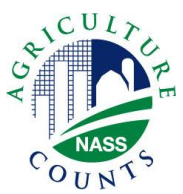
Million cwt





All Wheat Stocks

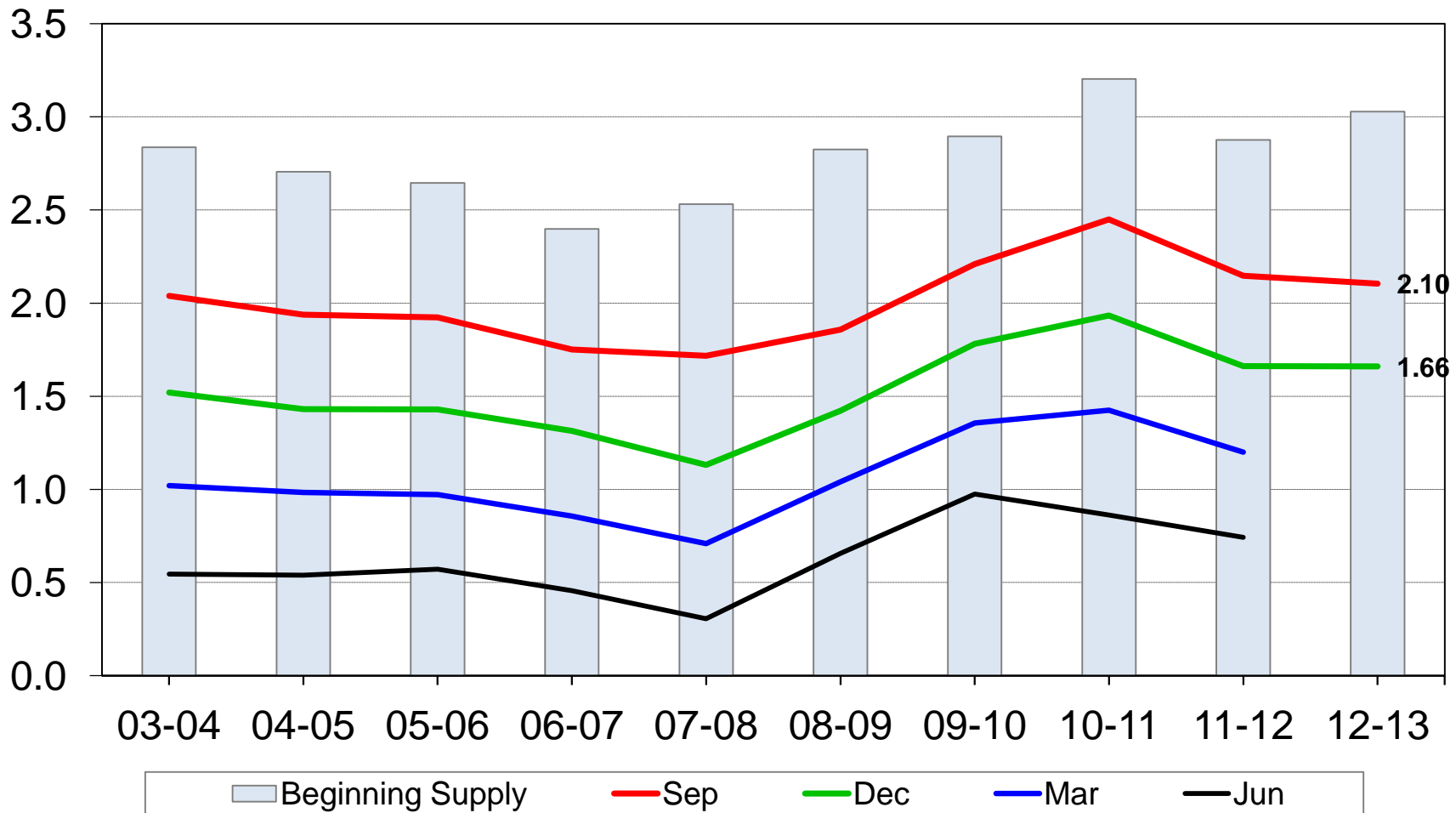
Crop	Unit	2012	% Change from Previous Forecast	% Change from Previous Season
All Wheat				
Dec Stocks	Bil Bu	1.66	---	- 0.2

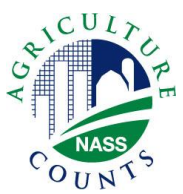


U.S. All Wheat Stocks



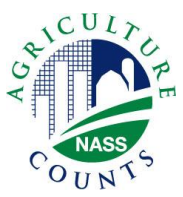
Billion bushels





Winter Wheat Seedings

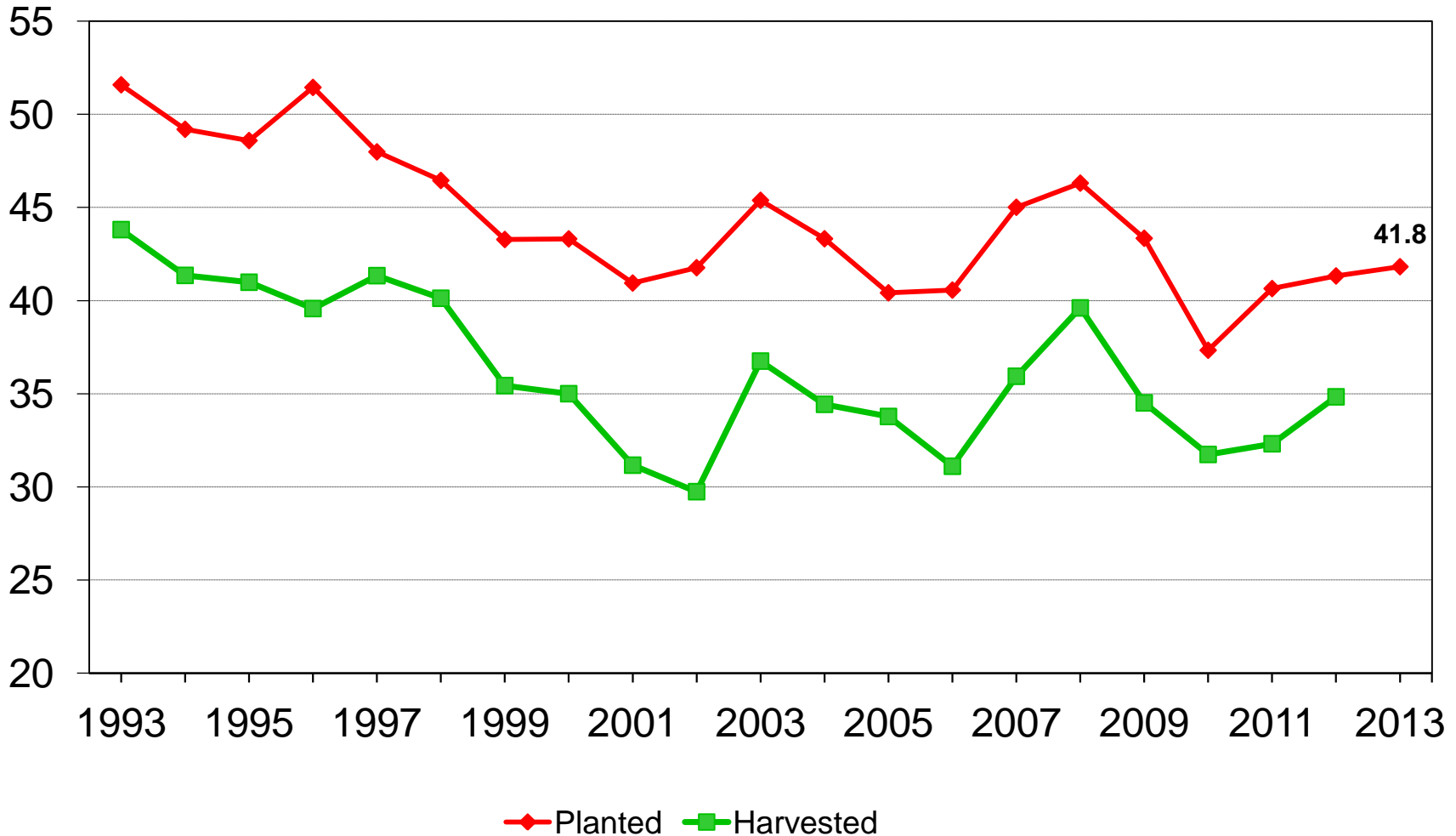
Crop	Unit	2013	% Change from Previous Forecast	% Change from Previous Season
Winter Wheat Seedings	Mil Ac	41.8	---	+ 1.2

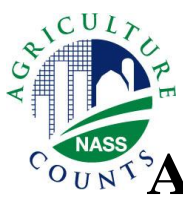


U.S. Winter Wheat Acres



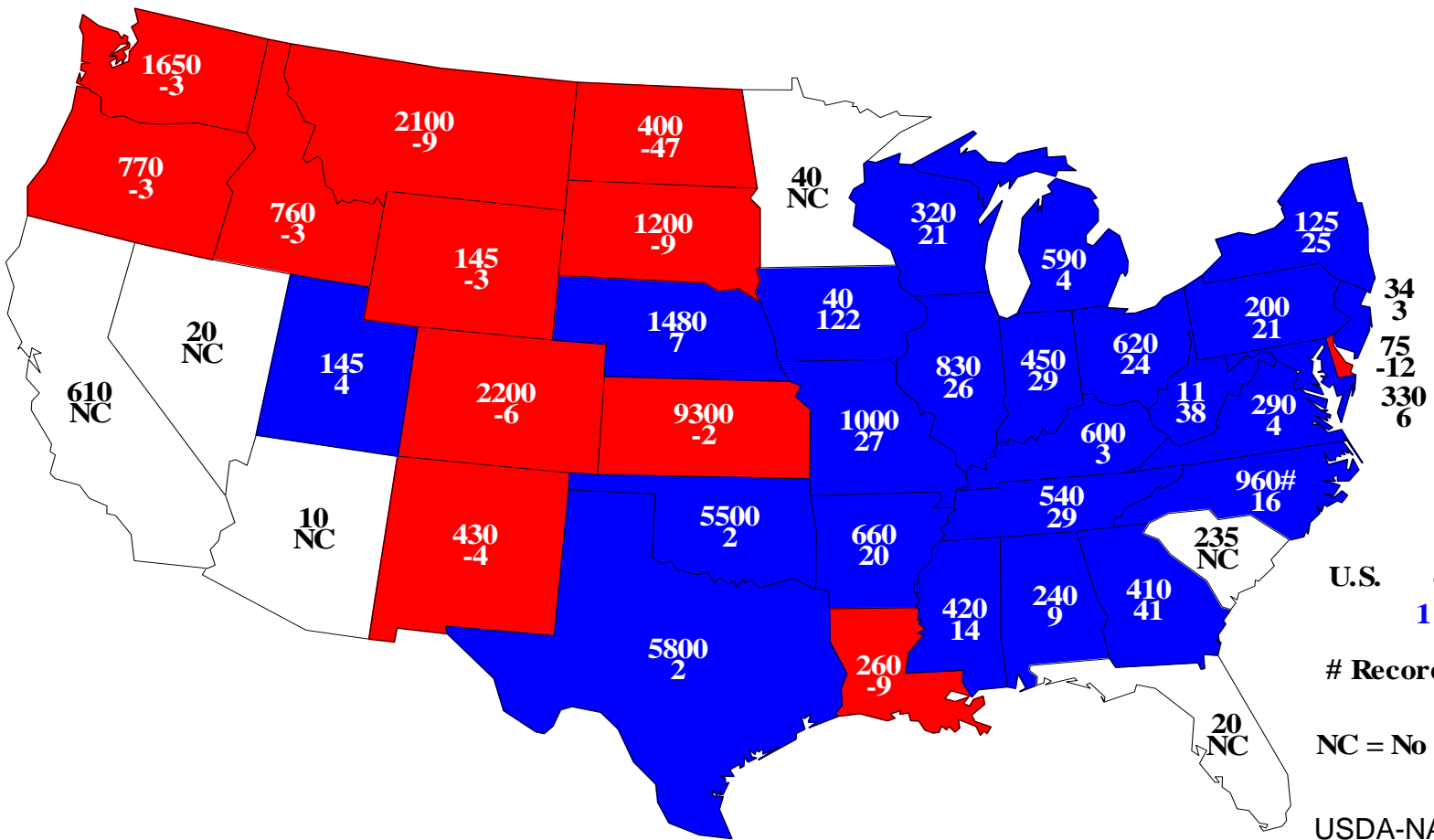
Million acres





Winter Wheat Planted, 2013

Acres(000) and Percent Change From Previous Year



U.S. 41,820
1

Record High

NC = No Change

USDA-NASS
01-11-13



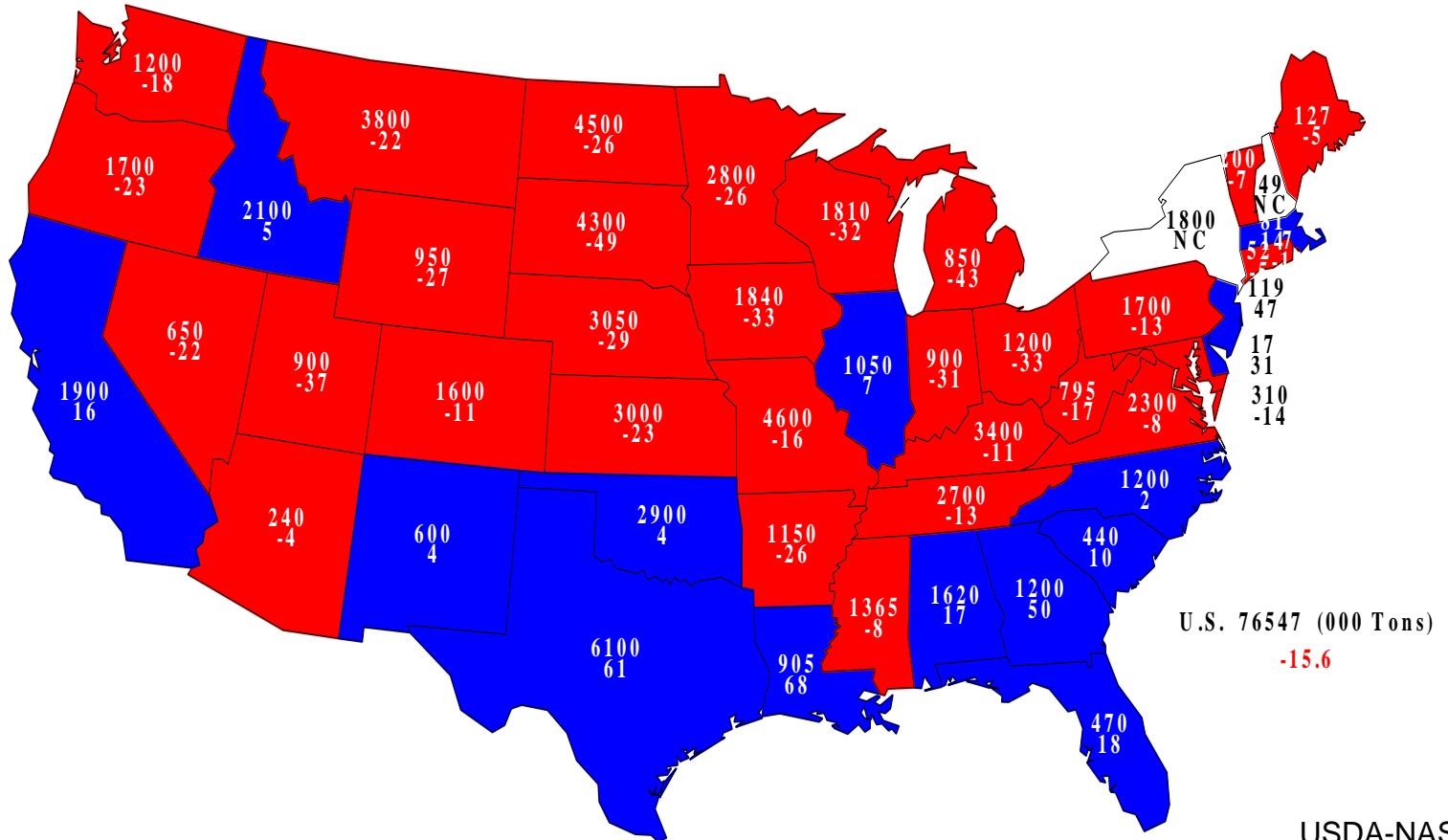
Crop Production 2012 Annual

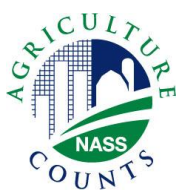
Crop	Unit	2012	% Change from Previous Forecast	% Change from Previous Season
All Hay				
Harvested	Mil Ac	56.3	- 2.3	+ 1.1
Yield	Tons/Ac	2.13	+ 0.5	- 9.7
Production	Mil Tons	120	- 1.7	- 8.6
Dec Stocks	Mil Tons	76.5	---	- 15.6



2012 All Hay Stocks

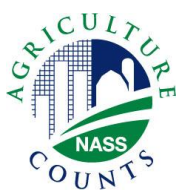
Stocks (000) and Percent Change From Previous Year





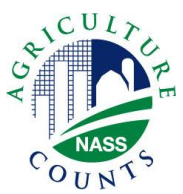
Crop Production 2012 Annual

Crop	Unit	2012	% Change from Previous Forecast	% Change from Previous Season
Sugarcane	Mil Tons	32.6	+ 1.6	+ 11.7
Sugarbeets	Mil Tons	35.2	+ 0.8	+ 21.9
Peanuts	Bil Lbs	6.74	+ 4.2	+ 84.3
Sunflowers	Bil Lbs	2.79	+ 13.3	+ 36.7
Canola	Bil Lbs	2.45	- 1.5	+ 59.1



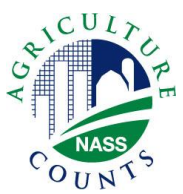
Crop Production 2012 Annual

Crop	Unit	2012	% Change from Previous Forecast	% Change from Previous Season
Mustard Seed	Mil Lbs	29.9	---	+ 91.3
Safflower	Mil Lbs	179	---	+ 5.7
Flaxseed	Mil Bu	5.76	---	+ 106.4
Rapeseed	Mil Lbs	4.63	---	+ 63.6
Proso Millet	Mil Bu	3.09	---	- 66.2



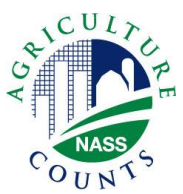
Crop Production 2012 Annual

Crop	Unit	2012	% Change from Previous Forecast	% Change from Previous Season
Dry Edible Beans	Mil Cwt	31.9	+ 0.5	+ 60.5
Lentils	Mil Cwt	5.30	+ 0.9	+ 12.0
Peas				
Austrian Winter	Thou Cwt	167	+ 13.6	- 7.2
Dry Edible	Mil Cwt	10.9	- 5.1	+ 93.3
All Potatoes	Mil Cwt	467	+ <0.1	+ 8.7
Sweet Potatoes	Mil Cwt	26.5	---	- 1.8
Tobacco	Mil Lbs	762	- 2.3	+ 27.4



January 2013 Crop Production

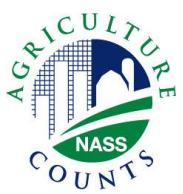
Crop	Unit	January 2013	% Change from Previous Forecast	% Change from Previous Season
Oranges	Mil Tons	8.83	- 2.0	- 2.0
Grapefruit	Mil Tons	1.14	NC	- 2.8
Lemons	Thou Tons	892	+ 0.5	+ 4.9
Tangelos	Thou Tons	50.0	NC	- 3.8
Tangerines and Mandarins	Thou Tons	661	NC	+ 2.0



United States Department of Agriculture
National Agricultural Statistics Service

Upcoming Reports

Jan 25	Cotton Ginnings
Jan 29	Vegetables – Annual
Jan 31	Agricultural Prices
Feb 1	Cattle Sheep and Goats
Feb 8	Crop Production
Feb 15	Crop Values
Feb 19	Farms, Land in Farms, and Livestock Operations



United States Department of Agriculture
National Agricultural Statistics Service



All Reports Available At

www.nass.usda.gov

For Questions

202-720-2127

800-727-9540

nass@nass.usda.gov