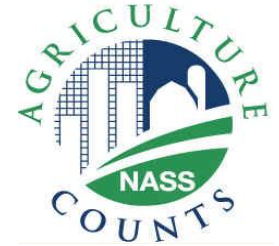




United States Department of Agriculture
National Agricultural Statistics Service



HOGS & PIGS INVENTORY

Executive Briefing

December 1, 2012

December Hogs and Pigs

Data Collection Period

November 30 - December 13

Sample Size

10,390

Collection Methods

Phone, mail, internet, and personal interview

Primary Data Items

- Total inventory: by class, weight group, and quarter
- Sows farrowing, pig crop, and pigs per litter

U.S. Hogs & Pigs Revisions

		Initial Estimate	Previous Revision	Current Revision	Net Revision	Current Estimate
--	--	-------------------------	--------------------------	-------------------------	---------------------	-------------------------

Jun 2012	All Hogs and Pigs	65.8 million	-70,000 -0.1%	+900,000 +1.4%	+830,000 +1.3%	66.7 million
	Pig Crop	29.4 million		+636,000 +2.2%	+636,000 +2.2%	30.1 million
Sep 2012	All Hogs and Pigs	67.5 million		+230,000 +0.3%		67.7 million



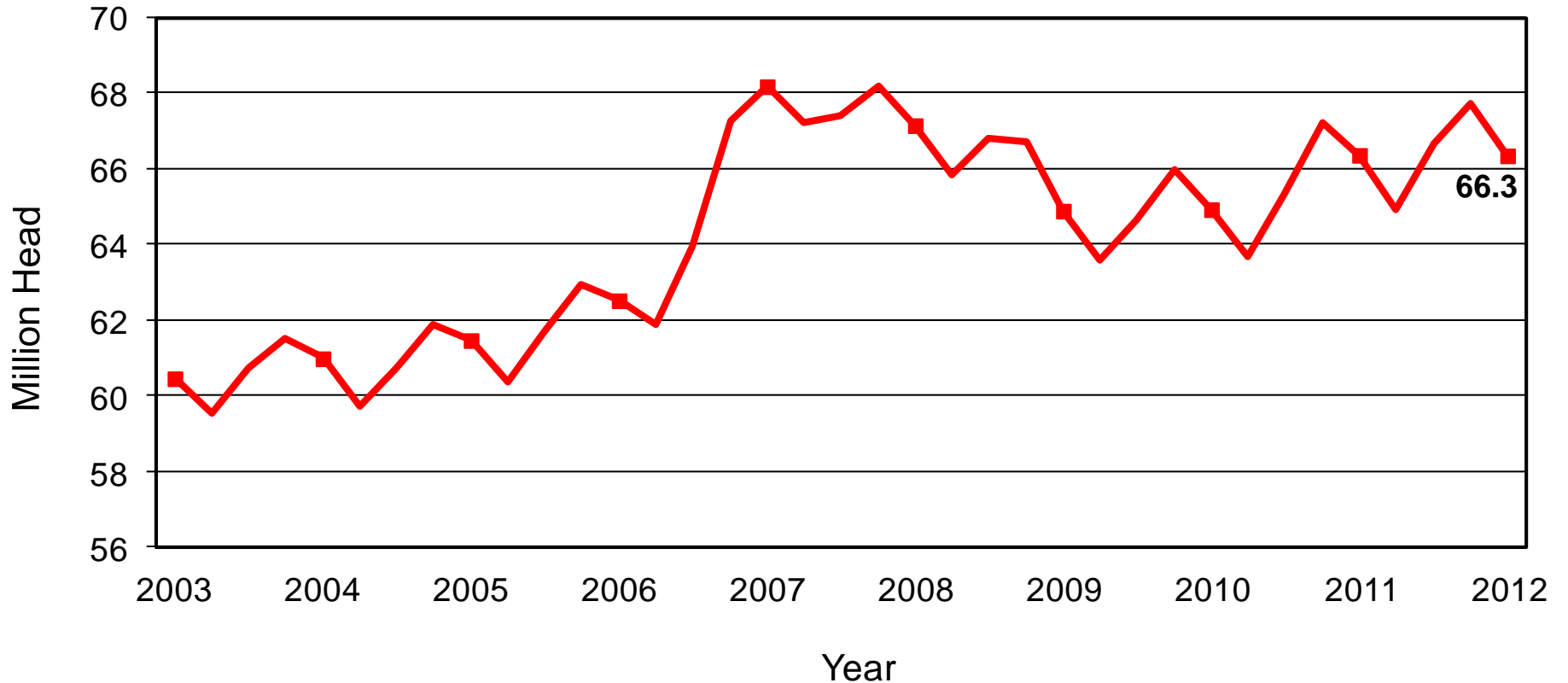
U.S. Hogs & Pigs Inventory December 1, 2012



Inventory Items	(000) Hd	% PY
All Hogs & Pigs	66,348	100%
Breeding Hogs	5,817	100%
Market Hogs	60,531	100%
Sep – Nov Pig Crop	29,443	100%
Sows Farrowing	2,900	99%
Litter Rate	Number	% PY
Sep – Nov 2012	10.15	101%
Farrowing Intentions	(000) Hd	% PY
Dec 2012 – Feb 2013	2,865	100%
Mar – May 2013	2,925	98%

U.S. Quarterly Hogs and Pigs Inventory

December 1, 2012

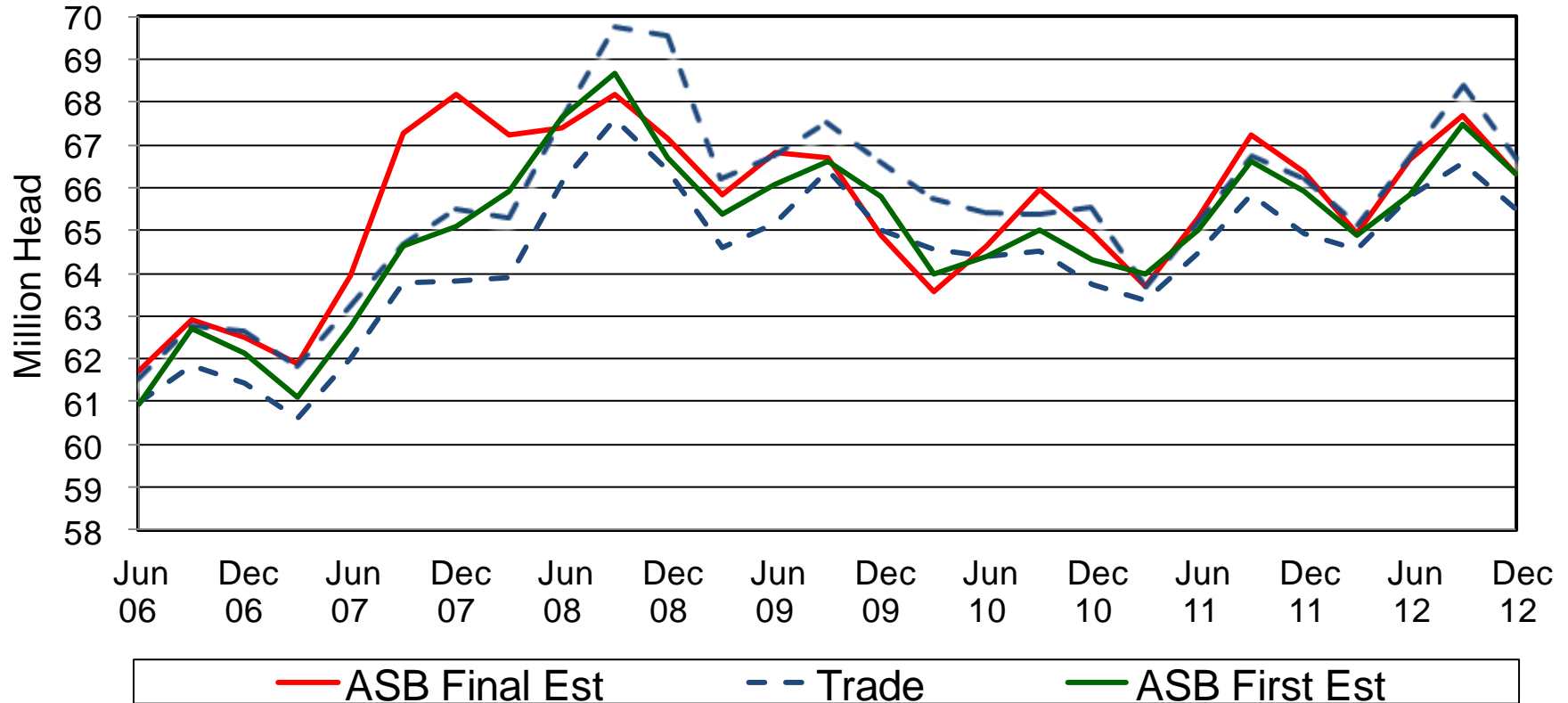




NASS Estimates Compared to Trade Expectations Percent of Previous Year

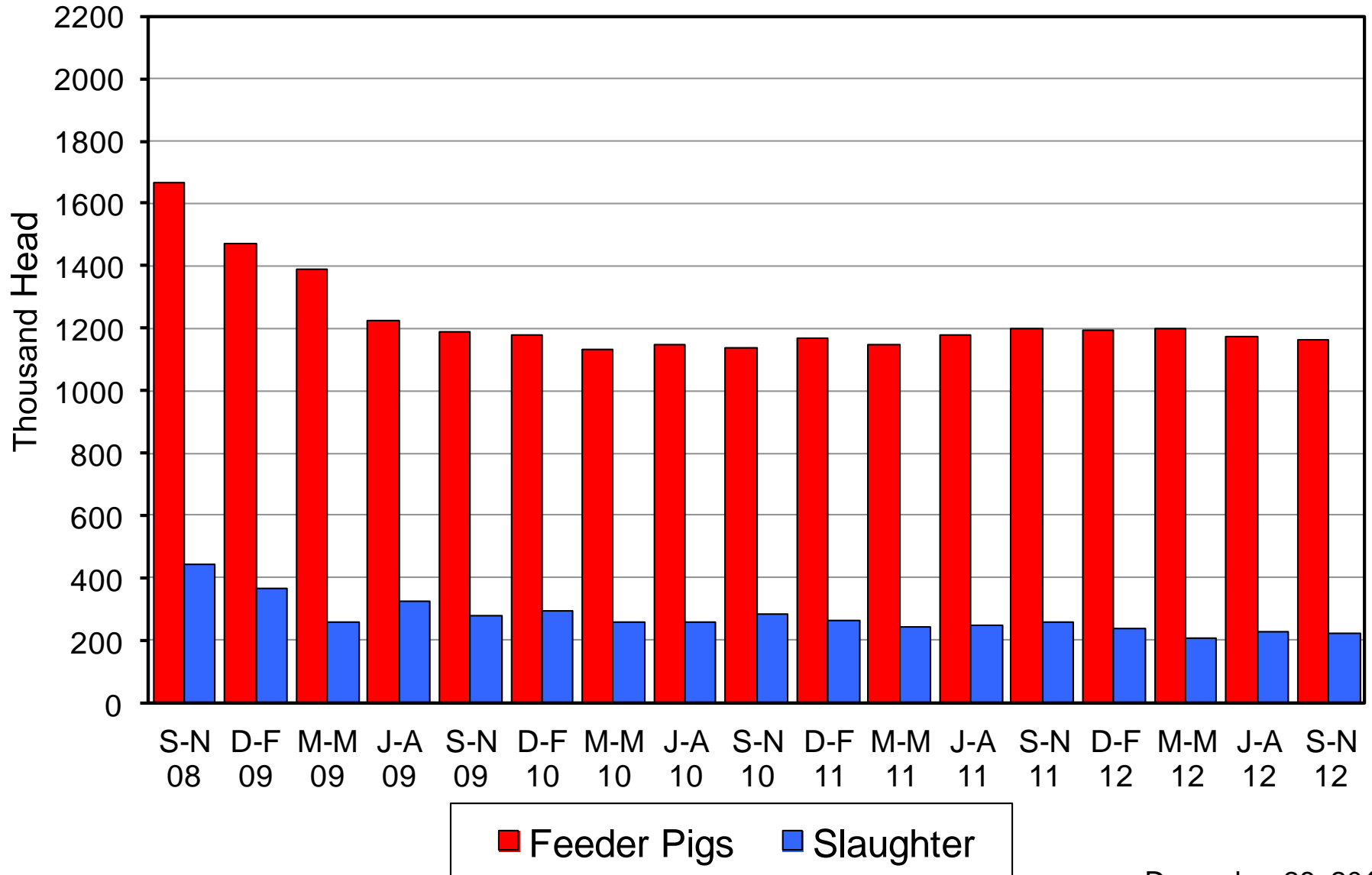
Inventory Items	NASS Estimate	Trade Average	Trade Range
All Hogs & Pigs	100.0%	99.1%	98.7% – 100.4%
Breeding Hogs	100.2%	99.3%	99.1% – 99.5%
Market Hogs	100.0%	99.1%	98.7% – 100.5%
Sept – Nov Pig Crop	100.3%	99.0%	98.3% – 100.8%
Farrowing Intentions			
Dec 2011– Feb 2012	100.0%	98.4%	96.6% – 99.0%
Mar – May 2012	98.1%	98.8%	96.6% – 100.3%

All Hogs and Pigs Board vs Trade Expectations

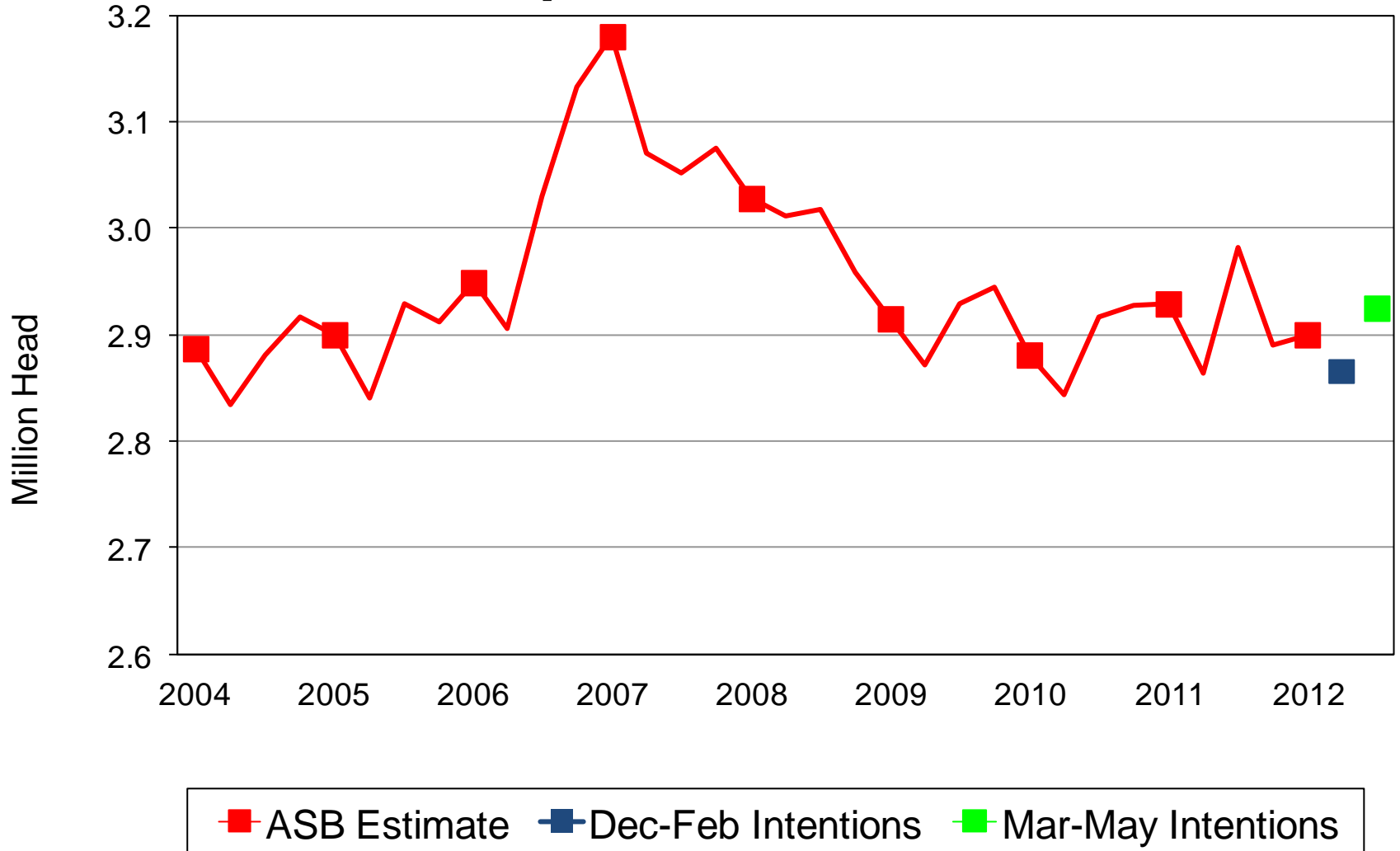


Canadian Imports by Quarter

Feeder Pigs and Slaughter Hogs



U.S. Quarterly Sows Farrowed September - November



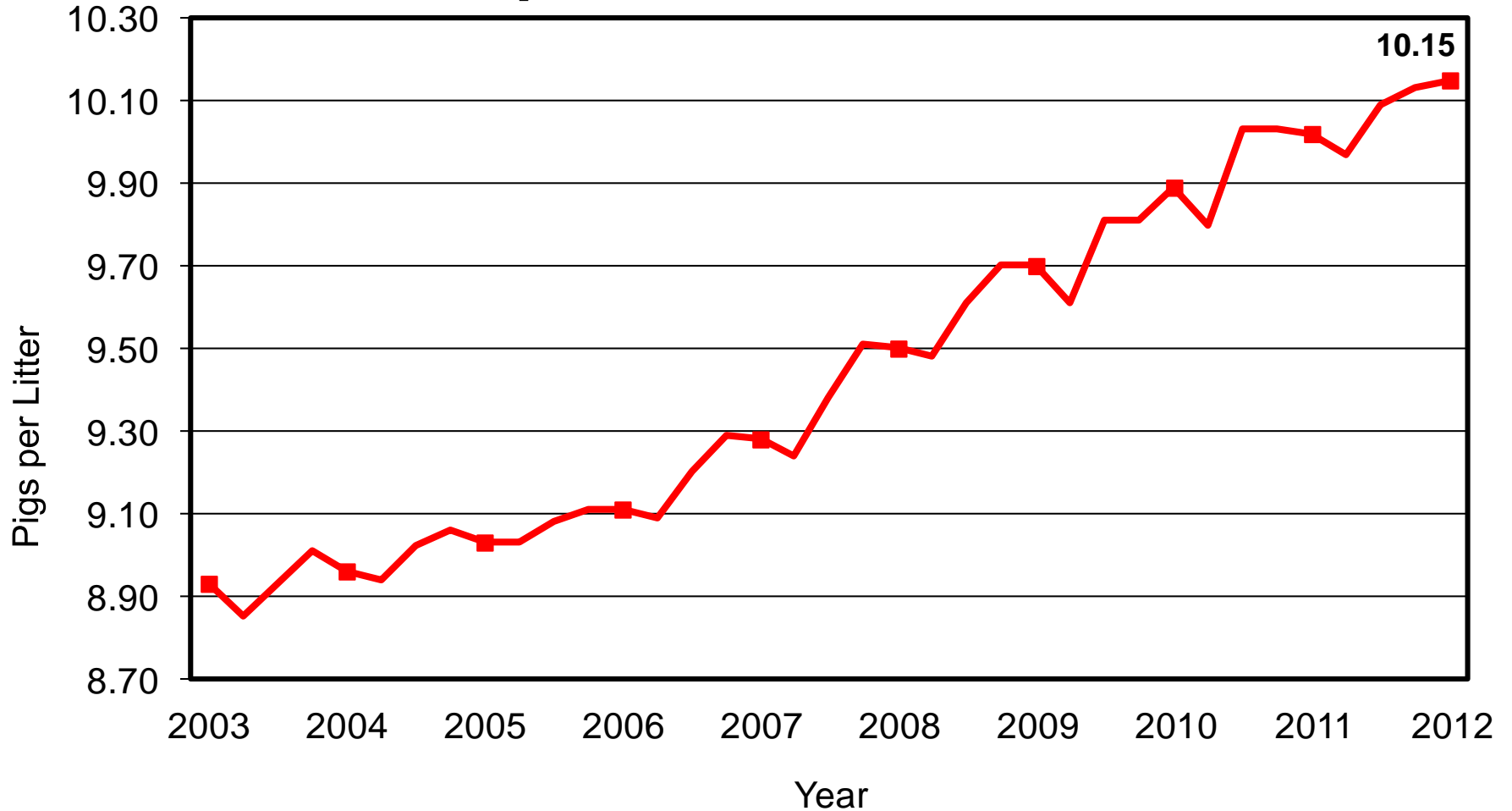


Breeding Herd Inventory Disposition & Utilization

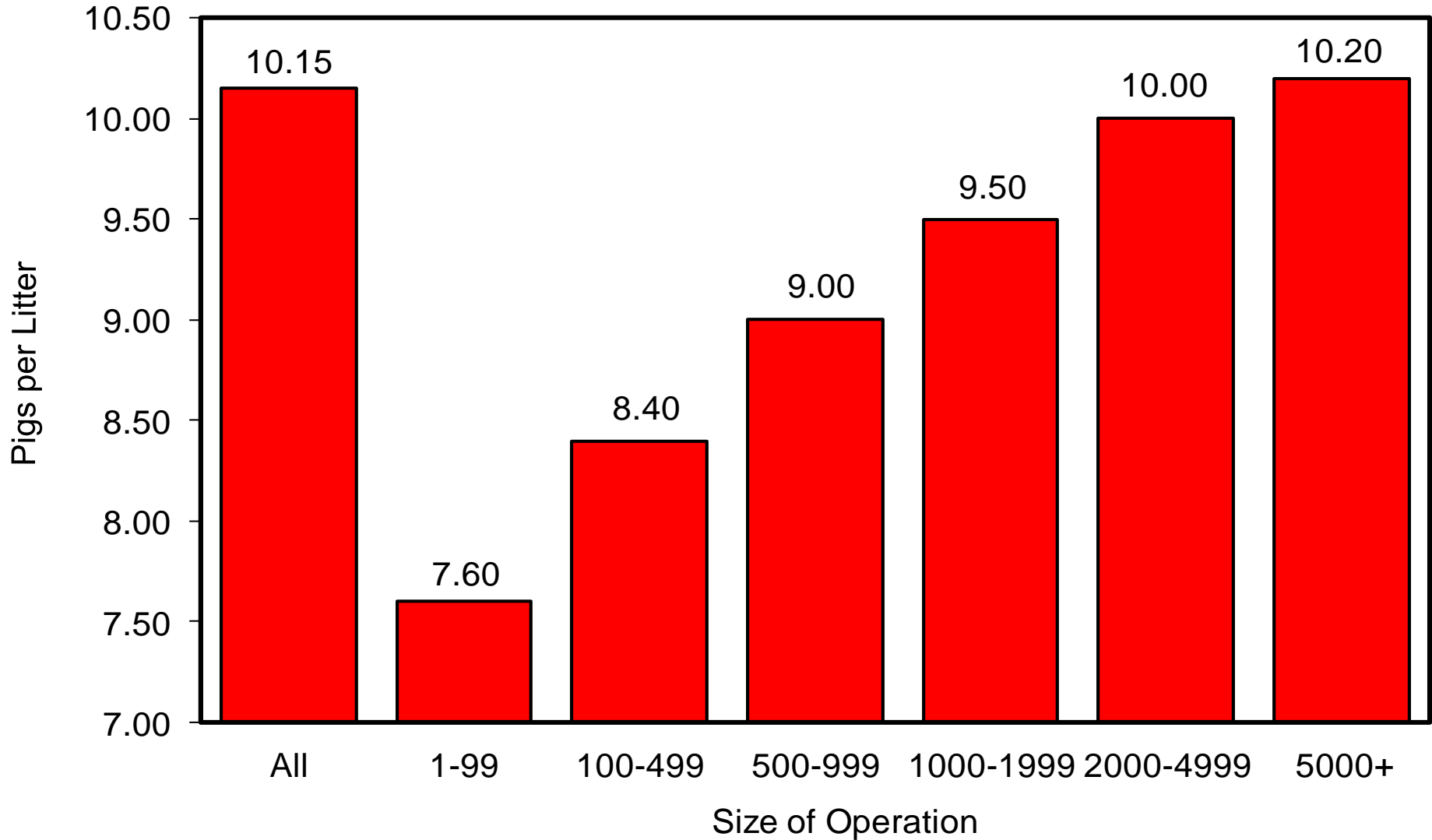


Year	Sep 1 Estimate	Slaughter	Additions	Dec 1 Estimate	Sow Utilization
	(000) Hd	(000) Hd	(000) Hd	(000) Hd	Percent
2003	5,948	872	943	6,019	48%
2004	5,972	875	883	5,980	48%
2005	5,993	866	904	6,031	48%
2006	6,099	947	965	6,116	48%
2007	6,208	976	1,001	6,233	51%
2008	6,061	964	965	6,062	50%
2009	5,875	941	917	5,850	50%
2010	5,770	849	858	5,778	50%
2011	5,806	880	877	5,803	51%
2012	5,788	888	917	5,817	50%

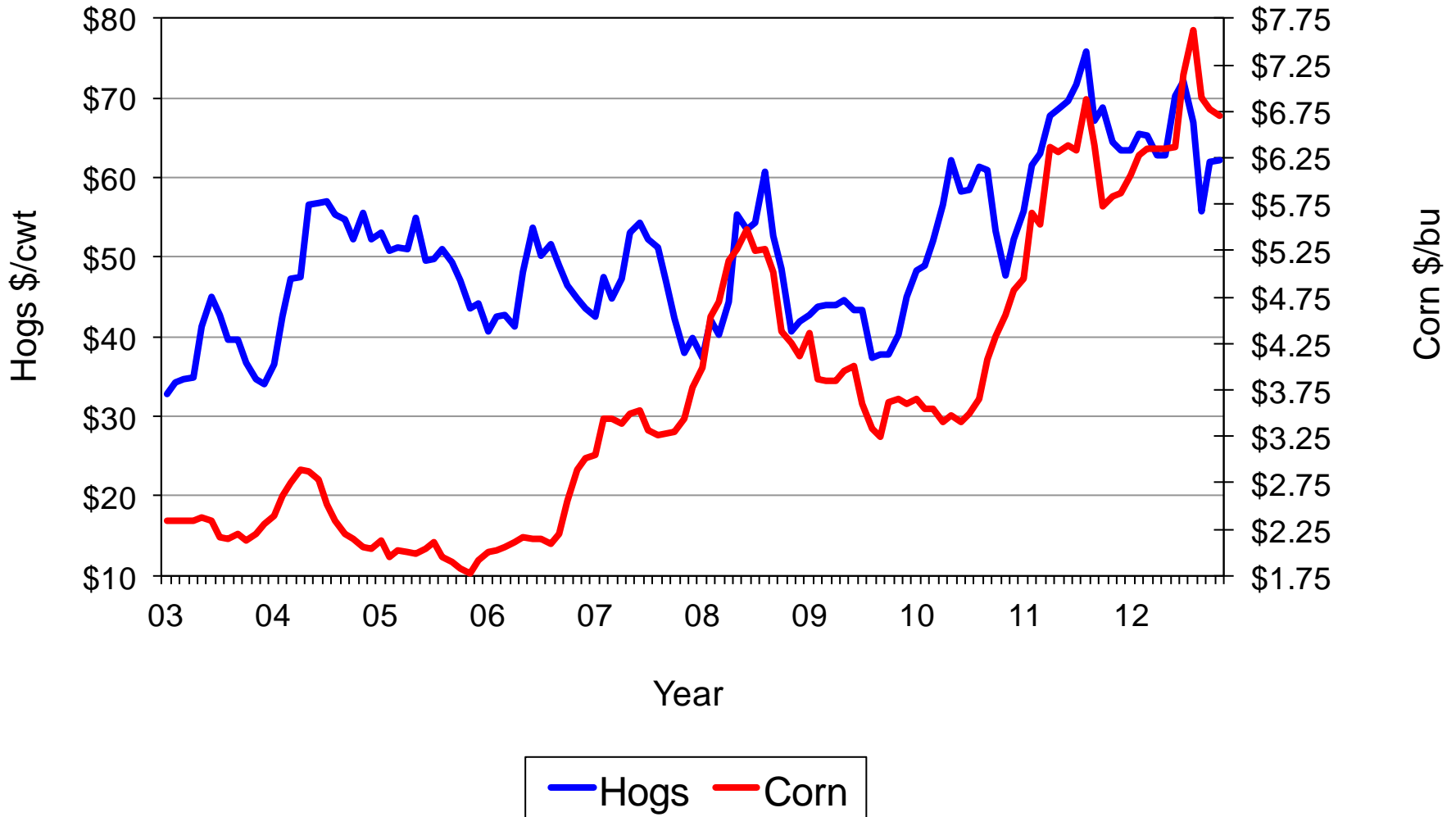
U.S. Quarterly Pigs per Litter September - November



U.S. Pigs per Litter by Size of Operation September – November 2012

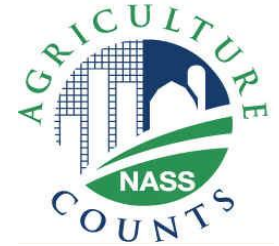


U.S. Prices Received by Farmers for Hogs & Corn





United States Department of Agriculture
National Agricultural Statistics Service

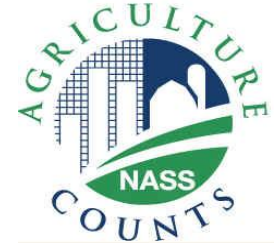


Upcoming Reports

December 31	Agricultural Prices
January 11	Grain Stocks, Crop Production
January 25	Cattle on Feed
February 1	Cattle, Sheep and Goats



United States Department of Agriculture
National Agricultural Statistics Service



All Reports Available At
www.nass.usda.gov

For Questions Call or Email

202-720-3570

800-727-9540

nass@nass.usda.gov