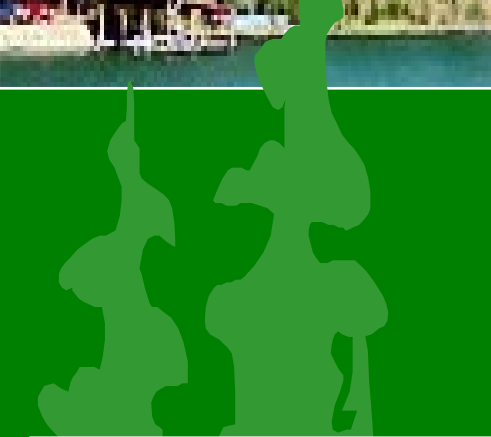


East Shore Fuels Reduction Project Collaboration



Flathead National Forest
Swan Lake Ranger District

Flathead Lake







Cherry Orchards



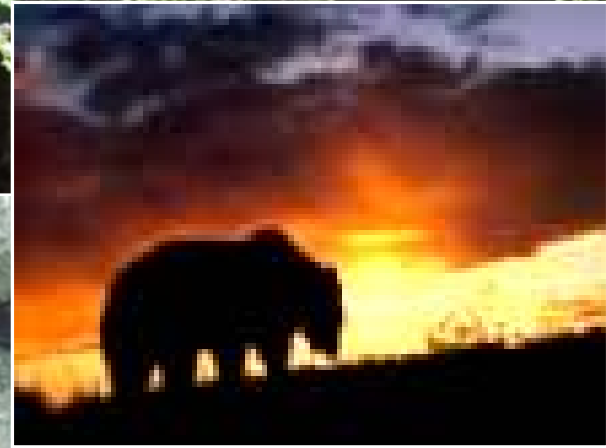


Unique Features

- Scenic Background & Views of Flathead Lake
- Bear Dance Picnic Site
- Water Use - Domestic & Agriculture
- Agriculture - Cherry Orchards
- Recreation (Hiking, Hunting, Horseback Riding, ATV & Snowmobile Use, Rock Climbing, Berry Picking, Firewood Gathering, etc.)
- Research Natural Area - RNA
- Existing Large Old Ponderosa Pine and Larch



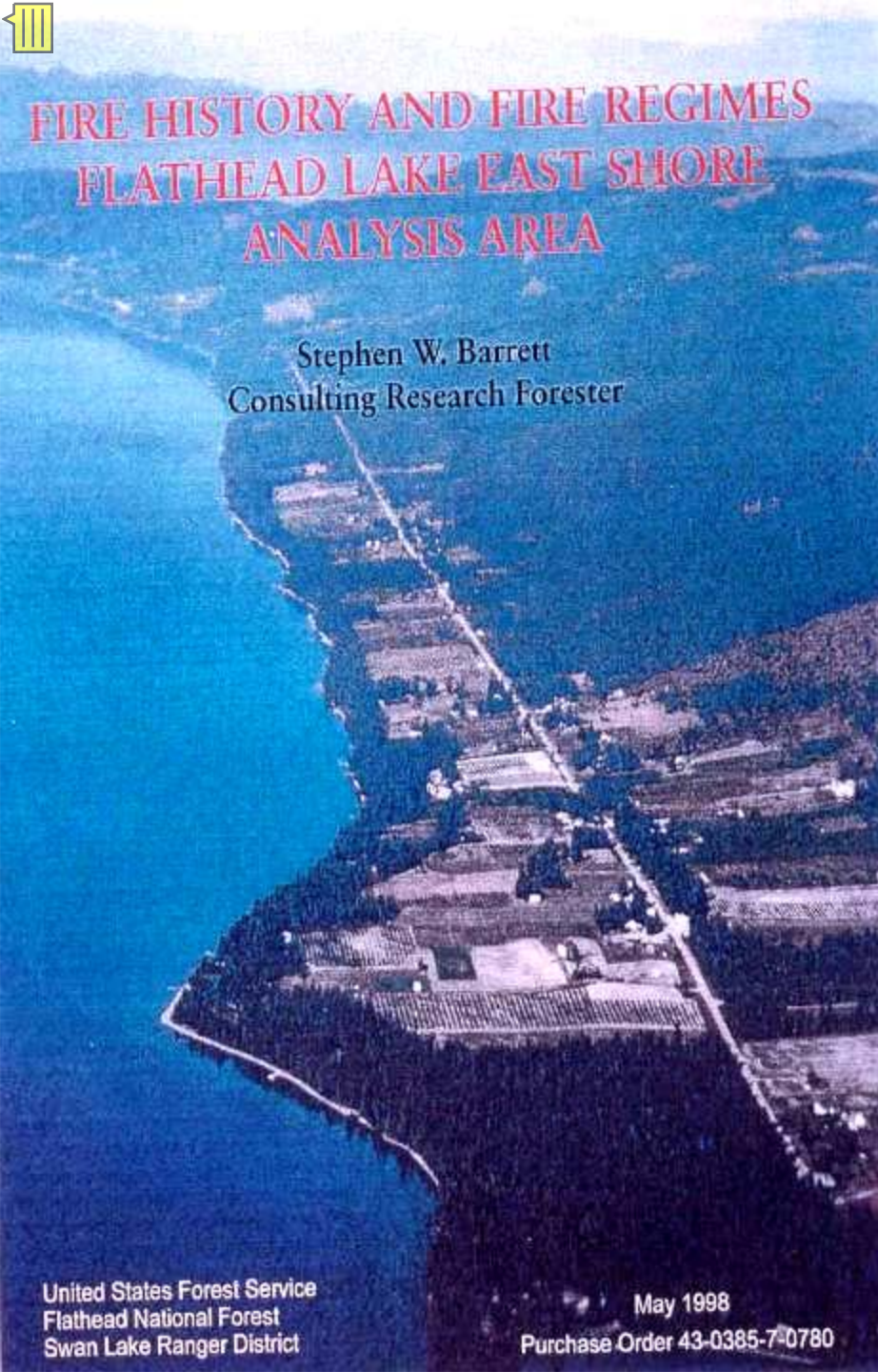
Wildlife





FIRE HISTORY AND FIRE REGIMES FLATHEAD LAKE EAST SHORE ANALYSIS AREA

Stephen W. Barrett
Consulting Research Forester



United States Forest Service
Flathead National Forest
Swan Lake Ranger District

May 1998
Purchase Order 43-0385-7-0780

Fire History



Parker Gunderson 8/20



Daphne

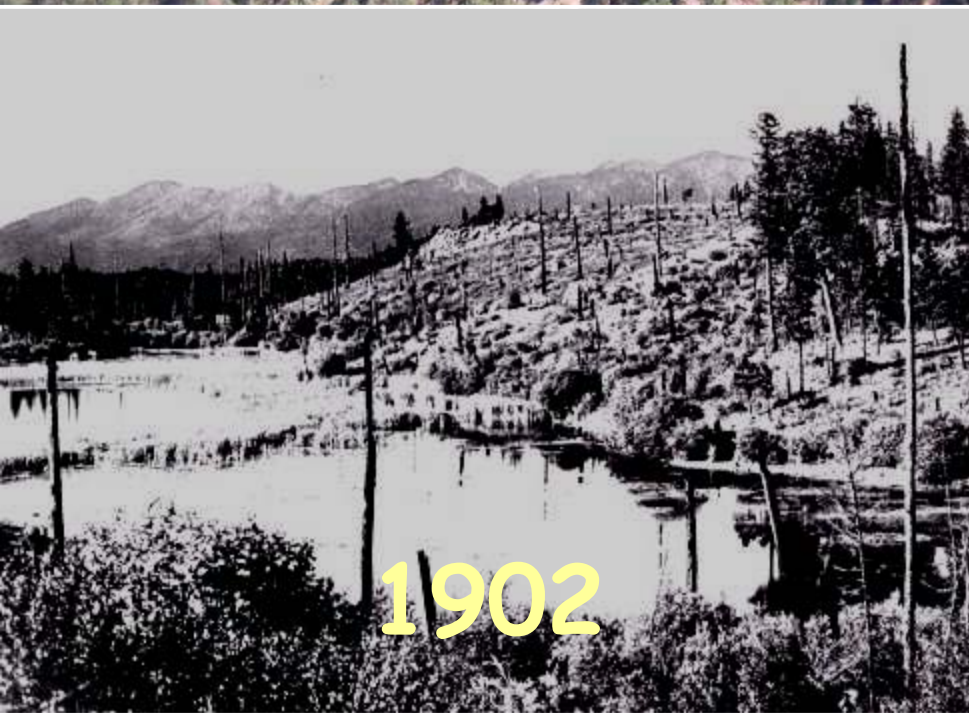


Present

Pond



1981



1902

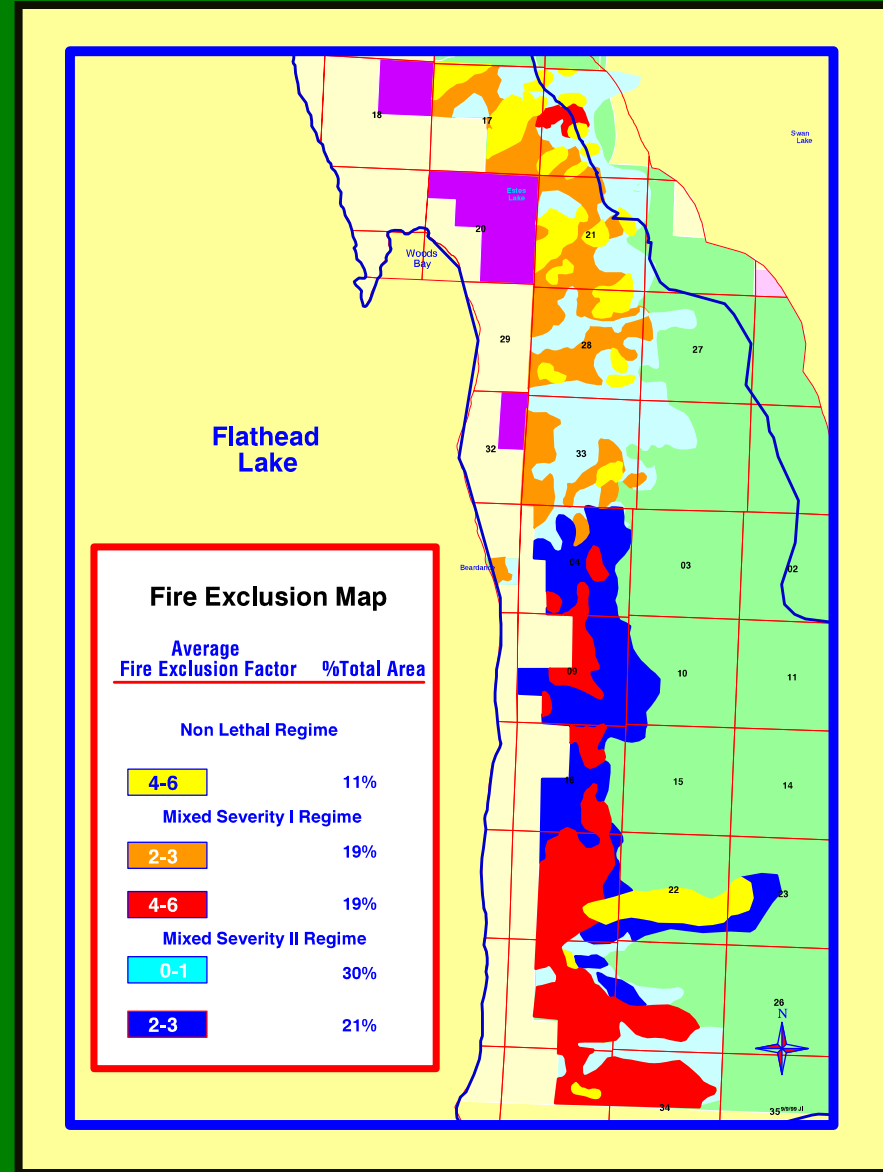


1965

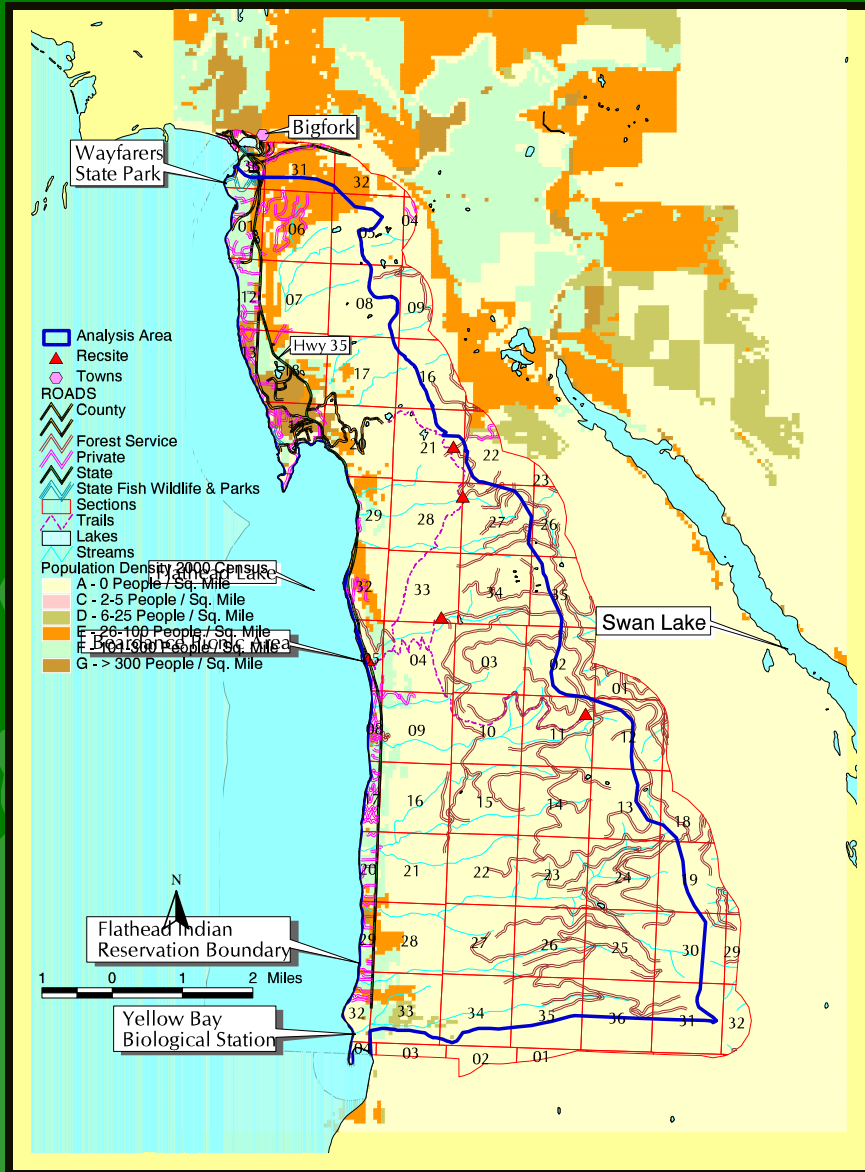
Fire Exclusion Factor



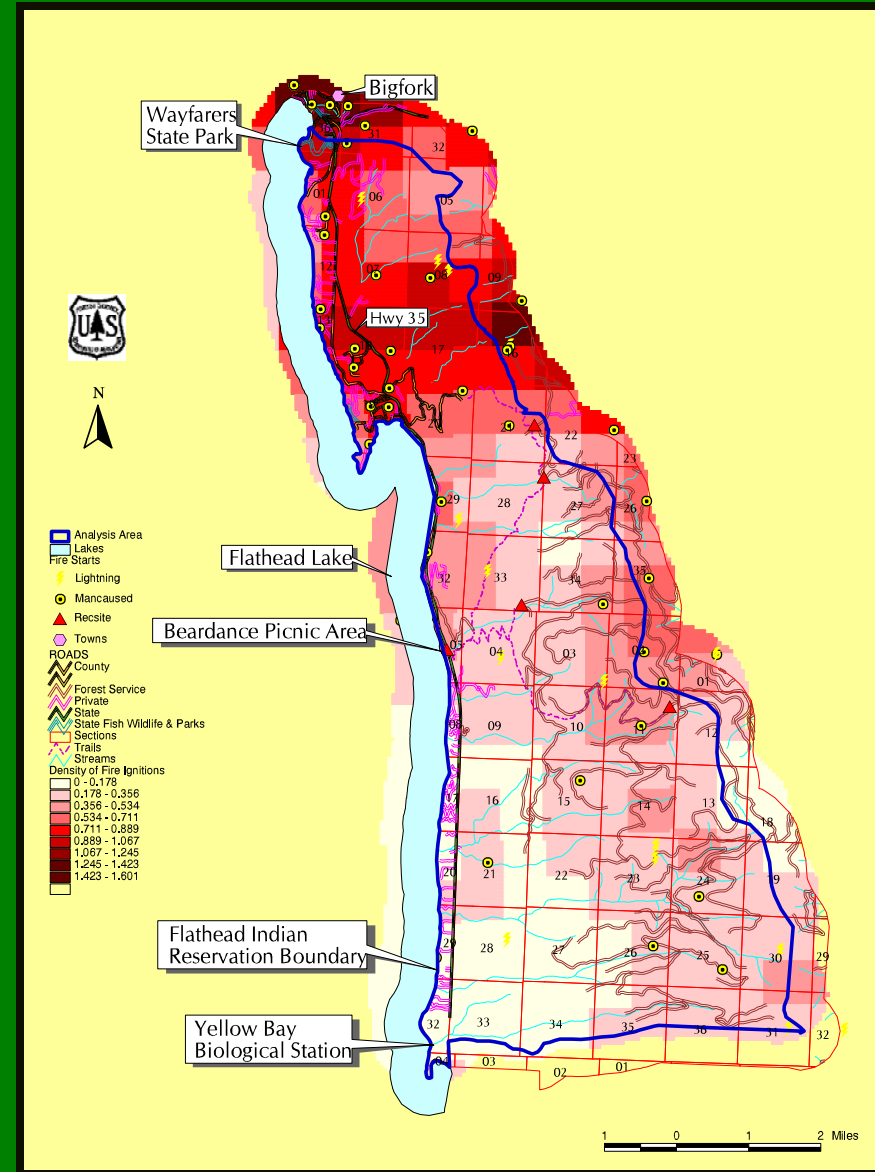
Ponderosa Pine
Fire Scar Quarter Sample



Population Density

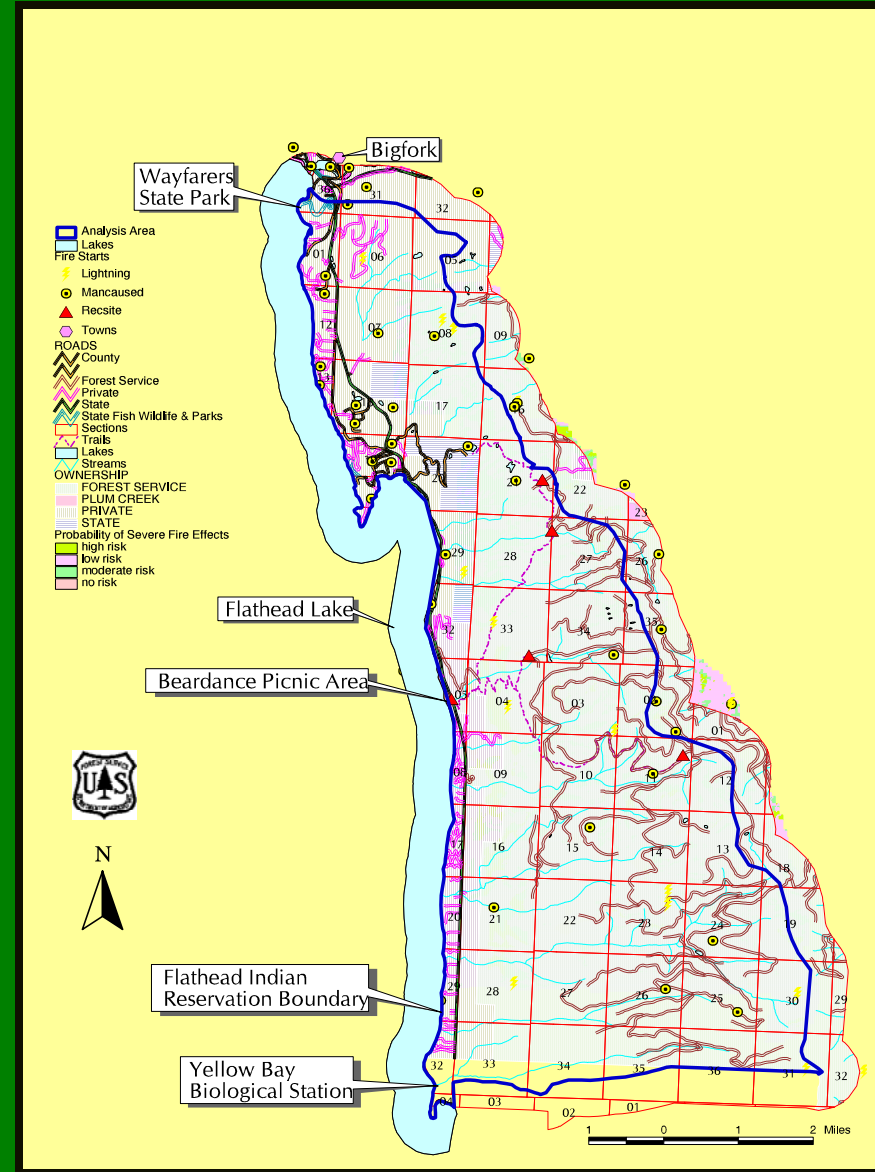


Fire Ignition Density

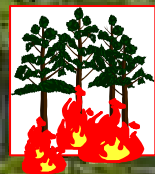


Crown Fire Potential

Probability of Severe Fire Fx



Crown Fire Potential



Un-Treated



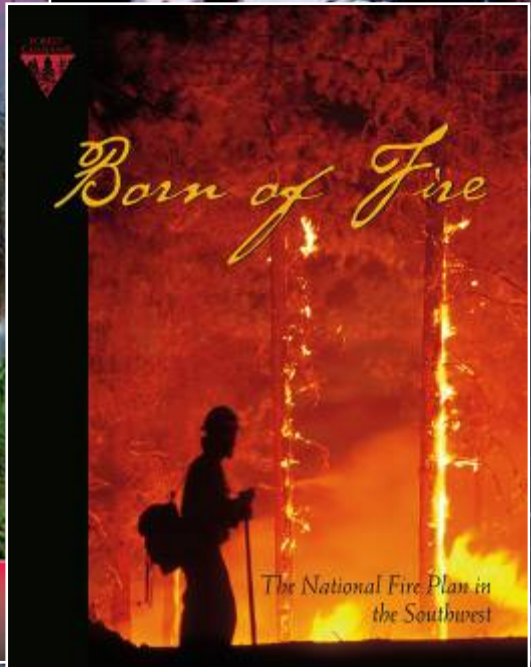
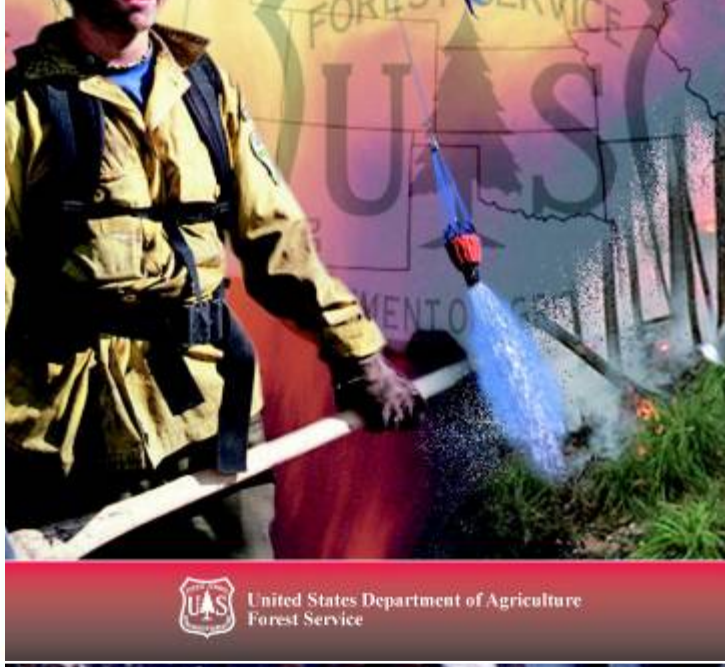
Treated







National Fire Plan - 2001





Hunger-Henry
Prescribed Fire

Gunderson Prescribed Fire



Eastshore Prescribed Burn Treatments





Eastshore Prescribed Burn Treatments



Dry-Site Restoration



Before Treatment



After Treatment

Thin-From-Below Treatment



Before Treatment



After Treatment

Log Forwarder



Product Removal



Helicopter



Single Grip Harvester



Project Objectives

- Reduce Risk of Fires to Life & Property
- Treat Stands with Insect and Disease Mortality and/or, at High Risk of Crown Fire, to Protect Large PP & L Trees
- Re-introduce Fire to Dry-Site Ecosystems
- Support Public Education & Group Cooperation
- Contribute to Local Economy
- Re-connect with neighbors across the fence

Proposed Treatments

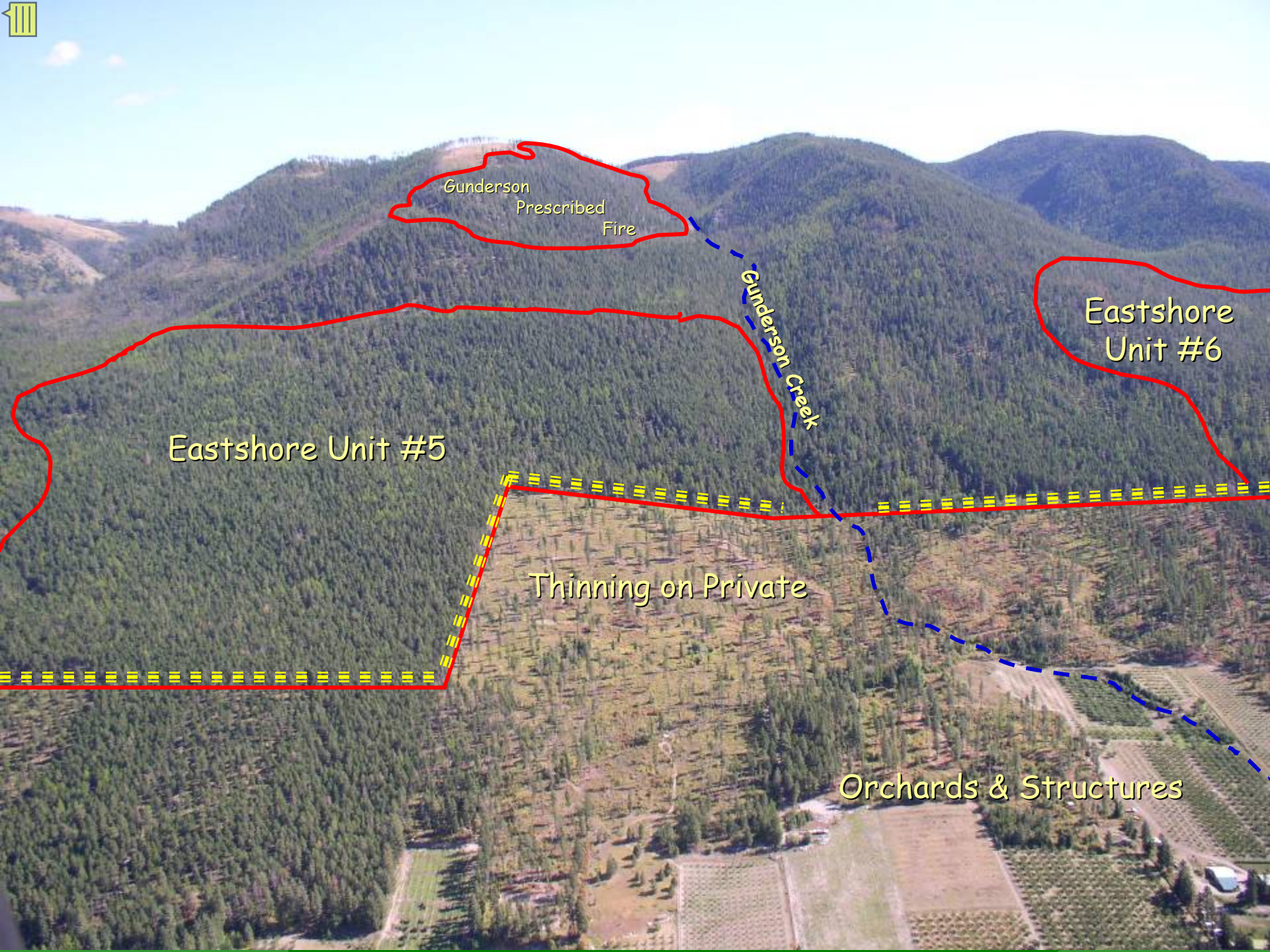
Crane Creek

Hwy 35

USFS

Beardance





Gunderson
Prescribed
Fire

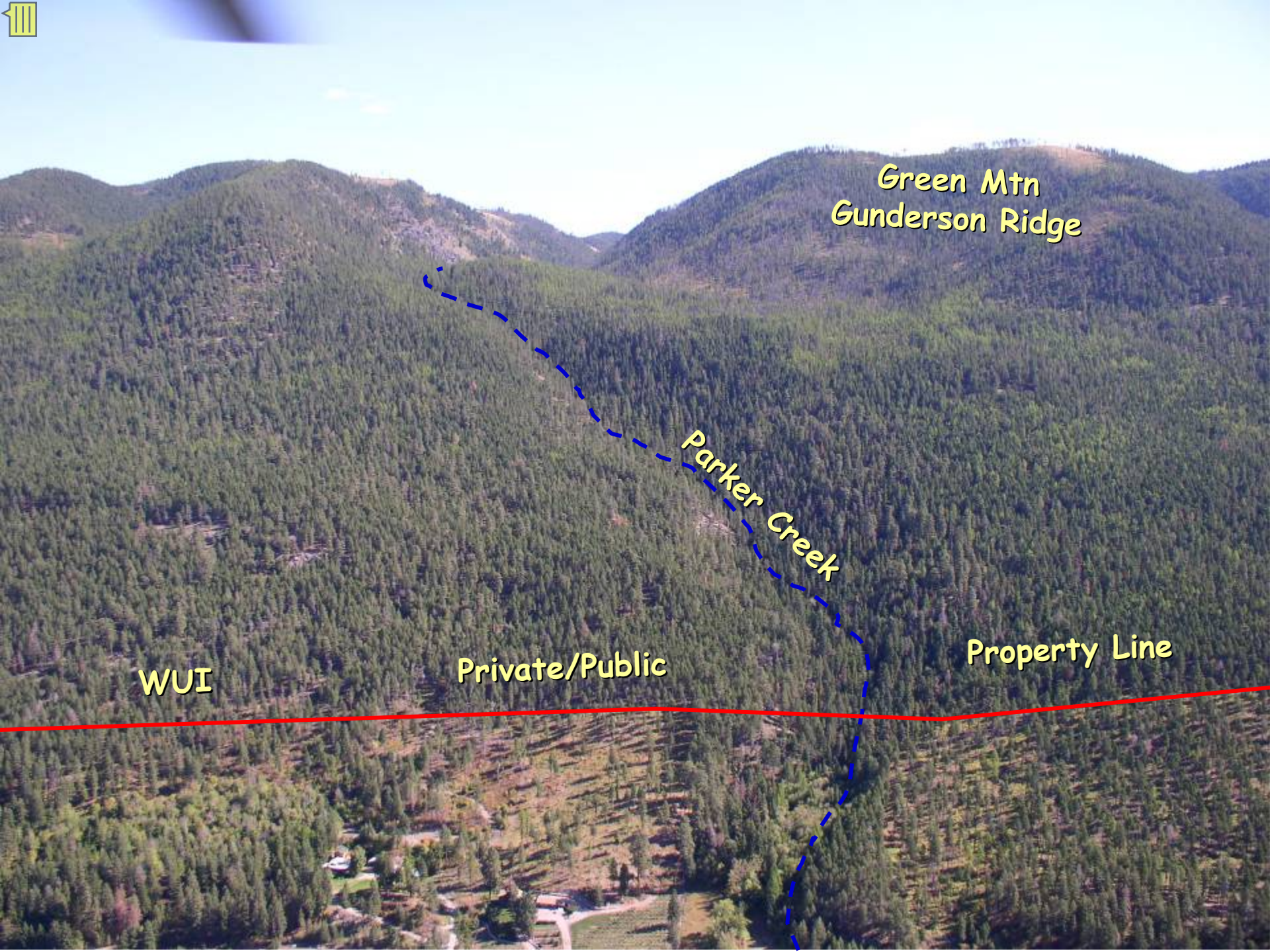
Gunderson Creek

Eastshore
Unit #6

Eastshore Unit #5

Thinning on Private

Orchards & Structures



Green Mtn
Gunderson Ridge

Parker Creek

WUI

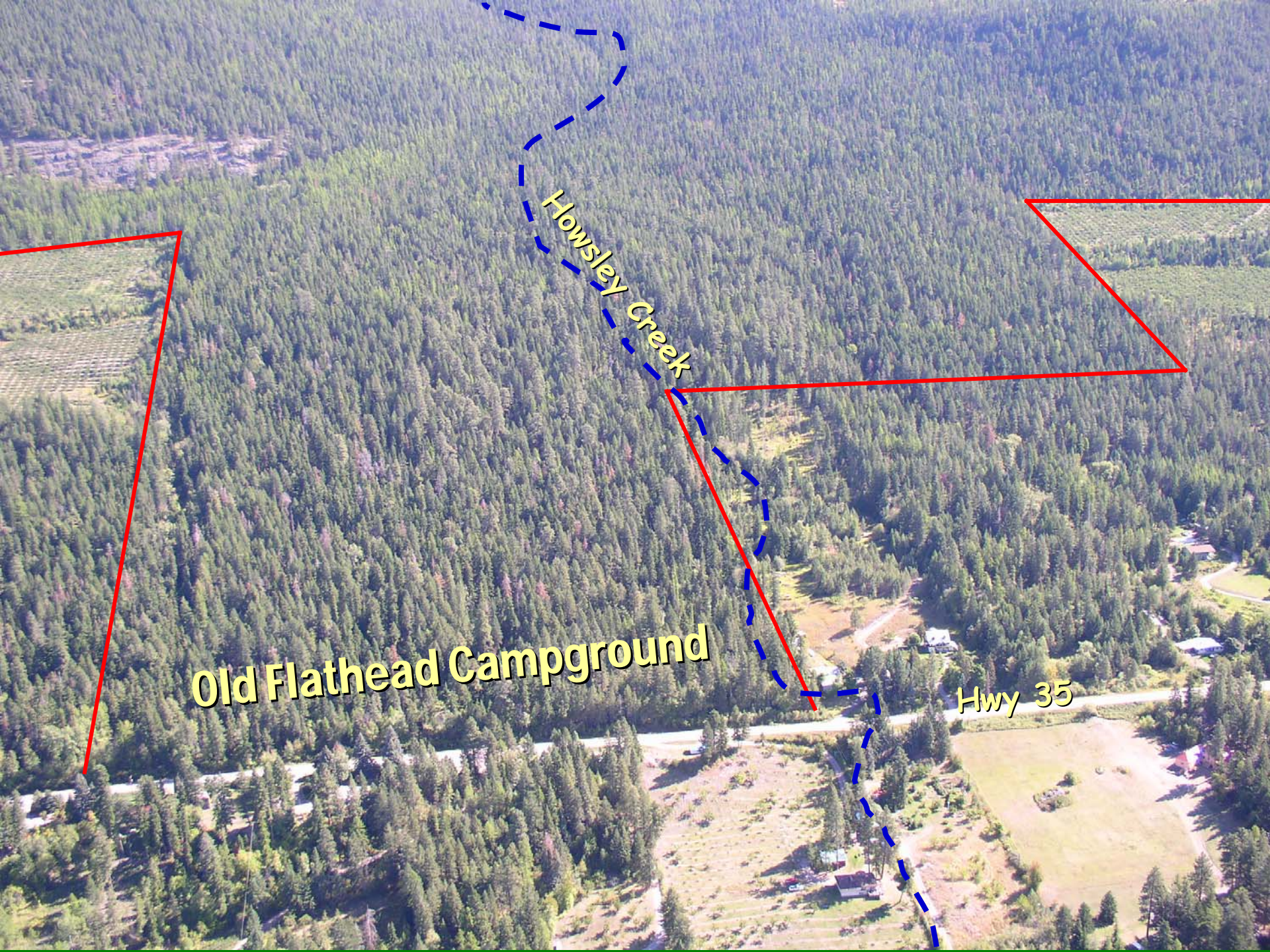
Private/Public

Property Line

Howsley Creek

Old Flathead Campground

Hwy 35



FIRE-WISE

Associated with the
East Shore (of Flathead Lake)
Fuels Reduction Proposal
Swan Lake Ranger District
Flathead National Forest



***A LANDOWNERS' GUIDE FOR
FIRE PREPAREDNESS ON
BOTH SIDES OF THE FENCE***

**Lake & Flathead County
Commissioners**

**The University of Montana
Biological Station**

**Confederated Salish & Kootenai
Tribe**

**Montana Department of Fish,
Wildlife, and Parks**

**Department of Natural Resources
and Conservation**

***Bigfork & Finley Point Volunteer
Fire Department***

***Flathead Forestry Project
Bigfork Chamber of Commerce***

Flathead Lakers

Project Generates 1200 acres of Adjacent Fuel Treatment







Homeowner Group Meeting



Media Field Trip

Collaborative Group Field Trip





U of M Graduate Student Field Trip



U of M Graduate Student Field Trip



Adjacent Land Owner Field Trip



Bigfork School Field Trip





Montana Fuel Reduction Working Group Field Trip

Eastshore Unit 6, 2007

Adjacent Landowner Supports Project



- 
- The 3 *minimum requirements* for a CWPP as described in the HFRA are:

- **Collaboration**: A CWPP must be collaboratively developed by local and state government representatives, in consultation with federal agencies and other interested parties.
- **Prioritized Fuel Reduction**: A CWPP must identify and prioritize areas for hazardous fuel reduction treatments and recommend the types and methods of treatment that will protect one or more at-risk communities and essential infrastructure.
- **Treatment of Structural Ignitability**: A CWPP must recommend measures that homeowners and communities can take to reduce the ignitability of structures throughout the area addressed by the plan.



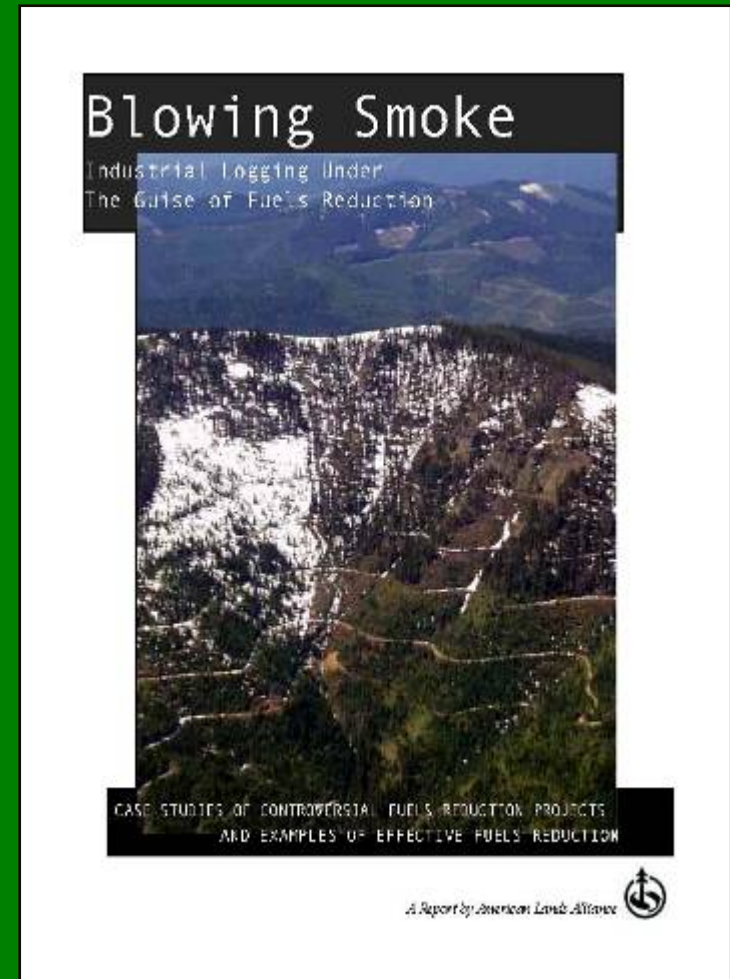
1. Convene Decision Makers
2. Involve Federal Agencies
- 3. Engage Interested Parties**
4. Establish a Community Base Map
5. Develop a Community Risk Assessment
6. Establish Community Priorities and Recommendations
7. Develop an Action Plan and Assessment Strategy
8. Finalize Community Wildfire Protection Plan

Collaboration: Why Spend the Time?

Collaboration will happen, with or without you.

HEADLINES:

In an August 28 letter to select Hyde Park residents, the Fire Department announced plans to thin trees on approximately 100 acres in three areas of city-owned open space. The thousands of hikers using the Dale Ball trails running through the project areas and the general public were not informed. The tree clearing plan is still draft and not widely available. A September 22 letter from the Fire Department's said, **“we did rush forward and not involve the public as we should have. In our zeal to protect the City from wildland fire, we neglected to involve you.”**



Have a Plan

Say what you are going to do, and then do what you said you would do

Qualities of Good Objectives. Group objectives must be made up of certain attributes or they will not convey the necessary guidance. Good objectives must be informative and SMART. Objectives that are **SMART** are:

- **S** - Specific - what will be accomplished, using limiting factors, and identifying the range of acceptable change from the present to the proposed condition.
- **M** - Measurable - the present and proposed condition must be quantifiable and measurable.
- **A** - Achievable - can be achieved within a designated time period.
- **R** - Related/Relevant - related in all instances to the land use plan goals and relevant to current fire management practices.
- **T** - Trackable - objectives must be trackable over time and must include a definite timeframe for achievement, monitoring, and evaluation.

Project Decision Authority

The Healthy Forests Initiative and Healthy Forests Restoration Act

- The Healthy Forests Initiative (HFI), introduced by President Bush on August 22, 2002, was designed to improve regulatory processes within federal agencies.
- Covered activities include such things as prescribed burning and mechanical treatments to reduce forest fuels (FS CE #10).

