

Community Wildfire Protection Plan
Collaboration Workshop
IAFC 2008 WUI Conference



LOGAN SIMPSON
DESIGN INC.



LOGAN SIMPSON
DESIGN INC.

Community Wildfire Protection Plan Collaboration Workshop

Priority setting must reference the overall goals and objectives of the CWPP

- Strategic goals generally focus on public/firefighter safety and community protection from wildfire
- Community benefits from adopting a CWPP must align strategic thinking with prescriptive actions to meet expectations of the governments and constituents



LOGAN SIMPSON
DESIGN INC.

Community Wildfire Protection Plan Collaboration Workshop

Initiating the collaborative process

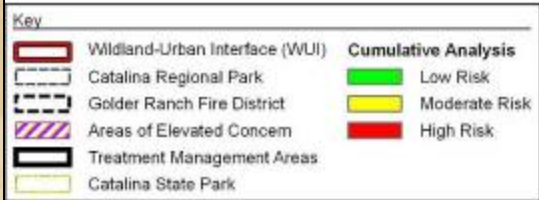
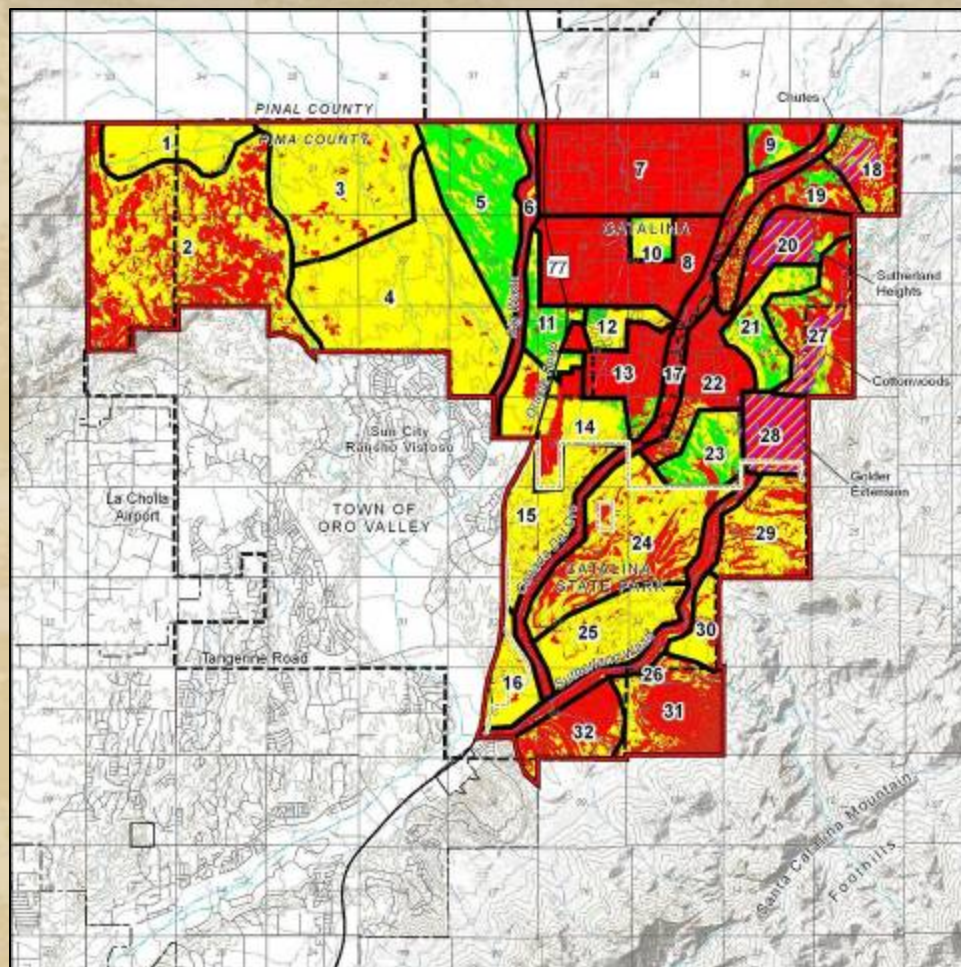
Essential to determine who represents the community, its values and expectations from the CWPP process

- Informal community leadership, especially in limited capacity communities
- Formal leadership in municipalities
- Region wide organization and special interest group representation
- Capture local history, knowledge and support
- Provide all residents with the opportunity to participate in planning
- All residents have opportunity for wildfire mitigation measures



LOGAN SIMPSON
DESIGN INC.

Community Wildfire Protection Plan Collaboration Workshop



Cumulative Risk Assessment Community of Catalina, AZ

Areas of risk are reduced to -
Reasonable size
Consistent risk factor
Consistent mitigation
measures



LOGAN SIMPSON
DESIGN INC.

Community Wildfire Protection Plan Collaboration Workshop

Community expectations from the CWPP process

- Vegetative fuel manipulations (why haven't we done something by now, NIMBY syndrome)
- Prepared, trained and equipped wildland firefighters and response
- An informed and motivated public (when my neighbor treats his property, I'll treat mine)
- Restored forest and rangeland environments
- Money (grant money will pour in)



LOGAN SIMPSON
DESIGN INC.

Community Wildfire Protection Plan Collaboration Workshop

Priority action recommendations for wildland fuel mitigation in Catalina, AZ

Management area	Location and description	Project partners	Estimated treatment costs ^a
C27	Firebreaks in section 14—Lands including the cottonwoods and area north of Golder Extension	GRFD, ASLD, CNF, and Pima County	740 acres of oak/mesquite woodland, 3 acres treated per 12-hour day = \$220,211.00
C28	Firebreaks in sections 23 and 22—Lands south of Rollins Rd. including Golder Extension	GRFD, ASLD, CNF, and Pima County	412 acres of oak/mesquite woodland, 3 acres treated per 12-hour day = \$122,604.00
C20	Firebreak in section 11—Land surrounding Sutherland Heights	GRFD, ASLD, CNF, and Pima County	422 acres of oak/mesquite woodland, 3 acres treated per 12-hour day = \$125,580.00
C17	Riparian treatments in Cañada del Oro within the WUI	GRFD, ASLD, and Pima County	831 acres of mesquite bosque, 2 acres treated per 10-hour day = \$328,388.00
C22	Firebreaks in section 21—southeast of the community bounded by Cañada del Oro to the west and the cottonwoods to the east	GRFD, ASLD, and Pima County	533 acres of oak/mesquite woodland, 3 acres treated per 10-hour day = \$140,845.00
C18	Firebreak in sections 1, 12, and 11—Area of the Chutes in the far northeast portion of the WUI	ASLD, CNF, GRFD, and Pima County	415 acres of oak/mesquite woodland, 3 acres treated per 12-hour day = \$123,497.00
Firebreak maintenance	One- to two-year rotating maintenance of fine and light fuels in Firebreaks C27, C28, C20, C17, C22, and C18	ASLD, CNF, GRFD, and Pima County	500 acres per year of light understory fuel treatments in excess of 4 acres treated per 10-hour day = \$99,093.00

^aTotal acres to be treated during the life of the plan



LOGAN SIMPSON
DESIGN INC.

Community Wildfire Protection Plan Collaboration Workshop

Agency expectations from the CWPP process

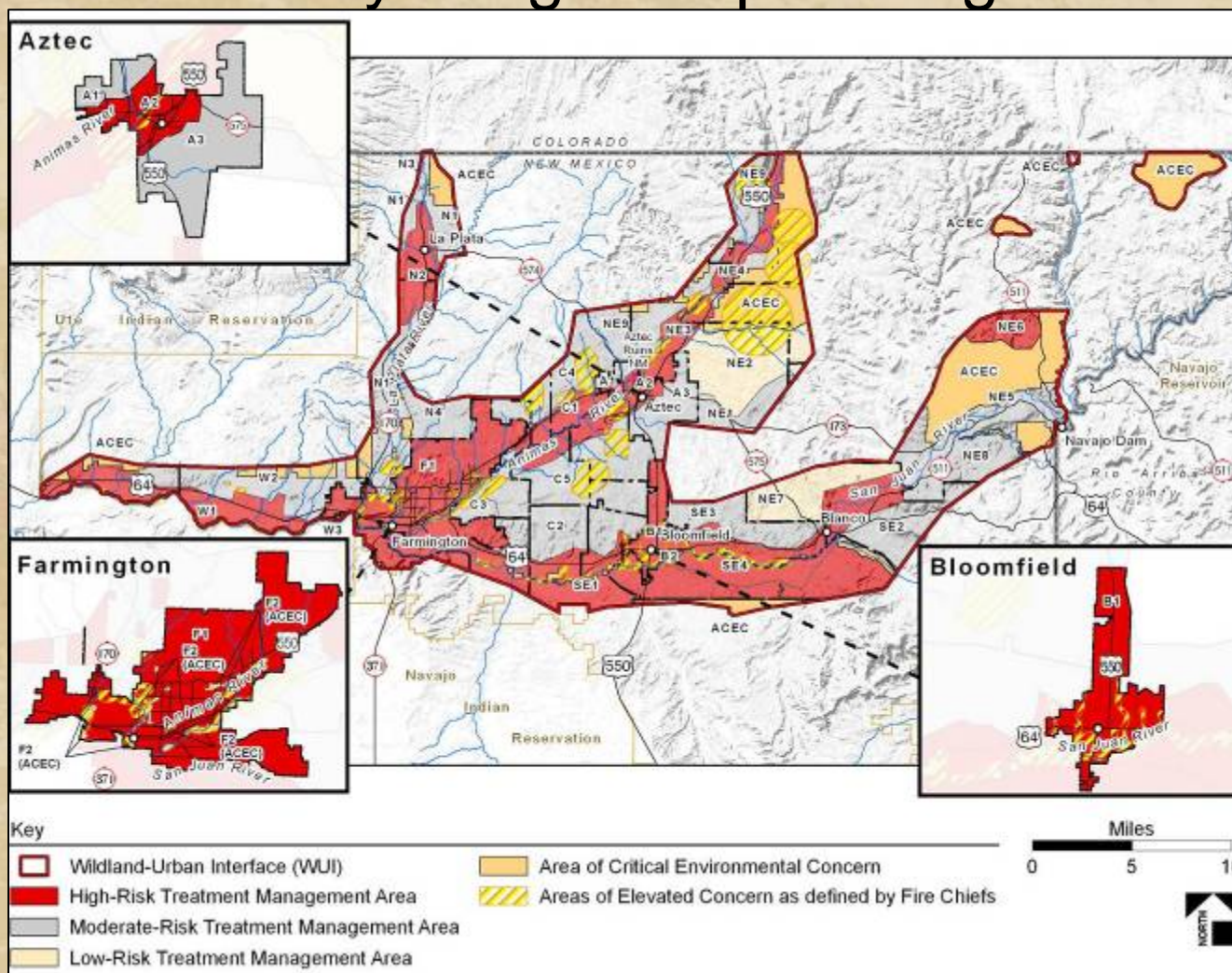
- Fire Departments want cost effective response, funds for improving skills, training and equipment
- County Offices of Emergency Management will have a complete All Hazards Assessment with recommendations for mitigation
- Federal agencies will have priority areas determined for them with full advantage of expedited NEPA
- All want money – grants and priority agency funding just keep coming



LOGAN SIMPSON
DESIGN INC.

Community Wildfire Protection Plan Collaboration Workshop

Multiple community mitigation planning





LOGAN SIMPSON
DESIGN INC.

Community Wildfire Protection Plan Collaboration Workshop

Community priorities for reducing structural ignitibility

Partner	Project	Equipment/Expenses	Timeline
Farmington, Bloomfield, Aztec, San Juan County, and BLM	Recruit, train, and retain 100 new firefighters throughout San Juan Basin	Recruitment outreach and marketing through theaters, advertisements, newspapers, brochures: \$1,200 for 3 years Basic academy training and support to the County Fire Department training coordinator: \$5,000 for 3 years	Begin recruitment in 2006, complete by 2009, and then maintain
	Firefighter training for structural and wildland fire	Joint annual multiagency training program: \$1,200 annually Three academies conducted annually for basic wildland firefighter, hazmat, EMS: \$3,600 annually Instructor certification for training program: \$2,400 annually Common preseason readiness training activity among municipal, county, state, and federal wildland fire responding authorities: \$2,500 annually	Begin academies and instructor training in 2007 and maintain annually; conduct common readiness training in spring 2007
	Construct a series of 5,000-gallon (minimum) water storage facilities strategically located throughout the WUI	Install one water storage facility: \$5,000 annually	Begin construction in 2007/08
	Farmington FD to obtain a 2,000-gallon water tender/tanker for engine support in and adjacent to Farmington	2,000-gallon water tender: one-time \$150,000 expense	Obtain in calendar year 2007
	Expand role of the wildfire team	Establish a grant-supported wildland fuels crew of firefighters that will treat elevated risk areas throughout the WUI	Begin grant and implementation planning in 2007; acquire personnel and equipment by fall 2007 and maintain annually
	Firefighter incentive program	Additional individual training opportunities: \$1,200 annually Individual attendance at national-level wildland fire conferences: \$1,200 annually	Initiate the awards/recognition program in spring 2007

Partner	Project	Equipment/Expenses	Timeline
Farmington, Bloomfield, Aztec, San Juan County, and BLM	Initiate a public involvement program in all SJBWPP communities to develop an integrated, consistent land use code	Public involvement program materials and meeting facilitation: \$20,000 Technical assistance code and ordinance development: \$45,000	Begin 2007; complete 2009
	Develop and implement a comprehensive emergency response plan; appropriate communications, coordination, and infrastructure development; and appropriate mutual aid agreements for all San Juan County communities	Risk assessment by specific community areas: \$45,000 Technical assistance: \$20,000	Begin 2007; complete 2012
	Approve, obtain, and provide training in consistent wildland fire management model	Obtain fire management model, ensure compatible software and hardware among fire districts, and train personnel: \$2,000	Acquire and provide training in 2007; provide annual training as necessary
	Educate citizens on the role of county-level organization for dealing with catastrophic wildfire including communication and emergency services	Develop and distribute informational material including communications and other emergency services: \$10,000	Develop and print 1,000 brochures and initiate distribution in 2007; provide information annually to fire departments within the WUI



LOGAN SIMPSON
DESIGN INC.

Community Wildfire Protection Plan Collaboration Workshop

Considerations of priority setting

In multiple community CWPPs, do relations exist for prioritizing within communities, among communities and across mitigation features?

Varying levels of wildfire risk

Community values (forest products or high capacity community)

Realistic expectations

- What can we accomplish by ourselves?
- What do we need financial support to initiate?

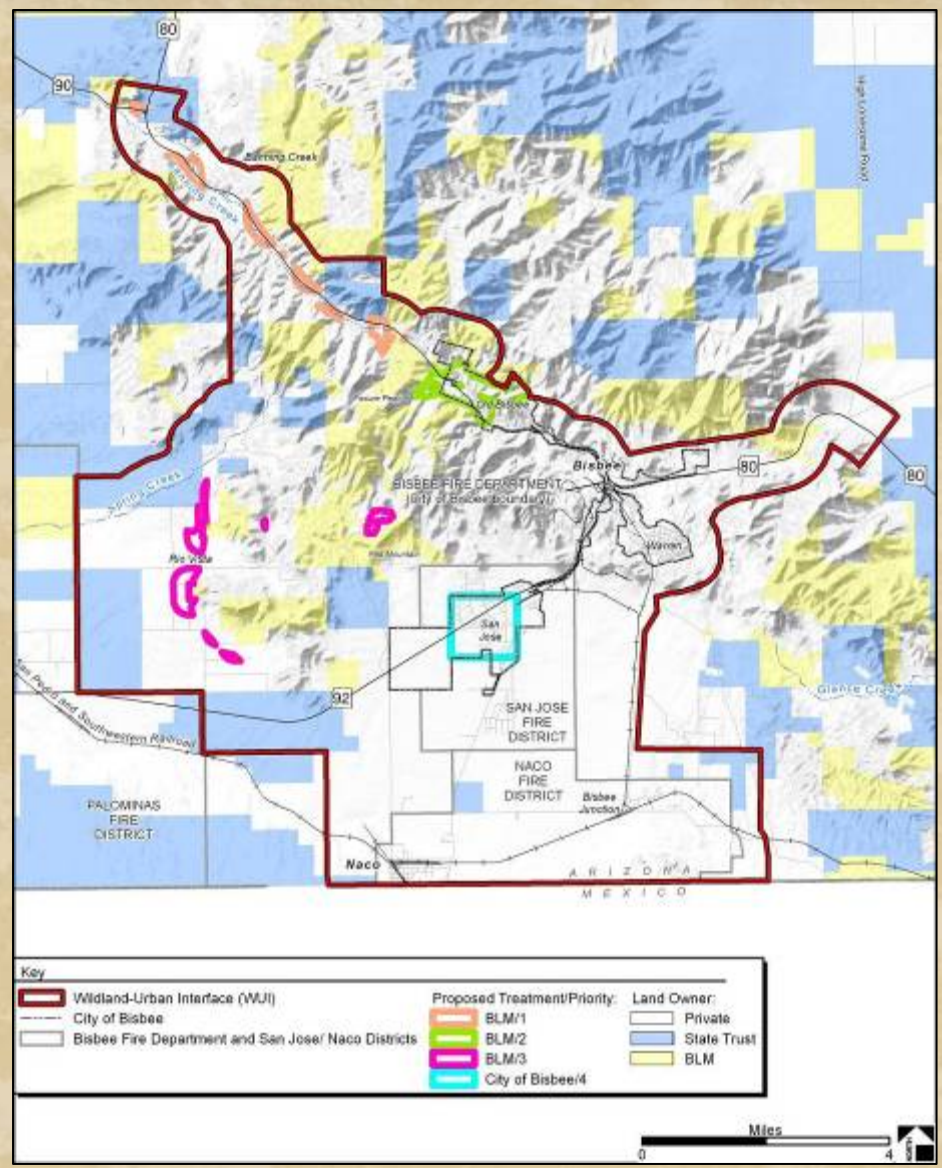
Realize what we can actually do in a single year or grant cycle (if we ask for 10 million maybe we'll get one million)

Community Wildfire Protection Plan Collaboration Workshop



LOGAN SIMPSON
DESIGN INC.

Priority firebreak areas for Town of Bisbee, AZ





LOGAN SIMPSON
DESIGN INC.

Community Wildfire Protection Plan Collaboration Workshop

Contact Information

Richard Remington

Logan Simpson Design Inc.

33 N. Stone Ave, Suite 1460

Tucson, AZ 85701

(520) 884-5500 – office

(520) 403-4775 - mobile

rremington@lsdaz.com