



## **NETL Overview**

---

Larry Sullivan, Small Business Program Manager

October 14, 2011

# National Energy Technology Laboratory

## *MISSION*

*Advancing energy options  
to fuel our economy,  
strengthen our security, and  
improve our environment*



**Oregon**



**Pennsylvania**



**West Virginia**

# NETL Full-Spectrum Capacity for Innovation

1

*DOE national laboratory dedicated to energy RD&D*

- Economy-wide perspective on energy challenges
- 100 years of energy technology RD&D experience

2

*Only government owned & operated DOE national laboratory*

- Unbiased approach reflecting national priorities
- Direct taxpayer accountability for funding

3

*Combination of research expertise and contracting capabilities*

- Expertise & equipment to perform & evaluate RD&D
- Collaboration, contracting, counsel, communication

4

*Established relationships within academia, industry & governments*

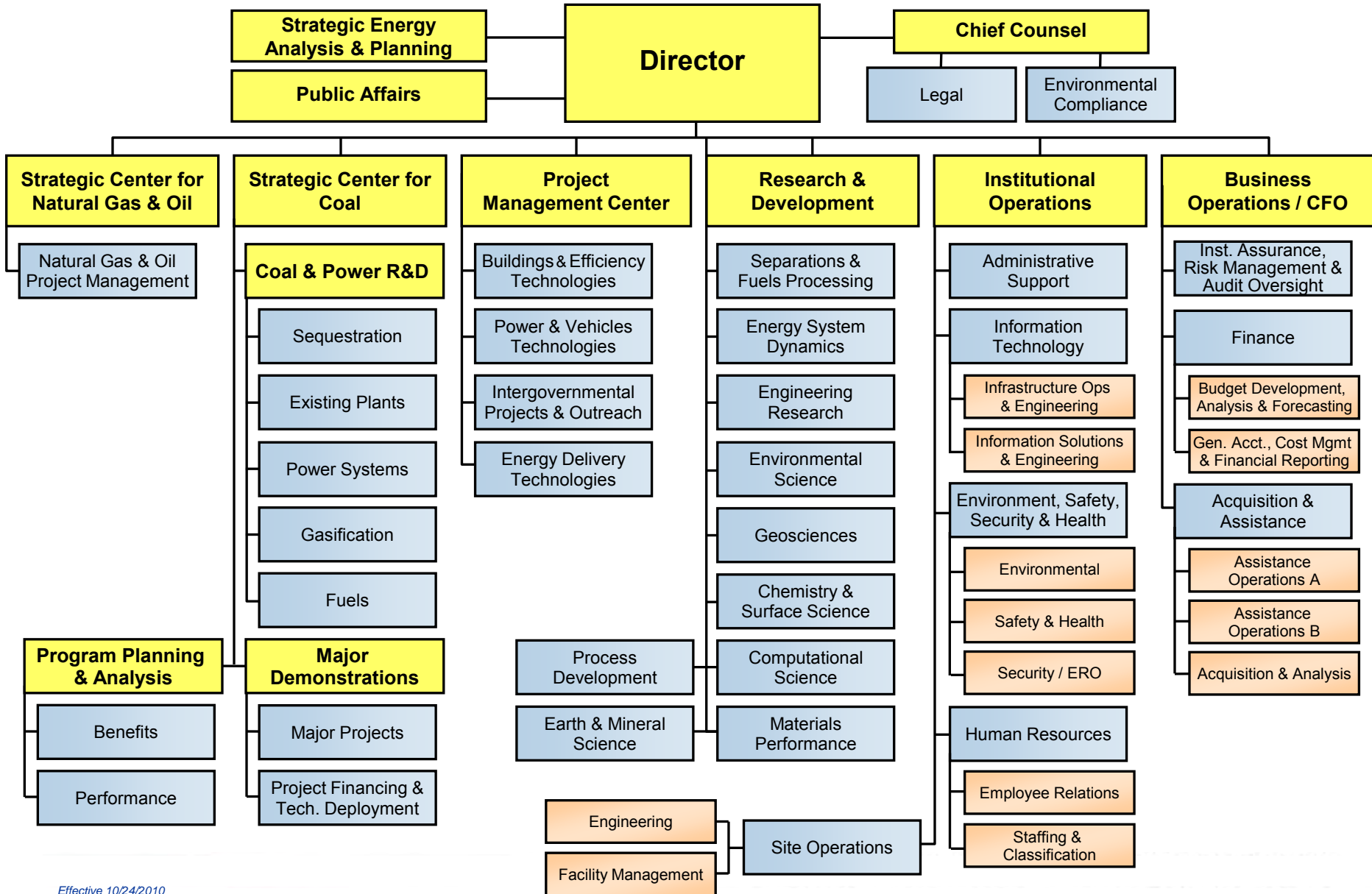
- Broad vision of the energy technology landscape
- Roundhouse for intellectual capital & tech transfer

5

*Market-facing basic & applied science*

- Explicit targets to deliver technology innovations
- Public / private cost sharing

# National Energy Technology Laboratory



# NETL Program Areas

## Strategic Center for Coal



## Strategic Center for Natural Gas and Oil



## Project Management Center



# Outcomes from NETL's Programs

## *Technology*

- Assist in providing U.S. with clean, secure, and abundant energy and accelerating novel technologies to the marketplace

## *Policy*

- Positively impact development of sound energy policies

## *Competitiveness*

- Help maintain technology competitiveness of U.S. energy industry

## *Stability*

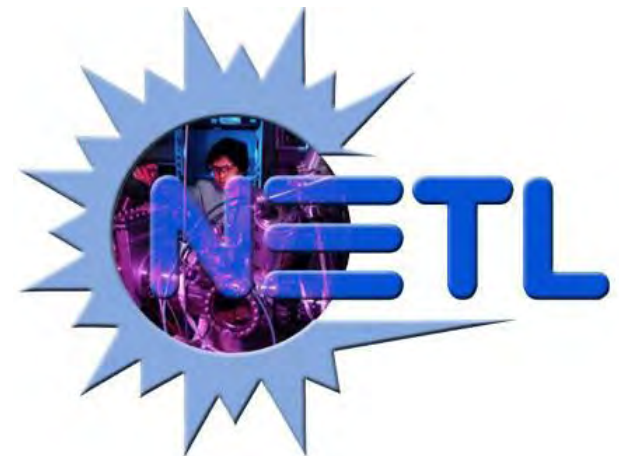
- Appropriately transfer technology to developing countries to improve geopolitical stability / global climate

## *Workforce*

- Provide trained energy workforce through university research programs

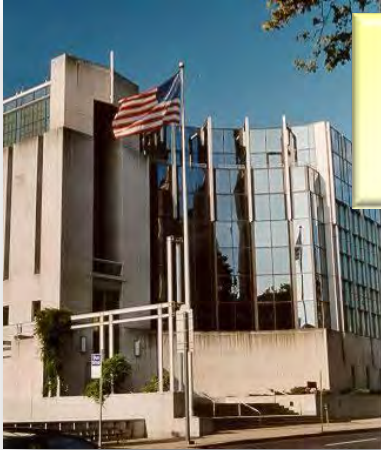
## *Region*

- Contribute to regional economic development



# Regional University Alliance

## *NETL's Institute for Advanced Energy Studies*



**Carnegie  
Mellon  
University**



**West Virginia  
University**

**Virginia  
Polytechnic  
Institute**



**Pennsylvania  
State  
University**



**University of  
Pittsburgh**



*Leveraging National Lab and University-Based Scientific and Engineering Assets to Address Significant National Energy Issues*

# NETL SOCIO-ECONOMIC RESULTS

## FY 2010

- **FY 2010 Acquisition Base** **\$363,883,289**
- Small Disadvantaged Business 51,733,933
- 8(a) Business 54,621,171
- Women Owned Business Awards 24,285,029
- HubZone Business Awards 11,818,754
- Veteran Owned Business Awards 1,643,846
- Service Disabled Veterans Business 517,467
- **Small Business Total** **\$144,620,200**  
**39.80%** of acquisition procurement base



# Doing Business with NETL

- **Acquisition**

Micro Purchases (under \$3,000) Purchase card

Simplified Acquisition \$ 3,000 to \$15,000 Oral Quotes

\$15,000 to \$25,000 FedConnect

\$25,000 to \$150,000

Contracts (over \$150,000 except for commercial items)

Simplified Acquisitions > \$25,000 & Contracts FedConnect and FedBiz Opps

# FedConnect



**FedConnect is an online marketplace where DOE and other federal agencies post opportunities and make awards via the web. Any vendor can view public postings.**

**[www.fedconnect.net](http://www.fedconnect.net)**

# Doing Business with NETL

## OTHER OPPORTUNITIES

- **Subcontracting with Prime Contractors**
- **Contracts exceeding \$650,000 where subcontracting opportunities exist must have a subcontracting plan**

# Site-Support Contractors Assist Lab Operations

## The Majors

### Booz Allen Hamilton, Inc.

Large Business  
*Energy Sector Planning and  
Analysis Services (ESPA)*

Booz | Allen | Hamilton

### Platinum Solutions, Inc.

*Information Technology and  
Engineering (ITES) Services*



### Performance Results Corp.

Small disadvantaged woman-owned  
8(a) business  
*Support Administrative Services (SAS)*



### Leonardo Technologies, Inc.

Small Business  
*Program and Performance  
Management Services (PPM)*



### KeyLogic Systems, Inc.

Small Business  
*Project Execution and Integration  
Services (PEI)*



### Eagle Facility Mgmt. Services

Alaska Native small disadvantaged  
8(a) business  
*Site Operations Services (SOS)*



### URS Corporation (URS Washington Division)

Large Business  
*Research and Engineering Services (RES)*



*Access to > 200 Companies, Consultants & Universities Through Subcontracts*

# Visit Our Websites

*Office of Fossil Energy*  
[www.fe.doe.gov](http://www.fe.doe.gov)

*NETL*  
[www.netl.doe.gov](http://www.netl.doe.gov)

# Doing Business with NETL

## DOE's Forecast of Opportunities

- **DOE's Office of Small and Disadvantaged Business Utilization has a web site that provides efficient and effective access to DOE's forecasted requirements over \$100,000 for the next four fiscal years.**

**<http://hqInc.doe.gov/support/SmallBusUtil.nsf>**

# National Energy Technology Laboratory Acquisition Forecast

<b>Type of Acquisition:</b>	<b>Security Services</b>
<b>NAICS:</b>	<b>561612</b>
<b>Acquisition Description:</b>	<b>Security Services for the NETL Sites</b>
<b>Type of Action:</b>	<b>8(a) Competition</b>
<b>Estimated Dollar Range:</b>	<b>\$9.0M - \$11.0M</b>
<b>Anticipated Award Fiscal Year:</b>	<b>2013</b>
<b>Contact Info:</b>	<b>Point of Contact will be listed in the Request for Proposal</b>

# Contracting Opportunities

The National Energy Technology Laboratory (NETL) is DOE's central focal point for all unsolicited proposals.

- An unsolicited proposal is an application for support of an idea, method, or approach, which is submitted by an individual, business, or organization solely on the proposer's initiative, rather than in response to a NETL solicitation.
- NETL considers proposals in all areas of energy and energy-related research and development with emphasis on long-term, high-risk, high-payoff technologies.
- NETL may accept an unsolicited proposal if it:
  - Demonstrates a unique and innovative concept or a unique capability of the submitter;
  - Offers a concept or service not otherwise available to the Federal government; or
  - Does not resemble the substance of a pending competitive solicitation.
- Web site: <http://www.netl.doe.gov/business/usp/unsol.html>



# NETL Small Business Contacts

**Larry Sullivan**  
**Small Business Program**  
**Manager**  
**(412) 386-6115**  
**FAX (412) 386-6137**  
**[sullivan@netl.doe.gov](mailto:sullivan@netl.doe.gov)**

**Andrew Aurelio**  
**SBIR Coordinator**  
**(304) 285-0244**  
**Fax (304) 285-4216**  
**isaac.aurelio@netl.doe.gov**

**Robert Mohn**  
**Contract Specialist**  
**Simplified Acquisitions**  
**(412) 386-4963**  
**Fax (412) 386-5770**  
**mohn@netl.doe.gov**

**John Augustine**  
**Unsolicited Proposals**  
**Coordinator**  
**(412) 386-4524**  
**Fax(412) 386-6137**  
**john.augustine@netl.doe.gov**