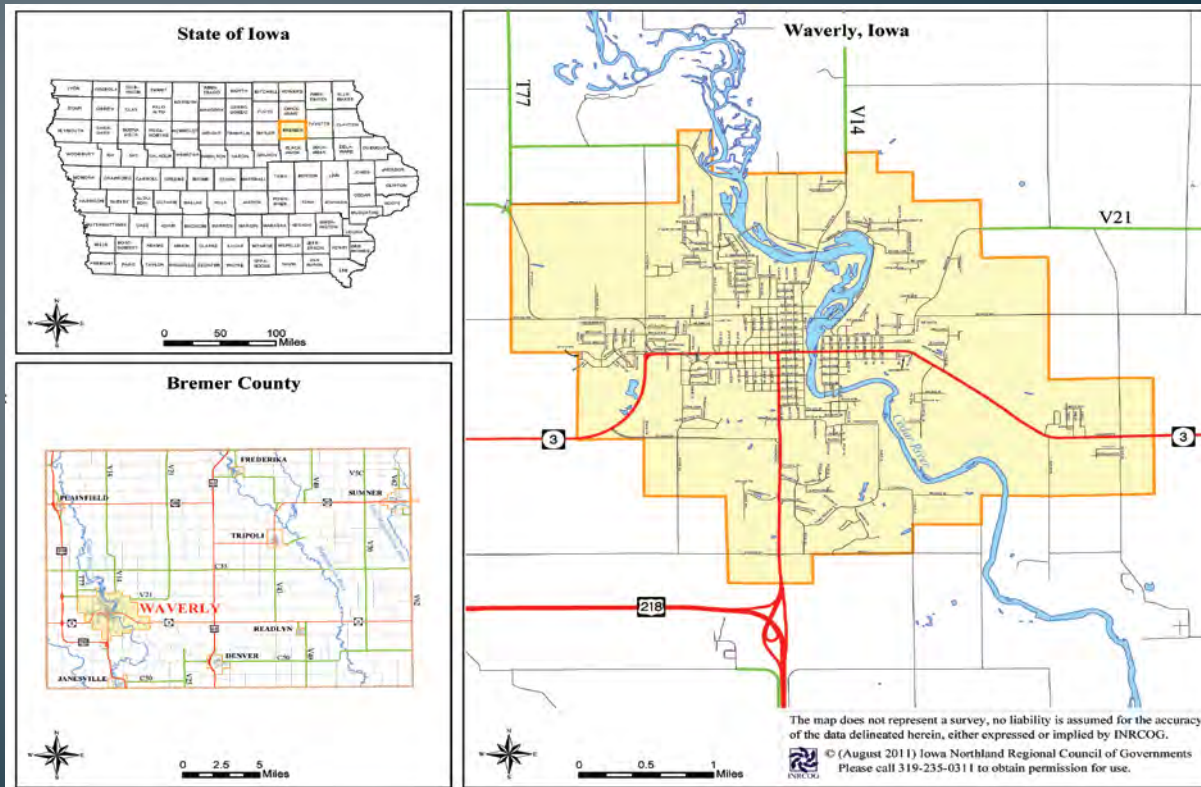


Appalachian Regional Development Workshop

December 5, 2011

An Overview of Waverly, Iowa

- Location of the Community:



An Overview of Waverly, Iowa

- Population (2010): 9,874 (up 10% from 2000)
- Flood of 2008 (June 10th) (and 1999 and 1993)
 - Water level was 8 feet above flood stage
- Cedar River divides the community
- Impact of Dry Run Creek
- Topography
- 15% of homes impacted
- Central Business District dramatically impacted
- 3 schools damaged







06.10.2008









Recovery from the 2008 Flood

- Began immediately
 - Emergency planning began very shortly thereafter
 - Reverse 911 investments made by local governments
- Continues today...

Plans, Projects, and Programs

- Emergency Support Function (ESF) 14 (FEMA)
- Hazard Mitigation Plan (FEMA/IHSEMD)
 - Planning Committee is now a City Commission
- Property Acquisitions (residential, commercial, industrial)
 - Hazard Mitigation Grant Program (FEMA/IHSEMD)
 - Community Development Block Grant (HUD/IEDA)
- Business Assistance (HUD/IEDA)
- Inflatable Dam
 - Economic Development Administration (DOC)
 - Community Development Block Grant (HUD/IEDA)
- Hazard Mitigation Grant Program (school safe rooms)

Plans, Projects, and Programs

- Cedar River Coalition
- Housing Forum
- Watershed Management Authority

Plans, Projects, and Programs

- Environmental Protection Agency (EPA)-Smart Growth Initiative
 - Workshops (May 2010)
 - Partners-Public and Private
 - Smart Growth Principles
 - Focused Four Projects or Areas:
 - Comprehensive Plan and Regulations
 - Green Infrastructure
 - Housing and Infill Policy
 - Smart Planning Projects
- Open Space Master Plan

Plans, Projects, and Programs

- Iowa Smart Planning Legislation (April 2010)
 - 10 Principles of Smart Planning (and 13 Plan Elements)
 - Collaboration
 - Efficiency, transparency, consistency
 - Clean, renewable, and efficient energy
 - Occupational diversity
 - Revitalization
 - Housing diversity
 - Community character
 - Natural resources and agricultural production
 - Sustainable design
 - Transportation diversity

Plans, Projects, and Programs

- Waverly Comprehensive Plan Update (recently adopted)
 - Our challenge: Meld or mesh documents, public input, and new Iowa law into one “smart plan”
 - Significant opportunity for public input-guided by Public Involvement Plan
 - Task Force
 - Newspaper
 - Community survey-Survey Monkey
 - Civic organizations
 - Other local governments
 - Planning and Zoning Commission
 - Commissions and Boards
 - Elected Officials

Plans, Projects, and Programs

- What's next?
 - Ordinance Updates: Zoning; subdivision ordinance (smart codes)
 - Policies: Complete streets; design guidelines; best management practices; stormwater management
 - Focuses: Housing task force; downtown master plan; open space; economic development

Resources

- Federal:
 - Federal Emergency Management Agency (\$)
 - Environmental Protection Agency
 - Economic Development Administration (\$ and Staffing Assistance)
 - Housing Urban Development/CDBG (\$)
 - US Department of Agriculture/Rural Development (\$)
 - Small Business Administration (\$)
 - Natural Resources Conservation Service
 - US Army Corp of Engineers

Resources

- State of Iowa:
 - Iowa Homeland Security and Emergency Management Division (\$)
 - Iowa Economic Development Authority (\$)
 - Iowa Department of Natural Resource (\$)
 - Iowa Department of Transportation (\$)
 - Iowa Division of Agriculture and Land Stewardship
 - Institutions (Universities and Colleges)
 - Rebuild Iowa Office

Resources

- Local Government
 - Cities and Counties (\$)
 - Councils of Government/Regional Planning Agencies/Development Organizations
- Other Entities
 - Business Community (chambers, EDC's, etc.)
 - Non-governmental entities (non-profits)
 - Human Services agencies and organizations
 - Faith-base entities and organizations
 - Private entities and firms (architects, engineers, landscape architects)
 - Regional Development Organizations (IARC, NADO, NARC, etc.)

Matching Funds

- Federal to State and/or Local is generally allowed
 - Check with your state
- There is no, untethered, single, federal agency or funding source exclusively for disaster recovery.

Positives

- Funding (availability)...once the logjam released, but it was a bit like being in a library without a card catalog or computer index
- Built volunteerism
- Planning (if you wish) will take center stage
- Preparation (personal, business, continuity plans-government)
- Mitigation (Impact) Focused Rebuilding
- Regulatory relief (i.e. Davis-Bacon for HMGP funds)

Challenges (Negatives)

- No single federal agency tasked with recovery
 - Some funds do not work well for disaster recovery (i.e. CDBG)
 - Rules governing funds can be complex
- Restrictions feel like they are ever-changing
- Not a timely process
- The “rush” to re-establish “normal” in the community
- Can be piecemeal or incremental (planning is important)
- “Government” environment (trust, mistrust, and distrust)
- Volunteer management and preventing volunteer burn-out
- We failed, too, at times...

Suggestions (Lessons Learned)

- Build your coalitions
- Ask for help (you cannot do it all yourself)
- Think regionally (disasters do not follow political boundaries)
- Plan broadly/Implement incrementally
- Be patient
- Inform your elected officials (all levels of political spectrum)
- Disaster information repository and dissemination
- Best practices need to be cataloged
- Funding flexibility allowances during disasters
- Remember...if you do not do this, who will?

Questions?

- Contact Information:
 - Brian Schoon, AICP
 - 229 East Park Avenue
 - Waterloo, Iowa 50703
 - (319) 235-0311
 - bschoon@inrcog.org