

NETWORK NOISE

Volume 4, Issue 3

Terry Christie, Editor

August 1999

MONITOR MUSINGS

Ken Baker, DOE/HQ

CAS CONDITION

The only update since the M&O User minutes is optimism! It appears that FI management and the Deputy Secretary of Energy along with the proper administrative personnel are trying to transfer the functions of Real Estate, Maintenance Management and Utilities to another Headquarters program or administrative office. This transfer would include the CAS and FIMS databases and yours truly. Reduction in Force notices was distributed on July 28. But, I am optimistic that the functions will continue somewhere in Headquarters. Where???

In the meantime, we are still going to continue development of CAIS2000 to meet our schedule of March 2000. CAS is in good financial shape and I feel confident our financial backers will continue with their support to at least complete the software development and training tasks. I know everyone is concerned about the future of CAS and FIMS. Bear with us, the transfer process is going to rely on FY 2000 funding decisions in the Senate and House conference committees and program carryover amounts. Politics is certainly going to be a factor.

Hang in there, we are working on a solution! I just can't envision DOE without a CAS and FIMS managing and reporting tool.

DEFERRED MAINTENANCE (DM)

The guidance for FY 99 DM reporting should be in your hands by now! Please read it carefully. The DM amount to report has changed for some of you, Right Paul! The Facility Condition Index (FCI) definition has changed. FIMS will be the sole source, since it now includes required maintenance costs along with deferred maintenance costs in its numerator.

Make sure you are providing the FIMS Building Deficiency Systems designations or CAIS WBS to your FIMS administrator for entry. The IG is doing some audits of FIMS records and the CAS sites should have 100% population rates for this field.

Some of you are not doing this! Do this for buildings, trailers, and other structures and facilities. The CAS sites have no excuses!

OCTOBER MEETING

One subject we want to discuss is COSTING. What do you want from us regarding costing tools? Ability/flexibility to make your own assemblies? Use RS Means costing CDs to do your own updates? Do you want zero based costs and information to insert your own adders for geography etc? Come prepared, we aim to please! You are the customer!

Keep the faith... we have survived worse situations. Remember when we had to shutdown the contract in '94.

See ya in Idaho partners!

PANTEX Facility Inspections

Bob Von Eschen, Pantex

Since the site has dropped the CAS Program, Jerry Williams and I are continuing to perform inspections on some 500 facilities in the three-year cycle that we had setup under the CAS program. We have not changed the inspection method nor the site management reports forms. We have been told that by October we may be cut back to inspection of our (230) "Critical" facilities only, but this will still mean about 140 facilities a year. The only complication to this is that we may also be cut back to one inspector. Best of everything, hope to see you all before too long!

Los Alamos CAIS

David McIntosh, Los Alamos

Los Alamos is moving to a modeling system for condition assessment and updating the square foot costs from RSMeans manually. The old CAIS system will be used simply to store deficiency details to support the model scores and costs we generate from inspections. The model based inspection system is really fast and comes up with costs that are within 10% or so from the detail costs from the CAIS system. Seems to work well and takes us out of the cost table

update problem. We update model cost data as we inspect based on changes in the RSMMeans square foot estimating manuals. We believe the process will fulfill the requirements for the deferred maintenance submittal and our UC/DOE contract performance measures as well as provide useful information to the Integrated Planning Office and Facility Managers.

Our new division Director (Tony Stanford) is a champion for Facility Inspections and comes to the Division with a solid facility related background. He firmly believes that robust inspections are necessary and supports our team. We are still looking forward to yet another re-organization of the Division in the near future, but it should be productive and may combine the FIMS/CAFM group and Inspections under one hat. CAFM is our internal database that feeds FIMS but contains more data regarding real property assets. I have been pushing for this for years, and now it may happen. This move will consolidate most of our facility data into one virtual database.

The budget submittal for FY00 has been submitted, and CAS is supported in this budget call. We will have to generate some revenue from the Facility Managers to round out the budget, but this should not prove to be too difficult as they are in need of our services to meet the requirements of the Laboratory's internal requirements documents. All in all, I feel confident that the program will survive here at Los Alamos.

I sincerely intend to help keep the network group alive. There is great value in the process now that we will be left to our own devices to make this work. We have much to share and mutual support will be needed more than ever. I hope all is well with the other sites and look forward to the network meeting in October.

Chair Talk

Darrell Tullock, ORNL/Network Chairman

As most of you probably have heard, the funding from DOE for CAIS Technical Support, and Ken Baker have been zeroed out for FY-2000. I hope that this is not a sign of what is to come of the CAS Programs across the DOE complexes. I realize that many sites have been struggling with the CAS Program funding issues over the past several years. However, the upcoming release of the CAIS 2000 program should greatly enhance the usability of the software and the CAS Program. The personnel at DynCorp have put numerous hours into the new look of the CAIS software, and I might add they have done an outstanding job.

As for Mr. Baker (Ken) I can not write enough to express the impact he has had on the CAS Community and me personally. As of the writing of this article it looks as though Ken will not be with us (CAS) as of Oct 1, 1999. This is not the way that we want to see Ken leave the office, but if I know Ken like I think I do he won't leave without a fight. Ken is, and always has been, the backbone of the CAS Program, and if he is forced out of office this will greatly impact the future of the CAS Program.

As for the LCAM/CAS Network Meeting we are going on as planned October 18-21, 1999. I hope to have an agenda out by August 1, 1999 this should give people plenty of time for travel arrangements. If you have a particular topic of interest that needs to be covered please let Mitzi Stone, or me know and we will see if we can accommodate your request.

Preparations for the Fall Meeting at the INEEL

Robert Olson, INEEL

Tour Arrangements have been made for Monday, October 18, 1999. I have not received any feedback on the draft itinerary published in the last Network Noise. If anyone would like to tour some other facility, please let me know. If you missed the Network Noise article, the itinerary was as follows:

The tour bus will pick up the group at the Shilo Inn and leave for the INEEL site at 8:00 AM. Each person will have to pay for their lunch, which will be at one of the site cafeterias. The bus will return to the Shilo Inn at approximately 4:30.

Three INEEL facilities will be toured. A fourth facility may also be visited if time permits.

Experimental Breeder Reactor I – This historical site is where electricity was first generated using nuclear power. It is now a tourist stop providing historical and geological information related to the INEEL. Equipment from the old nuclear jet engine project is also on display.

Test Reactor Area – Over the years this facility has supported three nuclear reactors. The Materials Test Reactor was built during the 1950's, followed by the Engineering Test Reactor and then the Advanced Test Reactor. The Advanced Test Reactor is currently operational and hopefully we will be able to visit when it is on line.

Idaho Nuclear Technology and Engineering Center – This facility was formerly known as the Idaho Chemical Processing Plant. In the 1990's, the mission

changed from reprocessing of nuclear fuel to storage and treatment of nuclear fuels and wastes. Fuel storage facilities may be of interest and the New Waste Calcining Facility may be processing liquid waste at the time of our visit.

Test Area North – This facility was established in the 1950's by the U.S. Air Force and Atomic Energy Commission Aircraft Nuclear Propulsion Program. This program ended in the early 1960's, but the facilities were converted to support a number of other DOE research projects. One facility that may be of interest is the large hot shop, which is currently being used for Three Mile Island related work. (This facility will only be visited if extra time is available.)

Dress should be comfortable and shoes should be suitable for a great deal of walking.

If you plan to take the tour, site security will need your name, work address, telephone number, date of birth, Social Security Number, current citizenship and any active clearances you hold. US citizens should send this information to me (rolson@inel.gov) by September 15, and I will get it to security. People who are not US citizens should provide me with the information by August 18 to allow for additional processing time.

Meeting Room arrangements have changed. We will now be meeting in Training Room C, located in the TSA office building in Idaho Falls. The room will have a projection screen, an overhead projector and an Ethernet connection.

If there are any other support requirements for the meeting room, please let me know and I will try to accommodate.

DOE security badges will be acceptable for building access. Individuals without DOE badges will need to obtain a temporary. We will turn in required paperwork for those attending the tour. Others who need a temporary badge should provide security information in advance to expedite the badging process.

Doors at the TSA building are keyed to INEEL badges. Individuals with badges from other sites and temporaries will need to piggyback in with locals or call numbers which will be posted at the doors.

I haven't found a way to fund snacks, but the TSA does have a snack store.

Motel Reservations can be made at the Shilo Inn. A block of rooms will be held until October 1, with a room rate of \$50 per day. The group name for the

block of rooms is "LCAM-CAS". This is probably the best motel in Idaho Falls and I think you will enjoy staying there.

We are looking forward to being the host for the fall LCAM/CAS meeting.



ETTP Condition Assessment Survey/Facility Status Review Program

Jane Nations, CAIS Administrator

Inspections at East Tennessee Technology Park are on schedule, and we anticipate all goals for this year will be met. To date, the FSR inspection team has surveyed 80 facilities for a total of 625,756 ft², and surveyed an additional 47,724 ft² for the Community Re-use Organization of East Tennessee (CROET). The remainder of the fiscal year will be spent performing inspections inside the K-27 and K-25 facilities. These two facilities are a combined total of 5,601,065 ft².

The Deferred Maintenance surveys have been completed for this fiscal year. Our current three-year inspection cycle stipulated 1,133,354 ft² of floor space be inspected this year. All surveys have been incorporated into the ETTP Facility Status Review WebPages. Costing has been performed and management is reviewing reports for final determination of repair schedules. A user-interactive program was developed for our WebPages, as a tool for management to review and select deficiencies as needed for inclusion to the annual report. We anticipate finalizing the data and forwarding the information to the FIMS coordinator for uploading by the end of August.

Secretary's Comments

Terry Christie, ORNL

I would like to thank everyone who sent me an article for the newsletter. It is your input that makes this newsletter happen.

There are several events that are taking place in our CAS Network family that I thought you would like to

hear about. First of all I would like to congratulate Kevin Kiah on his upcoming marriage. He said the wedding will probably be in March and his fiancée might possibly be at the next Network meeting so we can give our approval. We wish him a very happy and prosperous marriage. I would also like to let everyone know that our chairman, Darrell Tullock and his wife welcomed a new son, Holden Christopher, on July 24, 1999. Mother and son are doing well. This makes three children for his household.

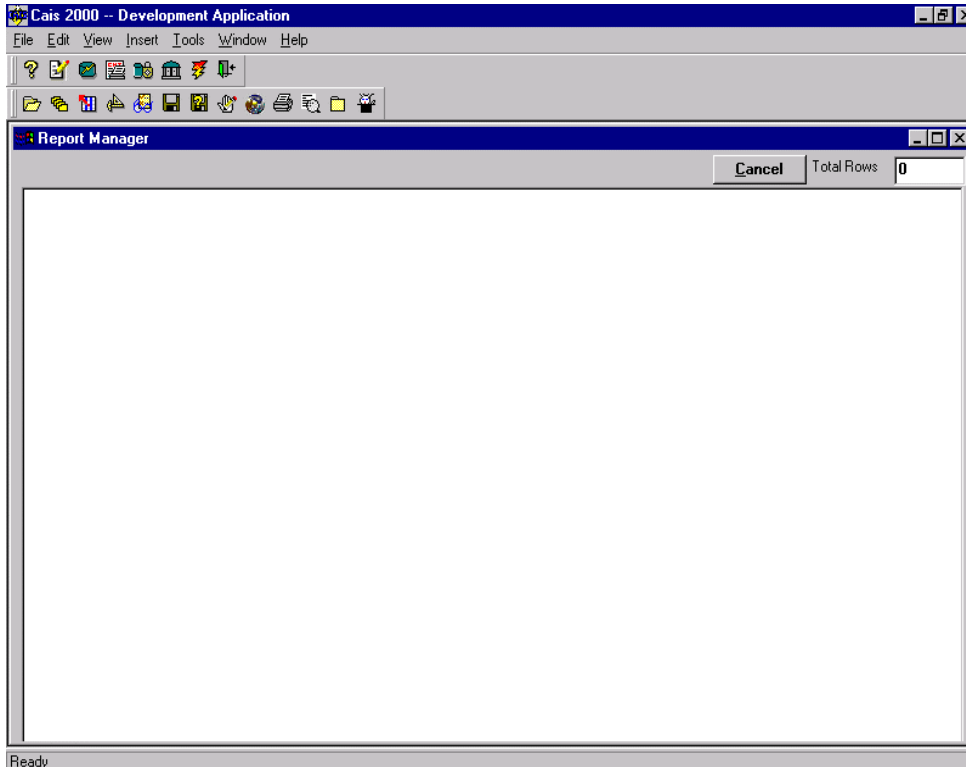


Please remember the LCAM/CAS Network meeting coming up in Idaho in October. It is very important that each site try to attend. We will be viewing the new CAIS2000 and discussing things that will concern our future.

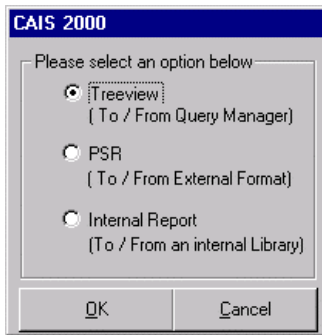
The next LCAM/CAS conference call will be held on Wednesday, August 11, 1999 at 11:00 EDT. The phone number for this call will be 301-903-6289. I hope to see you all at the meeting in October.

Anatomy of a Report Manager

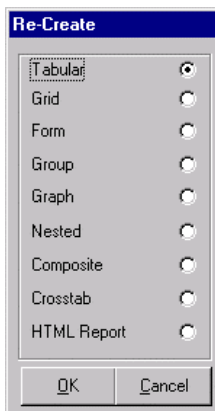
Nick Stockton, DynCorp



The *Report Manager* comprises only one module of the entire CAIS 2000 system. *Report Manager* exhibits information from the *Query Manager* module in a more tangible or executive format and provides a full ad-hoc environment for creating printed reports or WebPages.

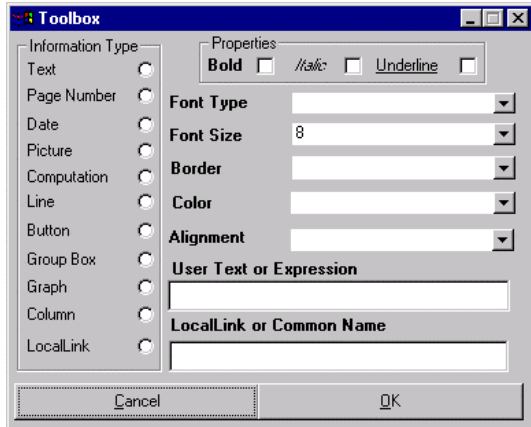


Information enters the *Report Manager* through TreeViews created in the *Query Manager*. Users can also import information either through external files; such as *PowerSoft Reports* (PSRs) or through *PowerBuilder Libraries* (PBLs) pronounced “pibbles”.



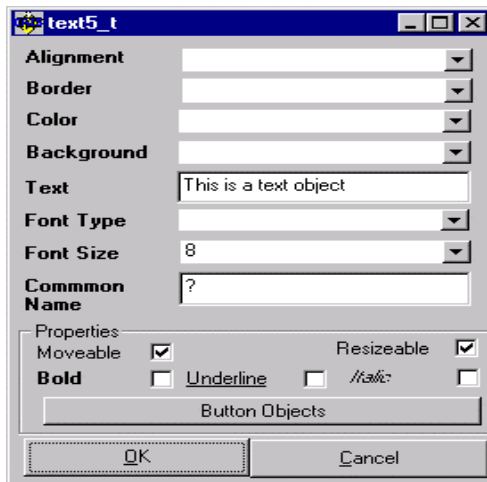
After loading a TreeView into the *Report Manager*, users can manipulate information into different presentation styles. These include:

- Tabular - displays rows and columns,
- Grid - displays lined spreadsheet format used to move, insert and deleting columns,
- Form - uses data entry fields for Query Manager or web forms,
- Group - shows a hierarchy of information,
- Graph - builds graphs using information on the report,
- Nested - links reports based on a common field,
- Composite - puts two different reports into the same window,
- Crosstab - displays column and row summary data, and
- HTML report - takes the information and assembles a web page.

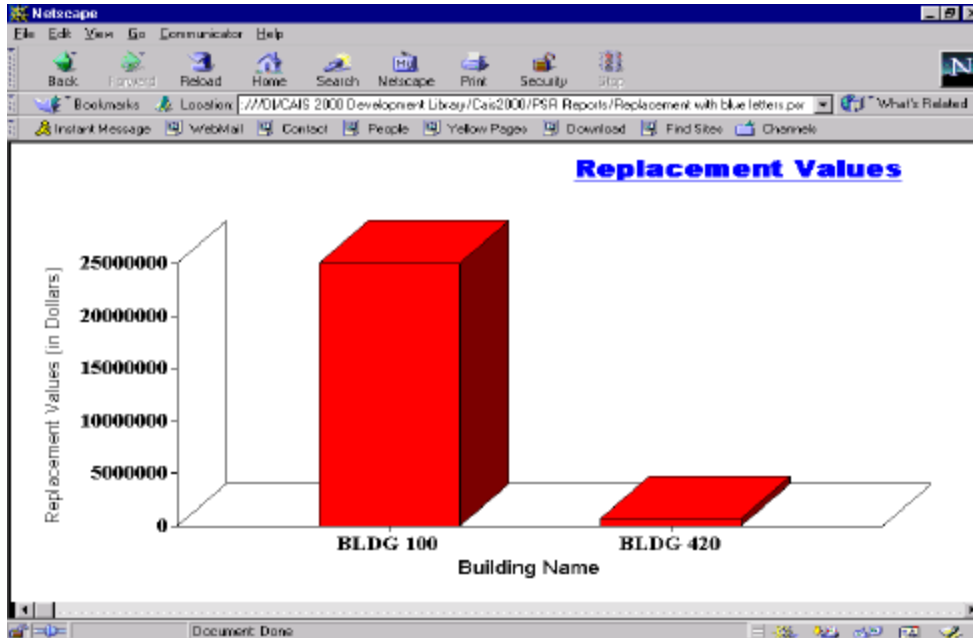


Found by selecting the toolbox icon, **Object** provides users with the basic building blocks needed to create attractive, data perfect reports. Different types of objects created from the Toolbox window include:

- Text - add and place text
- Page Number - add and place page numbering
- Date - add and place the date
- Pictures - add photos and graphics including HTML and GIF
- Computation - calculate items selected
- Line - add and place lines
- Button - add and place user friendly function buttons
- Group Box - group report items together
- Graph - import and place graphs
- Column - add and place columns of data
- LocalLink - link to a local information site



To change how an **Object** looks or behaves, *double-click* (to highlighting the **Object**) and press the *right* mouse button. This brings up the *Object Attributes box*. This screen shows an **Object** named **text5_t**. You can easily customize the **Object** until it suits your needs by using the *drop down field prompts* or the *checkboxes* in the *Object Attribute box*.



Report Manager offers you different options to save a completed report. The **Save As** button, located in the *Report Manager* menu bar, supports many common file types such as Excel 5, SQL, text, and PowerSoft Report (PSR). By saving a report as a PSR, you make it viewable over the World Wide Web. However, the appropriate PSR plug-in must be installed to view the report.

The *Report Manager* simplifies the presentation of valuable information in the CAIS 2000 System. *Report Manager* formats TreeViews with ease into printed documents, external files, or World Wide Web site exhibits. The unique flexibility of the *Report Manager*, combined with *Report Manager's* powerful graphing and object formatting, makes CAIS 2000 the best tool for fighting deficiencies in the new millennium.