

---

# NETWORK NOISE

---

Volume 4, Issue 2

Terry Christie, Editor

May 1999

---



## Monitor Musings

*Ken Baker, FM-20, DOE*

## Deferred Maintenance Update

Deferred Maintenance guidance has been drafted by Field Management and will be distributed no later than April 30. It basically consolidates last year's guidance into one document. New fields for FIMS entry include annual "required" maintenance costs and annual "actual" maintenance costs. These costs were discussed at the CAS M&O Users Group meeting. Assessment extrapolation methods are a no no now for conducting inspections. Past extrapolation results will be escalated using inflators in the guidance.

## CPV Study Update

Field Management will be conducting a comparison study of CPV, RPV and FRV on the thirty buildings that were included in the CPV study last year. We hope to compare and evaluate the CPV, FRV, and RPV at the three CPV study sites and calculate a facility condition index (FCI). If the sites feel the FRV accurately represents the valuation of the existing building, our CPV study will be finished and the FRV will be proposed for use in FIMS to calculate the FCI.

## FIMS RPV Study

FM and the CAS contractors are looking into the possibility of using RS Means and their databases to derive new replacement plant value unit costs of buildings and OSF's. These values will be only

determined for non-unique buildings and OSF's. Contractors estimators will be responsible for unit costs for facilities that are unique to DOE i.e. accelerators and nuclear laboratories or processing buildings.

## Desk Top Survey Classes

The CAS contractors will be working on preparations for four two-day training sessions dealing with the new desktop survey methods of CAIS 2000. Classes will be given at a training location probably in November or December of this year. Class size will be limited to 12 inspectors. Stay tuned to the NN for more information.

## ETTP Condition Assessment Survey/ Facility Status Review Program

*Jane Nations, CAIS Administrator, ETTP*



The East Tennessee Technology Park CAS representatives were able to attend the LCAM/CAS Network meeting last month. Being our first opportunity to attend, we were not sure what was in store. We had a very good meeting, and enjoyed meeting many of you face to face for the first time. We especially enjoyed the CAIS 2000 overview, and getting a feel for what other sites are doing with the CAS program and facility surveys. We brought back several ideas, which we are contemplating incorporating into our program here at ETTP.

Our survey program has progressed well this year. We have surveys scheduled in 92 facilities

encompassing nearly 7,000,000 square feet for FY 99. Halfway through FY99, we surveyed 55 facilities totaling approximately 2,000,000 square feet. Ninety percent of the facilities scheduled for inspection are in the Surveillance and Maintenance Program (S&MP) and are fully inclusive surveys. As a general rule, these surveys will require CAS, Facility Status Review (FSR) checklists, roof inspections, photographs, inspection summary details, and red-line drawings. The remaining facilities are surveyed only for Deferred Maintenance purposes, and include CAS and a shortened version of the normal survey.

## **Pantex NO-CAS Status**

*Bob Von Eschen, Pantex*

WE of the past Pantex CAS/CAIS program service are disturbed by the demise and find NO diminished need for the program at Pantex. Jerry Williams and myself are still on the job, but our assignment has been Building Manager/Facility Inspector. We also understand that as of next week we will be just Building Managers, but no change in duties. Building Manager duties are confined to the Balance-Of-Plant facilities, whereas the Facility Inspection duties are generally to perform the Preventive Maintenance Surveillance Tasks on the critical buildings such as for Facility Structural (Blast Design), Lightning Protection, Overburden, and special procedures.

Evidence of the CAS/CAIS program is nearly gone with the excessing of the program/system computers and the dismantling of the Pantex CAS Computer Network. We have requested that the five years of CAS Inspection records and the many photographs of the buildings, roof, and other deficiencies be saved. But, shortly the hardcopy files of the individual building inspections may be the only remaining elements of the program.

## **Past-Chairman Final Notes**

*Bob Von Eschen, Pantex*

I would like to take this opportunity to thank the members of the LCAM/CAS Network for their support in keeping the network operating, and aid in performance of my position as Chairman. I hope get to come to another Network meeting and personally express my thanks to you, plus my appreciation of the

beautiful plaque you gave me to acknowledge my service. My best wishes for the continuation, success and expansion of the program and network. Please contact me should I be of any help or support in the future. Thanks, Bob.

P.S. Thanks also to the many of you for the cards and calls of support on the loss of my wife. I can't express how great it feels to be a part of an organization, made up of so many thoughtful people.

## **From the Chairman**

*Darrell Tullock, Chairman, ORNL*

First of all let me begin by saying thanks to Bob Von Eschen for the work that he has done for the past three years as chairman of the LCAM/CAS Network Group. He will be missed in the CAS Network community.

I would also like to say a special thank you to the Nevada Test Site for letting us use their facilities for our last meetings; we could not have asked for any better accommodations than what we received.

At our LCAM/CAS Network meeting held in March in Las Vegas we had 18 attendees. There was a great deal of discussions from the sites that are using the CAIS software as their condition assessment tool. I appreciate all the effort that is made by all to attend these meetings.

The CAIS 2000 software (the next version of CAIS) was a very hot topic that received the majority of the attention at the meeting. Special thanks goes out to Kevin Kiah, Nick Stockton, and Brett Platko from Dyncorp who did a great job presenting CAIS 2000 to the group. We are all eager to get our hands on the new release.

As Co-Chairperson of the LCAM/CAS Network Group, I assumed the role of Chairperson due to the departure of Bob. In turn this left a vacancy in the Co-Chairperson's position. After a great deal of debate and thought (about 30 seconds) Mitzie Stone from Yucca Mountain was nominated and elected as the new Co-Chairperson. I am looking forward to working with Mitzie in the upcoming months.

I would also like to thank Jane Nations and Bobby Latham from East Tennessee Technological Park (ETTP) and Dick Schlueter from Bechtel Nevada Test

Site for showing us their web sites and how their site is using the CAS information. The sharing of information from site to site is the number one purpose of these meetings and I hope to get more presentations from other sites on how they are collecting, using, and distributing the information at their site.

## CAS at ORNL

*Darrell Tullock, ORNL CAS Program Manager*

The CAS Program at ORNL is coming upon its six-year anniversary. We have five full time inspectors an Inspection Coordinator and a Program Manager. We continue to be funded through the maintenance department overhead budget. We inspect 1/3 of our facilities a year with the roofs and sidewalks being inspected on an annual inspection cycle. Also this year we will be inspecting over 48 miles of fencing and 121 miles of road on, and around, the reservation. We are involved in assisting other programs in gathering pertinent information for their systems: FIMS (Facility Information Management System), The Asbestos Program, and The Preventive Maintenance Program.

From the technological side we are currently using digital imagery to better show our deficiencies. We also have incorporated into our program the infrared camera technology through Inframetrics. This technology allows us to better determine the condition of our electrical systems, roofing systems, mechanical systems, and the efficiencies of the exterior construction of our facilities. With these tools the possibilities are endless of how they can be used, and how effective they are in getting the attention the deficiencies need.

We have a growing program that continues to gain the needed support with every presentation given, with every picture, or with every deficiency entered into the database. We are looking forward to the future as we continue to venture into new territories that we have never been to before.

## Preparations for the Fall Meeting at the INEEL

*Robert Olson, CAS Inspector, INEEL*

**Tour Arrangements** have been made for Monday, October 18, 1999. Currently the tour is planned to include:

Experimental Breeder Reactor I – This historical site is where electricity was first generated using nuclear power. It is now a tourist stop providing historical and geological information related to the INEEL. Equipment from the old nuclear jet engine project is also on display.

Test Reactor Area – Over the years this facility has supported three nuclear reactors. The Materials Test Reactor was built during the 1950's, followed by the Engineering Test Reactor and then the Advanced Test Reactor. The Advanced Test Reactor is currently operational and hopefully we will be able to visit when it is on line.

Idaho Nuclear Technology and Engineering Center – This facility was formerly known as the Idaho Chemical Processing Plant. In the 1990's, the mission changed from reprocessing of nuclear fuel to storage and treatment of nuclear fuels and wastes. Fuel storage facilities may be of interest and the New Waste Calcining Facility may be processing liquid waste at the time of our visit.

Test Area North – This facility was established in the 1950's by the U.S. Air Force and Atomic Energy Commission Aircraft Nuclear Propulsion Program. This program ended in the early 1960's, but the facilities were converted to support a number of other DOE research projects. One facility that may be of interest is the large hot shop, which is currently being used for Three Mile Island related work. (This facility will only be visited if extra time is available.)

If anyone would like to tour some other facility, please let me know. The current itinerary is just something I put together. It can be changed if there is specific interest in other locations. Please visit the INEEL web page at [www.inel.gov](http://www.inel.gov) to learn more about the INEEL.

Tentatively, the bus will pick up the group at the motel at 8:00 AM and return by 4:30.

Each person will have to pay for his or her lunch. Lunch will be at one of the site cafeterias. Dress comfortably, and expect a great deal of walking.

If you plan to take the tour, site security will need your name, date of birth, Social Security Number, and a confirmation of US citizenship. Our tour options will be limited if we have any people who are not US citizens. Please send this information to me ([rolson@inel.gov](mailto:rolson@inel.gov)) and I will get it to security.

**Meeting Room** arrangements have been made at the Engineering Research Office Building (EROB) in Idaho Falls. The room will have a projection screen, an overhead projector and an Ethernet connection.

If there are any other support requirements for the meeting room, please let me know and I will try to accommodate.

I haven't found a way to fund snacks at this time, but the EROB does have a cafeteria.

**Motel Reservations** can be made at the Shilo Inn. A block of rooms will be held until October 1, with a room rate of \$50 per day (the confirmation letter is pending). The group name for the block of rooms is "LCAM/CAS Meeting". This is probably the best motel in Idaho Falls and I think you will enjoy staying there.

We are looking forward to being the host for the fall LCAM/CAS meeting.

## Notes from the Editor

*Terry Christie, LCAM/CAS Secretary, ORNL*

First let me thank all that contributed articles for the newsletter. This is your newsletter and is of no benefit to anyone if we don't get informative information to print.

I also would like to express what a great meeting we had in March. DynCorp personnel did a very good job

of demonstrating the CAIS 2000 and the things we can look for in the future. We are all anxiously awaiting the arrival of this new and improved system.



*LCAM/CAS group March 18 in Las Vegas*

On a sad note we were very sorry to hear the demise of the Pantex group and also of Robert Hampton of Los Alamos. Both have been with this group since the beginning and they will be sorely missed by all.

The next LCAM/CAS meeting is scheduled to be held in Idaho, October 18-21, 1999. I hope everyone will try to make plans to attend this very important meeting. The new software will be out and in use by this time and I am sure we will have a lot to share with each other on what we think of it. It will also give us a good opportunity to let DynCorp what, if any, improvements or fixes we are in need of. I will let you know more details when they become available.

Also please remember the monthly conference calls held the second Wednesday of each month.



# Anatomy of a Query Manager

Nick Stockton, DynCorp

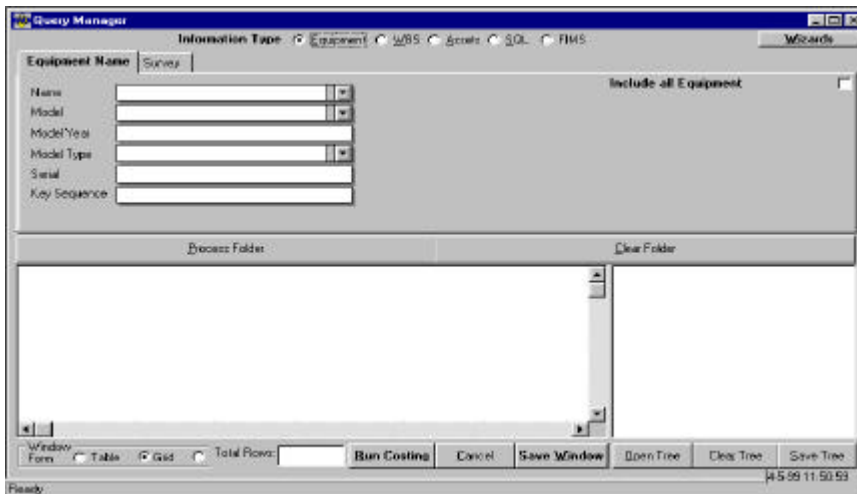


Figure 1 - Query Manager Screen

The Query Manager is a fundamental module in the CAIS 2000 application. It is a tool for collecting and displaying information contained within the CAIS database. Instead of drilling down levels of information, as in the current CAIS 3.5 application, the Query Manager has a free-form approach to data retrieval. The CAIS administrator picks what information is to be queried from ANY level of the CAIS hierarchy. The query result "Window" can be manipulated saved or exported into many applications. This article highlights new features the Query Manager has to offer.

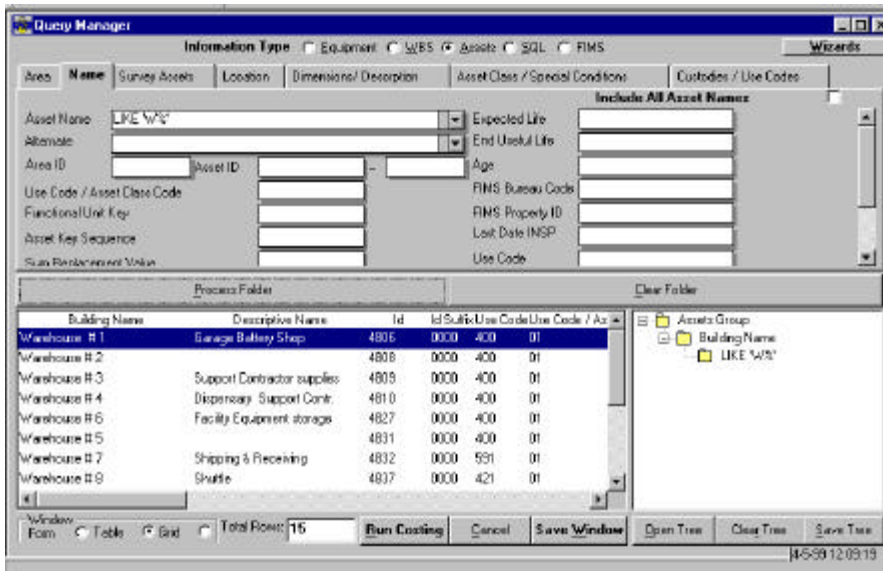


Figure 2

## How the Query Manager Works?

Tabs are a key construct in the Query Manager interface. Each different type of information: asset, equipment, or WBS has their own set of tab pages. There are two ways to enter information into a Query: typing information into a field or

selecting the [Include all] checkbox, located at the top right hand corner of every tabpage. Operators can also be used in limiting or filtering your search. For example, in the figure 2 all building names that start with a “W” have been captured using the LIKE operator and the “W%” wildcard symbol.

## Tools in the Query Manager

There are several tools incorporated into the Query Manager that make it user friendly and function rich. They are sorting and filtering functions, the “Save As” button, Treeviews (for storing and opening saved queries), the SQL editor, and wizards (for common CAIS 2000 tasks).

Sorting and filtering capabilities are used from within a window. Sorting displays information in ascending or descending. Filters are expressions used to further limit data in the window.

The “Save As” button takes the information expressed in the window and exports it into another file format. Some of the formats supported include Excel 5, Text, and dBase. This is especially useful in exporting information into different databases. Saving a window as Excel 5 supports easy migration into Microsoft Access and a window saved in dBase III can be imported into Oracle.

Treeviews are used to save queries built in the Query Manager. It is called a Treeview because of the way the construction hierarchy looks on the screen. With each additional piece of selection criteria, the query “branches” out an additional level. Notice the Treeview in the Figure 3, it tells the user key information about how the query is constructed. When multiple queries are defined, a user can select which one they would like to use by double clicking on its tree. Treeviews are the way information is sent to other CAIS 2000 modules such as the Report Manager. In addition, Treeviews can be run against many common database systems such as Oracle and MS Access.



Figure 3

The Query Managers Standard Query Language (SQL) Editor provides an easy interface for line commands. SQL is supported in most major database platforms. Advantages of the SQL Editor are: easy to read interface, clipboard support (Cut, Copy, Undo, Delete and Paste text), and it allows great flexibility in creating windows. A SQL query displayed in a window can use the Sort, Filter, and “Save As” functions. In addition, SQL query can be saved in a Treeview, making them usable in other CAIS 2000 modules. A sample SQL query can be seen in Figure 4.

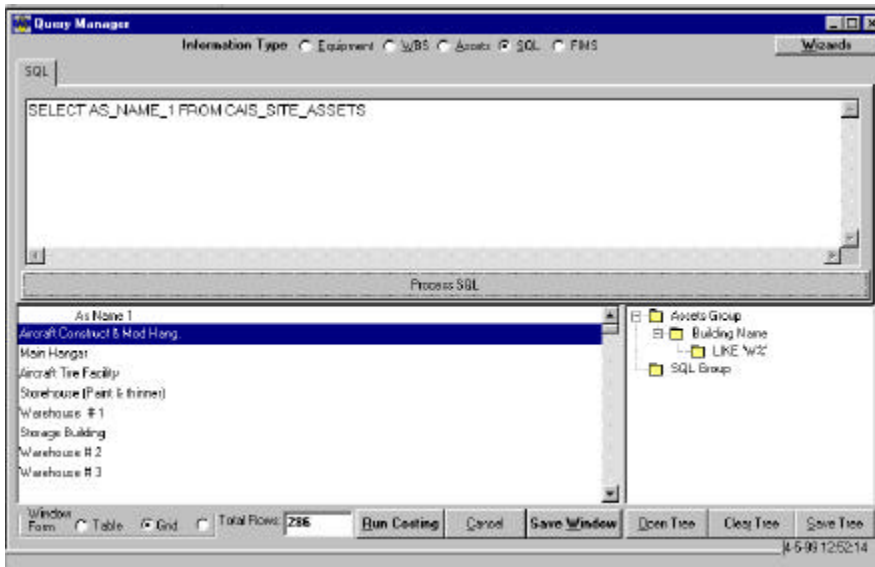


Figure 4

CAIS 2000 Wizards are useful in helping people use the CAIS system. They cover many of the common tasks involved in operating the Query Manager. There are two types of Wizards in the Query Manager: “How To” and “Full Function”. The “How To” Wizard (Figure 5) walks the user through the steps in building a query. The “Full Function” Wizard actually does the process for the user. Wizards will be used in other modules of CAIS 2000, such as the Report Manager, in successive builds of the program.

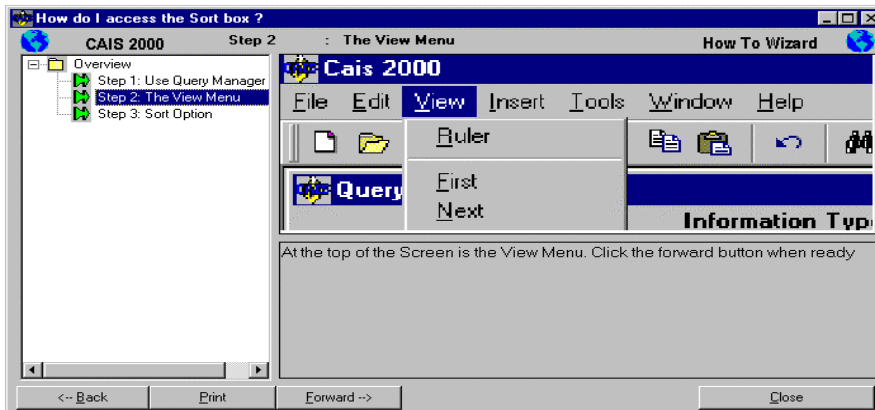


Figure 5

The Query Manager is packed with functions and tools making information gathering an easier task. The “Save As” button provides data export to many applications while the sort and filter functions provide an easy interface separating and manipulating data. Wizards provide an interactive information resource for CAIS administrators and make the whole CAIS application easier to use. All of these items make the CAIS 2000 – Query Manager a premiere database tool, helping to fighting deficiencies in the new millenium.