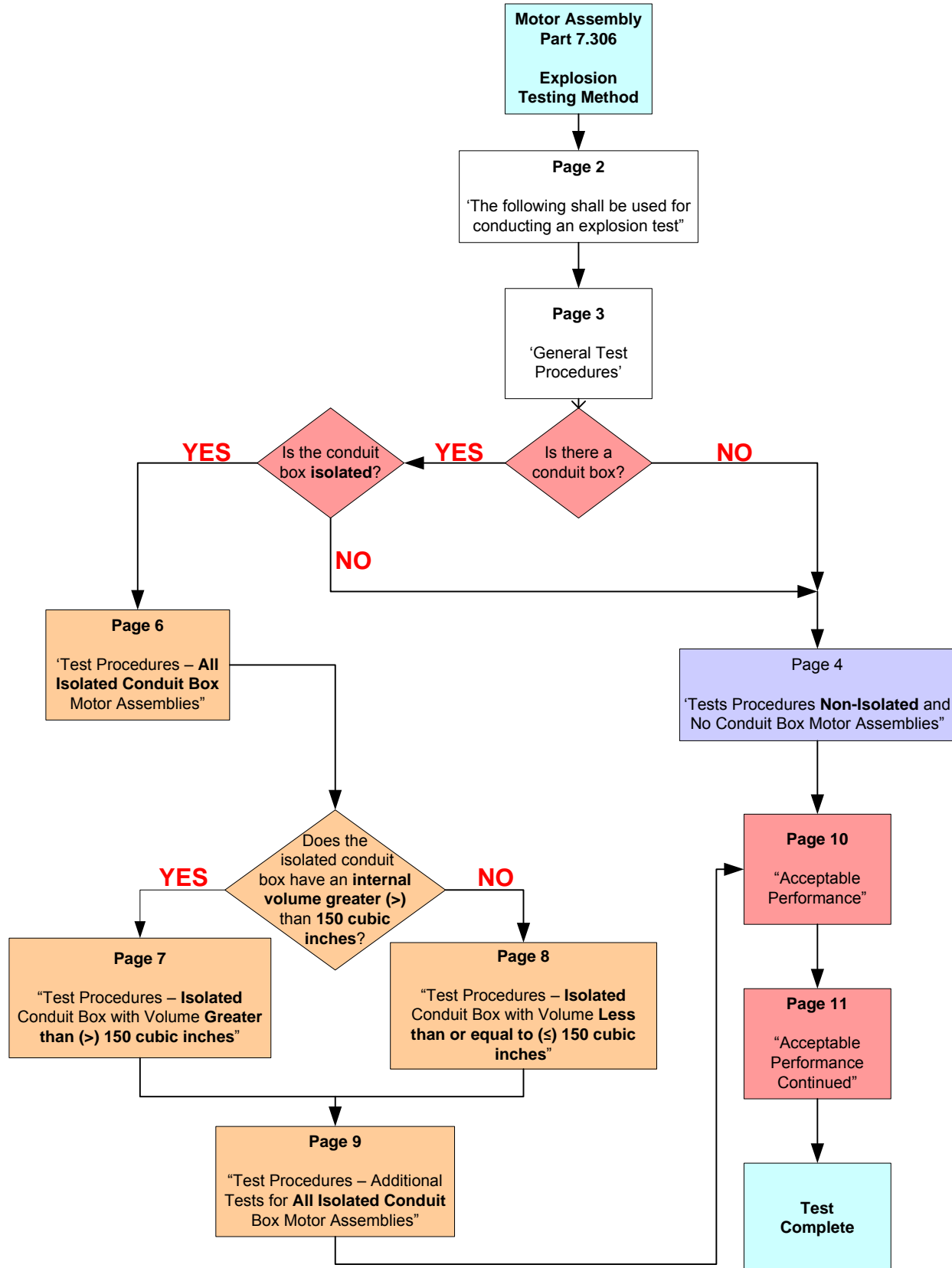


EXPLOSION TESTS

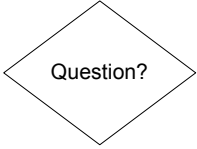





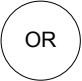
TITLE 30 CFR PART 7.306

FLOW CHARTS



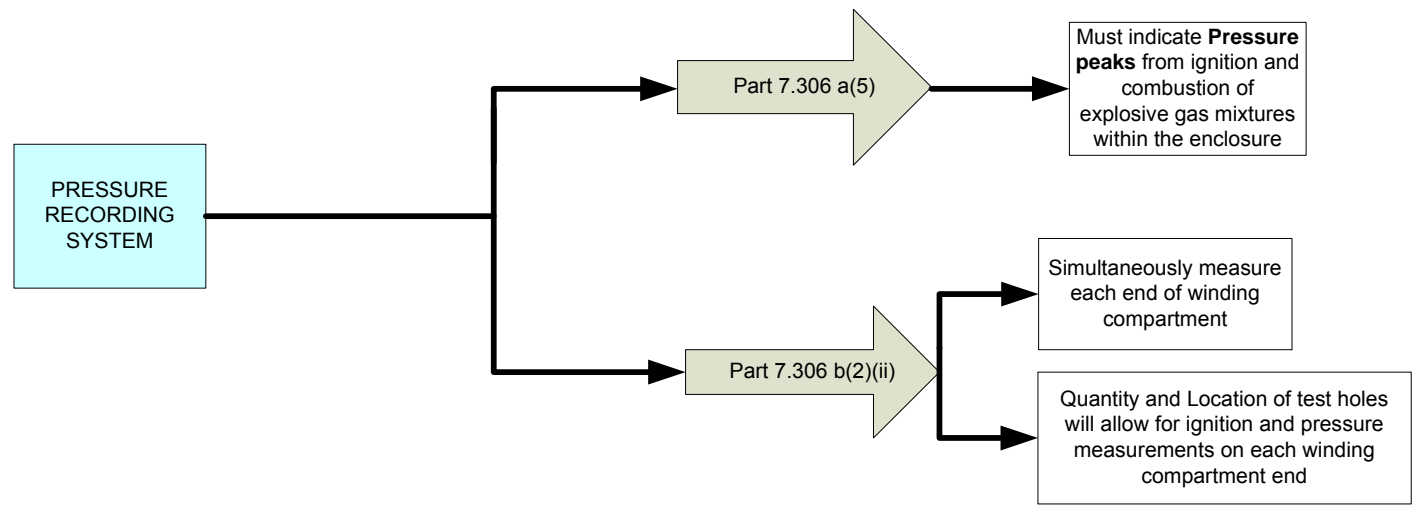
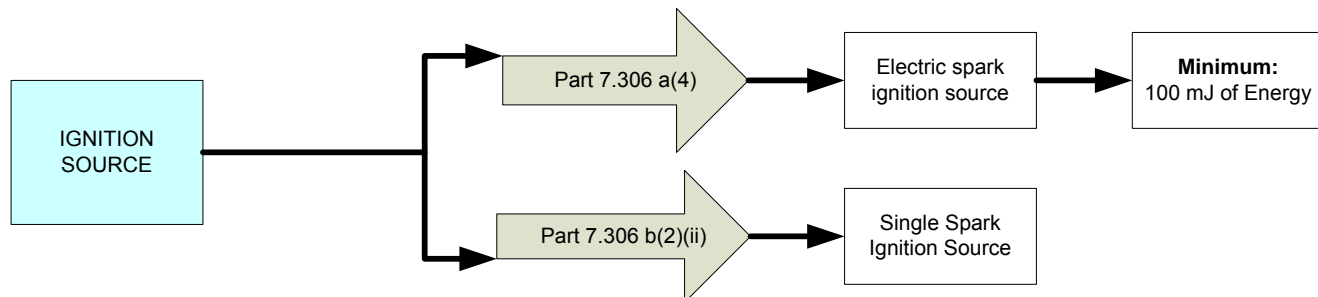
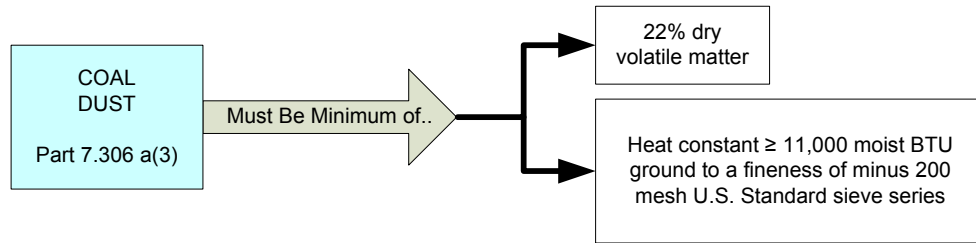
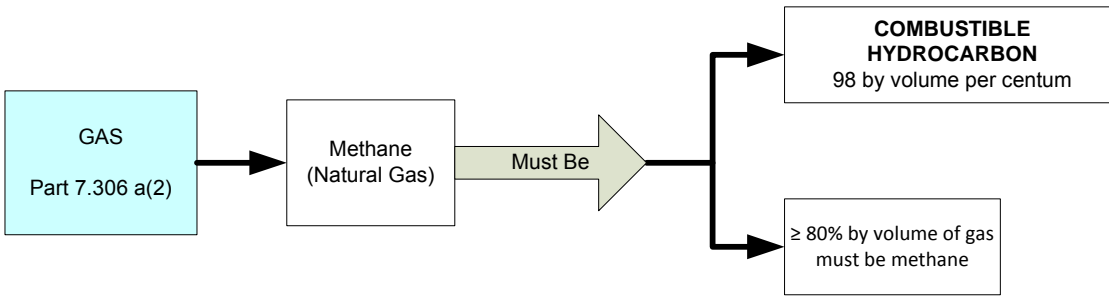
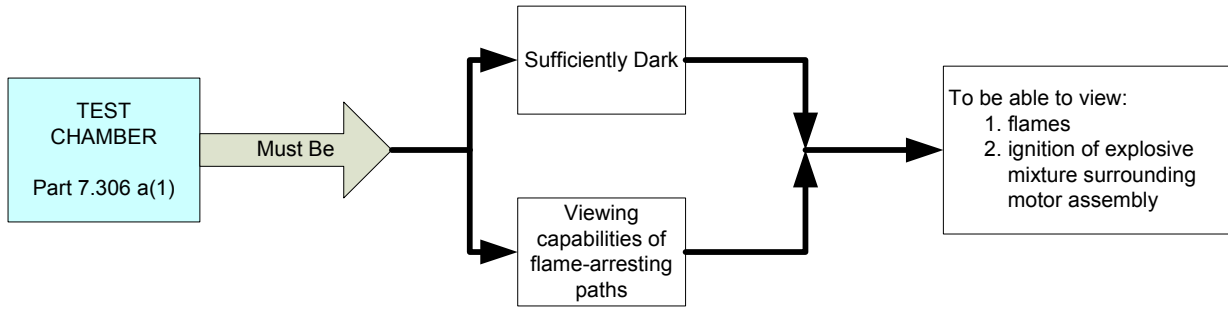
LEGEND OF FLOWCHARTS

PAGE 1

BOLD RED LETTERING	Answer Path for Asked Question
	Question Box
	Isolated Conduit Box Procedure
	Non-Isolated Conduit Box Procedure
	Non-Isolated and Isolated Conduit Box Procedure
	Side Note/Extra Information
	Leads to Side Note/ Extra Information
	'or' - Optional Path

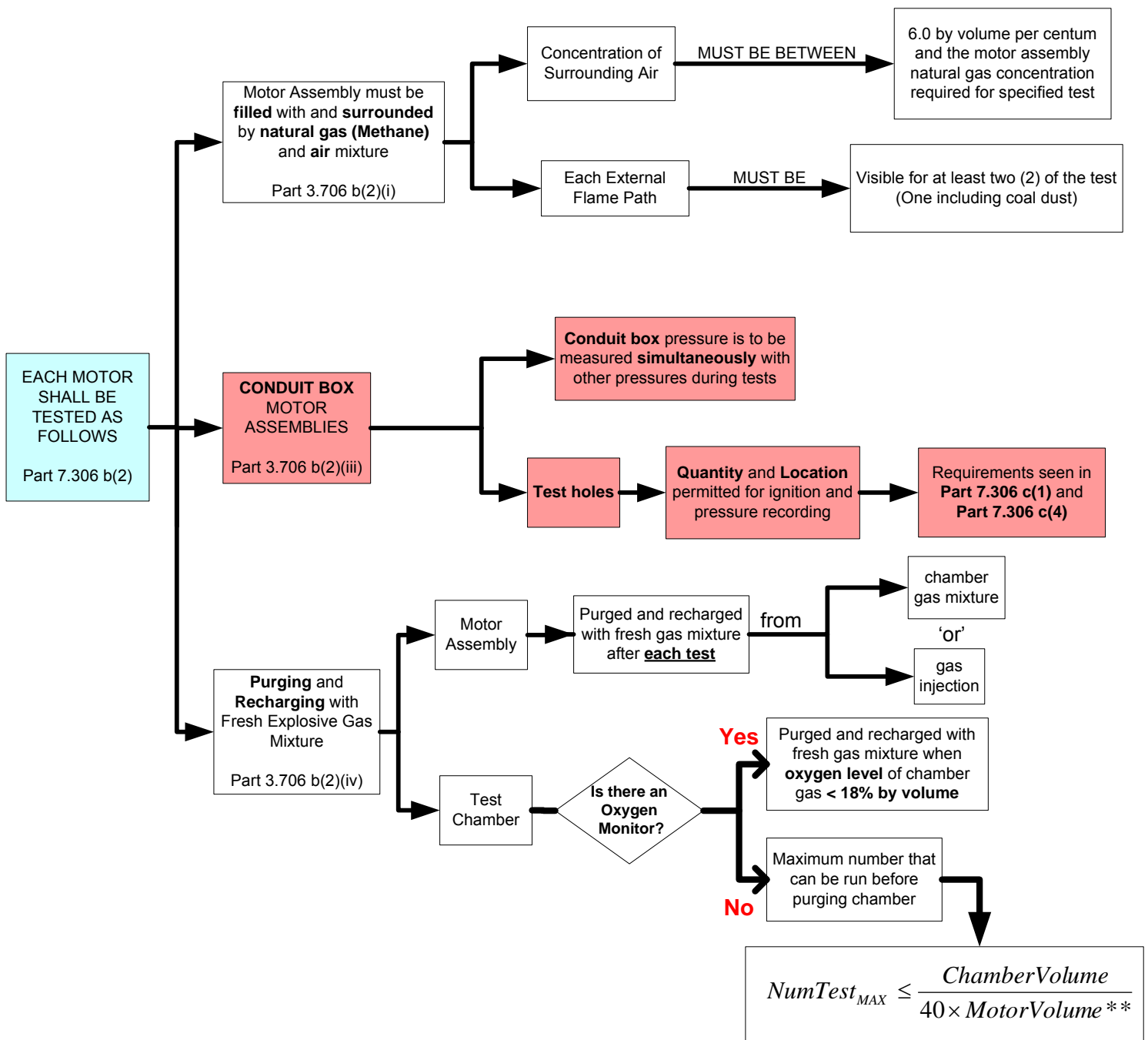
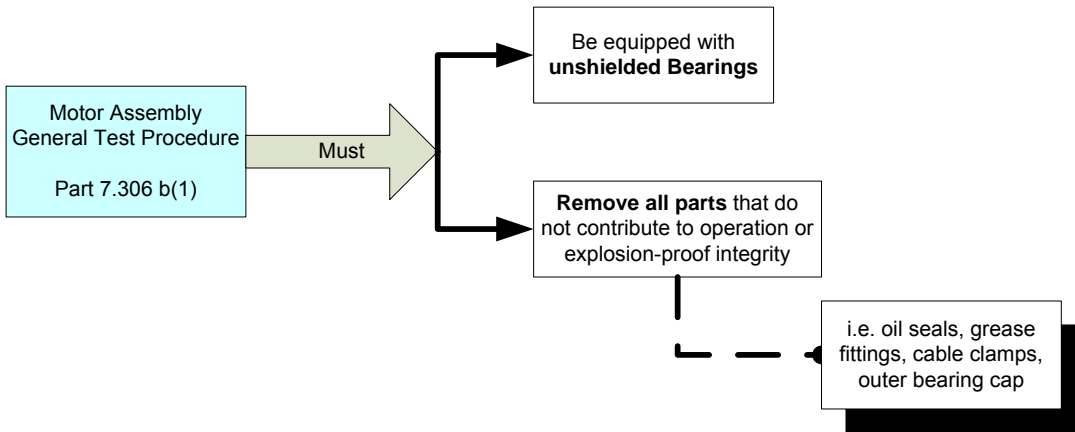
THE FOLLOWING SHALL BE USED FOR CONDUCTING AN EXPLOSION TEST

PAGE 2



GENERAL TEST PROCEDURES

PAGE 3

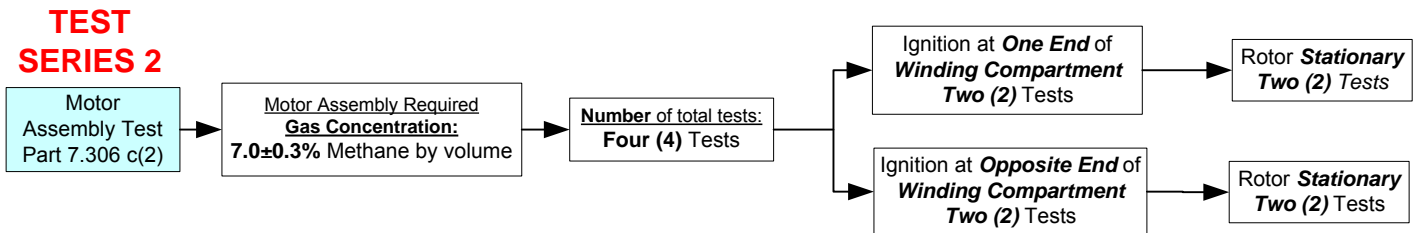
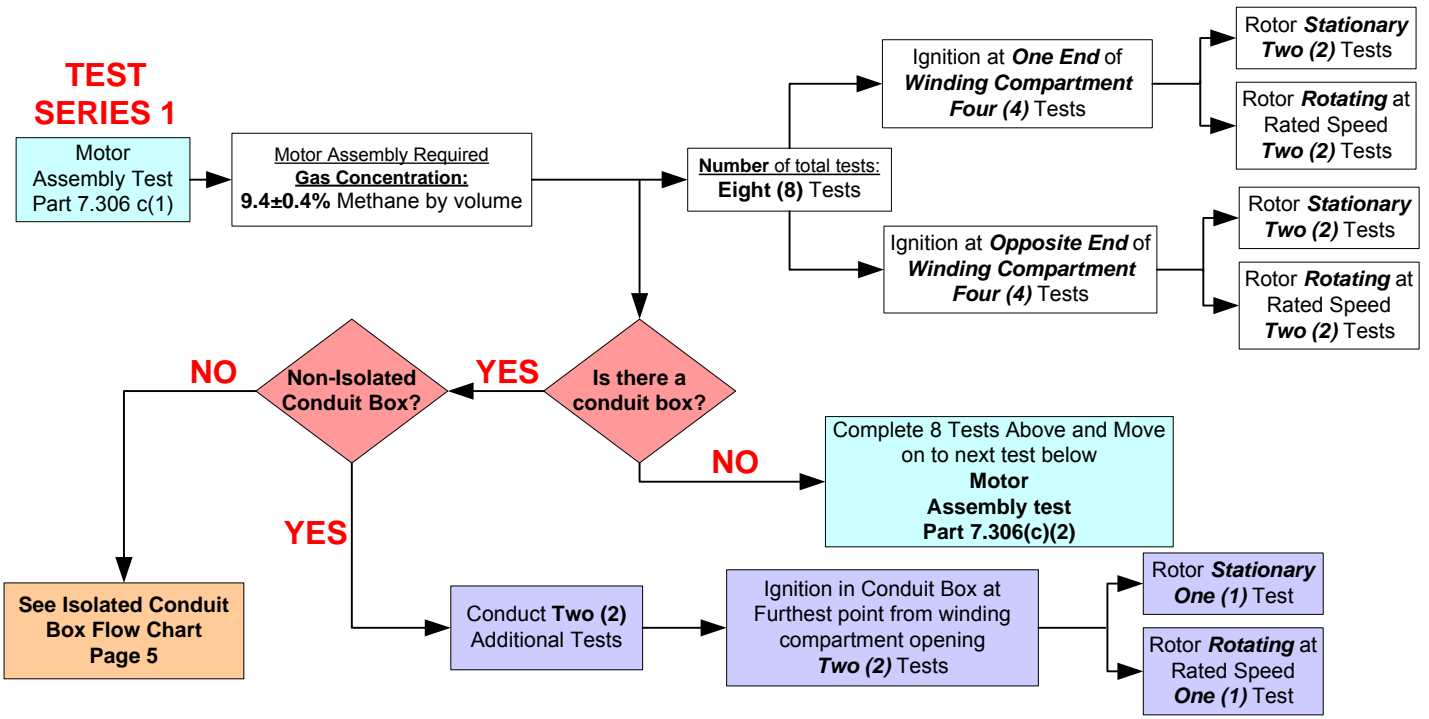
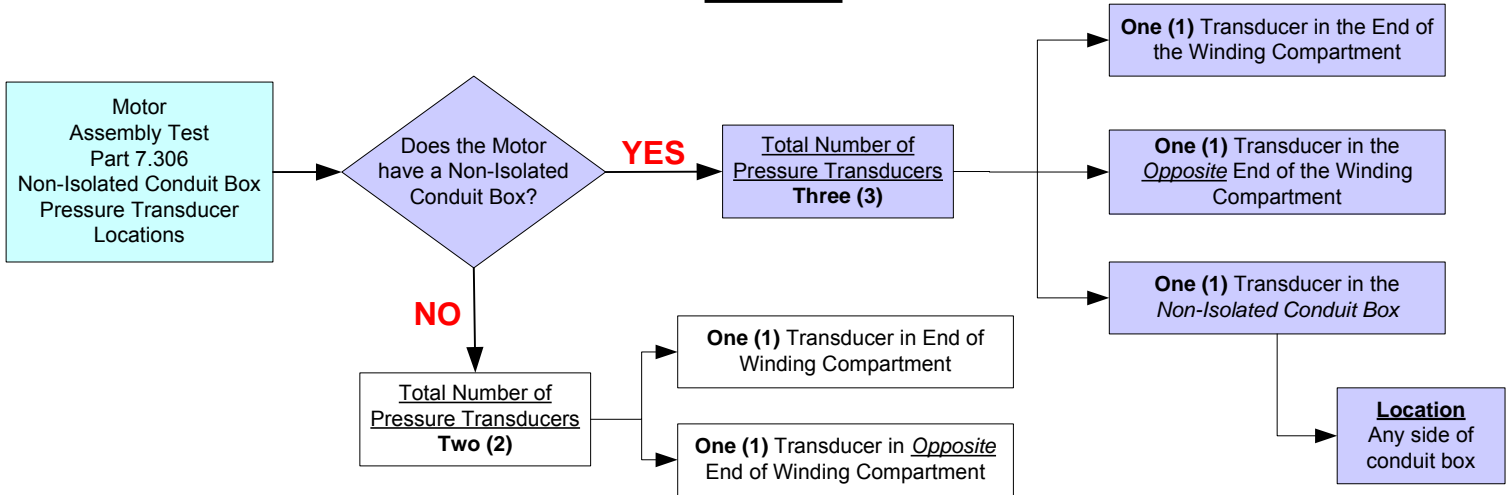


** Motor Volume = the Volume occupied by Motor

TEST PROCEDURES

NON-ISOLATED AND NO CONDUIT BOX MOTOR ASSEMBLIES

PAGE 4



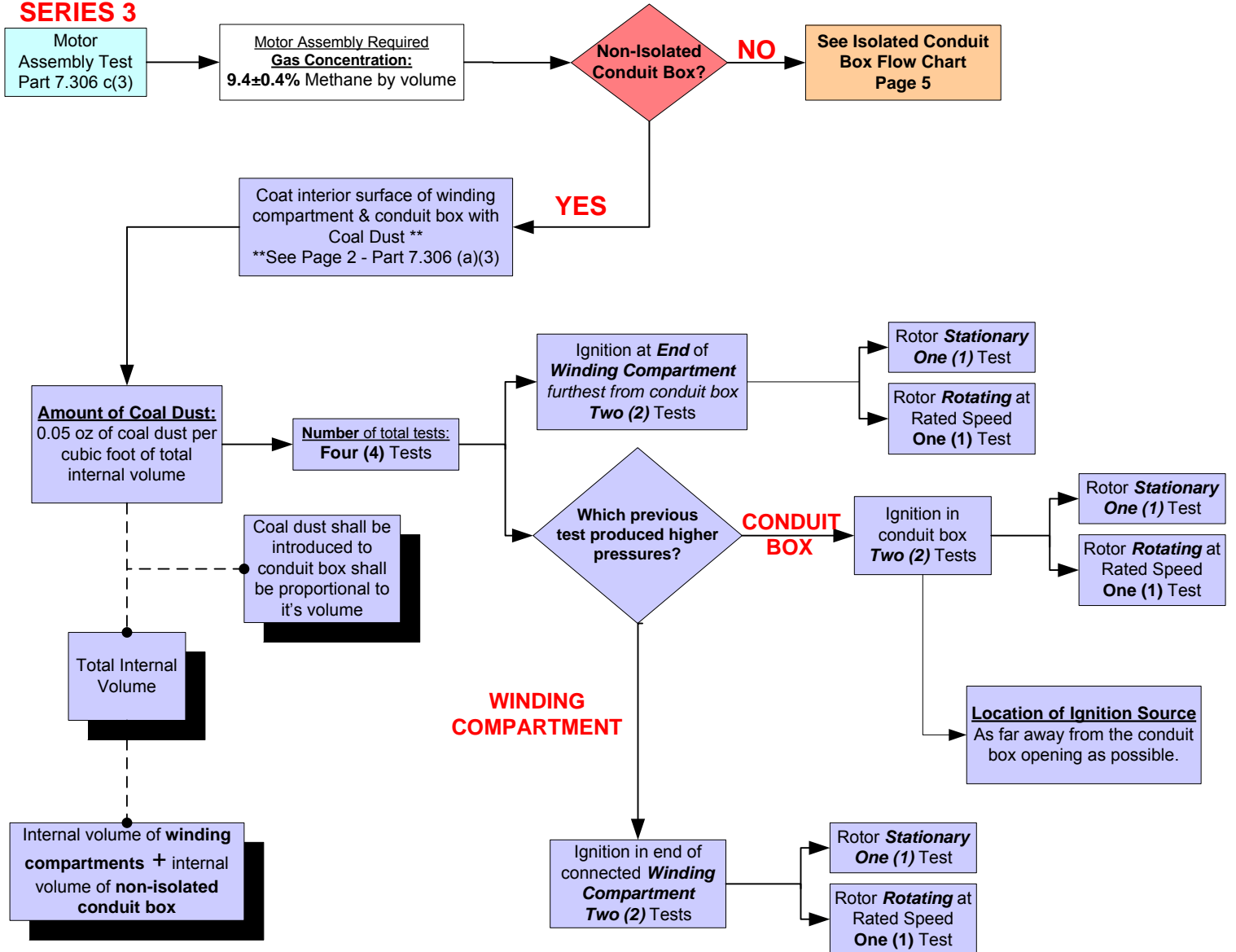
Continue on to Next Page – Page 5 for Test 3 of Non-Isolated Conduit Box Motors

TEST PROCEDURES

NON-ISOLATED AND NO CONDUIT BOX MOTOR ASSEMBLIES CONT.

PAGE 5

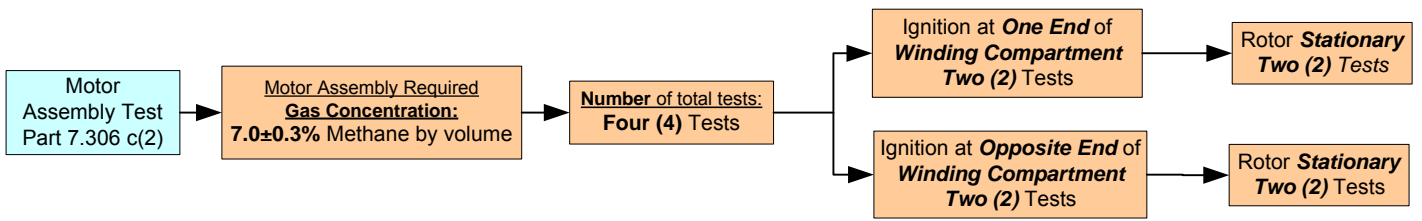
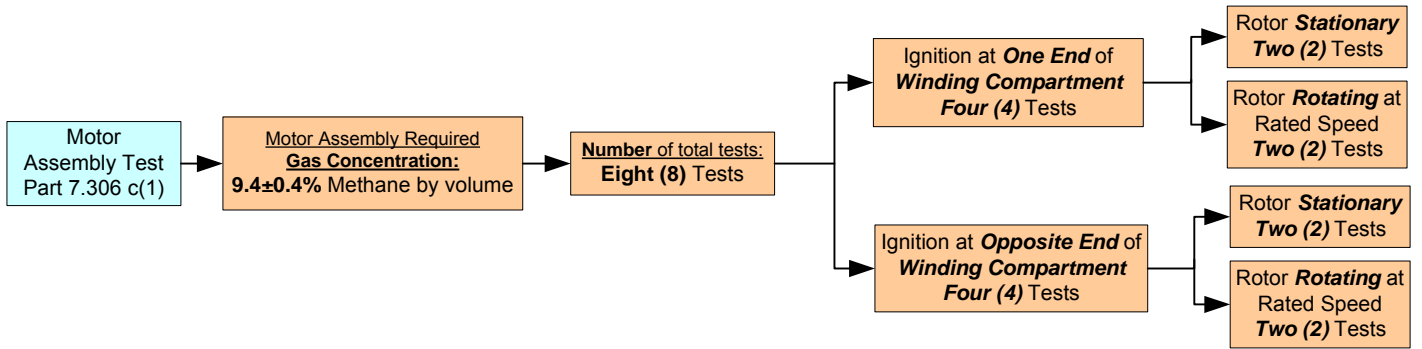
TEST SERIES 3



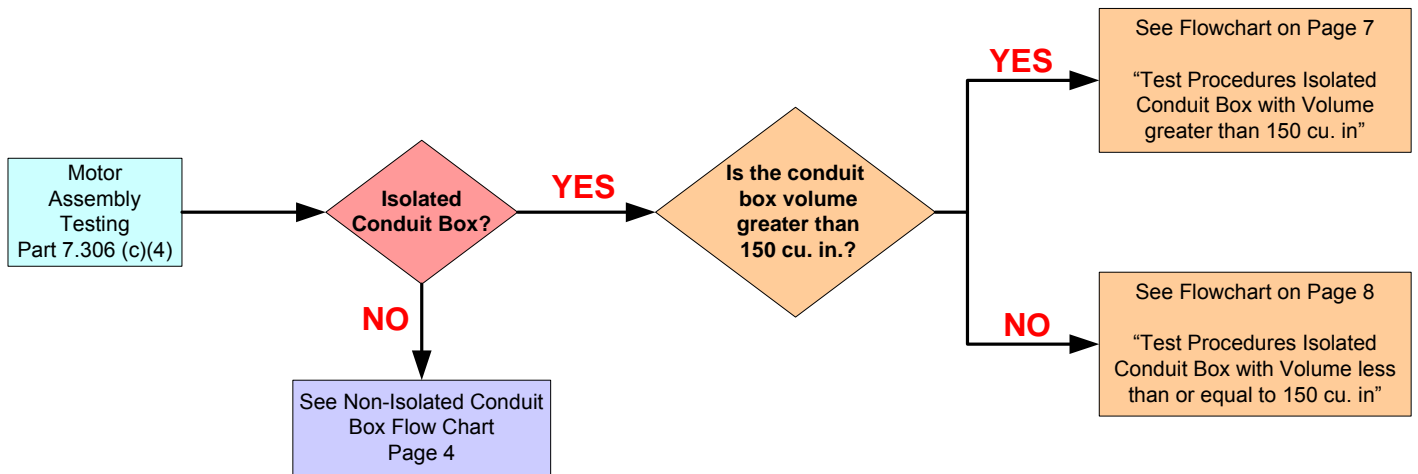
TEST PROCEDURES

ALL ISOLATED CONDUIT BOX MOTOR ASSEMBLIES

PAGE 6



Part 7.306 (c)(4) Additional Testing for Isolated Conduit Box

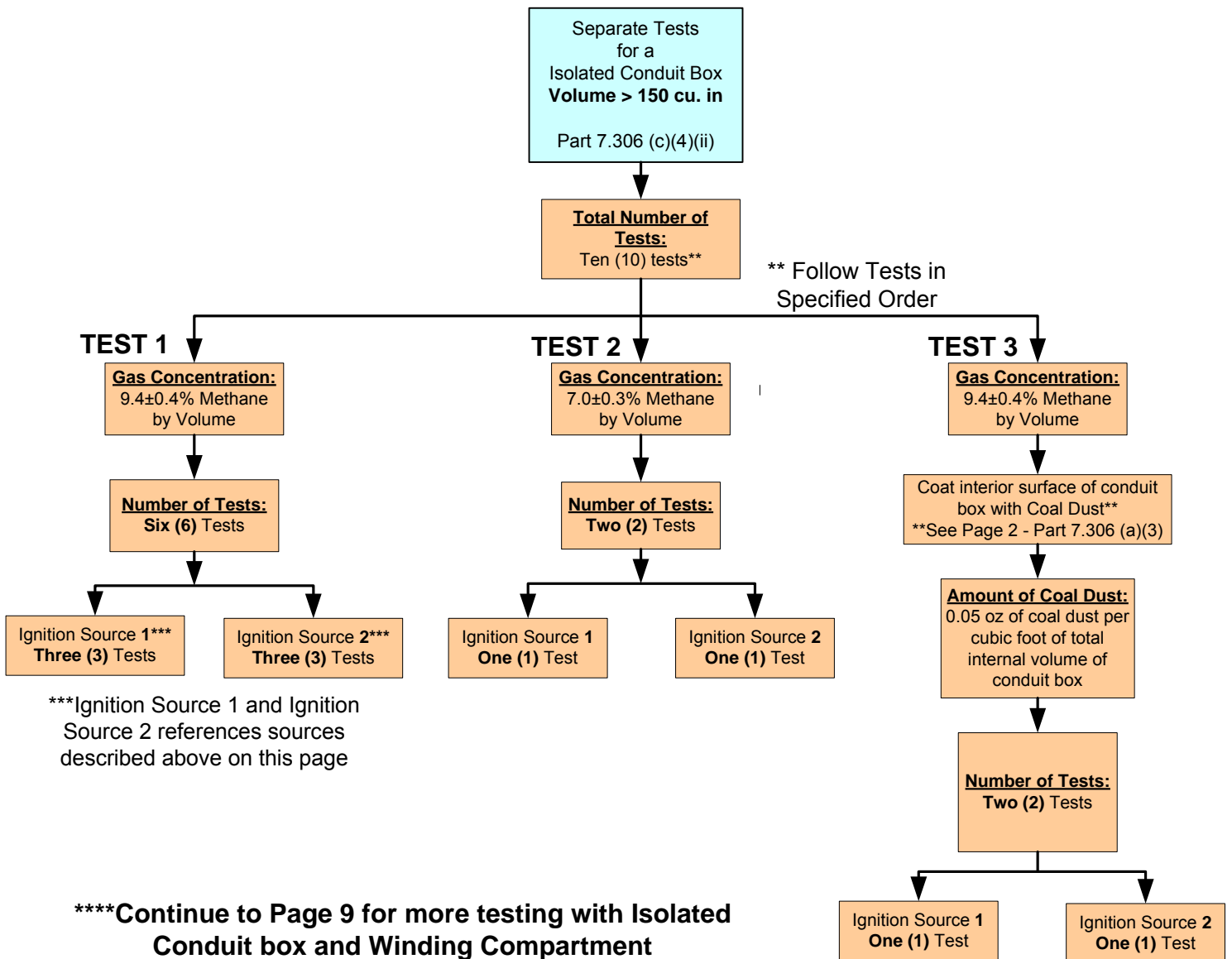
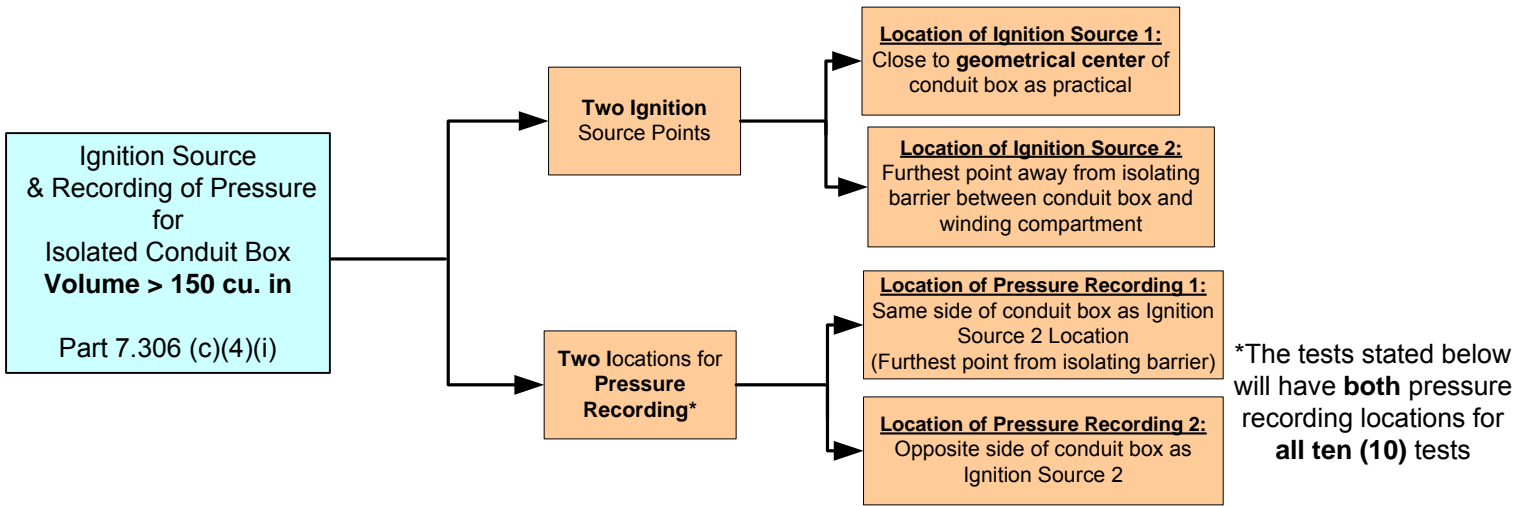


TEST PROCEDURES

ISOLATED CONDUIT BOX WITH VOLUME GREATER THAN (>) 150 CUBIC INCHES

PAGE 7

Part 7.306 (c)(4)(ii) – Isolated conduit box must also be tested separately

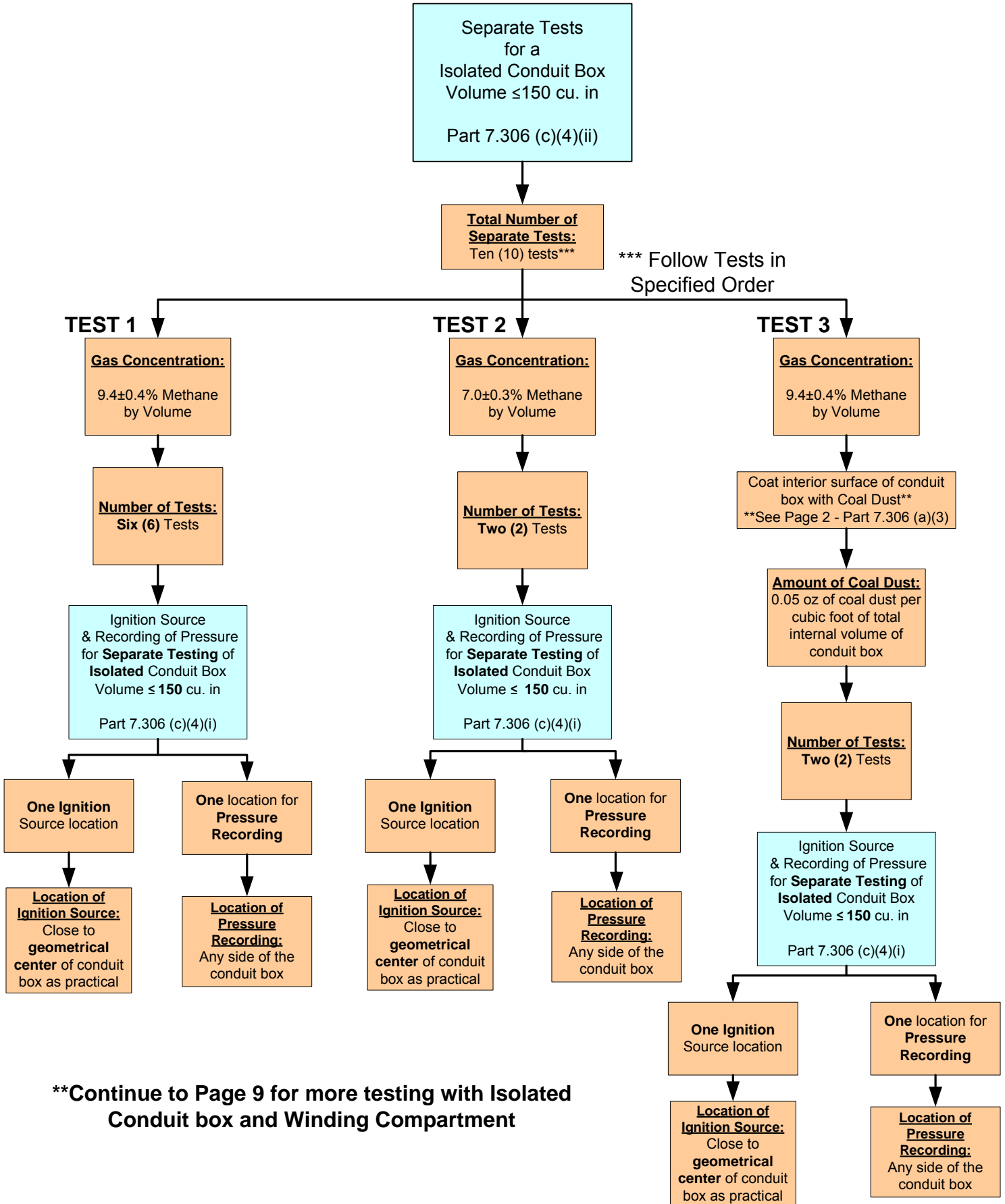


TEST PROCEDURES

ISOLATED CONDUIT BOX WITH VOLUME LESS THAN (\leq) 150 CUBIC INCHES

PAGE 8

Part 7.306 (c)(4)(ii) – Isolated conduit box must also be tested separately

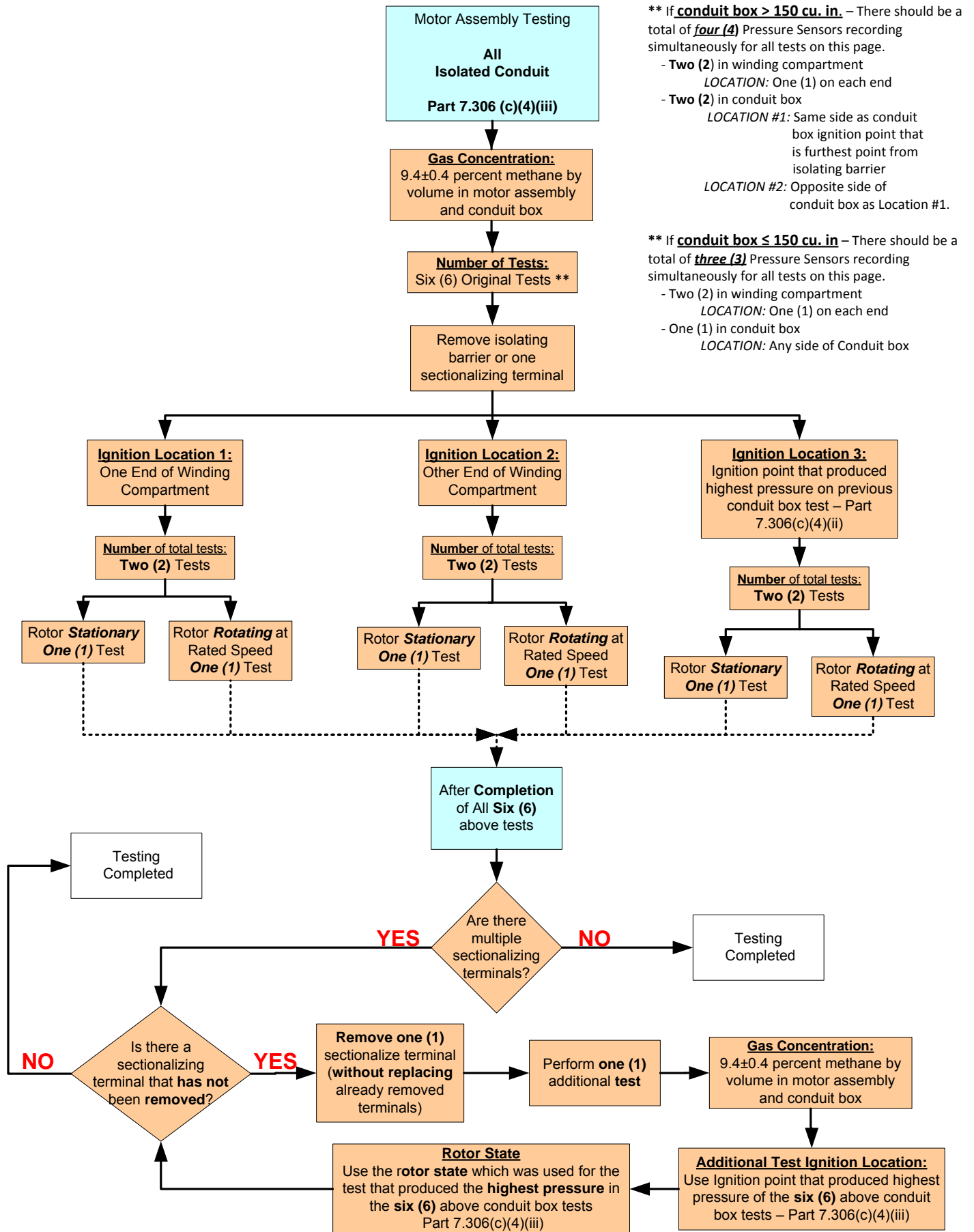


**Continue to Page 9 for more testing with Isolated Conduit box and Winding Compartment

TEST PROCEDURES

ADDITIONAL TESTS FOR ALL ISOLATED CONDUIT BOX MOTOR ASSEMBLIES

PAGE 9



**** If conduit box > 150 cu. in.** – There should be a total of **four (4)** Pressure Sensors recording simultaneously for all tests on this page.

- Two (2) in winding compartment
LOCATION: One (1) on each end
- Two (2) in conduit box
LOCATION #1: Same side as conduit box ignition point that is furthest point from isolating barrier
LOCATION #2: Opposite side of conduit box as Location #1.

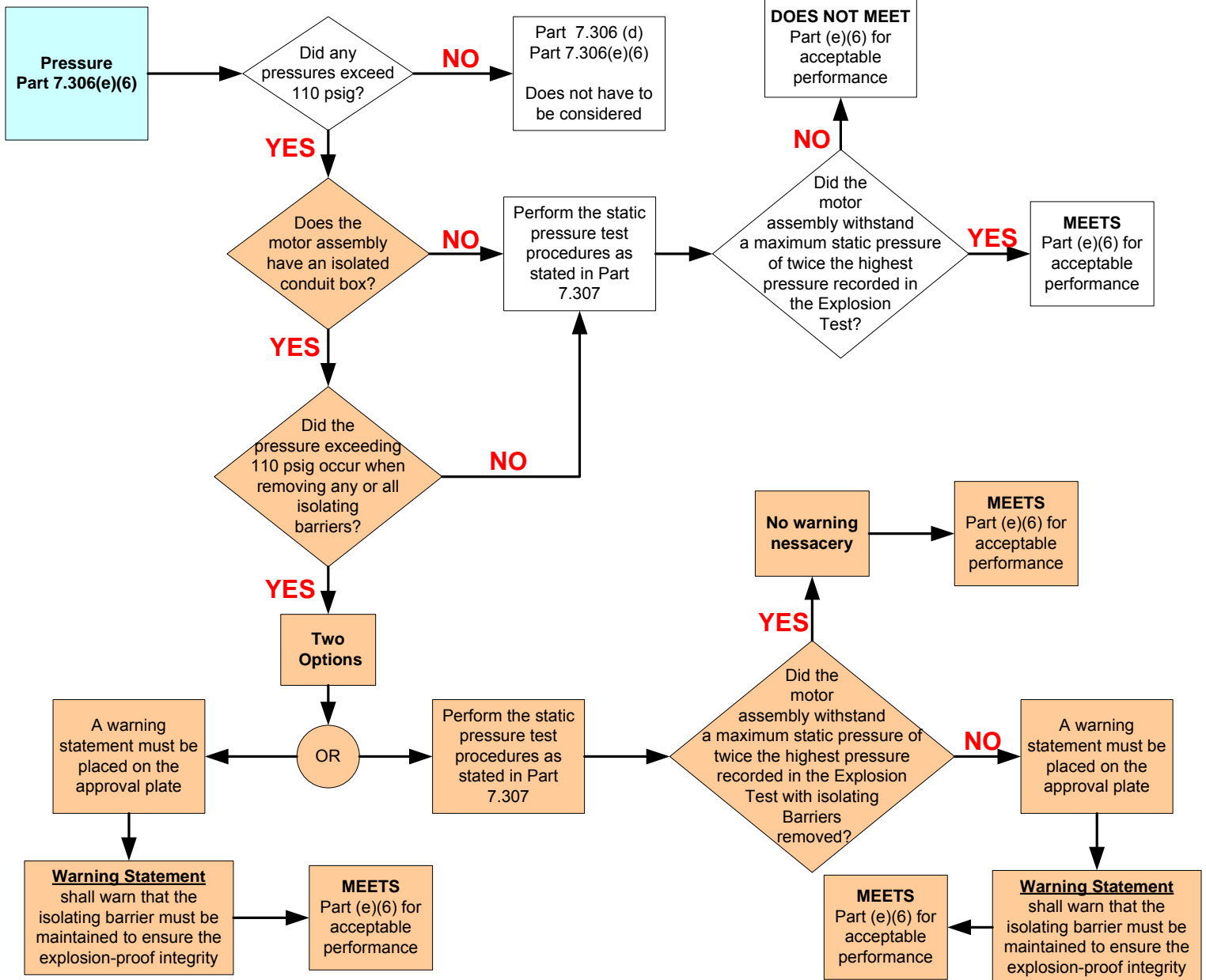
**** If conduit box ≤ 150 cu. in** – There should be a total of **three (3)** Pressure Sensors recording simultaneously for all tests on this page.

- Two (2) in winding compartment
LOCATION: One (1) on each end
- One (1) in conduit box
LOCATION: Any side of Conduit box

ACCEPTABLE PERFORMANCE

PAGE 10

Motor Assemblies that exhibits Pressure Exceeding 110 psig
Part 7.306 (d) and Part 7.306 (e)(6)



ACCEPTABLE PERFORMANCE CONTINUED

PAGE 11

