

Hybrid Electric Shuttle
Fort Bragg
Installation Transportation
Office

[www.bragg.army.mil/
directorates/logistics/ito](http://www.bragg.army.mil/directorates/logistics/ito)



**Connector
Shuttle
Express**

The shuttle-bus service is FREE. Connects with the Regional Transportation at Multi Modal Hub
NO service Federal Holidays

EARLY BIRD CONNECTOR SHUTTLE Departure MONDAY - FRIDAY						
North PX	Landmark Inn	Honeycutt Shoppette	Casablanca Housing	Mini Mall	SSC / USO	WAMC
Bldg. 8-5050	Bldg. 8-3575	Bldg. N-3905	at Honeycutt Rd. entrance	Bldg. 4-2171	Bldg. 4-2843	Bldg. 4-2817
Butner Rd. & Bragg Blvd.	Glider St.	Honeycutt Rd.	Honeycutt Rd.	Reilly Rd.	Normandy Dr.	All American
0630	0635	0640	0645	0650	0655	0700
0730	0725	0720	0715	0710	0705	0700
0730	0735	0740	0745	0750	0755	0800
0830	0825	0820	0815	0810	0805	0800
0830	0835	0840	0845	0850	0855	0900
0930	0925	0920	0915	0910	0905	0900
0930	0935	0940	0945	0950	0955	1000
1030	1025	1020	1015	1010	1005	1000

SHUTTLE Departure MONDAY - FRIDAY							
North PX	Landmark Inn	Library	Casablanca Housing	Honeycutt Shoppette	Mini Mall	SSC	WAMC
Bldg. 8-5050	Bldg. 8-3575	Bldg. 1-3346	at Honeycutt Rd. entrance	Bldg. N3905	Bldg. 4-2171	Bldg. 4-2843	Bldg. 4-2817
Butner Rd. & Bragg Blvd.	Glider St.	Randolph St.	Honeycutt Rd.	Honeycutt Rd.	Reilly Rd.	Normandy Dr.	All American
Stop 1	Stop 2	Stop 3	Stop 4	Stop 5	Stop 6	Stop 7	Stop 8
1000	1002	1005	1015	1020	1030	1035	1040
1020		1025	1035	1040	1050	1055	1100
1050		1055	1105	1110	1120	1125	1130
1110		1115	1125	1130	1140	1145	1150
1140		1145	1155	1200	1210	1215	1220
1200	1202	1205	1215	1220	1230	1235	1240
1230		1235	1245	1250	1300	1305	1310
1250		1255	1305	1310	1320	1325	1330
1320		1325	1335	1340	1350	1355	1400
1340		1345	1355	1400	1410	1415	1420
1410	1412	1415	1425	1430	1440	1445	1450
1430		1435	1445	1450	1500	1505	1510
1500		1505	1515	1520	1530	1535	1540
1520		1525	1535	1540	1550	1555	1600
1550		1555	1605	1610	1620	1625	1630
1610	1612	1615	1625	1630	1640	1645	1650
1640		1645	1655	1700	1710	1715	1720
1700		1705	1715	1720	1730	1735	1740
1730		1735	1745	1750	1800		
1750		1755	1805	1810	1820		

**EARLY BIRD CONNECTOR SHUTTLE Departure
SATURDAY AND SUNDAY**

North PX	WAMC	SSC / USO	Mini Mall	Casablanca Housing	Honeycutt Shoppette
Bldg. 8-5050	Bldg. 4-2817	Bldg. 4-2843	Bldg. 4-2171	at Honeycutt Rd. entrance	Bldg. N-3905
Butner Rd. & Bragg Blvd.	Reilly Rd.	Normandy Dr.	Reilly Rd.	Honeycutt Rd.	Honeycutt Rd.
0800	0805	0810	0815	0820	0825
◀ 0850	0845	0840	0835	0830	0825
0850	0855	0900	0905	0910	0915
◀ 0940	0935	0930	0925	0920	0915
0940	0945	0950	0955	1000	

SATURDAY SHUTTLE Departure

North PX	Landmark Inn	Library	Casablanca Housing	Honeycutt Shoppette	Mini Mall	SSC / USO	WAMC
Bldg. 8-5050	Bldg. 8-3575	Bldg. 1-3346	at Honeycutt Rd. entrance	Bldg. N-3905	Bldg. 4-2171	Bldg. 4-2843	Bldg. 4-2817
Butner Rd. & Bragg Blvd	Glider St.	Randolph St.	Honeycutt Rd.	Honeycutt Rd.	Reilly Rd.	Normandy Dr.	All American
Stop 1	Stop 2	Stop 3	Stop 4	Stop 5	Stop 6	Stop 7	Stop 8
1000	1002	1005	1015	1020	1030	1035	1040
◀ 1120		1115	1105	1100	1050	1045	1040
1120		1125	1135	1140	1150	1155	1200
◀ 1240		1235	1225	1220	1210	1205	1200
1240		1245	1255	1300	1310	1315	1320
◀ 1400	1357	1355	1345	1340	1330	1325	1320
1400		1405	1415	1420	1430	1435	1440
◀ 1520		1515	1505	1500	1450	1445	1440
1520		1525	1535	1540	1550	1555	1600
◀ 1640	1637	1635	1625	1620	1610	1605	1600
1640		1645	1655	1700	1710	1715	1720
◀ 1800		1755	1745	1740	1730	1725	1720

SUNDAY SHUTTLE Departure

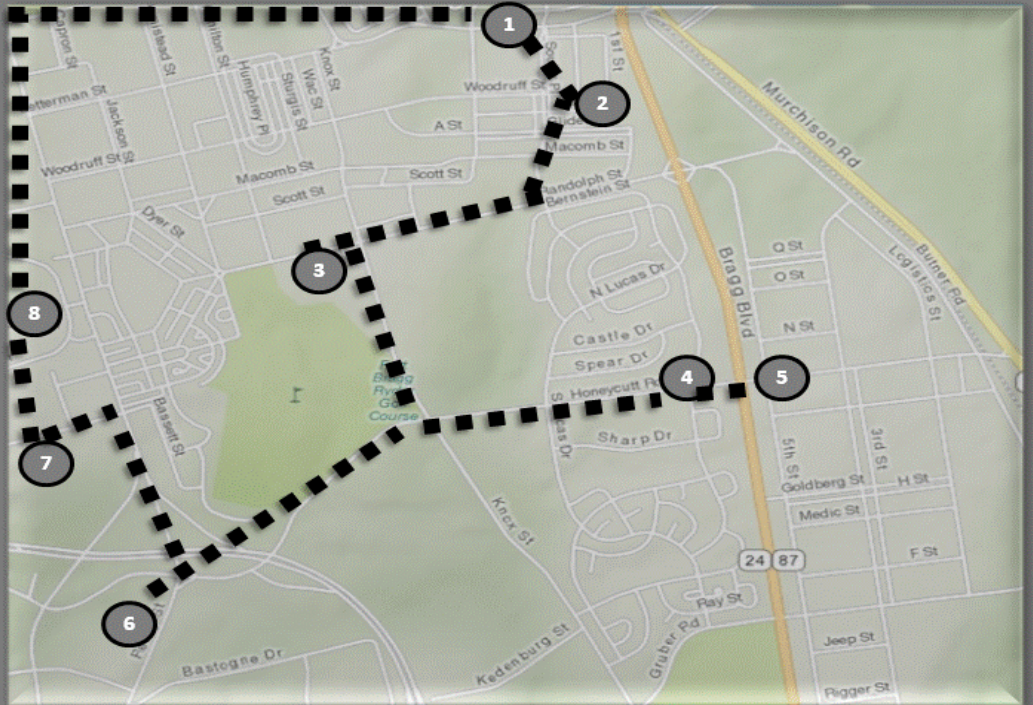
North PX	Landmark Inn	Library	Casablanca Housing	Honeycutt Shoppette	Mini Mall	SSC / USO	WAMC
Bldg. 8-5050	Bldg. 8-3575	Bldg. 1-3346	at Honeycutt Rd. entrance	Bldg. N-3905	Bldg. 4-2171	Bldg. 4-2843	Bldg. 4-2817
Butner Rd. & Bragg Blvd.	Glider St.	Randolph St.	Honeycutt Rd.	Honeycutt Rd.	Reilly Rd.	Normandy Dr.	All American
Stop 1	Stop 2	Stop 3	Stop 4	Stop 5	Stop 6	Stop 7	Stop 8
1000	1002	1005	1015	1020	1030	1035	1040
◀ 1120		1115	1105	1100	1050	1045	1040
1120		1125	1135	1140	1150	1155	1200
◀ 1240		1235	1225	1220	1210	1205	1200
1240		1245	1255	1300	1310	1315	1320
◀ 1400	1357	1355	1345	1340	1330	1325	1320

Gray Route (Connector)

NO SERVICE ON FEDERAL HOLIDAYS

Early Bird (M-F): 0630 - 1030
 Monday - Friday: 1000 - 1830
 Early Bird (Weekend): 0800 - 1000
 Saturday: 1000 - 1720
 Sunday: 1000 - 1320

Stop 1	North PX	
★		
Stop 2	Landmark Inn	
★★		
Stop 3	Library	
★		
Stop 4	Bouganville/ Casablanca Housing	
No Transfer		
Stop 5	Honeycutt Shoppette	
★		
Stop 6	Mini Mall	
★ ★ ★		
Stop 7	Soldier Support Center/USO	
★ ★ ★ ★		
Stop 8	Womack Army Med. Center All-American entrance	
★ ★ ★ ★		



Stop # for route	Transfer Point (indicated by color)	Dining	Dining Facility
------------------	-------------------------------------	--------	-----------------