

# HMT-West 2010 Season Overview

- Observations
- Weather Summary

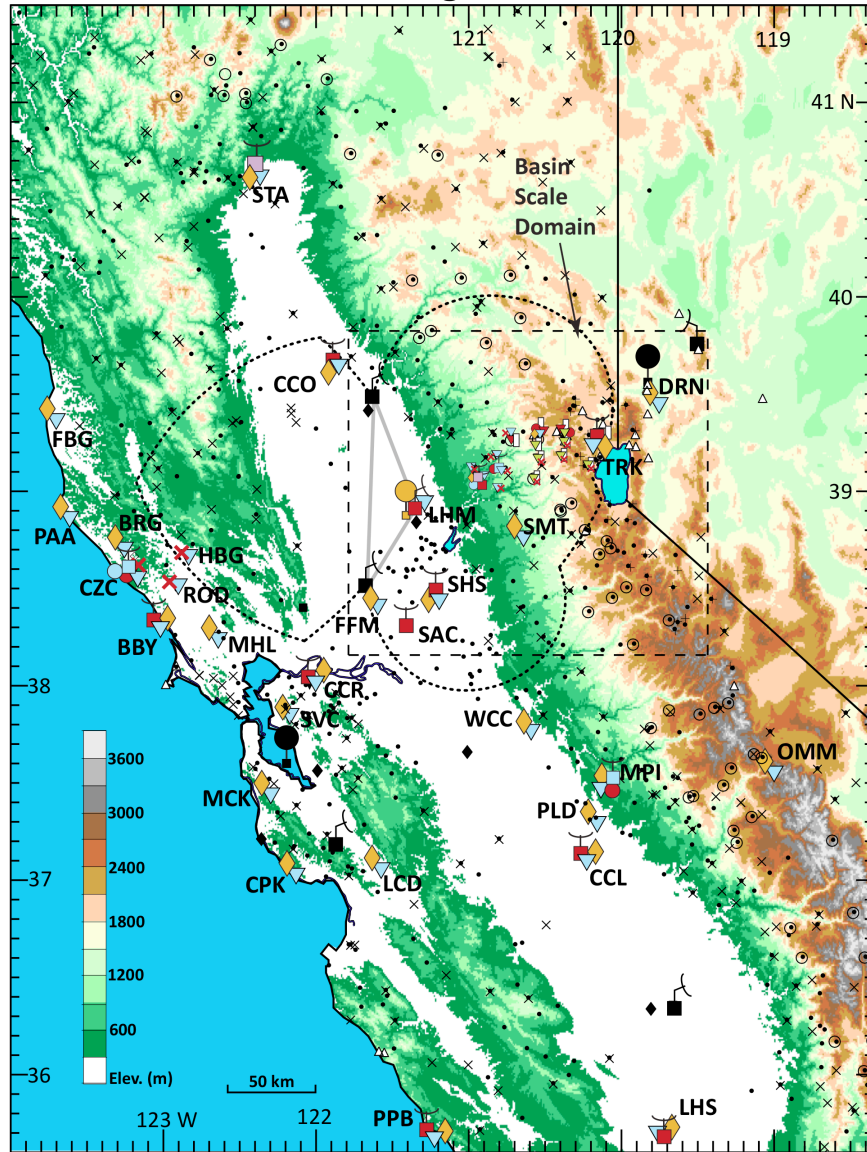
NAME	STATE	ID	SNR	Winds	Snow Level	Upslope Flux	Virtual Temp	Virtual Theta	Surface Met
Alta	CA	ata							●
Big Bend	CA	bbd							●
Black Oak	AZ	boc							●
Blue Canyon	CA	blu							●
Bodega Bay	CA	bby	●	●	●	●	●	●	●
Boulder	CO	skg							●
Burnt Ridge (P188)	CA	brg							●
Canada Hill	CA	cnh							●
Canelo	AZ	cnl							●
Cazadero	CA	czc	●		●				●
Chico	CA	cco	●	●	●	●	●	●	●
Chowchilla	CA	cci	●	●	●	●	●	●	●
Colfax	CA	cfc	●	●	●	●			●
Colfax (FMCW)	CA	cff	●		●				●
Colfax	CA	ctf							●
Concord	CA	ccr	●	●	●	●			●
Cooke Peak (P534)	CA	cpk							●
DRI Reno (P090)	NV	drn							●
Elgin	AZ	elg							●
Estes Park	CO	epk	●	●	●				●
Finch Farms (P268)	CA	ffm							●
Foresthill	CA	fhi							●
Fort Bragg	CA	fbg							●
Freeman Springs	AZ	fms							●
Granby	CO	gnb							●
Greek Store	CA	gks							●
Healdsburg	CA	hbg							●
Huysink	CA	hys							●
Lacrosse Drive (P217)	CA	lcd							●
Lee Vining	CA	lvn							●
Livermore	CA	lvr	●	●	●		●		●
Lost Hills	CA	lhs	●	●	●	●	●	●	●
Mariposa	CA	mpi	●		●				●
MeachumLfl (P196)	CA	mhl							●
Mills Creek (P176)	CA	mck							●
Norden	CA	ndn							●
Old Mammoth (P630)	CA	omm							●
Onion Creek	CA	ocr							●
Point Arena (P059)	CA	pan							●
Pt. Piedras Blancas	CA	ppb	●	●	●	●	●	●	●
Ravensdale	WA	rvd	●		●				●
Rio Nido	CA	rod							●
Sacramento	CA	sac	●	●	●		●		●
Seattle	WA	sea	●	●		●	●		●
Shasta Dam	CA	std	●		●				●
Sibley Volcano (P224)	CA	svc							●
Slate Mountain (P140)	CA	smt							●
Sloughhouse	CA	shs	●	●	●	●			●
Spanaway	WA	swy	●	●	●	●			●
Sugar Pine	CA	spd	●		●				●
Talbot	CA	tbt							●
Truckee	CA	trk	●	●	●	●			●
Tucson	AZ	pap	●	●					●
Visalia	CA	vis	●	●	●		●		●
Wild Creek (P306)	CA	wcc							●
Ward Creek	CA	wdc							●
Westport (3GHz)	WA	wpc	●		●				●
Westport	WA	wpt	●	●	●	●			●
Whetstone	AZ	wse							●

● = data received in the last three hours  
 ● = no data received in the last three hours  
 ● = no data received in the last twelve hours

PSD currently supports 59 instrument sites, most are in CA

<http://www.esrl.noaa.gov/psd/data/obs/>

# HMT-WEST 2010: Regional Scale Domain



## HMT Observing Systems

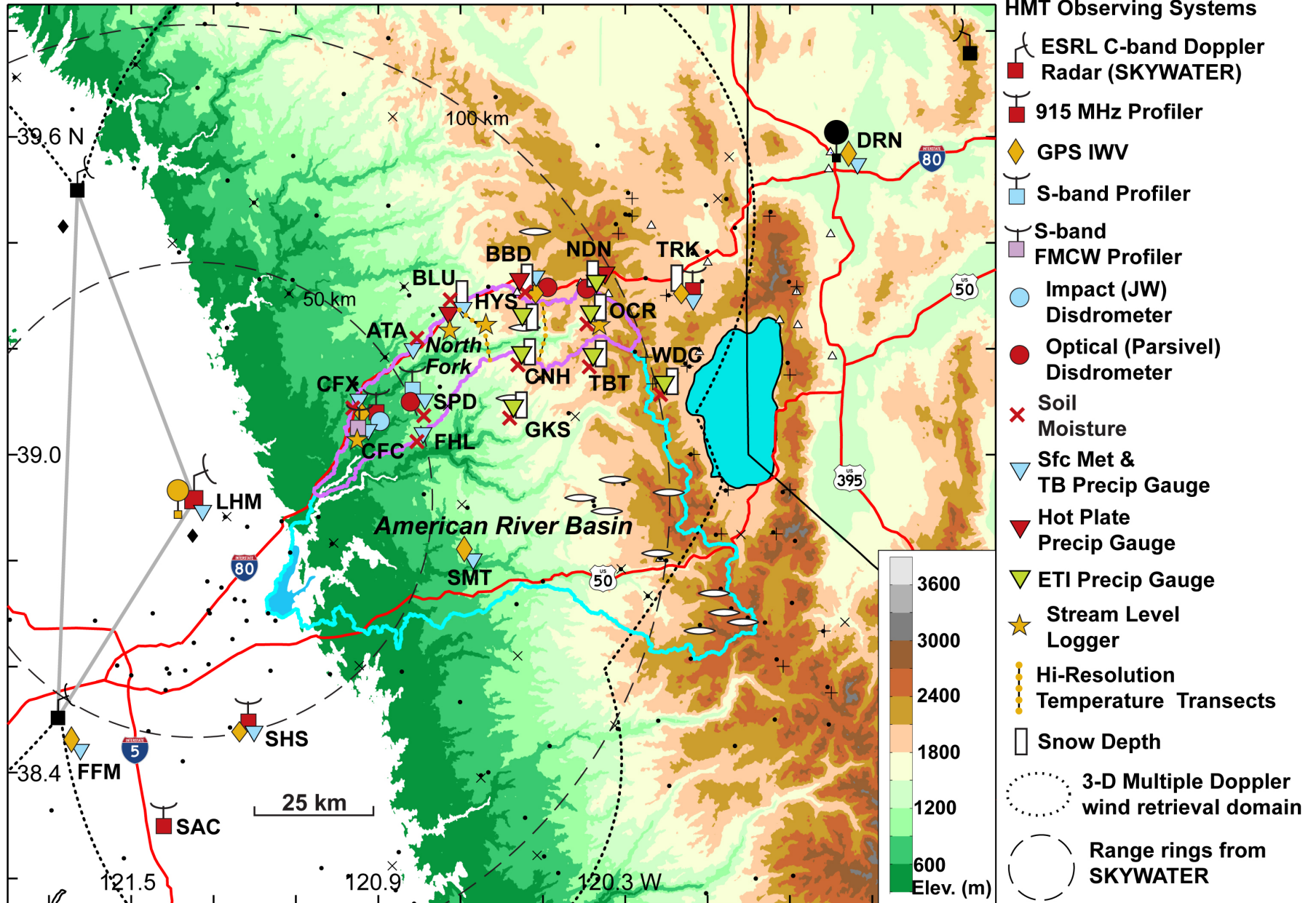
- ESRL C-band
- Doppler Radar
- 915 MHz Profiler
- GPS IWV
- S-band Profiler
- S-band FMCW Profiler
- Impact (JW) Disdrometer
- Optical (Parsivel) Disdrometer
- Soil Moisture
- Sfc Met & TB Precip Gauge
- Hot Plate Precip Gauge
- ETI Precip Gauge
- Snow Depth
- 3-D Wind Retrieval Domain

- BBY Bodega Bay
- BRG Burnt Ridge
- CCL Chowchilla
- CCO Chico
- CCR Concord
- CPK Cooke Peak
- CZC Cazadero
- DRN DRI Reno
- FBG Fort Bragg
- FFM Finch Farms
- HBG Healdsburg
- LCD Lacrosse Drive
- LHM Lincoln
- LHS Lost Hills
- MCK Mills Creek
- MHL MeachumLfl
- MPI Mariposa
- OMM Old Mammoth
- PAA Point Arena
- PLD Planada
- PPB Point Piedras Blancas
- ROD Rio Nido
- SAC Sacramento
- SHS Sloughhouse
- SMT Slate Mountain
- STA Shata
- SVC Sibley Volcano
- TRK Truckee
- WCC Wild Creek

## Operational & Long-Term Observing Systems

- NWS WSR-88D
- NWS Rawinsonde
- GPS-Met IWV
- WRCC Surface Network
- ALERT Precip. Gauge
- ALERT Snow Pillow
- RAWS Precip. Gauge
- SNOTEL Precip. Gauge and Snow Pillow

# HMT-WEST 2010: Basin Scale Domain



**Operational and Long Term Observing Systems**

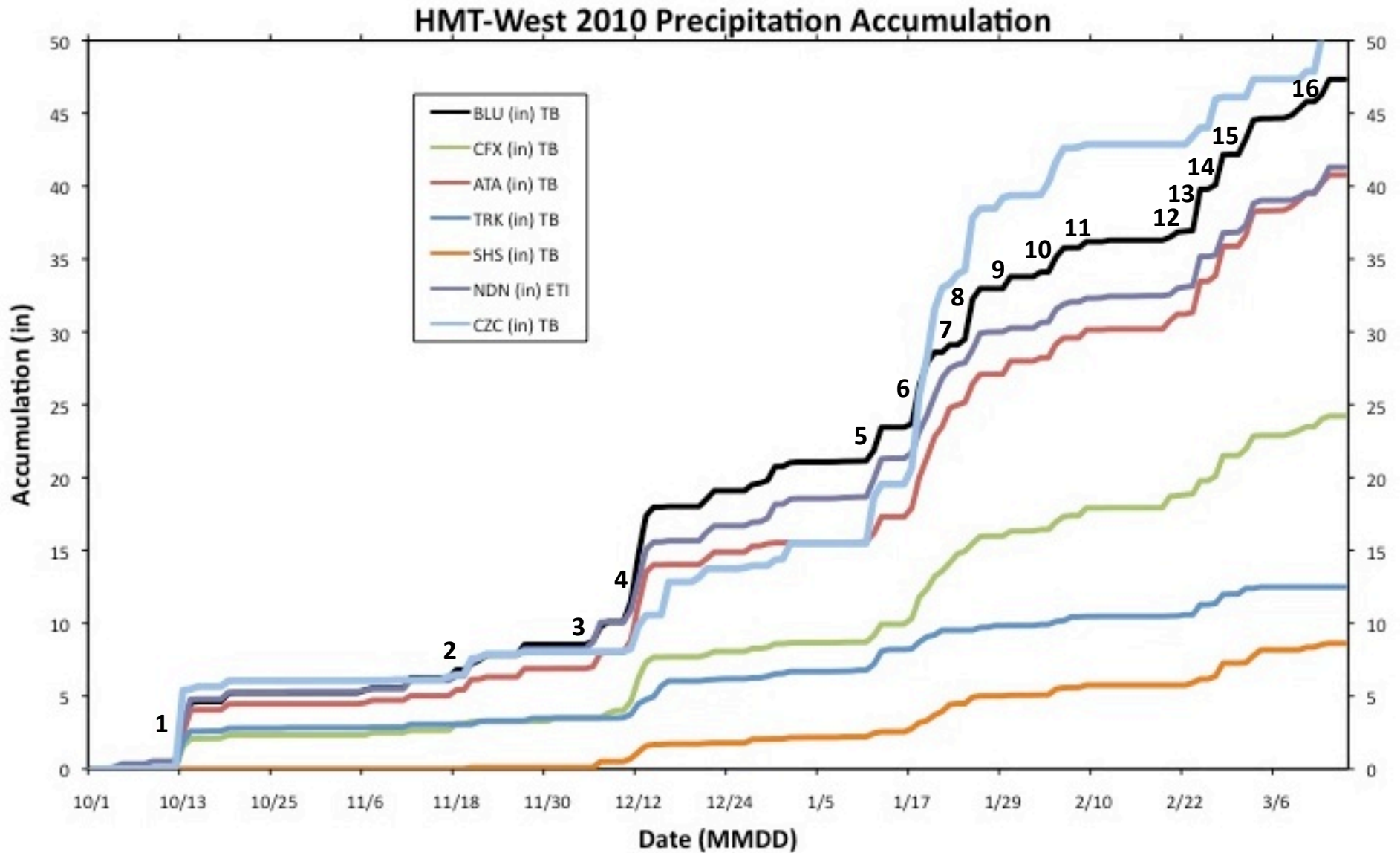
- NWS WSR-88D
- NWS Rawinsonde
- ALERT Precip. Gauge
- ALERT Snow Pillow
- + SNOTEL Precip. Gauge and Snow Pillow
- × RAWS Precip. Gauge
- △ WRCC Surface Network
- ◆ GPS-Met IWV

# Instrumentation Issues

- Network performed well overall
- Talbot (TBT) tipping bucket stopped working and was removed in early February
- Big Bend (BBD) tipping bucket down from mid December-mid January due to heater problem
- Cazadero (CZC) and Bodega Bay (BBY) were both down in mid-late February due to phone/communication issues
- Truckee (TRK)
  - Data logger battery problem in January
  - Tipping bucket gauge replacement in March



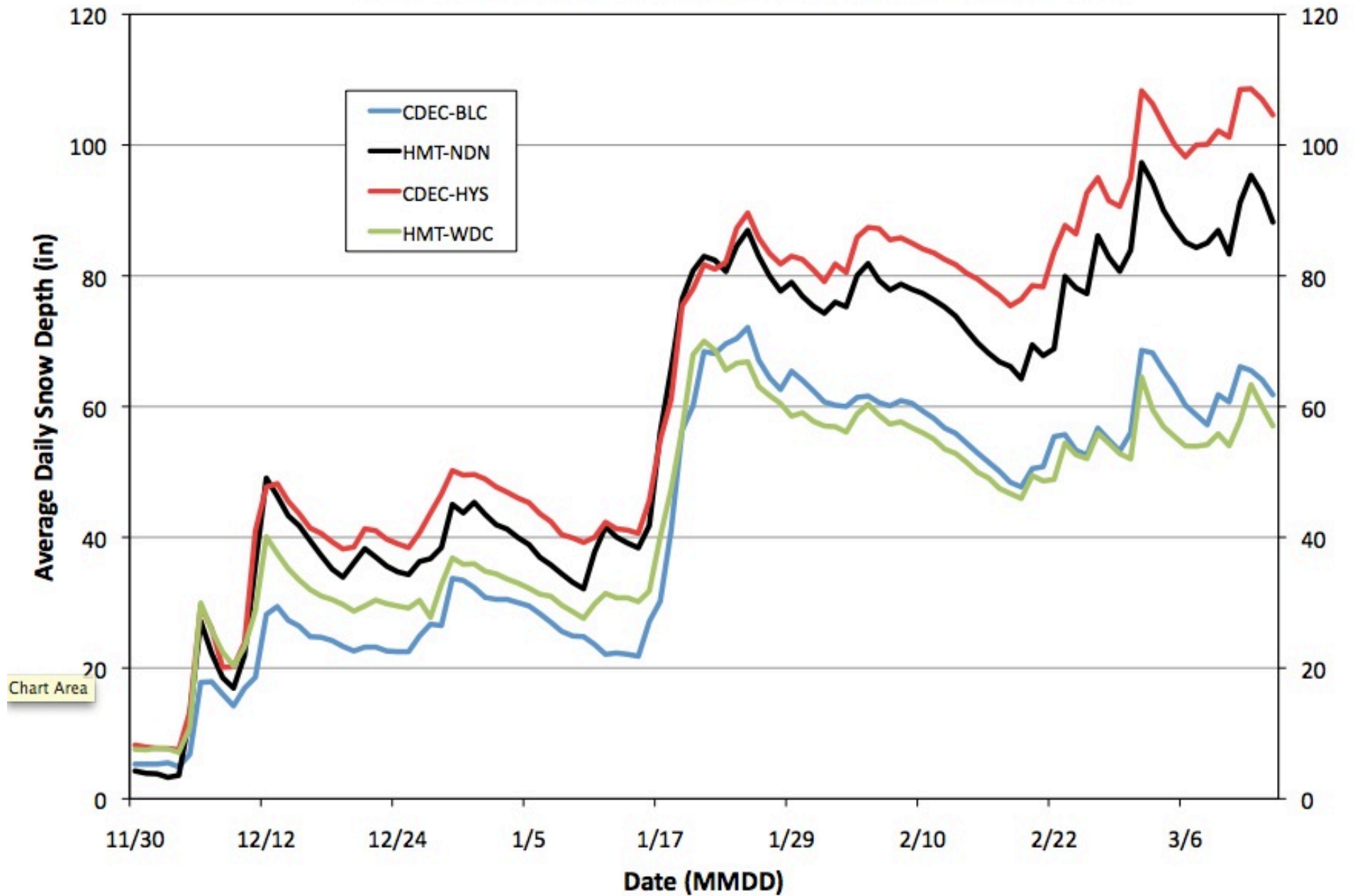
# 16 Precipitation Events: 1 Oct 2009 – 15 Mar 2010



# Three “big” events

Start	End	Dur. (hrs)	SHS TB (in)	CFX TB (in)	ATA TB (in)	BLU TB (in)	NDN ETI (in)	TRK TB (in)
17 Jan 21Z	21 Jan 12Z	87	1.25	3.54	6.11	5.84	5.32	1.30
11 Dec 08Z	14 Dec 14Z	78	1.17	3.67	6.01	7.88	5.49	1.44
13 Oct 12Z	14 Oct 20Z	32	NA	2.05	4.02	4.51	4.25	2.56

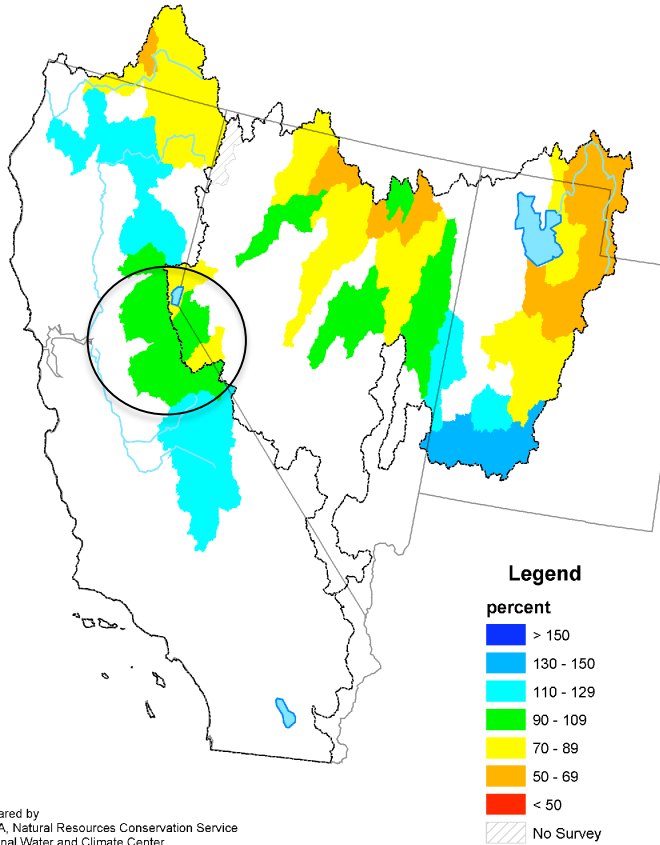
## HMT-West 2010 Average Snow Depth Comparison





# Precipitation in the ARB was near normal

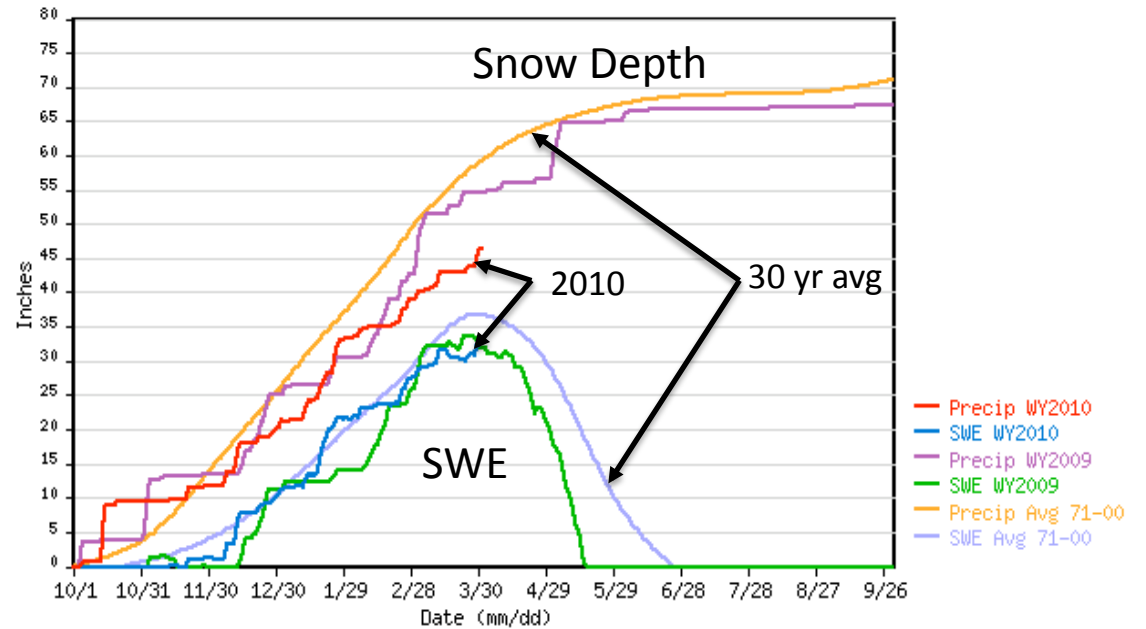
## Mountain Snowpack in the Great Basin and Major Water Supply Basins in California as of March 1, 2010



Prepared by  
 USDA, Natural Resources Conservation Service  
 National Water and Climate Center  
 Portland, Oregon  
<http://www.wcc.nrcs.usda.gov>

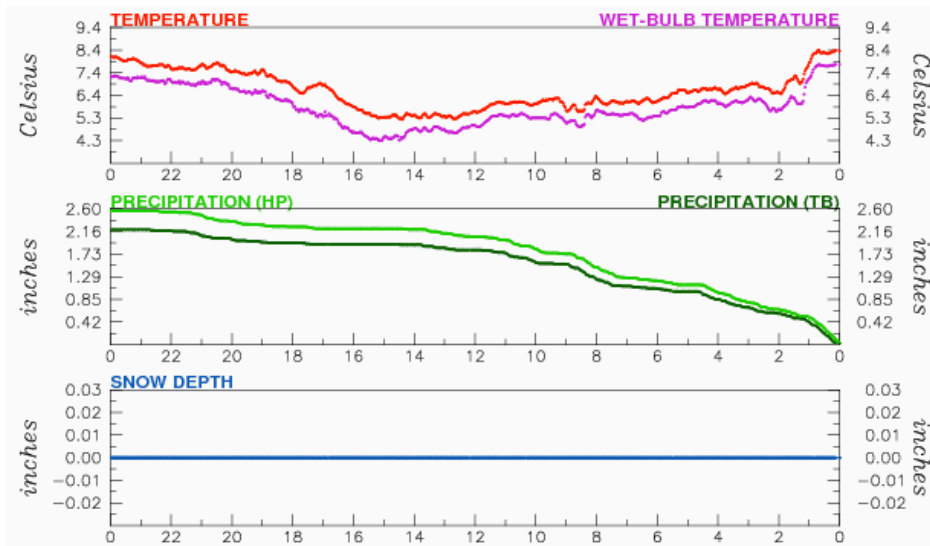
WARD CREEK #3 SNOTEL as of 03/31/2010

\*\*\* Provisional Data, Subject to Change \*\*\*

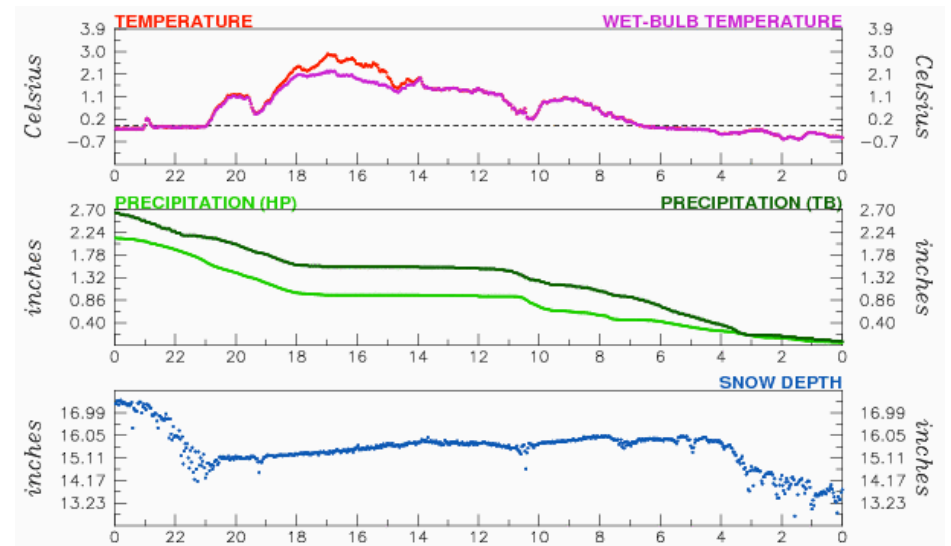


Images courtesy of NRCS

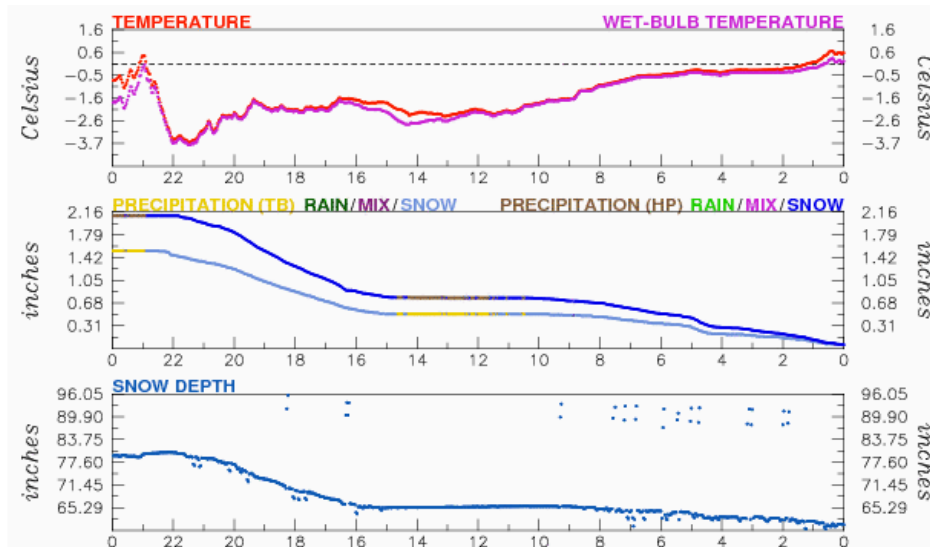
### Big Bend (BBD) 14 October: Rain Event



### Blue Canyon 18 January: Transition Event



### Big Bend (BBD) 3 March: Snow Event



### Norden (NDN) 3 March: Snow Event

