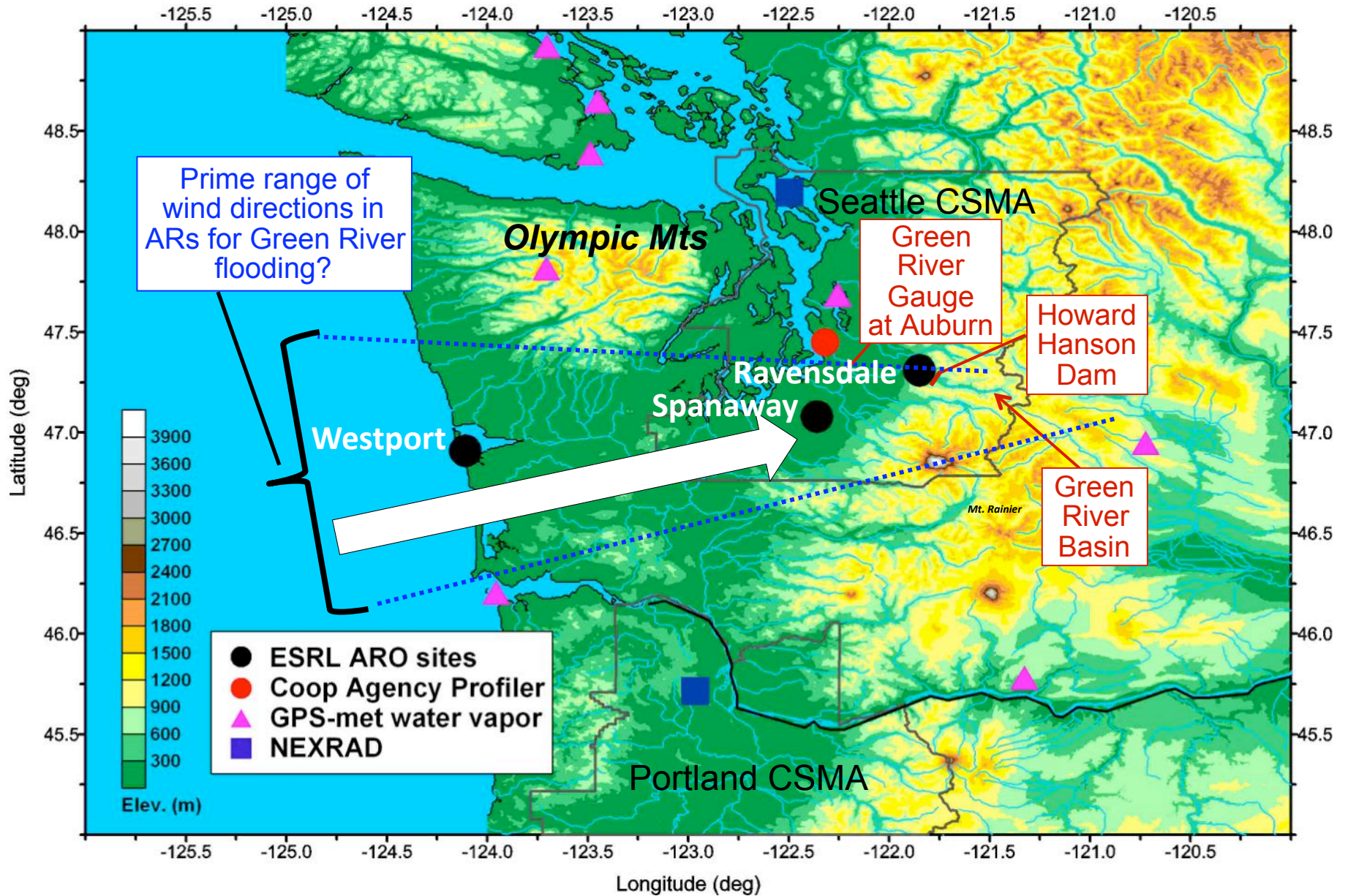
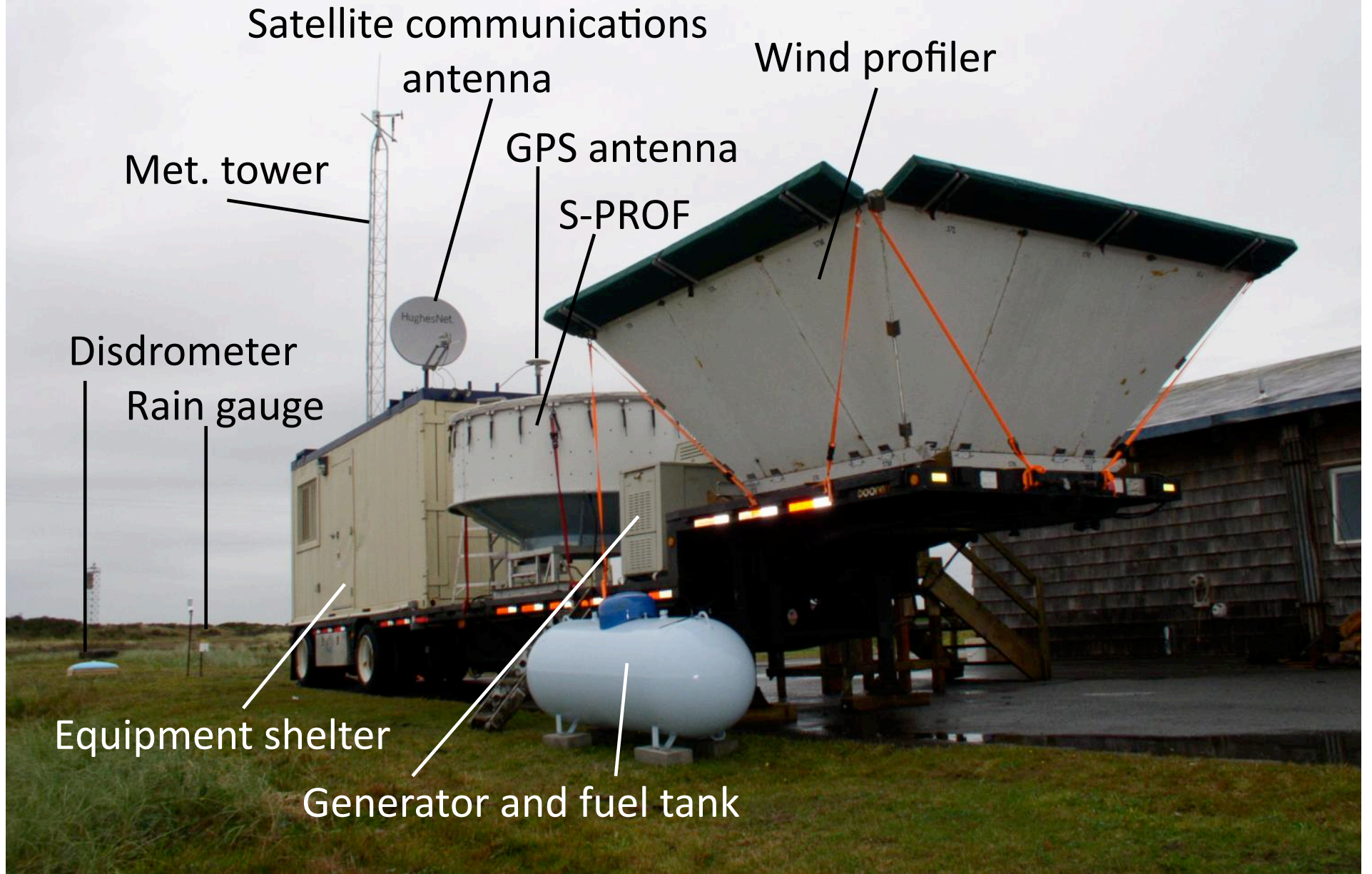


# NOAA/ESRL Howard Hanson Dam Atmospheric River Observatory (ARO) Deployments 2009-10



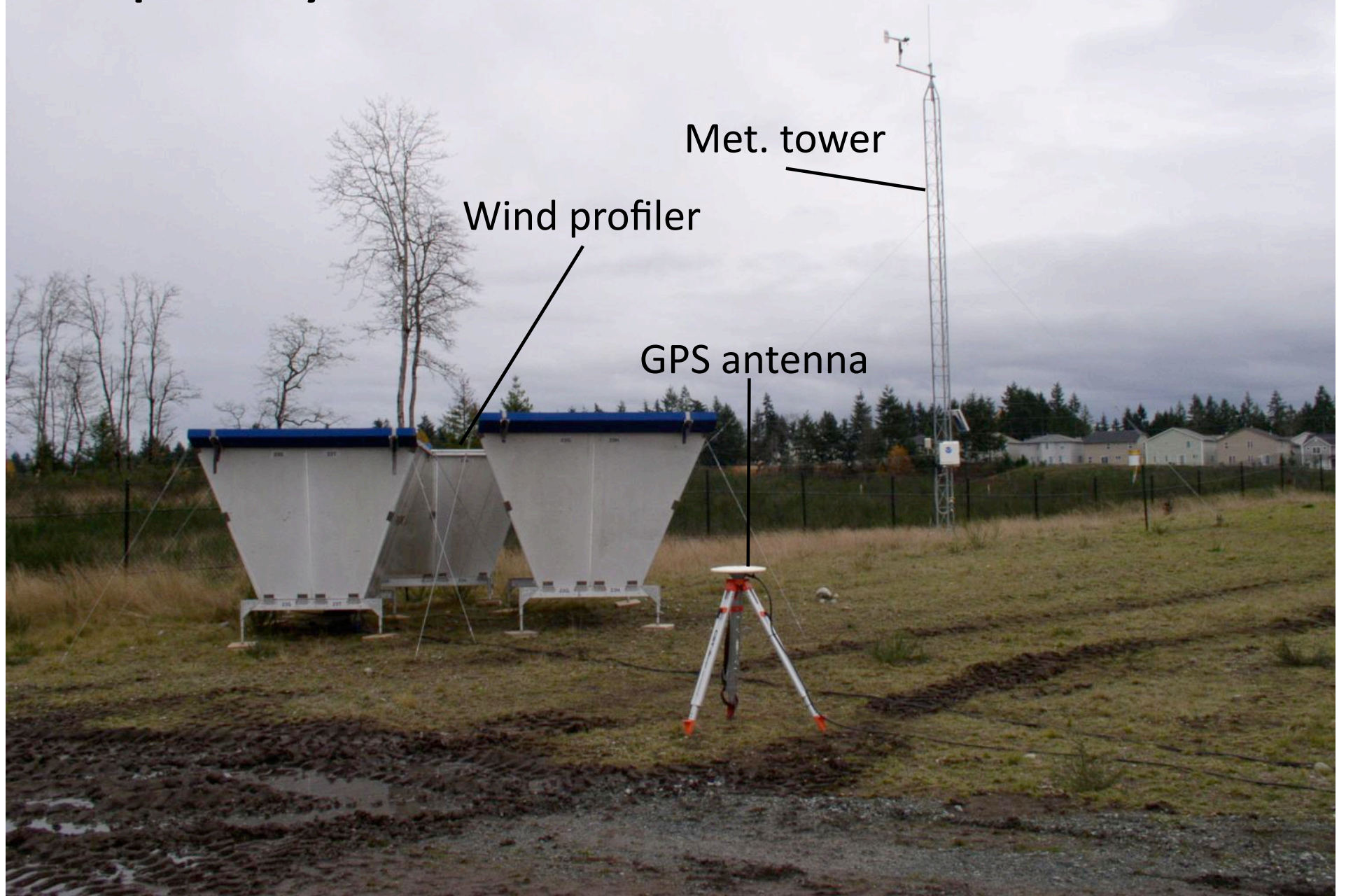


# Westport Mobile Atmospheric River Observatory





# Spanaway



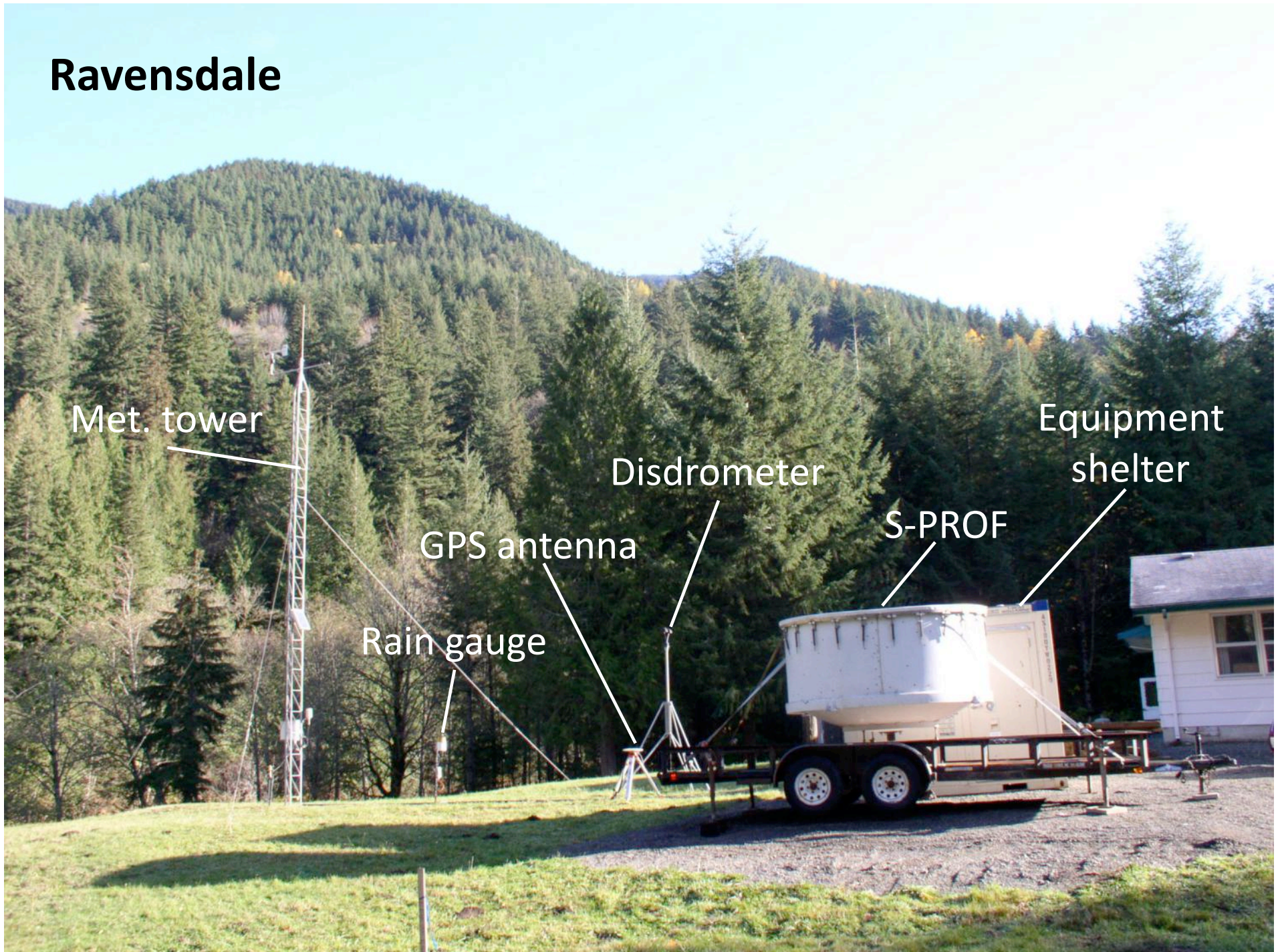
Met. tower

Wind profiler

GPS antenna



# Ravensdale



Met. tower

Disdrometer

Equipment shelter

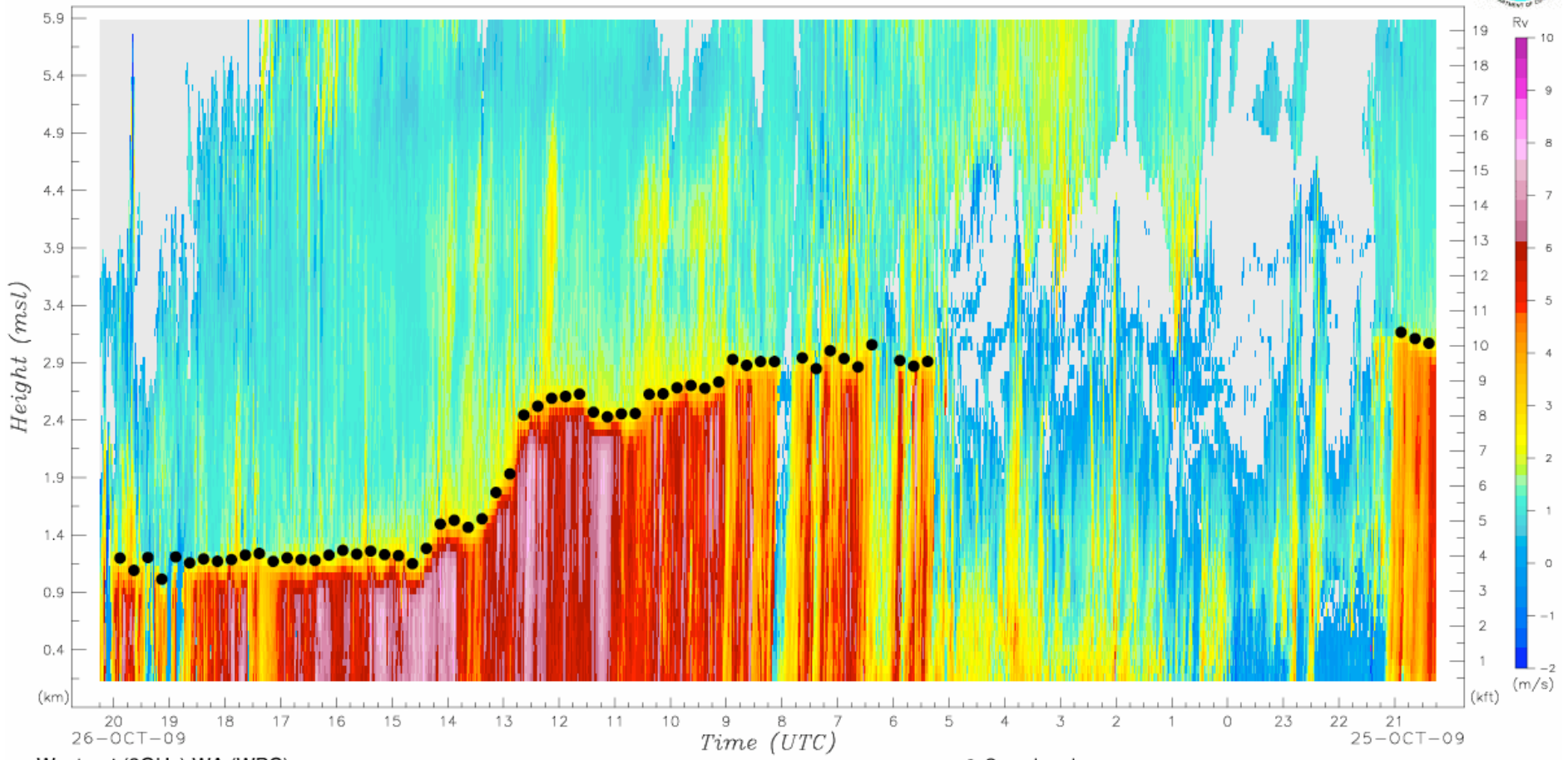
GPS antenna

S-PROF

Rain gauge

MARMS S-band Precipitation Profiling Radar (S-PROF) real-time display with observed Doppler vertical velocity profiles (Rv scale to the right; positive downward) and rain/snow transition altitude (black dots). Note the dramatic decrease in this altitude accompanying passage of a cold front between 12:00 and 13:00 UTC.

ESRL Physical Sciences Division  
Precipitation Profiling Radar



Westport (3GHz), WA (WPC)  
46.91 N, 124.11 W, 5 m

● Snow Level