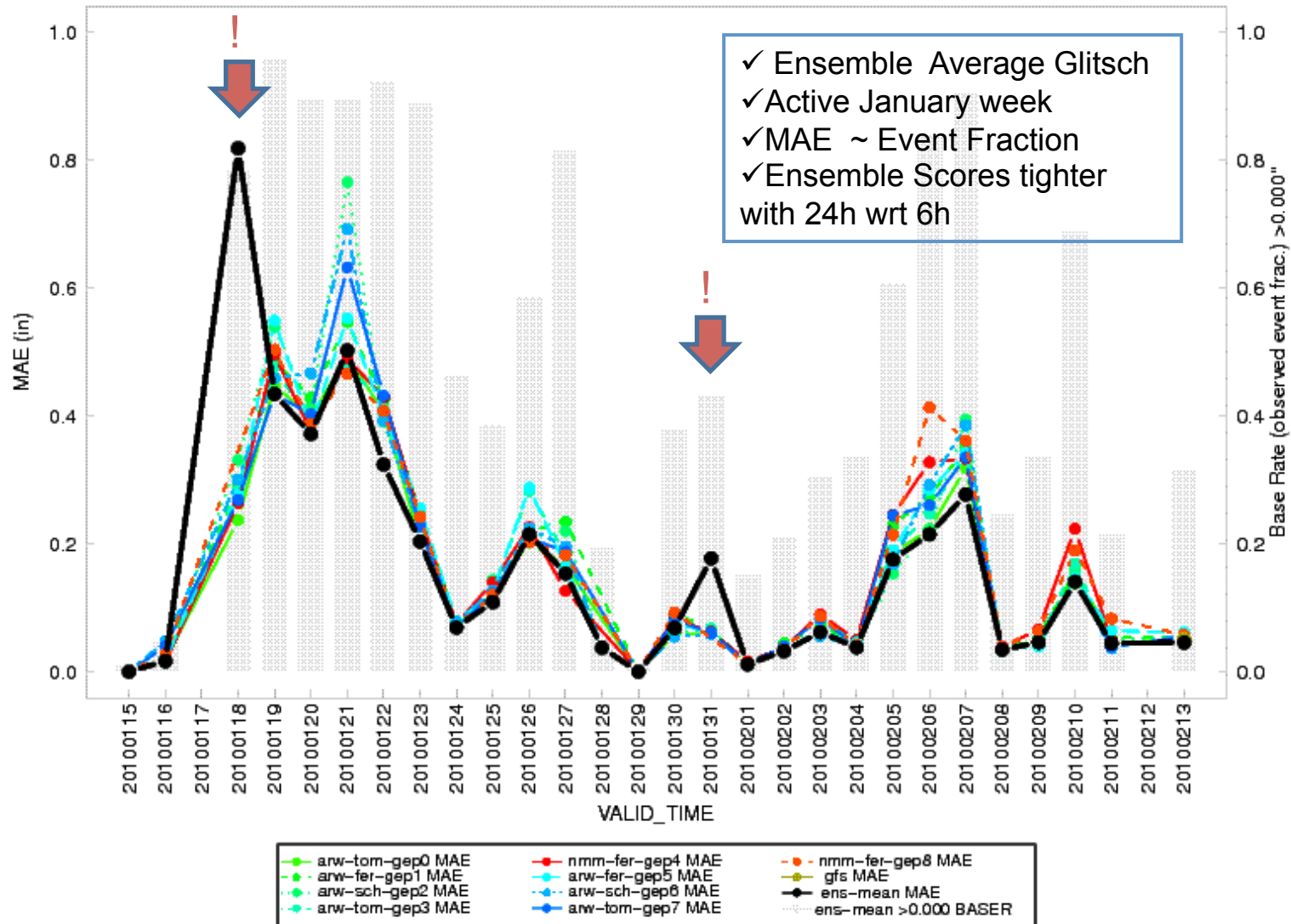
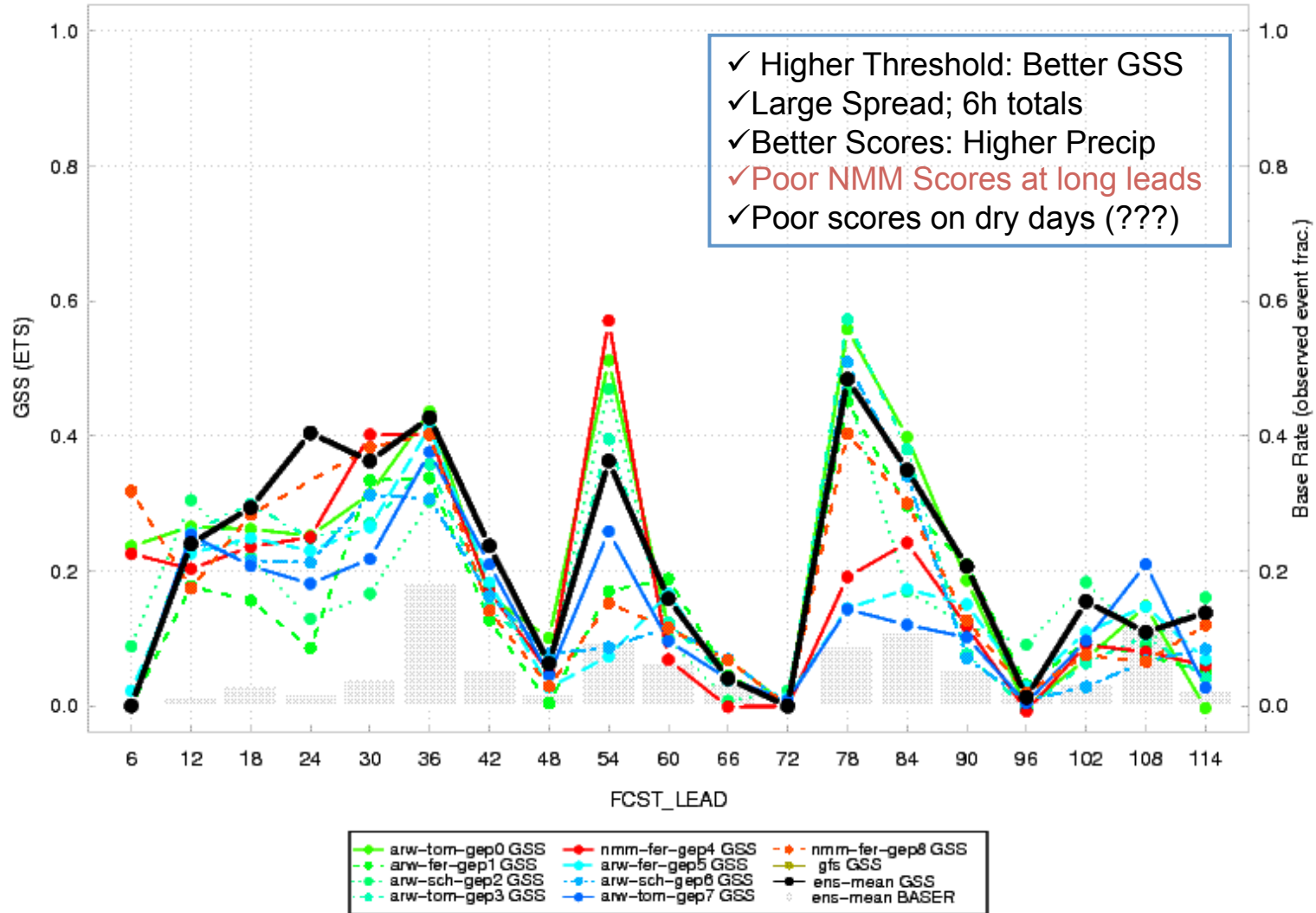


DAILY PERFORMANCE for APCP_24 MAE
24hr FCST – Region: FULL – Obs: Gauge data

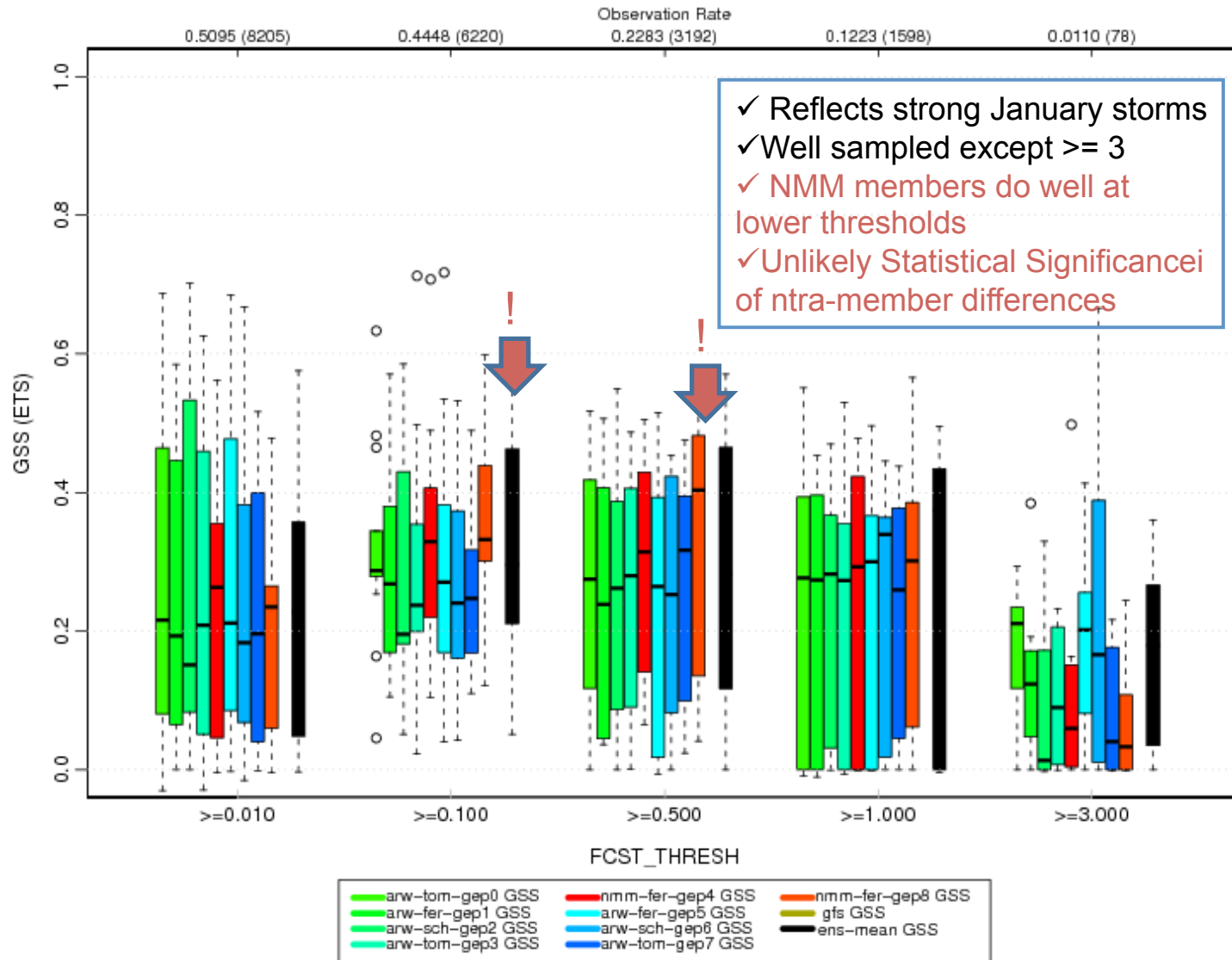


RUN PERFORMANCE for APCP_06 ≥ 0.500 " GSS
CONSTANT INIT TIME 2010011712 – Region: FULL Obs: Stage IV



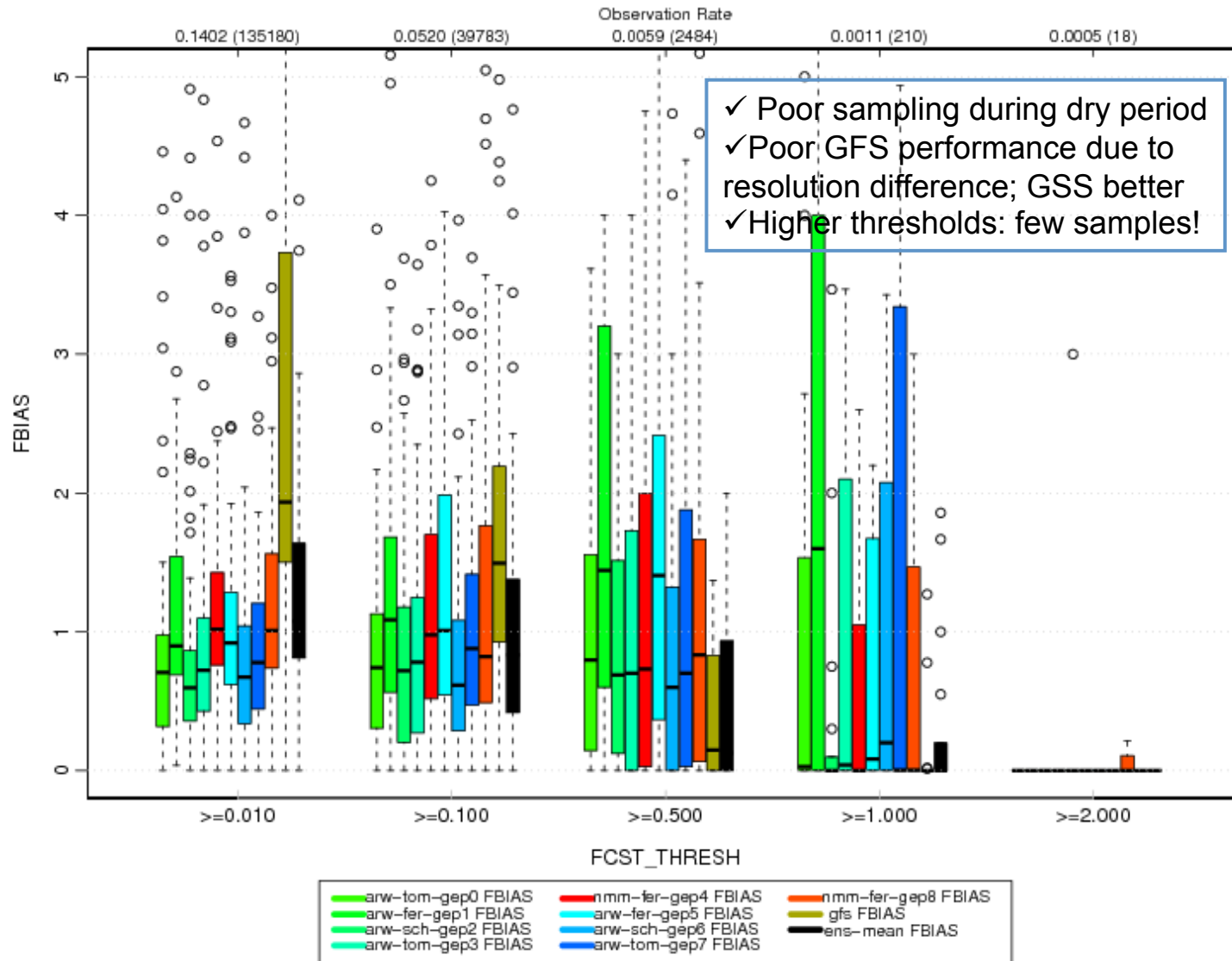
30 DAY AGGREGATE for APCP_24 F24 GSS
 OVER THRESHOLD – Region: FULL Obs: Gauge data

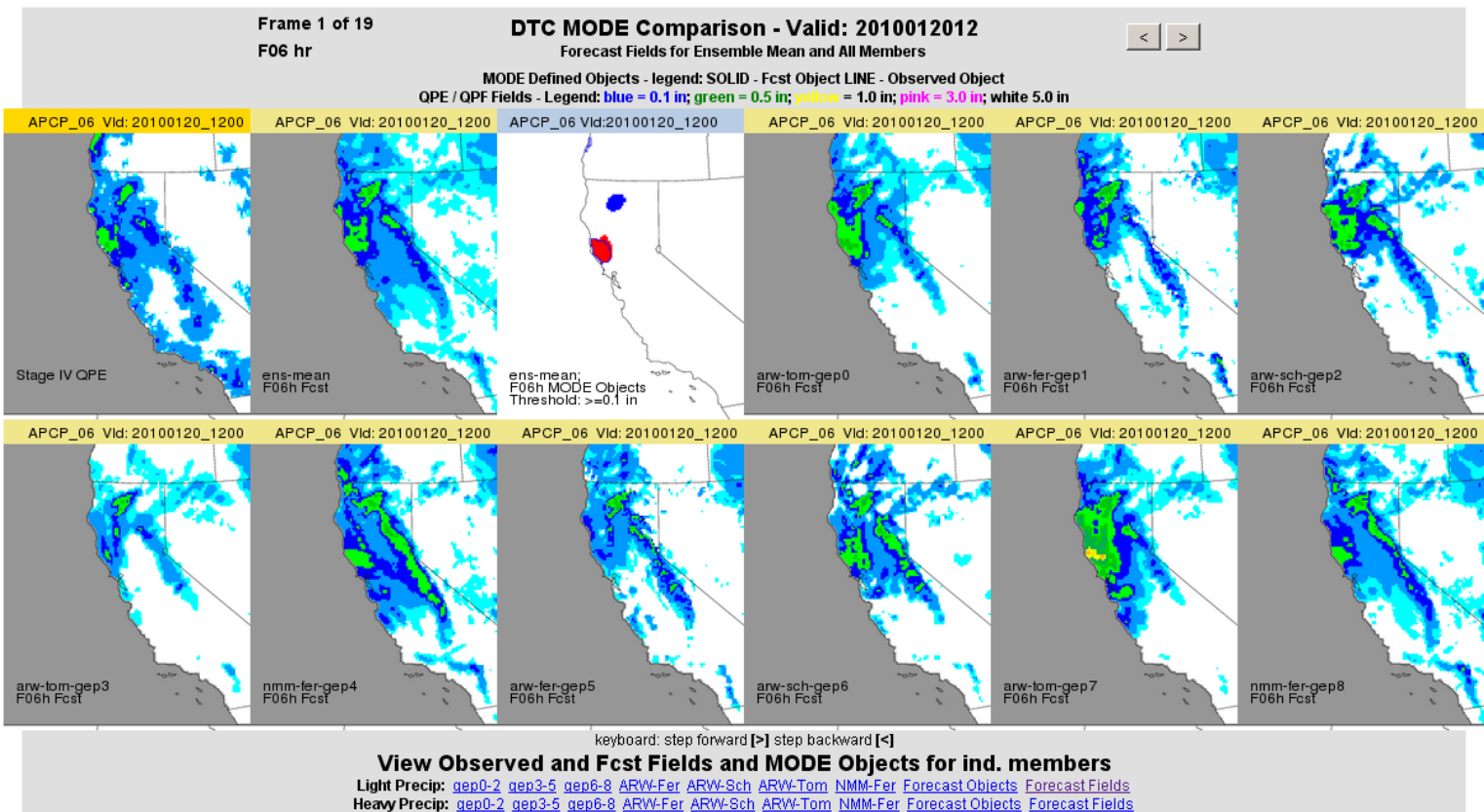
January 2010



30 DAY AGGREGATE for APCP_06 F06 FBIAS
 OVER THRESHOLD – Region: FULL Obs: Stage IV data

February 2010

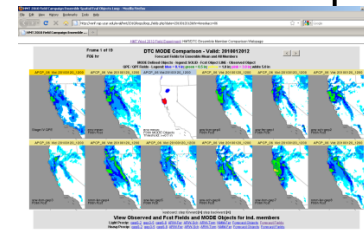




HMT/DTC Model Assessment – 2009-2010 Winter Exercise Future Work and Plans for 2010-2011 HMT-West

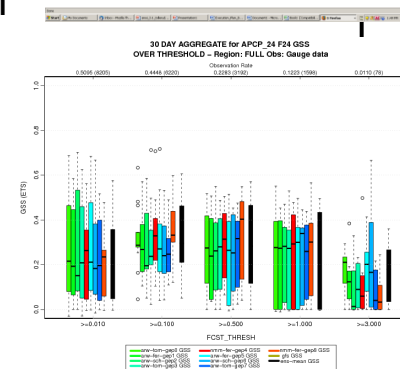
Demonstration Website Development

- Probabilistic Scoring Options for PQPF
- Fully Interactive GUI for Score Displays
- Option for Scenario-specific (i.e., Storm) Verification



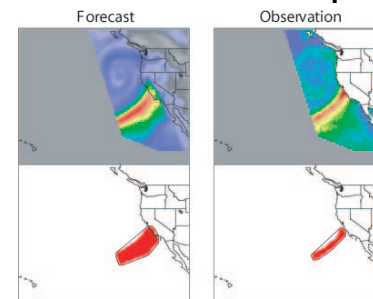
Further Research and Case Studies

- Verification Score Choices; the Best and Worst
- Object-based Vx; Complementing Standard Vx
- Data Impact: Gages vs. Grids



Questions that Need Answers

- Optimal Regional Verification Strategies
- Verifying Multiple Domains: the AR problem
- Inter-Model Resolution Compatibility: GFS vs. WRF



Send answers to Edward.Tollerud@noaa.gov or jensen@ucar.edu