

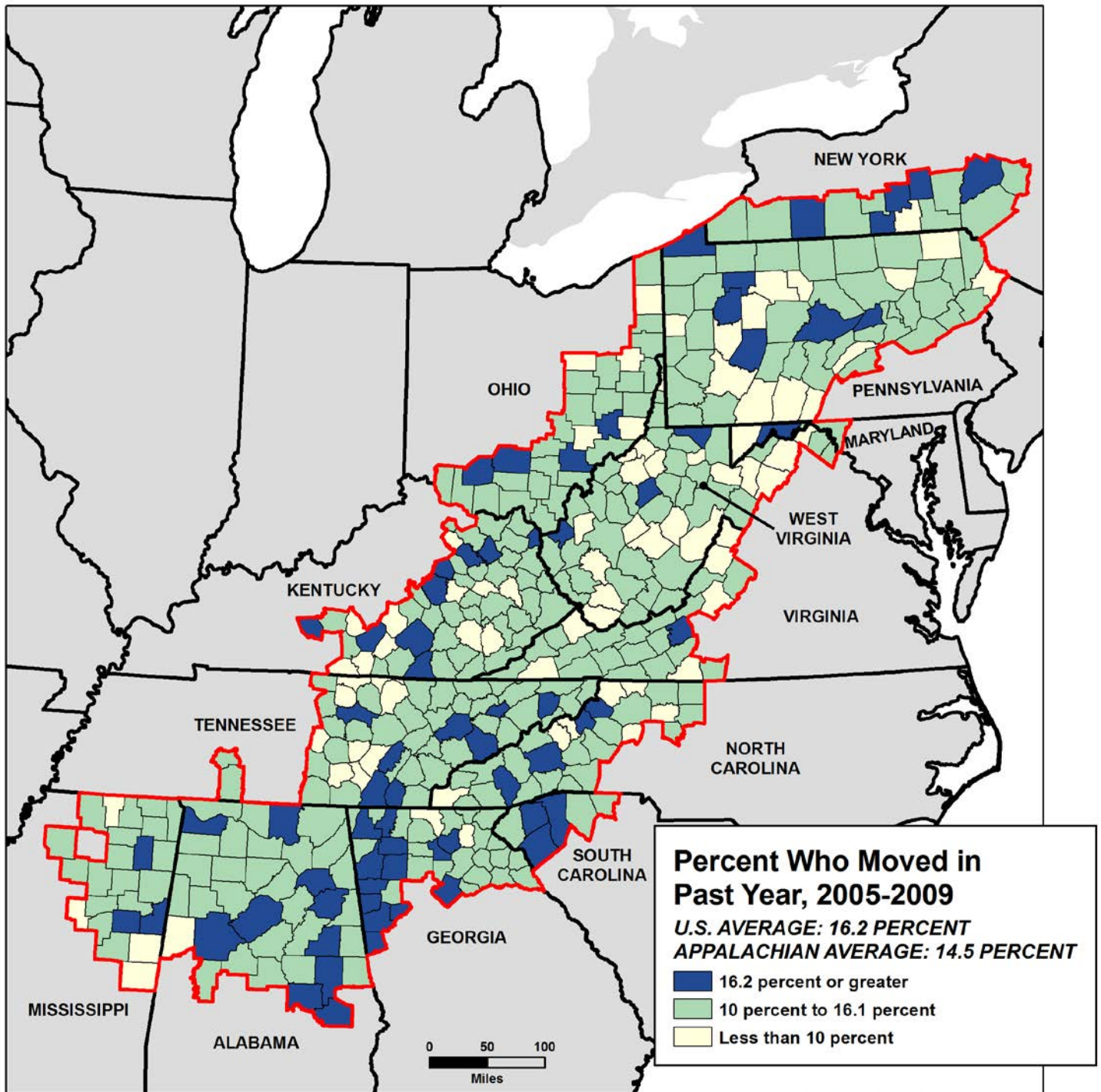
## CHAPTER 6: MIGRATION

**Table 6.1: Mobility Status of Persons Ages 1 and Over in the Appalachian Region, 2005-2009**

Mobility Status in the Last Year	Total Population Ages 1 and Over, 2005-2009	Percent of Population Ages 1 and Over					
		Did Not Move in Past Year	Moved from a Different Residence in the Past Year				
			Within the County	Outside the County			
					Within the State	Outside the State	
<b>United States</b>	<b>297,355,080</b>	<b>83.8</b>	<b>16.2</b>	<b>9.6</b>	<b>6.6</b>	<b>3.4</b>	<b>3.2</b>
<b>Appalachian Region</b>	<b>24,382,754</b>	<b>85.5</b>	<b>14.5</b>	<b>8.4</b>	<b>6.1</b>	<b>3.5</b>	<b>2.7</b>
<b>Subregions</b>							
Northern Appalachia	8,225,187	86.9	13.1	7.9	5.2	3.1	2.1
North Central Appalachia	2,337,498	85.9	14.1	8.0	6.2	3.3	2.9
Central Appalachia	1,887,321	86.9	13.1	7.8	5.4	3.2	2.1
South Central Appalachia	4,528,337	84.7	15.3	8.7	6.7	3.6	3.1
Southern Appalachia	7,404,411	83.9	16.1	9.1	7.0	3.9	3.1
<b>County Types</b>							
Large Metros (pop. 1 million +)	5,572,906	85.6	14.4	8.4	6.1	3.4	2.7
Small Metros (pop. <1 million)	9,800,682	84.5	15.5	9.0	6.5	3.4	3.1
Nonmetro, Adjacent to Large Metros	1,649,971	85.8	14.2	8.1	6.1	3.9	2.2
Nonmetro, Adjacent to Small Metros	4,875,477	86.4	13.6	7.7	5.9	3.7	2.3
Rural (nonmetro, not adj. to a metro)	2,483,718	87.1	12.9	7.5	5.4	3.2	2.2
<b>Alabama</b>	<b>4,573,443</b>	<b>83.9</b>	<b>16.1</b>	<b>9.6</b>	<b>6.6</b>	<b>3.3</b>	<b>3.2</b>
Appalachian Alabama	2,934,265	84.0	16.0	9.7	6.4	3.6	2.8
Non-Appalachian Alabama	1,639,178	83.7	16.3	9.5	6.9	2.9	3.9
<b>Georgia</b>	<b>9,355,788</b>	<b>81.7</b>	<b>18.3</b>	<b>9.1</b>	<b>9.2</b>	<b>5.2</b>	<b>4.1</b>
Appalachian Georgia	2,746,504	83.7	16.3	8.3	8.0	4.7	3.3
Non-Appalachian Georgia	6,609,284	80.8	19.2	9.4	9.8	5.4	4.4
<b>Kentucky</b>	<b>4,194,540</b>	<b>83.7</b>	<b>16.3</b>	<b>9.4</b>	<b>7.0</b>	<b>3.7</b>	<b>3.3</b>
Appalachian Kentucky	1,173,395	85.9	14.1	8.3	5.8	3.5	2.2
Non-Appalachian Kentucky	3,021,145	82.8	17.2	9.8	7.5	3.8	3.7
<b>Maryland</b>	<b>5,560,724</b>	<b>85.5</b>	<b>14.5</b>	<b>7.4</b>	<b>7.1</b>	<b>3.2</b>	<b>3.8</b>
Appalachian Maryland	243,495	85.8	14.2	7.6	6.6	3.6	3.0
Non-Appalachian Maryland	5,317,229	85.5	14.5	7.4	7.1	3.2	3.9
<b>Mississippi</b>	<b>2,879,762</b>	<b>83.7</b>	<b>16.3</b>	<b>9.2</b>	<b>7.1</b>	<b>4.1</b>	<b>3.1</b>
Appalachian Mississippi	610,765	84.9	15.1	8.7	6.4	4.1	2.3
Non-Appalachian Mississippi	2,268,997	83.4	16.6	9.3	7.3	4.0	3.3
<b>New York</b>	<b>19,183,125</b>	<b>88.3</b>	<b>11.7</b>	<b>7.0</b>	<b>4.7</b>	<b>2.6</b>	<b>2.2</b>
Appalachian New York	1,042,308	84.4	15.6	8.8	6.7	4.2	2.6
Non-Appalachian New York	18,140,817	88.5	11.5	6.9	4.6	2.5	2.1
<b>North Carolina</b>	<b>8,922,345</b>	<b>82.7</b>	<b>17.3</b>	<b>9.5</b>	<b>7.9</b>	<b>3.7</b>	<b>4.2</b>
Appalachian North Carolina	1,612,437	85.9	14.1	8.1	6.1	3.2	2.9
Non-Appalachian North Carolina	7,309,908	81.9	18.1	9.8	8.3	3.8	4.5
<b>Ohio</b>	<b>11,367,259</b>	<b>84.7</b>	<b>15.3</b>	<b>10.0</b>	<b>5.3</b>	<b>3.3</b>	<b>2.0</b>
Appalachian Ohio	1,998,251	86.8	13.2	8.2	5.0	3.3	1.7
Non-Appalachian Ohio	9,369,008	84.2	15.8	10.4	5.4	3.3	2.0
<b>Pennsylvania</b>	<b>12,372,806</b>	<b>87.2</b>	<b>12.8</b>	<b>7.6</b>	<b>5.2</b>	<b>2.8</b>	<b>2.4</b>
Appalachian Pennsylvania	5,681,770	87.1	12.9	7.8	5.1	3.0	2.2
Non-Appalachian Pennsylvania	6,691,036	87.3	12.7	7.5	5.3	2.6	2.7
<b>South Carolina</b>	<b>4,358,913</b>	<b>84.1</b>	<b>15.9</b>	<b>8.5</b>	<b>7.4</b>	<b>3.2</b>	<b>4.2</b>
Appalachian South Carolina	1,112,877	83.3	16.7	10.1	6.6	3.1	3.5
Non-Appalachian South Carolina	3,246,036	84.4	15.6	7.9	7.7	3.3	4.4
<b>Tennessee</b>	<b>6,075,824</b>	<b>83.3</b>	<b>16.7</b>	<b>10.2</b>	<b>6.5</b>	<b>3.1</b>	<b>3.4</b>
Appalachian Tennessee	2,683,936	84.7	15.3	9.0	6.3	3.3	3.1
Non-Appalachian Tennessee	3,391,888	82.2	17.8	11.1	6.7	3.0	3.7
<b>Virginia</b>	<b>7,619,716</b>	<b>83.3</b>	<b>16.7</b>	<b>6.9</b>	<b>9.8</b>	<b>5.3</b>	<b>4.5</b>
Appalachian Virginia	750,665	84.3	15.7	7.5	8.1	5.1	3.0
Non-Appalachian Virginia	6,869,051	83.2	16.8	6.8	10.0	5.4	4.6
<b>West Virginia (entire state)</b>	<b>1,792,086</b>	<b>87.0</b>	<b>13.0</b>	<b>7.3</b>	<b>5.7</b>	<b>2.5</b>	<b>3.2</b>

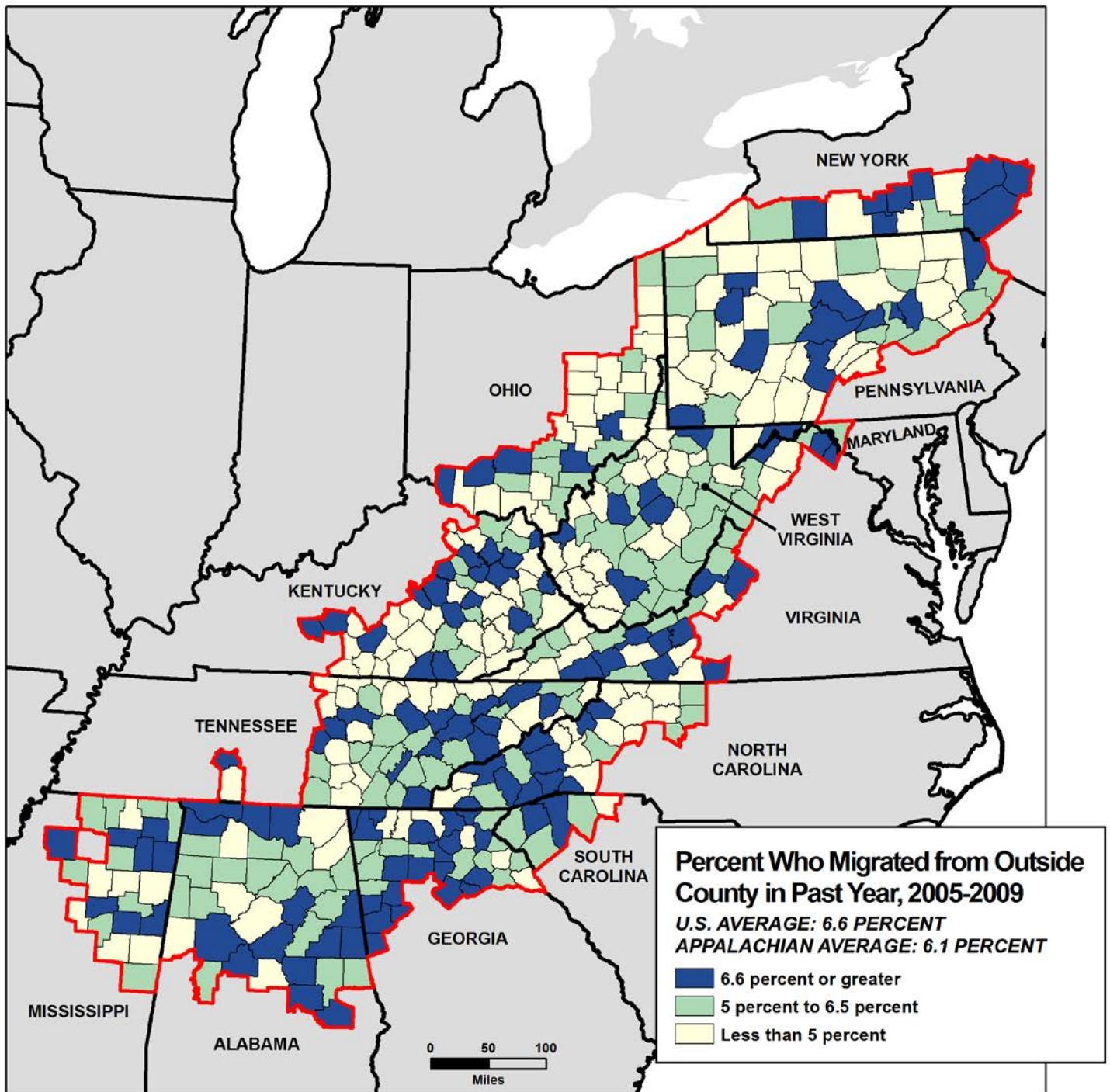
Data Source: U.S. Census Bureau, 2005-2009 American Community Survey.

**Figure 6.1: Percent of Persons Ages 1 and Over in the Appalachian Region Who Had Moved in the Past Year, 2005-2009**



While residential mobility in Appalachia was slightly below the national average, about one-sixth of the region's counties buck the trend, as the percentage of residents who moved in the past year exceeded the U.S. average. Most of these counties are in southern or south central Appalachia, and about half grew faster than the national average between 2000 and 2010. In 79 counties, by contrast, less than 10 percent of residents had moved in the previous 12 months; most of these were in northern, north central, and central Appalachia.

**Figure 6.2: Percent of Persons Ages 1 and Over in the Appalachian Region Who Had Migrated From Outside Their County of Residence in the Past Year, 2005-2009**

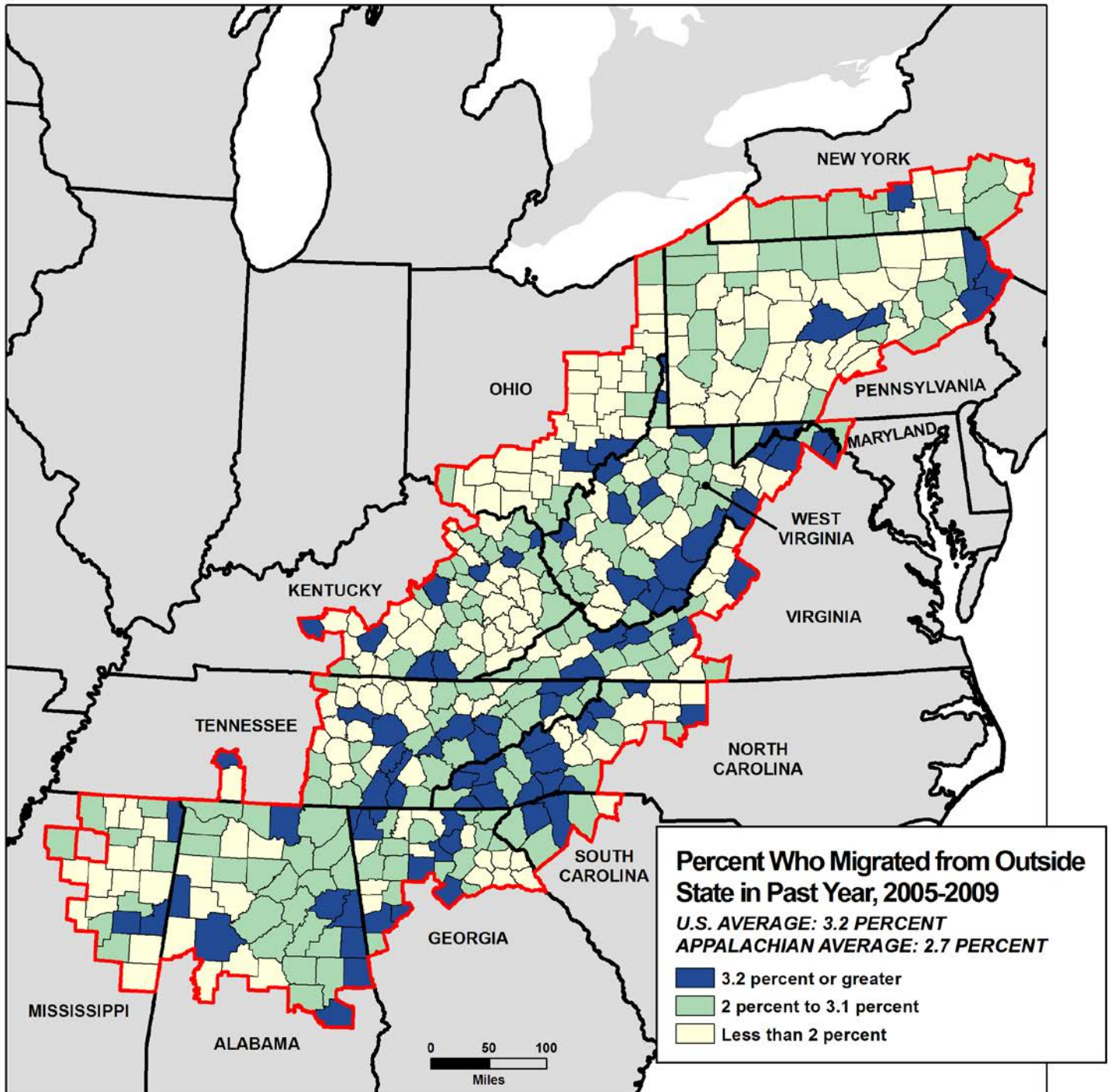


Map Title: Percent of Persons Ages 1 and Over in the Appalachian Region Who Had Migrated From Outside Their County of Residence in the Past Year, 2005-2009  
 Data Source: U.S. Census Bureau, 2005-2009 American Community Survey.

Although people in Appalachia are slightly less likely to have migrated from outside their county of residence than Americans as a whole, residents in 130 of the region’s counties were more likely to have done so. These counties were scattered throughout the Appalachian region, yet less than half of them grew faster than the national average between 2000 and 2010. In 163 counties, less than 5 percent of the residents had migrated from another county—most of these counties were outside metropolitan areas, and nearly half of them lost population over the decade.



**Figure 6.3: Percent of Persons Ages 1 and Over in the Appalachian Region Who Had Migrated From Outside Their State of Residence in the Past Year, 2005-2009**



Map Title: Percent of Persons Ages 1 and Over in the Appalachian Region Who Had Migrated From Outside Their State of Residence in the Past Year, 2005-2009  
 Data Source: U.S. Census Bureau, 2005-2009 American Community Survey.

In 88 of Appalachia’s 420 counties, the share of persons who had migrated from outside their state of residence exceeded the national average of 3.2 percent. Most of these counties were in southern and south central Appalachia, and half grew at or above the national average during the 2000s. In 180 counties, however, less than 2 percent of people had come from out of state in the past year. Nearly all of these counties either lost population during the decade, or grew at a rate below the national average.