

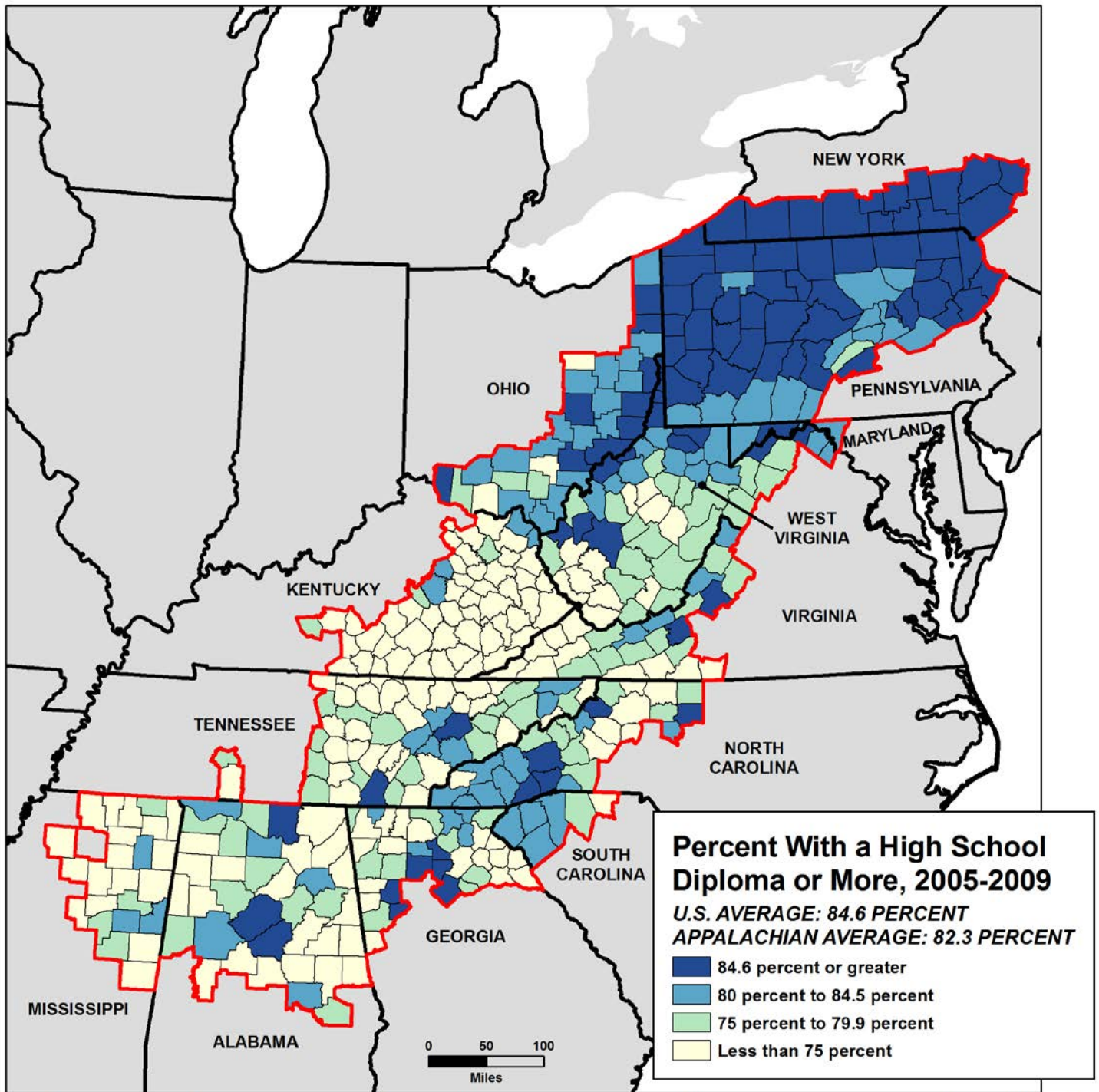
CHAPTER 5: EDUCATION

Table 5.1: Educational Attainment of Persons Ages 25 and Over in the Appalachian Region, 2005-2009

Education (Highest Level Attained)	Total Population Ages 25 and Over, 2005-2009	Percent of Population Ages 25 and Over				
		Less than High School Diploma	High School Diploma or More			
			Total	H.S. Grad, No Postsecondary Degree	Associate's Degree	Bachelor's Degree or More
United States	197,440,772	15.4	84.6	49.6	7.4	27.5
Appalachian Region	16,656,836	17.7	82.3	54.7	7.2	20.4
Subregions						
Northern Appalachia	5,707,850	12.8	87.2	57.8	8.1	21.2
North Central Appalachia	1,604,195	17.5	82.5	59.3	6.1	17.1
Central Appalachia	1,308,038	28.9	71.1	53.6	5.5	11.9
South Central Appalachia	3,135,069	19.4	80.6	52.6	7.0	20.9
Southern Appalachia	4,901,684	19.5	80.5	51.1	6.9	22.5
County Types						
Large Metros (pop. 1 million +)	3,789,594	12.9	87.1	52.0	7.7	27.4
Small Metros (pop. <1 million)	6,670,958	16.6	83.4	54.3	7.3	21.9
Nonmetro, Adjacent to Large Metros	1,117,077	18.6	81.4	58.7	7.1	15.5
Nonmetro, Adjacent to Small Metros	3,373,700	21.2	78.8	57.3	6.9	14.6
Rural (nonmetro, not adj. to a metro)	1,705,507	25.7	74.3	54.5	6.1	13.7
Alabama	3,049,663	19.2	80.8	52.6	6.7	21.5
Appalachian Alabama	1,982,971	19.2	80.8	52.1	6.6	22.1
Non-Appalachian Alabama	1,066,692	19.1	80.9	53.4	7.0	20.5
Georgia	6,031,157	17.1	82.9	49.4	6.4	27.1
Appalachian Georgia	1,777,646	18.7	81.3	50.4	6.7	24.2
Non-Appalachian Georgia	4,253,511	16.3	83.7	49.0	6.3	28.4
Kentucky	2,825,618	19.7	80.3	53.8	6.5	20.0
Appalachian Kentucky	801,977	29.1	70.9	52.9	5.5	12.6
Non-Appalachian Kentucky	2,023,641	16.0	84.0	54.1	6.9	23.0
Maryland	3,738,604	12.5	87.5	46.1	6.3	35.2
Appalachian Maryland	167,987	16.3	83.7	58.7	7.7	17.3
Non-Appalachian Maryland	3,570,617	12.3	87.7	45.5	6.2	36.0
Mississippi	1,842,950	21.1	78.9	52.4	7.5	19.1
Appalachian Mississippi	394,781	25.0	75.0	52.3	6.9	15.8
Non-Appalachian Mississippi	1,448,169	20.0	80.0	52.4	7.6	20.0
New York	13,047,684	15.8	84.2	44.2	8.1	31.8
Appalachian New York	687,604	12.6	87.4	52.9	11.0	23.4
Non-Appalachian New York	12,360,080	16.0	84.0	43.8	8.0	32.3
North Carolina	5,940,248	17.0	83.0	49.0	8.2	25.8
Appalachian North Carolina	1,126,455	18.8	81.2	50.7	8.3	22.2
Non-Appalachian North Carolina	4,813,793	16.6	83.4	48.6	8.2	26.6
Ohio	7,671,550	13.2	86.8	56.1	7.1	23.6
Appalachian Ohio	1,365,325	16.4	83.6	61.9	6.8	14.9
Non-Appalachian Ohio	6,306,225	12.5	87.5	54.8	7.2	25.4
Pennsylvania	8,510,688	13.1	86.9	53.7	7.2	26.0
Appalachian Pennsylvania	3,976,113	12.2	87.8	57.5	8.0	22.4
Non-Appalachian Pennsylvania	4,534,575	14.0	86.0	50.4	6.5	29.1
South Carolina	2,915,965	17.8	82.2	50.6	8.2	23.5
Appalachian South Carolina	746,286	19.3	80.7	49.5	8.2	23.1
Non-Appalachian South Carolina	2,169,679	17.3	82.7	50.9	8.2	23.6
Tennessee	4,110,195	18.2	81.8	53.6	5.8	22.4
Appalachian Tennessee	1,860,990	20.4	79.6	54.3	5.8	19.5
Non-Appalachian Tennessee	2,249,205	16.4	83.6	53.0	5.8	24.8
Virginia	5,092,358	14.2	85.8	45.7	6.6	33.4
Appalachian Virginia	515,016	23.7	76.3	51.9	7.8	16.6
Non-Appalachian Virginia	4,577,342	13.2	86.8	45.0	6.5	35.3
West Virginia (entire state)	1,253,685	18.4	81.6	58.8	5.7	17.1

Data Source: U.S. Census Bureau, 2005-2009 American Community Survey.

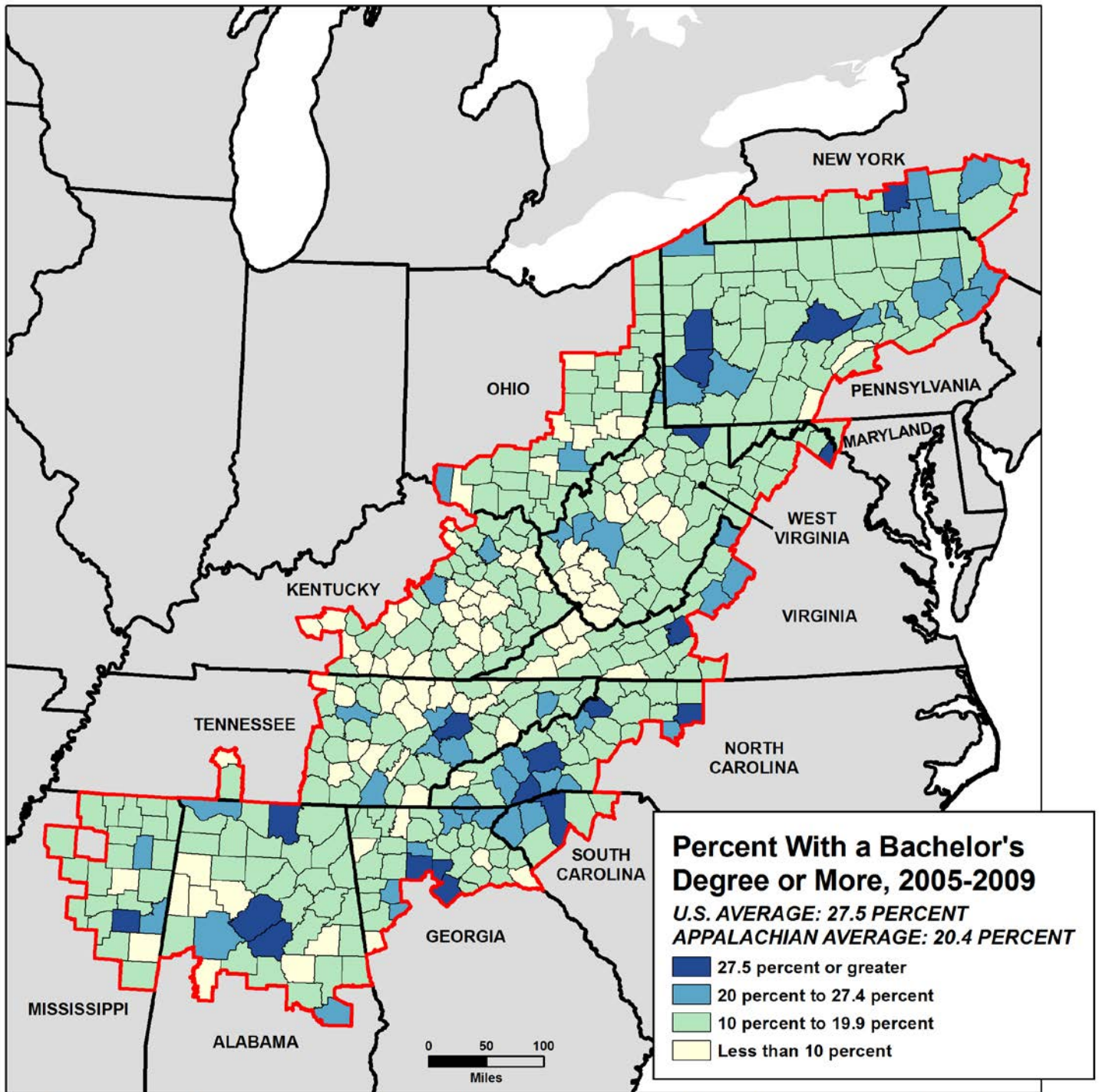
Figure 5.1: Percent of Persons Ages 25 and Over in the Appalachian Region With a High School Diploma or More, 2005-2009



Map Title: Percent of Persons Ages 25 and Over in the Appalachian Region With a High School Diploma or More, 2005-2009
 Data Source: U.S. Census Bureau, 2005-2009 American Community Survey.

Although the share of Appalachian adults with at least a high school diploma is slightly below the national average, it exceeds the national share in 93 counties in the region—two-thirds of them in northern Appalachia. Yet in 161 counties, less than three-fourths of adults have completed high school, and nearly all of these counties are in central, south central, and southern Appalachia.

Figure 5.2: Percent of Persons Ages 25 and Over in the Appalachian Region With a Bachelor's Degree or More, 2005-2009



Map Title: Percent of Persons Ages 25 and Over in the Appalachian Region With a Bachelor's Degree or More, 2005-2009
 Data Source: U.S. Census Bureau, 2005-2009 American Community Survey.

In all but a handful of Appalachian counties, the share of adults with a bachelor's degree or more is lower than the national average of 27.5 percent. In fact, in 349 of the region's 420 counties, less than one-fifth of adults are graduates of a four-year college or university. And in 81 counties—mostly outside metropolitan areas and more than half in central Appalachia—fewer than one in 10 adults has at least a bachelor's degree. Of the 20 counties where the share of college graduates matches or exceeds the national average, virtually all are either in large or fast-growing metropolitan areas, or home to a well-known college or university. Most of these counties also grew faster than the national average between 2000 and 2010.