

CHAPTER 2: AGE

Table 2.1: Population in the Appalachian Region by Age Group, 2010

Population by Age Group	Total Population, 2010	Percent of Population				Median Age (Years)
		Under Age 18	Ages 18-24	Ages 25-64	Ages 65 and over	
United States	308,745,538	24.0	9.9	53.0	13.0	37.2
Appalachian Region	25,243,456	22.5	9.7	52.8	15.1	39.8
Subregions						
Northern Appalachia	8,384,817	20.9	10.0	52.3	16.8	41.7
North Central Appalachia	2,423,126	21.8	9.6	53.3	15.3	40.3
Central Appalachia	1,918,473	22.3	8.6	54.0	15.0	40.4
South Central Appalachia	4,718,420	21.4	9.7	52.5	16.3	40.8
Southern Appalachia	7,798,620	25.0	9.5	53.0	12.6	37.1
County Types						
Large Metros (pop. 1 million +)	5,772,098	23.9	8.8	54.1	13.3	38.5
Small Metros (pop. <1 million)	10,187,442	22.0	10.4	52.4	15.1	39.5
Nonmetro, Adjacent to Large Metros	1,696,846	22.8	9.8	51.9	15.5	40.3
Nonmetro, Adjacent to Small Metros	5,046,795	21.7	9.3	52.5	16.5	41.3
Rural (nonmetro, not adj. to a metro)	2,540,275	22.4	9.1	52.4	16.1	40.6
Alabama	4,779,736	23.7	10.0	52.5	13.8	37.9
Appalachian Alabama	3,064,522	23.4	9.8	53.0	13.8	38.1
Non-Appalachian Alabama	1,715,214	24.2	10.5	51.6	13.7	37.1
Georgia	9,687,653	25.7	10.0	53.6	10.7	35.3
Appalachian Georgia	2,933,432	27.1	8.6	53.8	10.5	35.9
Non-Appalachian Georgia	6,754,221	25.1	10.6	53.6	10.7	35.1
Kentucky	4,339,367	23.6	9.5	53.6	13.3	38.1
Appalachian Kentucky	1,184,278	22.8	9.1	53.8	14.4	39.5
Non-Appalachian Kentucky	3,155,089	23.9	9.7	53.5	12.9	37.3
Maryland	5,773,552	23.4	9.7	54.7	12.3	38.0
Appalachian Maryland	252,614	21.4	9.6	53.3	15.7	40.4
Non-Appalachian Maryland	5,520,938	23.5	9.7	54.7	12.1	37.7
Mississippi	2,967,297	25.5	10.3	51.4	12.8	36.0
Appalachian Mississippi	629,169	24.6	10.7	50.6	14.1	37.0
Non-Appalachian Mississippi	2,338,128	25.7	10.2	51.7	12.5	35.7
New York	19,378,102	22.3	10.2	53.9	13.5	38.0
Appalachian New York	1,066,421	21.0	12.7	50.7	15.6	40.0
Non-Appalachian New York	18,311,681	22.4	10.1	54.1	13.4	37.8
North Carolina	9,535,483	23.9	9.8	53.3	12.9	37.4
Appalachian North Carolina	1,698,908	21.6	9.1	52.5	16.8	41.3
Non-Appalachian North Carolina	7,836,575	24.4	10.0	53.4	12.1	36.5
Ohio	11,536,504	23.7	9.5	52.7	14.1	38.8
Appalachian Ohio	2,042,040	23.0	9.0	52.4	15.6	40.5
Non-Appalachian Ohio	9,494,464	23.8	9.7	52.8	13.7	38.3
Pennsylvania	12,702,379	22.0	9.9	52.7	15.4	40.1
Appalachian Pennsylvania	5,792,195	20.5	10.0	52.5	17.0	42.0
Non-Appalachian Pennsylvania	6,910,184	23.2	9.9	52.8	14.1	38.5
South Carolina	4,625,364	23.4	10.3	52.7	13.7	37.9
Appalachian South Carolina	1,171,497	23.7	10.2	52.3	13.8	37.9
Non-Appalachian South Carolina	3,453,867	23.3	10.3	52.8	13.6	37.7
Tennessee	6,346,105	23.6	9.6	53.4	13.4	38.0
Appalachian Tennessee	2,785,342	21.9	9.2	53.0	15.9	40.5
Non-Appalachian Tennessee	3,560,763	24.9	9.8	53.8	11.5	36.0
Virginia	8,001,024	23.2	10.0	54.6	12.2	37.5
Appalachian Virginia	770,044	19.6	11.7	52.0	16.8	41.3
Non-Appalachian Virginia	7,230,980	23.5	9.9	54.9	11.7	37.0
West Virginia (entire state)	1,852,994	20.9	9.1	53.9	16.0	41.3

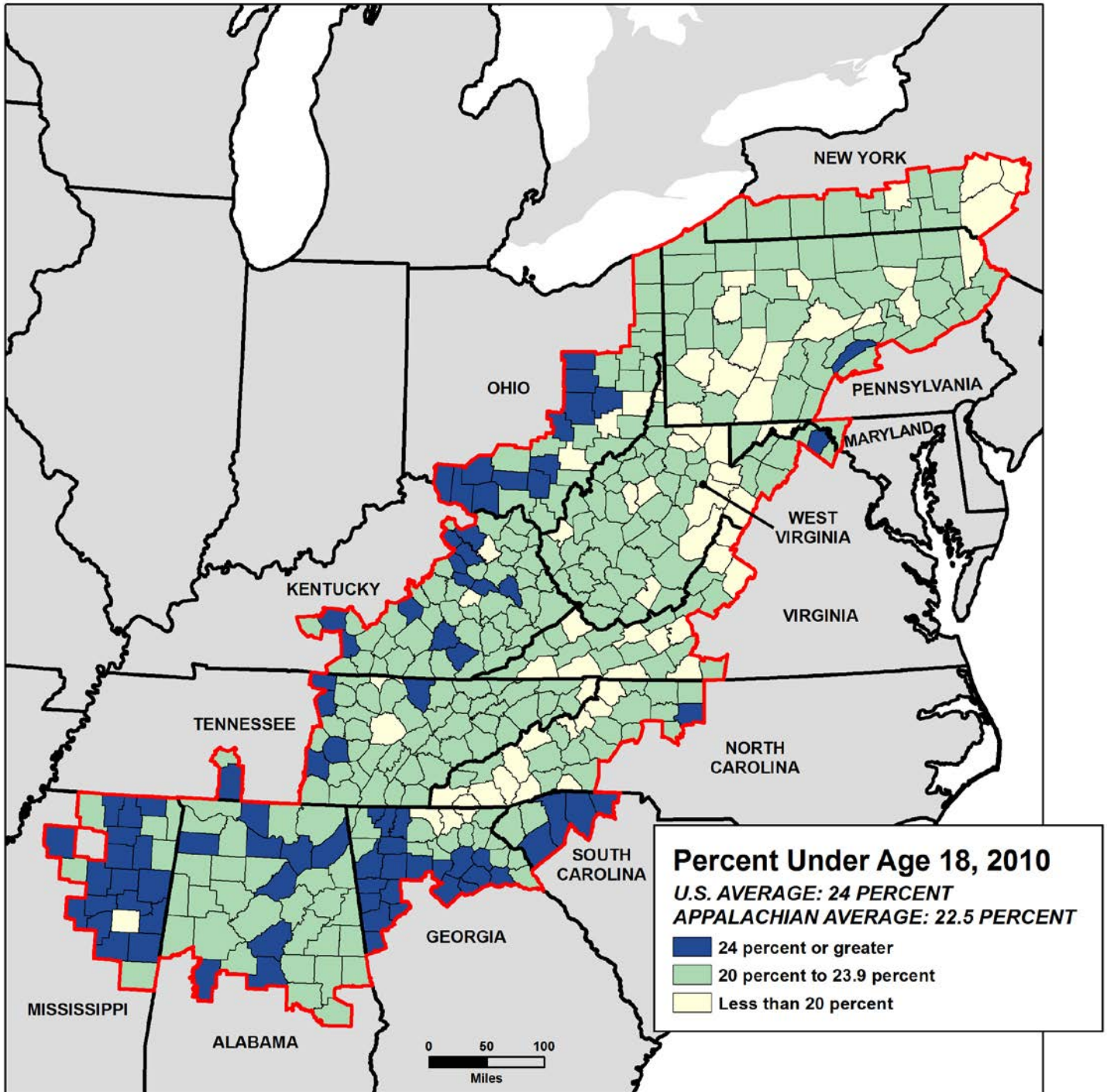
Data Source: U.S. Census Bureau, 2010 Decennial Census.

Table 2.2: Population Change in the Appalachian Region by Age Group, 2000-2010

Change in Population by Age Group	Percent Change, 2000-2010			
	Under Age 18	Ages 18-24	Ages 25-64	Ages 65 and over
United States	2.6	13.0	11.3	15.1
Appalachian Region	1.1	8.7	7.5	12.3
Subregions				
Northern Appalachia	-10.0	8.2	1.5	0.1
North Central Appalachia	-2.4	0.7	6.0	12.4
Central Appalachia	-4.6	-6.6	2.8	13.7
South Central Appalachia	5.1	10.3	8.0	23.3
Southern Appalachia	14.0	15.4	16.2	24.8
County Types				
Large Metros (pop. 1 million +)	8.4	16.6	13.0	9.7
Small Metros (pop. <1 million)	1.8	11.0	7.5	12.9
Nonmetro, Adjacent to Large Metros	-3.7	5.7	5.7	11.6
Nonmetro, Adjacent to Small Metros	-3.3	3.0	4.4	13.6
Rural (nonmetro, not adj. to a metro)	-5.8	-2.5	2.8	12.5
Alabama	0.8	9.0	8.9	13.5
Appalachian Alabama	2.4	10.9	8.8	13.2
Non-Appalachian Alabama	-1.8	5.9	9.1	13.9
Georgia	14.9	15.8	18.2	31.4
Appalachian Georgia	34.5	26.7	30.1	50.9
Non-Appalachian Georgia	7.5	12.4	13.7	24.6
Kentucky	2.9	2.7	8.6	14.5
Appalachian Kentucky	-4.3	-5.9	3.5	13.9
Non-Appalachian Kentucky	5.7	6.2	10.7	14.8
Maryland	-0.2	23.6	9.2	18.1
Appalachian Maryland	0.3	13.9	7.7	8.6
Non-Appalachian Maryland	-0.3	24.1	9.3	18.7
Mississippi	-2.5	-2.0	7.9	10.7
Appalachian Mississippi	-4.8	-1.0	4.6	10.1
Non-Appalachian Mississippi	-1.9	-2.2	8.8	10.9
New York	-7.8	12.4	3.8	6.9
Appalachian New York	-12.7	8.2	1.6	4.6
Non-Appalachian New York	-7.5	12.7	3.9	7.1
North Carolina	16.2	16.3	17.9	27.3
Appalachian North Carolina	7.1	13.8	9.5	22.5
Non-Appalachian North Carolina	18.1	16.9	19.9	28.9
Ohio	-5.5	4.1	3.1	7.6
Appalachian Ohio	-7.8	-0.8	1.8	8.0
Non-Appalachian Ohio	-5.0	5.1	3.4	7.5
Pennsylvania	-4.5	15.3	5.4	2.1
Appalachian Pennsylvania	-9.5	10.2	1.9	-1.2
Non-Appalachian Pennsylvania	-0.3	19.9	8.6	5.7
South Carolina	7.0	16.8	15.5	30.2
Appalachian South Carolina	10.7	16.0	12.1	25.9
Non-Appalachian South Carolina	5.8	17.1	16.7	31.7
Tennessee	7.0	10.5	11.6	21.3
Appalachian Tennessee	5.0	8.6	8.6	25.2
Non-Appalachian Tennessee	8.4	11.9	14.0	17.5
Virginia	6.6	18.1	12.9	23.3
Appalachian Virginia	-4.8	2.9	0.0	15.5
Non-Appalachian Virginia	7.8	20.3	14.4	24.6
West Virginia (entire state)	-3.7	-2.0	4.4	7.4

Data Sources: U.S. Census Bureau, 2000 and 2010 Decennial Censuses.

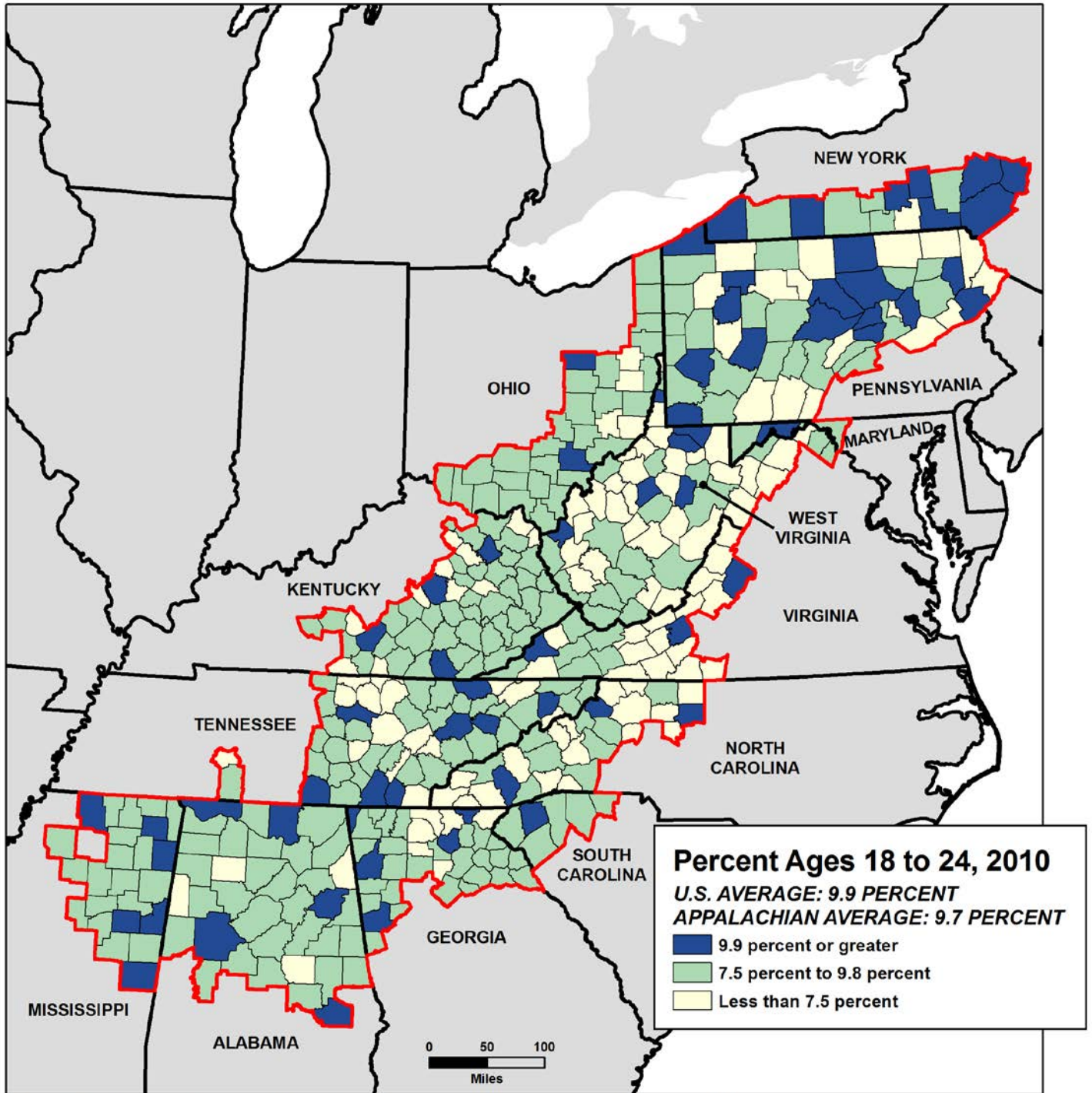
Figure 2.1: Percent of Population in the Appalachian Region Under Age 18, 2010



Map Title: Percent of Population in the Appalachian Region Under Age 18, 2010
 Data Source: U.S. Census Bureau, 2010 Decennial Census.

The percentage of children and youth in the Appalachian population is lower than the national average of 24 percent, with the share falling below 20 percent in nearly one-sixth of the region’s counties (mostly outside metropolitan areas). Yet in nearly one in five Appalachian counties, the proportion of children under age 18 exceeds the national average. Most of these are in southern Appalachia.

Figure 2.2: Percent of Population in the Appalachian Region Ages 18 to 24, 2010

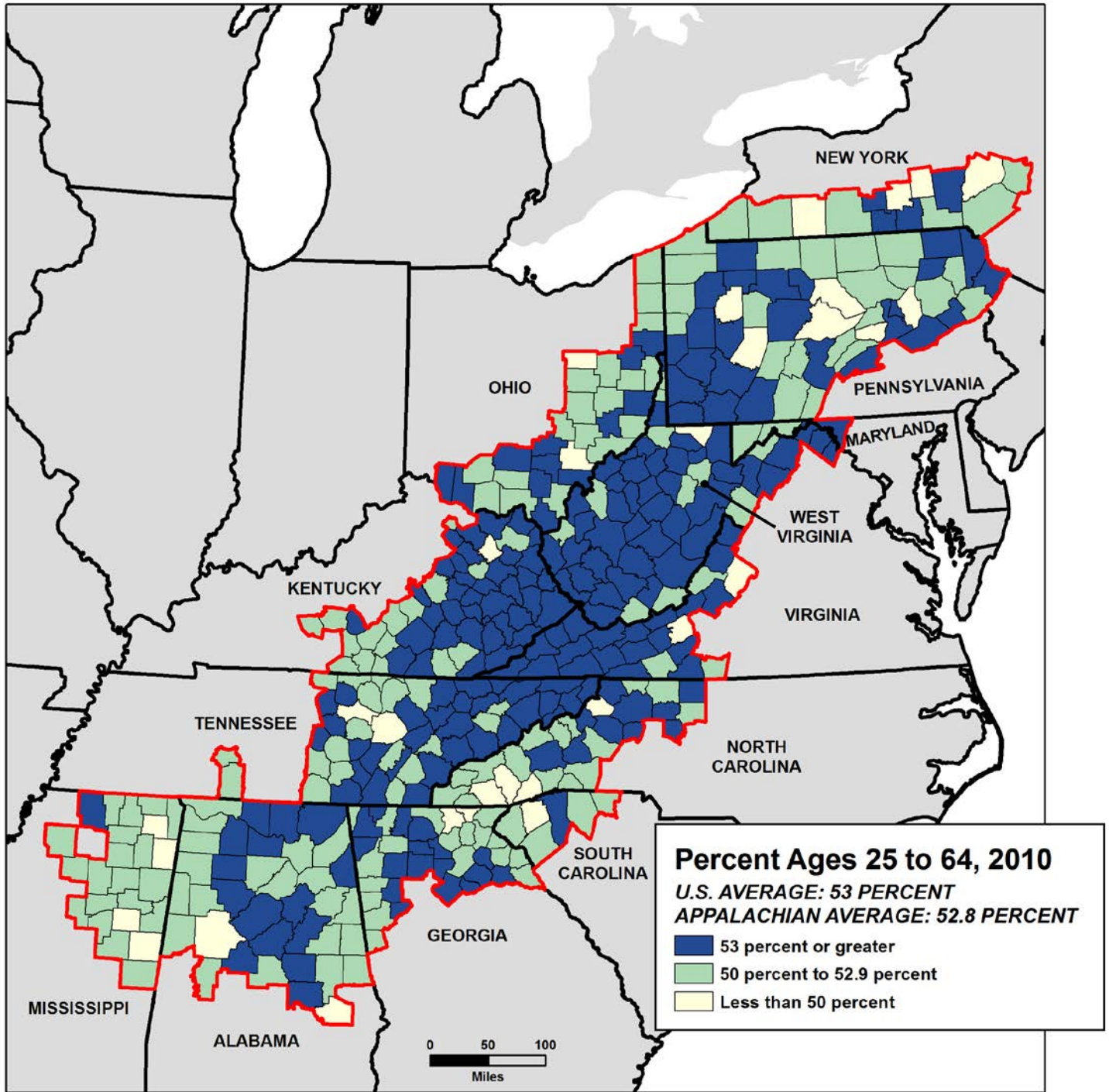


Map Title: Percent of Population in the Appalachian Region Ages 18 to 24, 2010

Data Source: U.S. Census Bureau, 2010 Decennial Census.

The proportion of Appalachian residents ages 18 to 24 roughly equals the national average. But that is not the case in many parts of the region. In 122 counties (86 of which lie outside metropolitan areas), persons in the 18-to-24 age group make up less than 7.5 percent of the population, suggesting a possible lack of opportunities for youth making the transition to adulthood. In contrast, the young adult population exceeds 15 percent in several counties that house colleges and universities.

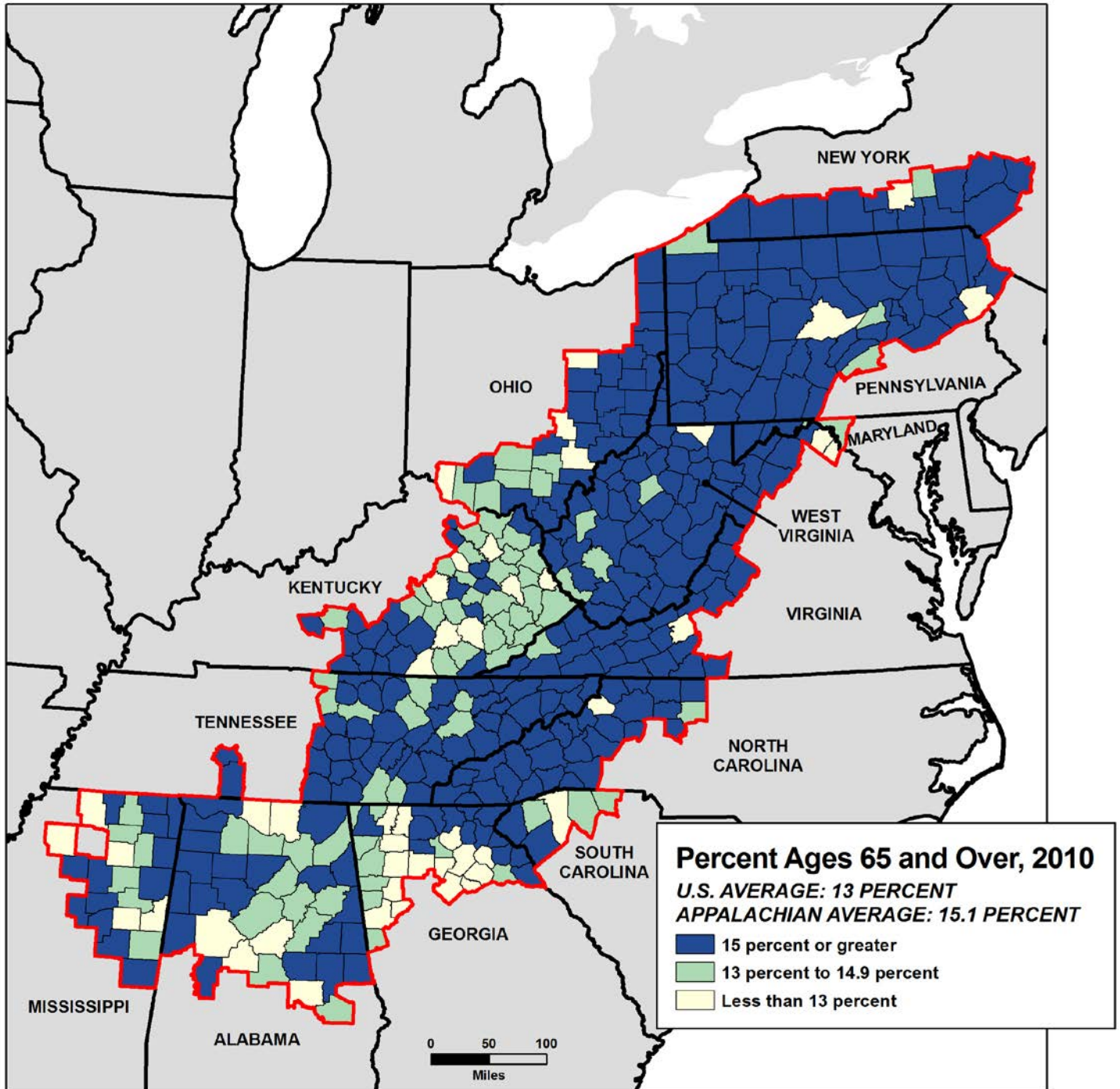
Figure 2.3: Percent of Population in the Appalachian Region Ages 25 to 64, 2010



Map Title: Percent of Population in the Appalachian Region Ages 25 to 64, 2010
 Data Source: U.S. Census Bureau, 2010 Decennial Census.

In both the United States and Appalachia, adults in the prime working ages (ages 25 to 64) make up a slight majority of all residents. In more than half of Appalachian counties, the percentage of persons in this age group exceeds the national average. But there are a handful of counties (mostly outside metropolitan areas) where 25- to 64-year-olds actually make up less than half of the population.

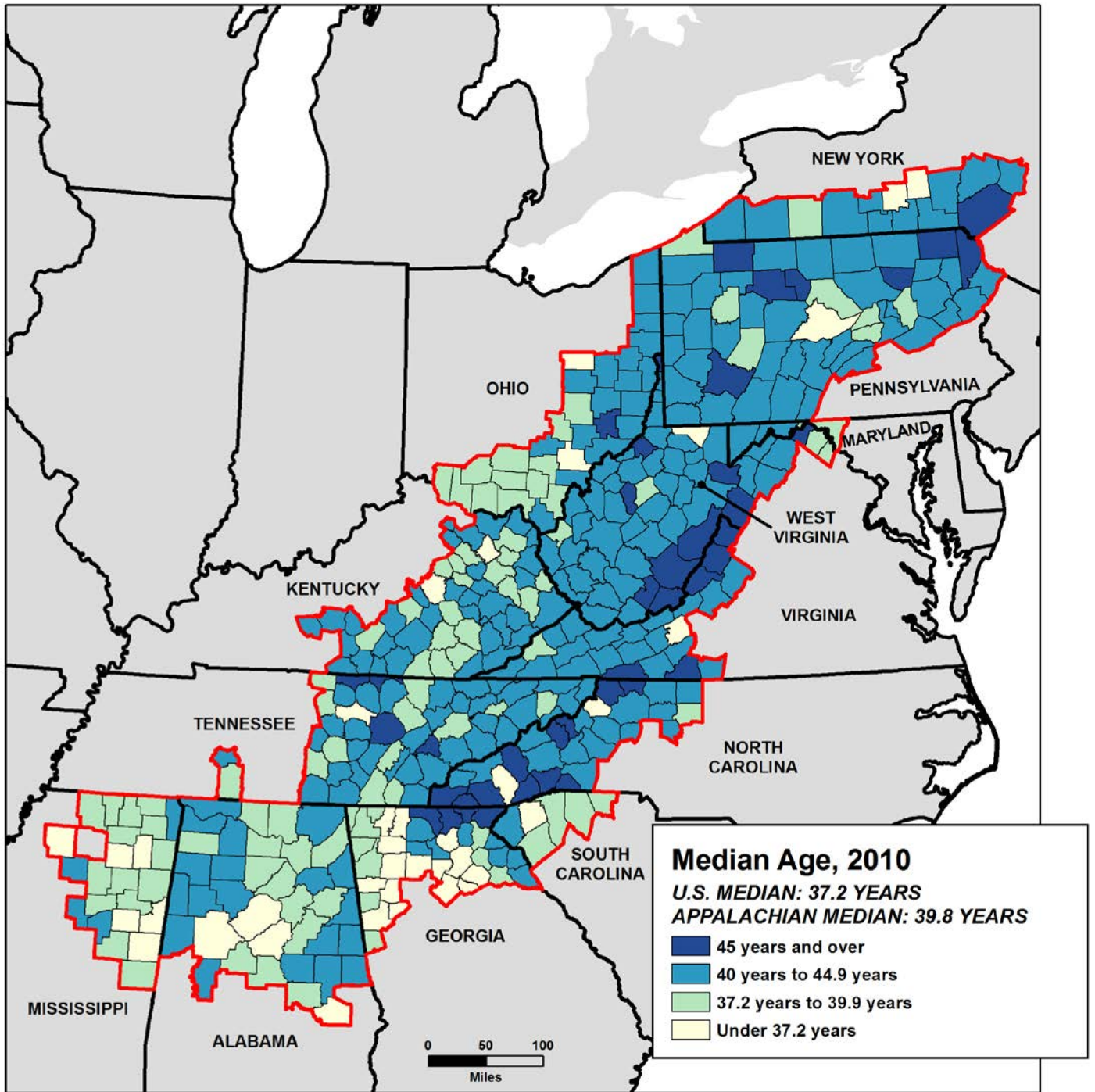
Figure 2.4: Percent of Population in the Appalachian Region Ages 65 and Over, 2010



Map Title: Percent of Population in the Appalachian Region Ages 65 and Over, 2010
Data Source: U.S. Census Bureau, 2010 Decennial Census.

The Appalachian region—as well as 373 of its 420 counties—has a larger proportion of residents ages 65 and older than does the nation as a whole. In fact, older persons make up at least 15 percent of the population in three-fourths of Appalachia’s counties. Most of the counties with older population shares below the national average either house colleges and universities or had growth rates that exceeded the national average.

Figure 2.5: Median Age of Persons in the Appalachian Region, 2010



Map Title: Median Age of Persons in the Appalachian Region, 2010
 Data Source: U.S. Census Bureau, 2010 Decennial Census.

On average, the Appalachian population is older than that of the United States as a whole—more than two years older. In fact, the median age of the population (the point at which half the population is older and half is younger) is at least 40 years in two-thirds of the region’s counties. In one in 10 Appalachian counties, the median age is at least 45 years. Most of the relatively few counties with populations younger than the national average are in southern Appalachia.