

Research and Development for Upstream Oil and Gas Industry *“Safety and the Environment” -SEAB*

Richard Hammack



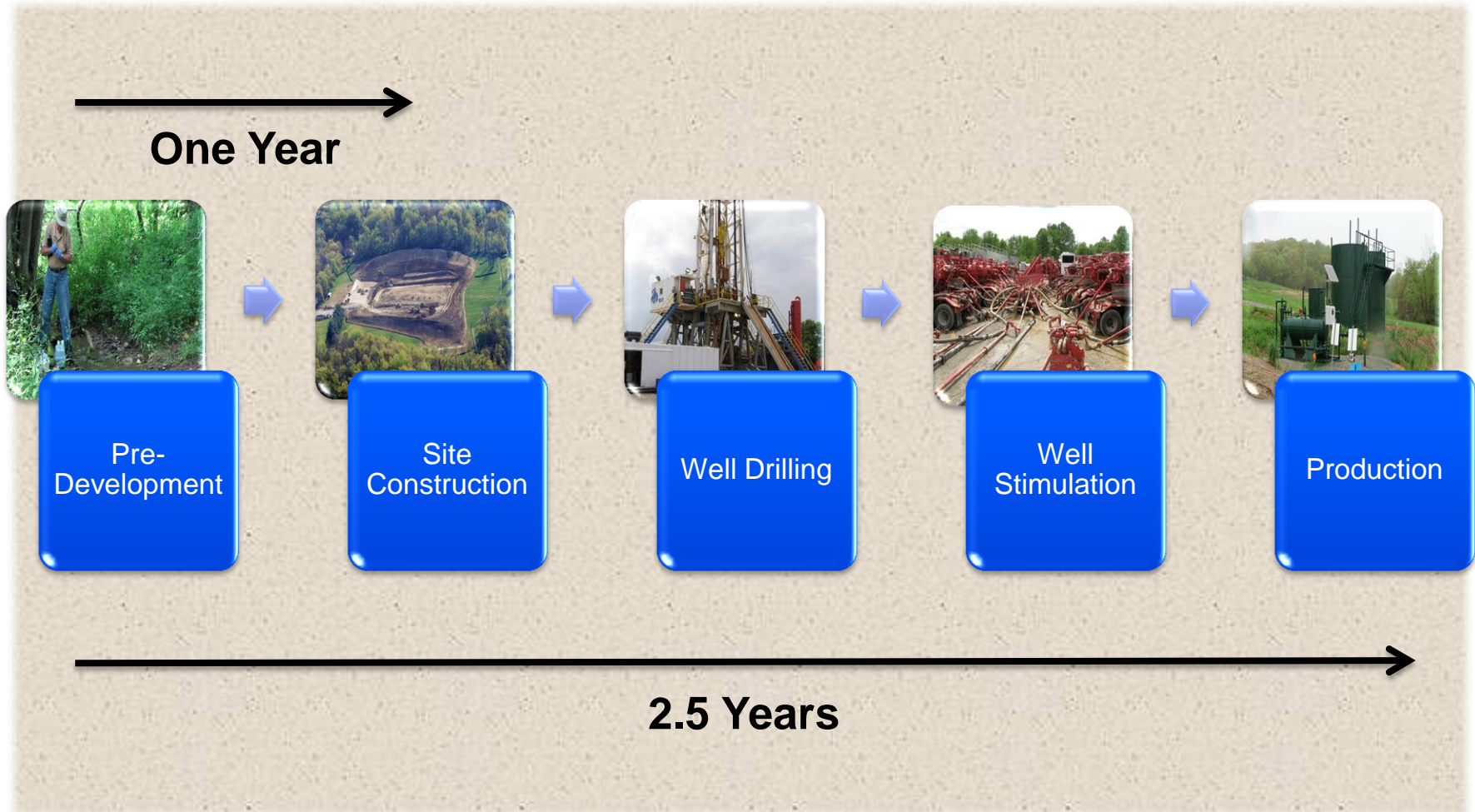
Location of NETL Marcellus Test Sites



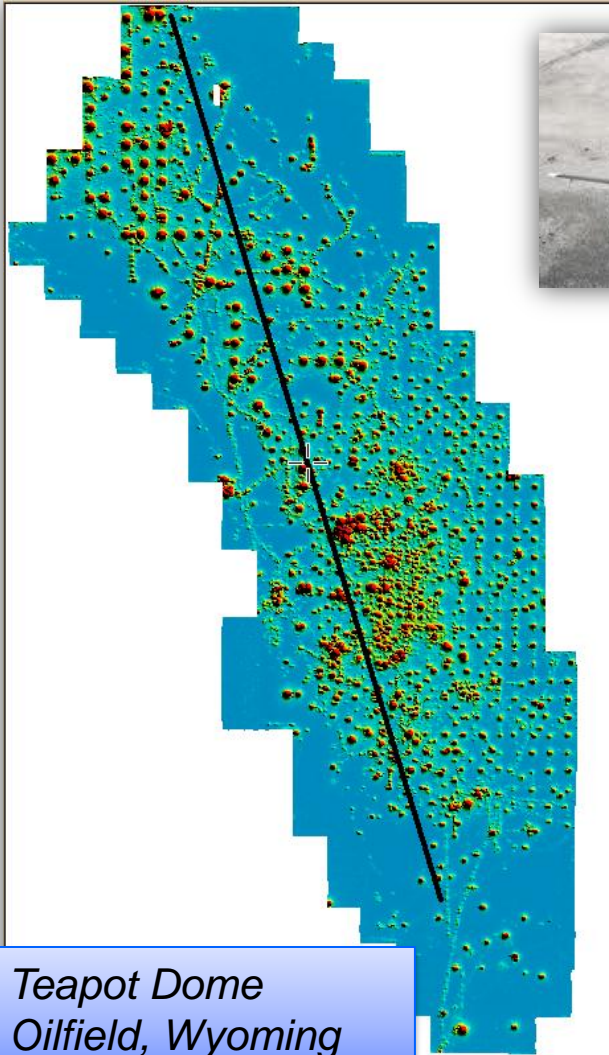
Washington Co. Site



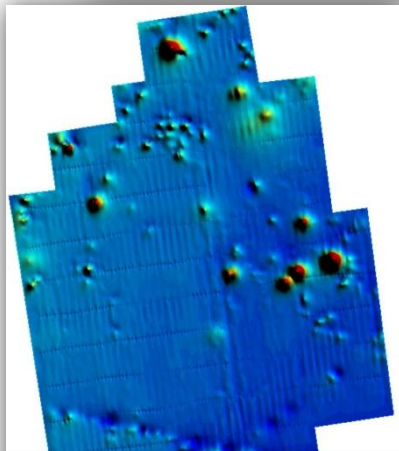
Washington County Site



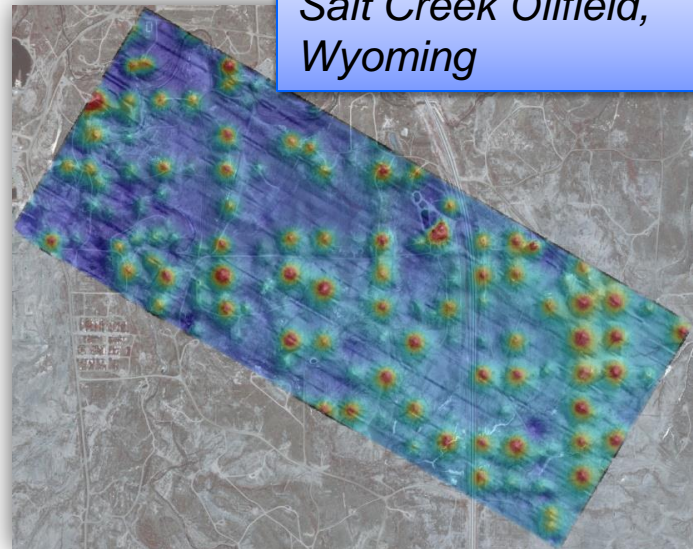
Location of Legacy Wells



Teapot Dome Oilfield, Wyoming



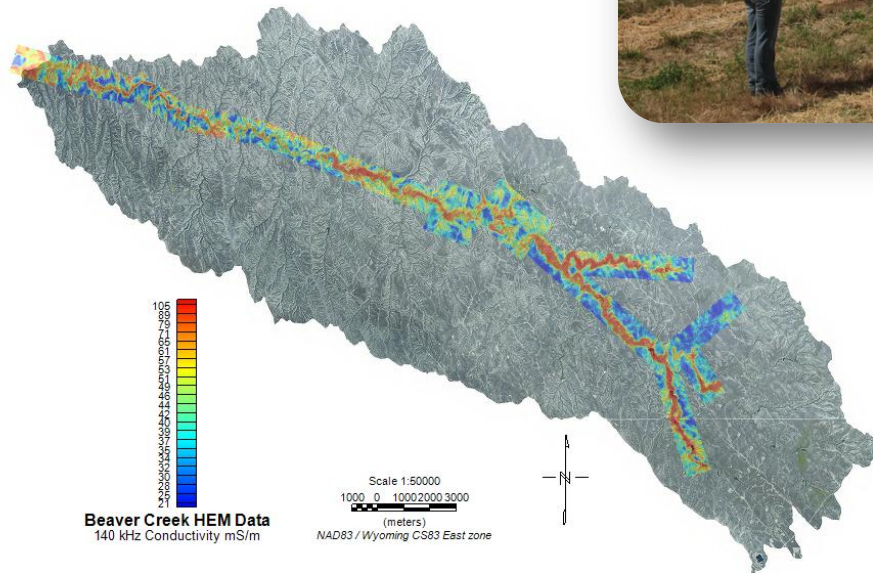
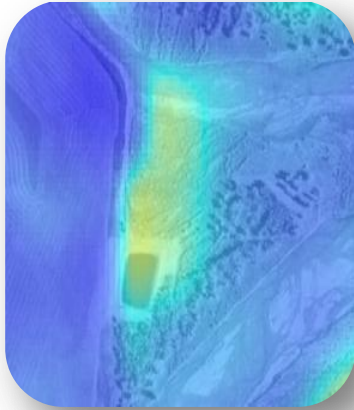
Marcellus Shale Gas, SW Pennsylvania



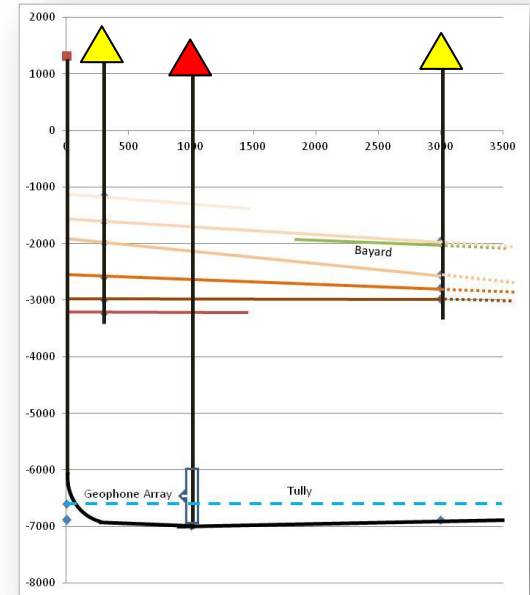
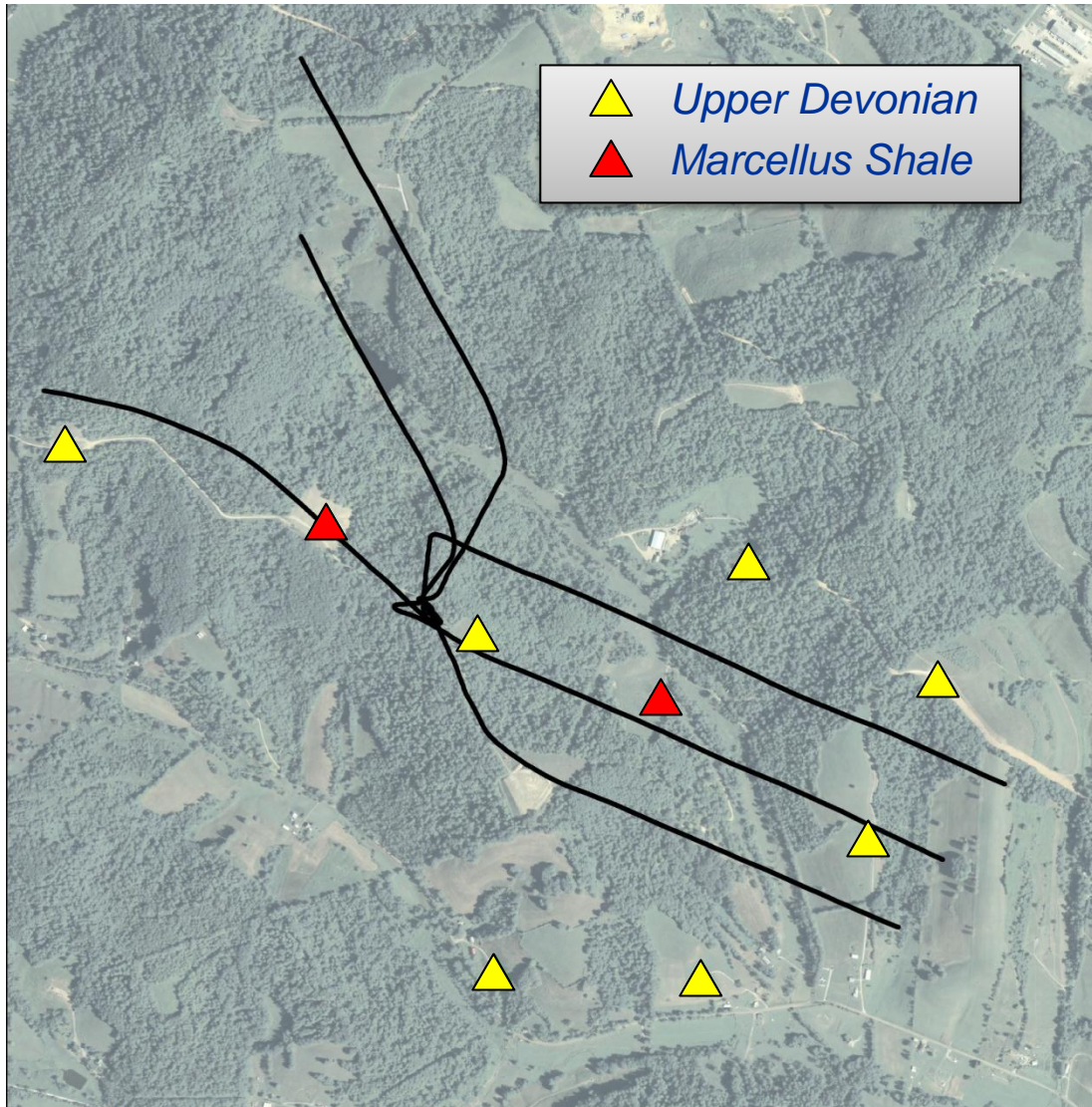
Salt Creek Oilfield, Wyoming

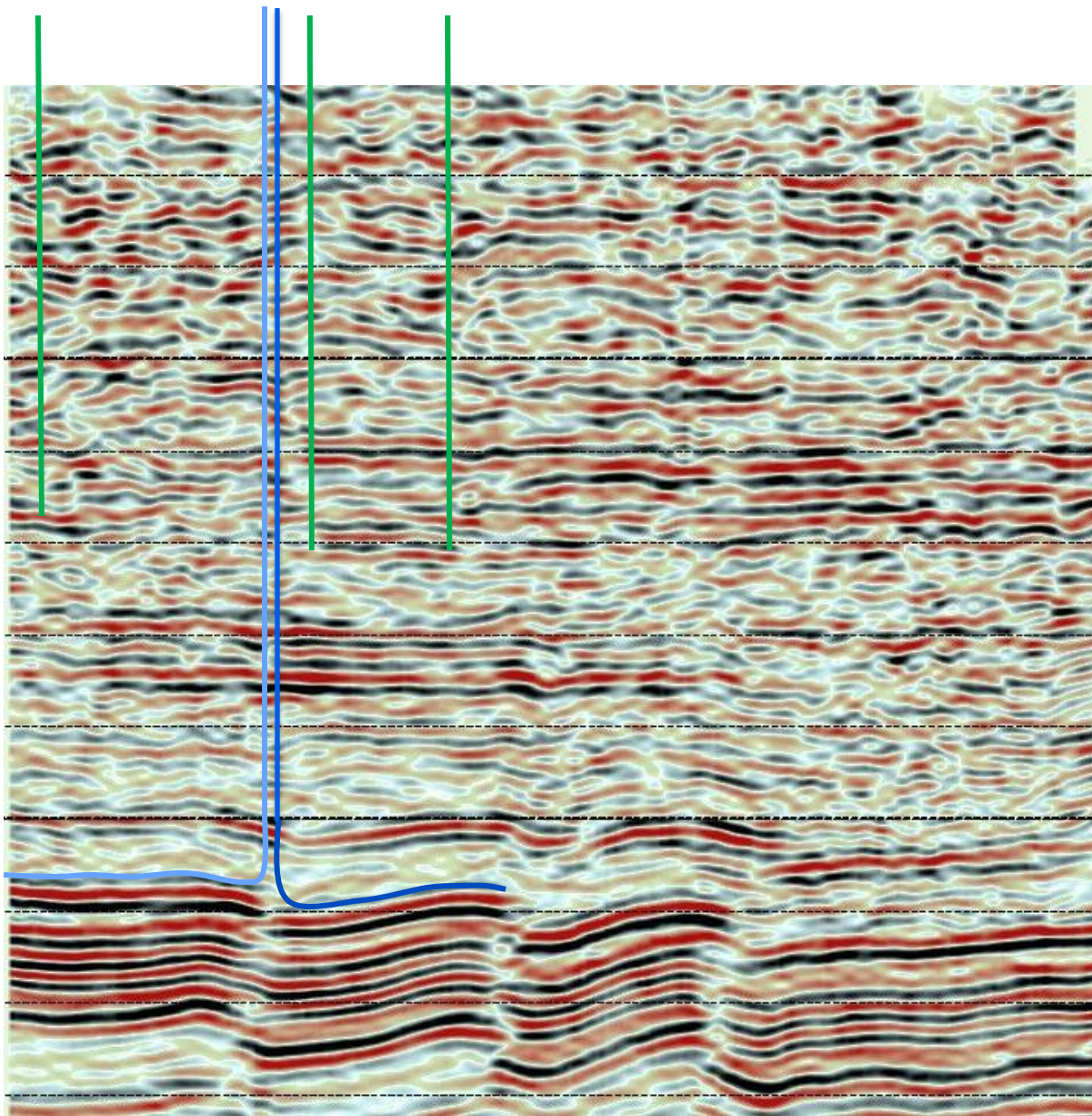


Electromagnetic Mapping of Produced Water Plumes

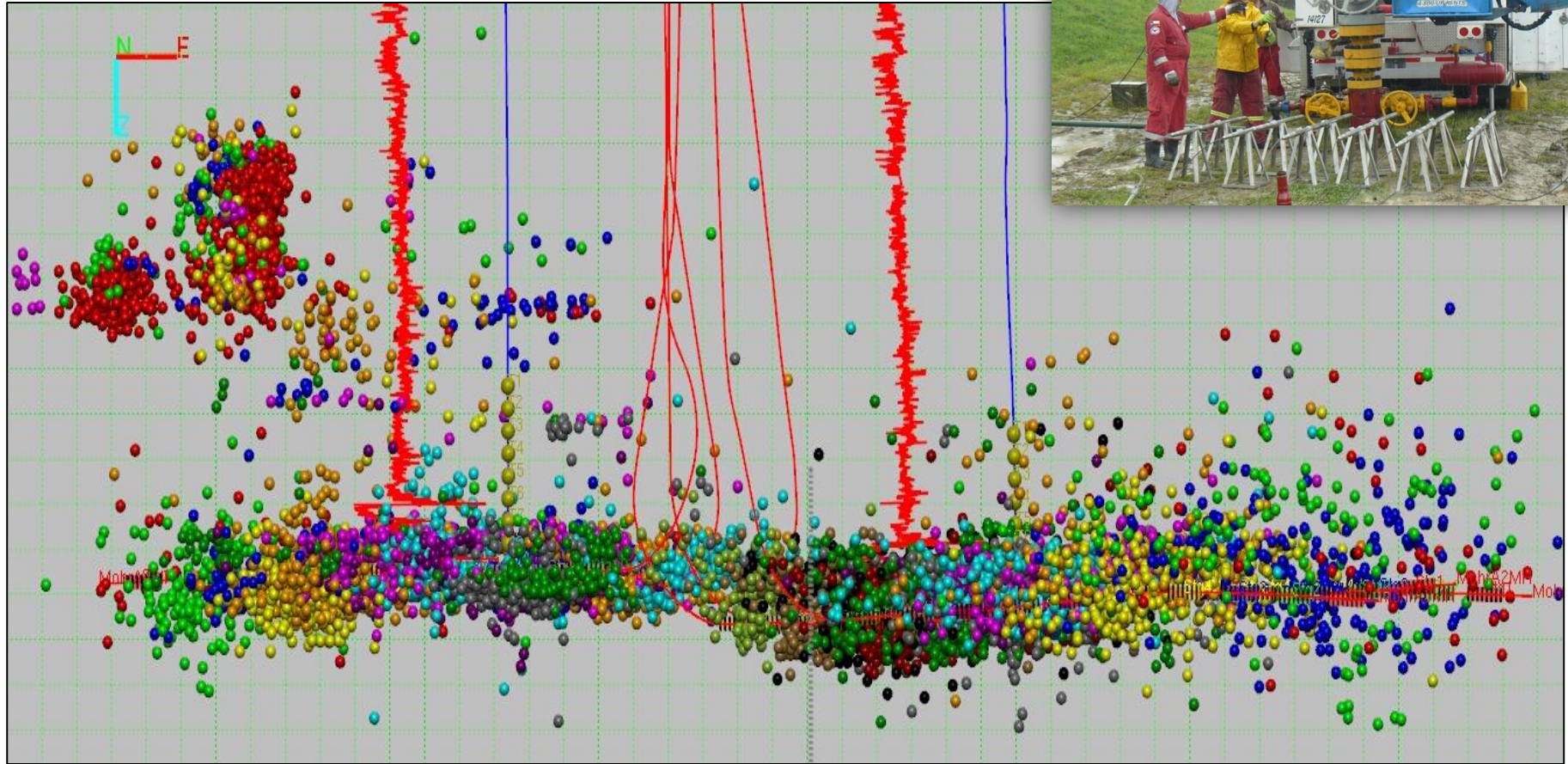


Greene County Site





Microseismic Monitoring of Fracture Height Growth



Ambient Air Quality

