 U.S. Department of Labor  
Mine Safety and Health Administration

## MNM FATAL ACCIDENTS

April 7 - May 4, 2009

### Accidents can be prevented



Victim was in an excavated ditch. A concrete box was being lowered into the ditch when the rigging broke and the box fell on him.

**PREVENTION: Stay clear of a suspended load. Inspect and use proper size rigging. Use taglines when positioning loads.**



Victim exited front-end loader to check dump hopper. He was run over by the left rear tire.

**PREVENTION: Set the park brake, place the bucket on the ground and place chock under wheels.**



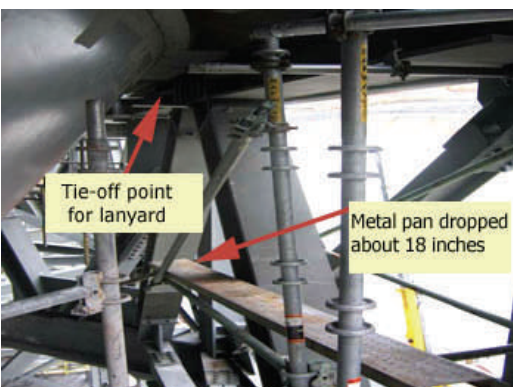
Victim's arm was pulled into a winch that was being used to position the dredge hose.

**PREVENTION: Inspect hoist before using to confirm proper reeling. Block equipment against motion before making repairs or adjustments. Install a control switch near the winch.**



Victim was attempting to connect a 4160 volt cable from the dredge to the load side terminals in electrical panel when he contacted energized terminals.

**PREVENTION: De-energize, lockout and tag the circuit.**



Victim was dismantling scaffold. The scaffold shifted and he lost his balance and fell. As he fell, his safety lanyard slipped off the end of the tie off point.

**PREVENTION: Securely attach fall protection lanyard to a safe structure.**

#### 9 Fatal Accidents 2009 YTD

- Falling Material 3
- Machinery 3
- Electrical 1
- Fall of Person 1
- Powered Haulage 1

***Follow basic safe job procedures***

***Stop, Look, Analyze and Manage (SLAM)***

***PREVENT Accidents and Fatalities!***