



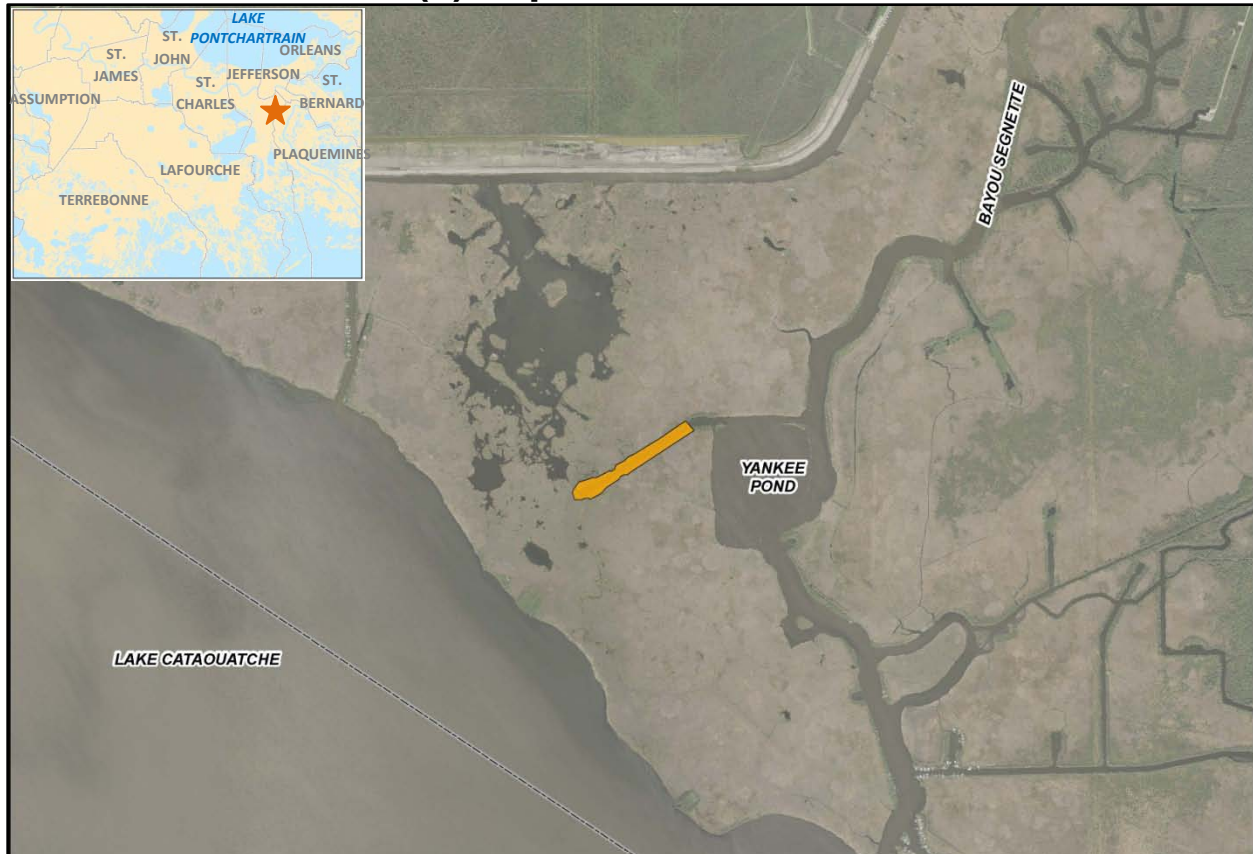
FACT SHEET: WBV HSDRRS MITIGATION

14 AUGUST 2012

U.S. ARMY CORPS OF ENGINEERS

BUILDING STRONG®

Park/404(c) Impacts – Jean Lafitte Marsh



Project Purpose

The purpose of this project is to mitigate for the unavoidable impacts incurred to fresh marsh habitat at the Jean Lafitte National Historical Park & Preserve during construction of the Hurricane & Storm Damage Risk Reduction System.

Project Location

This project is located within the Jean Lafitte National Park on the west bank of Jefferson Parish, Louisiana.

Features

Approximately 20 acres of fresh marsh would be restored by filling a canal immediately abutting Yankee Pond in the northern part of Jean Lafitte National Park. The canal would be filled in with dredged material from Lake Cataouatche. This project assumes that natural recruitment would occur and no planting would be required to establish marsh vegetation. Supplemental planting would only occur if the initial vegetation success criteria are not achieved.

For more information, please visit www.nolaenvironmental.gov.

U.S. ARMY CORPS OF ENGINEERS – NEW ORLEANS DISTRICT

7400 LEAKE AVE., NEW ORLEANS, LA 70118

WWW.MVN.USACE.ARMY.MIL

www.facebook.com/usacenola

www.twitter.com/teamneworleans

www.flickr.com/teamneworleans