



PUBLIC NOTICE

Federal Communications Commission
445 12th St., S.W.
Washington, D.C. 20554

News media information 202 / 418-0500
Fax-On-Demand 202 / 418-2830
TTY 202 / 418-2555
Internet: <http://www.fcc.gov>
<ftp.fcc.gov>

DA 09-664
March 24, 2009

WIRELESS TELECOMMUNICATIONS BUREAU ACTION

WIRELESS TELECOMMUNICATIONS BUREAU RELEASES COMMERCIAL OPERATOR LICENSE EXAMINATION (COLE) QUARTERLY STATISTICAL REPORTS AND ANNUAL FINANCIAL REPORTS FOR 2004-2008

By this action, the Wireless Telecommunications Bureau's Mobility Division¹ releases the 2004-2008 Quarterly COLE Statistical Reports (Statistical Reports) and the 2004-2008 Annual COLE Financial Reports. On January 14, 1993, the Federal Communications Commission (FCC) privatized the examination of applicants for commercial radio operator licenses, and subsequently authorized COLE managers to prepare and administer commercial radio operator license examinations that must be passed by persons in order to be eligible to obtain certain FCC licenses. *See* 47 C.F.R. § 13.209.

The COLE manager system was created to meet the demands of applicants for frequent examination opportunities at convenient locations and of industry for examinations that reflect state of the art technology and contemporary operating conditions. Each COLE manager is authorized to administer examinations nationwide and, in some instances, at foreign

¹ Pursuant to a Commission reorganization effective September 25, 2006, certain duties of the Public Safety and Private Wireless Division were assumed by the Mobility Division. *See* Establishment of the Public Safety and Homeland Security Bureau, *Order*, 21 FCC Rcd 10867 (2006).

sites, and is required to provide a quarterly report to the FCC on the results of the examinations administered.

The Statistical Reports summarize information received from each of the nine COLE managers authorized by the Commission to administer commercial operator examinations. A list of the current COLE managers is attached as Appendix A. (This information is also available on the FCC Commercial Radio Operator website at <http://wireless.fcc.gov/commoperators/index.htm?job=cole>.) The Statistical Reports show that 13,386 examinations were administered to 7,995 individuals in 2004, 11,877 examinations were administered to 7,287 individuals in 2005, 12,593 examinations were administered to 7,388 individuals in 2006, 12,178 examinations were administered to 7,045 individuals in 2007, and 12,627 examinations were issued to 7,232 individuals in 2008. A composite statistical profile and individual statistical profiles for each COLE manager, based on data submitted in their submissions, is attached as Appendix B.²

The 2004-2008 Annual COLE Financial Reports indicate that examinations administered by COLE managers generated \$404,898.85 in revenue in 2004, \$383,783.00 in revenue in 2005, \$391,480.45 in revenue in 2006, \$392,453.90 in revenue in 2007, and \$396,802.00 in revenue in 2008; with examinations prepared and administered at a cost of \$419,237.00 in 2004, \$391,677.00 in 2005, \$406,693.14 in 2006, \$401,709.39 in 2007, and \$409,497.23 in 2008. COLE managers thus operated with an overall net loss of \$14,438.15 in 2004, an overall net loss of \$7,884.00 in 2005, an overall net loss of \$15,212.69 in 2006, an overall net loss of \$9,255.49 in 2007, and an overall net loss of \$12,695.23 in 2008. A composite analysis indicating the revenues and costs of COLE managers associated with preparing and administering the examinations is attached as Appendix C.

Questions regarding this public notice may be directed to Mr. Scot Stone, Mobility Division, Wireless Telecommunications Bureau at (202) 418-0638, Scot.Stone@fcc.gov.

Action by the Deputy Chief, Mobility Division, Wireless Telecommunications Bureau.

- FCC -

² Due to space limitations, Appendices B and C set forth data only from the years 2004-2008. Data from earlier years can be found in prior public notices. *See, e.g.*, Wireless Telecommunications Bureau Releases Commercial Operator License Examination (COLE) Quarterly Statistical Reports and Annual Financial Report for 2002 & 2003, *Public Notice*, 19 FCC Rcd 22471 (WTB PSCID 2004).

Commercial Operator License Examination (COLE) Managers

BFT Training Unlimited

P. O. Box 2677, Santa Rosa, CA 95405 Contact: J. David Byrd (800) 821-0906 or (707) 792-5678, info@elkinstraining.com.

Electronic Technicians Association International, Inc.

5 Depot Street, Greencastle, IN 46135 Contact: Teresa Maher (800) 288-3824 or (765) 653-4301, eta@eta-i.org.

Elkins International, Inc.

P. O. Box 797666, Dallas, TX 75379 Contact: Laura Elkins (888) 621-8876, elkins@eitn.com.

International Society of Certified Electronics Technicians

3608 Pershing Avenue, Fort Worth, TX 76107-4527 Contact: Ed Clingman (817) 921-9101, ed@iscet.org.

LaserGrade Computer Testing, Inc.

16821 SE McGillivray, Suite 201, Vancouver, WA 98683 Contact: Linda Small (800) 211-2753 or (360) 859-1277, linda.small@lasergrade.com.

Marine Technical Institute

1915 S. Andrews Avenue, Fort Lauderdale, FL 33316 Contact: Jack Krantz (954) 525-1014, info@MPTUSA.com.

International Association of Radio, Telecommunications and Electromagnetics

840 Queen St., New Bern, NC 28560 Contact: Brian Lawrence (800) 89-NARTE or (252) 672-0200, lawrence@inarte.us.

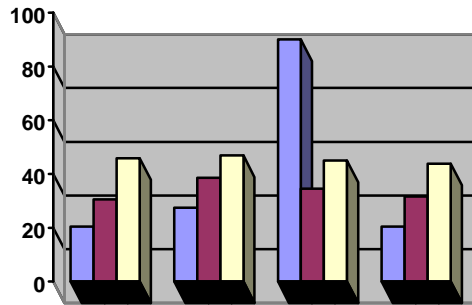
National Radio Examiners

P. O. Box 565206, Dallas, TX 75356-5206 Contact: Larry Pollock (817) 860-3800, colem@radioexaminers.com.

Sea School

8440 4th Street, N., St. Petersburg, FL 33702 Contact: Mary Foster (800) 237-8863, hqstaff@seaschool.com.

Commercial Operator License Examinations



Quarterly Public Service Statistical Reports

(2004–2008)

(Appendix B)

Quarterly Public Service Activity Report

-Acronyms, Terminologies, and Explanations-

COLE: Commercial Operator License Examination

QPSAR: Quarterly Public Service Activity Report

Sessions: The number of times within a quarter exams are administered by a COLE manager.

The four statistical reporting periods for COLE managers are:

1st Quarter: January – March (The 1st QPSAR is due April 15)

2nd Quarter: April – June (The 2nd QPSAR is due July 15)

3rd Quarter: July – September (The 3rd QPSAR is due October 15)

4th Quarter: October – December (The 4th QPSAR is due January 15)

All reports should be filed with:

Mobility Division, Wireless Telecommunications Bureau, FCC, Washington, D.C. 20554

Commercial Radio Operator License Examination (COLE) Statistical Report
(2004 - 2007)

Commercial Operator				2004	2005	2006	2007	2008	TOTAL
License Examination			Examinees	7,995	7,287	7,388	7,045	7,232	36,947
(COLE) Managers'			Written Element 1	6338	5643	6041	5992	6134	30,148
Quarterly Public Service			Passed	6059	5326	5790	5744	5940	28,859
Activity Report (QPSAR)			Rate	96%	94%	96%	96%	97%	96%
Summary Page			Written Element 3	3861	3391	3227	3060	3152	16,691
			Passed	3331	3039	2810	2634	2981	14,795
			Rate	86%	90%	87%	86%	95%	89%
		No. of	Written Element 5	50	37	25	19	21	152
2004	Sessions		Passed	45	34	22	18	20	139
1st Quarter	991		Rate	90%	92%	88%	95%	95%	91%
2nd Quarter	1,101		Written Element 6	46	33	21	18	16	134
3rd Quarter	802		Passed	42	31	21	17	14	125
4th Quarter	814		Rate	91%	94%	100%	94%	88%	93%
TOTAL	3,708		Written Element 7	743	590	1137	1094	1185	4,749
			Passed	636	516	1031	995	967	4,145
			Rate	86%	87%	91%	91%	82%	87%
2005			Written Element 7R	0	5	0	2	3	9
1st Quarter	936		Passed	0	5	0	2	3	9
2nd Quarter	1,005		Rate	n/a	100%	n/a	100%	100%	100%
3rd Quarter	634		Written Element 8	2158	1984	1960	1838	1949	9,889
4th Quarter	699		Passed	2066	1906	1842	1738	1854	9,406
TOTAL	3,274		Rate	96%	96%	94%	95%	95%	95%
2006			Written Element 9	176	183	144	135	158	796
1st Quarter	956		Passed	160	169	133	125	149	736
2nd Quarter	999		Rate	91%	92%	92%	93%	94%	92%
3rd Quarter	736		Telegraphy EI 1	5	7	15	9	3	39
4th Quarter	839		Passed	4	5	6	7	3	25
TOTAL	3,530		Rate	80%	71%	40%	78%	100%	64%
			Telegraphy EI 2	7	9	16	11	6	49
2007			Passed	5	6	9	9	6	35
1st Quarter	356		Rate	71%	67%	56%	82%	100%	71%
2nd Quarter	889		Telegraphy EI 3	1	0	4	3	0	8
3rd Quarter	800		Passed	1	0	4	3	0	8
4th Quarter	924		Rate	100%	n/a	100%	100%	n/a	100%
TOTAL	2,969		Telegraphy EI 4	1	0	3	2	0	6
			Passed	1	0	3	2	0	6
			Rate	100%	n/a	100%	100%	n/a	100%
2008									
1st Quarter	824								
2nd Quarter	945								
3rd Quarter	747								
4th Quarter	846								
TOTAL	3,362								
TOTAL 2004-08	16,843								

Commercial Radio Operator License Examination (COLE) Statistical Report
(2004 - 2007)

BFT Training Unlimited, Inc.			2004	2005	2006	2007	2008	TOTAL
		Examinees	1248	1205	1162	1333	1269	6217
		Written Element 1	1013	936	919	934	917	4719
		Passed	1009	921	887	911	901	4629
	No. of	Rate	100%	98%	97%	98%	98%	98%
2004	Sessions	Written Element 3	744	661	621	563	558	3147
1st Quarter	70	Passed	698	641	600	540	542	3021
2nd Quarter	104	Rate	94%	97%	97%	96%	97%	96%
3rd Quarter	101	Written Element 5	18	14	8	4	3	47
4th Quarter	49	Passed	16	14	8	4	3	45
TOTAL	324	Rate	89%	100%	100%	100%	100%	96%
		Written Element 6	16	14	7	5	3	45
		Passed	15	14	7	5	3	44
		Rate	94%	100%	100%	100%	100%	98%
2005		Written Element 7	90	129	120	119	121	579
1st Quarter	78	Passed	86	126	110	107	110	539
2nd Quarter	71	Rate	96%	98%	92%	90%	91%	93%
3rd Quarter	57	Written Element 8	450	272	469	398	431	2020
4th Quarter	63	Passed	441	271	463	389	424	1988
TOTAL	269	Rate	98%	100%	99%	98%	98%	98%
		Written Element 9	34	25	16	22	12	109
2006		Passed	34	25	16	22	12	109
1st Quarter	75	Rate	100%	100%	100%	100%	100%	100%
2nd Quarter	64	Telegraphy EI 1	12	7	12	4	0	35
3rd Quarter	61	Passed	12	5	4	3	0	24
4th Quarter	58	Rate	100%	71%	33%	75%	n/a	69%
TOTAL	258	Telegraphy EI 2	12	6	10	4	0	32
		Passed	12	5	4	2	0	23
2007		Rate	100%	83%	40%	50%	n/a	72%
1st Quarter	61	Telegraphy EI 3	0	0	1	2	0	3
2nd Quarter	99	Passed	0	0	1	2	0	3
3rd Quarter	69	Rate	n/a	n/a	100%	100%	n/a	100%
4th Quarter	69	Telegraphy EI 4	0	0	0	2	0	2
TOTAL	298	Passed	0	0	0	2	0	2
		Rate	n/a	n/a	n/a	100%	n/a	100%
2008								
1st Quarter	81							
2nd Quarter	82							
3rd Quarter	55							
4th Quarter	71							
TOTAL	289							
TOTAL 2004-08	1,438							

Commercial Radio Operator License Examination (COLE) Statistical Report
(2004 - 2007)

<i>Elkins International, Inc.</i>				2004	2005	2006	2007	2008	TOTAL
			Examinees	941	804	919	1082	1026	4772
			Written Element 1	803	683	791	1008	873	4158
			Passed	793	672	774	994	857	4090
	No. of		Rate	99%	98%	98%	97%	98%	98%
2004	Sessions		Written Element 3	235	238	266	428	295	1462
1st Quarter	85		Passed	217	223	234	416	283	1373
2nd Quarter	82		Rate	92%	94%	88%	97%	96%	94%
3rd Quarter	52		Written Element 5	0	1	0	0	0	1
4th Quarter	58		Passed	0	1	0	0	0	1
TOTAL	277		Rate	n/a	100%	n/a	n/a	n/a	100%
			Written Element 6	0	1	0	0	1	2
			Passed	0	1	0	0	1	2
			Rate	n/a	100%	n/a	n/a	100	100%
2005			Written Element 7	131	119	188	178	193	809
1st Quarter	59		Passed	105	95	132	147	156	635
2nd Quarter	82		Rate	80%	80%	70%	83%	81%	78%
3rd Quarter	54		Written Element 8	131	194	222	360	212	1119
4th Quarter	45		Passed	126	182	211	354	207	1080
TOTAL	240		Rate	96%	94%	95%	98%	98%	97%
2006			Written Element 9	6	8	5	7	4	30
1st Quarter	55		Passed	6	5	5	7	4	27
2nd Quarter	86		Rate	100%	63%	100%	100%	100%	90%
3rd Quarter	51		Telegraphy EI 1						
4th Quarter	56		Passed						
TOTAL	248		Rate						
2007			Telegraphy EI 2						
1st Quarter	86		Passed						
2nd Quarter	97		Rate						
3rd Quarter	71		Telegraphy EI 3						
4th Quarter	78		Passed						
TOTAL	332		Rate						
2008			Telegraphy EI 4						
1st Quarter	88		Passed						
2nd Quarter	91		Rate						
3rd Quarter	81								
4th Quarter	59								
TOTAL	319								
TOTAL 2004-08	1,416								

Commercial Radio Operator License Examination (COLE) Statistical Report
(2004 - 2007)

Electronic Technicians				2004	2005	2006	2007	2008	TOTAL
Association, International, Inc.			Examinees	816	558	691	740	785	3590
			Written Element 1	672	514	665	670	685	3206
			Passed	551	459	604	616	642	2872
			Rate	82%	89%	91%	92%	94%	90%
	No. of		Written Element 3	297	288	387	313	438	1723
2004	Sessions		Passed	251	246	345	258	387	1487
1st Quarter	116		Rate	85%	85%	89%	82%	88%	86%
2nd Quarter	89		Written Element 5	3	2	5	3	3	16
3rd Quarter	92		Passed	3	2	5	2	3	15
4th Quarter	93		Rate	100%	100%	100%	67%	100%	94%
TOTAL	390		Written Element 6	3	2	4	2	2	13
			Passed	3	2	4	1	2	12
			Rate	100%	100%	100%	50%	100%	92%
2005			Written Element 7	150	23	82	86	84	425
1st Quarter	94		Passed	148	23	80	85	81	417
2nd Quarter	109		Rate	99%	100%	98%	99%	96%	98%
3rd Quarter	80		Written Element 7R	0	0	0	1	1	2
4th Quarter	75		Passed	0	0	0	1	1	2
TOTAL	358		Rate	n/a	n/a	n/a	100%	100%	100%
2006			Written Element 8	110	136	184	135	293	858
1st Quarter	104		Passed	106	130	181	124	276	817
2nd Quarter	124		Rate	96%	96%	98%	92%	94%	95%
3rd Quarter	102		Written Element 9	20	22	12	19	39	112
4th Quarter	92		Passed	20	21	11	14	35	101
TOTAL	422		Rate	100%	95%	92%	74%	90%	90%
			Telegraphy EI 1	2	0	1	0	2	5
2007			Passed	2	0	1	0	2	5
1st Quarter	103		Rate	100%	n/a	100%	n/a	100%	100%
2nd Quarter	111		Telegraphy EI 2	2	0	1	0	2	5
3rd Quarter	119		Passed	2	0	1	0	2	5
4th Quarter	112		Rate	100%	n/a	100%	n/a	100%	100%
TOTAL	445		Telegraphy EI 3	1	0	3	0	0	4
			Passed	1	0	3	0	0	4
2008			Rate	100%	n/a	100%	n/a	n/a	100%
1st Quarter	84		Telegraphy EI 4	1	0	3	0	0	4
2nd Quarter	120		Passed	1	0	3	0	0	4
3rd Quarter	100		Rate	100%	n/a	100%	n/a	n/a	100%
4th Quarter	107								
TOTAL	411								
TOTAL 2004-08	2,026								

Commercial Radio Operator License Examination (COLE) Statistical Report
(2004 - 2007)

<i>International Society Of</i>				2004	2005	2006	2007	2008	TOTAL
Certified Electronic Technicians			Examinees	297	297	363	262	321	1540
			Written Element 1	260	273	271	173	208	1185
			Passed	222	227	239	151	188	1027
			<i>Rate</i>	85%	83%	88%	87%	90%	87%
	No. of		Written Element 3	260	206	268	163	210	1107
2004	Sessions		Passed	196	145	199	112	140	792
1st Quarter	13		<i>Rate</i>	75%	70%	74%	69%	67%	72%
2nd Quarter	17		Written Element 5	0	0	0	1	2	3
3rd Quarter	8		Passed	0	0	0	1	1	2
4th Quarter	11		<i>Rate</i>	n/a	n/a	n/a	100%	50%	67%
TOTAL	49		Written Element 6	0	0	0	2	1	3
			Passed	0	0	0	2	1	3
			<i>Rate</i>	n/a	n/a	n/a	100%	100%	100%
2005			Written Element 7	3	17	3	5	6	34
1st Quarter	17		Passed	2	15	3	5	6	31
2nd Quarter	28		<i>Rate</i>	67%	88%	100%	100%	100%	91%
3rd Quarter	11		Written Element 8	61	39	38	30	36	204
4th Quarter	16		Passed	54	34	36	27	29	180
TOTAL	72		<i>Rate</i>	89%	87%	95%	90%	81%	88%
2006			Written Element 9	7	20	10	7	7	51
1st Quarter	14		Passed	7	18	10	7	7	49
2nd Quarter	21		<i>Rate</i>	100%	90%	100%	100%	100%	96%
3rd Quarter	14		Telegraphy EI 1						
4th Quarter	21		Passed						
TOTAL	70		<i>Rate</i>						
2007			Telegraphy EI 2						
1st Quarter	28		Passed						
2nd Quarter	17		<i>Rate</i>						
3rd Quarter	20		Telegraphy EI 3						
4th Quarter	12		Passed						
TOTAL	77		<i>Rate</i>						
2008			Telegraphy EI 4						
1st Quarter	13		Passed						
2nd Quarter	19		<i>Rate</i>						
3rd Quarter	11								
4th Quarter	20								
TOTAL	63								
TOTAL 2004-08	331								

Commercial Radio Operator License Examination (COLE) Statistical Report
(2004 - 2007)

International Association of Radio, Telecommunications and Electromagnetics				2004	2005	2006	2007	2008	TOTAL
			Examinees	847	755	1086	454	535	3677
			Written Element 1	626	599	603	374	493	2695
			Passed	582	566	552	289	451	2440
			Rate	93%	94%	92%	77%	91%	91%
			Written Element 3	455	403	444	318	349	1969
			Passed	335	309	310	212	245	1411
			Rate	74%	77%	70%	67%	70%	72%
2004	No. of Sessions		Written Element 5	4	8	4	2	2	20
1st Quarter	128		Passed	2	6	1	2	2	13
2nd Quarter	158		Rate	50%	75%	25%	100%	100%	65%
3rd Quarter	118		Written Element 6	4	7	1	2	2	16
4th Quarter	89		Passed	2	6	1	2	2	13
TOTAL	493		Rate	50%	84%	100%	100%	100%	81%
2005			Written Element 7	84	70	84	96	67	401
1st Quarter	111		Passed	71	59	67	72	51	320
2nd Quarter	146		Rate	85%	84%	80%	75%	76%	80%
3rd Quarter	107		Written Element 8	164	180	212	108	153	817
4th Quarter	99		Passed	116	135	126	60	108	545
TOTAL	463		Rate	71%	75%	59%	56%	71%	67%
			Written Element 9	31	32	22	15	31	131
2006			Passed	27	27	15	10	27	106
1st Quarter	95		Rate	87%	84%	68%	67%	87%	81%
2nd Quarter	112		Telegraphy EI 1						
3rd Quarter	99		Passed						
4th Quarter	81		Rate						
TOTAL	387		Telegraphy EI 2						
			Passed						
2007			Rate						
1st Quarter	65		Telegraphy EI 3						
2nd Quarter	10		Passed						
3rd Quarter	72		Rate						
4th Quarter	68		Telegraphy EI 4						
TOTAL	215		Passed						
			Rate						
2008									
1st Quarter	60								
2nd Quarter	79								
3rd Quarter	67								
4th Quarter	76								
TOTAL	282								
TOTAL 2004-08	1,840								

Commercial Radio Operator License Examination (COLE) Statistical Report
(2004 - 2007)

National Radio					2004	2005	2006	2007	2008	TOTAL
Examiners				Examinees	2132	2051	1721	1650	1763	9317
				Written Element 1	1447	1363	1518	1513	1589	7430
				Passed	1414	1236	1504	1484	1560	7198
				Rate	98%	91%	99%	98%	98%	97%
	No. of			Written Element 3	1339	1216	928	884	972	5339
2004	Sessions			Passed	1224	1148	872	818	890	4952
1st Quarter	122			Rate	91%	94%	94%	93%	92%	93%
2nd Quarter	110			Written Element 5	19	9	4	7	9	48
3rd Quarter	101			Passed	18	9	4	7	9	47
4th Quarter	102			Rate	95%	100%	100%	100%	100%	98%
TOTAL	435			Written Element 6	18	8	6	7	5	44
				Passed	17	7	6	7	3	40
				Rate	94%	88%	100%	100%	60%	91%
2005				Written Element 7	188	124	562	494	627	1995
1st Quarter	132			Passed	134	97	545	479	581	1836
2nd Quarter	102			Rate	71%	78%	97%	97%	93%	92%
3rd Quarter	107			Written Element 7R	0	4	0	1	2	7
4th Quarter	97			Passed	0	4	0	1	2	7
TOTAL	438			Rate	n/a	100%	n/a	100%	100%	100%
2006				Written Element 8	996	963	700	671	676	4006
1st Quarter	92			Passed	987	957	692	663	671	3970
2nd Quarter	92			Rate	99%	99%	99%	99%	99%	99%
3rd Quarter	98			Written Element 9	52	42	54	42	38	228
4th Quarter	99			Passed	50	41	52	42	38	223
TOTAL	381			Rate	96%	98%	96%	100%	100%	98%
2007				Telegraphy EI 1	3	0	2	5	1	11
1st Quarter	88			Passed	2	0	1	4	1	8
2nd Quarter	129			Rate	67%	n/a	50%	80%	100%	73%
3rd Quarter	114			Telegraphy EI 2	5	3	5	7	4	24
4th Quarter	125			Passed	3	1	4	7	4	19
TOTAL	456			Rate	60%	33%	80%	100%	100%	79%
2008				Telegraphy EI 3	0	0	0	1	0	1
1st Quarter	121			Passed	0	0	0	1	0	1
2nd Quarter	141			Rate	n/a	n/a	n/a	100%	n/a	100%
3rd Quarter	104			Telegraphy EI 4						
4th Quarter	109			Passed						
TOTAL	475			Rate						
TOTAL 2004-08	2,185									

Commercial Radio Operator License Examination (COLE) Statistical Report
(2004 - 2007)

<i>Sea School</i>					2004	2005	2006	2007	2008	TOTAL
				Examinees	811	785	810	746	812	3964
				Written Element 1	774	706	764	692	751	3687
				Passed	768	700	744	687	738	3637
				<i>Rate</i>	99%	99%	97%	99%	98%	99%
2004	No. of Sessions			Written Element 3	104	100	91	65	83	443
1st Quarter	240			Passed	98	93	88	62	82	423
2nd Quarter	324			<i>Rate</i>	94%	93%	97%	95%	99%	95%
3rd Quarter	142			Written Element 5	1	0	2	1	0	4
4th Quarter	221			Passed	1	0	2	1	0	4
TOTAL	927			<i>Rate</i>	100%	n/a	100%	100%	n/a	100%
				Written Element 6	1	0	1	0	0	2
				Passed	1	0	1	0	0	2
2005				<i>Rate</i>	100%	n/a	100%	n/a	n/a	100%
1st Quarter	263			Written Element 7	5	22	20	12	7	66
2nd Quarter	299			Passed	5	18	19	10	7	59
3rd Quarter	145			<i>Rate</i>	100%	82%	95%	83%	100%	89%
4th Quarter	178			Written Element 7R	0	1	0	0	0	1
TOTAL	885			Passed	0	1	0	0	0	1
				<i>Rate</i>	n/a	100%	n/a	n/a	n/a	100%
2006				Written Element 8	36	45	38	25	41	185
1st Quarter	155			Passed	36	45	38	25	41	185
2nd Quarter	347			<i>Rate</i>	100%	100%	100%	100%	100%	100%
3rd Quarter	181			Written Element 9	6	12	14	6	3	41
4th Quarter	247			Passed	5	11	14	6	3	39
TOTAL	930			<i>Rate</i>	83%	92%	100%	100%	100%	95%
2007				Telegraphy EI 1						
1st Quarter	221			Passed						
2nd Quarter	219			<i>Rate</i>						
3rd Quarter	151			Telegraphy EI 2						
4th Quarter	208			Passed						
TOTAL	799			<i>Rate</i>						
				Telegraphy EI 3						
2008				Passed						
1st Quarter	202			<i>Rate</i>						
2nd Quarter	258			Telegraphy EI 4						
3rd Quarter	177			Passed						
4th Quarter	230			<i>Rate</i>						
TOTAL	867									
TOTAL 2004-08	4,408									

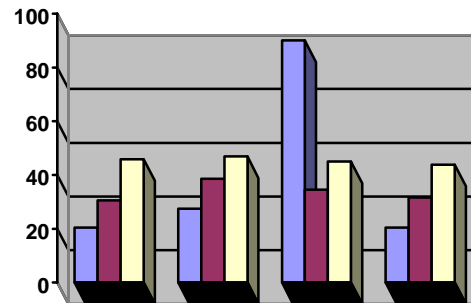
Commercial Radio Operator License Examination (COLE) Statistical Report
(2004 - 2007)

LaserGrade Computer Testing, Inc.			2004	2005	2006	2007	2008	TOTAL
		Examinees	601	563	406	499	458	2527
		Written Element 1	470	338	311	363	379	1861
		Passed	450	316	287	347	366	1766
		Rate	96%	93%	92%	96%	97%	95%
2004	No. of Sessions	Written Element 3	419	273	221	315	238	1466
1st Quarter	201	Passed	304	221	161	205	175	1066
2nd Quarter	203	Rate	73%	81%	73%	65%	74%	73%
3rd Quarter	171	Written Element 5	4	3	2	1	2	12
4th Quarter	174	Passed	4	2	2	1	2	11
TOTAL	749	Rate	100%	67%	100%	100%	100%	92%
		Written Element 6	3	1	2	0	2	8
2005		Passed	3	1	2	0	2	8
1st Quarter	162	Rate	100%	100%	100%	n/a	100	100%
2nd Quarter	149	Written Element 7	19	19	11	13	8	70
3rd Quarter	147	Passed	15	18	8	10	10	61
4th Quarter	108	Rate	79%	95%	73%	77%	80%	87%
TOTAL	566	Written Element 8	204	142	96	106	105	653
		Passed	194	140	94	96	96	620
2006		Rate	95%	99%	98%	91%	91%	95%
1st Quarter	96	Written Element 9	16	15	11	14	19	75
2nd Quarter	143	Passed	16	14	9	14	19	72
3rd Quarter	120	Rate	100%	93%	82%	100%	100%	96%
4th Quarter	174	Telegraphy EI 1						
TOTAL	533	Passed						
		Rate						
2007		Telegraphy EI 2						
1st Quarter	164	Passed						
2nd Quarter	196	Rate						
3rd Quarter	174	Telegraphy EI 3						
4th Quarter	242	Passed						
TOTAL	776	Rate						
		Telegraphy EI 4						
2008		Passed						
1st Quarter	163	Rate						
2nd Quarter	145							
3rd Quarter	143							
4th Quarter	163							
TOTAL	614							
TOTAL 2004-08	3,238							

Commercial Radio Operator License Examination (COLE) Statistical Report
(2004 - 2007)

Marine Technical Institute				2004	2005	2006	2007	2008	TOTAL
	No. of		Examinees	302	269	230	279	263	1343
2004	Sessions		Written Element 1	273	231	199	265	239	1207
1st Quarter	16		Passed	270	229	199	265	237	1200
2nd Quarter	14		Rate	99%	99%	100%	100%	99%	99%
3rd Quarter	17		Written Element 3	8	16	1	11	9	45
4th Quarter	17		Passed	8	13	1	11	7	40
TOTAL	64		Rate	100%	81%	100%	100%	78%	89%
2005			Written Element 5	1	0	0	0	0	1
1st Quarter	20		Passed	1	0	0	0	0	1
2nd Quarter	19		Rate	100%	<i>n/a</i>	<i>n/a</i>	<i>n/a</i>	<i>n/a</i>	100%
3rd Quarter	16		Written Element 6	1	0	0	0	0	1
4th Quarter	18		Passed	1	0	0	0	0	1
TOTAL	73		Rate	100%	<i>n/a</i>	<i>n/a</i>	<i>n/a</i>	<i>n/a</i>	100%
2006			Written Element 7	73	67	67	91	72	370
1st Quarter	12		Passed	70	65	67	80	72	354
2nd Quarter	10		Rate	96%	97%	100%	99%	100%	96%
3rd Quarter	10		Written Element 8	6	13	1	5	2	27
4th Quarter	11		Passed	6	12	1	5	2	26
TOTAL	43		Rate	100%	92%	100%	100%	100%	96%
2007			Written Element 9	4	7	1	3	4	19
1st Quarter	13		Passed	4	7	1	3	4	19
2nd Quarter	11		Rate	100%	100%	100%	100%	100%	100%
3rd Quarter	10		Telegraphy EI 1						
4th Quarter	10		Passed						
TOTAL	44		Rate						
2008			Telegraphy EI 2						
1st Quarter	12		Passed						
2nd Quarter	10		Rate						
3rd Quarter	9		Telegraphy EI 3						
4th Quarter	11		Passed						
TOTAL	42		Rate						
TOTAL 2004-08	266		Telegraphy EI 4						
			Passed						
			Rate						

Commercial Operator License Examinations



Annual Financial Reports

- 2004-2008 -

Annual Financial Report

-Acronyms, Terminologies and Explanations-

The Commercial Operator License Examinations (COLE) Annual Financial Report provides a composite analysis of the costs incurred by COLE managers in preparing and administering the examinations, as well as the cost to examinees.

The “reporting period” for the COLE Annual Financial Report is January 1 through December 31. The Annual Financial Report from each COLE manager must be submitted to the Mobility Division of the Federal Communications Commission’s Wireless Telecommunications Bureau.

For purposes of this Annual Financial Report, the subheadings are defined as follows:

Revenue: The funds, per COLE manager, accumulated during the reporting period.

Expenses: The costs, per COLE manager, associated with preparing and administering the examinations reported during the reporting period.

Rev-Exp (Revenue minus expenses) generally indicates the amount of profit a COLE manager clears during the reporting period. Amounts shown in this column that appear in parenthesis indicate that the COLE manager operated at a loss during the reporting period due to expenses exceeding revenue.

Examinees: Total number of persons examined during the reporting period.

All reports should be filed with:

Mobility Division, Wireless Telecommunications Bureau, FCC, Washington, D.C. 20554

Annual COLE Manager Financial Report

Commercial Operator License Examination (COLE) Managers 2004-2007 Annual Financial Report													
COLE MANAGER	2004 REVENUE	2004 EXPENSES	2004 REV-EXP*	2005 REVENUE	2005 EXPENSES	2005 REV-EXP*	2006 REVENUE	2006 EXPENSES	2006 REV-EXP*	2007 REVENUE	2007 EXPENSES	2007 REV-EXP*	2007 REVENUE
BFT Training Unlimited, Inc.													
Total	\$96,108.00	\$92,882.00	\$3,226.00	\$102,008.00	\$95,396.00	\$6,612.00	\$98,743.00	\$93,008.00	\$5,735.00	\$111,579.00	\$101,953.00	\$9,626.00	\$105,991.00
Examinees	1,248			1,205			1,162			1,333			1,268
per examinee	\$77.01	\$74.42	\$2.58	\$84.65	\$79.17	\$5.49	\$84.98	\$80.04	\$4.94	\$83.71	\$76.48	\$7.22	\$83.44
National Radio Examiners													
Total	\$65,890.00	\$67,569.00	(\$1,679.00)	\$63,970.00	\$62,194.00	\$1,776.00	\$53,929.00	\$52,325.00	\$1,604.00	\$52,175.00	\$50,075.00	\$2,100.00	\$51,651.00
Examinees	2,132			2,051			1,721			1,650			1,761
per examinee	\$30.91	\$31.69	(\$0.79)	\$31.19	\$30.32	\$0.87	\$31.34	\$30.40	\$0.93	\$31.62	\$30.35	\$1.27	\$29.33
Elkins International, Inc.													
Total	\$46,975.00	\$50,811.00	(\$3,836.00)	\$44,100.00	\$47,844.00	(\$3,744.00)	\$49,774.00	\$52,947.00	(\$3,173.00)	\$54,250.00	\$55,179.00	(\$929.00)	\$53,721.00
Examinees	941			804			919			1,082			1,021
per examinee	\$49.92	\$54.00	(\$0.89)	\$54.85	\$59.51	(\$4.66)	\$54.16	\$57.61	(\$3.45)	\$50.14	\$51.00	(\$0.86)	\$52.33
Electronics Technicians Association, International, Inc.													
Total	\$38,179.85	\$45,400.00	(\$7,220.15)	\$31,485.00	\$46,900.00	(\$15,415.00)	\$42,132.00	\$55,945.00	(\$13,813.00)	\$42,648.00	\$58,960.00	(\$16,312.00)	\$43,821.00
Examinees	816			558			691			740			788
per examinee	\$46.79	\$55.64	(\$8.85)	\$56.42	\$84.05	(\$27.63)	\$60.97	\$80.96	(\$19.99)	\$57.63	\$79.68	(\$22.04)	\$55.84
International Association of Radio, Telecommunications and Electromagnetics													
Total	\$34,861.00	\$53,601.00	(\$18,740.00)	\$38,877.00	\$50,410.00	(\$11,533.00)	\$44,469.95	\$56,679.46	(\$12,209.51)	\$33,979.90	\$50,898.30	(\$16,918.40)	\$37,231.00
Examinees	847			755			1,086			454			531
per examinee	\$41.16	\$63.28	(\$22.16)	\$50.82	\$65.90	(\$15.08)	\$40.94	\$52.19	(\$11.24)	\$74.85	\$112.11	(\$37.27)	\$69.33
Sea School													
Total	\$37,775.00	\$35,657.00	\$2,118.00	\$38,670.00	\$34,030.00	\$4,640.00	\$43,279.00	\$38,085.52	\$5,193.48	\$38,060.00	\$33,492.80	\$4,567.20	\$40,681.00
Examinees	811			785			810			746			812
per examinee	\$46.58	\$43.97	\$2.61	\$49.26	\$43.35	\$5.91	\$53.43	\$47.02	\$6.41	\$51.02	\$44.90	\$6.12	\$50.14
International Society of Certified Electronic Technicians													
Total	\$17,105.00	\$19,322.00	(\$2,317.00)	\$20,165.00	\$17,113.00	\$3,052.00	\$20,337.50	\$21,265.16	(\$927.66)	\$13,840.00	\$12,413.79	\$1,426.21	\$16,011.00
Examinees	297			297			363			262			321
per examinee	\$57.59	\$65.06	(\$7.80)	\$67.90	\$57.62	\$10.28	\$56.03	\$58.58	(\$2.56)	\$52.82	\$47.38	\$5.44	\$49.88
LaserGrade Computer Testing, Inc.													
Total	\$56,910.00	\$42,935.00	\$13,975.00	\$31,760.00	\$25,621.00	\$6,139.00	\$27,120.00	\$23,335.00	\$3,785.00	\$33,760.00	\$24,627.50	\$9,132.50	\$32,671.00
Examinees	601			563			406			499			458
per examinee	\$94.69	\$71.44	\$23.25	\$56.41	\$45.51	\$10.90	\$66.80	\$57.48	\$9.32	\$67.66	\$49.35	\$18.30	\$71.33
Marine Technical Institute													
Total	\$11,095.00	\$11,060.00	\$35.00	\$12,758.00	\$12,169.00	\$589.00	\$11,696.00	\$13,103.00	(\$1,407.00)	\$12,162.00	\$14,110.00	(\$1,948.00)	\$15,001.00
Examinees	302			269			230			279			263
per examinee	\$36.74	\$36.62	\$0.12	\$47.43	\$45.24	\$2.19	\$50.85	\$56.97	(\$6.12)	\$43.59	\$50.57	(\$6.98)	\$57.03
Totals	\$404,898.85	\$419,237.00	(\$14,438.15)	\$383,793.00	\$391,677.00	(\$7,884.00)	391,480.45	406,693.14	(15,212.69)	\$392,453.90	\$401,709.39	(\$9,255.49)	\$396,801.00
Examinees	7,995			7,287			7,388			7,045			7,233
per examinee	\$50.64	\$50.80	(\$0.17)	\$52.67	\$53.75	(\$1.08)	\$52.99	\$55.05	(\$2.06)	\$55.71	\$57.02	(\$1.31)	\$54.84
*Amounts in parentheses are negative (loss)													