

# How to Find and Graph NERRS Data

Updated 6/21/2010

1) Go to [www.nerrsdata.org](http://www.nerrsdata.org)



2) Click on the map where it says:

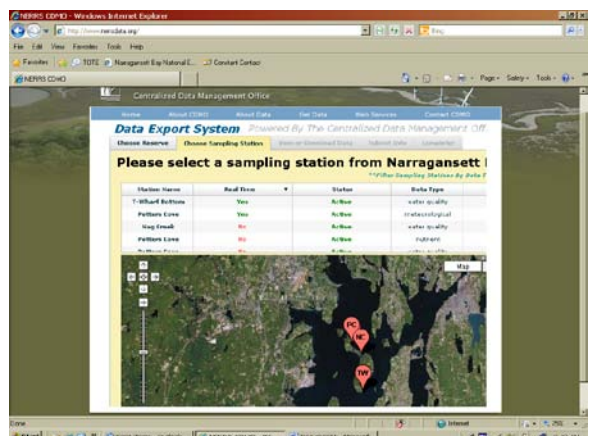
**View/Download Data**

3) The page will take a few moments to load.

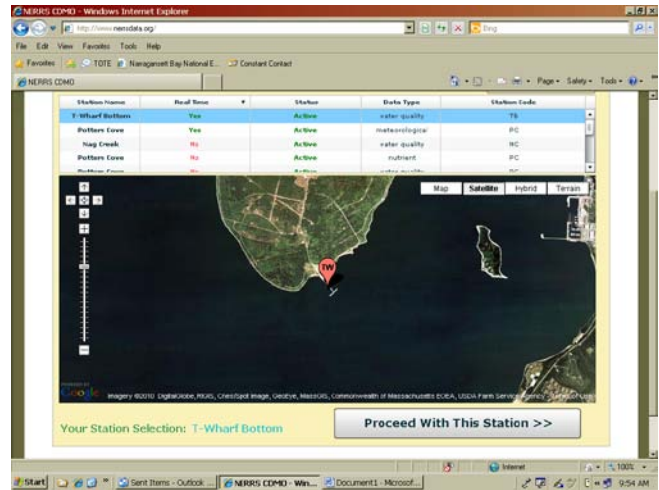
4) Once the page has loaded you will come to a map of the US showing all 27 reserves. Select the reserve from which you want to collect data.



5) For this tutorial, Narragansett Bay Research Reserve will be used. Once you have selected a reserve you will come to a website showing a Google satellite image.



6) From the list of stations at the top of the page you can select different sample sites. For this example, select T-Wharf Bottom and click the **“Proceed With This Station”** button in the lower right corner.



7) Once you come to the next page you will see a **“Current Conditions”** box if the sample site you choose has real time capabilities, as the T-Wharf Bottom does.

**Data Export System** Powered By The Centralized Data Management Office

Choose Reserve    Choose Sampling Station    **View or Download Data**    Submit Info    Complete!

**Select how to view or download the data below:**

- Yearly Files (1995-2006) --**  
Yearly Files are files that have been authenticated by the CDMO and do not include [provisional or provisional plus data](#).
- Export Data (1995-Present) --**  
Select this option to export data from a custom date range to include [authenticated, provisional, and/or provisional plus data](#).
- Graph Data --**  
Choose this option to graph a parameter from any date range.
- Current Conditions --**  
Choose this option to view current conditions for your selected station and Reserve.

**Current Conditions**

Map    **Satellite**    Hybrid    Terrain

Imagery ©2010 DigitalGlobe, RIGIS, Cnes/Spot Image, GeoEye, MassGIS, Commonwealth of Massachusetts EOE, USDA Farm Service Agency - Terms of Use

**T-Wharf Bottom Current Conditions**

**Latest Timestamp: 06/21/2010 07:45**

**Water Temperature: 18.5 °C (65°F)**

**Salinity: 33.2 PPT**

**Turbidity: 1 NTU**

**Specific Conductivity: 50.49 mS/cm**

**Dissolved Oxygen: 7.5 mg/L**

**Percent Saturation: 97.3 %**

**pH: 8.0 Units**

**Depth: 4.88 m (16.0 ft.)**

8) Depending on whether you want to download raw data or make graphs the next steps will vary:

a. To **GRAPH** the data, select the “Graph Data” option at the top of the window. Along the top of the purple box you can select a time frame and parameter for the data

you want to graph.

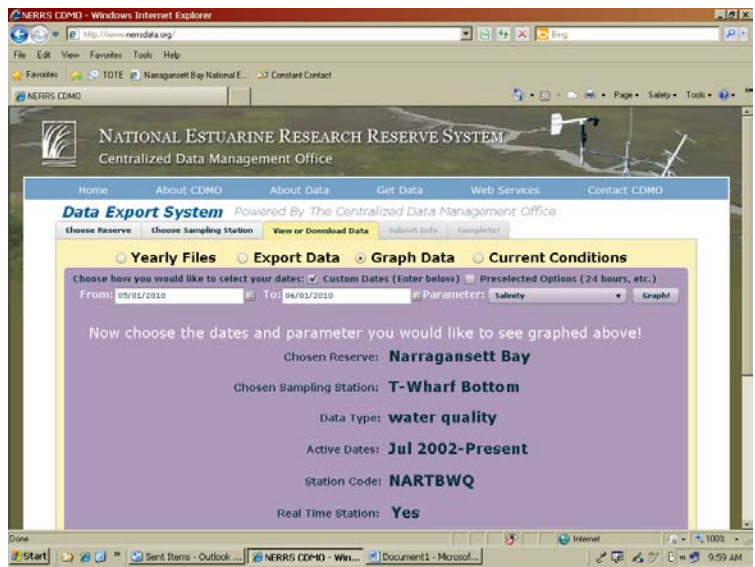
(For this example we

will use data from

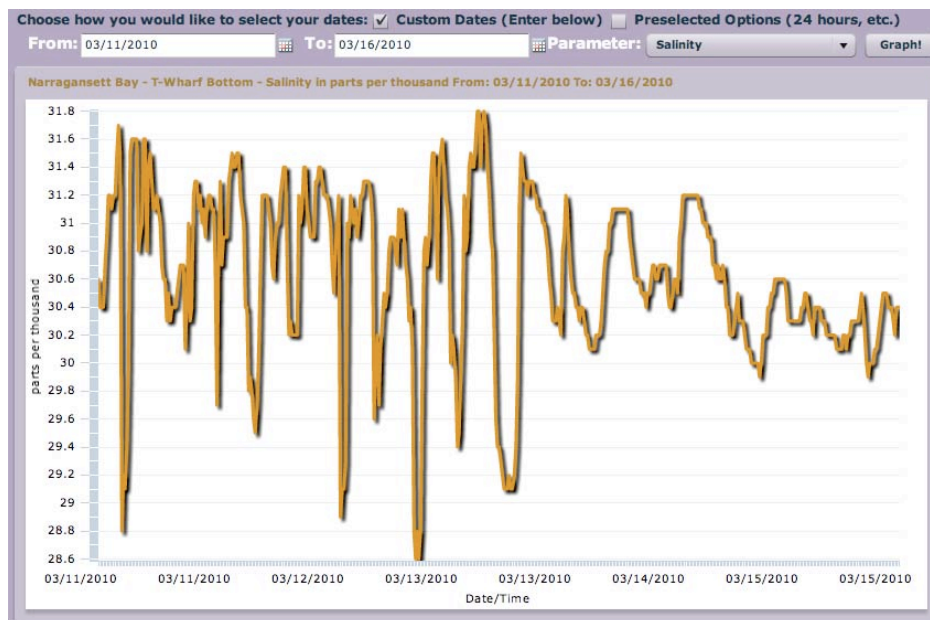
3/11/2010 – 3/16/2010

and will graph salinity

at T-Wharf Bottom.)

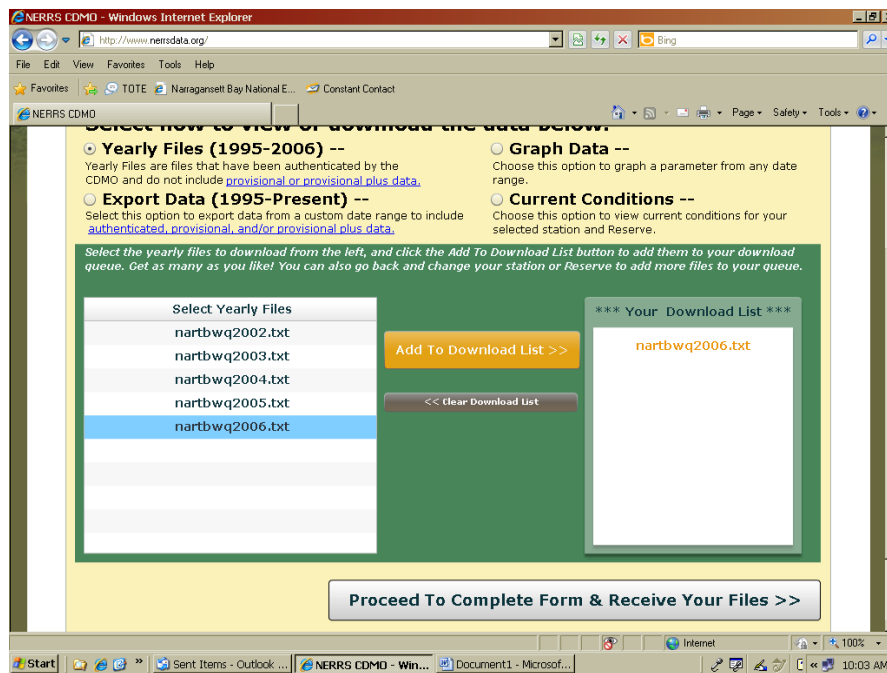


Once you have made your selections click the “**Graph!**” button in the upper right. A graph will be generated that looks like the one below. If you want to change the variable being graphed or the time frame, simply change the selected fields and click “**Graph!**” again.

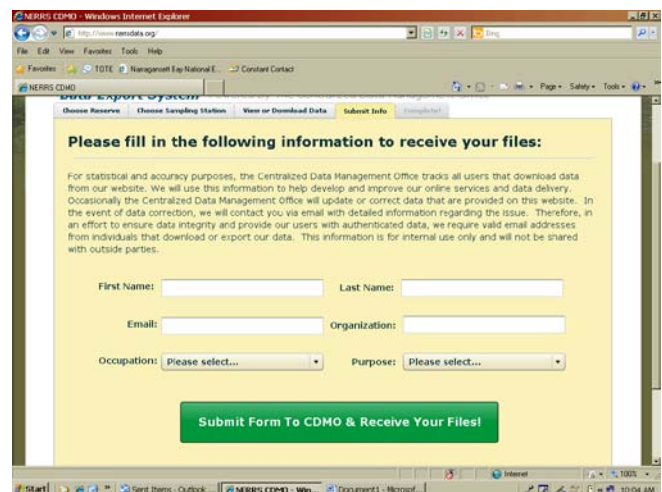


b. If you want **RAW DATA** to work with in a program like Excel, you will select either “**Yearly Files**” or “**Export Data**”

i. For “**Yearly Files**” you will select the year from which you want your data; then click the “**Add to Download List**” button. Once it is in the Download List you can click the “**Proceed To Complete Form & Receive Your Files**” button.



You will come to a page that requires you to fill in some information before you can download the data.\* Once this form is filled in, click the large green button and your data will download.



- ii. If you want to **Export Data** you will select the correct button and be directed to the web page below. Fill in the appropriate information and click the gray “Proceed” button on the bottom. You will be required to fill in the same form as you were to download the data.\*  
Once the form is completed you will be able to export the data.

The screenshot shows a Windows Internet Explorer browser window displaying the NERRS CDMO website. The page is titled "NERRS CDMO" and contains a form for exporting data. The form is divided into several sections:

- Export Data (1995-Present) --**: This section is selected with a radio button. It includes a note: "Select this option to export data from a custom date range to include authenticated, provisional, and/or provisional plus data." Below this are two date pickers labeled "From:" and "To:".
- Current Conditions --**: This option is unselected. It includes a note: "Choose this option to view current conditions for your selected station and Reserve."
- Select the export date range below:**: This section contains a checked checkbox for "Custom Dates" and an unchecked checkbox for "Preset Option".
- Select Your Dataset Type**: This section contains a checked checkbox for "Best Available Dataset" and an unchecked checkbox for "All Inclusive Dataset".
- Sampling Station Info**: This section displays the following information:
  - Reserve: Narragansett Bay
  - Chosen Station: T-Wharf Bottom
  - Data Type: water quality
  - Station Code: NARTBWQ
  - Active Dates: Jul 2002-Present
  - Real Time: Yes

At the bottom of the form is a large gray button labeled "Proceed To Complete Form & Receive Your Files >>".

\*Please note, your information is only requested for statistical and accuracy purposes. The information is for internal use only and will not be shared with outside partners.