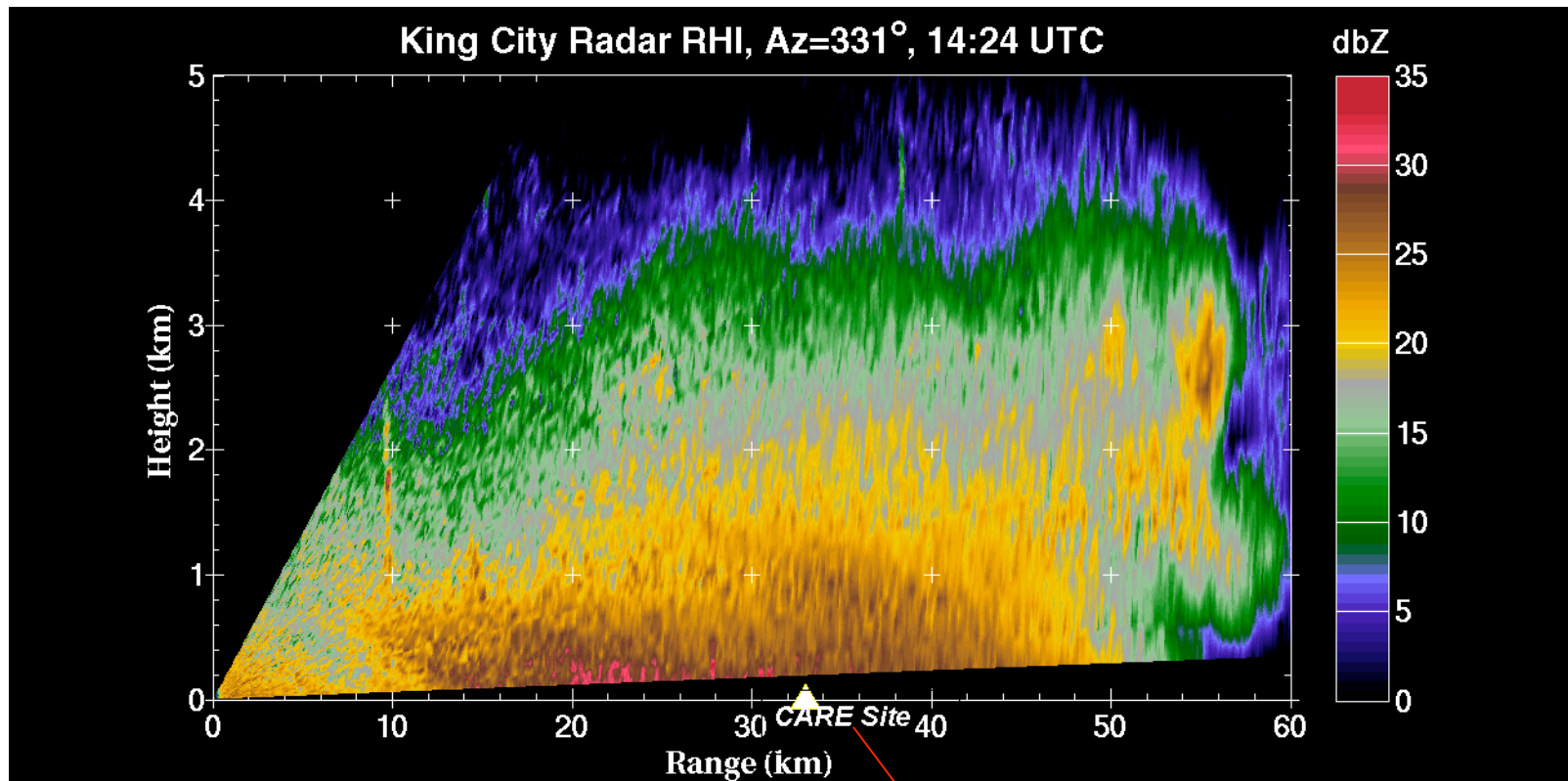
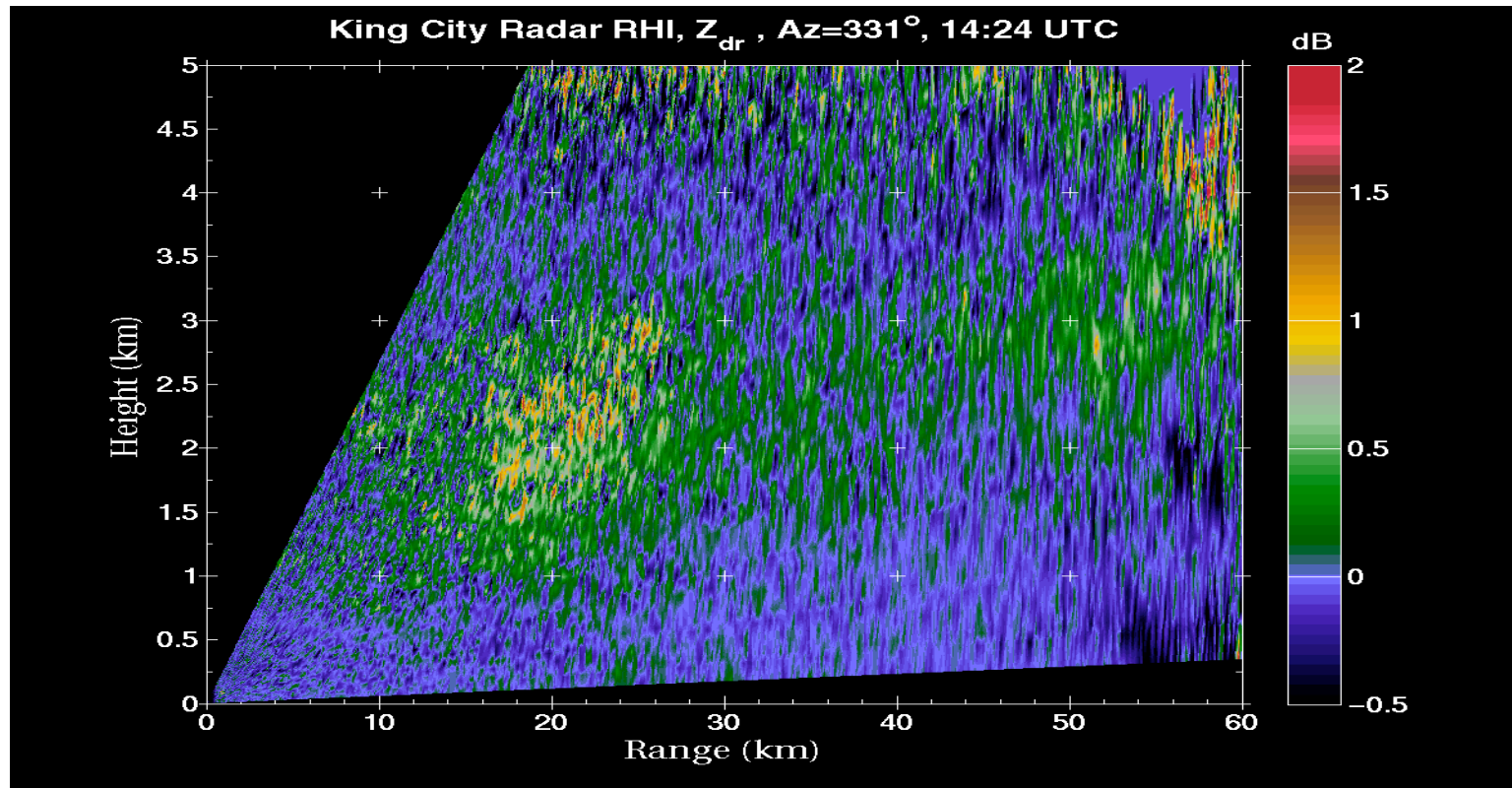


RHI of Reflectivity (Zh) from King City Radar over CARE site at 14:24 UTC on 6 Dec 2006

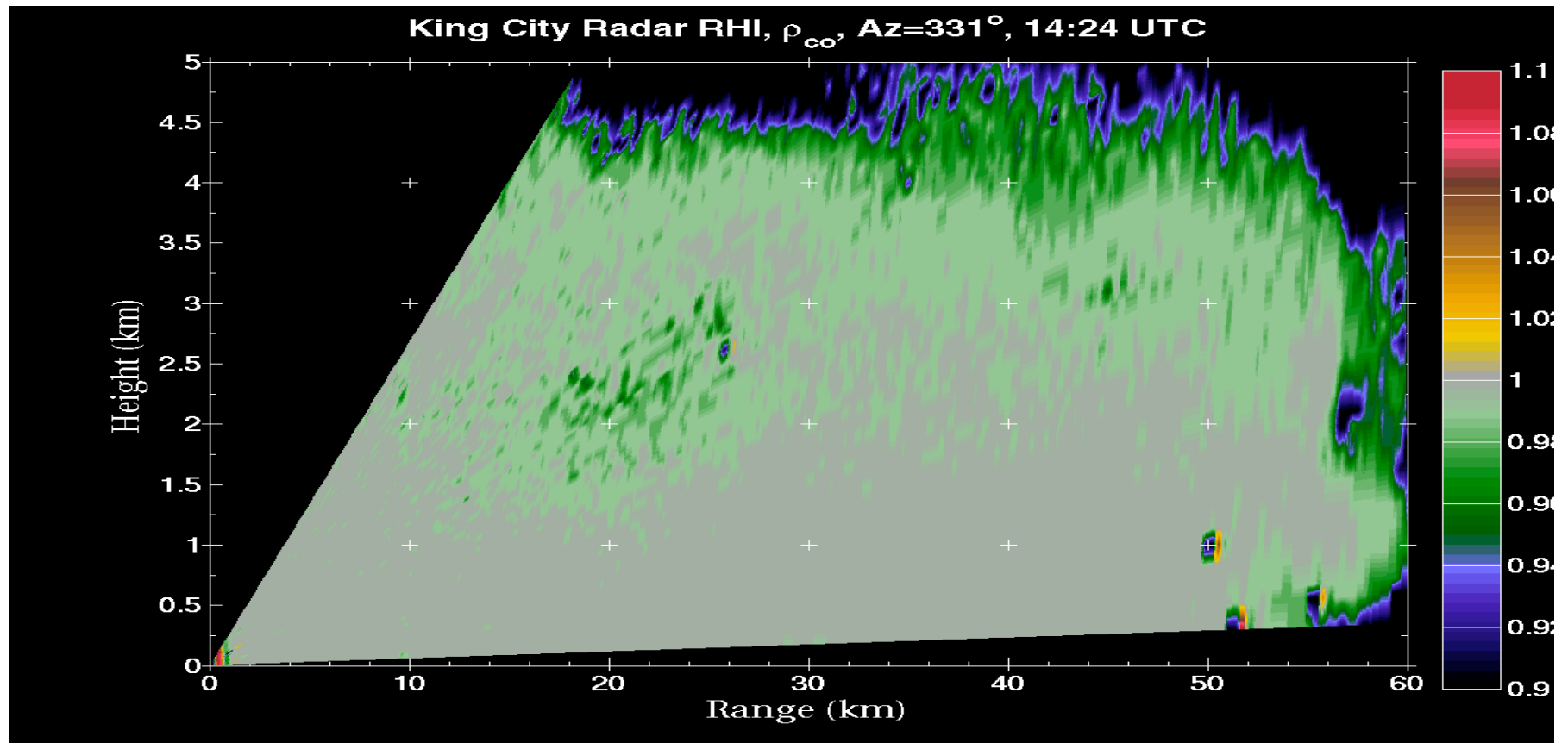


CARE site

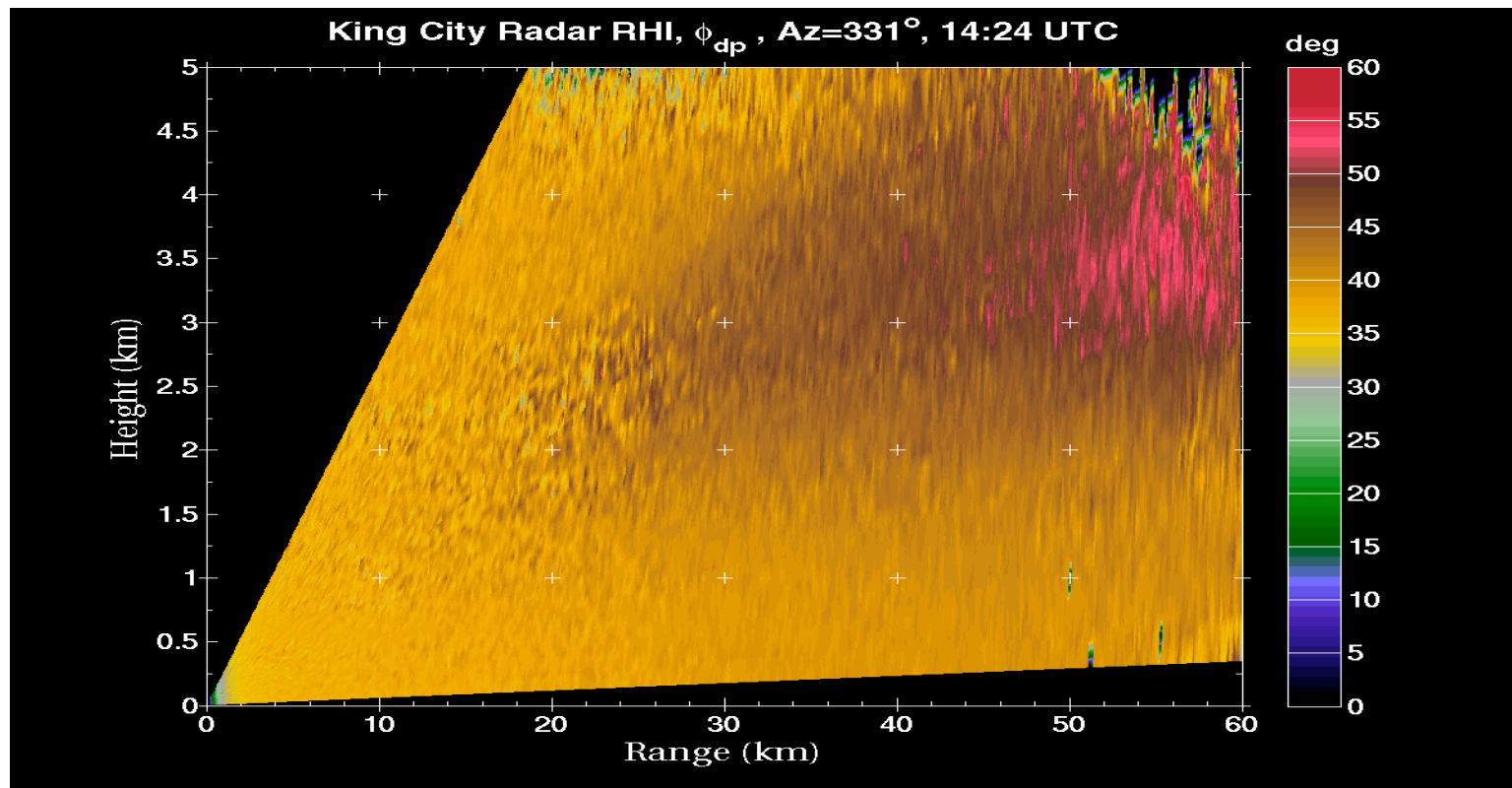
RHI scan of Differential Reflectivity, Z_{dr}



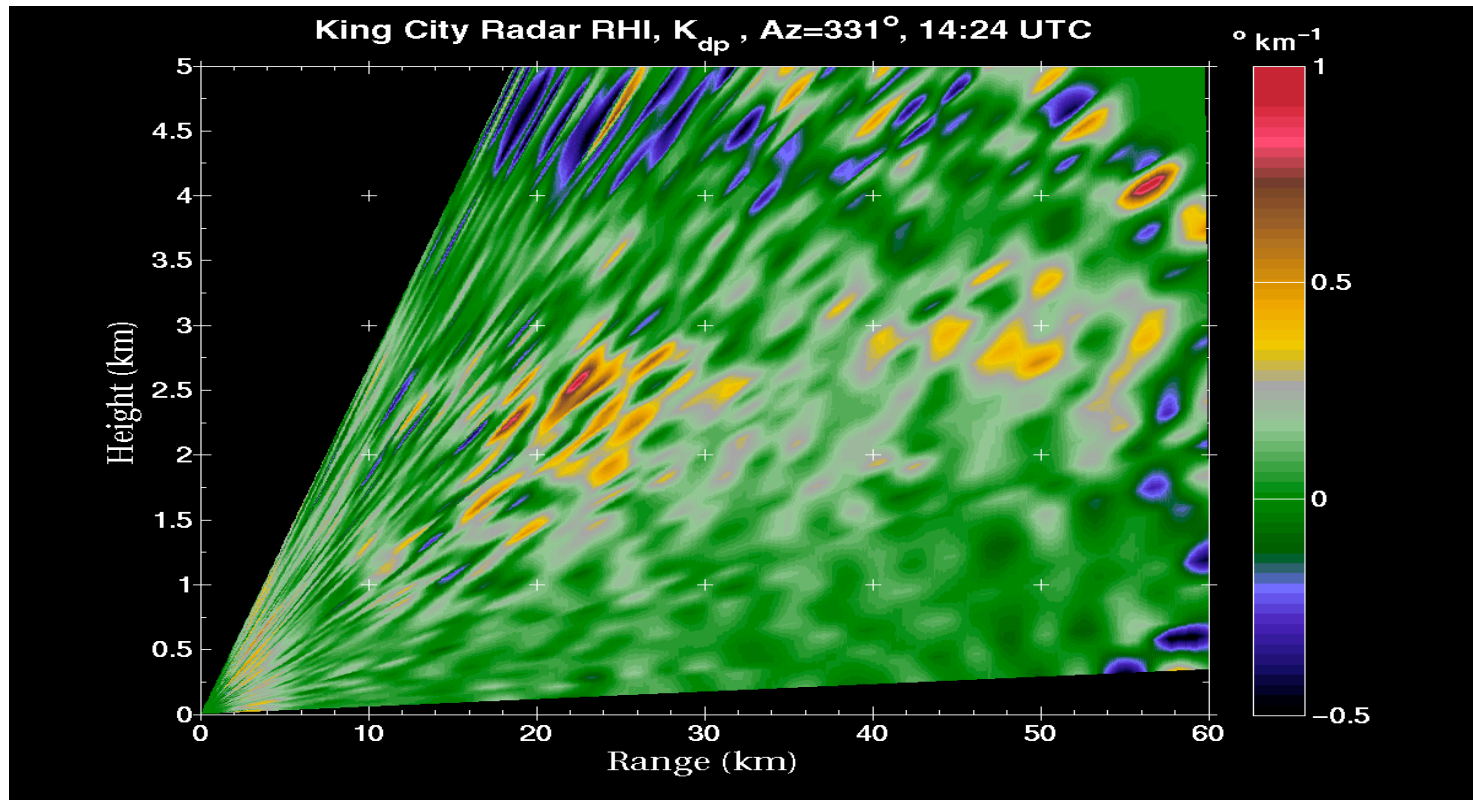
RHI scan of copolar correlation coefficient (r_{co})



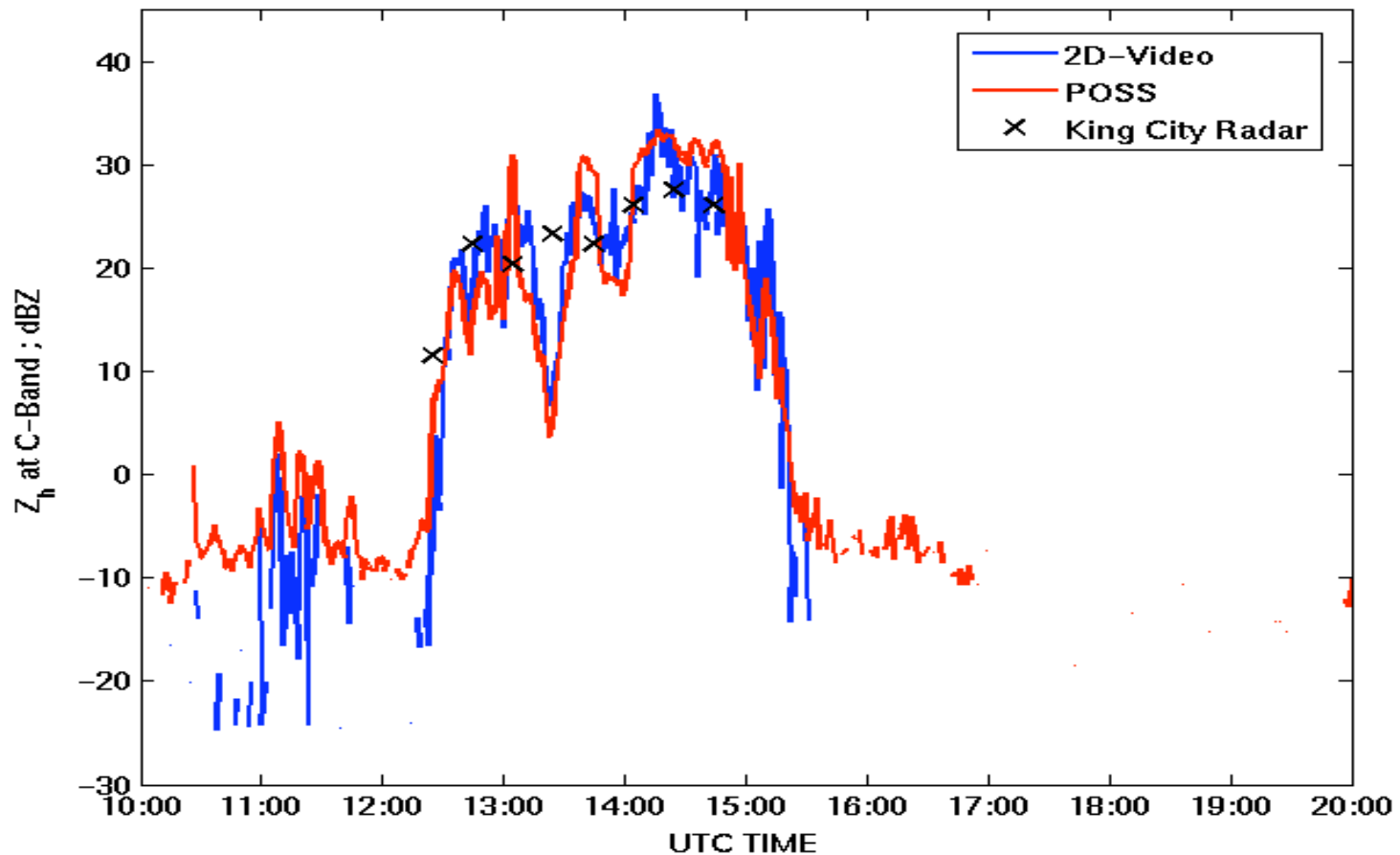
RHI scan of differential propagation phase f_{dp} in degrees



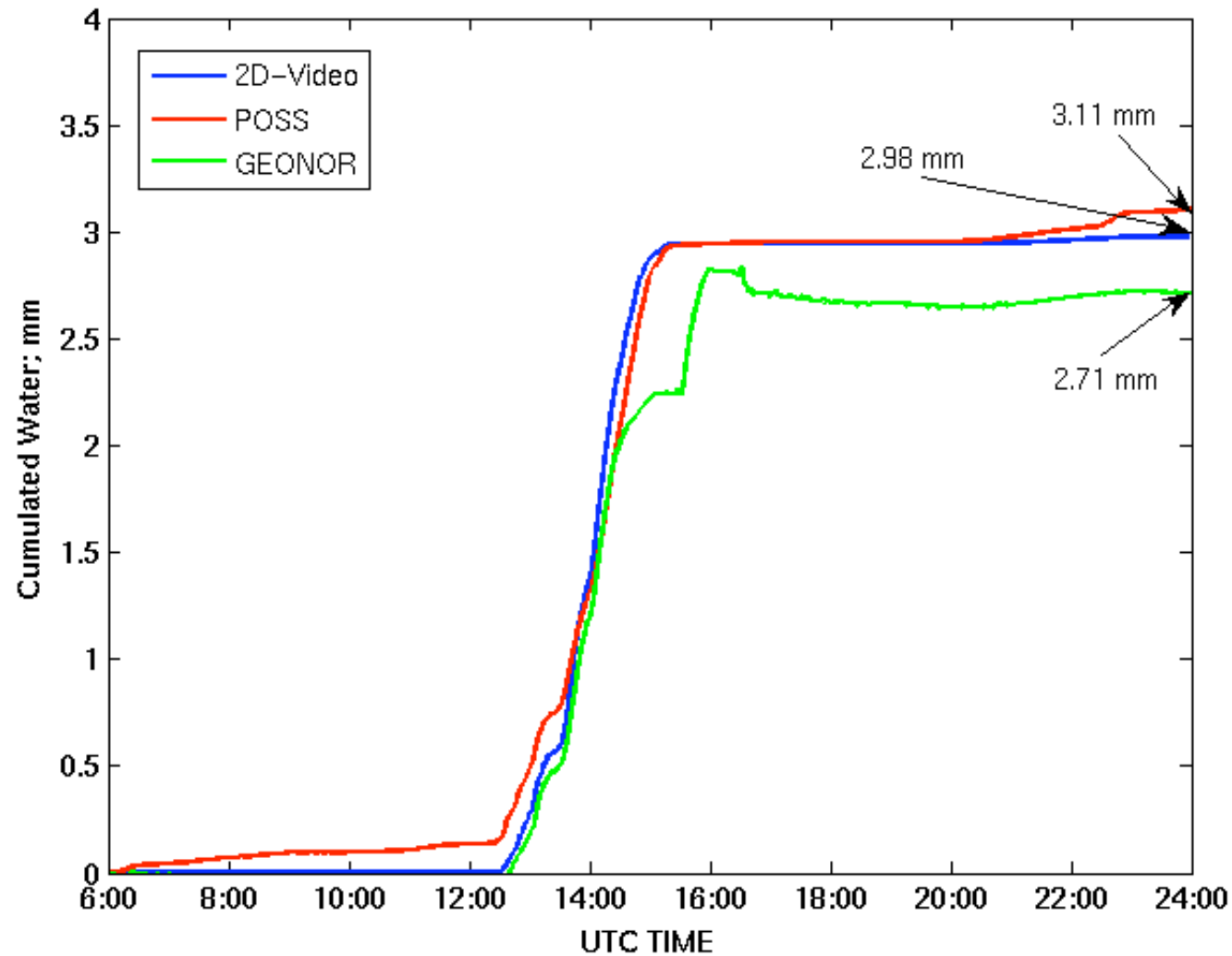
RHI scan of specific differential phase (K_{dp})



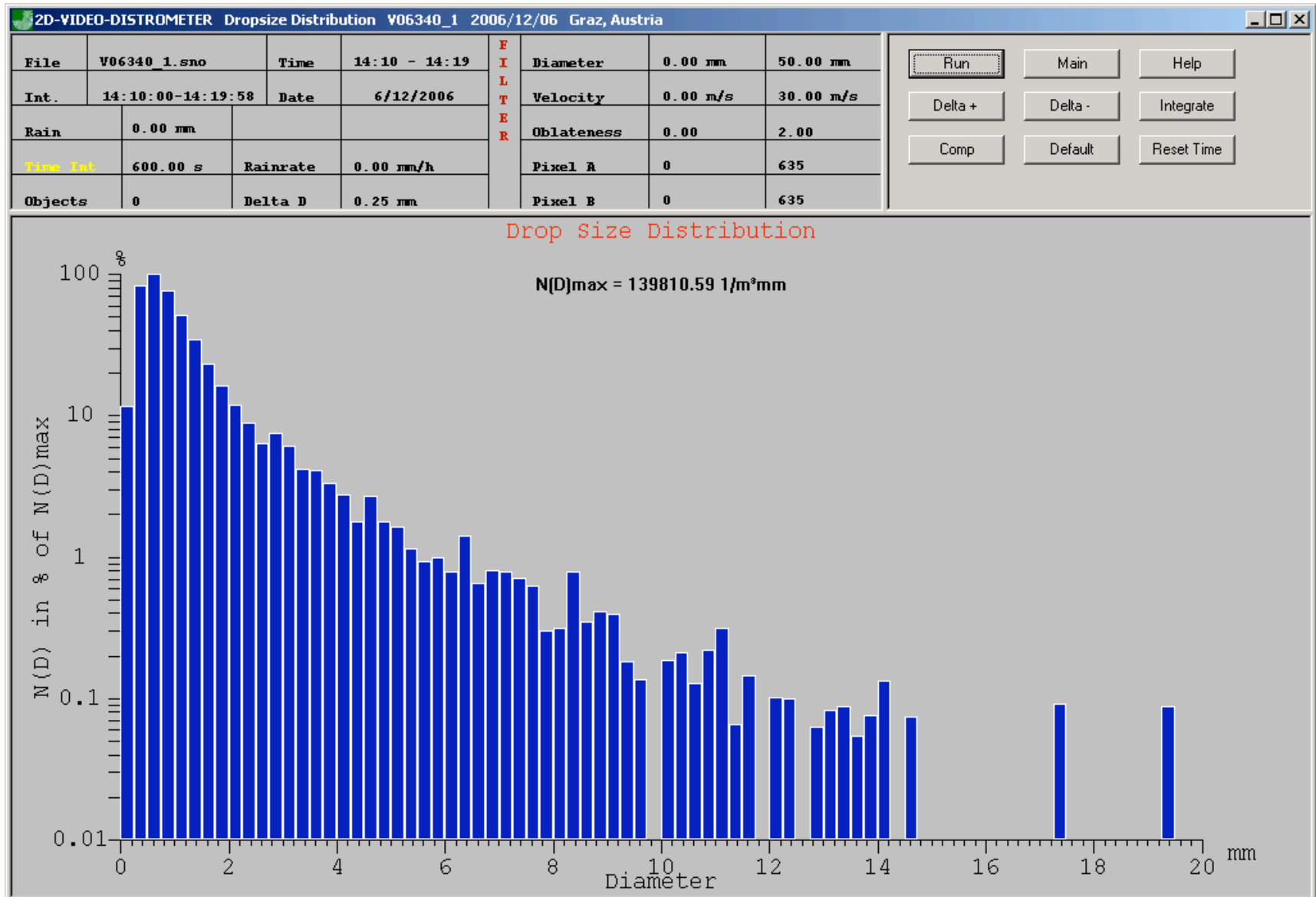
Comparison of reflectivity (Z_h) at C-band as time series over CARE site for 6 Dec 2006 event. Note: Z_h from 2D-video uses dielectric constant for each diameter using Maxwell-Garnet mixture formula with density-'apparent' D relation, $r = D^{-0.922}$ (Ikeda and Brandes). 2D-video and POSS data are 1-min averages



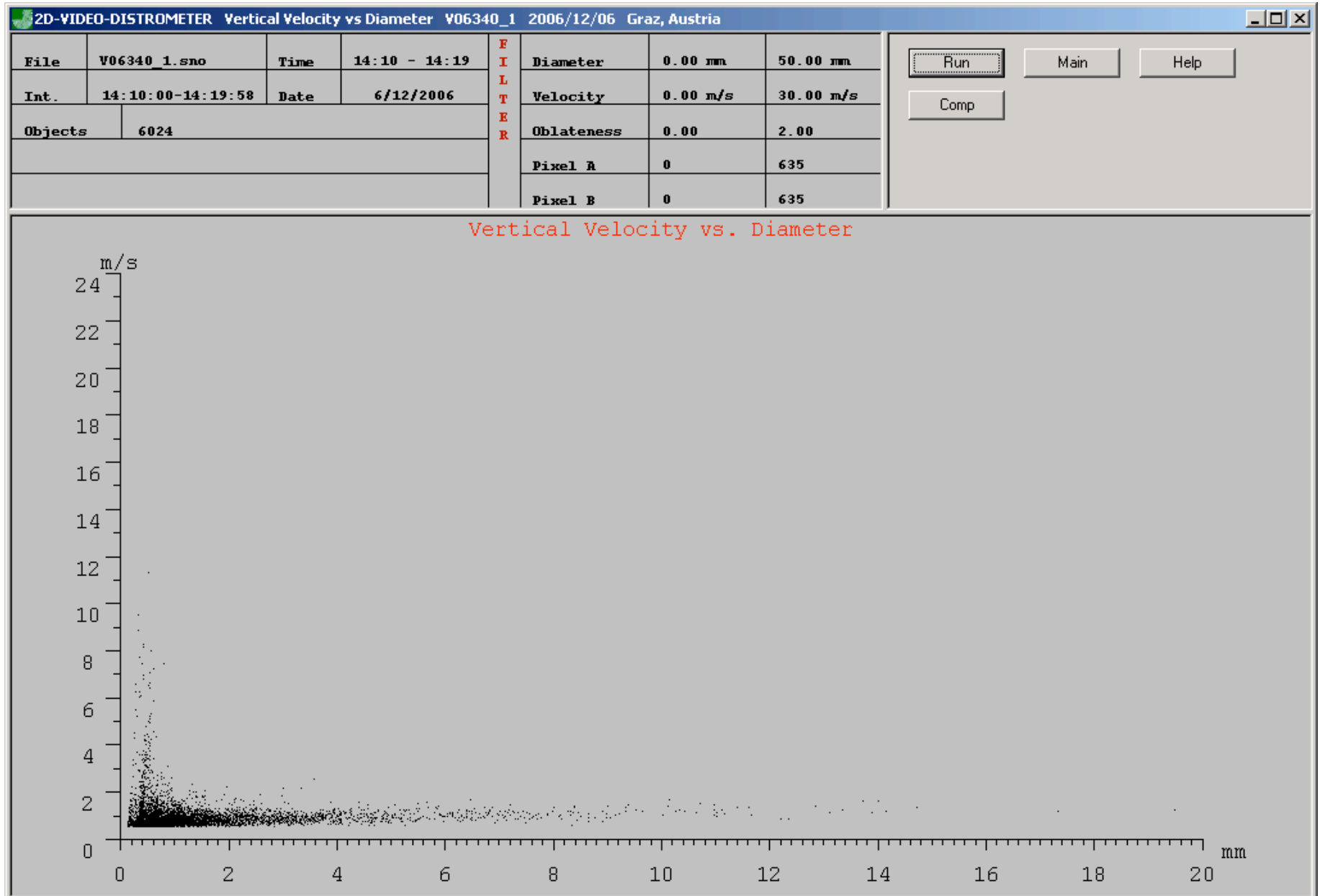
6 Dec 2006 CARE Site: Comparison of equivalent water accumulation from three instruments. Note: 2D-video results uses $r=0.178 D^{-0.922}$ from Ikeda and Brandes Where D is the 'apparent' diameter and r is the density



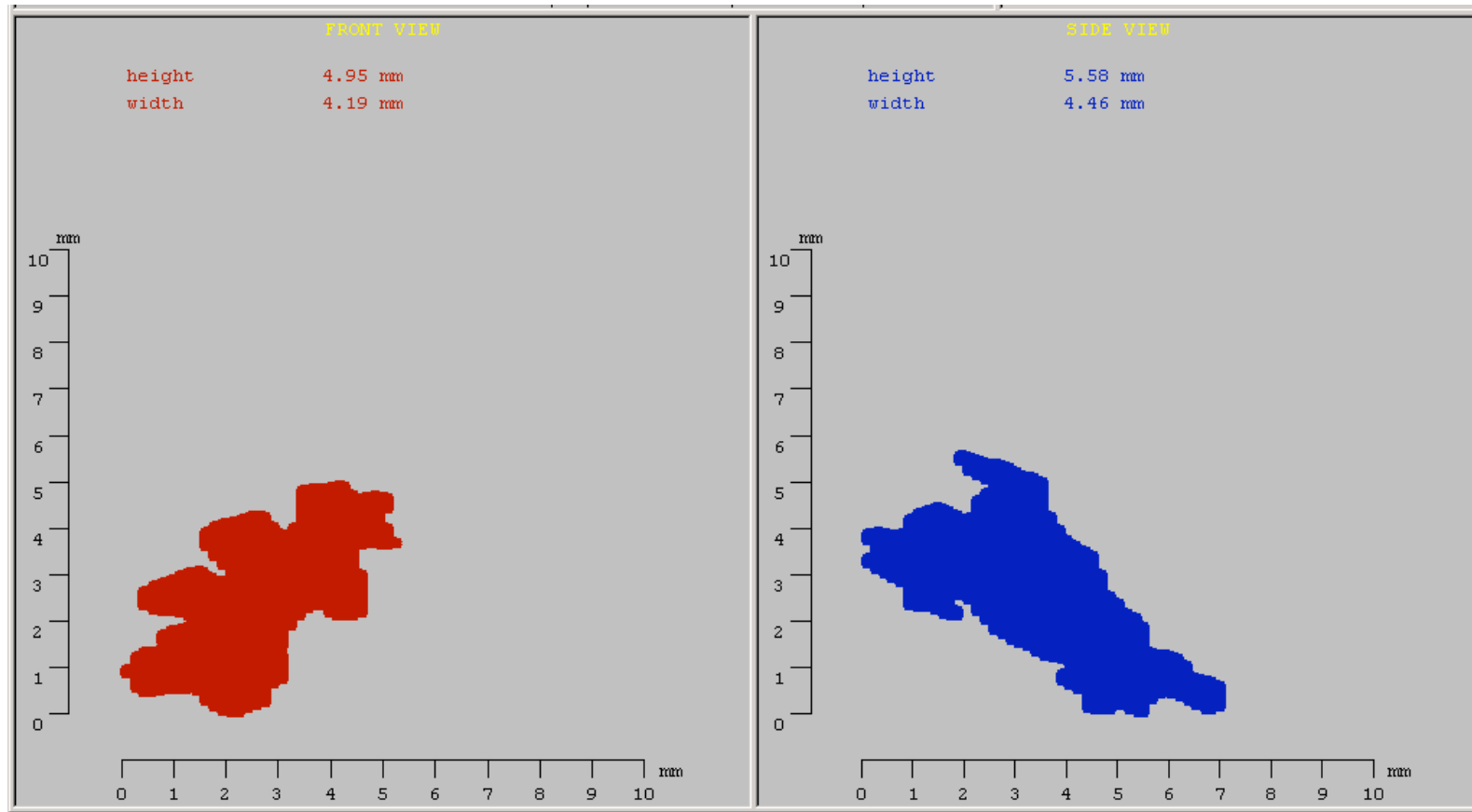
Snow Size Distribution $N(D)$ from 2D video disdrometer where D is 'apparent' diameter (mm). Average from 14:10-14:20 UTC



Vertical velocity (m/s) vs 'apparent diameter' (D in mm) from 2D-video disdrometer From 14:10-14:20 UTC



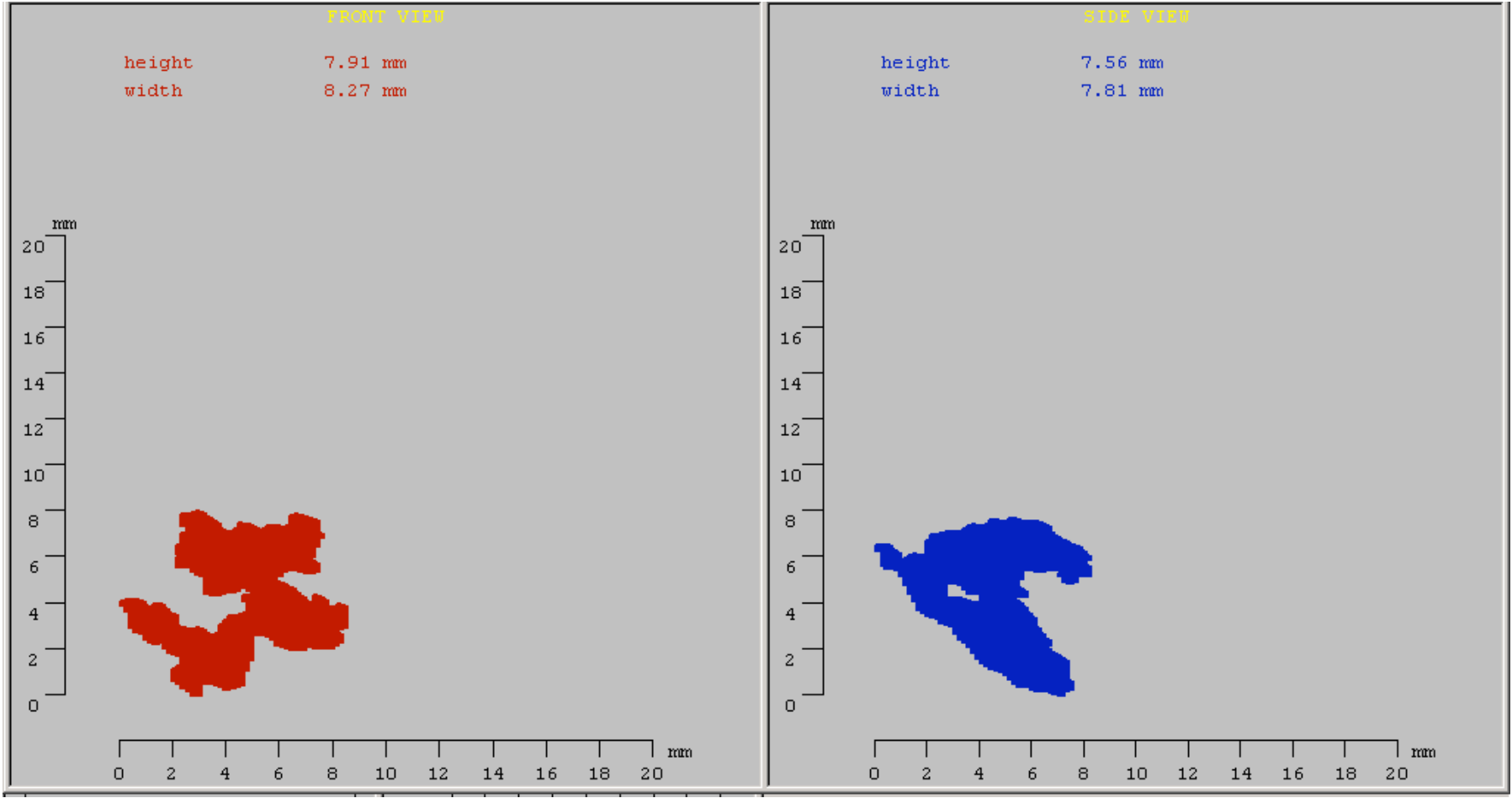
Sample 2D video images from 6 Dec 2006 at CARE site from 2D video disdrometer in the time period 14:10-14:20



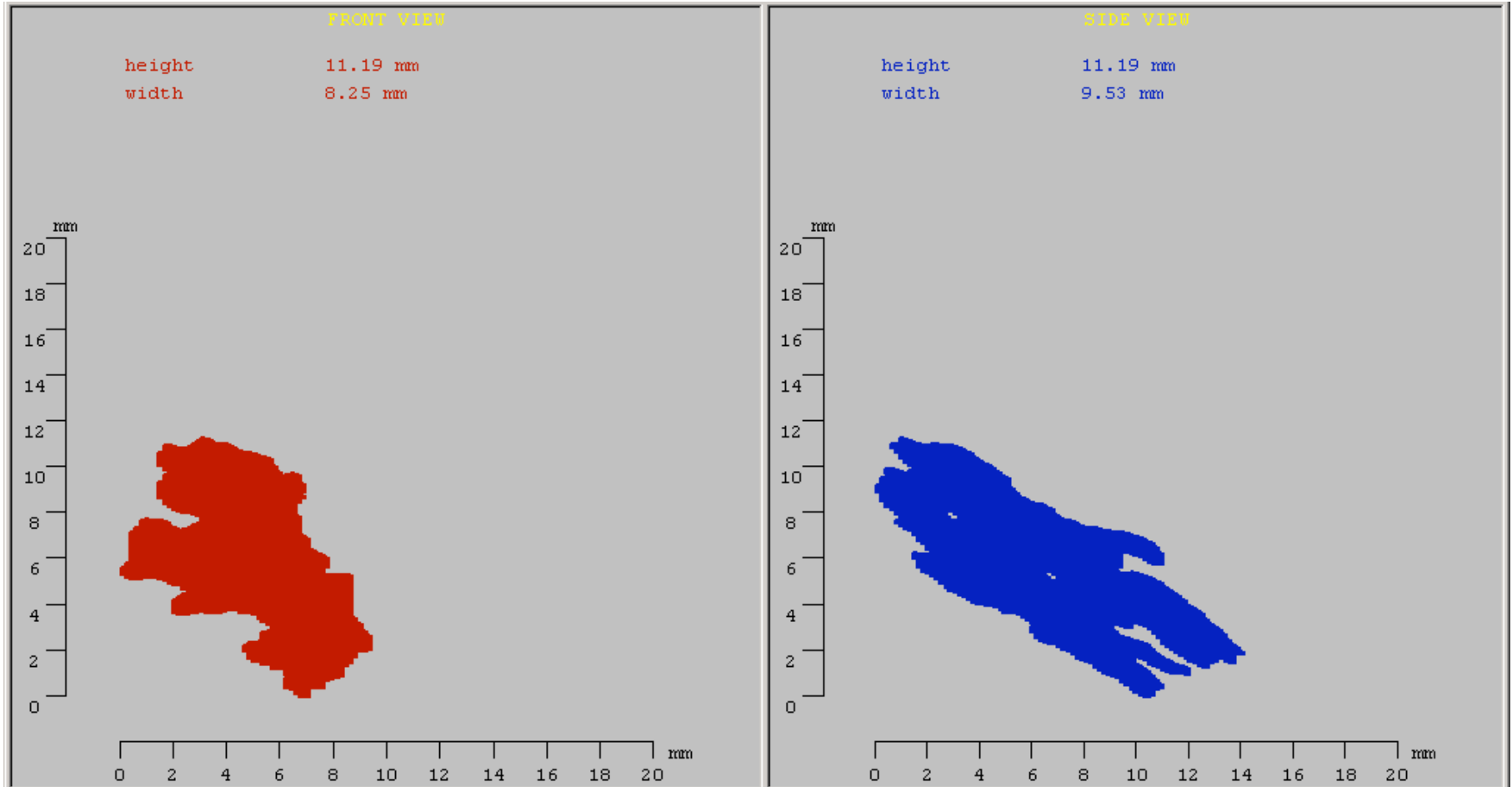
Front View

Side View

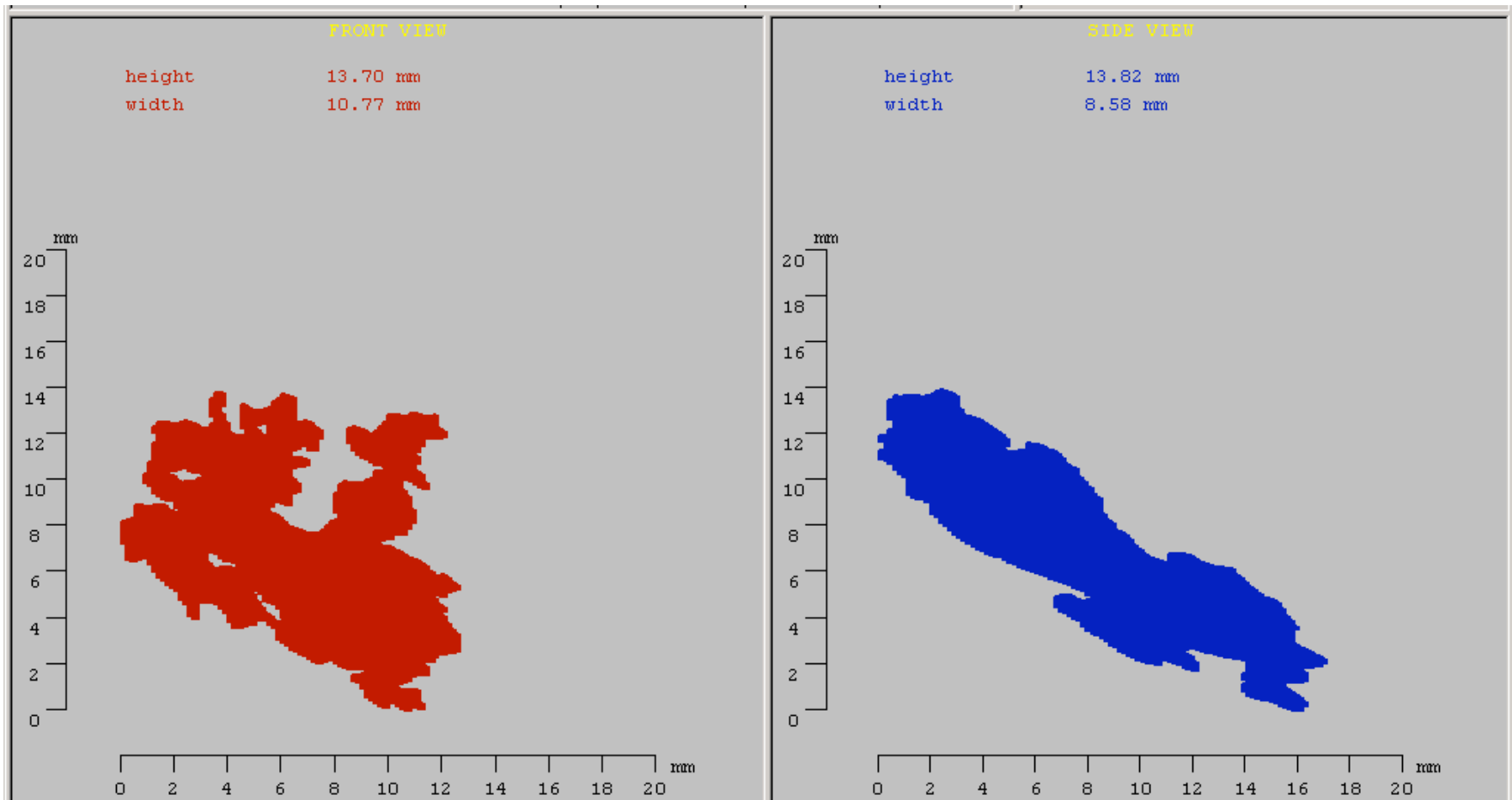
4 mm Snow Flake



6 mm Snow Flake



8 mm Snow Flake



10 mm Snow Flake