



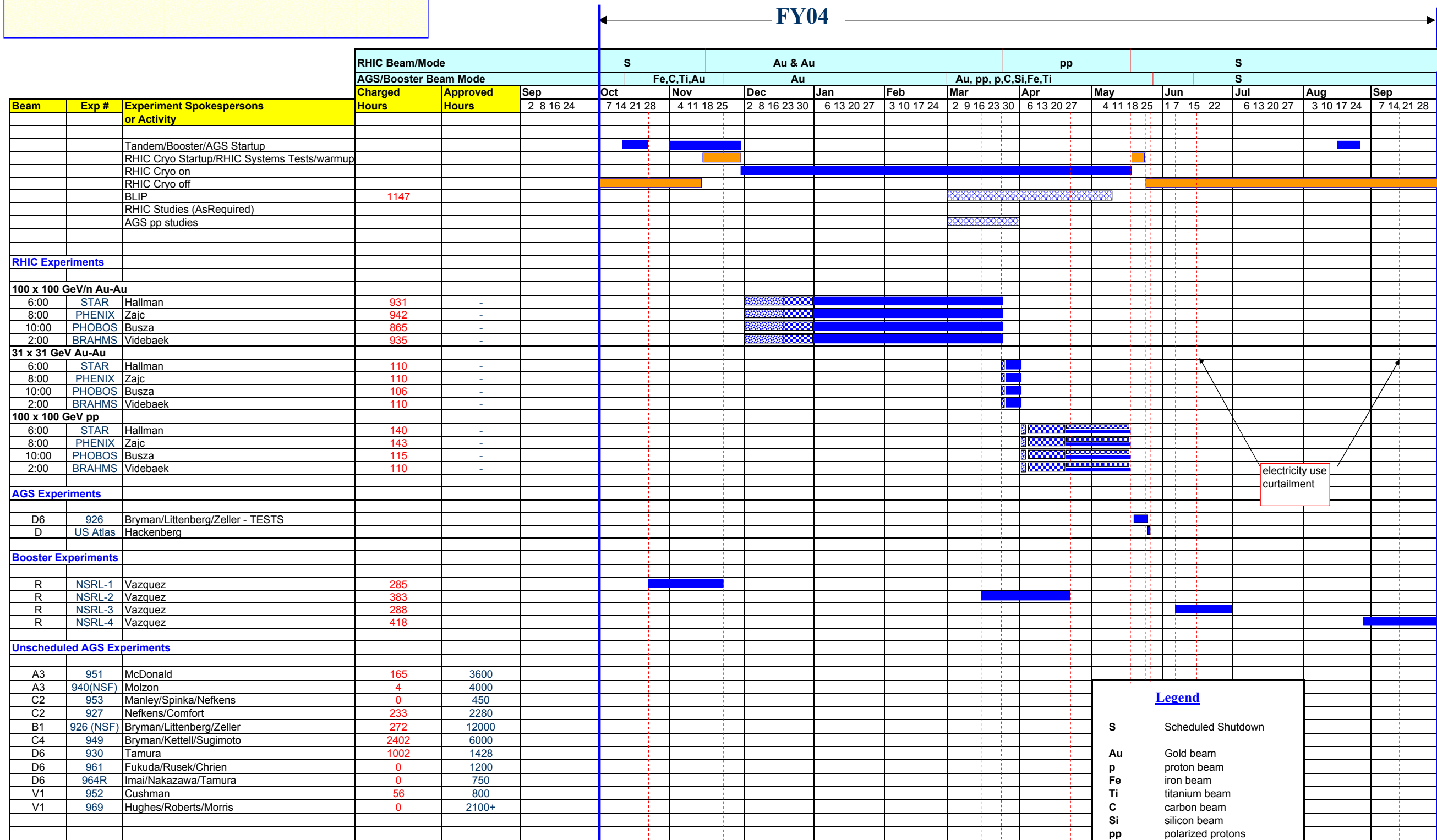
	Normal running
	Concurrent with RHIC operations
	Engineering/Commissioning
	Standby
	RHIC development with colliding beams

# C-A as run schedule, fy2004

By: K. Yip Date: 30 Sep 04



**Legend**

- S Scheduled Shutdown
- Au Gold beam
- p proton beam
- Fe iron beam
- Ti titanium beam
- C carbon beam
- Si silicon beam
- pp polarized protons