

4976

#18

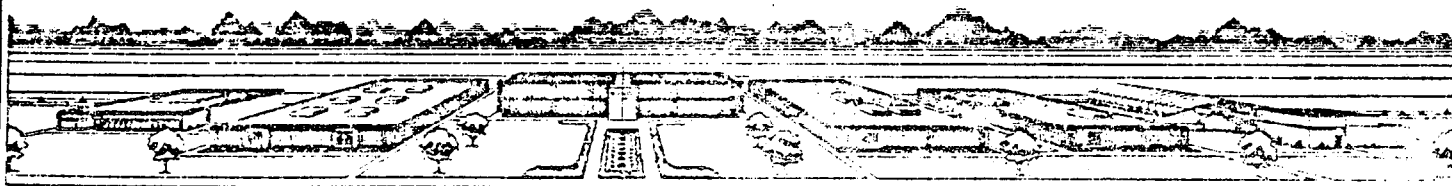
OFF-SITE SURVEILLANCE ACTIVITIES OF THE  
SOUTHWESTERN RADIOLOGICAL HEALTH LABORATORY  
from July through December 1969

by  
Environmental Surveillance  
Southwestern Radiological Health Laboratory

ENVIRONMENTAL PROTECTION AGENCY

February 1971

This surveillance performed under a Memorandum of  
Understanding (No. SF 54 373)  
for the  
U. S. ATOMIC ENERGY COMMISSION



OFF-SITE SURVEILLANCE ACTIVITIES OF THE  
SOUTHWESTERN RADIOLOGICAL HEALTH LABORATORY  
from July through December 1969

by  
Environmental Surveillance  
Southwestern Radiological Health Laboratory\*

ENVIRONMENTAL PROTECTION AGENCY

February 1971

This surveillance performed under a Memorandum of  
Understanding (No. SF 54 373)  
for the  
U. S. ATOMIC ENERGY COMMISSION

\* Formerly part of the U. S. Department of Health, Education, and Welfare,  
Public Health Service, Environmental Health Service, Environmental Control  
Administration, Bureau of Radiological Health.

## ABSTRACT

During the period July through December 1969, fifteen announced underground nuclear tests were conducted by the U. S. Atomic Energy Commission at the Nevada Test Site, and two events, Project Rulison and Project Milrow, were conducted in Colorado and Alaska. One event, Pod, conducted on October 29, 1969, was detected by GM survey instruments only at Lathrop Wells, Nevada. The peak reading was 0.04 mR/hr net gamma.

One power run of the XE-Prime nuclear rocket engine did release radioactivity to the off-site areas. The maximum gross gamma exposure rate measured by portable survey instruments was 0.04 mR/hr. The maximum integrated concentration of  $^{131}\text{I}$  on an air sample was  $0.45 \mu\text{Ci-sec/m}^3$ . No milk or domestic water sampled showed fresh fission products.

All off-site exposures were well below the safety criteria established by the Atomic Energy Commission.

## TABLE OF CONTENTS

ABSTRACT	1
INTRODUCTION	1
OPERATION PROCEDURES	2
Monitoring	2
Exposure Rate Recorders	3
Aerial Cloud Tracking	3
Air Sampling	3
Milk and Water Sampling	4
Vegetation Sampling	4
Dosimetry	5
Community Relations	5
Medical and Veterinary Services	6
SAMPLE ANALYSIS	6
SUMMARY OF INDIVIDUAL EVENTS	6
XE-Prime EP-IXA, August 28, 1969	7
Air Sampling	7
Gamma Exposures	7
Milk and Water	7
Dosimetry	9
POD Event, October 29, 1969	9
CONCLUSIONS	9
APPENDIX	10

## LIST OF TABLES

Table 1. Announced Tests During July 1969 - December 1969	1
Table 2. Air Sampling Stations Established for Projects Rulison and Milrow	4
Table 3. XE-Prime EP-IXA, August 28, 1969, Five Highest <sup>131</sup> I Results and Associated Gross Beta and Isotopic Results <u>from Air Sample Media Extrapolated to End of Collection</u> Period (Combined Particulate and Charcoal Filters)	9

## INTRODUCTION

During the period July through December 1969, fifteen announced underground nuclear tests were conducted by the U. S. Atomic Energy Commission at the Nevada Test Site. One Plowshare event, Rulison, was conducted in Colorado and one event, Milrow, was conducted in Alaska. Table 1 lists the announced tests and dates.

TABLE 1  
Announced Tests During July 1969 - December 1969

EVENT	DATE	EVENT	DATE
Hutch	7/16/69	Cruet	10/29/69
Ildrim	7/16/69	Calabash	10/29/69
Spider	8/14/69	Pod	10/29/69
Pliers	8/27/69	Piccalilli	11/21/69
Rulison (DPNE)*	9/10/69	Diesel Train	12/5/69
Minute Steak	9/12/69	Grape A	12/17/69
Jorum	9/16/69	Lovage	12/17/69
Milrow	10/2/69	Terrine	12/18/69
Pipkin	10/8/69		

\*Plowshare Test

In accordance with a Memorandum of Understanding between the U. S. Atomic Energy Commission (AEC) and the Public Health Service (PHS), the Southwestern Radiological Health Laboratory (SWRHL) conducted a program of radiological monitoring and environmental sampling in the off-site area surrounding the Nevada Test Site, Nuclear Rocket Development Station,

and the Nellis Air Force Range. The overall complex of the Nevada Test Site (NTS) and the Nellis Air Force Range includes the Nuclear Rocket Development Station and the Tonopah Test Range, and for simplicity will be called the Test Range Complex throughout this report. Although routine sampling and monitoring were conducted within a 300-mile radius around the Test Range Complex, surveillance was extended as necessary to provide adequate coverage.

One power run of the XE-Prime nuclear rocket engine at the Nuclear Rocket Development Station released radioactivity that was detected off the Test Range Complex. This experimental operation was conducted on August 29, 1969.

This report describes the methods and equipment used and summarizes the data collected during this six-month period.

## OPERATION PROCEDURES

### Monitoring

Before each event, mobile monitoring teams were sent to the off-site areas most likely to be affected by a release of radioactive material. If a release occurred, the teams conducted a monitoring program directed from the AEC Control Point via two-way radio communications. Measurements were made periodically until activity levels returned to background.

Each monitor carried two Eberline E-500B survey meters, an NE-148 scintillation instrument, and a Victoreen Radector Model No. AGB-50B-SR. The Eberline E-500B has a range of 0 to 200 milliroentgens per hour (mR/hr) for gamma or beta-gamma detection in four ranges with an external halogen filled GM tube, and a 0 to 2000 mR/hr range for gamma

detection from an internal Anton 302 GM tube. The NE-148 is used primarily to indicate the presence of low levels of radioactivity and has a range of 0 to 3 mR/hr in three ranges. The Radector has a range of 0.05 to 50,000 mR/hr over two logarithmic ranges. This instrument uses an inert gas ionization chamber as the detector. These instruments are routinely calibrated to  $\pm 20\%$  with a standardized  $^{137}\text{Cs}$  source.

#### Exposure Rate Recorders

To supplement the ground monitoring program, Eberline RM-11 exposure rate recorders were used to document cloud passage at fixed locations. These recorders have a GM tube detector with a 0.01 to 100 mR/hr range, and are calibrated to  $\pm 20\%$  with a  $^{137}\text{Cs}$  source. The gamma exposure rate is recorded on a 30-hour strip chart. Each monitor was also equipped with two portable battery-operated recorders consisting of an E-500B survey instrument coupled to a Rustrak strip-chart recorder.

#### Aerial Cloud Tracking

An Air Force U-3A aircraft with two PHS monitors carrying portable instruments similar to those used by ground monitors, was used to track the radioactive effluents. Two PHS cloud sampling and cloud tracking aircraft were also used to obtain in-cloud samples, assess total cloud volume, and provide long-range tracking.

#### Air Sampling

During this six-month period the routine SWRHL Air Surveillance Network consisted of 103 stations operating in every state west of the Mississippi River except Montana and North Dakota. Fifteen stations were added for support of Project Rulison and 18 were added for Project Milrow. These stations are listed in Table 2. The air sampler used in the Air Surveillance Network is a

Table 2. Air Sampling Stations Established for Projects  
 • Rulison and Milrow.

RULISON, COLORADO	MILROW, ALASKA
DeBeque	Adak
Grand Valley	Anchorage
Rulison	Bethel
Rifle	Cordova
Mesa	Homer
Silt	Annette
Glenwood Springs	King Salmon
Montrose	Woody Island
Carbondale	Nome
Leadville	Palmer
Gunnison	Seward
Paonia	Shemya
Bond	Mt. Edgecombe
Vega Reservoir	St. Paul
Silt Mesa	Unalakleet
	Dutch Harbor
	Cold Bay
	Yakutat



Gelman "Tempest," consisting of a Gast Model 1550 vacuum pump driven by an electric motor. The sampler has an approximate flow rate of 10 cfm and uses a 4-inch diameter glass fiber filter. Activated charcoal cartridges were used following the filter in 20 stations near the Test Range Complex and can be added to the other stations as necessary, to collect gaseous fission products. The total volume of air sampled is calculated from the average flow rate and the total sampling time. These samplers operate 24 hours a day.

#### Milk and Water Sampling

The routine milk sampling program from both commercial dairies and private producers continued throughout the six-month period. About 30 sources were routinely sampled during this period, many on a monthly basis. A total of 194 samples were collected from these locations. In the event of cloud passage over a specific area, intensified sampling within the area was conducted to document changes in activity. All milk sampling results are listed in Appendix A.

Both domestic and non-domestic water supplies were sampled on a routine basis. Water sampling was increased if a release occurred. During this period, 564 water samples were collected from about 95 sources.

#### Vegetation Sampling

Normally, vegetation samples were collected only in the event of a release of radioactive material and analyzed for gross gamma radioactivity to delineate the fallout pattern. At most locations where milk samples were collected, samples of the cow's feed were collected and analyzed for specific radionuclides.

## Dosimetry

Approximately 87 residents in the off-site area wore film badges throughout this period. These film badges were changed each month and were processed by the Radiological Sciences Department of Reynolds Electrical and Engineering Company, Inc. In addition, 107 film badge stations, each with five badges, were located around the Test Range Complex and were also exchanged monthly. The badge contains DuPont Type 545 film. The gamma exposure, as determined from this film, is accurate to  $\pm 50\%$  in the 30 to 100 mR range and  $\pm 10\%$  in the 100 to 2000 mR range.

All of the 107 stations were equipped with three EG&G Model TL-12 thermoluminescent dosimeters (TLD's) which were exchanged monthly with the film badges. The TLD's have a uniform energy response from 50 keV to several MeV with a low energy cutoff at 50 keV. According to past TLD data, a reading at 10 mR above the previous month's background constitutes a detectable exposure.

## Community Relations

Frequent contacts with the off-site population by route monitors and numerous presentations for schools and civic groups provided the opportunity to explain the role of PHS in support of the AEC testing programs. As a result of favorable community relations, a number of off-site residents took part in the environmental sampling program. All routine air sampling stations except the one at Las Vegas were operated by local citizens and many people volunteered to wear film badge dosimeters.

For some events involving higher yield devices, community information centers were established in towns around NTS to keep the people informed of shot-time, notify residents of possible hazards, evacuate specified buildings, and process any complaints following the event.

## Medical and Veterinary Services

A PHS medical officer was available in the event any complaints of a medical nature arose as a result of the test series and to provide liaison with local physicians. No such cases were brought to the attention of the PHS.

Veterinary services were provided by PHS veterinarians. Liaison was maintained with livestock producers in the area and the program of wildlife and cattle investigation was continued.

### SAMPLE ANALYSIS

Analytical procedures can be found in Document NV-28, an AEC publication, revised 1968.

### SUMMARY OF INDIVIDUAL EVENTS

Only two nuclear events released radioactivity that was detected in the off-site environment. These were the power-run of the XE-Prime Experimental Plan IXA (EP-IXA) on August 28, 1969, and the Pod Event of October 29, 1969.

Project Rulison in western Colorado and Project Milrow on Amchitka Island, Alaska, did not release radioactive material, but required considerable effort consisting of pre- and post-shot environmental sampling, establishing air surveillance networks, community information, and in the case of Rulison, pre-shot evacuation necessitated by expected ground motion.

## XE-PRIME EP-IXA, AUGUST 28, 1969

EP-IXA was an intermediate power test of the XE-Prime engine at ETS-1, NRDS. The engine was operated at a power level of 610 MW for two periods on August 28, 1969, from 1636 to 1638 hours and from 1646 to 1649 hours, PDT.

### Air Sampling

In addition to the Air Surveillance Network Stations, five temporary air samplers were operated on Nevada Highway 25 between Hancock Summit and Queen City Summit following EP-IXA. Seven of the ASN stations and three of the temporary samplers detected the EP-IXA effluent. The results of samples with the five highest concentrations of  $^{131}\text{I}$  are presented in Table 3.

### Gamma Exposures

On Highway 25, monitors detected cloud passage at only three of the five temporary air sampling locations, Queen City Summit, Koynes Mill, and Coyote Summit. The peak radiation level was 0.04 mR/hr on GM survey instruments. No radiation levels above background were detected by gamma-rate recorders.

### Milk and Water

Milk, water, and cow feed samples were collected at ranches in Nyala, Duckwater, Lund, and Shoshone, Nevada. No fresh fission products were detected.

TABLE 3

XE-PRIME EP-IXA  
August 28, 1969

Five Highest <sup>131</sup>I Results and Associated Gross Beta and Isotopic Results from Air Sample Media  
Extrapolated to End of Collection Period (Combined Particulate and Charcoal Filters)

LOCATION Azimuth- Distance From ETS-1	TIME On Off	DATE On Off	AVERAGE CONCENTRATIONS DURING COLLECTION PERIOD (pCi/m <sup>3</sup> ) AND INTEGRATED CONCENTRATIONS (μCi·sec/m <sup>3</sup> )											
			Gross Beta		<sup>131</sup> I		<sup>132</sup> Te		<sup>133</sup> I		<sup>135</sup> I		<sup>91</sup> Sr	
			$\frac{\text{pCi}}{\text{m}^3}$	$\frac{\mu\text{Ci}\cdot\text{sec}}{\text{m}^3}$	$\frac{\text{pCi}}{\text{m}^3}$	$\frac{\mu\text{Ci}\cdot\text{sec}}{\text{m}^3}$	$\frac{\text{pCi}}{\text{m}^3}$	$\frac{\mu\text{Ci}\cdot\text{sec}}{\text{m}^3}$	$\frac{\text{pCi}}{\text{m}^3}$	$\frac{\mu\text{Ci}\cdot\text{sec}}{\text{m}^3}$	$\frac{\text{pCi}}{\text{m}^3}$	$\frac{\mu\text{Ci}\cdot\text{sec}}{\text{m}^3}$	$\frac{\text{pCi}}{\text{m}^3}$	$\frac{\mu\text{Ci}\cdot\text{sec}}{\text{m}^3}$
Koyne's Mill* 28°, 55 mi	1854 2054	8/28 8/28	5000	36	62	0.45	150	1.1	280	2.0	560	4.1	120	0.86
Queen City Summit* 8°, 67 mi	1925 2050	8/28 8/28	5700	29	55	0.28	170	0.86	320	1.6	550	2.8	190	0.96
Nyala 18°, 103 mi	0700# 0700	8/28 8/29	11	0.85	1.7	0.13	3.0	0.23	5.5	0.42	ND	ND	ND	ND
Blue Eagle Ranch** 19°, 123 mi	0655## 0620	8/28 8/29	11	0.81	1.3	0.10	2.9	0.22	ND	ND	ND	ND	ND	ND
Lund 27°, 158 mi	0758 0814	8/28 8/29	9.6	0.84	0.9	0.08	2.1	0.18	ND	ND	ND	ND	ND	ND

\*Temporary stations.

\*\*No charcoal cartridge run.

#Sampler operated for 21.4 hours during this period.

##Sampler operated for 21.3 hours during this period.

## Dosimetry

No dosimetry devices collected after the event showed exposures above background.

### POD EVENT OCTOBER 29, 1969

The Pod Event was conducted in Area 2 at 1200 hours PST on October 29, 1969. The radioactivity from the Pod Event was detected on GM survey instruments by monitors at Lathrop Wells and on Highway 95, 10 miles west of Highway Junction 95/16. At these locations at 1740 and 1632 hours, respectively, the maximum gross gamma exposure rate observed was 0.06 mR/hr. Background levels at these locations were 0.02 to 0.04 mR/hr. The net exposure at both locations was less than 0.1 mR. No radiation above background was detected by gamma-rate recorders. No fresh fission products were detected in any environmental samples.

### CONCLUSIONS

Results obtained through environmental radiation surveillance during the period indicate that no individual in the off-site area received an exposure, resulting from Nevada Test Site operations, which exceeded the guides established by the AEC and/or recommended by the Federal Radiation Council.

## APPENDIX

Milk sample results for the six-month period.

### Note:

The first line of each sample listing gives the location of the sample source, the identification number assigned to the sample when it arrives at the laboratory, and the date the sample was collected. The remaining lines show the nuclides present in the sample in units of picocuries per liter, except for calcium and potassium which are given in units of grams per liter.

Routinely, analysis is made for the following eight nuclides:  $^{144}\text{Ce}$ ,  $^{131}\text{I}$ ,  $^{106}\text{Ru}$ ,  $^{137}\text{Cs}$ ,  $^{95}\text{Zr}$ ,  $^{54}\text{Mn}$ ,  $^{40}\text{K}$ , and  $^{140}\text{Ba}$ . These nuclides are listed only when they are present in detectable quantities. When samples are collected for particular events, analysis is generally done for  $^{133}\text{I}$  in place of  $^{106}\text{Ru}$ .

The nuclides which are processed by radiochemistry methods--Ca,  $^{89}\text{Sr}$ ,  $^{90}\text{Sr}$ --are listed if radiochemistry is performed, even if they are not detectable. If  $^{89}\text{Sr}$  is not detectable, it is listed as "B," which signifies  $<5$  pCi/l. If  $^{90}\text{Sr}$  is not detectable, it is listed as "D," which signifies  $<0.1$  pCi/l.

Some of the values are listed in exponential form:

$3.0\text{E}01 = 3.0 \times 10^1 = 30$ ;  $5.5\text{E}02 = 5.5 \times 10^2 = 550$ , etc.

## APPENDIX

## OFF-SITE MILK JULY THROUGH DECEMBER 1969

## COLLECTED

CAMDEN ARK OUACHITA VALLEY DAIRY 131I=LT(10)            137CS=4.0E01 90SR=9	PM 56009010303712071370 07 28 69 K=1.6E00            89SR=LT(5)	546
CAMDEN ARK OUACHITA VALLEY DAIRY 131I=LT(10)            137CS=3.0E01 CHEM	AM 56009010303712071689 08 08 69 K=1.6E00            NO	546
CAMDEN ARK OUACHITA VALLEY DAIRY 131I=LT(10)            137CS=2.0E01 90SR=13	AM 56009010303712071841 08 19 69 K=1.6E00            89SR=10	546
CAMDEN ARK OUACHITA VALLEY DAIRY 131I=LT(10)            137CS=2.0E01 CHEM	PM 56009010303712072111 08 27 69 K=1.6E00            NO	546
FAYETTEVILLE ARK UNIV OF ARKANSAS 131I=LT(10)            137CS=2.0E01 90SR=7	AM 56020014303712071316 07 29 69 K=1.7E00            89SR=LT(5)	547
LITTLE ROCK ARK BORDENS 131I=LT(10)            137CS=2.0E01 90SR=7	AM 56032011903712071386 07 31 69 K=1.6E00            89SR=LT(5)	548
PARAGOULD ARK FOREMOST FOODS INC 131I=LT(10)            137CS=LT(10) 90SR=16	AM 56045005503712071385 07 29 69 K=1.6E00            89SR=12	549
RUSSELLVILLE ARK SUGAR CREEK CREAMERY 131I=LT(10)            137CS=LT(10) 90SR=7	AM 56053011503712071384 07 30 69 K=1.6E00            89SR=LT(5)	550

NOTE--MILK, WATER, RADON UNITS ARE PCI/L, EXCEPT K=GM/L,  
 FOOD AND FEED UNITS ARE PCI/KGM, EXCEPT K=GM/KGM,  
 SURVEILLANCE AIR RESULTS ARE PCI/M3,  
 SOIL RESULTS ARE PCI/GM,  
 LT(X) DENOTES A RESULT LESS THAN X.



APPENDIX

OFF-SITE MILK JULY THROUGH DECEMBER 1969

COLLECTED

RUSSELLVILLE ARK SUGAR CREEK CREAMERY AM 56053011503712071422 07 31 69 550  
1311=LT(10) 137CS=2.0E01 K=1.5E00 NO  
CHEM

NOTE--MILK, WATER, RADON UNITS ARE PCI/L, EXCEPT K=GM/L,  
FOOD AND FEED UNITS ARE PCI/KGM, EXCEPT K=GM/KGM,  
SURVEILLANCE AIR RESULTS ARE PCI/M3,  
SOIL RESULTS ARE PCI/GM,  
LT(X) DENOTES A RESULT LESS THAN X.

PAGE 2A

## APPENDIX

## OFF-SITE MILK JULY THROUGH DECEMBER 1969

## COLLECTED

BAKERSFIELD CALIF CARNATION CO 131I=LT(10)            137CS=LT(10) 90SR=LT(2)	PM 56024002904912074345 11 20 69 K=1.4E00                    89SR=LT(5)	580
BAKERSFIELD CALIF CARNATION CO 131I=LT(10)            137CS=LT(10) CHEM	AM 56024002904912074392 11 21 69 K=1.6E00                    NO	580
BAKERSFIELD CALIF CARNATION CO 131I=LT(10)            137CS=LT(10) CHEM	AM 56024002904912074391 11 22 69 K=1.6E00                    NO	580
BAKERSFIELD CALIF CARNATION CO 131I=LT(10)            137CS=LT(10) CHEM	AM 56024002904912074401 11 23 69 K=1.6E00                    NO	580
BAKERSFIELD CALIF CARNATION CO 131I=LT(10)            137CS=LT(10) CHEM	AM 56024002904912074402 11 24 69 K=1.5E00                    NO	580
BAKERSFIELD CALIF CARNATION CO 131I=LT(10)            137CS=LT(10) CHEM	AM 56024002904912074410 11 25 69 K=1.5E00                    NO	580
BAKERSFIELD CALIF CARNATION CO 131I=LT(10)            137CS=LT(10) CHEM	AM 56024002904912074441 11 26 69 K=1.7E00                    NO	580
BARSTOW CALIF HILL'S DAIRY 131I=LT(10)            137CS=LT(10) 90SR=LT(2)	AM 51027007104911071542 08 05 69 8390006 K=1.6E00                    89SR=LT(5)	

NOTE--MILK, WATER, RADON UNITS ARE PCI/L, EXCEPT K=GM/L,  
FOOD AND FEED UNITS ARE PCI/KGM, EXCEPT K=GM/KGM,  
SURVEILLANCE AIR RESULTS ARE PCI/M3,  
SOIL RESULTS ARE PCI/GM,  
LT(X) DENOTES A RESULT LESS THAN X.

## APPENDIX

## OFF-SITE MILK JULY THROUGH DECEMBER 1969

## COLLECTED

BARSTOW CALIF HILL'S DAIRY 131I=LT(10)      137CS=LT(10) 90SR=2	PM 51027007104911072655 09 22 69 8390006 K=1.5E00      89SR=LT(5)
BARSTOW CALIF HILL'S DAIRY 131I=LT(10)      137CS=LT(10) 90SR=2	AM 51027007104911073120 10 13 69 8390006 K=1.5E00      89SR=LT(5)
BARSTOW CALIF HILL'S DAIRY 131I=LT(10)      137CS=LT(10) 90SR=LT(2)	PM 51027007104911073755 11 05 69 8390006 K=1.5E00      89SR=LT(5)
BARSTOW CALIF HILL'S DAIRY 131I=LT(10)      137CS=LT(10) 90SR=LT(2)	AM 51027007104911074630 12 01 69 8390006 K=1.5E00      89SR=LT(5)
BISHOP CALIF SIERRA FARMS 131I=LT(10)      137CS=LT(10) 90SR=4	AM 51037002704911068158 07 01 69 8290021 K=1.5E00      89SR=LT(5)
BISHOP CALIF SIERRA FARMS 131I=LT(10)      137CS=1.0E01 90SR=2	PM 51037002704911071545 08 05 69 8290021 K=1.1E00      89SR=LT(5)
BISHOP CALIF SIERRA FARMS 131I=LT(10)      137CS=1.0E01 90SR=2	PM 51037002704911072653 09 22 69 8290021 K=1.6E00      89SR=LT(5)
BISHOP CALIF SIERRA FARMS 131I=LT(10)      137CS=LT(10) 90SR=4	PM 51037002704911073117 10 13 69 8290021 K=1.5E00      89SR=LT(5)

NOTE--MILK, WATER, RADON UNITS ARE PCI/L, EXCEPT K=GM/L,  
FOOD AND FEED UNITS ARE PCI/KGM, EXCEPT K=GM/KGM,  
SURVEILLANCE AIR RESULTS ARE PCI/M3,  
SOIL RESULTS ARE PCI/GM,  
LT(X) DENOTES A RESULT LESS THAN X.

## APPENDIX

OFF-SITE MILK JULY THROUGH DECEMBER 1969

COLLECTED

BISHOP CALIF SIERRA FARMS 131I=LT(10)      137CS=LT(10) 90SR=LT(2)	PM 51037002704911073757 11 06 69 8290021 K=1.5E00      89SR=LT(5)
BISHOP CALIF SIERRA FARMS 131I=LT(10)      137CS=LT(10) 90SR=LT(2)	PM 51037002704911074629 12 03 69 8290021 K=1.7E00      89SR=LT(5)
CRESCENT CITY CALIF PARKSIDE DAIRY 131I=LT(10)      137CS=2.0E01 90SR=18	AM 56082001504912074322 11 18 69      311 K=1.3E00      89SR=8
EUREKA CALIF GRANVILLE CHRISTIAN 131I=LT(10)      137CS=1.0E01 90SR=7	AM 56114002304912074388 11 18 69      314 K=1.3E00      89SR=LT(5)
FORT BRAGG CALIF O'TOOLE DAIRY 131I=LT(10)      137CS=LT(10) 90SR=2	PM 56126003504912074321 11 18 69      317 K=1.7E00      89SR=LT(5)
FRESNO CALIF HARPAIN'S DAIRY 131I=LT(10)      137CS=LT(10) 90SR=LT(2)	AM 56130001904912074342 11 19 69      338 K=1.5E00      89SR=LT(5)
FRESNO CALIF ST COLLEGE CREAMERY 131I=LT(10)      137CS=LT(10) 90SR=3	AM 56130001904912074344 11 18 69      339 K=1.5E00      89SR=LT(5)
HANFORD CALIF SUPERIOR DAIRY PROD 131I=LT(10)      137CS=LT(10) 90SR=2	PM 56143003104912074386 11 19 69      340 K=1.7E00      89SR=LT(5)

NOTE--MILK, WATER, RADON UNITS ARE PCI/L, EXCEPT K=GM/L,  
FOOD AND FEED UNITS ARE PCI/KGM, EXCEPT K=GM/KGM,  
SURVEILLANCE AIR RESULTS ARE PCI/M3,  
SOIL RESULTS ARE PCI/GM,  
LT(X) DENOTES A RESULT LESS THAN X.

## APPENDIX

OFF-SITE MILK JULY THROUGH DECEMBER 1969

COLLECTED

LONE PINE CALIF LONE PINE DAIRY 131I=LT(10) 137CS=LT(10) 90SR=3	AM 51185502704911068160 07 01 69 8390023 K=1.6E00 89SR=LT(5)
LONE PINE CALIF LONE PINE DAIRY 131I=LT(10) 137CS=LT(10) 90SR=LT(2)	PM 51185502704911071544 08 05 69 8290023 K=1.5E00 89SR=LT(5)
LONE PINE CALIF LONE PINE DAIRY 131I=LT(10) 137CS=LT(10) 90SR=2	PM 51185502704911072654 09 22 69 8290023 K=1.5E00 89SR=LT(5)
LONE PINE CALIF LONE PINE DAIRY 131I=LT(10) 137CS=LT(10) 90SR=2	PM 51185502704911073118 10 14 69 8290023 K=1.4E00 89SR=LT(5)
LONE PINE CALIF LONE PINE DAIRY 131I=LT(10) 137CS=LT(10) 90SR=LT(2)	PM 51185502704911073756 11 06 69 8390023 K=1.4E00 89SR=LT(5)
LONE PINE CALIF LONE PINE DAIRY 131I=LT(10) 137CS=LT(10) 90SR=LT(2)	PM 51185502704911074627 12 02 69 8390023 K=1.5E00 89SR=LT(5)
MADERA CALIF QUALITY DAIRY 131I=LT(10) 137CS=LT(10) 90SR=2	AM 56194003904912073996 11 18 69 337 K=1.3E00 89SR=LT(5)
MADERA CALIF QUALITY DAIRY 131I=LT(10) 137CS=LT(10) CHEM	AM 56194003904912074324 11 19 69 337 K=1.6E00 NO

NOTE--MILK, WATER, RADON UNITS ARE PCI/L, EXCEPT K=GM/L,  
FOOD AND FEED UNITS ARE PCI/KGM, EXCEPT K=GM/KGM,  
SURVEILLANCE AIR RESULTS ARE PCI/M3,  
SOIL RESULTS ARE PCI/GM,  
LT(X) DENOTES A RESULT LESS THAN X.

## APPENDIX

## OFF-SITE MILK JULY THROUGH DECEMBER 1969

## COLLECTED

MERCED CALIF SUNSHINE DAIRY 131I=LT(10) 90SR=4	137CS=LT(10)	AM 56205004704912074442 11 25 69 K=1.6E00	89SR=LT(5)	336
MERCED CALIF SUNSHINE DAIRY 131I=LT(10) CHEM	137CS=LT(10)	AM 56205004704912074453 11 27 69 K=1.7E00	NO	336
MERCED CALIF SUNSHINE DAIRY 131I=LT(10) CHEM	137CS=LT(10)	AM 56205004704912074454 11 28 69 K=1.5E00	NO	336
MERCED CALIF SUNSHINE DAIRY 131I=LT(10) CHEM	137CS=LT(10)	PM 56205004704912074656 11 30 69 K=1.5E00	NO	336
MERCED CALIF SUNSHINE DAIRY 131I=LT(10) CHEM	137CS=LT(10)	PM 56205004704912074657 12 01 69 K=1.5E00	NO	336
NEWHALL CALIF BURBANK CREAMERY 131I=LT(10) 90SR=LT(2)	137CS=LT(10)	PM 56226003704912074403 11 19 69 K=1.6E00	89SR=LT(5)	342
OLANCHA CALIF HAYHURST RANCH 131I=LT(10) 90SR=5	137CS=LT(10)	AM 51237502704913068154 07 02 69 K=1.1E00	89SR=LT(5)	6370020
OLANCHA CALIF HAYHURST RANCH 131I=LT(10) 90SR=2	137CS=LT(10)	PM 51237502704913071543 08 05 69 K=1.2E00	89SR=LT(5)	6370020

NOTE--MILK, WATER, RADON UNITS ARE PCI/L, EXCEPT K=GM/L,  
 FOOD AND FEED UNITS ARE PCI/KGM, EXCEPT K=GM/KGM,  
 SURVEILLANCE AIR RESULTS ARE PCI/M3,  
 SOIL RESULTS ARE PCI/GM,  
 LT(X) DENOTES A RESULT LESS THAN X.

## APPENDIX

## OFF-SITE MILK JULY THROUGH DECEMBER 1969

## COLLECTED

OLANCHA CALIF HAYHURST RANCH 131I=LT(10)                      137CS=LT(10) 90SR=3	PM 51237502704913073119 10 14 69 6370020 K=1.1E00                      89SR=LT(5)
OLANCHA CALIF HAYHURST RANCH 131I=LT(10)                      137CS=LT(10) 90SR=LT(2)	AM 51237502704913074628 12 03 69 6370020 K=1.0E00                      89SR=LT(5)
PACOIMA CALIF GLEN FARMS INC 131I=LT(10)                      137CS=LT(10) 90SR=LT(2)	PM 56249503704912074320 11 18 69                      343 K=1.7E00                      89SR=LT(5)
PACOIMA CALIF GLEN FARMS INC 131I=LT(10)                      137CS=LT(10) CHEM	PM 56249503704912074346 11 19 69                      343 K=1.5E00                      NO
PACOIMA CALIF GLEN FARMS INC 131I=LT(10)                      137CS=LT(10) CHEM	PM 56249503704912074389 11 20 69                      343 K=1.6E00                      NO
PACOIMA CALIF GLEN FARMS INC 131I=LT(10)                      137CS=LT(10) CHEM	PM 56249503704912074390 11 21 69                      343 K=1.5E00                      NO
REDDING CALIF MCCOLL'S DAIRY PROD 131I=LT(10)                      137CS=LT(10) 90SR=4	AM 56276008904912074318 11 19 69                      315 K=1.6E00                      89SR=LT(5)
SAN JOSE CALIF EVERGREEN DAIRY RCH 131I=LT(10)                      137CS=LT(10) 90SR=LT(2)	AM 56307008504912074341 11 21 69                      330 K=1.7E00                      89SR=LT(5)

NOTE--MILK, WATER, RADON UNITS ARE PCI/L, EXCEPT K=GM/L,  
FOOD AND FEED UNITS ARE PCI/KGM, EXCEPT K=GM/KGM,  
SURVEILLANCE AIR RESULTS ARE PCI/M3,  
SOIL RESULTS ARE PCI/GM,  
LT(X) DENOTES A RESULT LESS THAN X.

## APPENDIX

OFF-SITE MILK JULY THROUGH DECEMBER, 1969

COLLECTED

SANTA CLARA CALIF. EDELWEISS DAIRY 131I=LT(10)      137CS=LT(10) 90SR=LT(2)	PM 56318008504912074728 12 07 69 K=1.4E00      89SR=LT(5)	348
SANTA ROSA CALIF. ARLINGTON FARMS 131I=LT(10)      137CS=LT(10) 90SR=2	AM 56324009704912074343 11 19 69 K=1.6E00      89SR=LT(5)	323
SANTA ROSA CALIF. BURBANK DAIRY 131I=LT(10)      137CS=LT(10) 90SR=3	AM 56324009704912074323 11 19 69 K=1.5E00      89SR=LT(5)	324
SHOSHONE CALIF L MESSER 131I=LT(10)      137CS=LT(10) CHEM	AM 52333502704913073345 10 30 69 6932030 K=1.3E00      NO	
SHOSHONE CALIF L MESSER 131I=LT(10)      137CS=LT(10) CHEM	PM 52333502704913073404 10 30 69 6932030 K=1.4E00      NO	
SHOSHONE CALIF L MESSER 131I=LT(100)      137CS=LT(100)	AM 52333502704913073397 10 31 69 6932030 NO      CHEM	
STOCKTON CALIF LUCKY MILK & ICE CRM 131I=LT(10)      137CS=LT(10) 90SR=LT(2)	PM 56351007704912074347 11 18 69 K=1.5E00      89SR=LT(5)	328
SUSANVILLE CALIF MORNING GLORY DAIRY 131I=LT(10)      137CS=LT(10) 90SR=2	PM 56354003504912073995 11 18 69 K=1.3E00      89SR=LT(5)	316

NOTE--MILK, WATER, RADON UNITS ARE PCI/L, EXCEPT K=GM/L,  
FOOD AND FEED UNITS ARE PCI/KGM, EXCEPT K=GM/KGM,  
SURVEILLANCE AIR RESULTS ARE PCI/M3,  
SOIL RESULTS ARE PCI/GM,  
LT(X) DENOTES A RESULT LESS THAN X.



APPENDIX

OFF-SITE MILK JULY THROUGH DECEMBER 1969

COLLECTED

TRACY CALIF DEUEL VOC INST 131I=LT(10)            137CS=LT(10) 90SR=LT(2)	AM 56361007704912074319 11 19 69 K=1.5E00            89SR=LT(5)	350
WATSONVILLE CALIF MONTE VISTA DAIRY 131I=LT(10)            137CS=LT(10) 90SR=2	AM 56374008704912074387 11 22 69 K=1.6E00            89SR=LT(5)	579
WEED CALIF MEDO-BEL CREAMERY 131I=LT(10)            137CS=LT(10) 90SR=6	PM 56375009304912073994 11 17 69 K=1.3E00            89SR=LT(5)	312
WILLOWS CALIF ALTA DAIRIES 131I=LT(10)            137CS=LT(10) 90SR=2	PM 56381002104912074340 11 19 69 K=1.6E00            89SR=LT(5)	319

NOTE--MILK, WATER, RADON UNITS ARE PCI/L, EXCEPT K=GM/L,  
 FOOD AND FEED UNITS ARE PCI/KGM, EXCEPT K=GM/KGM,  
 SURVEILLANCE AIR RESULTS ARE PCI/M3,  
 SOIL RESULTS ARE PCI/GM,  
 LT(X) DENOTES A RESULT LESS THAN X.

## APPENDIX

OFF-SITE MILK JULY THROUGH DECEMBER 1969

COLLECTED

COLLBRAN COLO C W YOUNG DAIRY 131I=LT(10)            137CS=LT(10) 90SR=9	AM 54008807705812072124 08 26 69 7242139 K=1.4E00                    89SR=9
COLLBRAN COLO C W YOUNG DAIRY 131I=LT(10)            137CS=LT(10) 90SR=7	AM 54008807705812072522 09 13 69 8292139 K=1.3E00                    89SR=LT(5)
COLLBRAN COLO C W YOUNG DAIRY 131I=LT(10)            137CS=LT(10) CHEM	AM 54008807705812073774 11 05 69 6992139 K=1.5E00                    NO
COLLBRAN COLO WILLIAM C EARLEY RANCH 131I=LT(10)            137CS=LT(10) 90SR=9	AM 54008807705811072125 08 28 69 2202151 K=1.2E00                    89SR=8
COLLBRAN COLO WILLIAM C EARLEY RANCH 131I=LT(10)            137CS=LT(10) 90SR=7	AM 54008807705811072516 09 13 69 2202151 K=1.3E00                    89SR=9
COLLBRAN COLO WILLIAM C EARLEY RANCH 131I=LT(10)            137CS=2.0E01 CHEM	AM 54008807705811073770 11 05 69 4292151 K=1.1E00                    NO
COLLBRAN COLO ARTHUR LINN RANCH 131I=LT(10)            137CS=LT(10) 90SR=5                    3H=1.4E03	54008807705813072121 08 27 69 2202187 K=1.7E00                    89SR=LT(5) 2SIGMA=4.5E02
COLLBRAN COLO ARTHUR LINN RANCH 131I=LT(10)            137CS=LT(10) 90SR=7                    3H=6.6E02	AM 54008807705813072524 09 13 69 7242187 K=1.7E00                    89SR=LT(5)

NOTE--MILK, WATER, RADON UNITS ARE PCI/L, EXCEPT K=GM/L,  
 FOOD AND FEED UNITS ARE PCI/KGM, EXCEPT K=GM/KGM,  
 SURVEILLANCE AIR RESULTS ARE PCI/M3,  
 SOIL RESULTS ARE PCI/GM,  
 LT(X) DENOTES A RESULT LESS THAN X.

## APPENDIX

OFF-SITE MILK JULY THROUGH DECEMBER 1969

COLLECTED

COLLBRAN COLD ARTHUR LINN RANCH 131I=LT(10)            137CS=1.0E01	AM 54008807705813073776 11 05 69 4232187 K=1.5E00                    3H=7.3E02
COLLBRAN COLD CLIFFORD HILL RANCH 131I=LT(10)            137CS=LT(10) 90SR=3	AM 54008807705813072123 08 26 69 7242190 K=1.7E00                    89SR=LT(5)
COLLBRAN COLD CLIFFORD HILL RANCH 131I=LT(10)            137CS=LT(10) 90SR=4	AM 54008807705813072514 09 13 69 7242190 K=1.8E00                    89SR=LT(5)
COLLBRAN COLD CLIFFORD HILL RANCH 131I=LT(10)            137CS=LT(10) CHEM	AM 54008807705813073779 11 05 69 6292190 K=1.6E00                    NO
GLENWOOD SPRGS COLD ROCK N PINES DAIRYAM 131I=LT(10)            137CS=1.0E01 90SR=2	54022004505812072232 08 30 69 6992456 K=1.5E00                    89SR=5
GLENWOOD SPRGS COLD ROCK N PINES DAIRYAM 131I=LT(10)            137CS=LT(10) 90SR=2	54022004505812072515 09 13 69 7992456 K=1.5E00                    89SR=LT(5)
GLENWOOD SPRGS COLD ROCK N PINES DAIRY 131I=LT(10)            137CS=LT(10) CHEM	54022004505812073772 11 05 69 7992456 K=1.4E00                    NO
GRAND JCT COLD CLYNNS CRESCENT GRAFF 131I=LT(10)            137CS=LT(10) 90SR=8	AM 54024007705811071861 08 14 69 K=1.6E00                    89SR=LT(5)

NOTE--MILK, WATER, RADON UNITS ARE PCI/L, EXCEPT K=GM/L,  
FOOD AND FEED UNITS ARE PCI/KGM, EXCEPT K=GM/KGM,  
SURVEILLANCE AIR RESULTS ARE PCI/M3,  
SOIL RESULTS ARE PCI/GM,  
LT(X) DENOTES A RESULT LESS THAN X.

## APPENDIX

OFF-SITE MILK JULY THROUGH DECEMBER 1969

COLLECTED

GRAND JCT COLO WESTERN COLO MILK PROD AM	54024007705811071862	08 14 69	
131I=LT(10)	137CS=LT(10)	K=1.6E00	89SR=LT(5)
90SR=3			
GRAND JCT COLO WESTERN COLO MILK PROD AM	54024007705811071863	08 14 69	
131I=LT(10)	137CS=LT(10)	K=1.8E00	89SR=LT(5)
90SR=5			
MESA COLO RUPERT W WASSON DAIRY	PM 54037707705812072118	08 27 69	7242014
131I=LT(10)	137CS=LT(10)	K=1.5E00	89SR=6
90SR=4			
MESA COLO RUPERT W WASSON DAIRY	AM 54037707705813072521	09 13 69	2202014
131I=LT(10)	137CS=1.0E01	K=1.1E00	89SR=LT(5)
90SR=3			
MOLINA COLO GLENN TAYLOR DAIRY	PM 54038307705812071937	08 26 69	6992111
131I=LT(10)	137CS=2.0E01	K=1.4E00	89SR=5
90SR=9			
MOLINA COLO GLENN TAYLOR DAIRY	AM 54038307705812072513	09 13 69	6992111
131I=LT(10)	137CS=1.0E01	K=1.6E00	89SR=LT(5)
90SR=5			
MOLINA COLO GLENN TAYLOR DAIRY	AM 54038307705812073775	11 05 69	6992111
131I=LT(10)	137CS=1.0E01	K=1.5E00	NO
CHEM			
MOLINA COLO MRS GEORGE CURRIER RANCH	AM 54038307705813071936	08 26 69	2202189
131I=LT(10)	137CS=LT(10)	K=1.5E00	89SR=6
90SR=7			

NOTE--MILK, WATER, RADON UNITS ARE PCI/L, EXCEPT K=GM/L,  
 FOOD AND FEED UNITS ARE PCI/KGM, EXCEPT K=GM/KGM,  
 SURVEILLANCE AIR RESULTS ARE PCI/M3,  
 SOIL RESULTS ARE PCI/GM,  
 LT(X) DENOTES A RESULT LESS THAN X.

## APPENDIX

OFF-SITE MILK JULY THROUGH DECEMBER 1969

COLLECTED

MOLINA COLO MRS GEORGE CURRIER RANCH 131I=LT(10) 90SR=7	137CS=LT(10) 3H=1.4E03	AM 54038307705813072519 09 13 69 4232189 K=1.5E00 89SR=6
MOLINA COLO MRS GEORGE CURRIER RANCH 131I=LT(10) CHEM	137CS=LT(10)	AM 54038307705813073777 11 05 69 6292189 K=1.4E00 NO
RIFLE COLO ALEX C URGUHART DAIRY 131I=LT(10) 90SR=2	137CS=LT(10)	PM 54041804505812072120 08 29 69 6992177 K=1.4E00 89SR=LT(5)
RIFLE COLO ALEX C URGUHART DAIRY 131I=LT(10) 90SR=4	137CS=1.0E01	AM 54041804505812072523 09 13 69 7992177 K=1.4E00 89SR=LT(5)
RIFLE COLO ALEX C URGUHART DAIRY 131I=LT(10) CHEM	137CS=LT(10)	54041804505812073778 11 05 69 7992177 K=1.4E00 NO
RULISON COLO DONALD BURTARD RANCH 131I=LT(10) 90SR=6	137CS=LT(10) 3H=7.2E02	AM 54042704505813072191 08 31 69 7942005 K=1.4E00 89SR=6
RULISON COLO DONALD BURTARD RANCH 131I=LT(10) 90SR=4.6	137CS=LT(10) 3H=4.9E02	AM 54042704505813072520 09 13 69 4212005 K=1.4E00 89SR=8
RULISON COLO DONALD BURTARD RANCH 131I=LT(100)	137CS=LT(100)	AM 54042704505813073769 11 05 69 4212005 3H=4.7E02

NOTE--MILK, WATER, RADON UNITS ARE PCI/L, EXCEPT K=GM/L,  
 FOOD AND FEED UNITS ARE PCI/KGM, EXCEPT K=GM/KGM,  
 SURVEILLANCE AIR RESULTS ARE PCI/M3,  
 SOIL RESULTS ARE PCI/GM,  
 LT(X) DENOTES A RESULT LESS THAN X.

## APPENDIX

## OFF-SITE MILK JULY THROUGH DECEMBER 1969

## COLLECTED

RULISON COLO FELIX S SEFCOVIC RANCH 131I=LT(10) 137CS=2.0E01 90SR=8	AM 54042704505813072117 08 29 69 2902136 K=1.5E00 89SR=7
RULISON COLO FELIX S SEFCOVIC RANCH 131I=LT(10) 137CS=1.0E01 90SR=11	AM 54042704505813072510 09 13 69 4232136 K=1.3E00 89SR=9
RULISON COLO FELIX S SEFCOVIC RANCH 131I=LT(100) 137CS=LT(100)	AM 54042704505813073773 11 05 69 4232136 NO CHEM
RULISON COLO BILLIE LEE SMITH RANCH 131I=LT(10) 137CS=LT(10) 90SR=5 3H=5.4E02	AM 54042704505813072116 08 28 69 8992138 K=1.4E00 89SR=LT(5) 2SIGMA=3.1E02
RULISON COLO BILLIE LEE SMITH RANCH 131I=LT(10) 137CS=LT(10) 90SR=4 3H=4.1E02	PM 54042704505813072512 09 12 69 4332138 K=1.4E00 89SR=LT(5)
RULISON COLO BILLIE LEE SMITH RANCH 131I=LT(10) 137CS=2.0E01	AM 54042704505813073771 11 05 69 4332138 K=1.2E00 3H=LT4E02
SILT COLO RUFUS RALEY RANCH 131I=LT(10) 137CS=LT(10) 90SR=8	AM 54045104505813072122 08 29 69 8792223 K=1.6E00 89SR=5
SILT COLO RUFUS RALEY RANCH 131I=LT(10) 137CS=LT(10) 90SR=6	AM 54045104505813072511 09 13 69 4232223 K=1.5E00 89SR=5
SILT COLO DON JACKETT RANCH 131I=LT(10) 137CS=1.0E01 90SR=8 3H=1.3E03	PM 54045104505813072119 08 29 69 6992229 K=1.4E00 89SR=LT(5) 2SIGMA=3.3E02

NOTE--MILK, WATER, RADON UNITS ARE PCI/L, EXCEPT K=GM/L,  
FOOD AND FEED UNITS ARE PCI/KGM, EXCEPT K=GM/KGM,  
SURVEILLANCE AIR RESULTS ARE PCI/M3,  
SOIL RESULTS ARE PCI/GM,  
LT(X) DENOTES A RESULT LESS THAN X.

APPENDIX

OFF-SITE MILK JULY THROUGH DECEMBER 1969

COLLECTED

SILT COLO DON JACKETT RANCH 131I=LT(100)            137CS=LT(100)	AM 54045104505813072517 09 13 69 4232229 89SR=5                    90SR=4
SILT COLO EMIL LOPEZ RANCH 131I=LT(10)            137CS=LT(10) CHEM	AM 54045104505813072192 08 30 69 2202296 K=1.3E00                    NO
SILT COLO EMIL LOPEZ RANCH 131I=LT(10)            137CS=LT(10) 90SR=4	AM 54045104505813072518 09 13 69 4332296 K=1.0E00                    89SR=LT(5)

NOTE--MILK, WATER, RADON UNITS ARE PCI/L, EXCEPT K=GM/L,  
FOOD AND FEED UNITS ARE PCI/KGM, EXCEPT K=GM/KGM,  
SURVEILLANCE AIR RESULTS ARE PCI/M3,  
SOIL RESULTS ARE PCI/GM,  
LT(X) DENOTES A RESULT LESS THAN X.

## APPENDIX

## OFF-SITE MILK JULY THROUGH DECEMBER 1969

## COLLECTED

CARROLL IOWA CARROLL CREAMERY CO 131I=LT(10) 137CS=LT(10) 90SR=2	AM 56014002714612071750 08 13 69 K=1.4E00 89SR=LT(5)	517
CORYDON IOWA JONES DAIRY 131I=LT(10) 137CS=1.0E01 90SR=8	AM 56024518514612071721 08 12 69 K=1.5E00 89SR=7	520
DUBUQUE IOWA OAKLAND DAIRY 131I=LT(10) 137CS=LT(10) 90SR=9	PM 56033006114612071777 08 13 69 K=1.5E00 89SR=7	519
LAKE MILLS IOWA LAKE MILLS COOP CRMRY 131I=LT(10) 137CS=LT(10) 90SR=5	AM 56055518914612071725 08 12 69 K=1.4E00 89SR=6	518
LE MARS IOWA WELLS DAIRY 131I=LT(10) 137CS=LT(10) 90SR=9	AM 56057014914612071729 08 13 69 K=1.3E00 89SR=LT(5)	521
MT PLEASANT IOWA KENNEDY'S DAIRY 131I=LT(10) 137CS=LT(10) 90SR=11	PM 56065008714612071722 08 11 69 K=1.6E00 89SR=6	516

NOTE--MILK, WATER, RADON UNITS ARE PCI/L, EXCEPT K=GM/L,  
FOOD AND FEED UNITS ARE PCI/KGM, EXCEPT K=GM/KGM,  
SURVEILLANCE AIR RESULTS ARE PCI/M3,  
SOIL RESULTS ARE PCI/GM,  
LT(X) DENOTES A RESULT LESS THAN X.



## APPENDIX

## OFF-SITE MILK JULY THROUGH DECEMBER 1969

## COLLECTED

GARDEN CITY KAN GARDINER DAIRY 131I=LT(10)      137CS=LT(10) 90SR=2	AM 56029005515612068769 07 22 69 K=1.6E00      89SR=6	454
HUTCHINSON KAN CREAM O'GOLD DAIRY 131I=LT(10)      137CS=1.0E01 90SR=7	AM 56040015515612068949 07 23 69 K=1.5E00      89SR=LT(5)	455
OSAGE CITY KAN JONES DAIRY 131I=LT(10)      137CS=LT(10) 90SR=4	AM 56064513915612068948 07 23 69 K=1.6E00      89SR=LT(5)	453
SALINA KAN ELMORE DAIRY 131I=LT(10)      137CS=LT(10) 90SR=4	PM 56078016915612071751 08 13 69 K=1.6E00      89SR=LT(5)	451
WICHITA KAN SOUTHWEST DAIRYMEN INC 131I=LT(10)      137CS=LT(10) 90SR=3	AM 56086017315612068934 07 24 69 K=1.7E00      89SR=LT(5)	452

NOTE--MILK, WATER, RADON UNITS ARE PCI/L, EXCEPT K=GM/L,  
FOOD AND FEED UNITS ARE PCI/KGM, EXCEPT K=GM/KGM,  
SURVEILLANCE AIR RESULTS ARE PCI/M3,  
SOIL RESULTS ARE PCI/GM,  
LT(X) DENOTES A RESULT LESS THAN X.

## APPENDIX

## OFF-SITE MILK JULY THROUGH DECEMBER 1969

## COLLECTED

ALEXANDRIA LA WALKERS FARMS INC 131I=LT(10) 137CS=LT(10) 90SR=4	AM 56002007917712071356 07 29 69 K=1.5E00 89SR=LT(5)	561
BATON ROUGE LA LOUISIANA STATE UNIV 131I=LT(10) 137CS=1.0E01 90SR=3	AM 56009003317712071318 07 29 69 K=1.4E00 89SR=LT(5)	562
HAMMOND LA SOUTHEASTERN LA COLLEGE 131I=LT(10) 137CS=4.0E01 90SR=6	AM 56036010517712071423 07 29 69 K=1.5E00 89SR=LT(5)	563
JACKSON LA E LOUISIANA STATE HOSPITAL 131I=LT(10) 137CS=LT(10) 90SR=6	AM 56040512517712071353 07 29 69 K=1.5E00 89SR=10	564
LAFAYETTE LA UNIV OF SOUTHWESTERN LA 131I=LT(10) 137CS=LT(10) 90SR=4	PM 56048005517712071349 07 28 69 K=1.4E00 89SR=7	565
LAKE CHARLES LA BORDEN'S 131I=LT(10) 137CS=2.0E01 90SR=4	PM 56051001917712071317 07 28 69 K=1.6E00 89SR=LT(5)	566
MONROE LA BORDEN'S 131I=LT(10) 137CS=LT(10) 90SR=5	PM 56062007317712071350 07 28 69 K=1.5E00 89SR=LT(5)	567
NATCHITOCHE LA NTHWSTRN ST COLLEGE 131I=LT(10) 137CS=LT(10) 90SR=6	AM 56064006917712071354 07 29 69 K=1.6E00 89SR=LT(5)	568

NOTE--MILK, WATER, RADON UNITS ARE PCI/L, EXCEPT K=GM/L,  
FOOD AND FEED UNITS ARE PCI/KGM, EXCEPT K=GM/KGM,  
SURVEILLANCE AIR RESULTS ARE PCI/M3,  
SOIL RESULTS ARE PCI/GM,  
LT(X) DENOTES A RESULT LESS THAN X.

APPENDIX

OFF-SITE MILK JULY THROUGH DECEMBER 1969

COLLECTED

NEW ORLEANS LA BORDEN'S INC	56066007117712071355	07 27 69	569
131I=LT(10) 137CS=2.0E01	K=1.5E00	89SR=6	
90SR=12			
RUSTON LA LOUISIANA POLYTECHNIC INST	PM 56082006117712071352	07 29 69	570
131I=LT(10) 137CS=LT(10)	K=1.4E00	89SR=LT(5)	
90SR=LT(2)			
SHREVEPORT LA FOREMOST DAIRIES	AM 56084001717712071320	07 29 69	571
131I=LT(10) 137CS=2.0E01	K=1.5E00	89SR=5	
90SR=3			
THIBODAUX LA NICOLS STATE COLLEGE	AM 56090005717712071351	07 29 69	572
131I=LT(10) 137CS=LT(10)	K=1.6E00	89SR=LT(5)	
90SR=LT(2)			

NOTE--MILK, WATER, RADON UNITS ARE PCI/L, EXCEPT K=GM/L,  
 FOOD AND FEED UNITS ARE PCI/KGM, EXCEPT K=GM/KGM,  
 SURVEILLANCE AIR RESULTS ARE PCI/M3,  
 SOIL RESULTS ARE PCI/GM,  
 LT(X) DENOTES A RESULT LESS THAN X.

## APPENDIX

OFF-SITE MILK JULY THROUGH DECEMBER 1969

COLLECTED

BEMIDJI MINN BEMIDJI COOP CRMRY ASSN 131I=LT(10) 90SR=14	137CS=6.0E01	PM 56009000722612068941 K=1.6E00	07 23 69 89SR=13	502
BEMIDJI MINN BEMIDJI COOP CRMRY ASSN 131I=LT(10) CHEM	137CS=3.0E01	PM 56009000722612071723 K=1.5E00	08 11 69 NO	502
DALTON MINN DALTON CREAMERY 131I=LT(10) 90SR=7	137CS=1.0E01	AM 56028511122612068943 K=1.4E00	07 23 69 89SR=6	504
FLENSBURG MINN FLENSBURG COOP CRMRY 131I=LT(10) 90SR=15	137CS=8.0E01	AM 56039509722612071727 K=1.5E00	08 12 69 89SR=13	505
NICOLLET MINN NICOLLET CNTY DRY FRMRS 131I=LT(10) 90SR=3	137CS=LT(10)	AM 56075510322612068937 K=1.6E00	07 24 69 89SR=LT(5)	501
ROCHESTER MINN ROCHESTER DAIRY COOP 131I=LT(10) 90SR=7	137CS=1.0E01	AM 56090010922612068947 K=1.6E00	07 23 69 89SR=5	503

NOTE--MILK, WATER, RADON UNITS ARE PCI/L, EXCEPT K=GM/L,  
 FOOD AND FEED UNITS ARE PCI/KGM, EXCEPT K=GM/KGM,  
 SURVEILLANCE AIR RESULTS ARE PCI/M3,  
 SOIL RESULTS ARE PCI/GM,  
 LT(X) DENOTES A RESULT LESS THAN X.

## APPENDIX

## OFF-SITE MILK JULY THROUGH DECEMBER 1969

## COLLECTED

CAPE GIRARDEAU MO SUNNY HILL DAIRY 131I=LT(10)                    137CS=LT(10) 90SR=6	PM 56021003124612068939 07 23 69 K=1.7E00                    89SR=LT(5)	531
JEFFERSON CITY MO CENTRAL DAIRY CO 131I=LT(10)                    137CS=LT(10) 90SR=10	AM 56066005124612068940 07 24 69 K=1.5E00                    89SR=10	532
JOPLIN MO FOREMOST DAIRY 131I=LT(10)                    137CS=1.0E01 90SR=8	AM 56068009724612068945 07 23 69 K=1.6E00                    89SR=10	534
SEDALIA MO TULLIS HALL DAIRY 131I=LT(10)                    137CS=LT(10) 90SR=7	AM 56117015924612068933 07 22 69 K=1.6E00                    89SR=6	533
ST CHARLES MO ST CHARLES DAIRY 131I=LT(10)                    137CS=LT(10) 90SR=6	AM 56123018324612068942 07 23 69 K=1.7E00                    89SR=10	535
ST JOSEPH MO WESTERN DAIRY & ICE CREAM 131I=LT(10)                    137CS=1.0E01 90SR=6	AM 56126002124612068936 07 22 69 K=1.5E00                    89SR=7	536

NOTE--MILK, WATER, RADON UNITS ARE PCI/L, EXCEPT K=GM/L,  
FOOD AND FEED UNITS ARE PCI/KGM, EXCEPT K=GM/KGM,  
SURVEILLANCE AIR RESULTS ARE PCI/M3,  
SOIL RESULTS ARE PCI/GM,  
LT(X) DENOTES A RESULT LESS THAN X.

## APPENDIX

## OFF-SITE MILK JULY THROUGH DECEMBER 1969

## COLLECTED

FREMONT NEB FREMONT DAIRY 131I=LT(10)      137CS=LT(10) 90SR=5	PM 56014005326612071726 08 10 69 K=1.6E00      89SR=5	436
HASTINGS NEB ABBOTTS DAIRY 131I=LT(10)      137CS=LT(10) 90SR=7	PM 56018000126612068938 07 23 69 K=1.7E00      89SR=8	437
NORFOLK NEB GILLETTE DAIRY 131I=LT(100)      137CS=LT(100)	AM 56026011926612068984 07 26 69 89SR=7      90SR=9	438
NORTH PLATTE NEB FAIRMONT FOODS CO 131I=LT(10)      137CS=LT(10) 90SR=5	AM 56027011126612071700 08 12 69 K=1.6E00      89SR=7	439

NOTE--MILK, WATER, RADON UNITS ARE PCI/L, EXCEPT K=GM/L,  
FOOD AND FEED UNITS ARE PCI/KGM, EXCEPT K=GM/KGM,  
SURVEILLANCE AIR RESULTS ARE PCI/M3,  
SOIL RESULTS ARE PCI/GM,  
LT(X) DENOTES A RESULT LESS THAN X.

## APPENDIX

OFF-SITE MILK JULY THROUGH DECEMBER 1969

COLLECTED

ALAMO NEV SEIP DAIRY 131I=LT(10) 90SR=5	137CS=1.0E01	PM 51014001727912068496 07 10 69 9990079 K=1.4E00 89SR=11
ALAMO NEV SEIP DAIRY 131I=LT(10) 90SR=4	137CS=1.0E01	AM 51014001727912071526 08 07 69 3900079 K=1.5E00 89SR=LT(5)
ALAMO NEV SEIP DAIRY 131I=LT(10) 90SR=4	137CS=2.0E01	AM 51014001727912072637 09 25 69 6990079 K=1.5E00 89SR=5
ALAMO NEV SEIP DAIRY 131I=LT(10) 90SR=2	137CS=1.0E01	AM 51014001727912072909 10 09 69 6990079 K=1.7E00 89SR=LT(5)
ALAMO NEV SEIP DAIRY 131I=LT(10) 90SR=4	137CS=LT(10)	AM 51014001727912073900 11 14 69 6990079 K=1.5E00 89SR=LT(5)
ALAMO NEV SEIP DAIRY 131I=LT(10) 90SR=LT(2)	137CS=LT(10)	AM 51014001727912074512 12 04 69 6990079 K=1.6E00 89SR=LT(5)
ALAMO NEV KAY WRIGHT DAIRY 131I=LT(10) CHEM	137CS=LT(10)	AM 52014001727912072455 09 13 69 9992080 K=1.5E00 NO
ALAMO NEV KAY WRIGHT DAIRY 131I=LT(10) CHEM	137CS=2.0E01	52014001727912072464 09 14 69 9992080 K=1.5E00 NO

NOTE--MILK, WATER, RADON UNITS ARE PCI/L, EXCEPT K=GM/L,  
FOOD AND FEED UNITS ARE PCI/KGM, EXCEPT K=GM/KGM,  
SURVEILLANCE AIR RESULTS ARE PCI/M3,  
SOIL RESULTS ARE PCI/GM,  
LT(X) DENOTES A RESULT LESS THAN X.

## APPENDIX

OFF-SITE MILK JULY THROUGH DECEMBER 1969

COLLECTED

ALAMO NEV KAY WRIGHT DAIRY 131I=LT(10)            137CS=LT(10) CHEM.	AM 52014001727912072465 09 14 69 9992080 K=1.4E00                            NO
AUSTIN NEV YOUNG'S RANCH 131I=LT(10)            137CS=LT(10) 90SR=2	AM 51018701527913068400 07 08 69 1930010 K=1.5E00                            89SR=LT(5)
AUSTIN NEV YOUNG'S RANCH 131I=LT(10)            137CS=1.0E01 90SR=7	AM 51018701527913071635 08 07 69 1910010 K=1.6E00                            89SR=LT(5)
AUSTIN NEV YOUNG'S RANCH 131I=LT(10)            137CS=LT(10) 90SR=5	AM 51018701527913072350 09 02 69 1910010 K=1.6E00                            89SR=LT(5)
AUSTIN NEV YOUNG'S RANCH 131I=LT(10)            137CS=LT(10) 90SR=6	AM 51018701527913073022 10 08 69 1910010 K=1.5E00                            89SR=LT(5)
AUSTIN NEV YOUNG'S RANCH 131I=LT(10)            137CS=LT(10) 90SR=6	AM 51018701527913073695 11 05 69 1910010 K=1.5E00                            89SR=LT(5)
AUSTIN NEV YOUNG'S RANCH 131I=LT(10)            137CS=LT(10) 90SR=4	AM 51018701527913074738 12 09 69 1310010 K=1.5E00                            89SR=LT(5)
AUSTIN NEV TRIPLE T RANCH 131I=LT(10)            137CS=1.0E01 90SR=2	AM 51018702327913068399 07 09 69 1930016 K=1.5E00                            89SR=8

NOTE--MILK, WATER, RADON UNITS ARE PCI/L, EXCEPT K=GM/L,  
 FOOD AND FEED UNITS ARE PCI/KGM, EXCEPT K=GM/KGM,  
 SURVEILLANCE AIR RESULTS ARE PCI/M3,  
 SOIL RESULTS ARE PCI/GM,  
 LT(X) DENOTES A RESULT LESS THAN X.



## APPENDIX

OFF-SITE MILK JULY THROUGH DECEMBER 1969

COLLECTED

AUSTIN NEV TRIPLE T RANCH 131I=LT(10)      137CS=1.0E01 90SR=2	AM 51018702327913071639 08 07 69 1910016 K=1.6E00      89SR=LT(5)
AUSTIN NEV TRIPLE T RANCH 131I=LT(10)      137CS=1.0E01 90SR=2	PM 51018702327913072349 09 01 69 1910016 K=1.6E00      89SR=LT(5)
BATTLE MT NEV T LAZY S RANCH 131I=LT(10)      137CS=2.0E01 90SR=4	PM 51020801527913068951 07 21 69 6990050 K=1.5E00      89SR=12
BATTLE MT NEV T LAZY S RANCH 131I=LT(10)      137CS=2.0E01 90SR=5	PM 51020801527913071617 08 05 69 6990050 K=1.3E00      89SR=8
BATTLE MT NEV T LAZY S RANCH 131I=LT(10)      137CS=LT(10) 90SR=2	PM 51020801527913073887 11 12 69 6990050 K=1.7E00      89SR=LT(5)
BATTLE MT NEV T LAZY S RANCH 131I=LT(10)      137CS=LT(10) 90SR=3	AM 51020801527913074607 12 03 69 6990050 K=1.6E00      89SR=LT(5)
BELMONT NEV PINE CREEK RANCH 131I=LT(10)      137CS=4.0E01 90SR=8	PM 51021402327913071636 08 05 69 4910020 K=1.5E00      89SR=15
BELMONT NEV PINE CREEK RANCH 131I=LT(10)      137CS=3.0E01 90SR=7	AM 51021402327913072347 09 02 69 1910020 K=1.6E00      89SR=13

NOTE--MILK, WATER, RADON UNITS ARE PCI/L, EXCEPT K=GM/L,  
FOOD AND FEED UNITS ARE PCI/KGM, EXCEPT K=GM/KGM,  
SURVEILLANCE AIR RESULTS ARE PCI/M3,  
SOIL RESULTS ARE PCI/GM,  
LT(X) DENOTES A RESULT LESS THAN X.

## APPENDIX

OFF-SITE MILK JULY THROUGH DECEMBER 1969

COLLECTED

BELMONT NEV PINE CREEK RANCH 131I=LT(10)            137CS=3.0E01 90SR=17	AM 51021402327913073027 10 08 69 1910020 K=1.7E00            89SR=7
BELMONT NEV PINE CREEK RANCH 131I=LT(10)            137CS=LT(10) 90SR=12	AM 51021402327913073697 11 04 69 1910020 K=1.5E00            89SR=LT(5)
BELMONT NEV PINE CREEK RANCH 131I=LT(10)            137CS=3.0E01 90SR=10	AM 51021402327913074736 12 09 69 1310020 K=1.6E00            89SR=LT(5)
CALIENTE NEV YOUNG RANCH 131I=LT(10)            137CS=LT(10) 90SR=5	PM 51030401727913068494 07 10 69 8990067 K=1.0E00            89SR=8
CALIENTE NEV YOUNG RANCH 131I=LT(10)            137CS=LT(10) 90SR=2	PM 51030401727913072906 10 08 69 6990067 K=1.7E00            89SR=LT(5)
CALIENTE NEV YOUNG RANCH 131I=LT(10)            137CS=LT(10) 90SR=2	PM 51030401727913073902 11 13 69 8990067 K=1.6E00            89SR=LT(5)
CALIENTE NEV YOUNG RANCH 131I=LT(10)            137CS=LT(10) 90SR=LT(2)	PM 51030401727913074519 12 02 69 6990067 K=1.4E00            89SR=LT(5)
CURRENT NEV BLUE EAGLE RANCH 131I=LT(10)            137CS=1.0E01 90SR=2	AM 51038602327913068488 07 10 69 8790099 K=2.2E00            89SR=7

NOTE--MILK, WATER, RADON UNITS ARE PCI/L, EXCEPT K=GM/L,  
 FOOD AND FEED UNITS ARE PCI/KGM, EXCEPT K=GM/KGM,  
 SURVEILLANCE AIR RESULTS ARE PCI/M3,  
 SOIL RESULTS ARE PCI/GM,  
 LT(X) DENOTES A RESULT LESS THAN X.

## APPENDIX

OFF-SITE MILK JULY THROUGH DECEMBER 1969

COLLECTED

CURRENT NEV BLUE EAGLE RANCH 131I=LT(10)            137CS=2.0E01 90SR=5	AM 51038602327913074375 11 20 69 6990099 K=1.7E00                    89SR=LT(5)
CURRENT NEV BLUE EAGLE RANCH 131I=LT(10)            137CS=LT(10) 90SR=4	AM 51038602327913074584 12 04 69 6990099 K=1.4E00                    89SR=LT(5)
CURRIE NEV BILL LEAR RANCH 131I=LT(100)            137CS=LT(100)	AM 51038800727913074604 12 01 69 1210048 89SR=LT(5)                    90SR=7
CURRIE NEV KITT LEAR RANCH 131I=LT(10)            137CS=2.0E01 90SR=3	AM 51038800727913073020 10 09 69 1210100 K=1.7E00                    89SR=8
DEETH NEV LOTSPEICH RANCH 131I=LT(10)            137CS=LT(10) 90SR=7	AM 51041100727913073019 10 09 69 6990136 K=1.5E00                    89SR=8
DEETH NEV LOTSPEICH RANCH 131I=LT(10)            137CS=1.0E01 90SR=6	AM 51041100727913073889 11 12 69 6990136 K=1.6E00                    89SR=5
DEETH NEV LOTSPEICH RANCH 131I=LT(10)            137CS=2.0E01 90SR=7	PM 51041100727913074606 12 01 69 6990136 K=1.5E00                    89SR=LT(5)
DUCKWATER NEV HALSTEAD RANCH 131I=LT(10)            137CS=2.0E01 90SR=3	AM 51048002327913068486 07 09 69 8290105 K=1.7E00                    89SR=23

NOTE--MILK, WATER, RADON UNITS ARE PCI/L, EXCEPT K=GM/L,  
 FOOD AND FEED UNITS ARE PCI/KGM, EXCEPT K=GM/KGM,  
 SURVEILLANCE AIR RESULTS ARE PCI/M3,  
 SOIL RESULTS ARE PCI/GM,  
 LT(X) DENOTES A RESULT LESS THAN X.

## APPENDIX

OFF-SITE MILK JULY THROUGH DECEMBER 1969

COLLECTED

DUCKWATER NEV HALSTEAD RANCH 131I=LT(10)      137CS=LT(10) 90SR=3	AM 51048002327913071783 08 12 69 8290105 K=1.4E00      89SR=LT(5)
DUCKWATER NEV HALSTEAD RANCH 131I=LT(10)      137CS=LT(10) CHEM	AM 53048002327913072090 08 30 69 2202105 K=1.6E00      NO
DUCKWATER NEV HALSTEAD RANCH 131I=LT(10)      137CS=LT(10) CHEM	AM 53048002327913072244 09 03 69 2202105 K=1.6E00      NO
DUCKWATER NEV HALSTEAD RANCH 131I=LT(10)      137CS=LT(10) 90SR=2	AM 51048002327913072728 09 25 69 6230105 K=1.5E00      89SR=LT(5)
DUCKWATER NEV HALSTEAD RANCH 131I=LT(10)      137CS=LT(10) 90SR=4	PM 51048002327913074376 11 18 69 1230105 K=1.3E00      89SR=LT(5)
DUCKWATER NEV HALSTEAD RANCH 131I=LT(10)      137CS=2.0E01 90SR=2	AM 51048002327913074585 12 04 69 4230105 K=1.1E00      89SR=LT(5)
ELKO NEV ANCHOR S RANCH 131I=LT(10)      137CS=1.0E01 90SR=5	AM 51054400727913068952 07 23 69 6990194 K=1.4E00      89SR=10
ELKO NEV ANCHOR S RANCH 131I=LT(10)      137CS=3.0E01 90SR=4	51054400727913071619 08 06 69 6990194 K=1.4E00      89SR=6

NOTE--MILK, WATER, RADON UNITS ARE PCI/L, EXCEPT K=GM/L,  
FOOD AND FEED UNITS ARE PCI/KGM, EXCEPT K=GM/KGM,  
SURVEILLANCE AIR RESULTS ARE PCI/M3,  
SOIL RESULTS ARE PCI/GM,  
LT(X) DENOTES A RESULT LESS THAN X.

## APPENDIX

OFF-SITE MILK JULY THROUGH DECEMBER 1969

COLLECTED

ELKO NEV ANCHOR S RANCH 131I=LT(10)                      137CS=LT(10) 90SR=LT(2)	AM 51054400727913073018 10 09 69 6990194 K=1.8E00                              89SR=LT(5)
ELKO NEV ANCHOR S RANCH 131I=LT(100)                      137CS=LT(100)	AM 51054400727913073888 11 13 69 6990194 89SR=8                                      90SR=2
EUREKA NEV MARTIN RANCH 131I=LT(10)                      137CS=2.0E01 90SR=8	AM 51058602327913068398 07 07 69 1930079 K=1.7E00                              89SR=22
EUREKA NEV MARTIN RANCH 131I=LT(10)                      137CS=2.0E01 90SR=8	AM 51058602327913071637 08 06 69 1910079 K=1.5E00                              89SR=12
EUREKA NEV MARTIN RANCH 131I=LT(10)                      137CS=LT(10) 90SR=5	AM 51058602327913072346 09 02 69 1910079 K=2.1E00                              89SR=7
EUREKA NEV MARTIN RANCH 131I=LT(10)                      137CS=2.0E01 90SR=8	AM 51058602327913073021 10 08 69 1910079 K=1.8E00                              89SR=LT(5)
EUREKA NEV MARTIN RANCH 131I=LT(10)                      137CS=LT(10) 90SR=8	AM 51058602327913073696 11 04 69 1910079 K=1.6E00                              89SR=LT(5)
EUREKA NEV MARTIN RANCH 131I=LT(10)                      137CS=4.0E01 90SR=7	PM 51058602327913074737 12 09 69 1210079 K=1.8E00                              89SR=LT(5)

NOTE--MILK, WATER, RADON UNITS ARE PCI/L, EXCEPT K=GM/L,  
 FOOD AND FEED UNITS ARE PCI/KGM, EXCEPT K=GM/KGM,  
 SURVEILLANCE AIR RESULTS ARE PCI/M3,  
 SOIL RESULTS ARE PCI/GM,  
 LT(X) DENOTES A RESULT LESS THAN X.

## APPENDIX

OFF-SITE MILK JULY THROUGH DECEMBER 1969

COLLECTED

FALLON NEV CREAMLAND DAIRY 131I=LT(10)      137CS=LT(10) 90SR=4	AM 56060400127912074795 12 16 69 K=1.5E00      89SR=LT(5)	353
GENOA NEV MEADOW GOLD DAIRY 131I=LT(10)      137CS=LT(10) 90SR=3	PM 56071500527912074817 12 17 69 K=1.3E00      89SR=LT(5)	354
HIKO NEV SCHOFIELD DAIRY 131I=LT(10)      137CS=LT(10) 90SR=2      3H=LT4E02	AM 51083401727912068493 07 11 69 K=1.6E00      89SR=LT(5)	9990057
HIKO NEV SCHOFIELD DAIRY 131I=LT(10)      137CS=LT(10) 90SR=2      3H=LT4E02	AM 51083401727912071527 08 07 69 K=1.3E00      89SR=LT(5)	9990057
HIKO NEV SCHOFIELD DAIRY 131I=LT(10)      137CS=LT(10) CHEM	AM 52083401727912072456 09 13 69 K=1.3E00      NO	9992057
HIKO NEV SCHOFIELD DAIRY 131I=LT(10)      137CS=LT(10) CHEM	PM 52083401727912072462 09 13 69 K=1.4E00      NO	9992057
HIKO NEV SCHOFIELD DAIRY 131I=LT(10)      137CS=LT(10) CHEM	AM 52083401727912072463 09 14 69 K=1.5E00      NO	9992057
HIKO NEV SCHOFIELD DAIRY 131I=LT(10)      137CS=LT(10) 90SR=LT(2)      3H=LT4E02	AM 51083401727912072638 09 25 69 K=1.3E00      89SR=LT(5)	9990057

NOTE--MILK, WATER, RADON UNITS ARE PCI/L, EXCEPT K=GM/L,  
 FOOD AND FEED UNITS ARE PCI/KGM, EXCEPT K=GM/KGM,  
 SURVEILLANCE AIR RESULTS ARE PCI/M3,  
 SOIL RESULTS ARE PCI/GM,  
 LT(X) DENOTES A RESULT LESS THAN X.

## APPENDIX

OFF-SITE MILK JULY THROUGH DECEMBER 1969

COLLECTED

HIKO NEV SCHOFIELD DAIRY 131I=LT(10) 90SR=2	137CS=1.0E01 3H=LT4E02	AM 51083401727912072908 10 09 69 6990057 K=1.6E00 89SR=LT(5)
HIKO NEV SCHOFIELD DAIRY 131I=LT(10) 90SR=4	137CS=LT(10) 3H=LT4E02	AM 51083401727912073899 11 14 69 6990057 K=1.5E00 89SR=LT(5)
HIKO NEV SCHOFIELD DAIRY 131I=LT(10) 89SR=LT(5)	137CS=LT(10) 90SR=LT(2)	AM 51083401727912074522 12 04 69 6990057 K=1.4E00 3H=LT4E02
INDIAN SPRINGS NEV INDIAN SPRINGS RCH 131I=LT(10) 90SR=LT(2)	137CS=LT(10)	AM 51095100327913068428 07 08 69 6790203 K=1.7E00 89SR=LT(5)
INDIAN SPRINGS NEV INDIAN SPRINGS RCH 131I=LT(10) 90SR=LT(2)	137CS=LT(10)	AM 51095100327913071564 08 05 69 6790203 K=1.6E00 89SR=LT(5)
INDIAN SPRINGS NEV INDIAN SPRINGS RCH 131I=LT(10) 90SR=LT(2)	137CS=LT(10)	AM 51095100327913072324 09 02 69 6790203 K=1.7E00 89SR=LT(5)
LAS VEGAS NEV LDS DAIRY FARMS 131I=LT(10) 90SR=3	137CS=LT(10)	AM 51120700327912068585 07 15 69 9990129 K=1.65E00 89SR=LT(5)
LAS VEGAS NEV LDS DAIRY FARMS 131I=LT(10) 90SR=LT(2)	137CS=LT(10)	AM 51120700327912071675 08 11 69 9990129 K=1.3E00 89SR=LT(5)

NOTE--MILK, WATER, RADON UNITS ARE PCI/L, EXCEPT K=GM/L,  
 FOOD AND FEED UNITS ARE PCI/KGM, EXCEPT K=GM/KGM,  
 SURVEILLANCE AIR RESULTS ARE PCI/M3,  
 SOIL RESULTS ARE PCI/GM,  
 LT(X) DENOTES A RESULT LESS THAN X.

## APPENDIX

OFF-SITE MILK JULY THROUGH DECEMBER 1969

COLLECTED

LAS VEGAS NEV LDS DAIRY FARMS 131I=LT(10)      137CS=LT(10) 90SR=LT(2)	AM 51120700327912072602 09 22 69 9990129 K=1.6E00      89SR=LT(5)
LAS VEGAS NEV LDS DAIRY FARMS 131I=LT(10)      137CS=LT(10) 90SR=LT(2)	AM 51120700327912073023 10 13 69 6990129 K=1.4E00      89SR=LT(5)
LAS VEGAS NEV LDS DAIRY FARMS 131I=LT(10)      137CS=LT(10) 90SR=LT(2)	AM 51120700327912073989 11 18 69 6990129 K=1.5E00      89SR=LT(5)
LAS VEGAS NEV LDS DAIRY FARMS 131I=LT(10)      137CS=LT(10) 90SR=LT(2)	AM 51120700327912074671 12 09 69 6990129 K=1.6E00      89SR=LT(5)
LAS VEGAS NEV ANDERSON DAIRY 131I=LT(10)      137CS=LT(10) 90SR=3	AM 51120700327911068586 07 15 69 0000302 K=1.6E00      89SR=6
LAS VEGAS NEV ANDERSON DAIRY 131I=LT(10)      137CS=2.0E01 90SR=2	AM 51120700327911071673 08 11 69 0000302 K=1.5E00      89SR=LT(5)
LAS VEGAS NEV ANDERSON DAIRY 131I=LT(10)      137CS=LT(10) 90SR=2	PM 51120700327911072603 09 22 69 0000302 K=1.3E00      89SR=LT(5)
LAS VEGAS NEV ANDERSON DAIRY 131I=LT(10)      137CS=LT(10) 90SR=2	AM 51120700327911073025 10 13 69 0000302 K=1.6E00      89SR=LT(5)

NOTE--MILK, WATER, RADON UNITS ARE PCI/L, EXCEPT K=GM/L,  
 FOOD AND FEED UNITS ARE PCI/KGM, EXCEPT K=GM/KGM,  
 SURVEILLANCE AIR RESULTS ARE PCI/M3,  
 SOIL RESULTS ARE PCI/GM,  
 LT(X) DENOTES A RESULT LESS THAN X.



## APPENDIX

## OFF-SITE MILK JULY THROUGH DECEMBER 1969

## COLLECTED

LAS VEGAS NEV ANDERSON DAIRY 131I=LT(10)            137CS=LT(10) 90SR=2	AM 51120700327911073988 11 18 69 0000302 K=1.6E00            89SR=LT(5)
LAS VEGAS NEV ANDERSON DAIRY 131I=LT(10)            137CS=LT(10) 90SR=LT(2)	AM 51120700327911074672 12 09 69 0000302 K=1.4E00            89SR=LT(5)
LAS VEGAS NEV ARDEN DAIRY 131I=LT(10)            137CS=LT(10) 90SR=2	AM 51120700327911068587 07 15 69 0000303 K=1.4E00            89SR=LT(5)
LAS VEGAS NEV ARDEN DAIRY 131I=LT(10)            137CS=LT(10) 90SR=LT(2)            3H=LT4E02	AM 51120700327911071674 08 11 69 0000303 K=1.5E00            89SR=LT(5)
LAS VEGAS NEV ARDEN DAIRY 131I=LT(10)            137CS=LT(10) 90SR=LT(2)	AM 51120700327911072604 09 22 69 0000303 K=1.5E00            89SR=LT(5)
LAS VEGAS NEV ARDEN DAIRY 131I=LT(10)            137CS=LT(10) 90SR=LT(2)	AM 51120700327911073024 10 13 69 0000303 K=1.6E00            89SR=LT(5)
LAS VEGAS NEV ARDEN DAIRY 131I=LT(10)            137CS=LT(10) 90SR=3	AM 51120700327911073987 11 18 69 0000303 K=1.5E00            89SR=LT(5)
LAS VEGAS NEV ARDEN DAIRY 131I=LT(10)            137CS=LT(10) 90SR=LT(2)	AM 51120700327911074673 12 09 69 0000303 K=1.7E00            89SR=LT(5)

NOTE--MILK, WATER, RADON UNITS ARE PCI/L, EXCEPT K=GM/L,  
FOOD AND FEED UNITS ARE PCI/KGM, EXCEPT K=GM/KGM,  
SURVEILLANCE AIR RESULTS ARE PCI/M3,  
SOIL RESULTS ARE PCI/GM,  
LT(X) DENOTES A RESULT LESS THAN X.

## APPENDIX

OFF-SITE MILK JULY THROUGH DECEMBER 1969

COLLECTED

LATHROP WELLS NEV DANSBY'S RANCH 131I=LT(10)            137CS=LT(10) 90SR=LT(2)	AM 51120902327913068430 07 09 69 6990065 K=1.3E00            89SR=LT(5)
LATHROP WELLS NEV DANSBY'S RANCH 131I=LT(10)            137CS=LT(10) 90SR=LT(2)	AM 51120902327913071565 08 06 69 6990065 K=1.5E00            89SR=LT(5)
LATHROP WELLS NEV DANSBY'S RANCH 131I=LT(10)            137CS=LT(10) 90SR=2	AM 51120902327913072325 09 04 69 6990065 K=1.5E00            89SR=LT(5)
LATHROP WELLS NEV DANSBY'S RANCH 131I=LT(10)            137CS=LT(10) 90SR=2	AM 51120902327913072903 10 08 69 6990065 K=1.6E00            89SR=LT(5)
LATHROP WELLS NEV DANSBY'S RANCH 131I=LT(10)            137CS=LT(10) CHEM	AM 52120902327913073362 10 30 69 1932065 K=1.4E00            NO
LATHROP WELLS NEV DANSBY'S RANCH 131I=LT(10)            137CS=LT(10) 90SR=LT(2)	PM 51120902327913073916 11 11 69 6990065 K=1.4E00            89SR=LT(5)
LATHROP WELLS NEV DANSBY'S RANCH 131I=LT(10)            137CS=LT(10) 90SR=LT(2)	AM 51120902327913074511 12 03 69 6990065 K=1.5E00            89SR=LT(5)
LIDA NEV LIDA LIVESTOCK 131I=LT(10)            137CS=LT(10) 90SR=5	AM 51123000927913068397 07 03 69 1930001 K=1.6E00            89SR=9

NOTE--MILK, WATER, RADON UNITS ARE PCI/L, EXCEPT K=GM/L,  
 FOOD AND FEED UNITS ARE PCI/KGM, EXCEPT K=GM/KGM,  
 SURVEILLANCE AIR RESULTS ARE PCI/M3,  
 SOIL RESULTS ARE PCI/GM,  
 LT(X) DENOTES A RESULT LESS THAN X.

## APPENDIX

## OFF-SITE MILK JULY THROUGH DECEMBER 1969

## COLLECTED

LIDA NEV LIDA LIVESTOCK 131I=LT(10)            137CS=LT(10) 90SR=11	AM 51123000927913071638 08 04 69 1930001 K=1.5E00            89SR=LT(5)
LIDA NEV LIDA LIVESTOCK 131I=LT(10)            137CS=LT(10) 90SR=6	AM 51123000927913072348 09 01 69 1910001 K=1.4E00            89SR=LT(5)
LIDA NEV LIDA LIVESTOCK 131I=LT(100)           137CS=LT(100)	AM 51123000927913073026 10 07 69 1910001 89SR=LT(5)            90SR=8
LIDA NEV LIDA LIVESTOCK 131I=LT(10)            137CS=LT(10) 90SR=8	AM 51123000927913073694 11 03 69 1910001 K=1.3E00            89SR=LT(5)
LIDA NEV LIDA LIVESTOCK 131I=LT(10)            137CS=LT(10) 90SR=5	AM 51123000927913074735 12 08 69 1910001 K=1.2E00            89SR=LT(5)
LOGANDALE NEV VEGAS VALLEY DAIRY 131I=LT(10)            137CS=LT(10) 90SR=3	AM 51125200327912068156 07 01 69 0000301 K=1.7E00            89SR=LT(5)
LOGANDALE NEV VEGAS VALLEY DAIRY 131I=LT(10)            137CS=LT(10) 90SR=2	AM 51125200327912071778 08 13 69 0000301 K=1.5E00            89SR=LT(5)
LOGANDALE NEV VEGAS VALLEY DAIRY 131I=LT(10)            137CS=LT(10) 90SR=LT(2)	AM 51125200327912072685 09 22 69 0000301 K=1.6E00            89SR=LT(5)

NOTE--MILK, WATER, RADON UNITS ARE PCI/L, EXCEPT K=GM/L,  
FOOD AND FEED UNITS ARE PCI/KGM, EXCEPT K=GM/KGM,  
SURVEILLANCE AIR RESULTS ARE PCI/M3,  
SOIL RESULTS ARE PCI/GM,  
LT(X) DENOTES A RESULT LESS THAN X.

## APPENDIX

OFF-SITE MILK JULY THROUGH DECEMBER 1969

COLLECTED

LOGANDALE NEV VEGAS VALLEY DAIRY 131I=LT(10)            137CS=2.0E01 90SR=3	AM 51125200327912073005 10 07 69 0000301 K=1.5E00                    89SR=LT(5)
LOGANDALE NEV VEGAS VALLEY DAIRY 131I=LT(10)            137CS=LT(10) 90SR=LT(2)	AM 51125200327912073740 11 04 69 0000301 K=1.6E00                    89SR=LT(5)
LOGANDALE NEV VEGAS VALLEY DAIRY 131I=LT(10)            137CS=2.0E01 90SR=2	AM 51125200327912074515 12 01 69 0000301 K=1.6E00                    89SR=LT(5)
LUND NEV MCKENZIE DAIRY 131I=LT(10)            137CS=1.0E01 90SR=2	AM 51128503327912068484 07 08 69 6990077 K=1.6E00                    89SR=8
LUND NEV MCKENZIE DAIRY 131I=LT(10)            137CS=1.0E01 90SR=4	AM 51128503327912071785 08 13 69 6990077 K=1.3E00                    89SR=5
LUND NEV MCKENZIE DAIRY 131I=LT(10)            137CS=LT(10) CHEM	AM 53128503327912072091 08 30 69 1412077 K=1.6E00                    NO
LUND NEV MCKENZIE DAIRY 131I=LT(10)            137CS=1.0E01 CHEM	AM 53128503327912072248 09 01 69 1412077 K=1.6E00                    NO
LUND NEV MCKENZIE DAIRY 131I=LT(10)            137CS=1.0E01 90SR=3	AM 51128503327912072730 09 23 69 6990077 K=1.5E00                    89SR=LT(5)

NOTE--MILK, WATER, RADON UNITS ARE PCI/L, EXCEPT K=GM/L,  
 FOOD AND FEED UNITS ARE PCI/KGM, EXCEPT K=GM/KGM,  
 SURVEILLANCE AIR RESULTS ARE PCI/M3,  
 SOIL RESULTS ARE PCI/GM,  
 LT(X) DENOTES A RESULT LESS THAN X.

## APPENDIX

## OFF-SITE MILK JULY THROUGH DECEMBER 1969

## COLLECTED

LUND NEV MCKENZIE DAIRY 131I=LT(10)      137CS=LT(10) 90SR=3	AM 51128503327912073159 10 16 69 6990077 K=1.3E00      89SR=LT(5)
LUND NEV MCKENZIE DAIRY 131I=LT(10)      137CS=LT(10) 90SR=2	AM 51128503327912074378 11 18 69 6990077 K=1.4E00      89SR=LT(5)
LUND NEV MCKENZIE DAIRY 131I=LT(10)      137CS=LT(10) 90SR=LT(2)	AM 51128503327912074586 12 03 69 6990077 K=1.4E00      89SR=LT(5)
MCGILL NEV LARSEN RANCH 131I=LT(10)      137CS=1.0E01 90SR=LT(2)	AM 51130303327913068485 07 08 69 6990030 K=1.8E00      89SR=LT(5)
MCGILL NEV LARSEN RANCH 131I=LT(10)      137CS=LT(10) 90SR=3	AM 51130303327913071784 08 13 69 6990030 K=1.5E00      89SR=LT(5)
MCGILL NEV LARSEN RANCH 131I=LT(10)      137CS=LT(10) 90SR=2	AM 51130303327913072732 09 24 69 6990030 K=1.5E00      89SR=LT(5)
MCGILL NEV LARSEN RANCH 131I=LT(10)      137CS=LT(10) 90SR=2	AM 51130303327913073158 10 16 69 6990030 K=1.5E00      89SR=LT(5)
MCGILL NEV LARSEN RANCH 131I=LT(10)      137CS=LT(10) 90SR=2	AM 51130303327913074379 11 17 69 6990030 K=1.6E00      89SR=LT(5)

NOTE--MILK, WATER, RADON UNITS ARE PCI/L, EXCEPT K=GM/L,  
 FOOD AND FEED UNITS ARE PCI/KGM, EXCEPT K=GM/KGM,  
 SURVEILLANCE AIR RESULTS ARE PCI/M3,  
 SOIL RESULTS ARE PCI/GM,  
 LT(X) DENOTES A RESULT LESS THAN X.

## APPENDIX

## OFF-SITE MILK JULY THROUGH DECEMBER 1969

## COLLECTED

MCGILL NEV LARSEN RANCH 131I=LT(10)            137CS=1.0E01 90SR=3	AM 5113030327913074587 12 02 69 6990030 K=1.4E00                    89SR=LT(5)
MESQUITE NEV HUGHES BROS DAIRY 131I=LT(10)            137CS=LT(10) 90SR=4	AM 51131600327912068159 07 01 69 9380062 K=1.4E00                    89SR=LT(5)
MESQUITE NEV HUGHES BROS DAIRY 131I=LT(10)            137CS=LT(10) 90SR=2	PM 51131600327912071779 08 13 69 9380062 K=1.6E00                    89SR=LT(5)
MESQUITE NEV HUGHES BROS DAIRY 131I=LT(10)            137CS=LT(10) 90SR=LT(2)	AM 51131600327912072683 09 22 69 9380062 K=1.5E00                    89SR=LT(5)
MESQUITE NEV HUGHES BROS DAIRY 131I=LT(10)            137CS=2.0E01 90SR=LT(2)	PM 51131600327912073004 10 09 69 9380062 K=1.5E00                    89SR=LT(5)
MESQUITE NEV HUGHES BROS DAIRY 131I=LT(10)            137CS=LT(10) 90SR=LT(2)	AM 51131600327912073741 11 04 69 9380062 K=1.5E00                    89SR=LT(5)
MESQUITE NEV HUGHES BROS DAIRY 131I=LT(10)            137CS=LT(10) 90SR=LT(2)	AM 51131600327912074516 12 01 69 9380062 K=1.6E00                    89SR=LT(5)
MOAPA NEV SEARLES DAIRY 131I=LT(10)            137CS=LT(10) 90SR=2	AM 51135000327912068497 07 09 69 6990071 K=1.5E00                    89SR=6

NOTE--MILK, WATER, RADON UNITS ARE PCI/L, EXCEPT K=GM/L,  
FOOD AND FEED UNITS ARE PCI/KGM, EXCEPT K=GM/KGM,  
SURVEILLANCE AIR RESULTS ARE PCI/M3,  
SOIL RESULTS ARE PCI/GM,  
LT(X) DENOTES A RESULT LESS THAN X.

## APPENDIX

OFF-SITE MILK JULY THROUGH DECEMBER 1969

COLLECTED

MOAPA NEV SEARLES DAIRY 131I=LT(10)            137CS=1.0E01 90SR=4	AM 51135000327912071525 08 05 69 6990071 K=1.8E00                    89SR=LT(5)
MOAPA NEV SEARLES DAIRY 131I=LT(10)            137CS=LT(10) 90SR=3	AM 51135000327912072639 09 23 69 6990071 K=1.7E00                    89SR=LT(5)
MOAPA NEV SEARLES DAIRY 131I=LT(10)            137CS=LT(10) 90SR=2	AM 51135000327912072905 10 07 69 6990071 K=1.6E00                    89SR=LT(5)
MOAPA NEV SEARLES DAIRY 131I=LT(10)            137CS=LT(10) 90SR=LT(2)	AM 51135000327912073903 11 12 69 6990071 K=1.5E00                    89SR=LT(5)
MOAPA NEV SEARLES DAIRY 131I=LT(10)            137CS=LT(10) 90SR=LT(2)	AM 51135000327912074520 12 02 69 6990071 K=1.6E00                    89SR=LT(5)
MONTELLO NEV KAY KIMBER RANCH 131I=LT(10)            137CS=1.0E01 90SR=4	AM 51135500727913068950 07 23 69 6990034 K=1.4E00                    89SR=8
MONTELLO NEV KAY KIMBER RANCH 131I=LT(10)            137CS=3.0E01 90SR=5	AM 51135500727913071618 08 05 69 6990034 K=1.6E00                    89SR=6
NYALA NEV SHARP'S RANCH 131I=LT(10)            137CS=LT(10) 90SR=2	AM 51149002327913068426 07 09 69 0000054 K=2.0E00                    89SR=LT(5)

NOTE--MILK, WATER, RADON UNITS ARE PCI/L, EXCEPT K=GM/L,  
 FOOD AND FEED UNITS ARE PCI/KGM, EXCEPT K=GM/KGM,  
 SURVEILLANCE AIR RESULTS ARE PCI/M3,  
 SOIL RESULTS ARE PCI/GM,  
 LT(X) DENOTES A RESULT LESS THAN X.

## APPENDIX

## OFF-SITE MILK JULY THROUGH DECEMBER 1969

## COLLECTED

NYALA NEV SHARP'S RANCH 131I=LT(10)      137CS=1.0E01 90SR=4            3H=LT4E02	AM 51149002327913071608 08 07 69 8990054 K=1.8E00            89SR=LT(5)
NYALA NEV SHARP'S RANCH 131I=LT(10)      133I=LT(10) 89SR=LT(5)       90SR=5	AM 53149002327913072076 08 29 69 6992054 137CS=2.0E01      K=1.6E00 3H=LT4E02
NYALA NEV SHARP'S RANCH 131I=LT(10)      137CS=1.0E01 CHEM	AM 53149002327913072089 08 30 69 1912054 K=1.7E00            NO
NYALA NEV SHARP'S RANCH 131I=LT(10)      137CS=2.0E01 CHEM	AM 53149002327913072245 08 31 69 1912054 K=1.6E00            NO
NYALA NEV SHARP'S RANCH 131I=LT(10)      137CS=1.0E01 CHEM	AM 53149002327913072249 09 01 69 1912054 K=1.3E00            NO
NYALA NEV SHARP'S RANCH 131I=LT(10)      137CS=2.0E01 90SR=2            3H=SAMPLE	AM 51149002327913072476 09 10 69 8990054 K=1.6E00            89SR=5 LOST
NYALA NEV SHARP'S RANCH 131I=LT(10)      137CS=LT(10) 89SR=LT(5)       90SR=LT(2)	AM 51149002327913073407 10 28 69 6990054 K=1.5E00            3H=LT4E02
NYALA NEV SHARP'S RANCH 131I=LT(10)      137CS=LT(10) 90SR=LT(2)       3H=LT4E02	AM 51149002327913073710 11 04 69 6990054 K=1.6E00            89SR=LT(5)

NOTE--MILK, WATER, RADON UNITS ARE PCI/L, EXCEPT K=GM/L,  
 FOOD AND FEED UNITS ARE PCI/KGM, EXCEPT K=GM/KGM,  
 SURVEILLANCE AIR RESULTS ARE PCI/M3,  
 SOIL RESULTS ARE PCI/GM,  
 LT(X) DENOTES A RESULT LESS THAN X.



## APPENDIX

## OFF-SITE MILK JULY THROUGH DECEMBER 1969

## COLLECTED

NYALA NEV SHARP'S RANCH 131I=LT(10)            137CS=LT(10) 89SR=LT(5)            90SR=3	AM 51149002327913074831 12 17 69 6990054 K=1.6E00            3H=LT4E02
PAHRUMP NEV STANLEY FORD RANCH 131I=LT(10)            137CS=LT(10) CHEM	PM 52160202327913073311 10 29 69 6932150 K=1.5E00            NO
PAHRUMP NEV STANLEY FORD RANCH 131I=LT(10)            137CS=LT(10) CHEM	AM 52160202327913073346 10 30 69 6932150 K=1.5E00            NO
PAHRUMP NEV STANLEY FORD RANCH 131I=LT(10)            137CS=LT(10) CHEM	PM 52160202327913073400 10 30 69 6932150 K=1.7E00            NO
PAHRUMP NEV STANLEY FORD RANCH 131I=LT(10)            137CS=LT(10) CHEM	PM 52160202327913073399 10 31 69 6932150 K=1.7E00            NO
PAHRUMP NEV ANDERSON RANCH 131I=LT(10)            137CS=LT(10) 90SR=LT(2)	AM 51160202327913068429 07 09 69 1930169 K=1.7E00            89SR=LT(5)
PAHRUMP NEV ANDERSON RANCH 131I=LT(10)            137CS=LT(10) 90SR=2	AM 51160202327913071597 08 08 69 1930169 K=1.5E00            89SR=LT(5)
PAHRUMP NEV EDGAR SIRI RANCH 131I=LT(10)            137CS=LT(10) CHEM	AM 52160202327913073348 10 30 69 6932170 K=1.8E00            NO

NOTE--MILK, WATER, RADON UNITS ARE PCI/L, EXCEPT K=GM/L,  
FOOD AND FEED UNITS ARE PCI/KGM, EXCEPT K=GM/KGM,  
SURVEILLANCE AIR RESULTS ARE PCI/M3,  
SOIL RESULTS ARE PCI/GM,  
LT(X) DENOTES A RESULT LESS THAN X.

## APPENDIX

## OFF-SITE MILK JULY THROUGH DECEMBER 1969

## COLLECTED

PAHRUMP NEV EDGAR SIRI RANCH 131I=LT(10)            137CS=LT(10) CHEM	PM 52160202327913073398 10 30 69 6932170 K=1.6E00                    NO
PAHRUMP NEV EDGAR SIRI RANCH 131I=LT(10)            137CS=LT(10) CHEM	AM 52160202327913073402 10 31 69 6932170 K=1.7E00                    NO
PAHRUMP NEV OWENS RANCH 131I=LT(10)            137CS=LT(10) 90SR=LT(2)	AM 51160202327913072323 09 05 69 8490171 K=1.6E00                    89SR=LT(5)
PAHRUMP NEV OWENS RANCH 131I=LT(10)            137CS=LT(10) 90SR=2	PM 51160202327913072904 10 08 69 8490171 K=1.7E00                    89SR=LT(5)
PAHRUMP NEV OWENS RANCH 131I=LT(10)            137CS=LT(10) 90SR=2	AM 51160202327913073918 11 13 69 8490171 K=1.7E00                    89SR=LT(5)
PAHRUMP NEV OWENS RANCH 131I=LT(10)            137CS=LT(10) 90SR=LT(2)	AM 51160202327913074521 12 04 69 8490171 K=1.7E00                    89SR=LT(5)
PAHRUMP NEV EDWIN CLARK RANCH 131I=LT(10)            137CS=LT(10) CHEM	PM 52160202327913073310 10 29 69 6932384 K=1.4E00                    NO
PAHRUMP NEV EDWIN CLARK RANCH 131I=LT(10)            137CS=LT(10) CHEM	AM 52160202327913073347 10 30 69 6932384 K=1.4E00                    NO

NOTE--MILK, WATER, RADON UNITS ARE PCI/L, EXCEPT K=GM/L,  
 FOOD AND FEED UNITS ARE PCI/KGM, EXCEPT K=GM/KGM,  
 SURVEILLANCE AIR RESULTS ARE PCI/M3,  
 SOIL RESULTS ARE PCI/GM,  
 LT(X) DENOTES A RESULT LESS THAN X.

## APPENDIX

## OFF-SITE MILK JULY THROUGH DECEMBER 1969

## COLLECTED

PAHRUMP NEV EDWIN CLARK RANCH 131I=LT(10)            137CS=LT(10) CHEM	PM 52160202327913073401 10 30 69 6932384 K=1.3E00                            NO
PAHRUMP NEV EDWIN CLARK RANCH 131I=LT(10)            137CS=LT(10) CHEM	AM 52160202327913073403 10 31 69 6932384 K=1.5E00                            NO
PANACA NEV KENNETH LEE RANCH 131I=LT(10)            137CS=2.0E01 90SR=3	AM 51160601727913068495 07 10 69 2900069 K=1.5E00                            89SR=11
PANACA NEV KENNETH LEE RANCH 131I=LT(10)            137CS=LT(10) 90SR=2	AM 51160601727913071528 08 06 69 2200069 K=1.4E00                            89SR=5
PANACA NEV KENNETH LEE RANCH 131I=LT(10)            137CS=LT(10) 90SR=LT(2)	AM 51160601727913072636 09 24 69 8990069 K=1.6E00                            89SR=LT(5)
PANACA NEV KENNETH LEE RANCH 131I=LT(10)            137CS=1.0E01 90SR=3	AM 51160601727913072907 10 08 69 8290069 K=1.5E00                            89SR=LT(5)
PANACA NEV KENNETH LEE RANCH 131I=LT(10)            137CS=LT(10) 90SR=2	AM 51160601727913073901 11 13 69 6290069 K=1.4E00                            89SR=LT(5)
PANACA NEV KENNETH LEE RANCH 131I=LT(10)            137CS=LT(10) 90SR=LT(2)	PM 51160601727913074513 12 02 69 6990069 K=1.4E00                            89SR=LT(5)

NOTE--MILK, WATER, RADON UNITS ARE PCI/L, EXCEPT K=GM/L,  
FOOD AND FEED UNITS ARE PCI/KGM, EXCEPT K=GM/KGM,  
SURVEILLANCE AIR RESULTS ARE PCI/M3,  
SOIL RESULTS ARE PCI/GM,  
LT(X) DENOTES A RESULT LESS THAN X.

## APPENDIX

OFF-SITE MILK JULY THROUGH DECEMBER 1969

COLLECTED

RENO NEV ANDERSON DAIRY 131I=LT(10)      137CS=LT(10) 90SR=3	AM 56181503127912074797 12 16 69 K=1.5E00      89SR=LT(5)	351
RENO NEV MODEL DAIRY 131I=LT(10)      137CS=LT(10) 90SR=LT(2)	PM 56181503127912074798 12 15 69 K=1.6E00      89SR=LT(5)	352
SHOSHONE NEV KIRKEBY RANCH 131I=LT(10)      137CS=2.0E01 90SR=3	AM 51192503327913068487 07 07 69 K=1.4E00      89SR=14	8290003
SHOSHONE NEV KIRKEBY RANCH 131I=LT(10)      137CS=1.0E01 90SR=4	AM 51192503327913071782 08 15 69 K=1.2E00      89SR=LT(5)	8290003
SHOSHONE NEV KIRKEBY RANCH 131I=LT(10)      137CS=LT(10) 90SR=4	AM 51192503327913072729 09 23 69 K=1.5E00      89SR=5	4230003
SHOSHONE NEV VAUGHN RHODES RANCH 131I=LT(10)      137CS=1.0E01 CHEM	AM 53192503327913072092 08 30 69 K=1.4E00      NO	2202144
SHOSHONE NEV VAUGHN RHODES RANCH 131I=LT(10)      137CS=1.0E01 CHEM	53192503327913072247 08 31 69 K=1.6E00      NO	2202144
SHOSHONE NEV VAUGHN RHODES RANCH 131I=LT(10)      137CS=1.0E01 CHEM	AM 53192503327913072246 09 01 69 K=1.3E00      NO	2202144

NOTE--MILK, WATER, RADON UNITS ARE PCI/L, EXCEPT K=GM/L,  
 FOOD AND FEED UNITS ARE PCI/KGM, EXCEPT K=GM/KGM,  
 SURVEILLANCE AIR RESULTS ARE PCI/M3,  
 SOIL RESULTS ARE PCI/GM,  
 LT(X) DENOTES A RESULT LESS THAN X.

## APPENDIX

OFF-SITE MILK JULY THROUGH DECEMBER 1969

COLLECTED

SPRINGDALE NEV MCCURDY RANCH (ALT 174) AM	51196402327913068427	07 09 69	6190337
131I=LT(10) 137CS=LT(10)	K=1.6E00	89SR=LT(5)	
90SR=LT(2)			
SPRINGDALE NEV MCCURDY RANCH	AM 51196402327913071566	08 06 69	6190337
131I=LT(10) 137CS=LT(10)	K=1.6E00	89SR=LT(5)	
90SR=2			
SPRINGDALE NEV MCCURDY RANCH	AM 51196402327913072326	09 03 69	6190337
131I=LT(10) 137CS=LT(10)	K=1.4E00	89SR=LT(5)	
90SR=3			
SPRINGDALE NEV MCCURDY RANCH	AM 51196402327913072902	10 09 69	6190337
131I=LT(10) 137CS=LT(10)	K=1.2E00	89SR=LT(5)	
90SR=3			
SPRINGDALE NEV MCCURDY RANCH	PM 51196402327913073917	11 13 69	6190337
131I=LT(10) 137CS=LT(10)	K=1.3E00	89SR=LT(5)	
90SR=2			
SPRINGDALE NEV MCCURDY RANCH	AM 51196402327913074518	12 03 69	6190337
131I=LT(10) 137CS=LT(10)	K=1.2E00	89SR=LT(5)	
90SR=LT(2)			
WELLS NEV WILLOW CREEK RANCH	AM 51231600727913071620	08 04 69	1930121
131I=LT(10) 137CS=3.0E01	K=1.8E00	89SR=24	
90SR=8			
WELLS NEV WILLOW CREEK RANCH	PM 51231600727913073890	11 11 69	1930121
131I=LT(100) 137CS=LT(100)	89SR=LT(5)	90SR=5	
WELLS NEV WILLOW CREEK RANCH	AM 51231600727913074605	12 02 69	1930121
131I=LT(100) 137CS=LT(100)	89SR=LT(5)	90SR=8	

NOTE--MILK, WATER, RADON UNITS ARE PCI/L, EXCEPT K=GM/L,  
 FOOD AND FEED UNITS ARE PCI/KGM, EXCEPT K=GM/KGM,  
 SURVEILLANCE AIR RESULTS ARE PCI/M3,  
 SOIL RESULTS ARE PCI/GM,  
 LT(X) DENOTES A RESULT LESS THAN X.

APPENDIX

OFF-SITE MILK JULY THROUGH DECEMBER 1969

COLLECTED

WINNEMUCCA NEV 3 V DAIRY	PM 56233501327912074809	12 16 69	358
131I=LT(10)      137CS=LT(10)	K=1.6E00	89SR=LT(5)	
90SR=LT(2)			
 YERINGTON NEV VALLEY DAIRY	 AM 56251601927912074796	 12 16 69	 355
131I=LT(10)      137CS=LT(10)	K=1.4E00	89SR=LT(5)	
90SR=3			

NOTE--MILK, WATER, RADON UNITS ARE PCI/L, EXCEPT K=GM/L,  
 FOOD AND FEED UNITS ARE PCI/KGM, EXCEPT K=GM/KGM,  
 SURVEILLANCE AIR RESULTS ARE PCI/M3,  
 SOIL RESULTS ARE PCI/GM,  
 LT(X) DENOTES A RESULT LESS THAN X.

## APPENDIX

## OFF-SITE MILK JULY THROUGH DECEMBER 1969

## COLLECTED

DEVILS LAKE N D LAKE VIEW DAIRY 131I=LT(10)            137CS=LT(10) 90SR=7	AM 56003007133612068982 07 24 69 K=1.1E00            89SR=LT(5)	408
DICKINSON N D CLOVERDALE FOODS CO 131I=LT(10)            137CS=1.0E01 90SR=8	PM 56004008933612068946 07 21 69 K=1.5E00            89SR=18	410
HETTINGER N D ADAMS CO CREAMERY INC 131I=LT(10)            137CS=2.0E01 90SR=7	AM 56007500133612068935 07 23 69 K=1.6E00            89SR=12	405
JAMESTOWN N D COUNTRY BOY DAIRY INC 131I=LT(10)            137CS=2.0E01 90SR=3	PM 56008009333612068770 07 22 69 K=1.6E00            89SR=12	407
RUGBY N D RUGBY CREAMERY CO 131I=LT(100)            137CS=LT(100)	AM 56011006933612068983 07 24 69 89SR=13            90SR=8	409
WILLISTON N D FARMERS UNION COOP CRMRY 131I=LT(10)            137CS=2.0E01 90SR=10	PM 56015010533612068985 07 21 69 K=1.5E00            89SR=20	406

NOTE--MILK, WATER, RADON UNITS ARE PCI/L, EXCEPT K=GM/L,  
 FOOD AND FEED UNITS ARE PCI/KGM, EXCEPT K=GM/KGM,  
 SURVEILLANCE AIR RESULTS ARE PCI/M3,  
 SOIL RESULTS ARE PCI/GM,  
 LT(X) DENOTES A RESULT LESS THAN X.

## APPENDIX

## OFF-SITE MILK JULY THROUGH DECEMBER 1969

## COLLECTED

ATOKA OKLAHOMA MUNGLE DAIRY 131I=LT(10) 137CS=LT(10) 90SR=2	PM 56006000535712071814 08 17 69 K=1.3E00 89SR=LT(5)	471
ELK CITY OKLA KELLY DAIRY 131I=LT(10) 137CS=1.0E01 90SR=3	AM 56027000935712071772 08 16 69 K=1.7E00 89SR=LT(5)	475
GOODWELL OKLA PANHANDLE STATE COLLEGE 131I=LT(10) 137CS=LT(10) 90SR=5	PM 56029513935712071771 08 15 69 K=1.4E00 89SR=LT(5)	466
GRANITE OKLA OKLA STATE REFORMATORY 131I=LT(10) 137CS=LT(10) CHEM	PM 56029605535712071774 08 13 69 K=1.6E00 NO	468
GRANITE OKLA OKLA STATE REFORMATORY 131I=LT(10) 137CS=LT(10) CHEM	PM 56029605535712071775 08 15 69 K=1.6E00 NO	468
GRANITE OKLA OKLA STATE REFORMATORY 131I=LT(10) 137CS=LT(10) 90SR=2	PM 56029605535712071801 08 16 69 K=1.4E00 89SR=LT(5)	468
GRANITE OKLA OKLA STATE REFORMATORY 131I=LT(10) 137CS=LT(10) CHEM	PM 56029605535712071813 08 17 69 K=1.5E00 NO	468
MCALESTER OKLAHOMA OKLA STATE PRISON 131I=LT(10) 137CS=LT(10) 90SR=6	AM 56046012135712072025 08 26 69 K=1.8E00 89SR=LT(5)	469

NOTE--MILK, WATER, RADON UNITS ARE PCI/L, EXCEPT K=GM/L,  
FOOD AND FEED UNITS ARE PCI/KGM, EXCEPT K=GM/KGM,  
SURVEILLANCE AIR RESULTS ARE PCI/M3,  
SOIL RESULTS ARE PCI/GM,  
LT(X) DENOTES A RESULT LESS THAN X.



APPENDIX

OFF-SITE MILK JULY THROUGH DECEMBER 1969

COLLECTED

OKLAHOMA CITY OKLA COLDIRON DAIRY	AM 56055010935712071812 08 19 69	474
131I=LT(10)                      137CS=LT(10)	K=1.4E00                      89SR=LT(5)	
90SR=3		
PONCA CITY OKLA MIDWEST CREAMERY	PM 56061007135712071773 08 15 69	470
131I=LT(10)                      137CS=LT(10)	K=1.7E00                      89SR=LT(5)	
90SR=5		
STILLWATER OKLA OSU DAIRY	AM 56073011935712071776 08 14 69	473
131I=LT(10)                      137CS=LT(10)	K=1.5E00                      89SR=7	
90SR=6		

NOTE--MILK, WATER, RADON UNITS ARE PCI/L, EXCEPT K=GM/L,  
 FOOD AND FEED UNITS ARE PCI/KGM, EXCEPT K=GM/KGM,  
 SURVEILLANCE AIR RESULTS ARE PCI/M3,  
 SOIL RESULTS ARE PCI/GM,  
 LT(X) DENOTES A RESULT LESS THAN X.

## APPENDIX

OFF-SITE MILK	JULY THROUGH	DECEMBER 1969	COLLECTED
ABERDEEN S D DEAVRIES DAIRY	AM	56001001340612071724	08 12 69 422
131I=LT(10)		K=1.3E00	89SR=9
137CS=LT(10)			
90SR=3			
MITCHELL S D CULHANES DAIRY	PM	56013003540612071720	08 11 69 424
131I=LT(10)		K=1.4E00	89SR=8
137CS=LT(10)			
90SR=4			
SIoux FALLS S D SIoux VALLEY MILK PRO	AM	56018009940612071770	08 12 69 421
131I=LT(10)		K=1.5E00	NO
137CS=LT(10)			
CHEM			
SIoux FALLS S D SIoux VALLEY MILK PRO	PM	56018009940612071768	08 14 69 421
131I=LT(10)		K=1.5E00	NO
137CS=LT(10)			
CHEM			
SIoux FALLS S D SIoux VALLEY MILK PRO	PM	56018009940612071769	08 14 69 421
131I=LT(10)		K=1.6E00	89SR=5
137CS=LT(10)			
90SR=11			
SIoux FALLS S D SIoux VALLEY MILK PRO	AM	56018009940612071842	08 16 69 421
131I=LT(10)		K=1.5E00	89SR=8
137CS=LT(10)			
90SR=11			
SIoux FALLS S D SIoux VALLEY MILK PRO	AM	56018009940612071839	08 17 69 421
131I=LT(10)		K=1.5E00	89SR=14
137CS=1.0E01			
90SR=5			
SIoux FALLS S D SIoux VALLEY MILK PRO	AM	56018009940612071840	08 18 69 421
131I=LT(10)		K=1.6E00	89SR=6
137CS=LT(10)			
90SR=7			

NOTE--MILK, WATER, RADON UNITS ARE PCI/L, EXCEPT K=GM/L,  
 FOOD AND FEED UNITS ARE PCI/KGM, EXCEPT K=GM/KGM,  
 SURVEILLANCE AIR RESULTS ARE PCI/M3,  
 SOIL RESULTS ARE PCI/GM,  
 LT(X) DENOTES A RESULT LESS THAN X.

APPENDIX

OFF-SITE MILK JULY THROUGH DECEMBER 1969

COLLECTED

SIoux FALLS S D SIoux VALLEY MILK PRO AM 56018009940612071860 08 19 69 421  
131I=LT(10) 137CS=LT(10) K=1.5E00 NO  
CHEM

VOLGA S D VOLGA COOP CREAMERY AM 56022501140612071701 08 11 69 423  
131I=LT(10) 137CS=1.0E01 K=1.4E00 89SR=10  
90SR=8

NOTE--MILK, WATER, RADON UNITS ARE PCI/L, EXCEPT K=GM/L,  
FOOD AND FEED UNITS ARE PCI/KGM, EXCEPT K=GM/KGM,  
SURVEILLANCE AIR RESULTS ARE PCI/M3,  
SOIL RESULTS ARE PCI/GM,  
LT(X) DENOTES A RESULT LESS THAN X.

## APPENDIX

OFF-SITE MILK JULY THROUGH DECEMBER 1969

COLLECTED

GARRISON UTAH GONDERS RANCH 131I=LT(10)      137CS=2.0E01 90SR=3	PM 51070602743813068489 07 06 69 8990006 K=1.8E00      89SR=15
GARRISON UTAH GONDERS RANCH 131I=LT(10)      137CS=LT(10) 90SR=2	AM 51070602743813072731 09 23 69 1910006 K=1.7E00      89SR=LT(5)
GARRISON UTAH GONDERS RANCH 131I=LT(10)      137CS=LT(10) 90SR=4	AM 51070602743813073160 10 16 69 1910006 K=1.6E00      89SR=LT(5)
GARRISON UTAH GONDERS RANCH 131I=LT(10)      137CS=LT(10) 90SR=2	AM 51070602743813074377 11 19 69 1910006 K=1.5E00      89SR=LT(5)
NEWCASTLE UTAH NEWCASTLE DAIRY 131I=LT(10)      137CS=LT(10) 90SR=6	AM 51141802143812068157 07 02 69 1730001 K=1.4E00      89SR=LT(5)
NEWCASTLE UTAH NEWCASTLE DAIRY 131I=LT(10)      137CS=2.0E01 90SR=6	AM 51141802143812071440 08 01 69 1730001 K=1.8E00      89SR=LT(5)
NEWCASTLE UTAH NEWCASTLE DAIRY 131I=LT(10)      137CS=LT(10) 90SR=LT(2)	PM 51141802143812072682 09 24 69 1730001 K=1.5E00      89SR=LT(5)
NEWCASTLE UTAH NEWCASTLE DAIRY 131I=LT(10)      137CS=LT(10) 90SR=2	AM 51141802143812073006 10 08 69 1730001 K=1.5E00      89SR=LT(5)

NOTE--MILK, WATER, RADON UNITS ARE PCI/L, EXCEPT K=GM/L,  
 FOOD AND FEED UNITS ARE PCI/KGM, EXCEPT K=GM/KGM,  
 SURVEILLANCE AIR RESULTS ARE PCI/M3,  
 SOIL RESULTS ARE PCI/GM,  
 LT(X) DENOTES A RESULT LESS THAN X.

## APPENDIX

OFF-SITE MILK JULY THROUGH DECEMBER 1969

COLLECTED

NEWCASTLE UTAH NEWCASTLE DAIRY 131I=LT(10)            137CS=LT(10) 90SR=4	AM 51141802143812073743 11 05 69 1730001 K=1.3E00                    89SR=LT(5)
NEWCASTLE UTAH NEWCASTLE DAIRY 131I=LT(10)            137CS=LT(10) 90SR=LT(2)	PM 51141802143812074517 12 03 69 1730001 K=1.4E00                    89SR=LT(5)
ST GEORGE UTAH R COX DAIRY 131I=LT(10)            137CS=LT(10) 90SR=LT(2)	AM 51190005343812068223 07 04 69 6490001 K=1.7E00                    89SR=LT(5)
ST GEORGE UTAH R COX DAIRY 131I=LT(10)            137CS=LT(10) 90SR=4	AM 51190005343812068510 07 11 69 6490001 K=1.4E00                    89SR=LT(5)
ST GEORGE UTAH R COX DAIRY 131I=LT(10)            137CS=LT(10) 90SR=3	AM 51190005343812068973 07 25 69 6490001 K=1.4E00                    89SR=LT(5)
ST GEORGE UTAH R COX DAIRY 131I=LT(10)            137CS=LT(10) 90SR=5	AM 51190005343812071415 08 01 69 6490001 K=1.5E00                    89SR=LT(5)
ST GEORGE UTAH R COX DAIRY 131I=LT(10)            137CS=LT(10) 90SR=3	AM 51190005343812071688 08 08 69 6490001 K=1.6E00                    89SR=LT(5)
ST GEORGE UTAH R COX DAIRY 131I=LT(10)            137CS=LT(10) 90SR=4	AM 51190005343812071767 08 15 69 6490001 K=1.6E00                    89SR=LT(5)

NOTE---MILK, WATER, RADON UNITS ARE PCI/L, EXCEPT K=GM/L,  
 FOOD AND FEED UNITS ARE PCI/KGM, EXCEPT K=GM/KGM,  
 SURVEILLANCE AIR RESULTS ARE PCI/M3,  
 SOIL RESULTS ARE PCI/GM,  
 LT(X) DENOTES A RESULT LESS THAN X.

## APPENDIX

OFF-SITE MILK JULY THROUGH DECEMBER, 1969.

COLLECTED

ST GEORGE UTAH R. COX, DAIRY 131I=LT(10)      137CS=LT(10), 90SR=2	AM 51190005343812071892 08 22 69 6490001 K=1.3E00      89SR=LT(5)
ST GEORGE UTAH R. COX, DAIRY 131I=LT(10)      137CS=LT(10), 90SR=4	AM 51190005343812072113 08 29 69 6490001 K=1.4E00      89SR=LT(5)
ST GEORGE UTAH R. COX, DAIRY 131I=LT(10)      137CS=LT(10), 90SR=2	PM 51190005343812072684 09 25 69 6490001 K=1.6E00      89SR=LT(5)
ST GEORGE UTAH R. COX, DAIRY 131I=LT(10)      137CS=LT(10), 90SR=2	PM 51190005343812073007 10 09 69 6490001 K=1.5E00      89SR=LT(5)
ST GEORGE UTAH R. COX, DAIRY 131I=LT(10)      137CS=LT(10), 90SR=3	AM 51190005343812073742 11 05 69 6490001 K=1.6E00      89SR=LT(5)
ST GEORGE UTAH R. COX, DAIRY 131I=LT(10)      137CS=LT(10), 90SR=LT(2)	AM 51190005343812074514 12 02 69 6490001 K=1.6E00      89SR=LT(5)

NOTE--MILK, WATER, RADON UNITS ARE PCI/L, EXCEPT K=GM/L,  
FOOD AND FEED UNITS ARE PCI/KGM, EXCEPT K=GM/KGM,  
SURVEILLANCE AIR RESULTS ARE PCI/M3,  
SOIL RESULTS ARE PCI/GM,  
LT(X) DENOTES A RESULT LESS THAN X.

## DISTRIBUTION

- 1 - 15 Southwestern Radiological Health Lab., Las Vegas, Nevada
- 16 Robert E. Miller, Manager, AEC/NVOO, Las Vegas, Nevada
- 17 Robert H. Thalgott, AEC/NVOO, Las Vegas, Nevada
- 18 Henry G. Vermillion, AEC/NVOO, Las Vegas, Nevada
- 19 Robert R. Loux, AEC/NVOO, Las Vegas, Nevada
- 20 D. W. Hendricks, AEC/NVOO, Las Vegas, Nevada
- 21 Technical Library, AEC/NVOO, Las Vegas, Nevada
- 22 Mail & Records, AEC/NVOO, Las Vegas, Nevada
- 23 Chief, NOB/DASA, AEC/NVOO, Las Vegas, Nevada
- 24 Philip W. Allen, ARL/ESSA, AEC/NVOO, Las Vegas, Nevada
- 25 Martin B. Biles, DOS, USAEC, Washington, D. C.
- 26 Ralph S. Decker, SNSO, USAEC, Washington, D. C.
- 27 John P. Jewett, SNSO-N, Jackass Flats, Nevada
- 28 Assistant General Manager, DMA, USAEC, Washington, D. C.
- 29 John S. Kelly, DPNE, USAEC, Washington, D. C.
- 30 Byron F. Murphey, Sandia Labs., Albuquerque, New Mexico
- 31 M. L. Merritt, Sandia Labs., Albuquerque, New Mexico
- 32 Commander, Test Command, DASA, Sandia Base, New Mexico
- 33 Bernard W. Shore, LRL, Livermore, California
- 34 J. E. Carothers, LRL, Livermore, California
- 35 Roger E. Batzel, LRL, Livermore, California
- 36 Ed. Fleming, LRL, Livermore, California
- 37 Howard A. Tewes, LRL, Livermore, California
- 38 L. S. Germain, LRL, Livermore, California
- 39 William C. King, LRL, Mercury, Nevada
- 40 L. Crooks, LRL, Mercury, Nevada
- 41 William E. Ogle, LASL, Los Alamos, New Mexico
- 42 H. J. Otway, LASL, Los Alamos, New Mexico
- 43 Harry S. Jordan, LASL, Los Alamos, New Mexico
- 44 Charles I. Browne, LASL, Los Alamos, New Mexico

- 45 Joseph A. Lieberman, Act.Comm.-Radiation Office, EPA, Rockville, Md.
- 46 Paul Tompkins, Radiation Office, EPA, Rockville, Maryland
- 47 Bernd Kahn, Rad.Engineering Lab., EPA, Cincinnati, Ohio
- 48 - 49 Charles L. Weaver, Radiation Office, EPA, Rockville, Maryland
- 50 Gilbert Ferber, ARL/ESSA, Silver Springs, Maryland
- 51 John A. Harris, PI, USAEC, Washington, D. C.
- 52 R. S. Davidson, Battelle Memorial Institute, Columbus, Ohio
- 53 R. Glen Fuller, Battelle Memorial Institute, Las Vegas, Nevada
- 54 Arden Bicker, REECo., Mercury, Nevada
- 55 - 56 DTIE, Oak Ridge, Tennessee
- 57 Frank E. Abbott, USAEC, Rocky Flats Area Office, Golden, Colorado