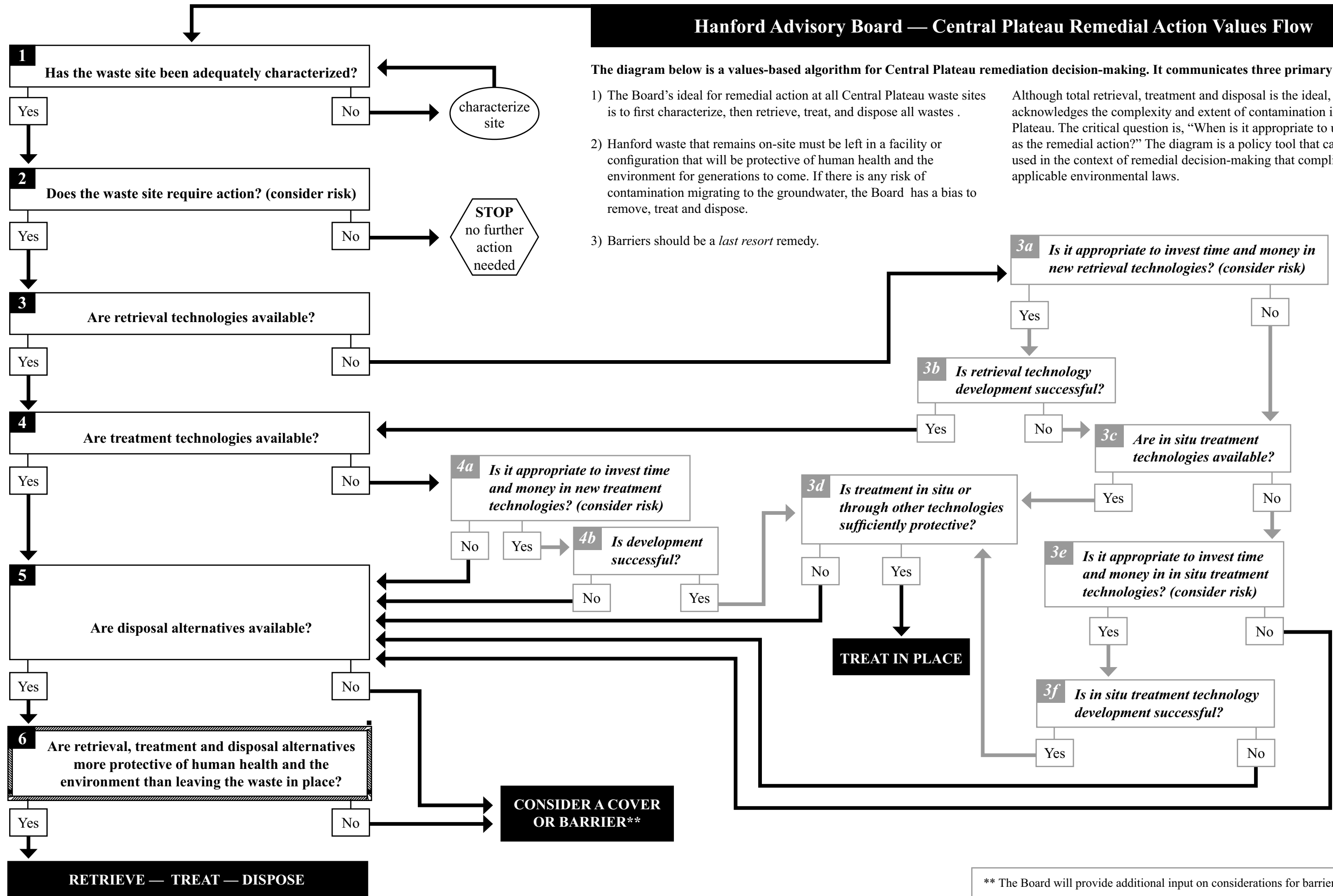


# Hanford Advisory Board — Central Plateau Remedial Action Values Flow



The diagram below is a values-based algorithm for Central Plateau remediation decision-making. It communicates three primary Board biases:

- 1) The Board’s ideal for remedial action at all Central Plateau waste sites is to first characterize, then retrieve, treat, and dispose all wastes .
- 2) Hanford waste that remains on-site must be left in a facility or configuration that will be protective of human health and the environment for generations to come. If there is any risk of contamination migrating to the groundwater, the Board has a bias to remove, treat and dispose.
- 3) Barriers should be a *last resort* remedy.

Although total retrieval, treatment and disposal is the ideal, the Board acknowledges the complexity and extent of contamination in the Central Plateau. The critical question is, “When is it appropriate to utilize a barrier as the remedial action?” The diagram is a policy tool that can only be used in the context of remedial decision-making that complies with all applicable environmental laws.

\*\* The Board will provide additional input on considerations for barrier application.