

Spatial Output Reports

The information in this chapter describes how to generate spatial output and reference reports. These reports display Fire Planning Unit (FPU) and Fire Workload Area (FWA) boundaries in an aerial photo backdrop.

Data Requirements for Spatial Output Reports

The FPA Project must complete Stage 1 in the Large Fire Module before FPUs can run these reports.

In This Chapter

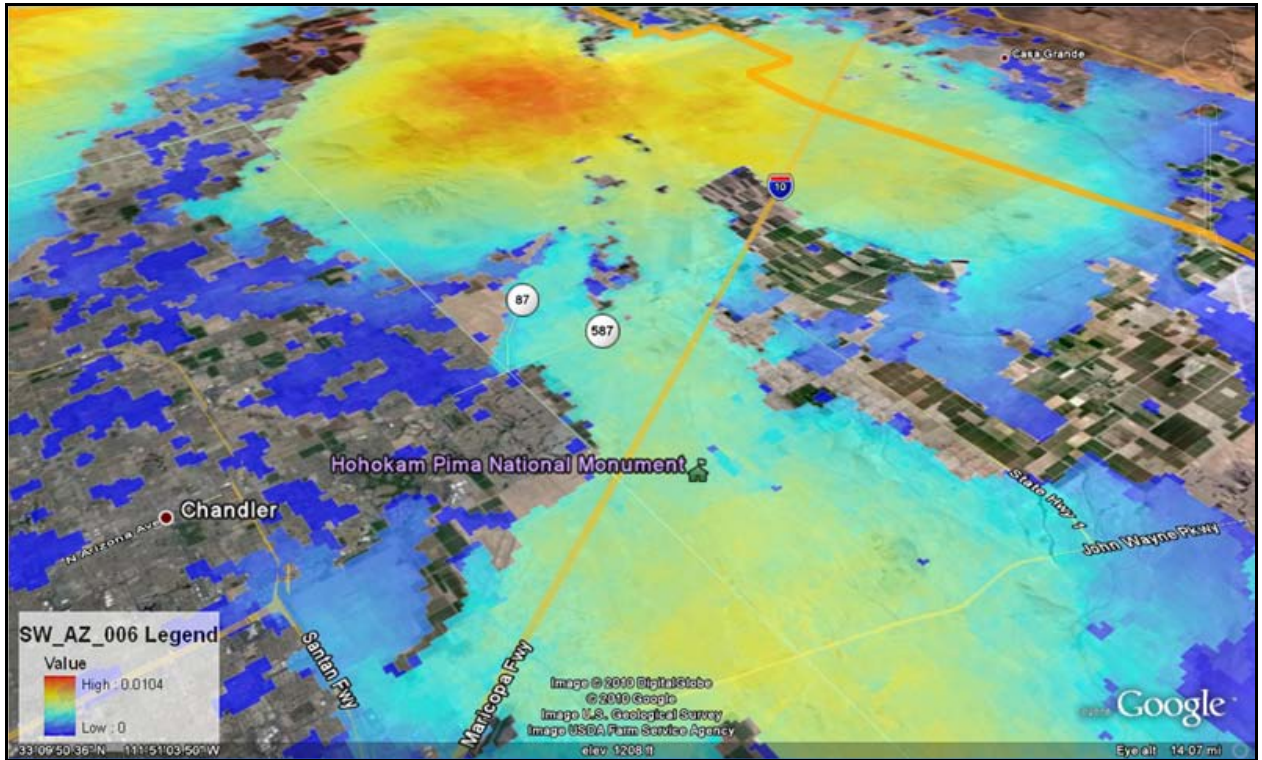
This chapter discusses [generating spatial output and reference reports](#).

FPA User Guide

Spatial Output Reports

Use this screen to review a map of an FPU's spatial output and/or reference reports. The information in these maps is informational and exists in local data, FPA data (time travel point, dispatch location, boundaries), and data layers provided by other enterprise data sources such as LANDFIRE.

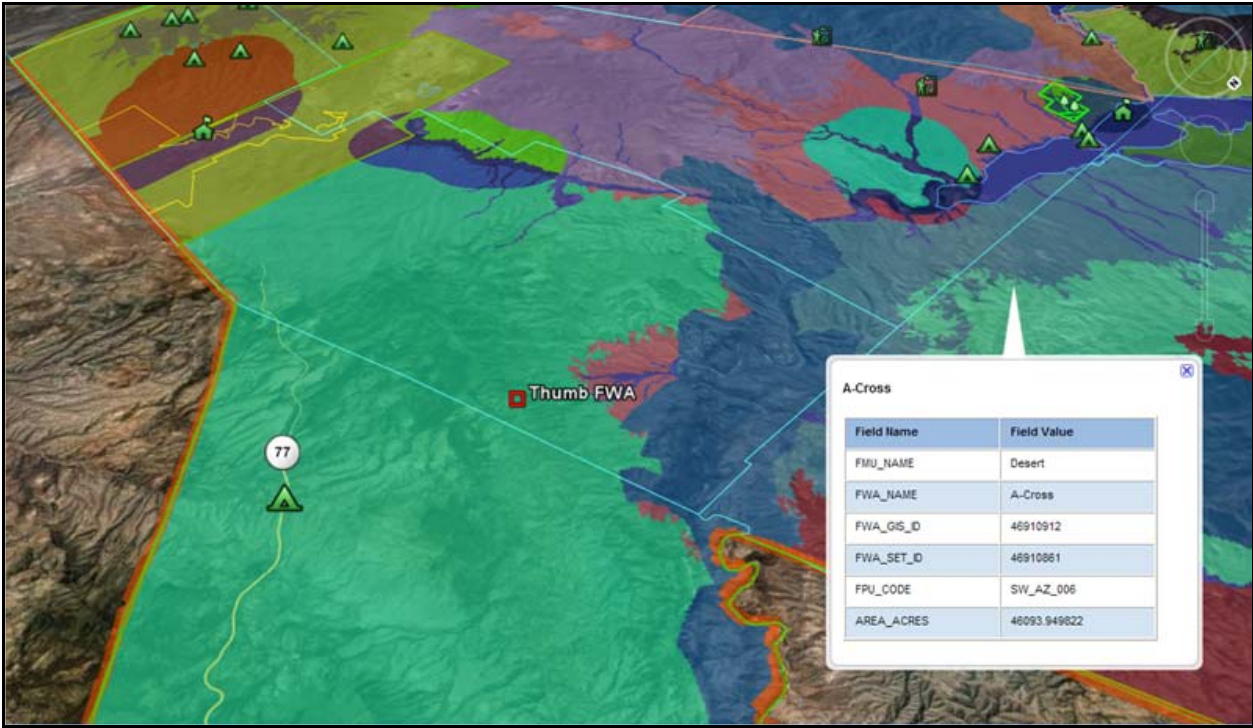
Spatial Output Reports: This map represents an FPU's burn probabilities. The map is available in .kmz or .kml format and is opened using a public globe-viewer. An example of a spatial output report is:



Spatial Reference Reports: This map represents an FPU's boundaries, its FWA boundaries, and agency boundaries. The map is available in .kmz or .kml format and opened using a public globe-viewer. An example of a spatial output report for an FPU's boundaries is:



An example of a spatial output report for an FWA’s boundaries is:



FPA User Guide

Spatial Output Reports

An example of a spatial output report for an Agency's boundaries is:



Generating Spatial Output and Reference Reports

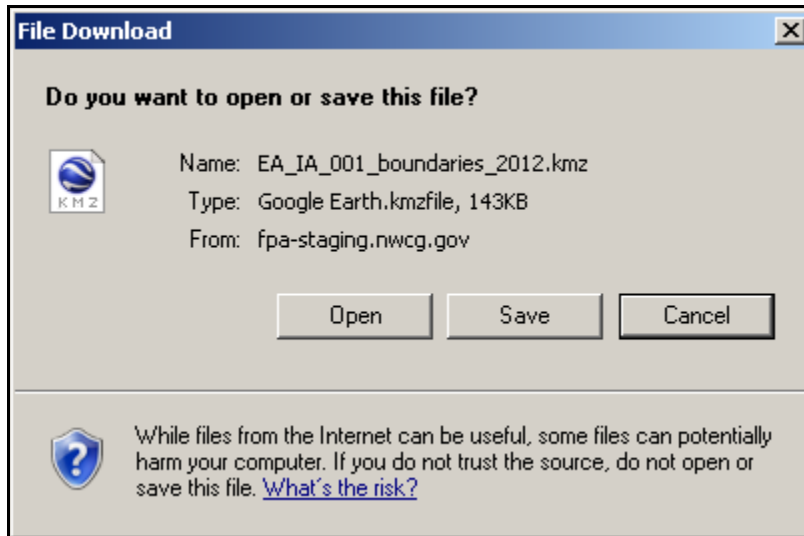
1. Select **Reports > Spatial Output Reports**.

Displays the Spatial Output and Reference Reports box.

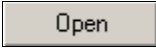

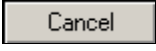
FPU Spatial Output Reports		
Report	Map	Precondition for Output Availability
Large Fire Burn Probability	<input type="button" value="RUN"/>	Large Fire simulation is complete
FPU Spatial Reference Reports		
Report	Map	Precondition for Output Availability
FPU Reference Layers	<input type="button" value="RUN"/>	Reference layers include: FPU boundary, Agency boundaries clipped to the FPU boundary, and FWA boundaries. The FWA boundaries are obtained from the FWA Set that is associated to the selected Team Analysis.

2. Click under the Map column to begin downloading a map.

Displays the File Download Box



If there is no public globe-viewer already available on your machine, the system prompts you to download the software.

3. Click  to open the displayed file name. Review and/or manipulate map details. After you close out of the public globe-viewer, the system returns to the Spatial Output Reports.
- Click  to save the displayed file name to another location.
- Click  to cancel the download and return to the Spatial Output Reports screen.