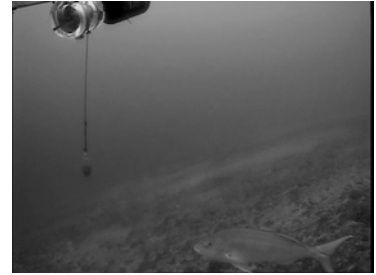


SE-11-02 March 2, 2011 progress report

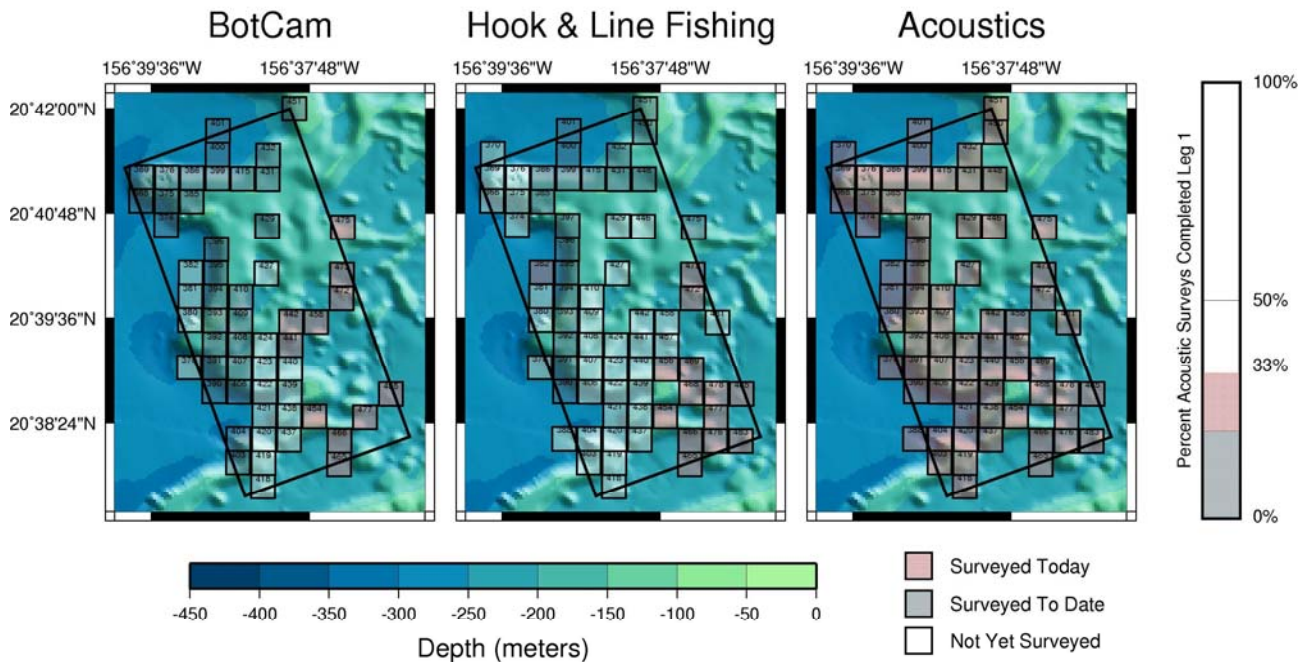
The *Oscar Elton Sette* conducted nighttime acoustic surveys last night (3/1) and all day today (3/2), following a brief morning diversion to the south for galley waste disposal timed to coincide with a break in the acoustic survey for minor ADCP issues. Replicate passes were completed approximately every 9 hours. The 6 hours of BotCam video from the previous day (3/1) were cursorily examined by the BotCam team; some Deep-7 species were seen (opakapaka, *Pristipomoides filamentosus*, seen at right), as well as moderate numbers of non-target species (principally kahala, *Seriola rivoliana*, seen at left).



The UH contract vessel *Hukipono* arrived on station this morning and completed 11 BotCam deployments today. *Hukipono* BotCam operations so far have recorded the presence of occasional large schools of kalekale (*Pristipomoides sieboldii*) and kahala, with scattered opakapaka, gindai (*Pristipomoides zonatus*), ehu (*Etelis carbunculus*), onaga (*Etelis coruscans*), and Randall's snapper (*Randallichthys filamentosus*). The *Hukipono* took on bait provisions from the *Sette* in the afternoon using a stern-deployed floating surface array, allowing transfer without disrupting the acoustic survey. Fishing operations also resumed, with 14 daytime stations completed by the F/Vs *Okalani* and *Naomi K*. Nighttime

stations are scheduled for tonight by the same 2 vessels. Fishing activity is scheduled to resume tomorrow with the possibility of a 3rd fishing boat (F/V *Imua*) from Oahu joining the survey. So far, fishing operations have caught opakapaka, kalekale, ehu, and a number of sharks and kahala. There is some concern that catchability of kalekale may be reduced due to the size of the hook and the fast drift (i.e., the species is likely abundant but is not being retained on the gear).

**Progress Report for SE-11-02
Mar 2, 2011**



Today the Huki Pono has surveyed 11 botcam grid locations and the fishing fleet surveyed a total of 14 grid locations.
 The *Sette* surveyed all grid locations 2 times, totaling 200 km of acoustics track today.
 Grids surveyed today: 4.9%
 Grids surveyed to date: 15.2%
 Grids remaining: 84.8%