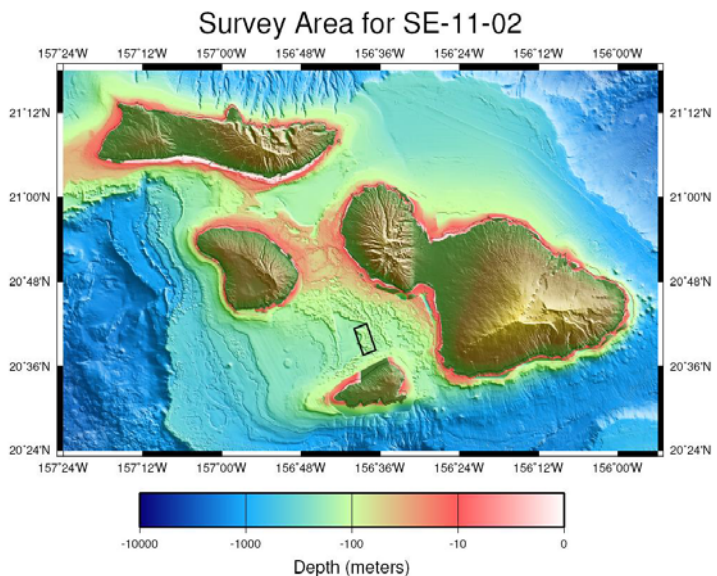


SE-11-02 summary

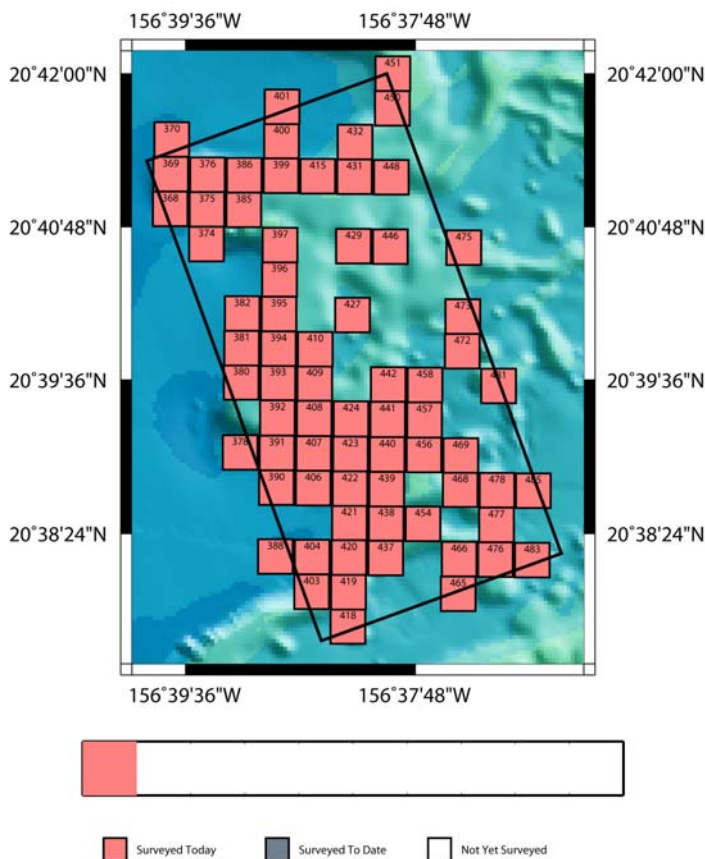
Scientists from the Pacific Islands Fisheries Science Center (PIFSC), in collaboration with fishermen, University of Hawaii, State of Hawaii DAR, and University of Miami, are attempting to calibrate different bottomfish survey methodologies. This will involve an array of 3 techniques on the February/March cruise (SE-11-02) of the NOAA research vessel *Oscar Elton Sette*, with the possible addition of a 4th type of gear on a related May cruise. On SE-11-02, the *Sette* will be staffed by acousticians conducting an active acoustics survey using a Simrad EK60 split-beam sounder. The University of Hawaii Department of Oceanography will be deploying a baited bottom video camera (called BotCam) from the contract vessel *Hukipono*. A single BotCam unit will be deployed from the *Sette* on selected days to ground-truth target strength measurements and species identification. Bottomfish fishermen (aboard the chartered fishing vessels *Okalani*, *Naomi K*, and *Hokuloa*) will be conducting a fishing survey of the grid located off Maui (above). A later cruise in May will examine the use of an autonomous underwater vehicle (AUV) for deepwater bottomfish surveying, possibly in this area.



February 28, 2011 progress report

The *Sette* departed Honolulu on schedule Friday 2/25/2011. Acoustic calibration was completed in Kealahou Bay, Big Island. During calibration activities, a series of hourly CTD measurements were taken while at anchor, over a 12-hour period, to better understand the coastal oceanography of the region. The *Sette* departed Big Island 2/27/2011 at first light and steamed towards Box D of the survey grid options since this was a high priority choice of project location. A nighttime acoustic survey was initiated the evening of 2/27/2011. A complete circuit of the survey box was completed in approximately 9 hours, with 3 complete circuits completed today. Additional replicate passes are being completed, with a *Sette* BotCam deployment scheduled for 3/1/2011. The UH contract vessel *Hukipono* arrived on station this morning and completed 15 BotCam deployments today. Fishing operations also commenced today, with 14 daytime stations completed by 2 fishing vessels (*Okalani* and *Naomi K*) and 7 nighttime stations anticipated for tonight (*Okalani* had mechanical problems and had to return to port). This progress information is shown graphically to the right for acoustics and below for fishing and BotCam.

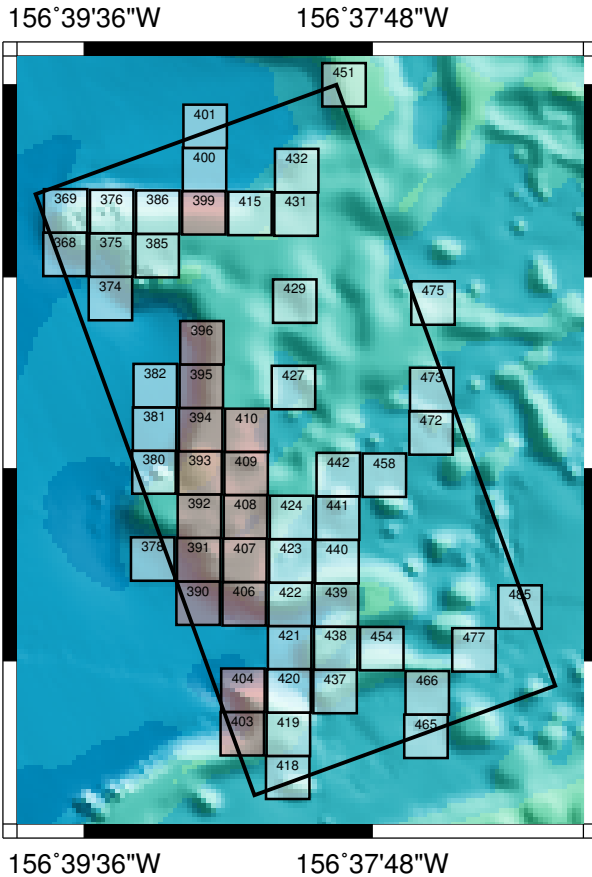
Acoustics Track



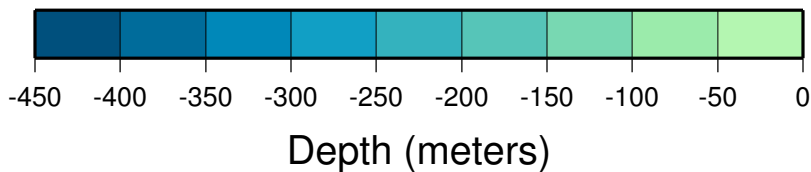
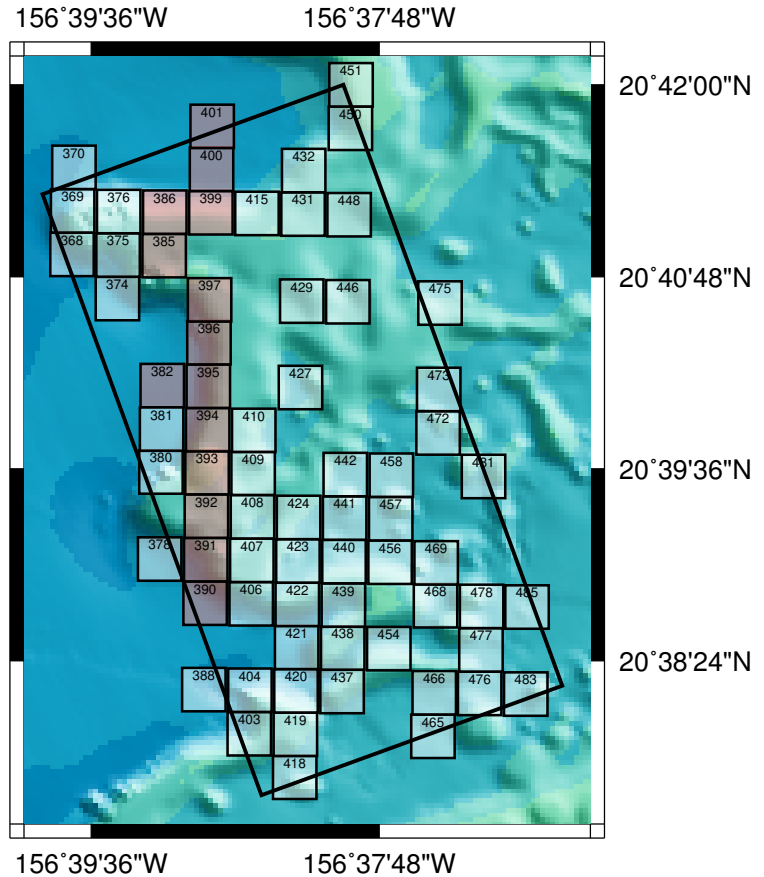
Progress Report for SE-11-02

Feb 28, 2011

BotCam



Fishing



- Surveyed Today
- Surveyed To Date
- Not Yet Surveyed

Today the Huki Pono has surveyed 15 botcam grid locations and the fishing fleet surveyed a total of 14 grid locations. The Sette surveyed all grid locations three times, totaling 463.0 km of acoustics track today.

Grids surveyed today: 11.0%
Grids surveyed to date: 16.5%
Grids remaining: 83.5%