

Table 6.1  
Cancer of the Colon and Rectum (Invasive)

Trends in SEER Incidence<sup>ab</sup> and U.S. Mortality<sup>c</sup> Using the Joinpoint Regression Program,  
1975-2007 With up to Four Joinpoints, 1992-2007 With up to Two Joinpoints,  
Both Sexes by Race/Ethnicity

	Joinpoint Trend 1		Joinpoint Trend 2		Joinpoint Trend 3		Joinpoint Trend 4		Joinpoint Trend 5		AAPC <sup>d</sup>	
	Years	APC	Years	APC	Years	APC	Years	APC	Years	APC	1998-2007	2003-2007
<u>SEER 9 Delay-Adjusted Incidence<sup>a</sup>, 1975-2007</u>												
All Races	1975-1985	0.8*	1985-1995	-1.8*	1995-1998	1.6	1998-2007	-2.6*			-2.6*	-2.6*
White	1975-1985	0.8*	1985-1995	-2.0*	1995-1998	1.8	1998-2007	-2.7*			-2.7*	-2.7*
Black	1975-1980	3.2*	1980-2002	-0.1	2002-2007	-2.6*					-1.5*	-2.6*
<u>SEER 13 Delay-Adjusted Incidence<sup>b</sup>, 1992-2007</u>												
All Races	1992-1995	-2.2*	1995-1998	1.8	1998-2007	-2.5*					-2.5*	-2.5*
White	1992-1995	-2.2*	1995-1998	1.9*	1998-2007	-2.7*					-2.7*	-2.7*
Black	1992-2003	-0.1	2003-2007	-3.0*							-1.4*	-3.0*
<u>SEER 9 Observed Incidence<sup>a</sup>, 1975-2007</u>												
All Races	1975-1985	0.8*	1985-1995	-1.8*	1995-1998	1.2	1998-2002	-2.0*	2002-2007	-3.2*	-2.7*	-3.2*
White	1975-1985	0.8*	1985-1995	-2.0*	1995-1998	1.8	1998-2007	-2.8*			-2.8*	-2.8*
Black	1975-1980	3.2*	1980-2002	-0.2	2002-2007	-2.9*					-1.7*	-2.9*
<u>SEER 13 Observed Incidence<sup>b</sup>, 1992-2007</u>												
All Races	1992-1995	-2.2*	1995-1998	1.9	1998-2007	-2.6*					-2.6*	-2.6*
White	1992-1995	-2.2*	1995-1998	2.0*	1998-2007	-2.8*					-2.8*	-2.8*
White NH <sup>ef</sup>	1992-1995	-2.2*	1995-1998	2.0	1998-2007	-2.8*					-2.8*	-2.8*
Black	1992-2003	-0.2	2003-2007	-3.4*							-1.6*	-3.4*
Black NH <sup>ef</sup>	1992-2003	-0.2	2003-2007	-3.2*							-1.5*	-3.2*
API <sup>e</sup>	1992-2002	-0.4	2002-2007	-3.2*							-2.0*	-3.2*
AI/AN <sup>eg</sup>	1992-2007	-0.3									-0.3	-0.3
Hispanic <sup>f</sup>	1992-1999	0.9	1999-2007	-1.7*							-1.4*	-1.7*
<u>U.S. Cancer Mortality<sup>c</sup>, 1975-2007</u>												
All Races	1975-1978	0.2	1978-1985	-0.8*	1985-2002	-1.8*	2002-2005	-4.3*	2005-2007	-1.7	-2.6*	-3.0*
White	1975-1978	0.1	1978-1985	-1.0*	1985-2002	-1.9*	2002-2005	-4.3*	2005-2007	-1.6	-2.7*	-3.0*
Black	1975-1990	0.7*	1990-2001	-0.8*	2001-2007	-2.8*					-2.1*	-2.8*
<u>U.S. Cancer Mortality<sup>c</sup>, 1992-2007</u>												
All Races	1992-2002	-1.8*	2002-2005	-4.2*	2005-2007	-1.7					-2.6*	-3.0*
White	1992-2002	-1.9*	2002-2005	-4.3*	2005-2007	-1.6					-2.7*	-3.0*
White NH <sup>ef</sup>	1992-2002	-1.8*	2002-2005	-4.0*	2005-2007	-1.5					-2.5*	-2.8*
Black	1992-2000	-0.6*	2000-2007	-2.6*							-2.2*	-2.6*
Black NH <sup>ef</sup>	1992-2001	-0.6*	2001-2007	-2.6*							-2.0*	-2.6*
API <sup>e</sup>	1992-2007	-2.2*									-2.2*	-2.2*
AI/AN <sup>eg</sup>	1992-1996	10.4*	1996-2007	-2.2*							-2.2*	-2.2*
Hispanic <sup>f</sup>	1992-1999	0.4	1999-2007	-2.2*							-1.9*	-2.2*

Joinpoint Regression Program Version 3.4.3, April 2010, National Cancer Institute. (<http://srab.cancer.gov/joinpoint/>).

The APC is the Annual Percent Change based on rates age-adjusted to the 2000 US Std Population (19 age groups - Census P25-1130).

<sup>a</sup> Trends are from the SEER 9 areas (San Francisco, Connecticut, Detroit, Hawaii, Iowa, New Mexico, Seattle, Utah, and Atlanta).

<sup>b</sup> Trends are from the SEER 13 areas (SEER 9 Areas, Los Angeles, San Jose-Monterey, Rural Georgia, and the Alaska Native Registry).

<sup>c</sup> Trends are from US Mortality Files, National Center for Health Statistics, Centers for Disease Control and Prevention.

<sup>d</sup> The AAPC is the Average Annual Percent Change and is based on the APCs calculated by Joinpoint.

<sup>e</sup> API - Asian/Pacific Islander, AI/AN - American Indian/Alaska Native, NH - Non-Hispanic

<sup>f</sup> Hispanic and Non-Hispanic are not mutually exclusive from whites, blacks, Asian/Pacific Islanders, and American Indians/Alaska

Natives. Incidence data for Hispanics and Non-Hispanics are based on NHIA and exclude cases from the Alaska Native Registry.

The Hispanic and Non-Hispanic mortality trends exclude deaths from CT, DC, ME, MD, MN, NH, NY, ND, OK and VT.

<sup>g</sup> Data for American Indian/Alaska Native are based on the CHSDA (Contract Health Service Delivery Area) counties.

\* The APC/AAPC is significantly different from zero ( $p < .05$ ).

- Joinpoint regression line analysis could not be performed on data series.

Table 6.2  
Cancer of the Colon and Rectum (Invasive)

Trends in SEER Incidence<sup>ab</sup> and U.S. Mortality<sup>c</sup> Using the Joinpoint Regression Program,  
1975-2007 With up to Four Joinpoints, 1992-2007 With up to Two Joinpoints,  
Males by Race/Ethnicity

	Joinpoint Trend 1		Joinpoint Trend 2		Joinpoint Trend 3		Joinpoint Trend 4		Joinpoint Trend 5		AAPC <sup>d</sup>	
	Years	APC	Years	APC	Years	APC	Years	APC	Years	APC	1998-2007	2003-2007
<u>SEER 9 Delay-Adjusted Incidence<sup>a</sup>, 1975-2007</u>												
All Races	1975-1985	1.1*	1985-1991	-1.2*	1991-1995	-3.2*	1995-1998	2.1	1998-2007	-3.1*	-3.1*	-3.1*
White	1975-1985	1.1*	1985-1991	-1.4*	1991-1995	-3.3*	1995-1998	2.2	1998-2007	-3.2*	-3.2*	-3.2*
Black	1975-1980	4.6	1980-2003	0.0	2003-2007	-4.8*					-2.2*	-4.8*
<u>SEER 13 Delay-Adjusted Incidence<sup>b</sup>, 1992-2007</u>												
All Races	1992-1995	-2.6*	1995-1998	1.7	1998-2007	-2.9*					-2.9*	-2.9*
White	1992-1995	-2.8*	1995-1998	1.7	1998-2007	-3.1*					-3.1*	-3.1*
Black	1992-2003	-0.2	2003-2007	-4.2*							-2.0*	-4.2*
<u>SEER 9 Observed Incidence<sup>a</sup>, 1975-2007</u>												
All Races	1975-1985	1.1*	1985-1991	-1.2*	1991-1995	-3.2*	1995-1998	2.2	1998-2007	-3.2*	-3.2*	-3.2*
White	1975-1985	1.1*	1985-1991	-1.4*	1991-1995	-3.3*	1995-1998	2.2	1998-2007	-3.3*	-3.3*	-3.3*
Black	1975-1980	4.6	1980-2003	-0.1	2003-2007	-5.2*					-2.4*	-5.2*
<u>SEER 13 Observed Incidence<sup>b</sup>, 1992-2007</u>												
All Races	1992-1995	-2.7*	1995-1998	1.7	1998-2007	-3.0*					-3.0*	-3.0*
White	1992-1995	-2.9*	1995-1998	1.8	1998-2007	-3.2*					-3.2*	-3.2*
White NH <sup>ef</sup>	1992-1995	-2.9*	1995-1998	1.8	1998-2007	-3.2*					-3.2*	-3.2*
Black	1992-2003	-0.2	2003-2007	-4.6*							-2.2*	-4.6*
Black NH <sup>ef</sup>	1992-2003	-0.2	2003-2007	-4.3*							-2.1*	-4.3*
API <sup>e</sup>	1992-2001	-0.4	2001-2007	-3.3*							-2.3*	-3.3*
AI/AN <sup>eg</sup>	1992-2007	-0.9									-0.9	-0.9
Hispanic <sup>f</sup>	1992-1994	-3.7	1994-1998	3.3	1998-2007	-2.3*					-2.3*	-2.3*
<u>U.S. Cancer Mortality<sup>c</sup>, 1975-2007</u>												
All Races	1975-1984	-0.1	1984-1990	-1.4*	1990-2002	-2.0*	2002-2005	-4.3*	2005-2007	-2.1	-2.8*	-3.2*
White	1975-1979	0.5	1979-1987	-0.8*	1987-2002	-2.1*	2002-2005	-4.5*	2005-2007	-2.1	-2.9*	-3.3*
Black	1975-1990	1.2*	1990-2000	-0.7*	2000-2007	-2.2*					-1.9*	-2.2*
<u>U.S. Cancer Mortality<sup>c</sup>, 1992-2007</u>												
All Races	1992-2002	-2.0*	2002-2005	-4.3*	2005-2007	-2.1					-2.8*	-3.2*
White	1992-2002	-2.1*	2002-2005	-4.4*	2005-2007	-2.1					-2.9*	-3.3*
White NH <sup>ef</sup>	1992-2002	-2.1*	2002-2007	-3.4*							-2.8*	-3.4*
Black	1992-2000	-0.7*	2000-2007	-2.2*							-1.9*	-2.2*
Black NH <sup>ef</sup>	1992-2007	-1.2*									-1.2*	-1.2*
API <sup>e</sup>	1992-2007	-2.4*									-2.4*	-2.4*
AI/AN <sup>eg</sup>	1992-1996	16.0	1996-2007	-2.0							-2.0	-2.0
Hispanic <sup>f</sup>	1992-1998	1.0*	1998-2007	-2.6*							-2.6*	-2.6*

Joinpoint Regression Program Version 3.4.3, April 2010, National Cancer Institute. (<http://srab.cancer.gov/joinpoint/>).

The APC is the Annual Percent Change based on rates age-adjusted to the 2000 US Std Population (19 age groups - Census P25-1130).

<sup>a</sup> Trends are from the SEER 9 areas (San Francisco, Connecticut, Detroit, Hawaii, Iowa, New Mexico, Seattle, Utah, and Atlanta).

<sup>b</sup> Trends are from the SEER 13 areas (SEER 9 Areas, Los Angeles, San Jose-Monterey, Rural Georgia, and the Alaska Native Registry).

<sup>c</sup> Trends are from US Mortality Files, National Center for Health Statistics, Centers for Disease Control and Prevention.

<sup>d</sup> The AAPC is the Average Annual Percent Change and is based on the APCs calculated by Joinpoint.

<sup>e</sup> API - Asian/Pacific Islander, AI/AN - American Indian/Alaska Native, NH - Non-Hispanic

<sup>f</sup> Hispanic and Non-Hispanic are not mutually exclusive from whites, blacks, Asian/Pacific Islanders, and American Indians/Alaska

Natives. Incidence data for Hispanics and Non-Hispanics are based on NHIA and exclude cases from the Alaska Native Registry.

The Hispanic and Non-Hispanic mortality trends exclude deaths from CT, DC, ME, MD, MN, NH, NY, ND, OK and VT.

<sup>g</sup> Data for American Indian/Alaska Native are based on the CHSDA (Contract Health Service Delivery Area) counties.

\* The APC/AAPC is significantly different from zero ( $p < .05$ ).

- Joinpoint regression line analysis could not be performed on data series.

Table 6.3  
Cancer of the Colon and Rectum (Invasive)

Trends in SEER Incidence<sup>ab</sup> and U.S. Mortality<sup>c</sup> Using the Joinpoint Regression Program,  
1975-2007 With up to Four Joinpoints, 1992-2007 With up to Two Joinpoints,  
Females by Race/Ethnicity

	Joinpoint Trend 1		Joinpoint Trend 2		Joinpoint Trend 3		Joinpoint Trend 4		Joinpoint Trend 5		AAPC <sup>d</sup>	
	Years	APC	Years	APC	Years	APC	Years	APC	Years	APC	1998-2007	2003-2007
<u>SEER 9 Delay-Adjusted Incidence<sup>a</sup>, 1975-2007</u>												
All Races	1975-1985	0.3	1985-1995	-1.9*	1995-1998	1.9	1998-2007	-2.2*			-2.2*	-2.2*
White	1975-1985	0.3	1985-1995	-2.0*	1995-1998	2.2	1998-2007	-2.4*			-2.4*	-2.4*
Black	1975-1980	2.8	1980-2007	-0.4*							-0.4*	-0.4*
<u>SEER 13 Delay-Adjusted Incidence<sup>b</sup>, 1992-2007</u>												
All Races	1992-1995	-1.8*	1995-1998	2.0	1998-2007	-2.2*					-2.2*	-2.2*
White	1992-1995	-1.7	1995-1998	2.0	1998-2007	-2.4*					-2.4*	-2.4*
Black	1992-2000	0.4	2000-2007	-1.5*							-1.1*	-1.5*
<u>SEER 9 Observed Incidence<sup>a</sup>, 1975-2007</u>												
All Races	1975-1985	0.3	1985-1995	-1.9*	1995-1998	2.0	1998-2007	-2.3*			-2.3*	-2.3*
White	1975-1985	0.3	1985-1995	-2.1*	1995-1998	2.2	1998-2007	-2.6*			-2.6*	-2.6*
Black	1975-2001	0.0	2001-2007	-2.1*							-1.4*	-2.1*
<u>SEER 13 Observed Incidence<sup>b</sup>, 1992-2007</u>												
All Races	1992-1995	-1.9*	1995-1998	2.0	1998-2007	-2.3*					-2.3*	-2.3*
White	1992-1995	-1.8	1995-1998	2.0	1998-2007	-2.5*					-2.5*	-2.5*
White NH <sup>ef</sup>	1992-1995	-1.8	1995-1998	2.2	1998-2007	-2.6*					-2.6*	-2.6*
Black	1992-2000	0.4	2000-2007	-1.8*							-1.3*	-1.8*
Black NH <sup>ef</sup>	1992-2000	0.3	2000-2007	-1.7*							-1.2*	-1.7*
API <sup>e</sup>	1992-2007	-0.9*									-0.9*	-0.9*
AI/AN <sup>eg</sup>	1992-2007	0.2									0.2	0.2
Hispanic <sup>f</sup>	1992-2007	-0.4									-0.4*	-0.4*
<u>U.S. Cancer Mortality<sup>c</sup>, 1975-2007</u>												
All Races	1975-1984	-1.0*	1984-2001	-1.8*	2001-2007	-3.2*					-2.7*	-3.2*
White	1975-1984	-1.2*	1984-2002	-2.0*	2002-2005	-4.2*	2005-2007	-1.4			-2.6*	-2.8*
Black	1975-1985	0.8*	1985-2001	-0.7*	2001-2007	-3.4*					-2.5*	-3.4*
<u>U.S. Cancer Mortality<sup>c</sup>, 1992-2007</u>												
All Races	1992-2001	-1.7*	2001-2005	-3.7*	2005-2007	-1.8					-2.6*	-2.8*
White	1992-2002	-1.9*	2002-2005	-4.4*	2005-2007	-1.3					-2.6*	-2.9*
White NH <sup>ef</sup>	1992-2002	-1.8*	2002-2005	-4.2*	2005-2007	-0.9					-2.4*	-2.6*
Black	1992-2001	-0.8*	2001-2007	-3.3*							-2.5*	-3.3*
Black NH <sup>ef</sup>	1992-2001	-0.7*	2001-2007	-3.2*							-2.4*	-3.2*
API <sup>e</sup>	1992-2007	-1.8*									-1.8*	-1.8*
AI/AN <sup>eg</sup>	1992-2007	-1.1									-1.1	-1.1
Hispanic <sup>f</sup>	1992-2007	-0.9*									-0.9*	-0.9*

Joinpoint Regression Program Version 3.4.3, April 2010, National Cancer Institute. (<http://srab.cancer.gov/joinpoint/>).

The APC is the Annual Percent Change based on rates age-adjusted to the 2000 US Std Population (19 age groups - Census P25-1130).

<sup>a</sup> Trends are from the SEER 9 areas (San Francisco, Connecticut, Detroit, Hawaii, Iowa, New Mexico, Seattle, Utah, and Atlanta).

<sup>b</sup> Trends are from the SEER 13 areas (SEER 9 Areas, Los Angeles, San Jose-Monterey, Rural Georgia, and the Alaska Native Registry).

<sup>c</sup> Trends are from US Mortality Files, National Center for Health Statistics, Centers for Disease Control and Prevention.

<sup>d</sup> The AAPC is the Average Annual Percent Change and is based on the APCs calculated by Joinpoint.

<sup>e</sup> API - Asian/Pacific Islander, AI/AN - American Indian/Alaska Native, NH - Non-Hispanic

<sup>f</sup> Hispanic and Non-Hispanic are not mutually exclusive from whites, blacks, Asian/Pacific Islanders, and American Indians/Alaska

Natives. Incidence data for Hispanics and Non-Hispanics are based on NHIA and exclude cases from the Alaska Native Registry.

The Hispanic and Non-Hispanic mortality trends exclude deaths from CT, DC, ME, MD, MN, NH, NY, ND, OK and VT.

<sup>g</sup> Data for American Indian/Alaska Native are based on the CHSDA (Contract Health Service Delivery Area) counties.

\* The APC/AAPC is significantly different from zero ( $p < .05$ ).

- Joinpoint regression line analysis could not be performed on data series.

Table 6.4  
Cancer of the Colon (Invasive) and Cancer of the Rectum (Invasive)

Trends in SEER 9 Observed Incidence<sup>a</sup> Using the Joinpoint Regression Program,  
1975-2007 With up to Four Joinpoints,  
By Race and Sex

		<u>Joinpoint Trend 1</u>		<u>Joinpoint Trend 2</u>		<u>Joinpoint Trend 3</u>		<u>Joinpoint Trend 4</u>		<u>Joinpoint Trend 5</u>		<u>AAPC<sup>b</sup></u>
		Years	APC	Years	APC	Years	APC	Years	APC	Years	APC	2003-2007
<u>SEER 9 Observed Incidence<sup>a</sup> for Cancer of the Colon, 1975-2007</u>												
All Races	Both Sexes	1975-1985	1.2*	1985-1995	-1.7*	1995-1998	0.7	1998-2002	-1.6*	2002-2007	-3.6*	-3.6*
All Races	Male	1975-1985	1.7*	1985-2002	-1.5*	2002-2007	-4.2*					-4.2*
All Races	Female	1975-1985	0.6*	1985-1993	-1.8*	1993-2001	-0.2	2001-2007	-3.0*			-3.0*
White	Both Sexes	1975-1985	1.1*	1985-1995	-1.9*	1995-1998	1.0	1998-2002	-2.0*	2002-2007	-3.5*	-3.5*
White	Male	1975-1985	1.7*	1985-1991	-1.4*	1991-1995	-3.1*	1995-1998	1.8	1998-2007	-3.4*	-3.4*
White	Female	1975-1985	0.6*	1985-1993	-2.1*	1993-2001	-0.2	2001-2007	-3.2*			-3.2*
Black	Both Sexes	1975-1980	3.6*	1980-2002	-0.1	2002-2007	-3.6*					-3.6*
Black	Male	1975-1987	1.8*	1987-2003	-0.4	2003-2007	-5.7*					-5.7*
Black	Female	1975-2000	0.0	2000-2007	-2.2*							-2.2*
<u>SEER 9 Observed Incidence<sup>a</sup> for Cancer of the Rectum, 1975-2007</u>												
All Races	Both Sexes	1975-1987	-0.3	1987-1995	-2.4*	1995-1998	2.7	1998-2007	-2.6*			-2.6*
All Races	Male	1975-1989	-0.3	1989-1994	-3.6*	1994-1998	1.8	1998-2007	-2.8*			-2.8*
All Races	Female	1975-1984	-0.2	1984-1995	-2.2*	1995-1998	2.5	1998-2007	-2.4*			-2.4*
White	Both Sexes	1975-1985	-0.1	1985-1995	-2.3*	1995-1998	2.6	1998-2007	-2.9*			-2.9*
White	Male	1975-1989	-0.3	1989-1994	-3.9*	1994-1999	1.1	1999-2007	-3.5*			-3.5*
White	Female	1975-1984	-0.2	1984-1995	-2.3*	1995-1998	2.7	1998-2007	-2.9*			-2.9*
Black	Both Sexes	1975-2007	-0.2									-0.2
Black	Male	1975-2007	-0.1									-0.1
Black	Female	1975-2007	-0.2									-0.2

Joinpoint Regression Program Version 3.4.3, April 2010, National Cancer Institute. (<http://srab.cancer.gov/joinpoint/>).

The APC is the Annual Percent Change based on rates age-adjusted to the 2000 US Std Population (19 age groups - Census P25-1130).

Trends are from the SEER 9 areas (San Francisco, Connecticut, Detroit, Hawaii, Iowa, New Mexico, Seattle, Utah, and Atlanta).

The AAPC is the Average Annual Percent Change and is based on the APCs calculated by Joinpoint.

\* The APC/AAPC is significantly different from zero ( $p < .05$ ).

- Joinpoint regression line analysis could not be performed on data series.

a  
b  
\*  
-

Table 6.5  
Cancer of the Colon and Rectum (Invasive)

Delay-adjusted SEER Incidence<sup>a</sup> Rates by Year, Race and Sex

Year of Diagnosis:	All Races			Whites			Blacks		
	Total	Males	Females	Total	Males	Females	Total	Males	Females
1975	59.52	68.43	53.64	60.18	69.75	54.04	56.85	59.33	54.66
1976	61.36	71.74	54.15	62.14	72.67	55.02	55.06	58.53	51.32
1977	62.41	73.50	54.96	63.20	74.32	55.77	60.72	75.75	51.47
1978	62.05	72.37	55.26	62.78	73.89	55.59	62.16	65.70	60.64
1979	62.37	74.11	54.57	62.95	75.20	54.94	58.57	61.64	56.29
1980	63.74	74.53	56.54	63.95	74.87	56.84	70.76	79.68	64.12
1981	64.24	75.84	56.47	64.88	76.71	57.13	62.79	72.84	55.94
1982	62.78	75.19	54.50	63.44	76.25	55.05	61.26	68.98	55.93
1983	63.67	75.59	55.61	64.28	76.58	56.06	66.75	75.69	61.15
1984	64.82	77.69	56.07	65.83	79.28	56.72	62.41	70.28	58.22
1985	66.30	79.16	57.33	67.21	80.20	58.39	63.90	74.15	56.29
1986	64.19	77.80	54.72	64.59	78.91	54.74	64.62	73.09	58.64
1987	62.72	77.49	52.67	62.90	78.22	52.62	66.26	77.53	59.05
1988	61.37	75.18	51.81	61.55	75.76	51.74	63.11	72.46	56.82
1989	61.70	74.96	52.43	61.98	75.44	52.71	64.44	79.36	54.65
1990	60.72	74.37	51.31	60.71	74.78	51.09	66.71	74.95	61.53
1991	59.50	72.91	50.08	59.33	73.13	49.71	65.69	76.41	58.25
1992	58.02	70.45	49.21	57.88	70.75	48.74	65.52	78.48	57.41
1993	56.83	68.46	48.35	56.40	68.16	47.85	64.46	77.89	55.36
1994	55.65	66.30	47.73	55.43	66.38	47.22	64.62	75.51	58.11
1995	54.07	63.84	46.96	53.76	63.47	46.66	62.07	71.29	56.20
1996	54.81	65.58	46.74	54.84	65.99	46.49	58.51	66.73	52.89
1997	56.48	68.17	48.01	56.53	68.05	48.18	64.52	77.41	56.17
1998	56.82	67.10	49.35	56.82	67.36	49.12	62.94	74.10	56.00
1999	55.55	65.77	47.93	55.43	65.96	47.35	63.36	72.09	58.27
2000	54.21	63.76	46.82	53.95	63.26	46.66	64.41	74.11	58.04
2001	53.48	62.76	46.18	52.93	62.42	45.39	64.13	74.51	57.41
2002	52.92	61.11	46.48	52.25	60.11	45.95	62.60	73.14	55.95
2003	50.47	59.01	43.67	50.07	58.32	43.35	61.68	74.00	53.90
2004	49.49	58.04	42.86	48.82	57.69	41.82	61.65	72.83	54.15
2005	47.13	54.29	41.43	46.91	54.38	40.85	56.71	62.64	53.24
2006	46.05	52.07	41.15	45.43	51.55	40.30	56.81	63.39	52.46
2007	45.28	51.60	40.10	44.63	50.90	39.46	55.80	62.47	50.99

Additional information on the model used to delay-adjust SEER Incidence rates can be found at (<http://srab.cancer.gov/delay/>).

<sup>a</sup> SEER 9 areas (San Francisco, Connecticut, Detroit, Hawaii, Iowa, New Mexico, Seattle, Utah, and Atlanta).  
Rates are per 100,000 and are age-adjusted to the 2000 US Std Population (19 age groups - Census P25-1130).

- Delay-adjusted rate is not shown for observed rates based on less than 16 cases for the time interval.

Table 6.6  
Cancer of the Colon and Rectum (Invasive)

Age-adjusted SEER Incidence<sup>a</sup> Rates by Year, Race and Sex

Year of Diagnosis:	All Races			Whites			Blacks		
	Total	Males	Females	Total	Males	Females	Total	Males	Females
1975	59.52	68.43	53.64	60.18	69.75	54.04	56.85	59.33	54.66
1976	61.36	71.74	54.15	62.14	72.67	55.02	55.06	58.53	51.32
1977	62.41	73.50	54.96	63.20	74.32	55.77	60.72	75.75	51.47
1978	62.05	72.37	55.26	62.78	73.89	55.59	62.16	65.70	60.64
1979	62.37	74.11	54.57	62.95	75.20	54.94	58.57	61.64	56.29
1980	63.74	74.53	56.54	63.95	74.87	56.84	70.76	79.68	64.12
1981	64.24	75.84	56.47	64.88	76.71	57.13	62.79	72.84	55.94
1982	62.78	75.19	54.50	63.44	76.25	55.04	61.25	68.97	55.92
1983	63.67	75.59	55.60	64.27	76.57	56.05	66.74	75.67	61.14
1984	64.82	77.68	56.07	65.82	79.27	56.71	62.39	70.26	58.20
1985	66.29	79.15	57.33	67.20	80.18	58.38	63.87	74.12	56.27
1986	64.18	77.79	54.71	64.57	78.89	54.72	64.59	73.05	58.61
1987	62.70	77.47	52.66	62.87	78.20	52.60	66.21	77.48	59.01
1988	61.36	75.17	51.80	61.53	75.74	51.73	63.07	72.41	56.78
1989	61.68	74.93	52.41	61.95	75.40	52.68	64.38	79.28	54.60
1990	60.70	74.34	51.29	60.67	74.73	51.06	66.63	74.85	61.46
1991	59.47	72.88	50.06	59.28	73.07	49.67	65.59	76.29	58.16
1992	57.98	70.41	49.18	57.83	70.69	48.69	65.41	78.35	57.31
1993	56.79	68.41	48.32	56.33	68.09	47.80	64.33	77.74	55.25
1994	55.60	66.25	47.70	55.36	66.30	47.16	64.47	75.33	57.98
1995	54.02	63.79	46.92	53.68	63.37	46.59	61.90	71.10	56.04
1996	54.75	65.51	46.69	54.74	65.88	46.41	58.33	66.52	52.72
1997	56.41	68.08	47.95	56.41	67.91	48.08	64.29	77.13	55.97
1998	56.73	67.00	49.27	56.69	67.21	49.02	62.70	73.81	55.78
1999	55.45	65.66	47.85	55.26	65.76	47.21	63.03	71.71	57.97
2000	54.09	63.63	46.72	53.76	63.03	46.50	64.03	73.67	57.69
2001	53.34	62.61	46.07	52.71	62.16	45.20	63.68	73.99	57.02
2002	52.76	60.93	46.34	52.00	59.81	45.73	62.09	72.55	55.50
2003	50.29	58.80	43.52	49.78	57.98	43.09	61.10	73.31	53.39
2004	49.27	57.79	42.67	48.48	57.29	41.53	60.98	72.03	53.56
2005	46.89	54.00	41.21	46.52	53.93	40.51	55.98	61.83	52.56
2006	45.75	51.73	40.89	44.97	51.04	39.90	55.95	62.44	51.66
2007	44.65	50.89	39.55	43.79	49.94	38.71	54.30	60.78	49.62
1975-2007	56.90	67.27	49.34	57.06	67.62	49.37	61.97	71.36	55.82

<sup>a</sup> SEER 9 areas (San Francisco, Connecticut, Detroit, Hawaii, Iowa, New Mexico, Seattle, Utah, and Atlanta). Rates are per 100,000 and are age-adjusted to the 2000 US Std Population (19 age groups - Census P25-1130).  
- Statistic not shown. Rate based on less than 16 cases for the time interval.

Table 6.7  
Cancer of the Colon (Invasive)

Age-adjusted SEER Incidence<sup>a</sup> Rates by Year, Race and Sex

Year of Diagnosis:	All Races			Whites			Blacks		
	Total	Males	Females	Total	Males	Females	Total	Males	Females
1975	41.34	45.39	38.89	41.72	46.13	39.15	42.83	44.14	41.64
1976	43.06	47.76	39.96	43.44	48.19	40.39	43.11	43.60	41.95
1977	43.97	49.55	40.35	44.66	50.06	41.19	45.42	58.42	37.66
1978	43.85	49.13	40.60	44.11	49.87	40.62	47.77	48.81	47.88
1979	43.77	50.20	39.61	44.10	51.03	39.70	44.68	45.58	43.97
1980	45.57	50.67	42.34	45.59	50.88	42.34	55.12	58.32	52.74
1981	45.47	51.34	41.71	45.88	51.95	42.11	46.87	50.67	44.36
1982	45.76	53.45	40.67	46.07	54.09	40.85	48.27	52.48	45.19
1983	46.11	53.04	41.63	46.42	53.49	41.87	50.20	58.52	45.25
1984	46.51	54.61	41.31	47.03	55.57	41.56	48.68	54.02	46.05
1985	47.87	55.03	42.96	48.41	55.60	43.65	49.87	57.34	44.21
1986	46.79	54.36	41.58	47.05	55.16	41.51	49.27	55.19	45.46
1987	45.23	54.42	39.16	45.14	54.50	39.07	51.35	59.84	45.73
1988	44.30	52.59	38.66	44.26	52.85	38.41	48.86	54.02	45.48
1989	44.36	52.41	38.96	44.48	52.47	39.21	48.85	60.28	41.54
1990	44.19	51.97	38.93	44.06	51.98	38.76	52.02	57.83	48.45
1991	43.60	51.83	37.92	43.29	51.84	37.41	51.74	57.75	47.67
1992	42.28	49.65	37.20	42.05	49.77	36.70	50.79	60.21	45.17
1993	41.60	48.93	36.32	41.07	48.63	35.66	51.10	60.41	45.02
1994	40.82	46.93	36.32	40.62	47.03	35.81	50.11	57.03	46.30
1995	39.63	45.02	35.85	39.28	44.63	35.47	48.74	54.79	45.42
1996	39.36	45.35	34.89	39.31	45.77	34.46	44.50	48.40	41.93
1997	41.10	48.39	35.98	41.12	48.26	36.16	49.10	58.82	42.55
1998	41.02	46.80	37.02	40.94	47.08	36.60	47.43	54.41	43.71
1999	39.79	45.40	35.69	39.58	45.38	35.16	48.40	54.70	44.84
2000	39.35	44.41	35.46	38.98	43.89	35.17	50.84	57.14	46.88
2001	39.07	43.80	35.41	38.65	43.55	34.80	48.62	55.17	44.47
2002	38.41	42.89	34.90	37.72	41.89	34.38	48.72	55.90	44.16
2003	36.61	40.97	33.10	36.27	40.30	32.91	46.67	55.23	41.34
2004	35.90	40.86	32.17	35.37	40.61	31.36	46.48	53.44	41.89
2005	33.82	37.14	31.20	33.60	37.26	30.64	42.76	46.37	40.93
2006	33.17	36.29	30.62	32.65	35.83	29.97	43.31	47.42	40.50
2007	31.88	34.59	29.72	31.54	34.40	29.29	40.07	42.92	37.86
1975-2007	41.07	46.81	36.97	41.10	47.00	36.90	47.74	53.83	43.89

<sup>a</sup> SEER 9 areas (San Francisco, Connecticut, Detroit, Hawaii, Iowa, New Mexico, Seattle, Utah, and Atlanta). Rates are per 100,000 and are age-adjusted to the 2000 US Std Population (19 age groups - Census P25-1130).  
- Statistic not shown. Rate based on less than 16 cases for the time interval.

Table 6.8  
Cancer of the Rectum (Invasive)

Age-adjusted SEER Incidence<sup>a</sup> Rates by Year, Race and Sex

Year of Diagnosis:	All Races			Whites			Blacks		
	Total	Males	Females	Total	Males	Females	Total	Males	Females
1975	18.18	23.04	14.75	18.45	23.62	14.89	14.02	15.19	13.01
1976	18.30	23.98	14.19	18.70	24.48	14.63	11.96	14.93	9.37
1977	18.44	23.95	14.60	18.54	24.26	14.59	15.30	17.33	13.81
1978	18.19	23.25	14.66	18.67	24.02	14.97	14.39	16.89	12.76
1979	18.60	23.91	14.96	18.85	24.17	15.24	13.90	16.06	12.31
1980	18.18	23.86	14.20	18.36	23.99	14.51	15.65	21.36	11.38
1981	18.77	24.50	14.77	19.00	24.76	15.02	15.92	22.17	11.59
1982	17.02	21.74	13.83	17.36	22.16	14.19	12.98	16.49	10.73
1983	17.56	22.55	13.98	17.85	23.09	14.18	16.54	17.15	15.89
1984	18.31	23.07	14.76	18.79	23.70	15.15	13.71	16.24	12.15
1985	18.42	24.12	14.36	18.79	24.58	14.72	14.00	16.79	12.06
1986	17.39	23.43	13.13	17.52	23.73	13.21	15.32	17.86	13.15
1987	17.47	23.05	13.50	17.74	23.69	13.53	14.87	17.64	13.29
1988	17.06	22.58	13.14	17.27	22.89	13.32	14.21	18.38	11.30
1989	17.32	22.52	13.45	17.47	22.93	13.47	15.52	19.00	13.05
1990	16.51	22.37	12.36	16.61	22.75	12.29	14.61	17.02	13.01
1991	15.88	21.05	12.14	15.99	21.23	12.26	13.85	18.55	10.50
1992	15.71	20.76	11.98	15.78	20.91	11.99	14.62	18.14	12.14
1993	15.19	19.48	12.00	15.27	19.46	12.14	13.23	17.33	10.22
1994	14.78	19.32	11.38	14.74	19.27	11.35	14.36	18.30	11.68
1995	14.38	18.77	11.07	14.40	18.74	11.13	13.16	16.31	10.62
1996	15.39	20.16	11.81	15.44	20.10	11.95	13.82	18.12	10.79
1997	15.31	19.70	11.98	15.30	19.65	11.91	15.19	18.31	13.42
1998	15.71	20.20	12.26	15.75	20.13	12.41	15.27	19.41	12.07
1999	15.66	20.26	12.16	15.68	20.38	12.05	14.64	17.01	13.13
2000	14.75	19.22	11.26	14.79	19.14	11.33	13.19	16.53	10.82
2001	14.28	18.80	10.65	14.06	18.61	10.40	15.06	18.82	12.54
2002	14.35	18.04	11.44	14.28	17.92	11.35	13.37	16.65	11.34
2003	13.68	17.82	10.42	13.51	17.67	10.19	14.43	18.08	12.05
2004	13.37	16.93	10.51	13.11	16.68	10.17	14.50	18.59	11.67
2005	13.07	16.86	10.01	12.92	16.67	9.87	13.22	15.46	11.63
2006	12.58	15.45	10.27	12.32	15.21	9.93	12.64	15.02	11.16
2007	12.77	16.30	9.83	12.25	15.54	9.42	14.22	17.86	11.76
1975-2007	15.84	20.46	12.37	15.95	20.62	12.46	14.23	17.53	11.93

<sup>a</sup> SEER 9 areas (San Francisco, Connecticut, Detroit, Hawaii, Iowa, New Mexico, Seattle, Utah, and Atlanta). Rates are per 100,000 and are age-adjusted to the 2000 US Std Population (19 age groups - Census P25-1130).  
- Statistic not shown. Rate based on less than 16 cases for the time interval.



Table 6.9  
Cancer of the Colon and Rectum (Invasive)

Age-adjusted U.S. Death<sup>a</sup> Rates by Year, Race and Sex

Year of Death:	All Races			Whites			Blacks		
	Total	Males	Females	Total	Males	Females	Total	Males	Females
1975	28.09	32.84	24.96	28.30	33.24	25.06	26.79	30.09	24.55
1976	28.58	33.34	25.44	28.74	33.76	25.45	28.23	31.16	26.26
1977	28.19	33.21	24.87	28.34	33.49	24.97	27.61	31.44	24.92
1978	28.54	33.75	25.13	28.70	34.12	25.17	27.91	31.20	25.66
1979	28.15	33.56	24.63	28.25	33.92	24.57	28.16	31.57	25.96
1980	28.05	33.74	24.35	28.12	33.99	24.32	28.81	33.18	25.89
1981	27.52	32.95	23.97	27.53	33.16	23.85	28.93	32.83	26.32
1982	27.24	32.96	23.55	27.21	33.11	23.42	29.11	33.71	26.12
1983	27.12	33.08	23.23	27.13	33.32	23.11	28.67	32.90	25.82
1984	27.35	33.02	23.61	27.30	33.12	23.49	29.58	34.65	26.22
1985	26.93	32.66	23.11	26.75	32.74	22.77	30.49	34.10	28.04
1986	26.16	32.05	22.31	26.00	32.01	22.07	29.82	35.36	26.35
1987	25.89	31.91	21.95	25.68	31.85	21.63	29.85	35.10	26.48
1988	25.28	31.08	21.46	25.08	31.04	21.16	29.18	34.29	25.88
1989	25.01	30.80	21.16	24.70	30.52	20.82	30.05	36.37	26.07
1990	24.65	30.77	20.64	24.25	30.43	20.18	30.77	37.64	26.59
1991	24.01	29.64	20.30	23.63	29.35	19.85	30.02	35.80	26.50
1992	23.62	29.32	19.85	23.25	28.99	19.42	29.47	36.23	25.43
1993	23.31	28.56	19.77	22.88	28.18	19.28	29.77	35.84	26.04
1994	22.92	28.28	19.28	22.50	27.89	18.84	29.04	35.66	24.88
1995	22.59	27.65	19.14	22.11	27.16	18.64	29.54	36.30	25.47
1996	21.86	26.71	18.51	21.39	26.29	17.98	28.59	34.52	24.86
1997	21.47	26.23	18.11	20.95	25.68	17.59	28.84	35.07	24.80
1998	21.19	25.62	18.03	20.68	25.13	17.48	28.31	33.90	24.78
1999	20.93	25.48	17.75	20.43	24.99	17.20	28.51	34.50	24.70
2000	20.65	25.05	17.48	20.14	24.43	17.01	28.14	34.94	23.87
2001	20.08	24.25	17.06	19.54	23.72	16.46	27.66	33.17	24.18
2002	19.65	23.83	16.52	19.13	23.23	16.03	26.92	33.37	22.82
2003	19.00	22.97	16.05	18.46	22.43	15.48	26.43	32.09	22.72
2004	17.93	21.60	15.17	17.45	21.08	14.69	24.80	30.28	21.19
2005	17.38	21.01	14.64	16.82	20.40	14.09	24.89	30.48	21.20
2006	17.10	20.51	14.53	16.59	19.87	14.08	24.25	30.84	20.12
2007	16.72	20.05	14.15	16.23	19.49	13.69	23.43	29.06	19.70
1975-2007	23.11	27.88	19.80	22.85	27.66	19.50	28.10	33.50	24.64

<sup>a</sup> US Mortality Files, National Center for Health Statistics, Centers for Disease Control and Prevention.  
Rates are per 100,000 and are age-adjusted to the 2000 US Std Population (19 age groups - Census P25-1130).  
- Statistic not shown. Rate based on less than 16 cases for the time interval.

Table 6.10  
Cancer of the Colon and Rectum (Invasive)

SEER Incidence<sup>a</sup> and U.S. Death<sup>b</sup> Rates, Age-Adjusted and Age-Specific Rates, by Race and Sex

	All Races			Whites			Blacks		
	Total	Males	Females	Total	Males	Females	Total	Males	Females
<u>SEER Incidence</u>									
<u>Age at Diagnosis</u>									
Age-Adjusted Rates, 2003-2007									
All ages	47.9	55.8	41.7	47.4	55.4	40.9	58.9	68.1	52.6
Under 65	18.1	20.6	15.8	17.4	19.9	15.0	24.4	27.1	22.2
65 and over	254.2	299.1	221.2	254.5	300.2	220.6	297.0	351.2	262.6
All ages (IARC world std) <sup>c</sup>	29.7	34.6	25.5	29.1	34.1	24.8	37.7	43.3	33.6
Age-Specific Rates, 2003-2007									
<1	-	-	-	-	-	-	-	-	-
1-4	-	-	-	-	-	-	-	-	-
5-9	-	-	-	-	-	-	-	-	-
10-14	-	-	-	-	-	-	-	-	-
15-19	0.3	0.2	0.3	0.3	0.2	0.3	-	-	-
20-24	0.9	0.8	1.0	0.9	0.8	1.1	0.9	-	-
25-29	2.0	2.0	1.9	2.0	2.0	2.0	1.3	1.2	1.4
30-34	4.2	4.2	4.3	4.2	4.3	4.2	4.2	3.3	5.1
35-39	8.0	8.5	7.4	7.7	8.3	7.0	9.1	9.3	8.8
40-44	15.2	15.7	14.7	14.5	14.8	14.3	19.2	20.7	17.9
45-49	28.2	30.9	25.5	27.3	30.1	24.4	34.0	35.5	32.7
50-54	54.5	61.2	48.0	51.6	58.7	44.5	76.4	80.4	72.9
55-59	75.6	89.0	62.9	72.2	85.9	59.0	106.3	123.1	92.4
60-64	111.1	132.5	91.4	107.5	128.8	87.6	158.8	187.1	136.4
65-69	169.9	204.2	140.1	166.9	201.0	136.6	217.7	259.5	186.0
70-74	223.1	271.5	184.0	222.0	270.9	181.6	274.4	326.0	238.0
75-79	283.0	335.0	245.4	284.5	337.6	245.6	329.9	389.8	292.8
80-84	338.9	392.6	305.1	343.4	398.4	308.7	374.4	458.5	328.2
85+	356.2	394.8	337.8	360.5	401.6	341.2	372.5	414.8	354.6
<u>U.S. Mortality</u>									
<u>Age at Death</u>									
Age-Adjusted Rates, 2003-2007									
All ages	17.6	21.2	14.9	17.1	20.6	14.4	24.7	30.5	21.0
Under 65	5.0	5.9	4.2	4.7	5.6	3.9	8.3	9.9	7.0
65 and over	104.4	126.6	88.9	102.7	124.6	87.1	138.3	173.1	117.4
All ages (IARC world std) <sup>c</sup>	9.9	12.0	8.2	9.5	11.6	7.9	14.6	18.0	12.2
Age-Specific Rates, 2003-2007									
<1	-	-	-	-	-	-	-	-	-
1-4	-	-	-	-	-	-	-	-	-
5-9	-	-	-	-	-	-	-	-	-
10-14	-	-	-	-	-	-	-	-	-
15-19	0.1	0.1	0.0	0.1	0.1	-	-	-	-
20-24	0.2	0.2	0.1	0.1	0.2	0.1	0.2	0.3	-
25-29	0.5	0.5	0.4	0.4	0.5	0.4	0.6	0.8	0.5
30-34	1.0	1.0	0.9	0.9	1.0	0.9	1.4	1.5	1.3
35-39	1.9	2.1	1.8	1.8	2.0	1.7	2.8	2.9	2.8
40-44	3.9	4.1	3.6	3.6	3.9	3.2	6.0	6.4	5.7
45-49	7.5	8.4	6.6	6.9	7.8	6.0	12.4	14.0	11.0
50-54	13.5	15.7	11.4	12.5	14.5	10.4	23.3	27.5	19.8
55-59	21.9	26.3	17.7	20.5	24.8	16.4	36.6	44.1	30.4
60-64	35.2	43.7	27.5	33.3	41.4	25.7	57.9	73.1	46.0
65-69	53.2	66.9	41.2	51.3	64.7	39.4	79.4	101.2	63.2
70-74	76.4	95.4	61.0	74.5	93.2	59.1	108.0	139.0	86.8
75-79	107.5	132.7	89.2	105.4	129.9	87.3	147.0	191.0	120.8
80-84	149.4	182.9	128.6	147.9	181.4	126.8	192.2	240.7	166.7
85+	218.1	246.8	204.9	217.5	246.5	204.2	253.1	292.7	237.2

<sup>a</sup> SEER 17 areas. Rates are per 100,000 and are age-adjusted to the 2000 US Std Population (19 age groups - Census P25-1130), unless noted.

<sup>b</sup> US Mortality Files, National Center for Health Statistics, Centers for Disease Control and Prevention.

<sup>c</sup> Rates are per 100,000 and are age-adjusted to the 2000 US Std Population (19 age groups - Census P25-1130), unless noted.

- Rates are per 100,000 and are age-adjusted to the IARC world standard population.

- Statistic not shown. Rate based on less than 16 cases for the time interval.

Table 6.11  
Cancer of the Colon (Invasive) and Cancer of the Rectum (Invasive)  
SEER Incidence<sup>a</sup> Rates, Age-Adjusted and Age-Specific Rates, by Race and Sex

	All Races			Whites			Blacks		
	Total	Males	Females	Total	Males	Females	Total	Males	Females
<u>Cancer of the Colon</u>									
<u>Age at Diagnosis</u>									
Age-Adjusted Rates, 2003-2007									
All ages	34.5	38.9	31.2	34.1	38.6	30.6	44.9	50.8	41.0
Under 65	11.5	12.7	10.5	11.0	12.3	9.8	17.2	18.5	16.2
65 and over	193.5	219.9	174.3	193.9	220.7	174.1	236.2	274.2	212.2
All ages (IARC world std) <sup>b</sup>	20.7	23.3	18.5	20.3	23.0	18.0	28.2	31.7	25.7
Age-Specific Rates, 2003-2007									
<1	-	-	-	-	-	-	-	-	-
1-4	-	-	-	-	-	-	-	-	-
5-9	-	-	-	-	-	-	-	-	-
10-14	-	-	-	-	-	-	-	-	-
15-19	0.2	0.2	0.2	0.2	0.2	0.3	-	-	-
20-24	0.6	0.5	0.6	0.6	0.5	0.7	0.6	-	-
25-29	1.2	1.2	1.2	1.2	1.2	1.2	0.9	-	1.0
30-34	2.7	2.6	2.7	2.6	2.7	2.6	2.9	2.1	3.7
35-39	4.6	4.8	4.5	4.5	4.7	4.2	5.3	5.4	5.2
40-44	9.2	9.4	9.1	8.9	8.9	8.8	12.1	13.0	11.2
45-49	16.9	17.7	16.1	16.3	17.2	15.3	22.2	22.4	22.0
50-54	33.5	36.3	30.8	31.5	35.0	28.2	51.9	51.8	52.0
55-59	48.7	55.3	42.5	46.1	53.2	39.2	77.8	86.9	70.2
60-64	75.7	86.8	65.6	72.7	84.1	62.1	120.6	137.3	107.4
65-69	120.4	138.7	104.5	118.1	136.1	102.0	165.9	192.6	145.6
70-74	165.6	193.9	142.6	164.4	193.3	140.6	214.8	252.7	188.0
75-79	215.9	247.1	193.3	217.2	248.9	194.0	262.1	301.0	238.0
80-84	267.4	300.7	246.5	271.2	305.1	249.9	300.5	363.9	265.6
85+	288.5	311.9	277.3	292.0	317.6	280.0	316.0	349.0	302.1
<u>Cancer of the Rectum</u>									
<u>Age at Diagnosis</u>									
Age-Adjusted Rates, 2003-2007									
All ages	13.4	16.9	10.6	13.3	16.8	10.4	14.0	17.2	11.6
Under 65	6.6	7.9	5.3	6.4	7.7	5.1	7.2	8.6	6.0
65 and over	60.6	79.2	46.9	60.7	79.5	46.5	60.9	77.0	50.5
All ages (IARC world std) <sup>b</sup>	9.0	11.3	7.0	8.8	11.1	6.8	9.5	11.6	7.8
Age-Specific Rates, 2003-2007									
<1	-	-	-	-	-	-	-	-	-
1-4	-	-	-	-	-	-	-	-	-
5-9	-	-	-	-	-	-	-	-	-
10-14	-	-	-	-	-	-	-	-	-
15-19	0.1	-	-	-	-	-	-	-	-
20-24	0.4	0.3	0.4	0.4	0.3	0.4	-	-	-
25-29	0.8	0.8	0.8	0.8	0.8	0.8	-	-	-
30-34	1.6	1.6	1.6	1.6	1.6	1.5	1.3	1.2	1.3
35-39	3.3	3.7	2.9	3.2	3.6	2.8	3.7	3.9	3.6
40-44	6.0	6.3	5.6	5.7	5.9	5.4	7.1	7.7	6.6
45-49	11.3	13.2	9.5	11.0	12.9	9.2	11.8	13.0	10.7
50-54	20.9	24.9	17.1	20.0	23.7	16.4	24.5	28.7	20.9
55-59	26.9	33.7	20.4	26.2	32.7	19.8	28.5	36.2	22.2
60-64	35.3	45.7	25.8	34.8	44.7	25.5	38.2	49.8	29.0
65-69	49.5	65.4	35.6	48.9	64.9	34.7	51.8	66.9	40.4
70-74	57.5	77.6	41.4	57.6	77.6	41.0	59.6	73.3	50.0
75-79	67.1	87.9	52.1	67.3	88.6	51.6	67.8	88.8	54.8
80-84	71.5	91.9	58.7	72.1	93.3	58.8	73.9	94.6	62.5
85+	67.7	82.9	60.5	68.5	84.0	61.2	56.4	65.9	52.5

<sup>a</sup> SEER 17 areas. Rates are per 100,000 and are age-adjusted to the 2000 US Std Population (19 age groups - Census P25-1130), unless noted.

<sup>b</sup> Rates are per 100,000 and are age-adjusted to the IARC world standard population.

- Statistic not shown. Rate based on less than 16 cases for the time interval.

Table 6.12  
Cancer of the Colon and Rectum (Invasive)

5-Year Relative and Period Survival (Percent) by Race, Sex, Diagnosis Year, Stage and Age

	All Races			Whites			Blacks		
	Total	Males	Females	Total	Males	Females	Total	Males	Females
5-Year Relative Survival (Percent)									
Year of Diagnosis:									
1960-1963 <sup>a</sup>	-	-	-	-	-	-	-	-	-
1970-1973 <sup>a</sup>	-	-	-	-	-	-	-	-	-
1975-1977 <sup>b</sup>	51.0	50.0	51.9	51.2	50.3	52.0	46.3	44.6	47.3
1978-1980 <sup>b</sup>	52.4	51.4	53.3	52.7	51.7	53.7	46.2	44.3	47.5
1981-1983 <sup>b</sup>	55.3	54.9	55.6	55.6	55.5	55.7	47.5	44.0	50.3
1984-1986 <sup>b</sup>	58.7	58.6	58.7	59.4	59.4	59.4	49.2	48.2	50.0
1987-1989 <sup>b</sup>	60.6	60.8	60.4	61.1	61.5	60.7	53.3	51.0	55.2
1990-1992 <sup>b</sup>	62.2	62.1	62.4	63.0	62.8	63.2	53.6	55.3	52.1
1993-1995 <sup>b</sup>	61.1	60.7	61.5	61.7	61.2	62.1	52.9	52.0	53.6
1996-1998 <sup>b</sup>	63.7	63.5	63.9	64.3	64.1	64.6	55.1	55.7	54.7
1999-2006 <sup>b</sup>	66.6 <sup>e</sup>	66.9 <sup>e</sup>	66.3 <sup>e</sup>	67.9 <sup>e</sup>	68.4 <sup>e</sup>	67.3 <sup>e</sup>	56.7 <sup>e</sup>	55.7 <sup>e</sup>	57.5 <sup>e</sup>
5-Year Period Survival (Percent) <sup>cd</sup>									
Year of Diagnosis:									
1999-2006	65.9	65.9	65.9	66.7	66.9	66.5	57.4	56.2	58.4
Stage Distribution (%) 1999-2006 <sup>c</sup>									
All Stages									
Number of cases	216,332	109,322	107,010	175,966	89,586	86,380	21,989	10,145	11,844
Percent	100%	100%	100%	100%	100%	100%	100%	100%	100%
Localized	39	40	38	39	40	38	35	35	35
Regional	37	37	37	37	37	38	35	35	35
Distant	19	19	19	19	19	19	24	25	24
Unstaged	5	4	5	5	4	5	6	5	6
5-Year Relative Survival (Percent), 1999-2006 <sup>c</sup>									
Age at Diagnosis:									
Ages <45	67.1	65.9	68.5	68.7	67.1	70.6	59.0	57.6	60.4
Ages 45-54	68.9	68.0	70.1	70.0	69.1	71.1	59.1	56.8	61.3
Ages 55-64	67.5	67.1	68.1	68.5	68.0	69.2	59.0	58.5	59.5
Ages 65-74	66.0	65.7	66.4	66.7	66.3	67.0	58.2	57.5	58.8
Ages 75+	59.9	60.4	59.7	61.2	61.8	60.9	46.4	44.9	47.1
Ages <65	67.9	67.2	68.8	69.0	68.2	70.1	59.0	57.8	60.3
Ages 65+	62.9	63.3	62.6	63.8	64.3	63.4	52.8	52.6	53.0
Stage:									
All Stages	65.0	65.1	64.9	65.9	66.0	65.7	56.2	55.6	56.6
Localized	90.4	90.3	90.5	91.0	91.0	91.0	85.6	84.8	86.3
Regional	69.5	69.3	69.6	70.1	70.0	70.2	63.0	63.1	63.0
Distant	11.6	10.9	12.4	12.0	11.2	12.8	8.4	7.5	9.2
Unstaged	38.3	41.1	35.7	37.1	40.1	34.3	36.2	38.1	34.7

<sup>a</sup> Based on End Results data from a series of hospital registries and one population-based registry.

<sup>b</sup> Based on the SEER 9 areas (San Francisco, Connecticut, Detroit, Hawaii, Iowa, New Mexico, Seattle, Utah, Atlanta).

Based on follow-up of patients into 2007.

<sup>c</sup> Based on the SEER 17 areas (San Francisco, Connecticut, Detroit, Hawaii, Iowa, New Mexico, Seattle, Utah, Atlanta, San Jose-Monterey, Los Angeles, Alaska Native Registry, Rural Georgia, California excluding SF/SJM/LA, Kentucky, Louisiana and New Jersey). California excluding SF/SJM/LA, Kentucky, Louisiana, and New Jersey contribute cases for diagnosis years 2000-2006. The remaining 13 SEER Areas contribute cases for the entire period 1999-2006. Based on follow-up of patients into 2007.

<sup>d</sup> Period survival provides a more up-to-date estimate of survival by piecing together the most recent conditional survival estimates from several cohorts. It is computed here using three year calendar blocks (2004-2006: 0-1 year survival),

(2003-2005: 1-2 year survival), (2002-2004: 2-3 year survival), (2001-2003: 3-4 year survival), (2000-2002: 4-5 years survival).

<sup>e</sup> The difference between 1975-1977 and 1999-2006 is statistically significant ( $p < .05$ ).

<sup>f</sup> The standard error is between 5 and 10 percentage points.

<sup>g</sup> The standard error is greater than 10 percentage points.

- Statistic could not be calculated due to fewer than 25 cases during the time period.

Table 6.13  
Cancer of the Colon (Invasive)

5-Year Relative and Period Survival (Percent) by Race, Sex, Diagnosis Year, Stage and Age

	All Races			Whites			Blacks		
	Total	Males	Females	Total	Males	Females	Total	Males	Females
5-Year Relative Survival (Percent)									
Year of Diagnosis:									
1960-1963 <sup>a</sup>	-	-	-	43	42	44	34	32	35
1970-1973 <sup>a</sup>	-	-	-	49	47	50	37	36	38
1975-1977 <sup>b</sup>	51.7	51.0	52.3	51.9	51.3	52.4	46.6	45.6	47.0
1978-1980 <sup>b</sup>	53.3	52.3	54.2	53.5	52.4	54.4	49.5	48.0	50.5
1981-1983 <sup>b</sup>	56.3	56.8	55.9	56.6	57.3	55.9	49.7	46.0	52.3
1984-1986 <sup>b</sup>	59.2	59.6	58.8	59.9	60.3	59.5	50.0	49.7	50.3
1987-1989 <sup>b</sup>	61.3	61.8	60.8	61.8	62.5	61.1	53.2	51.5	54.5
1990-1992 <sup>b</sup>	63.0	63.3	62.7	63.8	64.1	63.5	54.1	55.8	52.8
1993-1995 <sup>b</sup>	61.0	60.9	61.0	61.6	61.5	61.7	52.4	51.8	52.7
1996-1998 <sup>b</sup>	63.3	63.5	63.2	64.1	64.2	64.0	54.7	56.0	53.6
1999-2006 <sup>b</sup>	65.8 <sup>e</sup>	66.2 <sup>e</sup>	65.4 <sup>e</sup>	67.2 <sup>e</sup>	67.8 <sup>e</sup>	66.6 <sup>e</sup>	55.4 <sup>e</sup>	54.4 <sup>e</sup>	56.2 <sup>e</sup>
5-Year Period Survival (Percent) <sup>cd</sup>									
Year of Diagnosis:									
1999-2006	65.3	65.6	65.0	66.1	66.6	65.7	57.0	56.3	57.6
Stage Distribution (%) 1999-2006 <sup>c</sup>									
All Stages									
Number of cases	153,409	73,833	79,576	124,827	60,539	64,288	16,597	7,414	9,183
Percent	100%	100%	100%	100%	100%	100%	100%	100%	100%
Localized	36	37	36	37	38	36	32	32	32
Regional	39	38	39	39	38	39	37	37	37
Distant	20	21	20	20	20	20	26	26	26
Unstaged	4	4	5	4	4	5	5	4	5
5-Year Relative Survival (Percent), 1999-2006 <sup>c</sup>									
Age at Diagnosis:									
Ages <45	66.0	66.1	66.0	67.9	66.6	69.2	59.1	61.7	56.7
Ages 45-54	66.5	65.7	67.3	67.7	67.2	68.4	57.1	54.9	59.1
Ages 55-64	66.1	65.9	66.4	67.3	67.0	67.6	57.6	57.8	57.4
Ages 65-74	65.8	65.7	65.8	66.5	66.5	66.5	58.2	57.7	58.7
Ages 75+	61.1	61.8	60.7	62.4	63.2	61.9	47.6	46.5	48.2
Ages <65	66.2	65.9	66.6	67.5	67.0	68.1	57.7	57.4	58.0
Ages 65+	63.3	63.9	62.8	64.3	65.0	63.8	53.3	53.2	53.3
Stage:									
All Stages	64.3	64.7	64.0	65.4	65.7	65.1	55.5	55.5	55.5
Localized	91.3	91.5	91.1	92.0	92.3	91.7	86.6	86.0	86.8
Regional	70.3	70.3	70.3	70.9	71.0	70.9	64.6	65.1	64.2
Distant	11.4	10.8	12.0	11.8	11.1	12.5	8.3	7.1	9.2
Unstaged	33.0	36.5	30.1	32.3	35.7	29.4	29.1	33.9	25.7

<sup>a</sup> Based on End Results data from a series of hospital registries and one population-based registry.  
<sup>b</sup> Based on the SEER 9 areas (San Francisco, Connecticut, Detroit, Hawaii, Iowa, New Mexico, Seattle, Utah, Atlanta).  
Based on follow-up of patients into 2007.  
<sup>c</sup> Based on the SEER 17 areas (San Francisco, Connecticut, Detroit, Hawaii, Iowa, New Mexico, Seattle, Utah, Atlanta, San Jose-Monterey, Los Angeles, Alaska Native Registry, Rural Georgia, California excluding SF/SJM/LA, Kentucky, Louisiana and New Jersey). California excluding SF/SJM/LA, Kentucky, Louisiana, and New Jersey contribute cases for diagnosis years 2000-2006. The remaining 13 SEER Areas contribute cases for the entire period 1999-2006. Based on follow-up of patients into 2007.  
<sup>d</sup> Period survival provides a more up-to-date estimate of survival by piecing together the most recent conditional survival estimates from several cohorts. It is computed here using three year calendar blocks (2004-2006: 0-1 year survival), (2003-2005: 1-2 year survival), (2002-2004: 2-3 year survival), (2001-2003: 3-4 year survival), (2000-2002: 4-5 years survival).  
<sup>e</sup> The difference between 1975-1977 and 1999-2006 is statistically significant (p<.05).  
<sup>f</sup> The standard error is between 5 and 10 percentage points.  
<sup>g</sup> The standard error is greater than 10 percentage points.  
- Statistic could not be calculated due to fewer than 25 cases during the time period.

Table 6.14  
Cancer of the Rectum (Invasive)

5-Year Relative and Period Survival (Percent) by Race, Sex, Diagnosis Year, Stage and Age

	All Races			Whites			Blacks		
	Total	Males	Females	Total	Males	Females	Total	Males	Females
5-Year Relative Survival (Percent)									
Year of Diagnosis:									
1960-1963 <sup>a</sup>	-	-	-	38	36	41	27	28	27
1970-1973 <sup>a</sup>	-	-	-	45	43	48	30	20	40
1975-1977 <sup>b</sup>	49.4	48.3	50.8	49.6	48.6	50.8	45.1	42.0	47.6
1978-1980 <sup>b</sup>	50.2	49.6	51.0	51.1	50.5	51.8	35.6	35.1	35.9
1981-1983 <sup>b</sup>	52.8	51.3	54.6	53.5	52.1	55.2	40.7	38.6	42.9
1984-1986 <sup>b</sup>	57.4	56.5	58.4	58.1	57.4	59.0	46.4	43.9	48.9
1987-1989 <sup>b</sup>	59.1	58.8	59.5	59.6	59.7	59.5	53.6	49.4	57.8
1990-1992 <sup>b</sup>	60.3	59.4	61.6	61.1	60.1	62.4	52.0	53.9	49.7
1993-1995 <sup>b</sup>	61.3	60.1	62.9	61.8	60.7	63.3	54.6	52.2	57.3
1996-1998 <sup>b</sup>	64.6	63.5	66.0	64.9	63.9	66.3	56.3	54.8	57.6
1999-2006 <sup>b</sup>	68.5 <sup>e</sup>	68.3 <sup>e</sup>	68.7 <sup>e</sup>	69.5 <sup>e</sup>	69.6 <sup>e</sup>	69.4 <sup>e</sup>	60.4 <sup>e</sup>	59.3 <sup>e</sup>	61.5 <sup>e</sup>
5-Year Period Survival (Percent) <sup>cd</sup>									
Year of Diagnosis:									
1999-2006	67.3	66.6	68.3	67.9	67.4	68.5	58.4	55.9	60.9
Stage Distribution (%) 1999-2006 <sup>c</sup>									
All Stages									
Number of cases	62,923	35,489	27,434	51,139	29,047	22,092	5,392	2,731	2,661
Percent	100%	100%	100%	100%	100%	100%	100%	100%	100%
Localized	44	44	45	44	44	44	42	40	44
Regional	33	34	32	34	34	33	30	31	28
Distant	17	17	16	17	17	16	20	22	18
Unstaged	6	5	7	6	5	6	8	8	9
5-Year Relative Survival (Percent), 1999-2006 <sup>c</sup>									
Age at Diagnosis:									
Ages <45	68.8	65.5	72.9	70.1	67.7	73.0	58.7	50.6	68.9
Ages 45-54	72.7	71.1	75.1	73.4	71.9	75.8	63.4	60.0	66.8
Ages 55-64	70.1	69.1	71.9	70.7	69.7	72.5	62.9	60.2	65.8
Ages 65-74	66.7	65.5	68.4	67.1	66.0	68.7	58.0	56.9	59.1
Ages 75+	55.9	56.2	55.8	57.2	57.7	56.8	40.5	37.9	41.2
Ages <65	70.9	69.3	73.3	71.6	70.2	73.8	62.3	58.6	66.7
Ages 65+	61.8	61.8	61.8	62.5	62.7	62.3	50.9	50.5	51.0
Stage:									
All Stages	66.5	65.9	67.2	67.1	66.7	67.5	58.1	55.9	60.3
Localized	88.6	88.3	89.1	89.1	88.8	89.5	83.4	82.2	84.6
Regional	67.1	67.1	67.1	67.8	67.8	67.9	57.0	56.6	57.2
Distant	12.3	11.1	14.0	12.5	11.5	14.0	9.1	9.0	9.2
Unstaged	47.1	47.7	46.3	45.3	46.5	43.8	48.2	44.1	51.0

<sup>a</sup> Based on End Results data from a series of hospital registries and one population-based registry.<sup>b</sup> Based on the SEER 9 areas (San Francisco, Connecticut, Detroit, Hawaii, Iowa, New Mexico, Seattle, Utah, Atlanta).

Based on follow-up of patients into 2007.

<sup>c</sup> Based on the SEER 17 areas (San Francisco, Connecticut, Detroit, Hawaii, Iowa, New Mexico, Seattle, Utah, Atlanta, San Jose-Monterey, Los Angeles, Alaska Native Registry, Rural Georgia, California excluding SF/SJM/LA, Kentucky, Louisiana and New Jersey). California excluding SF/SJM/LA, Kentucky, Louisiana, and New Jersey contribute cases for diagnosis years 2000-2006. The remaining 13 SEER Areas contribute cases for the entire period 1999-2006. Based on follow-up of patients into 2007.<sup>d</sup> Period survival provides a more up-to-date estimate of survival by piecing together the most recent conditional survival estimates from several cohorts. It is computed here using three year calendar blocks (2004-2006: 0-1 year survival),

(2003-2005: 1-2 year survival), (2002-2004: 2-3 year survival), (2001-2003: 3-4 year survival), (2000-2002: 4-5 years survival).

<sup>e</sup> The difference between 1975-1977 and 1999-2006 is statistically significant (p<.05).<sup>f</sup> The standard error is between 5 and 10 percentage points.<sup>g</sup> The standard error is greater than 10 percentage points.

- Statistic could not be calculated due to fewer than 25 cases during the time period.

Table 6.15  
Cancer of the Colon and Rectum (Invasive)

SEER<sup>a</sup> Relative Survival (Percent)  
By Year of Diagnosis

All Races, Males and Females

Survival Time	Year of Diagnosis																			
	1975- 1979	1980- 1984	1985- 1989	1990	1991	1992	1993	1994	1995	1996	1997	1998	1999	2000	2001	2002	2003	2004	2005	2006
1-year	74.9	78.0	80.8	81.9	82.5	81.8	80.8	81.7	80.2	82.0	81.1	82.7	82.9	82.7	83.7	83.9	83.1	84.2	84.4	84.2
2-year	64.0	67.8	71.9	73.5	74.0	73.3	72.7	73.0	72.1	74.2	73.3	75.5	75.3	75.3	76.6	77.7	76.6	77.5	77.4	
3-year	57.8	61.4	66.6	68.4	68.4	67.8	67.7	68.2	66.6	69.5	68.3	70.4	70.9	71.2	72.1	73.0	71.8	72.7		
4-year	54.0	57.5	62.8	64.2	64.9	64.2	63.8	64.2	62.9	65.9	65.4	67.5	68.0	68.0	69.3	69.9	68.8			
5-year	51.6	54.9	60.3	61.9	62.6	62.1	61.1	61.3	60.8	63.7	62.7	64.7	65.8	66.0	67.2	67.3				
6-year	49.8	53.0	58.6	60.6	60.7	60.6	59.6	59.7	58.4	62.4	61.0	63.1	64.5	64.2	65.3					
7-year	48.7	51.6	57.2	59.0	59.2	59.0	58.0	58.4	56.9	61.5	60.1	61.9	63.5	62.9						
8-year	47.8	50.7	56.2	57.6	58.0	57.6	57.0	57.6	56.4	60.8	59.3	61.4	62.3							
9-year	47.3	50.0	55.4	57.0	57.0	56.8	56.1	57.2	56.2	60.1	58.5	60.3								
10-year	46.7	49.4	54.7	56.5	56.4	56.2	55.6	56.2	55.7	59.4	57.9									
11-year	46.3	48.8	54.3	56.0	56.2	55.5	54.7	55.9	55.0	58.8										
12-year	45.9	48.5	53.9	55.7	56.1	55.5	53.9	55.2	54.4											
13-year	45.7	48.3	53.3	55.4	55.7	54.8	53.5	55.1												
14-year	45.2	47.9	53.1	54.9	55.3	54.4	53.1													
15-year	45.0	47.7	52.6	54.4	55.1	54.4														
16-year	44.7	47.3	52.5	54.3	55.1															
17-year	44.4	46.9	52.0	54.3																
18-year	44.1	46.7	51.8																	
19-year	44.1	46.4																		
20-year	44.1	46.3																		

<sup>a</sup> Based on the SEER 9 areas (San Francisco, Connecticut, Detroit, Hawaii, Iowa, New Mexico, Seattle, Utah, and Atlanta).

Table 6.16  
Cancer of the Colon and Rectum (Invasive)

SEER<sup>a</sup> Relative Survival (Percent)  
By Year of Diagnosis

All Races, Males

Year of Diagnosis

	1975- 1979	1980- 1984	1985- 1989	1990	1991	1992	1993	1994	1995	1996	1997	1998	1999	2000	2001	2002	2003	2004	2005	2006
Survival Time																				
1-year	74.9	78.9	81.8	83.1	83.3	82.8	81.5	82.6	81.7	83.3	82.0	82.8	84.0	84.3	85.6	83.8	83.8	85.1	85.1	85.3
2-year	64.0	68.1	73.2	74.4	74.9	74.1	73.2	73.8	73.3	75.7	74.5	75.4	75.9	77.1	78.1	77.3	77.0	78.8	78.3	
3-year	57.2	61.5	67.6	69.6	69.2	68.4	68.1	69.0	67.5	70.6	69.0	69.7	71.4	72.9	73.5	72.8	72.1	73.7		
4-year	53.1	57.2	63.3	64.9	65.2	64.2	63.6	64.1	63.7	66.2	66.2	66.4	68.3	69.9	70.6	69.7	68.9			
5-year	50.5	54.3	60.6	62.0	62.4	61.7	60.6	60.7	60.7	63.5	63.3	63.6	65.8	67.2	68.0	66.8				
6-year	48.4	52.3	58.8	60.4	59.8	60.2	59.2	58.9	58.0	62.1	61.4	61.7	64.7	65.0	65.7					
7-year	47.1	50.7	57.2	58.4	58.0	58.7	57.5	57.6	56.4	61.0	60.7	60.4	63.6	63.2						
8-year	46.2	49.7	56.3	57.1	56.7	56.9	56.7	56.1	55.9	60.6	59.4	59.4	62.4							
9-year	45.5	48.9	55.3	56.7	55.8	56.0	55.2	55.6	55.5	60.3	58.4	58.5								
10-year	44.8	48.1	54.7	56.3	55.2	55.4	54.3	54.4	55.0	59.4	57.9									
11-year	44.4	47.5	54.3	55.9	55.2	54.8	53.0	54.4	54.1	58.7										
12-year	43.9	47.1	53.8	55.6	55.2	54.8	52.7	53.5	53.3											
13-year	43.5	46.9	53.2	55.3	55.0	53.9	51.6	53.2												
14-year	43.0	46.4	53.1	54.8	54.0	53.3	51.4													
15-year	42.8	46.3	52.5	54.4	53.6	53.2														
16-year	42.4	46.3	52.4	54.4	53.6															
17-year	42.1	45.7	51.9	54.4																
18-year	41.9	45.5	51.6																	
19-year	41.9	45.3																		
20-year	41.8	45.0																		

<sup>a</sup> Based on the SEER 9 areas (San Francisco, Connecticut, Detroit, Hawaii, Iowa, New Mexico, Seattle, Utah, and Atlanta).



Table 6.17  
Cancer of the Colon and Rectum (Invasive)

SEER<sup>a</sup> Relative Survival (Percent)  
By Year of Diagnosis

All Races, Females

Year of Diagnosis

	1975- 1979	1980- 1984	1985- 1989	1990	1991	1992	1993	1994	1995	1996	1997	1998	1999	2000	2001	2002	2003	2004	2005	2006
Survival Time																				
1-year	74.9	77.2	79.8	80.7	81.8	80.7	80.2	80.7	78.8	80.7	80.2	82.7	81.8	80.9	81.8	84.1	82.4	83.2	83.6	83.1
2-year	64.0	67.4	70.7	72.6	73.0	72.5	72.2	72.3	70.9	72.6	72.1	75.5	74.7	73.4	74.9	78.1	76.3	76.2	76.4	
3-year	58.4	61.3	65.5	67.2	67.6	67.3	67.3	67.3	65.7	68.3	67.4	71.2	70.5	69.5	70.5	73.2	71.5	71.6		
4-year	54.9	57.7	62.3	63.5	64.7	64.3	63.9	64.2	62.1	65.7	64.5	68.6	67.6	66.0	67.9	70.2	68.6			
5-year	52.6	55.4	60.0	61.9	62.8	62.5	61.6	61.9	60.9	63.9	62.0	65.7	65.7	64.8	66.3	67.9				
6-year	51.1	53.7	58.5	60.8	61.5	61.1	60.0	60.6	58.9	62.8	60.6	64.5	64.2	63.5	64.8					
7-year	50.1	52.5	57.1	59.6	60.5	59.4	58.4	59.2	57.3	61.9	59.4	63.3	63.4	62.5						
8-year	49.4	51.7	56.1	58.2	59.4	58.2	57.4	58.9	56.9	60.7	59.2	63.1	62.2							
9-year	48.9	51.1	55.4	57.3	58.1	57.7	57.1	58.9	56.7	59.8	58.6	62.1								
10-year	48.4	50.5	54.7	56.7	57.5	56.9	56.9	57.9	56.5	59.3	57.8									
11-year	47.9	50.1	54.3	56.1	57.0	56.3	56.5	57.4	55.8	58.9										
12-year	47.7	49.7	54.1	55.9	56.9	56.1	55.1	57.0	55.5											
13-year	47.5	49.5	53.4	55.4	56.5	55.5	55.1	57.0												
14-year	47.1	49.2	53.2	55.0	56.4	55.4	54.9													
15-year	46.8	48.9	52.8	54.4	56.4	55.4														
16-year	46.5	48.2	52.6	54.2	56.4															
17-year	46.3	48.0	52.0	53.7																
18-year	45.9	47.8	51.8																	
19-year	45.9	47.4																		
20-year	45.9	47.3																		

<sup>a</sup> Based on the SEER 9 areas (San Francisco, Connecticut, Detroit, Hawaii, Iowa, New Mexico, Seattle, Utah, and Atlanta).

Table 6.18  
Cancer of the Colon and Rectum (Invasive)

Risk of Being Diagnosed With Cancer in 10, 20 and 30 Years,  
Lifetime Risk of Being Diagnosed with Cancer Given Alive and Cancer-Free at Current Age, and  
Lifetime Risk of Dying from Cancer Given Alive at Current Age  
Both Sexes, 2005-2007 By Race/Ethnicity

Race/ Ethnicity	Current Age	Risk of Being Diagnosed with Cancer				Risk of Dying from Cancer	Race/ Ethnicity	Current Age	Risk of Being Diagnosed with Cancer				Risk of Dying from Cancer
		+10 yrs	+20 yrs	+30 yrs	Ever				+10 yrs	+20 yrs	+30 yrs	Ever	
All Races	0	0.00	0.00	0.02	5.12	2.08	Asian/ Pacific Islander	0	0.00	0.00	0.02	5.22	2.04
	10	0.00	0.02	0.08	5.18	2.11		10	0.00	0.02	0.08	5.26	2.05
	20	0.02	0.08	0.29	5.20	2.12		20	0.02	0.08	0.29	5.27	2.06
	30	0.06	0.28	0.87	5.24	2.13		30	0.06	0.28	0.84	5.28	2.06
	40	0.22	0.82	1.95	5.24	2.15		40	0.22	0.78	1.80	5.26	2.06
	50	0.61	1.78	3.43	5.17	2.15		50	0.57	1.61	3.09	5.12	2.05
	60	1.24	3.01	4.43	4.86	2.11		60	1.08	2.62	4.03	4.72	1.99
	70	2.03	3.67	-	4.16	1.96		70	1.68	3.22	-	3.97	1.86
80	2.30	-	-	3.00	1.68	80	1.91	-	-	2.84	1.63		
White	0	0.00	0.00	0.02	5.09	2.05	American Indian/ Alaska Native <sup>a</sup>	0	0.00	0.00	0.02	4.15	1.59
	10	0.00	0.02	0.08	5.14	2.07		10	0.00	0.02	0.11	4.21	1.62
	20	0.02	0.08	0.28	5.16	2.08		20	0.02	0.11	0.32	4.25	1.63
	30	0.06	0.27	0.83	5.19	2.10		30	0.09	0.30	0.80	4.30	1.66
	40	0.21	0.78	1.89	5.19	2.11		40	0.21	0.72	1.73	4.32	1.69
	50	0.58	1.73	3.38	5.12	2.11		50	0.53	1.58	3.04	4.29	1.71
	60	1.22	2.98	4.41	4.83	2.07		60	1.14	2.71	3.76	4.06	1.68
	70	2.03	3.67	-	4.15	1.93		70	1.85	3.07	-	3.43	1.52
80	2.32	-	-	2.99	1.66	80	1.71	-	-	2.21	1.12		
Black	0	0.00	0.00	0.02	5.05	2.38	Hispanic <sup>b</sup>	0	0.00	0.00	0.01	4.61	1.91
	10	0.00	0.02	0.08	5.17	2.44		10	0.00	0.01	0.06	4.66	1.93
	20	0.01	0.08	0.35	5.20	2.46		20	0.01	0.06	0.23	4.68	1.94
	30	0.07	0.34	1.11	5.27	2.49		30	0.05	0.22	0.73	4.71	1.95
	40	0.28	1.07	2.41	5.32	2.52		40	0.17	0.69	1.67	4.71	1.96
	50	0.83	2.24	3.88	5.30	2.55		50	0.53	1.53	2.89	4.64	1.96
	60	1.58	3.41	4.64	5.01	2.52		60	1.06	2.48	3.71	4.33	1.92
	70	2.29	3.82	-	4.28	2.35		70	1.60	2.97	-	3.67	1.80
80	2.39	-	-	3.11	2.05	80	1.80	-	-	2.71	1.55		

Devcan Version 6.5.0, June 2010, National Cancer Institute (<http://srab.cancer.gov/devcan/>).

Source: Incidence data are from the SEER 17 areas (San Francisco, Connecticut, Detroit, Hawaii, Iowa, New Mexico, Seattle, Utah, Atlanta, San Jose-Monterey, Los Angeles, Alaska Native Registry, Rural Georgia, California excluding SF/SJM/LA, Kentucky, Louisiana and New Jersey). Mortality data are from the NCHS public use data file for the total US.

<sup>a</sup> Underlying incidence and mortality data for American Indian/Alaska Native are based on the CHSDA (Contract Health Service Delivery Area) counties.

<sup>b</sup> Hispanic is not mutually exclusive from whites, blacks, Asian/Pacific Islanders, and American Indians/Alaska Natives.

Underlying incidence data for Hispanics are based on NHIA and exclude cases from the Alaska Native Registry.

Underlying mortality data for Hispanics exclude deaths from the District of Columbia, Minnesota, New Hampshire and North Dakota.

- Statistic could not be calculated.

A percent of 0.00 represents a value that is below 0.005.

Table 6.19  
Cancer of the Colon and Rectum (Invasive)

Risk of Being Diagnosed With Cancer in 10, 20 and 30 Years,  
Lifetime Risk of Being Diagnosed with Cancer Given Alive and Cancer-Free at Current Age, and  
Lifetime Risk of Dying from Cancer Given Alive at Current Age  
Males, 2005-2007 By Race/Ethnicity

Race/ Ethnicity	Current Age	Risk of Being Diagnosed with Cancer				Risk of Dying from Cancer	Race/ Ethnicity	Current Age	Risk of Being Diagnosed with Cancer				Risk of Dying from Cancer
		+10 yrs	+20 yrs	+30 yrs	Ever				+10 yrs	+20 yrs	+30 yrs	Ever	
All Races	0	0.00	0.00	0.02	5.30	2.17	Asian/ Pacific Islander	0	0.00	0.00	0.02	5.41	2.06
	10	0.00	0.02	0.08	5.37	2.20		10	0.00	0.02	0.08	5.46	2.08
	20	0.01	0.08	0.31	5.40	2.21		20	0.02	0.08	0.32	5.48	2.09
	30	0.06	0.30	0.96	5.46	2.24		30	0.06	0.31	0.93	5.50	2.09
	40	0.24	0.91	2.21	5.49	2.26		40	0.25	0.88	2.06	5.48	2.10
	50	0.70	2.04	3.86	5.44	2.28		50	0.64	1.85	3.49	5.34	2.09
	60	1.46	3.43	4.79	5.14	2.25		60	1.26	2.99	4.39	4.92	2.03
	70	2.34	3.96	-	4.38	2.09		70	1.93	3.48	-	4.08	1.87
80	2.45	-	-	3.07	1.77	80	2.03	-	-	2.81	1.60		
White	0	0.00	0.00	0.02	5.30	2.14	American Indian/ Alaska Native <sup>a</sup>	0	0.00	0.00	0.03	3.78	1.77
	10	0.00	0.02	0.08	5.36	2.17		10	0.00	0.03	0.13	3.84	1.80
	20	0.01	0.08	0.30	5.39	2.18		20	0.03	0.13	0.37	3.88	1.82
	30	0.06	0.29	0.93	5.44	2.21		30	0.10	0.35	0.95	3.95	1.87
	40	0.23	0.88	2.16	5.46	2.23		40	0.26	0.88	1.95	3.99	1.93
	50	0.67	2.00	3.84	5.42	2.24		50	0.66	1.79	3.11	3.95	1.98
	60	1.43	3.42	4.79	5.13	2.21		60	1.25	2.70	3.53	3.64	1.95
	70	2.35	3.98	-	4.38	2.05		70	1.75	2.75	-	2.88	1.76
80	2.47	-	-	3.07	1.74	80	1.47	-	-	1.66	1.52		
Black	0	0.00	0.00	0.01	4.91	2.44	Hispanic <sup>b</sup>	0	0.00	0.00	0.01	4.96	2.02
	10	0.00	0.01	0.08	5.04	2.51		10	0.00	0.01	0.06	5.02	2.04
	20	0.01	0.08	0.35	5.08	2.53		20	0.01	0.06	0.23	5.04	2.06
	30	0.07	0.35	1.17	5.19	2.58		30	0.05	0.22	0.79	5.10	2.08
	40	0.29	1.14	2.61	5.29	2.64		40	0.18	0.75	1.92	5.12	2.10
	50	0.91	2.46	4.11	5.32	2.69		50	0.59	1.80	3.40	5.09	2.11
	60	1.80	3.70	4.80	5.10	2.71		60	1.29	3.01	4.28	4.81	2.08
	70	2.53	3.99	-	4.39	2.56		70	1.98	3.44	-	4.06	1.94
80	2.56	-	-	3.26	2.28	80	2.03	-	-	2.89	1.66		

Devcan Version 6.5.0, June 2010, National Cancer Institute (<http://srab.cancer.gov/devcan/>).

Source: Incidence data are from the SEER 17 areas (San Francisco, Connecticut, Detroit, Hawaii, Iowa, New Mexico, Seattle, Utah, Atlanta, San Jose-Monterey, Los Angeles, Alaska Native Registry, Rural Georgia, California excluding SF/SJM/LA, Kentucky, Louisiana and New Jersey). Mortality data are from the NCHS public use data file for the total US.

<sup>a</sup> Underlying incidence and mortality data for American Indian/Alaska Native are based on the CHSDA (Contract Health Service Delivery Area) counties.

<sup>b</sup> Hispanic is not mutually exclusive from whites, blacks, Asian/Pacific Islanders, and American Indians/Alaska Natives.

Underlying incidence data for Hispanics are based on NHIA and exclude cases from the Alaska Native Registry.

Underlying mortality data for Hispanics exclude deaths from the District of Columbia, Minnesota, New Hampshire and North Dakota.

- Statistic could not be calculated.

A percent of 0.00 represents a value that is below 0.005.

Table 6.20  
Cancer of the Colon and Rectum (Invasive)

Risk of Being Diagnosed With Cancer in 10, 20 and 30 Years,  
Lifetime Risk of Being Diagnosed with Cancer Given Alive and Cancer-Free at Current Age, and  
Lifetime Risk of Dying from Cancer Given Alive at Current Age  
Females, 2005-2007 By Race/Ethnicity

Race/ Ethnicity	Current Age	Risk of Being Diagnosed with Cancer				Risk of Dying from Cancer	Race/ Ethnicity	Current Age	Risk of Being Diagnosed with Cancer				Risk of Dying from Cancer
		+10 yrs	+20 yrs	+30 yrs	Ever				+10 yrs	+20 yrs	+30 yrs	Ever	
All Races	0	0.00	0.00	0.02	4.97	2.01	Asian/ Pacific Islander	0	0.00	0.00	0.02	5.05	2.01
	10	0.00	0.02	0.08	5.02	2.03		10	0.00	0.02	0.08	5.09	2.03
	20	0.02	0.08	0.28	5.03	2.04		20	0.01	0.07	0.26	5.10	2.03
	30	0.06	0.27	0.78	5.04	2.05		30	0.06	0.24	0.75	5.10	2.03
	40	0.21	0.72	1.70	5.02	2.05		40	0.19	0.69	1.57	5.06	2.03
	50	0.53	1.53	3.04	4.92	2.04		50	0.51	1.40	2.75	4.94	2.01
	60	1.05	2.64	4.12	4.61	1.99		60	0.92	2.31	3.74	4.55	1.96
	70	1.78	3.44	-	4.00	1.87		70	1.49	3.02	-	3.89	1.85
80	2.20	-	-	2.95	1.63	80	1.83	-	-	2.86	1.65		
White	0	0.00	0.00	0.02	4.90	1.97	American Indian/ Alaska Native <sup>a</sup>	0	0.00	0.00	0.02	4.47	1.47
	10	0.00	0.02	0.08	4.94	2.00		10	0.00	0.02	0.10	4.52	1.49
	20	0.02	0.08	0.27	4.95	2.00		20	0.02	0.10	0.27	4.54	1.50
	30	0.06	0.26	0.73	4.96	2.01		30	0.08	0.25	0.65	4.56	1.51
	40	0.20	0.68	1.63	4.94	2.01		40	0.18	0.57	1.52	4.56	1.52
	50	0.49	1.46	2.97	4.84	2.00		50	0.41	1.39	2.98	4.53	1.51
	60	1.02	2.59	4.07	4.56	1.95		60	1.03	2.72	3.92	4.36	1.48
	70	1.76	3.42	-	3.96	1.84		70	1.94	3.31	-	3.81	1.38
80	2.21	-	-	2.94	1.61	80	1.85	-	-	2.53	0.90		
Black	0	0.00	0.00	0.02	5.19	2.34	Hispanic <sup>b</sup>	0	0.00	0.00	0.01	4.32	1.82
	10	0.00	0.02	0.09	5.30	2.40		10	0.00	0.01	0.06	4.36	1.84
	20	0.01	0.09	0.35	5.32	2.40		20	0.01	0.06	0.22	4.37	1.85
	30	0.07	0.34	1.07	5.35	2.42		30	0.05	0.21	0.67	4.38	1.85
	40	0.27	1.01	2.24	5.36	2.44		40	0.17	0.63	1.44	4.36	1.85
	50	0.77	2.05	3.68	5.29	2.44		50	0.47	1.29	2.43	4.25	1.84
	60	1.40	3.18	4.50	4.94	2.39		60	0.86	2.04	3.25	3.94	1.79
	70	2.12	3.69	-	4.21	2.22		70	1.30	2.61	-	3.36	1.70
80	2.29	-	-	3.05	1.93	80	1.64	-	-	2.58	1.48		

Devcan Version 6.5.0, June 2010, National Cancer Institute (<http://srab.cancer.gov/devcan/>).

Source: Incidence data are from the SEER 17 areas (San Francisco, Connecticut, Detroit, Hawaii, Iowa, New Mexico, Seattle, Utah, Atlanta, San Jose-Monterey, Los Angeles, Alaska Native Registry, Rural Georgia, California excluding SF/SJM/LA, Kentucky, Louisiana and New Jersey). Mortality data are from the NCHS public use data file for the total US.

<sup>a</sup> Underlying incidence and mortality data for American Indian/Alaska Native are based on the CHSDA (Contract Health Service Delivery Area) counties.

<sup>b</sup> Hispanic is not mutually exclusive from whites, blacks, Asian/Pacific Islanders, and American Indians/Alaska Natives.

Underlying incidence data for Hispanics are based on NHIA and exclude cases from the Alaska Native Registry.

Underlying mortality data for Hispanics exclude deaths from the District of Columbia, Minnesota, New Hampshire and North Dakota.

- Statistic could not be calculated.

A percent of 0.00 represents a value that is below 0.005.

Table 6.21  
Cancer of the Colon and Rectum (Invasive)

SEER Incidence and U.S. Mortality  
Age-Adjusted Rates and Trends<sup>a</sup>  
By Race/Ethnicity and Sex

SEER Incidence	SEER 17 Areas <sup>b</sup>			SEER 13 Areas <sup>b</sup>			SEER 9 Areas <sup>b</sup>		
	Rate 2003-2007			Trend 1998-2007 <sup>c</sup>			Trend 1998-2007 <sup>d</sup>		
	Rate per 100,000 persons			AAPC (%)			AAPC (%)		
RACE/ETHNICITY	Total	Males	Females	Total	Males	Females	Total	Males	Females
All Races	47.9	55.8	41.7	-2.6*	-3.0*	-2.3*	-2.7*	-3.2*	-2.3*
White	47.4	55.4	40.9	-2.8*	-3.2*	-2.5*	-2.8*	-3.3*	-2.6*
White Hispanic <sup>e</sup>	37.9	45.5	32.0	-1.4*	-2.1*	-0.5*	-	-	-
White Non-Hispanic <sup>e</sup>	48.7	56.7	42.1	-2.8*	-3.2*	-2.6*	-	-	-
Black	58.9	68.1	52.6	-1.6*	-2.2*	-1.3*	-1.7*	-2.4*	-1.4*
Asian/Pacific Islander	39.2	45.5	34.2	-2.0*	-2.3*	-0.9*	-	-	-
Amer Ind/Alaska Nat <sup>f</sup>	42.1	43.4	40.4	-0.3	-0.9	0.2	-	-	-
Hispanic <sup>e</sup>	37.3	44.5	31.6	-1.4*	-2.3*	-0.4*	-	-	-
<u>U.S. Mortality<sup>g</sup></u>									
	Rate 2003-2007			Trend 1998-2007 <sup>h</sup>					
	Rate per 100,000 persons			AAPC (%)					
RACE/ETHNICITY	Total	Males	Females	Total	Males	Females			
All Races	17.6	21.2	14.9	-2.6*	-2.8*	-2.6*			
White	17.1	20.6	14.4	-2.7*	-2.9*	-2.6*			
White Hispanic <sup>e</sup>	13.1	16.1	10.8	-1.8*	-2.5*	-1.6*			
White Non-Hispanic <sup>e</sup>	17.4	20.9	14.6	-2.5*	-2.8*	-2.4*			
Black	24.7	30.5	21.0	-2.2*	-1.9*	-2.5*			
Asian/Pacific Islander	11.3	13.2	9.9	-2.2*	-2.4*	-1.8*			
Amer Ind/Alaska Nat									
Total U.S.	11.9	14.7	9.8	-3.0*	-3.2*	-1.8*			
CHSDA Counties	15.5	19.2	12.9	-2.2*	-2.0	-1.1			
Non-CHSDA Counties	7.4	9.3	5.9	-2.3*	-4.7	-2.6*			
Hispanic <sup>e</sup>	12.7	15.6	10.5	-1.9*	-2.6*	-0.9*			

The AAPC is the Average Annual Percent Change over the time interval. The AAPCs are calculated by the Joinpoint Regression Program Version 3.4.3, April 2010, National Cancer Institute.

- Statistic not shown. Rate based on less than 16 cases for the time interval.

Trend based on less than 10 cases for at least one year within the time interval.

a Rates are age-adjusted to the 2000 US Std Population (19 age groups - Census P25-1130). Trends

are based on rates age-adjusted to the 2000 US Std Population (19 age groups - Census P25-1130).

b The SEER 9 areas are San Francisco, Connecticut, Detroit, Hawaii, Iowa, New Mexico, Seattle, Utah and Atlanta.

The SEER 13 areas comprise the SEER 9 areas plus San Jose-Monterey, Los Angeles, the Alaska Native Registry and Rural Georgia.

The SEER 17 areas comprise the SEER 13 areas plus California excluding SF/SJM/LA, Kentucky, Louisiana and New Jersey.

c The 1998-2007 AAPC estimates are based on a Joinpoint analysis with up to 2 Joinpoints over diagnosis years 1992-2007.

d The 1998-2007 AAPC estimates are based on a Joinpoint analysis with up to 4 Joinpoints over diagnosis years 1975-2007.

e Hispanic and Non-Hispanic are not mutually exclusive from whites, blacks, Asian/Pacific Islanders, and American Indians/Alaska Natives. Incidence data for Hispanics and Non-Hispanics are based on NHIA and exclude cases from the Alaska Native Registry. The 2003-2007 Hispanic and Non-Hispanic death rates exclude deaths from the District of Columbia, New Hampshire, and North Dakota. The 1998-2007 Hispanic and Non-Hispanic mortality trends exclude deaths from Connecticut, the District of Columbia, Maine, Maryland, Minnesota, New Hampshire, New York, North Dakota, Oklahoma and Vermont.

f Incidence data for American Indian/Alaska Native are based on the CHSDA(Contract Health Service Delivery Area) counties.

g US Mortality Files, National Center for Health Statistics, CDC.

h The 1998-2007 mortality AAPCs are based on a Joinpoint analysis using years of death 1992-2007.

\* The APC is significantly different from zero (p<.05).

Table 6.22  
Cancer of the Colon (Invasive) and Cancer of the Rectum (Invasive)

SEER Incidence  
Age-Adjusted Rates and Trends<sup>a</sup>  
By Race/Ethnicity and Sex

Cancer of the Colon <u>SEER Incidence</u>	SEER 17 Areas <sup>b</sup> Rate 2003-2007 Rate per 100,000 persons			SEER 13 Areas <sup>b</sup> Trend 1998-2007 <sup>c</sup> AAPC (%)			SEER 9 Areas <sup>b</sup> Trend 1998-2007 <sup>d</sup> AAPC (%)		
	Total	Males	Females	Total	Males	Females	Total	Males	Females
	RACE/ETHNICITY								
All Races	34.5	38.9	31.2	-2.4*	-2.8*	-2.0*	-2.7*	-3.0*	-2.1*
White	34.1	38.6	30.6	-2.8*	-3.3*	-2.1*	-2.8*	-3.4*	-2.2*
White Hispanic <sup>e</sup>	26.5	30.4	23.4	-1.1*	-1.9*	-0.3	-	-	-
White Non-Hispanic <sup>e</sup>	35.1	39.7	31.5	-2.8*	-3.3*	-2.2*	-	-	-
Black	44.9	50.8	41.0	-1.9*	-2.6*	-1.5*	-2.0*	-2.8*	-1.7*
Asian/Pacific Islander	26.2	28.8	24.3	-2.3*	-3.0*	-1.0*	-	-	-
Amer Ind/Alaska Nat <sup>f</sup>	31.0	29.5	31.8	-0.5	-1.8	0.6	-	-	-
Hispanic <sup>e</sup>	26.0	29.7	23.2	-1.1*	-1.9*	-0.2	-	-	-
Cancer of the Rectum <u>SEER Incidence</u>	SEER 17 Areas <sup>b</sup> Rate 2003-2007 Rate per 100,000 persons			SEER 13 Areas <sup>b</sup> Trend 1998-2007 <sup>c</sup> AAPC (%)			SEER 9 Areas <sup>b</sup> Trend 1998-2007 <sup>d</sup> AAPC (%)		
	Total	Males	Females	Total	Males	Females	Total	Males	Females
	RACE/ETHNICITY								
All Races	13.4	16.9	10.6	-2.6*	-2.5*	-2.5*	-2.6*	-2.8*	-2.4*
White	13.3	16.8	10.4	-3.0*	-2.9*	-3.0*	-2.9*	-3.0*	-2.9*
White Hispanic <sup>e</sup>	11.5	15.1	8.5	-1.3*	-1.7*	-1.0*	-	-	-
White Non-Hispanic <sup>e</sup>	13.6	17.1	10.7	-3.0*	-3.2*	-3.0*	-	-	-
Black	14.0	17.2	11.6	-0.4	-0.7	-0.1	-0.2	-0.1	-0.2
Asian/Pacific Islander	12.9	16.7	9.9	-1.0*	-0.9	-1.1	-	-	-
Amer Ind/Alaska Nat <sup>f</sup>	11.1	13.9	8.7	-0.1	-	-	-	-	-
Hispanic <sup>e</sup>	11.3	14.8	8.5	-1.2*	-1.6*	-0.9	-	-	-

The AAPC is the Average Annual Percent Change over the time interval. The AAPCs are calculated by the Joinpoint Regression Program Version 3.4.3, April 2010, National Cancer Institute.

- Statistic not shown. Rate based on less than 16 cases for the time interval.

Trend based on less than 10 cases for at least one year within the time interval.

a Rates are age-adjusted to the 2000 US Std Population (19 age groups - Census P25-1130). Trends are based on rates age-adjusted to the 2000 US Std Population (19 age groups - Census P25-1130).

b The SEER 9 areas are San Francisco, Connecticut, Detroit, Hawaii, Iowa, New Mexico, Seattle, Utah and Atlanta.

The SEER 13 areas comprise the SEER 9 areas plus San Jose-Monterey, Los Angeles, the Alaska Native Registry and Rural Georgia.

The SEER 17 areas comprise the SEER 13 areas plus California excluding SF/SJM/LA, Kentucky, Louisiana and New Jersey.

c The 1998-2007 AAPC estimates are based on a Joinpoint analysis with up to 2 Joinpoints over diagnosis years 1992-2007.

d The 1998-2007 AAPC estimates are based on a Joinpoint analysis with up to 4 Joinpoints over diagnosis years 1975-2007.

e Hispanic and Non-Hispanic are not mutually exclusive from whites, blacks, Asian/Pacific Islanders, and American Indians/Alaska Natives. Incidence data for Hispanics and Non-Hispanics are based on NHIA and exclude cases from the Alaska Native Registry.

f Incidence data for American Indian/Alaska Native are based on the CHSDA (Contract Health Service Delivery Area) counties.

\* The APC is significantly different from zero (p<.05).

Table 6.23  
Cancer of the Colon and Rectum (Invasive)

Age-Adjusted SEER Incidence Rates<sup>a</sup>  
By Registry, Race and Sex

	All Races			Whites			Blacks		
	Total	Males	Females	Total	Males	Females	Total	Males	Females
<u>SEER Incidence Rates<sup>a</sup>, 2003-2007</u>									
Atlanta & Rural Georgia	43.09	49.77	38.46	39.00	46.39	33.50	54.37	61.65	50.05
Atlanta	42.68	48.61	38.65	38.60	45.30	33.62	54.35	60.92	50.71
Rural Georgia	51.18	70.71	35.87	45.57	62.55	32.33	61.57	86.66	42.75
California	44.38	51.38	38.76	44.00	51.15	38.18	56.40	63.01	51.24
Greater Bay Area	43.68	49.52	39.01	43.47	49.42	38.68	54.17	59.82	50.00
San Francisco-Oakland	44.78	51.10	39.71	44.39	50.96	39.06	54.49	60.59	49.87
San Jose-Monterey	41.42	46.39	37.48	41.75	46.62	37.92	50.58	58.36	47.95
Los Angeles	45.38	52.68	39.68	43.61	50.52	38.12	59.83	68.31	53.64
Greater California	44.19	51.48	38.24	44.36	51.97	38.10	53.04	58.02	48.65
Connecticut	50.89	59.40	44.37	50.54	59.41	43.68	55.47	60.45	51.75
Detroit	51.73	60.42	45.54	48.89	56.91	42.98	63.88	77.52	55.04
Hawaii	49.17	59.46	40.08	48.96	58.07	39.90	31.99	42.52	-
Iowa	54.31	61.94	47.99	54.13	61.81	47.76	62.96	72.32	56.94
Kentucky	57.00	67.61	48.88	56.44	67.06	48.22	68.29	82.37	59.12
Louisiana	54.93	66.74	46.05	52.26	64.16	42.93	64.19	77.45	55.39
New Jersey	53.12	62.55	46.02	52.88	62.66	45.41	57.79	67.08	51.89
New Mexico	41.56	48.15	35.89	42.53	49.25	36.74	27.37	21.63	30.87
Seattle-Puget Sound	44.94	51.50	39.38	44.89	51.48	39.21	53.55	57.23	49.83
Utah	37.57	44.41	31.63	37.99	44.89	32.03	-	-	-
9 SEER Areas <sup>b</sup>	47.31	54.55	41.53	46.65	53.94	40.71	57.58	65.96	52.07
11 SEER Areas <sup>b</sup>	46.54	53.66	40.88	45.74	52.82	40.01	58.12	66.44	52.49
13 SEER Areas <sup>b</sup>	46.64	53.79	40.95	45.74	52.85	39.99	58.12	66.64	52.33
17 SEER Areas <sup>b</sup>	47.94	55.80	41.72	47.37	55.36	40.95	58.87	68.06	52.60

<sup>a</sup> Rates are per 100,000 and are age-adjusted to the 2000 US Std Population (19 age groups - Census P25-1130)

<sup>b</sup> The SEER 9 areas are San Francisco, Connecticut, Detroit, Hawaii, Iowa, New Mexico, Seattle, Utah and Atlanta.

The SEER 11 areas comprise the SEER 9 areas plus San Jose-Monterey and Los Angeles.

The SEER 13 areas comprise the SEER 11 areas plus the Alaska Native Registry and Rural Georgia.

The SEER 17 areas comprise the SEER 13 areas plus California excluding SF/SJM/LA, Kentucky, Louisiana and New Jersey.

- Statistic not shown. Rate based on less than 16 cases for the time interval.

Table 6.24  
Cancer of the Colon and Rectum (Invasive)

Age-Adjusted SEER Death Rates<sup>a</sup>  
By Registry, Race and Sex

	All Races			Whites			Blacks		
	Total	Males	Females	Total	Males	Females	Total	Males	Females
<u>SEER Death Rates<sup>a</sup>, 2003-2007</u>									
Atlanta & Rural Georgia	15.93	18.47	14.39	13.45	16.13	11.73	23.19	26.61	21.24
Atlanta	15.69	18.05	14.29	13.36	15.93	11.78	22.77	25.60	21.06
Rural Georgia	20.61	26.15	16.74	14.87	19.12	10.85	31.37	39.64	26.79
California	15.81	18.79	13.48	15.78	18.88	13.32	24.27	28.07	21.60
Greater Bay Area	14.97	17.74	12.85	15.07	17.90	12.84	23.44	28.07	20.49
San Francisco-Oakland	15.80	18.93	13.39	15.80	19.13	13.15	23.64	27.38	21.21
San Jose-Monterey	13.25	15.36	11.68	13.72	15.70	12.25	22.35	37.30	-
Los Angeles	16.35	19.45	14.01	15.74	18.96	13.31	25.75	30.04	22.68
Greater California	15.86	18.88	13.47	16.02	19.18	13.49	22.79	25.47	20.82
Connecticut	16.08	18.81	14.16	15.90	18.69	13.93	20.88	24.31	18.65
Detroit	18.39	22.09	15.80	16.89	20.15	14.58	25.05	31.32	20.90
Hawaii	15.26	19.85	11.39	15.63	18.70	12.86	-	-	-
Iowa	18.52	22.10	15.82	18.50	22.01	15.84	25.37	38.43	17.93
Kentucky	20.78	25.22	17.64	20.46	25.05	17.19	28.09	30.83	26.28
Louisiana	20.86	26.35	16.89	18.75	24.18	14.70	28.10	34.76	23.77
New Jersey	19.45	23.31	16.73	19.35	23.36	16.47	24.79	29.23	22.05
New Mexico	15.95	19.24	13.33	16.18	19.57	13.46	16.17	-	-
Seattle-Puget Sound	15.20	17.55	13.17	15.12	17.54	13.03	24.08	25.75	21.04
Utah	12.82	15.07	10.87	12.90	15.12	10.98	-	-	-
9 SEER Areas <sup>b</sup>	16.29	19.29	14.01	15.93	18.86	13.68	23.48	27.97	20.54
11 SEER Areas <sup>b</sup>	16.14	19.10	13.88	15.78	18.71	13.52	24.02	28.58	20.97
13 SEER Areas <sup>b</sup>	16.16	19.13	13.89	15.76	18.71	13.50	24.08	28.70	21.02
17 SEER Areas <sup>b</sup>	17.05	20.33	14.56	16.77	20.10	14.21	24.92	29.54	21.86
Total U.S.	17.60	21.19	14.89	17.09	20.62	14.39	24.73	30.52	20.95

<sup>a</sup> US Mortality Files, National Center for Health Statistics, Centers for Disease Control and Prevention.  
Rates are per 100,000 and are age-adjusted to the 2000 US Std Population (19 age groups - Census P25-1130).

<sup>b</sup> The SEER 9 areas are San Francisco, Connecticut, Detroit, Hawaii, Iowa, New Mexico, Seattle, Utah and Atlanta.  
The SEER 11 areas comprise the SEER 9 areas plus San Jose-Monterey and Los Angeles.  
The SEER 13 areas comprise the SEER 11 areas plus the Alaska Native Registry and Rural Georgia.  
The SEER 17 areas comprise the SEER 13 areas plus California excluding SF/SJM/LA, Kentucky, Louisiana and New Jersey.  
- Statistic not shown. Rate based on less than 16 cases for the time interval.



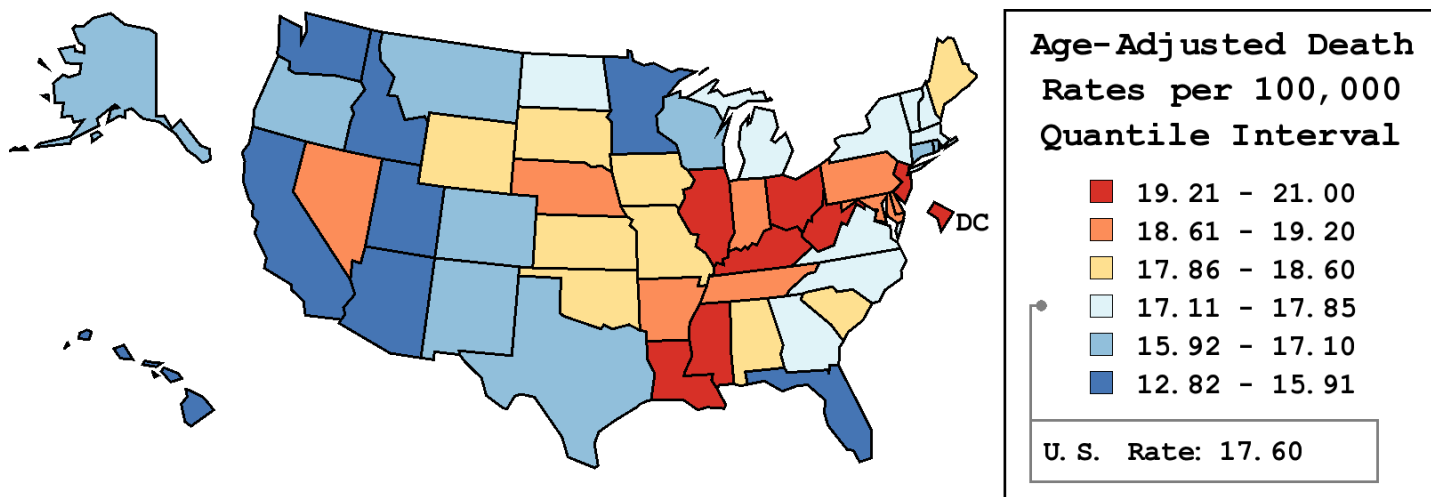
Table 6.25  
Cancer of the Colon and Rectum (Invasive)

Age-Adjusted Cancer Death<sup>a</sup> Rates By State, All Races, 2003-2007

Males and Females

State	Rate	SE	Rank	PD
TOTAL U.S.	17.60	0.03		
High Five States				
West Virginia	21.00 <sup>b</sup>	0.44	(01)	19.31 <sup>c</sup>
Louisiana	20.86 <sup>b</sup>	0.31	(02)	18.48 <sup>c</sup>
Kentucky	20.78 <sup>b</sup>	0.31	(03)	18.04 <sup>c</sup>
Mississippi	20.29 <sup>b</sup>	0.37	(04)	15.26 <sup>c</sup>
D.C.	20.28	0.84	(05)	15.19 <sup>c</sup>
Low Five States				
Washington	15.69 <sup>b</sup>	0.23	(47)	-10.88 <sup>c</sup>
Idaho	15.30 <sup>b</sup>	0.48	(48)	-13.08 <sup>c</sup>
Hawaii	15.26 <sup>b</sup>	0.46	(49)	-13.32 <sup>c</sup>
Arizona	15.23 <sup>b</sup>	0.22	(50)	-13.49 <sup>c</sup>
Utah	12.82 <sup>b</sup>	0.37	(51)	-27.20 <sup>c</sup>

State	Rate	SE	Rank	PD	State	Rate	SE	Rank	PD
Alabama	18.60 <sup>b</sup>	0.28	(17)	5.66	Montana	16.05	0.55	(41)	-8.82
Alaska	17.08	1.00	(36)	-2.96	Nebraska	18.85	0.44	(15)	7.10
Arizona	15.23 <sup>b</sup>	0.22	(50)	-13.49 <sup>c</sup>	Nevada	19.13 <sup>b</sup>	0.43	(11)	8.65
Arkansas	19.12 <sup>b</sup>	0.35	(12)	8.63	New Hampshire	17.50	0.51	(30)	-0.61
California	15.81 <sup>b</sup>	0.10	(46)	-10.21 <sup>c</sup>	New Jersey	19.45 <sup>b</sup>	0.20	(08)	10.49 <sup>c</sup>
Colorado	16.02 <sup>b</sup>	0.29	(42)	-9.00	New Mexico	15.95 <sup>b</sup>	0.41	(43)	-9.40
Connecticut	16.08 <sup>b</sup>	0.29	(40)	-8.68	New York	17.44	0.13	(31)	-0.91
Delaware	18.91	0.65	(14)	7.45	North Carolina	17.34	0.20	(34)	-1.47
D.C.	20.28	0.84	(05)	15.19 <sup>c</sup>	North Dakota	17.60	0.68	(29)	-0.04
Florida	15.91 <sup>b</sup>	0.12	(44)	-9.65	Ohio	19.62 <sup>b</sup>	0.18	(06)	11.46 <sup>c</sup>
Georgia	17.37	0.22	(33)	-1.35	Oklahoma	18.54	0.31	(18)	5.32
Hawaii	15.26 <sup>b</sup>	0.46	(49)	-13.32 <sup>c</sup>	Oregon	16.78	0.29	(38)	-4.68
Idaho	15.30 <sup>b</sup>	0.48	(48)	-13.08 <sup>c</sup>	Pennsylvania	19.20 <sup>b</sup>	0.16	(09)	9.07
Illinois	19.51 <sup>b</sup>	0.18	(07)	10.84 <sup>c</sup>	Rhode Island	17.10	0.53	(35)	-2.89
Indiana	19.19 <sup>b</sup>	0.24	(10)	9.01	South Carolina	17.92	0.29	(22)	1.78
Iowa	18.52	0.32	(19)	5.18	South Dakota	17.90	0.63	(23)	1.66
Kansas	17.88	0.35	(24)	1.59	Tennessee	18.97 <sup>b</sup>	0.25	(13)	7.74
Kentucky	20.78 <sup>b</sup>	0.31	(03)	18.04 <sup>c</sup>	Texas	16.98 <sup>b</sup>	0.13	(37)	-3.54
Louisiana	20.86 <sup>b</sup>	0.31	(02)	18.48 <sup>c</sup>	Utah	12.82 <sup>b</sup>	0.37	(51)	-27.20 <sup>c</sup>
Maine	18.21	0.48	(21)	3.46	Vermont	17.67	0.72	(27)	0.37
Maryland	18.64 <sup>b</sup>	0.26	(16)	5.88	Virginia	17.61	0.22	(28)	0.05
Massachusetts	17.40	0.22	(32)	-1.18	Washington	15.69 <sup>b</sup>	0.23	(47)	-10.88 <sup>c</sup>
Michigan	17.85	0.19	(26)	1.43	West Virginia	21.00 <sup>b</sup>	0.44	(01)	19.31 <sup>c</sup>
Minnesota	15.89 <sup>b</sup>	0.25	(45)	-9.75	Wisconsin	16.50 <sup>b</sup>	0.23	(39)	-6.26
Mississippi	20.29 <sup>b</sup>	0.37	(04)	15.26 <sup>c</sup>	Wyoming	17.87	0.84	(25)	1.51
Missouri	18.51 <sup>b</sup>	0.24	(20)	5.14					



<sup>a</sup> US Mortality Files, National Center for Health Statistics, Centers for Disease Control and Prevention. Rates are per 100,000 and are age-adjusted to the 2000 US Std Population (19 age groups - Census P25-1130).

<sup>b</sup> Difference between state rate and total U.S. rate is statistically significant ( $p \leq .0002$ ).

<sup>c</sup> Absolute percent difference between state rate and total U.S. rate is 10% or more.

SE Standard error of the rate.

PD Percent difference between state rate and total U.S. rate.

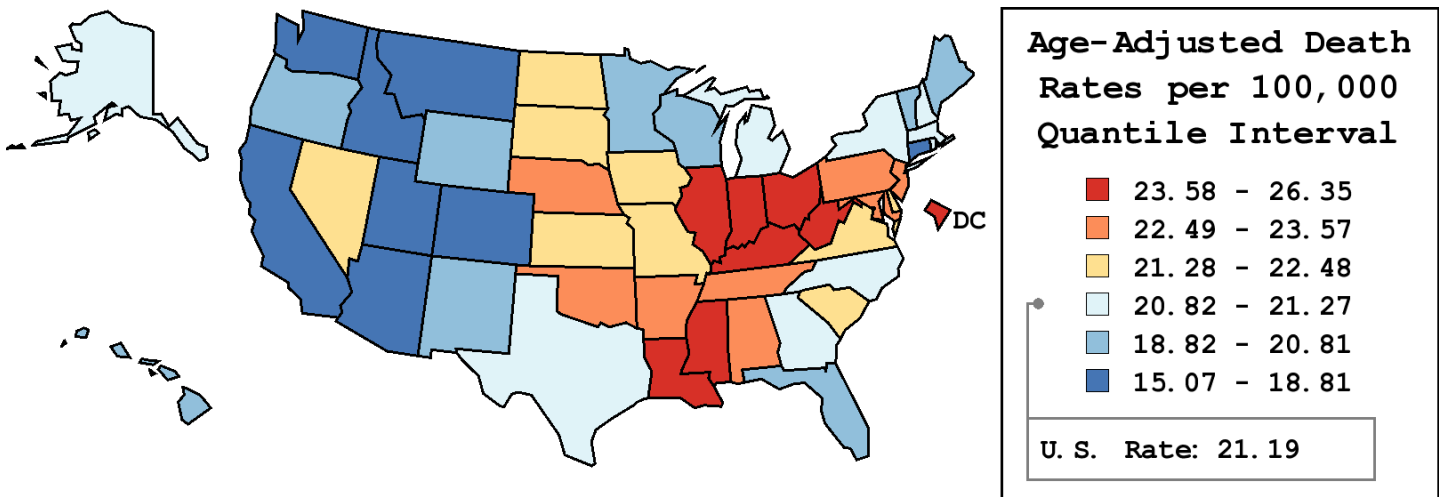
Table 6.26  
Cancer of the Colon and Rectum (Invasive)

Age-Adjusted Cancer Death<sup>a</sup> Rates By State, All Races, 2003-2007

Males

State	Rate	SE	Rank	PD
TOTAL U.S.	21.19	0.06		
High Five States				
Louisiana	26.35 <sup>b</sup>	0.55	(01)	24.33 <sup>c</sup>
West Virginia	25.32 <sup>b</sup>	0.75	(02)	19.47 <sup>c</sup>
Kentucky	25.22 <sup>b</sup>	0.55	(03)	18.99 <sup>c</sup>
Mississippi	24.85 <sup>b</sup>	0.65	(04)	17.28 <sup>c</sup>
D.C.	24.37	1.48	(05)	15.00 <sup>c</sup>
Low Five States				
Arizona	18.51 <sup>b</sup>	0.37	(47)	-12.66 <sup>c</sup>
Washington	18.34 <sup>b</sup>	0.38	(48)	-13.44 <sup>c</sup>
Montana	18.14	0.89	(49)	-14.39 <sup>c</sup>
Idaho	17.22 <sup>b</sup>	0.76	(50)	-18.73 <sup>c</sup>
Utah	15.07 <sup>b</sup>	0.61	(51)	-28.87 <sup>c</sup>

State	Rate	SE	Rank	PD	State	Rate	SE	Rank	PD
Alabama	23.56 <sup>b</sup>	0.49	(10)	11.16 <sup>c</sup>	Montana	18.14	0.89	(49)	-14.39 <sup>c</sup>
Alaska	20.96	1.69	(33)	-1.08	Nebraska	23.10	0.76	(15)	8.99
Arizona	18.51 <sup>b</sup>	0.37	(47)	-12.66 <sup>c</sup>	Nevada	21.98	0.68	(20)	3.72
Arkansas	23.36 <sup>b</sup>	0.60	(11)	10.24 <sup>c</sup>	New Hampshire	20.97	0.88	(32)	-1.05
California	18.79 <sup>b</sup>	0.17	(45)	-11.35 <sup>c</sup>	New Jersey	23.31 <sup>b</sup>	0.36	(12)	9.98
Colorado	18.68 <sup>b</sup>	0.48	(46)	-11.84 <sup>c</sup>	New Mexico	19.24	0.68	(41)	-9.19
Connecticut	18.81 <sup>b</sup>	0.49	(44)	-11.25 <sup>c</sup>	New York	20.84	0.22	(34)	-1.65
Delaware	22.32	1.09	(18)	5.31	North Carolina	21.24	0.35	(27)	0.21
D.C.	24.37	1.48	(05)	15.00 <sup>c</sup>	North Dakota	21.31	1.14	(25)	0.58
Florida	18.89 <sup>b</sup>	0.19	(42)	-10.87 <sup>c</sup>	Ohio	23.62 <sup>b</sup>	0.31	(08)	11.45 <sup>c</sup>
Georgia	21.27	0.39	(26)	0.36	Oklahoma	23.14 <sup>b</sup>	0.54	(13)	9.21
Hawaii	19.85	0.79	(39)	-6.31	Oregon	19.27 <sup>b</sup>	0.48	(40)	-9.05
Idaho	17.22 <sup>b</sup>	0.76	(50)	-18.73 <sup>c</sup>	Pennsylvania	23.57 <sup>b</sup>	0.28	(09)	11.23 <sup>c</sup>
Illinois	23.94 <sup>b</sup>	0.31	(07)	12.98 <sup>c</sup>	Rhode Island	21.03	0.93	(30)	-0.76
Indiana	24.05 <sup>b</sup>	0.43	(06)	13.48 <sup>c</sup>	South Carolina	21.43	0.49	(23)	1.13
Iowa	22.10	0.55	(19)	4.28	South Dakota	21.43	1.05	(24)	1.11
Kansas	21.56	0.59	(22)	1.76	Tennessee	23.13 <sup>b</sup>	0.43	(14)	9.15
Kentucky	25.22 <sup>b</sup>	0.55	(03)	18.99 <sup>c</sup>	Texas	21.03	0.23	(31)	-0.77
Louisiana	26.35 <sup>b</sup>	0.55	(01)	24.33 <sup>c</sup>	Utah	15.07 <sup>b</sup>	0.61	(51)	-28.87 <sup>c</sup>
Maine	20.81	0.81	(35)	-1.82	Vermont	20.54	1.21	(36)	-3.09
Maryland	22.78	0.46	(16)	7.51	Virginia	21.66	0.39	(21)	2.22
Massachusetts	21.06	0.39	(29)	-0.64	Washington	18.34 <sup>b</sup>	0.38	(48)	-13.44 <sup>c</sup>
Michigan	21.08	0.32	(28)	-0.51	West Virginia	25.32 <sup>b</sup>	0.75	(02)	19.47 <sup>c</sup>
Minnesota	18.83 <sup>b</sup>	0.42	(43)	-11.13 <sup>c</sup>	Wisconsin	19.86	0.40	(38)	-6.27
Mississippi	24.85 <sup>b</sup>	0.65	(04)	17.28 <sup>c</sup>	Wyoming	20.13	1.36	(37)	-5.02
Missouri	22.48	0.42	(17)	6.07					



<sup>a</sup> US Mortality Files, National Center for Health Statistics, Centers for Disease Control and Prevention. Rates are per 100,000 and are age-adjusted to the 2000 US Std Population (19 age groups - Census P25-1130).  
<sup>b</sup> Difference between state rate and total U.S. rate is statistically significant ( $p \leq .0002$ ).  
<sup>c</sup> Absolute percent difference between state rate and total U.S. rate is 10% or more.  
SE Standard error of the rate.  
PD Percent difference between state rate and total U.S. rate.

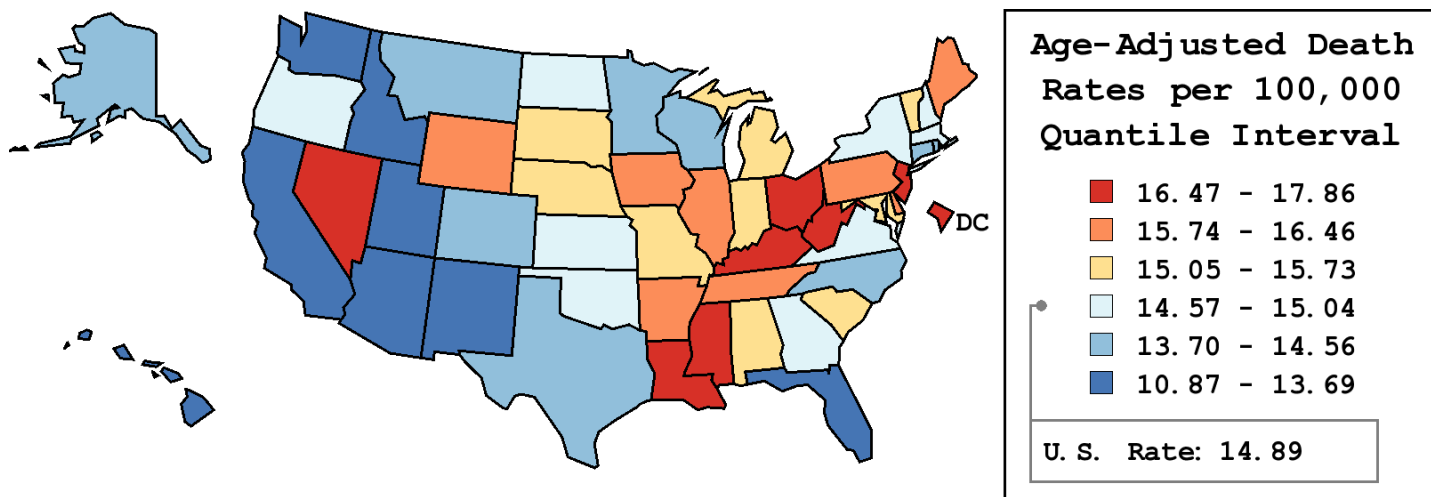
Table 6.27  
Cancer of the Colon and Rectum (Invasive)

Age-Adjusted Cancer Death<sup>a</sup> Rates By State, All Races, 2003-2007

Females

State	Rate	SE	Rank	PD
TOTAL U.S.	14.89	0.04		
High Five States				
West Virginia	17.86 <sup>b</sup>	0.53	(01)	19.89 <sup>c</sup>
Kentucky	17.64 <sup>b</sup>	0.37	(02)	18.46 <sup>c</sup>
D.C.	17.57	1.01	(03)	17.94 <sup>c</sup>
Louisiana	16.89 <sup>b</sup>	0.37	(04)	13.42 <sup>c</sup>
Mississippi	16.89 <sup>b</sup>	0.45	(05)	13.38 <sup>c</sup>
Low Five States				
Florida	13.40 <sup>b</sup>	0.15	(47)	-10.02 <sup>c</sup>
New Mexico	13.33	0.50	(48)	-10.50 <sup>c</sup>
Arizona	12.51 <sup>b</sup>	0.27	(49)	-16.03 <sup>c</sup>
Hawaii	11.39 <sup>b</sup>	0.54	(50)	-23.56 <sup>c</sup>
Utah	10.87 <sup>b</sup>	0.46	(51)	-27.01 <sup>c</sup>

State	Rate	SE	Rank	PD	State	Rate	SE	Rank	PD
Alabama	15.11	0.33	(24)	1.47	Montana	14.33	0.70	(37)	-3.78
Alaska	13.80	1.20	(42)	-7.36	Nebraska	15.66	0.53	(18)	5.17
Arizona	12.51 <sup>b</sup>	0.27	(49)	-16.03 <sup>c</sup>	Nevada	16.54	0.54	(08)	11.05 <sup>c</sup>
Arkansas	15.74	0.42	(16)	5.66	New Hampshire	14.84	0.62	(29)	-0.34
California	13.48 <sup>b</sup>	0.12	(45)	-9.47	New Jersey	16.73 <sup>b</sup>	0.25	(07)	12.31 <sup>c</sup>
Colorado	13.88	0.35	(40)	-6.84	New Mexico	13.33	0.50	(48)	-10.50 <sup>c</sup>
Connecticut	14.16	0.35	(38)	-4.90	New York	15.04	0.16	(26)	0.97
Delaware	16.02	0.79	(13)	7.57	North Carolina	14.48	0.24	(36)	-2.82
D.C.	17.57	1.01	(03)	17.94 <sup>c</sup>	North Dakota	14.83	0.83	(31)	-0.43
Florida	13.40 <sup>b</sup>	0.15	(47)	-10.02 <sup>c</sup>	Ohio	16.78 <sup>b</sup>	0.21	(06)	12.68 <sup>c</sup>
Georgia	14.73	0.26	(33)	-1.10	Oklahoma	15.02	0.37	(27)	0.86
Hawaii	11.39 <sup>b</sup>	0.54	(50)	-23.56 <sup>c</sup>	Oregon	14.76	0.37	(32)	-0.89
Idaho	13.69	0.61	(44)	-8.07	Pennsylvania	16.14 <sup>b</sup>	0.19	(11)	8.38
Illinois	16.46 <sup>b</sup>	0.21	(09)	10.50 <sup>c</sup>	Rhode Island	14.56	0.64	(35)	-2.23
Indiana	15.73	0.29	(17)	5.62	South Carolina	15.20	0.35	(23)	2.05
Iowa	15.82	0.40	(15)	6.24	South Dakota	15.06	0.77	(25)	1.13
Kansas	15.01	0.42	(28)	0.75	Tennessee	15.87	0.30	(14)	6.53
Kentucky	17.64 <sup>b</sup>	0.37	(02)	18.46 <sup>c</sup>	Texas	13.85 <sup>b</sup>	0.16	(41)	-7.01
Louisiana	16.89 <sup>b</sup>	0.37	(04)	13.42 <sup>c</sup>	Utah	10.87 <sup>b</sup>	0.46	(51)	-27.01 <sup>c</sup>
Maine	16.26	0.60	(10)	9.16	Vermont	15.36	0.88	(22)	3.14
Maryland	15.61	0.31	(19)	4.80	Virginia	14.70	0.26	(34)	-1.33
Massachusetts	14.84	0.26	(30)	-0.37	Washington	13.44 <sup>b</sup>	0.28	(46)	-9.75
Michigan	15.43	0.23	(21)	3.60	West Virginia	17.86 <sup>b</sup>	0.53	(01)	19.89 <sup>c</sup>
Minnesota	13.71 <sup>b</sup>	0.30	(43)	-7.93	Wisconsin	13.96	0.28	(39)	-6.27
Mississippi	16.89 <sup>b</sup>	0.45	(05)	13.38 <sup>c</sup>	Wyoming	16.04	1.07	(12)	7.67
Missouri	15.56	0.29	(20)	4.45					



<sup>a</sup> US Mortality Files, National Center for Health Statistics, Centers for Disease Control and Prevention. Rates are per 100,000 and are age-adjusted to the 2000 US Std Population (19 age groups - Census P25-1130).  
<sup>b</sup> Difference between state rate and total U.S. rate is statistically significant ( $p \leq .0002$ ).  
<sup>c</sup> Absolute percent difference between state rate and total U.S. rate is 10% or more.  
SE Standard error of the rate.  
PD Percent difference between state rate and total U.S. rate.

Table 6.28  
Cancer of the Colon and Rectum (Invasive)

Estimated United States Cancer Prevalence Counts<sup>a</sup> on January 1, 2007  
By Race/Ethnicity, Sex and Years Since Diagnosis

Years Since Diagnosis		0 to <5	5 to <10	10 to <15	15 to <20	20 to <25	25 to <30	0 to <17 <sup>e</sup>	0 to <32 <sup>e</sup>	>=32 <sup>g</sup>	Complete <sup>h</sup>
<u>Race</u>	<u>Sex</u>										
All Races <sup>b</sup>	Both Sexes	404,997	270,735	166,731	115,238	70,411	38,673	895,585	1,076,622	35,871	1,112,493
	Males	202,765	135,385	81,371	56,362	32,422	15,808	445,736	527,903	12,733	540,636
	Females	202,232	135,350	85,360	58,876	37,989	22,865	449,849	548,719	23,138	571,857
White <sup>b</sup>	Both Sexes	341,352	235,165	145,812	101,665	62,835	34,516	769,126	930,221	31,871	962,092
	Males	173,461	118,712	71,548	50,351	29,025	14,163	386,960	460,739	11,452	472,191
	Females	167,891	116,453	74,264	51,314	33,810	20,353	382,166	469,482	20,419	489,901
Black <sup>b</sup>	Both Sexes	42,942	23,884	14,018	9,625	5,473	2,713	85,238	99,301	2,547	101,848
	Males	18,611	10,360	6,108	4,001	2,227	1,002	37,089	42,489	813	43,302
	Females	24,331	13,524	7,910	5,624	3,246	1,711	48,149	56,812	1,734	58,546
Asian/ Pacific Islander <sup>c</sup>	Both Sexes	14,736	8,438	5,000	+	+	+	29,538	+	+	+
	Males	7,684	4,367	2,608	+	+	+	15,315	+	+	+
	Females	7,052	4,071	2,392	+	+	+	14,223	+	+	+
Hispanic <sup>d</sup>	Both Sexes	23,522	12,310	6,624	+	+	+	44,705	+	+	+
	Males	12,416	6,562	3,415	+	+	+	23,519	+	+	+
	Females	11,106	5,748	3,209	+	+	+	21,186	+	+	+

Estimated prevalence percent<sup>a</sup> on January 1, 2007, of the SEER 11 population diagnosed in the previous 17 years  
By Age at Prevalence, Race/Ethnicity and Sex

Age at Prevalence		Age Specific (Crude)									Age-Adjusted <sup>f</sup>	
		All Ages	0-9	10-19	20-29	30-39	40-49	50-59	60-69	70-79	80+	All Ages
<u>Race</u>	<u>Sex</u>											
All Races <sup>c</sup>	Both Sexes	0.2552%	-	0.0003%	0.0050%	0.0233%	0.0916%	0.3014%	0.7335%	1.4720%	2.1229%	0.2630%
	Males	0.2587%	-	0.0002%	0.0045%	0.0241%	0.0961%	0.3361%	0.8653%	1.7801%	2.3888%	0.3052%
	Females	0.2518%	-	0.0004%	0.0055%	0.0225%	0.0871%	0.2682%	0.6142%	1.2324%	1.9745%	0.2300%
White <sup>c</sup>	Both Sexes	0.2670%	-	0.0003%	0.0053%	0.0233%	0.0884%	0.2874%	0.7177%	1.4779%	2.1629%	0.2614%
	Males	0.2702%	-	0.0003%	0.0047%	0.0245%	0.0915%	0.3257%	0.8555%	1.7819%	2.4334%	0.3043%
	Females	0.2638%	-	0.0004%	0.0059%	0.0220%	0.0852%	0.2496%	0.5896%	1.2357%	2.0134%	0.2271%
Black <sup>c</sup>	Both Sexes	0.2031%	-	-	0.0035%	0.0249%	0.1011%	0.3729%	0.8885%	1.5260%	1.8955%	0.2803%
	Males	0.1900%	-	-	0.0035%	0.0226%	0.1070%	0.3893%	0.9589%	1.7513%	1.9471%	0.3033%
	Females	0.2149%	-	-	0.0034%	0.0269%	0.0959%	0.3592%	0.8340%	1.3750%	1.8704%	0.2644%
Asian/ Pacific Islander <sup>c</sup>	Both Sexes	0.2348%	-	-	0.0037%	0.0215%	0.0963%	0.3113%	0.6905%	1.3649%	1.9298%	0.2485%
	Males	0.2502%	-	-	0.0042%	0.0228%	0.1088%	0.3371%	0.8236%	1.7300%	2.2758%	0.2968%
	Females	0.2204%	-	-	0.0032%	0.0203%	0.0847%	0.2887%	0.5773%	1.0963%	1.7057%	0.2120%
Hispanic <sup>d</sup>	Both Sexes	0.0954%	-	-	0.0037%	0.0176%	0.0659%	0.2194%	0.5625%	1.0195%	1.3458%	0.1851%
	Males	0.0968%	-	-	0.0037%	0.0173%	0.0655%	0.2435%	0.6708%	1.3310%	1.5392%	0.2209%
	Females	0.0940%	-	-	0.0037%	0.0179%	0.0664%	0.1963%	0.4699%	0.7912%	1.2331%	0.1582%

<sup>a</sup> US 2007 cancer prevalence counts are based on 2007 cancer prevalence proportions from the SEER registries and 1/1/2007 US population estimates based on the average of 2006 and 2007 population estimates from the US Bureau of the Census. Prevalence was calculated using the First Malignant Primary Only for a person.

<sup>b c d</sup> Statistics based on (b) SEER 9 Areas (c) SEER 11 Areas and Rural Georgia (d) NHIA for Hispanic for SEER 11 Areas and Rural Georgia.

<sup>e</sup> Maximum limited-duration prevalence: 32 years for 1975-2007 SEER 9 data; 17 years for 1990-2007 SEER 11 data (used to calculate prevalence for Hispanics and Asian Pacific Islanders).

<sup>f</sup> Percentages are age-adjusted to the 2000 US Standard Population (19 age groups - Census P25-1130) by 5-year age groups.

<sup>g h i</sup> (g) Cases diagnosed more than 32 years ago were estimated using the completeness index method (Capocaccia et. al. 1997, Merrill et. al. 2000). (h) Complete prevalence is obtained by summing 0 to <32 and >=32. (i) Age-specific completeness index was approximated using empirical data from historical Connecticut tumor registry.

- Statistic not shown. Statistic based on fewer than 5 cases estimated alive in SEER for the time interval.

+ Not available.

Table 6.29

## Cancer of the Colon And Rectum (Invasive)

Percent Distribution and Counts by Histology among Histologically Confirmed Cases, 2003-2007  
Both Sexes by Race

Histology <sup>a</sup>	All Races		White		Black		Asian/Pacific Islander		American Indian/ Alaska Native <sup>b</sup>		Hispanic <sup>c</sup>	
	Count	Percent	Count	Percent	Count	Percent	Count	Percent	Count	Percent	Count	Percent
Carcinoma	171,276	99.5%	139,225	99.5%	17,491	99.5%	12,245	99.6%	787	98.9%	14,921	99.5%
Epidermoid carcinoma <sup>d</sup> (8051-8131)	739	0.4%	621	0.4%	91	0.5%	-	-	-	-	62	0.4%
Squamous cell carcinoma (8070-8078,8083-8084)	677	0.4%	566	0.4%	87	0.5%	-	-	-	-	53	0.4%
Adenocarcinoma (8050,8140-8147, 8160-8162,8180-8221, 8250-8507,8520-8551,8560, 8570-8574,8576,8940-8941)	162,777	94.6%	133,076	95.1%	16,236	92.3%	11,536	93.8%	732	92.0%	13,990	93.3%
Adenocarcinoma, NOS (8140)	112,318	65.3%	91,462	65.4%	11,299	64.3%	8,382	68.1%	547	68.7%	9,608	64.0%
Adenocarcinoma in adenomatous polyp (8210)	11,748	6.8%	9,505	6.8%	1,035	5.9%	964	7.8%	51	6.4%	926	6.2%
Adenocarcinoma in villous adenoma (8261)	5,354	3.1%	4,436	3.2%	534	3.0%	318	2.6%	16	2.0%	542	3.6%
Mucinous adenocarcinoma (8470-8473,8480,8482)	12,673	7.4%	10,749	7.7%	1,125	6.4%	682	5.5%	50	6.3%	1,185	7.9%
Mucin-producing adenocarcinoma (8481)	3,707	2.2%	2,999	2.1%	493	2.8%	187	1.5%	-	-	313	2.1%
Signet ring adenocarcinoma (8490)	1,964	1.1%	1,665	1.2%	156	0.9%	127	1.0%	-	-	170	1.1%
Other adenocarcinomas <sup>e</sup>	15,013	8.7%	12,260	8.8%	1,594	9.1%	876	7.1%	51	6.4%	1,246	8.3%
Other specific carcinomas (8012-8015,8030-8046, 8150-8155,8170-8175, 8230-8249,8508,8510-8513, 8561-8562,8575,8580-8671)	6,182	3.6%	4,252	3.0%	988	5.6%	602	4.9%	43	5.4%	720	4.8%
Neuroendocrine carcinoid (8240-8245)	5,190	3.0%	3,420	2.4%	901	5.1%	547	4.4%	36	4.5%	636	4.2%
Other <sup>f</sup>	992	0.6%	832	0.6%	87	0.5%	55	0.4%	-	-	84	0.6%
Unspecified, Carcinoma, NOS (8010-8011, 8020-8022)	1,578	0.9%	1,276	0.9%	176	1.0%	97	0.8%	-	-	149	1.0%

Source: SEER 17 areas (San Francisco, Connecticut, Detroit, Hawaii, Iowa, New Mexico, Seattle, Utah, Atlanta, San Jose-Monterey, Los Angeles, Alaska Native Registry, Rural Georgia, California excluding SF/SJM/LA, Kentucky, Louisiana and New Jersey). Percents may not sum to 100 due to rounding.

<sup>a</sup> Excludes Kaposi Sarcoma, mesothelioma, lymphomas, leukemias, myelomas, lymphoreticular, and immunoproliferative diseases.

<sup>b</sup> Estimates for American Indian/Alaska Native are based on the CHSDA(Contract Health Service Delivery Area) counties.

<sup>c</sup> Hispanic is not mutually exclusive from whites, blacks, Asian/Pacific Islanders, and American Indians/Alaska Natives.

<sup>d</sup> Underlying incidence data for Hispanics are based on NHIA and exclude cases from the Alaska Native Registry.

<sup>e</sup> Epidermoid carcinoma includes squamous, basal, and transitional cell carcinomas.

<sup>f</sup> Includes histologies 8050, 8141-8147, 8160-8162, 8180-8204, 8211-8221, 8250-8260, 8262-8264, 8270-8463, 8500-8507, 8514, 8520-8551, 8560, 8570-8574, 8576, 8940-8941.

<sup>f</sup> Includes histologies 8012-8015, 8030-8046, 8150-8155, 8170-8175, 8230-8231, 8246-8249, 8508, 8510-8513, 8561-8562, 8575, 8580-8671.

- Statistic not shown due to fewer than 16 cases during the time period.

Table 6.29 - continued

## Cancer of the Colon And Rectum (Invasive)

Percent Distribution and Counts by Histology among Histologically Confirmed Cases, 2003-2007  
Both Sexes by Race

Histology <sup>a</sup>	All Races		White		Black		Asian/Pacific Islander		American Indian/ Alaska Native <sup>b</sup>		Hispanic <sup>c</sup>	
	Count	Percent	Count	Percent	Count	Percent	Count	Percent	Count	Percent	Count	Percent
Sarcoma and other soft tissue tumors (8680-8713,8800-8921, 8990-8991,9040-9044, 9120-9136,9150-9252, 9370-9373,9540-9582)	97	0.1%	74	0.1%	-	-	-	-	-	-	-	-
Other specific types (8720-8790,8930-8936, 8950-8983,9000-9030, 9060-9110,9260-9365, 9380-9539)	211	0.1%	155	0.1%	28	0.2%	27	0.2%	-	-	20	0.1%
Unspecified (8000-8005)	514	0.3%	428	0.3%	50	0.3%	21	0.2%	-	-	50	0.3%
Total <sup>d</sup>	172,098	100.0%	139,882	100.0%	17,582	100.0%	12,300	100.0%	796	100.0%	15,001	100.0%

Source: SEER 17 areas (San Francisco, Connecticut, Detroit, Hawaii, Iowa, New Mexico, Seattle, Utah, Atlanta, San Jose-Monterey, Los Angeles, Alaska Native Registry, Rural Georgia, California excluding SF/SJM/LA, Kentucky, Louisiana and New Jersey). Percents may not sum to 100 due to rounding.

<sup>a</sup> Excludes Kaposi Sarcoma, mesothelioma, lymphomas, leukemias, myelomas, lymphoreticular, and immunoproliferative diseases.

<sup>b</sup> Estimates for American Indian/Alaska Native are based on the CHSDA(Contract Health Service Delivery Area) counties.

<sup>c</sup> Hispanic is not mutually exclusive from whites, blacks, Asian/Pacific Islanders, and American Indians/Alaska Natives.

Underlying incidence data for Hispanics are based on NHIA and exclude cases from the Alaska Native Registry.

<sup>d</sup> Total includes carcinoma cases from the previous page.

- Statistic not shown due to fewer than 16 cases during the time period.

# SEER Observed Incidence, SEER Delay Adjusted Incidence and US Death Rates<sup>a</sup> Cancer of the Colon and Rectum, by Race and Sex

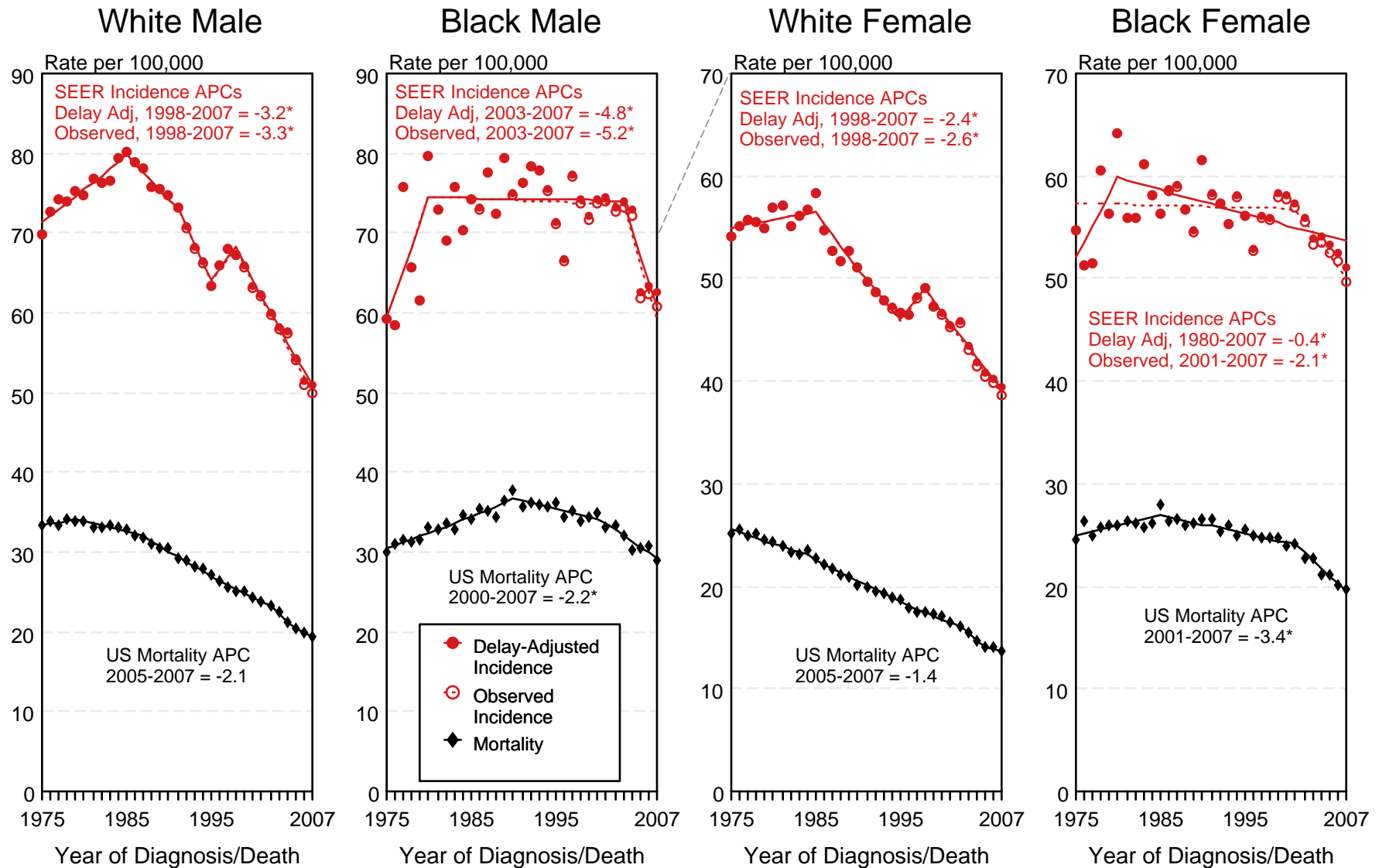


Figure 6.1

<sup>a</sup> Source: SEER 9 areas and US Mortality Files (National Center for Health Statistics, CDC). Rates are age-adjusted to the 2000 US Std Population (19 age groups - Census P25-1103). Regression lines and APCs are calculated using the Joinpoint Regression Program Version 3.4.3, April 2010, National Cancer Institute. The APC is the Annual Percent Change for the regression line segments. The APC shown on the graph is for the most recent trend.  
\* The APC is significantly different from zero ( $p < 0.05$ ).

# SEER Incidence and US Death Rates<sup>a</sup> Cancer of the Colon and Rectum, Both Sexes

## Joinpoint Analyses for Whites and Blacks from 1975-2007 and for Asian/Pacific Islanders, American Indians/Alaska Natives and Hispanics from 1992-2007

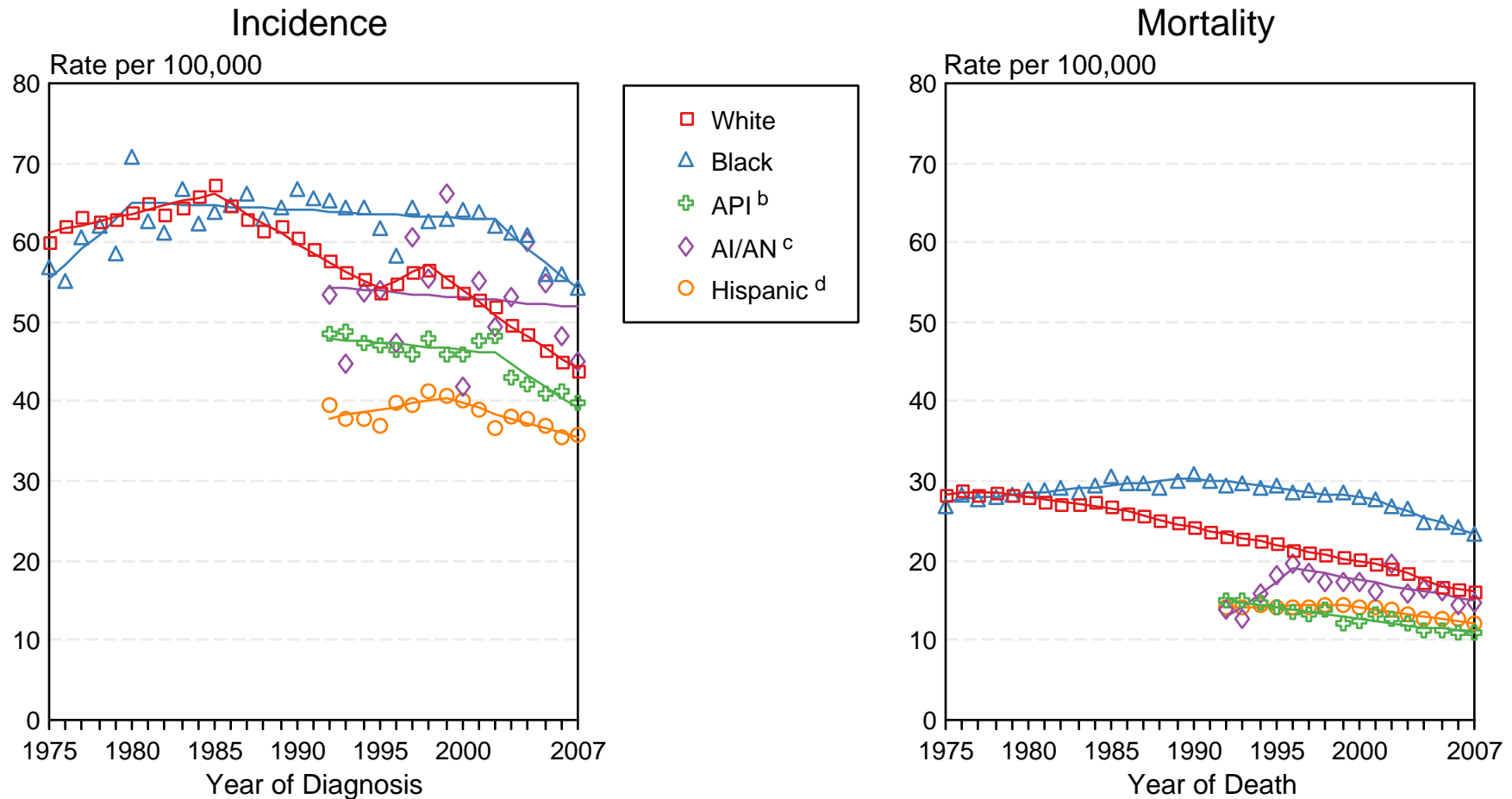


Figure 6.2

Source: Incidence data for whites and blacks are from the SEER 9 areas (San Francisco, Connecticut, Detroit, Hawaii, Iowa, New Mexico, Seattle, Utah, Atlanta). Incidence data for Asian/Pacific Islanders, American Indians/Alaska Natives and Hispanics are from the SEER 13 Areas (SEER 9 Areas, San Jose-Monterey, Los Angeles, Alaska Native Registry and Rural Georgia). Mortality data are from US Mortality Files, National Center for Health Statistics, CDC.

<sup>a</sup> Rates are age-adjusted to the 2000 US Std Population (19 age groups - Census P25-1103).

Regression lines are calculated using the Joinpoint Regression Program Version 3.4.3, April 2010, National Cancer Institute. Joinpoint analyses for Whites and Blacks during the 1975-2007 period allow a maximum of 4 joinpoints. Analyses for other ethnic groups during the period 1992-2007 allow a maximum of 2 joinpoints.

<sup>b</sup> API = Asian/Pacific Islander.

<sup>c</sup> AI/AN = American Indian/Alaska Native. Rates for American Indian/Alaska Native are based on the CHSDA(Contract Health Service Delivery Area) counties.

<sup>d</sup> Hispanic is not mutually exclusive from whites, blacks, Asian/Pacific Islanders, and American Indians/Alaska Natives. Incidence data for Hispanics are based on NHIA and exclude cases from the Alaska Native Registry. Mortality data for Hispanics exclude cases from Connecticut, the District of Columbia, Maine, Maryland, Minnesota, New Hampshire, New York, North Dakota, Oklahoma, and Vermont.



# SEER Observed Incidence and SEER Delay Adjusted Incidence Rates<sup>a</sup> SEER 9 Areas Compared to SEER 13 Areas Cancer of the Colon and Rectum, Male, by Race

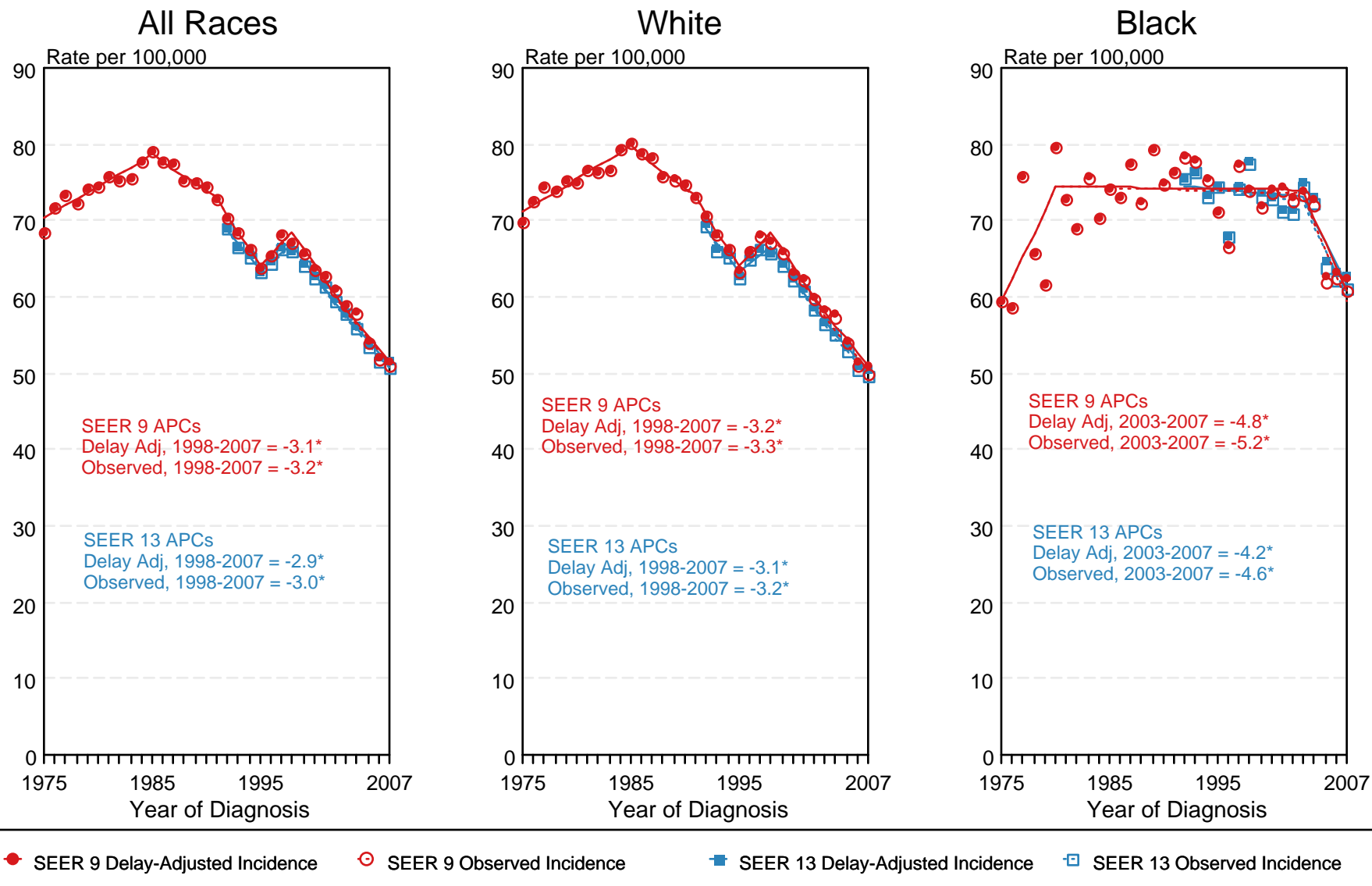
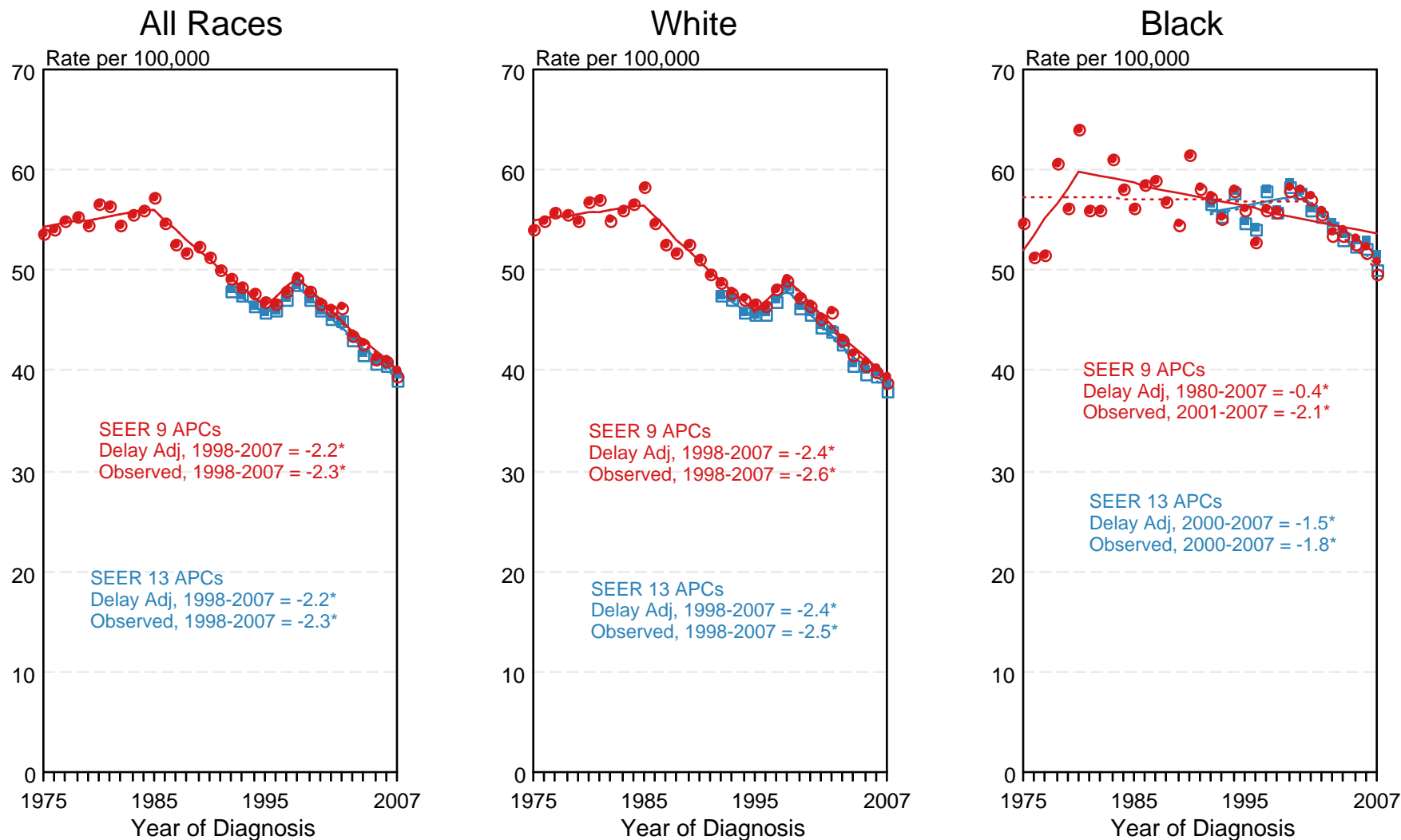


Figure 6.3

<sup>a</sup> Source: SEER 9 areas and SEER 13 areas.  
Rates are age-adjusted to the 2000 US Std Population (19 age groups - Census P25-1103).  
Regression lines and APCs are calculated using the Joinpoint Regression Program Version 3.4.3, April 2010, National Cancer Institute.  
The APC is the Annual Percent Change for the regression line segments. The APC shown on the graph is for the most recent trend.  
\* The APC is significantly different from zero ( $p < 0.05$ ).

# SEER Observed Incidence and SEER Delay Adjusted Incidence Rates<sup>a</sup> SEER 9 Areas Compared to SEER 13 Areas Cancer of the Colon and Rectum, Female, by Race



● SEER 9 Delay-Adjusted Incidence   
 ○ SEER 9 Observed Incidence   
 ■ SEER 13 Delay-Adjusted Incidence   
 □ SEER 13 Observed Incidence

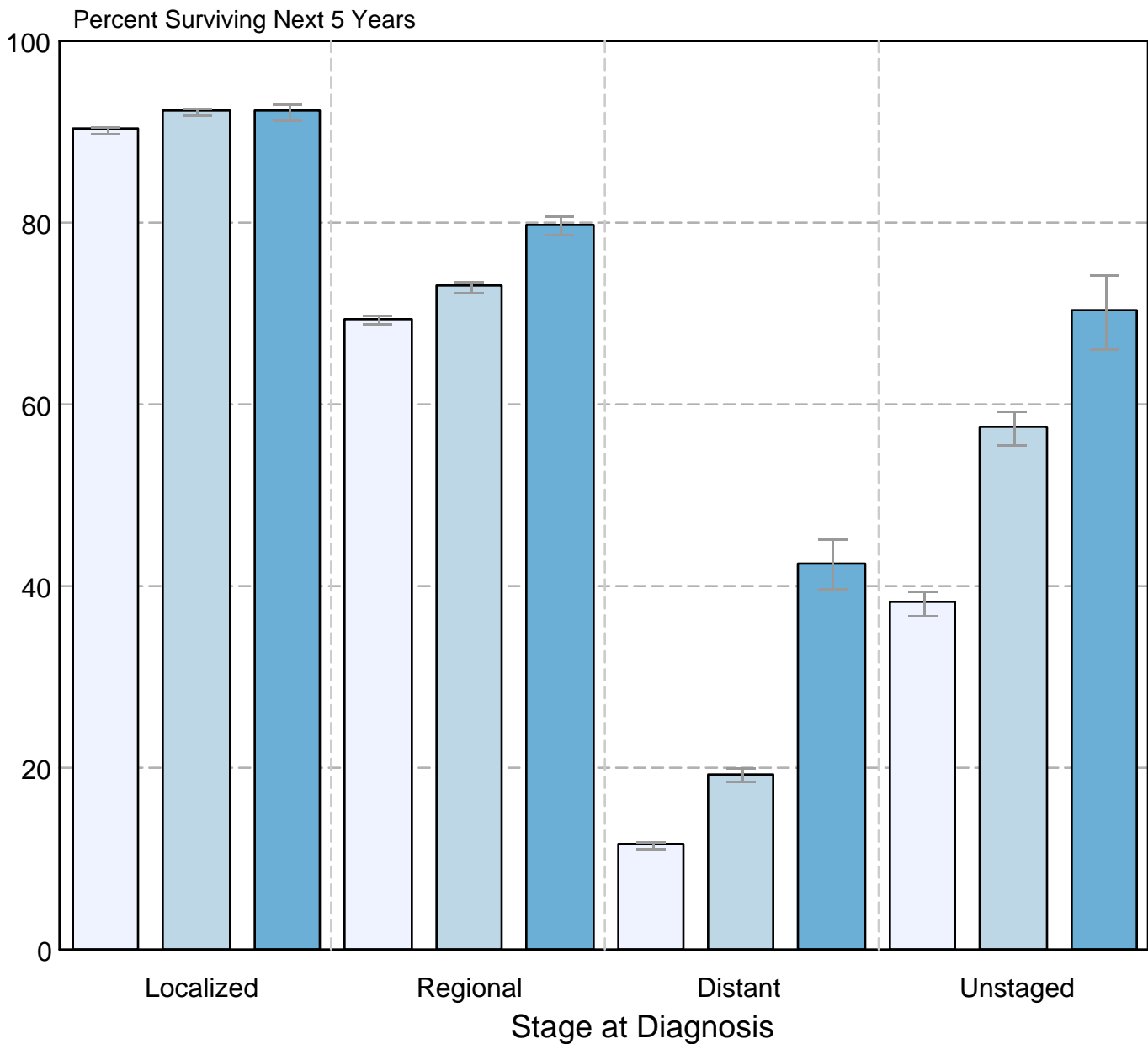
<sup>a</sup> Source: SEER 9 areas and SEER 13 areas.  
 Rates are age-adjusted to the 2000 US Std Population (19 age groups - Census P25-1103).  
 Regression lines and APCs are calculated using the Joinpoint Regression Program Version 3.4.3, April 2010, National Cancer Institute.  
 The APC is the Annual Percent Change for the regression line segments. The APC shown on the graph is for the most recent trend.  
 \* The APC is significantly different from zero ( $p < 0.05$ ).

Figure 6.4

Figure 6.5

## Cancer of the Colon and Rectum 5-Year SEER Conditional Relative Survival and 95% Confidence Intervals

Probability of surviving the next 5 years given the cohort  
has already survived 0, 1, or 3 years  
1998-2006 by stage at diagnosis



Source: SEER 17 areas (San Francisco, Connecticut, Detroit, Hawaii, Iowa, New Mexico, Seattle, Utah, Atlanta, San Jose-Monterey, Los Angeles, Alaska Native Registry, Rural Georgia, California excluding SF/SJM/LA, Kentucky, Louisiana, and New Jersey). California excluding SF/SJM/LA, Kentucky, Louisiana, and New Jersey contribute cases for diagnosis years 2000-2006. The remaining 13 SEER Areas contribute cases for the entire period 1998-2006. Percent surviving is not shown if based on less than 25 cases. Confidence intervals are not shown if length of the confidence interval is greater than 5 times the standard error.