

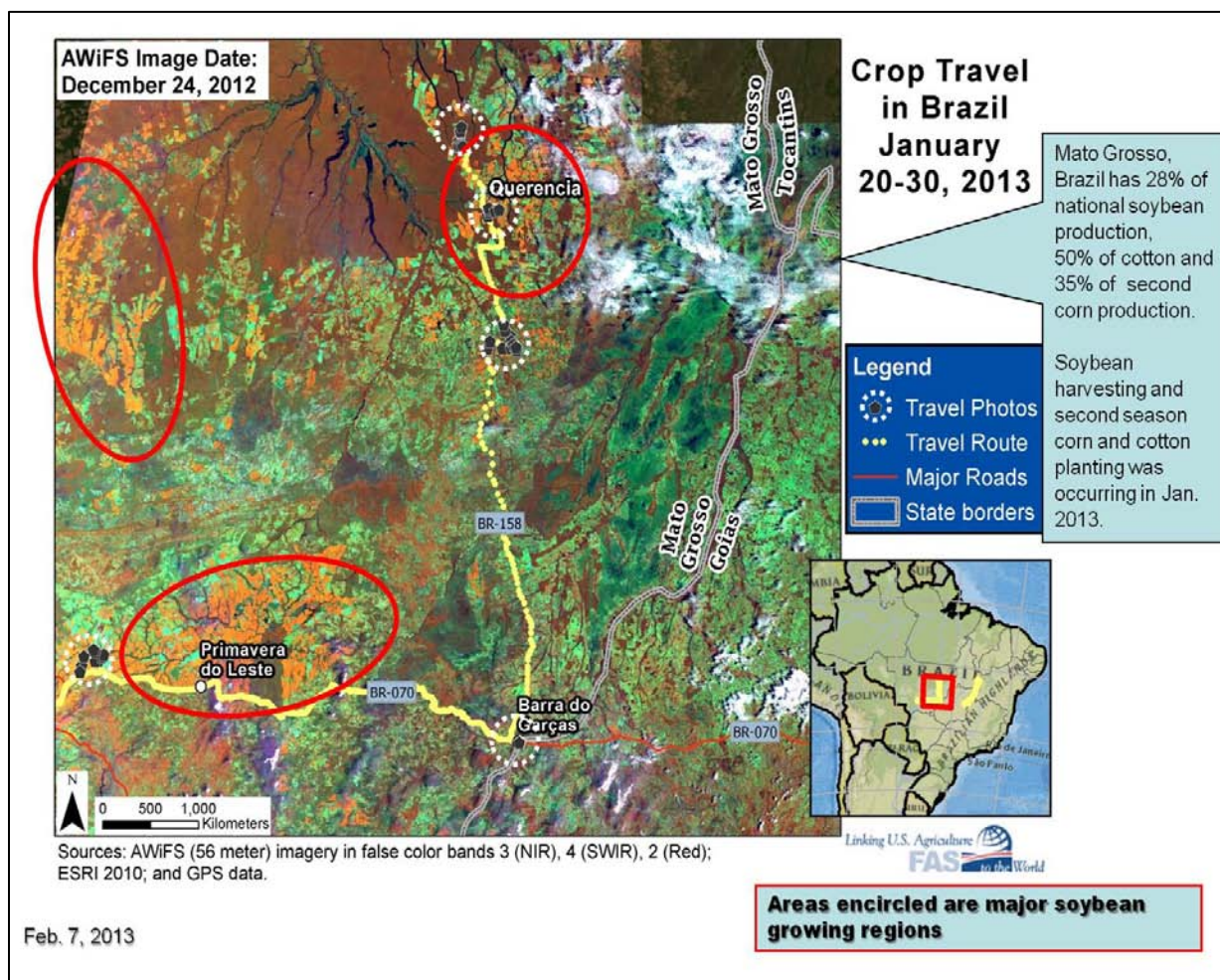


United States
Department of
Agriculture

Foreign
Agricultural
Service

Circular Series
WAP 2-13

World Agricultural Production



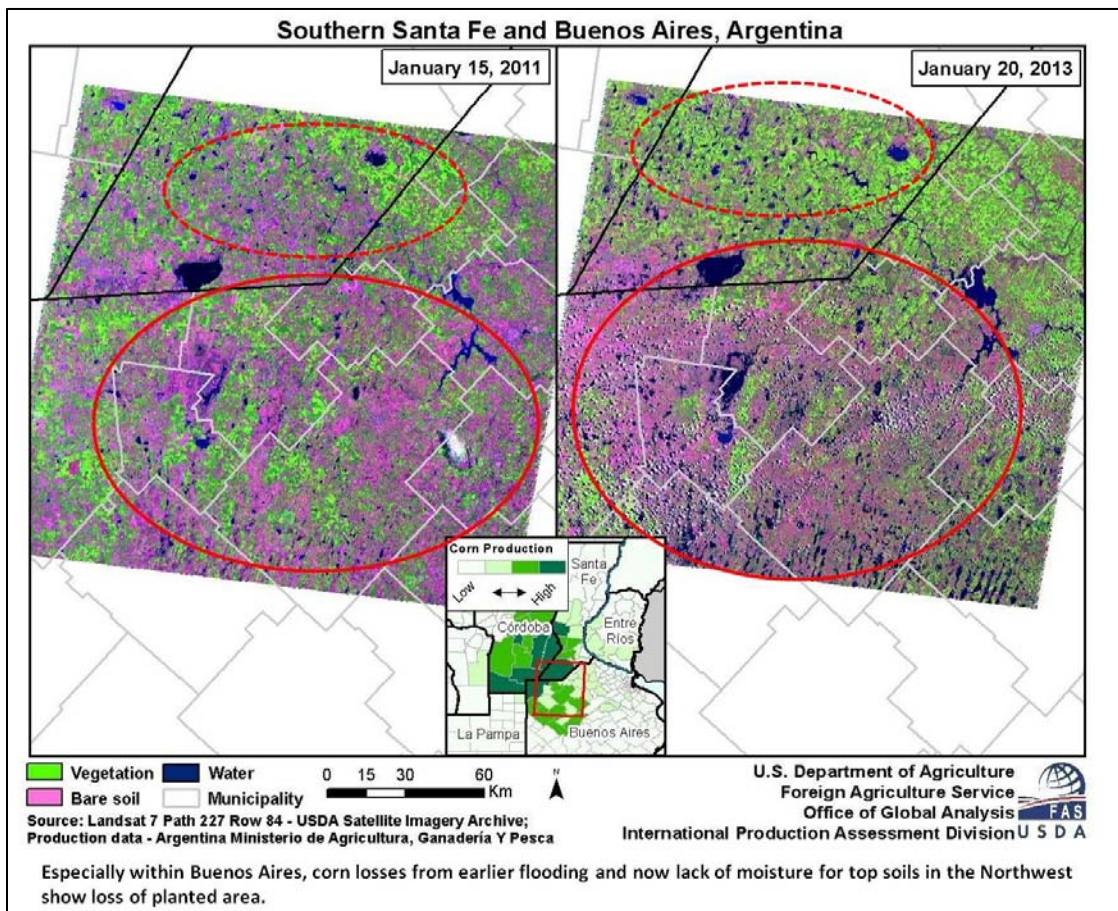
Brazil Corn: Estimated Yield Increases Following Good Rainfall

The USDA forecasts Brazil corn production for 2012/13 at 72.5 million tons, up 1.5 million or 2 percent from last month, but down 0.5 million tons or less than 1 percent from last year's record production. Area is estimated at a record 15.5 million hectares, no change from last month, but up 300 thousand or 2 percent from last year. Yield is forecast at 4.68 tons per hectare, up 12 percent compared to the 5-year average. Yield prospects for Brazil's first season corn have improved due to good grain-fill conditions in the key states of Paraná and Goiás. Conditions are mixed in Rio Grande do Sul. Weather in late February will be a key determinant of yield potential for that state. Brazil has a larger second-season, or *safrinha* crop, which accounts for

Approved by the World Agricultural Outlook Board

more than 54 percent of national production. The *safrinha* crop is planted in January after the early-season soybean harvest. In late January 2013 analysts from the Foreign Agricultural Service traveled through Mato Grosso's main *safrinha* producing state. Rain in Mato Grosso is causing some delays in harvesting of the early soybean varieties but farmers are able to harvest the soybeans and plant the *safrinha* corn. Corn planting can extend to the beginning of March in Mato Grosso but farmers are anxious to plant right now because the earlier planted corn has higher yield potential. The *safrinha* yield potential is determined by the length of the rainy season. Last year the rainy season in Mato Grosso extended through June, and record yields for *safrinha* corn were achieved. The rainy season typically ends in mid to late April. (For more information, contact Bob Tetrault at 202-720-1071.)

Argentina Corn: Conditions Vary From Region-to-Region



The USDA forecasts Argentine corn production for 2012/13 at 27.0 million metric tons, 4 percent below last month and 29 percent above the 21.0 million produced in 2011/12. Harvested area is estimated at 3.5 million hectares, unchanged from last month but down 3 percent from last year's drought-affected national area. Yield is estimated at 7.71 tons per hectare, 4 percent lower than last month but 32 percent higher than last year. Crop condition as well as crop development vary across regions and from field to field, making it difficult to infer yield response to the changing weather. Some of the Argentine corn now at grain-fill stage has base leaves turning yellow due to both moisture-deficit and to corn mite infestation, resulting in

potential yield loss. Farmers have been battling armyworms and stem borers as well as blight and smut in areas that earlier had excess moisture but now have low surface moisture. Additional rainfall is needed across much of the nation to remove current soil moisture deficits of 40 up to 80 millimeters. Harvest has begun in northern and central Argentina, just as late seeding is finishing in the south. *(For more information, contact Dr. Denise McWilliams, 202-720-0107.)*

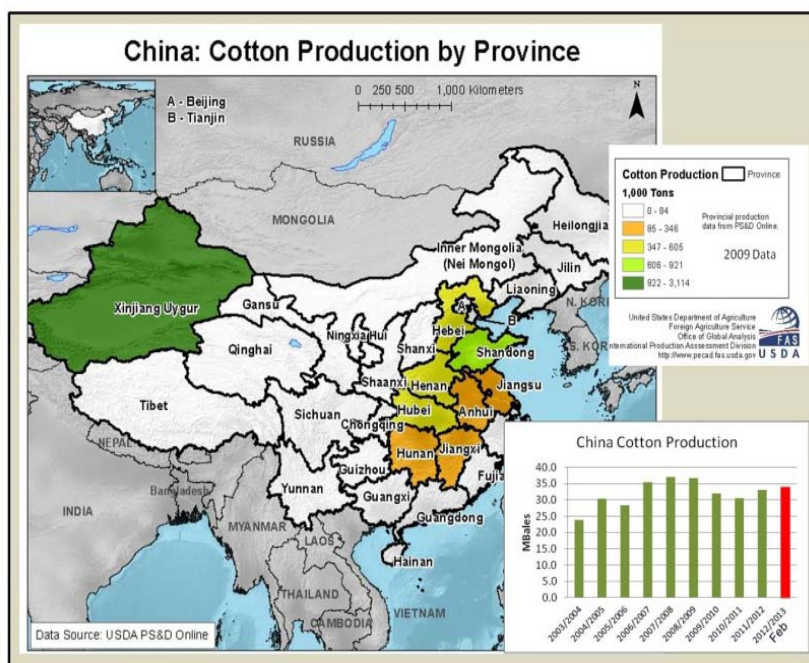
Brazil Soybeans: Estimated Yield Increases Following Good Rainfall

The USDA forecasts Brazil soybean production for 2012/13 at 83.5 million tons, up 1.0 million or 1 percent from last month and up 17.0 million or 26 percent from last year's drought-reduced crop. Area is estimated at a record 27.5 million hectares, unchanged from last month and up 2.5 million hectares or 10 percent from last year. Yield is forecast at 3.04 tons per hectare, compared to 2.66 tons last year and the 5-year average of 2.85 tons. Yield prospects for Brazil soybeans have improved due to good early-season conditions in the key states of Mato Grosso, Parana and Bahia. In late January 2013 analysts from the Foreign Agricultural Service traveled through Brazil's main soybean producing state, Mato Grosso, and a key swing state, Bahia. Soybean crop conditions in both states were observed to be very good. Harvesting of the early soybean varieties has started in Mato Grosso, and soybean yields are reported by contacts in the region to be as good as last year. In Bahia contacts are expecting soybean yields to be significantly better compared to the drought induced lower yields of last year. Rains during the harvest of the early-season varieties in Mato Grosso are causing some delays and may affect the quality of the early soybeans, but the rains are boosting yield potential for the medium and long-cycle soybeans. The main soybean harvest in Mato Grosso will commence in late February. Brazilian farmers enthusiastically reacted to high soybean prices this year and increased area 10 percent to a record 27.5 million hectares. Brazil is the world's largest producer of soybeans, surpassing the United States this year when the United States suffered its worst drought in 50 years. *(For more information, contact Bob Tetrault at 202-720-1071.)*

Argentina Soybeans: Soy Progressing But Dry Weather Heightens Concerns

Argentine soybean production for the 2012/13 season is estimated at 53.0 million metric tons 2 percent less than last month and 32 percent more than last year. Area is estimated at 19.5 million hectares unchanged from last month and 11 percent more than last year. Yield is forecast to be 2.72 tons per hectare, 2 percent lower than last month and 19 percent higher than last year. The seeding of the crop is complete, even in the northern region that earlier was too dry to seed. Most of the early-planted crop is in pod-set, while the second crop and late-planted beans are largely in the moisture sensitive reproductive stage. Farmers are scouting fields for caterpillars to determine if threshold levels warrant insecticide spraying at this time. A lack of moisture in some areas and the limited and widely dispersed rains, seen within the last 15 days have caused concern for the crop. *(For more information, contact Dr. Denise McWilliams, 202-720-0107.)*

China Cotton: 2012/13 Production Greater than Expected

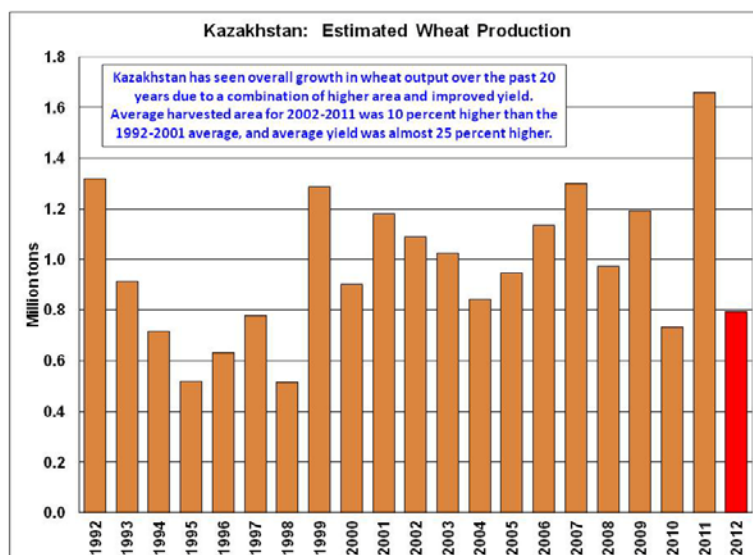


Cotton production for 2012/13 is estimated at 34.0 million bales (7.4 million tons), up 0.5 million or 1.5 percent from last month and up nearly 3 percent from last year. Estimated area was increased to 5.3 million hectares, up 1 percent from last month but down 2 percent from a year ago. Yield is estimated at 1403 kilograms per hectare, unchanged from last month but up 5 percent from last year's record yield. The revision this month is based on updated harvest, procurement, and cotton shipment data from Chinese government and cotton

industry sources. In particular, harvest results continue to exceed previous expectations in Northwest China, where higher planted area and favorable weather during the 2012 growing season resulted in record output. (For more information, contact Paulette Sandene at 202-690-0133.)

Kazakhstan Wheat: Harvest Falls Almost 13 Million Tons From Last Year

The USDA estimates Kazakhstan wheat production for 2012/13 at 9.8 million tons, down 0.7 million from last month and down 12.9 million from last year. Harvested area is estimated at 12.4 million hectares against 13.7 million last year, and yield is estimated at 0.79 tons per hectare, down 52 percent from last year and 32 percent lower than the 5-year average. The month-to-month revision is based on final harvest data released by the Kazakhstan State Statistical Agency (SSA) in January. Spring wheat comprises



about 95 percent of Kazakhstan's total wheat output. Severe drought in north-central Kazakhstan, the country's main wheat-production region, had an enormous impact on yield in 2012. The yield, however, was slightly higher than in 2010, which was also marked by

devastating summer drought. The output reported by the SSA for 2012/13 was considerably lower than preliminary harvest-progress data from the Ministry of Agriculture were indicating. In November, Ministry officials pegged wheat production at approximately 11.2 million tons according to yield data reported by regional agricultural authorities, but the final SSA number was about 12 percent lower than the Ministry estimate. *(For more information, contact Mark Lindeman at 202-690-0143.)*



**World Agricultural Production
U.S. Department of Agriculture**

Foreign Agricultural Service / Office of Global Analysis
International Production Assessment Division (IPAD / PECAD)

Ag Box 1051, Room 4630, South Building
Washington, DC 20250-1051

<http://www.pecad.fas.usda.gov/>

Telephone: (202) 720-1157 Fax: (202) 720-1158

This report uses information from the Foreign Agricultural Service’s (FAS) global network of agricultural attachés and counselors, official statistics of foreign governments and other foreign source materials, and the analysis of economic data and satellite imagery. Estimates of foreign area, yield, and production are from the International Production Assessment Branch, FAS, and are reviewed by USDA’s Inter-Agency Commodity Estimates Committee. Estimates of U.S. area, yield, and production are from USDA’s National Agricultural Statistics Service. Numbers within the report may not add to totals because of rounding. This report reflects official USDA estimates released in the World Agricultural Supply and Demand Estimates (WASDE-515), February 8, 2013.

Printed copies are available from the National Technical Information Service. Download an order form at http://www.ntis.gov/products/specialty/usda/fas_a-g.asp, or call NTIS at 1-800-363-2068.

The FAS International Production Assessment Branch prepared this report. The next issue of World Agricultural Production will be released after 12:00 p.m. Eastern Time, March 8, 2013.

Conversion Table

Metric tons to bushels

Wheat, soybeans	=	MT * 36.7437
Corn, sorghum, rye	=	MT * 39.36825
Barley	=	MT * 45.929625
Oats	=	MT * 68.894438

Metric tons to 480-lb bales

Cotton	=	MT * 4.592917
--------	---	---------------

Metric tons to hundredweight

Rice	=	MT * 22.04622
------	---	---------------

Area & weight

1 hectare	=	2.471044 acres
1 kilogram	=	2.204622 pounds



For further information, contact:
U.S. Department of Agriculture
Foreign Agricultural Service
Office of Global Analysis
International Production Assessment Division
Ag Box 1051, Room 4630, South Building
Washington, DC 20250-1051

Telephone: (202) 720-1157

Fax: (202) 720-1158

GENERAL INFORMATION

Director	Derrick Williams III	202-690-0131	derrick.williams@fas.usda.gov
Deputy Director	Paul Provance	202-720-0873	paul.provance@fas.usda.gov
USDA Remote Sensing Advisor	Glenn Bethel	202-720-1280	glenn.bethel@fas.usda.gov
Sr. Analyst/Technical Lead	Curt Reynolds, PhD	202-690-0134	curt.reynoldsc@fas.usda.gov
Sr. Analyst/Satellite Imager y Archives Manager	Dath Mita, PhD	202-720-7339	mita.dath@fas.usda.gov
Crop Analyst/ Global Special Projects Manager/Technical Lead	Jim Crutchfield	202-690-0135	james.crutchfield@fas.usda.gov
Program Analyst	Mary Jackson	202-720-0886	mary.jackson@fas.usda.gov
GIS Analyst/WAP Coordinator	Justin Jenkins	202-720-0419	justin.jenkins@fas.usda.gov
Administrative Assistant	Terri Lagarde	202-720-1157	terri.lagarde@fas.usda.gov

COUNTRY- AND REGION-SPECIFIC INFORMATION

South America	Denise McWilliams, PhD	202-720-0107	denise.mcwilliams@fas.usda.gov
Western and Central Europe, and North Africa	Bryan Purcell	202-690-0138	bryan.purcell@fas.usda.gov
Russia, Kazakhstan, Ukraine, and other FSU-12 countries	Mark Lindeman	202-690-0143	mark.lindeman@fas.usda.gov
Canada, Caribbean, Sri Lanka, and Bangladesh	Arnella Trent	202-720-0881	arnella.trent@fas.usda.gov
East Asia, China, and Japan	Paulette Sandene	202-690-0133	paulette.sandene@fas.usda.gov
India, Pakistan and Nepal	Dath Mita, PhD	202-720-7339	mita.dath@fas.usda.gov
Sub-Saharan Africa, Mexico Nigeria and South Africa	Curt Reynolds, PhD	202-690-0134	curt.reynoldsc@fas.usda.gov
S.E. Asia, Indonesia, Thailand, Malaysia, Cambodia and Vietnam	Michael Shean	202-720-7366	michael.shean@fas.usda.gov
Brazil, Venezuela and Central America	Robert Tetrault	202-720-1071	robert.tetrault@fas.usda.gov
Australia, New Zealand, Papua New Guinea and South Pacific Islands	Jim Crutchfield	202-690-0135	james.crutchfield@fas.usda.gov
Middle East, Afghanistan, Iraq, Iran and Syria	Bill Baker, PhD	202-260-8109	bill.baker@fas.usda.gov
Western United States	Justin Jenkins	202-720-0419	justin.jenkins@fas.usda.gov
Eastern United States	Paul Provance	202-720-0873	paul.provance@fas.usda.gov
Crop Analyst	Vacant		

Table 01 World Crop Production Summary

Million Metric Tons

Commodity	World	Total Foreign	North America			EU-27	Former Soviet		Asia (WAP)					South America		Selected Other			All Others
			United States	Canada	Mexico		Russia	Ukraine	China	India	Indonesia	Pakistan	Thailand	Argentina	Brazil	Australia	South Africa	Turkey	
---Million metric tons---																			
Wheat																			
2010/11	652.0	592.0	60.1	23.3	3.7	136.0	41.5	16.8	115.2	80.8	nr	23.9	nr	17.2	5.9	27.4	1.4	17.0	81.8
2011/12 prel.	696.6	642.2	54.4	25.3	3.6	137.2	56.2	22.3	117.4	86.9	nr	25.0	nr	15.5	5.8	29.9	2.0	18.8	96.2
2012/13 proj.																			
Jan	654.3	592.6	61.8	27.2	3.3	131.7	37.7	15.5	120.6	93.9	nr	23.3	nr	11.0	4.8	22.0	1.8	15.5	84.3
Feb	653.6	591.9	61.8	27.2	3.2	131.7	37.7	15.8	120.6	93.9	nr	23.3	nr	11.0	4.3	22.0	1.9	15.5	83.7
Coarse Grains																			
2010/11	1,099.4	769.1	330.2	22.7	29.2	140.5	16.4	21.4	183.4	43.4	6.8	3.6	4.3	33.3	60.4	11.5	11.3	10.2	170.8
2011/12 prel.	1,153.3	829.6	323.7	22.9	25.8	147.4	33.1	33.3	199.7	42.1	8.9	3.6	4.4	30.1	75.9	12.3	12.9	11.3	166.0
2012/13 proj.																			
Jan	1,121.2	835.2	286.0	24.3	27.8	140.2	28.4	28.6	215.0	37.6	8.9	3.6	4.6	39.2	74.5	11.0	14.0	10.6	167.2
Feb	1,124.2	838.2	286.0	24.3	29.0	140.2	28.4	29.3	215.0	38.2	8.9	3.6	4.6	38.2	76.0	10.8	14.0	10.6	167.2
Rice, Milled																			
2010/11	449.1	441.5	7.6	nr	0.1	2.2	0.7	0.1	137.0	96.0	35.5	5.0	20.3	1.1	9.3	0.5	nr	0.5	133.2
2011/12 prel.	465.0	459.2	5.9	nr	0.1	2.1	0.7	0.1	140.7	104.3	36.5	6.5	20.5	1.0	7.9	0.7	nr	0.5	137.6
2012/13 proj.																			
Jan	465.6	459.2	6.4	nr	0.1	2.0	0.7	0.1	143.0	99.0	36.9	6.8	20.5	1.0	8.2	0.8	nr	0.5	139.6
Feb	465.8	459.5	6.4	nr	0.1	2.0	0.7	0.1	143.0	99.0	36.9	6.8	20.5	1.0	8.2	0.8	nr	0.5	139.8
Total Grains																			
2010/11	2,200.5	1,802.6	397.9	46.0	33.0	278.7	58.6	38.4	435.6	220.2	42.3	32.5	24.5	51.6	75.6	39.4	12.8	27.7	385.8
2011/12 prel.	2,315.0	1,931.0	384.0	48.2	29.5	286.8	90.0	55.7	457.8	233.3	45.4	35.1	24.8	46.6	89.6	42.9	14.9	30.6	399.8
2012/13 proj.																			
Jan	2,241.1	1,887.0	354.1	51.5	31.2	274.0	66.7	44.2	478.6	230.5	45.8	33.7	25.1	51.2	87.5	33.8	15.7	26.6	391.1
Feb	2,243.6	1,889.5	354.1	51.5	32.3	274.0	66.8	45.2	478.6	231.1	45.8	33.7	25.1	50.2	88.5	33.6	15.9	26.6	390.7
Oilseeds																			
2010/11	455.7	355.3	100.4	17.3	0.7	29.1	7.2	11.6	58.1	35.0	9.6	4.8	0.6	54.2	79.0	3.8	1.7	1.9	40.7
2011/12 prel.	441.4	349.0	92.3	18.9	0.9	29.2	12.4	14.2	59.1	35.7	10.2	5.8	0.7	44.7	70.2	5.3	1.3	2.1	38.3
2012/13 proj.																			
Jan	465.8	373.1	92.7	18.3	0.9	27.2	10.3	12.6	56.6	35.4	10.8	5.5	0.7	58.8	85.2	4.2	1.6	2.1	42.8
Feb	466.9	374.2	92.7	18.3	0.8	27.2	10.9	12.6	57.3	35.4	10.8	5.3	0.7	57.8	86.2	4.2	1.6	2.1	42.9
Cotton																			
2010/11	116.3	98.2	18.1	nr	0.7	1.2	nr	nr	30.5	26.4	0.0	8.6	0.0	1.4	9.0	4.2	0.1	2.1	14.0
2011/12 prel.	124.1	108.6	15.6	nr	1.2	1.6	nr	nr	33.1	27.5	0.0	10.6	0.0	1.0	8.7	5.5	0.1	3.4	15.8
2012/13 proj.																			
Jan	118.8	101.8	17.0	nr	0.9	1.4	nr	nr	33.5	25.5	0.0	10.0	0.0	0.8	6.5	4.2	0.0	2.8	16.1
Feb	119.0	101.9	17.0	nr	0.9	1.4	nr	nr	34.0	25.5	0.0	9.6	0.0	0.8	6.5	4.2	0.0	2.6	16.3

1/ Includes wheat, coarse grains, and rice (milled) shown above.

Table 02 Wheat Area, Yield, and Production

Country / Region	Area (Million hectares)				Yield (Metric tons per hectare)				Production (Million metric tons)				Change in Production			
	Prel.		2012/13 Proj.		Prel.		2012/13 Proj.		Prel.		2012/13 Proj.		From last month		From last year	
	2010/11	2011/12	Jan	Feb	2010/11	2011/12	Jan	Feb	2010/11	2011/12	Jan	Feb	MMT	Percent	MMT	Percent
World	217.13	221.76	217.53	215.85	3.00	3.14	3.01	3.03	652.02	696.64	654.31	653.61	-0.70	-0.11	-43.02	-6.18
United States	19.27	18.50	19.83	19.83	3.12	2.94	3.11	3.11	60.06	54.41	61.76	61.76	0.00	0.00	7.34	13.49
Total Foreign	197.86	203.26	197.70	196.02	2.99	3.16	3.00	3.02	591.96	642.22	592.56	591.86	-0.70	-0.12	-50.37	-7.84
China	24.26	24.27	24.14	24.14	4.75	4.84	5.00	5.00	115.18	117.40	120.60	120.60	0.00	0.00	3.20	2.73
South Asia																
India	28.46	29.40	29.69	29.69	2.84	2.95	3.16	3.16	80.80	86.87	93.90	93.90	0.00	0.00	7.03	8.09
Pakistan	9.03	8.90	8.66	8.66	2.65	2.81	2.69	2.69	23.90	25.00	23.30	23.30	0.00	0.00	-1.70	-6.80
Afghanistan	2.30	2.10	2.51	2.51	1.61	1.19	1.65	1.65	3.70	2.50	4.15	4.15	0.00	0.00	1.65	66.00
Former Soviet Union - 12																
Russia	21.75	24.81	21.80	21.30	1.91	2.27	1.73	1.77	41.51	56.24	37.70	37.70	0.00	0.00	-18.54	-32.97
Ukraine	6.28	6.66	5.70	5.63	2.68	3.35	2.72	2.80	16.84	22.32	15.50	15.76	0.26	1.68	-6.56	-29.40
Kazakhstan	13.14	13.69	13.50	12.40	0.73	1.66	0.78	0.79	9.64	22.73	10.50	9.84	-0.66	-6.28	-12.89	-56.71
Uzbekistan	1.40	1.40	1.40	1.40	4.64	4.50	4.79	4.79	6.50	6.30	6.70	6.70	0.00	0.00	0.40	6.35
EU-27	25.88	25.70	25.50	25.50	5.26	5.34	5.17	5.17	136.02	137.23	131.73	131.73	0.00	0.00	-5.50	-4.01
France	5.43	5.41	5.31	5.31	7.05	6.66	7.18	7.18	38.26	35.99	38.15	38.15	0.00	0.00	2.15	5.98
Germany	3.23	3.25	3.06	3.06	7.37	7.01	7.33	7.33	23.78	22.78	22.43	22.43	0.00	0.00	-0.35	-1.55
United Kingdom	1.94	1.97	2.00	2.00	7.67	7.75	6.75	6.75	14.88	15.26	13.50	13.50	0.00	0.00	-1.76	-11.52
Poland	2.14	2.26	2.10	2.10	4.39	4.14	4.05	4.05	9.41	9.34	8.50	8.50	0.00	0.00	-0.84	-8.99
Spain	1.95	1.99	2.17	2.17	3.05	3.46	2.36	2.36	5.94	6.90	5.11	5.11	0.00	0.00	-1.79	-25.91
Italy	1.81	1.65	1.85	1.85	3.59	3.71	3.86	3.86	6.49	6.12	7.15	7.15	0.00	0.00	1.03	16.83
Denmark	0.77	0.74	0.62	0.62	6.61	6.59	7.26	7.26	5.06	4.84	4.50	4.50	0.00	0.00	-0.34	-7.04
Hungary	1.01	0.98	1.08	1.08	3.76	4.18	3.61	3.61	3.80	4.10	3.90	3.90	0.00	0.00	-0.20	-4.88
Romania	2.15	1.95	1.83	1.83	2.69	3.65	2.70	2.70	5.78	7.10	4.95	4.95	0.00	0.00	-2.15	-30.28
Bulgaria	1.13	1.14	1.09	1.09	3.62	3.92	3.91	3.91	4.09	4.46	4.25	4.25	0.00	0.00	-0.21	-4.67
Canada	8.30	8.55	9.50	9.50	2.81	2.96	2.86	2.86	23.30	25.29	27.20	27.20	0.00	0.00	1.91	7.56
Australia	13.50	13.96	13.30	13.30	2.03	2.14	1.65	1.65	27.41	29.92	22.00	22.00	0.00	0.00	-7.92	-26.48
Middle East																
Turkey	8.00	7.70	7.80	7.80	2.13	2.44	1.99	1.99	17.00	18.80	15.50	15.50	0.00	0.00	-3.30	-17.55
Iran	7.04	6.80	7.00	7.00	2.14	1.99	2.00	2.00	15.03	13.50	14.00	14.00	0.00	0.00	0.50	3.70
Syria	1.35	1.60	1.60	1.60	2.67	2.41	2.31	2.31	3.60	3.85	3.70	3.70	0.00	0.00	-0.15	-3.90
North Africa																
Egypt	1.26	1.28	1.35	1.35	5.71	6.56	6.30	6.30	7.20	8.40	8.50	8.50	0.00	0.00	0.10	1.19
Morocco	2.85	3.04	3.14	3.14	1.71	1.91	1.08	1.08	4.89	5.80	3.40	3.40	0.00	0.00	-2.40	-41.38
Argentina	4.85	5.17	3.70	3.70	3.55	3.00	2.97	2.97	17.20	15.50	11.00	11.00	0.00	0.00	-4.50	-29.03
Others	18.23	18.23	17.41	17.39	2.32	2.45	2.48	2.47	42.25	44.57	43.18	42.88	-0.30	-0.69	-1.69	-3.79

World and Selected Countries and Regions

Table 03 Total Coarse Grain Area, Yield, and Production

Country / Region	Area (Million hectares)				Yield (Metric tons per hectare)				Production (Million metric tons)				Change in Production			
	Prel.		2012/13 Proj.		Prel.		2012/13 Proj.		Prel.		2012/13 Proj.		From last month		From last year	
	2010/11	2011/12	Jan	Feb	2010/11	2011/12	Jan	Feb	2010/11	2011/12	Jan	Feb	MMT	Percent	MMT	Percent
World	303.50	311.53	315.54	316.20	3.62	3.70	3.55	3.56	1,099.38	1,153.30	1,121.23	1,124.17	2.94	0.26	-29.13	-2.53
United States	36.52	36.96	39.20	39.20	9.04	8.76	7.30	7.30	330.24	323.73	286.01	286.01	0.00	0.00	-37.72	-11.65
Total Foreign	266.98	274.56	276.33	277.00	2.88	3.02	3.02	3.03	769.14	829.57	835.22	838.16	2.94	0.35	8.59	1.04
China	34.58	35.71	37.17	37.17	5.30	5.59	5.79	5.79	183.40	199.66	215.01	215.01	0.00	0.00	15.35	7.69
South America																
Brazil	14.86	16.23	16.76	16.76	4.06	4.68	4.45	4.54	60.38	75.88	74.49	75.99	1.50	2.01	0.11	0.14
Argentina	5.81	6.02	6.38	6.38	5.72	5.00	6.13	5.98	33.26	30.11	39.15	38.15	-1.00	-2.55	8.05	26.73
EU-27	29.77	29.91	30.58	30.58	4.72	4.93	4.59	4.59	140.50	147.44	140.22	140.22	0.00	0.00	-7.22	-4.90
France	3.77	3.77	4.01	4.01	7.23	7.35	7.43	7.43	27.24	27.69	29.80	29.80	0.00	0.00	2.12	7.65
Germany	3.29	3.24	3.45	3.45	6.16	5.90	6.61	6.61	20.26	19.14	22.83	22.83	0.00	0.00	3.70	19.31
Poland	5.49	5.46	5.54	5.54	3.21	3.17	3.44	3.44	17.63	17.29	19.05	19.05	0.00	0.00	1.76	10.16
Spain	3.92	3.80	3.77	3.77	3.30	3.73	2.80	2.80	12.94	14.17	10.56	10.56	0.00	0.00	-3.61	-25.49
Italy	1.38	1.39	1.45	1.45	7.31	7.73	6.40	6.40	10.09	10.77	9.26	9.26	0.00	0.00	-1.52	-14.07
Hungary	1.56	1.65	1.52	1.52	5.46	5.85	3.78	3.78	8.54	9.64	5.76	5.76	0.00	0.00	-3.88	-40.22
United Kingdom	1.07	1.11	1.16	1.16	5.65	5.65	5.47	5.47	6.07	6.25	6.32	6.32	0.00	0.00	0.07	1.09
Romania	3.03	3.22	3.15	3.15	3.46	3.84	2.38	2.38	10.46	12.38	7.49	7.49	0.00	0.00	-4.89	-39.53
Former Soviet Union - 12																
Russia	9.78	14.38	14.05	14.17	1.68	2.30	2.02	2.01	16.42	33.08	28.35	28.44	0.09	0.32	-4.64	-14.02
Ukraine	7.64	7.94	8.45	8.42	2.81	4.19	3.38	3.48	21.44	33.30	28.56	29.32	0.76	2.66	-3.98	-11.95
Kazakhstan	1.66	1.82	1.95	1.95	1.18	1.87	1.17	1.17	1.97	3.40	2.28	2.28	0.00	0.00	-1.12	-33.02
Africa	79.63	80.19	79.93	79.93	1.38	1.32	1.38	1.38	110.27	105.88	110.49	110.49	0.00	0.00	4.61	4.35
Nigeria	16.25	16.50	16.60	16.60	1.43	1.44	1.45	1.45	23.25	23.80	24.01	24.01	0.00	0.00	0.21	0.88
South Africa	3.73	4.00	4.16	4.16	3.03	3.23	3.36	3.36	11.32	12.91	13.97	13.97	0.00	0.00	1.06	8.20
Ethiopia	5.19	5.47	5.34	5.34	2.02	2.09	2.12	2.12	10.47	11.44	11.33	11.33	0.00	0.00	-0.11	-0.92
Egypt	1.06	0.91	0.96	0.96	7.13	7.21	7.15	7.15	7.56	6.56	6.86	6.86	0.00	0.00	0.30	4.57
India	27.43	26.58	24.07	24.32	1.58	1.58	1.56	1.57	43.37	42.06	37.61	38.21	0.60	1.60	-3.85	-9.15
Southeast Asia																
Indonesia	2.85	3.12	3.15	3.15	2.39	2.84	2.83	2.83	6.80	8.85	8.90	8.90	0.00	0.00	0.05	0.56
Philippines	2.63	2.56	2.59	2.59	2.76	2.79	2.79	2.79	7.27	7.13	7.22	7.22	0.00	0.00	0.09	1.19
Thailand	1.03	1.04	1.08	1.08	4.14	4.18	4.21	4.21	4.25	4.35	4.55	4.55	0.00	0.00	0.20	4.60
Mexico	9.28	8.04	8.38	8.78	3.15	3.20	3.31	3.30	29.23	25.75	27.78	28.98	1.20	4.32	3.23	12.52
Canada	4.72	4.95	5.31	5.33	4.80	4.63	4.57	4.56	22.67	22.92	24.26	24.30	0.04	0.15	1.38	6.00
Australia	5.27	5.31	5.49	5.43	2.18	2.32	2.00	1.98	11.47	12.33	10.95	10.75	-0.20	-1.83	-1.57	-12.76
Turkey	4.17	3.99	4.16	4.16	2.44	2.83	2.54	2.54	10.19	11.28	10.58	10.58	0.00	0.00	-0.70	-6.21
Others	25.86	26.79	26.86	26.84	2.56	2.47	2.41	2.41	66.27	66.15	64.83	64.79	-0.04	-0.07	-1.37	-2.07

World and Selected Countries and Regions

Table 04 Corn Area, Yield, and Production

Country / Region	Area (Million hectares)				Yield (Metric tons per hectare)				Production (Million metric tons)				Change in Production			
	Prel.		2012/13 Proj.		Prel.		2012/13 Proj.		Prel.		2012/13 Proj.		From last month		From last year	
	2010/11	2011/12	Jan	Feb	2010/11	2011/12	Jan	Feb	2010/11	2011/12	Jan	Feb	MMT	Percent	MMT	Percent
World	163.90	169.68	174.22	174.81	5.08	5.20	4.89	4.89	832.33	882.47	852.30	854.38	2.07	0.24	-28.10	-3.18
United States	32.96	33.99	35.36	35.36	9.59	9.24	7.74	7.74	316.17	313.95	273.83	273.83	0.00	0.00	-40.12	-12.78
Total Foreign	130.94	135.69	138.86	139.45	3.94	4.19	4.17	4.16	516.16	568.52	578.47	580.54	2.07	0.36	12.02	2.11
China	32.50	33.54	34.95	34.95	5.45	5.75	5.95	5.95	177.25	192.78	208.00	208.00	0.00	0.00	15.22	7.90
South America																
Brazil	13.80	15.20	15.50	15.50	4.16	4.80	4.58	4.68	57.40	73.00	71.00	72.50	1.50	2.11	-0.50	-0.68
Argentina	3.75	3.60	3.50	3.50	6.72	5.83	8.00	7.71	25.20	21.00	28.00	27.00	-1.00	-3.57	6.00	28.57
Mexico	7.02	6.07	6.50	6.83	3.00	3.09	3.18	3.15	21.06	18.73	20.70	21.50	0.80	3.86	2.77	14.81
EU-27	8.02	8.81	8.96	8.96	7.00	7.51	6.10	6.10	56.17	66.17	54.67	54.67	0.00	0.00	-11.50	-17.38
France	1.53	1.60	1.69	1.69	9.00	9.97	9.10	9.10	13.79	15.91	15.35	15.35	0.00	0.00	-0.56	-3.54
Italy	0.92	0.97	0.97	0.97	9.29	9.51	7.84	7.84	8.50	9.22	7.60	7.60	0.00	0.00	-1.62	-17.57
Hungary	1.07	1.20	1.05	1.05	6.55	6.75	4.05	4.05	7.00	8.10	4.25	4.25	0.00	0.00	-3.85	-47.53
Romania	2.25	2.55	2.50	2.50	3.87	4.12	2.40	2.40	8.70	10.50	6.00	6.00	0.00	0.00	-4.50	-42.86
Poland	0.33	0.33	0.54	0.54	5.97	7.18	6.67	6.67	1.99	2.39	3.60	3.60	0.00	0.00	1.21	50.50
India	8.60	8.67	8.50	8.75	2.53	2.49	2.35	2.35	21.73	21.57	20.00	20.60	0.60	3.00	-0.97	-4.50
Canada	1.24	1.27	1.42	1.42	9.75	8.93	9.20	9.20	12.04	11.36	13.06	13.06	0.00	0.00	1.70	14.97
Indonesia	2.85	3.12	3.15	3.15	2.39	2.84	2.83	2.83	6.80	8.85	8.90	8.90	0.00	0.00	0.05	0.56
Ukraine	2.65	3.54	4.40	4.37	4.50	6.44	4.66	4.79	11.92	22.84	20.50	20.92	0.42	2.06	-1.92	-8.39
Serbia	1.23	1.26	1.30	1.30	5.53	5.00	2.92	2.92	6.80	6.30	3.80	3.80	0.00	0.00	-2.50	-39.68
Egypt	0.85	0.70	0.75	0.75	7.65	7.86	7.73	7.73	6.50	5.50	5.80	5.80	0.00	0.00	0.30	5.45
Philippines	2.63	2.56	2.59	2.59	2.76	2.79	2.79	2.79	7.27	7.13	7.22	7.22	0.00	0.00	0.09	1.19
Vietnam	1.08	1.10	1.15	1.15	4.30	4.50	4.61	4.61	4.65	4.95	5.30	5.30	0.00	0.00	0.35	7.07
Thailand	1.00	1.01	1.05	1.05	4.20	4.26	4.29	4.29	4.20	4.30	4.50	4.50	0.00	0.00	0.20	4.65
Russia	1.02	1.60	1.80	1.90	3.01	4.34	4.44	4.21	3.08	6.96	8.00	7.99	-0.01	-0.08	1.03	14.82
Sub-Saharan Africa																
South Africa	2.86	3.15	3.30	3.30	3.82	3.95	4.09	4.09	10.92	12.42	13.50	13.50	0.00	0.00	1.08	8.72
Nigeria	5.00	5.15	5.20	5.20	1.76	1.80	1.81	1.81	8.80	9.25	9.41	9.41	0.00	0.00	0.16	1.73
Ethiopia	1.96	2.15	2.10	2.10	2.49	2.51	2.57	2.57	4.90	5.40	5.40	5.40	0.00	0.00	0.00	0.00
Zimbabwe	1.35	1.60	0.96	0.96	0.74	0.91	1.01	1.01	1.00	1.45	0.97	0.97	0.00	0.00	-0.49	-33.45
Turkey	0.49	0.45	0.53	0.53	7.35	8.00	8.38	8.38	3.60	3.60	4.40	4.40	0.00	0.00	0.80	22.22
Others	31.04	31.13	31.25	31.19	2.09	2.09	2.09	2.09	64.89	64.97	65.35	65.11	-0.24	-0.37	0.14	0.21

World and Selected Countries and Regions

Table 05 Barley Area, Yield, and Production

Country / Region	Area (Million hectares)				Yield (Metric tons per hectare)				Production (Million metric tons)				Change in Production			
	Prel.		2012/13 Proj.		Prel.		2012/13 Proj.		Prel.		2012/13 Proj.		From last month		From last year	
	2010/11	2011/12	Jan	Feb	2010/11	2011/12	Jan	Feb	2010/11	2011/12	Jan	Feb	MMT	Percent	MMT	Percent
World	47.26	49.77	51.05	51.05	2.60	2.70	2.54	2.55	122.69	134.23	129.81	130.20	0.39	0.30	-4.03	-3.00
United States	1.00	0.91	1.31	1.31	3.93	3.74	3.65	3.65	3.93	3.39	4.80	4.80	0.00	0.00	1.40	41.39
Total Foreign	46.26	48.87	49.74	49.74	2.57	2.68	2.51	2.52	118.77	130.84	125.02	125.40	0.39	0.31	-5.44	-4.16
Russia	4.97	7.70	7.70	7.66	1.68	2.20	1.81	1.82	8.35	16.94	13.90	13.95	0.05	0.36	-2.99	-17.64
EU-27	12.48	11.94	12.60	12.60	4.29	4.31	4.32	4.32	53.51	51.45	54.41	54.41	0.00	0.00	2.96	5.75
Germany	1.64	1.60	1.68	1.68	6.29	5.47	6.19	6.19	10.33	8.73	10.42	10.42	0.00	0.00	1.69	19.33
France	1.59	1.55	1.68	1.68	6.42	5.68	6.71	6.71	10.18	8.78	11.30	11.30	0.00	0.00	2.52	28.74
Spain	2.89	2.70	2.69	2.69	2.83	3.09	2.16	2.16	8.15	8.33	5.80	5.80	0.00	0.00	-2.53	-30.36
United Kingdom	0.92	0.97	1.01	1.01	5.70	5.68	5.47	5.47	5.25	5.49	5.50	5.50	0.00	0.00	0.01	0.11
Denmark	0.59	0.60	0.71	0.71	5.04	5.43	5.63	5.63	2.99	3.26	4.00	4.00	0.00	0.00	0.74	22.55
Poland	1.12	1.02	1.15	1.15	3.16	3.27	3.48	3.48	3.53	3.34	4.00	4.00	0.00	0.00	0.66	19.90
Czech Republic	0.39	0.37	0.38	0.38	4.08	4.88	4.34	4.34	1.58	1.81	1.66	1.66	0.00	0.00	-0.16	-8.60
Finland	0.41	0.41	0.47	0.47	3.28	3.71	3.51	3.51	1.34	1.52	1.66	1.66	0.00	0.00	0.13	8.81
Sweden	0.32	0.32	0.38	0.38	3.86	4.29	4.63	4.63	1.23	1.39	1.74	1.74	0.00	0.00	0.35	25.18
Italy	0.27	0.25	0.30	0.30	3.47	3.64	3.56	3.56	0.94	0.90	1.05	1.05	0.00	0.00	0.15	16.67
Hungary	0.29	0.26	0.27	0.27	3.37	3.79	3.52	3.52	0.97	0.99	0.95	0.95	0.00	0.00	-0.04	-3.94
Austria	0.17	0.15	0.15	0.15	4.60	5.61	5.50	5.50	0.78	0.86	0.83	0.83	0.00	0.00	-0.03	-3.96
Ukraine	4.32	3.68	3.30	3.29	1.97	2.47	2.03	2.11	8.48	9.10	6.70	6.94	0.24	3.51	-2.16	-23.77
Canada	2.39	2.40	2.75	2.75	3.19	3.29	2.91	2.91	7.63	7.89	8.01	8.01	0.00	0.00	0.12	1.50
Australia	3.68	3.77	3.88	3.88	2.17	2.21	1.81	1.81	8.00	8.35	7.00	7.00	0.00	0.00	-1.35	-16.16
Turkey	3.35	3.20	3.30	3.30	1.76	2.19	1.67	1.67	5.90	7.00	5.50	5.50	0.00	0.00	-1.50	-21.43
China	0.58	0.65	0.68	0.68	3.40	3.85	3.82	3.82	1.97	2.50	2.60	2.60	0.00	0.00	0.10	4.00
Iran	1.58	1.60	1.68	1.68	2.03	1.81	2.03	2.03	3.21	2.90	3.40	3.40	0.00	0.00	0.50	17.24
Morocco	1.92	2.03	1.85	1.89	1.34	1.16	0.59	0.58	2.57	2.34	1.10	1.10	0.00	0.00	-1.24	-52.99
Kazakhstan	1.33	1.52	1.60	1.60	0.98	1.71	0.94	0.94	1.31	2.59	1.50	1.50	0.00	0.00	-1.09	-42.15
Ethiopia	1.05	1.01	1.02	1.02	1.46	1.57	1.55	1.55	1.53	1.59	1.58	1.58	0.00	0.00	-0.01	-0.75
Belarus	0.69	0.70	0.65	0.65	2.85	2.87	3.08	3.23	1.97	2.01	2.00	2.10	0.10	5.00	0.09	4.32
India	0.62	0.78	0.77	0.77	2.18	2.13	2.09	2.09	1.35	1.66	1.61	1.61	0.00	0.00	-0.05	-3.01
Argentina	0.75	1.16	1.50	1.50	3.93	3.88	3.67	3.67	2.95	4.50	5.50	5.50	0.00	0.00	1.00	22.22
Mexico	0.27	0.22	0.21	0.21	2.51	2.23	2.67	2.67	0.67	0.49	0.56	0.56	0.00	0.00	0.08	15.61
Iraq	1.25	1.13	0.60	0.60	0.92	0.88	0.83	0.83	1.15	1.00	0.50	0.50	0.00	0.00	-0.50	-50.00
Algeria	1.00	1.00	1.00	1.00	1.50	1.35	1.70	1.70	1.50	1.35	1.70	1.70	0.00	0.00	0.35	25.93
Others	4.03	4.38	4.65	4.65	1.67	1.64	1.60	1.60	6.72	7.18	7.45	7.45	0.00	0.00	0.27	3.75

World and Selected Countries and Regions

Table 06 Oats Area, Yield, and Production

Country / Region	Area (Million hectares)				Yield (Metric tons per hectare)				Production (Million metric tons)				Change in Production			
	Prel.		2012/13 Proj.		Prel.		2012/13 Proj.		Prel.		2012/13 Proj.		From last month		From last year	
	2010/11	2011/12	Jan	Feb	2010/11	2011/12	Jan	Feb	2010/11	2011/12	Jan	Feb	MMT	Percent	MMT	Percent
World	9.85	10.34	10.11	10.16	2.01	2.18	2.04	2.04	19.82	22.60	20.63	20.73	0.11	0.52	-1.86	-8.25
United States	0.51	0.38	0.42	0.42	2.31	2.05	2.20	2.20	1.18	0.78	0.93	0.93	0.00	0.00	0.15	19.26
Total Foreign	9.34	9.96	9.69	9.74	2.00	2.19	2.03	2.03	18.64	21.82	19.70	19.80	0.11	0.54	-2.01	-9.23
Russia	2.24	2.93	2.80	2.85	1.44	1.82	1.43	1.41	3.22	5.33	4.00	4.03	0.03	0.68	-1.31	-24.47
Canada	0.89	1.08	0.96	0.96	2.75	2.91	2.79	2.79	2.45	3.16	2.68	2.68	0.00	0.00	-0.48	-15.14
EU-27	2.71	2.68	2.66	2.66	2.75	2.93	2.85	2.85	7.45	7.86	7.58	7.58	0.00	0.00	-0.28	-3.55
Poland	0.54	0.55	0.55	0.55	2.47	2.46	2.40	2.40	1.34	1.35	1.32	1.32	0.00	0.00	-0.03	-2.44
Finland	0.28	0.32	0.32	0.32	2.91	3.42	3.44	3.44	0.81	1.10	1.10	1.10	0.00	0.00	0.00	-0.18
Spain	0.51	0.49	0.45	0.45	2.00	2.20	1.48	1.48	1.02	1.08	0.66	0.66	0.00	0.00	-0.42	-38.68
Germany	0.14	0.14	0.15	0.15	4.24	4.38	5.21	5.21	0.60	0.63	0.76	0.76	0.00	0.00	0.13	21.21
Sweden	0.17	0.18	0.18	0.18	3.37	3.84	3.89	3.89	0.56	0.70	0.70	0.70	0.00	0.00	0.00	0.29
United Kingdom	0.12	0.11	0.12	0.12	5.52	5.62	5.63	5.63	0.69	0.61	0.68	0.68	0.00	0.00	0.06	10.11
France	0.10	0.08	0.08	0.08	4.57	4.09	4.75	4.75	0.45	0.32	0.38	0.38	0.00	0.00	0.06	19.12
Italy	0.13	0.11	0.12	0.12	2.22	2.43	2.38	2.38	0.29	0.27	0.30	0.30	0.00	0.00	0.03	10.49
Denmark	0.05	0.05	0.05	0.05	5.83	4.80	4.80	4.80	0.27	0.24	0.24	0.24	0.00	0.00	0.00	0.00
Romania	0.19	0.18	0.18	0.18	1.71	1.94	1.81	1.81	0.33	0.35	0.33	0.33	0.00	0.00	-0.03	-7.14
Czech Republic	0.05	0.05	0.05	0.05	2.65	3.73	3.33	3.33	0.14	0.17	0.15	0.15	0.00	0.00	-0.02	-10.71
Hungary	0.05	0.05	0.06	0.06	2.41	2.45	2.36	2.36	0.12	0.13	0.13	0.13	0.00	0.00	0.00	0.00
Austria	0.03	0.03	0.03	0.03	3.63	4.40	4.40	4.40	0.10	0.11	0.11	0.11	0.00	0.00	0.00	0.00
Ireland	0.02	0.02	0.02	0.02	7.63	8.00	7.20	7.20	0.15	0.17	0.14	0.14	0.00	0.00	-0.02	-14.29
Lithuania	0.07	0.07	0.07	0.07	1.34	2.00	2.00	2.00	0.09	0.13	0.13	0.13	0.00	0.00	0.00	0.00
Australia	0.83	0.73	0.70	0.70	1.37	1.75	1.50	1.50	1.13	1.27	1.05	1.05	0.00	0.00	-0.22	-17.58
Ukraine	0.31	0.28	0.30	0.30	1.47	1.81	1.83	2.09	0.46	0.51	0.55	0.63	0.08	14.55	0.12	24.51
China	0.20	0.20	0.20	0.20	2.69	3.00	2.90	2.90	0.53	0.60	0.58	0.58	0.00	0.00	-0.02	-3.33
Belarus	0.18	0.17	0.20	0.20	2.40	2.70	3.00	3.00	0.44	0.45	0.60	0.60	0.00	0.00	0.15	33.93
Brazil	0.15	0.15	0.15	0.15	2.46	2.40	2.40	2.40	0.38	0.37	0.37	0.37	0.00	0.00	0.00	0.00
Argentina	0.29	0.22	0.20	0.20	2.32	1.57	2.00	2.00	0.66	0.35	0.40	0.40	0.00	0.00	0.06	15.94
Chile	0.11	0.10	0.11	0.11	5.32	5.00	5.33	5.33	0.56	0.51	0.56	0.56	0.00	0.00	0.06	10.89
Norway	0.08	0.07	0.07	0.07	3.93	3.10	3.10	3.10	0.30	0.22	0.22	0.22	0.00	0.00	0.00	0.00
Turkey	0.09	0.10	0.10	0.10	2.34	2.21	2.21	2.21	0.20	0.21	0.21	0.21	0.00	0.00	0.00	0.00
Kazakhstan	0.16	0.14	0.15	0.15	0.82	1.80	1.33	1.33	0.13	0.26	0.20	0.20	0.00	0.00	-0.06	-22.48
Serbia	0.07	0.07	0.05	0.05	1.85	1.85	1.70	1.70	0.12	0.12	0.09	0.09	0.00	0.00	-0.04	-29.17
Others	1.04	1.04	1.04	1.04	0.58	0.58	0.59	0.59	0.61	0.61	0.61	0.61	0.00	0.00	0.00	0.00

World and Selected Countries and Regions

Table 07 Rye Area, Yield, and Production

Country / Region	Area (Million hectares)				Yield (Metric tons per hectare)				Production (Million metric tons)				Change in Production			
	Prel.		2012/13 Proj.		Prel.		2012/13 Proj.		Prel.		2012/13 Proj.		From last month		From last year	
	2010/11	2011/12	Jan	Feb	2010/11	2011/12	Jan	Feb	2010/11	2011/12	Jan	Feb	MMT	Percent	MMT	Percent
World	4.85	4.91	5.17	5.14	2.36	2.49	2.66	2.70	11.42	12.21	13.76	13.87	0.11	0.79	1.66	13.62
United States	0.11	0.10	0.10	0.10	1.77	1.64	1.76	1.76	0.19	0.16	0.18	0.18	0.00	0.00	0.02	9.32
Total Foreign	4.74	4.81	5.07	5.04	2.37	2.50	2.68	2.72	11.23	12.05	13.59	13.70	0.11	0.80	1.65	13.68
EU-27	2.32	2.28	2.28	2.28	3.26	3.03	3.68	3.68	7.57	6.92	8.39	8.39	0.00	0.00	1.47	21.29
Poland	1.06	1.09	1.00	1.00	2.68	2.40	2.87	2.87	2.85	2.60	2.87	2.87	0.00	0.00	0.27	10.23
Germany	0.63	0.61	0.71	0.71	4.63	4.11	5.48	5.48	2.90	2.52	3.89	3.89	0.00	0.00	1.37	54.42
Spain	0.14	0.15	0.16	0.16	1.90	2.46	1.57	1.57	0.26	0.37	0.25	0.25	0.00	0.00	-0.11	-31.06
Lithuania	0.08	0.05	0.05	0.05	2.54	1.67	2.50	2.50	0.21	0.09	0.13	0.13	0.00	0.00	0.04	49.43
Latvia	0.06	0.04	0.04	0.04	2.75	2.50	2.76	2.76	0.16	0.10	0.11	0.11	0.00	0.00	0.01	10.53
France	0.03	0.03	0.03	0.03	5.21	4.43	4.97	4.97	0.15	0.12	0.16	0.16	0.00	0.00	0.04	28.23
Denmark	0.05	0.06	0.03	0.03	4.90	5.07	4.84	4.84	0.26	0.29	0.15	0.15	0.00	0.00	-0.14	-48.98
Czech Republic	0.03	0.03	0.03	0.03	3.93	4.68	4.17	4.17	0.12	0.12	0.13	0.13	0.00	0.00	0.01	6.84
Austria	0.05	0.05	0.05	0.05	3.50	4.39	4.35	4.35	0.16	0.20	0.20	0.20	0.00	0.00	0.00	-0.99
Sweden	0.03	0.03	0.03	0.03	4.72	5.08	5.20	5.20	0.12	0.13	0.13	0.13	0.00	0.00	0.00	-1.52
Hungary	0.04	0.03	0.04	0.04	2.08	2.30	2.20	2.20	0.08	0.08	0.08	0.08	0.00	0.00	0.00	1.32
Slovakia	0.02	0.01	0.02	0.02	2.12	3.31	2.71	2.71	0.04	0.04	0.05	0.05	0.00	0.00	0.00	6.98
Finland	0.03	0.03	0.02	0.02	2.72	2.80	3.00	3.00	0.07	0.07	0.06	0.06	0.00	0.00	-0.01	-14.29
United Kingdom	0.01	0.01	0.01	0.01	6.20	7.00	7.00	7.00	0.03	0.04	0.04	0.04	0.00	0.00	0.00	0.00
Romania	0.02	0.01	0.01	0.01	2.27	2.55	2.27	2.27	0.03	0.03	0.03	0.03	0.00	0.00	0.00	-10.71
Greece	0.02	0.02	0.02	0.02	1.83	1.83	1.83	1.83	0.03	0.03	0.03	0.03	0.00	0.00	0.00	0.00
Portugal	0.02	0.02	0.02	0.02	0.90	0.86	0.79	0.79	0.02	0.02	0.02	0.02	0.00	0.00	0.00	-16.67
Russia	1.38	1.52	1.45	1.42	1.19	1.95	1.48	1.50	1.64	2.97	2.15	2.13	-0.02	-0.79	-0.83	-28.11
Belarus	0.35	0.34	0.60	0.60	2.09	2.39	2.50	2.67	0.74	0.80	1.50	1.60	0.10	6.67	0.80	99.00
Ukraine	0.28	0.28	0.30	0.30	1.66	2.08	2.17	2.27	0.46	0.58	0.65	0.68	0.03	4.00	0.10	16.75
Canada	0.10	0.10	0.13	0.13	2.44	2.51	2.72	2.72	0.24	0.24	0.34	0.34	0.00	0.00	0.10	41.08
Turkey	0.14	0.14	0.14	0.14	2.60	2.50	2.50	2.50	0.37	0.35	0.35	0.35	0.00	0.00	0.00	0.00
Argentina	0.02	0.03	0.03	0.03	1.67	1.41	1.60	1.60	0.04	0.05	0.04	0.04	0.00	0.00	-0.01	-11.11
Kazakhstan	0.04	0.03	0.05	0.05	0.95	1.12	1.00	1.00	0.04	0.03	0.05	0.05	0.00	0.00	0.02	78.57
Australia	0.04	0.04	0.04	0.04	0.57	0.57	0.57	0.57	0.02	0.02	0.02	0.02	0.00	0.00	0.00	0.00
Switzerland	0.00	0.00	0.00	0.00	6.67	6.67	6.67	6.67	0.02	0.02	0.02	0.02	0.00	0.00	0.00	0.00
Others	0.06	0.06	0.06	0.06	1.50	1.21	1.21	1.21	0.09	0.08	0.08	0.08	0.00	0.00	0.00	0.00

World and Selected Countries and Regions

Table 08 Sorghum Area, Yield, and Production

Country / Region	Area (Million hectares)				Yield (Metric tons per hectare)				Production (Million metric tons)				Change in Production			
	Prel.		2012/13 Proj.		Prel.		2012/13 Proj.		Prel.		2012/13 Proj.		From last month		From last year	
	2010/11	2011/12	Jan	Feb	2010/11	2011/12	Jan	Feb	2010/11	2011/12	Jan	Feb	MMT	Percent	MMT	Percent
World	38.83	37.86	38.81	38.82	1.61	1.43	1.52	1.53	62.48	54.03	59.06	59.26	0.20	0.34	5.23	9.67
United States	1.95	1.59	2.01	2.01	4.51	3.43	3.13	3.13	8.78	5.45	6.27	6.27	0.00	0.00	0.83	15.15
Total Foreign	36.88	36.27	36.81	36.82	1.46	1.34	1.43	1.44	53.70	48.59	52.79	52.99	0.20	0.38	4.40	9.06
Sub-Saharan Africa																
Nigeria	5.40	5.50	5.55	5.55	1.25	1.25	1.24	1.24	6.75	6.85	6.90	6.90	0.00	0.00	0.05	0.73
Sudan	6.20	5.60	5.60	5.60	0.74	0.37	0.68	0.68	4.61	2.09	3.80	3.80	0.00	0.00	1.71	81.91
Ethiopia	1.78	1.87	1.80	1.80	1.95	2.02	2.06	2.06	3.47	3.78	3.70	3.70	0.00	0.00	-0.08	-2.14
Burkina	1.62	1.62	1.62	1.62	1.20	0.99	1.11	1.11	1.95	1.60	1.80	1.80	0.00	0.00	0.20	12.50
Tanzania	0.62	0.88	0.90	0.90	1.29	0.90	0.84	0.84	0.80	0.79	0.76	0.76	0.00	0.00	-0.03	-3.55
Niger	1.50	1.50	1.50	1.50	0.87	0.47	0.67	0.67	1.30	0.70	1.00	1.00	0.00	0.00	0.30	42.86
Uganda	0.31	0.31	0.31	0.31	1.61	1.61	1.61	1.61	0.50	0.50	0.50	0.50	0.00	0.00	0.00	0.00
Mozambique	0.62	0.62	0.62	0.62	0.62	0.66	0.66	0.66	0.38	0.41	0.41	0.41	0.00	0.00	0.00	0.00
Ghana	0.34	0.34	0.34	0.34	1.06	0.96	1.03	1.03	0.36	0.33	0.35	0.35	0.00	0.00	0.03	7.69
South Africa	0.07	0.05	0.05	0.05	2.25	2.80	2.50	2.50	0.16	0.14	0.13	0.13	0.00	0.00	-0.01	-8.76
South Asia																
India	7.06	6.33	6.30	6.30	0.99	0.95	0.95	0.95	7.00	6.03	6.00	6.00	0.00	0.00	-0.03	-0.50
Pakistan	0.24	0.24	0.24	0.24	0.60	0.60	0.60	0.60	0.15	0.15	0.15	0.15	0.00	0.00	0.00	0.00
South America																
Argentina	1.00	1.00	1.15	1.15	4.40	4.20	4.52	4.52	4.40	4.20	5.20	5.20	0.00	0.00	1.00	23.81
Brazil	0.82	0.79	1.00	1.00	2.83	2.81	2.80	2.80	2.31	2.21	2.80	2.80	0.00	0.00	0.60	26.98
Mexico	1.92	1.68	1.60	1.67	3.84	3.82	4.00	4.07	7.39	6.43	6.40	6.80	0.40	6.25	0.38	5.84
China	0.55	0.58	0.60	0.60	4.48	4.48	4.42	4.42	2.46	2.60	2.65	2.65	0.00	0.00	0.05	1.92
Australia	0.63	0.66	0.76	0.70	3.06	3.38	3.16	3.14	1.94	2.22	2.40	2.20	-0.20	-8.33	-0.02	-1.03
Egypt	0.16	0.16	0.16	0.16	5.63	5.63	5.63	5.63	0.90	0.90	0.90	0.90	0.00	0.00	0.00	0.00
EU-27	0.11	0.11	0.10	0.10	5.57	6.06	5.49	5.49	0.63	0.67	0.56	0.56	0.00	0.00	-0.11	-16.79
France	0.05	0.04	0.04	0.04	5.50	6.41	5.80	5.80	0.29	0.28	0.24	0.24	0.00	0.00	-0.04	-15.60
Italy	0.04	0.04	0.03	0.03	6.88	7.12	6.62	6.62	0.28	0.30	0.23	0.23	0.00	0.00	-0.07	-24.75
Others	5.93	6.44	6.61	6.61	1.06	0.93	0.97	0.97	6.26	6.01	6.39	6.39	0.00	0.00	0.38	6.38

World and Selected Countries and Regions

Table 09 Rice Area, Yield, and Production

World and Selected Countries and Regions

Country / Region	Area (Million hectares)				Yield (Metric tons per hectare)				Production (Million metric tons)				Change in Production			
	Prel.		2012/13 Proj.		Prel.		2012/13 Proj.		Prel.		2012/13 Proj.		From last month		From last year	
	2010/11	2011/12	Jan	Feb	2010/11	2011/12	Jan	Feb	2010/11	2011/12	Jan	Feb	MMT	Percent	MMT	Percent
World	157.51	158.93	158.43	158.44	4.25	4.36	4.38	4.38	449.09	465.03	465.55	465.81	0.26	0.05	0.78	0.17
United States	1.46	1.06	1.08	1.08	7.54	7.92	8.35	8.35	7.59	5.87	6.36	6.36	0.00	0.00	0.49	8.35
Total Foreign	156.04	157.87	157.35	157.35	4.22	4.34	4.35	4.36	441.50	459.16	459.20	459.45	0.26	0.06	0.29	0.06
East Asia																
China	29.87	30.06	30.30	30.30	6.55	6.69	6.74	6.74	137.00	140.70	143.00	143.00	0.00	0.00	2.30	1.63
Japan	1.63	1.58	1.58	1.58	6.51	6.66	6.74	6.74	7.72	7.65	7.76	7.76	0.00	0.01	0.11	1.44
Korea, South	0.89	0.85	0.85	0.85	6.51	6.58	6.37	6.37	4.30	4.22	4.01	4.01	0.00	0.00	-0.22	-5.16
Korea, North	0.58	0.57	0.57	0.57	4.24	4.32	4.74	4.74	1.60	1.60	1.74	1.74	0.00	0.00	0.14	8.75
South Asia																
India	42.86	44.10	43.00	43.00	3.36	3.55	3.45	3.45	95.98	104.32	99.00	99.00	0.00	0.00	-5.32	-5.10
Bangladesh	11.70	11.72	11.65	11.65	4.06	4.31	4.35	4.38	31.70	33.70	33.80	34.00	0.20	0.59	0.30	0.89
Pakistan	2.10	2.75	2.70	2.70	3.57	3.55	3.78	3.78	5.00	6.50	6.80	6.80	0.00	0.00	0.30	4.62
Southeast Asia																
Indonesia	12.08	12.16	12.15	12.15	4.67	4.73	4.78	4.78	35.50	36.50	36.90	36.90	0.00	0.00	0.40	1.10
Vietnam	7.61	7.74	7.84	7.84	5.55	5.60	5.66	5.66	26.37	27.08	27.71	27.71	0.00	0.00	0.64	2.35
Thailand	10.67	11.00	10.94	10.94	2.88	2.82	2.84	2.84	20.26	20.46	20.50	20.50	0.00	0.00	0.04	0.20
Burma	7.00	6.50	6.35	6.35	2.35	2.60	2.65	2.65	10.53	10.82	10.75	10.75	0.00	0.00	-0.07	-0.61
Philippines	4.53	4.58	4.63	4.63	3.69	3.71	3.77	3.77	10.54	10.70	10.99	10.99	0.00	0.00	0.29	2.71
Cambodia	2.78	2.77	2.80	2.80	2.38	2.41	2.36	2.36	4.23	4.27	4.23	4.23	0.00	0.00	-0.04	-1.01
Laos	0.86	0.82	0.88	0.86	2.60	2.71	2.78	2.72	1.40	1.40	1.53	1.48	-0.06	-3.59	0.08	5.73
Malaysia	0.67	0.68	0.68	0.68	3.76	3.85	3.86	3.86	1.64	1.69	1.70	1.70	0.00	0.00	0.01	0.59
South America																
Brazil	2.83	2.43	2.42	2.42	4.83	4.78	4.96	4.96	9.30	7.89	8.16	8.16	0.00	0.00	0.27	3.45
Peru	0.39	0.34	0.40	0.40	7.28	7.10	7.25	7.25	1.94	1.67	2.00	2.00	0.00	0.00	0.34	20.11
Sub-Saharan Africa																
Nigeria	2.15	2.17	2.25	2.25	1.93	1.98	2.01	2.01	2.62	2.71	2.85	2.85	0.00	0.00	0.14	5.20
Madagascar	1.34	1.34	1.34	1.34	3.57	3.21	2.99	2.99	3.06	2.75	2.56	2.56	0.00	0.00	-0.19	-6.98
EU-27	0.48	0.48	0.47	0.47	6.49	6.23	6.32	6.32	2.17	2.09	2.04	2.04	0.00	0.00	-0.05	-2.30
Italy	0.25	0.25	0.24	0.24	6.40	5.82	6.06	6.06	1.11	1.01	1.01	1.01	0.00	0.00	0.00	0.40
Spain	0.12	0.12	0.11	0.11	7.53	7.54	7.42	7.42	0.65	0.64	0.59	0.59	0.00	0.00	-0.05	-8.07
Egypt	0.45	0.70	0.74	0.74	9.98	8.80	9.21	9.21	3.10	4.25	4.70	4.70	0.00	0.00	0.45	10.59
Iran	0.56	0.56	0.56	0.56	4.06	4.19	4.19	4.19	1.51	1.55	1.55	1.55	0.00	0.00	0.00	0.00
Others	12.03	11.98	12.26	12.28	3.02	3.11	3.07	3.08	24.03	24.66	24.93	25.04	0.11	0.44	0.38	1.52

Yield is on a rough basis, before the milling process
 Production is on a milled basis, after the milling process

Table 10 Total Oilseed Area, Yield, and Production

World and Selected Countries and Regions

Country / Region	Area (Million hectares)				Yield (Metric tons per hectare)				Production (Million metric tons)				Change in Production			
	Prel.		2012/13 Proj.		Prel.		2012/13 Proj.		Prel.		2012/13 Proj.		From last month		From last year	
	2010/11	2011/12	Jan	Feb	2010/11	2011/12	Jan	Feb	2010/11	2011/12	Jan	Feb	MMT	Percent	MMT	Percent
World Total	--	--	--	--	--	--	--	--	455.72	441.39	465.81	466.87	1.06	0.23	25.48	5.77
Total Foreign	--	--	--	--	--	--	--	--	355.34	349.04	373.09	374.16	1.06	0.29	25.11	7.19
Oilseed, Copra	--	--	--	--	--	--	--	--	6.02	5.54	5.66	5.66	0.00	0.00	0.12	2.15
Oilseed, Palm Kernel	--	--	--	--	--	--	--	--	12.55	13.31	14.15	14.15	0.00	0.00	0.84	6.32
Major Oilseeds	214.19	218.00	222.19	222.28	2.04	1.94	2.01	2.01	437.15	422.55	446.00	447.06	1.06	0.24	24.52	5.80
United States	37.18	35.14	36.71	36.71	2.70	2.63	2.53	2.53	100.38	92.35	92.71	92.71	0.00	0.00	0.37	0.40
Foreign Oilseeds	177.01	182.87	185.48	185.57	1.90	1.81	1.90	1.91	336.78	330.20	353.29	354.35	1.06	0.30	24.15	7.31
South America	51.87	52.31	56.25	56.25	2.79	2.37	2.79	2.79	144.83	123.97	156.91	156.91	0.00	0.00	32.94	26.57
Brazil	25.75	26.58	28.68	28.68	3.07	2.64	2.97	3.00	78.96	70.13	85.15	86.15	1.00	1.17	16.02	22.84
Argentina	20.91	20.23	21.89	21.89	2.59	2.21	2.69	2.64	54.22	44.75	58.82	57.82	-1.00	-1.70	13.08	29.22
Paraguay	3.03	3.19	3.28	3.28	2.43	1.45	2.42	2.42	7.36	4.62	7.95	7.95	0.00	0.00	3.33	72.07
Bolivia	1.17	1.25	1.26	1.26	2.10	2.03	2.10	2.10	2.45	2.54	2.65	2.65	0.00	0.00	0.11	4.33
China	26.65	26.17	25.08	25.16	2.18	2.26	2.26	2.28	58.10	59.07	56.58	57.28	0.70	1.23	-1.80	-3.05
South Asia	38.40	39.52	39.55	39.55	1.02	1.04	1.02	1.02	39.24	40.98	40.43	40.23	-0.20	-0.49	-0.75	-1.82
India	34.45	35.21	35.26	35.26	0.99	0.99	0.98	0.98	34.21	34.92	34.63	34.63	0.00	0.00	-0.29	-0.83
Pakistan	3.63	3.98	3.96	3.96	1.32	1.46	1.40	1.35	4.77	5.79	5.54	5.34	-0.20	-3.61	-0.46	-7.87
EU-27	11.38	11.67	11.08	11.08	2.56	2.50	2.45	2.45	29.14	29.21	27.16	27.16	0.00	0.00	-2.04	-7.00
France	2.21	2.34	2.32	2.32	2.98	3.15	3.11	3.11	6.59	7.36	7.23	7.23	0.00	0.00	-0.13	-1.77
Germany	1.51	1.36	1.33	1.33	3.84	2.90	3.67	3.67	5.80	3.93	4.90	4.90	0.00	0.00	0.97	24.54
Poland	0.85	0.83	0.70	0.70	2.62	2.24	2.68	2.68	2.23	1.87	1.89	1.89	0.00	0.00	0.02	1.13
Romania	1.44	1.45	1.28	1.28	1.70	1.85	1.25	1.25	2.45	2.68	1.60	1.60	0.00	0.00	-1.08	-40.30
Hungary	0.80	0.85	0.81	0.81	2.05	2.33	2.00	2.00	1.64	1.97	1.62	1.62	0.00	0.00	-0.36	-18.00
United Kingdom	0.64	0.71	0.76	0.76	3.47	3.91	3.44	3.44	2.23	2.76	2.60	2.60	0.00	0.00	-0.16	-5.73
Former Soviet Union - 12	18.43	20.98	20.29	20.27	1.23	1.46	1.33	1.37	22.65	30.68	27.05	27.72	0.68	2.50	-2.95	-9.63
Russia	7.20	9.22	8.30	8.45	1.01	1.35	1.24	1.29	7.24	12.43	10.30	10.87	0.57	5.57	-1.55	-12.49
Ukraine	7.30	7.74	7.98	7.96	1.58	1.83	1.58	1.58	11.55	14.20	12.60	12.61	0.01	0.07	-1.59	-11.21
Uzbekistan	1.33	1.31	1.29	1.29	1.20	1.26	1.31	1.31	1.60	1.65	1.69	1.69	0.00	0.00	0.04	2.12
Canada	8.41	9.15	10.31	10.31	2.06	2.07	1.78	1.78	17.30	18.93	18.31	18.31	0.00	0.00	-0.61	-3.23
Africa	12.53	12.98	13.31	13.34	0.94	0.86	0.90	0.90	11.73	11.19	11.93	11.96	0.03	0.27	0.77	6.90
Nigeria	2.10	2.01	1.99	1.99	1.05	1.06	1.08	1.08	2.21	2.14	2.14	2.14	0.00	0.00	0.00	0.00
Southeast Asia	4.03	4.05	4.07	4.07	1.27	1.32	1.33	1.33	5.10	5.35	5.40	5.40	0.00	0.00	0.05	0.94
Indonesia	1.23	1.16	1.14	1.14	1.56	1.55	1.56	1.56	1.91	1.80	1.78	1.78	0.00	0.00	-0.02	-1.11
Australia	2.70	3.14	2.76	2.76	1.40	1.67	1.54	1.54	3.78	5.25	4.25	4.25	0.00	0.00	-1.01	-19.14
Others	2.59	2.91	2.78	2.78	1.89	1.92	1.90	1.85	4.91	5.59	5.28	5.14	-0.14	-2.65	-0.45	-8.04

World Total and Total Foreign: (Major Oilseeds plus copra and palm kernel)

Major Oilseeds: (soybeans, sunflowerseeds, peanuts(inshell), cottonseed and rapeseed)

Table 11 Soybean Area, Yield, and Production

Country / Region	Area (Million hectares)				Yield (Metric tons per hectare)				Production (Million metric tons)				Change in Production			
	Prel.		2012/13 Proj.		Prel.		2012/13 Proj.		Prel.		2012/13 Proj.		From last month		From last year	
	2010/11	2011/12	Jan	Feb	2010/11	2011/12	Jan	Feb	2010/11	2011/12	Jan	Feb	MMT	Percent	MMT	Percent
World	103.00	102.90	108.84	108.90	2.56	2.32	2.48	2.47	263.59	238.73	269.41	269.50	0.09	0.03	30.77	12.89
United States	31.00	29.86	30.80	30.80	2.92	2.82	2.66	2.66	90.61	84.19	82.06	82.06	0.00	0.00	-2.14	-2.54
Total Foreign	72.00	73.04	78.04	78.10	2.40	2.12	2.40	2.40	172.98	154.53	187.36	187.44	0.09	0.05	32.91	21.30
South America																
Brazil	24.20	25.00	27.50	27.50	3.11	2.66	3.00	3.04	75.30	66.50	82.50	83.50	1.00	1.21	17.00	25.56
Argentina	18.30	17.58	19.50	19.50	2.68	2.28	2.77	2.72	49.00	40.10	54.00	53.00	-1.00	-1.85	12.90	32.17
Paraguay	2.87	2.96	3.10	3.10	2.48	1.47	2.50	2.50	7.13	4.36	7.75	7.75	0.00	0.00	3.39	77.87
Bolivia	1.03	1.09	1.09	1.09	2.24	2.13	2.20	2.20	2.30	2.32	2.40	2.40	0.00	0.00	0.08	3.45
Uruguay	0.87	0.90	0.95	0.95	1.79	1.78	2.00	2.00	1.55	1.60	1.90	1.90	0.00	0.00	0.30	18.75
East Asia																
China	8.52	7.89	7.20	7.20	1.77	1.84	1.75	1.75	15.10	14.48	12.60	12.60	0.00	0.00	-1.88	-12.98
Korea, South	0.07	0.08	0.08	0.08	1.48	1.65	1.68	1.68	0.11	0.13	0.13	0.13	0.00	0.00	0.00	0.00
Korea, North	0.13	0.13	0.12	0.12	1.24	1.35	1.25	1.25	0.16	0.18	0.15	0.15	0.00	0.00	-0.03	-14.29
Japan	0.14	0.14	0.14	0.14	1.62	1.63	1.63	1.63	0.22	0.22	0.22	0.22	0.00	0.00	0.00	0.00
India	9.30	10.27	10.80	10.80	1.05	1.07	1.06	1.06	9.80	11.00	11.50	11.50	0.00	0.00	0.50	4.55
Canada	1.51	1.55	1.68	1.68	2.95	2.77	2.93	2.93	4.45	4.30	4.93	4.93	0.00	0.00	0.63	14.70
Former Soviet Union - 12																
Ukraine	1.04	1.11	1.40	1.41	1.62	2.04	1.71	1.70	1.68	2.26	2.40	2.41	0.01	0.21	0.14	6.23
Russia	1.04	1.18	1.30	1.35	1.18	1.48	1.38	1.39	1.22	1.75	1.80	1.88	0.08	4.44	0.13	7.49
Southeast Asia																
Indonesia	0.47	0.45	0.45	0.45	1.38	1.38	1.38	1.38	0.65	0.62	0.62	0.62	0.00	0.00	0.00	0.00
Vietnam	0.17	0.20	0.23	0.23	1.46	1.50	1.52	1.52	0.25	0.30	0.35	0.35	0.00	0.00	0.05	16.67
Thailand	0.12	0.12	0.12	0.12	1.50	1.50	1.50	1.50	0.18	0.18	0.18	0.18	0.00	0.00	0.00	0.00
Burma	0.17	0.17	0.17	0.17	1.21	1.21	1.21	1.21	0.20	0.20	0.20	0.20	0.00	0.00	0.00	0.00
EU-27	0.38	0.45	0.40	0.40	2.87	2.86	2.38	2.38	1.09	1.29	0.95	0.95	0.00	0.00	-0.34	-26.24
Italy	0.17	0.24	0.19	0.19	3.53	3.33	2.66	2.66	0.60	0.80	0.50	0.50	0.00	0.00	-0.30	-37.88
France	0.05	0.04	0.04	0.04	2.71	2.95	2.95	2.95	0.14	0.12	0.11	0.11	0.00	0.00	-0.02	-12.10
Sub-Saharan Africa																
South Africa	0.42	0.47	0.50	0.50	1.70	1.50	1.70	1.70	0.71	0.71	0.85	0.85	0.00	0.00	0.14	19.72
Nigeria	0.44	0.44	0.44	0.44	1.02	1.02	1.02	1.02	0.45	0.45	0.45	0.45	0.00	0.00	0.00	0.00
Uganda	0.15	0.15	0.15	0.15	1.10	1.10	1.10	1.10	0.17	0.17	0.17	0.17	0.00	0.00	0.00	0.00
Serbia	0.15	0.17	0.17	0.17	2.41	2.52	1.70	1.70	0.35	0.42	0.28	0.28	0.00	0.00	-0.14	-32.53
Mexico	0.15	0.16	0.16	0.16	1.09	1.31	1.25	1.25	0.17	0.21	0.20	0.20	0.00	0.00	-0.01	-2.44
Iran	0.08	0.08	0.08	0.08	2.14	2.44	2.44	2.44	0.16	0.20	0.20	0.20	0.00	0.00	0.00	0.00
Others	0.31	0.32	0.33	0.33	1.94	1.91	1.95	1.95	0.60	0.61	0.64	0.64	0.00	0.00	0.03	4.41

World and Selected Countries and Regions

Table 12 Cottonseed Area, Yield, and Production

Country / Region	Area (Million hectares)				Yield (Metric tons per hectare)				Production (Million metric tons)				Change in Production			
	Prel.		2012/13 Proj.		Prel.		2012/13 Proj.		Prel.		2012/13 Proj.		From last month		From last year	
	2010/11	2011/12	Jan	Feb	2010/11	2011/12	Jan	Feb	2010/11	2011/12	Jan	Feb	MMT	Percent	MMT	Percent
World	32.63	34.48	33.07	33.18	1.34	1.35	1.35	1.35	43.56	46.62	44.77	44.70	-0.07	-0.17	-1.93	-4.13
United States	4.33	3.83	3.82	3.82	1.28	1.27	1.37	1.37	5.53	4.87	5.22	5.22	0.00	0.00	0.35	7.22
Total Foreign	28.30	30.65	29.26	29.36	1.34	1.36	1.35	1.34	38.03	41.75	39.55	39.48	-0.07	-0.19	-2.28	-5.45
China	5.25	5.40	5.20	5.28	2.28	2.40	2.53	2.53	11.95	12.97	13.13	13.33	0.20	1.49	0.35	2.72
South Asia																
India	11.14	12.20	11.70	11.70	0.97	0.93	0.92	0.92	10.80	11.30	10.80	10.80	0.00	0.00	-0.50	-4.42
Pakistan	2.80	3.00	3.00	3.00	1.34	1.54	1.47	1.40	3.76	4.62	4.40	4.20	-0.20	-4.55	-0.42	-9.01
Former Soviet Union - 12																
Uzbekistan	1.33	1.31	1.29	1.29	1.20	1.26	1.31	1.31	1.60	1.65	1.69	1.69	0.00	0.00	0.04	2.12
Turkmenistan	0.64	0.58	0.60	0.60	1.07	0.96	0.92	0.92	0.69	0.55	0.55	0.55	0.00	0.00	0.00	0.00
Tajikistan	0.16	0.20	0.20	0.20	0.99	1.08	1.08	1.08	0.16	0.22	0.22	0.22	0.00	0.00	-0.01	-2.26
Kazakhstan	0.14	0.16	0.15	0.15	1.20	1.06	1.05	1.32	0.16	0.17	0.16	0.20	0.04	24.84	0.03	14.62
South America																
Brazil	1.40	1.40	1.00	1.00	2.39	2.31	2.27	2.27	3.35	3.24	2.27	2.27	0.00	0.00	-0.97	-29.89
Argentina	0.61	0.53	0.36	0.36	0.83	0.67	0.72	0.72	0.50	0.36	0.26	0.26	0.00	0.00	-0.10	-26.76
Middle East																
Turkey	0.32	0.49	0.40	0.40	2.16	2.14	2.25	2.12	0.69	1.05	0.90	0.85	-0.05	-6.00	-0.20	-19.43
Syria	0.13	0.15	0.13	0.13	2.75	2.73	2.72	2.72	0.34	0.41	0.34	0.34	0.00	0.00	-0.07	-17.07
Iran	0.12	0.12	0.11	0.11	1.00	1.17	1.14	1.14	0.12	0.14	0.12	0.12	0.00	0.00	-0.02	-11.11
Australia	0.54	0.58	0.45	0.45	2.39	2.93	2.92	2.92	1.30	1.70	1.30	1.30	0.00	0.00	-0.40	-23.53
EU-27	0.30	0.35	0.33	0.33	1.34	1.56	1.41	1.41	0.40	0.55	0.46	0.46	0.00	0.00	-0.09	-15.79
Greece	0.23	0.29	0.26	0.26	1.39	1.58	1.43	1.43	0.32	0.45	0.37	0.37	0.00	0.00	-0.08	-17.33
Spain	0.06	0.07	0.07	0.07	1.19	1.49	1.34	1.34	0.08	0.10	0.09	0.09	0.00	0.00	-0.01	-9.00
Sub-Saharan Africa																
Burkina	0.40	0.40	0.53	0.53	0.45	0.48	0.55	0.55	0.18	0.19	0.29	0.29	0.00	0.00	0.10	50.26
Mali	0.26	0.48	0.50	0.50	0.52	0.50	0.57	0.57	0.13	0.24	0.28	0.28	0.00	0.00	0.04	17.43
Cameroon	0.14	0.18	0.21	0.23	0.98	0.93	1.01	1.02	0.14	0.16	0.21	0.23	0.02	8.49	0.07	41.98
Sudan	0.04	0.10	0.06	0.06	1.21	1.03	1.07	1.07	0.05	0.10	0.06	0.06	0.00	0.00	-0.04	-37.86
Zimbabwe	0.40	0.47	0.43	0.43	0.48	0.49	0.42	0.42	0.19	0.23	0.18	0.18	0.00	0.00	-0.05	-21.05
Nigeria	0.41	0.33	0.30	0.30	0.50	0.43	0.47	0.47	0.21	0.14	0.14	0.14	0.00	0.00	0.00	0.00
Benin	0.18	0.20	0.25	0.25	0.55	0.58	0.73	0.73	0.10	0.12	0.18	0.18	0.00	0.00	0.07	56.90
Uganda	0.10	0.10	0.13	0.13	1.09	1.49	1.05	1.05	0.11	0.15	0.13	0.13	0.00	0.00	-0.02	-12.08
Egypt	0.16	0.22	0.15	0.15	1.13	1.09	1.08	1.08	0.18	0.24	0.16	0.16	0.00	0.00	-0.08	-34.58
Mexico	0.11	0.19	0.15	0.15	2.24	2.09	2.66	2.10	0.25	0.40	0.41	0.32	-0.09	-21.13	-0.08	-19.95
Burma	0.30	0.30	0.30	0.30	0.63	0.63	0.63	0.63	0.19	0.19	0.19	0.19	0.00	0.00	0.00	0.00
Others	0.93	1.22	1.37	1.38	0.52	0.55	0.53	0.53	0.48	0.67	0.72	0.73	0.01	1.94	0.07	9.72

World and Selected Countries and Regions

Table 13 Peanut Area, Yield, and Production

Country / Region	Area (Million hectares)				Yield (Metric tons per hectare)				Production (Million metric tons)				Change in Production			
	Prel.		2012/13 Proj.		Prel.		2012/13 Proj.		Prel.		2012/13 Proj.		From last month		From last year	
	2010/11	2011/12	Jan	Feb	2010/11	2011/12	Jan	Feb	2010/11	2011/12	Jan	Feb	MMT	Percent	MMT	Percent
World	21.45	20.78	20.84	20.84	1.68	1.70	1.76	1.79	36.00	35.34	36.70	37.20	0.50	1.36	1.86	5.26
United States	0.51	0.44	0.65	0.65	3.71	3.80	4.70	4.70	1.89	1.66	3.06	3.06	0.00	0.00	1.40	84.22
Total Foreign	20.94	20.34	20.19	20.19	1.63	1.66	1.67	1.69	34.11	33.68	33.64	34.14	0.50	1.49	0.46	1.37
China	4.53	4.58	4.70	4.70	3.46	3.50	3.40	3.51	15.64	16.05	16.00	16.50	0.50	3.13	0.45	2.83
South Asia																
India	6.00	5.30	5.00	5.00	0.98	1.04	1.00	1.00	5.85	5.50	5.00	5.00	0.00	0.00	-0.50	-9.09
Pakistan	0.11	0.11	0.11	0.11	0.90	0.90	0.90	0.90	0.10	0.10	0.10	0.10	0.00	0.00	0.00	0.00
Sub-Saharan Africa	7.80	7.79	7.80	7.80	0.97	0.89	0.93	0.93	7.57	6.96	7.29	7.29	0.00	0.00	0.33	4.78
Nigeria	1.25	1.25	1.25	1.25	1.24	1.24	1.24	1.24	1.55	1.55	1.55	1.55	0.00	0.00	0.00	0.00
Senegal	1.00	1.00	1.00	1.00	1.29	0.70	1.00	1.00	1.29	0.70	1.00	1.00	0.00	0.00	0.30	42.86
Chad	0.35	0.35	0.35	0.35	1.32	1.32	1.32	1.32	0.47	0.47	0.47	0.47	0.00	0.00	0.00	0.00
Ghana	0.47	0.47	0.47	0.47	0.94	0.94	0.94	0.94	0.44	0.44	0.44	0.44	0.00	0.00	0.00	0.00
Sudan	1.00	1.00	1.00	1.00	0.85	0.85	0.85	0.85	0.85	0.85	0.85	0.85	0.00	0.00	0.00	0.00
Congo (Kinshasa)	0.48	0.48	0.48	0.48	0.78	0.78	0.78	0.78	0.37	0.37	0.37	0.37	0.00	0.00	0.00	0.00
Burkina	0.35	0.35	0.35	0.35	1.01	1.01	1.01	1.01	0.35	0.35	0.35	0.35	0.00	0.00	0.00	0.00
Guinea	0.21	0.21	0.21	0.21	1.24	1.24	1.24	1.24	0.26	0.26	0.26	0.26	0.00	0.00	0.00	0.00
Cameroon	0.31	0.31	0.31	0.31	0.77	0.77	0.77	0.77	0.24	0.24	0.24	0.24	0.00	0.00	0.00	0.00
Mali	0.25	0.25	0.25	0.25	1.10	1.10	1.10	1.10	0.28	0.28	0.28	0.28	0.00	0.00	0.00	0.00
Malawi	0.22	0.22	0.22	0.22	1.20	1.20	1.20	1.20	0.27	0.27	0.27	0.27	0.00	0.00	0.00	0.00
Cote d'Ivoire	0.15	0.15	0.15	0.15	1.00	1.00	1.00	1.00	0.15	0.15	0.15	0.15	0.00	0.00	0.00	0.00
Uganda	0.21	0.21	0.21	0.21	0.70	0.70	0.70	0.70	0.15	0.15	0.15	0.15	0.00	0.00	0.00	0.00
Central African Republic	0.13	0.13	0.13	0.13	1.12	1.12	1.12	1.12	0.14	0.14	0.14	0.14	0.00	0.00	0.00	0.00
Benin	0.16	0.16	0.16	0.16	0.81	0.81	0.81	0.81	0.13	0.13	0.13	0.13	0.00	0.00	0.00	0.00
Mozambique	0.29	0.29	0.29	0.29	0.38	0.38	0.38	0.38	0.11	0.11	0.11	0.11	0.00	0.00	0.00	0.00
Niger	0.26	0.26	0.26	0.26	0.42	0.42	0.42	0.42	0.11	0.11	0.11	0.11	0.00	0.00	0.00	0.00
South Africa	0.06	0.05	0.06	0.06	2.09	1.93	2.18	2.18	0.12	0.09	0.12	0.12	0.00	0.00	0.03	37.93
Southeast Asia																
Indonesia	0.75	0.70	0.68	0.68	1.67	1.66	1.68	1.68	1.25	1.17	1.15	1.15	0.00	0.00	-0.02	-1.72
Burma	0.83	0.85	0.85	0.85	1.38	1.53	1.53	1.53	1.14	1.30	1.30	1.30	0.00	0.00	0.00	0.00
Vietnam	0.21	0.24	0.25	0.25	2.10	2.21	2.20	2.20	0.44	0.53	0.55	0.55	0.00	0.00	0.02	3.77
Thailand	0.07	0.07	0.07	0.07	1.77	1.77	1.77	1.77	0.12	0.12	0.12	0.12	0.00	0.00	0.00	0.00
South America																
Argentina	0.27	0.30	0.33	0.33	3.97	3.17	3.57	3.57	1.05	0.95	1.16	1.16	0.00	0.00	0.21	22.11
Brazil	0.09	0.10	0.10	0.10	2.67	2.95	2.60	2.60	0.23	0.30	0.26	0.26	0.00	0.00	-0.04	-11.86
Egypt	0.06	0.06	0.06	0.06	3.17	3.17	3.17	3.17	0.19	0.19	0.19	0.19	0.00	0.00	0.00	0.00
Mexico	0.05	0.06	0.06	0.06	1.53	1.31	1.42	1.42	0.08	0.08	0.09	0.09	0.00	0.00	0.01	6.25
Others	0.19	0.19	0.19	0.19	2.39	2.39	2.37	2.37	0.46	0.45	0.45	0.45	0.00	0.00	-0.01	-1.33

World and Selected Countries and Regions

Table 14 Sunflowerseed Area, Yield, and Production

Country / Region	Area (Million hectares)				Yield (Metric tons per hectare)				Production (Million metric tons)				Change in Production			
	Prel.		2012/13 Proj.		Prel.		2012/13 Proj.		Prel.		2012/13 Proj.		From last month		From last year	
	2010/11	2011/12	Jan	Feb	2010/11	2011/12	Jan	Feb	2010/11	2011/12	Jan	Feb	MMT	Percent	MMT	Percent
World	23.20	25.74	24.76	24.74	1.44	1.57	1.45	1.47	33.46	40.30	35.86	36.37	0.51	1.42	-3.93	-9.75
United States	0.76	0.59	0.75	0.75	1.64	1.57	1.70	1.70	1.24	0.93	1.26	1.26	0.00	0.00	0.34	36.65
Total Foreign	22.44	25.15	24.01	24.00	1.44	1.57	1.44	1.46	32.22	39.37	34.59	35.10	0.51	1.47	-4.27	-10.84
Former Soviet Union - 12																
Russia	5.55	7.20	6.00	6.13	0.96	1.34	1.25	1.30	5.35	9.63	7.50	7.96	0.46	6.12	-1.67	-17.33
Ukraine	5.40	5.80	6.00	6.00	1.56	1.81	1.50	1.50	8.40	10.50	9.00	9.00	0.00	0.00	-1.50	-14.29
Moldova	0.25	0.28	0.25	0.25	1.52	1.54	1.20	1.20	0.38	0.43	0.30	0.30	0.00	0.00	-0.13	-29.74
Kazakhstan	0.74	0.95	0.82	0.68	0.44	0.43	0.43	0.59	0.33	0.41	0.35	0.40	0.05	14.29	-0.01	-2.20
South America																
Argentina	1.74	1.82	1.70	1.70	2.11	1.83	2.00	2.00	3.67	3.34	3.40	3.40	0.00	0.00	0.06	1.80
Uruguay	0.00	0.01	0.03	0.03	1.33	1.50	1.60	1.60	0.00	0.02	0.04	0.04	0.00	0.00	0.03	166.67
Bolivia	0.14	0.16	0.17	0.17	1.07	1.38	1.47	1.47	0.15	0.22	0.25	0.25	0.00	0.00	0.03	13.64
China	0.98	0.95	0.98	0.98	2.34	2.26	2.30	2.30	2.30	2.15	2.25	2.25	0.00	0.00	0.10	4.65
EU-27	3.72	4.23	4.25	4.25	1.85	1.96	1.64	1.64	6.90	8.29	6.95	6.95	0.00	0.00	-1.34	-16.18
France	0.70	0.74	0.68	0.68	2.36	2.55	2.48	2.48	1.64	1.89	1.69	1.69	0.00	0.00	-0.19	-10.29
Hungary	0.50	0.57	0.62	0.62	1.98	2.38	2.03	2.03	0.99	1.37	1.25	1.25	0.00	0.00	-0.11	-8.33
Spain	0.70	0.86	0.75	0.75	1.21	1.26	0.86	0.86	0.85	1.08	0.65	0.65	0.00	0.00	-0.43	-40.04
Italy	0.11	0.12	0.12	0.12	2.27	2.32	1.92	1.92	0.25	0.27	0.22	0.22	0.00	0.00	-0.05	-19.34
Slovakia	0.08	0.09	0.09	0.09	1.81	2.26	2.22	2.22	0.15	0.20	0.20	0.20	0.00	0.00	0.00	-1.49
South Asia																
India	0.76	0.74	0.76	0.76	0.86	0.84	0.83	0.83	0.66	0.62	0.63	0.63	0.00	0.00	0.01	1.61
Pakistan	0.45	0.50	0.47	0.47	1.52	1.50	1.49	1.49	0.69	0.75	0.70	0.70	0.00	0.00	-0.05	-6.67
Turkey	0.49	0.49	0.53	0.53	2.06	1.89	2.00	2.00	1.00	0.93	1.05	1.05	0.00	0.00	0.13	13.51
South Africa	0.64	0.45	0.50	0.50	1.34	1.14	1.25	1.25	0.86	0.52	0.63	0.63	0.00	0.00	0.11	21.36
Burma	0.91	0.92	0.92	0.92	0.70	0.76	0.76	0.76	0.64	0.70	0.70	0.70	0.00	0.00	0.00	0.00
Serbia	0.17	0.18	0.18	0.18	2.35	2.37	2.00	2.00	0.40	0.42	0.35	0.35	0.00	0.00	-0.07	-15.66
Canada	0.05	0.01	0.04	0.04	1.33	1.43	1.72	1.72	0.07	0.02	0.07	0.07	0.00	0.00	0.05	270.00
Australia	0.04	0.04	0.05	0.05	1.16	1.18	1.32	1.32	0.04	0.05	0.07	0.07	0.00	0.00	0.02	48.94
Others	0.40	0.42	0.37	0.37	0.96	0.96	0.95	0.95	0.39	0.40	0.36	0.36	0.00	0.00	-0.04	-11.03

World and Selected Countries and Regions

Table 15 Rapeseed Area, Yield, and Production

Country / Region	Area (Million hectares)				Yield (Metric tons per hectare)				Production (Million metric tons)				Change in Production			
	Prel.		2012/13 Proj.		Prel.		2012/13 Proj.		Prel.		2012/13 Proj.		From last month		From last year	
	2010/11	2011/12	Jan	Feb	2010/11	2011/12	Jan	Feb	2010/11	2011/12	Jan	Feb	MMT	Percent	MMT	Percent
World	33.91	34.11	34.69	34.63	1.79	1.80	1.71	1.71	60.55	61.56	59.26	59.30	0.04	0.07	-2.26	-3.67
United States	0.58	0.42	0.70	0.70	1.92	1.65	1.59	1.59	1.11	0.70	1.11	1.11	0.00	0.00	0.41	59.08
Total Foreign	33.33	33.69	33.99	33.93	1.78	1.81	1.71	1.72	59.43	60.87	58.15	58.19	0.04	0.08	-2.67	-4.39
EU-27	6.99	6.63	6.10	6.10	2.97	2.88	3.08	3.08	20.75	19.08	18.80	18.80	0.00	0.00	-0.28	-1.45
Germany	1.49	1.33	1.31	1.31	3.87	2.91	3.70	3.70	5.75	3.87	4.84	4.84	0.00	0.00	0.97	25.12
France	1.47	1.56	1.60	1.60	3.29	3.44	3.39	3.39	4.82	5.35	5.43	5.43	0.00	0.00	0.08	1.48
United Kingdom	0.64	0.71	0.76	0.76	3.47	3.91	3.44	3.44	2.23	2.76	2.60	2.60	0.00	0.00	-0.16	-5.73
Poland	0.85	0.83	0.70	0.70	2.62	2.24	2.69	2.69	2.23	1.86	1.88	1.88	0.00	0.00	0.02	1.13
Czech Republic	0.37	0.37	0.40	0.40	2.82	2.80	2.81	2.81	1.04	1.05	1.13	1.13	0.00	0.00	0.08	7.74
Denmark	0.17	0.15	0.13	0.13	3.46	3.41	3.79	3.79	0.58	0.51	0.48	0.48	0.00	0.00	-0.03	-5.91
Hungary	0.26	0.23	0.15	0.15	2.15	2.26	1.87	1.87	0.56	0.53	0.28	0.28	0.00	0.00	-0.25	-46.87
Romania	0.58	0.38	0.09	0.09	1.81	1.96	1.65	1.65	1.05	0.75	0.14	0.14	0.00	0.00	-0.61	-81.33
Slovakia	0.16	0.15	0.11	0.11	1.96	2.29	2.05	2.05	0.32	0.33	0.22	0.22	0.00	0.00	-0.11	-34.04
Sweden	0.11	0.10	0.11	0.11	2.56	2.50	2.55	2.55	0.28	0.25	0.28	0.28	0.00	0.00	0.03	12.00
Lithuania	0.20	0.20	0.20	0.20	2.10	2.10	2.10	2.10	0.42	0.42	0.42	0.42	0.00	0.00	0.00	0.00
Latvia	0.09	0.09	0.09	0.09	2.31	2.28	2.28	2.28	0.22	0.21	0.21	0.21	0.00	0.00	0.00	0.00
Austria	0.05	0.05	0.06	0.06	3.15	3.38	2.71	2.71	0.17	0.18	0.15	0.15	0.00	0.00	-0.03	-16.76
Finland	0.16	0.09	0.10	0.10	1.29	1.29	1.30	1.30	0.21	0.12	0.13	0.13	0.00	0.00	0.01	11.11
Estonia	0.10	0.09	0.09	0.09	1.34	1.52	1.52	1.52	0.13	0.14	0.14	0.14	0.00	0.00	0.00	0.00
China	7.37	7.35	7.00	7.00	1.78	1.83	1.80	1.80	13.10	13.43	12.60	12.60	0.00	0.00	-0.83	-6.15
South Asia																
India	7.25	6.70	7.00	7.00	0.98	0.97	0.96	0.96	7.10	6.50	6.70	6.70	0.00	0.00	0.20	3.08
Pakistan	0.27	0.37	0.38	0.38	0.85	0.89	0.89	0.89	0.23	0.33	0.34	0.34	0.00	0.00	0.01	3.03
Bangladesh	0.30	0.31	0.31	0.31	0.75	0.74	0.74	0.74	0.23	0.23	0.23	0.23	0.00	0.00	0.00	0.00
Canada	6.86	7.59	8.59	8.59	1.86	1.92	1.55	1.55	12.79	14.61	13.31	13.31	0.00	0.00	-1.30	-8.89
Australia	2.08	2.45	2.21	2.21	1.14	1.38	1.25	1.25	2.36	3.39	2.76	2.76	0.00	0.00	-0.63	-18.46
Former Soviet Union - 12																
Ukraine	0.86	0.83	0.58	0.55	1.70	1.73	2.07	2.20	1.47	1.44	1.20	1.20	0.00	0.33	-0.23	-16.21
Russia	0.61	0.84	1.00	0.97	1.09	1.25	1.00	1.07	0.67	1.05	1.00	1.04	0.04	3.50	-0.02	-1.43
Belarus	0.31	0.30	0.42	0.42	1.22	1.28	1.67	1.67	0.37	0.38	0.70	0.71	0.01	0.71	0.33	86.02
Paraguay	0.06	0.08	0.08	0.08	1.60	1.32	1.45	1.45	0.10	0.10	0.12	0.12	0.00	0.00	0.02	16.00
Others	0.37	0.24	0.33	0.33	0.70	1.44	1.19	1.19	0.26	0.34	0.39	0.39	0.00	0.00	0.05	14.04

World and Selected Countries and Regions

Table 16 Copra, Palm Kernel, and Palm Oil Production

Country / Region	Production (Million metric tons)				Change in Production			
	2010/11	Prel.	2012/13 Proj.		From last month		From last year	
		2011/12	Jan	Feb	MMT	Percent	MMT	Percent
Oilseed, Copra								
Philippines	2.80	2.30	2.30	2.30	0.00	0.00	0.00	0.00
Indonesia	1.46	1.48	1.60	1.60	0.00	0.00	0.12	8.11
India	0.74	0.74	0.74	0.74	0.00	0.00	0.00	0.00
Vietnam	0.24	0.24	0.24	0.24	0.00	0.00	0.00	0.00
Mexico	0.23	0.23	0.23	0.23	0.00	0.00	0.00	0.00
Papua New Guinea	0.13	0.13	0.13	0.13	0.00	0.00	0.00	0.00
Thailand	0.07	0.07	0.07	0.07	0.00	0.00	0.00	0.00
Sri Lanka	0.07	0.07	0.07	0.07	0.00	0.00	0.00	0.00
Mozambique	0.05	0.05	0.05	0.05	0.00	0.00	0.00	0.00
Cote d'Ivoire	0.05	0.05	0.05	0.05	0.00	0.00	0.00	0.00
World	6.02	5.54	5.66	5.66	0.00	0.00	0.12	2.17
Oilseed, Palm Kernel								
Indonesia	6.20	6.90	7.45	7.45	0.00	0.00	0.55	7.97
Malaysia	4.52	4.50	4.75	4.75	0.00	0.00	0.25	5.56
Nigeria	0.67	0.67	0.67	0.67	0.00	0.00	0.00	0.00
Thailand	0.26	0.31	0.34	0.34	0.00	0.00	0.03	9.68
Papua New Guinea	0.14	0.14	0.14	0.14	0.00	0.00	0.00	0.00
Colombia	0.09	0.11	0.12	0.12	0.00	0.00	0.01	9.09
Cote d'Ivoire	0.08	0.08	0.08	0.08	0.00	0.00	0.00	0.00
Brazil	0.07	0.07	0.07	0.07	0.00	0.00	0.00	0.00
Cameroon	0.07	0.07	0.07	0.07	0.00	0.00	0.00	0.00
Ecuador	0.06	0.06	0.06	0.06	0.00	0.00	0.00	0.00
World	12.55	13.31	14.15	14.15	0.00	0.00	0.84	6.31
Oil, Palm								
Indonesia	23.60	25.90	28.00	28.00	0.00	0.00	2.10	8.11
Malaysia	18.21	18.20	18.50	18.50	0.00	0.00	0.30	1.65
Thailand	1.29	1.55	1.70	1.70	0.00	0.00	0.15	9.68
Colombia	0.75	0.92	0.96	0.96	0.00	0.00	0.04	4.35
Nigeria	0.85	0.85	0.85	0.85	0.00	0.00	0.00	0.00
Papua New Guinea	0.50	0.51	0.53	0.53	0.00	0.00	0.02	3.92
Ecuador	0.46	0.50	0.51	0.51	0.00	0.00	0.00	0.00
Cote d'Ivoire	0.30	0.30	0.30	0.30	0.00	0.00	0.00	0.00
Brazil	0.27	0.28	0.28	0.28	0.00	0.00	0.00	0.00
Honduras	0.25	0.25	0.25	0.25	0.00	0.00	0.00	0.00
World	47.92	50.70	53.33	53.33	0.00	0.00	2.63	5.19

World and Selected Countries and Regions

Table 17 Cotton Area, Yield, and Production

Country / Region	Area (Million hectares)				Yield (Kilograms per hectare)				Production (Million 480 lb. bales)				Change in Production			
	Prel.		2012/13 Proj.		Prel.		2012/13 Proj.		Prel.		2012/13 Proj.		From last month		From last year	
	2010/11	2011/12	Jan	Feb	2010/11	2011/12	Jan	Feb	2010/11	2011/12	Jan	Feb	MBales	Percent	MBales	Percent
World	33.45	35.52	34.03	34.13	757	761	760	759	116.33	124.13	118.83	118.95	0.12	0.10	-5.18	-4.18
United States	4.33	3.83	3.82	3.82	910	886	971	971	18.10	15.57	17.01	17.01	0.00	0.00	1.44	9.23
Total Foreign	29.12	31.69	30.21	30.31	734	746	734	732	98.23	108.56	101.82	101.94	0.12	0.12	-6.62	-6.10
China	5.25	5.40	5.20	5.28	1,265	1,335	1,403	1,403	30.50	33.10	33.50	34.00	0.50	1.49	0.90	2.72
South Asia	14.03	15.29	14.80	14.80	546	545	525	519	35.19	38.27	35.68	35.28	-0.40	-1.12	-2.99	-7.80
India	11.14	12.20	11.70	11.70	516	491	475	475	26.40	27.50	25.50	25.50	0.00	0.00	-2.00	-7.27
Pakistan	2.80	3.00	3.00	3.00	672	769	726	697	8.64	10.60	10.00	9.60	-0.40	-4.00	-1.00	-9.43
Former Soviet Union - 12	2.32	2.33	2.29	2.29	639	641	657	667	6.82	6.86	6.93	7.03	0.10	1.44	0.17	2.45
Uzbekistan	1.33	1.31	1.29	1.29	671	698	729	729	4.10	4.20	4.30	4.30	0.00	0.00	0.10	2.38
Turkmenistan	0.64	0.58	0.60	0.60	595	530	544	544	1.75	1.40	1.50	1.50	0.00	0.00	0.10	7.14
Tajikistan	0.16	0.20	0.20	0.20	550	619	599	599	0.41	0.58	0.55	0.55	0.00	0.00	-0.03	-5.17
Kazakhstan	0.14	0.16	0.15	0.15	664	590	581	736	0.42	0.44	0.40	0.50	0.10	25.00	0.06	14.68
Sub-Saharan Africa	3.29	4.02	4.26	4.29	296	313	331	332	4.47	5.77	6.47	6.53	0.07	1.01	0.76	13.23
Burkina	0.40	0.40	0.53	0.53	354	381	435	435	0.65	0.70	1.05	1.05	0.00	0.00	0.35	50.00
Mali	0.26	0.48	0.50	0.50	398	386	435	435	0.48	0.85	1.00	1.00	0.00	0.00	0.15	17.65
Zimbabwe	0.40	0.47	0.43	0.43	272	278	243	243	0.50	0.60	0.48	0.48	0.00	0.00	-0.13	-20.83
Benin	0.18	0.20	0.25	0.25	363	381	479	479	0.30	0.35	0.55	0.55	0.00	0.00	0.20	57.14
Cote d'Ivoire	0.20	0.25	0.33	0.33	370	392	402	402	0.34	0.45	0.60	0.60	0.00	0.00	0.15	33.33
Cameroon	0.14	0.18	0.21	0.23	428	404	441	445	0.28	0.33	0.43	0.46	0.04	8.24	0.14	41.54
Nigeria	0.41	0.33	0.30	0.30	252	218	236	236	0.48	0.33	0.33	0.33	0.00	0.00	0.00	0.00
Sudan	0.04	0.10	0.06	0.06	518	435	454	454	0.10	0.20	0.13	0.13	0.00	0.00	-0.08	-37.50
South America	2.15	2.14	1.55	1.55	1,102	1,051	1,109	1,110	10.89	10.31	7.87	7.88	0.01	0.06	-2.44	-23.61
Brazil	1.40	1.40	1.00	1.00	1,400	1,353	1,415	1,415	9.00	8.70	6.50	6.50	0.00	0.00	-2.20	-25.29
Argentina	0.61	0.53	0.36	0.36	486	411	484	484	1.35	1.00	0.80	0.80	0.00	0.00	-0.20	-20.00
Paraguay	0.03	0.08	0.07	0.07	399	340	358	373	0.06	0.13	0.12	0.12	0.01	4.35	-0.01	-4.00
Middle East	0.61	0.80	0.68	0.68	1,180	1,298	1,250	1,202	3.29	4.79	3.88	3.73	-0.15	-3.86	-1.06	-22.09
Iran	0.12	0.12	0.11	0.11	635	587	591	591	0.35	0.31	0.29	0.29	0.00	0.00	-0.03	-8.06
Syria	0.13	0.15	0.13	0.13	1,280	1,306	1,263	1,263	0.74	0.90	0.73	0.73	0.00	0.00	-0.18	-19.44
Turkey	0.32	0.49	0.40	0.40	1,436	1,529	1,497	1,415	2.11	3.44	2.75	2.60	-0.15	-5.45	-0.84	-24.42
Australia	0.54	0.58	0.45	0.45	1,681	2,065	2,055	2,055	4.20	5.50	4.20	4.20	0.00	0.00	-1.30	-23.64
EU-27	0.30	0.35	0.33	0.33	854	994	930	930	1.16	1.62	1.41	1.41	0.00	0.00	-0.21	-12.75
Greece	0.23	0.29	0.26	0.26	890	1,016	963	963	0.94	1.33	1.15	1.15	0.00	0.00	-0.18	-13.53
Spain	0.06	0.07	0.07	0.07	715	897	800	800	0.21	0.28	0.25	0.25	0.00	0.00	-0.03	-9.42
Egypt	0.16	0.22	0.15	0.15	763	737	773	773	0.55	0.75	0.52	0.52	0.00	0.00	-0.23	-30.87
Mexico	0.11	0.19	0.15	0.15	1,436	1,338	1,343	1,343	0.73	1.18	0.94	0.94	0.00	0.00	-0.24	-20.00
Others	0.37	0.37	0.37	0.37	248	251	250	250	0.42	0.43	0.43	0.43	0.00	0.00	0.00	-0.23

World and Selected Countries and Regions

TABLE 18

The table below presents a record of the differences between the February projection and the final Estimate. Using world wheat production as an example, the "root mean square error" means that chances are 2 out of 3 that the current forecast will not be above or below the final estimate by more than 0.6 percent. Chances are 9 out of 10 (90% confidence level) that the difference will not exceed 1.0 percent. The average difference between the February projection and the final estimate is 2.5 million tons, ranging from 0.0 million to 7.3 million tons. The February projection has been below the estimate 23 times and above 8 times.

RELIABILITY OF PRODUCTION PROJECTIONS 1/

COMMODITY AND REGION	Root mean square error	90 percent confidence interval	Difference between forecast and final estimate					
			Average	Smallest	Largest	Years		
						Below final	Above final	
	Percent		---Million metric tons---					
WHEAT								
World	0.6	1.0	2.5	0.0	7.3	23	8	
U.S.	0.1	0.2	0.0	0.0	0.3	12	8	
Foreign	0.7	1.2	2.5	0.0	7.3	23	8	
COARSE GRAINS 2/								
World	1.2	2.0	8.9	0.0	26.0	25	6	
U.S.	0.2	0.3	0.1	0.0	1.3	13	7	
Foreign	1.7	2.8	8.9	0.3	26.0	23	7	
RICE (Milled)								
World	1.7	2.8	4.4	0.1	14.0	23	8	
U.S.	1.6	2.8	0.1	0.0	0.3	12	5	
Foreign	1.7	2.9	4.3	0.1	14.0	23	8	
SOYBEANS								
World	2.9	4.9	4.0	0.4	15.3	20	11	
U.S.	1.4	2.3	0.6	0.0	2.5	13	12	
Foreign	4.8	8.2	4.0	0.3	14.8	21	10	
COTTON			---Million 480-lb. bales---					
World	2.3	3.9	1.6	0.0	5.4	23	8	
U.S.	0.9	1.5	0.1	0.0	0.3	11	19	
Foreign	2.8	4.7	1.6	0.1	5.7	23	8	
UNITED STATES			-----Million bushels-----					
<i>CORN</i>	0.2	0.3	3	0	41	2	2	
<i>SORGHUM</i>	0.2	0.3	0	0	4	0	2	
<i>BARLEY</i>	0.5	0.9	1	0	11	12	4	
<i>OATS</i>	0.2	0.4	0	0	2	4	3	

1/ Marketing years 1981/82 through 2011/12. Final is defined as the first November estimate following the marketing year for 1981/82 through 2011/12.

2/ Includes corn, sorghum, barley, oats, rye, millet, and mixed grain

February 2013

Office of Global Analysis, FAS, USDA