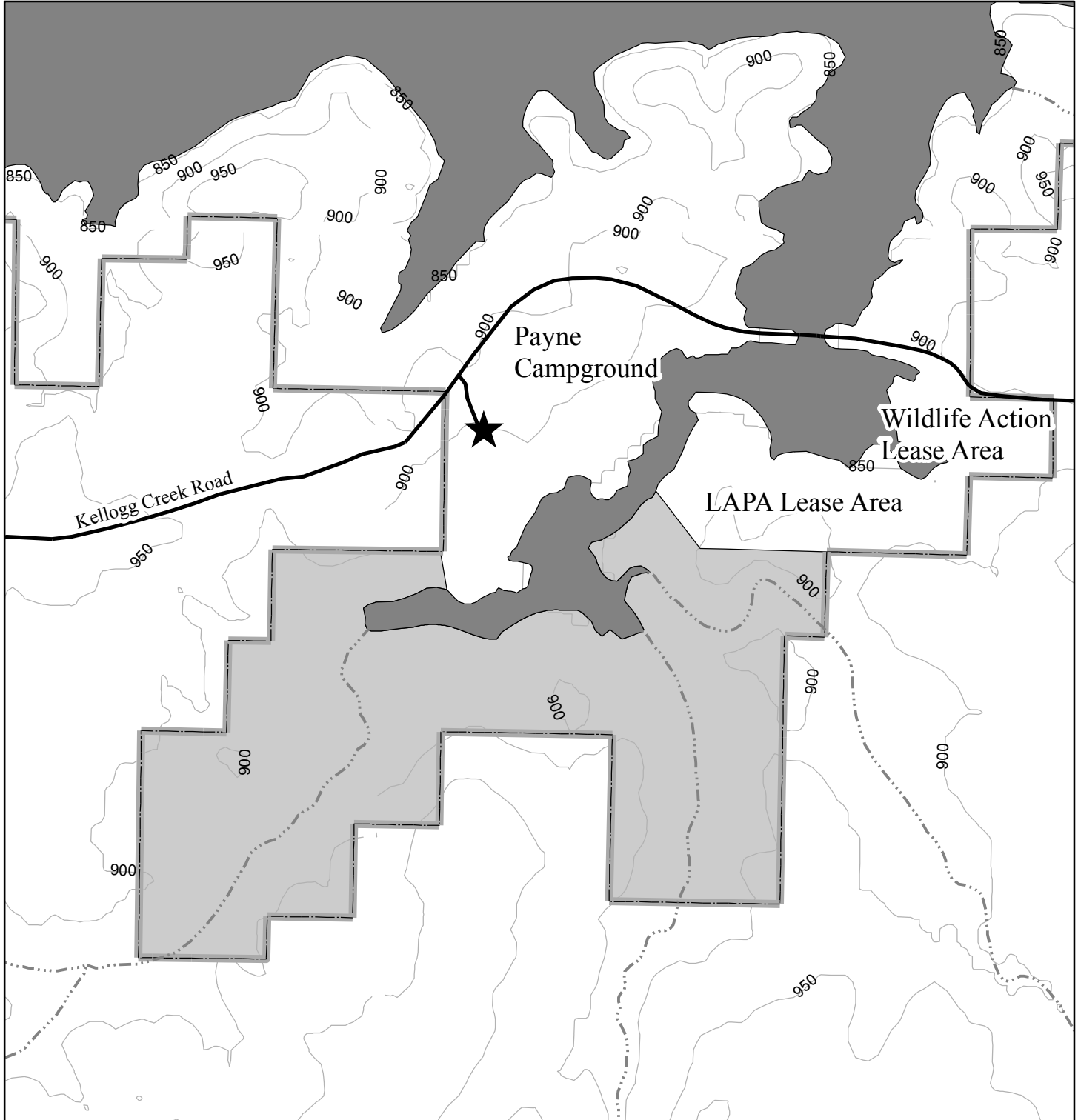


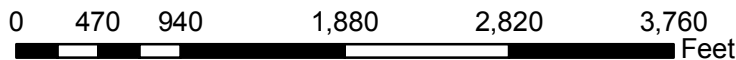
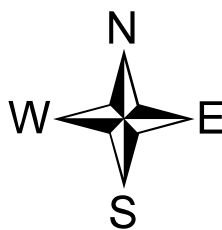
Kellogg Creek - Hunting Area



US Army Corps of Engineers
 Allatoona Operations Project
 Management Office
 678-721-6700



US Army Corps of Engineers
 Mobile District



Legend

- USACE Boundary Line
- Streams
- Major Roads
- 50 Foot Contours
- Allatoona Lake
- Designated Hunting Area
- Access Locations or Parking